

Delinquency Eyed By School Board

The May meeting of the Board of Education Tuesday night saw a lively three-and-a-half hour session covering school-plant improvements, delinquency in the school, the payment of bonds, and the failure to renew the contract of Coach David R. Snow.

A number of citizens attended and helped keep the pot boiling. In fact, the board president, Ellwood Gruwell, was not able to adjourn the meeting until midnight. Even then, some die-hards remained for a time.

Considerable attention was given to the incorrigibles in the school. The Rev. Richard S. Gibson, who substituted in a 7th grade class, reported that five or six students caused so much disturbance it was impossible to teach the remainder.

Suggestions for handling the situation called for getting in touch with the parents of the culprits and expulsion of the offenders. Mrs. James Coady said the so-called incorrigibles hampered education in general.

J. C. Messner, superintendent of Harrington schools, and secretary of the Board of Education, appointed a committee of those present to discuss and determine educational needs of the community. Those nonboard members were as follows: Roland Hitchens, newly elected member of the board, who will take office in July, replacing Gruwell; James Coady, Kenneth Aiken, and James O'Neal, defeated candidates in the recent school-board election; Fred Greenly, the Rev. Richard S. Gibson, and Carlington H. Burgess, Journal editor.

Board members present were Russell Bowdle, Luther Hatfield, and Gruwell.

The Board opened the meeting by agreeing to burn \$60,000 in bonds and coupons for some \$24,000 interest, for 1954, 1955, and 1956. The annual payments are about \$20,000, and the annual interest is approximately \$8,000. The debt comes from the construction of the Elementary Building and the Field House.

Resurfacing Grounds

The Board awarded a contract to Atlantic Concrete & Asphalt Company, Milford, to resurface play areas and parking areas, work to be done in June. The price was \$1674.74, or 68c per square yard. Paul Scotten, Dover, bid \$1594.50 and 90c per square yard, but his bid was rejected when it was found that improper measurements were listed in the bid.

The Board voted to build a temporary tennis court between the Field House and the Elementary School. The court will be on the primary school play area and will be also used for other net games. If the court is used sufficiently, Messner suggested a permanent tennis area be built.

Painting

The Board of Education was told by the secretary it had \$1,200 for painting. It was agreed to paint the Pierre S. DuPont School with school employes and outside painters. It was also agreed that playground equipment at the same school be painted and a new incinerator built.

An enrollment survey, by which the number of teachers are determined, revealed the school will be entitled to two more teachers next fall, making 42 in all. Messner said one teacher would be used in Junior High School and that the seventh grade would have three sections next fall.

Switching to crowding, the superintendent of schools said the school could handle the enrollment next fall but after that it would burst at the seams.

More Snow

The Snow problem has failed to melt. James Coady, in referring to the Board's action in refusing to renew the contract of Coach Snow, resurrected the controversial subject. After ascertaining that the Board of Education spent some \$260,000 annually, he said the Board doesn't get any backing because the public didn't know what it was doing.

He pointed out, that for his school taxes, he wanted a full education for his children. He explained his backing of Snow and added he couldn't find a reason for the failure to renew the contract. He cited reasons provided by law for firing, but (Continued on back page)

Dedicate \$200 Million Electronic Oil Refinery

A \$200,000,000 electronically controlled "oil refinery of the future" was dedicated here today by Tidewater Oil Company in ceremonies attended by more than 1,000 leaders of business, industry, government and the armed forces.

The massive installation is located on an eight-square-mile site on the Delaware River, 15 miles south of Wilmington.

Tidewater president D. T. Staples declared that the plant represents "the first in a new generation of petroleum refineries" designed to manufacture gasolines for the cars of tomorrow and of today.

He disclosed that the refinery's entire gasoline-making capacity can be devoted to producing gasoline rated at 100 octane or higher—enough each day for 41,000,000 miles of motoring. Staples revealed that aviation fuels for America's defense establishment are already being manufactured by the new refinery, in addition to Tidewater's Flying A automotive gasolines, heating oils and other petroleum products.

The ultra-modern industrial complex, which includes six of the world's largest refining plants was officially welcomed to the State of Delaware by Governor J. Caleb Boggs. Hailing the refinery's completion as a milestone in the state's industrial progress, he predicted that it would contribute materially to the economic well-being of the citizens of Delaware.

Tidewater's desire to fulfill the role of a good citizen and neighbor was emphasized by vice-president George F. Getty II, a company director and manager of its eastern division. "We will be partners in progress with all people of Delaware," he said.

Other speakers at the ceremonies included U. S. Senator J. Allen Frear Jr., and Congressman Harry G. Haskell Jr., both of Delaware. George C. Caine, manufacturing department manager, presided at the ceremonies which culminated with the unveiling of a bronze plaque to commemorate the formal commissioning of the refinery.

Later, guests toured the entire refinery by bus. They visited the Delaware River marine terminal built to accommodate the new supertankers in the company's fleet, the refinery's 11 major processing plants and the control rooms from which they are operated. In the letter, they inspected the extensive array of automatic and electronic devices used to insure the purity and quality of the refinery's products during each step of the operations.

The ceremonies today will be followed by a second event, Neighbor's Day, which will be held Sat., May 25, to permit especially invited guests from surrounding communities and refinery facilities.

John Hendricks Buried Tuesday

Funeral services for John C. Hendricks, 76, husband of Grace Caroline Hendricks, was held from the J. Millard Cooper Funeral Home, 110 E. Center St., Harrington, Tuesday afternoon. The Rev. Omro Todd of Goldsboro, Md., officiated at the services.

Mr. Hendricks died in the Milford Memorial Hospital late Friday evening. He was born in Pennsylvania, the son of Frank and Jennie Hendricks, but he had resided in this vicinity for many years where he engaged in farming. He retired about a year ago after failing health.

He is survived by ten children: Mrs. Goldie Stayum of Chester, Pa.; Miss Bernice Hendricks of Wilmington; Chalmers, Franklin, Miss Arleen Hendricks, Mrs. John Case and Mrs. Joseph Calvert, all of Harrington; Mrs. James Blades of Felton; Mrs. William Daniels and Mrs. Rhetta Lank, both of Milford; 16 grandchildren and a brother, Alva B. Hendricks of San Diego, Calif.

C. of C. Pleased With Clean-Up, Paint-Up Week

Harrington's clean-up and paint-up week, pleased the president of the Chamber of Commerce, it was said Monday at a postponed meeting at noon at The Wonder R.

Charles L. Peck Jr., pointed out the rash of painting in the business district, while others told of other improvements on downtown buildings. Peck added that other painting was still to be done.

W. Cliff Miller, chairman of the Sign Committee, said that two highway signs, identifying the community, had been painted and were awaiting the Rotary and Lions Club emblems before erection.

Getting back to improvements, Miller said the railroad had built a flower bed near the Clark Street crossing, and that signals and crossing gates would be painted and more hedge cut.

There are still some parking problems, the meeting learned, when Peck appointed a parking committee, as follows: Ernest E. Killen, chairman; W. Cliff Miller, William F. Smith, Thomas Clendening, and Clarence Rash.

Kenneth Aiken explained the extension of Railroad Avenue, from Liberty Street, to the Harrington Ice Plant, needed improving. This land belongs to the railroad. City Manager Smith would not say for certain, but it was his opinion the City might improve it with help from the railroad. W. Cliff Miller, of the railroad, thought the P.R.R. might be interested.

During the summer luncheons will be held the first Monday in the month at The Wonder R.

Legion Urges Display of Flag

The name "Old Glory" was given to our National Flag August 10, 1831, by Capt. William Driver of the brig Charles Daggett. The flag was first carried in battle at the Brandywine (Del.) Sept. 11, 1777. The history of our National Flag is one of the outstanding pieces of American literature and should be read by every American citizen at least once each year. There are 19 days in each year that the flag should be displayed by the citizens of Delaware, and on such other days as may be proclaimed by the President of the United States and the Governor of Delaware.

One of the most important of these is Memorial Day on May 30 of each year.

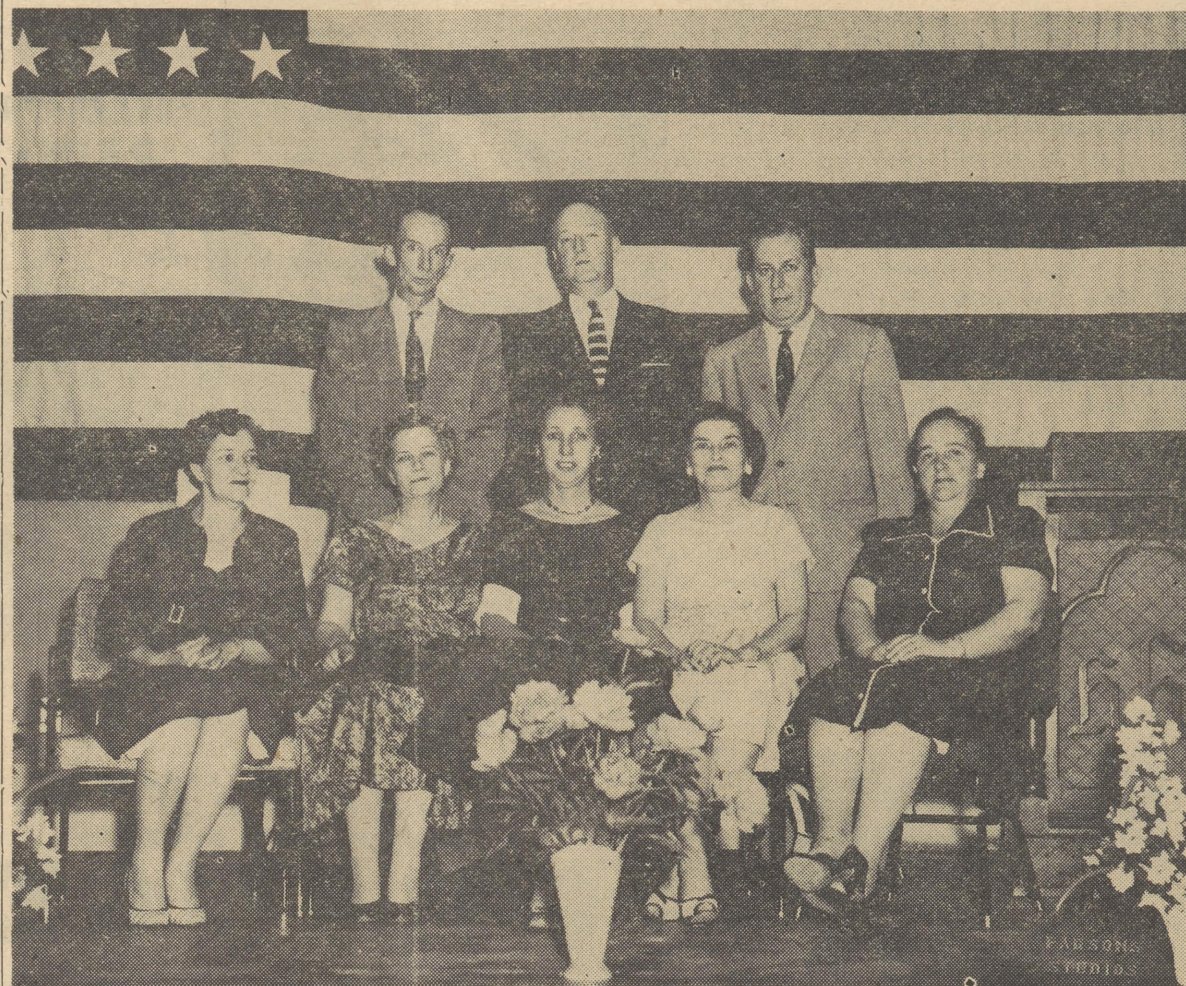
Callaway - Kemp - Raughley - Tee Post No. 7, American Legion has publicized through the columns of The Harrington Journal the dates on which the flag should be displayed and the last two years has sold 150 sets to the citizens of Harrington and vicinity. This does not make the results entirely satisfactory unless the flags are displayed, and the local Legion Post urges all citizens, particularly in the business district, to cooperate by displaying the National Flag this Memorial Day, May 30. It should be flown at half mast (1/4 from top of pole) until 12 o'clock noon, and then full mast the remainder of the day. The Legion is offering flag sets for sale prior to Memorial Day at Tucker's Shoe Store on Commerce St.

Betty Layton Visiting Rome

Miss Betty Louise Layton left Tues., May 21, from New York in flight to attend the International Council of Nurses to be held in Rome, Italy, May 27-31. Miss Layton was elected delegate to the congress which is held once every four years, by the Student-Faculty Organization of the Delaware Hospital School of Nursing and the State Student Nurses' Association.

Miss Layton has been very active, holding several offices during training. This year she is president of the State Student Nurses' Association and president of the senior class. At graduation exercises in April, she was awarded the Eva B. Hayes Memorial Award, given in recognition of the best bedside nurse and outstanding member of the graduating class.

Sightseeing of places of interest in France, Switzerland, and Italy are included in the trip abroad. Miss Layton, daughter of Mr. and Mrs. Wilbur B. Layton, Jr., will complete training in August.



THE CLASS OF '32—It had 15 members, of which the following attended Harrington school's Alumni Association gathering Saturday evening, front row, (left to right): Mrs. Anna Fleming Postles, Milford; Mary Margaret Masten, Wilmington; Mrs. Jane Reed DeLeon, Maple Shade, N. J.; Mrs. Charlotte Beauchamp Harrington, Mrs. Lela Parker Taylor; rear row—Ernest Day, Baltimore; Charles Oland Gleason, Milford, and William W. Shaw.

MEMORIAL DAY SERVICES TO BE SPONSORED BY LEGION

Memorial Day services under the auspices of Callaway-Kemp-Raughley-Tee Post No. 7, American Legion, will be held at Hollywood Cemetery, one mile east of Harrington on Route 14, at 10 a.m. Thursday, according to Post Commander James W. O'Neal.

The Memorial Day Address will be delivered by Rev. Jervis Cook, a past department chaplain of the American Legion of Delaware. The Harrington School band, under the leadership of Legionnaire Melvin Brobst, other pupils of the local school, Boy Scouts, Girl Scouts, including the clergy, will participate in the program. The Legion Committee consists of William F. Smith, chairman, Earl Sylvester, and Benjamin W. Emory.

The annual divine memorial service will be held Sunday in St. Bernadette's Catholic Church, Harrington Manor, at 9:30 a.m. The Rev. John Corrigan will deliver the sermon. Members of the local Legion Post and auxiliary will attend in a body and all veterans are invited to be present.

Odd Facts

The millionth copy of Baden-Powell's "Scouting for Boys" is being presented to his grandson, the Hon. Robert Baden-Powell, in London.

Austria's Salzburg Festival in 1958 will include a modern American opera in its program for the first time. It is Samuel Barber's "Vanessa."



THE TWO OLDEST ALUMNI—Mrs. Sally Spencer, class of '88, of Rising Sun, and William W. Sharp, '89, of Harrington, were the oldest alumni attending the Harrington Alumni Association's gathering here Saturday night.

ALUMNI GATHERING IS OUTSTANDING SUCCESS

Fairgrounds to Undergo \$10,000 In Improvements

Contracts for some \$10,000 in improvements have been awarded by Kent & Sussex County Fair, Inc., T. Brinton Holloway, secretary and general manager, said Wednesday.

A contract has been awarded to George & Lynch to blacktop the area beneath and around the grandstand, while Edgell Construction Company, Dover, received a contract to add blacktop streets, water, and lights to the machinery exhibition area.

Harrington Lumber & Supply Company will repair the grandstand which was damaged about a month ago when a truck ran under it.

The annual sale of concessions for the Kent & Sussex Fair will be held at the fairgrounds at 11 a. m., Sat., June 15, Holloway said.

B. & P. W. Club

Monday marked the installation of the officers of the Harrington Business and Professional Women's Club for the ensuing year. Jeanne McDonald, a past president and charter member of the club served at the installing office. Those inducted into office were president, Mildred Minner; vice-president, Rosella Humes; recording secretary, Hattie Thomas; corresponding secretary, Marie Callaway; treasurer, Betty Lord.

A report of the convention held at New Castle May 3, 4, and 5 was reported upon by the retiring president, Merle Roth and the delegates, Mary Dolby and Mildred Minner. Rosella Humes of the Harrington Club was elected to the office of first vice-president of the Federation at that convention.

Standing committee chairmen for the coming year were announced as follows: career advancement, Jeanne McDonald; finance, Merle Roth; health and safety, Peggy Curtis; program coordination, Rosella Humes; public affairs, Leona Dickrager; international relations, Viola Clendaniel; legislation, Mary Dolby; membership, Jeanette Turcotte; national security, Pearl Hanson; news service, Grace Wanda Quillen; historian, Janet Brown; music, Jeanette Turcotte; sunshine, Bernice Stayton and Parliamentarian, Blanche Cahall. Hostesses for the year are Mary Dolby, Jean McDonald and Blanche Cahall.

W.B.A. News

The officers club of the W.B.A. Revue will meet at Mrs. Virginia Clarkson's home Monday evening.

D.P.S.&L. Loses First Game

The Legionnaires thumped the DP&L team 15-10 Tuesday night. It was the first loss of the season for DP&L. Howell Hitchens pitched all the way for the Legion giving up 10 runs on 15 hits.

Howard Purdue also suffered his first loss of the season in allowing 15 runs on 14 hits and walking 7.

The Moose nine won their first game since being admitted to the league, by trouncing the Farmers, 13-5. Paul Stubbs pitched all the way and shut the Farmers out after the second inning. Third baseman Kannerly hit 2 home runs for the Moose.

Friday night the Guard beat the Legion 5-2 in a well played game. Johnny Schaeffer started on the mound for the Legion and was relieved by Howell Hitchens in the 6th inning. Gil Darby pitched all the way for the Guard. Schaeffer was the loser.

Bond Bread won an easy victory over the Moose 16-3 Wednesday night. The St. Stephen's Episcopal Church has entered a team in the Harrington Softball League. The team will consist of boys connected with the church between the ages of 14 to 18. Louis Neeman will manage the team.

Maag's Sporting Goods Store of Dover has generously donated a trophy to the Harrington Softball League. The trophy will go to the team winning the pennant. Each team may display the trophy for one week.

STANDINGS

	W	L	Pct
DP&L	4	1	800
Guard	2	1	667
Independents	2	1	667
Legion	3	2	600
Bond Bread	2	2	500
Moose	1	3	250
Farmers	1	4	200
St. Stephen's	0	1	000

The schedule is as follows: Independents at DP&L, Thurs., May 23; St. Stephen's at Moose, Fri., May 24; Legion at Moose, Mon., May 27; Moose at Independents, Tues., May 28; Farmers at Bond, Wed., May 29.

The club is buying another hospital bed and also another wheelchair, making eight beds and three wheel chairs in all. At present the club beds are all in use in our community, however, if in need of a bed or wheelchair please contact a member of the club and some provisions will be made for your need.

Mrs. Mark Willey Heads Asbury W. S. C. S.

Mrs. Mark Willey was installed president of the W.S.C.S. of Asbury Methodist Church Sunday evening. Other officers installed were Mrs. Guy Winebrenner, vice-president; Mrs. W. A. Taylor, recording secretary; Mrs. O. T. Roberts, assistant secretary; Mrs. Charles Rapp, promotion secretary; Mrs. T. H. Harrington, treasurer; Mrs. Oda Baker, assistant treasurer; Mrs. Neval Pease, publicity, and sunshine, Mrs. Howard Wagner.

Circle leaders installed were: Mrs. Edgar Graef, Mrs. A. B. Parsons, Mrs. J. A. Masten, Mrs. J. Millard Cooper, Mrs. Fred Greenly, Mrs. Francis Winkler, Mrs. Oscar Gillette, Mrs. C. Fred Wilson and Miss Oda Baker. Chairmen of local church activities was Mrs. George Toppin, assisted by Mrs. Reba Smith, Mrs. Jehu Camper, Mrs. T. H. Harrington and Mrs. Edward Taylor.

Department secretaries are as follows: missionary education, Mrs. Richard Gibson; Christian social relations, Mrs. W.W. Sharp; local church activities, Mrs. George Toppin and Mrs. Charles Greenhaugh; spiritual life, Mrs. Emery Hedgecock; literature and publications, Mrs. Charles Peck, Jr.; student and youth work, Mrs. F. J. Downing; children's work, Mrs. Calvin Wells and Mrs. Melvin Brobst, and supply work, Mrs. Roy Porter.



SHE CAME THE LONG WAY—Mrs. Rose Pope, the former Rose Snowberger, came the longest distance to attend Harrington school's alumni association and banquet Saturday night. Mrs. Pope, of Magnolia, N. C., is a member of the class of 1919. In her school days, she set type by hand for The Journal before the paper had a typesetting machine. Cabbage Brown, president of the association, is looking on.



HOME FOR GREENHAUGHS — Col. William D. Buchanan (left), deputy post commander of Ft. Lee, Va., hands a set of keys to enlisted quarters 400-F to two-year-old David Greenhaugh, son of M-Sgt. and Mrs. Earl E. Greenhaugh. Sgt. Greenhaugh and his wife, Mariam, looking on, were the first enlisted couple to move into the new Capehart housing area. — U. S. Army Photo

Felton School News

Memorial Day

The Memorial Day exercises will be held at 10:30 Thursday on the school campus. The program will be conducted by the Adams-Simpler-Ware Post of the Veterans of Foreign War at a simulated grave.

The program will feature the march to the school campus led by the high school band, the address by the Post Commander, the placing of floral tributes by local patriotic and youth organizations, the salute by the firing squad, and the taps by Dorsey Hammond and Frank Dill.

The Post Commander, Martin Dill, in behalf of the V. F. W., will present a new flag to the school and Dorsey Hammond, president of the Student Council, will accept it.

Polio Shots
Some 240 pupils and members of the faculty received their third and final doses of polio vaccine May 20.

Announcements will be made at a later date when the general public will receive their polio inoculations.

Felton Alumni
The Felton Alumni Dinner-Dance will be held at the Felton Fire Hall at 7 p.m. Following the dinner there will be entertainment by the Tingle Brothers from Wilmington. This group will also furnish the music for dancing.

The classes to be honored are: 1889 through 1905, 1907, and 1932. The Alumni president, Liston Webb, has appointed the following committee chairman: printing, Roland Neeman; publicity, Freda Kelly; letters, Jeanette Webb; invitations, Dorothy Heyd; table arrangement, Kenneth Martin; decorations, Ann Chambers; tickets, Virginia Morrow and Maude Reynolds; hospitality, Dorothy Donaway; registration, Doris Bratten and Virginia Forber.

SENIOR PERSONALITIES
Janet Sherwood

Slim, attractive, and with a crowning glory of beautiful dark hair, Jan makes a lovely picture when she swirls over a dance floor. Both of Jan's hobbies come under the art of motion for Jan loves to dance and swim. Jan's future plans center around clerical work and marriage. Naturally the next question should be to whom will she be married. The answer: to Ralph from Wilmington, of course, for he has been Jan's one and only for about one year and an almost constant companion for two years.

The favorite subjects in Jan's book are study halls and her favorite foods are submarines and spaghetti. The two best cars on the road, according to Janet, are a certain '53' Plymouth and Fords.

Being a non-conformist, Jan's pet peeve does not conform to any set pattern, either, for Jan does not and will not tolerate people who go to bed early.

Norma Jean Walls

Blonde and in love is a wonderful state of being to Jeanie and there are a few who doubt her. Her one and only is a senior at Greensboro High in Maryland and maintains the handle of Joe Tribbett. Since housewife rates a definite first on Jeanie's list for future plans, anyone could easily guess what her plans are for the coming summer. She also plans to engage in secretarial work as a sideline.

At the present, Norman Jean likes shorthand and typing best among her school subjects, and Fords best among the wide choice of cars. She has a like for submarines and spaghetti and just

a decided dislike for setfood. Jeanie's range of hobbies run from sewing to dancing to swimming. She is an excellent seamstress, which is proven by the many pretty garments she wears.

As for Norma Jean's pet peeve—she firmly believes that all girls who make a practice of snatching other girl's men should be deported to the coldest part of Siberia.

Norman Tribbett
This helpful senior boy likes all types of sports and loves to participate in all of them. His favorite subjects of the past four years have been math and agriculture.

The color of a girls hair and eyes does not matter to Norman but he prefers that they have a nice personality. He'll eat almost any kind of food but, please, don't give him salads, especially chicken salad. His favorite cars are Mercury's and Cadillacs.

After leaving school this June, Norman plans to enter the Navy, and after serving his term, will return to the Felton community.

At this particular season of the year, Norman's pet peeve really has a time tormenting him, for Norman heartily dislikes rainy days when a game has been scheduled.

C. A. P.
Saturday, Cadets from Felton Squadron Civil Air Patrol participated in a parade at Dover Air Force Base as part of Armed Force Day. Those cadets were: Virginia Dill, Ellen Maris, Bessie Peterson, Nancy Ludlow, Homer Torbert, Robert Jester, Edmund Bak, and Frank Dill.

The following Cadets of Civil Air Patrol Squadron have received promotions as indicated: Cadet 2nd Lt. Frank Dill to Cadet 1st Lt.; Cadet 1st Sgt. Robert Jester to Cadet 2nd Lt.; Cadet 1st Class Edmund Bak to Cadet 1st Sgt.; Cadet 2nd Class Terry Turner to Cadet Tech. Sgt.; Cadet Dorsey Hammond to Staff Sgt.; Cadet Basic Ronnie Stumpf to Cadet 2nd class; Cadet Basic Al Greenwalt to Cadet 2nd class.

These promotions were made on the basis of attendance, interest and upon completion of the basic requirements.

Fashion Show

The 6th annual fashion show was held Monday evening, in the Felton Fire Hall, directed by Mrs. Mildred E. Wells.

Grades seven through 12 made

garments varying from aprons to date wear. The 7th grade modeled aprons and gathered skirts; 8th grade, skirts and sleeveless blouses; 9th grade, dusters and cotton dresses; 10th grade, party dresses; 11th grade made rayon and wool suits; 12th grade also made rayon and wool suits.

Miss Emily A. King, State Director of Home Economics, awarded the prizes for the best garments in the following classes: 7th grade, best two aprons, Barbara Everts and Ann Holliday; best two gathered skirts, Louise Cohee and Barbara Everts. 8th grade, best two blouses, Carole Wright and Ernestine Tribbett; best two gored skirts, Barbara Postles and Ernestine Tribbett. 9th grade, first second and third awards for cotton dresses, Gerry Barr and Ruth Edwards; best three awards for dusters, Maria Pizzadilli and Edith Postles. 10th grade, first, second and third awards, Joyce Wyatt, Peggy Reed, and Evelyn Walters. 11th grade first, second, and third awards, Jean Miller, Shirley Hurd, and Jean Reed. 12th grade, first, second, and third awards, Laura Belle Sharpnack, Thelma Griffith and Doris Legates.

Prizes for the fashion show were presented by: Danneman's Fabric Shop of Dover, Felton P. T.A. and the Home Shop of Felton.

Field Day
Pupils in the elementary grades and Junior High School will participate in field day athletics Friday beginning at 12:30 p.m. The program is under the supervision of Joseph M. Kerns, director of athletics.

Softball
The girl's softball team consisted of: pitcher, Marlene Hughes; catcher, Jean Reed; first base, Jean Everett; second base, Joyce Wyatt; shortstop, Evelyn Walters; third base, Shirley Hurd; left field, Carole Wright; right field, Barbara Hoffner; center field, Mary Lou Lander; manager, Jo Ann Robbins.

The girls played some very good ball this year, although they ended with two wins and four losses. We are hoping this team will be with us next year ending with a better total.

Burrsville

Union Sunday School 10 o'clock with Robert Collins, superintendent. Worship service 11 o'clock with Rev. John H. Anderson the pastor in charge. Wesley Sunday School 10 o'clock, Norman Outten, superintendent.

Charles Baker is spending a ten day furlough with his parents, Mr. and Mrs. Francis D. Baker.

Mrs. Mary Stafford and sister, Mrs. Melvin James, of Milford visited Mrs. James daughter and family, Mrs. Jack Gibson and Mr. Gibson of Queene Anne, Md., Sunday afternoon.

Mrs. C. R. Welch accompanied Rev. and Mrs. Manuel Buarque to Conference Sunday, when Rev. Buarque was ordained a minister.

Mr. and Mrs. Harrison Kirby and family of Seaford visited Mr. and Mrs. Winfield Willis and family Sunday afternoon.

Mr. and Mrs. Jake Cannon of Greenwood visited her grandmother, Mrs. Ida Harmoning Monday evening.

The community was saddened to hear of the death of Mrs. Elizabeth Slaughter, widow of the late Andrew Slaughter in Easton Hospital Saturday night.

Sixty residents of Foulda, Isle in the Shetlands, radioed to Scotland an appeal for food. Storms had kept a supply ship away for 44 days.

Felton Alumni Association Elects Officers; Makes Final Plans For Banquet

At the business meeting of the Felton Alumni Association, last Tuesday night, the following officers were elected for the coming year. Freda Wolkoski Kiley

'47, president; Jeanette Robbins Webb '41, first vice-president; Roland Neeman '45, second vice-president; Doris Brittingham Bratton '47, corresponding secretary; Helen Holliday Webb '47, recording secretary and Kenneth Martin '40, treasurer. Final plans were made for the

annual banquet which will be served in the Felton Fire Hall by the Ladies Auxiliary, this Saturday evening, May 25, at 7 o'clock. The banquet will be followed by entertainment and dancing, also at the Fire Hall. The classes being honored are classes 1889 through 1905, the

class of 1907 and the class of 1932. The Alumni will give their usual sportsmanship awards to a senior boy and girl. A firm in Jidda, Saudi Arabia, is stocking electric shavers.

Building and loan societies in Britain may face a law compelling them to cut their interest rates to correspond to cuts in the British bank rate. Such a bill has been introduced by Marcus Lipton, Socialist member of the Commons.

RAINY DAY OR SUNNY, ACME SAVES YOU MONEY
AND Acme Gives "S.H." GREEN STAMPS

★ Only 1200 stamps fill your book.
★ Each book worth from \$3.00 to \$3.50 on famous S&H merchandise.
★ America's largest and most reliable stamp plan.

NEW LOW PRICE!
DONALD DUCK FROZEN
ORANGE JUICE
6-oz cans **59¢**

NEW LOW PRICE!
IDEAL CALIFORNIA
Lemonade
6-oz cans **69¢**

DEL MONTE DRINK 2 46-oz cans 49¢
LOUELLA EVAP. MILK 6 tall cans 77¢
PRINCESS MARGARINE 2 lbs 39¢
MAJESTIC PICKLES Dill or Sour qt jar 29¢
HAWAIIAN PUNCH 3 46-oz cans \$1.00
APPLE SAUCE Glenside 2 16-oz cans 29¢
NABISCO CHIPPERS 8 1/2-oz pkg 35¢
HEINZ KETCHUP 14-oz bot 23¢

WESTON'S COOKIES
Fancy Assortment 10-oz pkg **29¢**
George Inn Assortment lb pkg **39¢**

MUSSELMAN'S
Apple Sauce 2 15-oz jars **37¢**

Hom-de-Lite **SALAD DRESSING** pt jar **29¢** qt jar **49¢**
Hom-de-Lite **MAYONNAISE** pt jar **35¢** qt jar **59¢**

Acme meats are good to eat.
LANCASTER U. S. "CHOICE" TENDER BEEF

Pot Roast
lb **45¢**

BONELESS BEEF ROAST lb **69¢**
FRESHLY GROUND BEEF 3 lbs **99¢**
LANCASTER FRANKS lb **43¢**

SMALL, LEAN SMOKED SKINNED
HAMS

Full Shank Half; lb **43¢**
Full Butt Half; lb **53¢**

Slices of Ham lb **95¢**

Leave your Order Now for a famous Lancaster Brand Shankless, Ready-to-Eat Ham for Decoration Day Holiday Week-End.

Lancaster Canned Chicken 3-oz 1.19 | Lancaster Sliced Bacon 1/2 lb pkg 39¢
Imported Canned Hams 2 lbs 1.99 | Lancaster Braunschweiger 8-oz ea 25¢

FARMDALE PIES Chicken, Beef or Turkey 5 for **99¢**
SMOKED TONGUES Lancaster Steer lb **45¢**
FISH STICKS Arctic Seal 3 pkgs **85¢**

Acme Summer Salad Carnival
Fresh Crisp Cal. Iceberg Lettuce
2 large heads **25¢**

Romaine and Boston Lettuce head **10¢**

Large Fla. Cucumbers 2 for **15¢** | Local Spring Onions 2 bchs **15¢**
Fresh, Crisp Radishes 2 bags **15¢** | Fresh Watercress full bunch **15¢**

Acme has everything you need for delightful, healthful and appetizing salads -- Hot House Tomatoes, Escarole, Fresh Red Beets, Endives, Avocados, etc.

LEMON SALE
Juicy, Cal. Lemons for Your Summer Refreshment
EXTRA SPECIAL! DOZ 33¢

Heinz Cider VINEGAR pt bot **19¢** qt bot **31¢** | Ideal Cider VINEGAR pt bot **14¢** qt bot **25¢** | Ideal SALAD OIL pt bot **33¢** qt bot **63¢** | For Your salads WESSON OIL pt bot **39¢** qt bot **75¢**

FROZEN FOODS
IDEAL CALIF. FANCY PEAS 2 10-oz pkgs **29¢**
IDEAL QUALITY French Fries 2 9-oz pkgs **29¢**

Ideal or Sunshine Sliced **Strawberries** 5 10-oz pkgs **99¢**

Seabrook Farms Frozen Foods
New! Rissolle Cooked Potatoes 7-oz **23¢**
Seabrook Cauliflower Florets 10-oz pkg **27¢**
Seabrook Chopped Spinach 2 10-oz pkgs **39¢**

ACME BAKERY SPECIALS!

Reg. 19c Supreme Seed **Rye Bread** 2 lbs **35¢**
Reg. 69c Strawberry Cream **Party Layer Cakes** ea **65¢**
Reg. 59c Streusel **PEACH PIES** Special **49¢**
Save a Nickel or more -- get **Supreme Bread** large 1-lb loaf **19¢**
FARMDALE ENRICHED BREAD loaf **16¢**
HOME-STYLE BREAD big 1 1/2-lb loaf **23¢**

Extra Special Sale Sunnydell
Ice Cream 1/2 gal ctn **79¢** Popular Flavors

IDEAL INSTANT COFFEE You can't buy better -- Why Pay More? 6-oz jar **\$1.19**

Iced Tea Days are Here!
IDEAL ORANGE-PEKOE TEA 4-oz pkg **39¢**
IDEAL O.-P. TEA BAGS pkg 48 **55¢**

DAIRY BAR
EXTRA SHARP CHEESE lb **79¢**
LONGHORN CHEESE lb **49¢**
LOAF CHEESE Glendale Club 2 lb loaf **73¢**

Louella BUTTER America's Prize-Winning The Finest Butter in America -- There's no substitute. Richland Creamery Butter lb **67¢**

Borden's Chateau or VELVEETA 2 lb pkg **89¢**
1/2 Price Sale **KEE Soap Flakes** 2 lbs **39¢**

"SILVER ARBOR"
\$8.95 place setting

Clarke & McDaniel
GIFT SHOP
Lockerman St. Dover, Delaware

Acme Gives You Cash Savings + S&H Green Stamps

Property Transfers

Earle R. & Anna T. Workman, Mispillion Hund. to William H. Draper, Jr., N. Murderkill Hund. loc. Mispillion Hund. lying on west side of pub. rd. leading from Harrington to Farmington adj. lands now or late of J. Powell, Joseph Von Goerres, Green Workman & lands of others. 124 acres, more or less. \$10 & other considerations.

George H. Davis, Milford to Roland J. Davis, Milford loc. lying in Milford Hund. beg. at a stake in the northern side of pub. thorough-fare to Wane Ave. 7,200 sq. ft. \$1 & other considerations.

George H. Davis, Milford to Roland J. Davis, Milford loc. lying and being at northwest cor. of Washington & 7th Sts. bounded on north by lands of John A. Nailor. \$1 & other considerations.

George H. Davis, Milford to Roland J. Davis, Milford Hund. loc. Milford, with a frontage on north Washington St. adj. lands now or formerly of John A. Nailor, lands of Donald Wilkie on north, lands of Annie Evans on south. 7,200 sq. ft. more or less. \$1 & other considerations.

George H. Davis, Milford to Roland J. Davis, Milford Hund. loc. lying & being in City of Milford, bounded on west by Washington St., north by Annie Evans, east by John A. Nailor. 7,200 sq. ft. \$1 & other considerations.

Russell W. & Mary H. Davis et ux, Milford to Ruth E. Wilkins, Georgetown loc. lying & being at cor. of North Washington & 6th Sts. in Milford. 3,600 sq. ft. \$1 & other considerations.

Ruth E. Wilkins, Georgetown to Russell W. Davis, Milford loc. lying & being in Milford at a cor. of North Washington & 6th Sts., in Milford. 3,600 sq. ft. \$1 & other considerations.

Amanda & Herman Watson, Philadelphia to Harold S. & Betty J. Brady, Milford loc. lying & being on west side of Rehoboth hwy. in City of Milford, lot No. 5 & lands of Hattie Brady, 9,000 sq. ft. \$1 & other considerations.

Delaware Realty Exchange, Inc., Delaware to Landy & Patricia Adams, Dover loc. Ocean Drive Manor Develop., lot No. 24, leading from Dover to Frederica. \$1125.

Delaware Realty Exchange, Inc., Delaware to Hubert & Lucille Williams, Dover loc. lying on west side of proposed south bound dual hwy. U. S. rte. No. 113, leading from Dover to Frederica, lot No. 14, Ocean Drive Manor Develop. \$1125.

The Town of Smyrna, Delaware to James R. & Velma B. deFord et ux, Smyrna loc. Smyrna, lying & being on easterly side of Main St. \$400.

Ida Belle & Walter Turner, Smyrna to Margaret T. Harrison, Smyrna loc. Smyrna, lying on southeast side of Commerce St. bet. Delaware & Union Sts., adj. Commerce St. on northwest, Citizens Hose Co., No. 1 of Smyrna, on northeast & southwest, Manse of First Presbyterian Church of Smyrna, on southwest. 5,418 sq. ft. more or less. \$5 stamps \$5.50.

Collins Gardens, Inc., Delaware to Manuel & Ruby Espina et ux, E. Dover Hund. Capitol Green, sec. 2-A lot No. 45. \$5 stamps \$12.10.

Collins Gardens, Inc., Delaware to Perry & Jeannine Heishman, E. Dover Hund. Capitol Green, sec. 2, lot No. 40. \$5 stamps \$12.65.

Collins Gardens, Inc., Delaware to Paul B. & Susan W. Crane, E. Dover Hund. loc. Capitol Green sec. 2, lot No. 32. \$5 & other considerations.

Ellender J. & Joseph S. McDaniel, Jr., Dover to David P. Buckson & George B. Wright, Dover. loc. No. 1, E. Dover Hund. lying on east side of South State St., adj. No. 1, Elva C. Taylor, the Arden Building, Inc., loc. No. 2, E. Dover Hund. lying on east side of South State St. adj. No. 2, Joseph S. McDaniel, Jr., Ellender J. McDaniel, Prentice Hall Inc. dim. No. 1, 4,100 sq. ft. \$10 stamps \$44 & other considerations.

The Town of Leipsic, Delaware to Leipsic Volunteer Fire Co., Leipsic loc. Leipsic, lying east of Main St. bounded on north by Francis T. Gooden, George L. Gooden. \$1 & other considerations.

Raymond & Carol Belcher, Jr., et ux, Dover to Betty K. & Merle E. Cox, et ux, Dover loc. Morris Estates, lot No. 42 8,932 sq. ft. \$12,500.

Eastover Hills Company, Delaware to James B. Clements & Marjorie McKnight, Dover loc. lots No. 47 & 48, Eastover Hills. \$3995.

Alva E. & Sarah V. Hutchinson et ux, W. Dover Hund. to Thomas A. & Alice R. Hutchinson et ux, Wyoming loc. W. Dover Hund. lying on north side of gravel pub. rd. Hour Glass Farm via Bethesda Church, Wrights Crossroads. 11.25 acres. \$1200.

Frank R. Fetters, Wyoming to Harriett & George Hughes, Jr., Dover loc. lying on pub. rd. leading from Hazletville to

Maryland line via of farm formerly of Luther Marlowe adj. lands now or late of Jennie Moore and Herbert Gladden, Frank Munsen, Thomas Warren other lands of vendor & other lands. 20 acres, more or less. \$4500.

Margaret & Wesley Walls, Maryland to Merrill & Doris Jones, Maryland loc. w. Dover Hund. lying on north side of pub. rd. leading from Maryland to Dover adj. lands formerly of Elmer Bowdle, now of Elmer Luton, lands of Clarence Phillips & others. 25 acres, more or less. \$4000.

William & Mildred Hawkins, Dover to The Dover Special School District, State of Delaware loc. Dover, lying on north side of st. hwy. leading from Dover to Maryland on Horsehead rd. \$9000.

M. A. Hartnett, Inc., Dover to William & Mildred Hawkins, Dover loc. lot No. 43, on plot of lots of James Teat in E. Dover Hund. \$3500 stamps \$3.85.

Alice E. Taylor, Dover to Muriel H. Coffin & John R. Coffin, Jr., Dover loc. E. Dover Hund. lying east of but not adj. to st. hwy. leading from Camden to Dover, lots No. 70 & 71, Taylor Estates. 15,000 sq. ft. more or less. \$9000 stamps \$1.10.

Hilda & William Tomlinson, Duck Creek Hund. to William & Helen McFadden, Smyrna loc. lying on northeast side of Main St., adj. lands now or formerly of Bessie Robinson on north, lands now or formerly of heirs of Mary Spruance on west. Be the contents what they may. \$4800 stamps \$5.50.

Collins Gardens, Inc., Dover to Ervin & Evelyn Pooos, Jr., E. Dover Hund. loc. lot No. 37, Capitol Green, sec. 2-A \$5 stamps \$13.20.

Samuel & Phyllis Miller, Dover to Richard & Dorothy H. Johnson, Camden loc. E. Dover Hund. lying west of but not adj. U. S. rte. No. 113 leading from Dover to Barkers Landing adj. on south, other lands of grantees, on west, lands of Christian Zimmerman, other lands of grantors on north. 62 sq. ft. more or less. \$10.

Richard & Dorothy Johnson, Camden to Samuel E. Miller, Dover loc. E. Dover Hund. lying on west side of U. S. rte. No. 113 leading from Dover to Barkers Landing 50.8 sq. ft. \$10.

Willard & Margaret Boyce, Dover to Delaware Produce Growers, Inc., Delaware loc. Little Creek Hund. lying on east side of old original U. S. hwy. No. 13, a short distance north of Denneys Cor. adj. lands now or formerly of W. G. Bush. 0.157 acres, mre or less. \$7750 stamps \$8.80.

Earl Asher, Dover to Elmer & Natalie Gray, Cheswold loc. on west side of dual hwy. leading from Dover to Smyrna, being lot No. 14, on plot of lands of Edgar Boggs. Be the contents what they may. \$300 stamps \$3.30.

Ben E. Miller, W. Dover Hund. to Daniel & Polly Plank, W. Dover Hund. loc. W. Dover Hund. lying on southeast side of pub. rd. leading from Dinah's Cor. to Parsons' Cor. adj. lands of David Miller. 64 acres, more or less. \$3000.

Parks & Elizabeth Warren, Wyoming to Joseph & Alice Trolier, Wyoming loc. E. Dover Hund. lying west side of black-top rd. leading from Wyoming northward to Dover-Hazletville rd. adj. lands now or formerly of Walter Cooper, lands of Virgie Warren. 1/2 acre, more or less. \$14,300 stamps \$15.95.

Edgar & Gladys Hill, S. Murderkill Hund. to Chas. & Gladys Dill, Felton loc. S. Murderkill Hund. beg. at a stake in northern side of st. hwy. leading from Harrington via Hills Market to Felton. 11,250 sq. ft. \$1 & other considerations.

George & Pauline Luff, Henderson, Md., to Christopher & Barbara Lee, Mt. Holly, N. J., loc. N. Murderkill Hund. lying on southerly side of pub. rd. on st. hwy. leading from Carter's Bridge to Henderson, east side of adj. hwy. from Carter's Bridge to Goldsborough. 122 1/2 acres. \$10 stamps \$8.25 & other considerations.

Loretta M. Kobaz, Wilmington to Richard J. Kobaz, Woodside loc. N. Murderkill Hund. nr. Woodside, lying on south side of 9 ft. concrete hwy, leading from Woodside to Rising Sun. \$3000.

Richard & Patricia Kobaz, Woodside to Rebecca Dunn, Dover loc. Par. No. 1, in Woodside southerly side of right-of-way line of hwy. leading from Woodside to Rising Sun. 166 acres. Par. No. 2, nr. Woodside, lying on the southerly side of 9 ft. rd. leading from Woodside to Rising Sun. \$1.

Houston & Anna Short et ux, Felton to Charles & Christine Farrow, Harrington loc. west side of pub. rd. leading from Felton to Fox Cor. known as ext. of Church St. in Felton. \$6500.

John & Elizabeth Ware, Felton to Nelson & Daisey Donophan, Felton loc. situated in S. Mur-

derkill Hund. being on north side of old Felton to Masten Cor. rd. \$500.

Louis & Dolly Zbel, Felton to William & Margaret Luff, Houston loc. S. Murderkill Hund. on old st. hwy. from Canterbury to Pratts Branch adj. lands now of late Gottlieb Rentz, lands of late John Downham, lands now or late of John Schabinger & lands of other. 21 acres-140 sq. perches, more or less. \$8500 stamps \$9.90.

Leroy & Bernice Wilecuts, Milford to Myra McIlvaine, Magnolia loc. in Milford Hund. western edge of Milford to Bennett Shop hwy. 11,250 sq. ft. \$10.

Frisby Kirby etal, Milford to Harvey & Violet Marvel, Milford loc. Milford adj. Milbourne Berridge, Robert Davis, James Abbott & James Webb. Be the contents what they may. \$3850 stamps \$4.40.

Frisby Kirby, Milford to Mary E. Fox, Milford loc. on south side of North West Front St. adj. North West Front St. on north, lands of Charlie White on east, lands formerly of Helen Hopkins on west. \$3700 stamps \$4.40.

John & Ruth Wilson et ux, Dover to Wesley Junior College Alumni Assoc., loc. north side of Cecil St. east line of alley bet. Bradford St. & Gov's Ave. \$17,500.

John & Anna Longbotham, Milford Hund. to Edwin F. Short, Milford Hund. loc. Milford, lying on southwesterly side of black top road leading from Thompsonville to South Bowers rd. to Scotts Cr. & Big Stone Beach adj. lands of grantors on southwest, Samuel Short & Donald Jester on southwest. 5 acres, more or less. \$500 stamps .55 cts.

Edwin & Amanda Short, Milford to Samuel & Bernice Short, Milford loc. Milford, lying on southwesterly side of black top rd. to Scotts Cor. & Big Stone Beach adj. lands of John Longbotham on northwest, Samuel Short & Donald Jester on southwest. 5 acres, more or less. \$500 stamps .55 cts.

Jennie R. Short, Milford to Douglas & Marjorie Fry, Milford loc. Milford, lying on east side of duPont hwy. leading from Frederica to Milford adj. Emil Danegger, Gordon Legates & Volita Kirby. 17 acres. \$1 stamps

.55 cts.

Collins Gardens, Inc., Dover to Victor & Hazel Jacobs et ux, E. Dover Hund. lot No. 43, sec 2-A, Capitol Green. \$5.

Ralph S. Troupe, Little Creek to Paul & Ella Ennis, Little Creek loc. Little Creek Hund. lying on west side of dual st. hwy. leading from Dover to Smyrna 22,500 sq. ft. \$10,500.

Edgell Construction Co., Inc., Dover to Dover Sand & Gravel Co. loc. E. Dover Hund. lying on south side of black top rd. leading from old bay rd. to st. hwy. rte. No. 113 to Lebanon adj. Christian Zimmerman on north south and west lands of U. S. Government on east. 17.8 acres, more or less. \$1 stamps \$12.65 & other considerations.

George & Edith Hill, Dover to Rodney & Daisey Hill, Dover to lot No. 18, plot of Lakeview. \$4800.

Elwood & Frances Weller, Hartly to Hartly Episcopal Church loc. Hartly, lying northeast but not adj. to st. hwy. leading from Hartly to Dover adj. on south & west other lands of Hartly M. E. Church & other lands of Elwood Weller. 6,050 sq. ft. more or less. \$200 stamps .55 cts.

John & Catherine Lepore, Dover to William F. Malone, Dover loc. E. Dover Hund. lying north side of Lakeview Ave., Taylor Estates. 12,000 sq. ft. \$1.

Dover Builders, Inc., to William & Alice Streicher, E. Dover Hund. loc. lot No. 7, block H., Rodney Village, sec. No. 1. \$10 stamps \$13.75.

Sallie Anthony etal, Harrington to Jesse & Jean Trotta et ux, Harrington loc. Mispillion Hund. lying on both sides of pub. rd. leading from Harrington to Vernon via Benj. Potter adj. on north by George Coutant, east by Marsha Hope Ditch, south by James Walter Anthony, west by Elizabeth Fleming. 80 acres. \$4500.

Edith Hobbs, Harrington to Everett Hobbs, Harrington loc. Mispillion Hund. lying on west side of pub. rd. leading from Hickman to Burrsville, north by Fred Fifer, George Redden, south by Martha Wooters, west Delaware & Maryland State Line. 115 1/2 acres. \$1 & other considerations.

Trinity Methodist Church Notes

Sun., May 26, Trinity has Sunday School at the regular hour, 9:45 a.m. The Methodist Youth Fellowship meets at 6:30 p.m. in the church annex. Also, the evening worship is at the usual time, 8 to 8:45 p.m.; the pastor is talking on "Prayer."

However, our regular morning worship is to be held jointly with Asbury Methodist at 11 a.m. It is customary to unite for the Memorial-Sunday service, and to alternate the place. Last it was Trinity, with the Trinity pastor preaching.

The W.S.C.S. holds its weekly prayer meeting in the church annex Monday at 10:30 a.m. It is led by Mrs. John Walls.

The regular meeting of the official board will be Monday at 7:30 p.m. in the church. This board is composed of the members elected at our Fourth Quarterly Conference and who take office immediately after the annual conference which has just been held. At this meeting of the official board its officers for the coming year will be chosen; and in conjunction with this, meeting of all the commissions are also called, likewise for the purpose of completing organization for the coming year.

At the last meeting of the O.U. R. Class the following officers were elected, to take office in the fall: president, Bailey Minner; vice-president, Charles Lare; secretary, Mrs. Charles Lare; treasurer, John Minner; sunshine secretary, Mrs. Bailey Minner.

At the recently concluded peninsula annual conference, held in Wilmington, the pastor of Trinity was reappointed for another year.

A Fairchild F-27 turboprop plane—first of its kind for Ecuador—is in order in Quito.

Financed by a U. S. \$900,000 loan, Quito and Guayaquil, Ecuador, will have new airfields.

Saudi Arabians are buying U.S. sports goods.

Odd Facts

Chile is financing its steel mill machinery with a \$16,000,000 American loan.

All-weather main roads in Turkey now cover 11,500 miles, Ankara learns.

India has issued a directory of its 2,500 students now in American colleges.

The United Kingdom foresees a peak coal output of 250,000,000 tons by 1970.

A bill to suppress witchcraft is before Parliament in Cape Town, South Africa.

The Sudan now has 10 airfields and 11 airstrips and will add six strips in 1957.

Veha Akat, domestic airline of Laos, now has seven planes and four on order.

The Sarawak Government (on Borneo) has boosted import duties on liquor.

Busts are out and the "lady-like look" is in, says London's "Big Ten" opticians.

Israel is making a strong bid for more cruise liner visits this year to Tel Aviv.

Freight rates between Colombo, Ceylon and Northern Europe have been upped 10 percent.

Hong Kong Airways recently made its first flight to Seoul, Korea, to open a new air service.

American travelers in the Far East, increasing rapidly, are now spending an estimated \$45,000,000 a year, Tokyo reports.

Mrs. Moyra Bannister, wife of Dr. Roger Bannister, first four-

minute miler, has given birth to a daughter in London.

The U. S. Atomic Energy Commission has licensed export of a research reactor to the Netherlands, The Hague reports.

India's Railway Board is expected to order 100 diesel locomotives in America.

Air India International is replacing Constellations with Super-Constellations.

SOYBEAN SEED
CERTIFIED CLARK
ELMER ROLAND
Viola, Del. Phone Felton 4-4614

NOTICE

On and after the first day of June A. D. 1957 all State license fees for the year 1957 are due and payable to the State Tax Department at Old State House, Dover, Kent County, Delaware, and if not paid on or before the 30th day of June 1957, a penalty of five per centum will be added. On all licenses not paid in July an additional penalty of ten per centum will be added, and on all licenses not paid during the month of August a further penalty of ten per centum will be added, making a total of twenty-five per centum on all licenses paid after the month of August, in accordance with the Delaware Code of 1953.

C. DOUGLASS BUCK,
State Tax Commissioner.

ERNEST RAUGHLEY INSURANCE AGENCY
Complete Service For Your Insurance Needs
Harrington, Del. Phone 3551

Sales - REAL ESTATE - Service

★
ARNOLD B. GILSTAD
HARRINGTON, Del.

RANDALL H. KNOX, Sr. Telephone: 3551
Sales Associate Office 3551
Telephone Frederica 5-5696 Res. 8402

Drive with care . . . everywhere!



New Chevrolet station wagons have Body by Fisher, of course. Above, the Bel Air 4-door Townsman.

They're eager-beaver beauties... these Chevrolet wagons!

Talk about hard-working wagons! Chevrolet offers you the handsomest line-up of all. Whether you hanker for a wagon for do-it-yourself projects, to tote outdoor gear, or as an all-round family car—here are eager beavers to see.

There are two-door and four-door models, with six- or nine-passenger capacities. They convert in a flash to take up to half a ton of cargo. The tailgate opens first, so there are lots of loads you can slip in without having to open the topgate.

Being Chevrolets, they have the performance, too; up to 245* V8 horsepower that's frisky, smooth and quiet. The one you choose will be a joy to handle with its steady way of going, its easier steering and alert response. See your wagon at your Chevrolet dealer's soon!

*Optional at extra cost. 270-h.p. high performance V8 engine also available at extra cost.

GET A WINNING DEAL ON THE CHAMPION!

CHEVROLET

Only franchised Chevrolet dealers display this famous trademark

See Your Local Authorized Chevrolet Dealer



Above, 2-door 6-passenger "Two-Ten" Handyman.

It's such a comfort to take the bus and leave the driving to us!

GREYHOUND
MEREDITH & SON HARRINGTON PHONE 3675

SPREAD LIME SERVICE BY EXPERIENCED DRIVERS

We Offer For Sale High Magnesium Agricultural LIMESTONE

Produced by DAVID M. BURKHOLDER, Ephrata, Pa.

Guaranteed Analysis: Calcium Oxide 36% Magnesium Oxide 14% Sieve Mash 98% thru 20 Mesh

PRICED AS FOLLOWS

Kent County South of Magnolia \$7.80 a ton
Kent County North of Magnolia \$7.40 a ton
Sussex County \$8.20 a ton

ANNOUNCEMENT

Having opened a warehouse near Clayton we are pleased to announce that this will permit us to give you more efficient service.

GOVERNMENT PURCHASE ORDERS ACCEPTED

ROGER A. DAVIS & SON
Telephone Whiteoaks 4131 or 2651 HARTLY, DEL.

THE HARRINGTON JOURNAL

Out of State \$3.00 Per Year
 E. H. BURGESS AND W. C. BURGESS Publishers
 C. M. BURGESS Editor
 W. C. BURGESS Associate Editor
 at Harrington, Delaware, under the Act of March 3, 1879.
 Entered as second-class matter August 16, 1946, at the Post Office
 Office of Publication, 207 Commerce Street, Harrington, Delaware
 Subscription Rates \$2.50 Per Year

**Santa Claus, Santa Claus, We Love
 You Dearly, Well Just Because**

That fellow with the chin whiskers, so dreaded at income tax time, would appear more apropos if he sported a red headpiece and cavorted about the country in a sleigh drawn by reindeer.

United State Senator John J. Williams, in a letter to The Harrington Journal, writes:

"In the past two years our poultry industry has been in a serious state of over-supply, with farm prices below the cost of production. Much to our surprise we have found that during this interval the government, through six different lending agencies, has been extending loans and encouraging the building of new poultry houses, thereby increasing the production in other areas during this same period in which they have been urging our farmers to curtail operations."

In a statement to the Senate Monday, the senator stated that during the past several months the poultry industry (both those producing broilers and those producing eggs) has been losing money.

During this period, the Department of Agriculture, the senator explained, has persistently been urging and strongly recommending that farmers in the major producing areas curtail their production.

"It has now been definitely established that millions of dollars of government money have been pouring out from six different agencies through loans, many of them unsecured, in various areas of the country for the sole purpose of building new poultry houses and financing the increased production of both broilers and layers," he wrote.

"At the same time that these millions of taxpayers' dollars were being used to expand this overproduced industry, the Department of Agriculture was issuing bulletins and warnings to the regular broiler and egg producers urging the curtailment of production.

"To illustrate further the inconsistency of the Government's having six different lending agencies scouring the country to get rid of the taxpayers' dollars in loans to finance an overexpanded industry, we find that during this same interval a seventh government agency was spending approximately 12 million dollars buying surplus eggs to remove them from an over supplied market.

"The broker producing industry has throughout the years consistently rejected all offers of government price supports, maintaining that they wanted a free industry, and there is strong suspicion that this inconsistent policy of certain government officials, deliberately pouring millions of dollars into new areas to finance increased capacity and increased production at a time when the industry was in a serious state of over supply, has been done with the deliberate intention of forcing the poultry industry into such a serious economic state that it would have to renounce its previous independence and come under price supports."

The Small Business Administration is one of the six culprits. It made loans of \$1,053,405, which included a juicy \$100,000 to a Missouri turkey grower and hatcheryman. Yet Santa has been urging turkey growers, for the past two years to reduce their flocks.

Besides the SBA, the other culprits are the Farmers Home Administration, the Federal Housing Administration, Banks for Cooperatives, Federal Land Banks, Federal Intermediate Credit Banks.

But, of course, Santa's aides must keep on giving or they will be out of jobs.

Kent Home Doings Veterans News



By CHARLOTTE L. SWANSON
 KENT COUNTY
 Home Demonstration Agent

Interested in three days at college? Plan to come to Home-makers Short Course at the University of Delaware, Newark, June 17 to 20!

The program is built around the theme, "Opportunities and Responsibilities." It includes general sessions each day, with speakers and panels to present different phases of the theme. Classes on opportunities and responsibilities for leadership are scheduled.

Other classes are planned on our opportunities for self-expression. They are: music appreciation; water color painting; speech clinic, enameled jewelry; a look at the new you.

Evening programs will include a talent night, a trip to the Brandywine Music Box and an international program.

If you attend, you will be living in a college dormitory and eating in the dining hall for the three days—no dishes to wash!

The cost will be \$16 for the entire program—including \$3 for the trip to the Brandywine Music Box. If you are a Home Demonstration Club member, you will receive a newsletter soon with the complete program and the registration blank. If you would like to go, but do not belong to a club, please contact me before June 3. The address is: Home Demonstration Agent, Post Office Box 30, Dover, Delaware.

Czechoslovakia will show for the first time at this year's Cologne Trade Fair.

QUESTIONS AND ANSWERS

Q—My world War II permanent GI insurance lapsed, and VA automatically continued it in force under extended term insurance. I want to reinstate my permanent policy. Will I have to take a physical examination?

A—If you reinstate within five years prior to the date the extended insurance would expire, you will not need a medical examination or any medical evidence of good health. If you reinstate after that time limit, you will be required to take an examination.

Q—Is a "six-month enlistee" eligible for VA hospitalization after he leaves military service?

A—He would be eligible if he was discharged under other than dishonorable conditions for a line of duty disability, or is receiving compensation for a service-connected disability.

Q—I served in World War II, was discharged and went to school under the World War II GI bill. I served again during the Korean conflict. Would I be eligible for more schooling under the Korean GI Bill, and if so, how much?

A—You may be eligible for training under the Korean GI Bill. To determine how much, subtract the amount of World War II GI schooling you've had from 48 months. You will be entitled to the difference, so long as it does not exceed 36 months of Korean GI training.

Q—I have a Korean GI term insurance policy for non-disabled veterans. Could I convert it to a permanent plan?

A—No. The law prohibits the conversion of your type of Korean GI term insurance to permanent plans. Only those issued to Korean veterans based on service-connected disabilities may be converted.

Sudan Airways earned \$196,000 in 1956, first profit in its history, Khartoum learns.

Sulky Slants



By MRS. DAVE (PAT) SMITH

All you can say for the weather up here at Buffalo Raceway is pew. In fact, I don't see how these poor souls can stand to come out on such nights. But from the hear say, it's long shots.

Our Flashy Fellow was in the daily double that paid \$237. Not bad. But I don't bet at any time. His odds were grand. He was also in a photo to win this past Friday and paid good. Missed one inch.

The barns are all full, and horses are being turned away. Seems this year Micky has plenty of horses ready to race. But it doesn't seem to have the excitement at the start of the season as the past years.

Guess as the newspapers said last year, and I quote. Just called the horses out and started racing without fan fare. Just as though they had been racing all winter.

They do have a nice canopy for the fans that extends almost to fence, and that does help.

I sure see a lot of boys from Harrington up here this year. When it gets better weather I'll see them and get a little home town news from them.

It was so cold, we didn't even watch the big pace this past week. I don't think hardly any of the horsemen did.

The trees, flowers, and falls are beautiful. That is, if they don't freeze. Even the high level bridge over the lake going into Buffalo looks cold.

In another month there will be plenty to do and places to go that will be open besides the races.

Social Security

What evidence do you have in your possession that establishes the date you were born? If your marriage were to be questioned, can you prove you are married. What was your gross salary last year?

These are not "\$64,000 questions." Neither are they "\$250,000 questions." They are simply a few statements you can be required to prove when you file claim for benefits under the Social Security Act. Just as a bit of information, benefits can total more than \$40,000 in some survivor cases before the full liability of the law has been discharged. This explains why the Social Security Administration insists upon proof of certain events that most of us take more or less for granted.

Actually, having such things available as proof of age, proof of marriage, and evidence of wages paid will not only help you to meet the requirements of the social security law, but will speed the day when you will receive your first check. Any delay in obtaining proofs causes a similar delay in receiving your first check. If you want your checks promptly, be equally as prompt in furnishing the required proofs.

Greenwood

Weekend guests at the home of Mr. and Mrs. Horace Maloney were Mr. and Mrs. Howard Barker and daughter, Mary, of Milton.

The sympathy of the community is extended to the family of Mrs. Clarence Lockerman, who passed away last week, after a long illness.

Mrs. Floyd Burris and daughter attended a surprise birthday party in Seaford, for Mrs. Higgins Saturday evening.

Mrs. Joy Hamstead underwent an emergency appendectomy in the Milford Memorial Hospital Friday night.

Mrs. Millard Calhoun and children of Glasgow are spending two weeks with her parents, Mr. and Mrs. Emil Gerardi. Thursday, they were all guests of Mr. and Mrs. Medford Calhoun.

The Rev. Miss Etta M. Clough and Miss Mitchell of Smyrna were visitors at the Medford Calhouns last week. Sunday guests of the Calhouns were Mr. and Mrs. Roy Hill of Cokesbury. The Sunshine Class of Greenwood Methodist Church will hold a strawberry festival and bazaar on the church lawn Saturday.

The festival will begin at 4:30 p.m. Ice cream will be on sale any time after Wednesday and in any quantity.

Warren Hamstead had the misfortune to cut nine tendons in his right hand while he was on the senior class trip to New York City. He has been a patient in St. Clair Hospital, but is expected home Tuesday or Wednesday.

Mr. and Mrs. Byron Wise and daughters motored to Washington Saturday to meet their son, Billy, who arrived there by plane for a two-weeks' leave from Ft. Knox, Ky. He will return to Ft. Knox at the end of his leave. The W.S.C.S. of Grace Church will meet at the home of Mr. and Mrs. Theodore Payne Tuesday evening, at 8 p.m.

Mr. and Mrs. R. O. Mai spent last weekend with their son, Everett and his family at their home in Silver Spring, Md. Sunday morning they attended the Northminister Presbyterian Church in Washington, D. C.

India now has 28 cement factories.

Peru has boosted fish exports.

BEE GEE
 FIND COOKING QUITE A TRYING TASK?
 USE BOTTLED GAS,
 THAT'S ALL WE ASK

Cahall's
 GAS SERVICE CO.
 3642 HARRINGTON, DEL.

NEW FRIGIDAIRE LINT-AWAY Automatic Washer

Cleans the BEST!
 Now it's official. In competitive tests with 6 other leading automatic washers, Frigidaire Washing Action washed clothes 38% cleaner than the average—and cleanest of all, by far! Tests were conducted under identical conditions by one of America's great, independent testing laboratories. See the Lint-Away System in action!

Saves the MOST!
 Saves more hot water and detergent than any other washer—up to 1800 gallons of hot water a year without re-use of dirty wash water. Saves as much as 3/4 cup of detergent per wash load, up to 21 boxes a year. Save clothes—no rubbing, no blades or paddles. Saves filter cleaning—automatically gets rid of lint, dirt, suds. Saves time, electricity, and you.

Liberal Trade-In Allowance Saves You Even More!

as little as **\$3.75** per week

SEE the proof—SAVE the difference!

TAYLOR'S HARDWARE
 Phone 3634 Harrington

Hickman

Mr. and Mrs. James Drummond of Milford were Sunday guests of the former's parents, Mr. and Mrs. Howard Drummond.

Mrs. Norman Breeding, who has been spending two weeks with her step-son and family, Mr. and Mrs. Frank Breeding, has returned to her home.

Mrs. Marshall Andrews and Mrs. Eva O'Day of Greenwood spent Sunday afternoon with Mrs. Margaret Breeding.

Wayne Andrews of Greenwood spent the weekend with Paul O'Day.

Mrs. Sadie Brown is convalescing at the home of her daughter, Mrs. Helen Zimmerman of Seaford.

Mrs. Isaac Noble and Mrs. Floyd Messick spent Wednesday evening with Mr. and Mrs. Robert Messick.

Board of Health Clinics

May 27
 Well Child Conference - Dover Health Unit, 414 S. State St. 1 p.m. Call Dover 5711, ext 10 for appointments.

May 28
 Well Child Conference - Milford (c) Health Unit, Shore Theater Building 1 p.m.

Veneral Disease Clinic - Dover Health Unit, 414 S. State St. 11 a.m.

Switzerlands has a new "co-op" to provide loans for small tourist hotels.

Berry Funeral Homes
 MILFORD-HARRINGTON FELTON
 Phone: MILFORD 5512 Phone: FELTON 4-4548

Aside from satisfactory service, it is desirable that the feeling of understanding and competent direction are also present.

Armed Forces

Pvt. Robert H. Pancoast, son of Mrs. Marion Weher, 210 Thompson, New York City, was graduated May 17 from the eight-week teletype operation course at the Army's Southeastern Signal School, Fort Gordon, Ga.

He entered the Army in January 1957 and was last stationed at Fort Dix, N. J.

Pancoast, son of Henry S. Pancoast, 442 Kings Highway, Dover, is a 1955 graduate of Goddard High School, Plainfield, Va.

Marine Pfc. Robert L. Moore, son of Mr. and Mrs. Lester Moore, Harrington, graduated April 10 from the Radio Telegraph Operators Course of the 2nd Division Communication School at Camp Lejeune, N. C.

The course included coded messages, touch typing, international Morse code, and radio procedure.

Army Pvt. Raymond T. Harvey, 22, son of Mr. and Mrs. William Harvey, Harrington, is scheduled to complete eight weeks of basic combat training May '18 at Fort Knox, Ky., under the Reserve Forces Act program.

Men volunteering for the six month tour of active military training are permitted to finish their military service in a local Army Reserve or National Guard unit.

Harvey is a 1951 graduate of Harrington High School.

Peru has opened the Chimote steel mill—its real—Lima learns.

SHIRTS (5 or more) 18c
 SUITS (Dry Cleaned) \$1.10

SATISFACTION GUARANTEED

Charlie Louie Laundry & Dry Cleaning
 Clark St. Harrington, Del.

CAR-TUNES

AUTO REPAIRS

Did My Wife Come In Here For A Brake Job ???

The moral is plain: Stop here for a brake job while you can STILL stop. "Later" may be TOO late... so do it now! We'll check your brakes and put them in shape for SAFE driving.

Intersection Service Station
 Phone 3700 Harrington, Del.

BLUE SUNOCO

NEW Super Premium 240

for highest compression cars

STOP AT THE PUMP WITH THE YELLOW TOP

FAMOUS BLUE SUNOCO 200 STILL Premium Quality STILL at Regular Price

FOR HIGHEST COMPRESSION CARS

COX DISTRIBUTING COMPANY
 MILFORD, DELAWARE

THE CURTAIN RISES ON A NEW ERA OF INDUSTRIAL PROGRESS IN DELAWARE

MAY 23... the official opening of Tidewater's giant new Delaware Refinery.

This is news of significance... for Delaware's first oil refinery is the world's most modern, the largest ever built all-new from the ground up. Delaware's new industrial showpiece is so far ahead that it is actually the first in a new generation of petroleum plants... opening up the era of the 150's and 160's. This is the only refinery capable of making its entire gasoline output 100 octane plus.

Many millions of dollars... millions of man-hours of work have been expended in the area to make this vision a reality. A substantial part of this vast effort was devoted to making the refinery a desirable neighbor. Literally millions of dollars have been spent to prevent air and water pollution ... to preserve natural resources and wildlife. Most of the 5,000-acre site has been retained as farmland.

Tidewater's new Delaware Refinery is now part of the industrial life of the area. It will be contributing its share to the well-being and economic growth and stability of Delaware for many years to come.



Although everyone couldn't be invited to the Dedication Ceremonies, we'll be proud to arrange for groups to visit the new Refinery in the months ahead if you will give us a call or drop us a note.

TIDEWATER OIL COMPANY

WANT ADS - CLASSIFIED - and LEGALS

RATE SCHEDULE

All ads in this column must be paid for in advance. This is the only way in which orders will be accepted for want ads. No ad order accepted for less than 75 cents. If you have an ad which you want inserted, count the words (name and address included), and multiply by the number of times you want the ad to run. Send that amount with the advertisement.

FOR SALE

WALLPAPER Largest Selection on the Eastern Shore Milford Wallpaper & Paint Co. Phone Milford 8317

ROOFING SIDING

15 YEARS EXPERIENCE Call us for our prices YOU WILL BE PLEASED NO DOWN PAYMENT MONDAY TO FRIDAY SALISBURY ROOFING CO. 200 South Division Street P. O. Box 386 Salisbury, Md. Phone: Pioneer 2-1502

NOTICE

Will the person who took the potter's flower off the grave of my mother, Laura Rose, put it back in the same spot. It was taken 1 hour after I put it on for Mother's Day. Viola Jacobs 11 5-24

ADVERTISEMENTS FOR BIDS

Sealed proposals will be received by the State Highway Department of the State of Delaware at its office (Room 207) in the Highway Administration Building, Dover, Delaware, until 2:00 P.M. E.D.S.T., May 23, 1957, and thereafter until 10:00 A.M. E.D.S.T. on the following approximate quantities:

CONTRACT NO. KE-76 2 - 2 Door Seals Attention is called to the General Contract Provisions, the specifications and the Contract Agreement attached to the proposal. The contract will be awarded or rejected within 30 days from the date of opening the proposals. Bidders must submit proposals upon complete forms as provided by the Department for bidding purposes. The envelope containing the proposal must be marked "Proposal No. KE-76." Each proposal must be submitted in a separate envelope.

APPLICATION FOR LICENSE

I, Drexel Cox, intend to make application for a license to sell alcoholic liquor in a package store for consumption off the premises, located just south of Wyoming and Camden town limits on Route 10, (His property). 3t b 6-7 exp.

NOTICE

In pursuance of an order of Clarence E. Dixon, Register of Wills, in and for Kent County, Delaware, dated May 18th A.D. 1957 notice is hereby given of the granting Letters Testamentary on the estate of Mary R. Russell on the 18th day of May A.D. 1957. All persons having claims against the said Mary R. Russell are required to exhibit the same to such Executor within nine months after the date of the granting of such Letters, or abide by the law in that behalf, which provides that such claims against the said estate not so exhibited shall be forever barred.

NOTICE

Experienced Waitress wanted—Apply Dot's Restaurant or call 8387. 1t b 5-24 exp.

APPLICATION FOR LICENSE Capital Distributing Co. intends to make application to the Delaware Alcoholic Beverage Control Commission for a license to sell alcoholic beverages off the premises in a building located on South Gov's Ave., Route 13-A 1 mile south of Dover, Del. 3t b 5-21 exp.

WANTED

Wanted to buy—One, two, or three work tables. Journal, phone Harrington 8209. 1t

Wanted to Buy—Soybeans 1 up to 500 bushels. Phil Gardner, Rambler & Tractor Dealer, Mullica Hill, N. J., GRidley 8-6291. 3t 5-21

NOTICES

ADVERTISEMENTS FOR BIDS Bids will be received in the City Offices of the City of Harrington, Del., until as of the close of business on Friday, May 24, 1957, for the construction of approximately eight hundred and sixty (860) L.F. of 8" sewer main. Specifications may be obtained from City Office. All bids to be submitted on a per foot basis.

APPLICATION FOR LICENSE I, Roger Knowles, intend to make application for a license to sell alcoholic beverages for consumption off the premises in a tap room trading as the Melody Club 2 1/2 miles north of Dover on route 13. 3t b 5-24

FLOOR COVERING Headquarters for ARMSTRONG and GOLD SEAL WALL FIX PAINTS MILFORD WALLPAPER CO. Phone Milford 8317

Sewing Machine Repairs All makes and models except oriental makes. Prompt and efficient guaranteed service. Singer Sewing Center, 108 N. Front St., Milford, Phone 8435.

WE HAVE REPAIR PARTS for all models Maytag washers. Cahall's Gas Service Company. 1t 2-11

Will watch children in my home. Have big fenced in yard. Mrs. Shirley Fommell, Felton 4-4355. 2t b 5-24 exp.

NOTICES

ADVERTISEMENTS FOR BIDS

Sealed proposals will be received by the State Highway Department of the State of Delaware at its office (Room 208) in the Highway Administration Building, Dover, Delaware, until 2:00 P.M. E.D.S.T., May 23, 1957, and thereafter until 10:00 A.M. E.D.S.T. on the following approximate quantities:

CONTRACT 1435 F. A. Freeding 434 (2) PENWICK ISLAND BRIDGE & APPROACHES Successor to 0.534 Mile Prestressed Concrete Slab Bridge & Hot Mix Asphalt Concrete Approaches

L. S. Clearing & Grubbing 1,000 C. Y. Excavation 10 C. Y. Excavation for Structures

22,000 C. Y. Borrow 230 L. F. Borrow Pit Stripping 13,000 C. Y. Select Borrow 3,000 Tons Waterbound Macadam

1,800 Tons Hot Mix Asphalt Concrete RC-1 Asphalt RC-3 Asphalt 1,500 Gal. RC-3 Asphalt

45 Tons Slag Chips 340 C. Y. Portland Cement Concrete Masonry (Sub-structure only) 100 S. Y. Superficial Water-proofing

33,000 Lbs. Bar Reinforcement (Substructure only) 144 L. F. 12" R. C. Pipe 130 L. F. 15" R. C. Pipe 200 L. F. Steel Shell Test Piles

2,000 L. F. Cast-in-place Concrete Piles (14" Diameter) 3,700 L. F. Cast-in-place Concrete Piles (18" Diameter)

1,300 L. F. Wood Shoulder Curb 125 L. F. 3" C. M. Downposts 1,300 L. F. Wire Rope Guard Fence (Wood Post)

12 Each End Post Attachments 450 S. Y. Mulching 8 Tons Sand 500 L. F. Ditching 5 Tons Calcium Chloride (Dust Control)

300 S. Y. Riprap 2,000 Gal. RC-1 Asphalt Tack Coat L. S. Muck Excavation

880 L. F. Aluminum Railing L. S. Scaffolding L. S. Removal of Existing Bridge

L. S. Maintenance of Traffic CONTRACT 1508 ROAD NOS. 367, 366, 380, 385, 372, 228, 246, 386 Kent County

Grading & Compacting Roadway 118H172 14,000 L. S. Clearing & Grubbing 200 C. Y. Borrow Pit Stripping

10,000 C. Y. Select Borrow 2,200 L. F. 15" R. C. Pipe 2,000 L. F. 18" R. C. Pipe 1,000 L. F. 24" R. C. Pipe

250 L. F. 30" R. C. Pipe 280 L. F. 36" R. C. Pipe 220 L. F. 42" R. C. Pipe 20 L. F. 48" R. C. Pipe

1 Each Type "B" Catch Basin 14,000 Lbs. Castings 5,000 L. F. Ditching 70 S. Y. Riprap

27 Each Drainage Wells L. S. Removal of Bridges 18.78 Miles Grading & Reshaping Roadway

CONTRACT 1508A ROAD NOS. 367, 366, 380, 385, 372, 228, 246, 386 Kent County

20' Surface Treated Roadway 18.78 Miles 118H172 62,000 Gal. MC-O Asphalt 270,000 Gal. CBRC-3 Asphalt

138,000 Gal. RC-3 Asphalt 5,000 Tons Slag (50% max) 5,400 Tons Crushed Chips 18.78 Miles Stabilizing & Compacting Roadway

Attention is called to the Special Provisions in the proposals, the specifications and the Contract Agreement. The provisions of the Federal Aid Highway Act as amended are applicable to Federal Aid Projects.

The employment agency for the contracts shall be the Delaware State Employment Service whose offices are located at 601 Shipley Street, Wilmington, 155 S. Bradford Street, Dover, and North Race Street, Georgetown.

Performance of contract shall commence within ten (10) days after execution of the contract and be completed as specified. Monthly payments will be made for ninety (90) percent of the construction completed each month.

Bidders must submit proposals upon complete forms as provided by the Department for bidding purposes. Each proposal must be accompanied by a surety bond, certified check, or money to the amount of at least ten (10) percent of the total amount of the proposal.

The envelope containing the proposal must be marked "Proposal for the construction of State Highway Contract No. 1508A." The contract will be awarded or rejected within twenty (20) days from the date of opening proposals. The right is reserved to reject any or all bids.

Prospective bidders who have submitted to the Department thirty (30) days prior to the opening of the proposals the completed forms "Contractor's Financial Statement" and "Experience Questionnaire" and who have been prequalified twenty (20) days before the receipt of the bid, may obtain one set of contract documents from the Highway Department Office, 158 S. Bradford Street, Dover, Delaware, upon the payment of five dollars (\$5.00). Contract documents need not be returned and the above payment will not be refunded.

Make checks payable to the Delaware State Highway Department. DELAWARE STATE HIGHWAY DEPARTMENT By: J. Gordon Smith, Chairman R. A. Haber, Chief Engineer May 8, 1957 Dover, Delaware 2t b 5-24 exp.

Don't Scratch That Itch! In Just 15 Minutes. Your 40c back at any drug store if not pleased. Easy-to-apply ITCHE-NEOT doesn't itch in MINUTES! Kills germs on CONTACT. Fine for eczema, ringworm, insect bites, foot itch and other surface itches. Guaranteed locally by T. E. Clendening Drug

Phone 8051 Harrington, Del. FOR TERMITE CONTROL All Work Guaranteed Free Estimates - Call - RAYMOND DEAN Harrington 3539

NOTICES

In pursuance of an order of Clarence E. Dixon, Register of Wills, in and for Kent County, Delaware, dated May 15th A.D. 1957 notice is hereby given of the granting Letters Testamentary on the estate of Laura Wadkins on the 15th day of May A.D. 1957. All persons having claims against the said Laura Wadkins are required to exhibit the same to such Executors within nine months after the date of the granting of such Letters, or abide by the law in that behalf, which provides that such claims against the said estate not so exhibited shall be forever barred.

By: Wallace F. McFaul Trust Officer Executors of Laura Wadkins, deceased. Clarence E. Dixon Register of Wills 3t 6-7 exp.

LOST

Lost in or near post office—set of Keys on a ring. If found please call Harrington 8806. 1t 5-24

St. Stephen's Episcopal Church

Sunday afternoon a number of representatives from St. Stephen's Church School took part in the 1957 diocesan presentation service of the children's Lenten missionary offering at the Cathedral Church of St. John, Wilmington. Children's choirs from many missions and parishes throughout the state took part in the colorful procession as well as two official delegates and a banner bearer from each church.

After the appropriate missions hymns were sung, the congregation of children and their sponsors repeated Psalm 67, the Apostles Creed, and the Lord's Prayer. The program included a demonstration Sunday School class as taught in Haiti, with the worship part of the class in French, then repeated in English, under the direction of Mrs. Donald O. Wilson, and her group of boys and girls from St. Matthews. The Rt. Rev. J. Brooke Mosley spoke briefly to the assembled youth people.

As the name of each parish or mission was called, the two delegates came forward and placed the mite box offering in the large Lenten offering box set up near the altar. Viva Reed and William Thompson made the presentation for St. Stephen's. Kenneth Correll carried our church school banner. Mrs. Robert McNally took one group of children to Wilmington and George A. Thompson, another group. The following youth people attended the service, the largest representation St. Stephen's has had at this annual presentation: Gail Keim, Carol McNally, William McColley, Viva Reed, Wayne Porter, Albert Lee Ratledge, Ronny Porter, Kenneth Correll, William Thompson. Mrs. Lillian Rice, teacher in our beginners' department also accompanied the group.

The special project of our church school this year will be the construction of a school in Haiti. In past years Delaware Episcopal youth have purchased a sound projector for Alaska, a jeep for Brazil, and a dishwasher for Camp Arrowhead. They are joining with other youth groups in giving toward the construction of a school building at Holy Innocent's Church in Port-de-Paix, Haiti. Classes now have to meet in a house, with over 100 students crowded together.

Ronnie Correll attended a meeting of the Kent County Youth Convocation at Smyrna, Sunday afternoon. Since it was the last meeting before the summer recess, a picnic at Lake Como had been planned. Because of the weather, the picnic was moved to St. Peter's Parish House where the young people reported having a wonderful time.

Mrs. Walter Winkler was hostess at coffee hour Sunday. St. Stephen's members are happy to have six new folding banquet tables with masonite tops and wishbone legs, each having a seating capacity of ten. The tables are a gift from the diocese of Delaware.

For the first time at coffee hour Sunday, the members of St. Stephen's could enjoy meeting all together in the Parish House, in one large reception room or dining room instead of two smaller rooms. The change was made possible by the skilled work of Edward C. Brown Sr., and Gilbert H. Keim in removing a partition between the two downstairs rooms that adjoin the kitchen. It will make a great improvement in all the church activities held in the Parish House.

Delaware Food Market Report

Beef prices continue to rise, in spite of the fact that beef is listed on the official U. S. Department of Agriculture plentiful foods list right now. The rise has been steady, going up a penny or so each week. Most-wanted steaks and roasts are up 1 to 5 cents a pound. Round steak shows the biggest increases, however. So, looking carefully at the beef featured for weekend specials will be the best way to buy beef this week if you are concerned about your food budget.

Pork and lamb are following beef on the price escalator. Both grades of bacon are lighter, center cut pork chops are up as well as pork roast. The biggest price jump on lamb was made by rib chops, now selling around \$1.18 a pound. Veal is one meat that can't decide where it's prices belong. It's up and it's down. Right now veal is in season and should be in its low-price period. So when you go shopping be sure to look at the different cuts of veal-veal roast, veal cutlets are both expected to be good buys.

Strawberries continue to make news this week. Local berries are beginning to ripen and will help make the present supply even larger. Quality is not as good as it might be so do look carefully as you buy berries this week. If you have a freezer now is the time to think of freezing extra strawberries for future use. Don't forget that strawberry jam is easy to make and certainly adds to any meal when it is served, so, look over your preserving equipment and get ready to make some jam, preserves or jelly for your family. The peak of supply has not reached this area as yet but with a few hot days it will be here. A bumper crop of frozen strawberries added to supplies of fresh berries sent in from Virginia, North Carolina, California and Maryland make strawberries the fruit to watch for real bargains.

All of the vegetables look better this week with good buys on the following vegetables: lettuce, as low as two heads for 19c in some stores; asparagus (an excellent buy now); potatoes; spinach and most greens of this type; and radishes. Tomatoes still remain high in price and for the most part only fair in quality.

Nazarene Church Notes

The Harrington Church has just closed their conference year with the best report yet under their present pastor, Rev. Lorraine Ottinger.

During the past year all of the church obligations have been paid in full. Over half of the church indebtedness has been met, and the church plans to enlarge its activities in the future.

The Sunday School has grown three times its membership of 1955 with a steady growing gain as yet. The officers of this department for the new year are: Ben Dean, superintendent; Fred Gustafson, assistant superintendent; Paul Gustafson, secretary; Mary Lord, treasurer.

Members of the Church School Board are Mrs. Mae Meredith, Miss Janet Smith, and Albert Ottinger.

The youth work of the church has extended beyond its local interests as far as Wilmington, Claymont, Virginia, Texas, and Germany. Mr. and Mrs. Franklin Pinkerton are serving as teacher and nurse in Frankfurt, Germany. The new officers of this society are: Faith Gustafson, president; Janet Smith, vice-president; Joanna Ottinger, secretary; Paul Gustafson, treasurer.

The missionary work has advanced steadily. Besides the local work, two officials boxes were sent to the foreign fields, plus over three hundred dollars paid for salaries of missionaries. The following will serve in the new year: Mrs. Charles Day, president; Mrs. Oliver Smith, vice-president; Janet Smith, secretary; Ben Dean, treasurer; Fred Gustafson, superintendent; Mrs. Mae Meredith, other sheep secretary.

The trustees elected are Charles Day, Joseph Crisp, and Fred Gustafson.

The stewards elected are Mrs. Ben Dean, Mrs. Charles Day and Mrs. Oliver Smith.

The following children were baptised during the year: Billy Harvey Slater, son of Mr. and Mrs. George Slater; Sara Ann, Gladys Anita, Barbara Jean,

type; and radishes. Tomatoes still remain high in price and for the most part only fair in quality.

children of Mr. and Mrs. Joseph Kling; Ina Marie, Franklin Dollis, children of Mr. and Mrs. Franklin Slater; Rose Lee, Myrtle Ellen, Children of Mr. and Mrs. Howard Rust.

The services for the following week are: N.Y.P.S. business meeting tonight at the home of Miss Faith Gustafson at 7:30. Sunday School, 9:45 a.m. Morning worship 11 a.m. N.Y.P.S. 7 p.m., Paul Gustafson will have charge of this service. Evangelistic service 7:30 p.m.

We are glad to welcome Rev. Mrs. Lorraine Ottinger back to serve the local church again for another year.

W.S.C.S. Notes

New officers of the W.S.C.S. of Trinity Methodist Church will be installed at a dinner meeting at the Star-of-the-Sea in Rehoboth Tuesday evening, June 4. Mrs. Louis Dennis, a returned missionary from Borneo, will be a guest of the Society at dinner, and will talk to the group of her work with the people of that country.

Officers to be installed by Mrs. Granville Tyndall, president of Dover District W.S.C.S. are: Mrs. Frank O'Neal Jr., president; Mrs. John Walls, vicepresident; Mrs. William Shaw, recording secretary; Mrs. Ernest Raughley, treasurer.

Elected department secretaries are: Mrs. Tharpe Harrington, promotion; Mrs. Chester Wilcox, spiritual life; Mrs. Oscar Nemesh, Christian social relations; Mrs. Harry Adkins, local church activities; Mrs. Sam Williams, missionary education; Mrs. William Smith, student work; Mrs. Evelyn McKenzie, youth work; Mrs. Arnold Gilstad, children's work; Mrs. Wilbur Jacobs, literature and publications; Mrs. Brinton Holloway, status of women; Mrs. Lewis Clymer, supply work.

Reservations for the dinner are to be made with Mrs. Ernest Raughley before, May 31.

Shares of the Norfolk Island & Byron Bay Whaling Co., Ltd., which recently finished its first successful season on Norfolk Island, in the South Pacific, now are being sold on the Sydney Stock Exchange.

Eire now permits the import of Salk anti-poli-vaccine.

DELAWARE PARK Opens Wednesday, May 29 THE WILMINGTON HANDICAP POST TIME 2:00 P.M. • DAILY DOUBLE CLOSES 1:45 P.M. Regular Parking—25c Valet Parking—50c additional Available through all entrances FASHION SHOW AT 12:30 NOON by JOHN WANAMAKER (Wilmington) From special fashion stage in front of the grandstand • Miss Delaware 1957 and Delaware's Miss Cherry Blossom Princess will be among the models SUNDAY, MAY 26 • VISITORS' DAY Drive in and look around • Everyone is welcome See a thrilling race every day on TV—Channel 12 • 5:00 to 5:30 PM THE DELAWARE STEEPLECHASE AND RACE ASSOCIATION DONALD P. ROSS, Pres. BRYAN FIELD, Vice-Pres. and Gen. Mgr. LEWIS S. MUNSON, Jr., Treas. B. H. WOOD, Sec. and Ass't Treas.

4-H Club Notes

4-H'ERS VIE FOR HONORS

The annual 4-H Talent and Public Speaking Contest was held last week at the Capital Grange Hall, in Dover, with fourteen members participating. This event, sponsored by the County Order of Links, is held each year to select the county winners to participate in the State Contest which will be held during 4-H Short Course.

Sharon Johnson, Houston Cardinal 4-H'er with her beautiful rendition of "Che Sara" placed first in the talent event. In second and third place Fred Wiebel, White Oaks club member playing two Polkas on his accordion and Linda Conrad, Oak Grove Blue Hen member, playing the "Hawaiian Love Song" on the piano will all compete at Short Course.

Nancy Thistlewood from the Houston Cardinals and Fred Gramp from the Oak Grove Blue Hens will represent the county in the Boys and Girls division of the Public Speaking Contest.

Others participating in the talent contest were Thelma Thomas, White Oaks Club, piano solo; and Helen Gramp, Darlene Crockett and Jo Ann Haines of the Oak Grove Blue Hens presenting a clever musical comedy act. In the public speaking contest Richard Simpson of the Houston Cardinals spoke about the 4-H pledge while Helen Gramp talked about the importance of friendship. Both of these 4-H'ers were in the senior speech division.

Susan Benson, of the Houston Cardinals Jr. Club, took first place honors in the Junior Girls Speech Division by telling about her dairy project.

The judges for the evening were Mrs. George Vapaa and Mr. Jerry Eton from a radio station.

4-H Girls Preparing For Annual Dress Revue

4-H girls in Kent County are cutting, fitting and sewing outfits they hope will be in the spotlight at local, county, and state 4-H dress revues this summer, Marion MacDonald, county 4-H agent, has announced.

Their final goal is to model the clothes in the national dress revue at the 4-H Club Congress in Chicago next December.

The 4-H dress revue program, directed by Wayne Bath, acting state 4-H club leader, is designed to teach 4-H girls how to select styles, colors, and fabrics suited to their individual personalities and wardrobe needs. Poise, self-confidence, and good grooming habits also are developed along with leadership qualities and learning to work with others.

Merit awards will be supplied for the 11th consecutive year by the Simplicity Pattern Company, the agent said. The state winner will receive an all-expense trip to the Chicago Club Congress, and a special gift of a leather encased scissors set. Blue award county winners will get medals of honor.

The agent invites girls between 10 and 21 to enroll in the dress revue held June 28 during 4-H short course at the University of Delaware. Detailed information may be obtained from local 4-H club leaders or at the county extension office.

4-H Agent Asks Short Course Enrollment; Lists Sessions

Four-H'ers in Kent County have been invited to enroll in the state-wide 4-H short course June 26 to 29 at the University of Delaware.

When making the announcement, Marion MacDonald county 4-H agent, said project classes will be held in foods, clothing, home improvement, entomology, electricity, crops and soils livestock, farm machinery, farm management, poultry production, and dairying. Classes also will be speaking, 4-H newspaper publishing, 4-H newspaper publishing, photography, modeling, and ballroom dancing. One class will develop a new 4-H song book.

Pointing out highlights of instruction this year, the agent said marketing and freezing will be emphasized in the foods course, with a possible visit to a grocery store to observe marketing methods. Highlight in clothing will be class on man made fibers, such as nylon, rayon, and dacron, to teach 4-H'ers sewing and care. A shopping trip will be taken to teach proper selection of styles, colors and patterns.

The emphasis in home improvement will be on the development of new project units for use in club work. New insecticides will be emphasized in entomology, and classes in electricity will take a tour of the new Delaware City power station. Crops and

soils students will visit the soil testing laboratory at the University of Delaware. Clubbers in livestock classes will learn about swine and sheep production.

New machinery, its operation and adjustment will be discussed in farm machinery classes. Far management classes will take the farm and home unit approach. Marketing, diseases, and judging will be highlights of poultry classes. Work in dairying will include the selection of animals, with emphasis on Brown Swiss. There will be a possible visit to a milk plant to observe operations.

4-H'ers wishing to enter the course should contact the agent at the county office for enrollment cards that are due by June 17.

Farmers Urged To Avoid Poisonous Silo Gas

Farmers at silo filling time should avoid poisonous nitrogen dioxide fumes that may form in fresh silage.

That's the advice of George Vapaa, county agricultural agent, who says the gas causes "silo-filler's disease," a recently discovered hazard to humans and livestock.

The gas seems to develop most readily in corn silage grown in hot, dry years, the agent said. Symptoms of the disease are severe coughing, and burning or choking pains in the throat and chest. After awhile the pains disappear, leaving the exposed person free of discomfort five to twelve hours. But then severe illness can strike, due to lung irritation caused by the gas. The disease may attack just as a person enters a partly filled silo, or while filling is in progress.

When the symptoms are discovered, a physician should be called immediately. The disease can be fatal. Vapaa recommends these safety precautions when filling all tower silos:

1. Run the blower 10 minutes before going into a partly filled silo. Always keep the blower running while you are inside.
2. Be alert to irritating odors. Nitrogen dioxide is heavier than air and collects near the surface of the silage. The gas tends to settle in the silo chute and around the base of the silo.
3. Watch for yellowish brown fumes—they are a sign of the gas. If it is dark, use a flashlight so you can see.
4. Keep children and animals out of the silo and away from it during filling.
5. After the silo is filled, wait at least a week before going inside. Don't let the children or farm animals stay near the silo. If necessary, use a temporary fence to keep them away.

German labor wants shorter hours.

Carroll Morris Recommends Sudan

"Sudan grass is a real milk maker in the summer," says Carroll Morris of Clayton, says Pet Dairy Chats. Morris has been growing Sudan for many years, and his is of the opinion that almost every dairy farm in this area should have Sudan grass for summer pasture.

Morris usually grows between eight and 15 acres of Sudan. Last year he sowed four different plots, and by rotating his herd from one plot to another he felt he was able to get better grazing. "I generally seed about 30 pounds of seed per acre," remarked Morris. "By sowing the seed thick, the Sudan has fine stems and makes better pasture." He has grown both the sweet and the Piper varieties; his opinion is that the Piper variety will do better in very dry weather, and that the sweet Sudan is a better milk maker.

Sudan grass can be planted from May 15 to July 1. It is strongly recommended that one-half the field be seeded about 10 days later than the first half to facilitate alternate grazing.

General fertilizer recommendations are 400 pounds per acre of 5-10-5 at planting time. A top-dressing of 20 to 30 pounds of nitrogen per acre may be applied following the first grazing cycle. Sudan should not be grazed until it is at least 12 inches tall, and never after a killing frost because of the danger of prussic acid poisoning.

The Morris farm is located approximately three miles north of Clayton. Mr. and Mrs. Morris are both very interested in their dairy herd. The milk from their farm is shipped to the Pet Milk Company's plant at Dover.

Ornamental Gardeners Might Like Plant Stimulator

If you're the adventurous sort of ornamental gardener, maybe you'll enjoy experimenting with a plant growth stimulator now on the market, says George Vapaa, county agricultural agent. The stimulator is gibberellic acid, sold as a powder or liquid under about six different trade names.

The acid can stimulate both growth and length in many plants. Experiments have shown it to be particularly effective for speeding the growth of young trees and slow-growing ornamentals—and for increasing the size and flowering of many annual and perennial plants. Many house plants are fairly easy to experiment with, and they respond to the acid.

Vapaa says the material is usually applied as a spray. Commercial products containing gibberellic acid will have directions for mixing and application. Scientists with the U. S. Department of Agriculture stress that use of the acid is still highly experimental. They emphasize that its effect on individual plants cannot be accurately predicted. Some plants are more sensitive to the acid and respond more quickly to the acid.

Survey Reveals 54 Bulk Milk Tanks On Del. Farms

A state-wide survey has revealed 54 bulk milk tanks on Delaware farms.

According to the survey by Delmar J. Young, extension dairyman at the University of Delaware, 34 of the tanks are in New Castle County, six in Kent County, and 14 in Sussex County.

Three tanks are located on farms equipped with milking parlors. The operators are F. Paul Butler, Townsend; Timothy Schlabeck, Greenwood; and James Ewart, Hockessin. Schlabeck also has the first vacuum bulk cooling tank installed in the state.

Five tanks are installed in conjunction with pipeline milkers. Dairymen using the pipelines are R. M. Carpenter Jr., Montchanin; Woodrow Haas, Wyoming; Schlabeck, Butler, and Ewart.

The first bulk milk tanks in Delaware were installed in 1952 on the farms of William Morrison of Stanton, and Edward C. Wilson, Newark.

1956 Farm Fire Loss \$145,000,000

Fire cost the nation's farmers about \$145,000,000 last year—some what under the all-time high of 1955.

According to the U.S. Department of Agriculture, the 1956 loss was equaled by only two other years. Last year's fire toll on farms was the same as for 1951 and 1952, making it a three-way tie for the second highest loss year on record.

Almost a billion-and-a-half dollars worth of farm property has gone up in flames the past ten years, department economists said. Farm fire loss during the past decade reached its peak in 1955, when it rose to \$148,000,000. The lowest loss figure during the period was \$125,000,000 in 1947. As late as 1940, annual farm fire loss was as low as \$64,000,000.

The figures represent fire and lightning losses on buildings, implements and machinery, livestock, crops, and household goods. Fires on farms are due to seven principle causes. These are faulty flues and heaters, combustible roofs, spontaneous combustion, matches and smoking, defective wiring, gasoline and kerosene, and lightning.

Farm fires each year take the lives of some 3,500 rural residents and injure another 300,000.

Fire cost the nation's farmers about \$145,000,000 last year—some what under the all-time high of 1955.

According to the U.S. Department of Agriculture, the 1956 loss was equaled by only two other years. Last year's fire toll on farms was the same as for 1951 and 1952, making it a three-way tie for the second highest loss year on record.

Almost a billion-and-a-half dollars worth of farm property has gone up in flames the past ten years, department economists said. Farm fire loss during the past decade reached its peak in 1955, when it rose to \$148,000,000. The lowest loss figure during the period was \$125,000,000 in 1947. As late as 1940, annual farm fire loss was as low as \$64,000,000.

The figures represent fire and lightning losses on buildings, implements and machinery, livestock, crops, and household goods. Fires on farms are due to seven principle causes. These are faulty flues and heaters, combustible roofs, spontaneous combustion, matches and smoking, defective wiring, gasoline and kerosene, and lightning.

Farm fires each year take the lives of some 3,500 rural residents and injure another 300,000.

Fire cost the nation's farmers about \$145,000,000 last year—some what under the all-time high of 1955.

According to the U.S. Department of Agriculture, the 1956 loss was equaled by only two other years. Last year's fire toll on farms was the same as for 1951 and 1952, making it a three-way tie for the second highest loss year on record.

Almost a billion-and-a-half dollars worth of farm property has gone up in flames the past ten years, department economists said. Farm fire loss during the past decade reached its peak in 1955, when it rose to \$148,000,000. The lowest loss figure during the period was \$125,000,000 in 1947. As late as 1940, annual farm fire loss was as low as \$64,000,000.

The figures represent fire and lightning losses on buildings, implements and machinery, livestock, crops, and household goods. Fires on farms are due to seven principle causes. These are faulty flues and heaters, combustible roofs, spontaneous combustion, matches and smoking, defective wiring, gasoline and kerosene, and lightning.

Farm fires each year take the lives of some 3,500 rural residents and injure another 300,000.

Fire cost the nation's farmers about \$145,000,000 last year—some what under the all-time high of 1955.

BIRTHS

- Milford Memorial Hospital
- May 10
Mr. and Mrs. David Warren, Milford, boy, col
- Mr. and Mrs. Alvin Thompson, Harrington, boy
- May 11
Mr. and Mrs. Harrison Joseph, Georgetown, girl

- May 12
Mr. and Mrs. Earl Mitchell, Georgetown, boy
- May 13
Mr. and Mrs. George Weidon, Laurel, girl
- Mr. and Mrs. Veron Finney, Lincoln, girl, col
- Mr. and Mrs. George Dixon, Bridgeville, boy col
- May 14
Mr. and Mrs. Carlton Brown, Seaford, girl, col
- Mr. and Mrs. Mabry Murphy,

- Bridgeville, girl
- Mr. and Mrs. David Emory, Milford, boy
- Mr. and Mrs. Lewis Harrington, Milford, girl
- May 15
Mr. and Mrs. Robert Cordrey, Bridgeville, girl
- Mr. and Mrs. David Dimes, Bridgeville, boy
- Mr. and Mrs. William Eisenbrey, Milford.

New oil drilling is being expedited in Colombia, Bogota reports.

HD Scholarship Recipient Named

Miss Rose Marie Pflumm, Wyoming, will receive the Kent County Home Demonstration Scholarship this September, according to an announcement made by Mrs. Francis Raughley, Dover, president of the Kent County Home Demonstration Council. Miss Pflumm will enter the School of Home Economics at the University of Delaware at that time.

A senior at Caesar Rodney High School, Miss Pflumm, is the daughter of Mrs. Hilda Nelson. She was recently elected to the National Honor Society. Her other interests and activities in high school include the Future Teachers of America, the Future Homemakers of America, the Crisp Staff, and the Library Workers Club. She is a member of the Westville 4-H Club and the Methodist Youth Fellowship of the Wyoming Methodist Church.

This scholarship is given by the Kent County Home Demonstration Council to a girl from Kent County who is enrolled in the School of Home Economics at the University of Delaware. It is renewable for the recipient's second year at college; a loan without interest is available for her last two years.

Miss Charlott Ludlow, Felton, has been chosen as the alternate recipient for the scholarship.

NOW IS THE TIME TO PAINT YOUR HOME

- For Easy Brushing
- Good Solid Covering
- Wonderful High Gloss
- Stubbom Weather Resistant
- Long-lasting Colors or White

Just ask for MOORE'S HOUSE PAINT \$5.95 per gal.

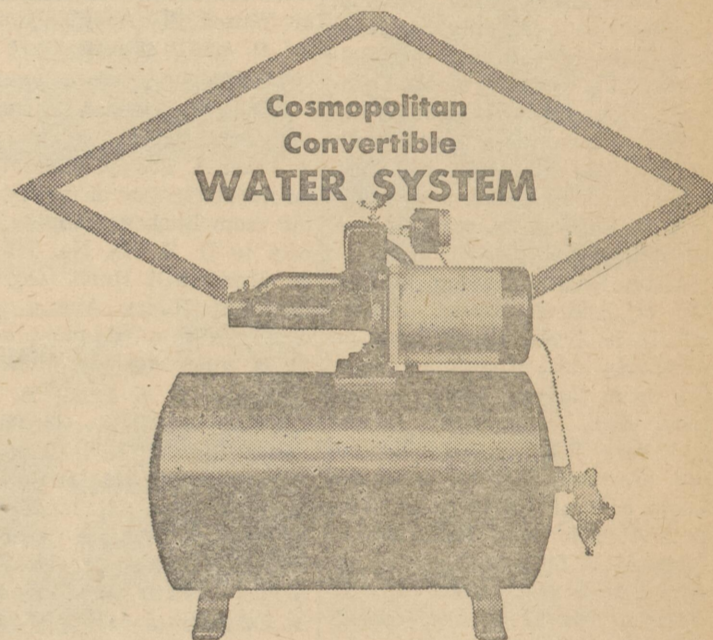


Benjamin Moore paints

Taylor's Hardware

Phone 3634

Harrington, Del.



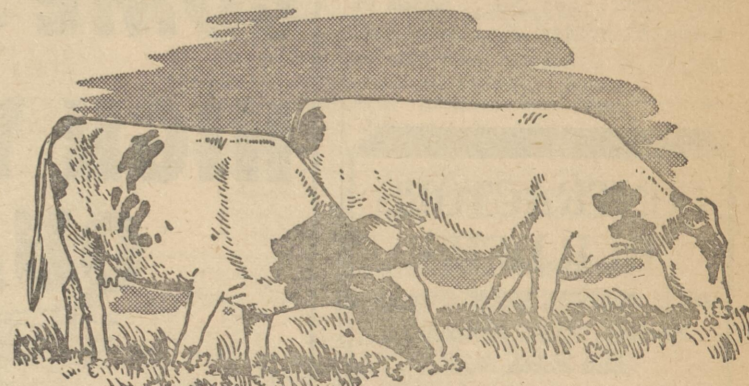
Complete with 17-gal. tank, foot valve, jet, pressure gauge. Pumps up to 830 gals. per hour. Easy to install. 1/2 h.p. motor.

REGULAR PRICE\$164.68

SALE PRICE \$114.50

Put a Plus in Pasture Profits

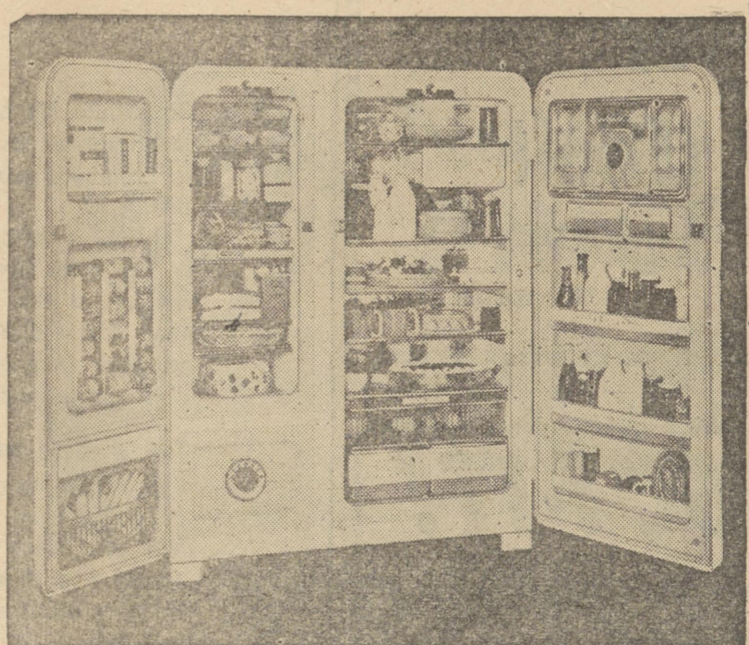
with SOUTHERN STATES 16% PASTURE DAIRY



You make more milk, more money from cows on pasture when you feed Southern States 16% Pasture Dairy regularly. Over 1400 lbs. TDN per ton, 16% protein, 3% fat. And it's so economical — truly your best dairy feed buy. Order a good supply today.

Introducing... FOODARAMA--- LEONARD COMBINATION REFRIGERATOR-FREEZER

World's Finest Food Keeper



15.9 CU. FT. \$634.95 EASY TERMS

Choice of 8 lovely colors available on order—\$20.00 extra Here it is—Foodarama—a home freezer and huge automatic defrosting refrigerator in a single cabinet! Open the left-hand door . . . you have a separately insulated upright freezer that holds 166 lbs. of food at zero-cold temperature. In the door are such exciting conveniences as a shelf for ice cream . . . racks for frozen fruits, juices . . . a freezer wrap dispenser . . . and unrefrigerated storage for bananas. Now open the right-hand door . . . you have a spacious refrigerator with shelves that roll out . . . the magic of "moist cold" that keeps foods fresh without covering . . . huge moisture-seal crispers . . . a roomy, slide-out basket for fruits.

And look at the refrigerator door with its breakfast bar that stores bacon, eggs, juices . . . the cheese chest and butter chest . . . plus extra "out front" storage for snacks, bottles, jars. Yes you get everything you want in a freezer and a refrigerator in the new, ultra-modern Leonard Foodarama. Nothing like it. Picture it in your kitchen or pantry . . . then come in and see it today!



PECK BROS. FARM SUPPLY

Phone 3654

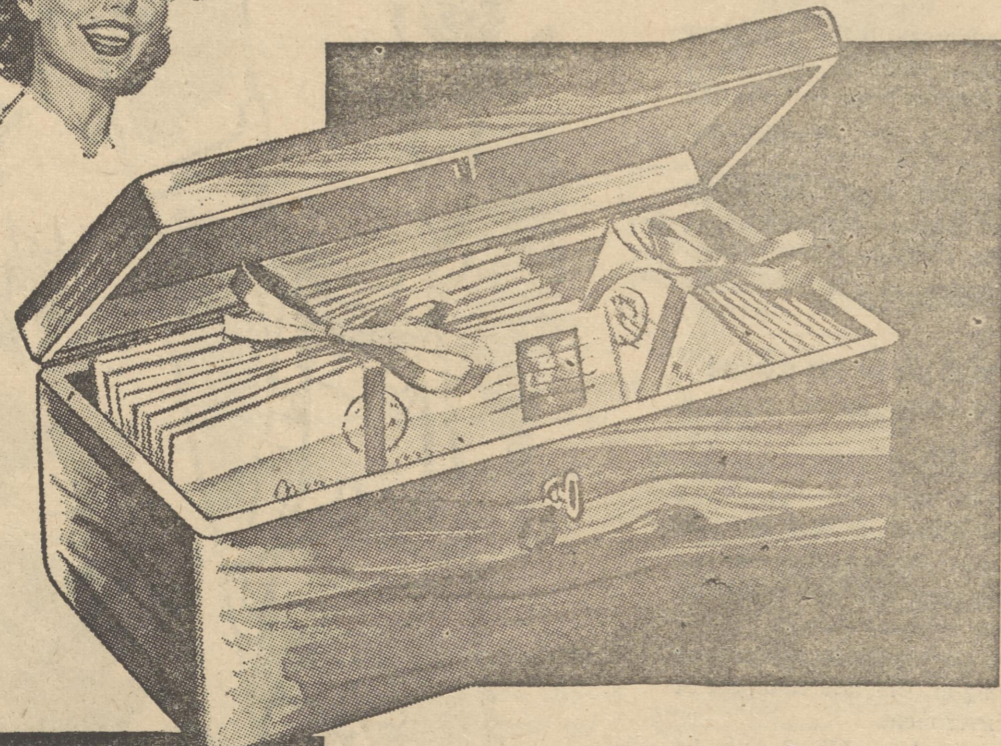
Harrington, Del.

YOUR SOUTHERN STATES COOPERATIVE SERVICE AGENCY

HARRINGTON FELTON HIGH... GIRL GRADS



A FREE Graduation Gift awaits you at our store!



You'll find "1001" things to keep in this genuine miniature Lane Cedar Chest—costume jewelry, personal letters, treasured souvenirs that call for a private little place of their own!

Be sure to enter Lane's \$10,000 "Name-the-Chest" Contest! Win a college scholarship or a complete outfitting of Lane furniture for your "dream" house.

Cahall's Gas Service Co.

Phone 3642

Harrington, Del.

Property Transfers

Edward H. & Josephine D. Dill, Dover to Harley D. & Hazel F. McKee, Dover loc. east side of Gov's Ave. in Dover adj. lands now or late of Maria E. Sypher on north, lands formerly of David H. Zearfoss on south, Gov's Ave. on west, being lot No. 45, sec. 8, on plot of Fultons Addition to Dover. \$17,500 stamps \$22.

Mabel Godwin Mohler, Rising Sun to Masonic Home of Delaware, Inc., loc. Rising Sun adj. lands of Daniel B. Townsend, lands of Mary S. Frist & lands of others, 9,000 sq. ft. more or less. \$10.

Charles J. & Anna Baird Speed, Wilmington loc. to Carl R. & Janet H. Barr, Camden loc. western part of Frederica, lying on north side of pub. rd. leading toward Felton adj. Samuel W. Darby, Jr., \$22,500.

Nelson & Mary E. Harris et ux, Houston to Bertha Hall, nr. Houston loc. Milford Hund. lying east of old main pub. rd. leading from Marvel Crossroad at Harrington to Milford St. Hwy. adj. southwest to Williamsville, 6,300 sq. ft. \$150.

Benjamin J. & Marie J. Stanowski, Caroline County, Md., to State of Maryland to the use of State Roads Commission of Maryland loc. No. 1, Marydel, partly in Caroline County, Md., partly in Kent County, Del. No. 2, Woodland, in 1st Election District, Caroline County, Md. adj. No. 1, James A. Scotten lot, Edward H. Morris lot, Main St. & other lots. No. 2, Lands now or formerly of John Daily & Emory Vane on north, on west lands now or formerly of William Bridles, on south lands now or formerly of Mrs. Elizabeth J. Carmean & on east, lands now or formerly of heirs of the late Nathaniel Wilson. No. 1, 62 acres, more or less. No. 2, 7 acres, more or less. \$10 stamps 14.30 & other considerations.

Ollie D. & Mary E. Loose, Smyrna to Susie Knotts, Smyrna loc. Duck Creek Hund. lying on northerly side of pub. rd. leading from duPont hwy. nr. Belmont Hall, westerly across Delaware R.R. towards Kenton adj. aforesaid pub. rd. on south, lands of grantors on north & east, 9,000 sq. ft. more or less. \$5 stamps \$55 cts.

Susie Knotts, Kenton to Lester & Audrey Slover, Kenton loc. Duck Creek Hund. lying on northerly side of pub. rd. leading from duPont hwy. nr. Belmont Hall, westwardly across Delaware R.R. towards Kenton adj. aforesaid pub. rd. on south, lands now or formerly of Winfield Allen on west, lands now or formerly of Ollie D. Loose et ux, on north & east, 9,000 sq. ft. more or less, \$1 & other considerations.

Marilyn S. & John E. Wilson, 3rd, etal, Smyrna to Kenneth R. Bragg & Mildred M. Erhart, New Castle loc. Lot No. 27, Cottage Dale Acres, Smyrna, \$1500 stamps \$1.65.

Roland & Doris Wise, Dover to Francis & Evelyn Magur, Newfield, N. J. loc. lot No. 13, block F, Capitol Park. None stamps \$1.10.

Helen Y. Parker, Philadelphia, to William A. & Sara Z. Parker, Philadelphia loc. No. 1, North-west cor. of Kirkwood St. & Reed St. in Dover, adj., No. 1, Lands of late of Henry Dorzback & lands of late Sallie C. Stevenson, Kirkwood St. on east, Reed St. on south, lands of Morris Simon on west, Loc. No. 2, lying on west side of S. Gov's Ave. below Water St. in Dover, adj. No. 2, Other lands of Stephen Slaughter, Kerbins Ditch, Gov's Ave. loc. No. 3, Lying on west side of Gov's Ave. adj. No. 3, Lands of Annie Slaughter, S. Gov's Ave. loc. No. 4, Lying on west side of

Gov's Ave. south of Water St. adj. No. 4, Lands or save Dr. Henry Ridgley, lands of late Stephen Slaughter. Loc. No. 5, West side of S. Gov's Ave. south of Water St. adj. No. 5, Lands late of Stephen Slaughter. loc. No. 6, Dover, lying on east side of Gov's Ave. bet. Water St. & Bank Lane. adj. No. 6, Lands late or William B. Uhlig, deceased, on east, on south lands of Annie Slaughter, Gov's Ave. on west. loc. No. 7, Northeast cor. of Water St. & Gov's Ave. in Dover, adj. No. 7, Lands late of heirs of Emory Scotten, deceased, & other lands. loc. No. 8, East of Wst St. in Dover bet. Reed & Division Sts., adj. No. 8, Lands late of Sallie Stevenson on the south & lands of others, loc. No. 9, lying on east side of West St. in Dover, adj. No. 9, West St. & Fulton St. loc. No. 10, West side of Kirkwood St. bet. Looekerman & Division Sts. in Dover, adj. No. 10, Stevenson lot. No. 1, be the contents what they may. No. 2, be the contents what they may. No. 3, 3,622 1/2 sq. ft. more or less. No. 4, 16,950 sq. ft. more or less. No. 5, 7,406 sq. ft. more or less. No. 6, be the contents what they may. No. 7, be the contents what they may. No. 8, be the contents what they may. No. 9, 6,480 sq. ft. more or less. No. 10, 4,500 sq. ft. more or less \$1.

Margaret G. Warner & John H. Gooden, administrators of John Herman Gooden, Delaware to Willard M. Wright, N. Murderkill Hund. loc. N. Murderkill Hund. lying on north side of pub. rd. leading from Willow Grove to Mud Mill adj. lands of Edward B. Carter, lands formerly of heirs of Thomas W. Gooden, lands of heirs of Emory Sealten & lands of others. 23 acres, more or less. \$580.

Henry & Delema Austin, N. Murderkill Hund. to Clarence W. & Carol Austin, N. Murderkill Hund. loc. northerly side of dirt rd. leading from Barkers Landing, westerly to U.S. rte. No. 113-A, in N. Murderkill Hund. adj. lands of Wilson H. Austin. dim. 624 sq. ft. more or less. \$1 & other considerations.

Henry & Delema Austin, N. Murderkill Hund. to Martin L. & Pearl A. Storey, Magnolia loc. on northerly side of dirt rd. leading from Barkers Landing, westerly to U. S. rte. No. 113-A, in N. Murderkill Hund. adj. other lands of Henry Austin et ux, dim. 10,478 sq. ft. more or less, \$1 & other considerations.

Nathan E. & Ethel B. Wing, Camden to State Consolidated School District No. 1, Camden loc. lying on north side of Commerce St. in Camden adj. lands now or formerly of William Oscar Dawson, lands of State Consolidated School District No. 1, lands now or formerly of Arthur W. Rounds et ux, be the contents what they

may, \$14,000 stamps \$15.40.

Martin & Julia Janeka et ux, Dover to Martin D. Janeka, Camden loc. Par. No. 1, situated within the corporate limits of the Town of Camden, lying on north side of Willow Ave. adj. Par. No. 1, Walton H. Simpson & Anna Lee, Edward C. Garney, Arlington Jackson. dim 17,500 sq. ft. loc. Par. No. 2, with Camden lying on southerly side of Commerce St. & lands of Camden-Wyoming Fire Company, 1.23 acres. \$1 & other considerations.

George F. & Carmella R. Campana, Dover to Roslyn P. & William S. Cravena, Jr., Dover loc. Wyoming, lying on west side of Pine St. adj. lands of Lillian Benson on north, lands of William Draper on west, lands of Sadie E. Neese on south, Pine St. on east. dim. 50 ft. by 140 ft. more or less. \$11,400 stamps \$12.65.

Mary H. & J. William Hollis, Jr., Milford Hund. to Leon & Juanitia M. Donovan, Harrington, loc. lying in Milford Hund. beg. at a point in southern side of Milford to Harrington st. hwy. lot. No. 3, 19,530 sq. ft. \$1 & other considerations.

The National Bank of Smyrna, Executors under Last Will & Testament of John McFann, to James H. & Helen M. Spense, Smyrna loc. Smyrna, lying on south side of Commerce St. bet. Pearl & High Sts. adj. Commerce & Mulberry Sts. 6,400 sq. ft. more or less. \$1,015 stamps \$1.65.

Wesley Junior College, Dover to Lewis & Rosa A. Bailey et ux, Dover loc. lying on west side of American Ave. 15,000 sq. ft. \$5000.

Henry P. & Ruth I. Moore, Kenton Hund to George V. Moore Trustee, Dover loc. Kenton Hund. lying on south side of pub. rd. leading from Cheswold to Masses Mill Pond adj. lands of Casper Schmidt, lands of Johnson. 1 acre, more or less. \$1.

Davis D. & Ruth H. Hannum, Woodside to Ethel M. Gehrman, Wyoming loc. on south side of South Blvd. in Wyoming adj. lands now or formerly of Hiram Cooper on east, lands now or late of Emma Knight on south & other lands of Edward J. Ratledge et ux, on west. 13,360 sq. ft. more or less. \$10 stamps \$4.40 & other considerations.

Stephen & Kathleen, Jr., Camden to Clarence C. & Mary S. Thompson, Camden loc. in Camden, lying on west side of street running parallel to west of dual hwy. U. S. rte. No. 13, on west by lot No. 4 & part of No. 2 of plot of Borden Den. \$75.

Herman & Agnes Vinyard, Frederica to Harry & Thelma Faulkner, Frederica loc. north side of Front St. & also on north side of hwy leading from Frederica to Felton in Frederica adj. lands now or formerly of Reynolds Gooden et ux, on west, on east and north, other lands of Herman Vinyard & on south, the aforesaid street. Be the contents what they may. \$600 stamps \$1.10.

Sallie R. Davidson, Frederica to Robert & Gladys Harding, Milford loc. north side of Main St. in Bowers. \$7500.

John & Lucille Peterson et ux, Bowers to Dallas C. Moore, Viola loc. No. 1, lying on west shore of Delaware Bay, southwest cor. for lands of William R. Rogers, northwest cor. of Earle Faulkner. No. 2, in North Bowers, adj. No. 1, adj. Par. No. 2, on northwest cor. adj. No. 2, adj. par. No. 1 on northwest cor. \$800.

Addison & Bertha Burris, Townsend to William & Daisy Cox, Sr., Smyrna loc. lying on southwesterly side of High St. adj. High St. on northeast, lands now or formerly of Ralph Manchester on the southeast, lands of Addison Burris on southwest & northwest. Be the contents what they may. \$600 stamps \$1.10.

Edwin & Helen Heintzleman, Dover to Dorothy & Edward Cox, Jr., Dover loc. lot No. 131 & westerly 25 ft. of No. 132, Edgehill Acres. \$5 stamps \$2.55.

Restmoore Corp., Delaware to Fannie Harrington, Dover loc. E. Dover Hund. lying on southerly side of 30 ft. ext. of Coopers rd. which leads westerly from St. hwy. leading from Dover to Moore's Lake adj. William McDaniel development of lands at Moore's Lake & Cooper rd. Be the contents what they may. \$10 stamps \$5.50 & other considerations.

Bessie Bennett, Clayton to James & Teresa Messick, Dover loc. Clayton, adj. land belonging to Town of Clayton, Addie Vander & Apple Alley. 8,250 sq. ft. more or less. \$10 & other considerations.

Benj. & Eliz. Troyer, E. Dover Hund. to John & Lovina Lehman, Argonia, Kan., loc. E. Dover hund. lying on south side of gravel pub. rd. leading from Central Church to Pearson's Cor. & Moore's Cor. to blacktop rd. adj. on east, south & west other lands of grantors. 1 acre, more or less. \$10.

Charles & Helene Ridgley, Camden to Melvin & Sylvia Saulsberry, Dover loc. Camden, lying on south side of Center St. adj. Center St. on north, other lands of grantors on east & south, land of Cooper on west. \$550 stamps \$1.10.

June M. Williams, Milford to Beatrice R. Parker, Milford loc. Milford on east side of North St. adj. 423 North St. with imp. 10,486 sq. ft. \$1.

Milton & Edna Lord, Woodland Beach to Frank & Ruth Burrows, Woodland Beach loc. southeast side of Bombay Hook Ave., subdivision A adj. Lulu Watson, grantees & Robert Tee. \$550.

Walter & Anna Critz, Dover to Elsie K. Fleetwood etal, Georgetown loc. lot No. 1 & southerly half of lot No. 42, block B, Dover Heights. \$10 stamps \$9.35.

Peter & Sara DeMarie, Dover to Harry & Loretta Lepore, Dover loc. No. 1, lying & being in E. Dover Hund. & lying on southerly side of st. hwy. known as U. S. rte. No. 113. 0.99 acres. No. 2, W. Dover Hund. southerly side of pub. rd. leading from Dover to Marydel via Hour Glass adj. Charles & Louis Rainard, Wilmer Patterson, Harry Miller & Henry Schrod. No. 3, Situated on the north side of pub. rd. leading from Dover to Hazletville adj. Alda Powell & Reynolds Reed. 36 acres. \$5.

John & Mary Willis, Dover to Donald & Virginia Wingard, Dover loc. E. Dover Hund. lying on southeast side of pub. rd. leading from Dover to Marydel rd. to Dover to Hazletville rd. adj. lands of Levin Willis, Robert L. Pleasanton. 1,647 acres, more or less. \$500 stamps \$5.50.

John & Mary Willis, Dover to Donald & Virginia Wingard, Dover loc. E. Dover Hund. lying on southeast side of pub. rd. leading from Dover to Marydel rd. to Dover to Hazletville rd. adj. lands of Levin Willis, Robert L. Pleasanton. 1,647 acres, more or less. \$500 stamps \$5.50.

John & Mary Willis, Dover to Donald & Virginia Wingard, Dover loc. E. Dover Hund. lying on southeast side of pub. rd. leading from Dover to Marydel rd. to Dover to Hazletville rd. adj. lands of Levin Willis, Robert L. Pleasanton. 1,647 acres, more or less. \$500 stamps \$5.50.

John & Mary Willis, Dover to Donald & Virginia Wingard, Dover loc. E. Dover Hund. lying on southeast side of pub. rd. leading from Dover to Marydel rd. to Dover to Hazletville rd. adj. lands of Levin Willis, Robert L. Pleasanton. 1,647 acres, more or less. \$500 stamps \$5.50.

John & Mary Willis, Dover to Donald & Virginia Wingard, Dover loc. E. Dover Hund. lying on southeast side of pub. rd. leading from Dover to Marydel rd. to Dover to Hazletville rd. adj. lands of Levin Willis, Robert L. Pleasanton. 1,647 acres, more or less. \$500 stamps \$5.50.

John & Mary Willis, Dover to Donald & Virginia Wingard, Dover loc. E. Dover Hund. lying on southeast side of pub. rd. leading from Dover to Marydel rd. to Dover to Hazletville rd. adj. lands of Levin Willis, Robert L. Pleasanton. 1,647 acres, more or less. \$500 stamps \$5.50.

John & Mary Willis, Dover to Donald & Virginia Wingard, Dover loc. E. Dover Hund. lying on southeast side of pub. rd. leading from Dover to Marydel rd. to Dover to Hazletville rd. adj. lands of Levin Willis, Robert L. Pleasanton. 1,647 acres, more or less. \$500 stamps \$5.50.

John & Mary Willis, Dover to Donald & Virginia Wingard, Dover loc. E. Dover Hund. lying on southeast side of pub. rd. leading from Dover to Marydel rd. to Dover to Hazletville rd. adj. lands of Levin Willis, Robert L. Pleasanton. 1,647 acres, more or less. \$500 stamps \$5.50.

John & Mary Willis, Dover to Donald & Virginia Wingard, Dover loc. E. Dover Hund. lying on southeast side of pub. rd. leading from Dover to Marydel rd. to Dover to Hazletville rd. adj. lands of Levin Willis, Robert L. Pleasanton. 1,647 acres, more or less. \$500 stamps \$5.50.

John & Mary Willis, Dover to Donald & Virginia Wingard, Dover loc. E. Dover Hund. lying on southeast side of pub. rd. leading from Dover to Marydel rd. to Dover to Hazletville rd. adj. lands of Levin Willis, Robert L. Pleasanton. 1,647 acres, more or less. \$500 stamps \$5.50.

John & Mary Willis, Dover to Donald & Virginia Wingard, Dover loc. E. Dover Hund. lying on southeast side of pub. rd. leading from Dover to Marydel rd. to Dover to Hazletville rd. adj. lands of Levin Willis, Robert L. Pleasanton. 1,647 acres, more or less. \$500 stamps \$5.50.

John & Mary Willis, Dover to Donald & Virginia Wingard, Dover loc. E. Dover Hund. lying on southeast side of pub. rd. leading from Dover to Marydel rd. to Dover to Hazletville rd. adj. lands of Levin Willis, Robert L. Pleasanton. 1,647 acres, more or less. \$500 stamps \$5.50.

John & Mary Willis, Dover to Donald & Virginia Wingard, Dover loc. E. Dover Hund. lying on southeast side of pub. rd. leading from Dover to Marydel rd. to Dover to Hazletville rd. adj. lands of Levin Willis, Robert L. Pleasanton. 1,647 acres, more or less. \$500 stamps \$5.50.

John & Mary Willis, Dover to Donald & Virginia Wingard, Dover loc. E. Dover Hund. lying on southeast side of pub. rd. leading from Dover to Marydel rd. to Dover to Hazletville rd. adj. lands of Levin Willis, Robert L. Pleasanton. 1,647 acres, more or less. \$500 stamps \$5.50.

John & Mary Willis, Dover to Donald & Virginia Wingard, Dover loc. E. Dover Hund. lying on southeast side of pub. rd. leading from Dover to Marydel rd. to Dover to Hazletville rd. adj. lands of Levin Willis, Robert L. Pleasanton. 1,647 acres, more or less. \$500 stamps \$5.50.

John & Mary Willis, Dover to Donald & Virginia Wingard, Dover loc. E. Dover Hund. lying on southeast side of pub. rd. leading from Dover to Marydel rd. to Dover to Hazletville rd. adj. lands of Levin Willis, Robert L. Pleasanton. 1,647 acres, more or less. \$500 stamps \$5.50.

John & Mary Willis, Dover to Donald & Virginia Wingard, Dover loc. E. Dover Hund. lying on southeast side of pub. rd. leading from Dover to Marydel rd. to Dover to Hazletville rd. adj. lands of Levin Willis, Robert L. Pleasanton. 1,647 acres, more or less. \$500 stamps \$5.50.

John & Mary Willis, Dover to Donald & Virginia Wingard, Dover loc. E. Dover Hund. lying on southeast side of pub. rd. leading from Dover to Marydel rd. to Dover to Hazletville rd. adj. lands of Levin Willis, Robert L. Pleasanton. 1,647 acres, more or less. \$500 stamps \$5.50.

John & Mary Willis, Dover to Donald & Virginia Wingard, Dover loc. E. Dover Hund. lying on southeast side of pub. rd. leading from Dover to Marydel rd. to Dover to Hazletville rd. adj. lands of Levin Willis, Robert L. Pleasanton. 1,647 acres, more or less. \$500 stamps \$5.50.

John & Mary Willis, Dover to Donald & Virginia Wingard, Dover loc. E. Dover Hund. lying on southeast side of pub. rd. leading from Dover to Marydel rd. to Dover to Hazletville rd. adj. lands of Levin Willis, Robert L. Pleasanton. 1,647 acres, more or less. \$500 stamps \$5.50.

John & Mary Willis, Dover to Donald & Virginia Wingard, Dover loc. E. Dover Hund. lying on southeast side of pub. rd. leading from Dover to Marydel rd. to Dover to Hazletville rd. adj. lands of Levin Willis, Robert L. Pleasanton. 1,647 acres, more or less. \$500 stamps \$5.50.

John & Mary Willis, Dover to Donald & Virginia Wingard, Dover loc. E. Dover Hund. lying on southeast side of pub. rd. leading from Dover to Marydel rd. to Dover to Hazletville rd. adj. lands of Levin Willis, Robert L. Pleasanton. 1,647 acres, more or less. \$500 stamps \$5.50.

John & Mary Willis, Dover to Donald & Virginia Wingard, Dover loc. E. Dover Hund. lying on southeast side of pub. rd. leading from Dover to Marydel rd. to Dover to Hazletville rd. adj. lands of Levin Willis, Robert L. Pleasanton. 1,647 acres, more or less. \$500 stamps \$5.50.

John & Mary Willis, Dover to Donald & Virginia Wingard, Dover loc. E. Dover Hund. lying on southeast side of pub. rd. leading from Dover to Marydel rd. to Dover to Hazletville rd. adj. lands of Levin Willis, Robert L. Pleasanton. 1,647 acres, more or less. \$500 stamps \$5.50.

John & Mary Willis, Dover to Donald & Virginia Wingard, Dover loc. E. Dover Hund. lying on southeast side of pub. rd. leading from Dover to Marydel rd. to Dover to Hazletville rd. adj. lands of Levin Willis, Robert L. Pleasanton. 1,647 acres, more or less. \$500 stamps \$5.50.

John & Mary Willis, Dover to Donald & Virginia Wingard, Dover loc. E. Dover Hund. lying on southeast side of pub. rd. leading from Dover to Marydel rd. to Dover to Hazletville rd. adj. lands of Levin Willis, Robert L. Pleasanton. 1,647 acres, more or less. \$500 stamps \$5.50.

John & Mary Willis, Dover to Donald & Virginia Wingard, Dover loc. E. Dover Hund. lying on southeast side of pub. rd. leading from Dover to Marydel rd. to Dover to Hazletville rd. adj. lands of Levin Willis, Robert L. Pleasanton. 1,647 acres, more or less. \$500 stamps \$5.50.

John & Mary Willis, Dover to Donald & Virginia Wingard, Dover loc. E. Dover Hund. lying on southeast side of pub. rd. leading from Dover to Marydel rd. to Dover to Hazletville rd. adj. lands of Levin Willis, Robert L. Pleasanton. 1,647 acres, more or less. \$500 stamps \$5.50.

John & Mary Willis, Dover to Donald & Virginia Wingard, Dover loc. E. Dover Hund. lying on southeast side of pub. rd. leading from Dover to Marydel rd. to Dover to Hazletville rd. adj. lands of Levin Willis, Robert L. Pleasanton. 1,647 acres, more or less. \$500 stamps \$5.50.

John & Mary Willis, Dover to Donald & Virginia Wingard, Dover loc. E. Dover Hund. lying on southeast side of pub. rd. leading from Dover to Marydel rd. to Dover to Hazletville rd. adj. lands of Levin Willis, Robert L. Pleasanton. 1,647 acres, more or less. \$500 stamps \$5.50.

John & Mary Willis, Dover to Donald & Virginia Wingard, Dover loc. E. Dover Hund. lying on southeast side of pub. rd. leading from Dover to Marydel rd. to Dover to Hazletville rd. adj. lands of Levin Willis, Robert L. Pleasanton. 1,647 acres, more or less. \$500 stamps \$5.50.

John & Mary Willis, Dover to Donald & Virginia Wingard, Dover loc. E. Dover Hund. lying on southeast side of pub. rd. leading from Dover to Marydel rd. to Dover to Hazletville rd. adj. lands of Levin Willis, Robert L. Pleasanton. 1,647 acres, more or less. \$500 stamps \$5.50.

John & Mary Willis, Dover to Donald & Virginia Wingard, Dover loc. E. Dover Hund. lying on southeast side of pub. rd. leading from Dover to Marydel rd. to Dover to Hazletville rd. adj. lands of Levin Willis, Robert L. Pleasanton. 1,647 acres, more or less. \$500 stamps \$5.50.

John & Mary Willis, Dover to Donald & Virginia Wingard, Dover loc. E. Dover Hund. lying on southeast side of pub. rd. leading from Dover to Marydel rd. to Dover to Hazletville rd. adj. lands of Levin Willis, Robert L. Pleasanton. 1,647 acres, more or less. \$500 stamps \$5.50.

John & Mary Willis, Dover to Donald & Virginia Wingard, Dover loc. E. Dover Hund. lying on southeast side of pub. rd. leading from Dover to Marydel rd. to Dover to Hazletville rd. adj. lands of Levin Willis, Robert L. Pleasanton. 1,647 acres, more or less. \$500 stamps \$5.50.

John & Mary Willis, Dover to Donald & Virginia Wingard, Dover loc. E. Dover Hund. lying on southeast side of pub. rd. leading from Dover to Marydel rd. to Dover to Hazletville rd. adj. lands of Levin Willis, Robert L. Pleasanton. 1,647 acres, more or less. \$500 stamps \$5.50.

John & Mary Willis, Dover to Donald & Virginia Wingard, Dover loc. E. Dover Hund. lying on southeast side of pub. rd. leading from Dover to Marydel rd. to Dover to Hazletville rd. adj. lands of Levin Willis, Robert L. Pleasanton. 1,647 acres, more or less. \$500 stamps \$5.50.

John & Mary Willis, Dover to Donald & Virginia Wingard, Dover loc. E. Dover Hund. lying on southeast side of pub. rd. leading from Dover to Marydel rd. to Dover to Hazletville rd. adj. lands of Levin Willis, Robert L. Pleasanton. 1,647 acres, more or less. \$500 stamps \$5.50.

John & Mary Willis, Dover to Donald & Virginia Wingard, Dover loc. E. Dover Hund. lying on southeast side of pub. rd. leading from Dover to Marydel rd. to Dover to Hazletville rd. adj. lands of Levin Willis, Robert L. Pleasanton. 1,647 acres, more or less. \$500 stamps \$5.50.

John & Mary Willis, Dover to Donald & Virginia Wingard, Dover loc. E. Dover Hund. lying on southeast side of pub. rd. leading from Dover to Marydel rd. to Dover to Hazletville rd. adj. lands of Levin Willis, Robert L. Pleasanton. 1,647 acres, more or less. \$500 stamps \$5.50.

John & Mary Willis, Dover to Donald & Virginia Wingard, Dover loc. E. Dover Hund. lying on southeast side of pub. rd. leading from Dover to Marydel rd. to Dover to Hazletville rd. adj. lands of Levin Willis, Robert L. Pleasanton. 1,647 acres, more or less. \$500 stamps \$5.50.

John & Mary Willis, Dover to Donald & Virginia Wingard, Dover loc. E. Dover Hund. lying on southeast side of pub. rd. leading from Dover to Marydel rd. to Dover to Hazletville rd. adj. lands of Levin Willis, Robert L. Pleasanton. 1,647 acres, more or less. \$500 stamps \$5.50.

John & Mary Willis, Dover to Donald & Virginia Wingard, Dover loc. E. Dover Hund. lying on southeast side of pub. rd. leading from Dover to Marydel rd. to Dover to Hazletville rd. adj. lands of Levin Willis, Robert L. Pleasanton. 1,647 acres, more or less. \$500 stamps \$5.50.

John & Mary Willis, Dover to Donald & Virginia Wingard, Dover loc. E. Dover Hund. lying on southeast side of pub. rd. leading from Dover to Marydel rd. to Dover to Hazletville rd. adj. lands of Levin Willis, Robert L. Pleasanton. 1,647 acres, more or less. \$500 stamps \$5.50.

John & Mary Willis, Dover to Donald & Virginia Wingard, Dover loc. E. Dover Hund. lying on southeast side of pub. rd. leading from Dover to Marydel rd. to Dover to Hazletville rd. adj. lands of Levin Willis, Robert L. Pleasanton. 1,647 acres, more or less. \$500 stamps \$5.50.

John & Mary Willis, Dover to Donald & Virginia Wingard, Dover loc. E. Dover Hund. lying on southeast side of pub. rd. leading from Dover to Marydel rd. to Dover to Hazletville rd. adj. lands of Levin Willis, Robert L. Pleasanton. 1,647 acres, more or less. \$500 stamps \$5.50.

John & Mary Willis, Dover to Donald & Virginia Wingard, Dover loc. E. Dover Hund. lying on southeast side of pub. rd. leading from Dover to Marydel rd. to Dover to Hazletville rd. adj. lands of Levin Willis, Robert L. Pleasanton. 1,647 acres, more or less. \$500 stamps \$5.50.

John & Mary Willis, Dover to Donald & Virginia Wingard, Dover loc. E. Dover Hund. lying on southeast side of pub. rd. leading from Dover to Marydel rd. to Dover to Hazletville rd. adj. lands of Levin Willis, Robert L. Pleasanton. 1,647 acres, more or less. \$500 stamps \$5.50.

John & Mary Willis, Dover to Donald & Virginia Wingard, Dover loc. E. Dover Hund. lying on southeast side of pub. rd. leading from Dover to Marydel rd. to Dover to Hazletville rd. adj. lands of Levin Willis, Robert L. Pleasanton. 1,647 acres, more or less. \$500 stamps \$5.50.

John & Mary Willis, Dover to Donald & Virginia Wingard, Dover loc. E. Dover Hund. lying on southeast side of pub. rd. leading from Dover to Marydel rd. to Dover to Hazletville rd. adj. lands of Levin Willis, Robert L. Pleasanton. 1,647 acres, more or less. \$500 stamps \$5.50.

John & Mary Willis, Dover to Donald & Virginia Wingard, Dover loc. E. Dover Hund. lying on southeast side of pub. rd. leading from Dover to Marydel rd. to Dover to Hazletville rd. adj. lands of Levin Willis, Robert L. Pleasanton. 1,647 acres, more or less. \$500 stamps \$5.50.

John & Mary Willis, Dover to Donald & Virginia Wingard, Dover loc. E. Dover Hund. lying on southeast side of pub. rd. leading from Dover to Marydel rd. to Dover to Hazletville rd. adj. lands of Levin Willis, Robert L. Pleasanton. 1,647 acres, more or less. \$500 stamps \$5.50.

John & Mary Willis, Dover to Donald & Virginia Wingard, Dover loc. E. Dover Hund. lying on southeast side of pub. rd. leading from Dover to Marydel rd. to Dover to Hazletville rd. adj. lands of Levin Willis, Robert L. Pleasanton. 1,647 acres, more or less. \$500 stamps \$5.50.

John & Mary Willis, Dover to Donald & Virginia Wingard, Dover loc. E. Dover Hund. lying on southeast side of pub. rd. leading from Dover to Marydel rd. to Dover to Hazletville rd. adj. lands of Levin Willis, Robert L. Pleasanton. 1,647 acres, more or less. \$500 stamps \$5.50.

John & Mary Willis, Dover to Donald & Virginia Wingard, Dover loc. E. Dover Hund. lying on southeast side of pub. rd. leading from Dover to Marydel rd. to Dover to Hazletville rd. adj. lands of Levin Willis, Robert L. Pleasanton. 1,647 acres, more or less. \$500 stamps \$5.50.

John & Mary Willis, Dover to Donald & Virginia Wingard, Dover loc. E. Dover Hund. lying on southeast side of pub. rd. leading from Dover to Marydel rd. to Dover to Hazletville rd. adj. lands of Levin Willis, Robert L. Pleasanton. 1,647 acres, more or less. \$500 stamps \$5.50.

John & Mary Willis, Dover to Donald & Virginia Wingard, Dover loc. E. Dover Hund. lying on southeast side of pub. rd. leading from Dover to Marydel rd. to Dover to Hazletville rd. adj. lands of Levin Willis, Robert L. Pleasanton. 1,647 acres, more or less. \$500 stamps \$5.50.

John & Mary Willis, Dover to Donald & Virginia Wingard, Dover loc. E. Dover Hund. lying on southeast side of pub. rd. leading from Dover to Marydel rd. to Dover to Hazletville rd. adj. lands of Levin Willis, Robert L. Pleasanton. 1,647 acres, more or less. \$500 stamps \$5.50.

John & Mary Willis, Dover to Donald & Virginia Wingard, Dover loc. E. Dover Hund. lying on southeast side of pub. rd. leading from Dover to Marydel rd. to Dover to Hazletville rd. adj. lands of Levin Willis, Robert L. Pleasanton. 1,647 acres



SINGERS AT GATHERING OF HARRINGTON ALUMNI AND GUESTS SATURDAY NIGHT — In Harrington School Cafeteria are seen the following persons (left to right): Reese B. Harrington, Thomas Peck Jr., Miss Barbara Edwards, Leonard Horleman, Donald Kent, Dick Richards, Randall Knox Jr., and Cabbage Brown. Hidden by Mr. Knox is Keith S. Burgess.

Felton

The officers of the W.S.C.S. will be installed at the church services this Sunday morning.

Attending the Peninsula Annual Conference at Grace Church, Wilmington last week were Rev. and Mrs. Larry Renner, delegate, Mrs. Lynn Torbert and alternate, Mrs. Marion McGinnis.

Louise Henry and Dorsey Hammond, delegates from the Felton M.Y.F., attended Youth Laymen's Day held at St. Paul Church, Wilmington, Saturday.

Miss Nellie Hughes spent a few days last week with her sister, Mrs. Royal Smith, in Wilmington.

Mr. and Mrs. Lott Ludlow and family were recent guests in Springlake, N. J., with Mr. Ludlow's mother, Mrs. Fred Ludlow.

James Pizzadilli, president of the local camp of the Gideon Society of Dover attended the Gideon Society Convention in Washington, D. C., the past Saturday.

Mrs. Virginia C. Morrow and Mrs. W. C. Milbourn attended the 36th annual session of the grand chapter of the Delaware Order of the Eastern Star, last Monday and Tuesday in the Gold Ball room at Hotel duPont, Wilmington.

Mrs. Milbourn the past grand organizer is in Maine this week attending the National Grand Chapter of the Order of Eastern Star.

Mr. and Mrs. Amos Layton of Harrington spent Friday with Mr. and Mrs. Lee Harrington.

Mr. and Mrs. Russell Torbert had for their luncheon guests Saturday, Mrs. Torbert's cousin, Mrs. Clarence Wilkie and Mr. Wilkie, of Hollywood, Fla.

Saturday evening visitors of Mr. and Mrs. Max Stopfer and daughters, Maxine and Betty Lou, were Mr. Stopfer's sister, Mrs. Irma Sahms and Charles Sharp of Sewell, N. J. and Mrs. Stopfer's father, Peter Capor and Mrs. Capor of near Laurel.

The date for the annual street fair has been set for July 13. More information on this project will be given from time to time.

Last Wednesday visitors of Mrs. Cora Killen were Mrs. Ella Walker and Mrs. Lulu Coffins of Milford.

Johnnie Gleason and Elmer Kates spent Sunday at Sunset Park.

Saturday evening visitors of Mr. and Mrs. Wade Shaub were Gootie Stevens and daughter, Esther of Wilmington.

Mr. and Mrs. Lynn Torbert and Mr. and Mrs. Walter Moore attended the Sunday morning worship service of the Peninsula Annual Conference at Grace Church, Wilmington and were Sunday afternoon visitors in Swarthmore, Pa.

Mrs. Hubert Dill of Magnolia, Mrs. Cora Hughes and Miss Dorothy Heyd spent the weekend at Jamestown and Williamsburg, Va.

Mr. and Mrs. Forrest Syppit and children Bunny, and David of Irwin, Pa., were the weekend guests of Mr. and Mrs. James Pizzadilla and family.

Mr. and Mrs. Albert Warren and daughter, Patty, had for their Sunday dinner guests, Mr. Warren's aunts, Mrs. C. Percy Bittle and Miss Mary Downes of Denton, who have just returned from a trip around the world, and Mr. and Mrs. Hockett Downes, also of Denton.

Mr. and Mrs. Fred Bailey, Sr., of Harrington, were Sunday dinner guests of their son and wife, Mr. and Mrs. Fred Bailey Jr. The occasion was the birthday of Fred Bailey, Jr.

Mrs. Joseph Alcorn and son,



CHECKING SOIL ACIDITY — "We can do a pretty good job checking soil acidity with this portable pH meter," William Mitchell, University of Delaware agronomist, tells three farmers in the Harrington area. From left to right are Delbert Cain, Maurice Adams, Frank Tharp and Mitchell. Other farmers can see this pH meter as well as a hay moisture meter in use during the Hay and Pasture Day program on June 4th (rain dates—June 5th or 6th), starting at the Robbins Webb farm near Milford. Plans for the full program include a fried chicken picnic lunch at noon and a visit to the farm of George Simpson at Houston in the afternoon. Further information can be obtained from the county agents William H. Henderson at Georgetown or George Vapaa at Dover.

Bobby of Wilmington spent the weekend with Mrs. Alcorn's parents, Mr. and Mrs. Howard Blades.

Mr. and Mrs. Russell Torbert and son, Jimmie were Sunday visitors at the University of Delaware, Newark.

Mr. and Mrs. Hammond Coverdale and daughters of Hollywood were Sunday visitors of the former's parents, Mr. and Mrs. Benjamin Coverdale.

Andrewville

Mr. and Mrs. Edwin Prettyman spent the weekend visiting Mrs. Paul Clifton and daughters, Ann and Dorothy, of Wilmington.

Leonard Outten, U.S. Navy, spent the weekend with his parents, Mr. and Mrs. Tilghman Outten and family.

Mr. and Mrs. James Morgan were dinner guests of Mrs. Anna Morgan and brother, Clinton, of Burrsville.

Mr. and Mrs. Elver Ryan visited Mr. and Mrs. Russ Scarborough of Milford Friday evening.

Mrs. James Morgan and Miss Sylvia Jean Vincent and Mrs. Raymond McCready attended the Air Force Day service at the Dover Air Base Saturday.

Mrs. Orville Wilson, Mrs. Hubert Cannon, Mrs. Charley Cannon and Mrs. Walter Paskey visited Mrs. Paul Taylor of Wilmington Friday. At this time, Mrs. Taylor is in the Delaware Hospital in Wilmington.

Mr. and Mrs. David Ryan and son visited Mr. and Mrs. Elver Ryan Sunday evening.

Mr. and Mrs. Hubert Cannon had a turkey dinner last Sunday. Those present were, Mr. and Mrs. Charley Cannon, Mr. and Mrs. Orville Wilson, Theodore Wilson of Milford, Mr. and Mrs. Walter Cannon and daughter of Wilmington, Mrs. Carrie Rogers, of Milford, and Mr. and Mrs. Robert O'Brier of Greenwood. They all gathered to help Herbert Cannon celebrate his birthday.

Mr. and Mrs. E. L. Barney and children, Mary and Mike, of Wilmington, were Friday even-

ing visitors of Mr. and Mrs. Norman Butler.

Mr. and Mrs. Louder Vincent and Mrs. Laura Griffith visited John Schelgal in the Milford Memorial Hospital. Mrs. John Schelgal was removed to Delaware Hospital in Wilmington following an accident Friday evening.

Cub Scout News

The committee of the Cub Scouts pack 76 held a planning meeting at the home of Mr. and Mrs. Harold Melvin, Friday evening. The plans were completed for the May Pack meeting to be held at the Harrington Fair Grounds, Sunday at 2 p.m.

India has boosted most coal prices, New Delhi reports.

Too Late To Classify

Card of Thanks
We wish to thank friends and relatives for cards, flowers and kindness shown us during our recent bereavement of our father, John C. Hendricks.

Grace Hendricks and family
11 5-24 exp.

HAVE YOU DONE ANY DECORATING THIS YEAR?

If not look around at those walls which say, "I need a face lifting so hurry down to Wheeler's and see their new WALLPAPER."

WHEELER'S
Phone Harrington 3541

Harrington School News

Student Council

The Student Council presented an assembly, Friday morning. A speech was given by Phyllis Curtis, enumerating the achievements of the Student Council. Prizes were awarded by the student council, for the best assemblies throughout the year. The awards went to the following classes: first prize, Mr. Fox, eleventh grade; second prize, Mr. Rutledge, eleventh grade; third prize, Mrs. Polliit, tenth grade.

Miss Dickrager presented awards to Ronald Swain, and James Coady for achieving the highest scores in math tests, which the University of Delaware provided.

Mr. Fox presented awards extended by a business school to the outstanding students in spelling ability from grades 11 and 12. They are: Lelia Ellers, Jean Outten, Robert Timko, Ann Kotlaba, Eleanor Wagner, Peggy Moore.

Officers of the Student Council for the ensuing year: president, Faye Spicer; vice-president, Emily Ann Brown, secretary, Jimmy McDonald, treasurer, Bonnie Lee Dickerson.

In addition to the local duties, Faye Spicer is serving as president of Kent County Student Council Association, while Jimmy McDonald is secretary-treasurer.

Guest of Rotary Club

The members of the Senior Class of Harrington High School will be the guests of the Rotary Club at a dinner Tuesday even-

ing. Dr. Donald J. Duffenbaugh, Stat Director of Guidance, will be the speaker.

First Grade—Mrs. Howard

Mrs. Howard's first grade made paper carnations for our mothers and also, Mother's Day cards.

We miss two of our classmates. Gene Manges has moved to New York and Stephen Drayton to Canada.

Grade Five—Miss Long

These are some of the poems we wrote for Mother's Day:

My Mother
To the one so sweet
Who keeps me nice and neat
This card is to say
Happy Mother's Day!

Dawn Hopkins
To Mother
I love you on Mother's Day
I love you through the year,
And when you call me, your
sweet voice
I always love to hear.

Ruth Ann
The Sweetest Mother
My mother is the sweetest,
Of all the mothers I know
Who can help me when I need
her,
Through the years as I grow.
Sharon Goodhand
My Mother
You are as sweet as a honey bee
As pretty as the flowers on an
orange tree
You are as nice as you can be
I love thee.

Marilyn Ruth Jarrell
Mother
All I can say
Is happy Mother's Day
I hope you like this card
I want you to know I tried very

DIAMOND STATE
DRIVE-IN THEATER
U. S. 13 Felton

FRI., SAT., MAY 24-25
1. "TWO GUN LADY"

2. SHOCK-FULL OF THRILLS!

CREATURE
WITH THE
ATOM BRAIN
Starring RICHARD DENNING and ANGELA STEVENS

SUN., MAY 26

VISTAVISION
THE SEVEN
LITTLE FOYS
starring Bob Hope
as Eddie Foy
MILLY VITALE
with GEORGE TOBIAS - ANGELA CLARKE
Directed by Melville Shavelson
Written for the screen by Melville Shavelson and Jack Rose

MON., TUES., MAY 27-28

A DRAMA OF TEEN-AGE
Terror!
M-G-M's
BLACKBOARD
JUNGLE
Starring GLENN FORD
ANNE FRANCIS - LOUIS CALHERN

GREAT COMEDY!
GLENN FORD
TERRY MOORE
The RETURN OF OCTOBER
A Columbia Reprint

WED., THURS., MAY 29-30

JANE VAN
WYMAN - JOHNSON
"MIRACLE IN
THE RAIN"

PRESENTED BY WARNER BROS. with
PEGGIE CASTLE - FRED CLARK
ALAN KING NOVEL AND SCREEN PLAY BY BEN HECHT
PRODUCED BY FRANK P. ROSENBERG
DIRECTED BY FRANK P. ROSENBERG
MUSIC COMPOSED AND CONDUCTED BY FRANK WARREN

JOHNNY WEISSMULLER
JUNGLE
MOON
MEN
A COLUMBIA PICTURE
with JEAN BRION - HELENE STANTON - BILL HENRY and BARRA
Screen Play by GEORGE F. BARKER and JOE PARRANO
Directed by SAM KATZMAN - Directed by CHARLES S. GOULD

Super 13 DRIVE-IN
Theatre Milford, Del.
ADMISSION: ADULTS 60c — CHILDREN under 12 yr. FREE
SHOW STARTS 8:30

THURS., FRI. & SAT.,
MAY 23, 24 & 25

WHY DID
MAMIE STOVER
HAVE TO LEAVE
SAN FRANCISCO
JANE RUSSELL
RICHARD EGAN
The Revolt of
MAMIE STOVER
CINEMASCOPE
CORNEL WILDE - MICHAEL WILDING
ANNE FRANCIS - GEORGE SANDERS

THE CITY THAT ROCKED THE
WORLD'S HOTTEST STRIP
OF HELL...
BANDIDO
ROBERT MITCHELL - URSULA THRESS
GILBERT ROLAND - JIMMY DOTT
M-G-M presents
The Scarlet
Coot
IN COLOR AND
CINEMASCOPE
MARION BRANDO
GLENN FORD
MACHIKO KYO
THE TEAHOUSE OF
THE AUGUST MOON

TUESDAY & WEDNESDAY, MAY 28 & 29
Two Big First Run Hits

Such new Comedy!
OLIVIA DE HAVILLAND
JOHN FORSYTHE - MYRNA LOY
ADOLPHE MENOU
the AMBASSADORS
DAUGHTER
WESTERN ACTION--
BUSTER
CRABBE
ROBINSON
GUN
BROTHERS

Never before...
PRICED SO LOW

COMBINATION
REFRIGERATOR-
FREEZER
2 in 1
LOOK AT THESE BIG FEATURES:
● Revolving Shelves... put all foods at your fingertips... fully adjustable even when loaded. Adjusts up or down 1/2 inch for each turn.
● Magnetic Safety Door... closes automatically, silently, securely. No mechanical latch... helps protect children from danger of being locked inside.
● Removable and Adjustable Door Shelves... sturdy aluminum shelves can be adjusted up or down. Also removable for easy cleaning.
● 5-Year Protection Plan. This Refrigerator-Food Freezer is covered by a one-year written warranty on the complete refrigerator and freezer against defective materials and workmanship, and four years' additional protection on the sealed-in refrigerating system.
BUY WHERE YOU SEE THIS CERTIFICATE!
It's your assurance that the dealer who displays this Certificate of Freshness has been authorized to sell GE appliances and is backed by a fine factory-trained service organization. Buy from a franchised GE dealer only. Be assured of dependable service and the extra years of enjoyment that GE appliances are built to give you.
Price was... \$439.95
NOW ONLY
\$349.95
With Trade

Take advantage of this offer and SAVE \$90!
FISHER APPLIANCES, INC.
MILFORD, DEL.
107 N. E. Front St. Phone Milford 8044

PROTECTED PARKING
AT MOVIE CENTER
WHERE EVERYBODY GOES
IN ENTERTAINMENT
MOVIE CENTER
REESE
DELAND THEATRE-HARRINGTON

Thurs., Fri., Sat., May 23-24-25
A Great All Family Show

THE TALL T
RANDOLPH SCOTT
TECHNICOLOR

2. Bill Elliott in
FOOTSTEPS IN THE NIGHT
Cartoon - Added Treats

Sun., Mon., Tues., May 26-27-28
The Sensational Teenager
James McArthur in

THE YOUNG
STRANGER

Plus Extra Reg. Bonus Hit
What Did You Miss?
Return Unent Version
"THE GIRL CAN'T HELP IT"
Fats Domino Little Richard
Jayne Mansfield Tom Ewell

Wed., Thurs., May 29-30
Never Such 2 Holiday Smash Hits

DOUBLE-HORROR!
Attack of the
CRAB
MONSTERS

NOT
OF
THIS
EARTH

Extra Added Treats

Fri., Sat., May 31 - June 1
1. Donald O'Connor in
"THE BUSTER KEATON
STORY"

2. Bill Bishop in
"PHANTOM STAGECOACH"

YOU'LL MEET YOUR
FRIENDS AT MOVIE CENTER

JEAN OUTTEN IS VALEDICTORIAN; THELMA DRAPER, SALUTATORIAN, AT HARRINGTON HIGH SCHOOL

Jean Outten will give the valedictory speech at the Harrington School Commencement exercises Tuesday evening, June 11, at 8 o'clock in the Field House. She is the daughter of Mrs. Edna Smith Outten.

Thelma Draper is the salutatorian and is the daughter of Mr. and Mrs. Jesse Draper.

Dr. William Bedford Williamson, a former Lehigh University instructor, and Army Transport chaplain during World War II, will address the seniors on "Making a Life."

Baccalaureate services will be conducted by John Symonds, Jr., vicar of St. Stephen's Episcopal Church, Harrington, in the Field House Sunday afternoon, June 2, at 2:30 o'clock.

This year's graduating class is composed of the following members:

James Coady, Elliott Darby, Owein Gruwell, Alvin Jarrell, Ernest Melvin, Allen Needles, Chester E. Wilcox, Jr., Joyce Austin, Rose Marie Bonniwell, Kay Bowdle, Mable Carpenter, Thelma Draper, Barbara Edwards, Mary Evelyn Harrington, Jean Outten, Gladys Welch, Robert Timko.

Ronald Link, Leroy Betts, Richard Knotts, Ronald Lane, Elmer Riggan, Jack Sapp, Eugene Wright, Albert Silberstein, Irene Brown, Phyllis Curtis, Freda Kemp, Dorothy Messick, Janice Minner, Betty Moore, Joyce Porter, Norma Lee Rook, Sandra Raughley, Lena Voss, Eleanor Wagner, and Mary Jo Pitlick.

Those wishing to attend commencement exercises should contact the seniors who have the privilege of distributing tickets for admission.

Mrs. Wm. Humes Re-elected Head of Legion Auxiliary

Mrs. William Humes was unanimously re-elected president of the Callaway-Kemp-Raughley-Tee American Legion Auxiliary Unit No. 7, at the Harrington Legion Post on Tuesday evening, May 21. Other officers who were elected for the 1957-58 year are: Vice-president, Mrs. Thomas Clendenning; recording secretary, Mrs. Ted Layton; corresponding secretary, Mrs. William A. Minner; treasurer, Mrs. Albert Price; Sgt.-at-Arms, Mrs. Alfred Hopkins; chaplain, Mrs. William Jester, and historian, Mrs. Ralph Smith.

Mrs. Leonard A. Taylor, Girl's State chairman, announces that Miss Eleanor Baker and Miss Jeanne Homewood, of the Harrington High School, would be delegates to Girls' State at Wesley College in Dover June 24 to 28. Miss Nancy Whittington will serve as alternate. Two girls from the Greenwood School will be sponsored by the Harrington unit also. They are Miss Ruth Hollinger and Miss Edith Hamstead as delegates, and Miss Betty Scott and Miss Jean Baker, alternates.

Mrs. Humes announced the annual visit of the National President, Mrs. Leta Zeller, on Tuesday, June 4, at Kent Manor Inn in Wilmington. Any member wishing to attend should call Mrs. Humes before Saturday to make arrangements.

The unit will also sponsor a picnic at the Perry Point Veterans Hospital on June 8. Mrs. Gooden Callaway is making the arrangements. Any member who would like to be included in this trip should call Mrs. Callaway.

Plans were completed for the joint installation of officers to be held on June 1 at 6:30 p.m. at the Legion Home. State officers will be present and a program has been arranged.

Don't forget that the auxiliary will be selling Memorial Poppies on Saturday. Be sure to buy one.

The post and auxiliary will attend Divine Services at St. Bernadette's Catholic Church Sunday morning and conduct Memorial Day services on Thursday morning, May 31, at Hollywood Cemetery.

Potted Plant Stolen From Grave

Mrs. Viola Jacobs reported this week the theft of a potted plant from the grave of her mother, Mrs. John Rose, Mother's Day in Hollywood Cemetery.

Mrs. Jacobs said she put the plant on the grave, in the morning, and that, when she visited the grave an hour later with her sister, Mrs. Anna Hampton, the pot had disappeared.

SCHOOL BOARD (continued from page one)

Luther Hatfield, board member, said the law didn't apply since Snow didn't have tenure that is, three-years' teaching in the state and two-years' teaching here. He added the tenure law became effective July 1.

Schlegals Injured In Auto Accident

Mrs. John Schlegal, 45, of Harrington, is in critical condition at Delaware Hospital, Wilmington, where she was taken from Milford Memorial Hospital, after suffering head injuries in an auto accident.

The car driven by her husband ran off Route 14, six and a half miles west of Harrington, and struck an abutment Friday night. Her husband is in fairly good condition in Milford Memorial Hospital.

St. Bernadette's Church Notes

Mass Sunday morning will be at 9:30 with confessions before Mass. There will be no religion classes for high school and grade school children until the fall.

St. John's in Milford will begin Forty Hours devotions Sunday with High Mass at 11 o'clock followed by a procession. Evening devotions will be held Sunday, Monday, and Tuesday evenings at 8 o'clock. A procession Tuesday evening will follow the devotions to mark the closing of the forty hours. Mass Monday morning will be at 6:30 and Tuesday, a High Mass at 8:30. The sermons at the evening services will be given by the Very Reverend Joseph L. McCoy, O.S.F.S., pastor of St. Anthony's church in Wilmington.

There will be no adult instruction class Thursday evening because of the holy day, Ascension Thursday. It is a holy day of obligation and Mass will be said in St. Bernadette's at 4 o'clock in the afternoon. At St. John's in Milford, Mass will be at 7:30 a.m. and 7:30 p.m. We celebrate ascension of Christ into heaven forty days after Easter. By his own divine power Christ, in His glorified body, while His disciples were around Him on Mount Olivet, rose to heaven.

Father Corrigan was master of ceremonies Sunday at St. Edmond's church in Rehoboth, as Bishop Edmund J. Fitz Maurice administered the sacrament of confirmation. Other clergy attending were: Rt. Rev. Msgr. James M. Grant, Rt. Rev. Msgr. William J. McElwaine, Rev. James Peterman, Rev. Roderick B. Dwyer, Rev. Paul B. Fink, Rev. J. Markiewicz and Rev. Francis J. Desmond.

The visiting Oblate for the month was the Rev. Thomas McNamara, O.S.F.S., of the Salesianum High School, in Wilmington.

Hobbs

Our pastor, the Rev. T. J. Turkington, has been returned to us for his 14th year to Grace Church, Denton.

Our W.S.C.S. ladies will meet with Mrs. Paul Maloney next Wednesday afternoon.

Mr. and Mrs. Charles White and children, Monica and Lyle, were Sunday guests of Mr. and Mrs. Roland Towers and family.

Mr. and Mrs. Kenneth Ramsburg, Boonesboro, were weekend guests of her mother, Mrs. Lewis Butler.

Mr. and Mrs. Howard Outten, rural Greenwood, visited Mr. and Mrs. Harry Murphy last Sunday afternoon.

Mr. and Mrs. Paul Maloney and Charlie were Saturday evening guests of Mr. and Mrs. Wesley Stafford and family.

Mr. and Mrs. L. H. Thomas were Sunday afternoon guests of Mr. and Mrs. James C. Hardesty and Carlton of Harrington.

Mr. and Mrs. Marvin Butler and children were Sunday dinner guests of his mother, Mrs. Lewis Butler.

Mr. and Mrs. J. A. Willoughby joined Mr. and Mrs. West and daughter, of Laurel on a visit to Wilmington last Sunday and visited their son, Paul, in Delaware Hospital.

Mr. and Mrs. William Collins were Sunday callers of Mr. and Mrs. Roland Towers and family. Mrs. Clara Stafford joined Mr. and Mrs. Lawrence Christopher Sunday afternoon last, to visit Mr. and Mrs. Albert Shields.

Mr. and Mrs. William B. Reynolds visited Mr. and Mrs. L. H. Thomas last Saturday.

O. H. Henry entertained his daughter, Hazel, and family, of Baltimore last Sunday.

Of Local Interest

Mr. and Mrs. C. Smith of Wilmington and Mrs. Ida Johnson of Milford were Sunday guests of Mr. and Mrs. Nimrod Minner.

Asbury Methodist Church Notes

Church school 10 o'clock, Howard Wagner, superintendent. "A Man of Peace in a World of Strife" will be the title of the lesson in the Adult department.

Morning worship 11 o'clock will be the annual memorial service of Trinity and Asbury churches. This year to be held at Asbury church with the pastor and congregation of Trinity church participating. The sermon will be by the pastor of Asbury church. Everyone is invited to attend this memorial service.

The M.Y.F. will meet at 6:30 in Christ Chapel with Miss Emily Ann Brown in charge of the devotions.

Evening worship at 7:30. The Chancel choir will sing "Recessional" as their anthem. The pastor will continue his series of sermons on "the holy catholic Church" this week pointing out the importance of the "Reformation" in the continuation of the church.

The Pathfinders Class will meet Wednesday evening at 8 o'clock at the home of Mr. and Mrs. John Pitlick Jr., with Mrs. Harold Fry cohostess with Mrs. Pitlick.

The choir will rehearse Thursday as follows: the Junior choir at 3:30, Chancel choir at 6:30 and Cathedral choir at 7:45.

Next Sunday evening at the evening worship hour the Chancel and junior choirs will present a special musical service. This is an annual program at which time awards will be made to members for attendance. This program will mark the end of the season for the choirs and the evening service for the summer.

Both will be resumed again in the fall. Everyone is invited to attend this fine musical program.

At the monthly meeting of the Harrington Ministerial Association Tuesday morning at St. Stephen's parish house the date for the Community Vacation Bible School was set up for June 17 through 28. The director of the school this year will be the Rev. Lorraine Ottinger.

The school will be held at the Harrington Public School for all boys and girls of all the churches in the community.

The altar flowers for this Sunday will be presented by Mrs. J. A. Masten and Mrs. P. C. Harrington.

Mr. and Mrs. Emory P. Hedgecock will be the host and hostess for this Sunday.

Magnolia

The Brownie Troop No. 91, accompanied by their leaders, Mrs. Freelevo Locke and Mrs. Dorothy Smith, and the Girl Scout Troop No. 68, with their leaders, Mrs. Keller and Mrs. Rivera, attended the Armed Forces celebration at the Dover Air Base, Saturday.

The Boy Scout Troop No. 107, with scoutmaster, Herschel Callaway, attended this ceremony and marched in the parade.

Alice Jarrell and Lorna Frese were delegates representing the Magnolia Methodist Youth Fellowship at the Youth Conference at the Newport Church Saturday.

Mrs. Martin Wilcutts has been discharged from the Kent General Hospital after a stay of two weeks there. She is now resting comfortably at her home in a cast which will be necessary for her to wear for several weeks as she fractured a vertebrae at the Dover Roller Rink when she fell there during a skating party sponsored by the MYAF.

Campbell Newhall and Honora placed a basket of flowers in the church Sunday morning in memory of the late Mrs. Margaret Newhall.

Sgt. and Mrs. Wilbur Piet, with their son, Billy, left Tuesday morning for their home in District Heights, Md., near Washington, D. C. Sgt. Piet is being transferred from the Dover Air Base to Andrews Air Base, at Washington.

Mrs. Bess Dill, in company with Miss Heyd, who also teaches at the Felton school, made a trip to Williamsburg, Va., for a weekend of sightseeing the beauties of this historic place.

Clyde Luton accompanied by Mr. and Mrs. Hurd, spent Sunday in Washington with the latter's son and family.

Armed Forces News

Pfc. Bosley T. Truxon, son of Mr. and Mrs. Wilbert Truxon, Route 3, Denton, Md., was graduated May 17 from the field radio repair course at the Army's Southeastern Signal School, Fort Gordon, Ga.

Of Local Interest

Mr. and Mrs. C. Smith of Wilmington and Mrs. Ida Johnson of Milford were Sunday guests of Mr. and Mrs. Nimrod Minner.

Mr. and Mrs. Leon Kukulka and children spent Sunday in Wilmington.

Mr. and Mrs. Robert C. Friedel of Drexel Hill, Pa., were the weekend guests of Mr. and Mrs. Harry Adkins. While here they attended the alumni dinner at the high school.

Mr. and Mrs. Charles Opie of California are visiting their daughter and family, Mr. and Mrs. Earl Yoder and children.

Miss Virgie Copenhaven of Wilmington, spent Friday with Mrs. James Fair.

Mr. and Mrs. William Lord celebrated their wedding anniversary Thursday.

Mrs. E. W. White spent most of last week with her daughter and son-in-law, Mr. and Mrs. W. V. Montgomery of Wilmington.

Mr. and Mrs. Ted Reed have rented a house on U. S. 13 and will move into it after the school year. The Reeds live in Wildwood, N. J. Mr. Reed is manager of the National 5 & 10c Store here.

Della Ryan and Mrs. Lyda Thorpe heard Billy Graham preach Saturday evening in Madison Square Garden in New York City. Mrs. Thorpe said that, of the 18,500 persons present, 1000 went forward to inquire into Christian life.

Gary Harrington had a knee operation in Wilmington Monday. Mrs. Ed Feyerabend had a tonsilectomy last week.

Fish & Game

On the east side of Route 113A just downstream from Moore's Lake near Dover, are a series of five rectangular ponds dating from the days of the W.P.A. Here the Game and Fish Commission specializes in rearing largemouth black bass.

Bass are much easier to grow artificially than many other fish. The male bass selects the nesting site. He fans out a nest on the gravelly bottom and entices the female to join in spawning.

Mama bass deposits from 5000 to 10,000 eggs over the gravel and sperm from the male fertilizes them.

Nesting time begins in late April and continues through May. Incubation of eggs require from seven to ten days depending upon water temperatures. The male guards the nest during incubation and continues guarding the school of fry until they break up.

When the fry are two weeks old, activity really goes into high gear at the rearing ponds. Jim Moore, supervisor of the rearing ponds, has a hurry-up operation to do. Seining the newly hatched bass calls for constant surveillance, for they must be seined quickly and deposited in the adjoining rearing ponds where they are protected from being eaten by the parent fish.

The rearing ponds are periodically fertilized to speed up the growth of plankton—microscopic plants and animals. Increased growth of the plankton means increased growth of the fry, because these tiny fish bass are dependent upon plankton for their food supply. By July the young bass will be about two inches long and are called fingerlings. Now they are ready to be seined and transported in aerated fish tanks to new or reclaimed ponds.

Fire Destroys Kenton Trailer

Fire gutted the trailer of Mrs. Eva Kenton Friday evening in the rear yard of Mr. and Mrs. Leon Porter on Harrington Avenue.

The blaze, attributed to a TV set, had run its course when Mrs. Kenton discovered the damage on her return from Felton where she had been visiting.

No alarm was turned in as the fire, in the aluminum body of the trailer, was not discovered. The contents of the vehicle were also destroyed.

Mrs. Kenton, whose husband, Frank Kenton, died the day before Christmas, is staying with the Porters.

Bill Asks Public Record Of All Aid Recipients

A bill, requesting that all state agencies administering aid submit the names and addresses of all applicants for public assistance to the Levy Courts of each county, was introduced Wednesday in the State Senate.

Hendricks Heads Democrats

Franklin Hendricks was elected president of the Ninth District Democratic Club Friday night at a meeting at the Legion Home.

Other officers elected were as follows: Vice president from the First of the Ninth Representative District, Lawrence Price; vice president from the Second of the same district, Hyland Webb; secretary, James Simpson, and treasurer, Jack Closser.

Directors are as follows: Mrs. Kathryn Simpson, Norris Graham, Mrs. Jehu Camper, Mrs. Jonathan Hopkins, Mrs. T. Brinton Holloway, Mrs. Belle Minner, George Vincent, Mrs. James Wilson, Mrs. Katherine Cannon, Mrs. Ruth Ann Messick, and Leon Donovan.

The club will hold a covered dish supper but the date has not been determined.

Guard Occupies New Quarters

The occupancy of the newly completed Corbit Armory, on Liberty Street, was fulfilled last week when the equipment was moved from the Kent & Sussex Fairgrounds, the headquarters of the local unit of the National Guard for several years.

The structure cost \$160,000.

Kent Aiding Two Schools

The Kent County Levy Court Tuesday appropriated \$500 to the Mid-Del Association for Retarded Children, Clayton, and the same amount to the Kent and Sussex Association for Retarded Children, Harrington.

The Levy Court made the contributions of temporary financial assistance to the two organizations in accordance with authority given by recently-enacted legislation.

Approached by the organizations for aid sometime ago, the members of the court wished to comply but lacked authority.

The result was the introduction of two measures in the state legislature to enable the court to carry out its desire to assist.

The one on behalf of the Kent and Sussex association was presented by Rep. George W. Cain (D-Harrington) and the one on behalf of the Mid-Del association was introduced by Senator Allen J. Cook (D-Kenton).

Both bills were passed by the legislature and signed by Gov. J. Caleb Boggs. The Levy Court quickly made the total of \$1,000 available.

FOR ALL KINDS OF PRINTING

GET OUR PRICES FIRST

THE HARRINGTON JOURNAL

Phone 3209 HOME OWNED HOME EDITED

Bill Asks Public Record Of All Aid Recipients

The public assistance records bill (SB-302) came from Senator Walter J. Hoey (D-Milford), chairman of the joint budget committee. The proposed legislation recommends that the Levy Court record the names and addresses in a "public assistance docket" which could not be removed from the office but which would be "available as a public record for anyone desiring to view the same."

Odd Facts

Good literature and magazines for youth in Frankfurt, Germany, are to be demanded through marking with a sign of quality and through a "White List."

Rabbit breeders have organized to promote extensive Angora rabbit farming in Oudsthoorn, South Africa. An Angora yields 14 ounces of wool a year there.

Japan has revised its five-year electric power program upward, and hopes to reach a total generating capacity of 22,200,000 kilowatts by 1960, Tokyo reports.

Six hundred Boy Scouts from Australia, New Zealand, Tonga, Samoa and Niue, as well as from Fiji, attended a Jubilee Scout Rally in Suva early this year.

A study of Lord Burghley winning a gold medal for Britain in the 1928 Olympics is one of the Dominican Republic's belated Olympic commemorative stamps.

For one penny Ronald Draper bought a 1939 Wolseley car in London, from his friend, Arthur Hardy, leaving for Australia. Hardy was fed up with the prices offered by car dealers.

When Mr. and Mrs. J. Robson celebrated their 64th wedding anniversary in Johannesburg, South Africa, they got a wire from Britain's Queen. They have no idea how she learned of the event.

A giant \$2,000,000 "atomium," 400 feet high, will be a feature of Brussels' World Fair in 1958. It will show the vast progress made in nuclear physics, with escalators taking visitors to the top.

France, Germany, and Luxembourg have formed a joint firm to construct the Moselle Canal to connect Thionville and Coblenz, at a cost of \$85,000,000—185 miles long, 40 yards wide and eight feet deep.

"Culture vultures" in Johannesburg, South Africa, had a cultural feast when the local firm society staged a series of Shakespearean productions.

It got so hot recently in East London, South Africa, that a swallow fainted. It fluttered to earth and hit the road so hard it knocked itself out.

Nurses in Kingston, Jamaica, expressed sympathy with native nurses in South Africa who are having racial discrimination forced on them.

Greece has a \$5,000,000 plan to develop the Vouliagmeni-Kavouri areas near Athens as a tourist resort, with hotels, sports fields and bathing facilities.

A strange cry for help was heard in a river near Port Elizabeth, South Africa, when Xavier Ley, 24, who is deaf and almost mute, got caught in a whirlpool. His muffled cry was heard and he was rescued.

Of 70,000,000 phonograph records sold in Britain in 1956, only five percent were classical music, London reports.

BUICK

SPECIAL SALE OF USED CARS

1954 Super Hard Top, Blue & White, Dynaflo, Radio, Heater, White Walls — a beautiful car at a bargain of a price

1954 Special Hard Top, Titian Red & Grey. A One Owner Beauty. This car just traded to us on a 1957 Hard Top is fully equipped: Dynaflo, Radio, Heater, White Walls, Custom Interior

1952 Special 4 dr., Green & Grey, Dynaflo, Radio, Heater, White Walls, Deluxe Seat Covers and very clean. This car is unusually tight and in excellent condition.

1952 Special 2 dr., Blue. Beautiful finish of metallic blue set off by white walls. Dynaflo, Radio, and Heater

1951 Super Hard Top, Baby Blue. A honey of a car in unusually excellent condition with full equipment. Dynaflo, Radio, Heater, White Walls, Custom Covers

1950 Special 2 dr., Dynaflo, Radio, Heater, New Tires, Excellent Paint

CHEVROLETS

1953 210 4-dr. Just traded by Milford couple on 4 dr. Buick. This car is very clean, good tires, and mechanically tops.

1953 210 4-dr. Light green set off by white wall tires. Nice finish, interior and exterior. Priced to sell—a lot of transportation for a small amount of money.

1951 Deluxe 4 dr., Radio, Heater — a real bargain!

1950 Deluxe 2 dr. Powerglide, Radio, Heater, White Walls

1949 Deluxe 4 dr. Heater — mechanically sound!

FORDS

1954 Station Wagon V-8, Blue & Grey, Radio, Heater, White Walls. Very clean. 1953 Mainline V-8. Standard transmission, Radio, Heater, Fender Skirts

1953 Station Wagon, Fordomatic, Radio, Heater

1953 Customline V-8. Fordomatic, Power Steering, Radio, Heater, White Walls. A beauty!

1953 Mainline V-8. Milford owner — excellent condition — standard transmission.

OTHERS

1951 Cadillac Coupe, Hard Top, Dark Green & White. Hydramatic, Radio, Heater, White Walls

A GOOD PLACE FOR A GOOD DEAL

KENT & SUSSEX MOTOR CO.

Northeast Front St. & Rehoboth Blvd. MILFORD, DEL. PHONE 8011