

## Dawson Shulties, Willow Grove, Files For Levy Court

H. Dawson Shulties, of Willow Grove, filed with the Kent County Democratic Committee Tuesday as a candidate in the August primary for levy-court commissioner from the Second Levy Court District.

The district is comprised of the Third, Fourth, Sixth, and Ninth Representative Districts, with Harrington being in the last two-named districts.

Shulties, a former member of the Democratic State Committee, is a millworker at Dover for M. A. Hartnett, Inc. He is also a member of the Sixth District Democratic Club.

He was born near Willow Grove. The post he seeks is occupied by Fred M. Williams, of Hartly, who is not a candidate for re-election.

## Delaware Mills Group Acquires

The Meltzer family interest in Delaware Mills, Inc., which operates spinning plants at Frederica and New Castle, was acquired Tuesday by a Wilmington group made up largely of minority shareholders.

At a special meeting of the directors, the following new directors were elected: William H. Foulk, Frederick H. Humme, John J. Kavanagh, Charles A. Robinson and Wallace Williams.

Delaware Mills pioneered the development of hi-bulk orlon and has been prominent in other developments in the use of synthetic textile fibers. It will continue operations at both its plant locations, and plans to expand its experimental work under the direction of William H. Michael, vice president in charge of production and research. William C. Appleton is president and a director. Walter E. Ingram, a director, has been appointed treasurer. Mr. Foulk, secretary, and Williams, vice president. Mr. Kavanagh was elected chairman of the Board.

## H.H.S. Wins Fifth Straight Downing Milton, 4-2

The Harrington High School baseball team retained undisputed possession of first place in Kent-Sussex Counties when they jumped on Milton's ace right-hander, Gene Millman, in the first inning for four runs. Millman had previously pitched a no-hitter and a one-hitter and had averaged 15 strikeouts a game. A walk to Taylor, hits by Schiff and Collins, a walk to Welch and a double by Wilson won the game. K. P. Outten provided the fielding gem of the game with a diving catch of a wind-blown fly and converted it into a double play. The team's sixth victory against only one defeat assures Coach McDonald of another winning season as only three games remain on the schedule.

The team has committed only one error in the last two games. Snooky Collins has regained the batting lead from Jim Schiff with a .500 average. Schiff is batting .458.

MILTON	AB	R	H
D. Mushey, 1b	2	1	1
Watts, lf	3	0	1
Millman, p	2	0	0
Wright, 3b	3	0	1
M. Bushey, ss	3	0	0
R. Reed, 2b	3	0	0
A. Reed, cf	0	0	0
Passwaters, rf	3	0	0
R. Mitchell, lf	3	0	0
G. Mitchell, c	1	1	0
	23	2	3

HARRINGTON	AB	R	H
Outten, 2b	3	0	0
Taylor, 1b	2	1	0
Schiff, ss	3	1	1
K. Collins, p	3	0	2
Porter, rf	2	1	0
Welch, lf	1	1	0
Wilson, c	3	0	1
Melvin, cf	2	0	0
Garey, rf	1	0	0
Temple, 3b	2	0	1
	22	4	5

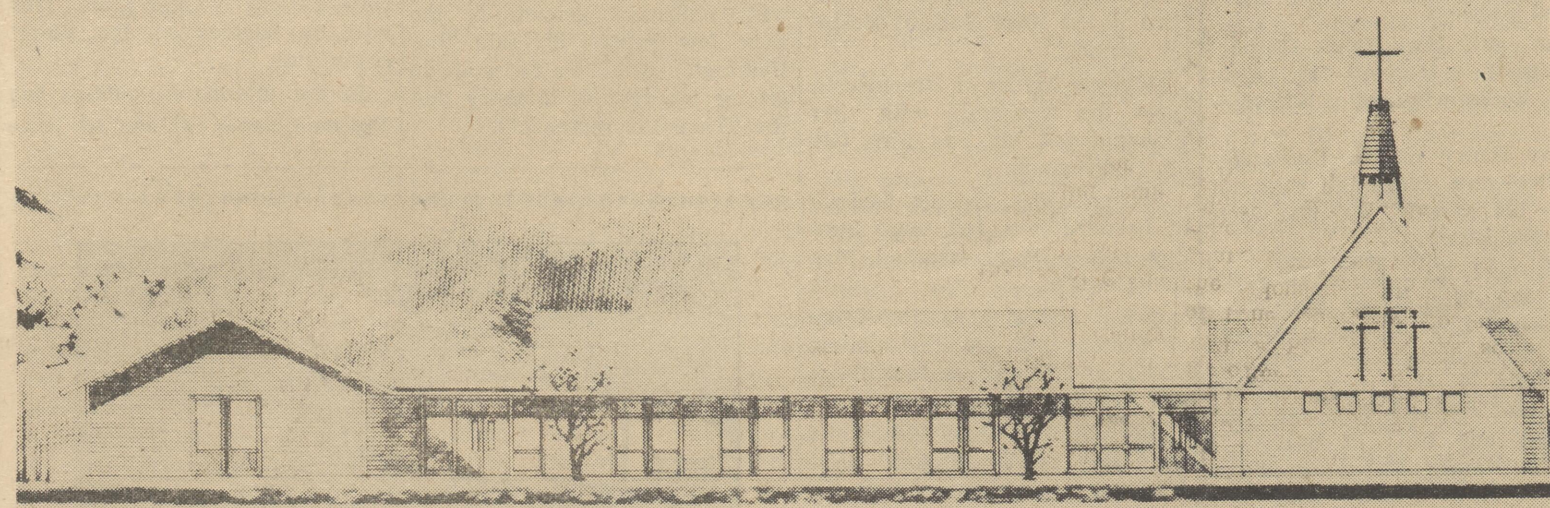
## VANDALS DAMAGE ROLLER

Vandals deflated the tires and tore the wiring from the spark-plugs of a State Highway Department roller Monday night on the Harrington - Whitesburg Road near Thomas School.

## DEMOCRATIC CLUB TO MEET

The Ninth District Democratic Club meet at 8 p.m. today at the American Legion Home on U. S. 13.

Let it rise! Let it rise...—Webster



Architect's drawing of new St. Stephen's Episcopal Church, construction of which is expected to begin about July 1 on a ten-acre tract between Raughley-Hill Road and U. S. 13. Cost of edifice, land and other improvements is estimated at approximately \$150,000. The Rev. John R. Symonds, pastor, said this week that it is anticipated that part of the building will be in use in the fall, with completion hoped for by Christmas. The buildings will be of contemporary design and of frame construction, and will front on Raughley-Hill Road. The east wing, or church proper, will contain sanctuary, chancel, nave, and narthex and will accommodate 290 persons. The sacristy will be located behind the sanctuary, with the organ loft above the sacristy. The dimensions of the east wing will be 32 feet by 90 feet, with a sharply pitched roof rising, at the peak, to 32 feet and supported by laminated arches set into walls 8 feet high. The parish hall, housing a kitchen and entrance foyer, will link the church building with the west wing in which will be located three offices, laboratories, and eight classrooms. The overall frontage will be about 130 feet. The initial plans call for a driveway from Raughley-Hill Road into a circle, with a small parking lot in front of the church. Future plans call for an entrance from Delaware Avenue, with a driveway passing in front of the church and leading to a parking area for 125 cars.

## SCHOOL DISTRICT EYES NEW BUILDING, C. OF C. HEARS

### Felton Teacer Acquitted in Juvenile Court

Juvenile Court Judge Marion Stevenson has acquitted a fifth grade teacher of charges of assault and battery against a pupil. In a decision handed down Monday, Judge Stevenson said that on the basis of the evidence he had found, Mrs. Louise Speicher "not guilty" of charges of assault and battery against Victor C. Bak, a student.

Mrs. Speicher allegedly slapped the Bak boy January 29, and, after being charged in a warrant signed by yBak's parents, she was given a hearing April 8 before Judge Stevenson.

At the time the Felton Board of Education issued a statement maintaining that some corporal punishment is occasionally necessary in the preservation of order and discipline in the school system.

Mrs. Speicher was defended by Atty William G. Bush, III.

### Moose Elects Officers

William Boyd was elected as Governor for the coming year of the Harrington Lodge No. 534, Loyal Order of Moose, at its recent meeting.

Theodore Ivory who now assumes the post of Past Governor, has led the Moose this past year through a very successful and progressive term of office.

The new governor assured the members that he intends to direct the efforts of his office toward continuing the rise of the Moose Lodge to the position of one of the top civic organizations in the community.

Other officers elected or continuing in office are: Junior Governor, Everett Vanderwende; Lawrence Hill, Prelate; Merrill Vanderwende, Treasurer; William Fleischauer, Secretary; John Seaman, 3-year trustee; C. E. McWilliams, 2-year trustee; Richard Wilson, 1-year trustee; James Simpson, Sergeant-at-Arms, and Harvey Passwaters, Inner Guard.

It was also announced that for the balance of the summer months, meetings will be held at 8:30 p.m. on the first and third Tuesdays.

### Fire Alarms

The Harrington Volunteer Fire Company extinguished a chimney fire Friday at the home of Mrs. Ida Brown on West Mispillion Street, and a grass fire on Ward Street extended early Tuesday morning.

Another attempt is being made in Dublin to start an airline to fly between Erie and New York, under the Erie flag. It would have Irish hostesses and try to attract Irish in America and Americans of Irish stock, to American-built planes.

### Kent Defers Tax Rate Decision

The Kent County Levy Court Tuesday deferred fixing the county tax rate for the next fiscal year to await whatever action the General Assembly may take affecting the general assistance welfare costs required of the counties.

The General Assembly is scheduled to reconvene June 2. While the Levy Court has until June 30 to fix the tax rate, the practice has been to set it early in May to enable the Office of the Receiver of Taxes to prepare the tax bills and get them in the mail as early as possible.

The earlier the bills are sent out, the earlier taxes start coming into the county treasury, giving the Levy Court the advantage of the money to meet its obligations, it was pointed out. The tax bills will necessarily be late this year in getting to the taxpayers in view of the circumstances.

County attorneys were authorized at a meeting of members of the three courts at Dover Friday night to prepare proposal legislation which, in the main, is expected to seek the establishment of a ceiling on the amount of money for general welfare assistance that a county must provide.

The proposed legislations is prepared, it is to be submitted by the attorneys to the levy courts for approval and eventual presentation to the Legislature.

The Kent Levy Court had set up \$60,000 in its budget for general welfare assistance next year when the State Department of Welfare advised an estimated \$125,700 for that purpose would be needed, a one hundred and ten per cent increase over the county general assistance outlay during the year now ending, the court recently explained.

Emory N. Lynch, president of the Kent Court, explained Tuesday that Kent County is not in the position of New Castle County in being able to require recipients of general welfare assistance to "work out" the amounts of their relief checks on county projects.

The reason is that Kent County does not have any roads or parklands under its control on which it could place relief recipients to work. It has under its control only the court house. Jurisdiction over the jail was taken over by the state several years ago.

### School Alumni To Dine Tomorrow

Registration for the second annual reunion of the alumni of Harrington School has equalled that of last year and will, possibly, exceed it. Some 360 tickets have been bought for the dinner and dance tomorrow evening.

The graduating class of Harrington School will be guests.

Calcutta, India, is changing its 20,000 gas street lights to electricity, because of the poor quality of gas supplied.

### Coin Collector Surrenders Self, Sleight of Hand Loot

Harold Rudolph Jackson, 32, of Vienna, Md., is a bit of a sleight of hand artist and couldn't pass up an opportunity to practice his skill when he went to the store of Marian Andrew in Farmington Tuesday.

State police detectives at Bridgeville said Jackson went into the store and asked for some sausage and a loaf of bread. These were placed on the counter before him.

Apparently Jackson noted a bag of change on the counter next to the cash register. He asked for a box of soap powder. Andrew brought him a small box but Jackson said he thought his wife wanted a larger box which Andrew didn't have. So, Jackson asked, would the storekeeper wait a minute while he went out and asked his wife if the small box would do? Andrew assented.

When Jackson did not return, Andrew looked around and found the bag, containing \$30.90 in change, missing. He reported to state police.

State police detectives recalled a like incident at Delmar recently and, putting that case together with the Andrew case they thought they had the suspect identified.

They started some discreet inquiries, but word got back to Jackson that he was the suspect. Tuesday night, while Det. J. Milton Messick was doing some investigation at Seaford, along came Jackson. He had \$24.95 of the change from the bag and made good the balance.

Jackson was fined \$100 and costs Wednesday by Magistrate L. Gooden Callaway on a charge of petty larceny.

### Death Takes Edna S. Biggs

Mrs. Edna Stella Biggs, 70, of Houston, wife of former State Representative William Biggs, died Tuesday in the Milford Memorial Hospital.

Mrs. Biggs was a member of the official board of Houston Methodist Church, for over 40 years. She was a former teacher of the young adult class, in the Sabbath School of the church for over 20 years.

She had served as secretary of the Quarterly Conference of the Houston Church for over 25 years, and was a member of all other organizations of the church and Sunday School.

Although in failing health for some time, she attended and served as secretary of the Quarterly Conference at Houston in April.

Services were held at Rogers Funeral Home, Milford, yesterday afternoon with the Rev. Ray W. Kirwan, pastor of the church and the Rev. W. Stanley Grant, retired, a former pastor, officiating. Interment was held in Barrett's Chapel Cemetery.

In addition to her husband, she is survived by one daughter, Mrs. William A. Davis, of Houston and two grandchildren. She also leaves a brother, Urie P. Morris, of the Laws District.

Under the economic development plan, Yugoslavia will get more American surplus goods.

## Council Approves Proposed Zoning Ordinances and Refers Them to Attorney For Drafting

### He's Been Working on the Railroad



J. L. (Jenks) Cahall is receiving congratulations from District Engineer Tom Netherton after the reception of a pin for 40-years' service on the Pennsylvania Railroad. J. E. Ballard, supervisor of track at Clayton, looks on.

The City Council, at a special meeting Monday night, approved a number of proposed zoning ordinances and referred them to City Attorney Herman C. Brown for drafting and advertising.

A Zoning Commission, composed of Mrs. William Humes, William W. Shaw, and William A. Minner had prepared the ordinances in 17 pages of single-spaced typewritten copy.

By the ordinances, the City of Harrington will be divided into three classifications: R-1—Residential districts; R-2—Residential districts, and C-1—Commercial districts.

The scope of the ordinances is as follows: From and after the effective date of the ordinance, the use of all land and every building or portion of a building erected, altered with respect to height and area, added to, or relocated, and every use within a building or use accessory thereto, in the City of Harrington, shall be in conformity with the provisions of the ordinance. Any existing building or structure and any existing use of a building or land not in conformity with the regulations prescribed, shall be regarded as nonconforming but may be continued, extended, or changed subject to special regulations provided with respect to nonconforming buildings or uses.

The Council, in a busy meeting, made the following motions:

To authorize W. B. Mitten & Sons to install 700 feet of sewer on Harrington Avenue extended, instead of Thorpe Street, as stipulated in a contract awarded last week. The contract also called for sewer on Mill Street and part of West Street, water mains on Thorpe Street, Harrington Avenue Extended, and Ward Street from Mill to Thorpe Street.

To curb the south side of North Street and both sides of Shaw Avenue, the City to pay half the costs.

To ask the State Highway Department for permission to use a pit at Killen's Pond for dumping.

To ask the State Highway Department to mend a curb near Trinity Methodist Church adjacent to roadway controlled by the State.

To ask the highway department to investigate a stopped up drain on West Street, controlled by the State.

William Humes appeared before the Council and asked its support of zoning legislation, now in the mill, for Kent County. He mentioned that Lt. Gov. David Buckson had appeared before the Lions Club, earlier in the evening, and approved it.

## H. L. Chamberlain, Railroad Official Honored at Dinner

H. L. Chamberlain, supervisor of structures, who was transferred to a similar position at Indianapolis, Ind., the middle of last month, was honored at a dinner Saturday night at The Wonder Bar.

Tom Netherton, district engineer, was toastmaster.

Chamberlain was presented a golf bag. He said the two years he had spent here were among the happiest of his life. His family will join him after school closes.

Among the out-of-town officials present were R. A. Kendall, supervisor of tracks, Pocomoke City, Md.; C. L. Warrick, district claim agent, Wilmington; J. C. Henry, assistant transmaster, Delmar, and J. A. Jarlett, area engineer, Philadelphia.

## Softball News

Standings as of May 13, 1958	
TEAM	W. L. Pct.
Harrington A. C.	1 0 1.000
Delaware P. & L.	1 0 1.000
National Guard	1 0 1000
Moose Lodge	1 1 .500
American Legion	0 1 .000
Felton V.F.D.	0 2 .000
Bond Bread	0 0 .000

SCHEDULE	
Mon., May 19—	
Nat. Guard vs Amer. Leg.	
Tues., May 20—	
Delaware P. & L. vs Moose	
Wed., May 21—	
Felton V.F.D. vs Bond Bread	
Thurs., May 22—	
Amer. Leg. vs Harrington A. C.	

## WATER AND SEWER AUTHORITY TO BE DISCUSSED WED. NIGHT

### Aspirants File For Kent Posts

The first candidates for nomination for county and district officers, to be voted for at the general election this year, filed their petitions with the Democratic County Committee this week and one contest for a nomination has already developed.

Recorder of Deeds Roy Honey has filed a petition to become the Democratic candidate to succeed himself in that office. His present term will expire this year.

State Senator William B. Behen, of Dover, who completes his term in the Senate this year, has filed to become the Democratic candidate for another term in the State Senate for the First Senatorial District of Kent County, which is comprised of the First and Second Representative Districts.

George Blendt, of Smyrna, and John Tarburton, of East Dover, have both filed for the Democratic nomination for Levy Court Commissioner in the First Levy Court District, which includes the First, Second and Fifth Representative Districts.

Mrs. Claudia Jenkins, of Little Creek, has filed for the Democratic nomination for representative in the General Assembly for the Second Representative District.

H. Dawson Shulties, of Willow Grove, filed Tuesday as a candidate for Levy Court Commissioner from the Second Levy Court District.

The nominating petitions were filed with Max Terry, secretary of the Kent County Democratic Committee, and they will be voted for at the Democratic primary election to be held on a date selected by the county committee, expected to be in August.

In the meantime there is considerable study in progress among the members of the Republican County Committee concerning candidates, although there has been few announcements about prospective candidates.

Walton Simpson, building contractor of Camden, is definitely a candidate for the Republican nomination for State Senator for the Third Senatorial District, which takes in the Fifth and Seventh Representative Districts.

It is understood that Rep. George Ehringer, now serving his first term in the House, can have the Republican nomination for State Senator for the First Senatorial District, should he desire it.

Likewise Levy Court Commissioner J. Ward Hurley, who is also serving his first term in the Levy Court, and represents the First Levy Court District, is expected to be a candidate for the Republican nomination to succeed himself.

A new American - Uruguayan airline will offer reduced rates between Montevideo and Paris.



Harrington High Baseball Team



The local nine has been clicking along very well this season. Those in the picture are as follows (front row, left to right): George Balderson, Tommy McFarland, Jimmy Temple, Bobby Wilson, Snooky Collins, Jackie Porter, and K. P. Outten; back row, left to right: Jimmy Schiff, Jimmy Collins, Donald Garey, Oscar Melvin, Ralph Poore, John Taylor, Dave Welch, Billy Manship, and Coach Harold MacDonald.

Felton

Alumni Banquet and Dance May 31

The annual banquet and dance of the Felton High School Alumni Association will be held at the Felton High School, Saturday, May 31.

The banquet a full-course dinner will be held in the school cafeteria at 6:30 p.m. served by the Ladies Auxiliary of the Felton Community Fire Company. Dancing featuring Bernie Grier's orchestra will start at 9 p. m. in the new school auditorium.

To many this occasion offers an opportunity to renew old acquaintances as well as observe the new and modern additions to the Felton School. This year classes 1908, 1928 and 1933 will be honored.

Reservations must be in not later than Monday, May 26, accompanied by remittance for membership dues and the fee for tickets desired to Kenneth J. Martin, Treasurer, Felton, Del.

The Rev. Larry S. Renner's Mother's Day message was "The Fruit of the Vine." The junior choir sang "Jesus Loves Me." Offertory music was a duet, "Mother," sung by Mrs. Ray Quillen and Mrs. Cliff Chambers. Special music by the senior choir was "A Prayer for Motherhood" with Marie Carlisle singing the solo part. Gifts were presented to the oldest mother, Mrs. Bertha Jarrell, the youngest mother, Mrs. Patsy Biggs Albert and the mother with the most children, Mrs. Rachel Holden. A number of beautiful baskets and bouquets of flowers in the church were presented by four gold star mothers, Mrs. C. M. Simpler, Mrs. Mamie Adams, Mrs. Lou Godwin, and Mrs. Jack Ware.

The annual conference will convene this week, beginning

Thursday in St. Paul's Church, Wilmington. All who can are welcome to attend.

Anyone wishing to visit the new building may do so. An announcement of the date when there will be a consecration service will be announced soon.

Teachers and helpers are still needed for vacation Church School.

Layman Thomas Lawrence Kates will be the speaker next Sunday morning. Rev. Renner will be at conference.

Mr. and Mrs. Lott Ludlow had as their guest last Thursday night and Friday, Mrs. Ludlow's sister, Mrs. Frank R. Poole, of Pittsburgh.

Saturday visitors of Mr. and Mrs. Wade Shaube, were Philip Roache, attorney for FBI and Mrs. Roache of Washington, D. C. Saturday evening their dinner guests were Mrs. Helen Schrade and Mr. Herman Ryan, Wilmington.

Mrs. C. M. Simpler spent Friday in Dover with her grandchildren, Earl and Dorothy Caroline Abbott.

Mr. and Mrs. Kensil Coverdale, Mr. and Mrs. Harold Carlisle and son, Kenneth, have returned from a visit with friends and a sightseeing trip in North Carolina.

Mrs. Thomas McWhite and son, Gary, of Lancaster Court Drive, Wilmington, spent Mother's Day weekend with her parents, Mr. and Mrs. Johnson Steward.

Mrs. Bess Cabbage of Viola, has been spending a few days with Mrs. Anna Mae Gruwell. Mother's Day dinner guests of Mr. and Mrs. Ira Delong and family, Dickie and Arlene were Mr. and Mrs. Robert Delong and children, Mr. and Mrs. Billy Delong, of Moores Lake, Dover, Mr. and Mrs. Jim Hastings and Mrs. Hastings's parents, Mr. and Mrs. Hervey Hastings of Georgetown.

Mrs. Emma Thawley of Greensboro spent several days last week with her sister, Mrs. W. A. Berry.

Mrs. Russell Torbert and Mrs. Lynn Torbert attended May Day exercises at the University of Delaware, Newark Saturday. Miss Nancy Torbert, a Senior at the University, who took part in the exercises came home with them for the weekend.

Mr. and Mrs. Arthur Jones were Sunday dinner guests of Mr. and Mrs. George Robbins, near Milford.

Mr. and Mrs. Howard Melvin of Baldwin, Long Island, N. Y., were the weekend guests of the former's mother, Mrs. Ella Melvin.

Mr. and Mrs. William Kelley, and son, Thomas, Ronald, and Wayne, of Chestnut Hill Newark, were Sunday dinner guests of Mr. Kelley's parents, Mr. and Mrs. Harry Kelley.

W. A. Wilson is convalescing at his home following an operation at the Milford Memorial Hospital.

Mrs. Sadie Berry, Mrs. Anna Mae Gruwell, and Mrs. Samuel Walters, attended the wedding of Mrs. Berry's granddaughter, Miss Mary Carolyn Shockley and First Lt. Sidney Bruce Franklin of New York State, Saturday afternoon in the Methodist Church, Goldsboro, Md.

Mr. and Mrs. Lewis Taylor were guests of Mrs. Taylor's parents, Mr. and Mrs. C. D. Carrow of Greensboro, Sunday.

Mr. and Mrs. Spencer Failing Jr., spent Sunday in Dover with the former's parents, Mr. and Mrs. Spencer Failing Sr.

Mrs. Lillie Greenley is a patient in the Kent General Hospital, Dover.

Sunday dinner guests of Mr. and Mrs. C. M. Simpler were Mrs. Annabel Morrow and son, Bob, Mr. and Mrs. Herbert Abbott,

and children, Earl and Dorothy Caroline, of Dover, Mr. and Mrs. Barratt Simpler and Mrs. Simpler's grandmother, Mrs. Ella Meredith.

Mr. and Mrs. Reed Hughes had as their dinner guests Mother's Day, their mothers, Mrs. Clara Hughes and Mrs. Lenora Langrell of Frederica. Sunday afternoon visitors of Mr. and Mrs. Hughes were their son and family, Mr. and Mrs. Lee Hughes and sons, Billy and Jeffery, of Kirkwood Gardens.

Mr. and Mrs. Lynn Torbert had as their Mother's Day guest, Mrs. William Haines of Wilmington.

Art Henry of the University of Delaware, spent the weekend with his parents, Mr. and Mrs. Howard Henry.

Mr. and Mrs. A. C. Dill and Mr. and Mrs. B. T. East were Mother's Day dinner guests, at the Seaford Tea Room, of Mr. and Mrs. W. H. Parsons and Mr. and Mrs. Kenneth East and sons, Kenny and Billy of Seaford.

Mrs. Janice Moore of Wilmington spent Sunday with Mrs. Hattie Eaton and Mrs. Mae Davis.

The new son of Mr. and Mrs. Lester Blades, born May 6th, on his father's birthday, has been named Lester Harold.

Weekend guests of Mrs. Lola Hurd were Mr. and Mrs. Layton of Silver Springs, Md., and Mr. and Mrs. Edsel Minner and children, Paula Ann and David, of

Seaford. Dorsey Hammond of Swarthmore College spent the weekend with his parents, Mr. and Mrs. William D. Hammond.

Mrs. Helen Harrington is visiting her son and family, Dr. and Mrs. Lee Harrington, and three sons in Winston-Salem, N. C.

Mr. and Mrs. Roland Walls of Baltimore, Md. were Sunday visitors of Mr. Wall's sister, Mrs. Harry Carlisle, Mr. Carlisle and daughters, Marie and Patsy.

Mrs. Reynolds Sipple is a patient in the Kent General Hospital, Dover.

Marjorie Myers of Greensboro, spent the weekend with her grandparents, Mr. and Mrs. Gillis Brittingham.

Mr. and Mrs. George Godwin of Leonardtown, Md. were Sunday guests of his mother, Mrs. Lou Godwin.

M/Sgt. and Mrs. Andrew Billie of Dover were Sunday visitors of Mr. and Mrs. O. B. McGinness and family.

Mr. and Mrs. Jodie Alcorn and son, Bob of Wilmington, were Mother's Day visitors of Mrs. Alcorn's parents, Mr. and Mrs. Howard Blades.

Mrs. Marie Sipple is convalescing at her home after being a patient in the Kent General Hospital, Dover.

Rev. John Henton, vicar of St. Thomas's in Exeter, England played the Dame in a pantomime he wrote.

Lions Club Notes

Lt. Gov. Dave Buckson was guest speaker at the regular dinner meeting of the Harrington Lions Club on Monday evening. He was introduced by Lion Curtis Melvin of the local club.

Mr. Buckson spoke briefly on racing, politics, and his early days at the Harrington Fair. His main topic was zoning as it might affect Kent and Sussex counties with industrial growth in the next few years. He said that Harrington would be fortunate in getting the type of industry that the Trane Co. represents.

In later discussion, it was felt that a greater local interest in zoning regulations would result in laws that could be lived with in the future. This would be preferred to having people away from our community make its zoning laws. No official action either approving or disapproving zoning was made by the club.

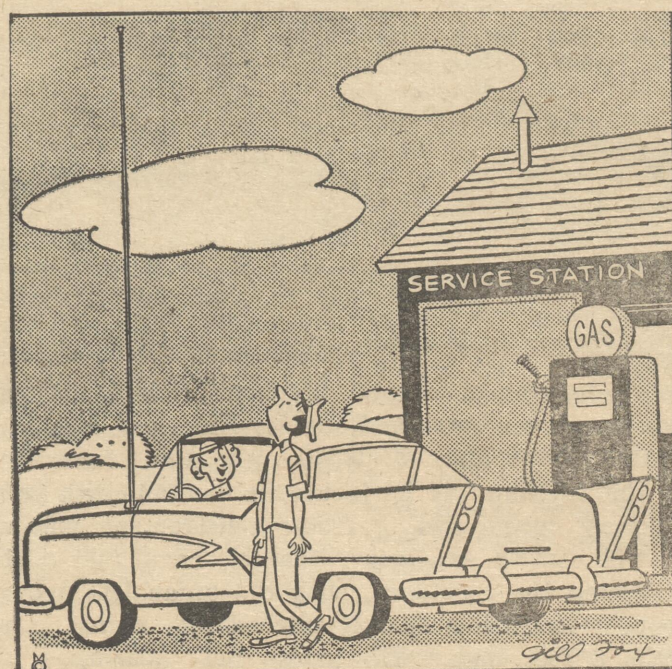
Lions Francis Weyant and Paul Goeppel of the Dover Lions Club announced the candidacy of Lion Edward J. Hill for the district Governor of District 22-D, Delaware for the coming year. This will be decided at the Lions' convention.

In the attendance contest the Purple Comets of Lion Al Price

pulled ahead of the Gold Stars of Lion Burt Satterfield by five points. This contest will last until the last dinner meeting in June.

Election of officers will be May 26 and the annual Ladies Night June 9.

"Israel Pavilion" will house that country's large exhibit at the 1958 Brussels International Fair in Belgium.



I'M CRAZY ABOUT MUSIC FROM THE ORIENT...

While we're not musicians, we do a lot of tuning-up... motors, that is! And after a precision tune-up here, your motor will purr with power in a way that will make sweet music to your ears. You'll get more mileage per gallon of gas, too. Drive in soon.

ANNOUNCEMENT

I wish to announce my candidacy for election as LEVY COURT COMMISSIONER For the SECOND LEVY COURT DISTRICT Consisting of the Third, Fourth, Sixth, and Ninth Representative Districts of Kent County. Subject to the wishes of the voters in the Democratic Primary. The support of all Democratic voters will be greatly appreciated.

HAROLD DAWSON SHULTIES

EASY ON THE FEET

EASY ON THE EYE

BALL BAND TENNIS SHOES

SUMMERETTE PLAY SHOES

BALL BAND — The Favorite of Generations

JACOBS STORE

Phone 8316

Harrington, Del.

INTERSECTION SERVICE STATION

Phone 3700

U.S. 13

Harrington, Del.

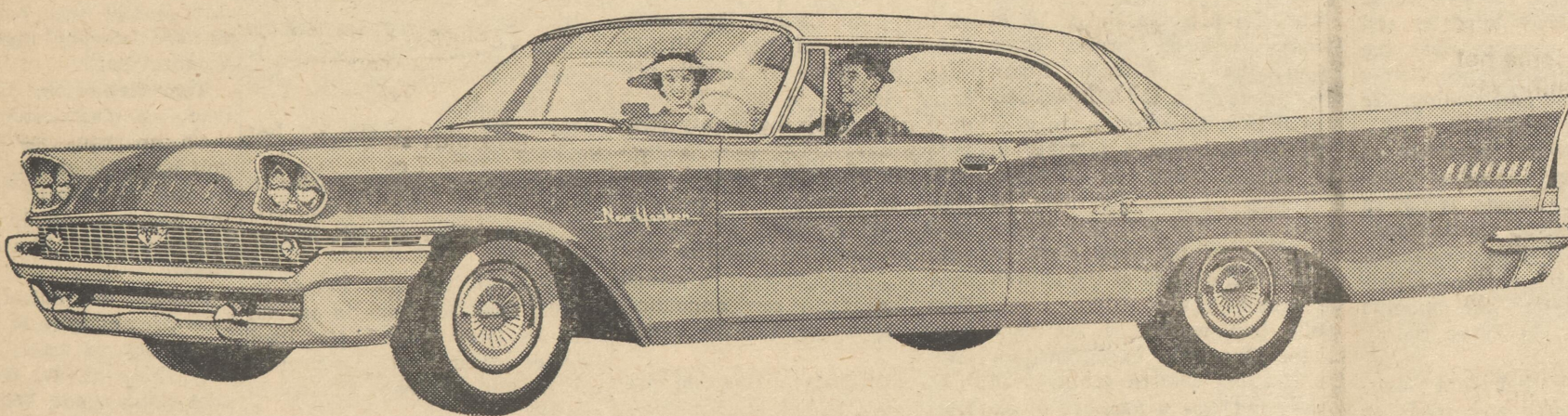
COMMERCIAL PRINTING

Have Been Doing It For 36 Years... Most Weekly Newspapers Usually Do Commercial Printing... It Oftentimes Means the Difference Between Oleo or Butter on Their Bread... On Occasions People Have Said, "We Didn't Think You Could Do This Job, So We Let the Whoozit People Do It... Unless You Are An Expert on Printing, Let Us Decide What We Can Do... If You Are An Expert, Come In: Maybe We Have a Job For You... See Us For a Price On Wedding Invitations - Announcements - Tickets - Salesbooks - Envelopes - Chances - Sale Bills - Multiple - Forms Snap - Easy Sets - Brochures - Booklets - Business Cards - Letterheads - Statements or Bill heads - Programs - Circulars - Direct - Mail Material.

If You Need Printing, Buy It Now and, For Economy, Buy In The Largest Quantity Possible - Certain Types and Colors of Paper Are Hard To Get and Are Getting Scarcer All The Time. Get Yours While The Getting Is Good.

THE MIGHTY CHRYSLER

makes driving exciting all over again



And it's exciting to know that this Chrysler averaged 21.02 miles per gallon to top all other cars in this year's Mobilgas Economy Run!

Here she is—ready to ride—the power-packed package that puts excitement back behind the wheel.

Feel the confident way this Chrysler takes the tightest turn—the comfortable way she smooths the roughest road. Discover how she eases to a sure, safe, certain stop.

And what a satisfying feeling it is to know

that every mile you drive, you're saving money in a Chrysler. Chrysler rolled up more miles per gallon than any other car—even beat out the smallest, lightest entries in the 1958 Mobilgas Economy Run!

But the most exciting news of all is how easy it is to own a Mighty Chrysler. Find out for yourself at your Chrysler dealer's.

THE MIGHTY CHRYSLER... styled to excite... engineered to endure... priced to please... See it at

HALL'S SERVICE CENTER

PHONE 3296

U. S. ROUTE 13

HARRINGTON, DEL.

The Harrington Journal



**Greenwood**

Claus Strom of Seaford and Mr. Sites of Washington, D. C., were Tuesday visitors at the Jacob Hatfields.

Mrs. Herbert Fox and children of Newark were Sunday visitors at the home of Mr. and Mrs. Allison Davis. The Misses Joyce and Charlotte Miller and Master J. D. Miller of Seaford were Sunday afternoon callers.

Mr. and Mrs. Allison Davis and Gary were Sunday night supper guests of Mr. and Mrs. Joe Dennis, Jr., after the Dennises returned from Rehoboth.

Mrs. Lionel Shockley and daughter, Donita, of Milford were Friday morning callers at the home of Mrs. Allison Davis. In the afternoon they called on Mrs. Joe Dennis, Jr.

Thursday dinner guests of Mr. and Mrs. Medford Calhoun were Mrs. Pearl Hill of Fruitland, Md. and son, Major Earl Hill, Jr. and wife, Major Hill and his wife are leaving Tuesday for Germany to be gone for three years.

Mr. and Mrs. Dorsey Hudson of Viola were Saturday dinner guests of the Calhouns, and Mr. and Mrs. Millard Calhoun and children of Newark were Saturday evening guests. Mrs. Hazel Zych was a Friday caller at the Calhouns and Mrs. Helen Warner of Dover was a Sunday afternoon guest.

Mrs. Howard Calhoun received the lovely cysanthemum plant in church for being the oldest mother and Mrs. Kenneth Williamson had the honor of being the youngest mother. The plants were donated by the Sunshine Class of Greenwood Methodist Church.

Mr. and Mrs. Robert Shortall and sons of New Castle spent Mother's Day with Mr. and Mrs. Edgar English.

Among those attending the Jefferson-Jackson Dinner Thursday in the Armory in Wilmington were: Mr. and Mrs. Edgar English, T. P. Rust, Mr. and Mrs. Lee Coulter, Mr. and Mrs. Roy Smith and grandson, Jimmy Smith, H. W. Cannon, Clay Johnson, George Smith and Mrs. Marie Dickerson.

Mr. and Mrs. Raymond Vincent and Mr. and Mrs. George Vincent of Greenwood and Farmington, respectively, were Monday dinner guests of Mr. and Mrs. Conrad Faulkner and daughter, Beverly, of Wilmington. They attended the funeral of Mrs. Ola Whitcomb, sister of Mrs. George Vincent and aunt of Raymond Vincent. Little Beverly Vincent was a guest of her grandmother Callaway for the day.

**Asbury Methodist Church Notes**

Church School 10 o'clock, Howard Wagner, superintendent. God's People Tested is the theme of the lesson in the adult classes. You will find a class for every age group and a friendly teacher to greet you.

There will be no morning worship due to the annual conference.

Evening worship 7:30 with the Chancel Choir singing the anthem "Where Jesus Lives." We will sing your favorite hymns and you may take part in the question and answer period.

The Ever Ready Class will meet Monday evening at 7:30 in their class room.

The Booster Class will meet Tuesday evening at 8 o'clock. The Crusader, Chancel and Cathedral Choirs will meet for rehearsal Thursday at 3:30, 6:30 and 7:45 o'clock, and the Cherub Choir will meet Friday afternoon at 3:30.

The Peninsula Annual Conference of the Methodist Church will meet Thursday morning at 9 o'clock in St. Paul's Methodist Church in Wilmington. The session will begin with Holy Communion. The conference will conclude with the reading of the appointments Sunday afternoon.

**"I AM BUYING MY LP-GAS AT METER RATES!"**

**"I PAY ONLY FOR THE GAS I USE AND I PAY FOR IT AFTER USE, NOT BEFORE!"**

METER ECONOMY AND CONVENIENCE CAN BE YOURS

People everywhere are now installing Rockwell LP-gas meters for better service and operating economy. Why not?

ASK US TO INSTALL A ROCKWELL LP-GAS METER IN YOUR HOME  
THE MODERN WAY TO BUY LP-GAS — THE MODERN FUEL FOR RURAL AMERICA

**WHEELER'S**  
Phone Harrington 3541

**Delaware Food Market Report**

Right now is the between season for most fruits so that accounts for the high prices and relatively poor selection. Supplies are continuing generally small on most fruits, however, pineapple proves the exception. This fruit is coming in in big volume with prices reasonable. Here's a tip on pineapple for those of you who like fruit and gelatin combined - be sure to cook the fresh pineapple before you combine it with gelatin, otherwise the gelatin will never congeal because of the acid in the fresh pineapple. Don't cook it for a long time - simply bring the pineapple and sugar to a boil.

There is plenty of outdoor rhubarb and prices are reasonable. This particular fruit can be frozen easily, so for those of you who have home freezers and like this fruit, freeze it now while it is in season. The cold rains have delayed the strawberry season. Prices remain high and quality is variable. However, shipments are expected to increase soon.

Local and New Jersey asparagus is plentiful. The peak of the season has been delayed also by the unfavorable weather. When you are buying this vegetable this weekend, try to get bunches or stalks as free from dirt and sand as possible. It may be necessary to take a vegetable brush and "scrub" the bud end before cooking. With all the recent hard rains sand has been washed into much of the asparagus crop.

Eggplant is in better supply, averaging 23 cents a lb. Green peas are arriving in higher quantity and prices have dropped. Sweet corn continues to be a headliner on the good buy list again this weekend. The quality and prices for the most part are excellent. Look for weekend specials on this vegetable, since the peak of the shipments from Florida is expected this week. Freshness is maintained by pre-cooling devices. That's why corn tastes extra good this year.

The only thing I can say about meat is that prices are HIGH. It seems more and more hamburger, frankfurters, canned meat, cold cuts and sausage are being sold each day.

American firs are among those bidding on construction of a vehicular tunnel at Caracas, Venezuela, leading to the coast.

Portugal is preparing in Lisbon, to create investment banks in order to provide better facilities for medium and long-term credit.

Population of England and Wales increased 240,000 in the year ended June 30, 1957, to total 44,907, London estimates.

**Houston**

Sunday School at 10 a.m. Robert H. Yerkes Sr. general supt.; Alvin Brown of the Junior Department, and Mrs. Charles Pearson, Supt. of the Cradle Roll.

Due to the session of the annual conference there will be no worship service Sunday. The Sunday School will be held at the usual time. Worship services will be resumed Sunday, May 25.

The annual session of the Peninsula convenes in St. Paul's Methodist Church, Wilmington. The lay member of the conference is J. Willis Clifton. Alvin O. Brown is the alternate. The conference will close with the reading of the appointments Sunday afternoon.

The reception for our pastor and his wife, will be held in the Fire Hall Saturday evening, May 24 beginning at 8 p.m.

The members and people of the church were surprised Sunday morning when presented with a check for \$250 from Peninsula Methodist Church, Wilmington. A letter was read and the check presented by Mrs. Jonathan Clifton, a member of Peninsula Church. The offering was taken Easter Morning and presented to Houston for the building. The Rev. Spence, pastor of Peninsula Church and the Rev. Kirwan, pastor of Houston Church, were colleagues.

Mrs. William Biggs is very ill in the Milford Memorial Hospital where she was taken Friday and her condition shows very little improvement at this time.

Mrs. Ruth Sapp, Mrs. Grace Manlove and Mrs. John Forrest attended a meeting of the Captain Jonathan Caldwell Chapter, D.A.R., in the Milford Century Club building Friday evening. The program was American Music and was arranged by Mrs. James Homan.

Mrs. James Smack, Miss Bertha Eilers, Mr. and Mrs. Norman Walls of Harrington, Mrs. Linwood Donovan, Bob and Elizabeth Walls of Greenwood, spent some time quite recently with Mr. and Mrs. Harry Beckerad in Baltimore.

Mr. and Mrs. Oley F. Sapp and Mr. and Mrs. C. Walter Wharton, spent Sunday afternoon in Salisbury.

Mr. and Mrs. Clinton Marvel had as dinner guests Sunday, Mr. and Mrs. Albert Legar of near Millington, Md.

Miss Eva Watson is making her home with the L. Paul Greenlees on Shawnee Road near Milford.

Miss Grace Sharp of Wilmington and mother, Mrs. Annie Sharp of Harrington were Sunday guests of Mr. and Mrs. George B. Thistlewood and family.

The condition of George Simpson who is quite ill does not show very much improvement.

**St. Stephen's Episcopal Church Notes**

Our Young Churchmen's Sunday, May 11, a number of young people at St. Stephen's took part in the 11 o'clock service of morning prayer. A combined choir, made up of Junior and Senior members, marched in, to the processional, "May Jesus Christ be praised!"

Bill Thompson, a member of the Acolyte Guild, read the opening sentences, versicles, and psalm for Rogation Sunday. Billy McColley, also an acolyte, read the Old Testament and New Testament Lessons. Robert Quillen, acolyte director, completed the service with the collect, prayers, and grace.

John Winkler and Jocko Chamberlain, two members of the church school primary department, took up the offering.

Other acolytes who assisted in the service were Robert Greer, John Porter, Albert Lee Ratledge and William Carter, and Ronny Porter.

Besides commemorating Young Churchmen's Sunday, St. Stephen's celebrated two other events May 11. This date is also known as Rogation Sunday on our church calendar—the first of four asking days, when church members ask God's blessing on all crops and all those products of the earth upon which life depends.

As Mother's Day, also, there was a wish expressed for the continued health and happiness of all mothers, and a prayer that mothers may remain steadfast in God's love and service.

Flowers on the altar Sunday were given to the Glory of God and in loving memory of William T. Keith by Mr. and Mrs. John R. Symonds of Richardson Park, Wilmington.

Flowers on the organ were given to the Glory of God and in loving memory of Annie S. Morain by her sister, Amy L. Stone.

Coffee hour hostesses Sunday were Mrs. Robert McNally and Miss Verne Northart, of Connecticut Avenue, Washington, D. C.

Dinner guests Sunday at the home of Mrs. Lillian Rice and James Hoffman, were the Rev. and Mrs. Victor A. Kusik, of Bridgeville and the Rev. John R. Symonds, Jr.

A new cook book has been released, sponsored by St. Stephen's Women's Auxiliary, and entitled "The Best in Cooking in Harrington." It contains the most prized recipes of members of the church and their friends in Harrington and vicinity.

There are hors d'oeuvres, pickles, relishes, salads, vegetables,

Mrs. Stella Sapp had her children and grandchildren home for Mother's Day.

soups, meats, fish, poultry, bread, rolls, cookies cake, pastry, candy, jelly, preserves etc. There are also household hints, measurements, menus amounts to serve twenty-five, and a recipe on "how to preserve a husband."

Some interesting recipes are "rollklops," "Italian baked Lagna," "Banbury Tarts," Scripture cake," strudel," "Nantucket gingerbread," "tongue with gingersnap sauce," "tuna Neapolitan," "sugar curing hams," "boiled strogemuff," "sukiyaki," "beef corn pone," "Mother Eliza Derickson home baked beans."

Ladies serving on the altar guild for the month of May are Mesdames Walter Winkler, Clyde Perry, Herbert Chamberlain, and Miss Ann Perry.

Announcement was made Sunday by the vicar, that a son, Robert Allen had been born Friday, May 9, to Harry and Ruth Reed of Lewes, Delaware. The grandparents are Mr. and Mrs. Clarence Reed of Harrington.

The May meeting of St. Stephen's Women's Auxiliary will be held Tuesday evening, May 20, at the Parish House.

New officers of the Women's Auxiliary will be installed at the 11 o'clock service next Sunday.

Two new sets of vestments given by Mrs. Wright Pearsall in memory of her husband, Wright Pearsall, were received and blessed by the Rev. John R. Symonds, Jr., last Sunday at morning prayer. One set is purple, lined with gold silk; the other, white, lined with red silk. Each set consists of chasuble, maniple, stole, burse, and veil.

Members of St. Stephen's Acolyte Guild will assemble at the Parish House Saturday, 10 a.m. to go to Wilmington, where they will meet boys, from other churches in the diocese, and travel

by bus to Connie Mack Stadium, in Philadelphia. As guests of the diocese, they will be witnesses of an interesting event—a major league ball game. Travel to and from Philadelphia will be provided free but lunches are to be taken by each person going along.

The Rt. Rev. J. Brooke Mosley, Bishop of Delaware, will take part in the ceremony, May 15, elevating the Very Rev. James A. Pike, dean of the Cathedral Church of St. John the Divine, New York City, to coadjutor bishop of the Episcopal of California. Bishop Mosley will leave Delaware immediately after the diocesan convention at Greenville this week and will fly back home on Friday in order to accompany the acolytes to Philadelphia.

Thursday, Holy Thursday, or Ascension Day, there will be Holy Communion at 10 a.m., also at 5:15 p. m.

Messrs. James Hoffman and George Johnson were ushers last Sunday.

Robert McNally gladly took the place of the Church School superintendent last Sunday, in the absence of George A. Thompson. Miss Carol McNally and Billy McColley, represented St. Stephen's at the Young Churchmen's Convention, Dover, Saturday. The group voted on new officers, also delegates to the Youth Convention to be held next spring and elected officers and delegates to the Youth Commission which is the governing group between Convention. The Rev. Canon Brewster Yale Beach was in charge of all arrangements.

Acolytes who served at Early to go to Wilmington, where they will meet boys, from other churches in the diocese, and travel

McNally. Events and services for this week remaining and next are as follows: Thursday, Ascension Day with Holy Communion at 10 a.m. and at 5:15 p.m.; Senior Choir rehearsal at 8 p.m.; Saturday, 10 a.m., Acolytes' trip to Philadelphia; Sunday, May 18, Holy Communion, 8 a.m., Church School; 9:30 a.m., Morning Prayer and installation of Women's Auxiliary officers for 1958 - 59; 12:15, coffee hour; 5 p.m., Junior Teens; 7 p.m. Evening Prayer; Monday, 7 p.m. Junior choir rehearsal; Tuesday, 10 a.m., Holy Communion

and Holy Unction; Wednesday, 8 p.m., Healing service at Seaford. Date to remember: Junior Choir rummage sale, Friday and Saturday, May 23 and 24, Gaines Alley.

To grow bigger and more useful, banks in India must establish more branches, "get into the skin of the people" and serve them, Finance Minister T. T. Krishna-machari said in Madras.

A Wellington, New Zealand, firm wants to produce a line of American greeting cards.

**"THE FOLKS THAT I HAVE KNOWN"**

We have a small number of pamphlets of poems of the above title, written by the late J. Harvey Burgess, late owner of The Harrington Journal and self-styled "splitter of infinitives, mixer of metaphors, demon of the double negative, sorcerer of solecisms, perpetrator of the world's poorest poetry."

We presume he was also a dangler of participles. There have been several requests for this booklet, priced at 25c, but we were unable to comply with them. Fortunately, however, we uncovered a limited supply of this valuable booklet recently while looking the effects of the estate.

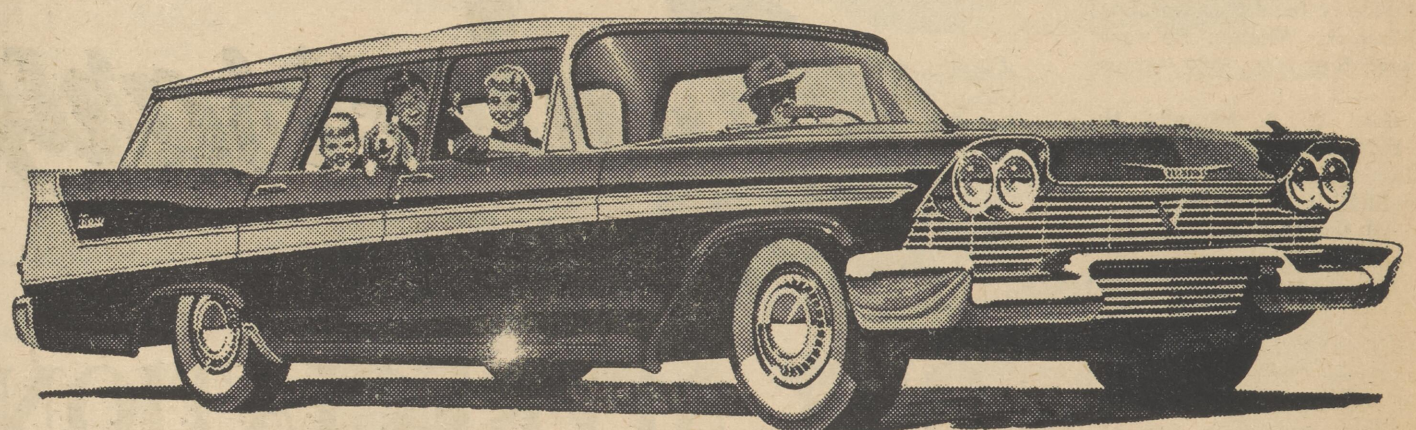
We also have a number of pamphlets, "Hosses, Hosses, Hosses" written by Mr. Burgess, and depicting Harrington's harness-racing life. The price is 25c.

When the above-named pamphlets have been sold there will be no reprints.

**THE HARRINGTON JOURNAL**

Phones 3206 and 3209 Harrington, Del.

**ANNOUNCEMENT**  
I wish to announce my candidacy for re-election as **RECORDER OF DEEDS**  
Subject to the Wishes of the Voters in the Democratic Primary. The support of all Democratic Voters will be greatly appreciated.  
**ROY J. HONEY**



Here's why Plymouth, America's favorite family wagon, is

**TODAY'S BEST BUY-TOMORROW'S BEST TRADE**

You get more wagon for your money today...more money for your wagon tomorrow!

**FIVE BIG REASONS WHY YOUR NEXT WAGON SHOULD BE A PLYMOUTH**

Any way you look at it, you can't find a better wagon buy than Plymouth! So big—it carries more, does more, provides more room for family fun. So beautiful—just look at those long, years-ahead lines. So economical—Plymouth is priced right in the low-price "3", yet you can't buy a bigger wagon at any price. And further proof: Plymouth beat every car in the low-price class in the 1958 Mobilgas Economy Run; Plymouth's second consecutive victory!

- 1. Biggest of the low-price "3".** Big as wagons costing thousands of dollars more. You can't buy a bigger wagon at any price!
- 2. Holds so much more than the "other two".** Over 7 cu. ft. extra passenger and cargo space. Optional "secret" luggage compartment available in 6-passenger models.
- 3. Rear-facing 3rd seat.** Folds flush into floor. You don't store it outside when it's not in use. Easy to enter, has convenient back step.
- 4. Disappearing rear window.** Rolls down into the one-piece tailgate. Doesn't jut out. Only on Plymouth wagons in the low-price "3".
- 5. Torsion-Aire Ride at no extra cost.** Only Plymouth has it in the low-price "3". No sideways on turns...no nose-dive on stops.

Get the biggest wagonload of value at a price far lower than you would expect. See your Plymouth dealer today.

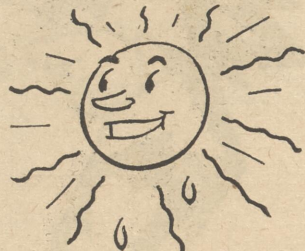
They don't come any bigger than **Plymouth** station wagons

Complete the circle of safety...check your car...check your driving...check accidents

**HALL'S SERVICE CENTER**

PHONE 3296 U. S. ROUTE 13 HARRINGTON, DEL.

Does Warm Weather



mean

**Cold Water for You?**



You can enjoy year round hot water — automatically with a Suburban Gas Water Heater.

Maybe your heating plant is geared to give you some hot water when the heating season is over, but if you are like most people who have these old-fashioned systems, you get enough for laundry, but you're short for dishes...or the kiddies get a hot bath, but you get a cold one!

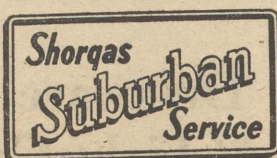
End these annoying cold water problems with a modern, automatic, glass-lined, Suburban Gas Water Heater. Feel luxurious with all of the hot water you need for every personal and household use — economically!

BUY OR RENT A SUBURBAN GAS WATER HEATER  
BUY... on easy credit terms  
RENT a 30-gallon Water Heater for only \$1.95 a month

**SUBURBAN PROPANE GAS CORPORATION**

Walker Rd., Dover, Del. - Dover 4748

The Gas Company Beyond The Gas Mains





**Property Transfers**

John Norman & Myrtle B. Cabbage, Dover to Bertha C. & John N. Cabbage, Jr., Camden, in E. Dover Hund. lying on west side of Old State Hwy. U. S. No. 13, from Dover to Camden Rd. on S. Gov's Ave., ext. 10,150 sq. ft. \$25.

A. Eliz. & William Downing, Penna. to James & Phyllis E. Driggins, N. Murderkill Hund. in Wyoming, frontage on Stevens & Apple Sts. in Sub-div. of James F. Allee, Jr., \$200.

Wilbert Swiggett, Dover to Wilmer F. & Mable F. Wilson, Dover, in N. Murderkill Hund. lying on east side of pub. rd. leading from Camden to Voshells Mill adj. Ben. J. Mosley. 150 ft. \$2600.

John H. & Cora A. Cahall, Felton to Doris Ann & Wm. J. Duerr Felton, in C. Murderkill Hund. east of north bound lane of U.S. Rte. No. 13 9000 sq. ft. \$1.

Luther & Laura Williamson, Milford to Frank John & Dora May Elton, Milford, on west side of st. hwy. leading from Milford to Canterbury 3 lots on plot of lands of J. Causey Hill. \$1 & other consid.

John Anderson, New Castle to Fred Anderson, New Castle, in Milford Hund., along south shore of Murderkill River adj. lands of F. A. Webb, Sr., & John Peterson. Be contents what they may. \$5.

Edgar & Madaline Buchanan, Dover to Neil & Geraldine Graf, Dover, lot in Shady Lane Develop. in N. Murderkill Hund. \$3000 stamps \$7.15.

Mary Hinsley, Dover to Edward N. & Catherine G. Lomar, Camden, on east side of Main St. adj. lands of Helen Sapoff & Bessie Jensen. 7500 sq. ft. more or less. \$6500 stamps \$7.15.

Irxin L. & Ursula M. Boss, Dover to Beverly Sue & Clevis M. Leggett, Jr., Dover in Morris Estates 1 lot. \$10.

Eleanor Davis, Magnolia to James B. & Marjorie McKnight Clements, Dover in Eastover Hills Develop. 1 lot in northerly portion. \$1.

Edward H. & Hattie H. Reichelt, Dover to John L. & Betty Jean Olliver, Dover in duPont Manor Develop. 2 lots 20,000 sq. ft. more or less. \$325 stamps .55 cts.

John Fletcher Truax, etal, Smyrna to Samuel C. & Lee H. Deakne, Smyrna, northeast of duPont Blvd & northwest side of Commerce St. adj. W. A. Stokesbury. \$10.

William L. & Beatrice Whalen, Clayton to Joseph H. & Clara A. Jones, Ridgely, Md. in Clayton on east side of Reed St. adj. lands of William L. Whalen. Be contents what they may. \$350 stamps .55 cts.

Crawford A. & Vanlette N. Lane, Baltimore, Md. to George & Hilda Rutter, Dover in E. Dover Hund. lying on north side of pub. rd. leading from Pearsons Cor. to Pickering Beach adj. Chas. Davis Plot. 10,000 sq. ft. \$200.

Alberta C. Warren, Dover to Young Mens Christian Association of Dover, Delaware in E. Dover Hund. on north side of Kings Hwy. leading from Dover Electric Plant to U. S. Rte. No. 13 adj. Mrs. John Houston & Henry Pancoast, Jr., 5 acres. \$18,000.

Stanley C. & Ardella M. Little, Little Creek to Walter L. & Jane S. Barsden, Dover in Little Creek on east side of Main St. adj. Ollie Short & Frank Carrow. 19-7 perches. \$7600.

Elmer F. & Arbana Seeney, Kenton Hund. to John N. & Rose D. Byler, Dover, in Kenton Hund. 2 parcels of Woodland. Parcel No. 1 - 10.4 acres Parcel No. 2 - 10 acres - \$360.

Suburban Propane Ohio Company, a corporation of the State of Delaware to Suburban Propane Gas Corporation, a corporation of State of New Jersey, in east Dover Hund. north of Dover adj. lands of Eastern Shore Gas Corp. & Penna. R. R. Co., & lands hereby conveyed. 12,612 sq. ft. more or less. \$1.

Brady V. & Amelia Shahan, N. Murderkill Hund. to Harry Alden & Doris Hutchins, Wyoming 2 tracts of land lying on north side of gravel rd. known as Brady's Lane. Tract No. 1 - 4,809 sq. ft. Tract No. 2 - 6,055.5 sq. ft. \$300.

**Armed Forces Notes**

M/Sgt. Thomas R. Melvin, 42, son of Mrs. Ella Melvin, Felton, Del., recently left the U.S. on a concert tour of the Far East with the Army Field Band and Soldier's Chorus.

Sergeant Melvin, a section leader in the band, will participate in concerts for civilian and military audiences in Hawaii, Japan, Korea and Okinawa. He is scheduled to return to Fort George G. Meade, Md., on June 16.

Melvin, a graduate of Felton High School, entered the Army in 1935.

**Wallace Caulk Star Farmer at Del. FFA Assembly**

Rodney Caulk of Caesar Rodney was elected president of the Delaware State Future Farmers of America at its 28th convention held at Harrington High School Thursday, May 8. Other officers elected were as follows:

Emil Buffington of Newark, vice-president from New Castle County; Bill Davis of Smyrna, vice-president from Kent County; Carl Vincent of Lewes, vice president of eastern Sussex County; Dale Dukes of Laurel, vice president of western Sussex County; Tom Carter of Newark, treasurer; Wallace Caulk, Jr., of Felton, secretary; Carl Pierce of Newark, reporter; William Robb from Caesar Rodney, sentinel; Elmer O'Day of Felton, Presley Moore of Smyrna, and Alfred Moor, Jr., of Smyrna, members of the executive committee.

Fourteen Delaware Diamond Farmers, outstanding boys in FFA work, were honored. Wallace Caulk, Jr., of Felton was chosen the star farmer of this group. He received a check of \$200 from the National Future Farmers of American Foundation.

Young Caulk has had three years of agriculture and lives with his parents who own a 270 acre combination farm and dairy. He has held FFA offices up to vice-president, president of sophomore and junior classes, student council, grange, director of Chesapeake and Delaware Ayer-shire Association, and has won many dairy prizes within and outside the state. He also won many FFA awards including county public speaking.

The other candidates were as follows: Dale Dukes and Kenneth Vigue of Laurel; John Hamstead of Bridgeville; Richard Sapp and Roger Hendricks of Harrington; Donald Davis of Smyrna, Gerald Evans of Selbyville, Cecil Pierce and William Carter of Newark, Edward Moore of Caesar Rodney, Morris Berzins of Lord Baltimore, and Charles Harding and Gene Huey of Milford.

Short talks were made by J.

**MRS. JACOB WROTEN**

Mrs. Sally Noble Wroten, 88, died at the home of her daughter, Mrs. Hestor Friedman, 5954 Tab-or Road, Philadelphia, Friday morning.

She was a native of Hickman Md., daughter of William and Hestor Bartlett Noble and lived in Hickman until about six months ago when she went to Philadelphia to live. Her husband Jacob, died in 1936.

She was a member of Hickman Methodist Church. Funeral services were held there Tuesday at 2 p.m. in charge of the Rev. John Andersen. Interment was in Wesley Cemetery, Burrsville, Md.

She is survived by two sons, Charles V. Wroten, Philadelphia; Edgar, of Greenwood and the daughter with whom she lived. She also leaves five grandchildren and 11 great-grandchildren, and a sister, Mrs. Stephen Adams, of Harrington.

Boyer Funeral Home handled the funeral arrangements.

**Of Local Interest**

Mrs. Mildred J. Biederbeck of Riverside, N. J., spent the weekend with her mother, Mrs. Willard Jester of Hollandville.

C. Messner, superintendent of Harrington Schools, Dr. George R. Miller, State Superintendent of Public Instruction, Dr. R. W. Heim, assistant state superintendent of vocational education, and Walton Simpson, chairman of the donor committee of the Delaware FFA Foundation.

Leon Smith of Rome, N. Y., national vice-president of the Future Farmers of America, was the principle speaker and talked to the boys about activities in other states and the national association, and congratulated them on their outstanding achievements.

There were 125 delegates from 20 local chapters, members, and 27 guests attending the affair. Dinner was served by the Harrington School cafeteria staff.

At the present time the Delaware FFA Foundation has 112 business men contributing financially to the agricultural boys in Delaware.

**Caesar Rodney School Notes**

The Caesar Rodney Board of Education has reduced the property tax rate for next year from 40c to 35c and left unchanged the capitation rate of seven dollars.

Income from the trailer tax plus an increase in assessable real estate amounting to \$1,260,000 contributed to the tax rate drop of five cns.

The assessment list as prepared by T. Edgar Townsend, Sr., and W. Merritt Burke, Sr., shows a real estate total of \$12,885,000 with 4200 capitations. It is estimated that \$1500 will be received next year from the trailer tax.

During the next year the district will require \$32,600 to retire the bonds due and \$16,000 for interest. In addition, \$10,000 of local tax funds are budgeted for current expenses of the district. This year the district will also receive a total of \$40,000 in Federal aid on account of Dover Air Force Base related pupils.

The Board anticipates a reduction in this Federal aid next year for the Caesar Rodney and Star Hill Schools due to the opening of the base housing development and the establishment of an on-base school in September 1958.

The on-base school will be operated by the Caesar Rodney district under a contract.

**Births**

- BEEBE HOSPITAL, LEWES**
- May 4 Mr. and Mrs. Robert E. Dorman of Frankford, girl
- May 6 Mr. and Mrs. Robert W. Lawson, of Milton, boy
- May 7 Mr. and Mrs. Edward P. Taylor, of Selbyville, boy
- May 8 Mr. and Mrs. Carlton W. McDonald, Lewes, boy
- May 9 Mr. and Mrs. Harry R. Reed, Lewes, boy
- Mr. and Mrs. Clifford E. Johnson, Lewes, boy.

**Kent County 4-H Round-Up**

Fun, laughs, and pretty girls will be found tonight at the Capital Grange Hall at 8 p.m. 4-Hers from fourteen county clubs will be participating in an exciting, competitive program. Variety group acts, instrumental and vocal solos and fashion hobbies will be presented. Interspersed throughout will be entertaining and inspirational talks by members competing in the public speaking contest. The evening program is under the sponsorship of the Kent County Links and the Kent County Junior Council.

Fred Grampp, Junior Council president, will introduce the public speaking contestants while John Clark, Junior Council member will present the talent acts. Joan Dempsey, Dover, will narrate the dress revue. Becky Clendaniel, dress revue chairman, reports that swim suits to formals will be modeled. There will be about sixty 4-H members participating.

Local club leaders have been busy working with their members. Mrs. Clifton Hufnal, Mrs. Fred Wiebel, Mrs. George Wicks and Mrs. Fred Martin will assist behind the scenes with the dress revue.

Judges for the evening will be: Miss Lois Korslund, Clothing Specialist; Jim Baker, Sussex 4-H Club Agent; Miss Fran Shoffner, Sussex Home Demonstration Agent; Mrs. Wilmer Aist, and John Masters, of Radio Station WDOV.

Participating are: Joan Dempsey, Helen Grampp, Arlene Sinclair, Carol Sinclair, Cathy Sinclair, Joyce Short, Joanne Haines, John Grampp, Bob Burge, Rodney Techmeyer, Bill Webber, Howard Clendaniel, Cynthia Brasch, Janet Clendaniel, Nancy Pearson, Josephine Moore, Louise Carter, all of Dover; Fred Wiebel, Allen Metheny, Lois Wiebel, Marlene Konshak, Barbara Buzenski, all of Hartly; Janie Cox, Emil Gerardi, Wayne Woodall, Jeannie Martin, Beatrice Lyons, all of Harrington; Lois Dill of Goldsboro; John Thomas, Thelma Thomas, Norma Jean Edwards, Fred Wiebel, Eu-

gene Thomas, all of Marydel; Barbara Ross, Nancy Goldsborough, George Wicks, Judy Street, Carol Ann Brown, Madeleine Wicks, Mary Grace Justis, all of Smyrna; Paul Purcell, Shirley Hayes, Chris Jump, Gretchel Marvel, Tommy Parvis, Raymond Marvel, Sara Lee Webb, Connie Parvis, Susan Benson, all of Houston; Wayne Currey, Dorothy Moore, Mary Ann Moore, all of Wyoming; Walter Outten, Greenwood, and Gail Gilbert of Kenton.

**Proper Lawn Mowing Important**

Proper mowing is important in encouraging the growth of permanent lawn grasses and discouraging undesirable weeds says George Vapaa, county agricultural agent.

Whatever the height of your lawn, frequent mowing is needed to avoid cutting off too much top at one time, the agent says. Too heavy a cut weakens grass plants, slowing growth. If a small amount of topgrowth is removed at one time, the clippings can be left to add organic mat-

ter to the soil. Heavy clippings should be removed or they will smother the grass.

Cool-season grasses such as bluegrass and fescues should never be mowed to less than one and one-half inches high. Closer mowing especially in hot weather, will weaken or even kill these grasses, opening the way for invasion by weeds and crabgrass, Mr. Vapaa explains. Crabgrass needs lots of sun and its germination and growth are slowed by taller-growing permanent grasses.

All mowers can be adjusted for height of cut, but the means of adjustment depends on the type of mower, the agent says. On most rotary mowers, height of cut is fixed by adjusting the

wheels on the mower frame. Adjustment of the roller on reel-type mowers usually determines the height of cut. Adjustments should always be made and checked on a flat surface—a concrete walk or floor.

It makes no difference what kind of a mower you use—hand, power, reel, or rotary—but it should be sharp enough to cut your grass cleanly without bruising and tearing the leaves, the county agent advises. Rotary mower blades require frequent sharpening, which can be done with a steel file. On reel-type mowers, both the cutting edge of the bedknife and the reel blades should be sharp, with the reel set close enough against the bedknife to assure a clean cut.

**NOW OPEN**  
**FAIRVIEW INN**  
**FAMILY STYLE DINNERS**  
Served from 3 to 7 p.m. Daily  
**BOWERS BEACH, DEL.**  
**MRS. ETHEL SAVAGE HELLER, Prop.**  
Phone 5-9889 — 5-5621 Frederica, Del.

**CHOOSE YOUR ENDURING TRIBUTE NOW FOR ALL MEMORIAL DAYS**



Select your monument or marker now from the largest display on the Eastern Shore and be assured your tribute will be in place by Decoration Day.

**Wm. V. Sipple & Son**  
S. E. Front St. & Rehoboth Blvd.  
Milford, Delaware

**ROCK OF AGES**  
Look for this seal on your Rock of Ages monument or marker. It identifies all Rock of Ages monuments.  
**AUTHORIZED DEALER**

**RITE-WAY DAIRY EQUIPMENT**  
**SALES -- SERVICE -- PARTS**  
Featuring  
**The New Cow to Can Milker**  
**JOHN H. ANNETT & SONS**  
Rt. 36 (Milford-Greenwood Road)  
**HARRINGTON, DEL.** Phone 8095

*Our Tenth Anniversary*

**OUR APPRECIATION and HEARTFELT THANKS to the**

**Best Persons in the world, OUR CUSTOMERS, who have made it possible for us to observe our TENTH ANNIVERSARY.**

Harrington's Largest Mid-City Service Station Cordially Invites you to Bring in Your Car for Prompt and Efficient Service at Reasonable Prices.

**CITIES SERVICE**  
**GASOLINES, OILS, AND GREASES**

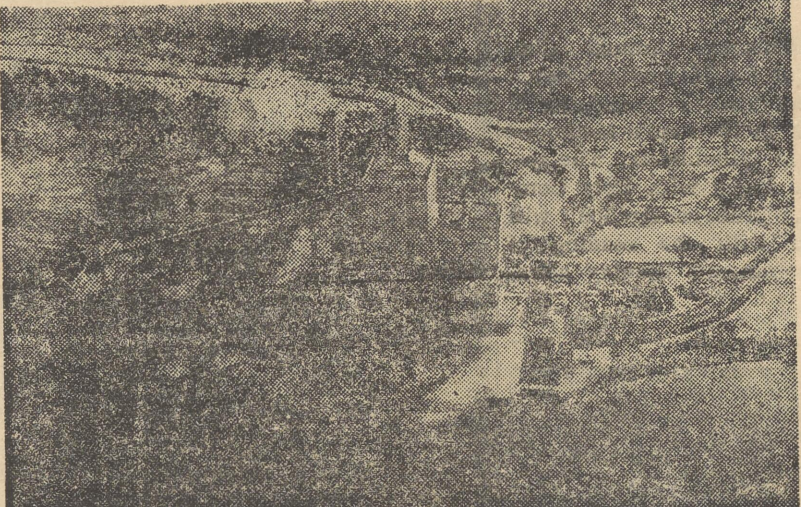
**Graham's Mid-City Service Station**  
GEORGE S. GRAHAM, Proprietor  
Phone 8380 Clark Street Harrington

**OPEN HOUSE**

*You're Invited*

Sunday, May 18, 1958  
12 noon to 4 p.m.

**NEW INDIAN RIVER POWER STATION**  
Between Millsboro & Dagsboro, Del.



Aerial View

This is your power plant. We want to show it to you.

Electricity produced here flows from one end of the Delmarva Peninsula to the other, providing electric power for your homes, farms, stores and industries.

The first giant turbogenerator now in service provides 85,000 kilowatts . . . a second unit of the same size is presently under construction and will be in service in the near future, keeping step with the progress and growth of the Delmarva Peninsula.

*Indian River Power Station towers 15 stories above a beautiful setting on Indian River. Like many other modern marvels, you should see it to appreciate it.*

**Delaware Power & Light Company** **Eastern Shore Public Service**  
Refreshments served



**Kent Home Doings**



RUTH L. ADAMS  
KENT COUNTY

**Home Demonstration Agent**  
A Canning Project School will be held May 20 and 26 at Capital Grange, Dover from 10 a.m. to 2 p.m. Miss Patricia Middleton, Home Management Specialist, University of Delaware, will conduct these classes. Seventeen Home Demonstration Club members throughout the county have enrolled. For their projects the members will receive a chair.  
**Register with Home Agent For Annual Course**  
Homemakers planning to attend the annual homemakers' short course at the University of Delaware were notified today to send registration forms only to the county home demonstration agent, Ruth Adams.  
The deadline for registering is May 29. The course will be held June 16 to 19.  
Describing the course briefly classes are being scheduled in water coloring, flower arrangement, children's books, Bible stories, and enameling jewelry. Leadership classes will be held in writing news stories, giving oral reports, and leading discussions. Experts are being invited to teach at class sessions.  
Speakers during the course will include Dean George M. Worri- low, University of Delaware School of Agriculture; Mrs. Allen Colburn, Newark; Mrs. Dustin Adams, Kent County home demonstration agent, and Miss Helen Strow, Federal Extension Service, Washington.  
Entertainment slated is the play "Auntie Mame" at the Brandywine Music Circus, a chicken barbecue, and a birthday party in observance of completion of 20 annual short courses.  
Homemakers staying at the university during the course will live in dormitories. Meals will be served in Kent Dining Hall. The fee for the course is \$12.85. Those wishing to see the play will be charged an additional \$2.25.  
Further details of the short course will be announced.  
**Timely Insect Control Tips**  
Several insect pests of ornamentals to control between May 15 and June 1 have been listed by entomologists at the University of Delaware.  
These insects are known to do much damage to homeground plantings, but can be killed with DDT or malathion. When DDT is suggested, mix one to two tablespoons of 50 per cent wettable powder per gallon of water. Four tablespoons of 25 per cent wettable malathion powder should be mixed in each gallon of water. The insects, some plants they attack, and the sprays recommended by the entomologists include:  
Mites—attack evergreens such as arborvitae, juniper and fire-thorn. Use malathion on these tiny sap-suckers. Repeat spray in 10 days.  
Lace bugs—damage azalea and rhododendron. Usually found on underside of leaves, where they feed. Control with DDT.  
Aphids—injure rose, azalea, other perennials. Usually found on new growing plant tips. Pests may be red or green. Use malathion.  
Leaf miners—found on box- wood and holly. Insect tunnels into leaves. Kill pests with two application of DDT, 10 days to two weeks apart.  
Elm leaf beetles—Kill these leaf-eaters with DDT.  
Pine shoot moths—pests destroy tips of shoots. Requires control after June 1. Spray six to nine times during May, June, and July. Use DDT every 10 to 14 days.  
**Wood Preservative Adds to Life Of Outdoor Furnishings**  
Homeowners sometimes invest considerable money and effort in furnishing yards with lawn furniture. If you are among them naturally you'd like to see the furniture last as long as possible.  
You can add years to the life of your wooden outdoor furnishings by treating with a wood preservative, suggests Ruth Adams, county home demonstration agent.  
A check by the agent with University of Delaware agricultural engineers resulted in recommendation of two preservatives which can easily be applied. The preservatives are pentachlorophenol, often referred to as "penta", and copper naphthenate.  
Both preservatives can be obtained in either concentrated or ready-to-use form at hardware stores, paint shops, or lumber yards. If a large quantity is required, it is less expensive to buy the concentrate and dilute it, as directed with diesel or fuel

**Property Transfers**

Beatrice E. & Albert B. Carter, Sr., Camden to Frederick F. & Doris R. Foust, Dover in A. B. Carter, Sr., Develop. \$300 stamps .55 cts.  
M. & H. Lumber Company, Harrington to Everett Hobbs, Harrington, in Mispillion Hund., lying along pub. rd. leading from Harrington to Brownsville adj. Layton & James Outten. 200 acres. \$2000.  
Joseph Earl Wyatt, Mispillion Hund. to Grace C. & Carroll Welch, Jr., Harrington, in Mispillion Hund. adj. lands of Ollin B. Davis. Be contents what they may. \$400 stamps .55cts.  
Theodore H. & Helen E. Jory, Greenwood to Roderick George & Amanda Wesley Holland, Harrington on south side of Liberty St., adj. Roy Porter & S. L. Sapp. 3240 sq. ft. \$4650.  
Gilbert F. & Barbara A. Hagen, Frederica to Francis T. & Laura Hutchinson, Frederica, lying on easterly side of st. hwy. leading from Frederica to Milford adj. John Darling & Clifford Coverdale. 17,200 sq. ft. \$8500 stamps \$9.35.  
Mary B. Maybee, Admin. D. B. N. Silas Todd Jenkins, Dover to Filmore G. Mullar, Dover in Milford Hund. 62 1/2 acres bounded by Isarel Townsend & James Davis & others. \$1.  
Harold B. & Bessie T. Hughes, Dover to James L. & Kathleen B. Melvin, Dover in E. Dover Hund. lying on westerly side of dirt rd. known as Acorn Lane leading from White Oak rd. to N. Little Creek Rd. 1 acre. \$10  
Dover Builders, Inc., to James T. McKinstry, Wilmington in Rodney Village adj. Webbs Lane. 11,919 acres. \$10.  
Dover Builders, Inc., to James Lee & Leona Crouse, Dover in E. Dover Hund. Rodney Village 1 lot. \$10 stamps 14.30.  
Walter W. Artis, Inc., Delaware to Harrington M. & Ione M. Biddle, Dover, in W. Dover lying westerly side of pub. rd. leading from Dover to Pearsons Cor. on st. hwy. leading to Dover & Hazletville Rd. adj. Walter U. Artis Inc., lot No. 2, 15,000 sq. ft. \$5 stamps \$1.10.

**Trinity Methodist Church Notes**

Our Intermediate Methodist Youth Fellowship meets this Friday and 6:30 - 7:30 p.m. Mrs. Cahles R. Cox has some good games, and Mrs. Jack Redden some good ideas for lessons and handwork, for this group. All young people are invited, ages 12, 13 and 14. Last week we had twelve present, boys and girls both.  
Sunday School assemblies next Sunday, May 18, at 10 a.m. as usual. Otherwise, there will be no church services throughout the day, because it is conference Sunday. The Peninsula annual conference meets at Wilmington, St. Paul's Methodist, from Thursday through Sunday. Trinity's lay member of the conference is Albert Thistlewood and reserve member is Ellwood Gruwell.  
Our Junior Choir rehearses Thursday, at 3:45 p.m. and also next Thursday, May 22. The Senior Choir, however, omits rehearsal this Thursday; it will rehearse as usual next Thursday.  
The W.S.C. Monday prayer meeting, led by Mrs. John Walls, is held at 10 in the church every week.  
Asbury unites with Trinity in observance of Memorial Sunday, May 25, at 11 a.m. Our guest at Trinity this year is the Harrington post of the American Legion and its Auxiliary. The services are to be held in Trinity Church.

**Soybeans, Sorghum: Good Corn Silage Substitute**

One of the best silage crop substitutes for corn is soybeans and sorghum, according to word received today by George Vapaa, county agricultural agent.  
Recommending the silage substitute was Prof. William H. Mitchell, agronomist at the University of Delaware. Prof. Mitchell said the yield from the combination may be 10 to 15 per cent less than from corn—but the nutrient value is about equal to that of good corn silage. If a good yield is expected, the soybeans and sorghum should be seeded by early June.  
Hay-type varieties of soybeans—such as Wilson—give best yields but Wabash and Ogden also might be used, the communication suggested. Hegari, Black Amber, and Atlas are sorghum varieties well-suited to Delaware conditions. Prof. Mitchell warned that mixed sorghums should not be used, since there may be considerable variation in maturity among them.  
Both the agronomist and the county agent agree that it is best to mix soybean and sorghum seed together for seeding with a grain drill. Although the sorghum seed may settle to the bottom of the box on the drill and bring the danger of uneven seeding, this can be corrected by dampening the seed very slightly just before it is put in the box. Rate of seeding is one and one-half bushels of soybeans and 20 to 25 pounds of sorghum per acre. Fertilizer recommendation is 400 to 500 pounds of 10-10-10 per acre. The fertilizer should not be drilled with the seed, because of danger of injury to the germination of the soybean seed.  
Concluding the communication, Prof. Mitchell said the mixture should be harvested for silage just before the seed gets fully ripe and before the stalks get tough and woody. The sorghum grain should be in the soft dough stage. A field forage harvester with cutter bar attachments is the most satisfactory method of harvest.  
Good silage can be made without a preservative—if there is at least 40 per cent sorghum in the mixture, Prof. Mitchell said. Many farmers feel he added, that use of eight pounds of sodium

**Applications For Farm Wheat Acreage Allotments Must Be Filed By July 1**

Farmers on land on which no wheat was seeded for grain in any of the years, 1956, 1957 and 1958 and for which a 1958 wheat acreage allotment was not established, may apply for a 1959 wheat acreage allotment according to Joseph W. Ennis, chairman of the Kent Agricultural Stabilization and Conservation County Committee. The owner or operator of such a farm must apply in writing to his ASC county committee by July 1, 1958, Mr. Ennis stated, otherwise, a 1959 wheat acreage allotment will not be established for the farm.  
Mr. Ennis further explained that 1958 wheat acreage on a farm did not have a 1958 wheat acreage allotment does not qualify as wheat history acreage for the purpose of establishing acreage allotments. A 1959 old farm wheat acreage allotment will not be established for a farm without wheat history in 1956 and 1957, and on which wheat was planted for grain in 1958 without a 1958 wheat acreage allotment unless an application is filed by July 1. Blank application forms, MQ-25's are available at the Kent ASC office, 313 South Governors Avenue, for use in filing requests for allotments.

**Veterans News**

**QUESTIONS AND ANSWERS**  
Q—I recently noticed press reports saying down payments are no longer required for G. I. loans. Does this mean the private lender cannot ask the veteran to make a down payment?  
A—No. The Government regulation, requiring a minimum two per cent down payment as been rescinded, but the lender is free to require whatever down payment he believes is indicated.  
Q—I'm a Korea veteran drawing compensation for a service-connected disability. Is there a limit on what I can earn and still get my compensation payments?  
A—There is no limit. No matter how much you earn, your service-connected compensation will not be reduced. The ceiling on income applies only to pensions paid to veterans for total and permanent nonservice-connected disabilities.  
Q—We've recently had a happy event at our house and I want to name my new son a beneficiary of my GI Insurance. How do I go about it?  
A—Get a "Change of Beneficiary" form at any VA office. Fill it out, putting down your son's name as beneficiary, and send it to the VA District Office where you pay your premiums. Or, you may simply write the District Office a letter, naming your son

**Board of Health Clinics**

**May 19**  
Well Child Conference—Dover Health Unit, 414 S. State Street 1 p.m. Call Dover 5711, Ext. 10 for appointments.  
**May 20**  
Venereal Disease Clinic—Milford Health Unit, Shore Theater Building - 11:30 a.m. - 12:30 p.m.  
**May 21**  
Chest Clinic—Dover Health Unit, 414 S. State Street -10 a.m. Cancer Detection Center—Felton Fire Hall. Call Felton 4-4587 for appointments. For women 25

years of age and over.  
Polio Clinic—Camden, Caesar Rodney School - 5:30 - 7:30 p.m.

**BEE GEE**  
OUR GAS YOU KNOW BURNS STEADILY, AND HEATS A HOME SO READILY  
  
**HEAT WITH GAS!**  
Cahall's GAS SERVICE CO.  
3642 HARRINGTON DEL.

entertainment slated is the play "Auntie Mame" at the Brandywine Music Circus, a chicken barbecue, and a birthday party in observance of completion of 20 annual short courses.  
Homemakers staying at the university during the course will live in dormitories. Meals will be served in Kent Dining Hall. The fee for the course is \$12.85. Those wishing to see the play will be charged an additional \$2.25.  
Further details of the short course will be announced.  
**Timely Insect Control Tips**  
Several insect pests of ornamentals to control between May 15 and June 1 have been listed by entomologists at the University of Delaware.  
These insects are known to do much damage to homeground plantings, but can be killed with DDT or malathion. When DDT is suggested, mix one to two tablespoons of 50 per cent wettable powder per gallon of water. Four tablespoons of 25 per cent wettable malathion powder should be mixed in each gallon of water. The insects, some plants they attack, and the sprays recommended by the entomologists include:  
Mites—attack evergreens such as arborvitae, juniper and fire-thorn. Use malathion on these tiny sap-suckers. Repeat spray in 10 days.  
Lace bugs—damage azalea and rhododendron. Usually found on underside of leaves, where they feed. Control with DDT.  
Aphids—injure rose, azalea, other perennials. Usually found on new growing plant tips. Pests may be red or green. Use malathion.  
Leaf miners—found on box- wood and holly. Insect tunnels into leaves. Kill pests with two application of DDT, 10 days to two weeks apart.  
Elm leaf beetles—Kill these leaf-eaters with DDT.  
Pine shoot moths—pests destroy tips of shoots. Requires control after June 1. Spray six to nine times during May, June, and July. Use DDT every 10 to 14 days.  
**Wood Preservative Adds to Life Of Outdoor Furnishings**  
Homeowners sometimes invest considerable money and effort in furnishing yards with lawn furniture. If you are among them naturally you'd like to see the furniture last as long as possible.  
You can add years to the life of your wooden outdoor furnishings by treating with a wood preservative, suggests Ruth Adams, county home demonstration agent.  
A check by the agent with University of Delaware agricultural engineers resulted in recommendation of two preservatives which can easily be applied. The preservatives are pentachlorophenol, often referred to as "penta", and copper naphthenate.  
Both preservatives can be obtained in either concentrated or ready-to-use form at hardware stores, paint shops, or lumber yards. If a large quantity is required, it is less expensive to buy the concentrate and dilute it, as directed with diesel or fuel

entertainment slated is the play "Auntie Mame" at the Brandywine Music Circus, a chicken barbecue, and a birthday party in observance of completion of 20 annual short courses.  
Homemakers staying at the university during the course will live in dormitories. Meals will be served in Kent Dining Hall. The fee for the course is \$12.85. Those wishing to see the play will be charged an additional \$2.25.  
Further details of the short course will be announced.  
**Timely Insect Control Tips**  
Several insect pests of ornamentals to control between May 15 and June 1 have been listed by entomologists at the University of Delaware.  
These insects are known to do much damage to homeground plantings, but can be killed with DDT or malathion. When DDT is suggested, mix one to two tablespoons of 50 per cent wettable powder per gallon of water. Four tablespoons of 25 per cent wettable malathion powder should be mixed in each gallon of water. The insects, some plants they attack, and the sprays recommended by the entomologists include:  
Mites—attack evergreens such as arborvitae, juniper and fire-thorn. Use malathion on these tiny sap-suckers. Repeat spray in 10 days.  
Lace bugs—damage azalea and rhododendron. Usually found on underside of leaves, where they feed. Control with DDT.  
Aphids—injure rose, azalea, other perennials. Usually found on new growing plant tips. Pests may be red or green. Use malathion.  
Leaf miners—found on box- wood and holly. Insect tunnels into leaves. Kill pests with two application of DDT, 10 days to two weeks apart.  
Elm leaf beetles—Kill these leaf-eaters with DDT.  
Pine shoot moths—pests destroy tips of shoots. Requires control after June 1. Spray six to nine times during May, June, and July. Use DDT every 10 to 14 days.  
**Wood Preservative Adds to Life Of Outdoor Furnishings**  
Homeowners sometimes invest considerable money and effort in furnishing yards with lawn furniture. If you are among them naturally you'd like to see the furniture last as long as possible.  
You can add years to the life of your wooden outdoor furnishings by treating with a wood preservative, suggests Ruth Adams, county home demonstration agent.  
A check by the agent with University of Delaware agricultural engineers resulted in recommendation of two preservatives which can easily be applied. The preservatives are pentachlorophenol, often referred to as "penta", and copper naphthenate.  
Both preservatives can be obtained in either concentrated or ready-to-use form at hardware stores, paint shops, or lumber yards. If a large quantity is required, it is less expensive to buy the concentrate and dilute it, as directed with diesel or fuel

entertainment slated is the play "Auntie Mame" at the Brandywine Music Circus, a chicken barbecue, and a birthday party in observance of completion of 20 annual short courses.  
Homemakers staying at the university during the course will live in dormitories. Meals will be served in Kent Dining Hall. The fee for the course is \$12.85. Those wishing to see the play will be charged an additional \$2.25.  
Further details of the short course will be announced.  
**Timely Insect Control Tips**  
Several insect pests of ornamentals to control between May 15 and June 1 have been listed by entomologists at the University of Delaware.  
These insects are known to do much damage to homeground plantings, but can be killed with DDT or malathion. When DDT is suggested, mix one to two tablespoons of 50 per cent wettable powder per gallon of water. Four tablespoons of 25 per cent wettable malathion powder should be mixed in each gallon of water. The insects, some plants they attack, and the sprays recommended by the entomologists include:  
Mites—attack evergreens such as arborvitae, juniper and fire-thorn. Use malathion on these tiny sap-suckers. Repeat spray in 10 days.  
Lace bugs—damage azalea and rhododendron. Usually found on underside of leaves, where they feed. Control with DDT.  
Aphids—injure rose, azalea, other perennials. Usually found on new growing plant tips. Pests may be red or green. Use malathion.  
Leaf miners—found on box- wood and holly. Insect tunnels into leaves. Kill pests with two application of DDT, 10 days to two weeks apart.  
Elm leaf beetles—Kill these leaf-eaters with DDT.  
Pine shoot moths—pests destroy tips of shoots. Requires control after June 1. Spray six to nine times during May, June, and July. Use DDT every 10 to 14 days.  
**Wood Preservative Adds to Life Of Outdoor Furnishings**  
Homeowners sometimes invest considerable money and effort in furnishing yards with lawn furniture. If you are among them naturally you'd like to see the furniture last as long as possible.  
You can add years to the life of your wooden outdoor furnishings by treating with a wood preservative, suggests Ruth Adams, county home demonstration agent.  
A check by the agent with University of Delaware agricultural engineers resulted in recommendation of two preservatives which can easily be applied. The preservatives are pentachlorophenol, often referred to as "penta", and copper naphthenate.  
Both preservatives can be obtained in either concentrated or ready-to-use form at hardware stores, paint shops, or lumber yards. If a large quantity is required, it is less expensive to buy the concentrate and dilute it, as directed with diesel or fuel

entertainment slated is the play "Auntie Mame" at the Brandywine Music Circus, a chicken barbecue, and a birthday party in observance of completion of 20 annual short courses.  
Homemakers staying at the university during the course will live in dormitories. Meals will be served in Kent Dining Hall. The fee for the course is \$12.85. Those wishing to see the play will be charged an additional \$2.25.  
Further details of the short course will be announced.  
**Timely Insect Control Tips**  
Several insect pests of ornamentals to control between May 15 and June 1 have been listed by entomologists at the University of Delaware.  
These insects are known to do much damage to homeground plantings, but can be killed with DDT or malathion. When DDT is suggested, mix one to two tablespoons of 50 per cent wettable powder per gallon of water. Four tablespoons of 25 per cent wettable malathion powder should be mixed in each gallon of water. The insects, some plants they attack, and the sprays recommended by the entomologists include:  
Mites—attack evergreens such as arborvitae, juniper and fire-thorn. Use malathion on these tiny sap-suckers. Repeat spray in 10 days.  
Lace bugs—damage azalea and rhododendron. Usually found on underside of leaves, where they feed. Control with DDT.  
Aphids—injure rose, azalea, other perennials. Usually found on new growing plant tips. Pests may be red or green. Use malathion.  
Leaf miners—found on box- wood and holly. Insect tunnels into leaves. Kill pests with two application of DDT, 10 days to two weeks apart.  
Elm leaf beetles—Kill these leaf-eaters with DDT.  
Pine shoot moths—pests destroy tips of shoots. Requires control after June 1. Spray six to nine times during May, June, and July. Use DDT every 10 to 14 days.  
**Wood Preservative Adds to Life Of Outdoor Furnishings**  
Homeowners sometimes invest considerable money and effort in furnishing yards with lawn furniture. If you are among them naturally you'd like to see the furniture last as long as possible.  
You can add years to the life of your wooden outdoor furnishings by treating with a wood preservative, suggests Ruth Adams, county home demonstration agent.  
A check by the agent with University of Delaware agricultural engineers resulted in recommendation of two preservatives which can easily be applied. The preservatives are pentachlorophenol, often referred to as "penta", and copper naphthenate.  
Both preservatives can be obtained in either concentrated or ready-to-use form at hardware stores, paint shops, or lumber yards. If a large quantity is required, it is less expensive to buy the concentrate and dilute it, as directed with diesel or fuel

entertainment slated is the play "Auntie Mame" at the Brandywine Music Circus, a chicken barbecue, and a birthday party in observance of completion of 20 annual short courses.  
Homemakers staying at the university during the course will live in dormitories. Meals will be served in Kent Dining Hall. The fee for the course is \$12.85. Those wishing to see the play will be charged an additional \$2.25.  
Further details of the short course will be announced.  
**Timely Insect Control Tips**  
Several insect pests of ornamentals to control between May 15 and June 1 have been listed by entomologists at the University of Delaware.  
These insects are known to do much damage to homeground plantings, but can be killed with DDT or malathion. When DDT is suggested, mix one to two tablespoons of 50 per cent wettable powder per gallon of water. Four tablespoons of 25 per cent wettable malathion powder should be mixed in each gallon of water. The insects, some plants they attack, and the sprays recommended by the entomologists include:  
Mites—attack evergreens such as arborvitae, juniper and fire-thorn. Use malathion on these tiny sap-suckers. Repeat spray in 10 days.  
Lace bugs—damage azalea and rhododendron. Usually found on underside of leaves, where they feed. Control with DDT.  
Aphids—injure rose, azalea, other perennials. Usually found on new growing plant tips. Pests may be red or green. Use malathion.  
Leaf miners—found on box- wood and holly. Insect tunnels into leaves. Kill pests with two application of DDT, 10 days to two weeks apart.  
Elm leaf beetles—Kill these leaf-eaters with DDT.  
Pine shoot moths—pests destroy tips of shoots. Requires control after June 1. Spray six to nine times during May, June, and July. Use DDT every 10 to 14 days.  
**Wood Preservative Adds to Life Of Outdoor Furnishings**  
Homeowners sometimes invest considerable money and effort in furnishing yards with lawn furniture. If you are among them naturally you'd like to see the furniture last as long as possible.  
You can add years to the life of your wooden outdoor furnishings by treating with a wood preservative, suggests Ruth Adams, county home demonstration agent.  
A check by the agent with University of Delaware agricultural engineers resulted in recommendation of two preservatives which can easily be applied. The preservatives are pentachlorophenol, often referred to as "penta", and copper naphthenate.  
Both preservatives can be obtained in either concentrated or ready-to-use form at hardware stores, paint shops, or lumber yards. If a large quantity is required, it is less expensive to buy the concentrate and dilute it, as directed with diesel or fuel

entertainment slated is the play "Auntie Mame" at the Brandywine Music Circus, a chicken barbecue, and a birthday party in observance of completion of 20 annual short courses.  
Homemakers staying at the university during the course will live in dormitories. Meals will be served in Kent Dining Hall. The fee for the course is \$12.85. Those wishing to see the play will be charged an additional \$2.25.  
Further details of the short course will be announced.  
**Timely Insect Control Tips**  
Several insect pests of ornamentals to control between May 15 and June 1 have been listed by entomologists at the University of Delaware.  
These insects are known to do much damage to homeground plantings, but can be killed with DDT or malathion. When DDT is suggested, mix one to two tablespoons of 50 per cent wettable powder per gallon of water. Four tablespoons of 25 per cent wettable malathion powder should be mixed in each gallon of water. The insects, some plants they attack, and the sprays recommended by the entomologists include:  
Mites—attack evergreens such as arborvitae, juniper and fire-thorn. Use malathion on these tiny sap-suckers. Repeat spray in 10 days.  
Lace bugs—damage azalea and rhododendron. Usually found on underside of leaves, where they feed. Control with DDT.  
Aphids—injure rose, azalea, other perennials. Usually found on new growing plant tips. Pests may be red or green. Use malathion.  
Leaf miners—found on box- wood and holly. Insect tunnels into leaves. Kill pests with two application of DDT, 10 days to two weeks apart.  
Elm leaf beetles—Kill these leaf-eaters with DDT.  
Pine shoot moths—pests destroy tips of shoots. Requires control after June 1. Spray six to nine times during May, June, and July. Use DDT every 10 to 14 days.  
**Wood Preservative Adds to Life Of Outdoor Furnishings**  
Homeowners sometimes invest considerable money and effort in furnishing yards with lawn furniture. If you are among them naturally you'd like to see the furniture last as long as possible.  
You can add years to the life of your wooden outdoor furnishings by treating with a wood preservative, suggests Ruth Adams, county home demonstration agent.  
A check by the agent with University of Delaware agricultural engineers resulted in recommendation of two preservatives which can easily be applied. The preservatives are pentachlorophenol, often referred to as "penta", and copper naphthenate.  
Both preservatives can be obtained in either concentrated or ready-to-use form at hardware stores, paint shops, or lumber yards. If a large quantity is required, it is less expensive to buy the concentrate and dilute it, as directed with diesel or fuel

entertainment slated is the play "Auntie Mame" at the Brandywine Music Circus, a chicken barbecue, and a birthday party in observance of completion of 20 annual short courses.  
Homemakers staying at the university during the course will live in dormitories. Meals will be served in Kent Dining Hall. The fee for the course is \$12.85. Those wishing to see the play will be charged an additional \$2.25.  
Further details of the short course will be announced.  
**Timely Insect Control Tips**  
Several insect pests of ornamentals to control between May 15 and June 1 have been listed by entomologists at the University of Delaware.  
These insects are known to do much damage to homeground plantings, but can be killed with DDT or malathion. When DDT is suggested, mix one to two tablespoons of 50 per cent wettable powder per gallon of water. Four tablespoons of 25 per cent wettable malathion powder should be mixed in each gallon of water. The insects, some plants they attack, and the sprays recommended by the entomologists include:  
Mites—attack evergreens such as arborvitae, juniper and fire-thorn. Use malathion on these tiny sap-suckers. Repeat spray in 10 days.  
Lace bugs—damage azalea and rhododendron. Usually found on underside of leaves, where they feed. Control with DDT.  
Aphids—injure rose, azalea, other perennials. Usually found on new growing plant tips. Pests may be red or green. Use malathion.  
Leaf miners—found on box- wood and holly. Insect tunnels into leaves. Kill pests with two application of DDT, 10 days to two weeks apart.  
Elm leaf beetles—Kill these leaf-eaters with DDT.  
Pine shoot moths—pests destroy tips of shoots. Requires control after June 1. Spray six to nine times during May, June, and July. Use DDT every 10 to 14 days.  
**Wood Preservative Adds to Life Of Outdoor Furnishings**  
Homeowners sometimes invest considerable money and effort in furnishing yards with lawn furniture. If you are among them naturally you'd like to see the furniture last as long as possible.  
You can add years to the life of your wooden outdoor furnishings by treating with a wood preservative, suggests Ruth Adams, county home demonstration agent.  
A check by the agent with University of Delaware agricultural engineers resulted in recommendation of two preservatives which can easily be applied. The preservatives are pentachlorophenol, often referred to as "penta", and copper naphthenate.  
Both preservatives can be obtained in either concentrated or ready-to-use form at hardware stores, paint shops, or lumber yards. If a large quantity is required, it is less expensive to buy the concentrate and dilute it, as directed with diesel or fuel

entertainment slated is the play "Auntie Mame" at the Brandywine Music Circus, a chicken barbecue, and a birthday party in observance of completion of 20 annual short courses.  
Homemakers staying at the university during the course will live in dormitories. Meals will be served in Kent Dining Hall. The fee for the course is \$12.85. Those wishing to see the play will be charged an additional \$2.25.  
Further details of the short course will be announced.  
**Timely Insect Control Tips**  
Several insect pests of ornamentals to control between May 15 and June 1 have been listed by entomologists at the University of Delaware.  
These insects are known to do much damage to homeground plantings, but can be killed with DDT or malathion. When DDT is suggested, mix one to two tablespoons of 50 per cent wettable powder per gallon of water. Four tablespoons of 25 per cent wettable malathion powder should be mixed in each gallon of water. The insects, some plants they attack, and the sprays recommended by the entomologists include:  
Mites—attack evergreens such as arborvitae, juniper and fire-thorn. Use malathion on these tiny sap-suckers. Repeat spray in 10 days.  
Lace bugs—damage azalea and rhododendron. Usually found on underside of leaves, where they feed. Control with DDT.  
Aphids—injure rose, azalea, other perennials. Usually found on new growing plant tips. Pests may be red or green. Use malathion.  
Leaf miners—found on box- wood and holly. Insect tunnels into leaves. Kill pests with two application of DDT, 10 days to two weeks apart.  
Elm leaf beetles—Kill these leaf-eaters with DDT.  
Pine shoot moths—pests destroy tips of shoots. Requires control after June 1. Spray six to nine times during May, June, and July. Use DDT every 10 to 14 days.  
**Wood Preservative Adds to Life Of Outdoor Furnishings**  
Homeowners sometimes invest considerable money and effort in furnishing yards with lawn furniture. If you are among them naturally you'd like to see the furniture last as long as possible.  
You can add years to the life of your wooden outdoor furnishings by treating with a wood preservative, suggests Ruth Adams, county home demonstration agent.  
A check by the agent with University of Delaware agricultural engineers resulted in recommendation of two preservatives which can easily be applied. The preservatives are pentachlorophenol, often referred to as "penta", and copper naphthenate.  
Both preservatives can be obtained in either concentrated or ready-to-use form at hardware stores, paint shops, or lumber yards. If a large quantity is required, it is less expensive to buy the concentrate and dilute it, as directed with diesel or fuel

entertainment slated is the play "Auntie Mame" at the Brandywine Music Circus, a chicken barbecue, and a birthday party in observance of completion of 20 annual short courses.  
Homemakers staying at the university during the course will live in dormitories. Meals will be served in Kent Dining Hall. The fee for the course is \$12.85. Those wishing to see the play will be charged an additional \$2.25.  
Further details of the short course will be announced.  
**Timely Insect Control Tips**  
Several insect pests of ornamentals to control between May 15 and June 1 have been listed by entomologists at the University of Delaware.  
These insects are known to do much damage to homeground plantings, but can be killed with DDT or malathion. When DDT is suggested, mix one to two tablespoons of 50 per cent wettable powder per gallon of water. Four tablespoons of 25 per cent wettable malathion powder should be mixed in each gallon of water. The insects, some plants they attack, and the sprays recommended by the entomologists include:  
Mites—attack evergreens such as arborvitae, juniper and fire-thorn. Use malathion on these tiny sap-suckers. Repeat spray in 10 days.  
Lace bugs—damage azalea and rhododendron. Usually found on underside of leaves, where they feed. Control with DDT.  
Aphids—injure rose, azalea, other perennials. Usually found on new growing plant tips. Pests may be red or green. Use malathion.  
Leaf miners—found on box- wood and holly. Insect tunnels into leaves. Kill pests with two application of DDT, 10 days to two weeks apart.  
Elm leaf beetles—Kill these leaf-eaters with DDT.  
Pine shoot moths—pests destroy tips of shoots. Requires control after June 1. Spray six to nine times during May, June, and July. Use DDT every 10 to 14 days.  
**Wood Preservative Adds to Life Of Outdoor Furnishings**  
Homeowners sometimes invest considerable money and effort in furnishing yards with lawn furniture. If you are among them naturally you'd like to see the furniture last as long as possible.  
You can add years to the life of your wooden outdoor furnishings by treating with a wood preservative, suggests Ruth Adams, county home demonstration agent.  
A check by the agent with University of Delaware agricultural engineers resulted in recommendation of two preservatives which can easily be applied. The preservatives are pentachlorophenol, often referred to as "penta", and copper naphthenate.  
Both preservatives can be obtained in either concentrated or ready-to-use form at hardware stores, paint shops, or lumber yards. If a large quantity is required, it is less expensive to buy the concentrate and dilute it, as directed with diesel or fuel

entertainment slated is the play "Auntie Mame" at the Brandywine Music Circus, a chicken barbecue, and a birthday party in observance of completion of 20 annual short courses.  
Homemakers staying at the university during the course will live in dormitories. Meals will be served in Kent Dining Hall. The fee for the course is \$12.85. Those wishing to see the play will be charged an additional \$2.25.  
Further details of the short course will be announced.  
**Timely Insect Control Tips**  
Several insect pests of ornamentals to control between May 15 and June 1 have been listed by entomologists at the University of Delaware.  
These insects are known to do much damage to homeground plantings, but can be killed with DDT or malathion. When DDT is suggested, mix one to two tablespoons of 50 per cent wettable powder per gallon of water. Four tablespoons of 25 per cent wettable malathion powder should be mixed in each gallon of water. The insects, some plants they attack, and the sprays recommended by the entomologists include:  
Mites—attack evergreens such as arborvitae, juniper and fire-thorn. Use malathion on these tiny sap-suckers. Repeat spray in 10 days.  
Lace bugs—damage azalea and rhododendron. Usually found on underside of leaves, where they feed. Control with DDT.  
Aphids—injure rose, azalea, other perennials. Usually found on new growing plant tips. Pests may be red or green. Use malathion.  
Leaf miners—found on box- wood and holly. Insect tunnels into leaves. Kill pests with two application of DDT, 10 days to two weeks apart.  
Elm leaf beetles—Kill these leaf-eaters with DDT.  
Pine shoot moths—pests destroy tips of shoots. Requires control after June 1. Spray six to nine times during May, June, and July. Use DDT every 10 to 14 days.  
**Wood Preservative Adds to Life Of Outdoor Furnishings**  
Homeowners sometimes invest considerable money and effort in furnishing yards with lawn furniture. If you are among them naturally you'd like to see the furniture last as long as possible.  
You can add years to the life of your wooden outdoor furnishings by treating with a wood preservative, suggests Ruth Adams, county home demonstration agent.  
A check by the agent with University of Delaware agricultural engineers resulted in recommendation of two preservatives which can easily be applied. The preservatives are pentachlorophenol, often referred to as "penta", and copper naphthenate.  
Both preservatives can be obtained in either concentrated or ready-to-use form at hardware stores, paint shops, or lumber yards. If a large quantity is required, it is less expensive to buy the concentrate and dilute it, as directed with diesel or fuel

entertainment slated is the play "Auntie Mame" at the Brandywine Music Circus, a chicken barbecue, and a birthday party in observance of completion of 20 annual short courses.  
Homemakers staying at the university during the course will live in dormitories. Meals will be served in Kent Dining Hall. The fee for the course is \$12.85. Those wishing to see the play will be charged an additional \$2.25.  
Further details of the short course will be announced.  
**Timely Insect Control Tips**  
Several insect pests of ornamentals to control between May 15 and June 1 have been listed by entomologists at the University of Delaware.  
These insects are known to do much damage to homeground plantings, but can be killed with DDT or malathion. When DDT is suggested, mix one to two tablespoons of 50 per cent wettable powder per gallon of water. Four tablespoons of 25 per cent wettable malathion powder should be mixed in each gallon of water. The insects, some plants they attack, and the sprays recommended by the entomologists include:  
Mites—attack evergreens such as arborvitae, juniper and fire-thorn. Use malathion on these tiny sap-suckers. Repeat spray in 10 days.  
Lace bugs—damage azalea and rhododendron. Usually found on underside of leaves, where they feed. Control with DDT.  
Aphids—injure rose, azalea, other perennials. Usually found on new growing plant tips. Pests may be red or green. Use malathion.  
Leaf miners—found on box- wood and holly. Insect tunnels into leaves. Kill pests with two application of DDT, 10 days to two weeks apart.  
Elm leaf beetles—Kill these leaf-eaters with DDT.  
Pine shoot moths—pests destroy tips of shoots. Requires control after June 1. Spray six to nine times during May, June, and July. Use DDT every 10 to 14 days.  
**Wood Preservative Adds to Life Of Outdoor Furnishings**  
Homeowners sometimes invest considerable money and effort in furnishing yards with lawn furniture. If you are among them naturally you'd like to see the furniture last as long as possible.  
You can add years to the life of your wooden outdoor furnishings by treating with a wood preservative, suggests Ruth Adams, county home demonstration agent.  
A check by the agent with University of Delaware agricultural engineers resulted in recommendation of two preservatives which can easily be applied. The preservatives are pentachlorophenol, often referred to as "penta", and copper naphthenate.  
Both preservatives can be obtained in either concentrated or ready-to-use form at hardware stores, paint shops, or lumber yards. If a large quantity is required, it is less expensive to buy the concentrate and dilute it, as directed with diesel or fuel

entertainment slated is the play "Auntie Mame" at the Brandywine Music Circus, a chicken barbecue, and a birthday party in observance of completion of 20 annual short courses.  
Homemakers staying at the university during the course will live in dormitories. Meals will be served in Kent Dining Hall. The fee for the course is \$12.85. Those wishing to see the play will be charged an additional \$2.25.  
Further details of the short course will be announced.  
**Timely Insect Control Tips**  
Several insect pests of ornamentals to control between May 15 and June 1 have been listed by entomologists at the University of Delaware.  
These insects are known to do much damage to homeground plantings, but can be killed with DDT or malathion. When DDT is suggested, mix one to two tablespoons of 50 per cent wettable powder per gallon of water. Four tablespoons of 25 per cent wettable malathion powder should be mixed in each gallon of water. The insects, some plants they attack, and the sprays recommended by the entomologists include:  
Mites—attack evergreens such as arborvitae, juniper and fire-thorn. Use malathion on these tiny sap-suckers. Repeat spray in 10 days.  
Lace bugs—damage azalea and rhododendron. Usually found on underside of leaves, where they feed. Control with DDT.  
Aphids—injure rose, azalea, other perennials. Usually found on new growing plant tips. Pests may be red or green. Use malathion.  
Leaf miners—found on box- wood and holly. Insect tunnels into leaves. Kill pests with two application of DDT, 10 days to two weeks apart.  
Elm leaf beetles—Kill these leaf-eaters with DDT.  
Pine shoot moths—pests destroy tips of shoots. Requires control after June 1. Spray six to nine times during May, June, and July. Use DDT every 10 to 14 days.  
**Wood Preservative Adds to Life Of Outdoor Furnishings**  
Homeowners sometimes invest considerable money and effort in furnishing yards with lawn furniture. If you are among them naturally you'd like to see the furniture last as long as possible.  
You can add years to the life of your wooden outdoor furnishings by treating with a wood preservative, suggests Ruth Adams, county home demonstration agent.  
A check by the agent with University of Delaware agricultural engineers resulted in recommendation of two preservatives which can easily be applied. The preservatives are pentachlorophenol, often referred to as "penta", and copper naphthenate.  
Both preservatives can be obtained in either concentrated or ready-to-use form at hardware stores, paint shops, or lumber yards. If a large quantity is required, it is less expensive to buy the concentrate and dilute it, as directed with diesel or fuel



THE HARRINGTON JOURNAL

Out of State \$3.00 Per Year
L. H. BURGESS AND W. C. BURGESS Publishers
C. H. BURGESS Editor
W. C. BURGESS Associate Editor

THE GRASSHOPPER AND THE ANT

We do not condemn the State Department of Public Welfare, nor do we condemn the state laws, but we do condemn the deplorable and heinous manner in which welfare handouts are being made in Delaware.

In other words, we deplore a situation—the correction of which will require the co-operative efforts of the State Department of Public Welfare, the Legislature, the Levy Courts, and of all taxpayers.

The abuse of welfare handouts has a host of complications which, directly and indirectly, will cause every unit of organized government to dip into its treasury for reasons other than of welfare payments.

Furthermore, this misuse casts the most invidious reflection on those who are fully entitled to welfare payments.

Getting back to reasons for additional expenses, emanating because of the welfare program but not thru it, one finds that governmental units, county, city, and state, must pay for additional law enforcement and medical attention because of those undesirables attracted to the State by the welfare state.

Weeding out the undesirables from the welfare lists should enable the welfare department to pay more attention to the remainder. This, of course, will mean some changes in state laws. Furthermore, the State might be better off, in the long run, if it refused federal aid in the matter of illegitimate children.

A slip is a slip, but when it happens four or five times it becomes a hit-and-run affair. In Harrington, we have heard of two cases where illegitimate children are procreated so the mother will not have to work. Other persons on welfare lists have refused odd jobs for fear of being put off the list.

Joseph F. Dayton, president of the New Castle County Levy Court, has said that he intends to see to it that all healthy and able-bodied men receiving relief assistance work out their assistance at going labor rates in parks, cutting grass, cleaning up, and generally beautifying the parklands. The state welfare department says this is legal and that it will help.

We believe this point could be interpolated. Why not put the women to work? Furthermore, would one say that an individual giving birth to several illegitimate children, is suitable for a mother? And why shouldn't such an individual be sterilized?

A county official, of integrity, told us he knew of a family of illegitimate children, living from welfare, which was now having illegitimate children of their own. Another example, he cited, showed the transfer of farmlands and bank account by a father to the married children, with the father then living with the children and collecting relief. This requires a change in state laws.

The Levy Courts are told to pay half of the general welfare costs whatever they may be. It is hard to make a good budget on ephemeral costs. An alternative is to raise the taxes, which calls for legislation. A better means would be to enact legislation which would enable us to cut the chiselers off the lists, and to send the migrants back to their homes after the working season.

Kent County spends close to \$156,000 per year on welfare, with a continued request for more. We have had some 16 years of prosperity and still we have this welfare problem. What will it be if the Recession continues?

There are unimpeachable instances where welfare payments are needed but, otherwise, there are far too many grasshoppers and not enough ants to go around.

If the present situation continues, the number of grasshoppers will increase to the point where they can go to the polls and tell the ants how much welfare they (the grasshoppers) are to receive and why. One knows what happens to a field after the grasshoppers have been in it.

Sulky Slants



By MRS. DAVE (PAT) SMITH

With the opening drawing near all the drivers are getting everything in order. I don't think at anytime has there been so much confusion as there is this year. And so many new stables, and people that you don't know, that it seems good to see someone from Harrington. So far I've seen the Bowers, Les Hopkins and his dad, the Canton, which have their trailer next to mine this year. Also the Manges. Course there are more but I haven't seen them yet. When the big white canvass goes up around the track it begins to look like business. The green and white flag, flying over the grandstand and the paddocks and big balloon that will be advertising the raceway all gives with the racing fever.

The Courier Express of Buffalo and the Evening News are all taking pictures of different horses. Speedster had his taken with my black cat walking the fence. Now isn't that just like a darn black cat on the fence? But he really happens to be Speedsters' pal. Nothing ever worries either one of them.

Gosh, it seems so odd this year, we are down where we used to be for so many years. And next to us are Dick Williams

from Orlando, also Delvin Miller's stable, with Jimmie Arthur the second trailer with 15 head; Dick has 22 in his stable. Then Fred Parks next to that then Eddie Wheeler. With all these big stables we have loads of fun. So much young help that they keep things in an up-roar all the time.

Another thing I think there are all kinds of pets this year. Everyone has something different. That is one thing Miss Chessman, the boss up here likes is pets. She gets around at sometime or another to visit with all before the season is over.

Say John Schegle, did you fall off that water wagon that sprinkles the main track there? Or did I read that article right?

Wonder if Mrs. Harrington's flowers are coming out. That was always a beautiful corner in the spring. Flowers of all colors. I've ordered my flowers for under the awning. But I have to wait till after Mother's Day. I've always said; "give me my flowers now, not after I'm gone. And I do have them the year around somewhere.

Intensive search for more phosphate—a cheap fertilizer—is being made on all the Cook Islands, Rarotonga, reports. Australia, New Zealand and the islands are expected to need it badly before long.

An intensive campaign against continuance of the English language in India is being urged in Allahabad by K. A. Kalelkar, a leading linguist. All of India's own tongues should be encouraged, he asserts.

Property Transfers

Debbie Prattis, Wyoming to Anna Mae Prattis, Wyoming, on east side of st. hwy. leading from Wyoming to Willow Grove adj. lands of Lavinia Gibbs & grantors. 5,000 sq. ft. more or less. \$1 & love & affection.

Albert S. & Mattie B. Boyer, Smyrna to Harry C. & Ada E. VanSant, Dover, in N. Murderkill Hund. lying southwest on st. hwy. from Dover to Rising Sun adj. property of William Jackson & Moore's Lake. 13,970 sq. ft. more or less. \$10 stamps \$1.65.

Walter S. Camper, Jr., Executor of Estate of Walter S. Camper, Delaware to Sara I. & Emory N. Lynch, Jr., Kent County. 2 tracts of land on south side of pub rd. leading from Frederica to Bowers Beach adj. lands of Lydia Abrams & David Phillips & others. Tract No. 1 - 7 acres, more or less. Tract No. 2 - 175 acres, more or less. \$25,650 stamps \$28.60.

John & Lucille Peterson, Bowers to Frank T. & Margaret M. Gonzon, New Castle, in N. Bowers on north side of Cooper Ave., adj. lands of John Peterson & Rhea Melvin. Be contents what they may. \$700 stamps \$1.10.

Norman V. Wyatt, Felton to Chas. T. & Amy S. Brown, Felton, west side of south bound dual hwy. leading from Felton to Harrington adj. Arthur Williams & John Ware. \$8,000.

John Anderson, New Castle to Fred Anderson, New Castle, on south west side of Murderkill River. adj. Blanche Graves. \$5.

Joshua B. Gray, Milton to Gordon C. & Blanche E. Betts, Frederica, on east side of pub rd. leading from Frederica to Milford. adj. Thomas B. Emory. 17,095 sq. ft. \$200.

Charles Harney, Caroline County, Md., to J. Leslie & Ohma H. Spence, Md. Tract of land partly in Caroline County & Kent County on Denton & Harrington Rd. adj. John Leslie Spence. 1,935 sq. ft. in Delaware. 410 sq. ft. in Maryland. \$5.

Frank Flamer, Harrington to Harry Greenberg, Harrington, lying on Clymer Rd. adj. Harry Tharp — John M. Smith. \$1 stamps 55 cts.

Henry A. Walters, Caroline County, Md. to J. Leslie & Ohma M. Spence, Md. 4 tracts of land on east side of pub. rd. leading from Union Cor. to Burrsville & Wesley M. E. Church. Tract No. 1 - 20 perches; Tract No. 2 - 2 acres, 87 perches; Tract No. 3 - 25 1/2 sq. perches; Tract No. 4 - 8.8 sq. perches. \$2800.

Francis G. & Ella M. Simpson, Houston to Emmett M. & Josephine Herrington, Houston, lying on south side of inter. of new rd. leading from Houston to Milford. \$250.

The President, Directors and Company of Farmers Bank of Delaware, Trustee of James M. Satterfield to The State of Delaware, Dover, adj. lands of James M. Satterfield & Ella Murphy & lands of State of Delaware. 0.26 acres, more or less. \$50,000 stamps \$55.

Gladys A. & Homer Irving Moor, Chestertown, Md. to Wm. A. & Clara E. Keiser, Cheswold, in Little Creek Hund. lying on south side of st. hwy. leading from Cheswold to Bishops Cor. to Leipsic. 12,600 sq. ft. \$10 stamps 55cts.

Fred & Margaret T. Jergens, N. Y. to Herman & Charles Jergens, in E. Dover Hund. lying on west side of black top rd. leading from W. Railroad Ave. in Wyoming to Wyoming Mill Pond to Dover 7 Hazletville black top rd. 204.5 acres - 195 acres orabrit & 9.5 acres cripple. \$1 & other consid.

Violet Ann & Harry Scotton Jr., Clayton to Clements & Ann Horvath, Hartly, on northwest side of concrete hwy. No. 11 leading from Hartly toward Templeville in W. Dover Hund. \$250.

Olivia B. Tullman, Delaware to John Edward & Thelma Edna Gibbs, Hartly, in W. Dover Hund. on east side of pub. rd. leading from Dover to Marydel hwy. to Hartly adj. Thomas Ford & Joshua Parker. 21 acres woods & 34 sq. perches. \$1200.

Wm. H. Davis, W. Dover Hund., to Alex Borge, N. Y., in W. Dover Hund. south side of pub. rd. leading from Marydel to Tilghman Cor. to Hazletville adj. Wm. Davis & Charles Toth & others. 36,000 sq. ft. \$350.

James E. Jackson etal, Milford to Donald G. Snyder, Milford, 2 lots on plot of Lynch lands. \$1.

Harrington School Notes

Cupboard Chemistry Club

We heated salts to see if they had water in them. Sal Soda and epsom salts had water in the crystals. Table salt had no water.

Senior Personality

Robert Franklin Garey is the son of Mr. and Mrs. Percy Garey. Robert, better known as Puss, was born April 14, 1940 at Denton, Md.

Puss came to Harrington the first part of 1948.

His favorite subjects are agriculture and typing. His favorite sport is football. Puss' favorite pastime is playing baseball. His favorite expression is "Eat me, I'm a cookie."

He plans to get a job for contracting after graduation.

Library Club News

The meeting was called to order by our president, Brenda Banning at 9:55. The minutes were read and there was one correction made. There was no old business.

We discussed new business of our picnic at the end of the year.

Marie Hrupsa gave a scrapbook committee report and Belyia Morgan gave a magazine report on the Ladies Home Journal. We all did our housekeeping duties. The meeting was adjourned at 10:18.

Mrs. Howard's Room

Mrs. Howard's boys and girls really enjoyed the May Day program.

We are making things for Mother's Day, working on pictures and flowers and a few other things.

We hope we can finish our last book, "The New Anything Can Happen, before school closes.

Mrs. Tatman's Room

Friday our school had a Harrington May Mart, and we all had a very nice time. We enjoyed the program, the games, the eats, and the track events very much.

Those taking part from our room in the May Mart program were as follows: May Pole Dance Kitty Lou Burgess and Vickie Hill, attendants—Carolyn Porter and Michael Kohel.

The winners in the track events were: 50 yd. dash—2nd. place, Wayne Porter; 100 yd. dash—3rd. place, Wayne Porter; 440 yd. relay—3rd. place, Larry Bonniwell; 440 yd. relay—3rd. place, Donnie Sam Knox.

Mr. Smith's Room

We had our class meeting Wednesday. During this meeting we had our election of officers. They were as follows: president, Patricia Ann Richardson; vice-president, Walter Perdue; secretary, Margaret Ferrelli; treasurer, Irene Eilers.

After lunch the officers came back to our room early to elect people for the following jobs:

Boy's and girls leaders—Charles Moore, Jean Breeding; boy's and girls middle monitors—Wayne Collison, Beatrice Larimore; boys and girls monitors—Jack Reed, Thomasine Ross; librarians, Frank Collins, Jeanette Jones; black boards, Marvin Smith, Ilene Cain; bulletin boards

Snowwhite and 7 Dwarfs Play at Reese

At Reese, May 15, 16, 17; Glenn Ford's "COWBOY" May 18-19-20

That wondrous masterpiece of sheer delight. Who hasn't heard about Snow White and the Seven Dwarfs." A classic of long standing, which plays the Reese Theatre, Thursday, Friday and Saturday, May 15-16-17. As an added hit for the western fans, Lola Albright and a great cast appear in "Seven Guns to Mesa" plus "Future Baseball Stars." A better all-family program could not be offered. Producer Control prices prevail: Children under 12 years, 25c; Colored Balcony, 50c; Orchestra, 75c; for this show only.

The acknowledged "Giant of all epics is Glenn Ford's "Cowboy", the giant attraction listed for showing at the Reese Theatre, Sunday, Monday and Tuesday, May 18, 19 and 20. This is an adult western, featuring Jack Lemmon and a superlative cast and is the giant hit winning the critics award. Regular prices prevail.

Pakistan has signed, in Karachi, a contract with a British firm to build the multi-purpose Mangla dam project in the section of Kashmir now held by Pakistan. It will control waters of the River Jhelum. Some Kashmir people are fighting the project.

Suvarrow (Suvarov), an abandoned atoll in the Cooks group, has been photographed from the air by the New Zealand Civil Aviation Administration. The party is also photographing all others of the group for scientific purposes, Rarotonga.

—Frank Cain, Alice Hearn.

Mrs. Dolby—7th Grade

Grades 7 through 12 saw a newsreel Monday morning the second period. It was very interesting and we all enjoyed it.

Paraguay is the country we just finished studying about in social studies. We learned many interesting things about Paraguay. We are doing the statements at the end of the chapter about Argentina, Buenos Aires, Uruguay, and Paraguay.

Mrs. Goodwill—Grade 8

Many of the 8th grade students were pleased with the work the teachers and parents did to make the May Day a success. There will be a student council dance this Friday night. The Drama Club will put on a skit. The May King and Queen will appear with their attendants.

Math Club News

The meeting was called to order by Bonita Porter. The minutes were read and stood approved as read. The roll was called and all were present. We had one new member, Ellen Hill.

There was no old or new business so the meeting was adjourned.

Sophomore News

The Sophomore class would like to thank everyone who helped to make their bake a success. Proceeds amounted to \$221.16.

Hickman

Mr. and Mrs. Harry Gilbert and Mr. and Mrs. Raymond Cannon of Wilmington are spending a few days with Mr. and Mrs. Charlie Stevens.

Mr. and Mrs. Howard Drummond entertained over the weekend, Mr. and Mrs. William Polk, and family, and Mrs. Leonard Gardner of Holidayburg, Pa.

Mrs. Sam Jester and Mr. and Mrs. Joe Filler of Franklinville, N. J., were Saturday visitors of Mr. and Mrs. Olin Melvin and Mr. and Mrs. Clarence Breeding.

Mr. and Mrs. Isaac Noble were Mother's Day dinner guests of their daughter and family, Mr. and Mrs. Wilmer Nagel of Fedtralsburg. Their dinner guests was Miss Delores Girardi, Mr. Nagel left in the afternoon for the Kent General Hospital where he will undergo surgery.

Mrs. Ella Breeding was entertained at dinner Sunday by Mr. and Mrs. Clarence Breeding.

Mr. and Mrs. William Croll entertained at dinner Sunday, Mrs. Paul VanDyke of Dnton, Mrs. Irene Pinder of Salisbury, Mrs. Carrie Bowdle of Harrington, Mrs. Katie Parker and Mrs. Ethel Gallager of Preston. Afternoon visitors were Mr. and Mrs. August Croll and Paul of Fedtralsburg.

Our community was saddened



WATCH REPAIR AT MODERATE PRICES

Our expert craftsmen will put your old watch back into operation... doing the job precisely, quickly and economically.

Sanders Jewelers

114 Lookerman St., DOVER, DEL.

American Express Co. has opened a branch in Belfast—the 404th of the worldwide travel and freight organization.

FOR SALE

I have for sale BIRD BATHS, URNS, large and small; BENCHES and SEATS, all made of concrete that last forever.

You can now secure your CANNA BULBS at Wheeler's. Colors are red or yellow

WHEELER'S

Phone 3541 or 8386 - Harrington

SHIRTS 18c - 5 or more
MENS SUITS \$1.10
LADIES DRESSES \$1.10

Charlie Louie Laundry & Dry Cleaning

Clark Street Harrington, Del.

FOR ALL KINDS OF PRINTING

GET OUR PRICES FIRST

THE HARRINGTON JOURNAL

Phone 3209

HOME OWNED HOME EDITED



The telephone company faces the same basic problems as other businesses

Over the past 10 years, there have been increases in the price of almost everything you buy. And the reasons have been obvious. Wages and the cost of supplies and services all have gone up.

The rising spiral of costs has forced telephone rates up also. But the increase has been less than one-third as much as for most other things. This achievement has been possible only through important advances in telephone science and prudent management.

There is one big difference between raising telephone prices and the prices of other goods and services.

Most companies can raise their prices as soon as earnings decline. As a regulated business—no matter how urgent our need—we cannot do this.

Like any other business, we must stand on our own feet

We face the same basic problems other businesses do. Our freedom from the direct competition of other telephone companies in the areas we serve does not guarantee us satisfactory earnings—or even customers.

Like any other business, we must provide a product people want and are willing to pay for.

Like any other business, we must provide jobs which will enable us to obtain the kind of people we need to run the business.

Like any other business, we must pay taxes.

Like any other business, we must buy supplies and services at current, competitive prices.

Like any other business, we must pay interest on the money we have borrowed. And we must borrow part of the money we need to meet demands for service and to introduce service improvements.

Like any other business, we must pay a reasonable return on the money people have invested in the telephone business.

Like any other business, we must stand on our own feet, pay our own way, solve our own problems.

It is in your interest that we earn enough to expand and pay dividends

It is the simple truth that good earnings for the telephone company are in the best interest of everyone. For the telephone company with good earnings is able to take advantage of new scientific developments and long-range economies beyond the means of the company with poor earnings.

In this era of expansion at inflated prices—and facing the same basic problems as non-regulated businesses—we must have earnings that enable us to help meet expansion requirements and to provide a reasonable return for the investor.

The economic fact remains that we must increase our prices from time to time so long as wages and the cost of all the things we buy continue to go up.

The Diamond State Telephone Company

CITIZENS MEETING

BE IT RESOLVED, by the Council of the City of Harrington that a Citizens Meeting shall be held at the Fire Hall,

Wed., May 21

1958 at 7:30 P. M.

for the purpose of a discussion by the qualified voters of the City of Harrington of the advisability of the creation of a Harrington Sewer and Water Authority to be formed pursuant to Chapter 14, Title 16 of the Delaware Code of 1953, for the purpose of acquiring, constructing, re-constructing, repairing, improving, maintaining and operating the sewer and water system of the City of Harrington.

MAY 5, 1958

BY ORDER OF THE MAYOR

HEWITT W. SMITH, M.D.

FILL DIRT and TOP SOIL

By Load or Job

We Deliver or Will Load Trucks

WILLIAM KILLEN

Phone 4-4229 Felton



RENT SELL BUY TRADE HIRE SERVICE... LOST and FOUND SERVICE... HELP WANTED EMPLOYMENT OPPORTUNITIES

RATE SCHEDULE

All ads in this column must be paid for in advance. This is the only way in which orders will be accepted for less than 75 cents. If you have an ad which you want inserted, count the words (name and address included), and multiply by the number of times you want the ad to run. Send that amount with the advertisement.

FOR SALE WALLPAPER Largest Selection on the Eastern Shore Milford Wallpaper & Paint Co. Phone Milford 8317

Classified Rates

CREDIT SERVICE A bookkeeping charge of 25c will be made for all Classified Ads not paid in advance and an additional charge of 25c for each 30 days bills remain unpaid.

NOTICE WE ARE NOT RESPONSIBLE FOR

Incorrect insertions of classified or display advertisements for more than ONE issue.

LOST

Lost-Tan Pocketbook. Will the finder of a large tan pocketbook with a white cover, please return the valuable papers to Mrs. Mildred J. Biederbeck in care of Mrs. Edward Jester. Phone Felton 4-4653. Reward. It b 5-16 exp.

SERVICES

FOR TERMITE CONTROL All Work Guaranteed Free Estimates Call RAYMOND DEAN Harrington 3539

CESSPOOLS, SEPTIC TANKS, AND GREASE TRAPS CLEANED

Call Milford 8712-Frank F. 1-25

KEEP WARM

NEXT WINTER KENT & SUSSEX OIL HEATING CREDIT ASSOC.

LEGAL NOTICES

NOTICE In pursuance of an order of Clarence E. Dixon, Register of Wills, in and for Kent County, Delaware, dated April 23rd A. D. 1958, notice is hereby given of the granting Letters Testamentary on the estate of Roland V. Stanton on the 23rd day of April A. D. 1958. All persons having claims against the said Roland V. Stanton are required to exhibit the same to such Executrix within nine months after the date of the granting of such Letters, or abide by the law in that behalf which provides that such claims against the said estate not so exhibited shall be forever barred.

LEGAL NOTICES

NOTICE In pursuance of an order of Clarence E. Dixon, Register of Wills, in and for Kent County, Delaware, dated April 23rd A. D. 1958, notice is hereby given of the granting Letters Testamentary on the estate of Roland V. Stanton on the 23rd day of April A. D. 1958. All persons having claims against the said Roland V. Stanton are required to exhibit the same to such Executrix within nine months after the date of the granting of such Letters, or abide by the law in that behalf which provides that such claims against the said estate not so exhibited shall be forever barred.

LEGAL NOTICES

NOTICE In pursuance of an order of Clarence E. Dixon, Register of Wills, in and for Kent County, Delaware, dated April 23rd A. D. 1958, notice is hereby given of the granting Letters Testamentary on the estate of Roland V. Stanton on the 23rd day of April A. D. 1958. All persons having claims against the said Roland V. Stanton are required to exhibit the same to such Executrix within nine months after the date of the granting of such Letters, or abide by the law in that behalf which provides that such claims against the said estate not so exhibited shall be forever barred.

LEGAL NOTICES

NOTICE In pursuance of an order of Clarence E. Dixon, Register of Wills, in and for Kent County, Delaware, dated April 23rd A. D. 1958, notice is hereby given of the granting Letters Testamentary on the estate of Roland V. Stanton on the 23rd day of April A. D. 1958. All persons having claims against the said Roland V. Stanton are required to exhibit the same to such Executrix within nine months after the date of the granting of such Letters, or abide by the law in that behalf which provides that such claims against the said estate not so exhibited shall be forever barred.

LEGAL NOTICES

NOTICE In pursuance of an order of Clarence E. Dixon, Register of Wills, in and for Kent County, Delaware, dated April 23rd A. D. 1958, notice is hereby given of the granting Letters Testamentary on the estate of Roland V. Stanton on the 23rd day of April A. D. 1958. All persons having claims against the said Roland V. Stanton are required to exhibit the same to such Executrix within nine months after the date of the granting of such Letters, or abide by the law in that behalf which provides that such claims against the said estate not so exhibited shall be forever barred.

LEGAL NOTICES

NOTICE In pursuance of an order of Clarence E. Dixon, Register of Wills, in and for Kent County, Delaware, dated April 23rd A. D. 1958, notice is hereby given of the granting Letters Testamentary on the estate of Roland V. Stanton on the 23rd day of April A. D. 1958. All persons having claims against the said Roland V. Stanton are required to exhibit the same to such Executrix within nine months after the date of the granting of such Letters, or abide by the law in that behalf which provides that such claims against the said estate not so exhibited shall be forever barred.

LEGAL NOTICES

NOTICE In pursuance of an order of Clarence E. Dixon, Register of Wills, in and for Kent County, Delaware, dated April 23rd A. D. 1958, notice is hereby given of the granting Letters Testamentary on the estate of Roland V. Stanton on the 23rd day of April A. D. 1958. All persons having claims against the said Roland V. Stanton are required to exhibit the same to such Executrix within nine months after the date of the granting of such Letters, or abide by the law in that behalf which provides that such claims against the said estate not so exhibited shall be forever barred.

LEGAL NOTICES

NOTICE In pursuance of an order of Clarence E. Dixon, Register of Wills, in and for Kent County, Delaware, dated April 23rd A. D. 1958, notice is hereby given of the granting Letters Testamentary on the estate of Roland V. Stanton on the 23rd day of April A. D. 1958. All persons having claims against the said Roland V. Stanton are required to exhibit the same to such Executrix within nine months after the date of the granting of such Letters, or abide by the law in that behalf which provides that such claims against the said estate not so exhibited shall be forever barred.

LEGAL NOTICES

NOTICE In pursuance of an order of Clarence E. Dixon, Register of Wills, in and for Kent County, Delaware, dated April 23rd A. D. 1958, notice is hereby given of the granting Letters Testamentary on the estate of Roland V. Stanton on the 23rd day of April A. D. 1958. All persons having claims against the said Roland V. Stanton are required to exhibit the same to such Executrix within nine months after the date of the granting of such Letters, or abide by the law in that behalf which provides that such claims against the said estate not so exhibited shall be forever barred.

LEGAL NOTICES

NOTICE In pursuance of an order of Clarence E. Dixon, Register of Wills, in and for Kent County, Delaware, dated April 23rd A. D. 1958, notice is hereby given of the granting Letters Testamentary on the estate of Roland V. Stanton on the 23rd day of April A. D. 1958. All persons having claims against the said Roland V. Stanton are required to exhibit the same to such Executrix within nine months after the date of the granting of such Letters, or abide by the law in that behalf which provides that such claims against the said estate not so exhibited shall be forever barred.

LEGAL NOTICES

NOTICE In pursuance of an order of Clarence E. Dixon, Register of Wills, in and for Kent County, Delaware, dated April 23rd A. D. 1958, notice is hereby given of the granting Letters Testamentary on the estate of Roland V. Stanton on the 23rd day of April A. D. 1958. All persons having claims against the said Roland V. Stanton are required to exhibit the same to such Executrix within nine months after the date of the granting of such Letters, or abide by the law in that behalf which provides that such claims against the said estate not so exhibited shall be forever barred.

LEGAL NOTICES

NOTICE In pursuance of an order of Clarence E. Dixon, Register of Wills, in and for Kent County, Delaware, dated April 23rd A. D. 1958, notice is hereby given of the granting Letters Testamentary on the estate of Roland V. Stanton on the 23rd day of April A. D. 1958. All persons having claims against the said Roland V. Stanton are required to exhibit the same to such Executrix within nine months after the date of the granting of such Letters, or abide by the law in that behalf which provides that such claims against the said estate not so exhibited shall be forever barred.

LEGAL NOTICES

NOTICE In pursuance of an order of Clarence E. Dixon, Register of Wills, in and for Kent County, Delaware, dated April 23rd A. D. 1958, notice is hereby given of the granting Letters Testamentary on the estate of Roland V. Stanton on the 23rd day of April A. D. 1958. All persons having claims against the said Roland V. Stanton are required to exhibit the same to such Executrix within nine months after the date of the granting of such Letters, or abide by the law in that behalf which provides that such claims against the said estate not so exhibited shall be forever barred.

LEGAL NOTICE

NOTICE OF REDUCTION OF CAPITAL CAMPBELL BUICK CO.

Pursuant to the provisions of Section 244 of the Delaware General Corporation Law, notice is hereby given that the capital of the above corporation has been reduced from \$79,225.49 to \$65,900.00 by the exchange of 49 shares of Class A stock and 310 shares of Class B stock for 370 shares of Class A stock and 280 shares of Class B stock. A Certificate of Reduction of Capital was filed with the Secretary of State of Delaware on May 7, 1958 and on the same date a certified copy of hereof was filed with the Kent County Recorder of Deeds for the completion of the record in that office, all in accordance with the provisions of said Section 244 of the Delaware General Corporation Law.

LEGAL NOTICE

ESTATE NOTICE Pursuant to an order of Clarence E. Dixon, Register of Wills, in and for Kent County, Delaware, dated April 30, 1958, notice is hereby given of the granting of Letters Testamentary on the estate of Willard J. Dufendach, deceased, on April 30, 1958. All persons having claims against the said Willard J. Dufendach are required to exhibit the same to the undersigned executrix within nine months from the date of the granting of Letters Testamentary or abide by the law in that behalf which provides that such claims against the said estate not so exhibited shall be forever barred.

LEGAL NOTICE

NOTICE OF BIDS Harrington Special School District

Bids will be received by the Harrington Special School District Board of Education for Top Soil Full grading, rolling, and seeding as follows: 1. Grading according to plan and grade as per print in school office, totaling 1,250 acres. 2. Rolling to assure required grade. 3. Seeding 1,250 acres of top soil required 23.5 cu. yds. Bids to be opened 8:00 p.m., June 12, 1958. Board of Education, J. C. Messner, Supt. It b 5-23 exp.

LEGAL NOTICE

NOTICE OF BIDS Harrington Special School District

Bids will be received by the Harrington Special School District Board of Education for Top Soil Full grading, rolling, and seeding as follows: 1. Grading according to plan and grade as per print in school office, totaling 1,250 acres. 2. Rolling to assure required grade. 3. Seeding 1,250 acres of top soil required 23.5 cu. yds. Bids to be opened 8:00 p.m., June 12, 1958. Board of Education, J. C. Messner, Supt. It b 5-23 exp.

Sheriff's Sale

OF VALUABLE Real Estate

By virtue of a writ of Levari Facias, for the sale of land to me directed will be exposed to public sale by way of public vendue, at the front door of The First National Bank and Trust Company in Milford, Kent County, Delaware, on

TUESDAY, MAY 27, 1958

At 2:00 P.M. Daylight Saving Time

ALL that certain lot, piece or parcel of land and premises together with the improvements thereon erected, situated on the easterly side of Church Avenue Extension in the City of Milford, Kent County and State of Delaware, bounded as follows: on the westerly side by the right-of-way line of the westerly side by Lot No. 7 on the plot hereinafter mentioned and returned to the westerly side by Church Avenue Extension, and on the northerly side by Lot No. 9 on the plot hereinafter mentioned and returned to the northerly side by the right-of-way line of Church Avenue Extension, the point of beginning, containing 9,000 square feet of land more or less, and being all of Lot No. 8 on a plot of lots of Charles H. Wilkerson of record in the Recorder of Deeds office in and for Kent County and State of Delaware, in Plot Book 3 Page 36.

LEGAL NOTICE

And being all of the same lands and premises which Charles H. Wilkerson and Elizabeth W. Wilkerson, his wife, by deed dated June 11, 1957, and intended to be herewith recorded granted and conveyed unto Howard Rogers Young and Vivian A. Young, his wife, Mortgage Book K, Vol. 10, Page 241, etc. Assignment Record N-2-55.

LEGAL NOTICE

Improvements thereon being a brick bungalow.

LEGAL NOTICE

Seized and taken in execution as the property of Howard Rogers Young and Vivian A. Young, his wife, and will be sold by

LEGAL NOTICE

THOMAS HUGHES, Sheriff

LEGAL NOTICE

Sheriff's Office, Dover, Delaware May 3, 1958 It b 5-23 exp.

LEGAL NOTICE

IN JUST 15 MINUTES IF YOU HAVE TO SCRATCH YOUR ITCH—

Your itch back at any drug store. Apply ITCHE-NE-OT. It deadens your itch and burning in minutes! Kills germs, fungus on contact. Wonderful for eczema, foot itch, ringworm, insect bites, surface scratches. Today at P. E. Glendening Drug. 3th 5-16 exp.

LEGAL NOTICE

R. & O. KITCHEN CABINET CO., INC. DuPont Hwy Dover 5287 Next to Vane Florist

LEGAL NOTICE

No Money Down Kitchen Cabinets, Tappan built-in ranges, ovens, hoods & fans, Formica Countertops, refrigerators, can openers, radios, in-Bilt mixers (in countertop), built-in Kitchen Caddy (for washed paper, foil, towels). Also all new line of dinette sets (custom made to your colors and materials). Come in for free demonstrations or call representative. S & H Green Camps It b 5-9

LEGAL NOTICE

NOTICE OF REDUCTION OF CAPITAL JACKSON OLDSMOBILE, INC.

Pursuant to the provisions of Section 244 of the Delaware General Corporation Law, notice is hereby given that the capital of the above corporation has been reduced from \$1,577.50 to \$74,175.81 by the transfer of \$2,019.99 of its capital surplus to earned surplus and the redemption for retirement of 49 shares of Class A stock. A Certificate of Reduction of Capital was filed with the Secretary of State of Delaware on May 1, 1958 and on the same date a certified copy thereof was filed with the Kent County Recorder of Deeds for the completion of the record in that office, all in accordance with the provisions of said Section 244 of the Delaware General Corporation Law.

LEGAL NOTICE

JACKSON OLDSMOBILE, INC. By Leland Jackson, President It b 5-23 exp.

PUBLIC SALE

Contractor's Equipment

I will sell at Public Sale the contracting Equipment and supplies of the late Shelby D. Collins, at my residence in Port Penn, Del., on

PUBLIC SALE OF

MASONRY BUNGALOWS

The State Highway Department of the State of Delaware will offer at Public Auction Sale, on the site, the following masonry bungalows, on

PUBLIC SALE OF

MASONRY BUNGALOWS

The State Highway Department of the State of Delaware will offer at Public Auction Sale, on the site, the following masonry bungalows, on

PUBLIC SALE

DAIRY CATTLE and FARM MACHINERY

Because of the death of my husband I will sell at public auction on my farm located 7 miles Northwest of Felton. It being on the Felton-Sandtown road, going west out of Felton, turn right on the Felton-Sandtown road and my farm is 3 miles from the intersection on the left.

PUBLIC SALE

DAIRY CATTLE and FARM MACHINERY

Because of the death of my husband I will sell at public auction on my farm located 7 miles Northwest of Felton. It being on the Felton-Sandtown road, going west out of Felton, turn right on the Felton-Sandtown road and my farm is 3 miles from the intersection on the left.

PUBLIC SALE

DAIRY CATTLE and FARM MACHINERY

Because of the death of my husband I will sell at public auction on my farm located 7 miles Northwest of Felton. It being on the Felton-Sandtown road, going west out of Felton, turn right on the Felton-Sandtown road and my farm is 3 miles from the intersection on the left.

PUBLIC SALE

DAIRY CATTLE and FARM MACHINERY

Because of the death of my husband I will sell at public auction on my farm located 7 miles Northwest of Felton. It being on the Felton-Sandtown road, going west out of Felton, turn right on the Felton-Sandtown road and my farm is 3 miles from the intersection on the left.

PUBLIC SALE

DAIRY CATTLE and FARM MACHINERY

Because of the death of my husband I will sell at public auction on my farm located 7 miles Northwest of Felton. It being on the Felton-Sandtown road, going west out of Felton, turn right on the Felton-Sandtown road and my farm is 3 miles from the intersection on the left.

PUBLIC SALE

DAIRY CATTLE and FARM MACHINERY

Because of the death of my husband I will sell at public auction on my farm located 7 miles Northwest of Felton. It being on the Felton-Sandtown road, going west out of Felton, turn right on the Felton-Sandtown road and my farm is 3 miles from the intersection on the left.

PUBLIC SALE

DAIRY CATTLE and FARM MACHINERY

Because of the death of my husband I will sell at public auction on my farm located 7 miles Northwest of Felton. It being on the Felton-Sandtown road, going west out of Felton, turn right on the Felton-Sandtown road and my farm is 3 miles from the intersection on the left.

PUBLIC SALE

DAIRY CATTLE and FARM MACHINERY

Because of the death of my husband I will sell at public auction on my farm located 7 miles Northwest of Felton. It being on the Felton-Sandtown road, going west out of Felton, turn right on the Felton-Sandtown road and my farm is 3 miles from the intersection on the left.

PUBLIC SALE

DAIRY CATTLE and FARM MACHINERY

Because of the death of my husband I will sell at public auction on my farm located 7 miles Northwest of Felton. It being on the Felton-Sandtown road, going west out of Felton, turn right on the Felton-Sandtown road and my farm is 3 miles from the intersection on the left.

PUBLIC SALE

DAIRY CATTLE and FARM MACHINERY

Because of the death of my husband I will sell at public auction on my farm located 7 miles Northwest of Felton. It being on the Felton-Sandtown road, going west out of Felton, turn right on the Felton-Sandtown road and my farm is 3 miles from the intersection on the left.

PUBLIC SALE

DAIRY CATTLE and FARM MACHINERY

Because of the death of my husband I will sell at public auction on my farm located 7 miles Northwest of Felton. It being on the Felton-Sandtown road, going west out of Felton, turn right on the Felton-Sandtown road and my farm is 3 miles from the intersection on the left.

PUBLIC SALE

DAIRY CATTLE and FARM MACHINERY

Because of the death of my husband I will sell at public auction on my farm located 7 miles Northwest of Felton. It being on the Felton-Sandtown road, going west out of Felton, turn right on the Felton-Sandtown road and my farm is 3 miles from the intersection on the left.

PUBLIC SALE

DAIRY CATTLE and FARM MACHINERY

Because of the death of my husband I will sell at public auction on my farm located 7 miles Northwest of Felton. It being on the Felton-Sandtown road, going west out of Felton, turn right on the Felton-Sandtown road and my farm is 3 miles from the intersection on the left.

PUBLIC SALE OF

MASONRY BUNGALOWS

The State Highway Department of the State of Delaware will offer at Public Auction Sale, on the site, the following masonry bungalows, on

PUBLIC SALE OF

MASONRY BUNGALOWS

The State Highway Department of the State of Delaware will offer at Public Auction Sale, on the site, the following masonry bungalows, on

PUBLIC SALE OF

MASONRY BUNGALOWS

The State Highway Department of the State of Delaware will offer at Public Auction Sale, on the site, the following masonry bungalows, on

PUBLIC SALE OF

MASONRY BUNGALOWS

The State Highway Department of the State of Delaware will offer at Public Auction Sale, on the site, the following masonry bungalows, on

PUBLIC SALE OF

MASONRY BUNGALOWS

The State Highway Department of the State of Delaware will offer at Public Auction Sale, on the site, the following masonry bungalows, on

PUBLIC SALE OF

MASONRY BUNGALOWS

The State Highway Department of the State of Delaware will offer at Public Auction Sale, on the site, the following masonry bungalows, on

PUBLIC SALE OF

MASONRY BUNGALOWS

The State Highway Department of the State of Delaware will offer at Public Auction Sale, on the site, the following masonry bungalows, on

PUBLIC SALE OF

MASONRY BUNGALOWS

The State Highway Department of the State of Delaware will offer at Public Auction Sale, on the site, the following masonry bungalows, on

PUBLIC SALE OF

MASONRY BUNGALOWS

The State Highway Department of the State of Delaware will offer at Public Auction Sale, on the site, the following masonry bungalows, on

PUBLIC SALE OF

MASONRY BUNGALOWS

The State Highway Department of the State of Delaware will offer at Public Auction Sale, on the site, the following masonry bungalows, on

PUBLIC SALE OF

MASONRY BUNGALOWS

The State Highway Department of the State of Delaware will offer at Public Auction Sale, on the site, the following masonry bungalows, on

PUBLIC SALE OF

MASONRY BUNGALOWS

The State Highway Department of the State of Delaware will offer at Public Auction Sale, on the site, the following masonry bungalows, on

PUBLIC SALE OF

MASONRY BUNGALOWS

The State Highway Department of the State of Delaware will offer at Public Auction Sale, on the site, the following masonry bungalows, on

PUBLIC SALE OF

MASONRY BUNGALOWS

The State Highway Department of the State of Delaware will offer at Public Auction Sale, on the site, the following masonry bungalows, on

PUBLIC SALE OF

MASONRY BUNGALOWS

The State Highway Department of the State of Delaware will offer at Public Auction Sale, on the site, the following masonry bungalows, on

PUBLIC SALE OF

MASONRY BUNGALOWS

The State Highway Department of the State of Delaware will offer at Public Auction Sale, on the site, the following masonry bungalows, on

Student Council

Interest in the student council election to be held Friday, is running high, with bulletin boards filled with posters and pupils sporting badges urging the election of various candidates for student council and student courts.

Student Council

Nominees for the offices to be filled are as follows: Student Council — President, Dale Hammond and Wallace Caulk; vice president, Lois Dill and John Kates; treasurer, Earl Walters, Dawson Richards, Barbara Hoffer; secretary, Jimmy Reed, Bobby Donaway, Kathleen Anderson, Jimmy Torbert.

Student Council

Student Court— Chief Justice, Ronnie Jester and Mary Ellen Hughes; 12th Associate Justice, Judy Weinberg and Marlene Hughes; 11th Associate Justice, Nancy Ludlow, Edith Postles; 10th Associate Justice, Paul Caulk, Carol Wright, Jay McGinnis; 9th Associate Justice, Curtis Webb, William O'Day.

Student Council

The final meeting of the Avon Club for the season was held in the fire hall last Wednesday afternoon at which time Mrs. Harold Schabinger was installed as president. The other officers installed are Mrs. Marion McGinnis, first vice president; Mrs. Nelson Hammond, second vice president; Mrs. Lott Ludlow, recording secretary; Mrs. Barratt Simpler, corresponding secretary, Mrs. Virginia C. Morrow, treasurer and Mrs. Richard Hardy, director. The officers were in stilled by the outgoing president, Mrs. Hardy. Mrs. Hardy was installed by Mrs. Leland Price, a past president of the club.

Student Council

A tea followed the installation of officers. A president's



Farmington

Mrs. and Mrs. Milton Pratt, Mr. and Mrs. Harold Alexander and daughter, Marjorie, of Linwood, Pa., Mrs. Marjorie Turner and daughter of Smyrna, Mr. and Mrs. Edwin East of Seaford, Mrs. Charles Virdin of Wilmington, and Mr. and Mrs. Samuel Andrew were entertained at a turkey dinner Sunday by Mr. and Mrs. William Gray and Mr. and Mrs. William Messick.

The W.S.C.S. bake at the Farmington Fire House was a success. The women would like to thank all those who donated so willingly.

William Bradley is in the Milford Memorial Hospital.

Mr. and Mrs. Thomas Biddle of New York City are spending some time in their summer cottage in Farmington.

Mr. and Mrs. William Gray and Mrs. Samuel Andrew visited Mrs. Mae Sweegan at Seaford Sunday morning.

Miss Lou Fox of Philadelphia is visiting Mr. and Mrs. David Grant for a few weeks.

Mrs. Pearl Derrickson of Harrington visited her sister, Mrs. Jessie Smith Monday.

Mr. and Mrs. Preston Kenton and family visited her mother Sunday.

Mrs. Lois Wheatley of Bridgeville visited her aunt, Mrs. Willis Laughery Monday.

Cheryl Smith has the measles. Donald Hamilton and Jeff Rust have had the chicken pox and measles.

Billy Draper celebrated his third birthday Sunday.

Lewis Edward Slater, son of Mr. and Mrs. George Dallas Slater, and Miss Mary Wood were married at the Church of the Nazarene in Harrington, May 7 at 9 p.m. by the Rev. Mrs. Lorraine Ottinger. Bridesmaid was Mrs. Eloise Slater and best man was Franklin Slater. There was a bridal shower at the home of Mrs. Florence Wood, Friday, May 9.

Burrsville

Wesley Sunday School 10 a.m., Norman Outten superintendent. Union Sunday School 10 a.m., Robert Collins, superintendent. There will be no worship service this Sunday.

The W.S.C.S. of Wesley Church will be held in the Community house Thursday.

Reta Collison, Kenneth Willis, and Eugene Eike, went to New York City with the graduating class from Denton High School Wednesday and returned Sunday. Eleanor Baker went with the graduating class of Harrington High School also.

Sarah Thawley student nurse at the Union Memorial Hospital, was home over the weekend. Sarah is the daughter of Mr. and Mrs. Houston Thawley.

Mrs. Harlan Blades had the misfortune to break her arm recently.

Mr. and Mrs. Donald Rapp and sister of Denton, were visitors of Mr. and Mrs. Paul Butler Saturday afternoon and evening.

Mrs. Francis Baker visited her parents, Mr. and Mrs. Simon Bullock, Sunday.

Mr. and Mrs. James Hopkins of near Frederica visited his parents and sister, Mr. and Mrs. Howard Hopkins and Pauline, and on Sunday, Mr. and Mrs. Dick Gooden of near Dover visited the Hopkins.

Mr. and Mrs. Charley Welch spent the weekend with the Rev. and Mrs. Manuel Buarque and family at Vienna and attended Mother's Day services there.

Mr. and Mrs. Harvey Griffith of Broomall, Pa., visited her brother and family, Mr. and Mrs. Robert Garrett Sunday.

Mr. and Mrs. Edwin Baker and Mr. and Mrs. Lawrence Collison and family were guests of Mr. and Mrs. Carroll Williams of near Crumpton Sunday.

Mrs. Dorothy Schaeffer and daughter, of near Denton, spent the evening Sunday with Mr. and Mrs. Winfield Willis and daughters.

Hobbs

Our W.S.C.S. will meet with Mrs. Louise Sharp Wednesday evening May 28.

Mr. and Mrs. Eugene Tedley and Gina, Federalsburg, visited Mrs. Roland Towers and family, last Thursday.

John Corkell, an Easton Hospital patient, returned to his home near here one day last week.

Mrs. T. H. Towers called on Mrs. J. R. Ricard and Mrs. B. B. Allen, Denton, last Thursday afternoon.

Mr. and Mrs. L. H. Thomas called on Mrs. James C. Hardesty, Sunday afternoon. The trio visited her brother, C. E. Beauchamp and family.

Mr. and Mrs. Wesley Stafford, Ronney and Dale, were Sunday afternoon guests of her mother, Mrs. Mae Wright, Denton.

Charlie Maloney was a Saturday guest of the Tower boys.

Mrs. Stephen Adams has been visiting Mr. and Mrs. Frank Fountain.

Mr. and Mrs. L. Hopkins Thomas and Tommy Lee were guests of Mr. and Mrs. L. H. Thomas, one evening last week.

Miss Ellen Butler, Washington, D. C., spent last weekend with her parents, Mr. and Mrs. Elmer Butler.

Mr. and Mrs. Russell Stafford and Elma Jean, were Sunday evening guests of Mr. and Mrs. Wesley Stafford and family.

Pfc. Franklin Perry, Camp Lejeune, N. C., spent last weekend at his home here.

Mr. and Mrs. L. H. Thomas called on Mrs. B. B. Allen Sunday evening. Mrs. Bertha Wright and Miss Catherine Stewart were guests also.

Linda Reese, and Allen Stafford spent Saturday with their grandmother, Mrs. Redmond Long.

Hayward Henry, Cincinnati, O., visited his father, O. H. Henry, last week.

Mr. and Mrs. Elmer Butler, Ellen and Ann, were Sunday evening guests of the Russell Stevens family of Burrsville.

Mr. and Mrs. Eddie Willis were Saturday evening guests of Mr. and Mrs. Jimmy Corkell and family.

Wilson, Hackett and Schiff Double Winners in H.H.S. Win Over Laurel Track Team

By Keith S. Burgess

The Harrington High track team defeated Laurel High on the local field 75-29 on Monday afternoon. The home team junior high boys won their meet also 44 1/3 - 22 1/3.

Bob Wilson the teams leading scorer again led the home forces with 19 points amassed by winning the shot put and javelin and placing second in the 100,220 and broad jump, tossing the spear 131 feet. Joe Kliment had a tough break in this event as he had a throw of 135 feet called back when he barely stepped over the foul line.

Dwight Hackett turned in victories in the mile and half mile, running just hard enough to win in the latter. Dwight is unbeaten in the mile this year.

Jimmy Schiff unbeaten this year in the sprints turned in easy victories in the 100 and 220. Jimmy also ran the first leg of the mile relay in 57.5 to give Harrington a good lead which held up.

Other first place winners for H. H. S. were Dave Welch in the high jump and Don Garey in the pole vault.

Coach Jeffers was well pleased with the performances of Bob Bonniwell and Harry Knotts both freshmen. Bob was second in the 440 and Harry took second to Hackett in the mile. He also noted the improvement of Phil Holson who shone in the discus and javelin.

The most exciting race of the meet was the mile relay. After Schiff and Coady ran the first two legs giving H.H.S. the lead Coach Jeffers inserted two substitutes for the last two legs since they needed more experience. At the finish the Harrington margin of victory was the proverbial hair.

In the junior high meet Walter LeKites, George Pfeiffer and Dave Martin had first places. Leonard Hurd, an improving performer, and Bob Winkler, another good bet for the future, each scored in two events for Harrington. The relay team of Pfeiffer, LeKites, Winkler and Edgar Wheeler also won with Wheeler making up a deficit of several yards to give the locals the lead which the last two runners held to the finish. The juniors have victories over Seaford, Caesar Rodney, Millsboro and Laurel, losing only to Milford on a day when they loaned two of their key men to the varsity.

THE RESULTS — SR. HIGH 100—Schiff (H), Wilson (H), Dulis (L) — 10.5 220—Schiff (H), Wilson (H), Hastings (L) — 23.8 440—Dulis (L), Bonniwell (H), Coady (H) — 58.1 880—Hackett (H), Pepper (L), Manship (H) — 2:28.6 Mile—Hackett (H), Knotts (H), Carmean (L) — 5:08 Broad Jump—Dulis (L), Wilson (H), Kliment (H) — 18 ft. 1 in. High Jump—Welch (H), Taylor (H), West (L) — 5 ft. 2 in. Pole Vault—Garey (H), Jones (L), Orendorf (L) — 9 ft. 6 in. Shot—Wilson (H), Coady (H), Chester (L) — 37 ft. 6 in. Javelin—Wilson (H), Kliment (H), Holson (H) — 131 ft. Mile Relay—(H) (Schiff, Coady, Welch, Holson) — 5:05.1

Russian engineers in Moscow claim to have built "ornithopters"—aircraft with flapping wings. The light planes are powered either by engine or by "muscle-power" and a small auxiliary engine.

LEVY COURTS MEET TO STUDY PAYMENT OF WELFARE FUNDS

A Friday night meeting of the three county levy courts with attorneys and state legislators in Dover was held to discuss changing the public welfare laws to relieve the counties of the burden of having to contribute to the welfare program.

The counties are required by law to come up with half the cost of general assistance (relief) and a percentage of the cost of aid to dependent children. The latter category involves federal funds, however, as well as state and local, and consequently any changes in this category must comply with federal regulations or the federal government withdraws its funds.

Edgar Hare Jr., state director of public welfare, Saturday, offered "if anyone wants me to," to bring in a legal representative of the Department of Health, Education and Welfare, to assist in drawing up the sought-after legislation.

It had been announced that the purpose of Friday's meeting was to prepare legislation to take the burden off the counties, but the only flat proposal came from Joseph F. Dayton, president of the New Castle County Levy Court.

Mr. Dayton said he intends to see to it that all healthy and able-bodied men receiving relief assistance work out their assistance at going labor rates in parks, cutting grass, cleaning up, and generally beautifying the parklands.

Hare said the law permits this and that the idea could be worked out. In general, it would involve the Levy Court's giving the Welfare Department information regarding the location, date, and time, and the amount of work involved.

Then, with considerable arithmetic because the amounts of grants vary, the Welfare Department would select individuals and assign them to the jobs. There would also have to be a system of checking and reporting set up.

Mostly Refresh

Most of the rest of the suggestions put forth were a refresh of those made several times by several persons during the past few days:

1. A ceiling should be placed in the amounts the counties can be forced to contribute. Present welfare laws require the counties to meet the needs regardless of budget considerations.

2. The Levy Courts should be empowered to fix their own ceilings and the state compelled to match them.

3. The Levy Courts should hold the power of veto over all relief grants.

4. The present manner of giving the Welfare Department a "blank check" on the counties must be ended.

There were the usual number of statements about the numbers of "chislers" and other ineligible on the relief rolls, and Fred M. Williams, a member of the Kent County Levy Court who resigned recently as a member of the State Board of Welfare, said he had personally investigated six cases of ineligible receiving assistance within the past few days.

Of Local Interest

Mr. and Mrs. Charles Massey of Lewes, Mr. and Mrs. U. Miller of Laurel and Mr. and Mrs. W. R. Massey of Harrington were dinner guests of Mr. and Mrs. Isaac Lowe of Cambridge, Md., Sunday.

Mrs. Ernest M. Smith and Mr. and Mrs. Milton Sullivan, of Milford visited their father, Harry Sullivan in the Delaware Hospital Wednesday afternoon.

Mr. and Mrs. Calvin Wells entertained their Bridge Club Tuesday evening.

Mrs. Ernest Raughley entertained her bridge club on Wednesday evening.

Mrs. Lyda Thorpe and Mrs. Agnes Klapp and children visited Mrs. William Cooper of Ridgely Sunday.

Mrs. Clarence Jarrell entertained the Mothers Auxiliary of the Choirs of the Asbury Church Tuesday evening.

Mr. and Mrs. James Walter Short and Mr. and Mrs. Bill Graden of Philadelphia were dinner guests of Mrs. Fred Greenly Sunday.

Mrs. Ernest M. Smith's father, Harry Sullivan, is in the Delaware Hospital, Wilmington, suffering a fractured vertebrae of the neck and bruises of the face.

Kenneth Cain, Miss Florence Smith, and Mrs. William Cain spent Saturday in Wilmington.

Mr. and Mrs. H. E. Quillen and Mr. and Mrs. R. Harry Quillen spent Sunday in Ocean View with Mrs. Sallie Quillen.

Mr. and Mrs. Homer Stafford of Chester spent Sunday with their daughter and son-in-law, Mr. and Mrs. Novelle McReynolds.

Mrs. Brown Smith entertained several of her friends of Frederica and Harrington to luncheon and bridge last week.

Mr. and Mrs. Charles O'Neal spent Sunday with his mother, Mrs. Frank O'Neal Sr.

Mr. and Mrs. Victor Keeler visited her mother, Mrs. Frank O'Neal Sr. Monday.

Mr. and Mrs. William Kohel and family spent Sunday with Mrs. Kohel's parents, Mr. and Mrs. Clarence Clogg of Berlin, Md.

Mr. and Mrs. William McCabe spent Sunday in Dover with their daughter, Mrs. Sara Behen.

Mr. and Mrs. William Outten, attended the 15th class reunion of Mrs. Outten's high school graduating class of Laurel.

Mr. and Mrs. Eugene Anderson spent the weekend in Richmond, Va., visiting relatives.

Mr. and Mrs. George Graham Jr., of Charleston, W. Va., are spending a few days with his parents Mr. and Mrs. George Graham, Sr.

John Higginson of Alexandria, Va., formerly a resident of Harrington, was in town Sunday. In the afternoon, Byron Burgess accompanied him to Rehoboth Beach.

Mr. and Mrs. Lawrence Sullivan and Mrs. Virginia Clarkson attended the funeral of Mrs. James Godwin of Dover, Sunday.

Harvey Nixon of Chester, Pa. Mr. and Mrs. William Moore and Mrs. Anna Wyatt of Wilmington, visited Mrs. Virginia Clarkson Sunday afternoon.

Mrs. Percy Leinsz of Preston spent last Tuesday with Mr. and Mrs. Oscar Gillette.

Mrs. Margaret Saunders is spending some time with her sister, Mrs. Oscar Gillette.

Mr. and Mrs. Keith Burgess and son, Matt, were Sunday dinner guests of Mrs. Burgess' parents, Mr. and Mrs. Nelson Melvin.

Mrs. William R. Wechtenhiser and Mrs. William G. Wechtenhiser attended the banquet of the past president of the Rehoboth assembly held at the Hub Restaurant Saturday evening.

The Rachel Rebekeh Lodge will meet Friday night for a covered dish luncheon.

Mr. and Mrs. William R. Wechtenhiser entertained at dinner their parents, Mrs. Stella Sapp and daughter, Barbara of Houston and Mr. and Mrs. William G. Wechtenhiser Sunday.

Mr. and Mrs. Fulton J. Downing and daughter, Frances, were in Rehoboth Sunday.

Mrs. Cora Harrison has returned to Harrington after spending three weeks with her daughter and son-in-law, Mr. and Mrs. Wilson Sockrider of Milford.

Mrs. Ernest M. Smith and Mrs. Golda Smith visited Mr. and Mrs. George Cherry in Ridgely Wednesday evening.

MRS. GEORGE H. TOON

Mrs. Beatrice N. Toon, 80, died Saturday at the home of her daughter, Mrs. John P. Yocum, Felton, where she had been visiting three months.

She lived at 167 Carlisle Road, Audubon, N. J., and was the wife of Lt. Comdr. George H. Toon, of the Coast Guard who died in 1950.

In addition to the daughter with whom she was staying, the deceased is survived by two other daughters, Mrs. Mona Shilow, Camden, N. J., and Mrs. Betty Goff, Pawtucket, R. I., and two sons, George H., Jr., Sicklerville, N. J., and Charles A. of Blackwood, N. J. She also leaves 16 grandchildren and eight great-grandchildren.

Funeral services were held Wednesday at 2:30 p.m. in the Foster Funeral Home, Audubon. Interment was in Locustwood Memorial Park, Delaware, Camden County, N. J.

Funeral services were held Wednesday at 2:30 p.m. in the Foster Funeral Home, Audubon. Interment was in Locustwood Memorial Park, Delaware, Camden County, N. J.

Funeral services were held Wednesday at 2:30 p.m. in the Foster Funeral Home, Audubon. Interment was in Locustwood Memorial Park, Delaware, Camden County, N. J.

Funeral services were held Wednesday at 2:30 p.m. in the Foster Funeral Home, Audubon. Interment was in Locustwood Memorial Park, Delaware, Camden County, N. J.

Funeral services were held Wednesday at 2:30 p.m. in the Foster Funeral Home, Audubon. Interment was in Locustwood Memorial Park, Delaware, Camden County, N. J.

Funeral services were held Wednesday at 2:30 p.m. in the Foster Funeral Home, Audubon. Interment was in Locustwood Memorial Park, Delaware, Camden County, N. J.

Funeral services were held Wednesday at 2:30 p.m. in the Foster Funeral Home, Audubon. Interment was in Locustwood Memorial Park, Delaware, Camden County, N. J.

Funeral services were held Wednesday at 2:30 p.m. in the Foster Funeral Home, Audubon. Interment was in Locustwood Memorial Park, Delaware, Camden County, N. J.

Funeral services were held Wednesday at 2:30 p.m. in the Foster Funeral Home, Audubon. Interment was in Locustwood Memorial Park, Delaware, Camden County, N. J.

Funeral services were held Wednesday at 2:30 p.m. in the Foster Funeral Home, Audubon. Interment was in Locustwood Memorial Park, Delaware, Camden County, N. J.

Funeral services were held Wednesday at 2:30 p.m. in the Foster Funeral Home, Audubon. Interment was in Locustwood Memorial Park, Delaware, Camden County, N. J.

Funeral services were held Wednesday at 2:30 p.m. in the Foster Funeral Home, Audubon. Interment was in Locustwood Memorial Park, Delaware, Camden County, N. J.

Funeral services were held Wednesday at 2:30 p.m. in the Foster Funeral Home, Audubon. Interment was in Locustwood Memorial Park, Delaware, Camden County, N. J.

Funeral services were held Wednesday at 2:30 p.m. in the Foster Funeral Home, Audubon. Interment was in Locustwood Memorial Park, Delaware, Camden County, N. J.

Funeral services were held Wednesday at 2:30 p.m. in the Foster Funeral Home, Audubon. Interment was in Locustwood Memorial Park, Delaware, Camden County, N. J.

Funeral services were held Wednesday at 2:30 p.m. in the Foster Funeral Home, Audubon. Interment was in Locustwood Memorial Park, Delaware, Camden County, N. J.

Funeral services were held Wednesday at 2:30 p.m. in the Foster Funeral Home, Audubon. Interment was in Locustwood Memorial Park, Delaware, Camden County, N. J.

Funeral services were held Wednesday at 2:30 p.m. in the Foster Funeral Home, Audubon. Interment was in Locustwood Memorial Park, Delaware, Camden County, N. J.

Funeral services were held Wednesday at 2:30 p.m. in the Foster Funeral Home, Audubon. Interment was in Locustwood Memorial Park, Delaware, Camden County, N. J.

Funeral services were held Wednesday at 2:30 p.m. in the Foster Funeral Home, Audubon. Interment was in Locustwood Memorial Park, Delaware, Camden County, N. J.

Funeral services were held Wednesday at 2:30 p.m. in the Foster Funeral Home, Audubon. Interment was in Locustwood Memorial Park, Delaware, Camden County, N. J.

Funeral services were held Wednesday at 2:30 p.m. in the Foster Funeral Home, Audubon. Interment was in Locustwood Memorial Park, Delaware, Camden County, N. J.

Funeral services were held Wednesday at 2:30 p.m. in the Foster Funeral Home, Audubon. Interment was in Locustwood Memorial Park, Delaware, Camden County, N. J.

Funeral services were held Wednesday at 2:30 p.m. in the Foster Funeral Home, Audubon. Interment was in Locustwood Memorial Park, Delaware, Camden County, N. J.

Funeral services were held Wednesday at 2:30 p.m. in the Foster Funeral Home, Audubon. Interment was in Locustwood Memorial Park, Delaware, Camden County, N. J.

Funeral services were held Wednesday at 2:30 p.m. in the Foster Funeral Home, Audubon. Interment was in Locustwood Memorial Park, Delaware, Camden County, N. J.

Funeral services were held Wednesday at 2:30 p.m. in the Foster Funeral Home, Audubon. Interment was in Locustwood Memorial Park, Delaware, Camden County, N. J.

Funeral services were held Wednesday at 2:30 p.m. in the Foster Funeral Home, Audubon. Interment was in Locustwood Memorial Park, Delaware, Camden County, N. J.

Funeral services were held Wednesday at 2:30 p.m. in the Foster Funeral Home, Audubon. Interment was in Locustwood Memorial Park, Delaware, Camden County, N. J.

Funeral services were held Wednesday at 2:30 p.m. in the Foster Funeral Home, Audubon. Interment was in Locustwood Memorial Park, Delaware, Camden County, N. J.

Funeral services were held Wednesday at 2:30 p.m. in the Foster Funeral Home, Audubon. Interment was in Locustwood Memorial Park, Delaware, Camden County, N. J.

Funeral services were held Wednesday at 2:30 p.m. in the Foster Funeral Home, Audubon. Interment was in Locustwood Memorial Park, Delaware, Camden County, N. J.

Funeral services were held Wednesday at 2:30 p.m. in the Foster Funeral Home, Audubon. Interment was in Locustwood Memorial Park, Delaware, Camden County, N. J.

SHOP AND SWAP IN THE WANT ADS

\*\*\*\*\* WALLPAPER \*\*\*\*\* We are still selling wallpaper. Just received new shipment today. Wallpaper will continue to be sold in same building. \*\*\*\*\* WHEELER'S \*\*\*\*\* Phone 3521 or 8386 - Harrington \*\*\*\*\*

\*\*\*\*\* WERE EVERYBODY GOES \*\*\*\*\* REESE \*\*\*\*\* MOVIE CENTER \*\*\*\*\* DEL. AND THEATRE - HARRINGTON \*\*\*\*\*

\*\*\*\*\* THE 7 DWARFS \*\*\*\*\* in Technicolor — plus Disney's "SAMOA" and Cartoon — also in color. \*\*\*\*\*

\*\*\*\*\* MARJORIE MORNINGSTAR \*\*\*\*\* in Color! \*\*\*\*\*

\*\*\*\*\* "GIFT OF LOVE" \*\*\*\*\* in Color \*\*\*\*\*

\*\*\*\*\* "UNDER FIRE" \*\*\*\*\*

\*\*\*\*\* "SEVEN GUNS TO MESA" \*\*\*\*\*

\*\*\*\*\* "FUTURE BASEBALL CHAMPIONS" \*\*\*\*\*

\*\*\*\*\* "SNOW WHITE and the Seven Dwarfs" \*\*\*\*\* color by TECHNICOLOR \*\*\*\*\*

\*\*\*\*\* "COWBOY" \*\*\*\*\* starring GLENN FORD - JACK LEMMON \*\*\*\*\*

\*\*\*\*\* "Ma and Pa Kettle at Waikiki" \*\*\*\*\*

\*\*\*\*\* "RIDE A VIOLENT MILE" \*\*\*\*\*

\*\*\*\*\* "QUANTRILL'S RAIDERS" \*\*\*\*\*

\*\*\*\*\* "HIGH HELL" \*\*\*\*\*

Super 113 DRIVE-IN Theatre Milford, Del. Adults, 60 cents; Children under 12 FREE SHOW STARTS 8:00 P.M. (E.D.T.)

THURS., FRI. & SAT., MAY 15, 16 & 17

SUNDAY & MONDAY, MAY 18 & 19

Joey and his Pals RITA HAYWORTH FRANK SINATRA KIM NOVAK Pal Joey TECHNICOLOUR

the hilarious lowdown on society high life! Bing Crosby Grace Kelly Frank Sinatra High Society

Rory CALHOUN Anne FRANCIS THE HIRED GUN

NIGHTFALL ALDO RAY ANNE BANCROFT BRIAN KEITH

TUESDAY & WEDNESDAY, MAY 20 & 21

Just say you love me... you don't have to mean it! the Bachelor Party DON MURRAY with E. G. MARSHALL - JACK WARDEN

the VIRGINIAN IN 1946 TECHNICOLOR

\*\*\*\*\*

VICTOR MATURE in THE SHARKWRIGHTERS CINEMA SCOPE TECHNICOLOUR

Sun., May 18

1. Odongo COLUMBIA PICTURES presents Odongo FLEMING - CAREY

2. CHORUS CUTIE INHERITS GANGLAND EMPIRE! Frankie LAINE Lucy MARLOW He Laughed Last COLUMBIA PICTURES

ROLLER SKATING Thru the Week

FIRST STAGE SHOW, SUNDAY, JUNE 1 featuring PETE PIKE from WRVA, Richmond, Va.

THE HARRINGTON JOURNAL

Phones 3206 and 3209 Harrington, Del.

NOTICE

On and after the first day of June A.D. 1958 all State license fees for the year 1958 are due and payable to the State Tax Department at Old State House, Dover, Kent County, Delaware, and if not paid on or before the 30th day of June 1958, a penalty of five per centum will be added. On all licenses not paid in July an additional penalty of ten per centum will be added, and on all licenses not paid during the month of August a further penalty of ten per centum will be added, making a total of twenty-five per centum on all licenses paid after the month of August, in accordance with the Delaware Code of 1953.

ALEXANDER R. ABRAHAMS, State Tax Commissioner

PAINT ROOMS EASIER with REGAL WALL SATIN Benjamin Moore & Co. \$4.95 per gal.

TAYLOR HARDWARE

Phone 3634 Harrington, Del.