

## \$140,000 FIRE HITS THREE MILFORD STORES

An estimated 150 volunteer firemen struggled three hours in wind and cold Friday to overcome a downtown Milford fire which swept through three businesses, causing damage estimated by Fire Chief James G. Holzmueller at between \$120,000 and \$140,000.

Ruined by the flames, smoke, and water were the Bata Shoe Store, where \$40,000 had recently been spent on alterations; Breerton Drug Store and Quality Market. It was at the latter store that a man delivering bread spotted the flames about 7 a.m. and gave the alarm. All the stores are on Walnut Street, Milford's main business artery.

Firemen believe the blaze, cause unknown, started on the second floor of the market and spread along the roof to the drug store, adjoining to the south, and to the shoe store on the north.

Chief Holzmueller of the Carlisle Fire Company, Milford, who directed the operations of seven combined fire companies, credited the volunteers with doing a "magnificent job."

When the fire was first discovered it was feared it would spread through the entire block as far as the Mispillion River which divides Milford into its Kent County and Sussex County sections. The fire was on the Kent side.

Helping Milford at the scene were firemen and equipment from Houston, Ellendale, Lincoln, Harrington, Greenwood, and Frederica. Alerted and on a stand-by basis were Dover, Magnolia, Bridgeville, and Bowers.

Dover moved trucks to Frederica to cover for that company and while there the Dover firemen put out a small blaze. Harrington's company put out a fire in a car in Milford on the way to the big fire.

A frozen fire whistle hampered Milford's company in calling out firemen.

The fire was kept from damaging the nearby Ben Franklin Store and the H. S. Saunders, Inc. jewelry store, although during the height of the fire jewelry was removed to the First National Bank. Also undamaged were a restaurant and the Coffman-Fisher department store.

One of three vacant stores adjoining the burned-out section was damaged by smoke and water. By late Friday afternoon Bata had arranged to lease one of these stores, three doors from its former quarters. New stock was scheduled to arrive Monday.

A heavy pall of smoke hung over the downtown district during the fire despite a strong west wind blowing in 28 degree temperature.

**Streets Slicked With Ice**  
Streets were soon slick with ice from the water being poured on the buildings and firemen (Continued on back page)

## House Looter Jailed Probation Is Denied

Jesse Clyde Draper, 55, was sentenced to a three-month jail term by Judge Andrew D. Christie in Superior Court at Dover Tuesday afternoon on a charge of breaking into the home of William Lofland at Harrington, on Feb. 1, 1959, and stealing a clock, radio, and some groceries.

Jack P. White, attorney for the men, pleaded for probation but the court, observing that Draper had already been on probation from the court, felt that probation was not in order despite some extenuating circumstances.

Draper was convicted by a jury some time ago after which Mr. White moved for a new trial which, however, was subsequently denied by the court. Draper was accused of entering the house, at which he was a frequent visitor, while the Loflands were away.

## Weasel Out Twice to Beat Stork at Felton, Wins Once

The "weasel," a tank-like vehicle owned by Thomas Murray, Dover, made two emergency maternity trips Saturday when ambulances were unable to reach homes in the Felton area because of drifts on rural roads.

The mothers are Mrs. Richard Coughlin and Mrs. Hugh Shepherd, both wives of men at the Dover Air Force Base.

An ambulance was unable to get through. By the time the weasel reached the Coughlin home, Mrs. Coughlin's first child,

## WHO PAID THE \$10?

The Receiver of Taxes of Kent County, in February, received a money order \$10 from Harrington, but the name of the sender was not on the order. The tax office requests the sender to bring his or her money order receipt to the office so that credit can be given.

## Century Club Fashion Show Rescheduled

Due to the poor condition of the roads resulting from the snow storm last weekend, the Harrington New Century Club spring fashion show scheduled for Tuesday evening, March 8, was postponed until Tuesday, March 15. The time is 7:30 and the place is the Harrington Field House. Rehearsal for the models will be held Monday evening.

Mrs. Charles Peck Jr. general chairman of the affair announced that the program will remain essentially the same as originally planned, with 40 models showing the clothes from Derrickson's and Virginia's Hat Shop in Milford, the Star Lite Shop of Harrington and Wollaston's Ladies Shop of Harrington and Seaford.

The ticket committee under the direction of Mrs. O. T. Roberts Sr. has placed the tickets in the hands of each member of the sponsoring organization The Harrington New Century Club, and may be purchased from any of them, or at the door on the 15th.

Plan now to attend the show. Door prizes will be awarded and an interesting program will be presented.

## Wesley College Choir to Appear At Asbury

The Wesley College Chorus and Chapel Choir under the direction of Miss Ona Weimer will sing at the 11 o'clock morning worship service at Asbury Methodist Church this Sunday morning.

The choir and chorus are widely known for their outstanding work in the field of sacred music. They are always on the waiting lists of churches and other organizations, and we are fortunate in having them in Harrington this Sunday.

The numbers which will be done are as follows: "Create in Me a Clean Heart, O God" and "Christ is Made the Sure Foundation" by the Chapel Choir and "Thou Art Worthy" and "Let Us Ever Walk With Jesus" done by the College Chorus.

As you know Wesley College is owned and operated by the Peninsula Conference of the Methodist Church. What goes on there is important for we have a share in being. Also we are particularly interested because two young people from our church, Joyce Downing and Alvin Jarrell, are in the Choir and Chorus. They are there preparing themselves for service to God and His Church. We urge you to call your friends and invite them to come with you to hear this outstanding group this Sunday morning at 11 o'clock.

## Boat Show To Be Held At Milford

A Delaware Boat Show will be held at Milford Army March 19-20.

The 200 cu. in., Hydro Bo-Bo Too, which holds a speed record of one mile of 106.049 miles per hour will be on exhibit. Also the Delaware Game and Fish Commission will have a wild life display. Many new boats and motors will be shown.

## 7 pound, 9 ounce boy had arrived at 5:30 a.m. She is a former nurse.

Mrs. Coughlin and the baby were put in the weasel on a mattress and taken to the Harrington ambulance at Harrington-Frederica Road and Route, 13, then to the Kent General Hospital at Dover.

Mrs. Shepherd was taken to the Dover Air Force Base Hospital. Kathi Ellen Shepherd, 6 pounds 9 ounces, was born there at 10:44 a.m., one hour after her mother got to the hospital.



Bill Humes' cars on Center Street, with spring just around the corner.

## Richard C. Bullock Announces His Candidacy For Sheriff

### Candidate For Sheriff



Richard C. Bullock

Richard C. Bullock, son of the late John H. Bullock Sheriff of Kent County from 1923-1925, has announced his candidacy for Democratic nomination for Sheriff. He is 49 years of age and is married to Genevieve Cooper. They have a daughter, 13. He was employed as manager of an A & P Store in New York City and in Dover, and for 25 years has been a merchant in the City of Harrington.

Mr. and Mrs. Bullock attended the Trinity Methodist Church in Harrington. He is a member of the Harrington Fire Company and has been for the last 25 years. They are both members of the Young Democratic Club and Mrs. Bullock is a member of the Kent County Women's Democratic Club. Mr. Bullock has been an active member of the Democratic party during his lifetime.

He has the support of many of the Kent County Democratic Committee members and hopes to receive the formal endorsement of the Ninth District Democratic Committee at its next meeting. Because of his educational background and business experience, he is well qualified to perform the duties of Sheriff, and his many friends are actively engaged in securing for him the nomination at the Kent County Democratic Primary Election, his supporters say.

## KERR SAYS U. S. PRESTIGE HURT IF NIXON VICTOR

Electing Nixon would mean "four more years of ducking and dodging issues," U. S. Senator Robert S. Kerr (D-Okla.), said Monday night to 500 Democrats attending a dinner in Caesar Rodney High School cafeteria sponsored by the Young Democrats of Kent County.

More than 600 tickets to the affair, called the "first major county meeting of this election year," had been sold. Considering the icy roads and snow storm Monday evening, the dinner sponsors were pleased at the turnout.

U. S. Senator J. Allen Frear, Jr., made the trip from Washington along with Senator Kerr and headed a long list of prominent Democrats at the affair. Senator Kerr lit into President Eisenhower for his frequent golf playing. He got the biggest laugh of the evening when he said that "America's next generation will be reminded of the dominant character of this era by the word 'Eisenhower' teed off here."

Kerr said that Eisenhower had created Nixon in his image. "Yes," Kerr said, "if Nixon lived up to Ike's image there would be four more years of loss of prestige abroad, impairment of confidence at home and a continued drift toward brinkmanship; four more years of lower farm income and liquidation of farm families; four more years of hard money, tight credit, and high interest rates; four more years of adverse trade balances with resultant reduction or total exhaustion of our gold reserves."

Senator Kerr, in urging Senator Frear's reelection this year, called the Delawarean "an able and faithful watchdog" in his determination to "maintain a favorable environment for your great chemical industry."

In a comment prior to the dinner the 63-year-old Oklahoma senator said he had supported and would continue to support Senator Frear's bill concerning "added and confiscatory taxes on securities." The senator also slammed the President for not signing water conservation and pollution control bills.

"We must not only elect members to Congress, but a President in the White House who will foster and develop an accelerated program of pollution abatement," the senator said.

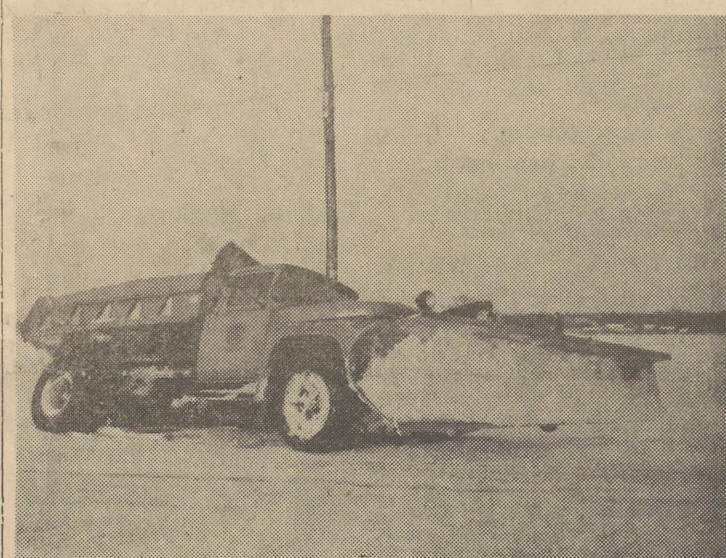
In his praise of Senator Frear, the speaker drew a laugh from both the Delaware senator and his wife when he said that Frear has "two things in common with New York and one with Dutch capital—will open in Quito, Ecuador." (Continued on Back Page)



Gail and Gwyn Melvin knee-deep in snow. All photos of snowstorm on page one and page eight by Curtis Melvin.



Charles Greenhaugh using snow-removal equipment on Delaware Avenue.



Snowplow in ditch on the Farmington-Harrington blacktop road.

Just a week after the fall of a six-inch snow, which began Wednesday night, March 2, a three-inch snow fell. Schools closed yesterday, as they did at Thursday and Friday of last week. In last week's snow, highways were blocked, motorists marooned in farmhouses, and state offices closed. The children, however, were delighted. The above photos describe the local scene last week.

## H.H.S. Ends Season, Temple Leads Kent and Sussex Scoring

Coach Dick Jeffer's Harrington High basketball Lions journeyed to New Castle Monday night and took the measure of St. Peter's High by a score of 70-49. The H.H.S. attack had its best balance of the season as Jim Temple led with 20 points followed by Ron Collison and Bruce Smith with 11 each.

David Hitchens, George Collins and George Balderson supplied the scoring punch as the Lion jayvee five won an easy victory in the preliminary contest.

HARRINGTON	G	F	P
Collison	9	1	19
Temple	8	4	20
Smith	7	5	19
Konesey	0	0	0
Lekites	3	2	8
Minner	0	0	0
Pieffer	2	0	4
Totals	29	12	70
ST. PETERS	G	F	P
W. Steele	5	0	10
Ryan	3	1	7
Reese	3	4	10
Gagnon	2	2	6
J. Steele	3	0	6
Ferris	0	0	0
Murphy	4	2	10
Totals	20	9	49

At Rehoboth on Tuesday night the Lions were out-classed for the first time this campaign as they bowed to Rehoboth's undefeated Seahawks 108-60.

The Sussex Countians closed out their season with a perfect record, the only team in Delaware to do so. They have a 30-2 record for the last two years.

Harrington made a fight of it for the first quarter, but inevitably were worn down by the winners' height advantage. None of the local players are taller

## FIRE COMPANY HAS RECEIVED ALL BIDS ON TRUCK

### 11 Senate Bills Aim At Cutdown Of Magistrates

A series of 11 bills aimed at revising the magistrate system in Delaware, cutting down the number of magistrates and putting them on a straight salary basis was introduced with bi-partisan sponsorship in the Senate Monday.

The bills bore the names of Senator John E. Reilly, Sr. (D-Wilmington), the majority leader and Senator Reynolds duPont (R-Greenville), the minority leader. The bills were reportedly drawn up by Associate Supreme Court Justice Daniel F. Wolcott, and backed by the Council on the Administration of Justice.

The bills (SB-347 through 357) would cut down the number of magistrates from 40 to 31, and establish annual salaries at \$10,000.

Each bill provides that it would not take effect until four years after being signed into law by the Governor.

Under the present system, there are 16 magistrate posts in New Castle County, including eight in Wilmington. The major bill (SB-348) would cut this to 12, only two of which would be in Wilmington, with the provision that the Wilmington magistrate courts be civil. There would be two each in Brandywine, New Castle, White Clay Creek, and St. Georges Hundreds, with two relief justices at large.

Kent County, which currently has eight justices, would be cut to seven, two in Dover, two in the north of the county, two in the south, and one relief justice.

Sussex County, which now has 16, would be cut to 12, two each in Milford (one of these would cover southeastern Kent), Georgetown, Rehoboth, Dagsboro, and Seaford, with two relief justices.

Senate Bill 349 would provide that all fines collected by magistrates be turned over to the State Treasurer, cutting out the magistrates' fee system.

Senate Bill 356 would provide that a motor vehicle offender arrested without a warrant in Wilmington should be arraigned in Municipal Court, while an offender arrested without a warrant outside the city should be taken to the nearest magistrate, with the exception of Wilmington magistrates.

Senate Bill 357, which provides for appointment by the Governor for a four-year term, provides that no more than a bare majority of the magistrates be of one political party, but makes no provision for Senate confirmation. The estimated cost to the state annually would be \$383,200.

Four other new bills went into the Senate Monday:

SB 346—Removing certain tax-relief privileges from the Dover City charter. Senator Price.

SB 345—Changing the law regarding the licensing of physical therapists who are licensed elsewhere, removing certain reciprocity provisions. Senator Reilly.

SB 355—Raising from \$125,000 to \$175,000 the amount the Levy Court may contribute annually to the New Castle County Free Library. Senators duPont and Reilly.

SB 358—Appropriating \$150 to the State examining Board of Physical Therapists for current expenses.

## HATFIELD BIDS FOR REELECTION TO BOARD OF EDUCATION



Luther P. Hatfield  
SEEKS RE-ELECTION

Luther P. Hatfield, president of the Board of Education of Harrington Special School District, announced this week he will be a candidate for re-election when his term expires in June. The election, to fill the single vacancy on the Board, will take place May 14. Term of office is for four years. The local board is working with the Felton and Frederica School boards on a proposed joint high school, with vocational facilities, to be located centrally in the area. The next regular meeting of the Board of Education will be on Tues., March 17, at 7:30 p. m., in the cafeteria. All board meetings are open to the public. Anyone interested, with questions on the educational planning for the district, is also invited to attend.

The New Truck Committee, of the Harrington Volunteer Fire Company, has received all its bids on a water-wagon type truck, and will meet in a few days to accept a bid, the group, of which Franklin Hendricks is chairman, told the fire company at its March meeting. President Albert C. Price presided.

The committee reported that no bid had been studied because some were late. However, that the accepted bid would be recommended to the fire company at its April meeting.

The new truck will carry 1000 gallons of water and will have a 300-gallon Hall centrifugal type pump.

Previous to the business meeting, the members attended a viewing at Boyer Funeral Home, of the remains of George W. Swain, a charter member and an active member until ill health incapacitated him a year ago. A spokesman for the fire company said: "His wise council aided the company in making many decisions and much of our progress through the years can be attributed to his judgement. His genial manner and witty remarks will be sadly missed at our meetings."

In other business, Chief Douglas Mills was authorized to buy boots to replace the old and damaged ones. He was also asked to get prices on outside radio speakers to be mounted on the two 500-gallon pumps and the water wagon.

President Price appointed the Parade Committee of 1960, with Paul Neeman as chairman; Curtis Melvin, Mills, and Clyde Tucker.

Ambulance Captain Paul Neeman announced that, beginning (Continued on back page)

## Community Choir To Give Palm Sunday Program

Three works of Johann Sebastian Bach will complete the Palm Sunday program of the Community Choir to be given at the Calvary Methodist Church in Milford. In addition to "The Seven Last Words of Christ", by Theodore DuBois, the choir has selected "Now Let Every Tongue Adore Thee" from Bach's cantata "Sleeper's Wake"; "Jesus, Priceless Treasure" from Bach's Motet of the same name and "Crucifixus" from Bach's "Mass in B Minor."

The latter work was performed at the Philadelphia Academy of Music last Sunday by the Robert Shaw Chorals, and, according to the Evening Bulletin, this work "is perhaps the supreme spiritual expression of our western civilization."

Representatives from Harrington, Greenwood, Lincoln, Lewes, Dover and Milford comprise the Community Choir. This choir performs a two-part service to the areas involved; it exposes the members to a major religious work and permits them to enjoy its development from raw discords to an interwoven four part harmony and it gives the audience an opportunity to become familiar with sacred works of outstanding emotional beauty.

## Minner To Observe 98th Birthday

Nimrod (Ced) Minner will observe his 98th birthday Wednesday and would like to receive cards. His wife is 89. The Minners do their own housework.



HIGH D.H.L.A. HERDS FOR JANUARY, 1960

During January, the following herds averaged a minimum of 35 pounds of milk or 1.2 pounds of butterfat per day:

Table with columns: Herd Owner, Address, Milk Avg. Per Cow, Fat Avg. Per Cow. Lists various herds and their owners across different counties like New Castle, Kent, and Sussex.

\* From December tests. Herd Summaries received from Cornell since publication of February issue.

LACTATIONS RECENTLY COMPLETED

The following D.H.L.A. lactations were reported by the computing service at Ithaca, N. Y., for the period ending February 1, 1960. In order to qualify for publication, the following levels of production were met:

Table with columns: Calving Age in Months, Actual Butterfat Production in 305 Days or Less. Lists calving ages and corresponding butterfat production levels.

It is hoped that this list will grow to include so many cows that it will be necessary to raise the qualification levels.

Table with columns: Herd Owner, Barn Name or Breed, Age in Mos. at Calving, Actual Milk 305 Days or Less, Fat. Lists various herds and their owners with production statistics.

Short Course For Bankers Rescheduled

An agricultural clinic for Delaware bankers, canceled because of last week's heavy snow storm, has been rescheduled for Thurs., March 17. The clinic is sponsored by the Delaware Bankers Association in co-operation with the School of Agriculture at the University of Delaware.

The theme of the short course is "The Impact of Changes Made at the National and Arm Level on Delaware's Agriculture." Topics and speakers are "The Impact of Farm Programs on Eastern Agriculture"—Dr. George E. Brandow, Pennsylvania State University; "Recent Trends in Delaware's Agriculture"—Dr. W. E. McDaniel, chairman of the department of agricultural economics, University of Delaware; "Adjustments at the Farm Level which Lower Costs and Increase Returns"—Dr. B. F. Stanton, Cornell University.

William R. Brown, president of the Delaware Bankers Association and cashier of the First National Bank of Wyoming, will preside at a pre-clinic luncheon. Dean George M. Worriow of the School of Agriculture will preside at the afternoon sessions. Mr. George Simpson of Houston, director of the Peoples Bank of Harrington and chairman of the Association's agricultural committee, will open the meeting at 1:30 p.m. in Agricultural Hall, University of Delaware, Newark.

Bankers to Honor 4-H Club Leaders

Dean George M. Worriow, School of Agriculture, University of Delaware, will be the guest speaker at the annual 4-H club leaders banquet March 17, 7 p.m. in the cafeteria of Caesar Rodney High School, Camden.

More than 100 4-H leaders are expected to attend, according to Dr. Samuel M. Gwinn, assistant director of the University of Delaware's Agricultural Extension Service.

The banquet is held to honor 4-H leaders for their outstanding service to more than 1600 Delaware boys and girls enrolled in 4-H club work.

All officers of the Delaware Bankers Association, which sponsors the event, and the members of the Association's agriculture committee have been invited to attend.

Mr. William R. Brown, First National Bank of Wyoming, is president of the association. Mr. George C. Simpson, director of the Peoples Bank of Harrington, is chairman of the agriculture committee.

Felton Scouts Hear Nelson

Felton Cub Scouts, Pack 141, held its Blue and Gold Banquet in Felton Church, Fri., Feb. 26. The invocation was given by the Rev. Johnson, pastor of Felton Methodist Church. A covered dish supper was enjoyed by all.

The speaker was Stanley Nelson, chairman of Leadership Committee for Kent County and a former Eagle Scout, who has a total of 21 active years in scouting.

The following Cub Scouts were presented awards: John McDowell, Bear badge; Cregg Elison, Lion badge; Mitchell Godwin, Lion badge and 3-year-pin; Larry Sipple, Wolf badge and assistant Denner stripe; Bruce Kimball, gold arrow and 2-year pin; Glenn Kimball, gold arrow and 1-year pin; Lee Kersey, gold arrow and 1-year pin; Thomas O'Day, Bobcat pin; Chris White, Wolf badge and gold arrow; Denis Conklin, Bear badge, gold arrow and silver arrow and assistant Denner stripe; Larry Vesco, Denner stripes; Roger Bradley, Wolf badge; Gene Palmer, Wolf badge; Howard Price, Wolf badge; Wright Salsbury, 3-year-pin; Wayne Salsbury, Bear badge and 2-year pin; Wayne Wheeler, Denner stripes; and Donald Wheeler, Denner stripes.

Mitchell Godwin was graduated from Cub Scouts by Cubmaster Charlie Sheets and received into Boy Scout Troop 141 by Scoutmaster Joe Gott.

Pine-wood derby kits were given to each Cub Scout at the end of the meeting.

Building Permits Kent County

William M. Chambers Jr., Viola house, \$12,000. Joseph H. Webb, Milford, concrete block addition to garage, \$6500.

Pasquale Dimondi, Wyoming, cement block plant, \$20,000. Herschel Billings, Milford, concrete block building, \$10,000. Peter Domonkos, Kenton Hundred, brick dwelling, \$5000. William Henry Rhodes, 77 Morris Dr., Dover, garage, \$1400.

Junior Broiler Program Is Announced

Delaware's 4-H Club members and high school vocational agriculture students are invited to enter the 1960 Junior Broiler Growing Contest by Ray Lloyd, University of Delaware extension poultry specialist.

The Delaware Poultry Improvement Association sponsors the annual program and provides cash prizes to the top 20 winners as well as certificates of merit to the first four winners.

First prize is \$25 and a trophy; second prize is \$20; third prize \$15; and fourth, \$10. For the 5-10 place winners a \$7.50 award is made and the 11-20 places each get \$5 prizes.

Lloyd explained the requirements for entries. They must be 10-19 years old as of Jan. 1 of this year.

He said he must have the entry blanks by March 21, so anyone wishing to enter should contact their county 4-H agent or their vocational agriculture instructor as soon as possible.

Each contestant is allowed one entry. This means 50 straight-run chicks. Lloyd said more chicks can be raised in the same flock if the contestant wishes.

All chicks will be wing-banded by the committee.

Contestants are encouraged to obtain their own chicks, keeping in mind that they should be meat type birds from a pullorum-typhoid clean source. They must be hatched on March 28-29.

Chicks will be donated by hatcheries and service clubs for contestants who cannot obtain chicks themselves.

Each contestant will select seven cockerels for dressing, judging and display at the close of the project. They will also be responsible for delivering the birds to the dressing and judging location.

The seven birds will become the property of the program committee and will be used to help defray the expenses of the contest.

The awards will be presented at a barbecue June 1 at the Kent-Sussex Fairgrounds.

Carson Seeks Chairmanship Of Kent Republican Group

John B. Carson, Dover, announced this week he would be a candidate for chairman of the Kent County Republican Committee at the April election.

He is a graduate of Dover High School, Wesley Junior College, and the University of Delaware.

The present Kent chairman is Deane Johnston, who has not announced if he is a candidate for re-election.

Burrsville

Union Worship service 10 o'clock. Sermon by the minister, the Rev. Donald Hurst. Sunday School 11 o'clock. Anstine Stafford, supt.

Prospect Sunday School 10 o'clock. Arthur Taylor, supt. Worship service 11 o'clock. Sermon by the minister, the Rev. Donald Hurst.

Wesley Sunday School 10 o'clock. Norman Outten, supt.

The evening service will be held at Prospect Church this Sunday evening at 7:30.

Sympathy is extended to the Willis family in the death of their mother, Mrs. Grace Willis, who passed away in Milford Memorial Hospital, Thursday of last week.

Our community was saddened again Friday of last week when Charlie Harvey, a lifetime resident of this village passed away in Johns Hopkins Hospital, Baltimore, Friday morning.

Little Frankie Bradley has been suffering with mumps this week but is getting along very nicely.

Mr. and Mrs. Clifford Baker called on her parents, Mr. and Mrs. John Singer, Denton, Sunday evening.

Mr. and Mrs. Leroy Stubbs and family called on Mr. and Mrs. Elmer Brown and family, Sunday afternoon.

Viola HDC Notes

The regular meeting of Viola Home Demonstration Club was held in the Viola Community Building Feb. 11. Hostesses for the day were Mrs. Nilda LaCrosse, and Mrs. Vivian Peterson.

Mrs. Lanah Milbourn gave a very interesting talk on "Choosing Lamps For Better See-Ability."

Our agent, Mrs. Smith, will be with us for our March meeting. Her topic will be "How's Your House Power." The March meeting will be held at the Viola Community Building March 31, at 1 o'clock. Hostesses will be Mrs. John Biggs, Mrs. William Chambers Jr., Mrs. W. H. Kersey and Mrs. Gardner Kersey.

Mrs. Charlie Sipple

Mrs. Lucy E. Sipple, 89, wife of the late Charlie Sipple, died Saturday at the Jarvis Nursing Home, Felton.

She is survived by three sons, Harry, Willis, and Clarence Sipple, all of Felton; two brothers, Charles Williams, Dover, and Arlie Williams, Smyrna; nine grandchildren and five great-grandchildren.

Services were held Wednesday at 1 p.m. from the Berry Funeral Home, Felton. The Rev. William Miller, Harrington, officiated. Interment was at Barratt's Chapel Cemetery, Frederica.

Shop and Swap—in the Want Ads

Delaware Food Market Report

The continued bad and stormy weather over most of the West and Northwest has definitely cut livestock receipts and meat production. This has been an important factor in pushing live cattle and hog prices at Midwest markets to their highest point in several months. Many retail cuts already reflect the higher livestock prices, and further temporary advances may occur in local retail meat prices. Basically, the meat supply situation remains about unchanged with a good supply of pork, beef and lamb remaining on farms, just waiting for good weather to come.

Looking ahead to the balmy days, it looks as if there will be plenty of tender and delicious broilers on local markets. The placement of chicks for broiler production has been running about 5% greater than a year ago, so expect larger marketings in March, April and part of May.

Fresh fish supplies are fairly good, with flounder, cod, porgies, butterfish and sea bass offering you your best buy this weekend. Lobster tails, shrimp and scallops are also plentiful and prices are not too high.

Some price advances are expected on many fresh vegetables because of weather conditions. However, there are still some good buys at the vegetable counters. This weekend check the following: carrots, beets, spinach, cabbage, onions, sweet potatoes and Eastern grown white potatoes.

There is a good variety of fruit available at most local markets. Bananas and pineapples continue to be in good supply, with prices very reasonable. Other fruits to check are hot house rhubarb, cranberries, oranges, grapefruit, lemons, Western pears and avocados. Honeydew melons, imported from Chili are fairly reasonable also. Some of the apples now available are from controlled atmosphere storage. These apples should taste almost like the fresh tree ripened ones because of the type of storage. Increasing supplies of these apples may be expected in the weeks ahead.

Both canned and frozen fruits are in good supply and offer an opportunity to save a few pennies here and there. Canned peaches are particularly plentiful, and pears are also in fair supply. Canned apple sauce, plums, cherries, pineapples and apricots are also in good supply.

BIRTHS

Milford Memorial Hospital Feb. 24 Mr. and Mrs. Francis Fletcher, Felton, boy Feb. 25 Mr. and Mrs. Eugene Currey, Lincoln, girl Feb. 26 Mr. and Mrs. George Willey, Milton, boy Mr. and Mrs. Clinton Turner, Milton, twin girls Mr. and Mrs. Herman Reed, Frederica, boy Feb. 27 Mr. and Mrs. Orin Crane, Dover, girl Mr. and Mrs. Travis Absher, Bridgeville, boy Feb. 28 Mr. and Mrs. James Spencer, Milton, boy

Mr. and Mrs. Martin Graham, Harrington, girl Mr. and Mrs. Wayne Gibson, Milford, girl Mr. and Mrs. Raymond Lingo, Millsboro, boy Feb. 29 Mr. and Mrs. Gilbert Mc-Broom Greenwood, boy Mr. and Mrs. Marvie Turlington, Selbyville, girl March 1 Mr. and Mrs. Jerome Peuse, Felton, girl Mr. and Mrs. George Bivins, Laurel, girl March 2 Mr. and Mrs. David Swartzentruber, Greenwood, boy Mr. and Mrs. Rufus Spencer, Greensboro, Md., girl

SHOP AND SWAP IN THE WANT ADS

MONTHLY INVESTMENT PLAN Hamilton Funds owns an interest in over 80 American corporations, selected for income and growth possibilities. Monthly or lump sum investment plans. Hamilton Funds Dept. 74400-16600 P.O. Box 5061, Denver 17, Colorado Please send free prospectus-booklet describing Hamilton Funds. Name: Address: City: State:

Sales - REAL ESTATE - Service ARNOLD B. GILSTAD HARRINGTON, Del. RANDALL H. KNOX, Sr. Sales Associate Telephones: Office EX 8-3551 Frederica—Phone DE 5-5696 Res. EX 8-8402

ERNEST RAUGHLEY INSURANCE AGENCY Complete Service For Your Insurance Needs Harrington, Del. Phone EX 8-3551

Migratory Labor Affected By Bill Introduced in House

Extension of state regulation in the field of migratory farm labor was proposed in the House of Representatives at Dover Monday with the introduction of a bill to require the registration of crew leaders.

The measure, HB-520, was prepared by the Governor's Committee on Migratory Labor.

The state earlier started to exercise some control in this field through the adoption, by the State Board of Health, of a health code which applies to the housing of migratory workers. The new step would give the state control over crew leaders in their relations with employers and with the migratory workers.

"Experience has shown that certain irresponsible crew leaders have exploited and abused the workers to whom they are responsible," the bill says in its introduction. The measure would require crew leaders to obtain certificate of registration from the State Employment Service, and would make it illegal to engage in the activities of crew leader without such a certificate.

More Power

The measure would empower the Employment Service to make regulations on information to be supplied by crew leaders on their method of operation, financial responsibility, transportation arrangements, wage arrangements, and working conditions to be afforded crew members. The service would also be empowered to hold hearings and suspend or revoke the certificate of any crew leader who is convicted of a felony, has given false statements in his application, has given false information to his crew members, or has failed to comply with the working arrangements with the employer of the crew members.

Employment of unregistered crew leaders would be prohibited. The bill was introduced by Rep. Charles C. King, the majority leader, with the co-sponsorship of Rep. William T. Best (R-Nassau), and Rep. William E. Graves (D-Georgetown).

It was one of three bills introduced Monday at a brief session at which the House passed two bills.

Another of the new bills is a proposal to regulate credit insurance. Another bill to accomplish the same purpose, SB-215, was passed by the Senate and amended in the House. A sponsor

said the new measure, HB-519, was proposed by Insurance Commissioner Harry S. Smith and the insurance industry.

The bill would regulate the form and amount of life, accident and health insurance issued in connection with loans or other credit transactions. The new bill would provide for regulation of such insurance in connection with loans of up to seven years' duration. The earlier measure, on the other hand, would prohibit the sale of such insurance in connection with loans of more than five years' duration.

The measure was introduced by Rep. Paul E. Shockley (D-Wilmington) with Rep. Charles R. Pryor (D-Clayton) co-sponsoring. The third bill introduced Monday HB-521, would permit the town of Bethany Beach to increase tax collection to \$21,000 a year. It was handed up by Rep. T. S. Johnson (R-Frankford) with Rep. Joseph B. Walls (D-Milton) and Mr. Graves co-sponsoring.

Bills Passed HB-505: To authorize transfer of appropriations from the Kent and Sussex Departments of Elections to their New Castle County counterparts, 28 yeas, seven absent. SB-343: To appropriate \$1000 to the coroner of Kent County to permit employment of a pathologist to perform autopsies, 31 yeas, four absent.

County 4-H Clubs Are Increasing

were called Corn and Canning Clubs, and the first one was the Houston Cardinals Club in Kent County. It was organized in 1914 with 12 members, according to Kent County 4-H Agent, Marion MacDonald.

However, the 60 members of today's Houston Cardinals Club can select from a list of 70 4-H projects. A long way from a choice of growing corn or canning vegetables.

Early in the 1920's, the clubs adopted the name of 4-H with each of the H's representing Head, Heart, Hands, and Health.

There are more than 16000 4-H club members in Delaware.

Carrying major responsibility for the work of the 70 local 4-H Clubs in Delaware are 200 adult leaders and junior leaders. In Kent County there are 305 members who carry 511 projects in 12 clubs. There are 38 adult and junior leaders in the county.

Shop and Swap—in the Want Ads

Berry Funeral Homes CAREFUL PLANNING Every service is carefully planned to meet the requirements of the family being served. MILFORD-HARRINGTON Phone: GA 2-8091 FELTON Phone AV 4-4548

New life for old photos parsons studio harrington, delaware 72 east boulevard telephone ext 8-3396 We'll restore your treasured old photos to their original beauty and clarity. The cost is modest. Ask us. Complete Line of Glamor Drapes For Engagements and Announcements Photographs, formal or candid anywhere, anytime.

A MESSAGE Sent by You On 2,000 Cards Would Cost \$60 For Postage Only PLUS Writing or Typing And Addressing A WANT AD WILL DO MORE For Only \$1

WASHAMATIC 1/2 HOUR COIN OPERATED LAUNDRY ALWAYS OPEN So Easy - So Quick 140° RAIN SOFT - HOT WATER WASH Large 9-Lb. Load 25¢ FLUFF DRY 10¢ - 10 Minutes SERVE YOURSELF and SAVE WHILE YOU SHOP 14 CLARK ST. HARRINGTON



**Births**

**Kent General Hospital**

BAYNARD—Mr. and Mrs. Robert Dover, March 3, daughter.  
 BESSINGTON—Mr. and Mrs. Martin, Smyrna, March 5, daughter.  
 BROWN—Mr. and Mrs. Nathaniel, Smyrna, Feb. 29, son.  
 CHRISTIANSON—Mr. and Mrs. William, Clayton, March 3, son.  
 COVINGTON—Mr. and Mrs. John, Frederica, March 5, daughter.  
 COX—Mr. and Mrs. James, Smyrna, March 4, son.  
 DEFOE—Mr. and Mrs. Gerald, Smyrna, Feb. 29, son.  
 DIAZ—Mr. and Mrs. George, Smyrna, Feb. 29, son.  
 EMORY—Mr. and Mrs. William, Dover, March 1, son.  
 HARRELL—Airman and Mrs. Leo, Woodside, March 2, daughter.  
 HARRIS—Mr. and Mrs. Richard, Dover, March 3, son.  
 HARRIS—Mr. and Mrs. James, Harrington, Feb. 29, son.  
 HENRY—Mr. and Mrs. Charles, Dover, March 6, son.  
 LEWIS—Mr. and Mrs. William, Smyrna, March 1, son.  
 McDONOUGH—Mr. and Mrs. Roland, Dover, March 6, son.  
 MERRITT—Mr. and Mrs. William, Dover, March 1, son.  
 NICHOLS—Mr. and Mrs. Clarence, Dover, March 6, son.  
 PLEASANTON—Mr. and Mrs. Thomas, Dover, March 4, son.  
 ROSE—Sgt. and Mrs. Frank E., Dover, March 1, daughter.  
 SHALLENBERGER—Mr. and Mrs. John, Clayton, March 1, daughter.  
 SHETH—Mr. and Mrs. Prabhaker, Dover, March 2, son.  
 TAYLOR—Mr. and Mrs. Walter, Dover, March 3, son.  
 THOMPSON—Mr. and Mrs. Eugene, Templeville, Md., March 4, son.  
 WAITE—Mr. and Mrs. James, Dover, March 6, daughter.  
 WILSON—Lt. and Mrs. John G., Dover, Feb. 28, daughter.  
 YEARWOOD—Mr. and Mrs. Clyde, Dover, March 5, son.

**Nanticoke Memorial Hospital**

BENNETT—Mr. and Mrs. Robert, Seaford, March 3, daughter.  
 CARMINE—Mr. and Mrs. Donald, Seaford, March 5, daughter.  
 COULBOURNE—Mr. and Mrs. Clarence, Seaford, Feb. 29, daughter.  
 DORMAN—Mr. and Mrs. Gerald, Dagsboro, March 5, son.  
 LITTLETON—Mr. and Mrs. Vernon, Laurel, March 3, son.  
 SMITH—Mr. and Mrs. Arnold, Georgetown, Feb. 29, daughter.  
 WILSON—Mr. and Mrs. Monroe, Bridgeville, Feb. 29, son.

**Dover Air Force Base Hospital**

ADKINS—Capt. and Mrs. Robert C., March 3, son.  
 ANNIS—Staff Sgt. and Mrs. Franklin H., Feb. 29, son.  
 BEAULIEU—Technical Sgt. and Mrs. Ernest A., March 2, daughter.  
 BLACKBURN—Capt. and Mrs. Glen E., March 5, son.  
 CLARK—1st Lt. and Mrs. Edward, aMrch 1, daughter.  
 DANIELS—Airman Second Class and Mrs. William R., March 2, daughter.  
 HEAL—1st. Lt. and Mrs. Earl H., March 6, son.  
 HORTON—Airman Second Class and Mrs. Nathaniel, Feb. 28, daughter.  
 HUBER—Airman Second Class and Mrs. Joseph B., March 4, daughter.  
 JONES—Airman Second Class and Mrs. Floyd C., March 2, daughter.  
 JOSEPH—Airman Second Class and Mrs. Richard, March 1, son.  
 LEAHY—Staff Sgt. and Mrs. David B., March 4, daughter.  
 MCKEE—Airman Third Class and Mrs. Gwin W., March 1, son.  
 MOORE—Technical Sgt. and Mrs. Donald E., Feb. 28, daughter.  
 MOORE—Airman Second Class and Mrs. William, Feb. 29, son.  
 MOORER—Airman First Class and Mrs. Leon, March 5, daughter.  
 PERRY—Staff Sgt. and Mrs. George M., Feb. 29, son.  
 PERRY—Technical Sgt. and Mrs. William W., Feb. 29, daughter.  
 RITCHEY—Master Sgt. and Mrs. William E., Feb. 28, son.  
 SALLEE—Airman First Class and Mrs. John L., March 2, son.  
 SHEPPARD—Staff Sgt. and Mrs. Hugh M., March 5, daughter.  
 SITTNER—Airman Second Class and Mrs. Donald A., March 5, son.  
 SORRELL—Airman First Class and Mrs. Roswell L., Feb. 29, daughter.  
 STAFFORD—Airman Third Class and Mrs. William F., March 5, daughter.  
 WEBSTER—Airman First Class and Mrs. Charles E., Feb. 29, daughter.  
 WILSON—Capt. and Mrs. Noel E., Jr., March 3, daughter.

**Good things happen when you give**



**Senator Frear Says Civil Rights Issue Disturbing to Many**

After week-long, round-the-clock sessions, the Senate has not approached a decision on Civil Rights legislation. Frankly, the situation is somewhat disturbing because as the debate continues many other major legislative items equally important to the welfare of this country are being increasingly delayed.

The strong opinions held by various spokesmen on both sides of this issue are understandable and can be appreciated. But the question remains as to how much the public interest stands to be in jeopardy unless this debate is soon resolved. Logically, the question of compromise is being raised both publicly and privately. Some members of the Senate, aware of the serious implications that are likely to arise if this debate continues much longer, are working hopefully to find a legislative formula that will have appeal to a majority of our membership.

Frankly, I do not think that the Senate will approve any legislation which is extreme in its provisions on either side of the issue. At least the mood of the Senate at week's end seemed to indicate such an attitude. It is for that reason that moderate members of the Senate, on each side of the aisle, are devoting their efforts to the development of a bill which can be looked upon as reasonable in its application.

No one who believes in the American system of Government, and this includes the overwhelming majority of the American people, will dispute the right of either the proponents or opponents of the so-called Civil Rights question to express themselves to the fullest. This right is basic under the rules of what has been called the last great deliberative body of the world—the Senate of the United States.

And so, although much has already been said during the six days and nights of almost uninterrupted discussion on this question, the debate will undoubtedly be further extended until a solution is reached. But I believe that men of good-will in Congress will find themselves able to join together in support of some legislative formula in the days just ahead that will permit an orderly conclusion to the situation that now prevails. The American people have been patient and understanding thus far as this debate has continued, and I think they will remain so as long as it appears that efforts are being made to enact legislation that is realistic and in conformity with the nation's welfare.

If I may add a personal note, the prospect of further sleepless

nights is not pleasant to contemplate by any of us that have now experienced this condition for a full week. And, I know that every member of the Senate would welcome an opportunity to enjoy at least one full night of sleep without interruption by summons to the Senate Floor. So let us hope and trust that the present week will find an end to the debate on this issue which will be in harmony with the needs and desires of all our citizens.

**'GENE KRUPA STORY' At Reese March 13-14-15**

More young folks visited Movie Center last week than any other week in the past four months. The young folks know the Happiness Trail and the older folks follow. If the quality of entertainment is to be judged by the offerings of the Reese Theatre listed in this week's program to be found in this newspaper, the earlier promise of a bonanza of giant hits is sure coming true. his trials and tribulations. In Circus, including all your favorites, Steve Brodie and Lyn Thomas appear in the new action laden 20th Century hit, "Here Come The Jets," with Curt Jurgens and Dawn Adams in "The House of Intrigue" in Cinemascope and Technirama. Viewing this combination show suggests an ideal all family treat.

It's in the air, both television and radio, Sal Mineo as Gene Krupa in "The Gene Krupa Story" with Susan Keener and James Darren, the sensational hit scheduled for showing at the Reese Theatre, Sunday, Monday and Tuesday, Mar. 13-14-15. It's the flame hot history of a famed jazz drummer, the flame along with his trials and tribulations. Include this in your 'must see' list of hits.

**Poultry Researcher Joins University**

Dr. William C. Krauss has joined the staff of the University of Delaware as a research associate, according to an announcement by Dr. Morris C. Cover, chairman of the department of animal and poultry science. Dr. Krauss will specialize in poultry disease research.

Dr. Krauss earned his doctor of veterinary medicine degree from Ohio State University in 1959. He also received his bachelor degree in animal science at Ohio State.

Before coming to the University of Delaware, Dr. Krauss engaged in a general practice in his native city, Wooster, O. He is a member of the American Veterinary Medical Association.

Dr. and Mrs. Krauss and their children, Eric Charles, two, and Judy Ann, one, live at 164 Academy Street, Newark.

**Frederica**

All of the services were cancelled last Sunday at Trinity Methodist Church due to the weather and local road conditions.

This area experienced one of the worst snow storms, seen locally for several years, last week. After comparatively pleasant weather for most of the winter season, it came as a great surprise last Thursday morning to see several inches of snow on the ground. Because of the extensive drifting due to the wind, many rural families were completely snowed in. Thanks to the State Highway Department's seemingly never-ending job of trying to clear the highways, most people were not confined for more than four days.

The March meeting of the W. S.C.S. of the Trinity Methodist Church, previously scheduled for March 4, will be held tonight at 8 p.m. at the home of Mrs. Emma Warner.

The Murderkill Lions Club dance, which was to have been held March 4, was held last night, the dancing accompanied by Lou Startt and his orchestra.

Mr. and Mrs. Joseph Schwartz and family of Milford were Sunday dinner guests of Mr. and Mrs. Oliver Boone.

Mr. and Mrs. Charles F. Morris and family have recently moved into their new home on Lober Street.

Mr. and Mrs. Arthur Marlow and their little daughter are being welcomed to our community, as they have moved into the house vacated by Mr. and Mrs. Charles F. Morris on Front Street.

**Veterans News QUESTIONS AND ANSWERS**

Q—My house burned down last year and I collected from the fire insurance company. I am a World War One veteran, eligible for VA pension under the new law, and I want to know if I have to figure the fire insurance payments as part of my income.

A—No. Proceeds of fire insurance policies need not be counted as income in applying for VA pension.

Q—VA, at my request, has been holding my GI insurance dividends, using them to pay my premiums in advance. I'd like to change that arrangement, and ask VA to hold my dividends on deposit with interest, subject to withdrawal on request. How do I go about it?

A—Write to the VA district

office which services your GI insurance policy. Give them your insurance number, and explain how you wish to change your dividend plan.

Q—I hear people talking about the "equalization clause" in the new pension system. Just what does this mean? I am the widow of a Korea veteran and will soon be eligible for pension under this new law.

A—The phrase "equalization clause" refers to the fact that eligibility requirements based on war service of a veterans become alike or equal for widows and children of World Wars I and II and the Korean conflict on or after July 1, 1960. It will no longer be necessary for you to establish that your husband had a service-connected disability at the time of his death, as it was formerly.

Q—I get two VA benefits: my monthly training allowance, and compensation for a service-connected disability. Do I have to report either on my 1959 Federal income tax report?

A—No. Veterans benefits are tax-free. Interest on GI insurance dividends left with VA on deposit, however, should be reported.

**Pilgrim Holiness Church Notes**

Sunday School 10 a.m.  
 First Sunday in a six weeks Sunday School Campaign leading up to Easter. Merits will be awarded as follows: 3 points for being present, 2 points for bringing your Bible, and 5 points for having a visitor or new scholar. Appropriate awards will be given at the close of the campaign to highest point scorers in each Sunday School Class and gifts will be given to every scholar who maintains perfect attendance during the contest.

Morning worship 11 a.m.  
 Special song by the Young People's Choir. Pastor will deliver the message, "Why I Believe in The Sunday School."

Pilgrim Youth Service 7 p.m.  
 Roger Ellers will have charge of the youth service this week.

Evening service 7:45 p.m.  
 A singspiration always opens the evening service followed by the message. The theme for the evening message will be "The Divine Compulsion." Psalms 126: 5, 6.

Mr. and Mrs. Wayne Maloney had their daughter, Melody Jill, christened at the morning serv-

ice Feb. 28.  
 Mrs. Melrose Salmons, Phillip Redden, and Edythe Melvin are hospitalized at this time.

A payment of \$1800 was made on the indebtedness of the church during the past quarter thereby reducing the debt to \$645.

The members and friends of the church wish to express their appreciation to Walter Messick of Taylor and Messick Farm Machinery for his generous help in moving the snow at the church last Saturday, thereby enabling us to park our cars next to the church.

While attendance was greatly reduced by the snow storm, 107 came for Sunday School and 87 remained for the morning worship service.

Among our visitors were Paty Jones and the Rev. and Mrs. James Mervine.

**Greenwood**

Sympathy of the community is extended to the family of Charles Breeding whose death occurred in an automobile accident. Because of road conditions, it was necessary to hold the funeral Sunday instead of Saturday.

Mrs. Theodore Payne reports on the W.C.T.U. bake and sale on Saturday. The ladies are all deeply grateful for the help and co-operation they received on such a snowy day. The proceeds amount to around \$15 with more donations yet to come in.

Mr. and Mrs. J. Burton Case, of Seaford, formerly of Harrington, were Sunday night supper guests of the Jacob Hatfields.

Mr. and Mrs. Allison Davis and Lawrence Meredith were Sunday callers at the Jacob Hatfields.

Jacob Hatfield is recuperating from the flu at home now, after being a patient in the Nanticoke Memorial Hospital for several days.

News is really scarce this week because of the blizzard. We were marooned here at Trail's End for several hours, but friends and neighbors got through to us finally, and we were glad it was no worse. Many of our secondary roads are not yet open and school buses were not able to pick up the children in some areas.

SHOP AND SWAP IN THE WANT ADS

**Banquet Tickets In Demand**

Erza Taft Benson, U. S. Secretary of Agriculture, is scheduled to speak at a special scholarship banquet at Caesar Rodney High School, Camden, March 31.

The Delaware State Grange and the Delaware Poultry Improvement Association have combined their annual scholarship banquets which usually are held separately.

Secretary Benson, a former county agricultural agent in Idaho, has held his post in the cabinet since 1953.

The banquet begins at 6:30. Tickets, \$2, are available from the following people:

New Castle County: D.P.I.A.—Herbert Hudson, Warwick, Md.; Paul Hunter Jr., 2817 Newport Gap Pike, Wilmington, Maurice Fox, Salem Church Road, Newark; Mrs. Curtis Hammond, R. D. No. 3, New Castle; Carlton Hughes, 37 Boxwood Avenue, Wilmington; Mrs. Ruth Bradley, Townsend, Leo Tammi, R.D. 2, Newark.

Grange—Mrs. Dan Harris, Newark; Mrs. Ruby Davis, Stanton; Mrs. Adeline Butler, Middletown; Mrs. Frank Cooper, Springers Lane, Limestone Acres, Wilmington; Mrs. Wills Passmore, 4200 Concord Pike, Wilmington; Belle Chambers, 100 Mkt. Street, Newport; Mrs. Melvin Brooks, Newark;

Kent County: D.P.I.A.—Charles L. Peck Jr., Harrington; E. F. Smith Jr., Kenton; Ed Laramore, Wyoming; August Haas, R.D. 3, Dover; George Simpson, Houston; Louis Bloom, Hartly; Charles Marker, Dover;

Grange—George Butler, Camden; Mrs. Irving Garton, Dover; Mrs. Grace Minner, Smyrna; Mrs. Mabel Cohee, Camden; C. Arthur Taylor, Harrington; Charles

Maske, Marydel; G. Wallace Caulk, Woodside; Sussex County: D.P.I.A.—Irving King, Milton; Ed Murray, Frankford; Roland Hastings, Laurel; Harold West, Seaford; George Metz, Lincoln; Earl Hawk, Bridgeville; J. Ed. McIlvaine, Millsboro.

Grange—Mrs. Harvey Warrington, Georgetown; Bess Shew, 6 E. Front St., Milford; Mrs. Chas. Powell, Lewes, Edna Murray, Millsboro; Marilyn B. Hopkins, Lewes; Mrs. Lulu Mills, Delmar; Mrs. Mildred O'Day, Seaford; Mrs. Thomas Elliott, Laurel.

**Magnolia**

Mrs. Margaret Farrow was discharged from the Dover Hospital Saturday. She is now spending some time at the home of Mr. and Mrs. Todd Davis, before returning to her own home.

Mr. and Mrs. Tom Wise and son are now making their home in Havre de Grace, Md., while Mr. Wise is stationed at Aberdeen. Mrs. Wise had previously been staying with her parents, Mr. and Mrs. Harry Frese.

Mr. and Mrs. Franklin Richards of Milford were the dinner guests Sunday of his parents, Mr. and Mrs. Ed Richards.

Dinner guests Sunday of Mr. and Mrs. Marshall Hart were Mr. and Mrs. Francis Simpson and family, Mr. and Mrs. John Lemmon and Gayle of Houston and Mr. and Mrs. Clyde Luton and Skipper.

**PTA News**

The PTA will hold its annual Family Night and Talent Contest Saturday, March 26, at 7 p.m. in the school cafeteria. Just fill in the entry blank published in this paper in order to enter the Talent Contest.

**Fleischauer Funeral Home Service Anywhere**

Greenwood, Delaware Phone FI 9-4568

See The Dinah Shore Chevy Show in color Sundays, NBC-TV—The Pat Boone Chevy Showroom weekly, ABC-TV.

**HOW MUCH IS A 10-YEAR EDGE IN A COMPACT CAR DESIGN WORTH?**

YOU DECIDE HOW MUCH MORE CORVAIR GIVES YOU IN COMFORT, CONVENIENCE AND CONTROLLABILITY... WITH THESE EXCLUSIVE FEATURES. THEY DON'T COST ONE PENNY EXTRA!



REAR ENGINE TRACTION—You climb right out of snow, sand and mud where other compact cars bog down.



AIR COOLING—You never have to buy antifreeze—or repair a radiator. And air can't boil over, ever.



PRACTICALLY FLAT FLOOR—Here's a bonus in extra foot room—more than you'll find in many big cars.



FOLD-DOWN REAR SEAT—One quick flip and you increase cargo space to 28.9 cubic feet. And it's standard equipment!

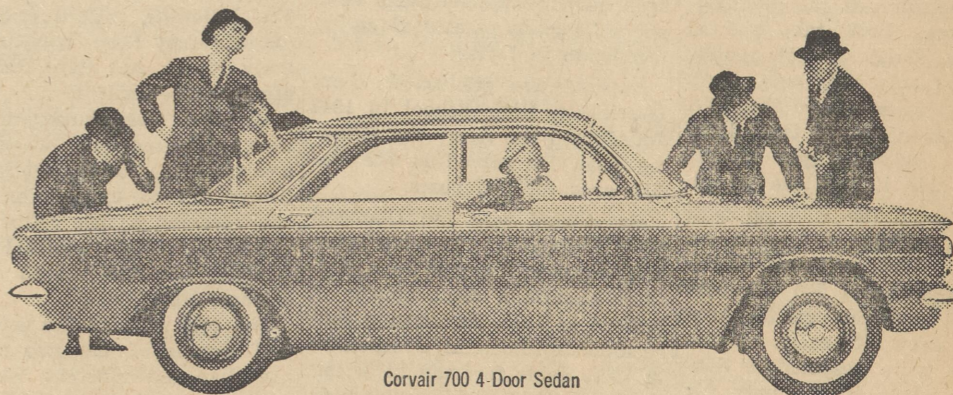


BALANCED BRAKING—The quicker the stop, the more equal is the weight distribution on each wheel. Another great advantage of rear-engine design.



FOUR-WHEEL INDEPENDENT SUSPENSION—Each wheel "walks" independently over bumps... and how that smooths the ride!

corvair BY CHEVROLET



Corvair 700 4-Door Sedan

Drive it—it's fun-tastic! See your local authorized Chevrolet dealer for fast delivery, favorable deals.

**HARRINGTON MOTOR CO.**

Phone EX 8-8343

HARRINGTON, DEL.

**Change the Scene with Wallpaper**

For a refreshing "change of scene" in any (or every) room in your home, choose from our wide, wonderful array of wallpapers. We've patterns and colors to enhance every decor.

**Taylor's Hardware**  
 Phone EX 8-3634  
 Harrington, Del.

SHIRTS ..... 18c — 5 or more  
 Men's Suits ..... \$1.10  
 Cleaned and Pressed  
 Ladies Dresses and Suits ..... \$1.10  
 Cleaned and Pressed

**Charlie Louie Laundry & Dry Cleaning Clark Street Harrington, Del.**

**Boyer Funeral Home ANYWHERE — ANYTIME**  
 Phone EX 8-8372 Harrington, Del.

**Simpson's Country Nursing Home Paradise Alley Road NOW OPEN**  
 Centrally Located Between HARRINGTON — FREDERICA — FELTON HOUSTON and MILFORD  
 For Information Contact MARY S. SIMPSON, R.N., Prop. at DE 5-5528 or EX 8-3216

**STONE'S HOTEL LARGE MODERN ROOMS**  
 EX 8-3238 EX 8-8908  
 COCKTAIL LOUNGE — Serving the FINEST MIXED DRINKS  
 DELICIOUS SANDWICHES, PIZZA PIES  
 Complete Line of Package Goods  
 Your Host BILL MASTEN  
 COLOR TV

BE WISE — ADVERTISE SHOP and SWAP In the WANT ADS



**THE HARRINGTON JOURNAL**

L. H. BURGESS AND W. C. BURGESS Publishers  
 C. H. BURGESS Editor  
 W. C. BURGESS Associate Editor  
 Out of State \$3.00 Per Year  
 Subscription Rates \$2.50 Per Year

Office of Publication, 207 Commerce Street, Harrington, Delaware  
 Entered as second-class matter August 16, 1946, at the Post Office at Harrington, Delaware, under the Act of March 3, 1879.

**MUCH ADO ABOUT NOTHING**

The McDonald chain will open a \$125,000 drive-in in Newark next week. It announces it will have no juke boxes. The chain started four years ago and has 120 units from Florida to California.

Harold P. (Bailey) Minner tells this one: A man said he had caught a 62-pound fish, on a 5-pound test line, off the wreck of the Mohawk. Another replied he had found a lantern, still lit, in the wreck. The first man retorted: "I'll take ten pounds off my fish if you will blow out that lantern."

Insurance Man Bill Outten tells this one: Two drunks were walking down a railroad track. One said: "These steps are killing me." The second replied: "It's not the steps that are bothering me: it's the low bannisters."

**THE SNOWSTORM**

The heavy snowstorm last week pointed to a fault of the welfare state. Few individuals offered to shovel snow at any price. This was in sharp contrast to the time when we were a boy.

Heavy snowfalls were welcomed then. Men and boys solicited the chores of cleaning the sidewalks. A boy could earn \$1.50 for a morning's work and that was money in the days when pie cost 5 cents a slice.

**Letter to the Editor**

The opinions expressed in this article are not necessarily the opinion of the entire membership of the PTA but is the way I feel as your PTA president from observations made over the past year and a half of PTA association.

An intelligent public is an informed public. I feel that many of the matters pertaining to the operation of Harrington and our school system are unknown to many of us as we do not take the time to find out what goes on in our community and in our school. I would like to point out that we have over 800 students attending school here in Harrington with only slightly over 60 members in the PTA. Some people say that the PTA doesn't do anything except have meetings and drink coffee. This is unfortunately close to the truth. The only way any organization can survive is from the active interest of its membership. I should like to point out a few things that concern me greatly as a member of this community.

At the regular meeting of the PTA last week I was approached by some people asking me what stand the PTA is taking on the possible school consolidation?

I replied that the PTA had not taken a stand except that all were in agreement that we need more classrooms. Some of the people seemed put out that I did not talk to great length on the subject, but I pointed out that many of the people don't have enough interest to even care what happens as long as it doesn't cost anything. To further prove a point, I told them how disappointed I had been at the attendance at the PTA meetings. Coach Jeffers put on a gym exhibition that evening using about 75 boys from the 4th to the 12th grades with parent attendance and teacher attendance of approximately 35 or 40.

How can an organization expect to serve a community and be part of a school program when I'm sure half of the young men in the exhibition had not one parent to see his accomplishments? It seems a darn shame to see those youngsters work so hard for such a small parent turn out as that.

There are probably 400 or 500 families that are the parents of our youngsters in the Harrington school. Let's take 400 as a figure. That is 800 people, counting moms and dads. Let's take a situation where the PTA was fortunate enough that either mom or dad belonged to the PTA to help it help the school.

What could the PTA do with such a backing? Here is an example. With a parent-teacher participation of 500 members we could have projects for fund raising, even if each of the members were responsible during the whole school year for raising only \$4.00 that would be \$2000. With that kind of money the PTA could really roll, it would be possible to give a \$500 scholarship in cash to 3 or 4 of our youngsters that would not otherwise have a chance to go to college and further their education. \$4 per member is not too much to ask parents to work for to help our school and our youngsters. Many

people spend that much for cigarettes in month's time let alone over a period of a year. With interested membership in the PTA you would know more about the problems the school has, after all the school is ours and the way it operates or fails to operate depends greatly on the parents and families that go to make up this community. When business men such as Bill Outten and Tom Peck feel that the PTA is worthwhile, I feel its good enough for me.

I read the letter to the editor in the Journal last week and here is an observation that I would like to make. It's a lot easier to let Joe do it or to be critical of a person, or persons, than it is to actively participate in community activities such as Chamber of Commerce, Fire Company, Lions Club, Legion, Parent Teachers or School Board. Maybe you don't agree with some of the things that are going on, and maybe you don't like the tactics of the school board or some other phase of the school system. You won't be able to change it by setting back watching TV and then getting really burned up when something doesn't go to suit you. Maybe you feel that you could do better on the school board than someone now serving, if you feel that way, just remember this, these people are honest citizens trying to do an honest job with whatever capacity they have to work with. When you start showing an interest as an individual and have worked with the problems of the community you may find yourself a prospective school board member, fire chief or whatever you may want to be. Just remember you don't go to one meeting of any organization, become nominated, elected and installed on the merits of that one visit, it takes an honest interest, active participation and the ability to further the cause of the organization. The ideal situation would be that everything would operate to suit everyone all the time, but that is a pretty good dream.

Harold Welch

**Hatfield Gets New Post With Telephone Co.**

Luther P. Hatfield, of 201 Simmons Street, Harrington, has been named Diamond State Telephone Company plant engineering technician in Dover.

Hatfield was graduated from Harrington High School in 1942 and joined the Army the following year. He served in the Pacific area for two years.

He started with the Diamond State Company as a cable splicer's helper in Dover in 1946. Hatfield became a cable splicer in Milford in 1948, supervising construction foreman in Georgetown in 1952, cable foreman in Wilmington in 1953, field engineer in Dover in 1954 and plant engineering technician at Georgetown in 1957.

He is past president of the Harrington Lions Club, and is now president of the Harrington School Board. Hatfield is married to the former Zita Zimmerly of Lancaster, Pa. They have one son, Marshall, 12 years.



"...AND PLEASE BLESS THE RED CROSS TOO FOR BEIN' SO GOOD TO ALL OF US!"

**Harrington School Notes**

**Mrs. Marvel—1st Grade**

Everyone is happy to be back at school after being snow-bound since last Thurs., March 3. Betty Ann and Charles Reed, Betty Jane Phillips and Steven Blessing are the only ones not present today, March 7.

There is an immense snow drift just outside our picture window, and some of us walked on top of it as we came in from the bus.

We will be busy this week getting our room ready for the Kent County Teacher's Meeting March 11, and preparing for our assembly March 15 at 9 a.m.

**Mrs. Howard—1st Grade**

We are happy to have Gene Cain back in school. He has been out sick for over two months.

We have a new classmate, Betty Lou Welch, from Church Hill, Md.

We will miss Ricky Anderson, who moved to Milford.

We are making things for our room for the Kent County Teacher's meeting for this Friday.

**First Grade—Mrs. Grant**

Today we had a letter from Billy Glavin. He is living in La Grange, Ill. We were happy to hear from him.

Brad Morris has a new lunch box. Today he stayed for lunch with us.

Ginny Jo Richardson is going to get a new dog.

We have a new boy, Gerald Morgan. He came to us from the Caesar Rodney School. We are happy to have him with us.

Everyone is busy making big pictures for our room. Beverly Callaway, Debbie Jean Willey, Lindsay Vanderwende, Gail Melvin, Gloria Welch, Wilbur Bradley, Richard Tipsword, and Gary Messick are working on a frieze for our room.

One of our groups has the basal reader "The New Round About."

**Mrs. O'Neal—Grade 3**

Patty Anderson has moved to Milford. We are sorry to see her go. We now have 12 boys and 15 girls.

We started to learn multiplication. We are making number cards to help us study.

**Mrs. Parker—Grade 3**

We have our assembly program Wednesday, March 9 at 9 a.m. Our play is called "Welcome to Spring." Pat and the Fairies is the name of our story we will act out. Everyone has a part. We have two square dances to do. Maybe the snow will leave us so our parents can come.

**Mrs. Brobst—5th Grade**

Our news last week should have said that Sally Pitlick was the newest aunt in our room. Jeanie Barlow has two nieces, and Faye Porter has a nephew.

We have enjoyed playing in the snow.

Our six weeks exams are over and we are looking forward to getting our report cards next week. There were three girls who did not miss a word in spelling exams for the past six weeks. They are: Judy Burgess, Peggy Holden, and Bonnie Matthews. The following missed only one word: Jimmy Rash, Barlynn Cox, Sally Pitlick and Faye Porter.

**Mrs. Mann—Grade 6**

We have been having a good time in the snow this week. Too, a number of us have been making things out of aymp. Our class has received a nice letter from one of our recent pupils, Pamela Glavin, who has moved to La Grange, Ill.

She told us how the activities and lessons of the two schools are alike and different. We miss her very much but we wish her much happiness in her new home.

We have been having tests for the closing of the six week's period.

Reporters—Doris Spicer Marshall Hatfield

**Mr. Donovan—Grade 5**

Last Tuesday Joe Morgan came to Harrington School. Joe is from Caesar Rodney School. He has

eight in his family. He has four brothers and one sister. He likes school very much. We hope he like our school.

Yesterday our class went down to Miss Malek's art room to draw pictures for our bulletin board. We drew pictures from our social book. We either drew with pencil or charcoal.

Reporters, Patty Jopp, Cathy Masten, Ed Wheatley.

**SENIOR PERSONALITY**

Alice Marie Wright  
 Alice Marie Wright, daughter of Mr. and Mrs. Elwood R. Wright, was born Jan. 31, 1942 in Vernon.

Alice started school in Denton, Md., but moved back to Delaware in the fourth grade.

She has been in Glee Club for two years, band, student librarian, secretary of nurses club and is Miss Phetzing's secretary. Water skiing, bowling, and reading rate tops with Alice.

She plans to attend Goldey Beacom.

**Sophomores Plan Dance**

The Sophomores are planning a dance to be held at the school Friday evening, March 18. Come out and help make this event a success while you enjoy the evening.

**Magazine Campaign**

The recent magazine campaign sponsored by the three bands of our school was completed before the snow storm of last week, and the goal was reached and passed. The profits will go toward the purchase of new drums for the marching band. We want to thank all persons who co-operated, the students everywhere who subscribed to new magazines and renewed the ones they were already receiving. All this helped us to achieve the goal and make the campaign a success. We thank everyone.

Winners are as follows: Bobby Winkler, Bonnie Satterfield, Arthur Taylor, Donald Melvin, Linda Layton, Jackie Abbott, Joan Smith, Barry Fry, and Billy Jester. They will receive their prizes at an assembly in the near future.

Honorable mention must go to the others who won for themselves certificates of merit in salesmanship: Billy Dill, Wayne Melvin, David Brobst, Clara Welch, Lois Larimore, Jimmy Rash, James McDonald, Nancy Callaway, and Doug Mills.

The Curtis Circulation Company was the soliciting organization and their representative is Arthur Wallis Jr., of Dover. Of the three bands, the Junior High School Band brought in the most sales, and as an extra award, each member who sold, regardless of the amount, has received a free ticket to the Reese Theatre. This award is given only if the goal is received and the group passes their allotment, and was made possible through the co-operation of Reese Harrington, theatre manager.

**Perfect Attendance**

**Grade 1—Mrs. Grant**  
 Wilbur Bradley, Mickey Chaffinch, Bobby Everline, Jimmie Russell, Richard Tipsword, Beverly Callaway.

**Grade 1—Mrs. Howard**  
 David Brown, David Dill, Rusty Lewis, Robert Messick, Marshall Morgan, James Morris, Donald Moore, David Newnom, Lillian Brown, Gloria Dean, Linda Kates, Joanne Lane, Rose Mary Larimore, Alice Vanderwende, Norma J. Wyatt.

**Grade 1—Mrs. Marvel**  
 Wayne Anthony, Jr., Richard Carter, James Fitzhugh, John Forbes, John Gray, James Larimore, Robert Legates, Ronnie Letterman, Chris Nielsen, William Walls, Dennis Layton, Diane Carroll, Cynthia Lane.

**Grade 2—Mrs. West**  
 Lester Cleaves, Robert Eilers, Roger Hicks, David Krouse, Gene Price, Robert Rash, Wayne Rust, Ricky Welch, Guy Winebrenner, Mike Wilcutts, Margie Denman, Gina Wechtenhiser, Diane Smith, Paula Simpson, Bobbie Creadick.

**Grade 2—Mrs. Jerred**  
 Charles Brown, Robert Dill, Michael Derrickson, Louis Kemp,



Miss Shirley Ann Hurd

Mr. and Mrs. Charles H. Roland Jr. of Viola, announce the engagement of her daughter, Miss Shirley Ann Hurd to Mr. W. Dorsey Hammond, son of Mr. and Mrs. William D. Hammond of Felton. Miss Hurd, a graduate of Felton High School, is a Junior at Washington College, Chestertown, Md. A political science major, he is a member of the Delta Upsilon National Fraternity. A June wedding is planned.

**Grade 5—Mrs. Brobst**

Earl Coates, Richard Jester, Wayne Melvin, Michael Stayton, Jeanie Barlow, Judy Burgess, Barbara Cox, Josephine Cubbage, Sandra Ferrelli, Bonnie Matthews, Brenda Neeman, Sally Pitlick, Faye Porter, Nancy Richardson.

**Grade 5—Miss Long**

Daniel Hicks, Wayne Horner, Leon Kukulka, Albert Larimore, Gail McReynolds, Dennis Spicer, Norman Truitt, Michael Welch, Pamela Cress, Susan Fair, Brenda Hurd, Brenda Ivins, Carolyn Miller, Peggy O'Neal, Dorothy Schrieber, Nancy Taylor, Susan Taylor.

**Grade 5—Mr. Donovan**

Calvin Bonniwell, Donny Fry, Harry Moore, Larry Morris, Harold Mullins, Raymond Poore, Joe Steward, Raymond Szmajda, Wayne Teed, Edward Wheatley, Bernice Boone, Donna Calloway, Kathy Fallon, Patty Jopp, Edna Mae Layton, Cathy Masten, Donna Schreck.

**Grade 6—Mrs. Purse**

James Cain, Lee Dean, William Dill, David Greenly, William Harcum, Lester Minner, James Rouse, Paul Smith, Kenneth Eilers, Emilene Adams, Connie Correll, Kathy Hopkins, Jerl Jarrell, Sandra Kohland, Gayle McDaniell, Carolyn Porter, Lois Redden.

**Grade 6—Mrs. Mann**

Kenneth Correll, Donald Draper, Ernest Gallo, Jerry Garey, John Greenhaugh, Marshall Hatfield, Allen Jerred, Billy Knox, Donald Wells, Mary Brown, Kitty Lou Burgess, Vicki Hill, Jo Anne Moore, Doris Spicer, Georgia Lee Vincent.

SEE THE NEWEST IN  
**BOATS & MOTORS**  
 at the  
**DELAWARE**  
**BOAT SHOW**  
**MARCH 19 & 20**  
**MILFORD ARMORY**  
 Sponsored by MILFORD KIWANIS CLUB

**You're Really in Clover**

**When You Plant Southern States CLOVER SEED**

- Adapted • Selected parentage
- Known origin • Disease-resistant
- High purity and germination
- Low weed content

Use the Best — Plant Southern States Clover Seed

Cert. Ladino Clover	90¢ lb.
Cert. Chesapeake Red Clover	\$33.00 bu.
Home-Grown Red Clover	\$27.50 bu.
Alsike Clover	\$20.50 bu.

**Peck Bros. Farm Supply Co.**  
 Phone EX 8-3654  
 Harrington, Del.  
 YOUR SOUTHERN STATES COOPERATIVE SERVICE AGENCY

**Grade 8—Miss Morris**

Wayne Carson, Randall Knox, Jr., Douglas Moore, Clyde Mullins, Walter Perdue, Richard Schrieber, Nancy Blades, Phoebe Bullock, Sharon Goodhand, Gene Graham, Alice Hearn, Marilyn Jarrell, June Thompson.

**Grade 8—Mrs. Dolby**

Barry Fry, Donald Melvin, Milton Szmajda, Janet Anthony, Dawn Hopkins, Norma Teed, Carol A. Willis, Nancy Hicks.

**Grade 9—Mr. Curtis**

Roger Brown, George Collins, Joe Cressy, Robert Gillette, David Harcum, Niel Sherwood, Priscilla Nielson, Marilyn Minner, Lynda Layton, Barbara Jones, Betty Dobraski, Frances Cain.

**Grade 9—Mr. Cotter**

Lynn Hopkins, Karl Skinner, William Sollars, Paul Wagner, Clarence Hackett, Patsy Bradley, Cheryl Clark, Evelyn Hopkins, Kay McDaniel, Carol Ann McNally, Claudia Neeman, Janice Ralph, Mary Rinaldi, Joyce Webb.

**Grade 10—Mr. McDonald**

Thomas Brown, George Collins, William Lyons, Allen Wix, Roger Wix, Louise Hicks, Jean McGarrland.

**Grade 10—Mrs. Pollitt**

Pat Crisson, Rebecca Moore, Jane Phillips, Charlotte Rapp, Sandra Tatman, Margaret Teed, Judy Yates.

**Grade 11—Mr. Rutledge**

Harry Knotts, Anna Mae Baker, Kathy Holloway, Mary Ann Messick, Iris Lee Warrington, Beverly Larimore, Joann Cornish.

**Grade 12—Mr. Kramedas**

Alice Wright, Vivian Webb, Geraldine Reed, Patsy Jack, Betty Lee Hendricks, Thelma Collins.

**Grade 12—Miss Dickrager**

Bruce Smith, Jane Hughes, Marion Liska, Ruth Walls, Joan Welch.

**March 29th Date Chosen For Dover Century Club Chorus Concert**

Mrs. Ernest C. Calhoun, Jr., of Rodney Village in Dover, president of the Dover Century Club Chorus, announces that the chorus is planning its annual Spring Concert earlier this year, the date being Tues., March 29. It will be held in Grace Fellowship Hall of Wesley Church in

Dover at 8:15 p. m. The director will be Mrs. William J. Storey. Mrs. Norman M. Cupfender, well-known pianist of Dover, will be the accompanist. This chorus of 25 young women have earned a wide reputation for their finesse of performance for many civic and church groups of this area, as well as their annual Spring Concert. They are experienced in the fields of radio and TV in addition to their stage performances. Their most recent program was given on the occasion of the annual YMCA banquet on Jan. 25. Letters have been mailed former subscribers to this concert. Anyone desiring further information or additional subscription cards for the concert may secure them by writing Mrs. Thomas H. Peterson, 39 Sexton Road, Kent Acres in Dover or call her at REdfield 6-1557. Subscriptions received prior to March 18 will be recognized on the printed program.

Committees working on this concert are: Telephone, Mrs. Neil L. Graf, Mrs. Alvin Moore, Mrs. Richard R. Velslage, and Mrs. Selwyn Williams; posters; Mrs. George H. Hughes, Jr.; advertising, Mrs. Fred A. Wooten. The following members have aided in publicity promotion: Mrs. Ernest C. Calhoun Jr., Mrs. Earl R. Fields, Mrs. Alf Anderson, Mrs. Edwin F. Englehart, Mrs. Gerald H. Ray, Mrs. John T. Schmick, Mrs. William H. Draper, Jr., Mrs. George A. Speed, Mrs. Richard Thurston, Mrs. Richard W. Comegys, Mrs. Neil L. Graf, and Mrs. Alvin Moore.

A special feature of the program will be the presentation of selections from "Hans Christian Anderson." Samuel Goldwyn production, using children of the members of the chorus.

The guest artist for the concert will be James Martindale, bass, of New York City, who will be accompanied by Howard Silberer, also of New York City.

**BE WISE — ADVERTISE**  
**Shop and Swap**  
**in the Want Ads**

**SHOP AND SAVE**  
 At  
**QUILLEN'S Clover Farm Store**  
 Highest Quality at Lowest Prices  
**Beginning Monday, March 14**  
 For the Convenience of the Public Our Store  
 Will Be Open Monday thru Thursday  
 7 a. m. to 8 p. m.  
 Friday and Saturday  
 7 a. m. to 9 p. m.

**Southern States Starting & Growing Mash**

The feed that gives your chicks

**The 7 Extras**

- 9% EXTRA PROTEIN
- 12% EXTRA MANGANESE
- 43% EXTRA PHOSPHORUS
- 47% EXTRA CALCIUM
- 62% EXTRA RIBOFLAVIN
- 152% EXTRA VITAMIN "D"
- 200% EXTRA VITAMIN "A"

Also plenty of Vitamin B12, Niacin and Choline... plus antibiotics, proteins and minerals. Energized, Synchro-Balanced and Thorr-Mixed too. Yes, Starting & Growing is the "complete" feed with everything needed to produce vigorous chicks that grow fast and develop into excellent pullets. Order a supply today.



CLASSIFIED ADVERTISING

SELLS and SELLS - To place your order, call Harrington EX8-3206, ask for "CLASSIFIED" or use this handy order form

CLASSIFIED RATES:

- Minimum: 25 words or less - 75c
3 cents per word additional
For Box Numbers in ads add 25c
Classified Display - \$1.00 per column inch
Appliances, Furniture, Cars, Boats, Real Estate: Rent, Buy or Hire

RATE SCHEDULE

All ads in this column must be paid for in advance. This is the only way in which orders will be accepted for want ads. No ad order accepted for less than 75 cents. If you have an ad which you want inserted, count the words (name and address included), and multiply by the number of times you want the ad to run. Send that amount with the advertisement.

FOR SALE

WALLPAPER

Largest Selection on the Eastern Shore

Milford Wallpaper & Paint Co.

Phone Milford GA2-8317

For sale - Scratch pads, 4x6 inches, at bargain prices - The Journal.

For sale - 2-piece living room suite, nylon upholstery, foam cushions, \$139. - Paul Callaway, Furniture, Appliances, Home Improvements, 2001 North Washington, Phone EXeter 8-3858.

For sale - Floor covering, Armstrong and Gold Seal in 6, 8 and 12 foot widths. Argo Linoleum Co., Milford, Del., phone GA2-8431.

MOBILE HOMES New and Used Schuit-Kooy-Hart-Atlas-Alma See the NEW LOOK in "Luxury Coaches" 1960 Models now showing. Camden Mobile Homes Sales, RE 4-5833 - Eve. 4-2144 Camden, Del. tf 9-25

USED FURNITURE Automatic Washers, Refrigerators, Air Size Elec. Stove, New; Dryer, Gas Stoves, Living Room Suite, Bedroom Suite, Kitchenettes, Bar, Gains. CAMDEN MOBILE HOMES SALE Camden, Del. tf 9-25

Don't buy a boat until you see Taylor Marine Johnson Motors and Accessories, Rehoboth Out of Milford GA 2-9177. tf 1-29

For sale - 3 bedroom bungalow with 3 1/2 acres land. One mile west of Andrewsville. Phone EX 8-8350. tf 2-19

Free - \$10.00 Singser Rotating Power brush with every Singser Golden Gold vacuum cleaner, sold this week only. Singser Sewing Center, Milford, Del. 1th, exp. 3-11

PLYWOOD

DPPA GRADE STAMPED NEW LOW PRICES

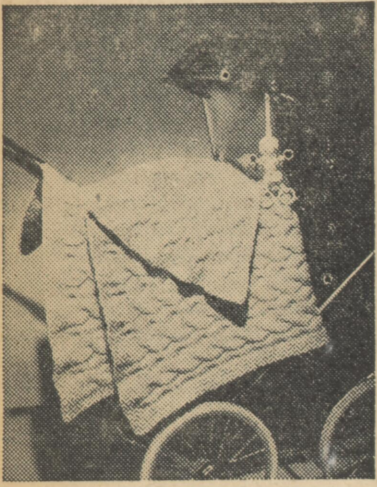
4 x 8 (sanded) Exterior Sheathing 1 1/2" \$11 \$13 1 1/4" \$12 \$14 1 1/2" \$13 \$15 1 3/4" \$14 \$16 2" \$15 \$17 2 1/2" \$16 \$18 3" \$17 \$19 3 1/2" \$18 \$20 4" \$19 \$21 4 1/2" \$20 \$22 5" \$21 \$23 5 1/2" \$22 \$24 6" \$23 \$25 6 1/2" \$24 \$26 7" \$25 \$27 7 1/2" \$26 \$28 8" \$27 \$29 8 1/2" \$28 \$30 9" \$29 \$31 9 1/2" \$30 \$32 10" \$31 \$33 10 1/2" \$32 \$34 11" \$33 \$35 11 1/2" \$34 \$36 12" \$35 \$37 12 1/2" \$36 \$38 13" \$37 \$39 13 1/2" \$38 \$40 14" \$39 \$41 14 1/2" \$40 \$42 15" \$41 \$43 15 1/2" \$42 \$44 16" \$43 \$45 16 1/2" \$44 \$46 17" \$45 \$47 17 1/2" \$46 \$48 18" \$47 \$49 18 1/2" \$48 \$50 19" \$49 \$51 19 1/2" \$50 \$52 20" \$51 \$53 20 1/2" \$52 \$54 21" \$53 \$55 21 1/2" \$54 \$56 22" \$55 \$57 22 1/2" \$56 \$58 23" \$57 \$59 23 1/2" \$58 \$60 24" \$59 \$61 24 1/2" \$60 \$62 25" \$61 \$63 25 1/2" \$62 \$64 26" \$63 \$65 26 1/2" \$64 \$66 27" \$65 \$67 27 1/2" \$66 \$68 28" \$67 \$69 28 1/2" \$68 \$70 29" \$69 \$71 29 1/2" \$70 \$72 30" \$71 \$73 30 1/2" \$72 \$74 31" \$73 \$75 31 1/2" \$74 \$76 32" \$75 \$77 32 1/2" \$76 \$78 33" \$77 \$79 33 1/2" \$78 \$80 34" \$79 \$81 34 1/2" \$80 \$82 35" \$81 \$83 35 1/2" \$82 \$84 36" \$83 \$85 36 1/2" \$84 \$86 37" \$85 \$87 37 1/2" \$86 \$88 38" \$87 \$89 38 1/2" \$88 \$90 39" \$89 \$91 39 1/2" \$90 \$92 40" \$91 \$93 40 1/2" \$92 \$94 41" \$93 \$95 41 1/2" \$94 \$96 42" \$95 \$97 42 1/2" \$96 \$98 43" \$97 \$99 43 1/2" \$98 \$100 44" \$99 \$101 44 1/2" \$100 \$102 45" \$101 \$103 45 1/2" \$102 \$104 46" \$103 \$105 46 1/2" \$104 \$106 47" \$105 \$107 47 1/2" \$106 \$108 48" \$107 \$109 48 1/2" \$108 \$110 49" \$109 \$111 49 1/2" \$110 \$112 50" \$111 \$113 50 1/2" \$112 \$114 51" \$113 \$115 51 1/2" \$114 \$116 52" \$115 \$117 52 1/2" \$116 \$118 53" \$117 \$119 53 1/2" \$118 \$120 54" \$119 \$121 54 1/2" \$120 \$122 55" \$121 \$123 55 1/2" \$122 \$124 56" \$123 \$125 56 1/2" \$124 \$126 57" \$125 \$127 57 1/2" \$126 \$128 58" \$127 \$129 58 1/2" \$128 \$130 59" \$129 \$131 59 1/2" \$130 \$132 60" \$131 \$133 60 1/2" \$132 \$134 61" \$133 \$135 61 1/2" \$134 \$136 62" \$135 \$137 62 1/2" \$136 \$138 63" \$137 \$139 63 1/2" \$138 \$140 64" \$139 \$141 64 1/2" \$140 \$142 65" \$141 \$143 65 1/2" \$142 \$144 66" \$143 \$145 66 1/2" \$144 \$146 67" \$145 \$147 67 1/2" \$146 \$148 68" \$147 \$149 68 1/2" \$148 \$150 69" \$149 \$151 69 1/2" \$150 \$152 70" \$151 \$153 70 1/2" \$152 \$154 71" \$153 \$155 71 1/2" \$154 \$156 72" \$155 \$157 72 1/2" \$156 \$158 73" \$157 \$159 73 1/2" \$158 \$160 74" \$159 \$161 74 1/2" \$160 \$162 75" \$161 \$163 75 1/2" \$162 \$164 76" \$163 \$165 76 1/2" \$164 \$166 77" \$165 \$167 77 1/2" \$166 \$168 78" \$167 \$169 78 1/2" \$168 \$170 79" \$169 \$171 79 1/2" \$170 \$172 80" \$171 \$173 80 1/2" \$172 \$174 81" \$173 \$175 81 1/2" \$174 \$176 82" \$175 \$177 82 1/2" \$176 \$178 83" \$177 \$179 83 1/2" \$178 \$180 84" \$179 \$181 84 1/2" \$180 \$182 85" \$181 \$183 85 1/2" \$182 \$184 86" \$183 \$185 86 1/2" \$184 \$186 87" \$185 \$187 87 1/2" \$186 \$188 88" \$187 \$189 88 1/2" \$188 \$190 89" \$189 \$191 89 1/2" \$190 \$192 90" \$191 \$193 90 1/2" \$192 \$194 91" \$193 \$195 91 1/2" \$194 \$196 92" \$195 \$197 92 1/2" \$196 \$198 93" \$197 \$199 93 1/2" \$198 \$200 94" \$199 \$201 94 1/2" \$200 \$202 95" \$201 \$203 95 1/2" \$202 \$204 96" \$203 \$205 96 1/2" \$204 \$206 97" \$205 \$207 97 1/2" \$206 \$208 98" \$207 \$209 98 1/2" \$208 \$210 99" \$209 \$211 99 1/2" \$210 \$212 100" \$211 \$213 100 1/2" \$212 \$214 101" \$213 \$215 101 1/2" \$214 \$216 102" \$215 \$217 102 1/2" \$216 \$218 103" \$217 \$219 103 1/2" \$218 \$220 104" \$219 \$221 104 1/2" \$220 \$222 105" \$221 \$223 105 1/2" \$222 \$224 106" \$223 \$225 106 1/2" \$224 \$226 107" \$225 \$227 107 1/2" \$226 \$228 108" \$227 \$229 108 1/2" \$228 \$230 109" \$229 \$231 109 1/2" \$230 \$232 110" \$231 \$233 110 1/2" \$232 \$234 111" \$233 \$235 111 1/2" \$234 \$236 112" \$235 \$237 112 1/2" \$236 \$238 113" \$237 \$239 113 1/2" \$238 \$240 114" \$239 \$241 114 1/2" \$240 \$242 115" \$241 \$243 115 1/2" \$242 \$244 116" \$243 \$245 116 1/2" \$244 \$246 117" \$245 \$247 117 1/2" \$246 \$248 118" \$247 \$249 118 1/2" \$248 \$250 119" \$249 \$251 119 1/2" \$250 \$252 120" \$251 \$253 120 1/2" \$252 \$254 121" \$253 \$255 121 1/2" \$254 \$256 122" \$255 \$257 122 1/2" \$256 \$258 123" \$257 \$259 123 1/2" \$258 \$260 124" \$259 \$261 124 1/2" \$260 \$262 125" \$261 \$263 125 1/2" \$262 \$264 126" \$263 \$265 126 1/2" \$264 \$266 127" \$265 \$267 127 1/2" \$266 \$268 128" \$267 \$269 128 1/2" \$268 \$270 129" \$269 \$271 129 1/2" \$270 \$272 130" \$271 \$273 130 1/2" \$272 \$274 131" \$273 \$275 131 1/2" \$274 \$276 132" \$275 \$277 132 1/2" \$276 \$278 133" \$277 \$279 133 1/2" \$278 \$280 134" \$279 \$281 134 1/2" \$280 \$282 135" \$281 \$283 135 1/2" \$282 \$284 136" \$283 \$285 136 1/2" \$284 \$286 137" \$285 \$287 137 1/2" \$286 \$288 138" \$287 \$289 138 1/2" \$288 \$290 139" \$289 \$291 139 1/2" \$290 \$292 140" \$291 \$293 140 1/2" \$292 \$294 141" \$293 \$295 141 1/2" \$294 \$296 142" \$295 \$297 142 1/2" \$296 \$298 143" \$297 \$299 143 1/2" \$298 \$300 144" \$299 \$301 144 1/2" \$300 \$302 145" \$301 \$303 145 1/2" \$302 \$304 146" \$303 \$305 146 1/2" \$304 \$306 147" \$305 \$307 147 1/2" \$306 \$308 148" \$307 \$309 148 1/2" \$308 \$310 149" \$309 \$311 149 1/2" \$310 \$312 150" \$311 \$313 150 1/2" \$312 \$314 151" \$313 \$315 151 1/2" \$314 \$316 152" \$315 \$317 152 1/2" \$316 \$318 153" \$317 \$319 153 1/2" \$318 \$320 154" \$319 \$321 154 1/2" \$320 \$322 155" \$321 \$323 155 1/2" \$322 \$324 156" \$323 \$325 156 1/2" \$324 \$326 157" \$325 \$327 157 1/2" \$326 \$328 158" \$327 \$329 158 1/2" \$328 \$330 159" \$329 \$331 159 1/2" \$330 \$332 160" \$331 \$333 160 1/2" \$332 \$334 161" \$333 \$335 161 1/2" \$334 \$336 162" \$335 \$337 162 1/2" \$336 \$338 163" \$337 \$339 163 1/2" \$338 \$340 164" \$339 \$341 164 1/2" \$340 \$342 165" \$341 \$343 165 1/2" \$342 \$344 166" \$343 \$345 166 1/2" \$344 \$346 167" \$345 \$347 167 1/2" \$346 \$348 168" \$347 \$349 168 1/2" \$348 \$350 169" \$349 \$351 169 1/2" \$350 \$352 170" \$351 \$353 170 1/2" \$352 \$354 171" \$353 \$355 171 1/2" \$354 \$356 172" \$355 \$357 172 1/2" \$356 \$358 173" \$357 \$359 173 1/2" \$358 \$360 174" \$359 \$361 174 1/2" \$360 \$362 175" \$361 \$363 175 1/2" \$362 \$364 176" \$363 \$365 176 1/2" \$364 \$366 177" \$365 \$367 177 1/2" \$366 \$368 178" \$367 \$369 178 1/2" \$368 \$370 179" \$369 \$371 179 1/2" \$370 \$372 180" \$371 \$373 180 1/2" \$372 \$374 181" \$373 \$375 181 1/2" \$374 \$376 182" \$375 \$377 182 1/2" \$376 \$378 183" \$377 \$379 183 1/2" \$378 \$380 184" \$379 \$381 184 1/2" \$380 \$382 185" \$381 \$383 185 1/2" \$382 \$384 186" \$383 \$385 186 1/2" \$384 \$386 187" \$385 \$387 187 1/2" \$386 \$388 188" \$387 \$389 188 1/2" \$388 \$390 189" \$389 \$391 189 1/2" \$390 \$392 190" \$391 \$393 190 1/2" \$392 \$394 191" \$393 \$395 191 1/2" \$394 \$396 192" \$395 \$397 192 1/2" \$396 \$398 193" \$397 \$399 193 1/2" \$398 \$400 194" \$399 \$401 194 1/2" \$400 \$402 195" \$401 \$403 195 1/2" \$402 \$404 196" \$403 \$405 196 1/2" \$404 \$406 197" \$405 \$407 197 1/2" \$406 \$408 198" \$407 \$409 198 1/2" \$408 \$410 199" \$409 \$411 199 1/2" \$410 \$412 200" \$411 \$413 200 1/2" \$412 \$414 201" \$413 \$415 201 1/2" \$414 \$416 202" \$415 \$417 202 1/2" \$416 \$418 203" \$417 \$419 203 1/2" \$418 \$420 204" \$419 \$421 204 1/2" \$420 \$422 205" \$421 \$423 205 1/2" \$422 \$424 206" \$423 \$425 206 1/2" \$424 \$426 207" \$425 \$427 207 1/2" \$426 \$428 208" \$427 \$429 208 1/2" \$428 \$430 209" \$429 \$431 209 1/2" \$430 \$432 210" \$431 \$433 210 1/2" \$432 \$434 211" \$433 \$435 211 1/2" \$434 \$436 212" \$435 \$437 212 1/2" \$436 \$438 213" \$437 \$439 213 1/2" \$438 \$440 214" \$439 \$441 214 1/2" \$440 \$442 215" \$441 \$443 215 1/2" \$442 \$444 216" \$443 \$445 216 1/2" \$444 \$446 217" \$445 \$447 217 1/2" \$446 \$448 218" \$447 \$449 218 1/2" \$448 \$450 219" \$449 \$451 219 1/2" \$450 \$452 220" \$451 \$453 220 1/2" \$452 \$454 221" \$453 \$455 221 1/2" \$454 \$456 222" \$455 \$457 222 1/2" \$456 \$458 223" \$457 \$459 223 1/2" \$458 \$460 224" \$459 \$461 224 1/2" \$460 \$462 225" \$461 \$463 225 1/2" \$462 \$464 226" \$463 \$465 226 1/2" \$464 \$466 227" \$465 \$467 227 1/2" \$466 \$468 228" \$467 \$469 228 1/2" \$468 \$470 229" \$469 \$471 229 1/2" \$470 \$472 230" \$471 \$473 230 1/2" \$472 \$474 231" \$473 \$475 231 1/2" \$474 \$476 232" \$475 \$477 232 1/2" \$476 \$478 233" \$477 \$479 233 1/2" \$478 \$480 234" \$479 \$481 234 1/2" \$480 \$482 235" \$481 \$483 235 1/2" \$482 \$484 236" \$483 \$485 236 1/2" \$484 \$486 237" \$485 \$487 237 1/2" \$486 \$488 238" \$487 \$489 238 1/2" \$488 \$490 239" \$489 \$491 239 1/2" \$490 \$492 240" \$491 \$493 240 1/2" \$492 \$494 241" \$493 \$495 241 1/2" \$494 \$496 242" \$495 \$497 242 1/2" \$496 \$498 243" \$497 \$499 243 1/2" \$498 \$500 244" \$499 \$501 244 1/2" \$500 \$502 245" \$501 \$503 245 1/2" \$502 \$504 246" \$503 \$505 246 1/2" \$504 \$506 247" \$505 \$507 247 1/2" \$506 \$508 248" \$507 \$509 248 1/2" \$508 \$510 249" \$509 \$511 249 1/2" \$510 \$512 250" \$511 \$513 250 1/2" \$512 \$514 251" \$513 \$515 251 1/2" \$514 \$516 252" \$515 \$517 252 1/2" \$516 \$518 253" \$517 \$519 253 1/2" \$518 \$520 254" \$519 \$521 254 1/2" \$520 \$522 255" \$521 \$523 255 1/2" \$522 \$524 256" \$523 \$525 256 1/2" \$524 \$526 257" \$525 \$527 257 1/2" \$526 \$528 258" \$527 \$529 258 1/2" \$528 \$530 259" \$529 \$531 259 1/2" \$530 \$532 260" \$531 \$533 260 1/2" \$532 \$534 261" \$533 \$535 261 1/2" \$534 \$536 262" \$535 \$537 262 1/2" \$536 \$538 263" \$537 \$539 263 1/2" \$538 \$540 264" \$539 \$541 264 1/2" \$540 \$542 265" \$541 \$543 265 1/2" \$542 \$544 266" \$543 \$545 266 1/2" \$544 \$546 267" \$545 \$547 267 1/2" \$546 \$548 268" \$547 \$549 268 1/2" \$548 \$550 269" \$549 \$551 269 1/2" \$550 \$552 270" \$551 \$553 270 1/2" \$552 \$554 271" \$553 \$555 271 1/2" \$554 \$556 272" \$555 \$557 272 1/2" \$556 \$558 273" \$557 \$559 273 1/2" \$558 \$560 274" \$559 \$561 274 1/2" \$560 \$562 275" \$561 \$563 275 1/2" \$562 \$564 276" \$563 \$565 276 1/2" \$564 \$566 277" \$565 \$567 277 1/2" \$566 \$568 278" \$567 \$569 278 1/2" \$568 \$570 279" \$569 \$571 279 1/2" \$570 \$572 280" \$571 \$573 280 1/2" \$572 \$574 281" \$573 \$575 281 1/2" \$574 \$576 282" \$575 \$577 282 1/2" \$576 \$578 283" \$577 \$579 283 1/2" \$578 \$580 284" \$579 \$581 284 1/2" \$580 \$582 285" \$581 \$583 285 1/2" \$582 \$584 286" \$583 \$585 286 1/2" \$584 \$586 287" \$585 \$587 287 1/2" \$586 \$588 288" \$587 \$589 288 1/2" \$588 \$590 289" \$589 \$591 289 1/2" \$590 \$592 290" \$591 \$593 290 1/2" \$592 \$594 291" \$593 \$595 291 1/2" \$594 \$596 292" \$595 \$597 292 1/2" \$596 \$598 293" \$597 \$599 293 1/2" \$598 \$600 294" \$599 \$601 294 1/2" \$600 \$602 295" \$601 \$603 295 1/2" \$602 \$604 296" \$603 \$605 296 1/2" \$604 \$606 297" \$605 \$607 297 1/2" \$606 \$608 298" \$607 \$609 298 1/2" \$608 \$610 299" \$609 \$611 299 1/2" \$610 \$612 300" \$611 \$613 300 1/2" \$612 \$614 301" \$613 \$615 301 1/2" \$614 \$616 302" \$615 \$617 302 1/2" \$616 \$618 303" \$617 \$619 303 1/2" \$618 \$620 304" \$619 \$621 304 1/2" \$620 \$622 305" \$621 \$623 305 1/2" \$622 \$624 306" \$623 \$625 306 1/2" \$624 \$626 307" \$625 \$627 307 1/2" \$626 \$628 308" \$627 \$629 308 1/2" \$628 \$630 309" \$629 \$631 309 1/2" \$630 \$632 310" \$631 \$633 310 1/2" \$632 \$634 311" \$633 \$635 311 1/2" \$634 \$636 312" \$635 \$637 312 1/2" \$636 \$638 313" \$637 \$639 313 1/2" \$638 \$640 314" \$639 \$641 314 1/2" \$640 \$642 315" \$641 \$643 315 1/2" \$642 \$644 316" \$643 \$645 316 1/2" \$644 \$646 317" \$645 \$647 317 1/2" \$646 \$648 318" \$647 \$649 318 1/2" \$648 \$650 319" \$649 \$651 319 1/2" \$650 \$652 320" \$651 \$653 320 1/2" \$652 \$654 321" \$653 \$655 321 1/2" \$654 \$656 322" \$655 \$657 322 1/2" \$656 \$658 323" \$657 \$659 323 1/2" \$658 \$660 324" \$659 \$661 324 1/2" \$660 \$662 325" \$661 \$663 325 1/2" \$662 \$664 326" \$663 \$665 326 1/2" \$664 \$666 327" \$665 \$667 327 1/2" \$666 \$668 328" \$667 \$669 328 1/2" \$668 \$670 329" \$669 \$671 329 1/2" \$670 \$672 330" \$671 \$673 330 1/2" \$672 \$674 331" \$673 \$675 331 1/2" \$674 \$676 332" \$675 \$677 332 1/2" \$676 \$678 333" \$677 \$679 333 1/2" \$678 \$680 334" \$679 \$681 334 1/2" \$680 \$682 335" \$681 \$683 335 1/2" \$682 \$684 336" \$683 \$685 336 1/2" \$684 \$686 337" \$685 \$687 337 1/2" \$686 \$688 338" \$687 \$689 338 1/2" \$688 \$690 339" \$689 \$691 339 1/2" \$690 \$692 340" \$691 \$693 340 1/2" \$692 \$694 341" \$693 \$695 341 1/2" \$694 \$696 342" \$695 \$697 342 1/2" \$696 \$698 343" \$697 \$699 343 1/2" \$698 \$700 344" \$699 \$701 344 1/2" \$700 \$702 345" \$701 \$703 345 1/2" \$702 \$704 346" \$703 \$705 346 1/2" \$704 \$706 347" \$705 \$707 347 1/2" \$706 \$708 348" \$707 \$709 348 1/2" \$708 \$710 349" \$709 \$711 349 1/2" \$710 \$712 350" \$711 \$713 350 1/2" \$712 \$714 351" \$713 \$715 351 1/2" \$714 \$716 352" \$715 \$717 352 1/2" \$716 \$718 353" \$717 \$719 353 1/2" \$718 \$720 354" \$719 \$721 354 1/2" \$720 \$722 355" \$721 \$723 355 1/2" \$722 \$724 356" \$723 \$725 356 1/2" \$724 \$726 357" \$725 \$727 357 1/2" \$726 \$728 358" \$727 \$729 358 1/2" \$728 \$730 359" \$729 \$731 359 1/2" \$730 \$732 360" \$731 \$733 360 1/2" \$732 \$734 361" \$733 \$735 361 1/2" \$734 \$736 362" \$735 \$737 362 1/2" \$736 \$738 363" \$737 \$739 363 1/2" \$738 \$740 364" \$739 \$741 364 1/2" \$740 \$742 365" \$741 \$743 365 1/2" \$742 \$744 366" \$743 \$745 366 1/2" \$744 \$746 367" \$745 \$747 367 1/2" \$746 \$748 368" \$747 \$749 368 1/2" \$748 \$750 369" \$749 \$751 369 1/2" \$750 \$752 370" \$751 \$753 370 1/2" \$752 \$754 371" \$753 \$755 371 1/2" \$754 \$756 372" \$755 \$757 372 1/2" \$756 \$758 373" \$757 \$759 373 1/2" \$758 \$760 374" \$759 \$761 374 1/2" \$760 \$762 375" \$761 \$763 375 1/2" \$762 \$764 376" \$763 \$765 376 1/2" \$764 \$766 377" \$765 \$7



**Needlecraft News**  
by Nancy Baxter

Who gets the most attention in any family? No question about it—the "littles" one of all. For who can resist a baby, cute and cuddly and completely dependent on us for care and affection. Perhaps that's why baby things have long been favorites with needleworkers. For these talented ladies who knit and crochet realize that one of the easiest ways to express their love for the little ones in their families is with beautiful handmade gifts.

**BABY AFGHAN**



experienced knitter. Yet the result is a cover with the distinctive handmade look that a special baby—and what baby isn't special—deserves.

**SHOWER SUGGESTION**

Even if there are no babies in your family, you might want to make this afghan and save it for the inevitable day when a baby shower invitation arrives. Any mother-to-be would be thrilled to receive such a lovely and practical gift and you'd be spared the last minute hustle and bustle that invitations sometimes involve. For your copy of free directions, just send a stamped, self-addressed envelope to the Needlework Department of this newspaper. Request BABY AFGHAN, Leaflet No. B-141.

**Felton**

Felton Methodist Church, the Rev. Hugh G. Johnson, minister. Each Sunday 9:45 a.m. Church School, Richard Adams, general superintendent.

11 a.m. morning worship service. Church organist, Ina Hughes. Adult Choir director, Ina Hughes. Children's Choir director, Rosalie Quillen.

Each Monday evening, 7:30 p.m. Methodist Youth Fellowship, John Kates, president.

Each Thursday evening, 7 p.m. Adult and Children's Choir practice.

Mrs. Lynn Torbert, vice-president of the Woman's Society of Christian Service, presided at the meeting, March 7. Mrs. A. C. Dill was the leader of the worship service and Mrs. Charles Bostick Jr. was in charge of the program. The theme of the program was "How Total is My Stewardship?" Mrs. Howard Henry and Mrs. O. B. McGinness read poems on stewardship. The WSCS will serve the administrators dinner at the Felton School, Thursday evening, March 10.

Mr. and Mrs. James Begley of Wilmington were last Sunday visitors of Mrs. Begley's sisters, Mrs. Elva Schmick, Mrs. William Moore and Mrs. Rube Outten.

Mr. and Mrs. Gene Short of Smyrna were Wednesday evening visitors of Mr. and Mrs. Cliff Chambers.

A/2c and Mrs. Jerry Peuse are receiving congratulations on the birth of a daughter, Shannon Renee, at the Milford Memorial Hospital, March 1. A/2c and Mrs. Peuse reside in the Robert Voshell apartment.

Mr. and Mrs. Wesley Walls of near Harrington were last Tuesday visitors of their daughter, Mrs. Harry Carlisle.

Mr. and Mrs. Leonard Hitch of Delanco, N. J., spent the weekend with her mother, Mrs. Ruth Connelley.

Miss Nellie Hughes was a guest last weekend, in Wilmington, of Mr. and Mrs. T. T. Weldin.

Miss Margaret Reynolds of Wilmington spent the weekend at her home, here in town.

Mrs. Hugh G. Johnson spent Friday in Washington, D. C.

A/2c Paul Brube of Dover Air Force Base has been assigned to duty in Africa. A/2c and Mrs. Grube reside in Miss Nellie Hughes' apartment.

Mrs. Mintie Coverdale of Dover visited her sister, Mrs. Benjamin Coverdale at the Fletcher Nursing Home, Sunday.

Mrs. Anne Sharp spent last Wednesday in Laurel with Mr. and Mrs. James Gray and family.

Sunday guests of Mr. and Mrs. James Raughley were their son and family, Mr. and Mrs. Elton Raughley and daughters, Bonnie and Brenda, of Wyoming.

Don't forget the Firemen's Supper tomorrow, Sat., March 12, starting at 2 p.m. Also keep in mind that the Auxiliary will have aprons and other articles for sale.

**George W. Swain Dies at 85**

George W. Swain, 85, died at the Messick Nursing Home, Harrington, Friday night where he had been a patient since Oct. 1. His wife, Frankie Callaway Swain, died Jan. 9.

He was born in Seaford, son of William and Priscilla Swain. His parents moved to Harrington when he was a child and he has lived here since.

A bookkeeper for the Harrington Milling Company for more than 30 years and retired in Oct., 1956. He was a member of Trinity Methodist Church Fellowship Bible Class and was noted for his attendance record for years.

He also was a past president of the Harrington Fire Company and the State Firemen's Association.

Mr. Swain was a past president of Chosen Friends Lodge No. 35, IOOF, and a past councilor of the Junior O.U.A.M. No. 4 of Harrington.

Services were held at the Boyer Funeral Home, Harrington, Tuesday afternoon. The Rev. Nelson Benjamin, pastor of Trinity Methodist Church, officiated. Interment was in Hollywood Cemetery, Harrington.

He is survived by two sons, Frank G. Abington, Pa.; G. Warren Swain, Dover; one daughter, Mrs. Lloyd O. Wilcutts, Harrington; five grandchildren and three great-grandchildren, and one step-sister, Mrs. Essie Blythe, Ridley Park, Pa.

**Felton Avon Club Notes**

A program on International Relations with Miss Nellie Hughes and her committee, Mrs. Bradley Steele, Mrs. Marion McGinnis, Mrs. Hubert Dill, Mrs. O. B. McGinness and Mrs. Harold Schabinger in charge was presented at the Avon Club, March 2.

Thomas Sorrenson, an exchange student from Copenhagen, Denmark, who is a student at the Milford High School, gave a very

interesting talk on his country. Captain Robert Harrington of Washington, D. C., now stationed at Dover Air Force Base, and who was in the Philippine Islands for two and one-half years, told of his experiences and the life on the islands. Captain Harrington had a number of exhibits that he collected while stationed there.

Mrs. John Burriss of Milford, state chairman of Student Exchange in Delaware, was also a guest of the Club.

Wed., March 16, club members are to meet at the Fire Hall and leave from there at 12:30 to visit an electric kitchen, near Salisbury. This program has been arranged by Mrs. Irwin Richter, American Homes chairman and her committee: Mrs. James Cahall, Mrs. Lewis Taylor, Mrs. Derickson Biggs and Mrs. William D. Hammond.

**Local Lions High in State**

Harrington Lions Club, headed by president Howard Dill, ranks seventh position among the Lions Clubs in the state, it was announced this week by Nicholas Fidanze of Bear.

Fidanze, serving this year as secretary-treasurer of District Governor Constant Brigg's cabinet, has tabulated the results of the last period among the 39 Lions Clubs in the state. He said the clubs are listed in either a small club or large club classification.

Final results of the Lions Club contest will be announced in conjunction with the awards luncheon for the Delaware Lions at the Harrington Multiple District convention May 25-28 at Atlantic City, N. J.

Delmar Lions Club and Wilmington Manor Lions Club are both setting the pace for the large clubs in Delaware. Fidanze reported. Wilmington Manor has sponsored 148 projects this past month while Delmar accumulated a total of 370 points in overall club activity including outstanding performance in inter-club visitations, attendance at club meetings, and support of the Lions Club on the district and international level.

Among the small Lions Clubs in the state, Georgetown is credited with 405 points in overall performance.

Bridgeville Lions Club capped the honors of having the most club activities in the small club classification with a total of 69.

Club in the smaller group and their standings from high to low status in overall club performance are:

Club	Points
Georgetown	405
Camden-Wyoming	391
Murderkill	344
Bridgeville	311
Dagsboro	301
Clayton	299
Harrington	298
Hartley	296
Dewey Beach	290
Brookside	279
Hockessin-Yorklyn	267
Nanticoke	258
New Castle Hundred	250
Smyrna	239
Selbyville	218
Greenwood	180
Milton	171
P Townsend	170
Greenville	170
Delaware City	155
Middletown	80

Large Club classification for

overall performance:

Delmar	400
Milford	397
Lewes	345
Christiana Hundred	340
Claymont	334
Wilmington	331
Seaford	309
Dover	303
Laurel	292
Millsboro	288
West Brandywine	288
Wilmington Manor	276
Greenhill	260
Millicreek	257
Brandywine Hundred	257
Lors Baltimore	237
Rehoboth Beach	190
Newark	65

For the clubs having the best performance in overall club activities, Camden-Wyoming sponsored 55 projects among the small clubs.

**Houston**

Sunday School at 10 a.m., Robert H. Yerkes Sr., general superintendent; Alvin O. Brown, sup. of the junior department and Mrs. William Scott of the cradle roll.

The service of worship begins at 11 a.m. with the organ prelude, Mrs. Agnes Webb at the organ assisted by John Clark at the piano.

Call to worship by the pastor, the Rev. Ray W. Kirwan. The Senior and Junior Choirs will furnish special numbers and the minister will bring the message.

Methodist Youth Fellowship will hold its meeting at 6:45 p.m. Deepest sympathy from our church and community goes out to the Rev. Ray W. Kirwan and family, for the death of Mr. Kirwan's 85-year-old mother, Mrs. Martha A. Kirwan, at the home of her sons, Morgan B. Kirwan, at Taskan, Md. Funeral services were held from the Messick Funeral Home, Bivalve, Md., Thurs., March 3, at 2 p.m. Interment was in the cemetery at the Methodist Church, Bivalve, Md.

Miss Rosanna Messick returned to her home from Milford Memorial Hospital Tuesday of last week, but is still quite ill.

At a late report, the condition of Mrs. Carl Prentice showed improvement. She is a patient in the Milford Memorial Hospital.

We were sorry to report, Carl, infant son of Mr. and Mrs. Robert Snyder, was in the hospital with pneumonia.

Mr. and Mrs. Franklin Morgan had as dinner guests Sunday, Mrs. Minnie Armour, Mrs. Amanda Williams, and Mr. and Mrs. Edward Williams and sons of Milford.

Mr. and Mrs. Emmett Harrington spent Sunday in Wilmington visiting Mr. and Mrs. Paul Caldwell and Mr. and Mrs. Herbert Thompson in Wilmington.

Mrs. Anna T. Hawkins and friend, Raymond Bunting, spent last weekend in Washington, D. C., with Mrs. Hawkins' son, Ray, and family. They also attended a wedding.

Mr. and Mrs. Reube Bennett of Yorklyn, were callers at the home of Mr. and Mrs. Edward Passwaters Sunday, when Mr. Passwaters celebrated his 80th birthday anniversary. Mrs. Passwaters celebrated her 80th anniversary Thurs., March 4.

Reports from Linda Manlove, granddaughter of Mr. and Mrs. Everett Manlove are encouraging. Linda is slowly improving from rheumatic fever, but will be a patient in the Arlington Hospital,

Arlington, Va.

The Houston Demonstration Club will have a class on making at the Houston Fire Hall Fri., March 18, from 1:30 to 4 p.m. All members please have the necessary supplies and be at the workshop on time.

The Methodist Youth Fellowship will hold a Lenten breakfast Sunday morning, March 20, in the Fellowship Hall.

**Nomination Committee Named For C. of C.**

Charles L. Peck, Jr., was named chairman of the Nominating Committee at the March meeting of The Chamber of Commerce Tuesday at The Wonder R. Vice president Thomas Clendenning presided.

Other committee members named were T. Brinton Holloway and Samuel A. Short Jr.

The committee will present the nominees at the April election.

Besides the vice president, incumbent officers are President William W. Shaw, Treasurer Arnold Gilstead, and Secretary Carlington H. Burgess.

The Chamber voted to ask Fulton J. Downing to represent it at a civil-defense conference in Wilmington March 18-19.

**BE WISE — ADVERTISE SHOP AND SWAP IN THE WANT ADS**

**Felton School News**

**Student Council Assembly**

On Wednesday, March 16, the Felton High School Student Council will present a special assembly program to the high school and elementary school. The assembly program will feature The Koehlers. The program will demonstrate physical education at its finest.

Mr. and Mrs. Koehler will demonstrate the elementary steps to become a good ground tumbler and then move on to the most difficult and intricate movements involving great coordination, timing, and balance. Their program will include hand balancing, tumbling, trampolining, and aerial maneuvers.

**Athletic Banquet**

The Felton High School Athletic Banquet which was scheduled for Saturday, March 5, and which was postponed because of the snow storm, has been rescheduled for Saturday, March 12. As previously scheduled, the banquet will be held at Alexander's Restaurant in Dover at 7:00 p. m. Letters and certificates will be awarded to the boys and girls Varsity and Juniors Varsity players, and to the cheerleading squad.

The main speaker of the evening will be Pat Knight, whose topic will be "High School Athletes and Their Rewards." Felton School Custodians will attend a special training session in Dover, Saturday, March 12. Custodians from all the schools in Kent County will receive either advance instructions or refresher courses in various phases of custodial duties and methods. This training is designed to keep them abreast on the latest developments in maintenance and operation of the school plant. These men who participate in the course qualify for promotion to higher certificates or for renewal of certificates already held.

**Fourth Marking Period**

The 4th marking period ends Tuesday, March 15. Report cards will be issued Monday, March 21. These dates are later than originally scheduled because of two days lost last week, on account of the snow storm. These days will be made up on June 9th and 10th.

**BE WISE—ADVERTISE**

*Apple Blossom*

A THODORE HAVLAND CLASSIC. THE DELICATE SPRAY IS A MELLOW BLENDING OF SOFT PINKS AND GREENS.

**Obenour-Bullard**  
MADE IN AMERICA

PLACE SETTING: Consisting of one each: Dinner Plate, Salad Plate, Butter Plate, Tea Cup and Saucer — \$15.95

**CLARKE AND McDANIEL**  
Gift Shoppe and Druggists  
25 Lockerman St.  
RE 4-2741 Dover, Del.

**St. Stephen's Episcopal Church Notes**

The World Day of Prayer service originally scheduled for Friday, March 4, 8 p.m. will be held Fri., March 18, 8 p.m., at St. Stephen's. Participants will be the same as those originally listed in the Harrington Journal of March 4.

Mesdames Milton Bland, Robert McNally, Robert Nelson, Arthur Williams, and George Thompson attended the Diocesan Quiet Day sponsored by the Episcopal churchwomen of Delaware and held at St. Peter's Church, Smyrna, Feb. 25.

The schedule began with Holy Communion at 10 a.m. The preparation, first meditation, and second meditation preceded the box luncheon, at 12:45 p.m. The third meditation started at 1:45 p.m. with adjournment at 2:45 p.m.

Among out-of-town guests who recently signed the register at St. Stephen's were Mrs. Mary H. Hammelt of Washington, D. C.; Mrs. Mary R. Davis, Dover; Miss Eileen E. Ferne, Seaford; Misses Pam Learned, Candy Hulbrunn, Cheryl Ann Evans, Camden; John Sigler, Jim Cresson, Terry Willey, Russell Mills Milford; Miss Ann Cullen, Dover; George H. Coppage, John and James Nuss, Camden; Mrs. Viola Willey, Misses Donna Fischer, Marsha Prettyman, Carolyn Ricker, Milford; Miss Bobbie Ann Hill, Lincoln; Miss Joyce Harrington, Houston; Miss Judy Fritz, Dover.

Flowers on the altar the first Sunday in Lent were given to the glory of God and in memory of Almira Hill by Mr. and Mrs. Granville J. Hill.

The eleven o'clock service each Sunday in March will be broadcast over a near-by radio station.

The women of St. Stephen's will hold their March meeting Tues., March 15, 8 p.m. at the parish house.

The congregation of St. Stephen's extends its sympathy to Mrs. Clarence Reed and her family in the death of her mother, Mrs. Anna Bickley of Philadelphia, Monday, Feb. 29. Mr. and Mrs. Reed and Miss Viva left for Philadelphia immediately and remained until Sunday. The funeral was held Fri., March 4.

The Rev. Jonas Ewing White Jr., first American priest of the Episcopal Church to serve in the Republics of Honduras and El Salvador, now on furlough in this country, visited St. Stephen's Mon., March 7.

The Reverend Mr. White had lunch with the vicar, visited at the home of Dr. and Mrs. Hewitt Smith and spoke to some members of St. Stephen's, who were able to get together for the occasion in spite of the weather.

He described the church's work among the Spanish speaking people of Latin America, the great need for prayer, gifts of money, and dedicated young men and women to carry Christ's message to these people.

Mr. White said he was shocked at the complacency and indifference of Christians in the United States to vast need and restlessness in countries all around. If the children of today are to enjoy living in a free country like the United States, the citizenry must make sacrifices and come to the aid of their neighbors, he stated. He gave startling figures on illiteracy and population growth in Central America.

After his speaking tour in this

country, Mr. White will be in La Ceiba, Honduras, among the "ladinos," the indigenous population of Honduras.

**1959 H.H.S. Grads Make Progress**

The proof of the pudding is in the eating. We now have the first semester grades on Harrington Graduates attending colleges and universities. There are six Harrington graduates in the freshman class of the University of Delaware. All six of these people made acceptable grades the first semester—no one failed a single subject. The first semester at any university is usually the most difficult. The attrition rate of the freshman class at the university this year was high. Two of last year's graduates are attending universities outside of the state. Both of these students also have fine records with no subjects failed the first semester. These eight people all had some form of scholarship ranging in amounts from \$200, to \$900. Their record this first semester certainly justifies the scholarships that they received. Two other graduates of this class are attending Godey Beacom School of Business—both were on the honor roll for the first semester. All of the remaining graduates of last year's class with one or two exceptions are successfully employed. Many of them are employed using directly the training received at Harrington High School as secretaries and bookkeepers with the International Latex Co. in Dover, Dover Air Force Base, L. D. Caulk Co. in Milford, the State of Delaware, and several other local concerns.

It is interesting to note also that from the report from the University of Delaware that three Harrington graduates are on the Dean's list—two in the Senior Class and one in the Sophomore class.

Harrington High School is proud of these young people and feel that all the citizens of the Harrington Special School District have reason to be proud and to feel that they are receiving full value for their school tax dollar.

E. A. Rutledge  
Guidance Counselor  
Harrington High School

**Hickman**

Mr. and Mrs. Wheatley Neal and Charlotte Louise of Denton were Sunday guests of Mr. and Mrs. Paul Scott and family.

Mr. and Mrs. Donald MacDonald, Donald, III, and Cindy, were last Monday evening visitors of Mr. and Mrs. Carl Parker.

The Rev. and Mrs. Ira Crum of Cecilton, Md., were recent visitors of her sister and family, Mr. and Mrs. Clarence Porter.

Miss Gail Breeding spent the weekend with her sister and family, Mr. and Mrs. William Coady.

Mr. and Mrs. Merle Shaner of Denton were last Thursday evening visitors of Mr. and Mrs. Carl Parker and Billy.

Mr. and Mrs. William Coady entertained several guests Sunday evening. The evening was spent playing rook and making ice cream.

Floyd Messick returned to his home Monday from the Milford Memorial Hospital.

Mr. and Mrs. Clarence Breeding were recent evening visitors of Mr. and Mrs. Otis Breeding.

**SHOP AND SWAP IN THE WANT ADS**

**GOOD RESULTS**  
when Mr. Buyer meets Mr. Seller  
in the  
**WANT-ADS**

**COMMERCIAL PRINTING**

Have Been Doing It For 36 Years... Most Weekly Newspapers Usually Do Commercial Printing... It Oftentimes Means the Difference Between Oleo or Butter on Their Bread... On Occasions People Have Said, "We Didn't Think You Could Do This Job, So We Let the Whoozit People Do It... Unless You Are An Expert on Printing, Let Us Decide What We Can Do... If You Are An Expert, Come In: Maybe We Have a Job For You... See Us For a Price On Wedding Invitations - Announcements - Tickets - Salesbooks - Envelopes - Chances - Sale Bills - Multiple - Forms Snap - Easy Sets - Brochures - Booklets - Business Cards - Letterheads - Statements or Bill heads - Programs - Circulars - Direct - Mail Material.

If You Need Printing, Buy It Now and, For Economy, Buy In The Largest Quantity Possible - Certain Types and Colors of Paper Are Hard To Get and Are Getting Scarcer All The Time. Get Yours While The Getting Is Good.

**The Harrington Journal**

**A Subscriber of Blue Cross-Blue Shield Speaks...**

A Wilmington waitress says: "I like Blue Cross-Blue Shield because it makes me feel 'cared for.' It's comforting, as I get older, to realize that Blue Cross, besides helping me financially in the hospital, is also interested in my health care."

(from the files of Blue Cross-Blue Shield)

Blue Cross-Blue Shield benefits are based on care, not on fixed dollar allowances. It's the best protection your money can buy.

**GROUP HOSPITAL SERVICE, INC.**  
908 West Street • Wilmington 99, Delaware  
Offices: Seaford and Milford

---

**ENTRY BLANK**  
**Harrington P.T.A. Talent Contest**  
SATURDAY, MARCH 26 - 7 P.M. - Harrington High School

Group 1 (thru 6th grade) .....  
(Enter your specialty here)

Group 2 (thru 12th grade) .....  
Group 3 (Adults) .....

Your Name .....

Address .....

Home Phone .....

**PRIZES IN EACH CLASS PLUS GRAND PRIZE**

Clip this out and mail to **HAROLD WELCH**, 203 Center St., Harrington. Dancing will follow the talent contest.



### Group Hospital Service Approves Extended Benefits

The board of trustees of Group Hospital Service, Inc., has approved the offering of the "730-day" coverage of extended benefits to an additional number of categories of subscribers, H. V. Maybee, managing director of the Blue Cross-Blue Shield Plan announced yesterday.

This is an advancement of the Blue Cross program which was adopted in 1955; he said, and has proved to be a successful operation. It is hoped that this will be accepted as well as other programs which have been offered by the Blue Cross-Blue Shield Plan in the past 25 years.

"For some time the board has contemplated this offering," Mr. Maybee said. Up to this time the extended benefits coverage has been offered only to groups who qualified for enrollment in this plan which is designed to help members meet the costs of long-term illnesses, major accidents, and operations with long recovery periods.

Now the following categories of Blue Cross-Blue Shield subscribers will be offered extended benefits coverage:

1. Pensioners of Blue Cross-Blue Shield groups with extended benefits who have had to give up this special coverage when they retired from the group. Pensioners who remit their Blue Cross-Blue Shield dues through a group are eligible for the coverage.

2. Those former employees of extended benefit groups whose extended coverage was terminated when they left the group.

3. Non-group members under age 65 who pay their dues directly to the Blue Cross-Blue Shield office.

4. Student contract holders.

5. Nineteen-year-olds who had extended benefits on their parents' family contract. Children remain under their parent's family contract up to their 19th birthday.

Extended benefits membership to groups will be offered on the same basis as in the past. There are now over 300 extended benefit groups in the state with 92,455 members with extended coverage. In the state there are over 2000 Blue Cross-Blue Shield groups; most of the 281,770 members of the Delaware Blue Cross-Blue Shield Plan belong through groups where they work. About 45,000 of them belong through the non-group plan since they are not eligible to belong to a group.

This offering will, however, permit those group members with extended benefits coverage who leave the group for one reason or another to continue this added protection.

The rates to the categories of members listed above will be \$1.50 per month for an individual and \$3 a month for other types of contracts.

Announcement of this board action has been mailed to each extended benefits group. All subscribers in the "direct-payment" category who are under age 65 will receive an individual notification that coverage will be made available to them with an effective date of membership April 1, 1960.

### Dairymen - Try Using This Bean

Dairymen can cut costs by feeding home grown soybeans and corn, reports George Vapaa, Kent County agricultural agent.

"Ground, raw soybeans are a good source of protein. And when mixed with corn-and-cob meal, they make a money-saving dairy ration that's hard to beat," he said.

He recommends that between 150 to 200 pounds of molasses be added to each ton of feed. The molasses will cut down dust and make the ration more palatable.

The county agent said that recent research shows that soybeans fed to dairy cows resulted in a slightly higher fat test.

Several dairymen in the county are pleased with the results of a feed ration which uses 1300 lbs. of corn and cob meal; 500 lbs. of raw, ground soybeans; 150 pounds of molasses; 20 lbs. of salt; and 20 lbs. of dicalcium phosphate. Steve Szelesti of Hartly is one farmer who plans to try it. His request for this information suggests that others may want to try it.

Dairymen using raw, ground soybeans in dairy feeds should not use any supplements which contain urea. Mr. Vapaa warned. Soybeans react with urea to give off ammonia making the feed unpalatable. He also pointed out that raw soybeans should not be fed to young dairy calves.

### HDC News

The Harrington Home Demonstration Club will hold its regular meeting Monday at 2 p.m. on Liberty Street.

### January Nonfarm Employment Set At 149,400

Although nonfarm employment in Delaware showed no change in the December to January period the 149,400 total was 4000 higher than for January a year ago and 2,400 greater than January, 1958.

Primarily responsible for keeping total employment on an even plane over the month were the manufacturing industries and more specifically the durable goods segment. The latter group showed an overall gain of 2900 as the machinery and transportation equipment industry jumped 3400 when one of the state's large automobile manufacturers returned 3300 workers to their jobs after a layoff the previous month in a delayed reaction to the steel dispute. On the debit side, primary metals lost 300 when a strike idled an establishment employing 230 persons; fabricated metals showed no change while "all other durable goods" slipped from 2500 to 2300 as seasonal factors affected some places of business.

Nondurable goods went up 200 as a number of industries showed small gains of 100 each and several others maintained an even keel. In fact, the only change of any note was a seasonal drop of 200 in the food industry which was more than offset by the above mentioned rises.

Nonmanufacturing dropped a total of 3100 workers as contract construction continued its annual descent, dropping 1400 to a January total of 11,200; wholesale and retail trade lost 1700 as layoffs occurred after the Christmas season. Government employment showed a 300 decline for the same reason; this loss was counterbalanced by a rise in the service and miscellaneous industries. Other industries comprising the non-manufacturing group maintained their December levels. However, when compared with a year ago, nonmanufacturing showed a total gain of 3000 workers during the twelve months with contract construction the chief beneficiary as employment was up 1800 from January, 1959.

Average weekly hours, average hourly earnings and average weekly earnings also advanced, once again reflecting the change in the machinery and transportation equipment industry as average wages in that industry increased from 87.68 to \$105.60. The workweek increased 7.7 hours to 39.7 although average earnings did decrease eight cents per hour to \$2.66 as the bulk of the rehired workers were in the lower pay groups. Fabricated metals showed a loss of \$4.74 in weekly earnings and 1.8 hours in weekly hours as overtime in the industry decreased but this was partially offset at "other durable goods" increased \$.11 in hourly earnings resulting in an even \$5 rise in weekly earnings. Nondurable goods increased slightly with most industries showing no startling changes with the exception of "other nondurable goods" where average weekly hours jumped 2.0 hours to 44.4 and average hourly earnings increased to \$3.08 from \$2.92 in December. Compared with January, 1959, hours and earnings were up in all categories.

The labor turnover accession rate dropped sharply to 2.3 per one hundred workers from 11.6 per one hundred the previous month, while the separation rate dropped from 7.3 to 2.1 with layoffs declining from 6.0 to 0.7 per one hundred over the month. The quit rate remained constant. All these once again were influenced by the machinery and transportation equipment industry where tremendous change took place as a result of the rehiring of 3300 workers in automobile manufacturing.

Registrations sought for kindergarten

Registration for enrollment in Harrington Kindergarten for the school year, 1960-61, are now being accepted.

Any interested parties may contact Mrs. Frank Quillen or Mrs. Earl Nelson for registration forms. It is requested that registration be made by April 15.

ROLLER RINK ENTERED

The Diamond State Roller Rink, located on Route 13, north of Felton, was entered and roller skates valued at \$110 stolen Monday night. The intruders got into the building through a rear window.

SHOP AND SWAP IN THE WANT ADS

A REMINDER ABOUT YOUR FEDERAL INCOME TAX

The United States Treasury has asked all payers of dividends and interest to remind their shareholders and depositors that dividends and interest, whether paid to you or credited to your account, are subject to Federal income tax and should be reported if you are required to file a Federal income tax return.

The principal categories of interest and dividend income which are subject to Federal income tax are:

1. Dividends from corporate stock, both common and preferred.  
2. Dividends of building and loan associations, savings and loan associations, and credit unions.  
3. Dividends of mutual investment funds or investment trusts.  
4. Interest on bonds, notes, or other obligations of corporations.  
5. Interest on United States Government bonds, notes, or other obligations (including interest on E, G, and H Savings bonds).  
6. Interest payments made by banks, individuals, life insurance companies, mutual savings banks, and interest payments on postal savings accounts.

The Treasury Department has announced that special attention will be paid by the Internal Revenue Service to the reporting of interest and dividend receipts this year. You will note that individual income tax returns have been revised to emphasize and facilitate the reporting of income from these sources.

This reminder is furnished as a service to our depositors and as an aid in the preparation of your Federal income tax return.

### Dairy Goals Set For 1960

"Let's set a Kent County goal in 1960 of 10,000 lbs. of milk and 400 lbs. of butterfat per cow" was the challenge of Dr. W. R. Hesselstine last Thursday night at the annual meeting of the Kent County Dairy Herd Improvement Association. Ninety farmers and guests meeting at the Viola Community Hall were told that the association averaged 9,763 lbs. of milk and 368 lbs. of butterfat per cow in 1959.

Maurice Adams of Harrington was the top individual farmer with a herd average of 13,320 lbs. of milk and 480 lbs. of butterfat. Delbert Cain also of Harrington, averaged one lb. less of butterfat of 479, but he averaged more milk per cow, 13,717 pounds. Other herds producing at least 400 lbs. of butterfat per cow included the Burwood Farm of Walter Holt, Arthur Short & Son of Smyrna, Bancroft and Thomas of Camden, Albert J. Wright of Wyoming, and Charles C. Blendt of Smyrna.

Four directors were elected: Joseph Moore of Dover, Jack Webb Jr. of Goldsboro, William Eliason of Harrington, and Louis Wright of Wyoming.

4-H youths provided musical entertainment. Betty Dixon of Kenton and Eleanor Lee Hutchins of Dover did a duet, and Wayne Currey of Wyoming offered several accordion selections.

The two herd supervisors, Frank Searles of Harrington, and B. Lee Currey of Wyoming were recognized for superior work as herd testers in the State of Delaware. Arthur Short & Son were presented with an Efficient Dairyman plaque based on good management practices.

Dr. Morris Cover, head of the Animal Industry department of the University of Delaware, suggested that farmers be careful in the use of antibiotics with dairy animals.

Farmers too were cautioned by Dr. Hesselstine to continue grain feeding when cattle move on to spring pastures. "We do know that there is some stimulus to give increased milk production from new pastures," he said. "But the gain in milk is only temporary, and your cows will quickly drop in milk production unless they get enough nutrients. New pasture is about 90% water, and because of its bulk in relation to nutrients, one should continue to use some concentrates as grain," he concluded.

Registrations sought for kindergarten

Registration for enrollment in Harrington Kindergarten for the school year, 1960-61, are now being accepted.

Any interested parties may contact Mrs. Frank Quillen or Mrs. Earl Nelson for registration forms. It is requested that registration be made by April 15.

ROLLER RINK ENTERED

The Diamond State Roller Rink, located on Route 13, north of Felton, was entered and roller skates valued at \$110 stolen Monday night. The intruders got into the building through a rear window.

SHOP AND SWAP IN THE WANT ADS

A REMINDER ABOUT YOUR FEDERAL INCOME TAX

The United States Treasury has asked all payers of dividends and interest to remind their shareholders and depositors that dividends and interest, whether paid to you or credited to your account, are subject to Federal income tax and should be reported if you are required to file a Federal income tax return.

The principal categories of interest and dividend income which are subject to Federal income tax are:

1. Dividends from corporate stock, both common and preferred.  
2. Dividends of building and loan associations, savings and loan associations, and credit unions.  
3. Dividends of mutual investment funds or investment trusts.  
4. Interest on bonds, notes, or other obligations of corporations.  
5. Interest on United States Government bonds, notes, or other obligations (including interest on E, G, and H Savings bonds).  
6. Interest payments made by banks, individuals, life insurance companies, mutual savings banks, and interest payments on postal savings accounts.

The Treasury Department has announced that special attention will be paid by the Internal Revenue Service to the reporting of interest and dividend receipts this year. You will note that individual income tax returns have been revised to emphasize and facilitate the reporting of income from these sources.

This reminder is furnished as a service to our depositors and as an aid in the preparation of your Federal income tax return.



### Projects List For 4-H Club Members Growing Longer

The list of projects for 4-H club members to select from is growing longer, reports Marion MacDonald, Kent County 4-H Agent.

One of the newly developed 4-H Conservation projects is for the birds. The project is called, "Know Your Birds," and is made to order for urban and rural club members.

Club members, taking this project, study birds and learn to identify them. Also complete directions are included in the project on bird feeding and how to build a bird feeder.

Another new 4-H project is the dog husbandry project. The project includes information on proper feeding and care of a dog, the best methods in teaching dogs new tricks, how to identify dog breeds and how to train a dog for the show ring. Also, the member keeps an accurate record on the growth and development of his dog during the year.

Still another new project is in automotive safety. With this new project Kent County 4-Hers can now hit the road to safety. Care and safety of the car are emphasized in the project. The project was written in co-operation with the National Safety Council and features a two-fold educational approach to developing safety conscious teenage drivers.

Club members are reminded that they can compete for 4-H awards in many other project areas. Some of the most popular are: Clothing, Foods, Field Crops, Gardening, Dairy, Home Beautification and Entomology.

For more information about 4-H projects and on how to join a 4-H Club in your area contact Marion MacDonald, 4-H Club Agent, Post Office Building, Dover.

### Andrewville

The Rev. J. J. Hagel of Salisbury, a former pastor of Bethel Church will conduct revival services at Bethel Church Friday evening at 7:30 o'clock.

Mr. and Mrs. Kenneth Prettyman and daughter, Cheryl, of Seaford, visited their parents, Mr. and Mrs. Walter Paskey, and Mr. and Mrs. Edwin Prettyman Sunday.

Mr. and Mrs. Wallace Ryan, Mrs. Bessie Butler visited Mr. and Mrs. Elver Ryan Saturday afternoon.

Mr. and Mrs. Elver Ryan visited Mr. and Mrs. Russ Scarborough Sunday.

Mr. and Mrs. James Morgan were dinner guests of Mr. and Mrs. Fred Walls last Thursday.

Mr. and Mrs. Donald Jones and daughters called to see Mr. and Mrs. Fred Walls Saturday evening.

### Mrs. Charles W. Willis

Mrs. Grace O. Willis, wife of the late Charles W. Willis, Burrsville, died in Milford Memorial Hospital early Thurs. March 3, after suffering a stroke in her home three weeks ago.

Mrs. Willis was born in Ridgely Md., daughter of the late Andrew and Emily Willoughby, and lived in Burrsville area most of her life.

She was a member of Wesley Methodist Church, Burrsville, and its W.S.C.

Surviving is a daughter, Mrs. George W. Cain, Harrington, and two sons, Walton Willis and Winfield Willis, both of Burrsville; four grandchildren; one brother, Raughlins Willoughby, Ridgely, and three sisters, Mrs. Arthur Kelly, Burrsville, Mrs. Enoch Strannahan and Mrs. Stanley Strannahan, both of Ridgely.

Services were held from the J. Millard Cooper Funeral Home, Harrington, Monday at 2 p.m. The Rev. Donald Hurst, pastor of Wesley Methodist Church, Burrsville officiated. Interment was in Greensboro Cemetery, Greensboro, Md.

### Armed Forces Notes

Army Specialist Four Louis Dexter, 23, whose wife, Marian, lives at 57 Church St., Bridgeville, recently arrived in Germany and is now a member of the 3d Armored Division.

Specialist Dexter, a rifleman in Company D of the division's 36th Infantry in Kirch Gons, entered the Army in January 1956 and was last stationed at Fort Myer, Va.

Dexter, son of Mrs. Alphia Dixon, 533 Avenue A, Belle Glade, Fla., attended Everglades (Fla.) Vocational High School. His father, Harry Dexter, lives at 1837 N. Columbus St., Arlington, Va.



DELAWARE'S OLDEST BANK

All deposits insured up to \$10,000 by the Federal Deposit Insurance Corporation

### Bids Opened For Liberty St. Improvements

Bids for three contracts were opened by the State Highway Department at Dover, Wed., March 2.

Low bidder for the reconstruction of Liberty Street in Harrington was the Delaware Roads Company of Mt. Pleasant at \$94,858.95. There were four other bidders.

Liberty Street will be widened to 36 feet from Delaware Avenue to Route 13, paved from curb to curb with six-inch macadam base and three inch surface material and some drainage will be installed.

George and Lynch, Inc. of Wilmington, submitted the low bid of \$87,350 for the resurfacing of the existing highway from Hartly to Everett's Corner, a distance of 2.9 miles. There were six bidders on this project.

The improvement of eight existing dirt roads in lower New Castle County attracted 12 bidders with A. H. Smith, Branchville, Md., submitting the low bid of \$194,130 for the project which totals 13.66. Most of these roads extend north and south, connecting existing improved roads in an easterly and westerly direction.

In all 14 contractors submitted 22 bids with the total amount of the low bids being \$276,338.95.

### Do It Now! Says County Agent

Every county agricultural agent has a little philosopher in him, especially when winter begins to break up, and Kent county agent George Vapaa is no exception. One of his favorite sayings is "Do It Now."

Lately he has been applying this one to the job of getting ready for the spring planting. He says there is no better time than right now to get your equipment ready.

He says a thorough checking of the corn planter might save you money. If you have one of the old split boot planters you should check to make sure the divider has not rusted out. If it has, the corn and fertilizer will drop together. Only the fertilizer will survive, he says, and the ragweed will get that.

While you're at it you may just as well get that old split boot off there and put on side banders. He says many of the old split boots can be replaced with side banders rather cheaply.

He suggested doing it now!

### Of Local Interest

Bobby Carroll, Billy Hopkins, and Donald Feyerabend left recently for Ft. Knox, Ky., where they will undergo six-months' training as part of their National Guard service.



this man gives you driving pleasure

He gives your car a lift through proper lubrication. He helps you avoid trouble by keeping those bearings from getting too dry. Come let our expert lube man grease your car to insure you of smoother driving!

ONE stop here will keep you safely on the GO!

FRY'S AMOCO SERVICE

EX 8-3700

Harrington, Del.

Northbound Lane U. S. 13

### VA to Start 1960 Census April 1

The 1960 census, starting April 1, will be of more than usual interest to veterans and their families for it will seek the latest accurate information on the total veterans' population figures as well as an authoritative benchmark when veterans services or legislation come under consideration.

Census takers will not ask this information on their visit to each household. Instead they will leave at every fourth household a special questionnaire for each person residing there. A box, numbered "P-35" on this questionnaire, supplies space to check off whether or not the individual is a veteran and in which war period he served.

Leon Fields, manager of the Wilmington Regional Office said that veterans organizations are joining with the VA in asking that each veteran, in every fourth household selected, fill out the form promptly and correctly and see that it is mailed back to the designated address.

**PAINT**

---

**ROOMS**

---

**EASIER**

---

**with**



**\$4.95 per gal.**

---

**Taylor's Hardware**  
Phone EX 8-3634  
Harrington, Del.

**ANNOUNCING...TWO NEW-SIZE WAGON WONDERS!**



The new Tudor and Fordor Falcon Wagons—sixth and seventh wonders of the Ford wagon world

See "FORD STARTIME" TV's finest hour, in living color Tuesdays on NBC-TV

**AMERICAS LOWEST-PRICED 6 PASSENGER STATION WAGONS**

**THE NEW FORD FALCON WAGONS**

COME SEE ALL SEVEN WONDERS OF THE WAGON WONDERLAND FROM **FORD** AMERICA'S WAGON SPECIALISTS

**FORD**—The Finest Fords of a Lifetime **FALCON**—The New-size Ford **THUNDERBIRD**—The World's Most Wanted Car

**SIMPSON FORD, Inc.**

PHONE EX8-3234 P. O. 296 U. S. 13 HARRINGTON, DEL.



**W.S.C.S. News**

A joint meeting of the Woman's Society of Christian Service of both Asbury and Trinity Methodist Churches was held Tuesday evening, March 1, at 7:30 in Trinity Church. The occasion was the District Officers Visitation Night. 31 members from the Asbury Society were present.

The devotional service was led by Mrs. John Walls and Mrs. Samuel Williams presented the program entitled "How Total Is My Stewardship." The theme song of the society "There's A Light Upon the Mountain", was played by Randall, Randy and Donnie Knox as an instrumental trio with Mrs. Earl Sylvester at the piano.

Mrs. Williams introduced the two district officers who were present. Mrs. I. Cornealuis King of Milton, promotion secretary, spoke on the purpose and the work of the circles in the Society, as well as membership and the meaning of the pledge. Mrs. Albert Davidson of Harbeson who is secretary of literature and publications told of the wide variety of literature that is available to each society and all of the members.

A social hour followed. Mrs. Fred Greenly Sr. announced to the group that the World Day of Prayer will be held at St. Stephen's Church Friday evening at 8 p.m. All women of the church are urged to attend.

March 18 has been the date selected for the clam chowder sale sponsored by the society. Take out orders of clam chowder, home made rolls and pie can be phoned to Mrs. Dewitt Tatman, Mrs. Francis Winkler or Mrs. Mark Willey before that date. The sale will start at 4 o'clock. Each person will be asked to bring their own container.

Wed., March 23, the Dover District Day Apart Service will be held in the Sanctuary at Asbury Church. The service will begin at 10:30. Mrs. Ralph D. Smith of Washington, D. C. will be the guest speaker. Asbury Society will serve a beverage and dessert at noon time, but each woman is asked to bring her own box lunch.

The calendar for March for the members of Asbury Society is quite a busy one. Each woman will find that participation in the activities will bring her a sense of fulfillment that she can find no place else.

**Century Club Notes**

The needles and thread of local clubwomen were flying today as plans to enter a nation-wide fashion sewing contest were announced by the Harrington New Century Club. Designed to select the "Ideal Costume for the Clubwoman's Wardrobe," the National Contest is being sponsored for the second consecutive year by the General Federation of Women's Clubs, Washington, D. C., with the co-operation of Vogue Pattern Service.

Mrs. Arnold Gilstad, local chairman for the fashion-sewing contest announced this week that any club members who are planning to compete in the local contest must model their creations at the next club meeting on Tuesday afternoon, March 22. Any member who has made a costume from a Vogue pattern this year may enter it in the contest and is urged to do so. Mrs. Gilstad will be happy to answer any questions that contestants have.

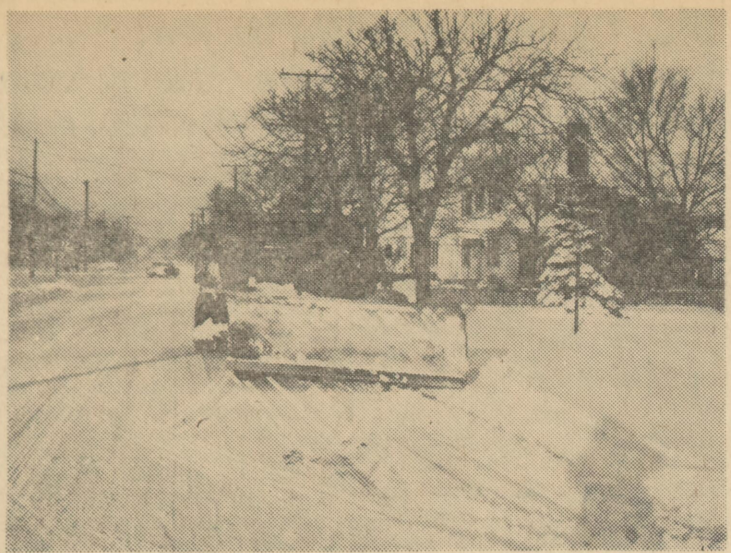
The winner in the Harrington Club will become eligible for participation in the second round of the contest when judgments at the district level of the Federation are held. This judging will be held at the University of Delaware April 6. Anyone who is planning to attend this show must notify Mrs. William Shaw at EX 8-8340 before March 15.

Prizes of \$100 and \$25, a three week trip to Paris and London are only part of the awards for the winners in the sewing contest. Enter now and perhaps the grand winner will be from our local club.

**DARC Slides Available For Club**

The Delaware Association for Retarded Children has available a set of colored slides made at the Association's 1959 Day Camp. This camp, operated in suburban Wilmington, is an annual month long affair. It is attended each year by approximately 65 mentally retarded children and is financed largely out of funds from the Wilmington Flower Market.

DARC will, upon request, provide the slides, a projector, and a speaker at no cost. We believe this would make an interesting program for almost any adult or teenage group. Call the Delaware Association for Retarded Children at SY 8-1486 to make a reservation.



Coffee breaks for highway crews at Peoples Restaurant, Clark Street.

**Veterans News**

Here's a quick new-and-old comparison that the Veterans Administration has prepared for veterans, according to Leon Fields, manager of the Wilmington Regional Office.

Under the present pension law, a veteran's pension is, either \$66.15 a month, or \$78.75 if he has been on the pension rolls ten years or has reached age 65.

The one exception would be a veteran in need of regular aid and attendance; he would receive \$135.45 a month.

Under the new pension law which goes into effect July 1, 1960, a veteran's monthly pension payment may vary from a low of \$40 a month to a high of \$100 a month. If he is in need of regular aid and attendance, it could go as high as \$170 a month.

These variations in the new pension payments result from the use of a sliding income scale. The larger pension payments go to veterans earning lesser income or with more dependents.

The old pension law set limits of \$1400 a year for a single veteran and \$2700 a year for veterans with dependents. Once within the income limitations, the payments were the same for all.

The new law, however, provides payments of \$85 a month to single veterans whose annual income is \$600 or less; \$70 monthly to single veterans whose annual income is \$600 or less; \$70 monthly to single veterans whose incomes are not over \$1200, and \$40 monthly to single veterans whose incomes are not over \$1800. Pensions cease after this \$1800 figure.

Veterans with dependents will also receive pensions on a sliding scale; no pension to those with incomes over \$3000 annually; regardless of the number of dependents, those with incomes of between \$2000 and \$3000 will receive \$45 monthly and those with incomes between \$1000 and \$2000 will receive \$75 monthly. Those with an income of \$1000 or less will receive \$90 with one dependent, \$95 with two, and \$100 with three or more dependents.

Those veterans requiring regular aid and attendance would be paid \$70 a month in addition to any of those pension payments listed above.

Veterans can get more complete details at any VA office.

**KERR**

(Continued from page one)

me. He is a wife-made man, and is against any combine his home state is not in on."

Robert F. Kelly, administrative assistant to Senator Frear, was toastmaster.

The guest speaker was introduced by Vernon B. Derrickson, Kent County Democratic chairman.

Among the Democrats at the head table were J. Gordon Smith, chairman of the State Highway Department; Allen J. Cook, president pro-tem of the Senate; Mrs. Belle Everett, Democratic national committee-woman and state treasurer; Elisha Dukes, vice chairman of the Democratic State Committee; Ernest Killen, state auditor; Sherman W. Tribbitt, speaker of the House, and Harry S. Smith, state insurance commissioner.

**TRUCK BIDS**

(Continued from page one)

Tuesday, a standard and advanced first-aid course would be conducted by Instructor George VonGoerres to all members of the ambulance squad, and also to members desirous of joining the squad. The course will be conducted in the firehouse.

After the meeting, Curtis Melvin showed a film, sponsored by The Diamond State Telephone Company, on the new mouth-to-mouth rescue breathing method. This is artificial respiration acclaimed by the Red Cross and the American Medical Association.

**\$140,000 FIRE**

(Continued from Page One)

worked in coats sheeted with ice. No one was hurt.

Added to the crowd of spectators were youngsters home from school because of the snowstorm. Firemen tapped the Mispillion River for water. Milford's new aerial ladder truck was in constant use.

**H.H.S. CAGERS**

(Continued from page one)

scoring title it will probably be another first for the local school.

Coach Jeffers states that Temple is the best scorer he has taught in eight years of coaching in Ohio and Delaware. The Lion mentor praised the unselfish efforts of Ron Collison, Bruce Smith, George Pfeiffer, Walt Lekites and Bob Gillette, who sacrificed opportunities for personal glory to assist a teammate to a successful conclusion of his basketball career. This attitude will undoubtedly help them become better boys and better men. This writer concurs.

HARRINGTON	G	F	P
Pfeiffer	0	0	0
Collison	2	4	8
Lekites	2	1	5
Smith	6	4	16
Temple	14	1	29
Konsey	1	0	2
McDonald	0	0	0
Balderson	0	0	0
Hoffman	0	0	0
Totals	25	10	60

REHOBOTH	G	F	P
Bailey	15	3	33
Stant	0	0	0
Lingo	0	0	0
Futcher	12	2	26
Hudson	0	0	0
W. Moore	5	7	17
Cottingham	7	4	18
Simpler	1	0	2
B. Moore	5	0	10
Flatt	1	0	2
Totals	46	16	103

H.H.S. 17 12 LWY  
H.H.S. 17-12-18-13-60  
Rehoboth 17-30-29-32-108

**Asbury Methodist Church News**

The second Sunday in Lent: Early Morning Worship 9 o'clock. The first morning worship service will feature the singing of the Crusader Choir. "The Good Shepherd" will be the theme of the pastor's sermon at this first service. Since the choir at this service are made up of Junior and Intermediates, the sermon etc. will be geared to their level. Members of the choir will participate in the service by acting as ushers, acolytes, reading the Scripture and leading in the Responsive Reading.

Church School 10 o'clock, Howard S. Wagner is the superintendent. We have a class for every age and interest group. You and your whole family will find a warm welcome in our Church School. If you are new in Harrington, or have no church home, we welcome you along with all our regular members.

Morning Worship (second service) 11 o'clock. Will feature the singing of the Wesley College Chorus and Choir. "Do You Believe in the Son of God?" will be the theme of the pastor's sermon. Altar Flowers will be by Mrs. Smith Carson in memory of her father. The friendly greeters will be Mrs. George W. Hanson and Mrs. Charles Rapp. A nursery is conducted during the 11 o'clock service for the convenience of those parents who have pre-school children and wish to leave them under good supervision.

The Intermediate MYF will meet at 6 o'clock. The Senior MYF will meet at 6:30 o'clock. The evening service will be at 7:30 and will be the second in the series of joint services between Trinity and Asbury Churches, and will feature the singing of your favorite hymns and the Chancel Choir. The Chancel Choir will sing the following anthems: "I Found Him In My Heart" and "Carry Your Burdens." In addition Miss Bonnie Lee Dickerson will sing the solo, "There is a Green Hill" by Gounod. The sermon, "The Cross and Apathy,"

will be by the Rev. Nelson Benjamin, pastor of Trinity Methodist Church. Last Sunday night we had a wonderful turnout despite the bad weather, and we are expecting several times as many this Sunday night. Come, bring your friends and neighbors.

The Official Board and the Commission on Education will both meet following the evening service.

The Choir Mother's Auxiliary and the Cherub Mother's Auxiliary have both been cancelled for this month.

The Choirs will rehearse Thursday and Friday as follows: Thursday, Chapel and Crusaders 3:30; Chancel 6:30; Cathedral 7:30, and Friday, at 3:30 the Cherubs will rehearse.

**Births**

**BEEBE HOSPITAL, LEWES**

**March 2**  
Mr. and Mrs. Mickey Cauthen, of Lewes, a girl, Debra Lyn.

Mr. and Mrs. John Forrest Evans, of Ocean View, a boy, Michael Forrest.

**March 3**  
Mr. and Mrs. Curtis Harper, of Millsboro, a boy, Curtis Edwin, Jr.

Mr. and Mrs. Melvin Rogers of Rehoboth, a boy, Melvin Otis, Jr.

**March 4**  
Mr. and Mrs. Frederick Vogt of Lewes, a girl, Frances Ann.

**March 5**  
Mr. and Mrs. Richard Andrews, of Georgetown, a boy, Gregory Wayne.

**March 6**  
Mr. and Mrs. George Howard of Rehoboth, a girl, Kathleen Marie.

**Milford Memorial Hospital**

**March 2**  
Mr. and Mrs. George Williams, Bridgeville, girl.

**March 3**  
Mr. and Mrs. James Hamilton, Selbyville, boy

Mr. and Mrs. Charles Clendaniel, Lincoln, girl

Mr. and Mrs. Robert Warnick, Milford, boy

**March 4**  
Mr. and Mrs. Robert Lineberry, Milford, boy

Mr. and Mrs. Daniel Streckler, Georgetown, girl

**March 5**  
Mr. and Mrs. William Grunden, Milford, boy

Mr. and Mrs. Marl Hayes, Greenwood, girl

Mr. and Mrs. Jessie Sharp, Milton, girl

**March 6**  
Mr. and Mrs. William Finkbinder Jr., Greenwood, boy.

Mr. and Mrs. Garfield Collins, Federalsburg, boy

Mr. and Mrs. Harry Davis, Bridgeville, boy

**March 7**  
Mr. and Mrs. Harold Roberts, Lincoln, girl

Mr. and Mrs. Charles Whaley, Georgetown, girl

Mr. and Mrs. Vincent Hudson, Millsboro, girl

Mr. and Mrs. Joseph Willing, Federalsburg, boy

Mr. and Mrs. James C. Watkins, Houston, boy

**March 8**  
Mr. and Mrs. Donald M. Carrier Jr., Georgetown, boy.

Mr. and Mrs. Ronald Parson, Seaford, boy

Mr. and Mrs. Joseph Henry Gray Sr., Dagsboro, girl.

**Of Local Interest**

The Senior Class will hold a bake sale, March 12, at 9 a.m. in front of Cahall's Used Furniture Store.

The Harrington Sunshine 4-H Club will meet Monday evening, March 14 at the home of David and Jean Martin.

Mrs. Robert Ricker and daughter, Kathy, have returned home after a visit with her parents in Chicago.

Mr. and Mrs. Calvin Wells entertained friends at dinner and bridge Saturday evening.

Miss Joyce Downing of Wesley College spent the weekend with her parents, Mr. and Mrs. Fulton Downing.

Mr. and Mrs. W. R. Massey entertained Mr. and Mrs. Burton Carter of Greenwood, Monday evening.

Mrs. Ida Mae Ross is on the sick list.

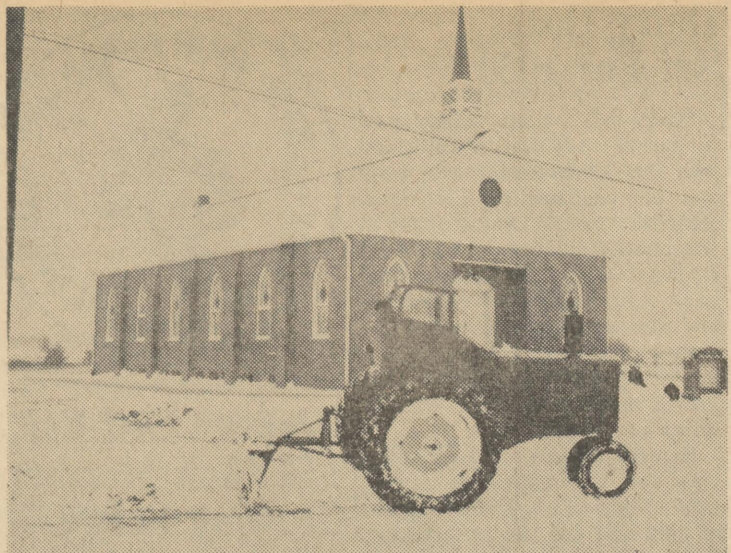
**Property Transfers**

R.E.C. Inc., a corporation of the State of Delaware to Richards J. Sipple, Frederica, on north side of David St. adj. lands of Hudson & Methodist Parsonage. \$1.

Wm. G. Jerread, Harrington, to John M. Curtis, Harrington, lying on west side county rd. to Laws Church. \$10 stamps 55 cts.

Clayton M. Layton, Mispillion Hund. to Earl R. McCall, Camden, Mispillion Hund., adj. lands of heirs of Ernest Hopkins, Leon Donovan & Draper heirs. \$700 stamps \$1.10.

James E. Roynce, Newark, to Chas. H. Gruwell, Felton, west side of concrete hwy. leading from Harrington to Farmington



Walt Messick removing snow from parking lot of Pilgrim Holiness Church on Delaware Avenue.

adj. lands of Workman & Hood. \$1750 stamps \$2.20.

Roland H. Goode, Mispillion Hund. to Chas. H. Gruwell, Felton, 3 parcels of land, 2 miles south of Harrington, lands formerly of Hearn & Simpson. \$10,900 stamps \$12.10.

Isaac W. Fleming, Smyrna to James W. Davis, Smyrna, adj. West Commerce & High Streets and lands of Stokesbury heirs. \$9,000 stamps \$9.90.

George E. Luff, Maryland, to James H. Spence, Smyrna, 5 lots on plot of Truax. \$1500 stamps \$1.65.

Glenn A. Richter, Dover, to Laurence DeMarie, Dover, 2 lots, Edgellie Acres. \$19,500 stamps \$22.

Townsend Tomlinson, Dover, to James Willer, Milford, W. Dover Hund. lying on east side of hwy. leading from Pearson's Cor. to Dinah's Cor. \$6,500.

John H. Brown, Dover to the State of Delaware, 3 parcels of land in E. Dover Hund. adj. Lockerman St. and other lands of

grantors and adj. John Brown on S. Little Creek Rd. \$9,443.44.

Raymond Lord, Dover, to Wm. H. Ellis, Dover, east side of Gov. Ave. adj. Jung & Esso Sta. \$7,000 stamps \$7.70.

Bedford Homes, Inc. a corp of State of Delaware to Eugene R. Hoffstadt, N. Murderkill Hund. 1 lot Briar Park. \$10 stamps \$15.40.

James H. Spence, Smyrna, to Stella Coppock, Smyrna, south side of Frazier St. \$7,500 stamps \$8.20.

Oliver Pryor, Clayton to Wm. H. Draper Jr., Dover, 2 lots on east side of Clayton Ave. \$1 and other consid.

Capitol Homes, Inc. Dover to Austin P. Hufnal, Dover, 1 lot in Sherwood of Dover. \$10 stamps \$19.25.

Gustav Korschak, Kent County to Woodbrook Realty Company, Morris Estates, Wyoming Avenue Sub-div. \$2,500 stamps \$2.75.

John Edward Morris, Lebanon, to Harry Wessel, Wyoming, leading from Lebanon to Rising Sun adj. lands of Pickering and Shep-

herd. \$4500 stamps \$4.95.

Paul Abraham, Wyoming, to Carlton Fifer, Wyoming, leading from Wyoming to Allaband Mill. \$10,000 stamps \$11.

Granville Hill, Harrington, to Geneva Humes, Pa., in Harrington Manor, 2 lots. \$1 and other consid.

Siegfried J. Nilson also known as S. John Nilson, N. Y., to Harold W. Redden, Mispillion Hund. adj. lands of Potter, Anthony and Masten, Marsh Hope Ditch and others. \$30,000 stamps \$33.

Jonah H. Havig, N. Y., to State of Delaware, for the Use of the Board of Game and Fish Commissioners, plot of Edward H. Richardson Associates. \$35,000 stamps \$38.50.

George B. Carroll, Dover, to Myrtle Kinney Bedwell, Dover, 2 lots, John W. Ingram. \$1.

Floyd Jester, Dover, to John M. Thompson, Dover, 1 lot in Dover Heights. \$250 stamps .55 cts.

Charles Reavis, S. Murderkill Hund. to Orville Travers, Alexander, Va., S. Murderkill Hund. adj. lands John Hurd and lands of others. \$1.

William M. Shockley, etal, Harrington to the City of Harrington, 2 parcels of land, leading from Morgan's to Masten's School House adj. lands of Kemp and Slater. \$1 stamps \$1.10.

Joseph P. Moore, Dover to Richard D. Johnson, Dover in E. Dover Hund. adj. Leipsic and Little Cr. rd. and other lands of the grantor's \$1.

Myrtle K. Biddle, Dover to Merrill C. Trader, Dover, lying on east side of rd. leading from Dover to Smyrna adj. Meyer and Sipple. \$1

Elheurah J. Allee, Dover, to James D. Keys, Bowers, 1 lot in Subdiv. of James F. Allee Jr. \$365.25 stamps .55 cts.

shop and Swap-In the Want Ads

WHERE EVERYBODY GOES FOR ENTERTAINMENT  
**REESE**  
MOVIE CENTER  
DELAWARE THEATRE-HARRINGTON

Another Bevy of Hits  
THURS., FRI., SAT.,  
MARCH 10-11-12  
1. GIANT CARTOON CIRCUS  
2.

CURT JURGENS - DAWN ADDAMS  
THE HOUSE OF INTRIGUE  
TECHNICOLOR  
AN ALIED ARTISTS PICTURE

3. Steve Brodie - Lyn Thomas in  
"HERE COME THE JETS"  
SUN., MON., TUES.,  
MARCH 13-14-15  
3 Shows SUN. 2:30-7:15-9:15

SAL MINED - SUSAN KOHNER - JAMES DARREN  
THE GENE KRUPA STORY  
A COLUMBIA PICTURES RELEASE

CLOSED WEDNESDAY  
THURS., FRI., SAT.,  
MARCH 17-18-19  
1. FORGOTTEN WORLDS OF ADVENTURE  
METRO GOLDWYN-MAYER  
2. James Stewart - Audie Murphy  
in  
"NIGHT PASSAGE"

YOU'LL MEET YOUR FRIENDS AT MOVIE CENTER

**Join The Blood Bank Today!**  
PROTECT YOUR FAMILY FOR ONLY \$2.00  
Pay \$2.00 the First Year & \$1.00 each Year Thereafter  
MAIL THIS APPLICATION WITH \$2.00 TODAY  
BLOOD BANK OF DELAWARE  
1015 WASHINGTON ST., WILM., DEL.  
Name \_\_\_\_\_  
Street \_\_\_\_\_  
Postal Zone \_\_\_\_\_ City \_\_\_\_\_  
Benefits effective 30 days after application is received.

**Our Bata Store Destroyed by Fire**  
We Have Moved to Temporary Location  
at 22 Walnut Street  
**GIGANTIC SALE**  
(During Rebuilding of Our Other Store)  
**2 WEEKS Starting**  
**FRIDAY, MARCH 11 - 9 A. M.**  
All Shoes on Open Display  
Self Service -:- Outstanding Values  
**\$1 - \$2 - \$3 - \$4**  
We will remodel our store destroyed by fire - Be patient and bear with us until then.  
**Bata** Milford Del.