

## TERRY NAMES PRICE HEAD OF HIGHWAY COMMISSION

Charles L. Terry Jr. Monday appointed former State Senator Henry T. Price of Smyrna, as chairman of the State Highway Commission.

Price's name was sent to the Senate and referred to the executive committee, as Senate confirmation is required.

Before naming Price, Terry conferred with senators of both parties about the appointment and, according to some sources, reception to his nomination was good.

Price, if confirmed, will succeed N. Maxson Terry of Dover, brother of the governor.

Sen. James D. McGinnis, D-Dover, chairman of the Executive Committee, said Monday he will make it a policy not to call appointments to a vote for at least 24 hours after they are sent to the Senate.

Price would serve at the pleasure of the governor.

It is not necessary for N. Maxson Terry to resign, as his term would end with Price's confirmation. The nominee, a native Delawarean who has lived in Smyrna all his life, is part owner of the Boulevard Electric Sales and Service with stores in Dover and Smyrna. He is 55, married and has two children. He graduated from Georgia Tech in 1933 with a bachelor of science degree in electrical engineering.

Price is a longtime member and lay leader of Asbury Methodist Church in Smyrna.

Last week, outgoing Gov. Elbert N. Carvel appointed him to the State Board of Housing. Price said Monday he is unsure whether this would present any conflict.

Price said that if confirmed to the road post, he will try to provide a continuation of "honesty and integrity" in the department. He praised the other commission members and the staff personnel of the highway department.

## Walk-In Clinic For Mental Help Studied

Emotional crises—like babies—seldom come at a time most convenient to the doctor.

For that reason, an Emergency Treatment Service has been proposed by the Board of Trustees of the Department of Mental Health, upon recommendation of the Commissioner, Dr. Daniel Lieberman.

In the immediate future, according to Lieberman, a treatment program to provide services for people suffering acute distress, will be in operation emanating from the Delaware State Hospital.

Essentially two basic features. For one, a 24-hour, around-the-clock walk-in clinic, whereby an individual suddenly engulfed, for example, by feelings of suicide, depression or despair—perhaps aggressive feelings of homicide—can seek, and find, immediate help.

For the other, a home treatment program, whereby a psychiatric team, composed of a psychiatrist, a nurse and a social worker, would be on call to respond to crisis of distress—in the home environment.

What is involved, essentially is a treatment program designed to respond to the requests of people who either feel themselves to be, or are, acutely disturbed. In many cases, the crisis is averted simply by a single visit. Further therapy may be indicated, but at least the immediate sense of panic, helplessness, or anguish has been alleviated.

In both treatment programs—the walk-in service and the home treatment—the emergency aspect is of prime consideration. After initial contact, if further treatment or assistance is required, arrangements are made for him to be seen by the appropriate individual agency of facility.

This may mean hospitalization, primarily because the person is dangerous to himself or to others; it may mean one of the somatic therapies, either an anti-depressant drug or a tranquilizer; it may mean out-patient treatment at one of the Mental Hygiene Clinics, or day-long treatment at the Day Hospital at Delaware State Hospital, which will be established in June. In some cases referral will be made to the family physician or minister with necessary consultative assistance offered by the State. Any number of treatment techniques may be indicated, including interviews with a social worker and follow-up visits by a nurse.

A few such emergency psychiatric (Continued on Page 8)



Mrs. Emily H. Womach

## DPI Fund Drive Chairman Named

Delmarva's best-known woman banker, Emily H. Womach, of Laurel, is chairman of the Delmarva Poultry Industry Association fund drive for 1965. The drive opens March 2.

Her appointment was announced by William R. Murray, of Frankford, president of the Pennsylvania poultry association.

Mrs. Womach, assistant vice-president and secretary of the Sussex Trust Company at Laurel, is a member of the Delaware State Bank Advisory Board, the first woman to be appointed to this board by a Governor of Delaware. She is also a former president (1963-64) of the National Association of Bank-Women, a member and former chairman of the Public Relations Committee of the Delaware Bankers Association, a past president of the Sussex Chapter of the American Institute of Banking, and presently serves on one of the committees of the American Bankers Association.

Long active in Delmarva's poultry industry affairs, Mrs. Womach is a director of the Delmarva Poultry Industry association and has served as vice-chairman of the Miss Delmarva Pageant, among other posts. She also is the author of a pamphlet, "Bank Financing of the Broiler Industry in Sussex County - A Survey in Depth" which has been quoted widely in many of the nation's financial papers.

Active in many community projects in addition to her banking and poultry industry interests, Mrs. Womach was educated in Laurel and Salisbury, Md., schools and is a graduate of the School of Financial Public Relations at Northwestern University. She and her husband, William S. Womach, live on a farm near Laurel where they raise registered Aberdeen Angus cattle. They have one son, Richard, a junior at the University of Delaware.

## Felton Bank Stockholders Meet

The annual meeting of the stockholders of the Felton Bank was held in the banking house Tuesday afternoon, Jan. 19.

The yearly report as presented to the stockholders showed that the steady growth of assets and liabilities of the bank that prevailed in recent years was continued during 1964.

The stockholders were also informed that the rate of interest to be paid on savings accounts had been increased to 3 1/2 percent annum, effective as of January 1, 1965.

Directors re-elected for the ensuing year were Lawrence E. Cain, Nelson M. Hammond, R. Edmund Harrington, Paul B. Hughes, Virgil N. Jarrell, J. Marion McGinnis, W. B. Pardee and W. Russell Torbert.

Officers re-elected were: President, Nelson M. Hammond; vice president, Lawrence E. Cain; secretary, J. Marion McGinnis; treasurer, R. Edmund Harrington; cashier, Louise O. Biddle; assistant cashier, Violet M. Bringhurst, and teller, Freda W. Kelley.

## Future Nurses Hear Speaker From Hospital

Mrs. Doris Williams, instructor, and Miss Bishop, a student nurse at the Milford Memorial Hospital, were speakers at the meeting of the Future Nurses Club, Harrington School, Jan. 20.

## Horse Program To Include Noted Trainer

An expanding interest in horses throughout this area has prompted the University of Delaware to expand its light horse program at Farm and Home Week. The annual event will be held on the University campus in Newark, February 9, 10 and 11.

The light horse program, which will be held on Feb. 11, will feature Monte Foreman, a noted equine artist, author and trainer. The sessions start at 10 a.m. in the Student Center with Foreman discussing "Those Cantankerous Leads". At 1:15 he will outline procedures for improving horse behavior.

A special evening session at 7 p.m. in Carpenter Field House will include practical demonstrations in training riding horses.

Foreman has spent most of his life working with horses in Texas, New Mexico and Arizona. He has trained many outstanding horses including War Paint, Chief of Four Mile, Sun Spot Revel and Poco Llano.

He spent ten years in the U.S. Cavalry before and during World War II, and has worked with race horses, jumping horses and polo ponies. He attended Auburn University in Alabama on a polo scholarship—one of few such awards ever given in this country.

Following World War II Foreman returned to "cattle country" where he spent nine years and several thousand dollars developing the "Balanced Ride" saddle—a western saddle designed to enable the rider to get maximum performance from his mount.

He is the author of "Horse Handling Science" and "Those Cantankerous Leads". He is also preparing a series of articles "Riding by Reasoning" which will be published in book form. All light horse sessions are open to the public without charge. This is the sixth year that special light horse program has been offered as part of Farm and Home Week.

Other Farm and Home Week sessions will cover farm business management, Delmarva's hatching egg business, fruit and vegetable production, wildlands management, dairy production, home gardening, community beautification, 4-H leadership and crop irrigation.

A special program of interest to women titled "Take a Look At Yourself" will include information on improving health, appearance and attitude.

## U. S. Army Nurse Corps, 1901-1965

In the span of 64 years thousands of professional nurses have served with distinction and pride in the Army Nurse Corps. As representatives of professional nursing at home and abroad, they are forever enshrined in the hearts of the American serviceman and his family.

Today, as yesterday, in their around-the-clock vigil, Army nurses give direct patient care to the sick and injured, and teach prevention and recovery measures in hospitals and in the ever-expanding Army Health Nursing Program on military posts in the United States and overseas. They participate in people-to-people programs, sharing life-saving knowledge with those less privileged people in underdeveloped nations, assist on mercy missions, serve as consultants and advisors on nursing activities, and work on medical research projects around the world.

In this developmental decade the opportunities for professional growth in the clinical specialties open broad horizons for the Army nurse. Continuous learning and teaching have become a way of life for these nurse officers. They gain and share knowledge with their civilian counterparts in the clinical laboratories; on the college campus; and in the Army's classrooms where the various aspects of management and hospital administration are pursued.

Since 1956, the Army Student Nurse Program has financially assisted worthy young people to complete their nursing education in both degree and diploma programs, on their nursing education in both degree and diploma programs, on their agreement to serve specified periods in the Army Nurse Corps.

In 1964, a four year program which provides financial assistance was approved to enable 135 outstanding high school graduates annually to enter college and complete a basic program in nursing education.

These Army sponsored educational programs help to inter- (Continued on Page 8)

## HATFIELD SEES BIG JOB, LITTLE TIME

Luther P. Hatfield has been elected to his first term as Harrington's Mayor, but says he isn't "figuring on a second term because I plan to step on some toes."

"I'm going in with the idea of serving one term," he said Wednesday. "There's a few things I want to accomplish, and the ones that asked me to run know I'm not afraid to stick my neck out."

Hatfield has set up an ambitious program centering around four main projects—a referendum to improve city sewer facilities, an entirely new city charter, a boundary survey which ties in with newly formed planning commission work and either a new city hall or more space in the present one.

"There's nothing startling about Harrington's growth compared with surrounding areas," he commented. "We're in good shape as a residential area, with new schools and lots of churches, but in poor shape as an industrial area."

He's already talked to Delaware Industrial Building Commission Chairman Robert H. Reed about possible inducements for industry locating in Harrington.

## Univ. Endowment Fund Established

After 50 years of tireless personal effort on behalf of Delaware's correctional services, Mrs. E. Paul duPont of Montchanin has established a University of Delaware endowment fund for the continuation of this work.

The E. Paul du Pont Endowment fund, which eventually will total more than \$300,000, is designed to encourage undergraduate and graduate students in the study of crime, delinquency and corrections. Other goals are to provide additional training for correctional workers at state agencies, and to encourage careers in social welfare work.

Objectives of the endowment are to provide training programs for personnel engaged in corrections work through in-service courses, seminars and workshops which will emphasize the clinical aspects of corrections. It is hoped that interships and field study programs will be established in Delaware correctional agencies for university students. In addition to assisting those already engaged in corrections work, the university will encourage undergraduates, graduate students and other persons to prepare for professional careers or to advance their knowledge of criminology, delinquency, corrections and social welfare.

President John A. Perkins said, "Mrs. du Pont has presented the University of Delaware with a challenging opportunity to advance the work she has so diligently pursued for more than 50 years. The university is grateful for the confidence she has shown and for the support which will enable us to extend our educational services to this important area of statewide concern." Courses, seminars, workshops and lectures will be arranged through the cooperative efforts of the university's department of sociology and the Divisions of Urban Affairs and University Extension. Advice will be sought from the various State agencies and organizations working in the fields of crime prevention, delinquency and corrections.

Dr. G. Bruce Dearing, dean of the School of Arts and Science at the university, said the first objective will be to establish short courses and conferences to upgrade the training of personnel employed at correctional institutions in Delaware. The first of these courses may be held this summer. Other possibilities are non-credit extension courses in corrections and applied sociology.

Programs to be supported by the endowment fund include lectures by distinguished visiting speakers who will appear at the university and at the state's correctional institutions. Mrs. du Pont described her interest in corrections several years ago with the remark, "I just can't get away from prisons."

Both her parents were active in the Prison Society in Pennsylvania and her grandfather was editor of a magazine devoted to prison reform. An aunt and other relatives were pioneers in movements to make prisons more humane and replace punishment with intelligent rehabilitation.

Following this family tradition, Mrs. du Pont has spent a half-century working to improve correctional conditions in the state. (Continued on Page 8)

## Student-Adult Conference Set For February 1

A Wilmington psychologist and a Seaford physician have been selected as the featured speakers for the student-adult conference on smoking and health at 8:15 p.m., Mon., Feb. 1, in the Georgetown High School auditorium.

Adults and teenagers throughout Sussex County are invited to attend.

Named as speakers for the program are Dr. Irwin G. Weintraub, clinical psychologist of Wilmington, and Dr. John C. Rawlins, Seaford physician.

Dr. Weintraub will discuss "Why We Smoke" while Dr. Rawlins will review "What Happens When We Smoke."

The program is being organized by a seven-member Sussex County 4-H Club Committee under the direction of County Agent William Pinnell. Serving as co-sponsors are the Georgetown P.T.A., Delaware Heart Association, Delaware Division of the American Cancer Society, and the Delaware Tuberculosis and Health Society.

The 4-H Club committee consists of Dorothy Hopkins, Lewes High School, chairman; David Lloyd, Georgetown, vice chairman; Judy Layton and Judy Davidson, both of Georgetown High School; David Richards, Lord Baltimore High School, and Brenda Millman and Susan Stuehlik, both of Milton High School.

The program will be opened at 8:15 p.m. with remarks by Miss Hopkins. After the discussions by Dr. Weintraub and Dr. Rawlins, the movie "Smoking and You" will be shown. Then the audience will be invited to participate in a question and answer session. Miss Hopkins will close the meeting with a summation of the discussions.

## Nursing Director Named For Del. State Hospital

As part of the overall reorganization of Delaware State Hospital into two psychiatric treatment areas, Dr. Virginia J. Harris, director of nursing, announced the appointment of Mrs. Jane Mitchell as assistant director of nursing of Area N. 2. A similar appointment will be made for Area N. 1 as soon as a suitable candidate is found.

An outgrowth of such appointments, according to Dr. Harris, will be tighter controls on nursing service, thus providing more quality patient care. "Mr. Mitchell, by being closer to the clinical area," said Dr. Harris, "will be in a position to see the patient's specific as well as general needs. She will be reachable. Patients and staff alike will know there is someone with authority in the immediate clinical area to whom they can go."

Mrs. Mitchell will directly supervise ten graduate nurses and twelve licensed practical nurses. One of the major goals is to train graduate nurses to work directly with patients in patient therapy and thus better utilize the nursing staff.

Before her promotion, Mrs. Mitchell was nursing supervisor of Springer Building, a position she has held since July, 1963. Previous to that, she was head nurse at the Governor Bacon Health Center, where she worked from 1948 to 1963. By taking extension courses and also studying a year full-time at the University of Delaware, Mrs. Mitchell graduated with her Bachelor of Science degree in 1963. She received her nursing training at Provident Hospital in Baltimore.

Married, with one son, she lives in Delaware City, where her husband is a teacher of emotionally disturbed children at the Governor Bacon Health Center.

## Of Local Interest

Harold Lee Ellwanger Jr., son of Mr. and Mrs. Harold L. Ellwanger, 103 E. Liberty St., participated in the inaugural parade for President Lyndon B. Johnson in Washington, D. C., Wed., Jan. 20. He is a cadet in the U. S. Merchants Marine Academy, Kings Point, N. Y. He visited his parents over the weekend.

## Local Boys To Sing In Buffalo

When the all-eastern division high school chorus sings in Buffalo, N. Y., during the biennial convention of the Eastern Division of the Music Educators National Conference February 5 to 8, two Harrington High School boys will be singing with it—Marshall Hatfield, tenor, and Ronald Hughes, bass.

This all-eastern division high school chorus of approximately 325 voices was selected by audition from high school choruses in Connecticut, Delaware, Maine, Maryland, Massachusetts, New Hampshire, New Jersey, New York, Pennsylvania, Rhode Island and Vermont. They will be in rehearsal for three days and appear in concert Monday night, Feb. 8, in Kleinhans Music Hall in Buffalo before a general session of the convention.

The chorus will be directed by Wilbur W. Hollman, head of the Music Department of Cedar Crest College, Allentown, Pa. Mr. Hollman has received degrees at Illinois Wesleyan University and Union Theological Seminary School of Sacred Music in New York City, and has studied in Europe with Nadia Boulanger under a grant from the Ford Foundation. In the summer of 1962 he and his college choir toured nine European countries and sang in the International Eisteddfod Choral Festival at Llangollen, Wales.

Appearing on the same program in Buffalo will be an all-eastern division high school orchestra directed by Howard Barlow of TV fame, and band under the baton of Harry Begian of Detroit, Mich., where he is director of bands at Wayne University.

The boys from Harrington will leave Friday morning from Wilmington by train, and be accompanied by Mr. Brobst, local music instructor. They will be housed in Hotel Buffalo during their stay in that city with other members of the chorus, and return Tuesday. Mr. Brobst, incidentally, will be singing in an all-teachers chorus Sunday evening in Kleinhans Music Hall when more than 200 music educators will join with the Eastman Philharmonia Orchestra of the Eastman School of Music, University of Rochester, under its newly appointed director, Mr. Walter Hendl, in a rendition of the "German Requiem" by Johannes Brahms.

Marshall Hatfield is the son of Mr. and Mrs. Luther P. Hatfield, Mr. Hatfield being the newly elected mayor of Harrington. Ronnie Hughes is the son of Mr. and Mrs. Benjamin Hughes, operators of the local dairy. Expenses for the trip are being shared by the parents of the two boys and the Board of Education for the Harrington Special School District, Mr. Roland Hitchens, President, Mr. Albert Adams, Superintendent of Schools.

## Del. Veterans Question Closing of Wilmington Office

Delaware veterans questioned today that the Veterans Administration can save \$48,000 annually by closing the Wilmington Regional Office and moving it to Philadelphia.

They also are convinced that once the office were closed, it would only be the first step to completely eliminating service to First State veterans, despite promises that contact men will be kept on duty.

According to State Commanders William Melville, American Legion and Clement J. Nevin, Veterans of Foreign Wars of the U.S. the contemplated closing would lead to action similar to that in 1959 when the Loan Guarantee Office was closed and moved to Pennsylvania.

Promises were made at that time, the veteran leaders said, that a Loan Guarantee man would be made available for consultation to Delaware veterans, but they charge none has ever been seen in the regional office since that section was closed.

They also dispute the statement of Regional Manager Leonard Field who pointed out in a newspaper interview that ninety per cent of the Regional Office work load is carried on quite satisfactorily through correspondence.

Both veteran leaders—Melville and Nevin—say their service officers feel there is no substitute for personal contact. This became more difficult, they said as Mr. Field himself acknowledged, at the time, when contact offices in Dover and Georgetown were closed. According to Field's statement when they occurred, it was the move that increased the correspondence load to the VA regional office. From that point (Continued on Page 8)

## 5 KENT YOUTHS HELD IN SERIES OF THEFTS

### Break-even Point Close To Many Delaware Farmers

Delaware crop producers are faced with the paradox of actually farming themselves out of business. Competition from other regions, rising production costs, increased land values and taxes are making the job of profitable farming increasingly difficult. During the past decade 2,200 farm units in the state have gone out of production. Producers faced with prospects of working harder for less income decided it wasn't worth it and sold out. This has caused farms to increase in size.

In 1950 Delaware had 7,248 farms. By 1959 this figure had dropped to 5,208. The U. S. Department of Agriculture estimates this figure to be 4,900 farms this year. During this same period the average size farm increased from 114 acres in 1950 to 146 acres in 1959.

As this trend continues it will mean fewer farms that are larger, better equipped, better managed, and more competitive.

Delaware has several natural advantages that help its agriculture remain competitive. The high population concentration in the northeastern United States provides a ready made market with minimum transportation costs. In addition climate and terrain are ideal for crop production as well as dairy and livestock enterprises. But these advantages can quickly melt away in the face of stiff competition from the midwest and other large farming areas.

Dr. William H. Mitchell, extension agronomist at the University of Delaware says there's no substitute for high yields for those farmers who want to remain competitive. He points out that increased yield usually means production efficiency increases, unit costs drop and profits rise. Every farm has its own break-even point for each crop that is produced. A certain yield must be obtained just to pay the cost of growing the crop. The break-even point for corn in the state is about 50 bushels per acre, soybeans—20 bushels, corn silage—10 tons and alfalfa hay two tons. But as Mitchell points out the only way to make a profit is to produce yields greater than these break-even points. And right now Delaware's average production in its major crops is not too far ahead of the break-even point.

Delaware producers have made the big breakthrough with some crops. With others, they're still barely breaking even. Corn production has skyrocketed during the past decade. This is especially true of Delaware's competitors in the midwest. In 1954 the average Illinois corn field yielded 50 bushels per acre. In 1959 it was 67 bushels and in 1962 it was 82 bushels. This past year a new record of 85 bushels per acre was reached on more than eight million acres of Illinois corn land.

Today yields of one hundred bushels of corn per acre are old hat to many good farmers. Some are pushing for 150 bushels and even higher. In 15 or 20 years, yields of 200 bushels per acre may be as common as 100 bushel yields are today.

The soybean situation is a different story. The best any farmer has been able to produce in Delaware, even under the best circumstances, is little more than 50 bushels per acre. But the average is slightly more than 23 bushels and in 1964 it was 12 1/2 bushels. Researchers have not found the key to producing really high soybean yields. They are looking for ways to produce hybrid soybeans, and find answers to fertility problems. But in the meantime many farmers are producing yields of 10, 15 and 20 bushels per acre. In effect they are farming themselves out of business, according to Mitchell.

## Mrs. S. Nolan Smith

Mrs. Golda Adams Smith, 84, died Saturday night at the home of her son, Marvin E. Smith, in Farmington where she had been living the last few weeks.

Mrs. Smith, the widow of Samuel Nolan Smith, had been a lifelong resident of Harrington. She was a member of Prospect Methodist Church in nearby Vernon. Survivors include another son, Ernest M. of Harrington; a daughter, Mrs. Ward Meluney of Federalsburg, Md.; 10 grandchildren; 17 great-grandchildren, and 4 great-great-grandchildren. Services were held Tuesday afternoon at the J. Millard Cooper Funeral Home. Interment was at Wesley Cemetery, Burrsville. (Continued on Page 8)

State police have made five arrests in connection with a series of thefts in the Dover-Fredricka area and have jailed four of the youths.

The fifth, a juvenile, was released under \$200 bail after he pleaded guilty to a petty larceny charge before Family Court Judge W. Marion Stevenson. Sentence was reserved.

The five were linked by police to one or more of ten thefts committed from last September to Jan. 16.

Arrested were Frederick Ronald Dawson, 18, Felton; Donald Edward Peterson, 20, Harrington; Robert Marion Anderson, 19, Fredricka; Larry Bennett Biddle, 18, Felton, and the juvenile, 17, Dover.

Police said Anderson had a part in four burglaries, one petty larceny and also was charged with having a switch blade knife in his possession.

Peterson was linked with two cases of petty larceny and six burglaries, police said. Dawson allegedly had part in five burglaries and was involved in three petty larceny cases. Biddle was charged in only one of the burglaries cases.

Police listed the following disposition of the cases:

—All involved in the petty larcenies, except the juvenile, were fined \$50 and costs and committed to Kent County Correctional for 29 days in default on each charge.

## Farm Sales Up, Incomes Down In U. of D. Report

The average Delaware farmer is working more and enjoying it less if net income can be used as a fair measure of enjoyment. Figures just released by the department of agricultural economics at the University of Delaware reveal that gross income per farm increased almost \$2000 in 1963. (The last year when complete statistics were available), while net income per farm declined more than one thousand dollars.

The report, prepared by Dr. William Crosswhite, assistant professor of agricultural economics at the University, uses U. S. Department of Agriculture statistics to summarize the state's crop and livestock production in 1963 and to compare it with six previous years.

Gross income per farm for 1963 was \$24,173, an increase of \$1,868 over 1962 and the highest figure on record. On the other hand, net farm income amounted to \$4,325, a decline of \$1,071 from 1962 and the smallest amount since 1959, when the average farmer's net income was \$3,749.

Income from Delaware's expanding broiler industry was the major factor in lifting the state's total cash farm income to a record \$1,191,701,000—five per cent above the 1962 total. A decline of more than 1/2 million dollars in crop income was more than offset by an increase of more than six million dollars in income from broilers, turkeys and livestock. Government payments through various farm programs added an additional one per cent.

Farm production expenses totaled \$100 million. Feed accounted for 43 per cent of all production costs. The cost of hired labor, including fringe benefits, amounted to nine per cent, while taxes on farm property added another one per cent.

Total net farm income—the payment to the farm operator for his capital, labor and management—declined by \$6,000,000 to \$22,500,000 in 1963. Crosswhite believes this smaller income resulted from reduced yields, decreases in farm inventories of feed crops, and higher costs in 1963 compared to 1962. Production expenses required to produce \$100 in income in 1962 was \$76.16. This figure increased to \$79.55 in 1963.

Major increases in grain crop acres were limited to corn for grain and soybeans. Acreage of other feed crops declined while land producing alfalfa remained at the 1962 level.

The lower than average rain fall in 1963 did not reduce small grain yield according to Crosswhite. However, corn, soybean and hay yields were greatly affected. Yields of corn for grain declined by 13 per cent, soybeans by 26 per cent and hay by 27 per cent.

Land devoted to vegetable production increased by 2,670 acres. More acres were used to grow snap beans, green peas, asparagus and watermelons. The largest acreage reduction in vegetables occurred with lima beans, cucumber (Continued on Page 8)



Greenwood

Mrs. Jacob Hatfield
News from Greenwood Menonite Church bulletin: "The newest plan for prayer meeting has been adjusted to this: 1st Wednesday evening of each month, Conjoint; the other evenings will be planned for four age groups; Brother Mark S. will provide leadership for the children's group; Mark Yoder will be in charge of Intermediate group until sometime in March; youth is now MYF.

Hickman

Mrs. Isaac Noble
Worship services at 10 a.m. Union Methodist Church with the prelude, Mrs. Virginia Collier at the piano. Call to worship, the Rev. Bryan Blair. Sunday School 11 a.m., Russell Stevens, superintendent. The friendly greeters last Sunday were Mr. and Mrs. Ray Collison.

Hobbs

Mrs. L. H. Thomas
Mr. and Mrs. James McConnell, Miss Mary Katherine McConnell, and Miss Joy B. Griffin, visited Mrs. Wesley Stafford recently.

Andrewville

Mrs. Florence Walls
The Andrewville Speedies 4-H Club had their parent's banquet, Sat., Jan. 23, at the Farmington Fire House. The members that completed their records received their pins. Each one received a 4-H key chain for their work.

Houston

Mrs. Viola Thistlewood
Sunday School at 10 a.m., Robert H. Yerkes Sr., superintendent of adult school and Alvin O. Brown, superintendent of the junior department.

Burrsville

Mrs. Roland Draper Sr.
Wesley Sunday School at 10:00 and worship service at 11:00. Union worship service at 10:00. Sunday school at 11:00.

ner guests of Mr. and Mrs. David Ellwanger Sunday.
Miss Sandy Layton, of Denton, visited Miss Elizabeth Usilton, on Sunday.

BE WISE - ADVERTISE
SHOP AND SWAP
in the WANT ADS

McKnatt Funeral Home
YOUR PEACE OF MIND AND HEART IS OUR FIRST CONSIDERATION
50 Commerce Street Harrington, Del. 398-3228

TOTAL CAR SERVICE
GOT PROBLEMS? OVER ALCOHOL?
There is an Alcoholics Anonymous Meeting in HARRINGTON Each TUESDAY EVENING
FRY'S AMERICAN
398-3700

SALMON'S FURNITURE
ZENITH & PHILCO
3 MI. S. OF HAR.-U.S. 13 398-8857

DELAWARE'S OLDEST BANK
All deposits insured up to \$10,000 by the Federal Deposit Insurance Corporation

Densuprem Dairy Store
It's Hot Chocolate Time
10¢ CUP With Marshmallow
One FREE Hot Chocolate WITH THE PURCHASE OF ONE BANANA SPLIT
Clark St Harrington, Del.

5 DAYS IN MILFORD
Friday, Saturday, Feb. 5th & 6th
STORES OPEN BOTH NIGHTS TIL 9 P.M.
BARGAINS GALORE IN EVERY STORE

EVERYBODY WINS!
With Acme's Exciting, New SPOT O GOLD
WIN UP TO \$1000
CASH DIVIDEND CARDS
PLENTY OF BIG CASH PRIZES IN EVERY STORE!
ACME GUARANTEES EVERY CARD A WINNER
shop ACME MARKETS
GREEN STAMPS

SHOP AND SWAP IN THE WANT ADS

PROMPT TV SERVICE
DEL - MOR - TV CO.
Harrington-Milford Road 422-8534

KEEP IT WARM WITH Harrington Lumber & Supply Co.
PHONE 398-3242 HARRINGTON, DEL.
ATLANTIC HEATING OILS
Radio Dispatch Truck Service
WE GIVE GREEN STAMPS

Of Local Interest

Mrs. E. Farrell Jackson of Wilmington, was the guest of her mother, Mrs. Elizabeth T. Harrington, Wed., of last week.



Felton

Mrs. Walter H. Moore

Rev. Donald Washburn's Sunday morning message was "The Three Keys". The Senior Choir anthem was "In My Heart There Rings a Melody." Susie Bostick and Esther Dill sang the duet part of the Junior Choir anthem, "We Are Children of the King". The Sunday morning friendly greeters were Mr. and Mrs. Walter H. Moore.

The Woman's Society of Christian Service will have an anniversary program in the Fellowship Hall, Mon., Feb. 1 at 2:30 p.m. The program will be in charge of Mrs. Lynn Torbert. Mrs. James Cahall, the president, will preside at the meeting.

Mrs. Mark Van Pelt, of Seaford, spent Thursday with Mr. and Mrs. Joseph Crockett. Friday evening guests of Mr. and Mrs. E. Reed Hughes were Mrs. Clara Hughes, Mrs. James Conley Sr., of Frederica, and Mr. and Mrs. James Conley Jr. and children, Jay and Connie, of near Dover.

Mrs. Bess Hargadine visited her nephew, Preston Cannon, a patient in the Delaware Hospital, Saturday.

Mr. and Mrs. Charles Harrison visited relatives in Burlington, N. J. Saturday.

Mr. and Mrs. Dorsey Hammond, of Newark, spent the weekend with his parents, Mr. and Mrs. William D. Hammond.

Mrs. Russell Torbert, Mrs. Lynn Torbert and Mr. and Mrs. Walter H. Moore spent Tuesday in Wilmington. They called on Mrs. William Haines while there. John Kates and June Half, students at Union College, Barboursville, Ky., have returned to college after spending several days last week with his parents and sister, Mr. and Mrs. Thomas L. Kates and Peggy Kates.

Mr. and Mrs. Samuel Walters Sr. entertained at a family dinner Sunday. Those present were Mr. and Mrs. William Swain and daughter, Bobbi Ann, Mr. and Mrs. Robert Wood and daughter, Donna Kay, Mr. and Mrs. Walter W. Moore and son, David, and Miss Virginia Green, of Frederica.

Sunday dinner guests of Mr. and Mrs. Lynn Torbert were Mrs. Lillie Blades and Mr. and Mrs. J. W. Alcorn, of Wilmington, and son, Bob, with the U. S. Marines.

Mrs. Harold Orendorf, of Fairfax, Va., is spending this week with her parents, Mr. and Mrs. Ingwald Saboe. Mrs. Saboe is convalescing from an operation.

Mr. and Mrs. Richard Delong and daughter, Nanette had for their Sunday dinner guests, Mrs. Pearl Delong and Mr. and Mrs. John Stafford. The occasion was Mrs. Stafford's birthday.

Mr. and Mrs. Walter H. Moore were Sunday dinner guests of Mr. and Mrs. Clifton Chambers and son, Scott.

Peggy Kates, Barbara and Billy Brown went to Baltimore Sunday to visit Barbara's and Billy's mother, Mrs. Kathleen Brown, a patient in John Hopkins Hospital.

Mrs. William Moore is a patient in the Millford Memorial Hospital, Millford.

Wade Shaub spent two days last week in Wilmington with his daughter, Mrs. Howard T. Wood, Mr. Wood and son, Donald.

Thomas Steward, of Dagsboro, was a Sunday guest of Mr. and Mrs. Spencer Failing Jr.

Mr. and Mrs. Elwood Shultie and Mr. and Mrs. Elmer Baker, of Harrington, were Sunday visitors of Mr. and Mrs. Robert Shultie.

Mrs. W. B. Macklin has returned from a visit with her son and wife, Lt. and Mrs. Jack Macklin, at Camp LeJeune, N. C.

The Felton High School Alumni Association met for a business meeting Jan. 18. Miss Dorothy Heyd is president of the Association. April 24 is the date set for the banquet and dance. The annual scholarship fund drive will be held the month of February. Another business meeting will be held January 28.

Mr. and Mrs. Reuben M. Outten quietly celebrated their golden wedding anniversary at their home in Felton. They were married at the Epworth Church, Wilmington, by Rev. Murray Jan. 16, 1915. Mrs. Outten was the former Florence Kelley of near Felton. Mr. Outten is a retired block operator for the Pennsylvania Railroad.

4-H Club Notes

Recently the Harrington Sunshine 4-H Club met at the home of Judy Wyatt with Lynn Slayton as co-hostess. The meeting was called to order by Diane Jarrell, vice president. Dues were collected and business was discussed.

It was decided that the club would visit the Farmington club in March and also go to a food demonstration at the Delaware Power and Light building.

Our guest was Karen Brown, a Houston Club member, who gave a talk about her trip to Chicago. Judy Wyatt gave a demonstration for her health project.

The next meeting will be at Cheryl LeKites' home with Junita Garey as co-hostess.

Shop and Swap—in the Want Ads

Trinity Methodist Church Notes

Sunday: 10 a.m. Church school for all age groups. Lesson for adults: "Rejection or Acceptance" with Manlove Bradley, superintendent of school.

11 a.m. Worship service. Sermon by pastor: "How Can I Be Sure." Anthems by Senior and Junior Choirs. "Hosanna" by Gregor-Truster. Solo: "The Lord's Prayer", Mr. Al Mann.

We are happy to welcome the Harrington Volunteer Fire Company to worship with us this morning. We will honor those who have run the good race and are now with their heavenly father.

The Altar Flowers are presented to the glory of God and in loving memory of Frank C. O'Neal Sr. by Mrs. Frank C. O'Neal.

5:45 p.m. The Trinity Youth will unite with Asbury youth to make plans for the next sub-district meeting to be held in Trinity Church, Harrington, next Sunday evening at 7 p.m. The combined youth groups of Harrington will lead the worship service, provide refreshments and activities for the youth of the nine churches of our sub-district.

A film will be presented entitled: "Deeper Root" which directs thinking toward helping the local youth groups to more effective witnesses for Christ in their church and community. We will have election of officers at this meeting.

Monday: 7:30 p.m. Meeting of the Loyal Workers' Bible Class. 10:30 a.m. Dover District Ministerium meeting at the Methodist Church in Ellendale.

Tuesday: 7:30 p.m. Meeting of the Women's Society of Christian Service. Topic for meeting: "Spanish American Visitors Speak", leader, Mrs. Harriet O'Neal. The hostess is the Ruth Circle.

Wed. Bible study groups meeting in home: 7:30 p.m. Mr. and Mrs. John Walls, 78 Clark St. 7:30 p.m. Mr. and Mrs. William Shaw, Weiner Ave.

8 p.m. Mr. and Mrs. Randall Knox, Jr., 207 Center St. 8 p.m. Mr. and Mrs. C. Sharp Harrington, 108 Commerce St. 8 p.m. Mr. and Mrs. Richard Shultie, 15 Mispillion St.

8 p.m. Mr. and Mrs. Frank O'Neal, Jr., Harrington Manor. Thursday Bible study group meeting in the home of Mrs. Lewis Clymer at 100 Reese Ave. at 7:30 p.m.

6:30 p.m. Junior Choir rehearsal. 8 p.m. Senior Choir rehearsal. Friday: 9 p.m. Church league bowling in Millford.

Saturday: 8 p.m. Bible study group meeting in the home of Mr. and Mrs. Bailey Minner at 268 Del. Ave.

Each Bible study group will study the theme of "Assurance of Victory" this week. Each person is asked to bring their Bible to these meetings. These Bible study groups are open to anyone wishing to attend.

Mrs. Sadie Emory will be celebrating her 90th birthday this Wednesday. There will be open

Asbury Methodist Church Notes

The pastor will be back in his pulpit today and the subject of the sermon for the morning worship service will be "Man Alive", at which time the pastor will try to point out to each one of us that we do not live life at its fullest and at its best, but rather content ourselves in the secondary fields.

The church school will attend the worship service in a body today, and all teachers and officers should sit with their classes if possible.

The pastor will give, in addition to his sermon, a report on his trip to Buck Hill Falls where he is to learn of how peoples over this nation of ours can live the better life in a better world.

The evening service will come under the subject of "Going A Little Farther" in which the pastor hopes to point out to you that second-mile efforts are well worthwhile and a necessity to Christian perfection.

The regular meeting of the RA's (Royal Ambassadors) was held Jan. 13, 6:30 p.m. Wed., Jan. 13.

The meeting was opened with the song, "America". The purpose of the meeting was to discuss the role chaplains play in our Armed Forces.

The background for this study was taken from Joshua 6-1:16. A short history of the chaplaincy of the United States was given by Kerry Dale.

The story "Danger in Religion" Friendly greeters this week will be Mr. and Mrs. Thomas Peck.

The Official Board meets on Monday evening, Feb. 1, at 7:30 p.m. This is our pre-fourth quarterly conference meeting and all members are asked to be present.

The Woman's Society of Christian Service will meet on Tuesday evening, Feb. 2, at 7:30 p.m. The topic is "We Would See Jesus", Martha Circle, Mrs. Carl Hill. The leaders are Mrs. Oscar Dickerson and Mrs. Charles Rapp.

The Commission on Christian Social Concerns meets on Tuesday evening, Feb. 2, at 7:30 p.m. in the church office.

The Commission on Membership and Evangelism meets on Wednesday evening, Feb. 3, at 7:30 p.m. in the church office.

MARY CARTER PAINTS

Every Second Gallon Free Special Prices on Quarts Paint & Supplies For All Purposes

Mary Carter Paint Store 315 W. Lookerman Street Dover, Del.

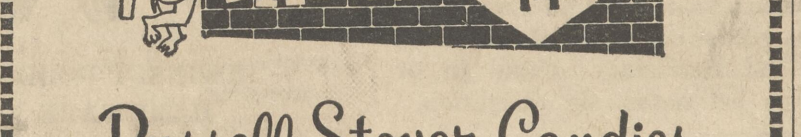
Collins & Stillman Furniture Co.

118 Broadkill Road MILTON NEW & USED — Also Custom Upholstering Truck Seat - Boat Canvas & Tops Rug Cleaning

Phone 684-4239

VALENTINE'S DAY IS FEBRUARY 14th

Russell Stover Candies THE FINEST . . . . THE FRESHEST



ASSORTED CHOCOLATES - 1 lb. \$1.60 - 2 lb. \$3.15

Clarke & McDaniel GIFT SHOP

25 Lookerman St. Dover, Del.

Baptist Church News

Sunday School, 9:45 a.m. Classes for everyone. Nursery provided. Alton King, Supt. Morning worship 11 a.m. Prelude, Mrs. Rosalie Quillen, organist. Number by choir. Message by pastor, William Halliburton.

Training Union 6:30 P. M. Classes for every age from beginners to adults. Max McIlvain director.

Evening worship 7:30 p.m. Song service, Mrs. Edith Hughes, pianist. Message by Pastor, William M. Halliburton.

Sunday School teachers and officers meeting at 8:30 p.m. Mon., Feb. 1, Church Council 7:30 p.m.

Tuesday, Feb. 2, Millford Chapel business meeting 7:30 p.m. Wednesday, Feb. 3, GA's 6:30 p.m.

Bible study and prayer service 7:30 p.m. Thursday, Feb. 4, Primary Sunbeams, 3:30 p.m. directly after school under the direction of Mrs. Viola Rogers assisted by Mrs. Amelia Pruet.

The regular meeting of the RA's (Royal Ambassadors) was held Jan. 13, 6:30 p.m. Wed., Jan. 13.

The meeting was opened with the song, "America". The purpose of the meeting was to discuss the role chaplains play in our Armed Forces.

The background for this study was taken from Joshua 6-1:16. A short history of the chaplaincy of the United States was given by Kerry Dale.

The story "Danger in Religion" TRAGEDY and COMEDY are the symbols of the theater. Many people treat life as a comedy with an "eat, drink and be merry" attitude. The tragedy is that many die failing to accept the free gift of eternal life.

"For God so loved the world, that he gave his only begotten Son, that whosoever believeth in him should not perish, but have everlasting life." John 3:16 HARRINGTON BAPTIST CHURCH, Fleming Street

SPECIAL REVLON LIPSTICK and NAIL POLISH

BOTH ONLY 85¢ COMPLETE SET — SIX SHADES — \$5.00

CLENDENING'S 13 Commerce St. and Quillen Shopping Center

Sales - REAL ESTATE - Service

ARNOLD B. GILSTAD HARRINGTON, DEL.

RANDALL H. KNOX, SR. Sales Associate Telephone: Office 398-3551 Res. 398-8402

ERNEST RAUGHLEY INSURANCE AGENCY

Complete Service For Your Insurance Needs

Harrington, Del. Phone 398-3551

St. Stephen's Episcopal Church Notes

Today, FRIDAY— 9 p.m. Participation in church bowling league. SUNDAY— 8 a.m. Holy Communion 9:30 a.m. Church School 11 a.m. Morning prayer, Litany and sermon. 12:15 p.m. Coffee hour. 6:30 p.m. Meeting - Episcopal Young churchmen.

MONDAY— 6:30 p.m. Meeting—Girl Scouts. 7:30 p.m. Meeting—Episcopal Church Women—in Lounge. TUESDAY— 7:30 p.m. Meeting — Sunday School Teachers. WEDNESDAY— 7:30 p.m. Healing Service using prayers for the Purification. Sunday afternoon, Feb. 14, at 4:30 p.m. the Kent County Convocation of the Episcopal Young Churchmen will meet here at St. Stephen's. Dinner will be served by the Episcopal Church Women at 4:30, after which there will be the general quarterly meeting of the Young Churchmen, followed by evening prayer in the church at approximately 6:30.

Of Local Interest

Mrs. William Hearn Phone 398-3727 The Harrington Home Economics Club will meet Mon., Feb. 1 at 1:30 o'clock in the fire hall. The new agent, Mrs. Eleanor Voshell, will be present. Her topic will be "The Golden Years". All members are urged to be present.

Miss Alice Hearn, Randy Knox, Lois Larrimore and Linda Smith, all students of the University of Delaware, spent the weekend with their respective parents. Most of the Harrington students who are attending the different colleges across the country are in their mid-year finals and will have a few days break beginning the middle of this week and will come home for a few days within the next two weeks.

Terri Kohel is sick with strep throat. Anita Jo Redden has the chicken pox. Mrs. Hewitt Smith entertained a few friends at a luncheon on Thursday.

Mr. and Mrs. George Cain entertained a few friends with a dinner followed by cards Saturday evening. Miss Susie Taylor celebrated her birthday with a party held

in the Century Club Saturday evening. The Tuesday evening bridge club met at at home of Mr. and Mrs. George Vapaa at Moore's Lake, near Dover.

Mrs. Harry Ford, of Philadelphia, is spending some time with Mr. and Mrs. R. Harry Quillen. Mr. and Mrs. Norman Oliver entertained a few friends at cards Saturday evening.

Mrs. Horace Quillen, with Mrs. T. Scott Purse, of Seaford, left Saturday to spend the next two months at Coral Gables, Fla. Mr. and Mrs. J. Millard Cooper entertained at dinner Sunday their parents, Mr. and Mrs. Howard Cooper. Also Mrs. L. R. Beauchamp in celebration of the 4th birthday of their daughter, Mary Ann.

Mr. and Mrs. Elbert Stevens, of Wilmington, spent the weekend with Mrs. W. R. Massey. Mr. and Mrs. William Gillette and daughter moved from Masten's Corner, to 204 Simmons St., Monday.

Sunday dinner guests of Mr. and Mrs. Norman Oliver were Mr. and Mrs. Rodney Hill and sons, Rodney and Rickie, of Dover, and Frank Wright.

The Rev. Quay Rice with several other Episcopal ministers, attended the 180th Diocesan Convention Monday and Tuesday. The Mrs. George Johnson, Mrs. Ernest Killen and Mrs. Thomas Clendening attended the Episcopal Church Women's Convention on Tuesday at the Immanuel Church, Highlands, Wilmington. Mrs. William Hearn was to attend but was ill at this time.

Mrs. Mary Dolby is at home recuperating following several days in the hospital.

Felton Church of God News

Sunday 10 a.m. Sunday School. Classes for all. 11 a.m. Morning worship, youth week. 11 a.m. Children's church. 7:30 p.m. No service at church. Special service with Clayton Church at Clayton. Wednesday, 7:30 prayer meeting. Friday, 7:30 young peoples service.

PROMPT TV Antenna Repairs Complete Stand Alone Towers SALES and SERVICE EARL BUTLER 398-3395

Webb's Ford & Mercury, Inc.

Milford, Del. Phone 422-8071

A Safe Place to Buy NEW and USED Cars and Trucks

Your LOCAL Ford & Mercury dealer, has on hand, at all time, at least 100 New & Used Cars to choose from. All financing done through - Low - Low - Bank Rates - We also have one of the best equipped Service Departments and Body Repair Shops on the Eastern Shore.

Specializing in Bear Front End Alignment with all New Equipment

Open Nightly until 9 P.M. Closed Sunday

Webb's Ford & Mercury Inc. Milford, Delaware

Harrington Seventh-day Adventist Church 57 E. Clark Street Harrington, Delaware EACH TUESDAY NIGHT BEGINNING FEBRUARY 2 At 8:00 P.M. Illustrated in color on the screen.

Berry Funeral Homes There are impressive Berry Services within the financial circumstances of every family. The refinement and fine character of our service is not measured by its cost. MILFORD 422-8091 FELTON 284-4548

Come, Reddy, dear let's chase away those chills! Reddy can keep you cozy with AN ELECTRIC BLANKET A PORTABLE ELECTRIC HEATER INFRARED LAMPS Electric House Heat AN ELECTRIC FREEZER—so you don't need to shop in bad weather AN ELECTRIC DRYER—so the wind and rain can't beat you while you hang out clothes HEATING CABLE—to keep pipes from freezing Be good to yourself. See an appliance dealer soon. Let our heating specialist tell you about converting your present heating system to Electric Heat. Delaware Power & Light Company INVESTOR-OWNED, BUSINESS-MANAGED



THE HARRINGTON JOURNAL

C. H. BURGESS and W. C. BURGESS Publishers
C. H. BURGESS Editor
W. C. BURGESS Associate Editor

Suscription Rates \$3.00 Per Year
Out of State \$3.50 Per Year

Office of Publication, 207 Commerce Street, Harrington, Delaware
Entered as second-class matter August 16, 1946, at the Post Office at Harrington, Delaware, under the Act of March 3, 1879.

A SECRETARY IS NEEDED

Since July, when Harold Carrow resigned, the Kent County Department of Elections has been without a secretary. It is time one was named.

Without a secretary, however, the office force, under the aegis of Mrs. Blanche Cahall, handled the primary and general elections with little more difficulty than usual.

When one considers the inauguration of the reappointment plan, with new boundaries for the voting districts, it is amazing the elections went as well as they did.

Running the elections for the first time, the office force handled its end well and, in case of doubt, Mrs. Cahall knew where to get helpful information.

It has been said appointment of a secretary was held up until after the elections because the "powers that be" wanted to see which way the wind was blowing.

But after the general elections, came the Democratic committee elections. Their outcome could have had a bearing on the selection of a secretary.

Now that the committee elections are over, the members of the Kent County Democratic Committee meet next month to elect a chairman, among other business.

County Chairman Vernon B. Derrickson will encounter some opposition, but he should win in a breeze.

There will be, no longer, any valid reason for holding up the appointment of secretary to the election board. Several names have been suggested for the post but that of Mrs. Cahall should be given full consideration.

Jimmy Dean attributed this statement to his Uncle Henry: "It used to be when a man held onto his money, he was called a miser; nowadays, he is called a miracle man."

Delaware Food Market Report

The storms and freezing weather of the past week have played havoc with many fruits and vegetables. In Florida, there are strong indications that strawberries may be just about ruined, there's ice in the heads of cabbage, and the potato crop has been badly hit.

There are still some budget buys at the various counters. There are big supplies of carrots, celery and kale. The quality of these vegetables is very good and prices are quite reasonable.

Changes in fruit prices are mostly up, also. Strawberries are high in price if you can find them. Oranges, tangerines, and lemons are all higher, but there is plenty of grapefruit.

Banana prices are rising and further supplies are uncertain due to conditions in the countries that send us this fruit.

Eggs continue to be a bargain, selling at prices way below those of this period last year.

Beef supplies remain large, thus making many cuts excellent buys since prices are so reasonable.

Young tender chicken continues to furnish its excellent protein at most reasonable prices.

BE WISE - ADVERTISE SHOP AND SWAP IN THE WANT ADS

Veterans News

QUESTIONS and ANSWERS

Q—A veteran dies and principal and contingent beneficiaries named in his NSLI policy are deceased. The proceeds of his NSLI policy are paid to the veteran's estate. Is the widow liable for income tax payment on this same money after she inherits it?

A—Yes. The money which the widow receives from the estate has lost its identity and would therefore be taxable.

Q—Upon my discharge from the Armed Forces, I received a lump sum disability severance payment. Will I have to pay this back to the Government if I am awarded VA compensation for the same disability?

A—The law requires that VA monthly compensation payments be withheld until the amount recovered is equal to the amount of disability severance pay you received.

Q—Where should I write in case of my VA benefit check is not delivered on time

A—Wait sufficiently to be sure that the mails have cleared then write to the VA Regional Office having your claim file. Always include your full name, if you are a veteran, or the deceased veteran's name if it is a death claim, and your claim number.

Q—Can a veteran once more buy GI insurance?

A—Yes. Certain veterans with service-connected disabilities or veterans with nonservice-connected disabilities who cannot buy commercial life insurance at any cost will become eligible to buy a form of National Service Life Insurance next May 1.

Q—How do I go about securing a guaranteed GI home loan?

A—Apply to the VA for a Certificate of Eligibility, and after selecting a home you wish to purchase, apply for the loan with the commercial lender of your choice.

A—Submit your request for an increase and present medical evidence to show that your service-connected disability is more disabling than at the time of your last examination for compensation.

BE WISE - ADVERTISE Shop and Swap—in the Want Ads

4-H News

With Marion McDonald
4-H Public speaking contest entries should be arriving in your 4-H office now. The contest will be held on Jan. 30.

Farm and Home week will soon be here. 4-H leaders are urged to get their luncheon reservations in for the 10th of February.

Borrowing from our New Castle 4-H Club Agent may I share you some thoughts. As our year is getting under way 4-H leaders as well as other youth leaders hear the yearly comments of our busy schedules.

The time you have available and the priority of the items for things which:

MUST be done — Homework, reading, etc.

SHOULD be done—Recreation, Hobby, Clubs

COULD be done — TV, Comic books, etc.
If you were to try and list everything you do and the many things you don't have time to do, you might find that many items are not in the must do or should do category.

For such a plan to be successful you must sincerely want to accomplish the goals you have set for yourself.

Happy-go-lucky folks never will plan, They take thinks each day the best they can.

Armed Forces Notes

Army Pvt. Antony J. Vican Jr., whose parents live at 809 S. E. Fourth St., Milford, completed an eight-week combat engineer course at Ft. Leonard Wood, Mo., Jan. 22.

The 20-year-old soldier entered the Army in September 1964 and completed basic combat training at Ft. Gordon, Ga.

He is a 1963 graduate of Milford High School.

Pvt. Douglas B. Moore, 18, son of Mr. and Mrs. Benjamin Moore Jr., 3 Brown St., Harrington, completed an eight-week food service course under the Reserve Enlistment program at the Army Armor Center, Ft. Knox, Ky., Jan. 22.

He is a 1964 graduate of Harrington High School.

Seaman Wilson E. Wallace, USN, son of Mr. and Mrs. Wilson Wallace, of Route 1, Greenwood, has reported for duty on the staff

of the Commander, Naval Activities with Headquarters at Rota, Spain.

Aviation Electrician's Mate Second Class Richard F. Dennis, USN, son of Raymond H. Dennis, Sr., of 327 Calvin Drive, Harrington, has received a Letter of Commendation from his Commanding Officer, Commander P. F. Hunter, III, while serving with Patrol Squadron 44, at the Naval Air Station, Patuxent River, Md. He received the letter in recognition of his contribution in helping his squadron achieve the highest award attainable in Maritime Air, the Captain Arnold Jay Isbell Trophy for Anti-Submarine Warfare Excellence.

Farmington

Mr. and Mrs. Emerson Langford visited his sister and husband, Mr. and Mrs. Joseph Isaacs, of Milford last week.

Mr. and Mrs. Edward Collins entertained Mr. and Mrs. McCabe, of Maryland, Sunday for dinner.

Lloyd Chism is in Chester Hospital, suffering from a heart attack.

Mrs. Paul Breeding spent the day with her daughter and family, Mrs. George Langford.

Marvin Smith and family have the sympathy of the community in the death of his mother.

Mrs. Minnie Satterfield is in the Milford Hospital. Mr. Bradley is also a patient.

Felton Avon Club Notes

Club members attended a reciprocity tea at the Dover New Century Club, January 20.

The club will meet in the Fire Hall, Feb. 3, at 2:30 p.m. for a program on health and safety. Miss Martha Godwin, chairman and her committee, Mrs. Charles Bostick Sr., Mrs. Harold Schabinger, Mrs. C. M. Simpler, Mrs. Harry Sipple, Mrs. Larry Legates and Mrs. James Conley will be in charge of the program and refreshments for the afternoon.

of the president, Mrs. Harold Schabinger, Feb. 10 at 10 a.m. for reports and a business meeting. All members are urged to attend this meeting.

Births

BEEBE HOSPITAL, LEWES

Jan. 18: Mr. and Mrs. Robert Clark, of Selbyville, a girl, Lisa Catherine.

Jan. 19: Mr. and Mrs. Walter Lee Smith, of Frankford, a boy, Walter Edward Lee, Jr.

Jan. 20: Mr. and Mrs. Thomas H. Jarvis, of Dagsboro, a girl, Katherine Marie.

Mr. and Mrs. William Tunis, of Georgetown, a boy, William Henry.

Jan. 24: Mr. and Mrs. David R. Fisher, Sr., of Millsboro, a girl, Lisa Marie.

SHOP AND SWAP IN THE WANT ADS

Advertisement for Home Center featuring 'JANUARY PRICE BUSTERS' with various home improvement products like paint, ladders, and insulation at discounted prices.

Advertisement for Harrington Seventh-day Adventist Church, featuring a special series of meetings on February 2 at 8:00 P.M.



CLASSIFIED ADVERTISING

SELLS and SELLS — To place your order, call Harrington 398-3206, ask for "CLASSIFIED" or use this handy order form

CLASSIFIED RATES:

- Minimum: 25 words or less — \$1
4 cents per word additional
For Box Numbers in ads add 25¢
Classified Display — \$1.25 per column inch
Appliances, Furniture, Cars, Boats.
Real Estate: Rent, Buy or Hire

RATE SCHEDULE

All ads in this column must be paid for in advance. This is the only way in which orders will be accepted for want ads. No ad order accepted for less than \$1. If you have an ad which you want inserted, count the words (name and address included), and multiply by the number of times you want the ad to run. Send that amount with the advertisement.

NOTICE

WE ARE NOT RESPONSIBLE FOR incorrect insertions or classified or display advertisements for more than ONE issue.

FOR SALE

FOR S/L/E—Floor covering, Armstrong A.J. Gold Seal in 6, 3 and 12 foot widths, Arge Linoleum Co., Milford, Del., phone 422-8471. tf 11-28b

Wallpaper, new patterns just arrived—Taylor's Hardware, 398-8291. tf 8-25

For sale—Scratch pads, 1x6 inches, at bargain prices—The Journal.

IT TAKES

WALLPAPER

To Bring A Room To Life

Milford Wallpaper

& Paint Co.

Phone Milford 422-8317

ALL KINDS OF USED FURNITURE

Priced from 13c and UP

LAKELAND FURNITURE MART

8, State St. Ext. DOVER, DEL. Phone 674-0180

For sale—Envelopes—100 plain 6 3/4 env., 175; 100 window 6 3/4 env., \$35; 100 No. 10 env., \$1.00. The Harrington Journal office.

For sale—West of Harrington, modern home on 1/2 acre lot, with tiled floor, modern kitchen, dining area, large living room, 3 bedrooms, tile bath, storm windows, fully insulated. 2 1/2 car garage \$12,500. 398-3111. tf 1-1

SINGER AUTOMATIC Sewing Machine

almost new in cabinet. Makes quilts, embroideries, etc. with-out attachments. Local party with good credit may assume payments or may complete balance of \$138.42. Full details and where seen WRITE: NATIONAL CREDIT DEPT. BOX 485, EASTON, MD. tf 1-25 exp.

Straw for Sale—clean and bright. Nelson Hammond, Felton. Phone 284-4722. tf 1-29 exp.

For Sale—At Massey Landing—8 room home furnished. 2 bath rooms. Includes T.V. outside aerial, includes porches back and front, 100 sq. ft. cleared. Also radio and record player. Three out houses. Electric heat throughout, fully insulated. Phone 539-8625. Ira W. Nelson, Rt. 2 Box 100, Dagsboro, Del. 19938. tf 2-5 exp.

FOR SALE SOYBEAN AND MIXED HAY

Thaddeus Warrington, Georgetown, Delaware. tf 3-2 exp.

MONUMENTAL SALE

10% to 25% OFF ALL STOCK

MOORE MEMORIALS

DENTON, MD.

Hottest Deal

In Delaware

56 X 10

2 and 3 Bedrooms

FREE DELIVERY & SET UP COMPLETELY FURNISHED

Only \$99 down

\$68.25 per month

W & W Mobile Homes, Inc.

Across from Air Force Base North Dover

736-6519 Dover, Del.

FOR RENT

For rent—House at 114 Fleming Street, 398-5533. tf 1-13

Apt. for rent—3 rooms and bath. Available Feb. 1. Wm. H. Wright, 398-3578. tf 1-15

For rent—6 room farm house on Harrington-Frederica Road. Call John P. Abbott, Jr. 398-8700. tf 1-22

HELP WANTED

Wanted—reliable man for all truck delivery. Year round. Harrington Lumber & Supply Co. Phone 398-3242. tf 2b 1-29 exp.

WANTED

Wanted—old books, lamps, dishes and furniture. Phone 335-5994 before 5 p.m.; 335-5667 after 5 p.m.

Wanted—Typing to do in my home. Call 398-3309. tf 10-9

Wanted—Used filing cabinet. Call 398-3206. tf 1-29

SERVICES

Day Nursery, will care for children while mothers work or shop. Betty Mintz, 398-3382. tf 1-8

Now open to service your sewing machine. Also parts and supplies. Rebuild all makes and models. New and used machines on sale \$19.95. Clean, oil and adjust in the home \$4.00. Boulevard Sewing Machine, Milford 422-7269. tf 1-29 exp.

CUSTOM - MADE

SLIPCOVERS DRAPERIES RUGS FABRICS UPHOLSTERY

SEB-AT-HOME SERVICE SMITH CHISM 422-8838 tf 10-19

ELECTRIC MOTOR REPAIR

Saws-Drillers Generators Mixers-Vacuums Rewinding - Reconditioning

WILSON ELECTRIC CO.

Vernon Road - Harrington, Del. Day-398-3904 - Night-398-8735 tf 4-19

FLOOR COVERINGS

Sandran and Forecast 6", 9" and 12" Widths Gleem Paint Wholesale and Retail

MILFORD WALLPAPER CO.

Phone Milford 422-8317

ROB LEE "DARLING'S"

APPLIANCES REPAIRS WASHERS - DRYERS ALSO SMALL APPLIANCES If They're Fixable We Fix'em Dial - 398-3840 - Harrington

FOR TERMITE CONTROL

All Work Guaranteed Free Estimates - Call -

RAYMOND DEAN

Harrington 398-3539 tf 3-14 b

SCHREIBER Heating & Service

FREE ESTIMATES 24-Hour Burner Service Clarence (Pete) Schreiber Owner

Call Harrington 398-3556

R.C.A. and ZENITH TV SALES

We Service All Makes Full Antenna Service

TROTTS APPLIANCES

Phone 398-3757

Classified Rates

CREDIT SERVICE

A bookkeeping charge of 25c will be made for all Classified Ads not paid in advance and an additional charge of 25c for each 30 days bills remain unpaid

RATES ARE NET

LOST

LOST—Pearl necklace (16 anniversary pearls on gold chain) vicinity of Harrington Elementary School. Call 398-3206; after 5 p.m. 398-3496. Reward.

CARD OF THANKS

Through this medium, I wish to express my appreciation and thanks to all my friends, neighbors, teachers and children of Harrington Public School who so generously remembered me with gifts, flowers, letters, and cards while I was in the hospital. As I would like to acknowledge each of these personally, due to the great number I have chosen this day to say "Thank You" to all who have been so kind and thoughtful.

MARY H. DOLBY tf 1-29 exp.

CARD OF THANKS

To all the friends, neighbors and relatives for the cards and flowers during my stay in the Delaware Hospital under the care of Dr. Fennell and the nurses.

RIS FRENCH and Family tf 1-29 exp.

CARD OF THANKS

We wish to thank our friends, neighbors and relatives for their cards, flowers and acts of kindness shown us during the illness and bereavement of our mother, Mrs. Edna Smith.

Also special thanks to Dr. Hewitt W. Smith for his services.

Mr. and Mrs. Ward Meloney and Family

Mr. and Mrs. Ernest M. Smith and Family

Mr. and Mrs. Marvin E. Smith and Family tf 1-29 exp.

NOTICES

ATTENTION LADIES OF HARRINGTON

—Tuesday, Feb. 9, 8:30. The Future Nurses Club of Harrington High School will sponsor a Stanley Party at the Washburn School. Everyone is welcome.

SHERIFF'S SALE

Of Valuable REAL ESTATE

By virtue of a writ of Levari Facias, for the sale of land to me directed, will be exposed to public sale by way of public vendue, in front of the Court House, State of Delaware, on

MONDAY, FEBRUARY 1, 1965 at 1:30 P.M., Eastern Standard Time.

ALL that certain lot, piece or parcel of land with the dwelling thereon erected thereon in the City of Dover, Kent County, and State of Delaware, known as Lot 12, shown on a Plan of LAKEWOOD MANOR, as prepared by Charles C. Hood, Surveyor, Kent County, State of Delaware, and recorded in the Office for the Recording of Deeds in and for Kent County, Delaware, in Plot Book 3, Page 61A.

Seized and taken in execution as the property of Levari Facias, for the sale of land to me directed, will be exposed to public sale by way of public vendue, in front of the Court House, State of Delaware, on

WEDNESDAY, FEB. 10, 1965 at 2:00 P.M., Eastern Standard Time.

ALL that certain lot, piece or parcel of land, with the dwelling thereon erected thereon in the City of Dover, Kent County, and State of Delaware, known as Lot 12, shown on a Plan of LAKEWOOD MANOR, as prepared by Charles C. Hood, Surveyor, Kent County, State of Delaware, and recorded in the Office for the Recording of Deeds in and for Kent County, Delaware, in Plot Book 3, Page 61A.

Seized and taken in execution as the property of Levari Facias, for the sale of land to me directed, will be exposed to public sale by way of public vendue, in front of the Court House, State of Delaware, on

WEDNESDAY, FEB. 10, 1965 at 2:00 P.M., Eastern Standard Time.

ALL that certain lot, piece or parcel of land, with the dwelling thereon erected thereon in the City of Dover, Kent County, and State of Delaware, known as Lot 12, shown on a Plan of LAKEWOOD MANOR, as prepared by Charles C. Hood, Surveyor, Kent County, State of Delaware, and recorded in the Office for the Recording of Deeds in and for Kent County, Delaware, in Plot Book 3, Page 61A.

Seized and taken in execution as the property of Levari Facias, for the sale of land to me directed, will be exposed to public sale by way of public vendue, in front of the Court House, State of Delaware, on

WEDNESDAY, FEB. 10, 1965 at 2:00 P.M., Eastern Standard Time.

ALL that certain lot, piece or parcel of land, with the dwelling thereon erected thereon in the City of Dover, Kent County, and State of Delaware, known as Lot 12, shown on a Plan of LAKEWOOD MANOR, as prepared by Charles C. Hood, Surveyor, Kent County, State of Delaware, and recorded in the Office for the Recording of Deeds in and for Kent County, Delaware, in Plot Book 3, Page 61A.

Seized and taken in execution as the property of Levari Facias, for the sale of land to me directed, will be exposed to public sale by way of public vendue, in front of the Court House, State of Delaware, on

WEDNESDAY, FEB. 10, 1965 at 2:00 P.M., Eastern Standard Time.

ALL that certain lot, piece or parcel of land, with the dwelling thereon erected thereon in the City of Dover, Kent County, and State of Delaware, known as Lot 12, shown on a Plan of LAKEWOOD MANOR, as prepared by Charles C. Hood, Surveyor, Kent County, State of Delaware, and recorded in the Office for the Recording of Deeds in and for Kent County, Delaware, in Plot Book 3, Page 61A.

Seized and taken in execution as the property of Levari Facias, for the sale of land to me directed, will be exposed to public sale by way of public vendue, in front of the Court House, State of Delaware, on

WEDNESDAY, FEB. 10, 1965 at 2:00 P.M., Eastern Standard Time.

ALL that certain lot, piece or parcel of land, with the dwelling thereon erected thereon in the City of Dover, Kent County, and State of Delaware, known as Lot 12, shown on a Plan of LAKEWOOD MANOR, as prepared by Charles C. Hood, Surveyor, Kent County, State of Delaware, and recorded in the Office for the Recording of Deeds in and for Kent County, Delaware, in Plot Book 3, Page 61A.

Seized and taken in execution as the property of Levari Facias, for the sale of land to me directed, will be exposed to public sale by way of public vendue, in front of the Court House, State of Delaware, on

WEDNESDAY, FEB. 10, 1965 at 2:00 P.M., Eastern Standard Time.

ALL that certain lot, piece or parcel of land, with the dwelling thereon erected thereon in the City of Dover, Kent County, and State of Delaware, known as Lot 12, shown on a Plan of LAKEWOOD MANOR, as prepared by Charles C. Hood, Surveyor, Kent County, State of Delaware, and recorded in the Office for the Recording of Deeds in and for Kent County, Delaware, in Plot Book 3, Page 61A.

Seized and taken in execution as the property of Levari Facias, for the sale of land to me directed, will be exposed to public sale by way of public vendue, in front of the Court House, State of Delaware, on

WEDNESDAY, FEB. 10, 1965 at 2:00 P.M., Eastern Standard Time.

ALL that certain lot, piece or parcel of land, with the dwelling thereon erected thereon in the City of Dover, Kent County, and State of Delaware, known as Lot 12, shown on a Plan of LAKEWOOD MANOR, as prepared by Charles C. Hood, Surveyor, Kent County, State of Delaware, and recorded in the Office for the Recording of Deeds in and for Kent County, Delaware, in Plot Book 3, Page 61A.

Seized and taken in execution as the property of Levari Facias, for the sale of land to me directed, will be exposed to public sale by way of public vendue, in front of the Court House, State of Delaware, on

WEDNESDAY, FEB. 10, 1965 at 2:00 P.M., Eastern Standard Time.

ALL that certain lot, piece or parcel of land, with the dwelling thereon erected thereon in the City of Dover, Kent County, and State of Delaware, known as Lot 12, shown on a Plan of LAKEWOOD MANOR, as prepared by Charles C. Hood, Surveyor, Kent County, State of Delaware, and recorded in the Office for the Recording of Deeds in and for Kent County, Delaware, in Plot Book 3, Page 61A.

Seized and taken in execution as the property of Levari Facias, for the sale of land to me directed, will be exposed to public sale by way of public vendue, in front of the Court House, State of Delaware, on

WEDNESDAY, FEB. 10, 1965 at 2:00 P.M., Eastern Standard Time.

ALL that certain lot, piece or parcel of land, with the dwelling thereon erected thereon in the City of Dover, Kent County, and State of Delaware, known as Lot 12, shown on a Plan of LAKEWOOD MANOR, as prepared by Charles C. Hood, Surveyor, Kent County, State of Delaware, and recorded in the Office for the Recording of Deeds in and for Kent County, Delaware, in Plot Book 3, Page 61A.

Seized and taken in execution as the property of Levari Facias, for the sale of land to me directed, will be exposed to public sale by way of public vendue, in front of the Court House, State of Delaware, on

WEDNESDAY, FEB. 10, 1965 at 2:00 P.M., Eastern Standard Time.

ALL that certain lot, piece or parcel of land, with the dwelling thereon erected thereon in the City of Dover, Kent County, and State of Delaware, known as Lot 12, shown on a Plan of LAKEWOOD MANOR, as prepared by Charles C. Hood, Surveyor, Kent County, State of Delaware, and recorded in the Office for the Recording of Deeds in and for Kent County, Delaware, in Plot Book 3, Page 61A.

Seized and taken in execution as the property of Levari Facias, for the sale of land to me directed, will be exposed to public sale by way of public vendue, in front of the Court House, State of Delaware, on

WEDNESDAY, FEB. 10, 1965 at 2:00 P.M., Eastern Standard Time.

ALL that certain lot, piece or parcel of land, with the dwelling thereon erected thereon in the City of Dover, Kent County, and State of Delaware, known as Lot 12, shown on a Plan of LAKEWOOD MANOR, as prepared by Charles C. Hood, Surveyor, Kent County, State of Delaware, and recorded in the Office for the Recording of Deeds in and for Kent County, Delaware, in Plot Book 3, Page 61A.

Seized and taken in execution as the property of Levari Facias, for the sale of land to me directed, will be exposed to public sale by way of public vendue, in front of the Court House, State of Delaware, on

WEDNESDAY, FEB. 10, 1965 at 2:00 P.M., Eastern Standard Time.

ALL that certain lot, piece or parcel of land, with the dwelling thereon erected thereon in the City of Dover, Kent County, and State of Delaware, known as Lot 12, shown on a Plan of LAKEWOOD MANOR, as prepared by Charles C. Hood, Surveyor, Kent County, State of Delaware, and recorded in the Office for the Recording of Deeds in and for Kent County, Delaware, in Plot Book 3, Page 61A.

Seized and taken in execution as the property of Levari Facias, for the sale of land to me directed, will be exposed to public sale by way of public vendue, in front of the Court House, State of Delaware, on

WEDNESDAY, FEB. 10, 1965 at 2:00 P.M., Eastern Standard Time.

ALL that certain lot, piece or parcel of land, with the dwelling thereon erected thereon in the City of Dover, Kent County, and State of Delaware, known as Lot 12, shown on a Plan of LAKEWOOD MANOR, as prepared by Charles C. Hood, Surveyor, Kent County, State of Delaware, and recorded in the Office for the Recording of Deeds in and for Kent County, Delaware, in Plot Book 3, Page 61A.

Seized and taken in execution as the property of Levari Facias, for the sale of land to me directed, will be exposed to public sale by way of public vendue, in front of the Court House, State of Delaware, on

WEDNESDAY, FEB. 10, 1965 at 2:00 P.M., Eastern Standard Time.

ALL that certain lot, piece or parcel of land, with the dwelling thereon erected thereon in the City of Dover, Kent County, and State of Delaware, known as Lot 12, shown on a Plan of LAKEWOOD MANOR, as prepared by Charles C. Hood, Surveyor, Kent County, State of Delaware, and recorded in the Office for the Recording of Deeds in and for Kent County, Delaware, in Plot Book 3, Page 61A.

Seized and taken in execution as the property of Levari Facias, for the sale of land to me directed, will be exposed to public sale by way of public vendue, in front of the Court House, State of Delaware, on

WEDNESDAY, FEB. 10, 1965 at 2:00 P.M., Eastern Standard Time.

ALL that certain lot, piece or parcel of land, with the dwelling thereon erected thereon in the City of Dover, Kent County, and State of Delaware, known as Lot 12, shown on a Plan of LAKEWOOD MANOR, as prepared by Charles C. Hood, Surveyor, Kent County, State of Delaware, and recorded in the Office for the Recording of Deeds in and for Kent County, Delaware, in Plot Book 3, Page 61A.

Seized and taken in execution as the property of Levari Facias, for the sale of land to me directed, will be exposed to public sale by way of public vendue, in front of the Court House, State of Delaware, on

WEDNESDAY, FEB. 10, 1965 at 2:00 P.M., Eastern Standard Time.

NOTICES

NOTICE

In pursuance of an order of H. Clifford Clark, Register of Wills, in and for Kent County, Delaware, dated Jan. 26th A. D. 1965, notice is hereby given of the granting Letters Administration on the estate of Cora C. Parker, deceased, the testatrix of Jan. A. D. 1965. All persons having claims against the said Cora C. Parker are required to exhibit the same to such Administrators within nine months after the date of the granting of such Letters, or abide by the law in that behalf, which provides that such claims against the said estate not so exhibited shall be forever barred.

William F. Parker and Lela P. Taylor Administrators of Cora C. Parker, Deceased.

H. Clifford Clark, Register of Wills. Date To Start: DEADLINE — 5:00 P. M. Wednesday. 3t 2-12 exp.

NOTICE

In pursuance of an order of H. Clifford Clark, Register of Wills, in and for Kent County, Delaware, dated Jan. 4th A. D. 1965, notice is hereby given of the granting Letters Administration on the estate of Jan. A. D. 1965. All persons having claims against the said Cora C. Parker are required to exhibit the same to such Administrators within nine months after the date of the granting of such Letters, or abide by the law in that behalf, which provides that such claims against the said estate not so exhibited shall be forever barred.

William F. Parker and Lela P. Taylor Administrators of Cora C. Parker, Deceased.

H. Clifford Clark, Register of Wills. Date To Start: DEADLINE — 5:00 P. M. Wednesday. 3t 2-12 exp.

NOTICE

In pursuance of an order of H. Clifford Clark, Register of Wills, in and for Kent County, Delaware, dated Jan. 4th A. D. 1965, notice is hereby given of the granting Letters Administration on the estate of Jan. A. D. 1965. All persons having claims against the said Cora C. Parker are required to exhibit the same to such Administrators within nine months after the date of the granting of such Letters, or abide by the law in that behalf, which provides that such claims against the said estate not so exhibited shall be forever barred.

William F. Parker and Lela P. Taylor Administrators of Cora C. Parker, Deceased.

H. Clifford Clark, Register of Wills. Date To Start: DEADLINE — 5:00 P. M. Wednesday. 3t 2-12 exp.

ADVERTISEMENT FOR BIDS

Sealed proposals will be received by the State Highway Department at the State Office Building, Room 202 in the Highway Administration Building, Dover, Delaware, until 2:00 P.M., EST., February 19, 1965, and thereafter until the public opening of bids at 10:00 A.M., EST., February 22, 1965. The proposals shall be for the following approximate quantities:

CONTRACT NO. 64-04-014 ROAD BRIDGE #177 ON R.D. #274 0.0205 MILES

NEW CASTLE COUNTY Widening of Existing Structure to provide 24' wide Reinforced Concrete Roadway. COMPLETION DATE: 30 WORKING DAYS

CONTRACT NO. 64-04-015 WIDENING BRIDGE #177 ON R.D. #274 0.0205 MILES

NEW CASTLE COUNTY Widening of Existing Structure to provide 24' wide Reinforced Concrete Roadway. COMPLETION DATE: 30 WORKING DAYS

CONTRACT NO. 64-04-016 WIDENING BRIDGE #177 ON R.D. #274 0.0205 MILES

NEW CASTLE COUNTY Widening of Existing Structure to provide 24' wide Reinforced Concrete Roadway. COMPLETION DATE: 30 WORKING DAYS

CONTRACT NO. 64-04-017 WIDENING BRIDGE #177 ON R.D. #274 0.0205 MILES

NEW CASTLE COUNTY Widening of Existing Structure to provide 24' wide Reinforced Concrete Roadway. COMPLETION DATE: 30 WORKING DAYS

CONTRACT NO. 64-04-018 WIDENING BRIDGE #177 ON R.D. #274 0.0205 MILES

NEW CASTLE COUNTY Widening of Existing Structure to provide 24' wide Reinforced Concrete Roadway. COMPLETION DATE: 30 WORKING DAYS

CONTRACT NO. 64-04-019 WIDENING BRIDGE #177 ON R.D. #274 0.0205 MILES

NEW CASTLE COUNTY Widening of Existing Structure to provide 24' wide Reinforced Concrete Roadway. COMPLETION DATE: 30 WORKING DAYS

CONTRACT NO. 64-04-020 WIDENING BRIDGE #177 ON R.D. #274 0.0205 MILES

NEW CASTLE COUNTY Wid



Proclamation

STATE OF DELAWARE EXECUTIVE DEPARTMENT

Whereas, E. Hobson Davis, Tax Commissioner on behalf of the Tax Department of the State of Delaware, has reported to me a list of corporations which for two years preceding such report have failed to pay the taxes assessed against them and due by them under the laws of this State.

Now, therefore, I, ELBERT N. CARVEL, Governor of the State of Delaware, do hereby issue this proclamation according to the provisions of Sections 511 and 512 of Title 8 of the Delaware Code of 1953, as amended, and do hereby declare under this act of the Legislature that the charters of the following corporations, reported as aforesaid, are repealed:

- A and B Investment Co.
A. Burke Layton, Inc.
A. & D. Investments, Inc.
A New Tomorrow Productions, Inc.
Abe and Gertrude Messinger Foundation, Inc.
The Able Vending Company
Acceptance Corporation of America
Ace Electric Supply Company
Ace Van & Storage Co., Inc.
Acenes, Incorporated
Acme Register Company
Action Cells, Incorporated
Active Organic Mfg. Corp.
Adco Image Corp.
Admiral American Corporation
Admiral Industries, Inc.
Admiral Photo Corporation
Advance Cable Systems Corporation
Advanced Products Corporation, The
Advancers Incorporated
Aem, Inc.
Aero Fidelity Acceptance Corp.
Aero-Lite Corporation
Aero Service Corp. (Western)
Aero Space Electronics, Inc.
Aerodyne, Inc.
Afcu Company, The
Affiliated Brokers, Inc.
African-American Mercantile and Investment Corporation
Afro-American Mutual Discount Corporation
Afton, Inc.
Agricultural Industrial Marketing Institute and Foundation
Agua Neuva Stables, Inc.
Aid, Inc.
Aids to Industry, Inc.
Air Pollution Contracts, Inc.
Air Purchasing and Traffic Magazine, Inc.
Air-Rock Corporation
Aircroach Reservations, Inc.
Aircraft Exchange Security Corp.
Aircraft Research & Development Corporation
Alan Productions, Inc.
Alapocas Company, The
Alaska-Canadian Corporation
Alaska Leaseholds, Inc.
Alaska Oil Lands, Inc.
Alex Kenter, Inc.
Alexander & Company
Alka Hosiery Mill, Inc.
All Weather Corporation
Allied Construction Company
Allied Sales Corporation
Allied Services Corp.
Alma Development Corporation
Alpha Instrument Company, Incorporated
Alpine Construction Co., Inc.
Aluma-Tron, Inc.
Alynie, Inc.
Am Central Association, Inc.
Amalgamated Drug Corporation
Ambassador East, Inc.
Amelux Electronics Corporation
American Board of Forensic Medicine, Inc.
American Building Maintenance Industries, Inc.
American Business Enterprises, Ltd.
American Cemetery of Paris, Incorporated, The
American College of Forensic Medicine, Inc.
American Distributors Control, Inc.
American Engineering Equipment Corporation
American Facsimile Corporation
American General Corporation
American International Service Corp.
American Israeli Sports and Entertainment Enterprises, Inc.
American Land, Produce & Mineral Corporation
American Movers Institute
American Nursing Homes, Inc.
American Orbitronics Corporation
American Overseas Engineering Contractors, Inc.
American & Overseas Underwriters, Inc.
American Parents Association
American Science Complex, Inc.
American Sports Plan, Inc.
American Systronics, Inc.
American Telasco, Ltd.
American Telecontrol Corp.
American Tramp Shipping Development Corporation
American Univend Corporation
American Voting Machine Co.
American Wood Fabric Institute, Incorporated
Americana Properties, Inc.
Ames Building Contractors, Inc.
Amers Corporation
Ampol, Inc.
Analytical Research Associates, Inc.
Anderson Production Methods, Inc.
Anglo-American Welfare Foundation of Cuba
Anti-Communist Pan-American Association
Apex Agency Inc., The
Apex Construction Company

PROCLAMATION

- Apex Trading Corporation
Appalachian Company
Aqua Pools of America, Inc.
Aquavac Laboratories, Inc.
Ardee Oil Co.
Ariana, Inc.
Arizona Magnetite Company
Armed Forces Association
Armed Services Mutual Assistance and Credit Association
Arnold Design & Engineering of Wisconsin, Inc.
Arnold Transport, Inc.
Arrow Wrecking and Lumber Co., Inc.
Artic Realty, Inc.
Asbestos Mining & Manufacturing Corporation of Arizona
Asphalt Petrochemicals, Inc.
Assnaf Trading Company (USA), Inc.
Associated Fruit & Shipping Corporation
Associated Hair Stylists, Inc.
Associated Management, Inc.
Associated Processors, Inc.
Associated Tank Lines, Inc.
Astro-Communications, Inc.
Astro Dynamics, Inc.
Astro-Radiation, Inc.
Astro-Therm-Ionic Metals, Inc.
Astrochem Electronics Corporation
Atkins & Brittingham Realty, Inc.
Atlantic Airways, Inc.
Atlantic Brokerage Corporation
Atlantic Kennels, Inc.
Atlantic Logging Co.
Atlantic Manufacturing Company
Atlantic Mid-Continent Corporation
Atlantic Printing Co.
Atlantic Truck Terminal, Inc.
Atlas Agency, Inc.
Atlas Bowling Centers, Inc.
Atlas Connector Company, Inc.
Atlas Sewing Centers, Inc. of Arizona
Atlas Sewing Centers, Inc. of Baltimore
Atlas Sewing Centers, Inc. of Cleveland
Atlas Sewing Centers, Inc. of Columbus
Atlas Sewing Centers, Inc. of Denver
Atlas Sewing Centers, Inc. of Fort Worth
Atlas Sewing Centers, Inc. of Indiana
Atlas Sewing Centers, Inc. of Indianapolis
Atlas Sewing Centers, Inc. of Kansas City
Atlas Sewing Centers, Inc. of Minneapolis
Atlas Sewing Centers, Inc. of Nebraska
Atlas Sewing Centers, Inc. of New Jersey
Atlas Sewing Centers, Inc. of New Mexico
Atlas Sewing Centers, Inc. of Oregon
Atlas Sewing Centers, Inc. of Philadelphia
Atlas Sewing Centers, Inc. of Pittsburgh
Atlas Sewing Centers, Inc. of Richmond
Atlas Sewing Centers, Inc. of St. Louis
Atlas Sewing Centers, Inc. of South Carolina
Atlas Sewing Centers, Inc. of Tennessee
Atlas Sewing Centers, Inc. of Virginia
Atlas Sewing Centers, Inc. of Washington, D. C.
Atlas Stores, Inc. of California
Atlas Stores, Inc. of San Diego
Atlas Stores, Inc. of San Francisco
Atlas Stores, Inc. of San Jose
Atwood Corporation, Inc.
Augustine Beach Hotel, Inc.
Auto Body Association of Delaware, Inc.
Auto-Elec Engineering Corporation
Auto Glass Distributors, Inc.
Automated Block Corporation of America
Automated Teaching Systems, Inc.
Automatic Parking, Inc.
Automatic Parking of Missouri, Inc.
Automatic Restaurants of Kentucky, Inc.
Automatic Travel Coverage, Inc.
Automotive City, Inc.
Automotive Transmission Rebuilders, Inc.
Aylesbury Estates, Inc.
B & B Chandler, Inc.
B & B New and Used Cars, Inc.
B & B Poultry Co., Inc.
B & D Ammo, Inc.
B. & G. Investment Associates, Inc.
B & H Industries, Inc.
B & L Contractors Supply, Inc.
B. M. P. Building, Inc.
B & W Oil Field Service, Inc.
Babor Tool Company
Back Bay Gun Club, Inc.
Balboa Laboratories, Inc.
Baldman Enterprises, Inc.
Baldur Laboratories, Inc.
Baldwin Gardens, Incorporated
Baltimore Colliery Company
Barbara Stone Shops of Norfolk, Inc.
Barrington-Partos, Incorporated
Basic Building Products Corporation
Baton Construction Corporation
Batteries Inc.
Bay Poultry Products, Inc.
Bda Films, Incorporated
Beatty Brothers, Inc.
Beaverdam Brands, Inc.
Beckynos Mining Corp.
Bellevue Garage Inc.
Ben Goodman & Son, Inc.
Benincasa Chevrolet, Inc.
Berkley Publishing Corporation of Canada
Berman Enterprises, Inc.
Berman Realty Company Incorporated

PROCLAMATION

- ported
Berne Development Corporation
Best Independent Motels of America, Inc.
Better Business Bureau of the United States of America, Inc.
Bill-Mar Holding Corporation
Billat Aviation Corp.
Biophysical Research Products, Inc.
Black Hawk, Inc.
Blackwood Builders, Inc.
Bladensburg Warehousing Corp.
Bloom Manor Development Company
Blue Haven Industries, Inc.
Blue Star Uranium, Inc.
BMC 142, Inc.
Boathouse, Inc.
Boca Raton Palms, Inc.
Bolivian-American Tire & Rubber Mfg. Corp.
Bond & Mortgage Liquidation Corporation, The
Bond Oil & Gas, Ltd.
Bonus Rent-A-Car System, Inc.
Border Petroleum Company
Borgia Co., The
Boris Kroll Fabrics of Miami, Inc.
Boschen Chemical Company
Bosworth-Masters Marine, Inc.
Boulevard Speedway, Inc.
Bowling Enterprises, Inc.
Bowser Engineering Company
Bragley Publishing Corporation, The
Bramble Trucking Corporation
Bramelco, Inc.
Brand Dispatching Company
Brandywine Business Men's Association, Inc.
Brandywine Hosiery Mills, Inc.
Brandywine Securities, Inc.
Breslin Plastering Company
Briggle Productions, Inc.
British Colonial Holdings, Inc.
British Guiana Pulp & Paper Ltd.
Broadcasters, Inc.
Brockwood, Inc.
Brokers Service Corporation
Brookhorn-Shasta Corporation
Buckley-Jaeger Broadcasting Corporation of Massachusetts
Bucks County Farms, Inc.
Burnley Development and Management Corporation
Butco Corporation
C. B. Fisher and Associates
C. E. Murray Company, Inc.
C. F. Carter & Son, Inc.
C. I. A., Inc.
C. L. Realty Co.
C and R Corporation
C & S Industries, Inc.
Cable Carriers, Inc.
Cal-Carb Corporation
Cal-Tex Realty Co.
Caldwell Publishing Corp.
California Dorsey Trailer Sales, Inc.
Camden-Dover Housing Corporation
Camelot Builders, Inc.
Camelot Development Co.
Cameron Housing Corporation
Cameron & Son, Inc.
Camp David, Inc.
Capaldi & Capano, Inc.
Capital Business Service, Inc.
Capital Finders Corporation
Capital Guidance Corporation
Capital Nursery Sales Co., Inc.
Capitalism, Inc.
Capital Kwik-Kafe Coffee Service, Inc.
Caravan Corporation, The
Cargo Handling Co., Inc.
Cargon Transport, Inc.
Caribbean Mfg. & Chemical Co., Inc.
Caribe Mining Corporation
Carl's Furniture Stores, Inc.
Carl Hosiery Co., Inc.
Carlyle Drilling Company
Carmen Holding Co.
Carpet Craft, Inc.
Carr of Augusta, Inc.
Carr Millinery Corp.
Carriage Lodges, Inc.
Carson Excavating Company, Inc.
Carter Realty Company
Casa Industries Corporation
Casco Agency, Inc.
Cash-O-Matic Coupon Corp.
Castle Homes, Inc.
Cats Realty Company
Cayuga Industries Corporation
Celtic Vending Corp.
Cement Gun Company
Central Auto Top & Body Company, Inc.
Central City Redevelopment, Inc.
Central Corporation, The
Central Park Realty, Inc.
Central Plumbing Supply Company
Central States N.T.S., Inc.
Century Production Company
Century Sound Corporation
Cepac, Inc.
Chalmers Oil & Gas Company
Chamberlain & Royle, Inc.
Charles M. West & Son, Inc.
Charr-Coal Crater Corporation
Chesapeake Real Estate & Development Co.
Chem-Lac, Inc.
Chem-Oil Corporation
Chemurgy Corporation
Chemelectronics, Inc.
Chemical Controls, Inc.
Chemicals & Residues, Inc.
Chicago Trade Show Review, Inc.
Chicken Basket, Inc.
Children of the Sea, Inc.
Chili-Pup, Incorporated
Christiana Castle No. 20 Knights of the Golden Eagle of Christiana Delaware Incorporated
Christiansen Corporation
Chuck's Septic Tank Service, Inc.
Chud W. Wendle Foundation, Inc.
Cinema Studios, Inc.
Circle Lake Apartments Corporation
Circuit Aids, Inc.
Cirrus Flying Club, Inc.
Citation Contractors, Inc.
Citra Corporation, The
City Office Machines, Inc.
City Redevelopment Corporation

PROCLAMATION

- Civil and Military Investors Mutual Fund, Inc.
Clarence W. Davis Co., Inc.
Clarence Willey, Inc.
Claude Smith Transport, Inc.
Clearfor Development Corporation
Cleaver Brothers, Inc.
Clenair Co.
Clifton Enterprises, Inc.
Clinton Street Corp.
Club Consultants, Inc.
Coastal Corporation
Coastal Dry-Manure Corp.
Coastal Gas Co., Inc. of Delaware
Coastal International Corporation
Cochran Equipment Co.
Code Cover Company
Codlek, Inc.
Coffee King System, Inc.
Coffee Run, Inc.
Cohasset Corp.
Cohen Bros., Inc.
Coin Changer of Washington, Inc.
Coin-Op Vending Corporation
Colabar Candy Company
Colamer Corp.
Cold Control, Inc.
Coldaire Manufacturing Company, Inc.
Collins Electronics Co., Inc.
Columbian Exploration and Development Corporation
Color Electronics Corporation
Colorado Real Estate & Development, Inc.
Columbia Enterprises, Inc.
Columbium Corporation, The
Combustion Control Service Co., Inc.
Combustion Technology Corporation
Comfortron Inc.
Commercial Decal, Inc.
Commercial Empire Corporation
Commercial Illustrators, Inc.
Commercial Insters, Inc.
Commonwealth Securities Limited
Community Budget Service, Inc.
Con-Electro Corporation
Concord Diner & Dining Room, Inc.
Concord Products Inc.
Concrete Restoration, Inc.
Congo Construction Company
Congo International Management Corporation
Conowingo Motel, Inc.
Consolidated Boat and Electronics Corporation
Consolidated Research and Manufacturing Corporation
Consolidated Vending Corp.
Construction Management Corp.
Contact Lens Foundation, Ltd.
Container Loading Corporation
Container Mfg. Co.
Continental American National Stamp Corporation
Continental Associates Corporation
Continental Brands, Inc.
Continental Car-Nu-Ba Corporation
Continental Holding, Inc.
Continental Industrial Electronics Corp.
Continental International Corp.
Continental Reserve Wire Corporation
Continental Steel & Wire Corporation
Continental Television Corporation
Contractors Paint & Supply Co.
Convenient Food Marts of America, Inc.
Convention Preview Publications, Inc.
Cormit, Inc.
Corn States Insurance Agency, Inc.
Corner Grill, Inc.
Corporate Consultants, Inc.
Corporate Loan & Finance, Inc.
Corrosion & Materials Engineering, Inc.
Corundum Co., The
Count Dorelis Ltd.
County Sanitation Co.
County Shopping Center, Inc.
Cove Point Construction Co., Inc.
Covey Litho Company
East Side Mercury Sales, Inc.
East Washington St. of N. Attleboro, Inc.
Eastern Data Processes, Inc.
Eastern N. T. S., Inc.
Eastern Produce, Inc.
Eastern States Producing Company
Eastover Hills Company
Econo Drug, Inc.
Editorial Associates Inc.
Edon Roc Ltd.
Education-Electronic, Inc.
Edward A. Berger Co.
Edward-Meadow Corporation, The
Edwin M. Charles Company, Inc., The
EFC Liquidating Corporation
Elam Shipping Corporation
Electra Industries, Inc.
Electrocolor Metal Processing Corporation
Electro Optical Development & Research Co., Inc.
Electronic Color Corporation
Electronic Credit Systems, Inc.
Electronic Development Corporation
Electronic Parking Meters, Inc.
Electronic Research Corporation of America
Electronic Vision Industries, Inc.
Electronics Converter Industries, Inc.
Elisa Holiday, Inc.
Elite Toiletries & Cosmetics Inc.
Ellis Research Laboratories, Inc.
Elmot Corporation
Emco Insurance Corporation
Empire Funding Corporation
Empire Toiletries & Cosmetics Inc.
En Mail Machine Corporation
Energy Dynamics Corporation
Engineering Design Information Services, Inc.
Erickson Machinery Corporation
Erwood Corporation

PROCLAMATION

- Inc.
Delaware Colliery Company
Delaware Conference Home for the Aged, Inc.
Delaware Day School for Handicapped Children, Inc.
Delaware Holly, Inc.
Delaware Kart Club Association
Delaware Kennel & Raceway, Inc.
Delaware Leasing Company
Delaware and Maryland Farms Company, The
Delaware Realty and Development Corporation
Delaware Refrigeration, Inc.
Delaware River Construction Co., Inc.
Delaware State College of Beauty Culture, Inc.
Delaware Valley Aggregate Company
Delaware Valley Landscape & Chemical Service, Inc.
Delaware Ventilated Awning Co., Inc.
Delawareans for Voluntary Unionism, Inc.
Delka Research Corp.
Dell's, Inc.
Delle Donne & Remedio Supply Co.
Delmarva Aerial Spray Co., Inc.
Delmarva Gas Association, Inc., The
Delmarva Sales Company, Inc.
Delmar Construction Co.
Deltec Corporation
Dental Dealers of America, Inc.
Design in Crystal Corporation
Designs for Recreation Areas, Inc.
Developing American Tourist Enterprises, Inc.
Development Optics, Inc.
Devon Development Corporation
Dexter Foundation, Inc.
Di Ciero Restaurant, Inc.
Di-Ferron Laboratories, Inc.
Diamond State Linoleum & Tile Co.
Dickson-Manville Colliery Company
Dickson Weatherproof Nail Company
Dictation Systems, Inc.
Dictograph Corporation
Diner Foods, Inc.
Direct Military Services Incorporated
Discount House of Pictures, Frames and Mirrors, Inc.
Display Consultants, Inc.
Distillex Industries Inc.
Diversified Oil & Mining Corporation
Dixie N. T. S., Inc.
Dixie Oil & Gas Co.
DNH Land Development and Sales Co.
Do-Drop Inn, Inc.
Dobco, Inc.
Doc Tomb Wagon Train & Last Round-Up, Inc.
The Domestic Trade Corporation
Dominion Chevrolet Co.
Donovan Realty Co., Inc.
Dooley & Gardner, Inc.
Doring Industries, Inc.
Dorothy Corporation, The
Dover Cosmetics, Inc.
Drew Steamship Services Incorporated
Dri-Clean-O-Mat Corp.
Drinkmate Mfg. Inc.
Duane Cloud Foundation, Inc.
Dulles International Industrial Park, Inc.
Dunleith Community Civic Association, The
Dupont Cab Company
Dworkan Corporation, The
Dyna-Mech, Inc.
Dyna Sales Corporation of New York
Dyna Sales New England, Inc.
Dyna Sales South, Inc.
Dynergistics Research, Inc.
Dynamic Air Engineering, Inc.
Dynamic Projections, Inc.
Dyrex, Inc.
E. & J. Investment Corporation
E. L. Traylor Company, Inc.
E. P. S. Corporation
Eagle Litho Company
East Side Mercury Sales, Inc.
East Washington St. of N. Attleboro, Inc.
Eastern Data Processes, Inc.
Eastern N. T. S., Inc.
Eastern Produce, Inc.
Eastern States Producing Company
Eastover Hills Company
Econo Drug, Inc.
Editorial Associates Inc.
Edon Roc Ltd.
Education-Electronic, Inc.
Edward A. Berger Co.
Edward-Meadow Corporation, The
Edwin M. Charles Company, Inc., The
EFC Liquidating Corporation
Elam Shipping Corporation
Electra Industries, Inc.
Electrocolor Metal Processing Corporation
Electro Optical Development & Research Co., Inc.
Electronic Color Corporation
Electronic Credit Systems, Inc.
Electronic Development Corporation
Electronic Parking Meters, Inc.
Electronic Research Corporation of America
Electronic Vision Industries, Inc.
Electronics Converter Industries, Inc.
Elisa Holiday, Inc.
Elite Toiletries & Cosmetics Inc.
Ellis Research Laboratories, Inc.
Elmot Corporation
Emco Insurance Corporation
Empire Funding Corporation
Empire Toiletries & Cosmetics Inc.
En Mail Machine Corporation
Energy Dynamics Corporation
Engineering Design Information Services, Inc.
Erickson Machinery Corporation
Erwood Corporation

PROCLAMATION

- Esan Oil Company
Essex Hotel and Cafe, Inc.
Estate Holding Corp.
Eudaemonic Foundation Ltd., The
European Research & Development Corporation
Evelyn Hosiery Co., Inc.
Excelsior National Corp.
Exchange Cabbus Underwriters Agency, Inc.
Exchange Underwriters Agency, Inc.
Executive International United Management Consultants, Inc.
Exodyne Enterprises, Incorporated
Express Barge Lines, Inc.
F. Capano Construction Co., Inc.
F. & J. Apartments, Inc.
F. & J. Tigani Builders, Inc.
F. M. Guide, Inc.
F. R. Chilton and Co.
Fabian's, Inc.
Fairfield Brands, Inc.
Fairfield Controls, Inc.
Fairview Construction Co., Inc.
Faith Community Baptist Church, Inc.
Falcon Securities Services, Inc.
Family Security Shelter Corp.
Fantabulous Estates, Inc.
Far East Restaurant, Inc.
Farrissett Transport, Inc.
Federal Instruments Corporation
Federated Bowling Corporation
Federated Foods of Maryland, Inc.
Fidelity Registrar & Transfer Corporation
Financial Corporation of California Inc.
Financial Planning Service, Inc.
Finders Oil & Gas Corporation, The
Finest Scaffold Company, The
Finn Electronics Corporation
First Capital Corporation
First Development Company
First Financial and Development Corporation
First State Auto Supplies, Inc.
First State Fraternal Supply Co., Inc.
First Transatlantic Fund Corporation, The
First Transcaribbean Corporation
First U. S. Southern Corp.
First West Palm Drug Corporation
Fiscal Services, Inc.
Fitch Hosiery Co., Inc.
Five, Inc., The
530 Social Club, Inc.
Flash Enterprises, Inc.
Fleet Car, Inc.
Flex-I-Brush, Inc.
Flexifoam Industries, Inc.
Flextron Industries, Inc.
Flo-Container Incorporated
Florentine Importing Company
Floyd Oles, Inc.
Flying Ten Club
Foggy Bottom, Inc.
Folk Festival Foundation
Fontana National Corporation, The
Food Corporation of America
Food Transport Service Corporation
Foot Levelers, Ltd.
Force Steamship Corporation
Foreign Trade Corporation
Forspack, Inc.
Forsyth and Company, Inc.
Fort Stanwix Manufacturing Company, Inc., The
Foundation of Saint Joseph, Inc., The
Foundation Services, Inc.
Fountain Enterprises, Inc.
Fountain's, Inc.
Fountain Trailer Sales Co.
4-D Marketing Company, Inc.
Fourbees Chemicals, Inc.
Fowler Brothers, Incorporated of Detroit
Francis Management Co.
Frank Gallagher and Company
Frank Stranahan's Champions' Formula, Inc. of California
Franklin Midwest Industries, Inc.
Frankwood Corporation
Frapa Maintenance Corp.
Free Trade Corporation
Frente Revolucionario Democratico, Inc.
Frontier Research & Development Corp.
Frozen Fruit Products Corporation
Furness Line Ltd.
Fuzion Corporation
Fynne, Keeling and Associates, Inc.
G. & A. Development Company
G. & A. Realty Corporation
G. E. Hall, Inc.
G & G Enterprises, Inc.
G & W Associates, Inc.
Gaddy & Gaddy Construction Co., Inc.
Gainture, Inc.
Gallo Electronics Corporation
Gardner Corporation
Gateway Engineered Products Corp.
GayLife Incorporated
Gem Color Co., Inc.
General Aircraft Company of America, Inc.
General Bowling Corporation
General Dielectrics, Inc.
General Excavators, Inc.
General Exchange Enterprises, Inc.
General Expressways, Ltd.
General Pool Service, Inc.
General Radiotelephone Co.
General Realty and Developing Corporation
General Screen Corp.
Geo-Development Corporation
Georgetown University Alumni Association of Delaware
Gibraltar C. P. I., Inc.
Gibraltar Land Development Corp.
Gifford & Takahashi, Inc.
Gilbert H. Robinson, Inc.
Gilmer Realty Company
Glacier Publishing International, Inc.

PROCLAMATION

- Glennview Homecraft Co.
Globe Construction Company
Globus Fund, Inc.
Gly, Incorporated
Golden Hind Estates, Inc.
Goldop, Inc.
Good-All Plumbing & Heating, The
Goodrich Associates, Inc.
Gopher, Inc.
Gordon of Fairfax, Inc.
Gotham Investment Corporation
Gotham N. T. S., Inc.
Goubaud De Paris, Inc.
Governor Printz Realty Company
Grade-A Frozen Food Co.
Graham Freeland Incorporated
Grail Inc.
Grandview Farms, Inc.
Great Lakes N. T. S., Inc.
Great Western Chemical Mining Corporation
Great Western Oil and Gas Company
Greater Paint & Chemical Corp.
Greenlea Corporation, The
Greenville Apartments Corporation
Greenwood Colliery Company
Grendon, Inc.
Griffith Teleprinter Corporation
Grig Co., Inc.
Grossbart Jewelers, Inc.
Grotton Company
Group Builders, Inc.
Grubb Road Builders, Inc.
Gruman-Bond Equipment Corp.
Guardian Holding Corporation
Guinea American Corporation
Gulf N. T. S., Inc.
Gumboro Feed Service, Inc.
H & H Dredging Company, Inc.
H. I. Scott Realty Company
H. L. Hutton & Co.
H. M. S. E. Investing Corp.
H. Ryan Appliances, Inc.
H. Ryan Furniture, Inc.
H. Ryan Furniture Supermarket, Inc.
Hackett Productions, Inc.
Hagrob Picture Corporations
Halcyon Corporation
Hall Production Co.
Hall-Sears International, Inc.
Hallmark Properties, Inc.
Hamiker, Ltd.
Hande Mfg. Corp.
Haney, Incorporated
Har-Del Corporation
Harbor Estates, Inc.
Harlem-Ogden Self Service Cleaning & Laundry Village, Inc.
Harold S. Kelshaw Corporation
Harrison Transport Company, Inc.
Harry Gibson, Inc.
Harvey's Enterprises, Inc.
Harvey Lowery, Inc.
Harvey Refrigeration Company
Hasday Optical Co. of Texas, Inc.
Hawke Company
Hawley Construction Co., Inc.
Hayden Construction Company, Inc.
Heavener Hotels, Incorporated
Hem Corporation.
Hemisphere Enterprises, Inc.
Henmar Corporation
Herrods Run Oil and Gas Company
Hession Textile Corp.
Hi-Way Safety Equipment Co.
Hickory Chick, Inc.
Hightower-Morse & Company
Hill-Brown Fabrics, Inc.
Hillsboro Marine, Inc.
Hillside Development Corporation
Hillside Liquors, Inc.
Hilltop Diner, Inc.
Hinners Brothers, Inc.
Holiday Hills Civic Association, Inc.
Holiday Hills, Inc.
Holiday Homes, Inc.
Holiday Marina Boatel Development Corp.
Holiday Realty Co.
Holiday Sales & Royalty Co., Inc.
Hollingsworth-Wiley Corporation
Holly Oak Community Club
Home Pride Products, Inc.
Homemakers Investment Corporation
Homer Foundation, Inc.
Homewood Motors, Inc.
Honey Dew Food Stores of Connecticut, Inc.
Honey Dew Food Stores, Inc.
Honey Dew Food Stores of New Jersey, Inc.
Hopewell Processing Corporation
Hotel Carlyle of Washington, D. C.
Hotel Consultants International, Inc.
Hotel Investors, Inc.
House of Koshu, Inc.
House of Poitier, Inc.
Hudson Poultry Farms, Inc.
Hughes & Tucker Transport Co., Inc.
Hunters and Anglers Association
Huntington Marblehead Company
Hush Bumper Service, Inc.
Huston Culver Fertilizers, Inc.
Hy-Point Dairy Farms, Inc.
Hygeia Electronics Corporation
Insurance & Mutual Fund Management Corporation
Insurance Offices of the Seaboard Corporation
Integrity Professional Service, Inc.
Inter-American Corp.
Inter American Development Corporation
Inter-American Industries, Inc.
Inter-American Investing Corp.
Inter-American Management Corporation
Inter-American Products Corporation
Inter-Mountain Sales Company
Inter-State Acceptance Corporation
Inter-Urban Corporation
Intercontinental Management Corporation
Intercontinental Wallcovering, Inc.

PROCLAMATION

- Interim Technical Corporation
International Advisors, Ltd.
International Apparel Associates Inc.
International Brazilian Mining Corporation
International Donut Corp.
International Gas Company
International Industrial Development Consultants, Inc.
International Iron of Costa Rica, Inc.
International Marketland, Inc.
International Metal Industries, Inc.
International Monorail Systems, Inc.
International Placement Bureau, Inc.
International Proprietaries, Incorporated
International Services, Inc.
International Ski Corporation
International Small Industry Development Corporation
International Steel Corporation
International Structures, Inc.
International Teaching Systems, Inc.
International Tourist Development Corporation
International Vending Corporation
Interstate Industries, Inc.
Investors Leasing Corporation
Isis International Corporation
J. C. Traynor, Inc.
J. E. Holmes & Associates, Inc.
J I Investment, Inc.
J & J Spiritualis Temple, Inc.
J. M. Erault Enterprise Incorporated
J. Meat Co.
J. N. P. Inc.
J. Noble Simpson, Inc.
J. P. & L. Auto, Inc.
J. R. Meehan Foundation, Inc.
J. & S. Transport, Inc.
Jack Pry Limited, Baltimore
Jackson Experimental Farm, Inc.
Jacqueline Cochran Beauty Salon, Inc.
Jamar Management Service Co.
James H. Bryant Foundation, Inc.
James T. Ryan, Inc.
Jan Electronics Corporation
Janus Corporation, The
Jay National Corp.
Jefferson Distributors Corp.
Jeffrey Corporation
Jesse H. Anderson Company
Jhonics Inc.
Jhmick, Inc.
John C. Garvin & Associates, Inc.
John H. Harris Associates, Inc.
John Hurt Chevrolet-Cadillac Co.
John J. MC Vicker Company, Inc.
John M. Corporation
John St. Group, Inc.
Johnnie Lee Macfadden House of Youth and Beauty, Inc.
Johnny's Supermarket, Inc.
Johnson Buick Co., Inc.
Joie Chitwood Thrill Show, Inc.
Jonas-Frank Associates Inc.
Jones & Layton, Inc.
Julien Engineering Company
Jump Center Manufacturing & Supply Company, Inc.
Jump Centers, Inc.
Jump for Health & Fun, Inc.
Juniatia Silica Company
Juvenile Shoe-Fitters, Inc.
K. C. P. Corporation
Kamkap, Inc.
Kammerer Hardware & Gifts, Inc.
Kann's Apparel, Inc.
Kansas City Kwik-Kafe Coffee Service, Inc.
Kansas City Trade Corporation
Karleton Club, Inc.
Kelly Trailer Court, Inc.
Ken Cary Company Inc.
Kenn Foundation, Inc., The
Kenneth Apartments, Inc.
Kent Custom Homes Co.
Kent Oil Service, Inc.
Kenton Petroleum Corporation
Kenton Hosiery Co., Inc.
Kett Corporation, The
Keystone Plating Corporation
Keystone Processing Corporation
King and Sipala, Inc.
Kinks Points Trident Club, Inc.
Knickerbocker N. T. S., Inc.
Knickerbocker Transport, Inc.
Knight-Waterhouse Corp.
Knopf's Inc.
Kraft Planned Homes, Inc.
Kramedas Bros., Inc.
Kulukundis Lines, Ltd.
Kurt Corporation, The
Kwik-Kafe of Boston, Inc.
Kwik-Kafe Coffee Services, Inc.
L & B, Inc.
L. C. Haller and Company, Inc.
L. C. Parker, Inc.
L and H Construction, Inc.
L H G Corporation
L & I Corp.
L. J. Nichols and Son, Inc.
L & M Service, Inc.
Lad-E, Inc.
Lafferty and McCoy Builders, Inc.
Lake Brittle Estates, Inc.
Lake Plaza, Inc.
Lakeland Development Corporation
Laminated Walls, Inc.
Lancer Research Development Corp.
Lancer Survival Corp.
Landaria Corp.
Lansare of Washington, Inc.
Larrabee Associates, Inc.
Larrabee, Ltd.
Larry Berns Productions Inc.
Lasalle Park Corporation
Latin American Industrial Development Fund, Inc.
Lawrence Jenkins and Company, Inc.
Lawrence M. Stein Company
Lease America Corporation
Lease-Back Finance Company, Inc.
Lectates & Company, Inc.
Ledtom, Inc.
(Continued on Page 7)



PROCLAMATION

(Continued From Page 6)

Lee Marine Service Company, Inc. Leeds Homes of Salisbury, Inc. Lefcourt Mortgage Company Lektophone Corporation Le Parfums Jacques Path Corp. Lew-Della Hosiery Co., Inc. Lib Steamship Corporation Lifco, Inc. Lifeguard Shelters & Equipment Co. Likins-Foster Olathe Corp. Lillian's Beauty Shoppe, Inc. Lincoln Oil Co. Linden Construction, Inc. Lindsey's, Ltd. Lindy Club, Inc. Lionel-Wadsworth Ultrasonics, Inc. Little Detroit, Inc. Little Folks School, Inc., The Little Store, Inc., The Livingston Gardens, Inc. Livingston's of Wilmington, Inc. Locust Construction Co. Logs and Lumber, Inc. Looks Limited Loomis Coal Corporation Louree Liquors, Inc. Lubin Perfumery Corporation, The Lucas Pola Tron, Inc. Lucky Citrus Producing Corporation Lungan Development and Trading Co., Ltd. Lykon Manufacturing, Inc. Lynch Engineering Co., Inc. M. A. Phillips Children's Mart, Inc. M. C. S., Inc. M. C. S. Publishing Company M. J. Merritt & Co., Inc. M-P Country Club, Inc. M. Rosenbaum & Son, Inc. MacArthur Foundation Company, Inc. Macfarlane, Incorporated Mack's Tire Service, Inc. Madaras Steel Corporation of Texas Madera Oil and Gas Company Madron, Inc. Madison Social Club Magic City Broadcasting Corporation Magna-Bond, Inc. Magnet Decorators, Inc. Magnetric Service Corporation Magnificent Motels Inc. Magnus Construction, Inc. Mainline Constructors, Inc. Maisel, Inc. Malome-Rountree, Inc. Manflo Corporation Manhattan N.T.S., Inc. Manhattan Shop, Inc. Manor Park Liquor Store, Inc. Mantle-Maris Enterprises Inc. Manufacturers Incorporated Manufacturing Instrument & Tool Corporation Mar-Trade Corporation of Delaware Marc Warren Construction Co. Marhandt Enterprises, Inc. Marine Express Corp. Marine Structures, Inc. Marksway, Inc. Marland Corporation Mario Gas & Oil, Inc. Marteau, Inc. Martin, Blanchard & Associates, Inc. Martin Consultants, Inc. Martin Motors, Inc. Martin Plastics Corporation Massey Woodworking Company, Inc. Maternity Mart-Philadelphia, Inc. Max Ludwig Company Maynard Enterprises, Inc. McKay-Davis Pharmaceutical Company, Inc. McKay Hosiery Co., Inc. Meadmont Warehouse, Inc. Meadville Keystone Sales, Inc. MEB Construction Co. Mechanical Enterprises, Inc. Media Industries, Inc. Media Marketing, Inc. Medical Resources Corporation Medical-Science Fund International, Inc. Melia Corp. Memory Magnetics Corporation Merchandise World of Youngstown, Inc. Mercuria Company, Inc. Mermaid Pools, Inc. Metallform, Inc. Metalloid Corporation Meteor Enterprises, Inc. Metropolitan Associates, Inc. Metropolitan Designed for Living, Inc. Metropolitan Realty Development Corporation Mex - Can, Inc. Mezo Pontiac Co. Inc. Mica Processing, Inc. Miecucio Service Company Mid America Natural Gas Corp. Mid Central Industries, Inc. Mid-Coastal Corp. Mid West N. T. S., Inc. Middle Atlantic Trade Show Review, Inc. Middleburg Farms, Inc. Middletown Centennial, Inc. Midwest Industrial Corporation Midwest Steamship Agency, Inc. Mile High Minerals, Inc. Miles & Timm, Inc. Milford Diner, Inc. Minerals Corporation of America Minor Cabinet Shop, Inc. Miraclean Corporation Mission Groves, Inc. Missouri Mines Inc. Mr. Fifteen, Dover, Inc. Mr. Hoy's Delicatessen, Inc. Mitchell's Motors, Inc. Mity Industries Inc. Modan Realty Co. Modern Asphalt Paving & Construction Co. Modern Screen Process, Inc. Mohawk N. T. S., Inc. Monaghan Columbus Club, Inc. Monarch Cab Co., Inc. Monarch Plastics Corporation Monetary Sales Company

PROCLAMATION

Monroe Company, The Monroe Construction Co., Inc. Monroe Supply Co., Inc. Montgomery Steel Products Corporation Moody, Hutchins & Company, Inc. Moore Real Estate Investment and Development Corp. Moral Corporation Morley Development Company, Inc. Morrow Products, Incorporated Motion Pictures, Incorporated Motor-Sport Dover, Inc. Motor-Sport Elsmere, Inc. Mount Vernon Shopping Center, Inc. Movie-Matic Photo Systems, Inc. Muriel Corporation Musical Enterprises, Inc. Mutual Pipeline Company Mutual Producers, Inc. Myers & Quigg Asphalt Co., Inc. Myers & Quigg Equipment Co., Inc. Myers & Quigg, Inc. N & B Realty Corp. N. C. Liq. Co., Inc. Naamans Little League, Inc. Namdur, Inc. Nameoki Concrete Products, Inc. Nanticoke Playgrounds, Inc. Nashua Construction Co., Inc. Nathan Oil Development Ltd. National Art League, Inc. National Atomic Industries, Inc. National Beverage Corporation National Bowling League of Chicago, Inc. National Captive Nations Committee, Inc., The National Consultants, Incorporated National Contact Lens Co. National Gas Appliance Corporation National Golden Point, Inc. National Hydrocarbons Company National Industries, Incorporated National Marinas Corporation National Marine Rental Corporation National Metallics Corporation of Delaware National Properties Inc. National Recreation Corporation National Solvents Corporation National Stereo Guild, Inc. National Tomar Corporation, The Nationwide Development Corporation Naugle Voting Machine Company Navajo Leyso Mining Co. Neighborhood Bowling Association Neptune Lines Incorporated New Castle Hundred Democratic League New Haven Amity Drug Corporation New Hope Temple Baptist Church Society New Lenox Recreation Center, Inc. New Middletown Beef Company, Inc., The New Pacific Steel Rolling Mills, Inc. New York Navigation & Chartering Company, Inc. New York Restaurant, Inc. New York-Washington C.M.E. Annual Conference, Inc. Newark Flying Associates, Inc. Newport Tankers Corporation Nicholson & Patten, Inc. 927 Corp. Ninth Street Properties Co. Nob Hill Park Apartments, Inc. Noreen Realty Corporation Norfolk Naval Supply Lines, Incorporated Normandy Oil & Gas, Inc. North American Associates East Inc. North American Oil Corporation of Delaware North Coal Company North River Construction Co., Inc. North Western Mining & Exploration Corporation Northeast Telecommunications, Inc. Northern Corporation, The Northern Homes, Inc. Northwestern Development Company, Inc. Nortrade Inc. Novi Diesel Engine, Inc. Nu-Vitality, Inc. O. C. J. Builders, Inc. O'Leno Investment Company Oakmont Cab Co. Oasis Hotel Inc. of Beersheba Israel Odex Corporation Okalta Oils Inc. Oklahoma Log Exchange, Inc. Oklahoma Woodchuck Zinc Lead Company Old Corporation, The Oliver's Stores for Men, Inc. Olympia Air Freight, Inc. Olympic Laundry and Uniform Rental, Inc. Olympic Pool Company, Inc. Olympic Transport Limited Olyphant Colliery Company Omni Fastener Corp. Omni-Flex, Inc. 142nd A. N. G. Aero Club, Inc. One Pult Corporation Operators Music, Inc. Optronics, Inc. Orbit Press, Inc. Oreclone Concentrating Corp. Oreclone International, Inc. Ores Beneficiation, Inc. Organic Materials, Inc. Oriental Tanker Corporation Orion Investment Company Orion Research Corporation Orr-Adams Construction Co. Orr Hosiery Co., Inc. Overland-Australian Oils Ltd. Overseas Air Carriers Association Overseas Communications Co., Inc. Overseas Management Services, Inc.

PROCLAMATION

Owens Southwestern Development Corporation Owsenboro Foundry Company Oxford Builders, Inc. P. A. J. Corporation P. A. R. Corp. P-C Real Estate and Development Corporation P and D Corp. P E I Systems Inc. P T I Service Corp. P. T. Rohm, Inc. Pace Productions of Delaware, Inc. Pacific Industrial Services, Inc. Package Structures, Inc. Page Rockingham Office Machines, Inc. Paladinet Bros. Inc. Palmer Suddaby Enterprises, Inc. Pan-Electronics Company, The Pan International, Ltd. Pantex Manufacturing Corporation Param Properties, Inc. Parking Associates Manhattan Co., Inc. Parklyn Pharmacy, Inc. Parkway Contracting Co. Pastal Corporation, The Pastom, Inc. Patent, Research & Development, Inc. Pathe-America Distributing Co., Inc. Paul P. Merbach and Associates, Inc. Paul V. Ames, Inc. Pauline and Henry L. Kahn Foundation, Inc. Pendula Corporation, The Peninsula Home Builders, Inc. Penn-Bell Electronics, Inc. Penn Liquors, Inc. Penn-Ohio Steel Corporation Pennon Electronics Corporation Pentagon Insurance Corporation Penzell Building & Construction Corporation Perigee, Inc. Perma-Coater, Inc. Personal Collections, Inc. Personnel Advisory Service, Inc. Personnel Research Associates, Inc. Pet Shoppe, Inc., The Peter Wheat Service Bakers, Inc. Pharm-A-Desk Corporation Phil Frates, Inc. Philadelphia Publications Corporation Photonics Corporation of America Pierce's Viewing Company Pike's View Corporation Pitney Butte Mining and Smelting Company, Inc. Pizza Plaza Realty Corp. Planoscope Corporation Plans Incorporated Plasser Railway Machinery Manufacturing Corporation Plastic-Concrete Products, Inc. Playville, Inc. Ploener Auto Parts Co. Inc. Plummer, Ltd. PM Construction Co. Pocohontas Temple, No. 60 Daughters of Improved, Beneficial and Protective Order of Elks of the World, Inc. Point Breeze Construction Co. Polarized Meat Company Polyvinyl Coating Laboratories, Inc. Portable Jon of Delaware, Inc. Portable Jon of New Jersey, Inc. Portable Jon of Philadelphia, Inc. Portable Refrigeration, Inc. Postal Constructors, Inc. Potomac Realty Co., Inc. Power Industries Inc. Pre-Engineered Homes Corporation of America Premier Pharmaceutical Corporation Presco Industries, Inc. Prescott-Lancaster Corp. President Airlines, Inc. Presidents Life Insurance Investment Company Pressure Seals, Inc. Preston Decorating Company, Inc. Priebe Hatcheries, Inc. Priebe Poultry Company Priebe & Sons, Inc. Princeton Carton Corporation Printed Circuit Equipment and Supply Corp. Process Equipment Corporation Producers Equity Corporation Product and Industrial Engineering Corp. Progressive Club 13, Inc. Projects Development, Inc. Prom, Inc. Promotional Services, Inc. Prospect Holding Corp. Purchase Credit Company Purdy, Carlisle and Dodds, Inc. Purcell Bros., Inc. Pymat Corporation Pyroxite Corporation, The Queen Quality Boot Shop Incorporated Quiddensett Golf & Country Club, Inc. QXQ Corp. R & R Supply Co. R & S Transport Company Race Nite, Inc. of Boston Radio Management Corporation Rand Brothers, Inc. Randex, Inc. Rapidex-Dox Plank Manufacturers Association Raxant Corporation Ray-Life Sign Company, Inc. Rayburn Leasing Company Raylance Corporation RC-Nehi Corporation Realty, Inc. Reardon Boats, Inc. Redneb Pipe Co. Redstone Motor Lodge, Inc. Reflecta Corporation, The Refrigeration Equipment and Repair Company Regal Park Swim Club, Inc. Reid Construction Company

PROCLAMATION

Reid & Son, Inc. Reiver's, Inc. Reliable Poultry Market, Inc. Renaire Corporation Renewal Finance Corp. Reson Electronics Corporation Research Dynamics, Inc. Research Plastic Corporation Resources Unlimited, Inc. Reylock, Inc. Rhodes Manufacturing Co., Inc. Rhodes Research Corporation Richardson Boat Company Richmond Motor Lodge, Inc. Richmond Oil & Gas Co. Ricksha, Inc. Ridgerock of America, Inc. Ridgewood Construction Co. Ritzy Cab Company River Roads Confections, Inc. Riverhead Corporation, The Riverview Amusement Co. RKM Incorporated RLA Distributing Co., Inc. Robin Hood Supply Co. Robino Development Company Rock Fabricates, Inc. Rockrose Construction, Inc. Rodney Distributors, Inc. Rolloway System, Inc. Roman Garden Motels Inc. Rosario Construction Co. Rosegina, Inc. Rosenbaum's, Inc. Rosner Corporation Ross-Richards Development Corporation Roxbury Supply, Inc. Royal Acres, Inc. Royal Continental, Inc. Royal Gains Investment, Inc. Royal Sleep Shops, Inc. Royalty Income Properties, Inc. Rudd-Melikian Distributors, Inc. Rudd-Melikian Distributors Incorporated of Illinois Rudolph Greenstreet, Inc. Rural Holding Company S. F. Dadds Custom Homes Inc. S. T. D. Corporation Sadie McCollum, Inc. Safety Shelters, Inc. Saffcraft Corporation Saintjames Maintenance Corp. St. Louis Commercial Corporation Samuel and Esther Lipman Foundation San Diego N. T. S., Inc. San Juan Real Estate Corporation San Remo Mills, Inc. Sanders Transfer Co., Inc. Sanitary Company of America Santa Rita Western Company, Inc., The Savage and Ankrom, Inc. "Schedulations", Inc. Science & Industry Publishing Corporation Science Investors, Inc. Sciencetech Corporation Scientific Engineering Laboratories, Inc. Scientific Prospecting Co., Inc. Scientific Services, Inc. Scientists, Engineers & Executives Institute Scott's Discount Enterprises, Inc. Scott Petroleum Company Sea-Treat Products, Inc. Seacoaster Development Corporation Seaford Plumbing Supply Co., Inc. Seaford Poultry Service, Inc. Security Builders, Inc. Security & Foreign Trading Inc. Security Payment Service, Inc. Selbyville Raceway Association, Inc. Self Help League, Inc. Selkin, Inc. Sell 'N Serv Dispensers, Inc. Selznick Releasing Organization of Germany, Inc. Semiconductor Research Corp. Seminole Production Company, Ltd. Seneca Gas and Oil Corporation Seven Arts Record Productions Corp. Shaeron Oil Corporation Sharp Scientific Corporation Shanahan Enterprises, Inc. Shares in America, Inc. Shawnee Road, Package Store, Inc. Sheffield Southern Steel Company, A Delaware Corporation Sherman Plastering Corporation Sherwood Investing Corporation Sherwood Realty Co. Shoe Mart of Washington, Inc. Shopping Centers Construction, Inc. Shore Vending Service Corp. Sicco Supplies Co., Inc. Sidney W. Heverin, Inc. Sierra Mobile Homes and Parks, Inc. Silico Milling Company Silicon Refractories, Inc. Silver Mark Mines, Inc. Silverbrook Food Corporation Silview Easo Station, Inc. Simonds Gardens Civic Corporation Simplex Precast Industries, Inc. Sincere Agency Associates, Inc. Sirvalco Systems Corporation Site-Fab, Inc. Six Fifty Coral Way, Inc. Six Percent Loan Plan, Inc. Ski and Recreation Corporation Skiatron, Incorporated Skytell, Inc. Slag Processors, Inc. Smithdale Industries, Inc. Smyrna Times, Incorporated, The Sno-Go, Inc. Snyder's Men's Shop Co. Society of Theatre Arts, The Solar Supply Co., Inc. Solar Systems, Inc. Solid Propellants & Fuels Corporation Solidair Foam Products, Inc. Solvent Service, Inc. Sonny Downs, Inc. Sonwell Industries, Inc. Souder Hosiery Co., Inc. South American Metals and Mining, Inc. South Bay Industries, Inc. South Coal Company

PROCLAMATION

Southeast Aircraft Corp. Southeast Securities Corporation Southeastern Supply Corporation Southern Associated Engineers, Inc. of Florida Southern Cross Steel & Mining Company Southern Drying Corporation Southern Motels, Inc. Southern Restaurants, Inc. Southern Wholesalers, Inc. Southwest N. T. S., Inc. Southwestern Land and Development Corp. Space Age Electronics Corporation Space Age Specialists, Inc. Spacetratics, Incorporated Span America Boat Company, Inc. Spartan Oil and Gas Company, Inc. Special Devices, Inc. Specific Instruments, Inc. Specs Inc. Spot, Inc. The Spragg Enterprises, Inc. Spring Hill Stables, Inc. Spring Lake, Inc. Sprueglen Maintenance, Inc. Staff Engineering, Inc. Standard Electronics Research Corporation Standard Magnetite Company Stanley Ross Corporation Star Cab Association, Inc. Star Distributors, Inc. Star-Light, Inc. Star Oil Company, Inc. Stat Shell Homes, Inc. Stardust Studios, Inc. Stat Instrument Gears, Inc. State Realty Corporation "Stay-On" System, Inc. Steelman Construction Co. Stephens Building Co. Steven Corporation Stoltz Realty Co. Stone Builders, Inc. Stone's Hotel, Inc. Stone House Inc. Stone Realty Company Stonehaven Civic Association, Inc. Storm King of Delaware, Inc. Strata-Log Company, Inc. Styles, Inc. Suburban Medical Clinic, Inc. Suburban Spray, Inc. Sudam Trading Corporation Sunny-Dell Acres Inc. Sunnyside, Inc. Sunset Contractors, Inc. Sunshine Construction Company, Inc. Super-Chek International Corporation Super Vending Corporation Superdynamics, Incorporated Superior Airlines, Inc. Suxsex Catv, Inc. Sweigart Protection Company, Inc. Swiss Valet National Corporation Sylvan-Cheryl Apartments, Inc. T-Bowl, Auburn Inc. T. W. Knowles, Inc. Tagli Corporation Tankers & Tramps Corp. Tara Land & Development Company, Inc. Tastee-Freez of Dimarva, Inc. Tastee-Freez Mobile Units, Inc. Tax Exempt Bond Fund, Inc., The Technical Associates, Inc. Technical Equity Corporation Technical Services Co., Inc. Technical Training Corporation Techno-Lectric Industries Inc. Technological Packaging International, Limited Tejas Oil and Gas Company Tele-Communications Corporation Tele-Smoke Corp. Teleshop Enterprises, Inc. Telford and Macleod Co. Tennessee Terminal, Inc. Terence Hosiery Corporation Termitox, Inc. Terry Towing, Inc. Texas International Sulphur Co. Texas Trade Show Review, Inc. Texas Turfing Co. Theatre Development and Management Co., Inc. Thermo-Chem Corporation Thermodyne Electronics, Inc. Therodyne Corporation Thirty Eight Inc. 39 Realty, Inc. Thomas-Bonnie Building Corporation Thos. F. Kelleher Company Thos. P. Pease Incorporated 3-D Windows, Incorporated Tide & Trail Club Tiglia, Inc. Timewell Automation, Inc. Tire Center, Inc., The Toast-T-Nuts Inc. Tobin Craft, Inc. Tokay Liquors, Incorporated Tolvision (Cal.), Inc. Tomcoolum, Inc. Tomed Venetian Blind Company Tomled, Inc. Tompas, Inc. Toronto Brothers, Inc. Tours & Tickets, Inc. Tramp Shipping & Oil Transportation Corporation Trans-American Communication Corporation, The Trans-International Power Co. Trans-Tech Systems, Inc. Transplans, Inc. Transport Clearings of Metropolitan New York, Inc. Transport Clearings of Philadelphia, Inc. Transportation International, Inc. Transportation & Trading Associates, Inc. Transworld Investing Corporation Transworld Projects Corporation Travelers Club, Inc. Trego Bros., Inc. Tri-Bullion Corporation Tri-County Construction Co. Tri-Leasing Funds, Inc. Tri-State Equipment Company

PROCLAMATION

Incorporated Tri-States N. T. S., Inc. Trident Enterprises, Inc. Trident, Inc. Trinity Products Incorporated Trip-L-Seal, Inc. Triumph Truck Leasing Corporation Tropical Caribbean Cruises, Inc. Tropical Motor Lodge, Inc. Trojan Electric Company Truck Center, Inc. Truly Company, The TSA Transcontinental, Inc. Tsaganos, Inc. Tubular Service Central Division, Inc. Tucson Instrument Corporation Tulsa Hosiery Corporation Turasonic Communications Corporation Turner Investment Corporation TV Movie Club, Inc. TV Review, Inc. Twelfth and Olive, Inc. 22 West Madison Corporation Twin City Union Labor Cooperative Association U. S. I. E. E., Inc. U. S. Scientific and Development Corp. Unified Service Investing Corporation Union Petrochemical Company Unit Masonry Equipment, Inc. Unit Packaging & Research Corp. United Aluminum Products Company United Components Inc. of New England United Land Development and Investment Co. United Oil Corporation United Securities Company of Omaha United States Arab-Asian Institute, Inc., The United States Butyl Corporation United States Etching and Chemical Corporation United States Fibre Corporation United States Milling and Minerals Corporation United States Minerals Corporation United States Product Development Company United Technical Service International Corporation United Turf Express, Inc. United Variable Annuity Funds, Inc. Universal Aero-Tech Corporation Universal Engineering Corporation Universal Health, Incorporated Universal Industries, Inc. University, Diner, Inc. University Villas, Inc. Urban Transportation & Development Company Utah Mud, Inc. Utility Corporation, The Vacuum Baked Products, Inc. Val-U-Homes Corporation of Delaware Valet Washette, Inc. Valley Plaza Drug Corporation Valleybrook Realty Co. Van Dyke Fruit Corporation Van Sickle Associates International, Inc. Vanderbilt Automotive Centers, Inc. Vanship Corporation Vega-Vita Products Corporation Velo Tech Corporation Vendrite Corporation, The Veneer-Plastics Research Corporation Ventures of America, Inc. Verified Distribution Company Vernon Apartments, Incorporated Vernon Towers Agency, Inc. Veterinarian Dental Devices, Inc. Vic Tanny Enterprises, Inc. Victor Electronics, Inc. Video International Productions Inc. Viking Heating Company, Inc. Village National Corp. Virgil Brannon & Son, Inc. Virus Laboratory of Delaware, Inc. W. & E. Development and Investment Corporation W. H. Bear, Inc. W. J. Holdsworth, Inc. W. R. Chance & Associates, Inc. Waimea Ranch Hotel, Inc. Wallace & Warner Realty Company Inc. Walnut Room, Inc. Walter E. Allen, Inc. Walter E. Bothe Foods, Inc. Walter E. Powell, Inc. Walter J. Scott Democratic Association Walter U. Artis, Inc. Ward-Garcia Corporation Warren Keystone Sales, Inc. Wash-O-Mat, Inc. Washington Airways, Inc. Washington Industrial Research Corporation Water-Sportsmen International, Inc. Waterford Shopping Center Drug Corporation Waterlevel Corporation Weer Construction Co. Wel-Tron Industries, Inc. Welch Construction Co., Inc. Welch Oil Co. Wellington Packaging Machinery Inc. Wesneb Oil Company West African Industrial Corp. West End Liquors, Inc. Western C. P. I., Inc. Western Oil Salvage Corporation Westlake Corp. Westphale Financial & Shipping Corporation Wheel, Inc. The White Fathers Film Foundation, Inc., The Wicklow Corporation, The Wilbur-Rogers Fourteenth Corporation, The

PROCLAMATION

Wilbur-Rogers Indianapolis Corporation, The Wilbur-Rogers Louisville Corporation, The Wilbur-Rogers New Bedford Corporation, The Wilbur-Rogers Northland Corporation, The Wiles Construction Corporation Will I. Lewis Drilling Company Wm. H. Barlow Trucking Co., Inc. William J. Kelly, Inc. William Jaffe Co., Inc. Wilmington Tire Service, Inc. Wilmington Wall Paper Co., Inc. Wilmington Waste Trade Merchants Association, Inc. Wilmington York Stores, Inc. Wilpez Investments, Inc. Wilson Bilt Homes, Inc. Wilson Line of Florida, Inc. Wilson Line of New York, Inc. Wilson Line of Pennsylvania, Inc. Wilson Steamship Corporation Wilton Corporation Winston Financial Corporation Wise Owl Distributors, Inc. Wisner Equipment, Inc. Wits, Inc. Woodland Beach Concessions, Inc. World Financial Corporation World Wide Chariot Association, Inc. World-Wide Distributing Corporation Wunderlich & Bergman Construction Co., Inc. Wynwood Corporation Xim Corporation Yoo Hoo Franchise Corp. York Beach, Inc. York Restaurant, Inc. Young Veterans Club, The Zacari, Ltd. Zelle Building Corporation Zeus Aviation, Inc. Zeus Aviation, Inc., South-East Zim's, Inc. Zyro Corporation IN TESTIMONY WHEREOF, I, ELBERT N. CARVEL, Governor of the State of Delaware, have hereunto set my hand and caused the Great Seal to be hereunto affixed this eighteenth day of January, in the year of our Lord one thousand nine hundred and sixty-five, and of the Independence of the United States of America, the one hundred and eighty-ninth. By the Governor: ELBERT N. CARVEL Elisha C. Dukes Secretary of State

lands ecology and conservation, water resources and weather problems, irrigation, agricultural business management, poultry, light horses, dairy, fruit, vegetables and 4-H. All Farm and Home Week sessions are open to the public free of charge.

Sussex Fatal Accident Review

The press has reported suggestions that perhaps the increase of auto fatalities in Sussex County could be associated with the increase in paved roads in Sussex County.

A question was raised to the effect that perhaps lower design standards in pavement widths and sharper curves might be a contributing factor.

This has caused us to carefully review the police accident reports of the 38 fatalities in Sussex. These are some of our findings:

Of the 38 fatalities: 1. All but 3 occurred on roads which were surfaced prior to the start of the dirt road program in 1955—So the surfacing program must be ruled out as a contributing factor in 35 of the 38. Of the remaining 3, one driver was under the influence, another was driving 70 M.P.H. and had been drinking. The third was driving at excessive speed, had 4 people on the front seat and had been drinking prior to the accident.

We can find nothing that indicates that the design of these roads has contributed to the fatality rate.

Other facts may be of interest. Of the 38 fatalities: Alcohol was a factor in 18. Pedestrians were the victims in 9. Two of these were three years old or younger; three were 76 years or older.

Improper procedure at intersections caused 6. Racing or other misuse of vehicle caused 4. Excessive speed was involved in 8.

Physical condition of driver, lack of sleep, etc., caused 5. Farm vehicles involved in 2. Vehicle condition caused 1. In all but 5 of the fatalities, engineering has been completely eliminated as a factor. These five are being reviewed in the field to determine if any improvements are indicated.

V.F.W. National Commander To Visit Delaware

John A. Jenkins, Commander-in-Chief of the Veterans of Foreign Wars, will make a flying visit to Delaware this Friday according to State Commander Clenfin J. Nevin.

The veterans leader will leave Guantanamo Bay, Cuba, Friday morning and will arrive at Greater Wilmington Airport between 2:45 and 3:30 that afternoon. At Wilmington he will be met by Commander Nevin and members of his staff and, if time permits, will be taken on a tour of Veterans Administration facilities.

Later in the day, Commander Jenkins will be taken to Dover where he will be the guest of honor at a banquet at the Holiday Inn that evening. Delaware's new chief executive, Governor Charles L. Terry, Jr., heads the list of governmental and civic leaders who will join with officers and members of the Department of Delaware, Veterans of Foreign Wars, in welcoming Commander Jenkins.

Inasmuch as Commander Jenkins will be coming to Delaware from Guantanamo Bay, it is expected that at least part of his address at Friday's evening banquet will be devoted to the Cuban situation. It is most likely that he will also speak out strongly against the proposed closing down by the Veterans Administration of 17 VA Regional Offices including the Regional Office at Brack-Ex, Delaware. (Members of Delaware's Congressional Delegation, former Governor Elbert N. Carvel, Wilmington Mayor John Babiarz, State V.F.W. Commander Nevin and the leaders of other Delaware Veterans groups have all protested strongly to Veterans Administrator William Driver against the proposed closing of Delaware's only VA office.)

Commander Jenkins will conclude his brief visit to Delaware early Saturday morning resuming his flying tour with departure from Philadelphia International Airport at 9:15 a.m.

Cahalls Return From Holland

Mr. and Mrs. William Cahall, of Wilmington, returned this week from Holland where the former had been stationed by the Hercules Corporation for many months.

The Cahalls, who returned by ship, will stay in the Hercules guest house until they can find an apartment for a year.

Cahall, a Harrington native, is the brother of Claude Cahall.

Home Wk. Session To Explain "Why Wear Clothes"

People wear clothes for more reasons than keep warm or obey the law, psychologists have found and though these reasons may prevent us from abandoning clothing altogether, the reasons we dress as we do are much more complex, according to Miss Mary Wines, associate professor of clothing at the University of Delaware.

Miss Wines says people actually dress the way they do for such personal reasons as aesthetic expression, to satisfy the human needs for approval and to identify themselves in various roles. Socially, she says, people choose their clothing to communicate to others such things as occupation, wealth, age, sex and even mood. "We understand others and ourselves more fully when we recognize and appreciate clothing as a medium of personal and social expression", Miss Wines says.

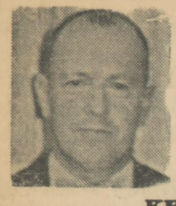
Miss Wines and Miss Janet Reed, extension clothing and textile specialist at the University, assisted by several models, will discuss the subtle meanings of "Why We Wear Clothes" at one of the featured programs at Farm and Home Week at the University of Delaware. The session, part of the annual three-day Farm and Home Week observance, will begin at 1:15 p.m. Thursday, Feb. 11, in the auditorium of Agricultural Hall on the University campus.

Other Farm and Home Week program features for women include "Be Your Best Physical Self" with Dr. Marjorie Conrad, a Wilmington physician, and Miss Coral Morris, extension home management specialist, at 9:45 a.m. Tues., Feb. 9; "Take A Look At Your Personal Appearance" with Mrs. Jo Adair Hamilton, Mrs. Delaware of 1963, at 1:15 p.m. Tues., Feb. 9, and "Grooming the Inner Self" with Dorothy Emerson, leadership and citizenship consultant to the National 4-H Club Foundation, at 9:45 a.m. Thurs., Feb. 11. All home economics programs will be in the Agricultural Hall auditorium.

"Gardening Indoors" will be one of the featured Farm and Home Week programs on Wed., Feb. 10. Mrs. Ernesta D. Ballard, executive secretary of the Pennsylvania Horticultural Society, will show slides and discuss house plants and various ways they can be used as decorating accessories in the home. The program will begin at 1:30 p.m. in room 246 of Agricultural Hall.

Other Farm and Home Week sessions will feature programs on community beautification, wild-





# SPORTS

KEITH S. BURGESS — Sports Editor

## Tribbitt, Smith Spark Lion Matmen to Victory

Harrington High's wrestling team upped its seasonal record to 3-2 with a narrow (26-22) victory on the Dover Air High mat last week. The Lions appeared to be dissipated and listless when their performances were compared with their inspired showing against mighty Georgetown, the last time we caught the Lions' act. Harrington won five bouts against the Sussex Countians in twelve weight classes and won only five of eleven against a Dover Air Falcon team which is definitely not in Georgetown's class. The rough part of the schedule is ahead with Wicomico of Salisbury here tonight in a return match followed by settos with Milford, Easton and Delmar before the start of the tournament season. If Harrington can get "up" again as they did against Georgetown we have an excellent chance against any of the quartet of dual meet opponents.

Terry Donovan won the first match by forfeit as Dover Air did not put a 95 pounder on the mat. The five points picked up here were to be very important in the final score.

Allan Greenly scored a quick takedown in the 103 pound class and went on to score a fall in round two.

David Greenly won a narrow 3-2 decision over Shawn to give Harrington a 13-0 lead.

A drought set in at this point and the Falcons won five straight matches to send the Lions reeling to the ropes.

Steven Welch was beaten 2-0 although he had his red-haired rival "wore to a frazzle" at the end of the 120 pound war.

Jim Cain dropped a 11-1 decision to Carl Carroll, a grappler who was third in an All-Europe tournament, while at an air base in Frankfurt, Germany two years ago. However, Cain nosed out Carroll in overtime for the Henlopen Conference championship last season and then decided Carroll 4-0 to go on and win the Independent Conference 120 pound title at St. Andrews School, Middletown. It appears Carroll has improved while Cain has retrogressed, probably due to the fact that he no longer can wrestle the tough George Bonniwell in practice each night as he did in 1964.

Bill Harcum lost a second one-point decision at 133 pounds. The score was tied up 4-4 at the cessation of hostilities but his rival had enough extra riding time, or time on top of Harcum to get another point. Harcum has three victories in this his first try at the sport.

Mike Kohel (138) was decided 3-0 and Mike Bakota was pinned by a Falcon, who outweighed the Lion by 12 pounds.

Trailing 17-13 at this point the Lions had to get winning performances from both Smith and Tribbitt or accept defeat.

Smith at 154 pounds had trouble in the first period with his superbly-built opponent. For most of round two he couldn't get loose either but near the end of the two-minute session he got loose twice and rolled the Falcon over to score his first pin of the season and bring his record to 2-2-1.

Tribbitt 0-3 going into the 165 pound clash reversed his opponent just before the end of round two to take a 2-0 lead. The Falcon had the better of things in the third period but couldn't get loose to tie things up as Tribbitt grimly and gamely held on to win his first match of the campaign.

With Lou Starkey coming on to the mat Harrington fans relaxed and enjoyed themselves hugely as Starkey toyed with his adversary briefly and then glued him to the mat in 1 minute and 49 seconds.

Victory was assured although Ed Wheatley was vanquished in the Unlimited Class. The Lion had his foe in trouble but couldn't finish him off. Wheatley doesn't do badly at all considering he is one of the most experienced grapplers around.

Wicomico come here tonight with a team that nosed the Lions in their December opener. Their 180 pounder, Bond, is reportedly a two-time Florida state champion. Starkey pinned Bond in 55 seconds and the Indian will be seeking revenge.

**Of Local Interest**  
The Improvement Club of Vernon has resumed their meetings Monday evenings at 7:30. Anyone with a weight problem interested in attending the meetings may call 398-3600 or 398-3649.

**BE WISE — ADVERTISE SHOP AND SWAP IN THE WANT ADE**

## Felton Cage Win Streak at 23

Joe Kern's Felton High Green Devils basketball team won its twenty-third straight contest with the greatest of ease at Millsboro Friday night.

The host Blue Devils were out-forked to the tune of 28-10 in the first quarter and should have quit right there as the Green Devils led at halftime 48-20 on the way to a ridiculously easy 82-45 victory. Ten tormentors saw action for the winners and all hit the scoring column.

Jim Blades led all scorers with 20 points. Bill Barr was close behind with 18. Also in double figures was Dave Wood with 11 tallies.

Felton's last defeat was a close loss to Rehoboth in the championship playoff game at Selbyville in March of 1963. Bridgeville is the only club in sight with a fair chance to upset F.H.S. The Mustangs would have to be hot on a night when Felton was cold. Bridgeville has plenty of height and a good playmaker in Ron Zavavky. The Sussex Countians have reached their potential only once this year when they racked up 92 points against John M. Clayton. Therefore, on consistency and a balanced attack it looks like Felton again all the way.

Rehoboth stayed close to the Lions for one period but were out of contention by halftime when they trailed 30-15. The Lions used every available player as a mild Rehoboth rally cut a 21 point deficit to 15 in the fourth quarter.

Harrington used a balanced attack led by John Greenhaugh (13), Glenn Smith (11), Sam Knox (10) and Richard Black (9).

Rehoboth trailed by only two field goals but could not come close to equalling the Lions' marksmanship from the foul line. H.H.S. hit 17 of 24 tries to the Beachboys' 6-for-21. Dean Manges, whom the Lions hope will star at halfback here this fall, sank four free throws in as many attempts.

Team	G	F	P
Felton	9	2	20
Blades	5	1	11
Wood	8	2	18
Barr	4	1	9
Clark	4	0	8
Dill	2	0	4
French	1	0	2
Hoffner	1	2	4
Freer	2	0	4
Reible	1	0	2
Sheets	3	7	8
Totals	37	8	82

## Biddy League Basketball Starts

The American Legion Biddy Basketball League started another season of competition Saturday afternoon at the Harrington High Field House. Due to a smaller turnout than in previous years only four teams were formed.

In opening contests Tom Young's Globetrotters nosed Bill Minner's Warriors 26-22 and Bob Jester's Celtics were the winners over Ted Layton's Hawks by a score of 28-8.

This league offers an opportunity for boys 9 to 12 to get a head start in the complex game that is basketball. Most good basketball players are those who took up the game early and stayed with it for several years. Back in the writer's time many lads did not get started in the cage sport until they were sophomores. In many instances that proved to be too late.

Bill Minner, Warriors — Mark Dalton, Jim Calloway, Mike Davis, Allan Young, Charles Brown, Bob White, Don Moore, Kim Hitchens, Mike Wilson.

Tom Young, Globetrotters — Roger Klapp, Chris Neilsen, Charles Cohee, David Halliburton, Les Pardee, Robin Callahan, Frank O'Neal, Tom Clarke, Adam Hurd.

Ted Layton, Hawks — Jack Warrington, Bill Brode, David Newnom, Billy Walls, John Black, Doug Wilson, Norris Winebrenner, Mark Hurd, Jack Parker, Bob Coleman.

Bob Jester, Celtics — Harold Jump, Charles Hurd, Dallas Marsan, Spike Adams, Gary Harrington, Bob Legates, Ricky Wilson, John Curtis, Bob Everline, Ronnie Everline.

## STATE FARM MUTUAL ADDS TO STAFF

Edith P. Farrow, daughter of Mr. and Mrs. Reynolds Postles of RFD 1, Frederica, has joined the staff of the Dover office of the State Farm Mutual Automobile Insurance Co.

A native of Delaware, she graduated from Felton High School. She is married to Francis Lowell Farrow, son of Mr. and Mrs. Joe Farrow, of Viola.

## Kent General Hospital News

**Jan. 20 to Jan. 27**  
ADMISSIONS  
William Hubbard, Harrington  
Doris Hollinger, Felton  
Beverly Edwards, Felton  
DISCHARGES  
Charles Hunt  
Elva Thomas  
Doris Durant  
Francis Conner

## Lions Best Rehoboth, 55-40

Rehoboth's Seahawk cage five came to Harrington Friday night and became the Lions' fifth victim of the year to the tune of 55-40. The locals are now finished with the Eastern Division of the Henlopen Conference for this season and show a 5-1 log. Milton edged Harrington by two points last week to account for the one loss.

The rest of the season will be spent in home-and-home encounters with Dover Air, Felton, Greenwood, Bridgeville and Delmar. This side of the conference has all the power this winter. To illustrate, Lord Baltimore is leading the Eastern Division with only a 500 mark, based on victories over Greenwood, Delmar and Dover Air, and losses to Harrington, Felton and Bridgeville.

No other club from the other side could break even over here, while Felton and Bridgeville are 6-0, followed closely by Harrington and Greenwood with 5-1. So it looks like Jim Hawpe and Co. have their work cut out for them from here on in. Tonight the Lions will face the awesome Felton Green Devils at Felton. The horned ones have demonstrated that they can surpass the century mark almost any time they choose. The Lions are going to give out with all they've got and hope to equal their showing at Felton last season when they narrowly missed scoring a tremendous upset.

Rehoboth stayed close to the Lions for one period but were out of contention by halftime when they trailed 30-15. The Lions used every available player as a mild Rehoboth rally cut a 21 point deficit to 15 in the fourth quarter.

Harrington used a balanced attack led by John Greenhaugh (13), Glenn Smith (11), Sam Knox (10) and Richard Black (9).

Rehoboth trailed by only two field goals but could not come close to equalling the Lions' marksmanship from the foul line. H.H.S. hit 17 of 24 tries to the Beachboys' 6-for-21. Dean Manges, whom the Lions hope will star at halfback here this fall, sank four free throws in as many attempts.

Team	G	F	P
Rehoboth	3	0	6
Savage	1	0	2
Lehman	1	0	2
Bagnacani	1	0	2
Downes	1	1	3
Triffillis	3	2	8
Crosby	0	1	1
Shockley	3	2	8
Totals	17	6	40

Team	G	F	P
Harrington	3	5	11
Smith	2	0	4
Myer	1	0	2
Bitler	1	0	2
Knox	4	2	10
Black	3	3	9
Hatfield	0	0	0
Brode	0	0	0
Wamsley	0	0	0
Greenhaugh	5	3	13
Manges	1	4	6
Totals	19	17	55

Rehoboth	9	6	8	17-40
Harrington	12	18	14	11-55

## Late Church Bowling League

Week of Jan. 22

### TEAM STANDINGS

TEAM	W	L
Calvary VI	19	9
St. John I	18	10
St. Stephen's	17	11
Calvary I	16	12
Avenue II	15	13
Lutheran II	15	13
St. Bernadette's	15	13
Asbury	14	14
Lutheran III	12	16
Trinity	11	17
St. John II	10	18
Baptist	6	22

### INDIVIDUAL HIGH GAMES WOMEN (160 or better)

M. Steen	189 - 160
M. Cabbage	164 - 180
L. Redden	170
S. Yeiser	168
G. Minner	172
L. Young	163
J. Livingood	161
J. Evans	160
E. Lurwick	161

### MEN (190 or better)

A. Behles	203
A. Strahle	196
P. Desmond	195
H. Cabbage	196
K. Hopkins	198
D. Downes	197
S. Steen	193
B. Stokes	193

### Week of Jan. 20

C. Thomas	194
B. L. Taylor	161

## Board of Health Clinics

**Cancer Detection Services**  
Feb. 11 and 18—Dover, Kent County Health Unit, State Health Building, Federal & Water Sts. Call 734-5711, ext. 404.  
Feb. 19 — Smyrna, Candee Bldg., Welfare Home. Call 643-7088.  
Feb. 24 — Dover, Kent County Health Unit, State Health Bldg., Federal & Water Sts. Call 734-5711, ext. 404.  
Feb. 25 — Milford, Health Unit, Old Post Office Building, 121 S. Walnut St. Call 422-4985.

## Greenwood Beats Milton, 71-64

Greenwood High's Foresters shot at a near 100-points-a-game clip in the fourth quarter to come from behind and defeat the invading Milton High Warriors on Friday night. The game was a carbon copy of Milton's defeat of Harrington three days earlier.

Greenwood trailed in field goals 27-25 but had an excellent night from the free throw mark with 21 points in 31 attempts. Milton had made a bushel of free throws at Harrington but made only 10 of 23 at Greenwood.

Game scoring leader, Drew Clendaniel, had 10 of his 22 points on foul shots as he missed only two of them. Ron Breeding and Duane Anthony divided 32 points equally while Dave Henry added 13 more.

Bill Cordrey, a 34 point scorer at Harrington, led the Warriors with 19 and missed 7 of 12 free throws.

Team	G	F	P
Milton	7	5	19
Cordrey	3	2	8
Hudson	6	0	12
Brown	4	0	8
Lofland	1	1	3
Behler	6	2	14
Lockwood	2	10	64
Totals	27	10	64

Team	G	F	P
Greenwood	4	5	13
Henry	6	10	22
Clendaniel	7	2	16
Schulze	2	0	4
Allen	0	0	0
Breeding	6	4	16
Totals	25	21	71

Milton	14	20	15	64
Greenwood	9	20	15	71

## "YOUR CHEATIN' HEART" At Reese Six Days; Feb. 3-8

One may hear these days, "There's big doings at Movie Center". With the policy of two big attractions on a single bill, plus the constant arrival of the new big hit product from Hollywood, Delaware and Maryland theatre fans are visiting the Reese Theatre more than ever.

Life Magazine says, "The Americanization of Emily" starring James Garner, Julie Andrews, and Melvyn Douglas, is "One of the Best". "Enchanting" Julie Andrews is absolutely enchanting. Garner in top form," says Newsweek. With "Emily" heading the bill this Fri.-Sat.-Sun.-Mon., Jan. 29-30-31 & Feb. 1, with the sensational "Atragon", the most fantastic science shocker ever filmed as the second feature, it looks as if great entertainment is in store.

Never in Movie Center history has there been an opportunity to present a picture so appealing to everybody as MGM's "Your Cheatin' Heart", the amazing story of America's greatest country singer, the immortal Hank Williams. Hitting the high spots all over the country, "Your Cheatin' Heart" will play the Reese Theatre six days, Wed.-Thurs-Fri.-Sat.-Sun.-Mon., Feb. 3-4-5-6-7-8 with two shows each evening weekdays and Sunday. Continuous showing Saturday, 2:30 p.m. till 12. Preston Foster in "The Time Travelers" is the companion picture.

## UNIV. ENDOWMENT (Continued from Page 1)

Starting in 1915, she sought out areas in which improvement was needed, and led campaigns to make the necessary changes. Her first project was formation of the Juvenile Court Association, later known as the Family Court Association, whose main objective was the betterment of both the judicial and staff services of the court.

By 1923, she had a Family Court Bill drafted and introduced in the General Assembly. Fifteen years and seven Assembly sessions later, the Family Court was established by law. During the intervening years, Mrs. du Pont ignored repeated disappointments in the fate of the measure, and pressed continuously for its passage.

Mrs. du Pont was active in the establishment of the Detention

## Lions Club News

By Al Price

The Harrington Lions Club met last Monday evening at the Wonder R Restaurant with President Alfred G. B. Mann, presiding.

The club was honored with a visitation from the Milford Lions Club being Lions Buck Brown, Gil Griffin, Bill Farlow and Fred Brown.

President Mann announced that our annual "Farmers Night" will be February 22 and each member is responsible for bringing a farmer as their guest. Lion John Curtis is in charge of the program for the evening.

First vice president Elwood Wright introduced Lion Donald Bliss from the Silvercraft Lions Club, of Wilmington, chairman of District 22-D Sight Conservation Committee and Trustee of the Delaware Valley Eye Bank, who addressed the club membership on the growth and progress of the Eye Bank; a non-profit organization that takes pledges from individuals wishing to donate their eyes for a cornea transplant after death, thus restoring sight to a blind person. He told of a number of successful eye transplant operations throughout our state. The Eye Bank is supported by the Lions Clubs of Delaware.

The club voted to donate \$200 to the American Field Services, an organization devoted to the exchange student program throughout the country. A local chapter is being formulated in the Harrington area.

## Felton School Notes

**MENU — FEB. 1-5**  
MONDAY — Frankfurter on roll, baked beans or sauerkraut, milk, pineapple chunks.

TUESDAY — Oven fried chicken, whipped potatoes and brown gravy, milk, bread and butter, spiced cherries.

WEDNESDAY — Chili-concarne, tossed salad, milk, bread and butter, applesauce.

THURSDAY — Beef vegetable soup, cheese sandwich, milk, peach and pear slices.

FRIDAY — Baked fish fillet, stewed tomatoes, milk, bread and butter, fruit jello.

## WALK-IN CLINIC (Continued from Page 1)

tric treatment services are being established throughout the Nation—Kings County Psychiatric Hospital in New York, for example, has had a Walk-in Clinic in successful operation for some time. Boston State Hospital in Massachusetts recently won the APA Hospital Achievement Award for its Home Treatment Service. Dr. Lieberman was on the APA Committee which granted this award.

Dr. Lieberman described the program for Delaware State Hospital as being "a means of meeting the emergency requirements of people who are in acute emotional distress. They and their families will know there is a place where they can receive immediate attention."

All citizens of the state will be eligible to use the walk-in service but the home treatment will necessarily be limited to New Castle County.

## BIRTHS

**Milford Memorial Hospital**  
Jan. 21:  
Mr. and Mrs. James Hanzer, Georgetown, girl.  
Mr. and Mrs. Lawrence Joseph, Bridgeville, boy.

Jan. 22:  
Mr. and Mrs. C. C. Maynard, Marydel, girl.  
Mr. and Mrs. Thomas Brown, Harrington, girl.  
Mr. and Mrs. William Coady, Denton, girl.

Jan. 23:  
Mr. and Mrs. William Banks, Bridgeville, boy.  
Jan. 25:  
Mr. and Mrs. Monty Barney, Harrington, boy.

Jan. 26:  
Mr. and Mrs. Ronald Wyatt, Sr., Milton, boy.  
Jan. 27:  
Mr. and Mrs. Donald Coulbourn, Bridgeville, boy.

## U. S. ARMY NURSE (Continued from Page 1)

est young people in nursing careers. To some extent they alleviate the shortage of Army Nurse Corps officers, and add to the nation's resources of nurse power.

Today, as yesterday, Army nurses are adding to the dynamic history of nursing at the com-

Home, close ally of the Family Court system, and was the prime mover in the building of the Bridge House.

The state's adult offenders also were helped by Mrs. du Pont, who was one of the organizers of the Prisoners Aid Society in 1920. The club was honored with a visitation from the Milford Lions Club being Lions Buck Brown, Gil Griffin, Bill Farlow and Fred Brown.

President Mann announced that our annual "Farmers Night" will be February 22 and each member is responsible for bringing a farmer as their guest. Lion John Curtis is in charge of the program for the evening.

First vice president Elwood Wright introduced Lion Donald Bliss from the Silvercraft Lions Club, of Wilmington, chairman of District 22-D Sight Conservation Committee and Trustee of the Delaware Valley Eye Bank, who addressed the club membership on the growth and progress of the Eye Bank; a non-profit organization that takes pledges from individuals wishing to donate their eyes for a cornea transplant after death, thus restoring sight to a blind person. He told of a number of successful eye transplant operations throughout our state. The Eye Bank is supported by the Lions Clubs of Delaware.

The club voted to donate \$200 to the American Field Services, an organization devoted to the exchange student program throughout the country. A local chapter is being formulated in the Harrington area.

## FARM SALES UP (Continued from Page 1)

Soybeans continue to be the top cash crop with more than 9.5 million dollars in sales. Corn is next with 7.5 million dollars followed by greenhouse and nursery crops 3.8 million dollars and potatoes 3.2 million dollars.

The state's broiler income increased \$5,149,000 in 1963 over 1962, accounting for 51.6 per cent of all farm income. Fluid milk sales amounted to 8.2 million dollars, eggs 4.9 million dollars, cattle 2.4 million dollars, hogs 1.7 million dollars and sheep slightly less than 1 million dollars.

Sussex County continues to be the leading agricultural county in the state with 84.5 million dollars in farm income compared with 21.9 million dollars for Kent County and 13.2 million dollars for New Castle County. The heavy concentration of broilers in Sussex County accounts for most of this difference. Ninety-five per cent of the state's 62 million dollar broiler industry is concentrated in Sussex County.

## CROSSROADS DRIVE-IN ROADSIDE THEATRE SNACKBAR DENTON, MD. Rt. 401 TEL. 497-2727

\*\*\*\*\*  
CLOSED  
For Alterations  
Watch For Reopening

## WALK-IN CLINIC (Continued from Page 1)

tric treatment services are being established throughout the Nation—Kings County Psychiatric Hospital in New York, for example, has had a Walk-in Clinic in successful operation for some time. Boston State Hospital in Massachusetts recently won the APA Hospital Achievement Award for its Home Treatment Service. Dr. Lieberman was on the APA Committee which granted this award.