

Tribbitt Honored At Inaugural Ball

An unexpected crush of humanity Tuesday night descended on Dover Downs to welcome Gov. Sherman W. Tribbitt as Delaware's 66th chief executive.

Leon De Valinger, chairman of the inauguration committee, had estimated that no more than 2,000 persons would attend the governor's inaugural ball at Dover Downs.

He missed it by several thousand. Adding to the crowd were hundreds of Republicans who had trained their sights on congratulating Lt. Gov. Eugene Bookhammer, former Gov. Russell W. Peterson's running mate who survived the Tribbitt victory at the polls last Nov. 7th.

The huge Great Hall on Dover Downs' fourth level, opened especially for the occasion, was a mass of humanity as thousands of well-wishers attempted to reach Tribbitt and his first lady, Jeanne, to offer personal congratulations.

The dining hall was packed. The hat check girls were swamped. Security officials declined to estimate the crowd except to say that it did not appear to exceed the all-time record of 8,300 who showed up when the race track first opened its doors six years ago.

A check of the monitors of the tracks closed circuit television system in security headquarters showed thousands of persons dressed to the teeth for the occasion on the first and fourth levels, a mob in the dining area, but few on the second and third levels where most paramutal betting is usually conducted.

Races had been suspended for the Ball. Hundreds of Democratic couples from New Castle County — where they had been out of power on city, county and state levels for four years — drove to Dover to welcome back "happy days."

Col. George Bundeck, superintendent of state police and acting secretary of Public Safety under Tribbitt, declined to comment on reports that operations of the Alcohol Safety Action Plan — the state's drunk driver patrol — had been suspended for the evening.

The ball marked the first time in recent history that the public at large had been invited. It also marked the first time the traditional affair had been held in a facility.

Kay Raughley Makes Perfect Grade at U. of D.
Miss Kay Raughley, daughter of Mrs. Irene Raughley, of rural Harrington, has been named to the Dean's list at the University of Delaware for the fall semester of this year. This is the third consecutive time that Miss Raughley has achieved this honor.

After graduating from Lake Forest High School with honors in 1971, Miss Raughley is attending the college parallel division of the University of Delaware at Georgetown. She is majoring in business and will transfer to Newark campus next year to complete her education.

To qualify for the Dean's list, a student has to have an index of at least 3.25. For the past semester Miss Raughley achieved a perfect 4.00. Another of her notable college achievements, is that at present Miss Raughley ranks in the top 4 per cent of sophomore class at the U. of D.

Minister Receives I.O.O.F. Degree
The Rev. John A. Massimilla, of Felton, completed the Third Degree in membership of the International Order of Odd Fellows, Felton Lodge No. 30, on January 11, at Eden Lodge No. 34, Wilmington. Thomas Kates, of Felton, his sponsor.

ty which could handle more than 1,000 people. It was virtually impossible to dance on the fourth level, where Gov. and Mrs. Tribbitt and Lt. Gov. and Mrs. Bookhammer were still standing in a receiving "line" at midnight. Most of the dancing, such as it was, was done on the first level.

TRASH COLLECTION STATION OPENS NEAR VERNON

A trash collection station has been opened by Kent County on the west side of County Road 455 just north of Vernon.

Known as Station 5, it has been set up and is being operated for the convenience of all persons living in the southwestern portion of the county. It will be used for the collection of household trash only, free of charge.

Hours will be 8 a.m. to 5 p.m., Monday, Thursday and Friday, and 11 a.m. to 8 p.m., Tuesday and Wednesday. An attendant will be on hand at all times to direct persons on the placement of trash, or garbage, which must be in containers.

Loads of up to one-half of a pickup truck will be accepted. More than this amount and special consignments should be made by appointment.

Other trash collections are near Kenton, Barkers Landing and Sandtown.

L. F. Schools Dismiss Early
On Fri., Jan. 26, schools of the Lake Forest School District will dismiss their pupils at 1 p.m. in order to provide time for administrators and teachers to participate in conferences and inservice programs.

Days of Our Years

Ten Years Ago

Fri., Jan. 11, 1963
Fulton J. Downing, one of Harrington's few Republican mayors, was elected Tuesday without opposition. F. Lawrence Price was elected councilman from the Fifth Ward, while Clarence Black was unopposed to re-election from the Sixth Ward.

Harrison Melvin and George S. Graham will battle for Democratic committee in the First Election District of the Ninth Representative District Sat., Jan. 19.

Alfred G. B. Mann was appointed city manager Monday, assuming the post of George S. Graham recently elected sheriff of Kent County.

Rep. George H. Exley was elected president of the Ninth District Democratic Club Tuesday night in Farmington Fire House.

The first tax sale in Kent County in about ten years might be held soon on two properties with large delinquent tax bills. Thomas C. Robbins, county receiver of taxes, appeared before the Kent County Levy Court to request permission to hold sales to collect the taxes. He was told he already has the authority under the law and that the Levy Court doesn't pass on tax sales.

Miss Audrey L. Lord, daughter of Mrs. Pauline Lord, and Louis Zeitler, son of Mr. and Mrs. Herman Zeitler, were married Dec. 14 in Trinity Methodist Church. The Rev. Charles Poukish performed the ceremony.

Twenty Years Ago
Fri., Jan. 16, 1953
E. Powell Hopkins, 60, died at his garage, Harrington, early Tuesday morning. A neighbor, Jefferson Larimore,

Although only half of the track's bars were open, the crush was so great that the revelers exhausted the supply of mixed and some brands of liquor. There was no charge for the Ball but the profit from drinks at \$1 a throw appeared certain to make the affair at least a break even one.

Are You An Average Phone Talker?

Do you have 830 phone conversations per year? Then you're the average American phone user, according to statistics in A.T.&T.'s booklet, "The World's Telephones."

The local Diamond State Telephone Company manager said the publication gives details about world-wide telephones and because it takes a year to compile, statistics reflect the status as of January 1, 1972.

"In this years edition, it shows the world's total phones at 291,000,000," he said. "Good old U.S.A. retains its lead with a total of 125,100,000 phones, next is Japan with 29,800,000, then the United Kingdom with 16,100,000 phones.

More than 98 per cent of the world's phones connect to Bell System's phones. During 1971, some 31,000,000 overseas calls were made between U.S.A. and overseas points - a 24% increase over 1970.

The booklet lists 180,603 phones for Wilmington. (Delaware, with some 410,000 phones, surpasses the Philippines which has 351,200 phones).

SCHOOL BOARD APPROVES BID ON CEILINGS

The Lake Forest Board of Education Monday night approved a bid of \$17,440 to repair water-damaged ceilings and gridwork in the Lake Forest High School.

The building was completed in 1970, but the roof leaked. And the district recently had a new \$140,757 roof installed on the school. Of that, \$100,000 was provided by a special appropriation from the General Assembly, and the state minor capital improvement program provided \$24,454.

The remaining \$16,303 was paid by the district. According to administrative Assistant Melvin Luff, there is still water damage to the walls in the school, and the district is going to attempt to repair that damage on its own.

The latest contract for water-damage repairs was awarded to the John L. Briggs Co. of Georgetown.

The board had filed a \$200,000 suit in Superior Court last August against the architects and contractor. The school was built by the J. Roland Dashiell & Sons firm, and designed by the Wilmington architectural firm of Dollar, Bonner and Funk.

The board also discussed the possibility of constructing a new metal building near the high school to house the department of agriculture. The proposed building would cost about \$26,000, and would be used for agricultural machinery courses.

TRIBBITT NAMES DANIELLO, MORRIS, SCHRANCK TO CABINET

Sherman W. Tribbitt Monday designated three more cabinet secretaries and three others to observe on an acting basis.

Tribbitt told newsmen on the eve of his inaugural he will nominate John D. Daniello as secretary of community affairs and economic development; Clifton E. Morris as secretary of highways and transportation, and J. Thomas Schranck as secretary of labor.

Daniello will receive \$25,000 a cut of \$1,000 from his predecessor; Morris, \$29,000, a reduction of \$2,000 from his predecessor, and Schranck \$24,000, \$1,000 less than his predecessor received.

The incoming governor said Jack D. White, director of the division of social services will become acting secretary of that department.

Col. George Bundeck will continue to head the department of public safety which Tribbitt said he will offer legislation to abolish.

John C. Bryson, currently division head of environmental control, will become acting secretary of the department of natural resources.

Tribbitt said both his number one and number two selections for that job last week withdrew their names from consideration.

Tribbitt has now proposed seven names to submit to the Senate for confirmation.

Earlier he named Edward Hagemeyer secretary of finance; John Babiarz, community affairs and economic development; Robert Reed, secretary of state and M. Martin Isaacs, secretary of agriculture.

Tribbitt said Monday after further consideration both Reed and Isaacs will relinquish their posts as chairmen of the 10th and Sussex County Democratic Committees.

On another staff matter, he said Sherman Webb, his brother-in-law will, serve in some administrative capacity.

Daniello's selection was somewhat of a surprise as it was believed he was eliminated when he sought to become secretary of labor. He is currently employed with Blue Cross and Blue Shield of Delaware and was the unsuccessful candidate for the Congress two years ago.

Schranck is president of the Building and Construction Trades Council, one of two divisions of the State Labor Council. Morris is chairman of the board of directors of the People's Bank on Trust Company of Wilmington. In 1952 he organized the People's Bank and served as its first executive vice president.

Tribbitt said Morris will resign as chairman of the Delaware Racing Commission.

Morris and Daniello both live in Wilmington while Schranck is a resident of Asheburn Hills near Claymont.

Tribbitt also touched on the status of division directors within the various cabinets by asking them all to remain on the job.

They will continue, he said, subject to two conditions: one,

that their philosophy, program and performance be reviewed by the incoming secretaries and two, that they be given the opportunity to review the philosophy and program of the new administration.

"Career decisions will be made upon the completion of this two-way review. This method is, I believe, the fairest both to the new director," Tribbitt said.

Tribbitt stated White will designate an acting director of the division of adult corrections to replace John Moran whose resignation is effective Tuesday.

Tribbitt said he personally will designate an acting budget director to replace James R. Zeller whose resignation is also effective Tuesday.

Tribbitt also said he is still personally opposed to any oil facility in Delaware Bay as proposed by the Gaither committee.

Although he intends to delay any formal statement until he reads the report in its entirety, he said he is also against a superport at sea off the Delaware coast. As to the ocean facility he said, "I have never been sympathetic to that either."

1973 Girl Scout Cookie Sales Starts Jan. 19

The annual Girl Scout Cookie Sale for the Chesapeake Bay Girl Scout Council, Inc., starts Fri., Jan. 19, and order-taking will continue through Sun., Jan. 28. The new family-size box of cookies will sell for \$1.

More than 10,000 Junior, Cadette and Senior Girl Scouts will be selling the five varieties of cookies. They are: chocolate chip'n nut, mint, butter-flavored shorties, assorted sandwich and peanut butter.

The date of delivery of cookies and payment of money will be Feb. 4 - March 4. Older Scouts, Cadettes and Seniors, may hold direct sales or shopping center booth sales at this time.

Where the Dollar Goes

Ten cents of each box stays with the Girl Scout troop for girl-planned program, special events, troop camping and service projects.

47 1/2 cents stays in this Council to help provide better program, camping, accamperships and to supplement the Council's operating budget. Equipment and property its purchased and maintained for the girls. The cookie profit has helped maintain five camps owned and operated by the Council. They are: Country Center, Hockessin; Camp Eleanor Snedeker, St. Georges; Camp Grove Point, Earleville, Md.; Camp Todd, Denton, Md.; and Camp Nasawango, Shad Point, Md.

42 1/2 cents of each \$1 cookie box goes to the cookie company to pay for the cookies, delivery and sales aids.

SCHOOL BOARD APPROVES BID ON CEILINGS

The Lake Forest Board of Education Monday night approved a bid of \$17,440 to repair water-damaged ceilings and gridwork in the Lake Forest High School.

The building was completed in 1970, but the roof leaked. And the district recently had a new \$140,757 roof installed on the school. Of that, \$100,000 was provided by a special appropriation from the General Assembly, and the state minor capital improvement program provided \$24,454.

The remaining \$16,303 was paid by the district. According to administrative Assistant Melvin Luff, there is still water damage to the walls in the school, and the district is going to attempt to repair that damage on its own.

Morris Rosker Killed In Crash

A Milford wholesale food distributor was killed early Sunday when, police said, he apparently pulled in front of a tractor-trailer on U. S. 113.

Town police said Morris Rosker, 59, of 719 S. Du Pont Blvd., Milford, was dead on arrival at Milford Memorial Hospital after the 1:17 a.m. accident at Old Shawnee Road.

Volunteers from the Carlisle Rescue Squad had to pull Rosker from his demolished car, police said.

Rosker was driving onto U.S. 113 from Old Shawnee Road with his wife Mrs. Ruth Rosker, also 59, as a passenger, when the truck, driven by Adam C. Paugh Jr., 54, of near Georgetown, collided with the car.

Paugh was only slightly injured. Mrs. Rosker was given emergency treatment at Milford Memorial Hospital, and transferred to Delaware Division where she was listed in serious condition last night.

Police aid an investigation showed Paugh was not at fault, and no charges were filed.

Mr. Rosker was born in New York State, but lived in Milford a number of years. He was an Army Air Corps veteran of World War II. He operated the food business behind his home, the family said.

Surviving besides his wife

(Continued on Page 5)

\$35,000 Grant On Merit Plan

A \$35,000 grant has been awarded to the State of Delaware for the completion of the review of the classification plan and merit system rules in the State Personnel Office, Governor Russell W. Peterson announced Friday.

The funds made available through the Intergovernmental Personnel Act of 1970 were approved by Milton I. Sharon, Regional Director of the United States Civil Service Commission.

The project begun in May, 1972, is being directed by State Personnel Officer John T. Reardon.

As a result of the study, the State hopes to update all position classifications to align them with work actually being performed. A trained committee will also be established to continue evaluation of the classifications.

An updated set of regulations for the Merit System will also be prepared. The \$35,000 grant was necessary to complete the project. A final report is expected in March, 1973.

City Government Reorganizes

William Minner assumed the post of mayor Wednesday night, Jan. 10, in the city government's annual reorganizational meeting.

Councilmen assuming their posts were William E. Griffin, Second Ward, and William W. Shaw, Jr., Fourth Ward. Holdover councilmen are as follows: First Ward, Jack Wyatt; Third Ward, James Carroll; Fifth Ward, John T. Satterfield, and Sixth Ward, C. Tharp Harrington.

Wesley Students Return From Trip

Twenty-one students enjoyed a 12-day Winterim expedition called "Back To Environment".

Via bus, and accompanied by four faculty members, Terrence L. Higgins, Elaine Wright, Ellen Davidson and Barry Reber, they visited the Florida Keys and the Everglades National Park. The emphasis was on Man's impact on his Marine Environment.

The students collected species, determined ecological relationships and prepared work sheets.

They met in the evenings in groups to discuss and to evaluate their many findings.

On their way southward they visited Duke University Marine Lab, also the University of Georgia's lab on Sapelo Island.

The Winterim trip carried with it three credit hours for the students participating.

Levy Court Approves HUD Zoning Here

Kent County Levy Court Tuesday approved the zoning change for a public housing site west of Harrington, paving the way for at least the second such development in the county.

The rezoning request had been deferred from last week when some question arose about the Harrington town line, which cuts through the proposed site.

Harrington's council told the Levy Court that it had no objection to the project, and indeed welcomed it as a boost to the town's economy.

With that the commissioners unanimously approved the zoning request. They also approved a request from the Board of Assessment to hire a consulting

were sworn in by Alderman Anna Hampton.

Previous to the swearing in, Outgoing Mayor Burton E. Satterfield expressed his appreciation for aid from the Council, volunteered his support whenever needed, and briefed the Council on last-minute information on an impending HUD housing development, the Brown's Branch Tax Ditch and an impending visit of a state highway official to discuss an entrance from U.S. 13 to Peck Avenue and a truck route to the site of Burris Foods now under construction on Reese Avenue.

Council voted for James Carroll as vice mayor, with remaining Treasurer Howard Wagner and John S. Harrington as secretary.

In other business Monday night, the Council voted to authorize City Manager Jack Harrington to write a letter to Attorney Herman Brown approving a projected low-rent housing development on the land of Townsend Masten near town. The project will be sponsored by the federal housing and urban development.

Incidentally, HUD has declared a moratorium on a number of housing developments in the nation, but the local project will go ahead because it has a preliminary loan contract approval.

City Council will name the city employees Mon., Feb. 5. In the meanwhile, Mayor Minner asked the city manager to give a list of employees, their jobs and their salaries to each councilman.

engineer to check the accuracy of the first phase of the Kent County tax mapping.

Ralph R. (Rusty) Baynard, executive secretary of the board, had managed the project until his death Jan. 7. No one else is familiar enough with the standards to assume the responsibility, the board told the commissioners.

Walter L. Fritz, county engineer, reported that the Kent County sewer began operation late Saturday, with the wastes from Milford now being treated at the county plant near Frederica.

"We're not having any particular problem," he said.

The remainder of the county system will go into use gradually during the spring.



Austin N. Heller, Delaware's secretary of natural resources and environmental control; Maurice B. Rowe, Virginia's secretary of commerce and resources; J. Millard Tawes, former governor and first secretary of natural resources for the state of Maryland and Spencer R. Ellis, Maryland's assistant secretary of natural resources (left to right) endorsed "Delmarva - Improve It or Lose It" week at a Delmarva Advisory Council Conservation committee meeting January 8.

Austin N. Heller, Delaware's outgoing secretary of natural resources, itemized some of the steps Delaware is already taking to protect its own natural resources.

He touched first upon the state's coastal zone act, a landmark and nationally recognized piece of legislation which prohibits heavy industry along Delaware's coastland and indicates how critical the people of Delaware consider the question of land use. He then mentioned grants,

legislation and programs covering such areas as recycling material, disposing of junked automobiles, planting oysters, phase funding sewer and water project and handling wetlands.

Maurice B. Rowe, Virginia's secretary of commerce and resources, pointed out that Virginia is in the vanguard of states that have realized the importance of planning to the wise use of resources. "We can preserve and at the same time enhance our natural resources for the eco-

mic betterment of our people," he said, adding that "it is better to suffer short term gain than to insist upon short term gain that will result in long term pain."

Present at the meeting, held at the district office of Delmarva Power and Light company were: Those present from Delaware included: David Nash, soil conservation service, Dover; Merrill G. Calloway, Georgetown; James E. Jackson Jr., DAC board member, Milford.

REVENUE SHARING BENEFITS HARRINGTON RESIDENTS

As dull and intricate as the following article may be, it affects every resident of Harrington. The City has already received federal appropriation and another is anticipated this month, with others every three months beginning in April.

This program is to continue for five years retroactively to Jan. 1, 1972.

The expenditure of these funds by the City of Harrington means the growth of the City. The growth of the City will help the pocketbook of everyone.

1. Amount of Assistance

A total of \$30.1 billion over a five-year period. Annual amounts on a calendar year basis are as follows: 1972-\$5.3 billion; 1973-\$5.975 billion; 1974-\$6.125 billion; 1975-\$6.275 billion; 1976-\$6.425 billion.

With the exception of 1972, the revenue sharing funds will grow at a rate of \$150 million per year. This increase is divided 1/3 to states and 2/3 to local government.

2. Funding Mechanism

Not tied to a percentage of the federal personal income tax base or collections; rather a permanent, five-year authorization/appropriation into a "local government high priority expenditure trust fund".

3. Retroactive Payments

Payments will be made retroactively to January 1, 1972.

4. Eligibility

All states and general purpose local governments (counties, townships, and incorporated municipalities). There is no population cut-off for local governments. Local jurisdictions may not receive over 50% of its adjusted taxes plus intergovernmental transfers. There is a \$200 minimum allocation. In addition, a local government may not receive less than 20% of the per capita allocation to all governments in that state, nor more than 145%.

5. State & Local Government Trust Funds

State and local governments must create a trust fund in which to deposit all revenue sharing funds. Purpose to facilitate proper federal auditing and accounting procedures. Must use amounts in trust fund within whatever reasonable time period specified by Treasury regulations (probably 18 months).

6. Restriction on Use of Funds

(a) High Priority Expenditure Items

Such restrictions apply to local governments only. There are no restrictions on the use of state funds. The local funds must be used for certain "high priority expenditures" designated by Congress. For maintenance and operating expenses, the funds may be used for public safety, (including, but not limited to, law enforcement, fire protection and building code enforcement); environmental protection (including but not limited to, sewage disposal, sanitation, and pollution abatement); public transportation (including, but not limited to, transit systems and streets); health; recreation; social services for poor or aged; financial administration (including, but not limited to, budgeting, auditing, and tax collecting); and libraries. For capital expenditures, there are no limitations. Funds

may be expended for any and all capital expenditures which are authorized by law, as long as they meet an "ordinary and necessary" test.

(b) "Matching" Federal Programs

State and local governments may not use revenue sharing funds to match federal funds for other federal grant-in-aid programs where there is a requirement for matching with either federal or non-federal funds. Revenue sharing funds may be used to supplement other federal grant funds.

(c) State & Local Maintenance of Effort

Provides that state governments may not reduce the financial aid they have been giving to local governments from non-revenue sharing funds. There is no "Maintenance of Effort" requirements for local governments.

(d) Non-discrimination

Prohibits state and local governments from using revenue sharing funds in a manner that discriminates on the basis of race, color, national origin or sex.

(e) Davis-Bacon

Requires the local governments provide that all laborers and mechanics employed by contractors or sub-contractors on construction projects financed by revenue sharing funds be paid wages not less than those prevailing on similar construction in the locality in accordance with the Davis-Bacon Act. This provision would only cover projects financed by 25% or more of revenue sharing funds.

(f) Prevailing Wage Rate

The local governments must pay wages not lower than the prevailing rates of pay for persons employed in similar jobs by that local government.

7. State & Local Distribution Formula

The Conference Committee agreed on a formula which would give each state the higher amount of either the House formula or the Senate formula each year. The House version of the bill essentially would have distributed the funds to state and local governments on the basis of population, urbanized population, and population inversely weighted for per capita income. The Senate version essentially would have distributed the funds on the basis of population, state and local tax effort, and inverse per capita income (the so-called poverty factor). By taking the higher amount for each state, the

total program for the first calendar year (1972) should be \$5.825 billion (this is the base figure for the program and its future growth). However, the Conference Committee determined that federal government should expend only \$5.3 billion the first calendar year. Therefore, after the higher figure for each state is determined, it will be proportionately reduced so that the total for all states will equal \$5.3 billion (this means an approximate reduction of 9.1% for each state). The totals under the House bill, the Senate bill, and Conference Committee agreement are shown in the attached chart.

After this higher amount is distributed down to the state level, it is divided one-third to the state government and two-thirds to the local governments within that state. The two-thirds local pot for each state is then: 1) distributed to the county area on the basis of county population, tax effort, and inverse per capita income (i.e. each county area's share is determined by its population multiplied by the tax efforts of the county and its population multiplied by the tax efforts of the county and its municipalities and further multiplied by its inverse per capita income); 2) split between the county and its municipalities on the basis of "adjusted taxes". Adjusted taxes are defined to include property, income, sales, growth receipts, corporate income, etc., with the exception of those taxes levied for or attributable to education. This step in the formula determines the amount that a given county government would receive; and 3) divided among the municipalities within that county on the basis of the same three factors of population, tax effort, and inverse per capita income.

After the first twelve months (starting January 1, 1972, a state may adopt an alternative formula for distribution of the two-thirds pot to local governments by using the optional factor of population multiplied by tax effort or population multiplied by inverse per capita income. The weighing of the factors may vary from zero to 100%. The change may be applied at the county level, the municipal level, or both. Any change must be applied uniformly throughout the state. A state may adopt an alternative formula only once.

8. Reporting Procedures

Provides that each state and local government must submit an annual report to the Treasury Department detailing the purposes for which the funds are intended to be spent. They must also submit reports at the end of the year showing how the funds have been spent or obligated. Reports must also detail amounts and sources of non-revenue sharing funds used for matching federal grants. Each state and local government must also publish a copy of these reports in state and local newspapers.

9. Budgeting Procedures

State and local government must follow the same budgetary laws and procedures for expending revenue sharing funds as it does for its own revenues.

10. Audit Procedures

State and local governments must use such fiscal, accounting and audit procedures as established by the Department of the Treasury. The Treasury Department may accept a certification from local officials indicating valid auditing procedures.

11. Social Services Program

The Senate had added an amendment to the revenue sharing bill which would place a limit of \$800 million per year on the social services programs, and limit the eligible programs to child care and family planning services only.

The Conference Committee raised this \$800 million to \$2.5 billion, beginning July 1, 1972. This amount is merely an authorization, and still must go through the annual appropriations process. The funds would be distributed among the states on a straight population basis. The eligible services were also expanded to include most of those that are eligible under existing law, rather than the two limitations contained in the Senate bill—family planning and child care services. Funds under the program for retarded persons, child care, family planning, narcotics treatment, alcoholic treatment, and foster home may be spent on potential, present, and prior welfare recipients. However, 90% of the remaining funds (after the funds have been spent by the state or county for the six programs just mentioned) may be spent only for applicants or recipients of welfare. Child care services, as defined under this Conference Committee agreement, have been limited and include only those services needed to enable a member of a family to work, take job training or to provide necessary supervision for a child whose mother is deceased or disabled. The program matching features still contain the 75% federal, 25% local ratio.

New Century Club Notes

The Harrington New Century Club held its regular meeting Tues., Jan. 9. Mrs. Joseph L. Brinster, presided at the business meeting.

Mrs. Francis J. Winkler introduced John Curtis. He gave a very informative talk on "Conservation". Mr. Curtis

PRECIOUS



Baby's Sterling Juice Cup

All Gifts Beautifully Wrapped

FORNEY'S Jewelry Store

13 Lookerman St. DOWNTOWN DOVER

With Sincere Thanks

to all my Lake Forest School District friends for the purse presented me upon my retirement.

Steve Kliment

ATLANTIC FLORAL RENTALS
ARTIFICIAL FLOWER ARRANGEMENTS
ALL OCCASIONS
645-8303 LEWES

Harrington Fire Company Auxiliary News

The meeting took place on Jan. 8, at the Fire Hall with 18 members present.

Balloting on a new member took place. Miss Elizabeth Minner was accepted into the Auxiliary.

There will be a Kent County meeting on Jan. 23 at 7:30 p.m. at Marydel.

The yearly reports were then given by Mary Hendricks, financial secretary; Betty Taylor, treasurer; Elma Oliver, Sunshine chairman; Irene Outten, Dining room chairman; Delores Collins, recording secretary; and Dorothy Collins gave the kitchen report.

Elma Oliver then installed the following officers for 1973: President - Nancy Green

Vice-President - Cheryl Man-ship
Recording Secretary - Beverly Hendricks
Treasurer - Betty Taylor
Assistant Treasurer - Delores Collins
Financial Secretary - Mary Hendricks
Assistant Financial Secretary - Betty Minner

Dorothy Collins then presented Nancy Green, Betty Taylor and Delores Collins with their certificates for completing an 8 hour course at Fire School.

Nancy Green presented Dorothy Collins with her Past-President pin. Mary Hendricks reported that the Refreshment Committee for February is: Blanche McKnatt, Iona Draper, Madalyn Dyer, and Pat Smith.

SHOP AND SWAP
in the
WANT ADS

Kent General Hospital Notes

1/2/73 TO 1/9/73

ADMISSION

Elwin Ralyea, Harrington
Rodney Warren, Harrington
Cheryl Jones, Felton
Gertrude Ellwanger, Harrington
Mae Floyd, Felton
Michael Harding, Felton
Martha Taylor, Felton
Henry Webb, Greenwood
Charles Tribbitt, Harrington
John Fair, Frederica
Mabel Woikoski, Felton

DISCHARGES

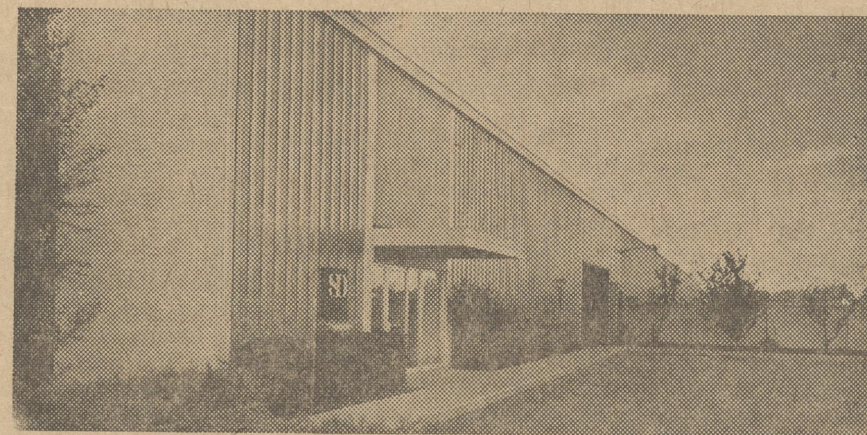
William Currence
Wanda Foskey
Cheryl Jones
Mae Floyd
Michael Harding

BIRTHS

To Mr. and Mrs. Charles Jones, Felton, boy.

Sidewalk sale on Stran buildings

Construction savings with the Stran building system can pay for your sidewalks, parking lots and driveways. And that's just for starters. Stran's savings in heating, cooling, maintenance and insurance could pay for a lot more things later on. Interested? Call us on it.



M. A. HARTNETT, INC.
600 Forrest St. Dover 674-0300



A Total Service **Stran** Franchised Builder

Comfortable, Desirable, Affordable



WE INVITE YOU TO STOP BY AND SEE OUR SPECIAL VALUES

- 1967 Air Line - 12 x 60 - 2 Bedroom \$2750
- 1970 Montego - 12 x 48 - 2 Bedroom \$2900
- 1971 Colburn - 12 x 52 - 2 Bedroom \$3895
- 1972 Crimson - 12 x 52 - 2 Bedroom - \$3895
with Washer and Dryer
- 1964 Nashau - 10 x 50 - \$1595
- 1965 American - 10 x 48 - - 2 Bedroom \$1500
- 1970 Pacemaker - 12 x 60 - 2 Bedroom \$3995
- 1967 Magnolia - 12 x 55 - 3 Bedroom \$3195

FREE Set Up & Delivery

Within A 100 Mile Radius

We Service What We Sell

All New Furniture

On the Spot Financing

6 Month Guarantee

Name Your Own Down Payment

DOVER MOBILE HOME SALES, INC.

PLEASE CALL 398-8181 — 24 HR. ANSWERING SERVICE

ROUTE 13 BETWEEN DUALS — HARRINGTON

OPEN DAILY 8 TO 8—SAT. 8 TO 4—SUN. 1 TO 4

WE WILL BE CLOSED THIS WEEKEND - FRIDAY and SATURDAY

Because

We Have Moved

TO

1127 S. DuPont Hwy.

(ACROSS FROM CARROLL'S SHOPPING CENTER)

BOLAN MOTORS, INC.



SALES & SERVICE

WE INVITE YOU TO VISIT US THERE ON MONDAY

Greenwood

By Pat Hatfield

News from Greenwood Kiwanis Club: Club president, Leon Rust and Betty, Alvin and Doris Mills, Stanley and Mary Cahall, Nelson and Minnie Meredith, Ralph and Emma Hynson, and Lawrence Meredith, attended the reception and dinner honoring Capital District Governor, Scott R. Brewer, at the Milford Century Club last Thursday evening. This gala affair was promoted and arranged for by the Milford Kiwanis Club. Clubs from the 7th, 11th and 16th Division were represented at this Annual Kiwanis Affair.

Twelve Greenwood Kiwanians attended their own meeting the same night and were compensated by having Miss Connie McDowell as their guest. After dinner, Miss McDowell read her prize-winning scripton entitled "My Responsibility to Freedom". There was high approval of her well-prepared paper from her audience. Miss McDowell was congratulated upon winning both the local and the District contests and all wished her well in the State and National Contests which are to follow.

William Fleischauer, program chairman arranged the evening and introduced the speaker and her parents, Mr. and Mrs. Herbert McDowell. Vice president, John, Dorofee Jr., presided in the absence of club president.

The Rev. Etta M. Clough, pastor of Greenwood Wesleyan Church on Addix Ave., announces that Mr. and Mrs. Elijah Sterling, of Baltimore, will be speaking and singing in the Sunday Service on Jan. 21, 10 a.m. and 7 p.m. The Sterlings sing with the auto-harp and the organ. Mr. Sterling is a lay speaker. Mrs. Sterling's mother, Mrs. Mar-

tha Holden, of Chestertown, will also assist with the singing.

Don't forget that the Greenwood Methodist Charge is sponsoring the children's groups. . . . The Whirlybirds grades 1 to 3 and the Jet Cadets, grades 4 to 6, meeting every Monday evening in the Greenwood Church Educational Building, from 6:30 to 8. Everyone from all the churches on the charge is invited to participate.

Mr. and Mrs. Lawrence Graham attended the Ice Follies in Baltimore on Saturday evening.

Sunday dinner guests of Mr. and Mrs. Lawrence Graham were Mr. and Mrs. Elmer Hamstead and daughter, Karen, and Mr. and Mrs. William R. Hamstead and daughter, Lisa, all of Scaford.

The Rev. Charles Walz, pastor of the Greenwood Charge, announces that on Sunday evening at 7 p.m. in the Greenwood Church, the "New Creations", a gospel singing group will be present.

Mr. and Mrs. Jack Gallaway, of Claymont, were Sunday dinner guests of Mr. and Mrs. Albin P. Ottey.

Mr. and Mrs. Robert Cox were Sunday evening callers at the home of the Jacob Hatfields.

Mr. and Mrs. Joseph Sawadski, of Trenton, N. J., spent the weekend with their daughter and family, Mr. and Mrs. Robert Cox.

Houston

By Mrs. Margaret Thistlewood

Mrs. Edna Sapp was a dinner guest on Sunday of Mr. and Mrs. David Bachman, of Bridgeville.

Emory Webb entered Milford Hospital last Wednesday for observation and tests. We hope he soon will be well again and home.

The Houston Homemakers Club will meet this Thursday evening at 7:30 at the home of Mrs. Anna Belle Brown.

E. D. Chamberlain, of Arlington, Va., spent the weekend with his mother, Mrs. Marie Chamberlain.

Mrs. Alice Kintz spent Wednesday visiting Mr. and Mrs. Ralston Pepper, of near Georgetown.

Walter Jefferson, of Milton, spent several days last week with his daughter and son-in-law, Mr. and Mrs. Charles Marvel.

Gene Sharp, of Wilmington, spent the weekend with his parents, Mr. and Mrs. Eugene Sharp.

Mrs. Stella Sapp was a dinner guest on Sunday of Mr. and Mrs. Dewey Sapp, of near Milford.

On Saturday, Jan. 13, the Kent County Public Speaking Contests were held at the Dover Grange. Houston Cardinal members, who participated were Richard Lindale, Rhonda Kenton and Herbie Kenton. Richard Lindale received a second place ribbon in the Jr. Boys Div. Rhonda

Kenton received a second place ribbon in the Jr. Girls Div. Herbie Kenton received a plaque for being the top in the mini Boys Div.

Mr. and Mrs. Jack Sapp have returned from a trip out to Riedley, Calif., where they visited with their daughter, Susan, and son-in-law, Don Riehl, also Don's parents, Mr. and Mrs. Gus Riehl. They visited many places of interest, snow covered mountains in the National parks, where the giant Sequoias grow. Three days were spent in Los Angeles, a day in Disneyland, was a highlight and a day spent to the Pacific Ocean along the beach fronts. A visit to the Hearst Castle at San Simeon, Calif., was a great thrill. Flying out by United Air Lines with good weather gave perfect views to see the large snow storms in the Mid Western States, the Grand Canyon and the Pacific Ocean.

Farmington

By Mrs. Mildred Gray

Mrs. Albert Vincent and Mrs. William Wood, of Harrington spent the weekend with their daughter and son, Mr. and Mrs. William Wood, of McClean, Va.

Mrs. George Kreigh, John McWeeny and Hershell Lindall are all patients in Milford Hospital, after undergoing surgery.

Dave Messick is home after having treatment in Milford Hospital.

Mr. and Mrs. Seibert and Mrs. Leon Kubek spent Saturday visiting her son, Leon Kubek, in Philadelphia, Pa.

Mr. and Mrs. William Messick entertained a number of their friends to a party Saturday before their Delaware Quarter Horse Banquet at the Elks Club in Dover.

Felton

By Mrs. Walter Moore

Felton United Methodist Church, Jan. 14. Rev. John A. Massimilla, minister. The selection of the Junior Choir was "Somebody Bigger Than You And I". The anthem of the Senior Choir was "Pass Me Not O Gentle Savior". The Rev. Massimilla's sermon was "Look Back".

The United Methodist Women have given new artificial flowers for the altar vase.

The election of Trustees will be on Feb. 4 after the worship service.

Mrs. Lewis Taylor, who was a patient in the Kent General Hospital, Dover, last week, has returned home. Mrs. Herman Woikoski, who was also a patient in the Kent General Hospital has also returned to her home.

Mrs. William Eliason Jr., who has been a patient in the Milford Hospital, has been moved to the St. Francis Hospital in Wilmington.

Mrs. Moses Friedman, of Newark, who has been a patient in Milford Hospital is now recuperating at the home of her daughter and family, Mr. and Mrs. Albert Warren, Janie and Downes.

Mr. and Mrs. Reed Hughes entertained at dinner on Wednesday, Mrs. Vergie Coates and daughter, Diane, of Harrington; Mrs. Ina Knox, of Frederica; Mr. and Mrs. Albert Warren and their house guest, Mrs. Anna Dill, of near Philadelphia. The dinner was in honor of Mrs. Morris and Mrs. Hughes, who were celebrating birthdays.

Edwin Gruwell, of near Wilmington, was a Wednesday visitor of his aunt, Mrs. A. C.

Dill.

Mr. and Mrs. Charles Hatfield were New Year's Day dinner guests of her aunt, Mrs. Virginia C. Morrow.

Last Saturday dinner guests of Mr. and Mrs. Charles Harrison and grandson, Mike, were Mr. and Mrs. Robert Tonneson, Mark and Patricia Stallings, of Hanover, N. J., and Mrs. Harrison's sister, Miss Thalia Buck, Asbury, N. J.

Mr. and Mrs. Richard Adams and son, Keith, and mother, Mrs. Mamie Adams, attended the wedding of Miss Rebecca Messick and Daniel Vanderwende, at Farmington Brethren Church and reception at Fire Hall, last Saturday.

Mr. and Mrs. Harry Carlisle Jr. and daughter, of Salisbury, Md., were Saturday evening guests of his mother, Mrs. Vergie Carlisle.

Mr. and Mrs. Clifton Chambers and son, Scott, entertained a few close friends and relatives on Saturday evening, Jan. 13, in honor of the 5th birthday of their son and

brother, Tommy Chambers.

Mr. and Mrs. T. L. Kates spent Sunday with her parents, Mr. and Mrs. L. C. Eberwein, in Pennsville, N. J.

Mrs. Clara Hughes, of Frederica, is spending a few days with her son and wife, Mr. and Mrs. Reed Hughes, and their guests, Mrs. Anna Dill.

The Willing Workers Fellowship will have a covered dish supper and meeting on Wednesday evening, Jan. 24, at 6:30 in the Fellowship Hall. The hostesses are Mrs. Lynn Torbert, Mrs. T. L. Kates and Mrs. Eugene Hughes.

Mrs. Florence Haffner

Mrs. Florence Haffner, 71, of Houston, died Friday at the Delaware Home and Hospital at Smyrna after a long illness. Her husband, John Haffner, died a number of years ago. She is survived by a brother, Richard L. Hartley Jr., of Ellendale. Services were held Tuesday morning at the Berry Funeral Home in Milford. Interment was in Ellendale Cemetery, Ellendale.

BERRY FUNERAL HOMES

PHONES MILFORD 422-8091 FELTON 284-4548

GILSTAD REAL ESTATE

Raughley Building

Sales - Rentals - Appraisals

Office 398-3000

Res. 398-3337

Chuck Roasts 79¢ lb.

Arm Roasts 99¢ lb.

Rib Steaks \$1.09

SMOKED HAMS - SMOKED BACON PORK CHOPS - PORK TENDERLOIN Homemade SAUSAGE & SCRAPPLE

COUNTRY BUTCHER SHOP

1/4 MILE WEST OF GREENWOOD Phone 349-5267 Closed Monday

WHAT'S YOUR BEEF?

IT'S LOW, LOW PRICED HERE!



Call Your Local Agent For Local Service

Raughley Insurance Service

Phone 398-3551

398-3997

Harrington, Del.

Serving . . . YOUR FAMILY IS OUR BUSINESS



OUR MENU CHANGES DAILY

- THURSDAY SPECIAL - Corned Beef & Cabbage \$1.00
FRIDAY SPECIALS - Fried Filet of Flounder \$1.00
- Chicken Cacciatore \$1.00
SATURDAY SPECIAL - Hot Beef Sandwich \$1.00
SUNDAY SPECIALS - Roast Beef \$1.00
- Roast Chicken \$1.00

Beach Drive Diner

(Formerly Hollywood Diner)

DuPONT HWY. & WALNUT ST. MILFORD 422-6111 OPEN 24 HOURS DAILY

Medicine advertisements: VICKS FORMULA 44 COUGH SYRUP 86c, ALLEREST DECONGESTANT TABLETS 99c, BUFFERIN TABLETS 119, BAYER CHILDRENS ASPIRIN 29c

CARE DRUG CENTER LARGE SIZE SWEEPSTAKES. FREE! ENTER THE LARGE SIZE SWEEPSTAKES!! Nothing to buy! Entry blanks are available at all CARE DRUG CENTERS.

Product advertisements with prices: KLEENEX 200s White 29c, Milady SHOPPING TOTE BAG 49c, NORTHERN ELECTRIC HUMIDIFIER 9.99, TEGRIN MEDICATED SHAMPOO 99c, RIGHT GUARD DEODORANT SPRAY 59c, PANASONIC Toot A Loop RADIO 12.88, RIBBED PLASTIC FLOOR RUNNER 29c, SKINNY DIP COLOGNE 1.49, NORTHERN ELECTRIC VAPORIZER 3.99

Save With These LARGE SIZE Coupons. Johnson's baby oil 99c, Johnson's baby lotion 89c, F.D.S. Feminine Hygiene Deodorant Spray 1.19, ALBERTO BALSAM SHAMPOO 1.39

There's a CARE Drug Center near you! Harrington Pharmacy, Ragains Pharmacy, Dover Pharmacy, McNaughton's Pharmacy

THE HARRINGTON JOURNAL
 THE HARRINGTON JOURNAL PUBLISHING CO.
 (Incorporated) Publishers
 C. H. BURGESS Editor

Subscription Rates \$5.00 per year
 Out of State \$6.00 per year

Office of Publication, 1 Commerce Street, Harrington, Delaware. Second class postage paid at Harrington, DE 19952.

Fifteen years is a long time for one to serve in the city government. The fact Burton E. Satterfield, the outgoing mayor performed this feat, without pay, indicates a dedicated public servant almost unique in Harrington.

Charles L. Peck, Sr. served 25 years in the city government as councilman and mayor. Burton E. Satterfield served 11 years as councilman from the Third Ward and four years as mayor.

One would have thought he would have been glad to relinquish city duties but at the reorganization meeting last week he did not appear enthused.

Believe it or not, there is often a bit of sadness leaving a place where one has been a fixture so long. Satterfield refused to run again because of the exigencies of his job in Dover.

Incidentally, in the election in January, 1969, he garnered 526 votes against 107 for Wilson G. Bradley. We do not believe the total number of votes, 633, has not been topped here, or has it?

Satterfield had an arduous time because of the strained circumstances of the city's financial picture. This was largely due to necessary capital expenditures. The city still needs money but Satterfield will not have to take a deep breath.

Poems from Paradise Pastures

By W. Cliff Miller

— Make 1973 Clean

POLLUTION

In fourteen hundred and ninety-two Columbus sailed the ocean blue, If only Chris was alive today His words, I know, would be this way. What can that black scum yonder be? What has become of the deep blue sea? What is that stench that fills the air? Why is it so? Does no one care? We have done a lot in seventy-two To try to keep the ocean blue And we'll do lots more in '73 To keep the air and water free.

Spartan Wrestlers Own 3-1 Record

Lake Forest's Spartan wrestling team owns a 3-1 log, after losing 27-18 to the perennially strong Caesar Rodney Riders and winning 45-6 over Dover High's Senators.

Caesar Rodney shared the Henlopen Conference title with Smyrna and Sussex Central, last winter. These same three teams sport 3-0 records at this writing.

Lake Forest gave the Riders their toughest battle to date and led 12-10 after six of the twelve matches had been contested.

Caesar Rodney won eight tests to Lake Forest's four victories, but the Spartans made the score respectable by scoring two falls to none for the Riders.

Lake Forest's two unbeaten grapplers, Charles Baynard and Gilbert Curry, racked up the two pins. Baynard is the only unbeaten 132 pounder in the Henlopen Conference and is the early favorite for an individual title, in that division.

Curry, the 300-pound "Sandtown Steamroller" is in great form, but is in a tough division, with a couple of strong foes ahead.

Tom Clarke and Chris Adamo had decision victories for Lake Forest. Bob Bosco, of Caesar Rodney, wrestled here for the last two years, moving to the CR district last summer. Bosco edged Martin Miller 7-6, at 117 pounds.

Dover managed to capture just two decisions, while the Spartans pinned five Senators and outpointed another quintet.

Falls were scored by Terry Jarrell (100), Martin Miller (117), Tony Harmon (150), Skip O'Neal (182) and Gilbert Curry, in the Unlimited Class. Curry's match ended in 1:25, Miller's in 1:50.

Harmon, a strong, swift, talented sophomore, has had an unusual grappling career. Undeclared in two years at W. T. Chipman School (seventh and eighth grades), he sat out his freshman year because of personal problems. After the one year hiatus and the resulting loss of momentum and continuity, his first varsity match was against the redoubtable Morgan Rigby of Caesar Rodney. Rigby, a brother of two state champions, was second in the state meet in 1972. The script called for a quick Rigby pin, but the Spartan lasted the distance and scored

four points, though losing the decision. Harmon flattened Hanna, of Dover, in 2:45. If this boy never wins a state title, his failure might be a direct result of sitting out 1972, after such a great start of Chipman.

LAKE FOREST 18 CAESAR RODNEY 27

100-Kemp CR dec. Jarrell 2-0.
 109-Mancuso CR dec. G. Jarrell 4-0.
 117-Bosco CR dec. Miller 7-6.
 125-Clarke LF dec. Rincon 6-3.
 132-Baynard LF pinned Tiedgan, 1:36.
 136-Adamo LF dec. Christy 5-2.
 143-Collins CR dec. Davis 3-0.
 150-Rigby CR dec. Harmon 15-4.
 159-Bordley CR dec. Baker 7-0.
 169-Palmer CR dec. Woodward 15-0.
 182-C. Webb CR dec. O'Neal 6-2.

Hwt-Curry LF pinned J. Webb 1:46.
Lake Forest 45, Dover 6
 100-T. Jarrell, LF, pin Squire 5:31.
 109-Ware, D, dec. G. Jarrell, 7-6.
 117-Miller, LF, pin Leitzinger 1:50.
 125-Clark, LF, dec. Scrafford 2-0.
 132-Baynard, LF, dec. Zimmerman 2-0.
 138-Adamo, LF, dec. Austin 7-3.
 143-Mertz, LF, dec. Bradley 5-2.
 150-Harmon, LF, pinned Hanna 2:45.
 159-Baker, LF, dec. Greenfield 4-2.
 169-B. Ward, D, dec. Woodward 8-1.
 182-O'Neal, LF, pin Laurer 2:27.
 Hwt-Curry, LF, pin Williams 1:25.

Church Bowling

TEAM	W	L
Calvary I	42	22
Magnolia	39½	24½
Trinity I	33	31
Calvary II	31	33
Bethel	25½	38½
Trinity I	22	42
Lutheran	inc.	
St. John II	inc.	

WOMEN 160 OR OVER

B. Beebe - 191
K. Minner - 190
M. Hall - 182, 175, 165 (522)
A. Savage - 161, 163

MEN 190 OR OVER

R. Betts - 203, 212, 222 (637)
J. Besenfelder - 211
R. Scouten - 202, 205
K. Hopkins - 203
L. Farrow - 201, 191, 191
C. Hamilton - 200
D. Wilcutts - 195

Cagers Lose To Raiders, Upset Dover

Lake Forest's basketball Spartans continue to play .500 basketball. Woodbridge downed the locals 66-56, but the next start saw an upset of Dover's Senators, by 71-64.

Woodbridge held the hot hand in the final period, outscored the Spartans 23-9, to get the victory.

Don Bryant (17) and Jim Dill (11) were in double figures for Lake Forest.

Dover is one of the two largest Henlopen Conference Schools. They're usually tough in basketball. These are two of the reasons why Jim Blades and his Spartans are relishing the upset victory.

Field goals were even at 30 each. The Spartans 11-4 advantage in free throws was the difference.

The locals outrebounded the Senators with Don Bryant's 13 caroms leading the way. Bryant's 20 points was high for Lake Forest, with Lawrence Sorden adding 16, Jim Dill 14 and Neil Travis 12.

At this writing the Spartans are 3-3 in league play and 4-4, over all.

LAKE FOREST			
	G	F	T
Sorden	7	2-2	16
Bryant	10	0-3	20
Atkinson	1	0-0	2
Dill	3	8-11	14
Travis	6	0-0	12
Tolson	0	0-0	0
Burton	3	1-3	7
Willmsen	0	0-0	0
TOTALS	30	11-19	71

DOVER			
	G	F	T
Book	9	0-2	18
Martin	3	0-0	6
Griffin	10	0-0	20
Whiting	2	2-2	6
Traynor	1	0-0	2
Curl	3	1-3	7
Mills	0	1-2	1
Balentine	2	0-0	4
TOTALS	30	4-9	64

DOVER			
	G	F	T
L. F.	14	18	16-64
L. F.	18	20	14-19-71

LAKE FOREST			
	G	F	T
Bryant	7	3-4	17
Dill	2	7-10	11
Travis	4	1-2	9
Burton	3	3-7	9
Sorden	3	0-0	6
Atkinson	2	0-0	4
Tolson	0	0-0	0
TOTALS	21	14-23	56

WOODBRIDGE			
	G	F	T
Maddox	3	0-0	6
Frisby	6	1-3	13
Brown	1	0-0	2
Elliott	7	1-1	15
Prattis	2	1-2	5
W. Carr	3	0-1	6
B. Carr	0	0-0	0
Smith	1	1-2	3
Batson	7	2-3	16
TOTALS	30	6-11	66

Woodbridge	17	9	17	23-66
Lake Forest	16	17	14	9-56

Harrington Bowling League

Leah S. Wheeler

Jarrell Fuel moved out to a comfortable four game lead in the Harrington Business League Tuesday night as they took all four points from Quillen's Market. Dallas Hayman blasted the boards to be the top kegler for the night with a superb 594 series, which included a 209 game, and Howard Tibbitt rolled a fine 217 game for a 536 set for the victors. Donald Wilson and Warren Steerman bowled good efforts for Quillen's Market.

George Langford rolled a fine 209 game and series effort, and George Collins hit a 203 game and great 565 series as Taylor and Messick took three points from Butler's Fuel to hold onto second place spot in the standings. Robert Wright rolled a 547 series and Larry Larimore bowled a fine 202 game and 528 series for the fuel team as they managed to salvage one point.

The Spoilers took three points from Fry's American as Carl Wright bowled a real good effort for the Spoilers. John Forbes bowled a good effort and Leroy Wheeler added a 202 game as Fry's American was able to get one point for their efforts.

Bill Manship rolled a grand 222 game and a 544 series and Cloyd Bushey hit a 205 game, with Frank Collins adding a fine 543 series for People's Restaurant as the team took three points from McKnatt's Funeral Home. Harold Brode bowled a real good effort for McKnatts.

Robbins' Hardware squashed Penn Central in all games as Herb Robbins and Harry Brown bowled real well for the hardware team. Penn Central could only field a

W. T. Chipman Boys Basketball News

The W. T. Chipman boys basketball team played the Woodbridge Raiders at home for their second game of the season. Final score was Chipman 23, Woodbridge 40. Ricky Loper, 6'3", was Chipman's center, with Billy Johnson and Ronnie Shockley as forwards, rounded out Chipman's rebounding men.

Chipman held off Woodbridge in the first quarter to 4 points. However, Woodbridge was winning 4 to 0. Loper had 3 fouls, and Johnson also had 3.

In the second period Loper and Johnson both committed their 4th foul. Coach Young pulled Loper in hopes of saving him for the second half. At the end of the second period Woodbridge was winning 13-0.

But in the third period both Loper and Johnson fouled out. So without rebounding power, we could do nothing. At the end of the period Woodbridge was ahead 30 to 10.

In the fourth quarter the second teams for Chipman came alive, with the leadership of Kevin Pritchett. Woodbridge, for half the period, kept their team in. In the last period Chipman out-scored Woodbridge 12 to 10.

High scorers for Woodbridge were Nat Neal - 15 points and Glen Morris - 13. High scorers for Chipman were Billy Johnson, Harbie Jarrell, and Billy Moore, each with 4 points.

W. T. Chipman			
	G	F	T
Loper	1	1-2	3
Shockley	2	0-0	4
B. Johnson	2	0-1	4
Jarrell	1	0-0	2
Crouse	1	0-0	2
Dixon	1	0-0	2
Corsey	0	0-0	0
B. Moore	2	0-1	4
Wix	0	0-0	0
K. Johnson	0	0-2	0
Pritchett	1	0-0	2
Witt	1	0-0	2
Harris	1	0-0	2
Nored	0	0-0	0
Coker	0	0-0	0

W. T. Chipman Girls Basketball News

W. T. Chipman Girls' Basketball team started their season Jan. 11, with a victory score of 19-15 over Woodbridge. Captains of the team are Kathy Wheatley, Gwen Harrington, and Tanya Perry. Following girls are on the team: Paulette Williams, Gwen Harrington, Kathy Wheatley, Tanya Perry, Sharon Powell, Betty Winder, Pam Benson, Eileen Ryan, Sandy Clough, Barbara Miller, Denise Pitlick, Linda Stephenson, Lorraine Travis, Brenda Teat, Janie Warren, Claudia Moore, Ruth Griffin. Coach is Violet Testerman, scoring was by: Gwen Harrington 7; Paulette Williams 4; Kathy Wheatley 4; Tanya Perry 2; and Sharon Powell 2.

U.D. Divisions of Education to Hold Seminar on Aspects of Sports

A seminar on the medical aspects of sports will be held on Sat., Jan. 20, in John M. Clayton Hall on the University of Delaware's north campus.

The one-day seminar, sponsored by the university's Divisions of Continuing Education and Physical Education, in cooperation with the Medical Society of Delaware, is designed to present current information, concepts and techniques of the prevention and treatment of athletic injuries and the conditioning of athletes.

The morning program will begin at 8 a.m. with a registration and coffee, followed at 8:30 a.m. by sessions showing various techniques of taping and rehabilitation.

The demonstrations will feature: Joseph Gleck, head trainer for University of Virginia athletic teams, on heat and activities; Donald H. Seger, head trainer for the Philadelphia Phillies baseball team, on arm stretch; Joseph Kuzco, head trainer for the Washington Redskins football team, on training tips; and Keith Handling, U. of D. assistant trainer, on ankle injuries.

Raymond B. Duncan, assistant director of the university's Division of Physical Education, and Dr. Joseph A. Elliott, participants at 10 a.m.

At 10:20 a.m., James E. Nixon, team physician for the Philadelphia Eagles football team and chief of orthopaedic surgery at the University of Pennsylvania and at the Veterans Administration Hospital in Philadelphia, will discuss the topic, "It's Only a Sprained Ankle."

Frank C. McCue III, associate professor of orthopaedics and plastic surgery at the University of Virginia School of Medicine and team physician for U. of V. athletic teams, will talk on "Athletic Injuries of the Hand and Wrist" at 11 a.m.

Luncheon will begin at 11:40 a.m., followed at 12:40 p.m. by a talk on "Anatomy and Physiology of the Knee" by P.M. Palumbo Jr., clinical assistant professor of orthopaedic surgery at Georgetown University School of Medicine, orthopaedic surgeon for Georgetown's athletic teams, and team physician for the Washington Redskins football team.

Joseph S. Torg, assistant professor of orthopaedic surgery at Temple University School of Medicine, team physician for Temple's varsity football team and orthopaedist for the Philadelphia 76ers basketball team, will discuss "The Effect of Pitching on Shoulders and Elbows" at 1:20 p.m.

A panel discussion will begin at 2 p.m., to include the day's seminar speakers. Moderator will be Christopher R. Donoho, team physician for U. of D. athletic teams.

The seminar will conclude after a 3:30 p.m. evaluation session.

Fee is \$25 per person, including instruction, seminar materials and luncheon. Registration must be completed by Jan. 17.

For further information, contact John H. Gill, program specialist in the Division of Continuing Education at Clayton Hall, telephone 738-2741.

U. of D. Repeat Winner of the Washington Touchdown Club's Joseph P. Martin Memorial Award

The University of Delaware, voted the nation's No. 1-ranked college-division team by the A.P. and U.P.I., has been named a repeated winner of the Washington Touchdown Club's Joseph P. Martin Memorial Award to the College-Division Team of the Year. The trophy will be presented at the Club's 38th Annual Awards Banquet Saturday evening, January 27, at the

Sheraton-Park Hotel, General Chairman Charles H. Schools announced.

Delaware joins Virginia Tech's Don Strock, the nation's leading passer and winner of the TD Club's Local College Player award.

Delaware, under its dynamic seven-year Head Coach Tubby Raymond, is the first team to win the Touchdown Club's college-division award three times since its inception in 1956.

Raymond, recently voted Eastern College Division "Coach of the Year" by the New York Football Writers Association, becomes the first Division 2 coach from the Eastern College Athletic Conference ever to be chosen.

The Blue Hens finished the season with its first ever 10-0 record and first undefeated mark since the 1963 team went 8-0. Last year Delaware posted a 10-1 mark including a 72-22 romp over C.W. Post to win its fourth consecutive Boardwalk Bowl. The Blue Hens declined a Boardwalk Bowl bid this season.

For an unprecedented fifth consecutive year, and total of eight, Delaware was voted recipient of the Lambert Cup, presented for outstanding achievement among middle-sized colleges in the East. The Blue Hens were also cited in 1959, 1962 and 1963.

"This is a tremendous honor for our team," said Raymond. "It was especially challenging this year since the runnerup and third teams were both undefeated, and, if we had lost even one of our games, it would have cost us the Cup."

In compiling its first undefeated season in nine years, Delaware outscored their opponents 355-81, including a convincing 64-7 victory over Gettysburg, a 62-0 romp of Maine and a 28-9 win over major college Temple.

Retreat At Buck Hill Falls, Pa.

by Mrs. E. Massimilla

Ministers and Wives of the Peninsula area will meet for a retreat on January 22 to 24 at Buck Hill Falls, Pa. This is an annual event. The retreat will be opened by worship and a meditation by Bishop James K. Matthews. Other speakers include Rev. Carlyle Marney, missionary and author of several books; Francis H. Williamson, well known composer and organist, and many others.



Mrs. Scott Alan Spoons

Miss Karen Calhoun - Scott Alan Spoons Wed Dec. 23 in Texas

Miss Karen Cecilia Calhoun and Scott Alan Spoons were married on Dec. 23 in Holy Angels Catholic Church in San Angelo, Texas.

The bride is the daughter of Dr. and Mrs. Millard C. Calhoun, of San Angelo, and the granddaughter of Mr. and Mrs. Emil P. Gerardi, Sr., of Harrington, and Mr. and Mrs. Medford Calhoun, of Greenwood. Mr. and Mrs. Paul R. A. Spoons, Jr., of McGregor, Texas, are the parents of the groom.

The bride's candlelight gown was fashioned with a sheer yoke trimmed in lace and a standup lace collar. A Juliet cap held her candlelight veil and she carried a bouquet of white baby's breath, red and white roses and holly.

The bride's sister, Miss Wanda Calhoun was maid of honor. The groom's sister, Miss Suzanne Spoons was bridesmaid. They wore red velvet empire dresses and carried bouquets of white mums and holly.

The groom's brother, Paul

R. A. Spoons, 77, was best man.

The bride's brother, Daniel Calhoun, was groomsman. Ivan McGowen and John Milam, of Waco, Texas, were ushers. Candelighters were altar boys from the church. Rev. Harry Stegman, of St. Eugene's Catholic Church, of McGregor, Texas, performed the ceremony. The groom's father was organist.

The bride's parents were reception hosts at the Ramada Inn, in San Angelo.

Houseparty members for the reception were Miss Donna Chalmers, of Harrington, Miss Cheryl Christmas and Miss Betty Walters, of McGregor, and Mrs. Ivan McGowen and Miss Debbie Pierce, both of Waco.

Mrs. Spoons is a dental assistant and her husband is employed by a cable firm.

After a short wedding trip, the couple are living in Waco. The bridegroom's parents were hosts for the rehearsal dinner at a San Angelo steak house.



Miss Betty Anne Wyatt

Wyatt - Price To Wed April 14th

Mr. and Mrs. V. Frank Nalbhone, of Felton, announce the engagement of their daughter, Betty Anne Wyatt, to Michael Leigh Price, son of Mr. and Mrs. Warren K. Price, of Viola.

Miss Wyatt is a 1972 graduate of Lake Forest High School and she currently attends the Delaware Technical and Community College at Georgetown.

Her fiance is a 1969 graduate of Felton High School and he will graduate from Delaware State College in May.

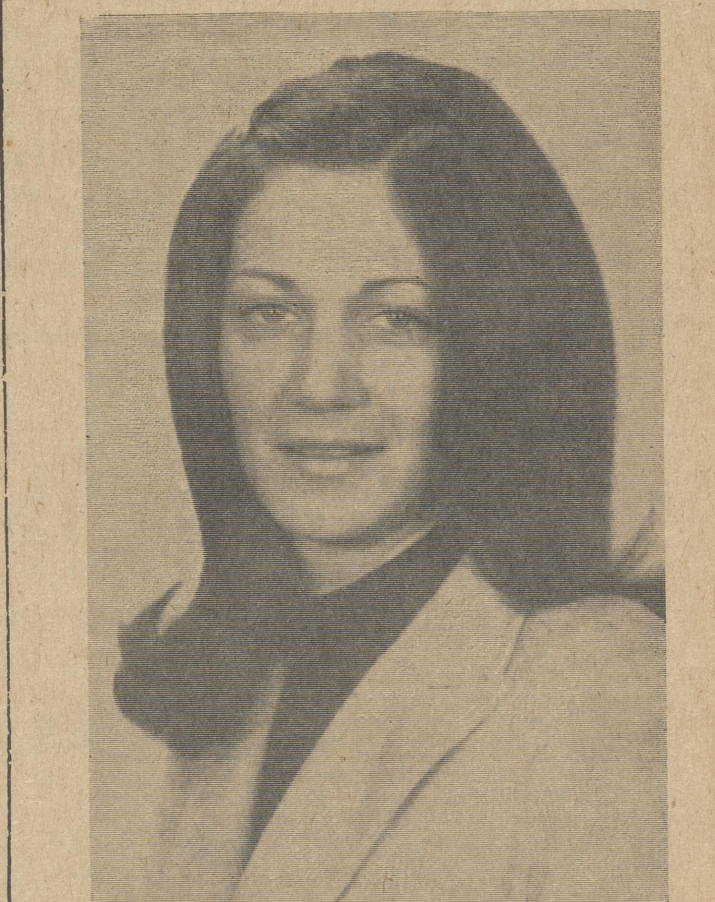
During the summer of 1972 he served as the assistant pastor at Wyoming United Methodist Church.

The couple plan an April 14th wedding.

Mrs. Samuel Dutko

Mrs. Jean Elizabeth Dutko, 54, of near Felton, was dead on arrival Sunday at Kent General Hospital. She had been ill with cancer.

She is survived by her husband, Samuel Dutko. Services will be this afternoon at 1 at the Berry Funeral Home, Felton. Interment will be in Odd Fellows Cemetery, Camden. In lieu of flowers, the family suggests contributions to the American Cancer Society, Medical Arts Building, 1001 S. Bradford St., Dover.



Classified & get the job done

RATE SCHEDULE

All ads in this column must be paid in advance. This is the only way in which orders will be accepted for want ads. No ad order accepted for less than \$1 for one insertion, 25 words or less, which includes name and address, initials and telephone number which counts as one word each.

Any ad having more than 25 words, additional charge is 4c per word for one insertion.

Repeat insertion minimum charge is 75c per week with 5c per word additional for ads having more than 25 words.

With Black Face Print or CAPITALS regular charge is 5c per word.

Classified

Classified Display, per column inch	\$1.25
Public sale, column inch	\$1.50
Card of Thanks, Memorial, per line	15 cents
(Minimum \$1.50)	
Legal Advertising, per col. inch	\$2.80

Accounts of bakes, dinners, rummage sales, entertainments, are considered as advertisements. If you charge, we charge.

FOR SALE

Over 1,000 Remnants
Sample House Used Rugs
On Display
Fabulous Discounts
On Area Rugs And
Wall To Wall Installations
AIR BASE
CARPET MART
1138 S. DuPont Hwy Dover
678-0970
A 8t 1/18m

Oak Firewood For Sale.
Delivered! Call 284-4505.
L 4t 1/18m

71 Plymouth Duster "918"
Mag wheels, tape deck, Dico
8,000 RPM tach, 670x14 tires.
Asking \$2,000 or best offer.
Call 284-4476 after 6 p.m.
R 1t 1/18m

1971 Custom 370 Honda.
Must sell. Call 674-1702 after
6 p.m. Ask for Glenn.
G 1t 1/18m

NEW & USED DOORS FOR SALE - Also good used lumber. Phone 422-6997.
H 9/14m

FOR SALE - Rower exerciser, 23" B & W TV, child's coats, size 8, assorted Jr. size clothing, 2 men's coats, size 36, woman's coat, size 11. Call 349-4766.
A 2t 1/18a

Typewriters, adding machines, calculators, cash registers, new and used. Electronic calculators priced under \$100. OLYMPIA Royal, Remington, Olivetti, SCM, Victor, Pat Padgett Company. Sales - Services, and Rentals. Frankford Ave., Frankford 732-9329.
P 1t 1/4m

1966 Pontiac Catalina Wagon. P-S, P-B, Power windows, factory air, good condition. 674-4337.
H 1t 1/18m

1964 Ford Station Wagon, 4 door, 3 seat, 8 cylinder, automatic, P-S, P-B, Clean, \$375. Phone 734-9331.
C 1t 1/18m

1969 VW Squareback, automatic transmission, radio. Real nice. \$1,350. Phone 734-9331.
C 1t 1/18m

2 furnished apartments plus office & warehouse space. For Sale on 5 points in Rising Sun, excellent condition. \$31,000 firm - 15 percent down, will assume 7 percent mortgage. Call 697-7195, or after 4 p.m. 674-3647.
G 1t 1/18m

Porous tip refills for Parker Touche 11 pens, three for 98c. Journal Office. tf

1969 Pontiac Bonneville, air conditioning, p-w, p-b, p-s, good condition. Call after 5 p.m. 335-3161.
R 1t 1/18m

FOR SALE - Hay, clover, and lespedeza stubble, 75c per bale. Norman Cohee, Greensboro, 482-8222.
C 2t 1/18

FOR SALE - 1965 Olds Dynamic 88 Convertible, 1 owner, white with black top. Call 629-2111.
T 4t 2/1a

FOR SALE - 1968 Terry Travel Trailer, 18 ft. 8 in. long. Good condition. Awning & Hitch. \$2,400. Call 734-7356.
S 2t 1/25m

Too Late For Christmas, But Just Right For The Next Hunting Season. Registered AKC Labrador Pups. Call 674-4580 after 5 p.m. or anytime on weekends.
D 1t 1/18m

Close to Greenwood, 3 yr. old Rancher, 3 BR, utility room, bath, family room, dining room, garage. About 1/2 acres of land. Sizemore & Ellis Realty Co. \$18,500.00. 629-6688.
S 1t 1/18a

For Sale - Envelopes - 100 plain 6 1/2 env. \$3.75; 100 window 6 1/2 env. \$8.50; 100 No 10 env. \$10.00 The Harrington Journal Office.

Fully equipped and operating hen-layer Farm, 6 miles from Bridgeville, 5 a. a., 4a. tillable. Farm house on property. Income averages \$9,000.00 per year. Complete. Sizemore & Ellis Realty, 629-6688.
S 1t 1/18a

Classified Rates

CREDIT SERVICE
A bookkeeping charge of 25¢ will be made for all Classified Ads not paid in advance and an additional charge of 25¢ for each 30 days bills remain unpaid

RATES ARE NET

FOR SALE

HOME FOR SALE - 1 1/2 story home, 3 bedrooms, large kitchen with pantry, extra large living room and dining room, and bath. Enclosed porch, many large walk-in closets. Car-port, 2 car garage and work shop. Landscaped lot, good condition. Sizemore & Ellis Realty, Call 629-6688.
S 1t 1/18a

2 Residential Lots, Resort Community on Eastern Shore of Southern Florida, Disney Land Proximity, very reasonable. Call 734-5634 after 5 p.m.
C 2t 1/18m

100 Pieces of Avon Bottles \$4 each. Large Piggy Back Ampeg Amplifier & Bass Guitar. \$175. Call 697-2920.
W 2t 1/18m

Signet Piccolo, by Selmar, good condition. Call 629-6150.
R 1t 1/18a

1971 Walker Trailer, completely furnished, 12x52, 2 bedrooms, extras include washer and dryer, 30' antenna tower, complete under paneling, 275 gal. tank. Call 335-3647.
H 2t 1/25m

For Sale - '64 Chevy Impala, V-8, good condition, \$395. Phone 678-0898.
H 1t 1/18m

1970 Fleetwood Custom Deluxe - 12x60, 2 bedroom, double insulation, air conditioning, washer, garage disposal. Phone 678-1721.
W 1t 1/18m

BAY MARE, 14.2 hands, green broke western or english, gentle with children. Call after 3:30 674-3374.
S 1t 1/18m

For Sale 1953 Buick, good mechanical and running condition and 275 oil tank with four legs and gauge. Call 398-3114.
B 2t 1/18

For Sale - Champion line Beagles and Black Scottish Terriers. At STUD only, Toy Poodle, apricot breeding, Mayhogan Stable Collie, Pekinges white with brown. 697-3553.
G 2t 1/18m

Wilkie Furniture Co.
DISCOUNT PRICES ON NEW AND USED Furniture & Appliances
200 North St.
MILFORD 422-4584

FOR SALE - NEW HOMES FOR SALE BUILT to your specifications on your lot, or will sell lot and house for small down payment to qualified persons. E. M. Clendaniel Home Improvements 422-5744.
tf 8-26m

FIREPLACE WOOD & mulch. We deliver. Phone 697-1605.
P 1t 12/21m

WALLPAPER and PAINT - Large selection in stock. A-go Linoleum Co., Milford 421-8431.
tf 12-8

FOR SALE - 1 gas cook stove (good); 1 large oil burner (good); 1 small oil burner; 2 upholstered chairs; 2 wardrobes, one with full length mirror in door; metal book shelves; 1 wringer washing machine; 1 metal iron bed (single); 1 large table; 1 small rug; and 1 corn sheller. Call 398-8666.
2t 1/18

WALLPAPER - New patterns just in. Taylor's Hardware Co. 398-3291.
T 4t 2/20m

LINOLEUM - Cushioned and regular, in three widths 6, 9 and 12 ft. Argo Linoleum Co., Milford 422-8431.
tf 5-22

FOR SALE

14' Fiberglass Boat, 30 H.P. electric start Johnson full control, tilt trailer, \$325. Phone 335-5602.
B 1t 1/18m

'66 Plymouth Satellite, 4 speed, bucket seats, 383 engine \$400. Call 284-4741 after 5 p.m.
F 1t 1/18m

1969 Ford Backhoe 5,500, 1970 International Tractor 444 - 7 ft. 6 in. Bush hog, box scraper, rake, disk; 1959 Ford Dump Truck, 1970 3 axle trailer, 697-2657.
M 1t 1/18m

1971 1/2 CB350 Honda For Sale - Excellent condition. Call 422-6584 after 6 p.m.
W 2t 1/25m

For Sale - 1963 Chevrolet station wagon. \$295. Call 398-8742 or 398-3846.
M 1t 1/18

1970 Pontiac Catalina Station Wagon, 3 Seat, air cond., P-S, P-B, auto., excellent condition. Call 629-8398.
S 1t 1/18a

1969 Chevy Pickup, 6 cyl., std. shift, long body, 24,000 original miles. Excellent condition. \$2,000. Call 629-4996.
E 1t 1/18a

1950 Ford Grain Dump truck with 13' body - \$600.00; 1953 Dodge grain truck - \$500.00; 13' culpacker \$125; 130 gallon Clark weed sprayer - \$150.00; Ford 8N tractor and loader - \$700.00; Massey Ferguson 65 Tractor and 10' disc, 3 pt. hitch - \$1,000.00; Steam Jenny - \$100.00; Massey Ferguson 10 HP riding garden tractor with mower and cultivator - \$600.00. Call 349-4078.
A 1t 1/18a

3 Edsels and 2 Kaisers, need repairs. Make offer for one or all. Call 349-4078.
A 1t 1/18a

Reduce excess fluids with Fluidex \$1.99. Lose Weight with Dex-A-Diet capsules \$1.98 at Harrington Pharmacy.
H 2t 1/25

1964 Valiant 4 dr. Sedan, new tires, good condition - \$325.00. Call 629-9600 after 6 p.m.
B 2t 1/25a

Magnavox Component style AM-FM radio, 8 track tape player. \$85.00. Call 629-2386.
S 1t 1/18a

Bargain seafood - Company store open to public every Thursday and Friday 10 to 3:30. Excellent buys, good grade A and irregular fish sticks and TV fish portions. Special 5 lb. box \$2.25 (irr.) Mark 7 Seafood, Houston, Del. 422-9631.
M 2t 1/25

For Sale - '64 Chevy Impala, V-8, good condition, \$395. Phone 678-0898.
H 1t 1/18m

1970 Fleetwood Custom Deluxe - 12x60, 2 bedroom, double insulation, air conditioning, washer, garage disposal. Phone 678-1721.
W 1t 1/18m

For Sale - '64 Chevy Impala, V-8, good condition, \$395. Phone 678-0898.
H 1t 1/18m

1970 Fleetwood Custom Deluxe - 12x60, 2 bedroom, double insulation, air conditioning, washer, garage disposal. Phone 678-1721.
W 1t 1/18m

BAY MARE, 14.2 hands, green broke western or english, gentle with children. Call after 3:30 674-3374.
S 1t 1/18m

For Sale 1953 Buick, good mechanical and running condition and 275 oil tank with four legs and gauge. Call 398-3114.
B 2t 1/18

For Sale - Champion line Beagles and Black Scottish Terriers. At STUD only, Toy Poodle, apricot breeding, Mayhogan Stable Collie, Pekinges white with brown. 697-3553.
G 2t 1/18m

Wilkie Furniture Co.
DISCOUNT PRICES ON NEW AND USED Furniture & Appliances
200 North St.
MILFORD 422-4584

FOR SALE - NEW HOMES FOR SALE BUILT to your specifications on your lot, or will sell lot and house for small down payment to qualified persons. E. M. Clendaniel Home Improvements 422-5744.
tf 8-26m

FIREPLACE WOOD & mulch. We deliver. Phone 697-1605.
P 1t 12/21m

WALLPAPER and PAINT - Large selection in stock. A-go Linoleum Co., Milford 421-8431.
tf 12-8

FOR SALE - 1 gas cook stove (good); 1 large oil burner (good); 1 small oil burner; 2 upholstered chairs; 2 wardrobes, one with full length mirror in door; metal book shelves; 1 wringer washing machine; 1 metal iron bed (single); 1 large table; 1 small rug; and 1 corn sheller. Call 398-8666.
2t 1/18

WALLPAPER - New patterns just in. Taylor's Hardware Co. 398-3291.
T 4t 2/20m

LINOLEUM - Cushioned and regular, in three widths 6, 9 and 12 ft. Argo Linoleum Co., Milford 422-8431.
tf 5-22

SERVICES

Trees trimmed and removed - stumps removed, no lawn damage, low cost, free estimates. Call 697-1605.
P 1t 12/21m

TAX RETURNS. NOW is the time to plan your TAX Strategy. We earn our fee with tax savings for you - Payrolls, Quarterlies, and Consultations. Community Business Service, A Division of K & K Enterprises, Ltd., Corner of Governors Ave. and Division St., Dover. Call for an appointment now. 674-1174.
K 5t 2/15m

Richard's Hill Sunday Buffet. Serving 12:30 to 4. Price \$3.00, no reservations required. Delicious oysters now on menu. 349-4150.
J 1t 11/16a

ALL that certain tract, piece and parcel of land situated, lying and being in the third Hundred, Kent County and State of Delaware, lying on the easterly side of the westerly side of Route No. 122 near Milford-Thompsonville Road, Milford, Kent County, State of Delaware, is hereby offered for sale by public vendue on the premises No. 122 near Milford-Thompsonville Road, Milford, Kent County, State of Delaware, on **FRIDAY, JANUARY 26, 1973** at 11:00 A.M., Eastern Standard Time.

ALL that certain tract, piece and parcel of land situated, lying and being in the third Hundred, Kent County and State of Delaware, lying on the easterly side of the westerly side of Route No. 122 near Milford-Thompsonville Road, Milford, Kent County, State of Delaware, is hereby offered for sale by public vendue on the premises No. 122 near Milford-Thompsonville Road, Milford, Kent County, State of Delaware, on **FRIDAY, JANUARY 26, 1973** at 11:00 A.M., Eastern Standard Time.

ALL that certain tract, piece and parcel of land situated, lying and being in the third Hundred, Kent County and State of Delaware, lying on the easterly side of the westerly side of Route No. 122 near Milford-Thompsonville Road, Milford, Kent County, State of Delaware, is hereby offered for sale by public vendue on the premises No. 122 near Milford-Thompsonville Road, Milford, Kent County, State of Delaware, on **FRIDAY, JANUARY 26, 1973** at 11:00 A.M., Eastern Standard Time.

ALL that certain tract, piece and parcel of land situated, lying and being in the third Hundred, Kent County and State of Delaware, lying on the easterly side of the westerly side of Route No. 122 near Milford-Thompsonville Road, Milford, Kent County, State of Delaware, is hereby offered for sale by public vendue on the premises No. 122 near Milford-Thompsonville Road, Milford, Kent County, State of Delaware, on **FRIDAY, JANUARY 26, 1973** at 11:00 A.M., Eastern Standard Time.

ALL that certain tract, piece and parcel of land situated, lying and being in the third Hundred, Kent County and State of Delaware, lying on the easterly side of the westerly side of Route No. 122 near Milford-Thompsonville Road, Milford, Kent County, State of Delaware, is hereby offered for sale by public vendue on the premises No. 122 near Milford-Thompsonville Road, Milford, Kent County, State of Delaware, on **FRIDAY, JANUARY 26, 1973** at 11:00 A.M., Eastern Standard Time.

ALL that certain tract, piece and parcel of land situated, lying and being in the third Hundred, Kent County and State of Delaware, lying on the easterly side of the westerly side of Route No. 122 near Milford-Thompsonville Road, Milford, Kent County, State of Delaware, is hereby offered for sale by public vendue on the premises No. 122 near Milford-Thompsonville Road, Milford, Kent County, State of Delaware, on **FRIDAY, JANUARY 26, 1973** at 11:00 A.M., Eastern Standard Time.

ALL that certain tract, piece and parcel of land situated, lying and being in the third Hundred, Kent County and State of Delaware, lying on the easterly side of the westerly side of Route No. 122 near Milford-Thompsonville Road, Milford, Kent County, State of Delaware, is hereby offered for sale by public vendue on the premises No. 122 near Milford-Thompsonville Road, Milford, Kent County, State of Delaware, on **FRIDAY, JANUARY 26, 1973** at 11:00 A.M., Eastern Standard Time.

ALL that certain tract, piece and parcel of land situated, lying and being in the third Hundred, Kent County and State of Delaware, lying on the easterly side of the westerly side of Route No. 122 near Milford-Thompsonville Road, Milford, Kent County, State of Delaware, is hereby offered for sale by public vendue on the premises No. 122 near Milford-Thompsonville Road, Milford, Kent County, State of Delaware, on **FRIDAY, JANUARY 26, 1973** at 11:00 A.M., Eastern Standard Time.

ALL that certain tract, piece and parcel of land situated, lying and being in the third Hundred, Kent County and State of Delaware, lying on the easterly side of the westerly side of Route No. 122 near Milford-Thompsonville Road, Milford, Kent County, State of Delaware, is hereby offered for sale by public vendue on the premises No. 122 near Milford-Thompsonville Road, Milford, Kent County, State of Delaware, on **FRIDAY, JANUARY 26, 1973** at 11:00 A.M., Eastern Standard Time.

ALL that certain tract, piece and parcel of land situated, lying and being in the third Hundred, Kent County and State of Delaware, lying on the easterly side of the westerly side of Route No. 122 near Milford-Thompsonville Road, Milford, Kent County, State of Delaware, is hereby offered for sale by public vendue on the premises No. 122 near Milford-Thompsonville Road, Milford, Kent County, State of Delaware, on **FRIDAY, JANUARY 26, 1973** at 11:00 A.M., Eastern Standard Time.

ALL that certain tract, piece and parcel of land situated, lying and being in the third Hundred, Kent County and State of Delaware, lying on the easterly side of the westerly side of Route No. 122 near Milford-Thompsonville Road, Milford, Kent County, State of Delaware, is hereby offered for sale by public vendue on the premises No. 122 near Milford-Thompsonville Road, Milford, Kent County, State of Delaware, on **FRIDAY, JANUARY 26, 1973** at 11:00 A.M., Eastern Standard Time.

ALL that certain tract, piece and parcel of land situated, lying and being in the third Hundred, Kent County and State of Delaware, lying on the easterly side of the westerly side of Route No. 122 near Milford-Thompsonville Road, Milford, Kent County, State of Delaware, is hereby offered for sale by public vendue on the premises No. 122 near Milford-Thompsonville Road, Milford, Kent County, State of Delaware, on **FRIDAY, JANUARY 26, 1973** at 11:00 A.M., Eastern Standard Time.

ALL that certain tract, piece and parcel of land situated, lying and being in the third Hundred, Kent County and State of Delaware, lying on the easterly side of the westerly side of Route No. 122 near Milford-Thompsonville Road, Milford, Kent County, State of Delaware, is hereby offered for sale by public vendue on the premises No. 122 near Milford-Thompsonville Road, Milford, Kent County, State of Delaware, on **FRIDAY, JANUARY 26, 1973** at 11:00 A.M., Eastern Standard Time.

ALL that certain tract, piece and parcel of land situated, lying and being in the third Hundred, Kent County and State of Delaware, lying on the easterly side of the westerly side of Route No. 122 near Milford-Thompsonville Road, Milford, Kent County, State of Delaware, is hereby offered for sale by public vendue on the premises No. 122 near Milford-Thompsonville Road, Milford, Kent County, State of Delaware, on **FRIDAY, JANUARY 26, 1973** at 11:00 A.M., Eastern Standard Time.

ALL that certain tract, piece and parcel of land situated, lying and being in the third Hundred, Kent County and State of Delaware, lying on the easterly side of the westerly side of Route No. 122 near Milford-Thompsonville Road, Milford, Kent County, State of Delaware, is hereby offered for sale by public vendue on the premises No. 122 near Milford-Thompsonville Road, Milford, Kent County, State of Delaware, on **FRIDAY, JANUARY 26, 1973** at 11:00 A.M., Eastern Standard Time.

ALL that certain tract, piece and parcel of land situated, lying and being in the third Hundred, Kent County and State of Delaware, lying on the easterly side of the westerly side of Route No. 122 near Milford-Thompsonville Road, Milford, Kent County, State of Delaware, is hereby offered for sale by public vendue on the premises No. 122 near Milford-Thompsonville Road, Milford, Kent County, State of Delaware, on **FRIDAY, JANUARY 26, 1973** at 11:00 A.M., Eastern Standard Time.

ALL that certain tract, piece and parcel of land situated, lying and being in the third Hundred, Kent County and State of Delaware, lying on the easterly side of the westerly side of Route No. 122 near Milford-Thompsonville Road, Milford, Kent County, State of Delaware, is hereby offered for sale by public vendue on the premises No. 122 near Milford-Thompsonville Road, Milford, Kent County, State of Delaware, on **FRIDAY, JANUARY 26, 1973** at 11:00 A.M., Eastern Standard Time.

ALL that certain tract, piece and parcel of land situated, lying and being in the third Hundred, Kent County and State of Delaware, lying on the easterly side of the westerly side of Route No. 122 near Milford-Thompsonville Road, Milford, Kent County, State of Delaware, is hereby offered for sale by public vendue on the premises No. 122 near Milford-Thompsonville Road, Milford, Kent County, State of Delaware, on **FRIDAY, JANUARY 26, 1973** at 11:00 A.M., Eastern Standard Time.

ALL that certain tract, piece and parcel of land situated, lying and being in the third Hundred, Kent County and State of Delaware, lying on the easterly side of the westerly side of Route No. 122 near Milford-Thompsonville Road, Milford, Kent County, State of Delaware, is hereby offered for sale by public vendue on the premises No. 122 near Milford-Thompsonville Road, Milford, Kent County, State of Delaware, on **FRIDAY, JANUARY 26, 1973** at 11:00 A.M., Eastern Standard Time.

ALL that certain tract, piece and parcel of land situated, lying and being in the third Hundred, Kent County and State of Delaware, lying on the easterly side of the westerly side of Route No. 122 near Milford-Thompsonville Road, Milford, Kent County, State of Delaware, is hereby offered for sale by public vendue on the premises No. 122 near Milford-Thompsonville Road, Milford, Kent County, State of Delaware, on **FRIDAY, JANUARY 26, 1973** at 11:00 A.M., Eastern Standard Time.

ALL that certain tract, piece and parcel of land situated, lying and being in the third Hundred, Kent County and State of Delaware, lying on the easterly side of the westerly side of Route No. 122 near Milford-Thompsonville Road, Milford, Kent County, State of Delaware, is hereby offered for sale by public vendue on the premises No. 122 near Milford-Thompsonville Road, Milford, Kent County, State of Delaware, on **FRIDAY, JANUARY 26, 1973** at 11:00 A.M., Eastern Standard Time.

ALL that certain tract, piece and parcel of land situated, lying and being in the third Hundred, Kent County and State of Delaware, lying on the easterly side of the westerly side of Route No. 122 near Milford-Thompsonville Road, Milford, Kent County, State of Delaware, is hereby offered for sale by public vendue on the premises No. 122 near Milford-Thompsonville Road, Milford, Kent County, State of Delaware, on **FRIDAY, JANUARY 26, 1973** at 11:00 A.M., Eastern Standard Time.

ALL that certain tract, piece and parcel of land situated, lying and being in the third Hundred, Kent County and State of Delaware, lying on the easterly side of the westerly side of Route No. 122 near Milford-Thompsonville Road, Milford, Kent County, State of Delaware, is hereby offered for sale by public vendue on the premises No. 122 near Milford-Thompsonville Road, Milford, Kent County, State of Delaware, on **FRIDAY, JANUARY 26, 1973** at 11:00 A.M., Eastern Standard Time.

ALL that certain tract, piece and parcel of land situated, lying and being in the third Hundred, Kent County and State of Delaware, lying on the easterly side of the westerly side of Route No. 122 near Milford-Thompsonville Road, Milford, Kent County, State of Delaware, is hereby offered for sale by public vendue on the premises No. 122 near Milford-Thompsonville Road, Milford, Kent County, State of Delaware, on **FRIDAY, JANUARY 26, 1973** at 11:00 A.M., Eastern Standard Time.

ALL that certain tract, piece and parcel of land situated, lying and being in the third Hundred, Kent County and State of Delaware, lying on the easterly side of the westerly side of Route No. 122 near Milford-Thompsonville Road, Milford, Kent County, State of Delaware, is hereby offered for sale by public vendue on the premises No. 122 near Milford-Thompsonville Road, Milford, Kent County, State of Delaware, on **FRIDAY, JANUARY 26, 1973** at 11:00 A.M., Eastern Standard Time.

ALL that certain tract, piece and parcel of land situated, lying and being in the third Hundred, Kent County and State of Delaware, lying on the easterly side of the westerly side of Route No. 122 near Milford-Thompsonville Road, Milford, Kent County, State of Delaware, is hereby offered for sale by public vendue on the premises No. 122 near Milford-Thompsonville Road, Milford, Kent County, State of Delaware, on **FRIDAY, JANUARY 26, 1973** at 11:00 A.M., Eastern Standard Time.

ALL that certain tract, piece and parcel of land situated, lying and being in the third Hundred, Kent County and State of Delaware, lying on the easterly side of the westerly side of Route No. 122 near Milford-Thompsonville Road, Milford, Kent County, State of Delaware, is hereby offered for sale by public vendue on the premises No. 122 near Milford-Thompsonville Road, Milford, Kent County, State of Delaware, on **FRIDAY, JANUARY 26, 1973** at 11:00 A.M., Eastern Standard Time.

ALL that certain tract, piece and parcel of land situated, lying and being in the third Hundred, Kent County and State of Delaware, lying on the easterly side of the westerly side of Route No. 122 near Milford-Thompsonville Road, Milford, Kent County, State of Delaware, is hereby offered for sale by public vend

Super Saving Discounts

Lancaster Brand Steak Sale!



FULL CUT SIRLOIN
Including the Tenderloin
\$1.26 lb.

PORTERHOUSE
\$1.56 lb.

CLUB STEAKS
\$1.66 lb.

CUBE STEAKS
\$1.46 lb.

FIVE VARIETIES, LANCASTER BRAND
Luncheon Meats 1-lb. pkg. 88¢
DELICIOUS BULK
Polish Sausage lb. 79¢
DELICIOUS ECKRICH BRAND
Polish Sausage lb. \$1.29
TASTY ECKRICH
Smoked Sausage lb. \$1.29

FAMOUS ESSKAY BRAND
Rope Sausage lb. 99¢
G.WALTNEY, MILD OR HOT
Sausage Meat 1-lb. pkg. 75¢
SUPER SAVING DISCOUNT! CHUNK
Goetze Bologna lb. 69¢
OSCAR MATYER BRAND
Sausage Links lb. 99¢

EASY TO FIX! . . . G.WALTNEY
Buffet Hams
\$1.59 lb.

DELICIOUS, LEAN AND MEATY
Spare Ribs
76¢ lb.



Lancaster Brand Lamb Sale!

LEGS OF LAMB
WHOLE OR BUTT HALF
99¢ lb.

SHOULDER ROAST
SQUARE CUT
88¢ lb.

SLICED SHOULDER OF
Lamb Roast lb. 95¢
BONELESS SHOULDER
Lamb Roast lb. \$1.29
FRESH AND DELICIOUS
Lamb Patties lb. 89¢
IN 3 LB. OR LARGER UNITS
Fresh Ground Chuck lb. 89¢
HEAT & EAT, FULLY COOKED
Fish Cakes lb. 69¢

DELICIOUS LAMB
Shoulder Chops lb. 99¢
SUPER SAVING DISCOUNT!
Rib Lamb Chops \$1.59
SUPER SAVING DISCOUNT!
Loin Lamb Chops \$1.69
WILLIAMSBURG COUNTRY
Ham Slices 13-oz. pkg. \$1.59
HEAT & EAT FULLY COOKED
Haddock Fillet lb. 97¢

SER VICE DELICATESSEN!
AVAILABLE ONLY IN STORES WITH SERVICE DELI!
JUMBO LANCASTER BRAND OR

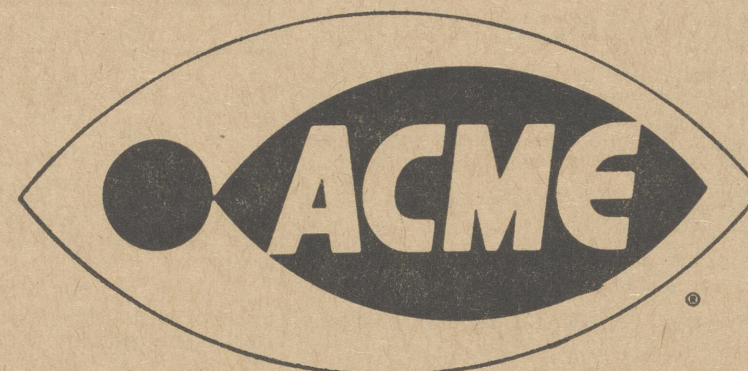
Goetze Bologna lb. 79¢
DELICIOUS GOETZE OR LANCASTER BRAND
Pickle Loaf 1/2-lb. 49¢
SLICED TO ORDER, GOETZE OR LANCASTER BRAND
Olive Loaf 1/2-lb. 49¢
SUPER SAVING DISCOUNT! BAKED
Virginia Ham 1/2-lb. 69¢
DELICIOUS ESSKAY
Chicken Roll 1/2-lb. 69¢
ESSKAY, NATURAL CASING (1/2-LB.)
Braunschweiger 59¢
SUPER SAVING DISCOUNT! MEDIUM RARE
Cooked Beef 1/2-lb. 69¢
SLICED TO ORDER, TASTY
Lebanon BOLOGNA lb. \$1.19

QUICK & EASY FROZEN MEATS!
LANCASTER BRAND, 8-ALL
Beef Steaks 1-lb. 2-oz. pkg. \$1.19
CHICKEN, TURKEY OR BEEF
Farmdale Pies 8-oz. pkg. 23¢
IN A BASKET, DELICIOUS MORTONS
Chicken 2-lb. \$2.27
BEACH HAVEN TASTY
Fish Sticks 2 1/2-lb. pkg. 98¢

Prices Effective through Saturday, Jan. 20, 1973.
Quantity Rights Reserved.

SUPER SAVING DISCOUNT!
Goetze Chunk Braunschweiger
59¢ lb.

SUPER SAVING DISCOUNT!
Fresh Baked Pan Rolls
3 pkgs. of 12 **\$1**



You're going to like it here!

SUPER SAVER

SEE HOW MUCH A DOLLAR CAN BUY DURING OUR SUPER SAVING

Dollar Sale

FARMDALE PEAS (1-LB.)
GREEN BEANS FARMDALE CUT (1-LB.)
FARMDALE WHOLE OR CORN (1-LB.)
IDEAL KIDNEY BEANS (16-OZ.) OR IDEAL APPLE SAUCE (1-LB.)

6 for **\$1**

PRINCESS WHITE, YELLOW OR PINK FACIAL TISSUES (BOX OF 200)
PRINCESS MARGARINE (1-LB. QTRS.) IDEAL FROZEN CUT CORN, GREEN PEAS OR CHOPPED BROCCOLI (10-OZ. PKGS.)

5 for **\$1**

IDEAL OR SUPER SAVER BRAND MUSHROOM STEMS & PIECES (4-OZ.)
GEISHA BRAND SLICED, CHUNK OR CRUSHED PINEAPPLE (1 1/2-LB. CAN)

4 for **\$1**

DUNCAN HINES YELLOW, DEVIL'S FOOD, APPLE RAISIN, LEMON SUPREME, OR BUTTER GOLDEN CAKE MIXES (18-OZ.) SPEED-UP CLEAR OR PINK LIQUID DETERGENT (1-QT.) FABRIC SOFTENER (1/2-GAL.) BLUE BONNET MARGARINE (1-LB. QTRS.)

3 for **\$1**

FAMOUS GLAD BRAND (PKG. OF 15)
Kitchen Bags 59¢
FAMOUS GLAD BRAND (PKG. OF 10)
Trash Bags 69¢

CHERRY, ORANGE OR GRAPE (1-QT., 14-OZ. CANS)
Hi-C Drinks 3 for \$1
STRAWBERRY OR BLACK BING CHERRY (1-QT. JAR)
Stratford Preserves 69¢

CARBONA FOAM (1 1/2-PT. CAN)
Rug Shampoo 89¢
SUPER SAVING DISCOUNT! (2-LB. PKG.)
Ideal Fig Bars 39¢

DISCOUNTS IN DAIRYLAND!

MRS. FILBERT'S GOLDEN (1-LB. BOWL)
Soft Margarine 49¢
DELICIOUS CHEESE SPREAD (1-LB. LOAF)
Kraft Velveeta 75¢
FRESH CREAMERY (1-LB. SOLID)
Farmdale Butter 75¢
SWET MILK OR BUTTERMILK (8-OZ. CANS)
Pillsbury Biscuits 4 for 39¢

FROZEN FOOD DISCOUNTS!

BIRD'S EYE AMERICAN KITCHENS (12-OZ. PKG.)
Tasti-Fries 29¢
HANDY SNACK TRAY (7 1/2-OZ. PKG.)
Jeno's Pizzas 89¢
IDEAL FROZEN (1-PT. CAN)
Orange Juice 47¢

HEALTH & BEAUTY AIDS!

FAST COLD RELIEF (PKG. OF 10)
Contac Capsules \$1.09
VICK'S FORMULA 44 (6-OZ. BTL.)
Cough Syrup \$1.45
EFFECTIVE COLD MEDICINE (6-OZ. BTL.)
Vick's Nyquil \$1.19

Mugs and Bowls

New Wet Look!
In Assorted Colors! **4** for **\$1**

SUPER SAVING DISCOUNT! 100 SIZE, JUICY TEMPLE
Oranges doz. **75¢**

Red Emperor Grapes lb. 49¢
Pure Orange Juice SUN FRESH 1/2-gal. 79¢
New Florida Celery large stalk 29¢
Delicious Apples WASHINGTON STATE RED OR GOLDEN lb. 29¢
Fresh English Walnuts 1-lb. IN SHELL bag 67¢

Clip And Save This Tempting Waldorf Salad Recipe!

WALDORF SALAD

2-cups diced apples
1-cup cut celery
1/2-cup broken walnuts
3/4-cup mayonnaise
1-tablespoon sugar
1/2-teaspoon lemon juice
dash of salt

Combine apples, celery and walnuts. Blend together mayonnaise, sugar, lemon juice and salt. Fold into apple mixture. Chill. Serve in individual lettuce cups or in a lettuce lined salad bowl. Garnish with maraschino cherries!

Save 12¢ WITH THIS COUPON (MFG-6)
Staley's Syrup
PERFECT FOR PANCAKES
1 1/2-pt. btl. **49¢**

Limit: one per family, please.
Offer expires January 20, 1973.

All Acme and Super Saver Markets will gladly accept your U.S.D.A. Food Stamps

Save 20¢ WITH THIS COUPON (CO) ON YOUR PURCHASE OF A 1-LB. PKG. OF FIRESIDE OR LANCASTER BRAND LEAN
Sliced Bacon

Limit: one per family, please.
Offer expires January 20, 1973.

Save 19¢ WITH THIS COUPON (MFG-6)
Breakfast Orange
DELICIOUS BORDEN'S DRINK
1-lb., 5-oz. jar **65¢**

Limit: one per family, please.
Offer expires January 20, 1973.

Save 50¢ WITH THIS COUPON (MFG-6)
Excedrin P.M. Tablets
FOR FAST HEADACHE RELIEF
btl. of 30 **39¢**

Limit: one per family, please.
Offer expires January 20, 1973.

Save 10¢ WITH THIS COUPON (CO) ON YOUR PURCHASE OF A 3-POUND BAG OF FRESH
Yellow Onions

Limit: one per family, please.
Offer expires January 20, 1973.

Ivory Liquid

1-qt. btl. **61¢** 20¢ OFF!

SUPER SAVING DISCOUNT!
Lux Liquid Detergent
IN THE 10-OZ. BONUS PACK

1-qt. btl. **57¢**

SUPER SAVING DISCOUNT!
Liquid Cold Water All Laundry Detergent

1-qt. btl. **69¢**

TOWN AND COUNTRY TOPICS

DAVE WOODWARD
ASSISTANT KENT COUNTY AGENT

Is it a good time to buy land? Prices are at an all time high and going higher. Should you take the plunge for more land now?

This is a decision, a tough decision, for you to make, and it's like trying to forecast the future. Many farmers who can farm additional acreage without a major machinery outlay could lower their production costs by acquiring more land.

If you can manage to maintain profitable yields on larger acreage, perhaps you should look for more land, but before you enlarge your operation, make sure you are making maximum profits on your present acreage. Perhaps you should look into farming more intensively on your present acreage, and this might enable you to increase your net income to your desired level without adding more land.

Farming intensively means using the latest techniques such as adequate fertilizer, chemicals to control weeds and insects, planting the right variety, using the right populations and timely field work, to obtain top yields. Or possibly, venture off into a new enterprise on your farm, such as raising bedding plants, veal calves, dairy beef, or some other concentrated enterprise.

However, if you want to stick to crops and need more land, how about renting instead of buying? If you already have the labor you need to spend, all you need is control of more land and not owning it. Often you may be ahead to spend capital on production inputs rather than buying land. This is especially true for young farmers and farmers just starting out.

In the short run, it may be just as feasible to rent more land as to own it, but renting gives you no chance to benefit from any rise in land values. If it were not for the appreciation in value per acre, I am sure you would be ahead to rent, but the average rate of return from farming does not give adequate support to current land prices. Mortgage rates of 7 to 8% on a land price of \$900 per acre suggests that the average net return should be \$63 to \$72 per acre. Under typical management, such rates have not yet been achieved with grain on even the best Delaware farmland.

No one can predict a future that's guaranteed. Most people we know feel that land prices will keep climbing upward, but they may not increase every year. Sometimes the best land deal is made by retired farmers, or farmers that are quitting, because they could be eager to sell. The same might be true of estates, when it is a forced sale and you don't have to compete with the heirs.

Building a half-mile fence with only 34 fence posts? You can if your intended fence line is along flat land and there are no curves or corners involved.

The new system is called a "suspension fence" and differs from an ordinary barbed wire line in that the wire is suspended from the posts rather than attached by stapling.

This type of fence saves time and money, considering that the posts are over 100 ft. apart instead of 16 to 20 ft. Eye screws are inserted into the posts, one for each wire, and the wires are run through them. Midway between the posts, vertical wire stays are run through them to maintain proper spacing and help to prevent sagging.

At either end of the fence, turn buckles, one for each wire, are tied to the ends of the wire to tighten them. Because the wires are free at each post, tightening them is no problem because they can run free through the wire screws. The turn buckles are inserted into corner posts that are adequately placed.

This new fencing system is said to require less maintenance and the building costs can run as much as 30% under the cost of conventional fencing.

Delaware Food Market Report

By Anne W. Holberton

Ever since Nicolas Appert in 1809 first worked out the method of canning in France, and Louis Pasteur, another Frenchman, discovered the underlying principle of food preservation, research has continued to improve canned foods.

A major advance in canning was the development of a new procedure known as "Flash

18." It combines high temperature, short time, sterilization and can filling under high pressure. This has made it possible for such products as cooked rice to be canned, yet retain its best qualities. The versatility of this method has made it possible to can all types of liquids and in many forms of packaging. This process is still writing a new page in canning history, and it is definitely making canned foods more competitive with frozen and fresh foods.

Yet when all is said and done, when you buy canned foods, you buy blind. You can't feel a canned tomato, or touch a kernel of canned corn. You just don't see it or feel it until you buy it and get it home. Then its too late to change your mind.

The label is the "window" through which you can see the content in the can. All information on the label must be truthful and not misleading. The fair packaging and labeling law requires that all canned food shipped in interstate commerce be labeled with the following information.

The legal name of the product, such as peas, corn, etc.

The net contents in weight or fluid measure.

The name and address of the

packer or distributor. All ingredients in the container.

For some products the law requires that labels give style or pack (whole, halves, sliced, diced), variety (cling or free stone peach) and the sweetness of the syrup used with fruits (light, heavy, extra heavy). If the number of servings is given, the law requires that the size of the serving must be stated in common measures, ounces or cups, so the buyer will know just how much this serving is.

When buying your canned foods also check the condition of the can. Be sure the cans are not leaking or swelled or bulged at either end. Bulging or swelling indicates spoilage. Small dents in cans do not harm the contents. Badly dented cans, however, should be avoided.

Even with all of this information you may have to buy a can or two and check the quality to see which brand actually meets your standards for the meal you are preparing. Remember also that whole or specially sized vegetables and fruits usually cost more than cut styles. Fancy cut foods are more expensive than other cut styles (French cut beans). Dices, short cuts, and vegetable juices are least ex-

pensive. However, price alone is not the best way of choosing.

Canned foods are cooked foods - so don't boil them, just heat until thoroughly hot. Handle carefully while heating and serving, because if you don't they can become mushy, unattractive products as well as lose their nutritive value. Yes, canned foods do retain high nutritive values.

Once the can is open, it is perfectly safe to leave the unused portion in the refrigerator (covered), just as any other cooked food is kept.

Unopened canned food should be stored in a cool, dry place. High storage temperatures tend in time to impair the color and flavor of many products, though not their wholesomeness.

It Seems To Me

Janet Reed

While you take advantage of white sales, don't forget to take stock of your pillows. Maybe it's time for replacements. A fine pillow may last for 10 to 15 years, but a cheaper one must be replaced more often.

There are pillows to meet almost any preference of firmness.

Down is the softest as well as the most expensive. Down is the soft undercoating of a water fowl and even though down pillows are prized for their softness and buoyancy, they do not wear as well as feather pillows.

Water fowl feathers make a better pillow than feathers from land fowl such as turkey and chicken, since they are more buoyant. Feathers may be mixed with down for long lasting, good quality pillows. A mixture of 80 percent goose feathers and 20 percent down makes an excellent pillow.

Foam rubber pillows may be molded in one piece, or molded in two or more pieces and cemented together, or they may be shredded from larger pieces. Test the firmness of a foam rubber pillow before you buy so you are sure you get the degree of firmness you prefer.

Polyester fiberfill is a resilient filling that makes a soft, fluffy, buoyant pillow, good for people allergic to feathers.

Don't judge a pillow by its cover. A handsome cover doesn't necessarily mean a good pillow. The quality of the pillow, regardless of the filling, will determine your

satisfaction. Use these simple tests to help you make a decision.

Is the pillow light in weight for its size?

Is it properly filled? Balance it on your arm; a well filled pillow holds its shape, but an improperly filled pillow will droop.

Is it buoyant? Will it support your head without allowing it to sink too deeply? Is the pillow so firm that it "fights back?"

Does it rebound quickly? When pressure is released, a pillow should spring back into shape.

Is the pillow smooth, free from lumps and stiff feathers? Is it dust free? Give it a whack to see if dust comes out.

Is it free from odor? Odors don't improve with age.

With wide variety of pillows available, you should be able to select one to please each member of the family.

Asbury United Methodist Church News

10 a.m. - Church school. Classes for all ages. You are invited to attend.

11 a.m. - Morning worship. Sermon by the Rev. John Edward Jones, "Be Careful What Call the Will of God". Anthems by the Crusader and Cathedral Choirs.

6 p.m. - Junior and Senior High U.M.Y.F.

7 p.m. - Evening worship. Study of the Epistle of James. Anthem by the Chancel Choir. The Rev. Harry Bradford, Director, Songs by the Junior High United Methodist Youth. Altar flowers this week will be presented for the glory of God by Mr. and Mrs. Kenneth Jones in memory of Dr. and Mrs. W. T. Chipman.

Friendly greeters this week will be Mr. and Mrs. Charles Greenhaugh.

Family Night Service, Jan. 28, at 7 p.m., with Mrs. Thomas Knowles, of Sharpstown, Md., at the organ. The Martha Circle, Mrs. Charles Rapp and Mrs. Herbert Cain, leaders, will serve refreshments.

The Annual Venison Dinner will be Wed., Jan. 31, at 6:30 p.m.

Wed. at 3 p.m. - Cherub Choir.

6:30 p.m. - Girl Scouts. Thursday 6 p.m. - Brownies. 6 p.m. - Chancel choir. 6:30 p.m. - Crusader choir. 7:30 p.m. - Cathedral choir.

Business Directory

For Your Convenience to Find Products and Dependable Service from these Reliable Merchants

AUTO

COMPLETE CLEAN-UP SERVICE
We Use SIMONIZE PASTE WAX

S & S SIMONIZE SERVICE
(Across From Rodney Village)

1861 S. DuPont Highway Dover 674-9522

Chike's AUTO UPHOLSTERY & SALES

- FACTORY VINYL TOPS
- FACTORY WINDSHIELDS & DOOR GLASS INSTALLED
- CONVERTIBLE TOPS
- COMPLETE AUTO UPHOLSTERY

PHONE 674-4896 1316 S. DuPont Hwy, Dover
Complete Financing - No Money Down With Approved Credit

BANKING and BUILDING

FULL BANKING SERVICE

- Saving Accounts
- Checking Accounts
- Travelers Cheques
- Bank by Mail
- Safe Deposit Boxes
- Personal Loans

FIRST NATIONAL BANK
of Harrington
Commerce St. Member of F.D.I.C. - 398-3232

Complete BANKING FACILITIES
at the FRIENDLY BANK

PEOPLE'S BANK
Commerce St. Harrington
398-3256

FOR ADVERTISING SPACE
IN THE DIRECTORY
CALL 398-3206

R & O Kitchen Cabinet Co., Inc.
KITCHEN DESIGNERS

BILL OXLEY 1199 N. DuPont Hwy.
Kitchen Specialist DOVER 734-5267

DOWNING CO.
Est. 1912

HEATING & AIR CONDITIONING
ENGINEERING • INSTALLATION • SERVICE
Call 422-4565 Milford

TO ADVERTISE YOUR MERCHANDISE IN THIS DIRECTORY
PHONE 398-3206

D & R TRAILER SALES, Inc.
Nelson Rash, Owner
Best in Quality NEW & USED TRAILERS Bought and Sold
U.S. 13 Harrington Phone 398-3418

CLOTHING

Teggett

Your Happy Shopping Store

1 N.E. Front St. Milford, Del.
Phone 422-9641

WOLLASTON'S CASUAL CLOTHES

SEAFOORD 692-7268 HARRINGTON 398-3764

EQUIPMENT

TAYLOR & MESSICK, INC.

JOHN DEERE FARM EQUIPMENT
LAWN and GARDEN EQUIPMENT
SALES AND SERVICE BY TWO-WAY RADIO
Phone 398-3729 Harrington, Del.

FOOD and INSURANCE

Hi-Grade Dairy
All Dairy Products At Our Store or at Your Door

Homemade Ice Cream
Pizzas
Submarines and other Sandwiches
Phone 398-8321
97 Clark St. Harrington

OUTTEN'S Insurance Service
Commerce St. Harrington 398-3276

NATIONWIDE CONSUMER SERVICES, INC.
"Complete Customer Financing"

Associated with
NATIONWIDE MUTUAL INSURANCE COMPANY
The man from Nationwide is on your side
Home Office: Columbus, Ohio

Harrington Newsstand & Restaurant

MAGAZINES - DAILY & WEEKLY NEWSPAPERS
GOOD FOOD OPEN SEVEN DAYS
Delaware Ave. Phone 398-8970

DIAL 398-3080 FOOD TO TAKE OUT

PIZZADILI'S

SUBS - STEAKS - PIZZA
Spaghetti, Lasagne and Chicken and Other Dinners
Unique Gifts For Your Browsing Pleasure

MOORE'S DAIRY STORE

PENSUPREME Friday - Spaghetti
Platters Everyday Subs Pizzas Ice Cream
Carry Out Orders 398-8742 Harrington
Mon. Thru. Sat. 9:30 a.m. - 10 p.m. Sunday 2 - 10 p.m.

PEOPLES RESTAURANT, INC.
WHERE THE FOOD IS
"Home Cooked"
AND YOUR PATRONAGE APPRECIATED
Phone 398-3917 OPEN 7 DAYS

FLOWERS and GIFTS

Vaughn's FLOWERS

Milford - Harrington Road
Funeral Designs - Bridal Bouquets - Corsages
FREE DELIVERY SERVICE TO HARRINGTON DAILY
Milford, Del. 422-9445

FUNERAL SERVICES

Sympathetic Service in Your Hour of Need

J. Millard Cooper Funeral Home
ESTABLISHED 19 YEARS
110 E. CENTER STREET
Harrington, Del. 19952 Phone (302) 398-8317

FURNITURE

Salmon's Furniture Store
PHILCO APPLIANCES

3 Miles South on Rt. 13
HARRINGTON, DELAWARE Phone 398-8857

SERVICE

INDUSTRIAL - COMMERCIAL - RESIDENTIAL
DUMPSTER - DUMPSTER
TECORP COMPACTOR - WIDE-MOUTH PACKER
1 TO 50 YARD CONTAINER SERVICE
SALES & SERVICE

All-Rite Rubbish Removal, Inc.

Felton, Delaware
PHONE 284-9322

SERVICING

- TELEVISION (B & W and Color)
- STEREO ● CAR RADIO ● TAPE PLAYER

- FACTORY TRAINED IN -
RCA - Zenith - Motorola - Magnavox

L. & D. ELECTRONICS

14 CLARK ST.
HARRINGTON, DEL 398-8297
LEROY CALHOUN, Owner

PRINTING

Distinctive PRINTING

The Harrington Journal
CALL
398-3206

Advertise Your Products IN THIS DIRECTORY FOR BEST RESULTS

THE YARDSTICK
and SEW It Goes
by Ruth Jaquette

Sew and Save in '73
And you will have a better Mother be.
Buy materials that are wash and wear.
And you'll have more time to "do" your hair.
Come to us for your sewing buys;
Needle and thread, or hooks and eyes.
We have them all and aim to please.
Whether it's 90 or 15 degrees.
Start your year with a good beginning.
And you will finish with a happy ending.

Buttonhole Twist at 25c a spool.
Have you seen our quilted material? At \$1.80 a yard, you can't go wrong. A long quilted skirt feels good these cold days.
Our double knits are now \$3.50 a yard. 58" - 60" wide, too. We want to make room for spring colors, so get them while they last at this price.
Plaids and stripes in cotton blends are now \$1.00 yard.

Happy Sewing
#1 N. Walnut St. MILFORD 422-4140

HOMEOWNERS CORNER
by HARRY JACK

Acoustical tiles are often the only answer for use in very noisy areas such as the basement. These are not considered sound-proofing, but they are sound-absorbing. Acoustical tile will keep noise in the basement from being transmitted to other parts of the house. Even more importantly, it will absorb sound so that it is not reflected inside a noisy room increasing the sound. Insulating material between joists before putting on a ceiling is the most effective way to keep sound from disturbing others.

Answers to repair, remodeling or building problems plus the materials can be had from the knowledgeable staff at HARRINGTON LUMBER & SUPPLY, Harrington, 398-3241. Quality supplies including Anderson, Stanley, Skil, and Armstrong are carried and because we don't need elaborate buildings or showrooms our prices are extremely competitive. Hours: Mon. thru Fri. 7:30 a.m. - 5 p.m., Sat. 7:30 a.m. - Noon.

HELPFUL HINT:
Nail acoustical material to furring strips across ceiling joists for added sound protection.

Dairy Farmers Should Evaluate High-Cost Feeding Programs

Within the last few weeks, prices have risen on several of the nation's top commodities including wheat, corn and soybeans. As a result, prices have also risen on animal feed and in time can be expected to increase the price of meat, poultry and eggs.

The increased price of soybean oil-meat will particularly affect the dairy industry, according to Dr. W. R. Hesselstine, extension dairy specialist at the University of Delaware. Prices have risen on all natural sources of protein and many dairymen are being forced to consider using urea as a protein supplement.

There are a number of systems dairymen can use to lower their use of vegetable protein sources and consequently lower costs, Hesselstine says. If a cow will eat about three pounds of a molasses-urea liquid supplement per day using a liquid protein tank and wheel system, dairymen can use a 16 percent protein ration rather than a 20 percent protein ration. Or, farmers using a home-grown mix can use 200 pounds less soybean oil per ton of feed.

Dairy farmers feeding alfalfa hay or good quality clover mixed hay can use a tank and wheel system with home-mixed feeds. An 11-12 percent protein ration rather than a 16 percent ration.

Farmers who have soybeans at \$4.50 a bushel or \$7 a cwt can use them as an excellent source of protein energy. Each 100 pounds of ground beans with 34 percent protein and 88 percent TDN will add about one and three quarters percentage points of protein to a ton of feed.

Dairymen feeding large quantities of silage with a 20

percent ration can use a liquid protein wheel and drop back to a 16 percent ration. Cows will eat a little less silage on this program.

There are several things which dairymen using protein supplements should remember, Hesselstine says. Be sure to buy wheel liquid feeds only from reputable dealers. Liquid feeds from good companies contain about 33 percent protein and 32 percent of the 33 percent protein coming from urea. They also contain about 55 percent TDN and contain added minerals and vitamins.

Cows will eat about three pounds of the supplement per day. This is the equivalent of about one pound of protein, or the protein maintenance requirement of a Holstein cow for one day.

In addition to one pound of protein for maintenance, a cow milking 70 pounds will need .04 pound of protein per pound of milk, or 2.8 pounds of protein. A 16 percent protein ration at 25 pounds would give her just four pounds of protein, which equals the maintenance level plus the additional amount for the milking cow. The 16 percent protein is not all digestible, but even corn silage would make up this amount of protein, Hesselstine says.

When cows first eat from a wheel, they may tend to overeat. Until they get used to it, it is a good idea to let them use it for only a few hours at a time. Cover the wheel or put wedges into it so it can't turn. This will let the cows adjust to the urea gradually.

When using a wheel plus urea in a concentrate, be very alert to drops in production, he adds. With too much urea,

Nazarene Church News

Sun., Jan. 21 - 9:45 a.m. - Sunday school. Classes in Bible study for all ages. Frank Slater, supt.
10:50 a.m. - Morning worship service. Solo, followed by the pastor's message, "The Great 'I Am'".
6:15 p.m. - The teens and young adults will gather in the auditorium for an interesting program. This week, Mrs. Maxine Reitano, will be in charge of the program.
7 p.m. - Evening evangelistic service. Don't miss the special service planned for this hour. There will be a chorus time; a special song; followed by the Pastor's message "The Use of Gods Name".

Tues., Jan. 23, 7 p.m. - Family recreation night at the armory.
Wed., Jan. 24, 7:30 p.m. - Weekly prayer and praise service.
Thurs., Jan. 25, 7 p.m. - Visitation. We will be going out into the community. Come and join us in spreading the Gospel.
Sun., Jan. 14 - 2:30 p.m. - A Community Sing. Everyone is welcome to come and join this fellowship. We will have special musical numbers, chorus melodies and a great time in the Lord. Won't you join us.
Jan. 31 thru Feb. 4 - Youth Week. Every night there is something different planned for the young people. On Sat. night Feb. 3 at 7:30 p.m., the Singing Rhodes Family, will

Farmers are expected to plant larger crops in 1973, and larger yields should bring prices down somewhat, McAllister says.

Church News

Trinity United Methodist Church, Frederica, 9:45 a.m. - Sunday school; 11 a.m. - Worship service.
Sardis United Methodist Church - 9 a.m. - Worship service; 9:45 a.m. - Sunday school.
Saxton United Methodist Church, Bowers Beach, 10 a.m. - Worship service.
Rev. R. Gordon Given, pastor.

present a sacred concert. On Sun. Feb. 4 at 9:45 a.m. and 7 p.m. The Rhodes Family will be singing again. Special speaker for these services will be James Pettit.

St. Stephen's Episcopal Church News

Wed., Jan. 17 - Evening prayer and Healing Service at 7:30 p.m.
Sun., Jan. 21 - Holy Communion and Sermon at 9 a.m. Church school at 10:15 a.m. AA Meeting at 8 p.m.

West Harrington Charge United Methodist Church

Prospect - Russell Leagles, supt.
8:45 a.m. - Church school.
9:45 a.m. - Worship service.
7:30 p.m. - Choir rehearsal.
Thursday.
Salem - Edward Collins, supt.
8:45 a.m. - Worship service.
9:45 a.m. - Church school.
Trinity - Leroy Calhoun, supt.
10 a.m. - Church school.
11 a.m. - Worship service.
6:45 p.m. - Wed. Junior Choir rehearsal and 7:30 p.m. Youth Choir rehearsal.
7:30 p.m. Thursday, Senior Choir rehearsal.
6:30 p.m. - Saturday, The Youth will meet.
Bethel - Lester Larimore, supt.
9:45 a.m. - Church school.

Burrsville Church of God News

Sunday school - 10 a.m.
Morning worship - 11 a.m.
Sunday evening - 7:30 p.m.
Old Fashion Prayer Meeting - Tuesday - 7:30 p.m.
Family Training Hour (Bible study for the whole family) - Thursday - 7:30 p.m.

Church of God of Prophecy

The Church of God of Prophecy invites you to attend church on 110 Fleming Street. Sunday school - 10 a.m. Evangelistic Service, Sun., 7:30 p.m. Rev. Frank Daniels Jr., pastor.

MacNutt Electric Co. Awarded Contract at U. of D.

The MacNutt Electric Co. of Delmarva in Dover has been awarded a \$27,000 contract to complete additions to the University of Delaware central fire alarm system. Eight university buildings will be added to the system, making it campuswide.

First Baptist Church of Frederica

The Rev. Richard Hopple. Sunday School - 10 a.m. Worship service - 11 a.m. Sunday evening worship at 7 p.m. Wednesday - prayer and Bible study - 7 p.m.

THE SEWING SHOPPE
A Complete and Professional Men's and Women's Alteration Service
7 SOUTH WALNUT MILFORD

TURBO BRUSH CAR WASH
North East Front St. In Milford Across From Shopping Center Soaps / Scrubs / Rinses / Waxes Any Car In Two Minutes For \$1.00 Sun. Mon. Tues. Wed. 9 a.m. - 6 p.m. Thurs. Fri. Sat. 8 a.m. to 8 p.m.

FARMERS SPECIAL
ALL SIZE USED TIRES For Trucks and Implements
SPECIAL PRICES FOR FARMERS \$12.50 and up
CHEROKEE TRUCK STOP
Sandtown, Delaware Route 10 284-9939

RAINBOW INN
AT LITTLE HEAVEN
Seafood Specialties Steamed CRABS • SHRIMP • CLAMS
COCKTAILS DRAUGHT BEER EAT IN OR TAKE OUT
Little Heaven on U.S. 113 Phone 332-9844 Air Conditioned

FIND IT ALL AT ONE STOP
NEWSPAPERS — MAGAZINES PAPER BACKS GOOD FOOD AT HARRINGTON NEWSSTAND and RESTAURANT
Check Our Daily Specials
STORE HOURS — Sunday 6 A.M.-1 P.M. Monday thru Saturday 6 A.M.-7 P.M. Phone 398-8970

CRABS-A-PLENTY
CALL 697-6486 WE CAN HELP YOU PLAN A Private Party, Banquet or A Wedding Party
JUMBO STEAMED SHRIMP - CLAMS Oyster Stew - New England Clam Chowder CRABS ALL WINTER Complete DINNERS and SANDWICHES DELICIOUS HOT PIZZA CHILDREN WELCOME 11:30 A.M. - Midnight
CRABS - A - PLENTY WOODSIDE CROSS ROADS U.S. 13 WOODSIDE, DEL.

24-HOUR SERVICE
FRY'S AMERICAN
398-3700 Harrington, Del. Northbound Lane U.S. 13

NEEDED AT ONCE! GOOD USED FURNITURE AND APPLIANCES
FOR PROMPT, COURTEOUS SERVICE
Call 422-4584 9 A.M. - 5:30 P.M.
WILKIE FURNITURE CO.
200 NORTH ST. MILFORD
FRI. 9-9 SAT. 9-4

Oil heat is very safe, clean, warm, economical, modern and dependable.
Need we say more?
ARCO Heating Oil from Atlantic Richfield
DOWNING FUEL SERVICE, INC.
Hanley & Mispillion St. Harrington
TEL.: 398-3241

COME TO OUR COOKING CLASSES FOR IDEAS
TUESDAY EVENINGS IN JANUARY 7:30 - 9 P.M.
IN THE NEW ALL-ELECTRIC KITCHEN DELMARVA POWER — HARRINGTON
While The Year Is Yet Young 'Tis Time To Perk Up Your Meals.
JANUARY 23 APPETIZERS AND DESSERTS
JANUARY 30 FOREIGN FOODS (France, England, Near East, Far East)
SOUVENIRS FOR EVERYONE DOOR PRIZES
ALL ARE WELCOME NO ADMISSION CHARGE.
WE LOOK FORWARD TO SEEING YOU. COME AND BRING A FRIEND.
Delmarva Power

Of Local Interest

By Mrs. Edythe Hearn

Mr. and Mrs. Elmer Brown visited around quite a few local people last week. Wed. afternoon they visited Mrs. Ida Yoder and son, with Mr. and Mrs. Fletcher Price. Then Thursday evening along with Mr. and Mrs. Robert Wix they visited Mr. and Mrs. Carroll Wix.

Mr. and Mrs. J. F. Camper entertained at cards Saturday evening.

Lake Forest Students, who made "All-County Band" in try outs held at Dover High School were: Glenn Jarrell, Don Pommell, Kevin Peck, Angela Minner, Debbie McKnatt, Walter Bishop, Charlene Detwiler, Wayne Erbe, Russell Dill and Matt Burgess.

Mrs. Blanche McKnatt visited Mr. and Mrs. Elmer Brown Sunday afternoon.

Mr. and Mrs. Clarence Rash visited in Lewes, Monday.

Mrs. Elizabeth Anthony visited Mr. and Mrs. Clarence Anthony Thursday.

Mr. and Mrs. William Parker, of Burrsville, are now at home after spending several weeks in Florida.

Mr. and Mrs. Johnson Tribbitt, of Greensboro, were luncheon guests, Friday, at the home of Mrs. William W. Sharp.

Mr. and Mrs. William A. Taylor returned Monday after spending the weekend with relatives in Richmond, Va.

Mr. and Mrs. Melvin Brown and son, of Dover, visited their parents, Mr. and Mrs. Elmer Brown, Friday evening.

Carroll Welch Jr. celebrated his birthday Saturday with his guests being, his parents, Mr. and Mrs. Carroll Welch Sr., Mrs. Carolyn Poore and children, Raymond and Bobbie, John Clark, Miss Susan Welch, Mr. and Mrs. David Welch and son, David, Mr. and Mrs. Edgar Welch, and daughters, Diann, Roxann and Joyce, and Mr. and Mrs. Louis Welch.

Mr. and Mrs. Calvin Jones and daughters, of Denton, were guests of Mr. and Mrs. Clarence Rash Sunday evening.

Michele Demmitt, of Milford, spent the weekend with her grandparents, Mr. and Mrs. Howard Anthony.

Mrs. Helen Rash visited her brothers, Mr. and Mrs. Clarence Melvin, Mr. and Mrs. Norwood Melvin, and Mr. and Mrs. Lawrence Talbart, in Hickman, last Saturday.

Mrs. Grace Andrews, of Milford, and Clarence Morris spent Sunday afternoon in Georgetown visiting Mrs. Nora Rust and Mr. and Mrs. Charles Dearman.

Mrs. Mary Dolby entertained the faculty card club Jan. 9.

Mr. and Mrs. Jack Carpenter attended the communion breakfast at Calvary United Methodist Church, in Milford, Sunday and showed slides of their recent trip to the Holy Land.

Alfred Boone is now at home after spending three weeks in Washington, D.C., with Charlie Hawkins.

Sunday diner guests of Mr. and Mrs. Carroll Welch Sr. were Mr. and Mrs. David Welch and son, David. Later in the day, Mr. and Mrs. Leslie Dulin were also present.

Mrs. J. E. West, of Georgetown, spent the weekend with her sister, Mrs. L. H. Rogers, who has been confined to her home due to illness for a week.

Mr. and Mrs. Harold McDonald spent the weekend with relatives in Phillipsburg, N.J., Mrs. James Kelley returned home with the McDonalds.

Mr. and Mrs. Richard Jester, of Cape May, N.J., visited their grandmother, Mrs. William Jester, Sunday.

Mr. and Mrs. Donald Garey and children, Chrisy and Leroy, visited Mr. and Mrs. Jerry Garey, in Greensboro, Md., Friday evening.

Andrewville

By Mrs. Florence Walls

Sunday school at Bethel Church on Sunday morning at 9:45 a.m. Lester Larimore, supt.

Mrs. Tilghman Outten is a patient in Wilmington Gen-

eral Hospital. We hope she will soon be home.

Mrs. Hubert Cannon, Mrs. George Wright, Mrs. Herbert Lane recently visited Mrs. Mary Paskey.

Mr. and Mrs. George Wright and Mrs. Florence Walls visited Mr. and Mrs. Hubert Cannon on Friday evening.

Mrs. Emma Ryan and Mrs. Lydia Thorpe visited Miss Della Ryan in Delaware Hospital, near Wilmington, last week.

Mr. and Mrs. James Morgan visited Mr. and Mrs. Robert Nelson, of Milford, on Friday.

Mrs. Franklin Butler visited her daughter and son-in-law, Mr. and Mrs. Donald Jester, and family, on Saturday.

Robin and Kim Cannon and Dana Hicks recently visited Mr. and Mrs. Hubert Cannon.

Mrs. Mary Paskey, Mrs. Kenneth Prettyman, Mr. Tilghman Outten and Mrs. Franklin Spence recently visited Mrs. Tilghman Outten at the Wilmington General Hospital.

Mr. and Mrs. Hubert Cannon and Mr. and Mrs. Herbert Lane were dinner guests of Mr. and Mrs. Danny Hicks and daughter, on Sunday.

Arthur Willey visited Mr. and Mrs. Alton Breeding on Sunday afternoon.

Mrs. Emma Bradley and Mrs. Florence Walls visited friends in Lewes last Thursday.

Eugene Moore

C. Eugene Moore, 59, of Camden, was dead on arrival Wed. Jan. 10, at Kent General Hospital, Dover, after an apparent heart attack at Carl King, Inc., where he was employed. He is survived by his wife, Mrs. Beatrice H. Moore; two sons, Eugene T. of Dover and Benjamin F. of Woodside; a brother, Herman of Canterbury; and three sisters, Mrs. Elaine Holtzner of Catonsville, Md., Mrs. Madeline Wright of Magnolia and Mrs. Marie Valiant of Oxford, Md.; and four grandchildren. Services were held Saturday afternoon at the Berry Funeral Home, Felton. Interment was in Odd Fellows Cemetery, Camden.

Canterbury-Viola

By Edna Massimilla

A Preparatory Membership Class meets at the parsonage on Saturday mornings at 10 a.m. Any persons desiring to join with this group please contact Rev. Massimilla.

In Camden, at Pilgrim Baptist Church, there was a 'Robe Rally' Sunday afternoon for the benefit of the Junior Choir. Guest speaker was Rev. Kenneth Harrigan from Wilmington.

Hickman

By Mrs. Isaac Noble

The Order of Worship Sunday Morning at Union United Methodist Church - 9:45 a.m. Guest speakers will be John Dill, Gideons Childrens Sermon "Potato Chips".

Service week for all the North Carolina County will observe the Week of Prayer for Christian Unity at the Catholic Church in Marydel. Sunday evening, Jan. 21, 7:30 p.m. The Youth are invited to anticipate.

Mrs. Bernice Haymon, of Harrington, spent the weekend with Mrs. James O'Day. Sunday they were dinner guests of Mr. and Mrs. Ollie Henry, of near Federalsburg.

Mrs. Thomas Morgan and Tommy, and Mr. and Mrs. Charles Morgan, of Claymont, were Sunday dinner guests of Mr. and Mrs. Clarence Porter and family.

Mr. and Mrs. Dawson Fearins, of Denton, were last Thursday dinner guests of his mother, Mrs. Jesse Fearins.

Mrs. Harry Towers and Mrs. Arthur Dolby, of Bethlehem, were a week ago Sunday dinner guests of Mr. and Mrs. Clarence Breeding, of Liden School Rd.

Mrs. Jesse Fearins was a Sunday dinner guests of her daughter and family, Mr. and Mrs. Richard Wilson, of Williston.

The Hymn Sing at Union Church Sunday evening was well attended and we had a wonderful service. Guests were from Milford.

Mr. and Mrs. James T. Wyatt, of Felton, have announced the engagement of their daughter, Barbara Ann, to Howard Price, son of Mr. and Mrs. Edward Price, also of Felton. The bride-to-be is a 1971 graduate of Lake Forest High School and is employed by Super Saver, in Dover. Her fiance is a 1969 graduate of Felton High School and attends Delaware State College. He is employed by Metalcraft Products, Smyrna. No wedding date has been set.

The January meeting of the Briar Park Civic Association was held on January 10th at Nellie Stokes School Cafeteria.

The Ladies Auxiliary of the Camden-Wyoming Fire Company met for its January meeting on Tuesday at the fire house.

Birthday congratulations to Miss Donna Herrmann, who will be fifteen on Jan. 18.

SM Sgt. and Mrs. Frank C. Dobry, of Magnolia, have announced the engagement of their daughter, Michelle Jeanne, to Daniel C. Sheasby, son of Mr. and Mrs. Daniel Sheasby, of Danville, Ohio.

The bride-to-be is a Caesar Rodney graduate and is employed by Spiegel Catalog Office in Dover. Her fiance is a 1968 graduate of Danville High School and he serves with the U. S. Air Force at Dover Air Force Base. A June wedding is planned.

Mrs. Anna Belkove was the guest speaker at the Rising Sun Community Club meeting on Jan. 15, and the subject was Practical Nursing.

At Faith Community Church, Camden, the sermon title on Sunday was 'Give This Man Place'. The service This Man Place'. There was a hymn sing in the evening.

There will be a roller skating party on Jan. 22, sponsored by the Church school, of Felton United Methodist Church. Children 50c and adults 75c. The group will leave the church at 6:30 p.m. and return about 9:30. For further information please contact Mrs. Millie Warrington.

The Junior Choir, of Felton, will have a swim-party on Saturday at Wesley College pool.

Harrington Baptist Church

9:45 a.m. - Sunday school. We have classes for every age. Ray Quillen, director.

11 a.m. - Morning worship. Billy Curtis, interum pastor. Come and hear God's word proclaimed.

7 p.m. - Evening worship. Billy Curtis, will bring the message.

A nursery is provided at the Morning Worship Service for pre-schoolers.

Each Wednesday at 7 p.m. the church will have the gym at the W. T. Chipman School for recreation. Basketball, volleyball and other sports will be offered.

Wed. Troop 79 of the Boy Scouts will meet at 6:30 p.m. at the church.

Thurs. GA and Acteens - 6:15 p.m.

7 p.m. - Prayer.

7:30 p.m. - Bible Study.

8 p.m. - Choir practice.

Mrs. Annie Handsbery

Mrs. Annie S. Handsbery, 92, of Felton, died Saturday at Courtland Manor Nursing Home, Dover, after a long illness. Her husband, Frank Handsbery, died in 1954. She is survived by three daughters, Mrs. Charles Lindale,

with whom she had lived, Mrs. William Maclary, of Leipsic, and Mrs. Harry Graver, of Maple Shade, N. J.; 13 grandchildren, 42 great-grandchildren, and two great-great-grandchildren. Services were held Tuesday afternoon at the Ferguson and Hayes Funeral Home, Dover. Interment was in Roby Methodist Cemetery, Leipsic.

Mrs. Minnie Grove

Mrs. Minnie B. Grove, 88, of near Milford, died last Thursday in the Country Rest Home, Greenwood, after a long illness.

Her husband, Charles E. Grove, died in 1967. She is survived by two sons, Norman of Milford and Gale of Felton, four daughters, Mrs. Roland Thompson, of Yantic Conn., Mrs. Charles S. Postles, of Milford, Mrs. Daniel F. Kellermann, of Swarthmore, Pa., and Mrs. Harry B. O'Rear of Augusta, Ga.; 20 grandchildren and 28 great-grandchildren.

Services were held Sunday at the Rogers Funeral Home, Milford. Interment was in Odd Fellows Cemetery, Milford.

Floyd Allen

Floyd Allen, 69, of near Greenwood, died Mon., Jan. 8, at Milford Memorial Hospital following a short illness. Mr. Allen retired from Southern States Co-operative, Inc., Milford, in 1959. He is survived by his wife, Mrs. Edith E. Allen; two sons, Floyd James and Howard K., both of Greenwood; four daughters, Mrs. Ruth Ann Armstrong and Mrs. Charlotte L. Millman, both of Greenwood, Mrs. B. Janet Wilcutts, Milford, and Mrs. Margaret E. Hurd, Viola; four brothers, Paul of Roper, N. C., William and Roland of Wyo-

oming, and Thomas of Henderson, Md.; one sister, Mrs. May Edwards of Felton; 21 grandchildren, and five great-grandchildren. Services were held Fri., Jan. 11, at Berry Funeral Home, Milford. Interment was in Lincoln Cemetery, Lincoln.

Samuel E. Jones Sr.

Samuel E. Jones Sr., 62, of Lincoln, died Friday in Kent General Hospital, after a short illness. He worked for Delmarva Nursery, Lincoln.

His wife, Mrs. Hazel Jones, died in 1970. He is survived by three sons, Samuel E. Jr., of Milford, Joseph A. and Lawrence A., both at home; two daughters, Mrs. Hazel E. Silva, of Honolulu, Hawaii, and Miss Joyce Ann Jones, at home; two brothers, Charles J. of Townsend and Franklin of Milford; five sisters, Mrs. Mabel E. Watkins of Houston, Mrs. Amy E. Burris of Townsend, Mrs. Lena Williamson, Mrs. Eliza Stokes and Mrs. Susan Holston, all of Milford; eight grandchildren and one great-grandchild.

Services were held Tuesday afternoon at the Berry Funeral Home, Milford. Interment was in Odd Fellows Cemetery, Milford.

Cub Scout News

The Cubs of Pack 76 are reminded that next Thursday, Jan. 25, will be skit night at their regular pack meeting. As usual, the meeting will be held at St. Bernadette's Church Hall at 7 p.m. In addition to the skits, which are put on by the dens, and the presentation of awards, there will be information and planning for events to come in February, Scout's anniversary month. All Cubs and their parents should be present.

AL MANN WISHES To Thank The HONEST, INTERESTED Citizens of Harrington who supported him in the race for Mayor, on Tuesday, January 9, 1973

CONTRACT FOR SWEET CORN New - Higher Price Harvested with New Modern 4-Row Harvesters Cash Crop - Payment ON FINAL DELIVERY FROM YOUR ACREAGE CALL CANNERS IN BUSINESS SINCE 1933 D. Thompson Swing, Inc. PRICE, MD. 301-556-6633

ANNUAL Magnavox SALE SAVE up to \$100 on Magnavox Stereo Theatres Stereo Consoles and Component Systems. Also enjoy great savings on radios, tape recorders, portable phonographs and monochrome TV. Deluxe Astro-Sonic Stereo FM/AM Radio-Phonograph SAVE \$100.00 NOW \$399.00 Magnificent sound... magnificent styling. Unmistakably Magnavox! There's even a built-in 4-Channel Sound Decoder (just add two speakers, flip a switch... and you'll be surrounded by music!). It also has: 50-Watts IHF music power, air-suspension speaker system with four speakers, Micromatic I Player, plus record storage and area for optional tape units. Your choice of four fine furniture styles.

FISHER APPLIANCES, INC. 107 N.E. Front St. MILFORD 422-8044 FREE PARKING

MASTEN one stop shopping Lumber building products home center a world of ideas, values and courteous service SAVE NOW! SENCO Paint, Varnish Remover Has Arrived 20% off While they last! All Electric Heaters, Pkg. of 6 Logs Fire-Glo, Wagons, All Fireplace Items, GOOD SELECTION, Paneling 4mm LUAN WOOD Substrate, Your Choice Ash or Chestnut pattern, 4x8' sheet \$2.99, Rockwell Model 75 7 1/2" SAW \$29.99 MASTEN home center STORE HOURS 7:30 A.M. to 5:30 P.M. MONDAY THROUGH FRIDAY 7:30 A.M. to 4 P.M. SATURDAY Milford, Delaware Millsboro, Delaware Clayton, Delaware

Our Prices will Please You! at

QUILLEN'S DAIRY MARKET
Open EVERY DAY of the Year
8:00 A.M. - 10:00 P.M. - For Your Convenience
Dorman St. PHONE 398-8768 Harrington, Del.

ROUND STEAK



BONELESS - WELL TRIMMED
FULL CUT \$1.39 lb.

CHIPPED STEAK \$1.69 lb.
WAFER THIN - WELL TRIMMED

EXTRA LEAN Round Steak Ground \$1.29 lb.

TURKEY NECKS 35¢ lb.

TURKEY DRUMSTICKS 39¢ lb.

OCEAN JOY Salt Mackerel Fillets 12-oz. pkg. 69¢

STOCK UP NOW ON FROZEN FOOD

FROSTY ACRES Stewing Vegetables 20-oz. bag 39¢

BIRDS EYE COOL WHIP 9-oz. pkg. 53¢

MORTON'S Chicken - Beef - Turkey POT PIES 2 8-oz. pkgs. 39¢

CUBED STEAK No Gristle - No Fat \$1.69 lb.

QUILLEN'S HOMEMADE PORK SAUSAGE Loose 89¢ lb. Stuffed 99¢ lb.

CARSON'S SLICED DRIED BEEF Wafer Thin Air Dried 4-oz. pkg. 69¢

CHECK OUR BARGAINS THROUGHOUT THE STORE
Produce - Meats
Frozen Vegetables - Groceries
Dairy Products - Bread
Cakes - Etc.



GASOLINE SERVE YOURSELF AND SAVE \$\$\$

SHOP AROUND! YOU'LL BECOME OUR STEADY CUSTOMER!

shop THESE SPECIALS IT HELPS THE BUDGET!

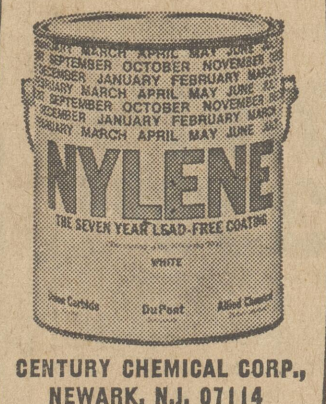
MARYLAND CHIEF Kale or Turnip Greens 2 15-oz. cans 29¢

KRAFT Marshmallow Cream 7-oz. jar 27¢

DOLE Sliced Crushed or Chunks PINEAPPLE 20-oz. can 39¢

MUSSELMAN'S APPLE SAUCE 2 16 1/2-oz. cans 39¢

NYLENE IS HERE. Apply one coat on most surfaces, relax for seven years. Get ready to paint the inside or outside of your house, barn, swimming pool area, wood, metal, masonry or concrete. Get amazing NYLENE - The seven year lead-free coating. It's the coating of the '80's in the '70's. It's 100% lead-free. Safe for nurseries, playrooms, brooder houses and dairies. And it's guaranteed to last for 7 years. Stop by the authorized dealer below and pick up a free sample of NYLENE. Or get 50¢ off your first quart, one-dollar off your first gallon.



EXCLUSIVE AUTHORIZED DEALER

DUZ DETERGENT With Tumbler 10¢ OFF 43-oz. box 79¢

CUT-RITE WAX PAPER 125 ft. roll 27¢

KRAFT GRAPE JELLY 18-oz. jar 39¢

HANOVER KIDNEY BEANS 2 17-oz. cans 43¢

NESTLE'S QUIK Chocolate Flavoring 16-oz. pkg. 49¢

HUNTS TOMATO PASTE 2 6-oz. cans 29¢

KRAFT PURE ORANGE JUICE 32-oz. jar 39¢

PARKAY Oleomargarine Quarters 16-oz. pkg. 39¢

TASTY EATING PRODUCE

Red Rome APPLES 3 lb. bag 49¢

CALIFORNIA CRISP and TENDER CARROTS 1 lb. bag 19¢

Winning combination QUALITY FOOD LOW PRICES

PRICES EFFECTIVE JAN. 18-19-20 We Reserve the Right to Limit Quantity

Quality Guaranteed -- at Low Prices OPEN 8 A.M. to 10 P.M. - Every Day