

# THE HARRINGTON JOURNAL

SIXTIETH YEAR

PUBLISHED WEEKLY

HARRINGTON, DELAWARE

FIFTEEN CENTS PER COPY

NO. 20

## Discusses Plans For Heritage Week In Harrington Endorses 24 Hour Police Protection

The Harrington Chamber of Commerce gave its stamp of approval for the November 12th referendum in the school district when it voted to endorse the referendum during its meeting at the Fairgrounds restaurant here Tuesday. During the vote, some of the members declined in the actual voice vote.

Another matter to receive more of the Chamber's meeting time was the need for 24 hour protection in the City of Harrington, as President Leroy Calhoun stated, he was "a very lucky boy recently" when the efforts of the local police force thwarted an attempted burglary of his electronics business. Before that time, he said, there had been nights from midnight to 8 a.m. when police protection was not available in the city. The need for police protection was discussed among the members present and it was decided to send a letter of commendation to the Mayor and Town Council praising the efforts put forth by the local law enforcers.

In other matters brought before the Chamber, it was approved to donate \$100 to the JAYCEE Christmas parade, which is again under the direction of Lee Dean this year.

The matter of a weeklong City observance of the heritage of the City of Harrington was reported on by committee members Robert Taylor and David Jones. Acting on a suggestion raised at the September meeting to have some sort of celebration or week of activities that would involve merchants having sales and participating in some sort of heritage theme, both men elaborated on the idea. It was suggested that perhaps a scheduling of area activities might be of interest and enlightenment to the community. Among these were butter making, quilting and weaving and other related farm activities, as well as suggestions about tying in possible railroad activities as well. It was suggested that merchants might observe the week before the Christmas parade, which is set for December 6, as the time for scheduling such activities.

They remarked that participation by interested members of the community as well as suggestions would be welcome. This gives the citizens of Harrington a chance to reflect on its heritage during the bicentennial time, as a member indicated during the meeting.

## Referendum— Definite Need

On November 12 approximately 6000 persons will be eligible to vote on a vital issue that affects every man, woman and child in the entire Lake Forest School District.

Voters will be determining whether they want to add eight classrooms, an addition to the gymnasium and a multi-purpose auditorium at the high school as well as badly needed additional space to the Lake Forest North cafeteria.

In the past, referendums have not done well here, perhaps because it is the voter's last real chance to say no to higher taxes.

This referendum, we are told, would provide all that is needed in the school district in the way of building space for quite some time.

It is time to see beyond our prejudices...be they geographical, racial, or whatever, and look to the future...our young people.

This district is very large. It can only continue to increase its population, if only by new people moving into the area. The enrollment will not drop because of the 'pill'. It is expected to level off to 1200 and remain at that figure after the peak expected in 1978. This is still 450 over capacity at the present high school.

No one wants higher taxes, it's true. The referendum would mean seven to ten cents more per \$100 than the \$1.07 per \$100 of assessed value on property now.

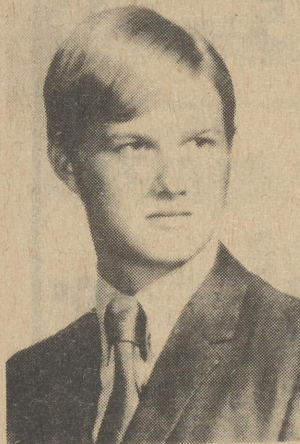
There are no frills in this package. The auditorium, which is designed for 1200, will be a multi-purpose facility, which will include teaching areas. It will not be used once or twice a year. The idea is to use it daily. The proposed auditorium would also benefit the community in numerous ways. At the time this school district is the only one in the state lacking an auditorium.

Consider the alternatives...possible split shift scheduling...possible loss of accreditation (where students have difficulty being admitted to higher places of learning. The continuous jam of students...the friction, the inconvenience...does 10 cents more sound like too much?

Aren't the young people of this school district worth it? We think they are.



Miss Lynn Parker



Olin Davis, Jr.

## HTA—Stevens Awards Presented

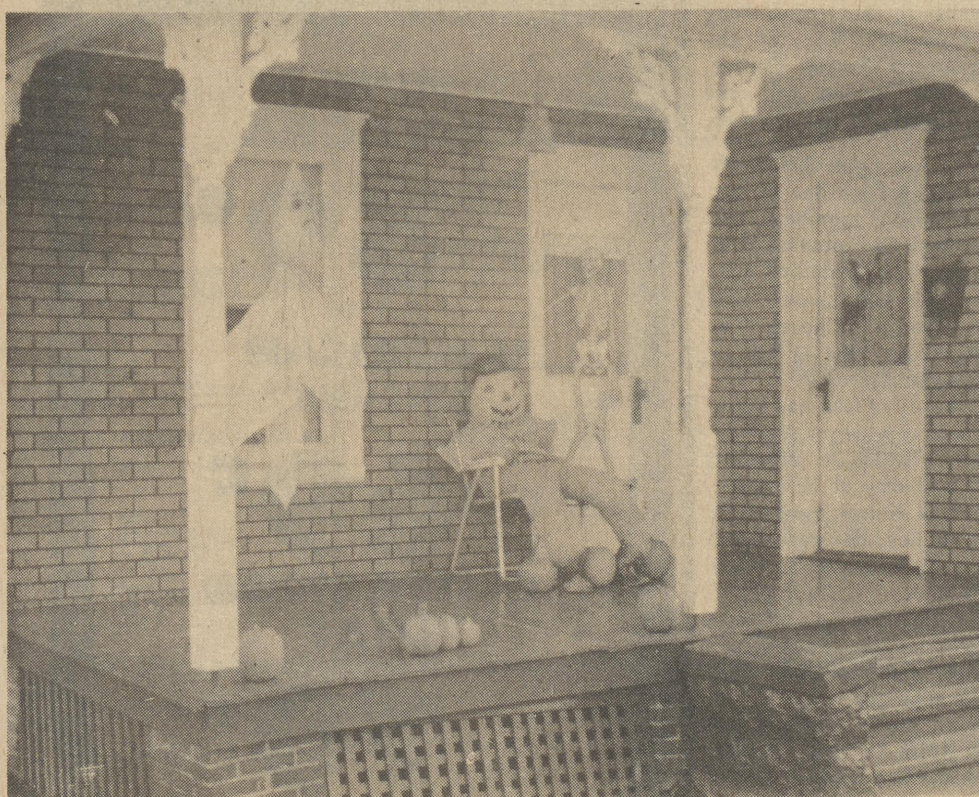
Lynne Parker and Olin Davis, Jr., both of Harrington, have been awarded grants in the third annual Harness Tracks of America-Harry M. Stevens scholarships. Miss Parker received

a \$750 grant while Davis was awarded \$500 for the current school year. The scholarships are given annually to the sons and daughters of participants in harness racing.

The HTA-Stevens awards were inaugurated in 1973 when the nationally-known racetrack and sports catering firm, Harry M. Stevens, Inc., joined with Harness Tracks of America, the trade association of North American standardbred tracks, in establishment of a college scholarship fund for needy and deserving children of participants in the sport. Since that time the Stevens company has donated \$12,500 to the fund.

The daughter of veteran harness horse trainer/driver Jack Parker and Mrs. Parker, Lynne is in her first year of study at Western Maryland college.

An accounting student at the University of Delaware, Olin Davis, Jr. is the son of standardbred trainer/driver Olin Davis, Sr. and Mrs. Davis. Davis has been a recipient of an HTA-Stevens scholarship in each of the three years the grants have been awarded.



Shown here is the Carl Buck home at 15 Center Street, Harrington.



Herman Schulze pauses to discuss the fifty year old business he and his brother have operated at Greenwood and are now closing.



Shown left to right taking final inventory are Carl and Herman Schulze, Herman Schulze's daughters, Nera and Herla.

## Arrest Robbery Suspect

George Andrew Turner, 21, of R.D. Harrington, was arrested by Harrington Police and brought to Magistrate Court 6 and was committed to Sussex Correctional Institute in default of a \$25,000 bond in relation to the Quillen's Market robbery last month. Turner was arrested for taking part in robbery of the market located on Dorman Street here.

William Thomas Lynch, 21, of Greensboro, Maryland was committed to Delaware Correctional Institution in Smyrna for the possession of marijuana, when a routine traffic violation mushroomed from one to four violations. He is serving thirty days for the four violations and his car has been impounded by the Harrington City Police.

## Homecoming Set For Lake Forest

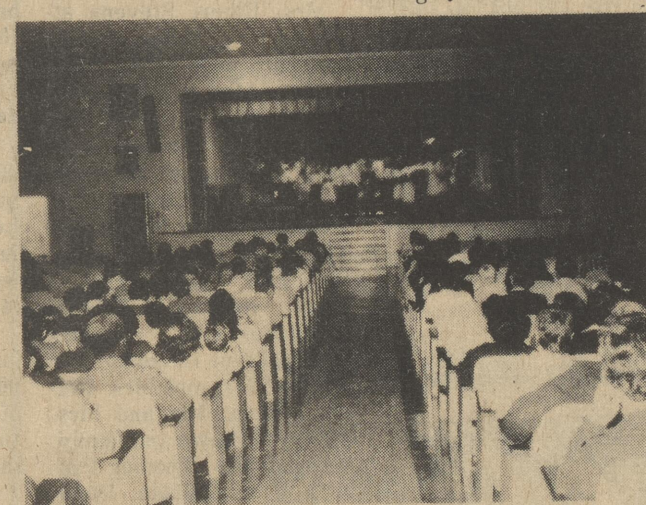
Halloween it may be, but more important for Lake Forest is the fact that Friday, October 31 is Homecoming night. The festivities get underway on Friday with a parade in Harrington at 6:30 p.m. and proceed to the W.T. Chipman field where the Spartans will battle the Falcons of Dover Air Force Base.

This year's parade route begins on Reese Avenue and turns on to Commerce St. then to Clark St. The marchers will turn off Clark St. at Delaware Ave., continuing on that route to Center St. and the school grounds.

1976 Parade Marshals are Robert Draper and Robin Degnats. They will lead off a parade featuring the five candidates for the title of this year's Homecoming Queen: Vera Coleman, Barbara Richter, Cheryl Lissy, Mary Jean Mason, and Darlene Mosley. Other parade participants include Miss Harrington, Margaret Kinney; Miss Felton, Robin

est high School Band and the W.T. Chipman Band. On hand will be fire companies from Felton, Frederica and Harrington.

Highlighting halftime activities at the Spartan-Falcon game will be the crowning of this year's Homecoming Queen.



Scene Tuesday night at the Woodbridge H.S. Open House. The choral group at the high school performs under the direction of Richard Milne.

## Woodbridge High Has Open House

Approximately a hundred people turned out Tuesday night for the open house at Woodbridge High School.

In his opening remarks, high school principal Robert Sutton briefly touched on vandalism at the school as a minor element of the school. He proceeded to cite the law governing this sort of thing in the Town of Bridgeville.

At this time of the year, there is a curfew which is that no child may be out on the streets after 9:30 p.m. three days before Halloween and for three days after this day. The trick or treaters may only do this on Halloween, and it is unlawful to

trick or treat after 5 p.m. There is to be no throwing of water balloons, water cans, or similar items. Persons are not to be in the cemetery after dark, and it is unlawful for outsiders to trick or treat in Bridgeville. The fine may range from \$5 to \$25 for violation.

Sutton disclosed that there are between two and five percent of the student body in most schools who feel school is useless and pointless. He went further to state that this school district is a wholesome one that there is an excellent student body and "an excellent faculty doing the best with what we can with what

we have." He views a much better attitude this year among the student body about school than in prior years.

## James O'Neal Dies Suddenly

James W. O'Neal, 52, of Harrington, died Monday in a hospital in Elizabeth City, N.C., following a short illness. Mr. O'Neal was in North Carolina on a fishing trip.

He was a foreman with a Diamond State Telephone Co. He is survived by his wife, Roberta O'Neal; a son, Steven M. of Harrington; a daughter, Peggy Coyle, of Harrington; a brother, Frank, of Harrington, and three sisters, Virginia Paquette of Milford, Frances Hatfield of Farmington and Joyce Keller of Townsend.

Graveside services will be held this morning (Thursday) at 11 at Hollywood Cemetery, Harrington. In lieu of flowers the family suggests contributions to the Delaware Heart Association, 937 Sunset Terrace, Dover.

## Fifty Years of Business for Greenwood Brothers

After 50 years of business, the familiar Schulze Bros. of Greenwood at the intersection of U.S. 13 and Delaware rt. 16 will close its doors before the end of the year.

The founders and owners of the business that sold around 50 Chevrolet cars and trucks annually over the past fifty years came to Delaware with their German immigrant parents in 1910.

Brothers Carl Jr. and Herman Schulze were two in a family of five children, of whom four are left, the family was brought to the Greenwood area by the father, Carl Schulze, Sr. who had worked in the Kansas coal mines prior to coming to Delaware to look for a better life.

The brothers initially were farmers, one having a 250 acre farm and the other an 88 acre farm. As Herman Schulze remarked "I think we always worked pretty hard..." at the time the garage business looked more profitable... Schulze remarked that they kept the farms instead they probably would be ahead today, considering the value of property today.

As he continued to work in the final inventory of every item left in the store, which will either be sent on

to distribution points for General Motors or sold at auction after the business closes, Schulze reflected briefly on the past 50 years.

"The two of us are all who have been interested in the business officially", remarked Schulze. Brother Carl was the salesman primarily, while Herman Schulze handled the other aspects of the business, which included servicing what they sold.

Schulze said they had accumulated quite an inventory of obsolete parts over the past 50 years, but "they have cleaned us out" he remarked about people who had been seeking old parts. If L.G. Burton failed to have a part a customer needed for an older car, said Schulze, they would be referred to the Schulze Bros. who usually could find the necessary item. It was felt that some older items would be available by the time of the auction.

Fifty years brings many changes and as Schulze observed when they started out in business, they were selling cars to people who had never had cars before. Horses and buggies were seen as frequently as cars. The buildings and homes that face the Schulze building were newcomers.

Their business began at the present site, but they

moved across to what is now the Sunoco station on the opposite corner, and were to stay there until 1936. During the time, the old block building that was only five or six feet from the road was torn down, to be replaced by the familiar brick building that sat farther off the road.

The two brothers, who live within walking distance of their business, have also had time for recreation together over the years. One of their pastimes is fishing. During World War II, remarked Carl Schulze, there was no gas to be had for luxury boats. The two brothers proceeded to hand black crepe on their boat.

The wry sense of humor surfaced on the very busy day the Journal visited the business. As brother Herman quipped, he was "getting tired of making money." Both men plan to spend more time fishing and Herman Schulze plans to work more in his garden and perhaps do a little more church work.

Several of the children were assisting in the final inventory, including Buell, son of Carl, Jr. and Nera and Herla, daughters of Herman Schulze.

Rebecca Susan Eliason

## Is Lake Forest Winner In Scholarship Competition

Rebecca Susan Eliason has been chosen as the Lake Forest High School winner in the Bicentennial Seniors scholarship competition. This Lake Forest competition is part of a nationwide scholarship program for high school seniors currently being conducted by the National Association of Secondary School Principals with funds from the Shell Oil Company.

Miss Eliason's winning composition consists of a "Bicentennial Minute" and a commentary discussing the relevance of this "minute for today and for America's future." She also scored high on a current events test.

She will now compete with other high school winners to become one of the two state representatives to the national competition. Two winners from each state and District of Columbia will receive a scholarship of \$1,000 and an all expense paid trip to Williamsburg, Virginia from January 16-19, 1976 to attend seminars on educational and social issues and to be on hand for the selection of the national winner.

The grand prize winner receives a \$10,000 scholarship and will have his/her "Bicentennial Minute" presented on the CBS television network.

## Harrington Raceway Plans Gala Closing Nov. 1

Harrington Raceway will close its most successful 1975 Fall Meet Saturday night. In appreciation for the fine support our fans have shown, the Officers, directors and management have planned a gala closing. The gates will be thrown open and everyone will be admitted to the grandstand and clubhouse free. Prices at the concession stands will be rolled back. Food and beverage prices will be less than half their current price. Track goers will again enjoy a 25c hot dog.

With all the rainy weather, increased competition from surrounding tracks, and a drawn out world series, the track is still enjoying one of the better Fall Meets. The racing has been very competitive and the track has been superb throughout this rainy fall. The track race record has been equalled here when To Ri Boy paced the half-mile oval in 2:01 3/5 Sunday

night October 12th for Eddie Davis.

The series of Delaware Standardbred Development races which drew the best grade of horses ever in its seven year history also attracted some of the top drivers in the country. Jimmy Porter of Goldsboro, Md. continues to be the leading dash winner, while Dicky Lewis of Laurel is the leading percentage driver.

The meet will conclude Saturday night, so plan to enjoy the big closing. Post time is 8 p.m.

## Notice

Notice to Houston residents. There will not be a trick or treat night in Houston as reported last week. There will be instead a Town Halloween parade on October 30th beginning at 6:30 p.m.



Casper The Ghost float  
Cub Scout Pake #116 front  
view.

...and Casper The Ghost  
rear view. One of the 40  
some odd floats in the Hallo-  
ween parade on Saturday.



The Woodbridge High School color guard and... the Woodbridge marching band  
under the leadership of Richard Milne.



Two of the 100 mummers marching in the Halloween parade on Saturday in Milford.



Milford Jaycees float in Halloween Parade.



The W.T. Chipman Junior  
High School majorettes  
during the Milford  
parade on Saturday.

The Chipman School band won first place  
in the Junior High Bands.



The Lake Forest High School color guard 2nd marching band at the Jaycee Halloween Parade on Saturday.

# Hundreds Enjoy Milford Halloween Parade

Despite the rainy overcast day, hundreds of Milford residents and many from the surrounding towns and communities turned out for 19th Annual Milford Jaycees Halloween Parade. This year the festive event was held during the day time. Marred last year by egg throwing at several entries, the Jaycees decided that this year's parade would be held during the day time. No incidents were reported and the parade went off on schedule.

The parade was made up of 40 plus floats, over 100 mummers and seven school bands. The bicentennial award winning Sussex Central Junior High School band demonstration was overwhelming to the crowd. This band was not judged during this parade. The Seaford High School band with its drummers decked out in revolutionary uniforms and dress won the coveted first prize of the parade. Second was the high stepping Lake Forest High School Band, and third was the Woodbridge High School band

under the guidance of their new band director Richard Milne. Woodbridge is under a building program with its band, and has already shown great strides with its program.

The award for the junior high school bands was won by the W.T. Chipman band in their new uniforms provided for under a drive last year by the Band Boosters of the Lake Forest High School.

The fire company division was won by South Bowers; second, Houston; third, Frederica. The fire companies were judged on the number of pieces and their over all appearance.

The organizational floats was won by Faith Missionary Church of Bridgeville. Recently this group, which is non-denominational, purchased the old Bridgeville theatre and converted it into a chapel. They have also taken an active part in festivities in the surrounding area. Second place in this category was won by the FFA of Milford and third

by the Cub Scout Troop #186.

Business floats class was won by the Milford Pharmacy. Second was Kent and Sussex Tire co.

There were several riders on horse back and in the horse group, the Harrington Pony Club behind a real live starting gate won first prize. In second place were the three Musketeers.

Several area residents participated in the antique car class. Ear. Emory of Milford won first place with his 1911 International Harvester Auto wagon. Sam Kemp had several entries and finished second with a 1912 Model "T" Ford.

There were about 100 or more mummers in the parade. Mummers in a group class was won by The Wizard of Oz group from Milford. Second place went the the Bunny Girls, and third went to the Possum Point Players.

Individual mummer award went to Johnny Applesed and second was won by Roy Dill.

## Of Local Interest

By Edythe Hearn

Mr. and Mrs. Howell Hitchens recently spent several days in colonial Williamsburg, Va.

Mrs. Edythe Hearn is now at home following surgery in Milford Memorial Hospital and takes this space to thank everyone for their cards, flowers and prayers.

Mrs. Elsie Mayfield of Ft. Worth, Texas visited her sister and brother-in-law, Mr. and Mrs. Preston Dill and other relatives and friends recently.

Mr. and Mrs. Kenneth McKnatt observed their 35th wedding anniversary last week.

Mrs. Betty Hoffman observed her birthday this week.

Mrs. Mary Erickson and Mrs. June Whittlesberger of West Palm Beach, Fla. are visiting with Mr. and Mrs.

Fred Martin. Mr. and Mrs. Fred Martin and their guests spent part of last week in Youngsville, Pa. and Jamestown, New York.

Mrs. Elbert Stevens attended a convention in Baltimore last week. Mrs. Stevens and Mrs. Edith Massey visited Mrs. Elsie Walker and nephew Leonard Stevens in Wilmington last week.

A 14th birthday party honoring Ronda Melvin was held at the home of Mr. and Mrs. Jack Carpenter, Saturday evening. Several classmates and relatives were present including: her parents, Mr. and Mrs. Roland Melvin, Mr. and Mrs. Raymond Brown and family, Mr. and Mrs. Thomas Pepper, Mrs. William Dodd, Mrs. Maude Dickerson, Mr. and Mrs. Wayne Melvin and daughter, and Mrs. Jack Carpenter and Mrs. Blanche Mitchell.

Mrs. Alice Etherington of Lincoln spent Saturday with her parents, Mr. and Mrs. William Hearn.

Mr. Granville Hill is on the sick list this week. Louis C. Welch II is a patient in a Philadelphia hospital where he underwent surgery Tuesday morning of this week.

Mr. and Mrs. Carroll Welch, Sr. Mr. and Mrs. Woodrow Welch and Mr. and Mrs. Samuel Welch visited Mr. and Mrs. Marine Welch in Rehoboth, Sunday.

Mr. and Mrs. Welch of

Rehoboth will soon be moving to Arizona.

The Choir Mothers of Asbury Methodist Church to Williamsburg, Va. Saturday by bus.

Lloyd Dimmitt enjoyed a few days visit with relatives and friends in Des Moines, Iowa recently.

Debbie McKnatt and two friends and Mrs. Judy Renfro met the Asbury Choir Mothers at the information desk and spent the day in Williamsburg, Va. Saturday.

Mr. and Mrs. Roland Eilers and Mr. and Mrs. Elmer Brown were Saturday evening guests of Mr. and Mrs. Willis Rust. Mr. Rust was observing his birthday Saturday.

Mr. and Mrs. Charles Coverdale and Mr. and Mrs. Elmer Brown attended the Rotary Club dinner in Burrsville Saturday evening.

Mr. and Mrs. Jehu Camper once again had the privilege of showing their beautiful wood carvings at the "Arts and Crafts" show held at the Armory in Smyrna Saturday and Sunday.

Mr. and Mrs. Ken Outten and children were dinner guests of Mr. and Mrs. Leroy Betts Saturday. Later in the evening Chuck Hurd was the guest of the Outten family.

Charles Morris underwent surgery in St. Frances Hospital, Wilmington, Tuesday of last week. He is improving and is expected to be home the later part of this week.

## Senior Citizens News

Monday the Jolly Timers Kitchen Band visited Milford Manor house and entertained the patients.

Ruth Nasser visited and showed a film of Loral & Hardy, which gave members a lot of laughs.

Wednesday was blood pressure day again with the nurse attending and taking the members' pressure. In the afternoon we played Brown Bag Bingo.

Thursday, Rev. Colnal, Rev. Huff with some of his members visited us and gave a history of Black Americans which was very interesting. He gave us names of men who are mayors of some of our large cities, some in politics, some in public businesses and many in sports.

The ladies sang a quartet and Mrs. Nellie Tyler and Mrs. Elma Thorpe each sang a solo.

Mrs. Leah Coleman gave a recitation she had remembered since childhood. Everyone enjoyed the program.

Friday was bowling day again with 11 members at the lanes and six getting over 200 pins for the two games they rolled. Elbert Stevens was high man with 278, George Goodge 256, Jim Keenecki 255, Fred Littmann 234, Dan Neel 215 and Ann Brennen 211.

Don't forget the Country Wide Halloween Party at Clayton Friday, Oct. 31. All

The children of Mr. and Mrs. Samuel (Sam) Short cordially invite you to join in the celebration of their parents' 50th wedding anniversary. All friends and relatives are welcome at the Harrington Century Club on November 9 from 2 to 5.

Mrs. Ethel Brown and daughter Nancy, Mrs. Rachel Brown and children and Mrs. Brown's mother, all of Denton, called on Mr. and Mrs. Howard Anthony. Saturday afternoon.

Mr. and Mrs. John Donovan of Wilmington were dinner guests Sunday at the home of Mr. and Mrs. Howard Anthony.

Mr. Ralph Milbourne and daughter Carol visited Mrs. Harry Murphy Saturday afternoon.

Mrs. Pauline Morgan, Mrs. Verdella Harrington and Miss Christine Hopkins visited in Penna. Saturday.

Visitors of the Emmet Bakers during the week were, Wilson Davis, Francis Baker of Felton and Mr. and Mrs. Arthur Baker of Frederica.

Callers at the Clarence Anthony home over the weekend were Mr. and Mrs. John Donovan of Wilmington Shelton Hayman and son, Albert Vincent and Stevie and Jimmie Fitzhaugh.

Mr. Ernest Brown of Denton visited his sister and brother-in-law, Mr. and Howard Anthony, Friday afternoon.

Mrs. Patrick Rissmiller and son of Glen Burnie, Md. are spending part of this week with her mother, Mrs. Hazel Riley.

# FOOD RITE



Gov't. Inspected, 3 1/2 lb. avg.

Roasting Chicken	59¢ lb.
Food Rite Quality, Lean Beef Cubes	\$1.39 lb.
Country Style Smoked Sausage	\$1.29 lb.
Select Beef Liver	79¢ lb.
Zesty, Full of Flavor Sauerkraut	2 lb. bag 39¢
Fresh Sausage	\$1.39 lb.
Food Rite All Meat Franks	1 lb. pkg. 99¢
lean Short Ribs	\$1.79 lb.
Whole Pork Loin	Cut To Your Satisfaction \$1.39 lb.

FRESH FLAVOR YEAR ROUND FROZEN FOODS

Morton Pot Pies	5 8 oz. pkgs. \$1
•Beef•Chicken•Turkey	
Donald Duck Orange Juice	32 oz. can 99¢
Ore Ida French Fries	2 lb. pkg. 49¢
Regular or Crinkle Cut	
Dairy Foods	
Nu-Maid Blue Bonnet Margarine	Margarine
[in coffee mug]	
3 8 oz. mugs \$1	2 lb. pkg. 99¢
Food Rite Large Eggs	67¢ dozen

## Delicatessen Corner

SLICED JUMBO BOLOGNA 59¢

1/2 lb. SLICED AMERICAN CHEESE 69¢

1/2 lb. OLD FASHION LOAF 79¢

PERSONALIZED SERVICE FOR ALL YOUR DELI NEEDS



**Loin Cut Pork Chops**      **Center Cut Pork Chops**

**\$1.79**  
lb.

Lean, Meaty

**Spare Ribs**

**\$1.39**  
lb.

Gov't. Inspected  
Food Rite

**Turkeys**

18 to 22 lb. Avg.

**63¢**  
lb.

Cook O' The Walk  
Whole, Unpeeled

**Apricots**

**2** 29 oz. cans **\$1**

Food Rite

**Catsup** **3** **\$1**

14 oz. btls

Food Rite

**Fruit Cocktail** **3** **\$1**

16 oz. cans

Kounty Kist Cut

**Asparagus Spears** **3** **\$1**

10 1/2 oz. cans

Libby's Sliced, Red

**Beets** **3** **\$1**

16 oz. cans

Star Kist Chunk

**Light Tuna** **2** **\$1**

6 1/2 oz. cans

**Lovin' Spoonfuls**

•Liver & Chicken•Tuna  
•Liver•Chicken•Beef

**3** 12 1/2 oz. pkgs. **\$1**

Homespun, White

**Napkins** **49¢**

pkg. of 200

**Ajax Cleanser**

**5** 14 oz. cans **\$1**

Kounty Kist

**Pork & Beans** **3** **\$1**

31 oz. cans

Del Monte Cut

**Green Beans** **4** **\$1**

16 oz. cans

**Peanut Butter**

Chunky or Regular

**12 oz. jar** **59¢**

**Viva Towels**

•White•Decorated  
•Assorted

**2 big rolls**

**99¢**

**Pringle's Potato Chips**

69¢

9 oz. Container

Classic Kosher

**Spears** **59¢**

24 oz. jar

**Cheer Detergent**

**\$1.89**

King Size box

**Hefty**

**Trash Can Liners**

**\$1.79**

pkg. of 20

100 ft. roll

**Handi Wrap**

**39¢**

Gold Medal

**Flour** **69¢**

5 lb. bag

**Lestoil**

Liquid Cleaner

**85¢**

28 oz. btl.

Food Rite

**Sliced Bread**

**3**

22 oz. loaves **\$1**

**PRODUCE**

New Crop

**Emperior Grapes** **39¢**

lb.

**MacIntosh or Staymen Apples**

**59¢**

medium

**Green Peppers**

**4 for 49¢**

Fresh, Crisp  
Cello

**Carrots**

**5** 1 lb. pkgs. **\$1**

Fresh, Full of Flavor

**Coconuts**

**49¢** each

Tangy

**Apple Cider**

**\$1.59**

gallon

New Crop  
Florida

**Egg Plant**

**39¢** lb.

Fresh, Tender

**Brussels Sprouts**

**59¢** pint

89¢ 1/2 gallon

**Fluffo Shortening**

**\$1.69**

3 lb. can

**Store Hours**  
Mon-Wed 9 to 6  
Thurs-Sat 9 to 9

**QUILLEN SHOPPING CENTER**

Prices effective Oct. 30, 31,  
and Nov. 1.

We reserve the right to  
limit quantities.

**Let's Talk Turkey!**

**FREE!**



**10 to 12 lb. Food Rite Thanksgiving Turkey**

or a Super Discount Price on any Larger Size Food Rite Turkey!

Accumulate ALL your cash register tapes from your purchases every time you shop at your Food Rite between now and Nov. 26, 1975.

The Total Dollar Accumulation of these tapes Determines the price you pay for your Food Rite Turkey.

All turkeys **MUST** be redeemed by the close of business Nov. 26, 1975.

No substitutions can be made on this fantastic offer. Limit one per family, please.

Offer good on all purchases Excluding Cigarettes

**Redeem Your Cash Register Tapes Per The Schedule Below . . . .**

**10 to 12 lb. Turkey FREE with Tape Accumulation of \$200**

**12 to 24 lb. Turkey 23¢ per lb. with Tape Accumulation of \$200**

**10 to 12 lb Turkey 19¢ per lb. with Tape Accumulation of \$150**

**12 to 24 lb. Turkey 33¢ per lb. with Tape Accumulation of \$150**

**10 to 12 lb. Turkey 29¢ per lb. with Tape Accumulation of \$100**

**12 to 24 lb. Turkey 43¢ per lb. with Tape Accumulation of \$100**

**This Offer Valid Only On Our Food Rite, Top Quality Turkey!**

THE HARRINGTON JOURNAL  
NEWSPAPER, INC.

HARRY G. FARROW, JR. . . . . Publisher  
MARGARET R. FARROW . . . . . Editor  
Subscription Rates . . . . . \$5.00 per year  
Out of State . . . . . \$6.00 per year

Office of Publication, 1 Commerce Street, Harrington, Delaware. Second class postage paid at Harrington, DE 19952.

**Publisher's Choice**

Harry G. Farrow, Jr. Publisher

"...we cannot afford the award mediocrity when perfection is what is needed achieved through education, dedication and hard work."

We are where we are by our doing. Over the past twenty years however, a number of land mark decisions have been reached by the highest court in this land which have for the most part changed our way of life. Many of these decisions have been based in part upon civil matters and in particular civil rights matters. There is no argument on this point. For discrimination of any kind toward anyone or sex should not be tolerated. On the other hand, a great many cases before the high court have been matters criminal in nature. Although the court in rendering the decisions has done so in an effort to protect the rights of all citizens, it by and large has built a shield around the defendants. As a result of these decisions, a definite impression has been left with us that smacks in permissiveness. This in turn has developed a society that accepts or is forced to accept mediocrity.

We should not be forced to accept this or for that matter tolerate it. Society for the most part appears to have a dim view of education. I was brought up in a different atmosphere. Not a good student by any means. I worked hard for what I got...and for the most part still struggling. Without that feeling and desire brought on by pressure, I most probably would accept mediocrity...and just slide along.

Our school district seeks a referendum vote next month on an important bond issue designed to bring about more space for an already crowded school and better facilities for those students. Education does not embrace the arts and academic program alone designed solely to turn out straight "A" student. For those who become craftsmen, education affords a pathway for perfection and achievement for them. Believe me we need them in our society NOW...

TODAY. The generations to follow us are growing up in a very scientific and complex society. They need the best that education can attract and deliver. Without the highest form of education a society or a community or for that matter a school district can provide. We will sink to lower depths while surrounding areas and school districts are moving ahead. We cannot adopt the lower view and we cannot afford to award mediocrity when perfection is what is needed achieved through education, dedication and hard work.

**Immunization --  
Don't Neglect It**

This is national immunization month. For those Americans who still suffer from the ravages of polio and for those of us who remember the iron lung and the long uphill fight aided by miles of dimes to raise funds to conquer the dreaded disease, it seems incredible that immunization today is not 100%. Yet during the past several years, a growing number of young children entering school have not received protection from polio, nor have they been vaccinated against measles or diphtheria, also serious illnesses, especially for the young.

Indications from the state health department this year show the immunization figures have risen slightly from previous years. There is no excuse, however, for any child to go without protection from these illnesses, especially when it is available. There is no time like the present to take care of immunization, if it has not been done. Just because there has not been an outbreak of polio or diphtheria recently doesn't guarantee that it will not happen. The disease has not been destroyed, but the means to keep it from loved ones has been discovered. Be grateful and use them.

**Don't Forget**

The Spaghetti Supper at St. Bernadette's

on Sunday 1 to 5 p.m.

**Play The Name Game  
you could win.**

Winners last week

Lester Lawton

There are two names in the paper this week.

\$10.00 if subscriber  
\$5.00 otherwise

**McKnatt  
Funeral Home**  
50 Commerce St.  
HARRINGTON, DEL.  
398-3228

YOUR PLACE  
of MIND and HEART  
OUR FIRST  
CONSIDERATION

**Weekly Report**

by Senator Joseph Biden

As every Delawarean knows, one of our prime assets as a State is our beaches, which each summer attract tens of thousands of visitors, not only from Delaware, but from the entire East Coast and beyond.

Wouldn't it be nice if we could add several hundred more acres of prime beach land to what we already have, including more than a mile of ocean-front? Well, I think we can -- by getting the Army and the navy to give up land at Cape Henlopen which, I believe, should, at the least, be opened to the public, and preferably returned to the State of Delaware.

Let's start with the Army. Three years ago, the Army told my predecessor, Senator Boggs, that it intended to transfer 190 acres of land it owns at Cape Henlopen to the State of Delaware for recreational purposes.

The trouble is, that transfer has yet to take place. The Army is dragging its feet -- because it continues to use the property as a recreational facility for high-ranking officers. It also insists on using the land for Army Reserve activities, which include training with huge amphibious vehicles called LARKS. The only problem is that these monsters are doing a great deal of environmental damage, despite the fact that they are virtually obsolete. Their function has been largely replaced by the use of heavy-lift helicopters.

That is why I have written to Army Secretary Martin R. Hoffman to insist that the 190 acres be transferred to the State "unencumbered by restriction."

**Counselor's  
Corner**

By Dan Newman

Question: How can students know if they will be Eligible For Financial Aid?

Answer: The CSS workbook, Meeting college Costs, helps students and their parents estimate how much they can afford to pay and how much financial aid they will need in order to attend different institutions. This is especially helpful to many middle-income families who may think that they will not be able to qualify for any financial aid. The truth is that many middle-income families are eligible for financial aid and should be encouraged to submit an application. Even if a college does not have enough funds to make an award, knowing that a family needs help gives the college the opportunity either to arrange for a payment plan that the family can manage or to refer the family to loan sources.

**Career Corner**

by Buck Thompson

printed in The Journal for youths

Mice . . . rats . . . rabbits . . . dogs . . . cats . . . monkeys . . . (even chickens and iguanas!) are a few of the animals used today in biomedical research laboratories. As a laboratory animal technician, you could take part in the care and/or use of these animals -- a growing job field.

Because of a rising demand for competent care and use of lab animals, nearly 20,000 new laboratory animal technicians are likely to be needed during the 1970's. At present there are more job openings than qualified technicians to fill them.

Technicians are employed by medical, dental, and veterinary schools; hospitals; pharmaceutical houses; colleges; research institutes; breeders of lab animals; and diagnostic and testing labs. They work in the food and cosmetic industries, public health agencies, and many other technical governmental programs.

There are two major categories of work for technicians: animal husbandry and laboratory technology. Animal husbandry includes the daily care, breeding and feeding of the many different kinds of lab animals. Animal lab technology involves the various procedures done with animals in lab work. This may include giving injections, taking

The Navy has a somewhat better record. A number of years ago, the Navy did return to Delaware 240 acres of land (out of 630 acres it originally controlled). The problem is that it attached an unusual number of restrictions which severely limits public utilization of the property at Cape Henlopen, and puts a severe burden on the State of Delaware to perform maintenance chores and other duties on behalf of the Navy, and requiring substantial capital expenditures by the State.

As a first step, I have urged the Navy to drop

**DuPont Reports**

The Student Congressional Intern Program (SCIP) is a unique program which I initiated shortly after I first took office as your Congressman. This month we are entering the fifth year of the program and the realization of this fact caused me to reflect upon the program.

In thinking about this effort, I believe that it is one of the most satisfying experiences that I have had while serving as your Congressman. Each time a tour ends and I realize how much more the students know about their government and how much more aware they are of national and international events, it makes all the work that goes into the program worthwhile.

The students are all affected by the experience. Several have gone so far as to change their educational plans in favor of careers in politics and government. I feel this is especially important in these days when so many young people are unwilling to become involved in their government.

**Thoughts . . . . by Senator William Roth**

One reason so many costly government programs have failed to deliver the results promised is that our Federal bureaucracy is so big and inefficient.

Consider the waste and duplication in the way Federal assistance is provided to state and local governments: At least 14 separate units within the Department of Health, Education, and Welfare administer educational assistance programs for the handicapped.

Some 25 different Federal bureaus, services, and offices conduct or support research on water pollution. Eleven different Federal programs provide funds for child-care activities.

There are seven Federal programs furnishing funds for out-patient health services.

these restrictions. But in the long run, a Naval presence at Cape Henlopen is a best incompatible with the operation of the Delaware Seashore Park. I have asked the navy to explain exactly what mission requires it to retain as much land as it does at Cape Henlopen. In other words, I want the Navy to prove to me that it has a case for not returning the entire parcel to the State.

These are prime beach areas that could be utilized by thousands of Delawareans and our visitors as part of an expanded Delaware Seashore Park.

That's where I think they belong.

We have even received letters from parents who tell us that they have learned more about the government than they had known before their son or daughter received the opportunity to spend a week visiting the Washington office and talking with Members of Congress.

As I enter this final year as your Congressman I want to publicly thank all the people who have contributed time, money or effort towards making the program the great success it has been. That includes the sponsors, chaperones, teachers, parents, our Senators Boggs, Biden, and Roth, and last but not least, the members of my staff.

To paraphrase a former member of the British House of Commons, I think the combined efforts of all those associated with the program have made 200 Delaware high schools students easier to lead but more difficult to drive; easier to govern, but more difficult to enslave.

By and large, these are programs with similar purposes that are administered under different sets of Federal forms, rules, and regulations.

One of the pieces of legislation I have introduced is intended to bring some order to this chaos. It would permit the President to merge grant programs with similar purposes into a single, consolidated program under the jurisdiction of a single Federal agency.

Such an action would not affect the amount of Federal funds received by local and state agencies in Delaware, but it would mean that they would get these funds more quickly, with fewer bureaucratic hurdles to cross. It would also reduce administrative costs.

of ability. At the first level, the assistant laboratory animal technician is an animal caretaker. For caretaker jobs, you must pass an exam after one year's experience. A brief AALAS-sponsored course may substitute for the work experience.

At the second level, laboratory animal technician, three years of work are required. Graduation from a two-year laboratory animal course can be substituted for two years of experience.

Certification at the third level, laboratory animal technologist, requires six years experience. College work in biological science and laboratory science can be substituted for some work experience (you need two years of college plus four years of experience or four years of college plus two years of experience.)

Exact job titles and requirements vary from employer to employer, but certification usually helps the workers qualify for advancement. About 3,400 people in the U.S. and Canada are certified so far. Earnings range from \$2.90 per hour to \$3.75 per hour for beginners with no experience. Top salaries average \$15-16,000. A few technologists earn up to \$19,000 a year, if they have teaching or supervisory duties.

**Days Of Our Years**

Ten Years Ago

Fri., Oct. 29, 1965

Hobbs Newstand was painted this week.

Melvin Wyatt of Harrington was installed as president at last week's meeting of the Kent Co. Vol. Firemen's Association at Little Creek.

Robert Smith, son of Dr. and Mrs. Robert H. Smith, of Harrington, has been elected treasurer of the 6500 member freshman class of the University of Maryland.

Felton: William Green, son of Mr. and Mrs. Johnson Green, is stationed at the Lackland A.F.B., Texas.

Airman Francis W. Morris, Jr., grandson of Mr. and Mrs. Ora Brittingham Sr., who lives on Railroad Ave., Felton, has been assigned to Scott A.F.B. Ill., after completing his basic training. He is a 1963 graduate of Felton High School.

Mrs. Francis Harrington and daughter, Janet and Mrs. William Hearn and daughter, Alice, visited the Washington Cathedral and other places of interest in Washington, D.C. last Wednesday.

Mrs. H.W. Purnell has returned home after being on extended tour of Europe.

Mrs. Oliver Gamber, of Baltimore, accompanied by Mrs. Della Ryan recently returned from a trip to Houston, Texas. While there they saw the new Astro-dome.

Buck Bradley of the U.S. Navy is spending a few days leave with his parents and friends and will leave for duty in the Phillipine Islands on Nov. 4.

Susan Brown of Concord College, Athens, W. Va., flew home for a weekend with her parents, Mr. and Mrs. J. Norman Brown.

Twenty Years Ago

Fri. Oct. 28, 1955

Students from the Harrington School and interested citizens witnessed the planting of a magnolia tree on the school grounds Monday afternoon, in observance of United Nations Day.

Births: Mr. and Mrs. Dorsey Parker, Harrington, a daughter, Oct. 20; Mr. and Mrs. Cyrus Wheatley, Harrington, a son, Oct. 10; Mr. and Mrs. Robert Warren, Frederica, a son, Oct. 11; Mr. and Mrs. Gordon Edwards, Frederica, a daughter, Oct. 12; Mr. and Mrs. Chester Short, Harrington, a daughter, Oct. 16.

The erection of the superstructure of Harrington's new 200,000 gallon overhead water tower started this week.

Tommy Dorsey stopped at Irwin's Dairy Queen on U.S. 13 Wednesday night and was recognized by Bill Irwin, Dorsey, with his manager, was on his way to Seaford to play at the annual ball given by the State Police.

Houston: Mr. and Mrs. John P. Lemmon Jr. are spending a two weeks' vacation in Florida.

Hickman: Mrs. George Smith is recuperating at her home here, after having her tonsils out.

From Mrs. Slaughter's 4th grade poets:

"Halloween night is much fun, Some ring the bell and then they run, But if you are the kind who likes to eat, You'll ring the bell and say, 'trick or treat.'"

Phoebe Bullock Hobbs: While working with a corn picker, J. A. Willoughby had the misfortune to have the clothing torn from his body, but he wasn't seriously hurt.

Airman apprentice Clarence Abbott, son of Louise Abbott, Felton, is home on a 14-day leave. He will return to Quonset, R.I. Naval Air Base.

Second Lt. William M. Wix, of Harrington, completed the Signal Corps officers' basic course at Ft. Monmouth, N.J., Friday, 10 yrs. ago

**ESTATE SALE  
Of Valuable  
135 ACRE FARM  
(84 Acres Tillable--51 Acres Woodland)  
NEAR DENTON**

Under and by virtue of the authority granted in the Last Will and Testament of John O. Davis, late of Caroline County, deceased, the undersigned Personal Representatives of his Estate will offer and expose at public auction sale at the Davis farm on Foy County Road, about 4 miles east of Denton, and about 3 miles west of Hobbs, on **SATURDAY, NOVEMBER 22, 1975** at 12 o'clock Noon (Rain or Shine) the following described real estate located on Foy County Road in the Third Election District of Caroline County, Md., to-wit:

BEGINNING at a stone at the northwest corner of the Ronald Diem land (deed recorded in Liber M.C.B. No. 175, folio 542) on the southeast side of Foy County Road at the center line of the abandoned Queen Anne Railroad, thence with the southeast side of Foy County Road south 71 degrees west 25.50 perches to the northeast corner of the William D. Halstead property (deed recorded in Liber M.C.B. No. 175, folio 477) thence with the division line of the Halstead property and this property south 31 degrees east 91 perches to a stone, thence still with the division line of the Halstead property and this property south 47 degrees west 72 perches to the Kwik-Chik Realty property (deed recorded in Liber D.R.H. No. 151, folio 123), thence with the Kwik-Chik Realty property and the William Engerman property (deed recorded in Liber D.R.H. No. 104, folio 533), and the Lester W. Carroll property (deed recorded in Liber D.R.H. No. 145, folio 301), and the Stevens L. Browne property (deed recorded in Liber W.A.C. No. 101, folio 232) and the Frederick M. Stafford property (deed recorded in Liber D.R.H. No. 103, folio 596), south 38 degrees east 3 perches, thence south 10 degrees east 13 perches, thence south 5 1/2 degrees east 20 perches, thence south 21 degrees east 24 perches, thence south 31 degrees east 42 perches, thence south 75 1/2 degrees east 26 perches, thence south 34 degrees east 24 perches to the George Schaefer land (deed recorded in Liber M.C.B. No. 170, folio 94) thence with the Schaefer land north 2 degrees east 12 perches, thence north 62 degrees east 23 perches, thence north 88 degrees east 12 perches, thence north 57 degrees east 12 perches, thence north 16 degrees east 36 perches to stream of Watts Creek and center line of abandoned Queen Anne railroad bed and the southwest division line of the Ronald Diem land, thence with division line of the Diem land and center line of abandoned railroad north 41 degrees west 3,620 feet, more or less, to the place of beginning, containing 135 acres and seventy-six square perches of land, more or less. IT BEING the same land conveyed by Dorothy R. Wheatley and husband to John O. Davis in two parcels by deed bearing date the 8th day of May, 1941, and duly recorded in Liber W.A.C. No. 101, folio 229, and being all of the land on southwest side of the abandoned Queen Anne Railroad and described in a 1869 plat of survey made by Willis Corkran, Surveyor, and recorded in Liber J.W.T. No. 38, folio 340, a Land Record of Caroline County, Maryland.

TERMS OF SALE: \$7,500 down on day of sale. Balance in 30 days or as soon as the sale is ratified by the Orphans' Court for Caroline County, Md. Title charges, recording costs, revenue stamps, transfer tax, and any additional survey desired at the expense of purchaser. The farmland is tilled by James Henry on a share cropping basis for the 1976 crop year. The Sellers reserve the right to reject any or all bids. Real estate taxes will be adjusted to date of settlement.

Catherine D. Reed  
Dorothy D. Wheatley  
Personal Representatives of  
Estate of John O. Davis

Louis C. Andrew, Auctioneer  
K. Thomas Everngam, Attorney  
(A copy of the 1869 plat of survey for this farm can be secured by contacting K. Thomas Everngam, Attorney, Peoples Bank Bldg., Denton, Md. Telephone 479-2112).

**Ducks Unlimited  
Banquet**

The 5th Annual Ducks Unlimited Dinner will be held on Saturday, November 1 at the Milford Senior High School cafeteria.

Happy Hour 5:30-7:30  
Dinner - Prime rib 7:30 with auction to follow.



**JAMES W.  
RASH**  
James W. Rash  
Life, Health and Group Insurance  
Annuities • Pension Plans  
**NEW YORK LIFE  
INSURANCE COMPANY**

**Roughley Building  
398-8716**

# classified ads get the job done

## RATE SCHEDULE

All ads in this column must be paid in advance. This is the only way in which orders will be accepted for want ads. No ad order accepted for less than \$1.25 for each insertion, 25 words or less, which includes name and address, initials and telephone number which counts as one word each.

### Classified

Classified Display, per column inch	\$1.50
Public Sale, column inch	\$1.50
Card of Thanks, Memorial, per line	20c
(Minimum \$1.50)	
Legal Advertising, per col. inch	\$2.80
Ads with P.O. Box 50c Extra.	

Any ad having more than 25 words, additional charge is 5c per word for one insertion. With Black Face Print or CAPITALS regular charge is 5c per word.

Phone - 392-398-3206.

## FOR SALE

Retread Tires, \$12.95 any size, wide tracks \$3.00 extra. New tire guarant. e. Tire King, 678-2905. Located north of Dover at Cheswood light on Route 13.

STAYTON'S SELECT BORROW PIT. Select fill dirt. Open 8 to 4:30 daily. Delivered or loaded on your truck. 284-9178 or 284-4348.

'72 Cadillac. Like new. Sedan DeVille. Air power, leather interior. Blue with white vinyl top, radial tires. Lowest price. Phone 1-654-6996.

8N Ford Tractor. Excellent condition; 2 bottom 14" plows; 5 rotary mower, 3-point hitch, motor rebuilt this year. Call 398-8389 after 5 p.m.

Five cemetery lots for sale in Hollywood Cemetery. 1-301-643-5163.

Over 1,000 Remnants Sample House Used Rugs on Display Fabulous Discounts On Area Rugs and Wall to Wall Installations AIR BASE CARPET MART NEW LOCATION Edgeline Shopping Center Dover - 678-0970 Atf 3/22M

TIMBER FOR SALE Approximately 20 acres of pine timber with a little hard wood included. High land approximately 1 mile South of Lebanon on blacktop road. Best offer. 736-1227 or 734-3293.

For Sale - Envelopes, 100 plain 6 1/2 env. \$1.25; 100 window 6 1/2 env. \$1.50; 100 No. 10 env. \$1.50 The Harrington Journal office.

ESTEE LAUDER COSMETICS Ladies & Gentlemen Emanuel's Beauty Advisor, Ruth Pennington, will demonstrate products she uses. Shop Emanuel's, Downtown, Dover, today. It 10/30K

WHEN POWER FAILS, standby alternators, continuous duty. Any size. Power-take off models and motorized units available. Single and three phase models. Hiram Stoltzfus, Harrington, Del. 302-398-3006. llergna1 lezaH 10T11/27S

FOR SALE FILL DIRT TOP SOIL DRIVEWAY DIRT ALSO SEWER SYSTEMS INSTALLED PHONE 697-1694

FOR SALE-Wallpaper, Taylor's Hardware. 398-3291, Atf 2/6

WANTED SALESPERSON WANTED-From Harrington area. Prominent old line automobile agency. Address all inquiries to The Harrington Journal, P.O. Box 239, Harrington, Delaware 19952. It 3/77

WANTED Land-Timber Pulpwood LARGE OR SMALL TRACTS Delaware Pulpwood Co. 422-7324 LINCOLN

WANTED Insurance A leading Life Insurance Company has an opening for a career minded individual to sell and service insurance on an established debit in Harrington. Modern fringe benefits, excellent commission rates and on the job training available. For interview call 674-3770. It 10/2

LET'S TALK ABOUT YOUR FUTURE NOW. Career opportunity for person with sales potential but not sales experience. Leads furnished. Write Box 239, Harrington, Delaware 19952. Equal Opportunity Employer. It 5/22

Seeking success oriented individuals capable of managing others. Contact R & C Associates between 9 a.m. and 1 p.m. 697-1544. M4t 11/20B

Make \$25.00 per 100 at Home Spare Time. Anyone can. \$100.00 weekly common. Names, envelopes, postage supplied. Rush \$1.00 for starting kit. C. Cookson-979 Essex St., Lawrence, MA 01841.

Wanted: Handy man one day a week. Call 398-3602. It 11/6

VENETIAN BLIND CLEANING and repairs. Also window washing. PORTER & SONS SERVICES. 398-8756. Btf 10/30B

VENETIAN BLIND CLEANING and repairs. Also window washing. PORTER & SONS SERVICES. 398-8756. Btf 10/30B

ANTHONY GALLO Electrical Wiring, Heating, Insulating & Air Conditioning SALES & SERVICE Electric Heat, Hot Water & Hot Air Systems Phone 398-8481 If no answer call 398-8378

WINDOW & SCREEN REPAIRS Phone 398-3083 Mon. thru Thurs - 6 p.m. At 8 p.m. BILL McCOLLEY 3 Reese Ave. Harrington, Del. 7/10

Poodle Grooming by appointment; \$10. 398-8261, 398-4149. Btf 10/9B

ALUMINUM AWNINGS Manufactured to color & size FREE ESTIMATES CALLAWAY FURNITURE Harrington, Del. 1-302-398-8858 FURNITURE Discounted year round at approx 20% off. We are located 1 1/2 miles north of Harrington. Cst 11/27B

EARL L. YODER GENERAL CONTRACTOR New Homes - Additions - Panelling - Cabinets - Siding - Roofing - Ceiling - Tile Harrington, Del. 398-3750

Big Dipper Furniture Strip-ping-Road 370 near Kent Center Woodside, Del. Phone 697-3550. Refinishing, upholstery, helpful hints, 9 to 9 or by appointment, closed Sunday. Btf 5/2M

General Contractor New Houses-Roofing-Siding Home Improvement "Fine Craftsmanship at Reasonable Prices." David R. Greenly 284-4165

NEW LISTING IN GREENWOOD Spacious four bedrooms, 2-bath ranch home. Custom built 2 1/2 years ago. Fully equipped kitchen, large paneled family room, screened porch, 30'x24' shop building. Approximately 15 acres clear, 5 wooded. Many, many extras. Call today. Sizemore & Ellis Realty Co., 629-6680. Stf 10/2B

CASH FOR REAL ESTATE-WE BUY Homes, Farms, Lots and land-Anywhere in any condition. Quick settlement. Allied Associates. 422-7633. Atf 9/30M

TOWN PROPERTY FOR SALE-Corner lot. Call 398-8640. MONDAY, NOVEMBER 3, 1975 at 2:00 P.M. Daylight Saving Time. Stf 7/31B

WANTED OPPORTUNITIES Classroom side at Lake Forest North Elementary, Felton, Del., to assist with reading program, grade one. Call for application and interview date before November 4, 284-9611. AN EQUAL OPPORTUNITY EMPLOYER. LFT 10/30B

## MISCELLANEOUS

Lost - A passbook, Arundel Savings and Loan, belonging to Larry R. Hawkins. 398-4110. Hlt 10/30B

BIG YARD SALE Nov. 1 & 2 from 9 a.m. until 5 p.m. near Hollywood Cemetery on Rt. 13 in Harrington. Signs will be posted. Pit 10/30B

## Card of Thanks

We wish to thank all relatives and friends for their acts of kindness, cards, food and visits during the illness and passing of our mother and grandmother, Ella Mae Lekites. A very special thanks to Frances Hatfield, Grace Lyons and Norma Minner for their preparation and serving of food. We are also grateful to Rev. Grier for his visit and prayers, and all the pallbearers. A heart full of thanks to each and every one. Dorothy Willey Walter G. Lekites, Jr. and Families

## PUBLIC NOTICES

Sheriff's Sale OF VALUABLE Real Estate

By virtue of a writ of Levari Facias Mechanic Lien, for the sale of land to me directed, will be exposed to public sale by way of public vendue on the premises at Pecan Avenue in Woodhaven, Milford, Kent County, State of Delaware, on TUESDAY, NOV. 18, 1975 at 9:30 A.M. Standard Time ALL that certain lot, piece and parcel of land located near Milford in Milford Hundred, Kent County, Delaware, fronting on Pecan Avenue and designated as Lot 25, Section D of Woodhaven, according to a subdivision plan prepared by C. D. Murphy, Jr. on January 24, 1970, and further revised June 13, 1972, and recorded in the Office of the Recorder of Deeds at Dover in Plot Book 11 at page 7. Improvements thereon being a one story frame dwelling. Terms of sale: 20% day of sale and the balance on December 1, 1975. Sale subject to confirmation by the Superior Court and also subject to a 2% Delaware Realty Transfer Tax to be paid by the Seller and 1% by the Purchaser. Seized and taken in execution as the property of The Sea Land Corporation, a corporation of the State of Delaware, and sold by CARL M. WRIGHT, Sheriff

Sheriff's Sale OF VALUABLE Real Estate

By virtue of a writ of Levari Facias Mechanic Lien, for the sale of land to me directed, will be exposed to public sale by way of public vendue on the premises at Spruce Avenue in Woodhaven, Milford, Kent County, State of Delaware, on TUESDAY, NOV. 18, 1975 at 9:30 A.M. Standard Time ALL that certain lot, piece and parcel of land located near Milford in Milford Hundred, Kent County, Delaware, fronting on Spruce Avenue and designated as Lot 29, Section B, Block 3 of Woodhaven, according to a subdivision plan prepared by C. D. Murphy, Jr. on January 24, 1970, and further revised June 13, 1972, and recorded in the Office of the Recorder of Deeds at Dover in Plot Book 11 at page 7. Improvements thereon being a one story frame dwelling. Terms of sale: 20% day of sale and the balance on December 1, 1975. Sale subject to confirmation by the Superior Court and also subject to a 2% Delaware Realty Transfer Tax to be paid by the Seller and 1% by the Purchaser. Seized and taken in execution as the property of The Sea Land Corporation, a corporation of the State of Delaware, and sold by CARL M. WRIGHT, Sheriff

REAL ESTATE House for sale: John Leon Thorpe Estate, East Thorpe St., Harrington. Four rooms with bath; out buildings; 80 x 150 corner lot. High ground. 398-8504. 2t 10/30

Sheriff's Sale OF VALUABLE Real Estate

By virtue of a writ of Levari Facias for the sale of land to me directed, will be exposed to public sale by way of public vendue located on the premises on the south side of Delaware Route 14 which leads from Harrington to Milford, about 1/2 mile more or less from Route 13, Harrington, Kent County, State of Delaware, on MONDAY, NOVEMBER 3, 1975 at 2:00 P.M. Daylight Saving Time ALL those 2 certain pieces, parcels or tracts of land situated in Millspion Hundred, Kent County, State of Delaware, lying on the south side of Delaware Route 14 which leads from Harrington to Milford and being described as follows, to wit: PARCELS #1: lying on the south side of Delaware Route 14, being bounded on the north by said Delaware Route 14, on the east by lands now or late of William T. Harvey, on the south by the Run of Browns Branch and on the west by reserved lands of the grantors herein and being more particularly described as follows, to wit: BEGINNING at a pipe set in the south right of way line of Delaware Route 14 at a corner for this parcel and for lands now or late of Harvey; thence running with lands now or late of Harvey south 77 degrees 48 minutes 25 seconds west, 1,398.54 feet to a corner for this parcel and for lands now or late of Harvey in the Run of Browns Branch; thence running with the center of the Run of Browns Branch and following the various wanderings and meanderings thereof in a westerly direction 1,700 feet more or less to a point in the run of said branch at a corner for this parcel and for reserved lands of the grantors, two closing courses along Browns Branch as follows: (1) south 82 degrees 52 minutes 13 seconds west, 588.64 feet; thence (2) north 58 degrees 39 minutes 46 seconds west, 1,060.98 feet; thence running with reserved lands of the grantors on the following four courses: (1) in part with an existing fence north 20 degrees 45 minutes 26 seconds east 843.89 feet to a corner post; thence (2) with a fence north 24 degrees 46 minutes 5 seconds west 34.33 feet to a corner post; thence (3) with a fence north 68 degrees 18 minutes 53 seconds west, 162.18 feet; thence (4) running parallel with 50 feet east of parcel #2 herein and lands of Arthur Muntz north 15 degrees 30 minutes east 450.38 feet to a corner for this parcel and for reserved lands of the grantors and the balance on the north by the South right of way line of Delaware Route 14; thence running with said right of way line south 74 degrees 30 minutes east 1,724.79 feet to the place of beginning and containing 54.70 acres of land, be the same more or less. PARCELS #2 LYING ON THE SOUTH SIDE OF Delaware Route 14, being bounded on the north by Delaware Route 14, by lands of Andrews, by lands of Coleman and by lands of Arthur Muntz, lands of Hitchens, lands of Patman, lands of Breeding and by lands of Ken Meredith, on the east and south by reserved lands of the grantors herein and on the west by lands now or late of Camper and being more particularly described as follows, to wit: BEGINNING at a pipe set in the south right of way line of Delaware Route 14, at a corner for this parcel and for lands of Ken Meredith; thence running with said right of way line south 74 degrees 30 minutes east 177 feet to a pipe set in said right of way line at a corner for this parcel and for lands of Andrews; thence running with lands of Andrews south 15 degrees 30 minutes west 200 feet to a pipe set at a corner for this parcel and for lands of Andrews; thence running with lands of Andrews, lands of Coleman and lands of Muntz south 74 degrees 30 minutes east 350 feet to a pipe set at a corner for this parcel and for lands of Muntz in line of reserved lands of the grantors herein; thence running with reserved lands of the grantors herein on the following eight courses: (1) south 15 degrees 30 minutes west, 109.05 feet; thence (2) north 68 degrees 18 minutes 53 seconds west, 187.31 feet to a corner post; thence (3) with a fence north 72 degrees 21 minutes 39 seconds west, 93.69 feet to a corner post; thence (4) with a fence south 86 degrees 24 minutes 48 seconds west, 109.05 feet to a corner post; thence (5) with a fence north 70 degrees 44 minutes 38 seconds west, 509.92 feet to a post; thence (6) with a fence south 49 degrees 15 minutes 12 seconds west 91.21 feet to a post; thence (7) north 58 degrees 13 minutes west, 13.80 feet to a point in a small ditch; thence (8) with said ditch south 33 degrees 51 minutes west 259.58 feet to a point in the center of the Run of Browns Branch at a corner for this parcel and for reserved lands of the grantors; thence running with the center of Browns Branch on the following six courses: (1) north 36 degrees 59 minutes 4 seconds west, 53.14 feet; thence (2) north 48 degrees 48 minutes 49 seconds west, 50.49 feet; thence (3) north 59 degrees 4 minutes 26 seconds west, 50.04 feet; thence (4) north 66 degrees 59 minutes 14 seconds west 50.80 feet; thence (5) north 64 degrees 45 minutes 11 seconds west, 50.49 feet; thence (6) north 32 degrees 43 minutes 1 second west 41.51 feet to a point in the center of said branch at a corner for this parcel and for lands now or late of Camper north 24 degrees 4 minutes 45 seconds east 234.87 feet to a pipe set in line of lands now or late of Camper at a corner for this parcel and for lands of Hitchens; thence running with lands of Hitchens and with lands of Breeding south 73 degrees 7 minutes 42 seconds east, 363.15 feet to a pipe set at a corner for this parcel, for lands of Breeding and for lands of Meredith; thence running with lands of Meredith on the four following courses: (1) with a small ditch north 65 degrees 51 minutes 34 seconds east, 87.31 feet; thence (2) with a small ditch north 43 degrees 24 minutes 21 seconds east, 80.75 feet; thence (3) in part with a small ditch north 57 degrees 51 minutes 31 seconds east, 111.27 feet to a pipe; thence (4) north 15 degrees 30 minutes east, 141 feet to the place of beginning 7.36 acres of land, be the same more or less. THE TOTAL area of parcels #1 and #2 herein is 62.08 acres of land, be the same more or less. BEING the same lands and premises conveyed unto Myer Feinstein Co., a corporation of the State of Pennsylvania, by deed of Carlisle Land, Inc., a corporation of the State of Delaware, of record in the Kent County Recorder of Deeds Office at Dover, Record O, Volume 28, Page 77. EXCEPTING, THEREFROM, HOWEVER, the following described parcel of land: ALL that certain piece, parcel or tract of land situated in the City of Harrington, Kent County, State of Delaware, lying on the south side of Delaware Route 14 which leads from Harrington to Milford, being bounded on the north by Delaware Route 14, on the east by lands now or late of William T. Harvey, on the south by other lands of the grantors herein and being more particularly described as follows, to wit: BEGINNING at a point in the south line of Delaware Route 14 at a corner for this parcel and for lands now or late of William T. Harvey; thence running with lands now or late of Harvey south 17 degrees 44 minutes 25 seconds west, 1,398.54 feet to a point in the run of Browns Branch; thence running with the run of Browns Branch in a westerly direction 550 feet more or less to a corner for this parcel and for other lands of the grantors; thence running with other lands of the grantors north 15 degrees 30 minutes east 1,604 feet or less to a corner for this parcel and for other lands of the grantors in the south line of Delaware Route 14; thence running with the south line of Delaware Route 14 south 74 degrees 30 minutes east 550 feet to the place of beginning and containing 18.00 acres of land, be the same more or less. PARCELS #3: All that certain lot, piece and parcel of land situated in Milford, Kent County and State of Delaware, known and designated as Lot No. 3, located on the North side of Front Street on plot of lands at Silver Hill, a subdivision of the West side of Milford, said plot recorded at Dover, Delaware, Deed Book E, Vol. 13 at page 141. PARCELS #4: All that certain lot, piece and parcel of land situated in Milford, Kent County and State of Delaware, known and designated as Lot No. 4, located on the North side of Front Street on plot of lands at Silver Hill, a subdivision of the West side of Milford, said plot recorded at Dover, Delaware, Deed Book E, Vol. 13 at page 141. PARCELS #5: All that certain lot, piece and parcel of land situated in Milford, Kent County and State of Delaware, known and designated as Lot No. 5, located on the North side of Front Street on plot of lands at Silver Hill, a subdivision of the West side of Milford, said plot recorded at Dover, Delaware, Deed Book E, Vol. 13 at page 141. PARCELS #6: All that certain lot, piece and parcel of land situated in Milford, Kent County and State of Delaware, known and designated as Lot No. 6, being the same lands and premises conveyed unto James J. Taylor, his wife, by deed of Myer Feinstein Co., Inc., bearing the date September 2, 1975, and of record in the Office of the Recorder of Deeds in and for Kent County, State of Delaware, in Deed Book E, Vol. 25 at page 406. PARCELS #7, 8, 9, 10, 11, 12, 13, 14, 15, 16, 17, 18, 19, 20, 21, 22, 23, 24, 25, 26, 27, 28, 29, 30, 31, 32, 33, 34, 35, 36, 37, 38, 39, 40, 41, 42, 43, 44, 45, 46, 47, 48, 49, 50, 51, 52, 53, 54, 55, 56, 57, 58, 59, 60, 61, 62, 63, 64, 65, 66, 67, 68, 69, 70, 71, 72, 73, 74, 75, 76, 77, 78, 79, 80, 81, 82, 83, 84, 85, 86, 87, 88, 89, 90, 91, 92, 93, 94, 95, 96, 97, 98, 99, 100, 101, 102, 103, 104, 105, 106, 107, 108, 109, 110, 111, 112, 113, 114, 115, 116, 117, 118, 119, 120, 121, 122, 123, 124, 125, 126, 127, 128, 129, 130, 131, 132, 133, 134, 135, 136, 137, 138, 139, 140, 141, 142, 143, 144, 145, 146, 147, 148, 149, 150, 151, 152, 153, 154, 155, 156, 157, 158, 159, 160, 161, 162, 163, 164, 165, 166, 167, 168, 169, 170, 171, 172, 173, 174, 175, 176, 177, 178, 179, 180, 181, 182, 183, 184, 185, 186, 187, 188, 189, 190, 191, 192, 193, 194, 195, 196, 197, 198, 199, 200, 201, 202, 203, 204, 205, 206, 207, 208, 209, 210, 211, 212, 213, 214, 215, 216, 217, 218, 219, 220, 221, 222, 223, 224, 225, 226, 227, 228, 229, 230, 231, 232, 233, 234, 235, 236, 237, 238, 239, 240, 241, 242, 243, 244, 245, 246, 247, 248, 249, 250, 251, 252, 253, 254, 255, 256, 257, 258, 259, 260, 261, 262, 263, 264, 265, 266, 267, 268, 269, 270, 271, 272, 273, 274, 275, 276, 277, 278, 279, 280, 281, 282, 283, 284, 285, 286, 287, 288, 289, 290, 291, 292, 293, 294, 295, 296, 297, 298, 299, 300, 301, 302, 303, 304, 305, 306, 307, 308, 309, 310, 311, 312, 313, 314, 315, 316, 317, 318, 319, 320, 321, 322, 323, 324, 325, 326, 327, 328, 329, 330, 331, 332, 333, 334, 335, 336, 337, 338, 339, 340, 341, 342, 343, 344, 345, 346, 347, 348, 349, 350, 351, 352, 353, 354, 355, 356, 357, 358, 359, 360, 361, 362, 363, 364, 365, 366, 367, 368, 369, 370, 371, 372, 373, 374, 375, 376, 377, 378, 379, 380, 381, 382, 383, 384, 385, 386, 387, 388, 389, 390, 391, 392, 393, 394, 395, 396, 397, 398, 399, 400, 401, 402, 403, 404, 405, 406, 407, 408, 409, 410, 411, 412, 413, 414, 415, 416, 417, 418, 419, 420, 421, 422, 423, 424, 425, 426, 427, 428, 429, 430, 431, 432, 433, 434, 435, 436, 437, 438, 439, 440, 441, 442, 443, 444, 445, 446, 447, 448, 449, 450, 451, 452, 453, 454, 455, 456, 457, 458, 459, 460, 461, 462, 463, 464, 465, 466, 467, 468, 469, 470, 471, 472, 473, 474, 475, 476, 477, 478, 479, 480, 481, 482, 483, 484, 485, 486, 487, 488, 489, 490, 491, 492, 493, 494, 495, 496, 497, 498, 499, 500, 501, 502, 503, 504, 505, 506, 507, 508, 509, 510, 511, 512, 513, 514, 515, 516, 517, 518, 519, 520, 521, 522, 523, 524, 525, 526, 527, 528, 529, 530, 531, 532, 533, 534, 535, 536, 537, 538, 539, 540, 541, 542, 543, 544, 545, 546, 547, 548, 549, 550, 551, 552, 553, 554, 555, 556, 557, 558, 559, 560, 561, 562, 563, 564, 565, 566, 567, 568, 569, 570, 571, 572, 573, 574, 575, 576, 577, 578, 579, 580, 581, 582, 583, 584, 585, 586, 587, 588, 589, 590, 591, 592, 593, 594, 595, 596, 597, 598, 599, 600, 601, 602, 603, 604, 605, 606, 607, 608, 609, 610, 611, 612, 613, 614, 615, 616, 617, 618, 619, 620, 621, 622, 623, 624, 625, 626, 627, 628, 629, 630, 631, 632, 633, 634, 635, 636, 637, 638, 639, 640, 641, 642, 643, 644, 645, 646, 647, 648, 649, 650, 651, 652, 653, 654, 655, 656, 657, 658, 659, 660, 661, 662, 663, 664, 665, 666, 667, 668, 669, 670, 671, 672, 673, 674, 675, 676, 677, 678, 679, 680, 681, 682, 683, 684, 685, 686, 687, 688, 689, 690, 691, 692, 693, 694, 695, 696, 697, 698, 699, 700, 701, 702, 703, 704, 705, 706, 707, 708, 709, 710, 711, 712, 713, 714, 715, 716, 717, 718, 719, 720, 721, 722, 723, 724, 725, 726, 727, 728, 729, 730, 731, 732, 733, 734, 735, 736, 737, 738, 739, 740, 741, 742, 743, 744, 745, 746, 747, 748, 749, 750, 751, 752, 753, 754, 755, 756, 757, 758, 759, 760, 761, 762, 763, 764, 765, 766, 767, 768, 769, 770, 771, 772, 773, 774, 775, 776, 777, 778, 779, 780, 781, 782, 783, 784, 785, 786, 787, 788, 789, 790, 791, 792, 793, 794, 795, 796, 797, 798, 799, 800, 801, 802, 803, 804, 805, 806, 807, 808, 809, 810, 811, 812, 813, 814, 815, 816, 817, 818, 819, 820, 821, 822, 823, 824, 825, 826, 827, 828, 829, 830, 831, 832, 833, 834, 835, 836, 837, 838, 839, 840, 841, 842, 843, 844, 845, 846, 847, 848, 849, 850, 851, 852, 853, 854, 855, 856, 857, 858, 859, 860, 861, 862, 863, 864, 865, 866, 867, 868, 869, 870, 871, 872, 873, 874, 875, 876, 877, 878, 879, 880, 881, 882, 883, 884, 885, 886, 887, 888, 889, 890, 891, 892, 893, 894, 895, 896, 897, 898, 899, 900, 901, 902, 903, 904, 905, 906, 907, 908, 909, 910, 911, 912, 913, 914, 915, 916, 917, 918, 919, 920, 921, 922, 923, 924, 925, 926, 927, 928, 929, 930, 931, 932, 933, 934, 935, 936, 937, 938, 939, 940, 941, 942, 943, 944, 945, 946, 947, 948, 949, 950, 951, 952, 953, 954, 955, 956, 957, 958, 959, 960, 961, 962, 963, 964, 965, 966, 967, 968, 969, 970, 971, 972, 973, 974, 975, 976, 977, 978, 979, 980, 981, 982, 983, 984, 985, 986, 987, 988, 989, 990, 991, 992, 993, 994, 995, 996, 997, 998, 999, 1000.

## PUBLIC NOTICES

more or less. The total area of parcels #1 and #2 herein is 62.08 acres of land, be the same more or less. BEING the same lands and premises conveyed unto Myer Feinstein Co., a corporation of the State of Pennsylvania, by deed of Carlisle Land, Inc., a corporation of the State of Delaware, of record in the Kent County Recorder of Deeds Office at Dover, Record O, Volume 28, Page 77. EXCEPTING, THEREFROM, HOWEVER, the following described parcel

# Around Town

By Loretta Hitchens

Mr. James Hall of Dover was the Sunday guest of Elder Randolph Brown.

Miss Wanda Garrison, Joyce Garrison, Victor Garrison and Freddie Walker call on Rev. Loretta Hitchens Friday evening, October 23.

Miss Violet Anderson was the overnight guest of her cousin Mrs. Beatrice Anderson Saturday night, Oct. 24, in Harrington.

Loretta Hitchens visited her uncle, Jehu Dale, and aunt, Mrs. Elmira Houston, in Millsboro Saturday, October 24.

Mrs. Sadie Mills of Frankford, visited friends in Harrington this past week.

Mr. Norman George, John

Brewington and Mr. Harold Brewington were early Sunday callers of the Brown family, the three live in Houston.

Mr. Eddie Cohen of Wilmington, visited friends in Harrington this weekend.

Loretta Hitchens and Mrs. Paula Anderson attended the birthday party for Mrs. Helen Rakes in Dover on Friday evening, October 23.

Mrs. Hilda Purnell visited Gregory and Ann Benson on Sunday, Oct. 25.

Mrs. Louise and Loraine Hitchens motored to Whalesville, Md. on Friday, Oct. 23, to visit their aunt, Mrs. Della Showell who is ill.

sisting of the following towns: Bridgeville, Greenwood, Milford, Harrington, Frederica, Lincoln, Houston.

Troop 684,332 meets at 222 Commerce St., on Mondays from 3:15 to 4:15. The eight girls in the Troop are: Carol Lynn Hawkins, Anna Levers, Lisa Ann McColley, Folsie Mae Polk, Linda Marie Poore, Kimberly Porter, Amy Way, Michele Zdradzinski, Mrs. Linda Hawkins, Leader, Mrs. Pat Zdradzinski, Mrs. Carol Ann McColley, Treasurer. Two mothers have offered to be at each meeting to help out: Mrs. Bertha Polk and Mrs. Pat Levers.

Second meeting took place on Monday, October 27. The girls learned their Brownie Hand signs, and what the Brownie b's are: Be-Discoverer, Be-Ready Helpers, Be-Friend Makers.

A Halloween project, pumpkins drawn on orange construction paper, was completed. The girls cut and designed faces on them. They were then put up on the meeting room wall for the Halloween Party on Wednesday from 6 to 7:30 p.m.

If interested in starting a Troop of your own call Mrs. Hawkins at 398-4121 before 5 Monday-Friday.



Mrs. Virginia Smith of Harrington displays her old Harrington Journal that won her a new subscription to the paper for having the oldest copy in use as a drawer or trunk liner. The edition was from Friday, October 2, 1942. The majority of the news items were related to World War II.

# Cub Scout News

On October 24, Pack 76 held its annual Halloween party. The party started off with the costume parades. Non-cubbers had their parade first and then the cubbers.

As soon as the parades were over, the awards were given out. The following awards were received:

Den 1 - Brian Baker, Denner; David Reardon, Assistant Denner  
Den 2 - Scott Dill, Denner; Gary Greer, Bobcat; Richard Seki, Bobcat; Jeff Minson, Bobcat  
Den 3 - Stacy Rothermel, Bobcat; Mike McColley, Bobcat; Mike Wingo, Bobcat; Mike Lamphier, Bobcat; Steve Wroten, Wolf; Albert Silbereisen, Bear; John Donato, Summertime Award.

Boy Scout Sam Lamphier received his Den Chief Card for being Den 2 Den Chief. The presentation was made by Mrs. Susie Silbereisen, Den Mother of Den 2.

Webelos - Joe Watkinson-Citizen, Athelete, Sportsman Richie Sapp, Forrester Tommy Lord - Showman, Sportsman Scott McKenzie-Campout Patch Joey Wyatt-Arrow of Light (highest award in cub scouting).

Registration cards were handed out to new cubbers and leaders.

Next came the awards for costumes. Non-cubs were awarded their prizes first. Funniest - Lisa Wamsley; Scariest - Derrick Dill; Most Original - Randy Wroten

# Brownie News

Troop number 684 had their Halloween Party Sunday, October 26, at their leader's house. The girls went through a spook house, bobbed for apples, had a pony ride, and played games. Dana Adams, Beth Reed, Dawn Russum, April Testerman, Jodi Wilson, Linda Hawkins, Cheryl Werner, Karen Taylor, Melissa Weaver, Dawn Tribbett, and Heidi Wilson attended the party.

Cub Souts: Funniest - Jerry Wyatt; Ugliest - Tom Lord; Most Original - Stacy Rothermel and Steven Wroten; Prettiest - Richie Sapp.

Each boy drew a picture for the picture contest. The picture had to have a Halloween theme. There was a first place awarded to each den. Den 1-Bill Bader; Den 2-Jeff Minson; Den 3-Stacy Rothermel. Webelos-Scott McKenzie.

The following received their patches for participating in Fun Day Activities on October 4. Mr. and Mrs. Francis Dill, Mr. and Mrs. Albert Silbereisen, Sr., Mrs. Sue Minson, Mrs. Carol Lamphier, Mrs. Pat Lord, Ray Blanchette, Warren Bader, Stacy Rothermel, David Gagne, Richie Sapp, Kevin Willink, Tom Lord, Mike Lamphier, Pat Miller, Albert Silbereisen, Jr., Scott Dill, Jeff Minson, Dennis Dean, and John Donato.

The evening ended with the boys bobbing for apples and refreshments for all.

On October 25 and 26, Mid-Del District, held a father-son campout at Killen's Pond State Park. There were only five of twelve packs in the district participating because of the weather. Registration was moved up to noon because the weather had delayed the previous starting time of 8 a.m. Pack 76 had the following boys and families participating: Warren Bader, webelos leader, Scott Bader, Bill Bader, Mrs. Susie Silbereisen, Den Mother; Albert Silbereisen, Jr., Linda Silbereisen, Joey Wyatt, David Wilson, Mike Jones, Cliff

on Wyatt, Jeff Muelhisen, Tom Muelhisen, Pat Lord, Tom Mother; Tom Lord, Pat Miller, James Goldsmith, Sr., James Goldsmith, Jr., Scott McKenzie, Richard McKenzie, Kevin Willink, Carol Lamphier, Assistant Webelos Leader; Sam Lamphier, Mike Lamphier, Vincent Lamphier, Richie Sapp, Don Dell, Assistant Cub Master; and Darin Dell.

This is the first campout where mothers have stayed all night. A good time was had by all. Some of the events the boys had during the day were rope tying, baking cookies in a dutch oven, a maze game, building fires, and songs and skits for the evening camp fires. Good time was enjoyed by all.

WHEN YOU LOOK INTO WATERFORD, you discover that it is an investment in timelessness, growing more valuable with the passing years. Each piece is a signed original.

"Gifts for all occasions"

At  
**FORNEY'S**  
106 Lockerman St.  
DOWNTOWN  
DOVER

# Brownie-Pixie News

First meeting of Troop 684, 332 took place on Monday, October 20. Mothers attended the meeting with their daughters. The functions and limitations of a "Brownie-Pixie" Troop was discussed. This troop has two troop numbers; the reason for this is, four girls

are registered with Troop 684, Janet Russum, and four girls are registered with Troop 332, Barbara Brown. The Pixie Troop will interact with these two troops all school year.

A Brownie-Pixie Troop consists of six-year-old first graders. This Troop is the first one in Unit II, con-

## THE THANKSGIVING ARTS & CRAFTS SHOW

Decoy Carvings · Demonstrations · Paintings · Arts & Crafts

**NOVEMBER 29th & 30th**

W.T. Chipman Junior High School Field House  
Harrington, Delaware

Donation: Adults \$1.00 Children 12 Years and Older 50¢  
Under 12 Years With Parents Free

Saturday: 11:00 A.M. to 9:00 P.M.  
Sunday: 12:00 Noon to 6:00 P.M.

SPONSORED BY  
**THE HARRINGTON JOURNAL NEWSPAPER**  
For The Benefit Of The Harrington Rotary Club and Other Non-Profit Organizations (To Be Named)

## BERRY FUNERAL HOMES

PHONE

MILFORD 422-8091      FELTON 284-1518

## Grand Opening of DOT'S CARD AND GIFT SHOP

at the Milford Plaza Shopping Center

DRAWINGS FOR GIFT CERTIFICATES

**Thurs. Nov. 6 - 9:30 a.m.**

Whatsoever a man soweth, that shall he also reap.

**1970 SAFEWAY**  
12x64 Mobile Home  
**\$3,500**  
Phone 398-8181

## Visit The Blue Barn

Antiques & Foliage Plants

Over 200 Plants in Antique & Unique Containers

4 miles West of Felton on Rt. 12

Thurs. & Fri. 10-3      Donna Rae & Martha Hughes  
Sat. 10-4 Sun. 12-4

# variety quality savings service that's us!

### APPLIANCES

**DEL-MOR TV APPLIANCES**

WE SELL: audio components, major appliances, Admiral color & bw tv, Sylvania color & bw tv towers, CB sets, air conditioners, antenna systems.

WE SERVICE: all make tv sets, all type of antenna systems.

**MILFORD - HARRINGTON RD. RD.**  
Phone 422-8534/6619

### BANKING

Complete BANKING FACILITIES at the FRIENDLY BANK

**PEOPLE'S BANK**  
Commerce St. Harrington  
398-3256

### CLOTHING

**WOLLASTON'S**  
CASUAL CLOTHES

SEAFORD 692-7268      HARRINGTON 398-3764

### FOOD and INSURANCE

**Hi-Grade Dairy**  
AM Dairy Products At Our Store or at Your Door

Homemade Ice Cream, Pizzas, Submarines and other Sandwiches

Phone 398-8321  
97 Clark St. Harrington

**OUTTEN'S Insurance Service**  
Commerce St. Harrington 398-3276

**NATIONWIDE CONSUMER SERVICES, INC.**  
"Complete Consumer Planning"

Associated with **NATIONWIDE MUTUAL INSURANCE COMPANY**  
The man from Nationwide is on your side.  
Home Office: Columbus, Ohio

### REAL ESTATE

**FARROW REALTY**

313 S. State Street, Dover, DE.  
734-5758 Anytime

### STORES

**ARGO LINOLEUM CO.**  
Armstrong • Congoleum  
Barwick Carpets      GAF • Mannington      Do it yourself - Or we install.  
Floor Coverings

121 N. Washington St. 422-8431 Milford, Del. 19963

### Steele's Music House

U.S. Route 13  
Guitars, Amps, Banjos  
Mandolins, Steel & Bass Guitars  
New - Used  
Book-Strings-Straps-Picks

**We Feature Country - Music**

284-9849      Felton, Del.

### L & D ELECTRONICS

Quillen Shopping Center  
Harrington, Delaware

WE SELL:  
• Zenith TV  
• Color & BW Zenith Components Systems  
• Zenith Stereo  
• Magnavox Color & BW TV  
• Magnavox Stereo  
• Spalding Towers  
• Craig Tape Players & FM Radios  
• Wineguard Antennas - egeras T. retlaW

**We Service All Makes of TV Sets**

### AUTO PARTS

**Discount Auto Parts**  
Quillen Shopping Center

Monday through Friday 8-5:30      Saturday 8-4

### EQUIPMENT

**TAYLOR & MESSICK, INC.**

JOHN DEERE FARM EQUIPMENT  
LAWN and GARDEN EQUIPMENT  
SALES AND SERVICE  
BY TWO-WAY RADIO

Phone 398-3729      Harrington, Del.

CALL 398-3206 FOR SPACE IN DIRECTORY

**Milford Bowling Lanes, Inc.**  
Leagues & Open Bowlers Welcome  
U.S. 113      Milford

**Buck & Bob's 24 Hour Towing**  
Anywhere      Anytime  
Day 398-8980      Night 398-3198  
Subsidiary of Buck's Auto Repair

**Call The Journal At 398-3206**  
**For Listing In The Business Directory**

## Keep the home fires burning.

with the Texaco Fuel Chief Oil Burner.

This oil burner is the one to keep your whole family warm and comfortable all winter long. Perfect for the average sized home - with hot water or steam heat systems.

It has Texaco's Flame Retention feature, and gives you the most heat from each gallon of oil.

Give us a call for a free inspection of your home heating needs. No obligation.

**TEXACO Fuel Chief**  
OIL HEATING EQUIPMENT

**PENINSULA oil co.**

629-9136      398-8344  
SEAFORD      HARRINGTON

422-5566      732-6762  
MILFORD      DAGSBORO



A Hymn Sing at Epworth United Methodist Church of the Greenwood Charge on November 2, at 7:30 p.m. will feature The Welch Family Singers of Delmar, and other singers. The Hymn Sing is being held in observance of "A Great Day of United Methodist Singing." Mr. Leonard Chaffinch, the church Lay Leader, who will be in charge of the program, invites the public to attend.

## Farmington

by Mildred Gray

Mr. and Mrs. Allen Arthur have returned from a two-week vacation in Florida. They visited their son Jim and his family in Tampa and their son Joe and his family in Ft. Walton Beach. They toured St. Augustine, Marineland and Disney World. And visited with friends in Warner Robins, Georgia and Columbia S. C.

Mrs. Mary Hatfield is in Milford Memorial Hospital for treatment. We hope to see her home soon. Mr. Lewis Slater and family, Mr. and Mrs. Edward Robson, and Mr. and Mrs. William Messick spent last week attending the quarter horse congress at Columbus, Ohio.

Lenna Rust spent the week with her mother, Mrs. Shirley Rust. Mrs. Harry Setders and Bonnie Smith visited her daughter, Mr. and Mrs. William McFadden in Smyrna Saturday.

**1967 SKYLINE**  
12x48 Mobile Home  
**\$3,300**  
Phone 398-8181

## Houston

by Mrs. Margaret Thistlewood

An Adult Fellowship dinner will be held Saturday evening at 6:30 November 1st in the Fellowship Hall. Halloween parade will be held October 30th starting at 6:30. After the parade,

## Mrs. Reed Joins Marvel Agency

Harvey Marvel Jr. of the Marvel Agency of Milford announced last week that Mrs. Anna Mae Reed has joined the staff of the agency. Mrs. Reed will work in

refreshments will be served at the Houston Church.

Sympathy is extended to the family of Richard A. Simpson, age 36, who passed away October 23 at Memorial Hospital in Wilmington. He is the son of Frances and Ella Simpson. He is survived by his wife Joyce and two sons, David and Danny Simpson.

Mr. and Mrs. Wayne Eisenbrey and Mr. and Mrs. William Eisenbrey Sr. of Milford spent last Sunday at West Chester State College in West Chester, Pa., visiting William Eisenbrey Jr. who is a student there.

Mrs. Ester Pride and son, Raymond Jr. were entertained at supper at the home of Mr. and Mrs. John W. Hammond in Williamsville on Tuesday evening.

Curtis Walls of the U.S. Marines of Cherry Point, N.C. spent the weekend with his mother, Mrs. Betty Pleasantson.

Dinner guests on Sunday of Mr. and Mrs. Harry W. Towers were Mrs. Henry Cabo and son Bruce, and Dita and Pam Nichols, all of Wilmington.

Mrs. Hazel Anglin of Kingsville, Md. and Mrs. Anna Sharp of Wilmington spent several days last week with George and Margaret Thistlewood.

the capacity of an insurance customer service representative. She formerly worked for seven years in another local insurance agency. She and her husband George, reside near Houston.

## It Seems To Me

by Janet Reed

Why not enter your sewing project in a sewing contest? The "Make It With Wool" contest is coming up soon. Plan to make a wool garment and enter the contest.

The purpose of the wool contest is to promote the use of wool and it is sponsored by wool interests, so naturally you must use wool. But if you haven't sewn with wool lately, you can rediscover the pleasure of sewing and wearing wool.

Good quality wool fabric is the original wrinkle-resistant material. It resists wrinkling as you wear it and wrinkles hang out easily. It does require steam and pressure to press the fabric well as you sew. Pressing is as important as sewing if you are to achieve a professional appearance in wool.

Today, some wool fabric can be washed too. If you object to dry cleaning costs, look for wool fabric that can be laundered. Follow the care directions because these differ with different fabrics.

Some people find wool irritating to the skin. If this is the case, use a lightweight lining on the underside of the garment. A lining can add body to a soft fabric and may support the lines of some styles.

Wool wears well and your wool fabric can be reused when you no longer are wearing the garment. But since wool looks good for the life of the fabric, you may find yourself wearing your wool garment longer than

other items in your wardrobe.

All entries in the wool contest must be made from loomed, knitted or felted fabric or yarn of 100 percent wool or a minimum of 70 percent wool and no more than 30 percent of a man-made fiber. The fabric may contain any amount of mohair, cashmere, camel, alpaca or other specialty fibers designated by the Wool Products Labeling Act. Bonded fabrics may be used if the face fabric is at least 70 percent wool. To comply with contest rules, insist on seeing the label before you buy and jot down the name of the manufacturer and other pertinent information.

Fabric swatches of state winners are tested to determine qualification for the national competition.

Deadline for entries in the contest is November 22. Juniors (ages 14-16), seniors (ages 17-21) and adults (over 21) may enter coats, dresses or two-piece suits. Pre-teens (ages 10-13) may enter jumpers, skirts, pants, vests, dresses.

Hand-knit or crocheted garments of wool yarn are acceptable if the garment can be entered in a specified category. To be eligible for competition, garments must have been completed after January 1 of this year.

Entry blanks and further information may be obtained from the state contest director, Mrs. Burton Ebling, Route 2, Townsend, Delaware 19734. The state contest will be held December 13 at Agricultural Hall, University of Delaware, Newark.

## Obituaries

Jeanne R. Kershaw

Jeanne R. Kershaw, 54, of Rodney Village, Dover, died Saturday at Kent General Hospital after a short illness.

Surviving are Mrs. Kershaw's husband, John R.; her father, Harry McKinney of Felton; two sons, John R. Jr. of Tampa, Fla., and Jeffrey W. of Dover; a daughter, Miss Elizabeth Ruth Kershaw of Dover; and a sister Ruth Kagling of Van Nuys, Calif.

Service were held at 10 Wednesday morning at the Torbert Funeral Chapel, Bradford and Reed Sts., Dover. There was no viewing. Interment was in Sharon Hills Memorial Park, Dover.

## Leonard-Robinson Vows Said

Marriage vows were exchanged by Ann Leonard of Harrington and Donald Robinson of Greenwood at 4 p.m. on Saturday, October 25 at Asbury United Methodist Church.

Members of the immediate families and Mary Ellen Reynolds and Phillip Price attended the wedding and the reception that followed at the home of Mrs. Grace Howard, the bride's mother.

## Greenwood PTA Meets

In an effort to stimulate stronger feelings for the Greenwood PTA (Woodbridge Junior High School), this year's president Mrs. Veronica Cannon invited two interesting speakers at last Thursday's meeting in the band room of the Greenwood School. The guest speakers were Mrs. Diane Munson, an elementary guidance counselor in her first year in the Woodbridge School District, and Miss Susan Hopp, the speech and hearing therapist, who is also in her first year in the school district. They spoke to an audience of about 30 parents.

Mrs. Munson, who holds a master's degree in counseling from Penn State, briefly defined her role as a counselor. She pointed out that the school district does not pay her salary, which is derived from the Title I program. She also stated that the children she deals with are normal children under normal times. The biggest problem as she sees it is the one classified as behavioral. "Research has

shown that those children who like themselves do better in school," stated Mrs. Munson. A counselor counsel children in small groups or individually depending on the situation. The developmental counseling program is for all children in all classes.

The other speaker for the evening was Miss Susan Hopp, who graduated from Madison College in Harrisonburg, Virginia. She is a native of Spring Valley, New York and is in her first year of service at Woodbridge Junior High School. She stated that at the beginning of each school year she goes through a screening program to determine those who suffer articulation difficulties. She pointed out loss of hearing may be the result of certain ailments. Severe cases require further referral.

Mrs. Cannon is attempting to make the Greenwood PTA very active once again. She has called upon all parents associated with the school to attend next month's meeting.

## Church News

A spiritual life crusade will be conducted in Calvary Wesleyan Church, Harrington, starting Tuesday, Nov. 4, and continuing through Sunday, Nov. 9.

The Rev. and Mrs. Bob Wallace will present the special music in each service. Rev. Wallace, an ordained elder in the Wesleyan Church will bring the message each evening at 7:30.

Rev. Wallace has traveled in more than 40 countries and on most major continents of the world.

On occasion he shares slides of these travels, correlating Bible prophecy with his numerous trips to Africa, India and Israel.

The Rev. William H. Miller, is pastor and extends to all in the Harrington area a cordial invitation to participate in these services.

**B & B**  
**Educational**  
**Music Service**

Organ Sales



Free Delivery  
Master Charge  
WSFS 2% Discount  
Service What We Sell  
Organ Technician



School Band  
Supplies  
& Accessories

Sales Representative  
Visits School  
Available on Request

"Over 20 years of Serving The Area Musically"

205 S. Dual Hwy. **697-1885** Camden, Del. 19934



#1 of a Series

# The onshore impact of offshore oil.

## Is the East Coast in for an Oil Boom?

Amoco representatives are traveling extensively to find out what the public in this area wants to know about offshore oil and natural gas exploration on the Atlantic Outer Continental Shelf.

We are talking to private citizens, state and local legislators, civic groups, sportsmen's and conservation groups and planning commissions. This is our first report on the important physical, ecological and economic subjects raised in these discussions.

It appears the major concern of East Coast residents is not with oil platforms fifty to one hundred miles offshore, well out of sight of land. Most people are confident that we have the technology to safely carry on an oil and natural gas exploration and production program.

There is a great concern, however, about the onshore impact of a major new industry upon the coastal communities. Many envision excessive onshore support installations and the influx of hundreds of workers which would put a strain on local facilities and services.

The fact is, even if major oil and natural gas reserves are discovered on the Outer Continental Shelf early in the exploration phase, seven to ten years would be required to bring a field into significant production. This will provide the time period necessary for the planned and gradual development of facilities and work forces in the coastal communities. There will be no sudden oil boom.

Exploratory drilling will be carried out by small, specialized crews. Later, if significant oil or gas deposits are found, the production phase should provide increased economic benefits primarily through increased income and payrolls of local suppliers to the industry. In many cases, existing terminals, storage tank farms and refineries will accommodate anticipated production.

Early exploration of the Outer Continental Shelf would establish whether there is oil and gas there. If there is, production could provide a domestic energy supply for Atlantic Coast communities and should benefit many sectors of the East Coast economy.

Watch for further reports probing the questions of onshore supply bases, pipeline landings, use of existing refineries and other issues raised by our readers.

For further information, write: Public Affairs Department, Amoco, 300 East Joppa Road, Towson, Md. 21204.

Our job is you.™



This Section is Through Courtesy of:

Compliments of

**Food Rite**  
**Quillen's Shopping Center**  
**Harrington**

Compliments of

**Quillen's**  
**Dairy Market**  
**Dorman St. Harrington**

# Town And Country

Dave Woodward  
KENT COUNTY AGENT

The Kent Conservation District Board of Supervisors announced this week that nominations may be made for a supervisor to serve on the District Board. The term will start January 1, 1976, and continue for a four-year period. The election will be held in December. The date and time will be announced later.

Any interested landowner who desires to be a candidate for election to the Board may be nominated by ten or more farmers or landowners of the County.

Three requirements that a candidate must meet are as follows:

1. Be a Kent County farmer resident.

2. Receive the written endorsement of ten other landowners or farm operators in the county and present this endorsement to the Kent Conservation District Office, 2319 South Dual Highway, Dover, by November 26, 1975.

3. Reside in the northeast quadrant of Kent County, that area of the county east of U.S. Rt. 13, north side of Route 10 across to Rising Sun, on County Road 29. From Rising Sun to Lebanon on north side of County Road 26. The remaining southern boundary follows the St. Jones River to the Delaware Bay.

Charles Blendt is the present supervisor whose term expires December 31, 1975. Mr. Blendt was re-nominated by the Board as a candidate for the election. This procedure is in keeping with the rules as presented by the State Soil Conservation Commission in conducting the annual election of a supervisor.

## Electricity Is Needed

Because electricity is one of the farmer's most necessary commodities, electrical safety should be very important. However, electrical problems are the leading cause of farm structure fires, reports Ronald Jester, extension farm safety specialist at the University of Delaware Substation in Georgetown. The latest official statistics from the National Safety Council indicate that annually over 1,000 people die as a result of electrical accidents.

This extremely high toll is unnecessary, says Jester. Increasing your knowledge of electricity fundamentals will enhance your safety awareness in the use of electricity. A normal healthy adult can be fatally injured with as little as 60 milliamperes whereas the normal household current of 15 amperes could be fatal 250 times over.

Consequently, electrical facilities should be designed to comply with local and national codes. Electrical inspectors will assure that obvious hazards are not incorporated into electrical facilities. Unqualified people should not be allowed to work on your electrical sys-

tem. If you must make minor repairs, have a trained person to check it out, Jester recommends.

The following are key features of a safe electrical system:

Service entrance design—An adequate size source entrance is fundamental to a safe electrical system. Adequacy for the load to be served and a sufficient number of circuits are essential.

Wire size—Assure that the wire size will accommodate the estimated load and distance.

Wiring material—the material should abide by local building codes and be accepted to the intended environment.

Grounding—Proper installation of the ground rod will provide both safety and protection of your property from fire.

Circuit protection—Providing circuit overload protection with either fuses or circuit breakers is necessary. By-passing or over-fusing is asking for trouble.

Ground fault interrupters (GFI)—Offers shock protection. This device senses current leakage, such as through a person to ground, and instantly cuts the flow. Incidentally, the National Electrical Code now requires ground fault protection on outdoor and bathroom outlets in new homes.

In case of an electrical fire, use care in fighting the blaze. First, cut off the power if at all possible. Avoid use of water on the fire, as water can conduct injurious amounts of current back to you. Use either a CO2 extinguisher or a dry chemical extinguisher that carries a "C" rating.

In case of an electrical shock injury, time is a critical factor. If breathing stops, irreversible brain damage occurs somewhere between four to six minutes. The urgency is obvious. Since most farms are more than four to six minutes away from a doctor or emergency medical team, you must be prepared to take immediate action. Consequently, for this emergency as well as others that may occur, it is necessary for several persons on the farm to be trained in resuscitation techniques, preferably through Red Cross or other recognized courses.

Considering the nature of electric current and our almost constant exposure to it, our safety efforts must be continual. Think safety! Don't work with electrical circuits and wiring unless you know what you are doing.

## Fall Is Good Time

Fall is a good time to build a compost pile if you want good, rich synthetic manure for just the price of your yard and garden refuse. Pretty soon the leaves will be falling, the garden will need cleaning up, and the grass will need to be cut once or twice more. All materials make excellent compost along with kitchen

scraps and other organic matter.

Depending upon your resources, a number of frames can be constructed rather easily. Chicken wire supported by stakes, a wooden slatted bin, cinder blocks, or just a simple pit will give support for your compost pile. A good size heap should be about 4-6 feet high, 4 feet wide, and long enough for the material to be composted.

Plant material for composting is used on the first layer. The organic matter layer should be approximately 6-12 inches deep, then the top may be sprinkled with a complete fertilizer to help in the breakdown. Lime can also be added to counteract any acid buildup which might slow down microbial action. The organic level is then covered with one to three inches of soil. This layering is repeated until the pile reaches the desired height. The top of the pile should be depressed so it will hold some rainwater. The organic matter should be watered as the layers are built.

After a month the pile should be turned to facilitate even decomposition. The edges will dry out and tend to decompose more slowly than the center, thus necessitating the turning to aid even decomposition. There are many variations on this topic, and this brief description is not meant to be the last word on compost piles, but a guideline. Variations will suit different needs and budgets. In the end, however, you will have an excellent synthetic manure for the garden and flower bed use. Two to four bushels of well rotted compost per 100 square feet would be considered a moderate application in the home garden.

Home grounds spraying is just about over for the year. Many gardeners will neglect to clean their sprayers. To clean tank sprayers rinse with warm water first then add some warm water and trisodium phosphate



Pam Correll and Kelly Davis the two leading scorers for Woodbridges hockey team still have slim hopes for a State Tournament berth.

## Davis, Correll Lead Raiders

Behind the strong single attacker, Kelly Davis who scored three goals, the Woodbridge girls' hockey team downed a stubborn Milford team 4 to 3 on Tuesday afternoon.

It was a see-saw battle between these two teams. The game was played at Bridgeville. Milford drew first blood with a score after 17 minutes of the first half.

Woodbridge came back to tie the game at the half at one all on a score by Kelly Davis. That brought her total for the season to 21.

The senior Pam Correll drilled one into the nets to

make the score 2 to 1. Milford came fighting back with two quick scores one after eight minutes and the other after 10 minutes into the second half. The score stood at 3 to 2 in favor of Milford until Kelly Davis took charge. Miss Davis was the forward line in the first half as she attacked the ball time and time again. When Pam Correll scored in the second half the goal raised her season total to 12. It was all Kelly Davis, though, in the closing minutes of play. Woodbridge's record now stands at 7 and 3 for the season. They have one game remaining and that is with

Seaford away. According to Coach Miss Kay Smith, "I feel that we have a slim chance of going to the state tournament which starts in another week. Even if we beat Seaford, our chances are still slim that we will go to the state tournament." Laurel already has their

invitation nailed down to the state tournament. They are undefeated this year. A win against Seaford could produce a four way tie for second place in the Henlopen Conference. The state committee would then select the team with the best overall performance.

## Sussex County 4-H

### Has Three Winners

November 9 - International Food Day, substation 2 p.m.  
November 11 - Leaders Meeting, Substation, 7:30 p.m.

Sussex County had three 4-H winners at the St. 4-H Horse Show. The show was held at the Red Gate Farm, owned by Dr. W. L. Morz, near Dover.

Brenda Phillips, Hollymount 4-H Club, was champion in the Western Division. Her brother, Clint Phillips, was Reserve Champion.

Ginger Pratt, Greenwood Hi-Flyers, was reserve Champion in the Western Pony Division.

The 4-H's are to be congratulated for a job well done.

4-H is a Family Affair -- "Enroll the parent as you enroll the boy or girl" is good 4-H procedure. Much of the 4-H club work is

home-and-family centered, and the success of the member depends a great deal on the interest and enthusiasm of the parents. They can give guidance in project selection, advice, and encouragement in planning and carrying out the project. Some projects call for work similar to that being done on a larger scale by the parents of the 4-H's. This lets the club members work hand in hand with their parents and learn early some of the duties and responsibilities involved in operating a farm, a business or a home. Those interested should write the 4-H office, R.D. 2, Box 48, Georgetown -- or call 856-5250.

Club officers are reminded as they start the new year, of the importance of starting their meetings on time, having the program for the meeting well planned in advance, conducting the

meeting in a business-like manner and closing the meeting on time. By following this practice those in attendance will no doubt find the meetings interesting and enjoyable and will strive to be on hand the next time.

Club meetings for next week are: Mt. Pleasant on Tuesday; Belltown, Bridgeville Handy Helpers, Seaford Blue Jays, Bridgeville Wild Cats and Greenwood Hi-Flyers on Wednesday; and Coverdale on Thursday.

## Bowling Results

High Games		Team Standings	
Leonard Outten	234	W	L
Harold Brode	224	Taylor & Messick	20
Jack Sapp	217	McKnatt's Funeral	19
K. P. Outten	216	Home	8
Jack Kohland	213	Robbins Hardware	18
Leon Grodkiewicz	212	Food Rite	17 1/2
S. Baker	205	Dur-A-Clean	17
Donald Butler	200	Spoilers	16 1/2
		Moose "A"	16
		Butler's Fuel	15 1/2
		Burriss Foods	14
		Jarrell's Fuel	14
		Fry's American	12
		Penn Central	10
		Big John's Son	10
		Walley's Garage	8
		Moose "B"	8
		Quillen's Market	7 1/2

## USDA Offers Building Plans

Want to build a greenhouse, a roadside stand or a boat landing? How about a three-bedroom house or an "A" frame cabin...or a storm cellar, pasture drag or milk-parlor. Whatever it is, chances are the U.S. Department of Agriculture's plan service has something for you.

The plans come in two sizes—18 x 24 blueprints and smaller, more manageable, 8-1/2 x 11 reductions. The smaller scale option is a recent innovation, says University of Delaware extension agricultural engineer, Ernest Walpole. His office is the local source for the plans. All are working designs, complete enough to give to a contractor, or to use yourself if you're handy at construction projects.

Altogether there are several hundred plans to

choose from. Many are intended for use in production farming. Others would be useful to home gardeners, commercial nurserymen or communities planning a small recreational park. There are designs for people who own horses, and for people who want to build vacation cottages. There's even a plan for building a turtle trap.

To find out more about this comprehensive USDA service, contact your county extension agent in Newark, Dover or Georgetown, or contact Walpole directly at 738-2468.

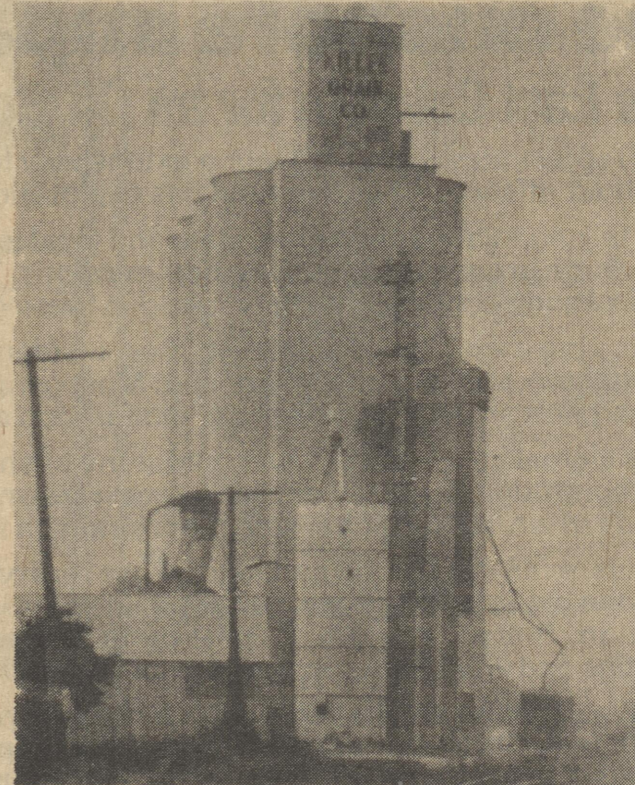
1972 CHICKASAW  
12x60 Mobile Home  
\$3,500  
Phone 398-8181

## JOHN H. DONATO

Plumbing & Heating  
Repairs & Alterations  
Boiler Cleanings  
398-8248  
42 Commerce St. - Harrington

## FARMERS SELL YOUR SOYBEANS

## To KILLEN GRAIN CO.



## HARRINGTON

RAY BRITTINGHAM, Elevator Supt.

FAST UNLOADING 7 A.M.  
UNTIL ---

Top Prices - Daily Payment

CALL 398-3296 For Daily Grain Prices

## Fall Harvest of Values

Continues Through Sunday at

**milafabrics**

JUST IN

A Shipment of NETS

5 yds- \$1

Rodney Village Shopping Center  
Dover  
674-1633

Mon.-Fri. 10 a.m.-9 p.m.  
Sat. 10 a.m.-6 p.m.  
Sun. 12 noon-5 p.m.

## SENIOR CITIZENS

You may now have your Social Security Check

mailed directly to your bank for deposit

to your account.

For details please stop in or call

The First National Bank  
of Harrington

398-3232

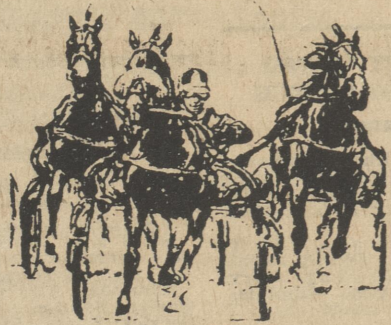
Remember--absolutely FREE checking accounts

for senior citizens

## "Last Big Week"

Pari. Mutuel Harness Racing

SEPT. 5 thru NOV. 1  
8:00 p.m. Nitely 6:30 Sunday  
Racing Wednesday thru Sunday



EXACTA every race BIG E  
Six \$3.00 QUINELLAS Two DOUBLES

Glass Enclosed Dining Room  
For Reservations Call 398-3840

HARRINGTON RACEWAY

U.S. Rte. 13  
HARRINGTON, DELAWARE



# SPORTS

KEITH S. BURGESS, Sports Editor

## Riddle Optimistic About Coming Harness Season

Dover Downs President and General Manager, John D. Riddle said today that he expects the upcoming harness season, which opens this Sunday, to produce far better results than any previous season. "I'm especially enthusiastic about the initial

response we've received from both the horsemen and our patrons," Riddle said. "We have an unprecedented demand for stall space in our stables and all the letters we've received from folks from New York to Virginia have been over whelming. If

everyone comes who said they were going to come, Dover Downs is going to be a pretty busy place. We've done a lot to promote opening day and opening week," Riddle continued, "and with free admission on opening day we should have a good

turnout and we hope this will get the season off to the best possible start.

"I think the most significant factor will be the new legislation," Riddle continued. "It's important to be optimistic at this stage and I think everyone who knows a little of our history is pulling for us, but looking at the situation realistically, we will still be facing much of the same competition that gave us so much trouble in 1974." "However," Riddle said, the legislation passed by the General Assembly

will allow us to operate within this competitive environment and I'm confident that our position as a major contributor of revenue to the State will be restored. It remains to be seen whether we'll be stabilized and I think this is important, not only for us, but also for the community."

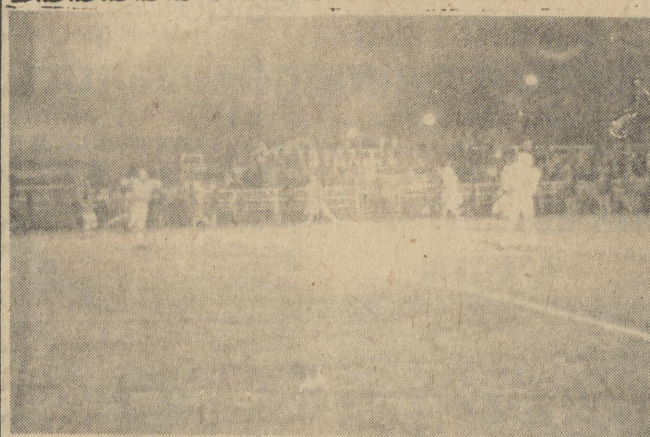
Sunday will mark the first time since March, 1974 that the Dover track has hosted harness racing events.

Post time for this Sunday's 10-race opening day program will be 1:30 p.m.

**Harrington Service Center**  
Specializing in BRAKE  
Also EXHAUST WORK  
We wash & polish cars.  
Clark St.-Harrington 398-8900

**TAYLOR & MESSICK, Inc.**  
John Deere Farm Implements  
Sales & Service  
Two-way Radios  
Phone 398-3729 Harrington, DE

**THE FIRST NATIONAL BANK OF HARRINGTON**  
In a hurry?  
DRIVE-IN!!  
"Better Banking From THE FIRST"



Jubilant follows the Spartans first touchdown of the night, a 21 yard scoring pass from Neal Smith to Wayne Voshell. This score tied the game and with the extra-point the Spartans took the lead.



The Lake Forest Band looks on as the Spartans score against Seaford last Friday.

## Sports Feature

### Spartans Downed By Seaford In Close Game

Lake Forest football team travelled to Seaford Friday to meet the Seaford Blue Jays. Seaford jumped to the lead in the first quarter when Ralph Cook intercepted a Neal Smith pass on the Seaford 45 yard line and raced it back to the Lake Forest's 24 yard marker. From there, Seaford on one pass play passed over the middle to end Larry Hearn for the first score of the ball game.

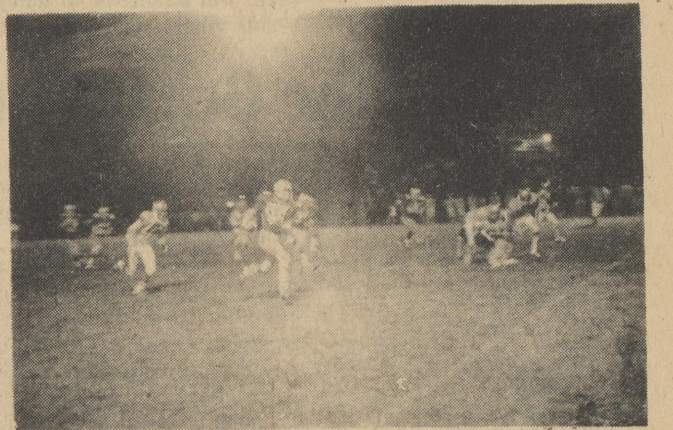
The Spartans came charging back and went in at halftime leading seven to six. On the strong right arm of much improved quarterback Neal Smith, the Spartans marched down the field in the second quarter on a passing strike from Smith to Wayne Voshell for a 21 yard scoring play. Voshell made

terrific catch look easy while fighting off several Seaford defenders. Smith made the PAT making the score seven to six. The third quarter play was what really hurt the Spartans. They ended up with minus yards rushing in this quarter. The team rushed for about 112 yards on the night on 35 carries. Penalties nullified all but 52 yards. Sophomore fullback Billy Moore starred in the first half with 51 yards in 12 carries. On two of those carries, penalties nullified good runs by Moore. The sophomore might have had a 100 yard plus night had not a second half injury knocked him out of the game. With Moore out of the line up, the Spartans' chances for victory were dampened. Moore

was hurt to the extent that he could not stand. He was taken to Naticoke Hospital in Seaford where his case was diagnosed as being a nerve injury and not a hip injury as was speculated in the beginning. Forced to almost abandon the running game, coach Fleming directed Smith to throw. The Spartans however were unable to move the ball in the third and fourth quarters of plays. Smith was called on repeatedly to punt from deep in his own territory. It was one of these punts from his own end zone that set up Seaford's winning score. Van Belcher took the punt and returned it to the Lake Forest 26 yard line. Few plays later Van Belcher took a pass from Derrickson for the score. At this point the

score was Seaford 12-Lake Forest 7. There were approximately eight and a half minutes left in the game at this point. With plenty of time for Lake Forest to pull it out, Neal Smith very coolly guided his team down the field to about the 15 yard line of Seaford. During this march, Smith time and time again hit his receivers with pin point accuracy. The Spartans during this spree showed Seaford many options from the winged T. Smith would roll out and pass or roll out and run the football. No one among the Spartan ranks and fans can deny the fact that this year's Spartan football team has shown all of us some exciting moments. However all of the Spartan fans wait patiently for a victory. Smith was seven for 16 for 112 yards in

the first half and 10 for 26 for 155 yards for the game. Smith also maintained his punting average of better than 49 yards per kick. When Lake Forest reached the 15 yard line of Seaford, Smith was sacked three times in a row. Seaford was able to stop Smith who up until this point had plenty of time to throw the ball by blitzing their linebackers. On the night Smith was sacked four times for a loss of 40 some yards. The loss of Billy Moore undoubtedly hurt Lake Forest, but other injuries as a result of earlier games kept Greg Pritchett and Donald Baynard out to the line up. Greg Shortell and Zack Taylor started at the corners for the defense, and their lack of



Benny Hickman [86] cuts to the sidelines and romps 35 yards Friday night in Lewes against Cape Henlopen.

### Woodbridge Shocks The Cape, 14-12

It was all Cape during the first quarter Friday night in a light rain. Woodbridge looked as though the Cape was going to blow them right off the field. In the first quarter alone, the Cape gained 161 yards on 17 running plays. In that running spree, the Cape scored two touchdowns. Each time they failed on the conversion or the pass for the extra point. The Cape rushed all night for 246 yards in 43 efforts for an average of 5.7 yards per carry.

Coach Jim Foster in his first year as head football coach must have really let the Woodbridge players have it during half time. During the first half, he was barking at the players to try harder and contain the Cape on the end sweeps. The Cape continued to sweep the ends with reckless abandon.

In the third quarter, Woodbridge came out fired up. They scored twice in this quarter to rack up the 14 points and enough for the eventual win. Senior quarterback Rickie Tull was 0 for two in passing in the first half, but in the second half, he connected three times out of six attempts for 52 yards and two touchdowns. Both touchdowns were to Spank Neal. One went for six yards and the other was a 25 yard toss. Each conversion was by Clifton Hardesty. The real workhorse on the ground was again senior halfback Chuckie Hopkins, who carried 14 times for 118 yards, for an average of just over eight yards per carry. Hopkins gained more than half of the total rushing which was 214 yards. The team average was just over five yards per carry. Doug Wood carried eight times for 44 yards.

Statistically it looked as though the Cape should have won the game. After the first quarter, the Cape slowly went down hill, whereas the Riders gradually got better after the poor first quarter. In the third quarter when Woodbridge did all of its scoring, Chuckie Hopkins on one play ran 41 yards. He moved the ball on the play from the Woodbridge 26 yard line to the Cape's 33. Seven plays later Rickie Tull passed to Spank Neal for the six points.

Woodbridge has a record now of three and three on the season. They have been impressive all season long, and possibly should be four and two at this point. They lost a heart breaker to Seaford after statistically running all over Seaford in that game. Woodbridge had a 90 yard opening kick-off nullified by a clipping penalty in the Seaford game. It is a team that won't give up, and has the ability to come from behind. Senior quarterback Rickie Tull demonstrates coolness throughout each contest. This is the mark of a good field general. The big asset the team has going for it is the fact that they have an explosive offense. One that can score and score quickly on their opponent. In the Cape contest, Tull averaged 35 yards again on his punts, kicking four times for 140 yards.

The next opponent Woodbridge faces is Indian River at home. IR also has a three and three record for the season.

It was a thriller right down to the last seconds of play. The Cape desperately tried to pull it out. While Bill Dunning of the Cape was running recklessly all night, mainly on end sweeps the had 108 yards for the night

### Soccer Team Defeated

On Tuesday Lake Forest booters traveled to Sussex Central and came out on the short end of a real heart breaker. The final score was 2 to 1 in Sussex Central's favor. It marked the fifth time this year that the soccer team lost by one goal margin. Again the Spartans had more shots on goal than their opponents. Lake Forest had 18 while Sussex Central had only 12.

the penalty kick score, George Luff continued to protest the call. The referee without warning ejected Luff from the game. This was the first time this season a Spartan has been thrown out of a game. Coach Buck remarked following the game he felt the game has been poorly officiated.

Sussex Central scored first and led at the half 1 to 0. Kevin Peck drilled a penalty kick through to knot the score at one apiece. Sussex Central's winning goal came later on a penalty kick. The penalty call, according to several team members, was a bad call. The call was tripping on Rob Young. In actuality, the Sussex Central player overran the ball and fell. After

In other incidents, Buck pointed out that on three different occasions Jimmie Callaway, Paul Miller and Kenny Johnson had drilled their kick to the goal. The ball hit the goal post on the inside and rebounded out again. The referees refused to give Lake Forest a goal on each such shot, according to Buck. Luff had five saves for the game. His replacement was Kenny Quillen, who had three saves. The record on the year to date is three and six.



Chris Palimasano of Lake Forest's cross-country team heads for the finish line in the Spartans last home meet.

### Harriers Split, Tie For League Lead

Lake Forest's cross-country team's 15-meet winning streak ended at Cape Henlopen Thursday afternoon when the host Vikings took a narrow 25-30 verdict. The Spartans' last dual-meet loss was in 1973. Four days later, Caesar Rodney, who had fallen by one point to Lake Forest earlier beat the Vikings, also by one point, to virtually assure a three-way tie for the Henlopen conference championship. Lake Forest was an outright winner in 1974.

record with White posting 13.55 for a sandy 2.6 mile course. Sophomore Danny Parker of Lake Forest just missed breaking the old record. Chuck Carter, a senior novice, was again No. 2 Spartan as he continues his late-season upward surge. Chris Palmisano trailed Vikings Street and Miller in the late going. However, an exceptionally courageous stretch run sent him past the pair.

Terry Pettyjohn spurred past McNair of the Cape at the tape, but the die was cast.

Howard Parker, like Carter, is running varsity cross-country for the first time as a senior.



Chuckie Hopkins [16] and Dave Wadder [37] of WHS converge on Bill Dunning from the Cape for a hard tackle the kind of tackles Woodbridge has been making all year. Rydell Fletcher [65] a tackle backs up the play.

### Grid Injury Jinx Strikes

Any intelligent person aspiring to play varsity football undoubtedly realizes that the sport is rought with injuries a definite possibility.

Statistics might show that a certain percentage of players who play four years could expect a serious injury at some time during that period. But a section east of Harrington on the Millford Road is batting .1000. Five boys played varsity football. All five suffered painful incapacitating injuries.

Bob Smith at Harrington High injured a leg in a contest at Lewes High that brought his football career to an early close. Mike Davis, a natural athlete, had outstanding ability in at least four sports, but an early season leg injury kept him sidelined for a long period of time and severely hampered the latter stages of his scholastic athletic career.

James "Chip" Moore, who lives next door to Davis, messed up his knees playing football, but eventually persevered to such an extent that he became a fine basketball player. Neal Smith, the current Spartan quarterback, a brother to Bob Smith, had a separated shoulder at Sussex Central and missed most of one season. Friday night at Seaford High, Lake Forest's leading ground gainer was Billy Moore, Chip's brother. The sophomore fullback was hit hard on a play, get up, but fell again. He was taken to Seaford's Naticoke Hospital where this writer visited him on Monday. "Colonel Klink" was somewhat mortified because they put him in the pediatrics section. After all, the good colonel is all of fifteen years old.

Billy Moore, as of Monday, had either a pinched nerve in his back or a cracked vertebrae. He was to get the verdict later. Like Davis, he has shown excellent ability in several sports, including football, basketball, cross country, track and baseball. We hope he recovers fully for the boy loves to compete. For the jinxed area, five out of five is bad.

### Harriers Are Perfect Against Indian River

A new winning streak was started when Indian River was beaten 15-50 by Lake Forest's cross-country team on Monday afternoon. This is the equivalent to a 10-0 baseball shutout.

Warner, Indian River freshman. Juniors Herb Jarrell and Paul McClellan were at 13.51 and 13.59, respectively.

The super runners traverse Lake Forest's 2.4 mile hill-and-dale layout in under 13 minutes. The excellent ones are those talented runners who break 14 minutes. Sophomore Danny Parker hit 12.51 to break the tape with sensational senior, first-year runner, Chuck Carter, just two seconds away from "super" status with 13.01.

Can't-miss Chipman school prospects Billy Mitchell, John Gilmore and Nathan Morris were in the low 15's. Randy Ramirez and Dale Jarrell reached new lows. Despite weak opposition many of the local runners turned in their finest efforts, to date.

Terry Pettyjohn, Chris Palmisano, Harry Benson, Howard Parker and Craig Kashner ranged from 13.07 to 13.31 to record the perfect score. Bob Mullane, in eighth, edged Brendan

Lake Forest	Woodbridge	Kent Vo-Tech	School Menus
<b>Monday, Nov. 3</b> Cheese steak sandwich, french fries, lettuce and tomato, frozen French creme, milk.	<b>Monday, Nov. 3</b> Hot diggity dog, baked beans, waldorf salad, oatmeal cookies.	<b>Monday, Nov. 3</b> Salisbury steak, rice and gravy, cole slaw, biscuits and butter, chilled peaches.	bread and butter, brownies.
<b>Tuesday, Nov. 4</b> Lasagna, shades o'green salad, Vienna bread and butter, dessert, milk.	<b>Tuesday, Nov. 4</b> Steak sandwich, baked macaroni and cheese, relish tray, applesauce cake.	<b>Tuesday, Nov. 4</b> Super fish, stewed tomatoes, macaroni & cheese, cornbread with butter, lemon pudding, milk.	(macaroni salad)
<b>Wednesday, Nov. 5</b> Tomato soup, grilled cheese sandwich, mixed fruit, dessert, milk.	<b>Wednesday, Nov. 5</b> Salisbury steak, rice and gravy, cole slaw, biscuits and butter, chilled peaches.	<b>Wednesday, Nov. 5</b> Grilled cheese, homemade vegetable soup, corn chips, ice-cream or fresh fruit, milk.	<b>Wednesday, Nov. 5</b> Sloppy joe on bun, buttered corn, spiced apple-sauce, wacky cake, milk, (garden salad)
<b>Thursday, Nov. 6</b> Baked chicken, marshmallow yams, broccoli, Vienna bread and butter, milk.	<b>Thursday, Nov. 6</b> Beef-A-Roni, cut green beans, tossed salad, French	<b>Thursday, Nov. 6</b> Crispy chicken, fluffy rice with gravy, cranberry sauce, buttered peas, hot rolls with butter, orange jello, milk.	<b>Thursday, Nov. 6</b> Grilled cheese, homemade vegetable soup, corn chips, ice-cream or fresh fruit, milk.
<b>Friday, Nov. 7</b> Tuna boat, orange juice,		<b>Friday, Nov. 7</b> Grilled cheese, homemade vegetable soup, corn chips, ice-cream or fresh fruit, milk.	<b>Friday, Nov. 7</b> Sunshine salad)

## FFA Team To Participate In National Contest

Three members of the Woodbridge FFA Chapter will travel to Kansas City, Missouri in November to participate in the National FFA Dairy Cattle contest. The Contest which is held in conjunction with the 48th National FFA Convention is being sponsored as a special project of the National FFA Foundation by the Associated Milk Producers Inc., and the Mid-America Dairywomen, Inc., two of the largest dairy marketing cooperatives in the nation. Members of the Wood-

bridge team are Jim Vanderwende, Ronnie Cain, and Carla Vanderwende, and won this high honor by placing 1st, 2nd, and 3rd respectively in state competition. Dennis Harcum, vocational agriculture instructor and chapter advisor is the team coach.

The Dairy Cattle Contest is one of seven national agricultural contests conducted annually by the national FFA organization as part of the National FFA Convention. The Woodbridge team will be one of 43 dairy teams which will judge nine

classes of dairy cattle provided by the American Royal Livestock and Horse show of Kansas City, Missouri. The contest is one of many educational activities at the national FFA Convention in which FFA members put into practice the lessons taught in the vocational agriculture classroom.

Jim and Carla Vanderwende are the son and daughter of Mr. and Mrs. William Vanderwende of Bridgeville, Ronnie Cain is the son of Mr. and Mrs. Noah Cain of Greenwood.



These three students from Woodbridge H.S. finished in 3rd place in a recently held Poultry Judging contest held in Hershey, Pa., on October 21, 22, and 23 of October. They competed with students from Delaware, Maryland, N.H., Ohio, R.I., Pa., and W. Va. They are left to right: Randy Kauffman, a senior, Steve Chupp, a sophomore, and Randy Willey, a junior. All of the boys are residents of near Greenwood.



These three students from Woodbridge High School were recently chosen to represent their 4-H group at the 4-H Congress in Chicago. They were chosen through state competition. They are left to right: Cindy Moore, a junior at WHS for Food Preservation, Carol Lockerman, a senior WHS in Consumer Education, and Yolanda Blackwell for dress review and modeling. All the girls are from Bridgeville. They were required to exhibit their topic and write a paper on it.

## The Green Thumb

This week I received several calls about dying pine trees. Most of the "dying" is the old needles which normally turn brown and fall at this time.

Spruce, fir, hemlock, yews and pines will retain their needles for three to five years and drop the old ones retaining just the newer needles. Most years the annual leaf drop is unnoticed because the green needles cover the old dead ones.

This year is one of those years when we have an extra heavy needle drop because of the wet growing season earlier. However, the old needles are the only ones that should be turning yellow and falling. If the new needles are dropping you probably have a root problem.

Root problems or root damage could be caused by too much water around the roots and root rot starts. Also mice can girdle the trunk just below the soil

surface restricting the nutrients and water that reach the top.

We have also found a fungus that can attack and kill older (15 to 30 year old) Austrian and Japanese Black Pines. We don't know much about this fungus and we don't have a cure. However, this problem seems to be more serious in New Castle County than here in Sussex.

Fall is a good time to

apply a lawn herbicide to control garlic and several other weeds. A good herbicide combination is 2,4-D plus silvex. This combination is fairly effective in the control of wild strawberry and some of the other tough to control weeds.

Herbicides applied in the fall usually give good control without the damage that occurs in the spring. Many times we see 2,4-D damage to tomatoes, annual flowers and ornamental plants. In the fall these are either

going dormant or are killed by frost so damage is not as serious.

Be careful when applying herbicides so they don't drift, especially around greenhouses where running fans could pull vapors in and cause damage to sensitive plants. If you use a chemical like Banvel (which is absorbed by the roots) be sure to stay away from desirable plants. Remember a plant's roots spread at least the same distance as the branches.

Peninsula Horticultural society will meet on December 1 and 2 at the Holiday Inn at Salisbury, Md. The general session and vegetable meeting will be December 1. The greenhouse and nursery meeting on December 2. The program will be available in mid-November. If you are not on the Peninsula Horticultural mailing list you can obtain information on the meeting from your county Extension Office about November 20.

## Large Crowd Attends Open House

A crowd was in attendance at the open house held by the Lake Forest South Elementary School last Thursday night. Parents gathered to visit classrooms, meet teachers, and to hear the principal, Mr. Cline, explain several aspects of the school program.

During the evening a Parents' Advisory Board to the Title I program was elected. The purpose of the Board is to provide a resource of review and suggestion from parents whose children are involved in the Title I program and also from parents whose children are not involved. Those elected were

such complaints in this district.

The use of the Wisconsin Design, a management system for use with the reading program, was discussed. This system enables to identify the skills in which a child needs help and to pass over those in which he does not

It was explained that the Holt Math Series, introduced into district schools last, is being more fully implemented this year. This series allows for individualization in the teaching of math. Most of the individualization is being done in

grades 3-6.

An enriched reading program based around an enriched reading library of 100 books in each classroom is being provided in the fifth and sixth grade. The same type of program is to be tested in the fourth grade.

The new teacher, Mrs. Debra McKinney in the Learning Center was introduced. Aides new to Lake Forest South or in new positions here were also introduced. They are Mrs. Shirley Johnson, Mrs. Marie Bradley, and Mrs. Donna Merchant, all in the third grade.

## Leaflet Available

The Delaware Heart Association, as part of its continuing education program on the dangers of high blood pressure, has obtained a new reprint for free distribution.

The article, "What Every Woman Should Know About High Blood Pressure," is by Harriet P. Dustan, M.D., vice chairman of the Research Division of the Cleveland Clinic, and a clinical professor of medicine at Case Western Reserve University School of Medicine, Cleveland. It first appeared in "Family Health" magazine.

Dr. Dustan describes clues that women should be alert to in order to cope with high blood pressure. She warns that taking contraceptive pills is associated with high blood pressure in some women -- "so it's a good idea to ask your doctor to measure your blood pressure before prescribing the pill and then to have your blood pressure checked every six months or so. The article also discusses high blood pressure during and after pregnancy and after menopause; the high incidence of high blood pressure among black women; precautionary steps that can be taken; and the method of detecting the condition. Free copies of the reprint can be obtained by calling the Delaware Heart Association office at 654-5269 in Wilmington or 856-7386 in Georgetown.

**1971 PEARLESS**  
12x60 Mobile Home  
**\$3,500**  
Phone 398-8181

## Chipman Band Takes Part In Parades

On Saturday, Oct. 25, the W.T. Chipman Band participated in the Milford and Dover Halloween Parades. Though the day was dark and dreary, the Chipman Band sparkled in their new uniforms in both Milford and Dover. The Chipman Band won the first place award in the Junior Division and

were awarded \$100 and a beautiful trophy for their outstanding display of marching and musicianship. The band played a song that was hit a few years ago entitled the "Cisco Kid."

marched before this year; it took a lot of cooperation and dedication on their part. They deserve all that they receive." The Chipman Band also did well in the Dover Halloween parade which was a non-competitive parade. The band did receive a \$50 donation for participating

# AGWAY

## CITRUS SALE

Imported from Florida Guaranteed Grade, U.S. No. 1  
MUST ORDER BY NOV. 25 FOR DEC. 11 PICK-UP

<b>FLORIDA</b>	<b>TANGELO</b>
<b>NAVEL ORANGES</b>	<b>ORANGES</b>
<b>\$6.90</b>	<b>\$6.00</b>
<b>WHITE GRAPEFRUIT</b>	<b>PINK GRAPEFRUIT</b>
<b>\$5.75</b>	<b>\$6.25</b>

**DOVER AGWAY**  
New Burton Road  
Dover 674-1610

monthly payments available through TELMARK  
AGWAY's own credit plan

## Grand Opening

Thurs. Nov. 6 9 a.m.

## Alice's Clothes Tree

Distinctive Apparel

Milford Plaza Shopping Center

Drawings For

\$100 & \$50 Certificates and for Merchandise

Hours  
9-5 Daily  
9-9 Friday  
9-6 Saturday

422-3707

Master Charge Bank Americard WSFS



## The Spirit of Christmas 1976

Begins

With A

'76

## CHRISTMAS CLUB

The 49'ers Club

NOW OPEN

Pay 49 Weeks

You Get

FREE

The 50th Week

## THE FIRST NATIONAL BANK OF HARRINGTON

Harrington, Delaware

398-3232

Member F.D.I.C.



### FIFER FARM APPLES

Cider Pumpkins Indian Corn  
Also Golden Delicious and Staymen

## FIFER FARMS

Packing House near Rising Sun

located on Rd. 30 & 60  
in Millsboro, Del.  
Phone 687-6847

## No Job Too Big Or Too Little For Us.

We Do :

Letterheads Envelopes Business Forms  
Posters Business Cards Billheads  
Business Stationery

Your printing needs are our pleasure.

The Harrington Journal

Call 398-3206

NATURAL HAIR GROWTH  
A NEW DISCOVERY

Just spray this and so. The hair will fall out and grow back again.

**MONKEY BACK GUARANTEE**  
For SAMPLE cost and list. Send a 10¢ SAMPLE envelope for NATURAL HAIR GROWTH. P.O. Box 1439, Harrington, Pa. 17938.

Call Your Local Agent For Local Service

Roughley Insurance Service

Phone 398-3551  
398-3997  
Harrington, Del.

Moving Headaches

# Aspirin Or Organization

If you are moving to a new place, start getting ready to give your new address to all people and organizations needing it, suggests Coral Morris, extension home management specialist at the University of Delaware. Even if you won't move for another six months and don't know your new address, start now.

Begin listing every person and place you will need to notify. You might start your list today as you look through the family mail. Then keep adding to your list. Besides the name, you'll need to keep the address and account number if there is one.

The following list might help you remember the places you need to notify:

1. All magazines, book and record clubs, catalogs, yearly books and newsletters.
2. All mailing lists your family is on including alumni organizations, YMCA, 4-H, lodges and professional organizations.
3. Each company or store that sends you a monthly statement, such as gasoline

companies, department and catalog stores and travel clubs.

4. All insurance companies, banks, credit unions and investment agencies.

5. All utilities now serving you, including electric, gas, garbage pick-up and cable TV.

6. The post office both at the old location and the new one.

Your list may include many more names than those suggested, you can develop it as a permanent record of addresses and account numbers for this and future moves or other uses, suggests Ms. Morris.

Compiling the first list in hardest. For the next move, just omit names not applicable, add new ones and change the address for others.

As soon as you know your new address and your moving date, start contacting each name on the list. The post office has handy cards available for such purposes.

Some publishing companies will change the addresses of all magazines you receive—even if you didn't

order the magazine from them.

It takes only a few days to order inexpensive return address stickers and these are easier to use than writing out your address each time you fill out a card.

You can use up the last of your old address stickers as well as some new ones. Besides saving time, labels provide legible information. Give an address sticker to each friend who says "be sure to give me your new address."

When you begin sending out change-of-address notices, check off each name as you send the notice. Also write ahead to the new post office and ask that all mail for your family be held for your arrival.

By organizing your change of address, you can avoid many hours of work and frustration. And you'll be sure this part of your move to a new home will go smoothly. Begin planning with your mover well in advance. Prior planning is the basis for a satisfactory move. It is the most important thing you will do.



Tfc. William H. Porter



Tfc. James H. Stevenson

## 2 Troopers Promoted

Two men in Troop 5 in Bridgeville were recently promoted to Trooper First Class. They are Tfc. William H. Porter, of Harrington and Tfc. James H. Stevenson, of Georgetown. Their promotions became effective

on the 16th of October. Both men were appointed to the Delaware State Police on October 1st, 1972. Both are assigned to Troop 5's Traffic Division, and according to their supervisors, are outstanding officers.

### Notice To Viola Residents

Trick or treat night will be Thursday, October 30th between the hours of 6 p.m. and 9 p.m. [for the town limits] Any violators will be prosecuted.

## Unicef Provides Many Things

In 1974 UNICEF provided enough BCG vaccine to immunize 54 million children against tuberculosis. The U.N. Children's Fund also supplies vaccines to protect Third World children against typhoid fever, smallpox and measles.

Lack of clean water is one of the most serious health hazards for children and mothers in many developing countries. In 1974,

49,000 village water supply systems aided by UNICEF brought the benefits of safe water to 8.8 million people.

In Southeast Asia alone, 100,000 children go blind each year as a result of lack of Vitamin A. The price of a small bag of potato chips or a candy bar -- donated to UNICEF -- can provide the Vitamin A capsules needed to protect three children from blindness for an entire year.

Every dollar contributed to UNICEF for children's welfare is more than matched in goods, services and manpower by the developing countries that receive assistance.

UNICEF assists developing countries in meeting the essential needs of their children by helping establish packages of basic social services at the village level.

## The Green Thumb

S. Derby Walker, Jr.  
Assistant County Agent

If you have tender plants that have a hard time getting through our winters, why not build yourself an overwintering box. It's nothing, really, but a simplified cold frame. According to Delaware extension horticulturist, Dr. Charles Dunham, it's very easy to construct.

Routed cuttings of hardy plants and seedlings that have been grown in pots can be successfully overwintered in the box. And lots of perennials can be divided up and held in the box for

planting out next year. If you buy perennials through the mail and they come this fall, you can plant them in your overwintering box. You'll have much better plants to set out next spring than if you wait to buy them.

Dunham has prepared a fact sheet on building an overwintering box. Call you county extension agent in Newark, Dover or Georgetown for a free copy. Or write Mail Room, Agricultural Hall, University of Delaware, Newark, DE 19711.

## Thursday Is Payday For Loto-Superfecta

Peter M. Simmons, Acting Lottery Director, today invited the public to attend Delaware's Loto-Superfecta Sweepstakes drawing to be held at the Delaware Lottery Office, 1679 South Dupont Highway, Dover. The drawings will be held today, October 30. 118-\$25 prizes and 75-\$100 prizes will be drawn between 5 and 7 p.m.

Beginning at 7 p.m., 4-\$500 prizes will be drawn; 1-\$1000 prize and 1-\$2000 prize; 1-\$5000 prize, and finally, 1-\$10,000 prize. The

drawings to determine the top eight Loto-Superfecta Sweepstakes winners will be broadcast live over Delaware's Radio stations beginning at 7 p.m.



Scene at the opening of Alice's Clothes Tree in Milford Plaza Shopping Center on Friday. Shown in the picture left to right: Alice Hudson, store owner, Alice Lynch, Leona Argo and Bonnie Benson of the sales staff. Pat Dallas was absent from photo. Mrs. Hudson stated that she was pleased with her opening as any customers and well wishers came to the store.

## Leon Porter Is Member of AIDS

Leon Porter of Porters and Sons Cleaning Services, Harrington, has been admitted to membership to AIDS International (Association of Interior Decor Specialists) it was announced this week by AIDS International president C. Thomas Wright.

AIDS International is a nonprofit organization, the only international association representing maintenance of interior decor furnishings, it has members throughout the United States, Canada and in 24 foreign countries.

One of its primary functions is to conduct research into the most effective and safest methods of cleaning floor coverings, drapery and upholstery fabrics, and related services.

## Flu Shots Available

Flu shots are now available for the elderly and other "high risk" Delawareans, through the Division of Public Health.

Any Delaware resident over 60 years of age is

eligible for the shot, a combined vaccine which protects against the types of influenza expected this year. The immunization also is available for anyone with a chronic

disease—such as heart or kidney disease and diabetes. A fee of \$1 will be charged. However, Division officials said the fee will be waived for anyone who cannot afford it.

**'72 LIBERTY**  
12x55 Mobile Home  
**\$3,500**  
Phone 398-8181

**Save Now . . . Buy Later**

**Rest Easy For Christmas 1976**

With An Interest Bearing

**CHRISTMAS CLUB**

at

**PEOPLE'S BANK**

Member F.D.I.C.

Commerce St.      Harrington      398-3256

**JOIN NOW**

## Great Quotes From Our American Heritage

"Power tends to corrupt; absolute power corrupts absolutely."

Lord Acton from a letter to Bishop Mandell Creighton, 1887.



"The Spirit of '76"

Suite 3A Treadway Towers/Dover, Delaware 19901 (302) 736-1181



ANDY POLITZ, President of International Underwriters Insurance

# Farrow Realty

313 South State Street      Land      Dover, Delaware

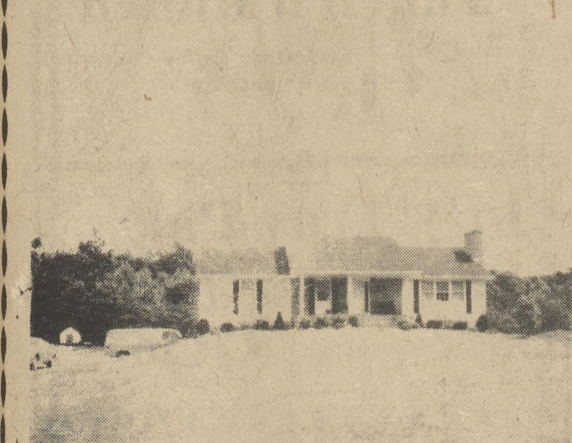
734-5758

**Residential**

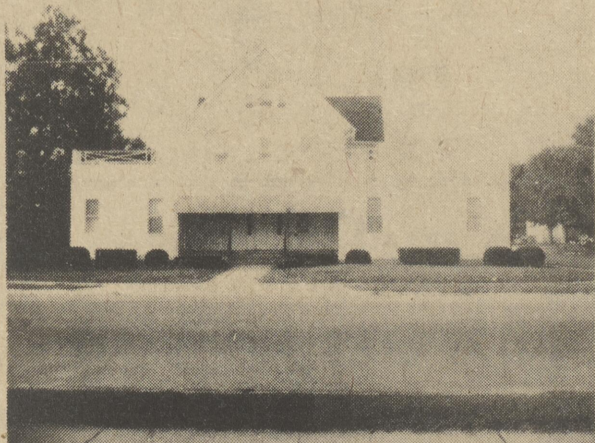
**Investment**



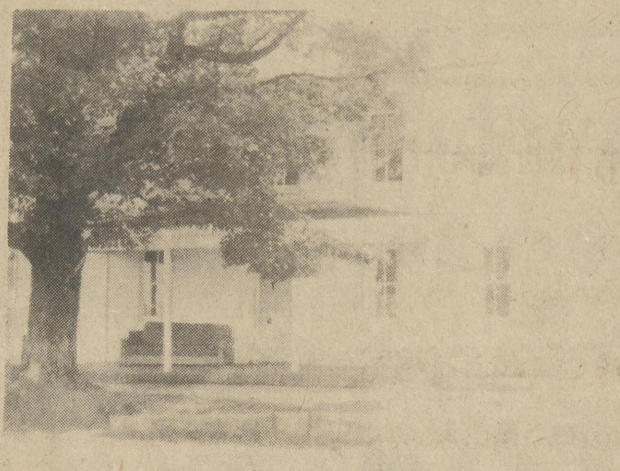
\*Two story home in Felton. Bb hot water heat, new modern kitchen, fireplace in family room and 3 bedrooms.



\*West of Greenwood - Beautiful hillside home on a 1 1/2 acre wooded lot. 3 bed rooms, 2 car garage, fireplace, dishwasher, \$59,500



Suitable for home and business, or can be converted to an apartment house. 3 Zoned hot water heating system, central air hardwood floors, 2 car garage with concrete floor and second floor suitable for another apartment.



Older Home In Farmington, Alum. Siding, Some Panelling. Good Buy At \$11,500.

**Broker**  
**Harry G. Farrow, Jr.**  
398-3250

**Sales Consultants:**

**Barbara Elliott 678-2647**  
**Emma Craft 697-1613**  
**Terry Noble 349-5107**

## ALL 1975 LEFT-OVER MODELS DISCOUNTED SLIGHTLY ABOVE INVOICE

STOCK NO.	MODELS
G9	GRANADA 4-dr. Sed. White, 6 cyl.
G10	GRANADA 4-dr. Sed. Green Met. Glow 6 cyl.
MK 6	MAVERICK 2-dr. Sed. Polar White, 6 cyl.
T27	F150 Silver, 8 cyl.
T30	F101 Baytree Green, 8 cyl.
FC41	GRAN TORINO 2-dr. H.T. Pastel Blue, 8 cyl.
T55	E250 CARGO VAN Spec. Paint, 8 cyl.
FC46	TORINO 2-dr. H.T. Med. Gold Met., 8 cyl.
M30	MARQUIS 4-dr. Brom Black, 8 cyl.
MS4	MUSTANG II HT Pastel Blue, 4 cyl.
FC48	RANCH WAGON 500 Tan, 8 cyl.
L13	CONTINENTAL 4-dr. Sed. Maize Yellow

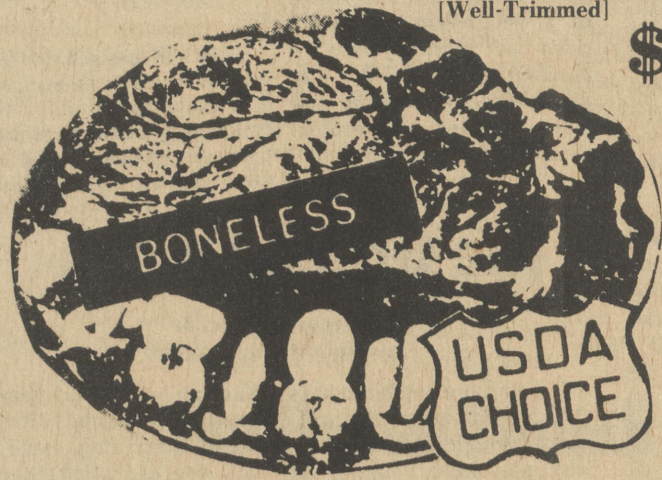
### USED CARS

YEAR	NO.
75	1 Models to choose from
74	4 Models to choose from
73	7 Models to choose from
72	12 Models to choose from
71	2 Models to choose from
70	3 Models to choose from

Plenty of 1969 and older cars to choose from. Also a good selection of used trucks.

**WEBB'S**  
**Ford, Lincoln & Mercury**  
Milford, Del. 422-8071

# Crosscut Roast Boneless-Rolled



[Well-Trimmed]  
**\$1.39**  
lb.

# Beef Sale

Quillens

## Home Made Pure Pork Sausage

Loose **\$1.19** lb.  
Stuffed **\$1.29** lb.

## Chuck Roast



## Oscar Mayer's



All-Meat

## First Cuts

Bone-In  
[Well-Trimmed]  
**89c** lb.

## Center Cuts

Bone-In  
[Well-Trimmed]  
**99c** lb.

## Jamestown [Smithfield Cured]

## Sliced Bacon

**\$1.49** 1 lb. pkg.

## Franks

**99c** 1 lb. vac-pac

Boneless  
[Well-Trimmed]  
**\$1.19** lb.

## Smithfield Pure Lard

2 lb. pkg.  
**\$1.19**

## Beef Neck Bones

**49c** lb.

## Ground Chuck

[Extra-Lean] 5 lbs. or more  
**\$1.09** lb. **99c** lb.

## Beef Cubes

[Extra-Lean]  
**\$1.29** lb.

## Carson's Air-Dried Sliced Dried Beef

4 oz. pkg.  
**99c**

## Country Market

# PRODUCE

with that "Just Picked" Goodness

## Old Virginia

**99c**

## Apple Sauce

16 oz. cans

**\$1.39**

## White Bread

22 oz loaf **39c**

3 loaves **\$1**

## Red Tokay



## Grapes

**39c** 3 lbs. **\$1**

## Herr's

Potato Chips  
[new 1 lb. box]  
reg. price 20c off  
**\$1.49** **\$1.29**

## Old Virginia

## Apple Juice

qt. jar

**39c**

## "60 Cremes" Duplex Creme

## Sandwich

## Cookies

20 oz. pkg **79c**

## Large Crisp Lettuce

**39c** head

## Fresh Florida Oranges

100 size  
6 for **39c** **69c** dozen



## Quaker's Quick Oats

**99c** large 42 oz. pkg.

## "Kooly Kupps"

## Foam Drinking Cups

2 pkg. of 50  
9 oz. cups **\$1**

## Armours

## Potted Meat

6 3 oz. cans **\$1**



## Chef Boy-ar-dee Spaghetti Sauce

(Plain or With Meat) 29 oz. jar

**69c**

## Wisk Heavy Duty

Liquid Detergent **\$3.69** gal jug

## Morton's Pot Pies

Frozen **5** 8 oz. pkg. **\$1**

## Franklin's Crunch'n Munch

3 7 oz. pkgs. **\$1** [Buttery Toffee Popcorn with peanuts]

## "Peak" Permanent

Anti-Freeze **\$3.29** gal.

Normans  
Steakettes **\$1.19** 10 oz. pkg. [waffle thin beef slices]

Kraft Pure **99c** 1/2 gal. jug  
Orange Juice

Jiffy Tray-Pak  
Veal and Beef Patties  
16 oz. pkg. **99c**

# QUILLEN'S DAIRY MARKET

We reserve the right to limit quantities

Open EVERY DAY of the year 8:00 A.M. - 10:00 P.M.

For Your Convenience

Dorman St.

Phone 398-8768

Harrington, De!

Prices effective Oct. 30, 31, and Nov. 1.

# GET A GREAT DEAL

It's our once-a-year Demonstrator Sale!

**EXPANSION SALE!**

**SAVE NOW ON QUALITY USED CARS**

1973 DATSUN 240Z, 4 Speed Transmission, AM/FM Stereo Tape, New Tire, Very Low Mileage, Sharp.	\$1695	1971 DATSUN Station Wagon, 4 Speed, Vinyl Roof, Radio and Heater, In Top Condition.	\$1980	1973 DATSUN Station Wagon, 4 Speed, Radio and Heater, Excellent Economy Family Wagon.	\$3088	1973 TR-6 Exceptionally Clean, One Owner, 4 Speed Transmission, Radial Tires, Must Be Seen.	\$3395
1974 DATSUN Pickup, Automatic Transmission, West Coast Mirrors, Very Low Mileage, Exceptionally Clean Inside and Out.	\$3235	1968 MERCURY Station Wagon Automatic Transmission, Air Condition, Power Steering, Power Brakes, Looks Good, Runs Well.	\$895	1974 DATSUN B210, Original 600 Miles, Automatic Transmission, Vinyl Roof, Radio & Heater, Same as New.	\$3195	1973 VOLVO 4 Door, Original 30,000 Miles, Radio & Heater, Power Disc Brakes, Extra Clean Inside and Out.	\$3995
1972 MG Midget, Mag-Wheels, 4 Speed Transmission, Radio and Heater, Extra Sharp Sports car.	\$2395	1973 DART 2 Door, Sport Coupe, Sliding Sun Roof, Automatic Transmission, Power Steering, Extra Clean.	\$2695	1972 SUBARU S-W, Economical 4 Speed, Front Wheel Drive, Radial Tires, AM Radio, Heater, Ideal Family Wagon.	\$1995	1973 CHEVY Malibu, 4 Door, Automatic Transmission, Factory Air Conditioning, Vinyl Roof, Power Steering, Radio & Heater, Very Nice.	\$2695
1972 VEGA 2 Door With Automatic Transmission, Radio, Heater, Must Be Seen.	\$1995	1974 DATSUN B210, 2 Door, 4 Speed, Original 9,000 Miles, Like New Inside and Out.	\$3088	1972 CHRYSLER 4 Door Hardtop, Factory Air, Automatic Transmission, Power Steering & Vinyl Roof, Original Inside & Out.	\$2295	1973 MGB Convertible, 4 Speed, Mag Wheels, AM-FM Radio, Extra Sharp Inside & Out.	\$3695
1972 FORD Station Wagon, 10 Passenger Country Squire Factory Air, Power Steering, and Brakes, Really Nice.	\$2495	1971 VOLVO Station Wagon, 4 Speed Transmission, New Tires, Radio and Heater, Disc Brakes, Exceptionally Nice.	\$2995	1974 TORINO Automatic Transmission, Air Condition, Radio and Heater, Power Steering, Looks and Runs Great.	\$1495	1974 MAVERICK 2 Door, Automatic Transmission, Radio and Heater, Very Nice.	\$1395

678-3434

RT. 13 SOUTH DUPONT HWY. DOVER, DEL.

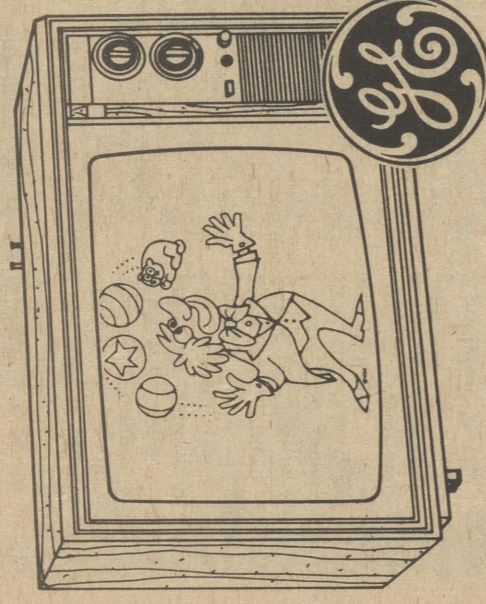
"Delmarva's Largest Datsun Dealer"

# DOVER DATSUN

# Buyer's Guide

Covering News of The Capital Community—  
**DOVER POST**  
with a difference!

A guide to good shopping in the Greater Dover area



100% Solid State  
19" Diagonal  
Color Portable

To be given away — **FREE**

This very fine color television set (can be seen at Lowe's) will be given to the person whose name is picked out at random from among the names left in boxes which shoppers will find at the places of business advertised in this issue of Buyers Guide. Boxes to receive the names will be available only at the places of business advertised in this Buyers Guide. One prize ballot per person can be deposited at each place; no purchase necessary. The winner will be notified by mail and the name of the winner carried in the next issue of Buyers Guide. See that your name is deposited in as many places as possible!

## About this Buyer's Guide

This Buyers Guide to good shopping in the Greater Dover area is published in the interest of bringing the good news of real value and low prices to a wide area. The businesses represented in these pages are reliable and well-established. They know that as a shopper you need to spend your dollars wisely and they have the goods and services to help you do just that.

Besides having a wide selection to choose from, shoppers who visit Dover will find much to make the trip rewarding in other ways. Dover is a charming city; there are many things to do and see. Even those who live in Dover often don't realize all of the city's advantages. As the growing state capital it becomes more attractive year by year.

Come to Dover! It's the mid-peninsula shopping center, and it got that way because it has so much to offer.

## STOCK-UP STEAK SALE



from  
**\$8.65**  
for 13 wks.

3 MONTHS TO PAY  
IF QUALIFIED  
NO INTEREST OR FINANCE  
CHARGES ADDED

**SPECIAL FREE BONUS**  
5 lbs. — PORK  
5 lbs. — SAUSAGE  
5 lbs. — HOT DOGS  
5 lbs. — CHICKENS  
10 lbs. — Free with the purchase of 100 lbs. or best or more.



USDA SELECT  
**CHOICE & PRIME BEEF ORDERS 89¢ to \$1.89 lb.**

Bundle No. 1

**\$8.65** Per Wk. for 13 wks.  
Ex: 150 lbs. at 75 cents lb.  
Total \$112.50

Consisting of:  
CLUB STEAK  
SWISS STEAK  
DELMONICO STEAK  
BAR-B-QUE STEAKS  
RIB STEAKS  
BAR-B-QUE RIBS  
CHUCK ROAST  
POT ROASTS  
GROUND BEEF  
Wts. from 150-200

Bundle No. 2

**\$9.80** Per Wk. for 13 wks.  
Ex: 150 lbs. at 85 cents lb.  
Total \$127.50

Consisting of:  
CLUB STEAK  
RIB STEAK  
DELMONICO STEAK  
BAR-B-QUE STEAK  
RIB STEAKS  
ALSO SMALL AMOUNT OF GROUND BEEF  
Wts. from 150-200

Bundle No. 3

**\$10.26** Per Wk. for 13 wks.  
Ex: 150 at 89 cents lb.  
Total \$133.50

Consisting of:  
T-BONE STEAK  
ROUND STEAK  
PORTERHOUSE STEAK  
SIRLOIN TIP ROAST  
SMALL AMOUNTS GROUND STEAK  
RIB ROASTS  
RUMP ROASTS  
ROUND BEEF  
Wts. from 150-200

# There's shopping and more in Greater Dover

Dover traces its historic Green back to 1693, when William Penn laid it out. It's the heart of the city today.

But there is much more to Dover and environs than the Green which a visitor might find of interest. Even those who visit Dover frequently often pass by buildings or exhibits which they might find very interesting if they only know about them.

The Dover Post BUYERS GUIDE lists the following points of interest in the hope that a visit to any or all of them might make a visit to Delaware's Capital City that much more enjoyable.

**LEGISLATIVE HALL.** Legislative Ave., built in 1933. Houses Legislative and office of Governor and Lt. Governor. Portraits of military heroes and other historical figures on display. Open Monday through Friday, 8 a.m. to 4:30 p.m. Admission free.

**HALL OF RECORDS.** Duke of York St. Public archives of State housed here, including original royal grant from Charles II to James Duke of York (1682). Open Monday through Friday, 8 a.m. to 4:30 p.m. Groups should make advance arrangements by calling 678-4651. Admission free.

**OLD STATE HOUSE AND SUPREME COURT.** The Green. The Old State House is presently under restoration, therefore individuals or groups desiring a tour must contact the Historic Preservation Section in the Hall of Records, 678-4584. Admission Free. Supreme Court Wing through Friday, 8 a.m. to 4:30 p.m. Admission free.

**DELAWARE STATE MUSEUM.** S. Governor's Ave. Exhibits on many phases of Delaware life from Swedish landing to Apollo space suits. Johnson

Building has complete collection of Victor Talking Machine models in store setting. Open Tuesday through Saturday, 10 a.m. to 5 p.m. Sunday, 1 p.m. to 5 p.m. Admission free.

**OLD CHRIST CHURCH.** Water St., built in 1734. Caesar Rodney, a signer of the Declaration of Independence is buried in the churchyard. Open 8 a.m. to 6 p.m. Admission Free.

**THE GREEN** Laid out in accordance with William Penn's order of 1683. Sykes Building, No. 45, built about 1812 by James Sykes, has visitors information. Open Monday through Friday, 8 a.m. to 4:30 p.m.

**KINGS HIGHWAY.** Residence of Governor and Mrs. Sherman W. Tribbitt. Built about 1790. Once a station of the pre-Civil War days underground railroad. Information on hours may be had by contacting the Delaware State Visitors Service, 678-4254. Admission free.

**DUCK CREEK VILLAGE.** off Rt. 13, north of Smyrna. The Lindens, erected 1865, typical of a miller's home of the late Colonial era. Open daily 11 a.m. to 5 p.m. Admission free.

**HOOK NATIONAL WILDLIFE REFUGE.** Rt. 9 north of Leipsic. 15,110-acre haven for migrating and wintering waterfowl. Auto tour routes, observation towers, trails and boardwalk. Open daily to sunset. Office: Monday through Friday, 8 a.m. to 4:30 p.m. Admission free.

**ALLEE HOUSE.** Dutch Neck Road off Rt. 9, east of Smyrna. Built by a member of the Huguenot Allee family about 1733. It is a fine example of a country house of the Queen Anne style with interesting architectural details and excellent workmanship. Both inside and out. Open Saturday and Sunday, 2 p.m. to 5 p.m. Admission free.

**OCTAGONAL SCHOOL HOUSE.** Rt. 9, east of Dover.

Built in 1836, this unique, eight-sided schoolhouse contains a collection of textbooks published from 1800 to 1920 and other artifacts from the early days of the public school system. Open Saturday and Sunday, 1 p.m. to 4 p.m. Admission free.

**JOHN DICKINSON MANSION.** off Rt. 13 on Kitts Hummock Road. The boy-State and Federal holidays. **ISLAND FIELD ARCHAEOLOGICAL MUSEUM.** Bowers Beach. Museum built over prehistoric Indian cemetery. Indian relics. Open April through Memorial Day; weekends from noon to 5 p.m.; Memorial Day to Labor Day, Monday through Friday, noon to 4 p.m.; Saturday and Sunday, noon to 5 p.m.; Labor Day through October weekends noon to 5 p.m. Open all year for tours on weekdays. Closed all State and Federal holidays.

**BARRETT'S CHAPEL.** one mile north of Frederica on

U.S. 113. Erected in 1780, known as "The Cradle of Methodism in America," Here the decision to organize the Methodist Episcopal Church was reached in 1784. Open Tuesday through Saturday, 9:30 a.m. to 4:30 p.m. Sunday, 1 p.m. to 5 p.m.

**THORNE MANSION.** Milford. Built about 1740, once the home of Parson Thorne, Milford's founder, and famous Delaware Statesman, John M. Clayton. Open by appointment only, call 422-9563.

**KILLENS POND STATE PARK.** off U.S. 13, south of Felton. Kent County's only state park. Activities include picnicking, swimming, boating, fishing, sailing, day camping. Primitive youth group camping and organized family group camping is permitted by reservations only. Open April - October. Limited facilities November - March. Park User Fee (daily) Memorial Day - Labor Day. Delawareans \$1 per car. Out-of-state, \$2 per car.



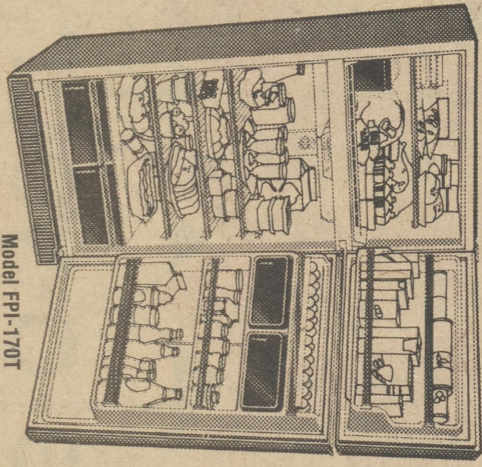
DOVER RECENTLY BEGAN ITS OFFICIAL OBSERVANCE of the Bicentennial Year, with its two most prominent elected citizens participating. In the picture on the left are Gov. and Mrs. Sherman W. Tribbitt, with Secretary of the Treasury William Simon to the right of Mrs. Tribbitt. In the picture to the right is Dover's mayor, Crawford J. Carroll, in Colonial costume for the occasion.



## FRIGIDAIRE DISCOUNT DAYS

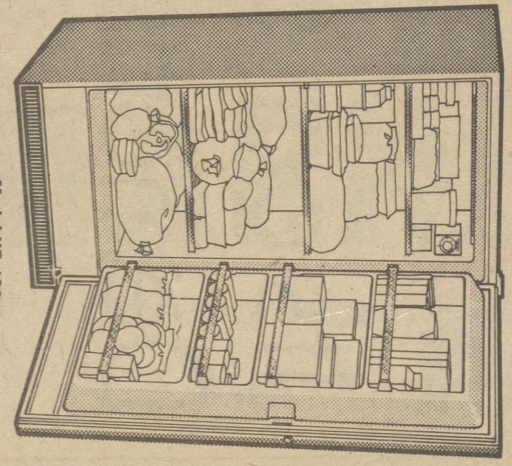
**Frigidaire 100% Frost-Proof Refrigerator-Freezer**

SAVE an additional \$20 with this ad



17.0 cu.ft. of refrigerated volume in all. Big 4.75 cu. ft. freezer compartment.

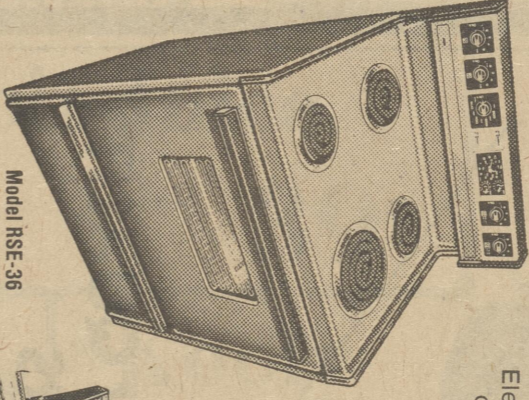
**Frigidaire Upright Freezer**



Just 28" wide yet it offers 12.8 cu. ft. of refrigerated space inside.

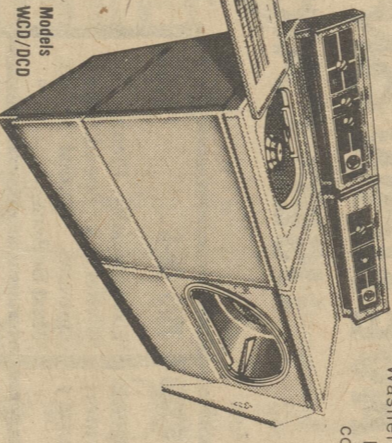
**Frigidaire Range with Electric-Clean Oven**

Save an additional \$20 off our regular low price with this ad



Electric-Clean Oven can clean itself, the oven shelves, even the removable surface unit drip bowls automatically, leaving just a trace of ash to wipe away.

**Frigidaire Heavy Duty Washer and matching Dryer**

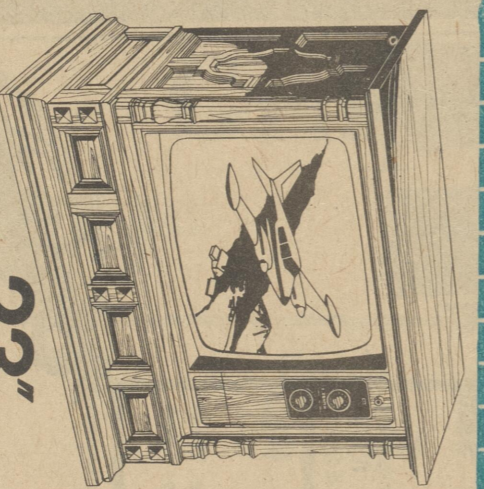


Washer features heavy duty components and Knits cycle. Dryer offers big 18-lb load capacity.

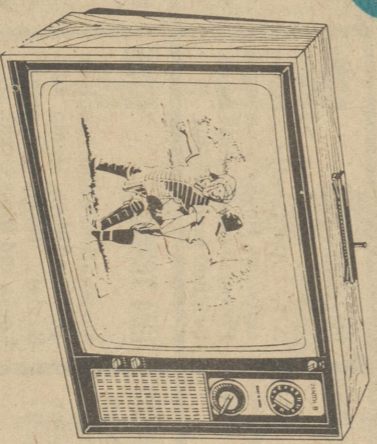
**SAVE SAVE WITH OUR SPECIAL PRICES AND YOU CAN SAVE AN ADDITIONAL \$20 BY BRINGING IN THIS AD**

## ZENITH SUPER SAVINGS

SAVE an additional \$20 with this ad



- Brilliant Chromacolor Picture Tube
- Energy Saving Chassis with Power Sentry System
- Solid-State Tuning System
- Natural Wood Veneer Top
- Decorative Front, Ends and Base of Simulated Wood

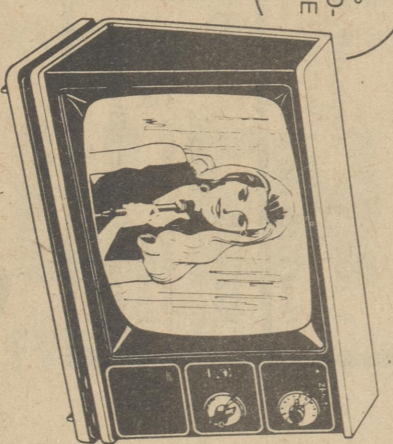


**19" Super Screen Portable Energy Saving Chassis**

The DUNBAR-G2040—100% solid-state chassis with Zenith's Power Sentry cuts TV energy consumption by 64% compared to Zenith's previous all tube chassis. Big screen features, portable convenience. Simulated Walnut finish.



- Big Screen Features
- Small Screen Price
- Energy Saving
- Solid-State Chassis
- Power Sentry Voltage Regulating System
- Brilliant Chromacolor Picture Tube
- Solid-State Tuning System



**12" Personal Size Portable Solid-State Reliability**

The DEBUTANTE-G1350—Dramatic swept back styling in choice of Ebony, Beige or Avocado. Solid-state chassis and tuning with Perma-Set VHF fine tuning, detent UHF tuning. Full Zenith solid-state

**ZENITH** *Allegro*  
**MODULAR STEREO 4 CHANNEL**

**SATISFACTION...THRU QUALITY PRODUCTS AND SERVICE AFTER THE SALE**

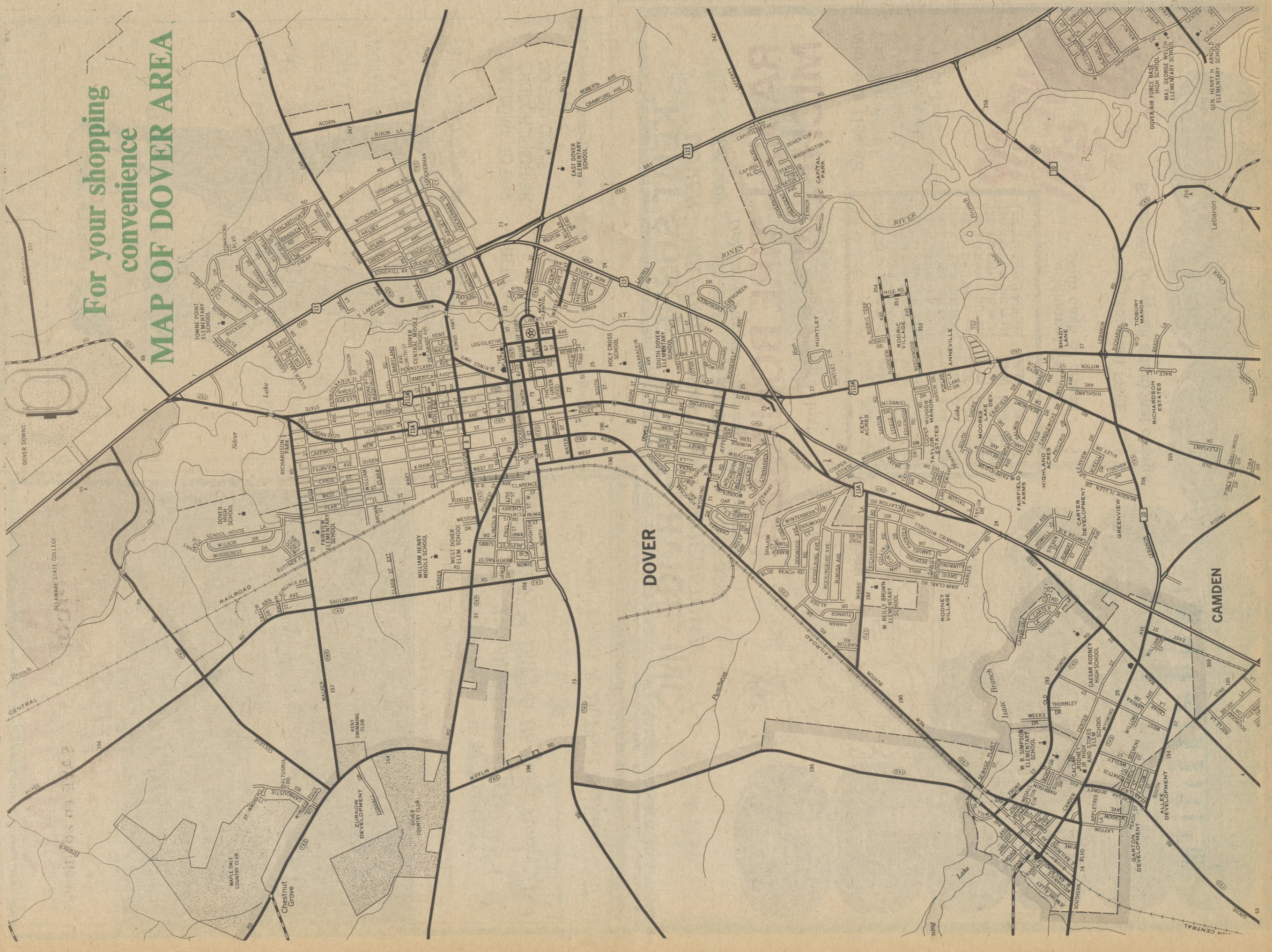
**BOULEVARD ELECTRIC**

32 No. Walnut St. Milford Ph. 422-0116

122 N. Dupont Hwy. Dover Ph. 736-1468

13 N. Main St. Smyrna Ph. 653-9441

For your shopping convenience  
**MAP OF DOVER AREA**



Distinctive  
**Entertainment / Dining**  
 in Greater Dover

*Candlelight Music Theatre*

**DOVER DINNER-THEATRE**  
 Everyone's raving about the Hilarious Musical Comedy  
**STOP THE WORLD - I WANT TO GET OFF**  
 being presented at the  
**RAMADA INN**  
 RT. 13 DOVER, DEL.

Presented by  
**Candlelight Music Theatre**  
 Of Ardentown, Delaware  
**Grand Ramada Buffet & Show**  
 November 14, 16, 23, 30  
 For Reservations Call  
**678-8900**

King of Pizza Presents  
 the New

**EXECUTIVE LOUNGE**

**DISCOTHEQUE**  
 The only Discotheque in Kent County

Tuesday Nite  
 "Belli Dancers"

Open Monday through Sunday  
**RODNEY VILLAGE SHOPPING CENTER**

**DOVERS #1 NITE SPOT**  
 Nite Club  
 Restaurant

Top Bands  
 Play at **gg**

**LIVE ENTERTAINMENT**  
**NITELY**

Partys & Receptions  
 Info Call  
**302-736-6645**  
 S. Gov. Ave.

Luncheon Served Daily  
 Except Monday  
 T.V. Sports Nite

**All New Hub Menu**  
 To our Delicious Steaks ... We have added a

**INTERNATIONAL CUISINE**  
 Monday Night Greek Cuisine  
 Tuesday Night Italian Delights

Complete line of **FRESH SEAFOOD**  
 and a choice of many fresh vegetables

EVERY FRIDAY ALL YOU CAN EAT  
 Our Famous Hub Seafood Buffet  
**\$795**

For Your Lounging Pleasure  
**TOP OF THE HUB**  
**FRIDAY & SATURDAY**  
 7pm till closing  
*Mel Spears at the Piano*  
 "Oldies and Goodies Time"

734-7571

Coming in our lounge Nov. 11 thru Nov. 25  
**"GREGG ARNOLD and CIRCUS"**  
 Live entertainment in our Lounge  
 Tuesday thru Sat.

**RAPPY'S**  
 SHOPPING BREAK

Why not try this  
 Treat yourself to a Break at Budget Prices.

- Hot Sandwiches
- Draft Beer
- Steaks
- PIZZA

DOVER MART  
 U.S. Route 13  
 Dover, Del. 19901  
 302 - 674-1890

What has Sheraton done for you lately?

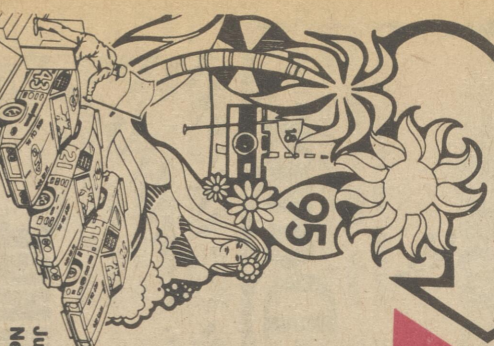
Let us show you the Hospitality of our Mile High Lounge, our Checkered Flag Lounge, and our Sheraton Dining Room for Lunch, Dinner, and Entertainment.

**Sheraton Inn-Dover**  
 SHERATON HOTELS & MOTOR INNS WORLDWIDE  
 1570 NORTH DUPONT HIGHWAY, DOVER, DELAWARE (302) 678-8500

# LOWE'S TOP 10 SALE!

HERE ARE LOWE'S TOP 10 SUPER VALUES, CHOSEN BY MERCHANDISING EXPERTS. PICK THE NUMBER ONE VALUE AND YOU MAY WIN AN EXPENSE PAID TRIP TO THE DAYTONA 500 RACE!

## WIN!



An Expense-Paid Trip For 2 To Daytona Beach, Florida And The Exciting...  
**DAYTONA "500"**  
Stock Car Race!  
Just Register at Your Nearest Lowe's Store!

**BRUCE**  
OAK FLOORING WITH TROWEL AND ADHESIVE  
#00460,1,4  
18 sq. Ft.  
**\$2497**

**BARROW**  
10' x 10' STEEL STORAGE BUILDING  
By Chromalloy  
#27294  
**\$13900**

**ARMSTRONG**  
12 FT. WIDE "CASTILLAN" VINYL FLOORING  
#16228  
30 yd.  
**\$349**

**7000**  
ALL MATERIALS FOR CONCRETE FIRST FLOOR FROM THE FOUNDATION PLATE UP  
#12316  
**\$10,976**

**5 INCH**  
UN-FACED FIBERGLASS INSULATION  
#12382  
16c sq. ft.  
**\$16900**

**CAST IRON**  
FRANKLIN FIREPLACE  
#37250  
Health Care  
**\$16900**

**TOUCH DOWN**  
ALUMINUM FRAME STORM WINDOWS  
#13046  
**\$998**

**21 3/4" x 1 8/8"**  
SPACE SAVER VANITY WITH FAUCET  
#20195  
**\$7997**

**33" x 22"**  
STAINLESS STEEL SINK  
#26025  
**\$2499**

**66" BIRCH WALL & SINK**  
CABINET W/COUNTERTOP  
#26012,3  
**\$15997**

**2" x 2" Multi-Purpose Lumber**  
Made from yellow or white pine, this lumber is ideal for many fence and home projects. Paints or stains well. #04160  
**9c** L.F.T.  
**4" x 4" x 8' Fir Or Hemlock Posts**  
These posts are of tough Western Hemlock or Fir, both of which offer strength, stiffness, and dimensional stability. 8 ft. lengths. #04001  
**\$499** EA.  
**2" x 4" Dale Bunyan Studs**  
A general purpose piece of wood for use where building codes do not apply. Use for shelving... plant stakes... dog houses... anything! #07002  
**69c** EA.

**SQUARE**  
#89842  
**HANDSAW**  
#89810  
**CLAW HAMMER**  
#89857  
**\$399**  
**\$399**  
**\$299**

**Sundown 4' x 8' Paneling**  
The richly elegant look of deep western oak. Each panel is 3mm. thick and has a simulated woodgrain on luan plywood. #12174  
**\$469**  
SAVE \$1.00  
**\$599**  
REG. \$6.99

**Celtex**  
240 Lb. Seal-Down Asphalt Roofing Shingles  
These traditional design shingles have a felt base... an asphalt, water resistant base... a stabilizing asphalt coating... embedded in the coating. The shingles also have a "wide intermittent strips of factory-applied, thermoplastic adhesive across their faces. Once the shingles are in place on the roof, the sun's heat softens the adhesive, fusing each shingle tab to the underlying shingle, giving you a solid, 1-piece roof, impervious to wind or water. #10147  
**\$1688** SQUARE

**Glacier Gold**  
Glacier Gold gives a light, bright effect of sunlight. Each panel measures 4' x 8', 5/32" thick with simulated woodgrain on plywood. #12179  
**\$599**  
SAVE \$1.50  
**\$649**  
REG. \$7.99

**Sportsman's Birch**  
A natural, outdoorsy paneling that's ideal for deck, room, 4' x 8', 1/4" thick simulated woodgrain on luan plywood. #12316  
**\$649**

**1/2 CDX SHEATHING PLYWOOD**  
This is the ideal plywood for roof walls and roof sheathing. Gives a roofing base for bracing the building... insulates. #12182  
**\$566**

**15 LB. BUILDERS' FELT**  
This asphalt saturated felt is applied over the roof decking... roof sheathing... shingles are applied. Weighs 60 lbs. and covers 4 #1006  
**\$799**

**ASPHALT PLASTIC CEMENT**  
A heavy-bodied asphalt based cement, reinforced with polyester fibers. For use on roof membranes... film that lasts for years. #10520  
**\$169**

**10" x 50' ALUMINUM ROLL VALLEY**  
This roof valley of aluminum is used to help rain or other moisture drain from roof planes of a roof cover. #12321  
**\$759**

**GALVANIZED ROOFING NAILS 1 1/4"**  
These nails have a large head and regular diamond point. Bars in solid zinc give more than twice the smooth shank. #12045  
**55c** LB.

**8" x 100' PLASTIC FILM**  
Strong... won't rot... resists mold, chemicals, water, and to protect shrubs... as drop cloth. #16904  
**\$997**

**Three Convenient Ways To Charge Your Purchases At Lowe's!**

**LOWE'S**  
CONSUMER INFORMATION  
Dover, Del. 1165 N. DuPont Highway  
Phone: 724-7544  
Store Hours: Mon.-Thurs. 8 a.m.-5:30 p.m. Fri. & Sat. 8 a.m.-9 p.m. Sat. 8 a.m.-4 p.m.

**LOWE'S**  
KENT SUSSEX TIRE SERVICE, INC.  
DOVER -- MILFORD -- SEAFORD -- GEORGETOWN  
678-9002 422-3337 629-6055 856-3886  
"Delmarva Fastest Growing Tire Company"

**RADIAL TIRE BONANZA!**  
MICHELIN "the World's Best"

**With this Tire Ad You Can Save Up To \$60 on a Set of Four Tires**

Reg.	Tax	Sale	
165 X 13 XWV (AR-78-13)	54.89	1.81	44.89
175 X 13 XWV (DR-78-13)	58.60	2.10	52.60
185 X 14 XWV (BR-78-14)	62.10	2.29	56.92
195 X 14 XWV (ER-78-14)	66.92	2.53	61.49
205 X 14 XWV (FR-78-14)	71.26	2.89	67.49
215 X 14 XWV (GR-78-14)	79.49	3.11	74.64
185 X 15 HED WALL	86.64	2.34	59.24
195 X 15 XWV (FR-78-15)	71.24	2.68	65.33
205 X 15 XWV (GR-78-15)	77.33	2.97	72.22
215 X 15 XWV (HR-78-15)	84.22	3.16	77.65
225 X 15 XWV (LR-78-15)	89.65	3.29	81.47

**additional 5% off with cash or check**

**Tires Mounted FREE**

Balancing for small additional charge

**SAVE UP TO \$60 ON THIS AD**

**WELCOME TO OUR CHURCH, BROTHER. DO YOU COME OFTEN ?**

**"RELIGIOUSLY !"**

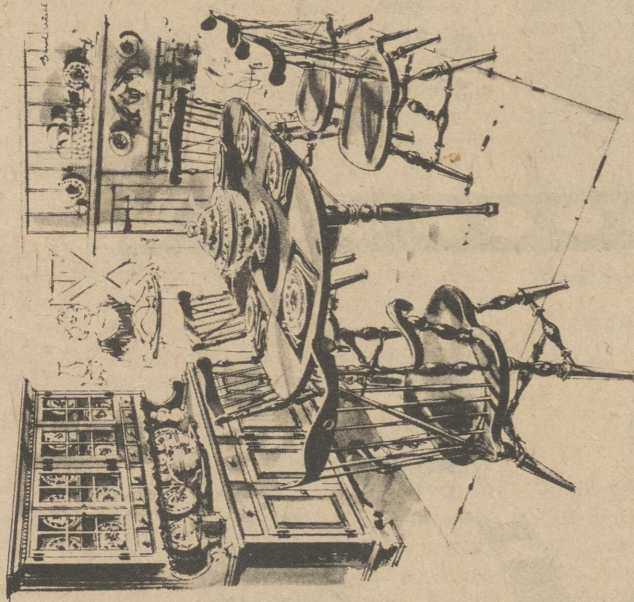
**HAMMOND Cadillac**

**Sales Representatives**  
Bob Carr Fred Townsend Bernie Feistenstein  
**Service Manager** Ralph Watkins  
Telephone 678-3141  
Rt. 13 1041 S. DuPont Highway Dover, Del.  
&  
N.W. Front & DuPont Highway  
Miford Delaware



## There's no place like home for the holidays!

Let our Ethan Allen Gallery help you make your home as inviting as the holidays themselves.



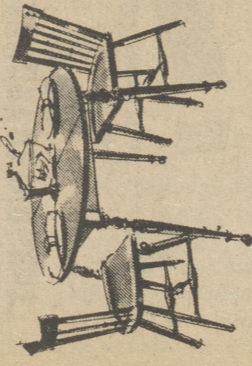
Welcome the holidays with the casual country look of these fine furnishings in warm, mellow Old Tavern finish. You'll feel at home in this relaxed setting that lends itself happily to both informal family gatherings and "company best" dinners.

Spoonfoot oval extension table and four scroll back Duxbury chairs. Reg. \$697.50... Now \$599.50

Scroll back arm chair. Reg. \$89.50 ea. .... Now \$77.50 ea.

Four drawer buffet and matching china cabinet. Reg. \$829.00... Now \$699.50

For gracious dining that takes little space, choose this Heriloom dinette... finished in warm, glowing Nutmeg and styled for today's living. A perfect size for a small family, the table extends for company... and a Formica® plastic top means worry free serving.



Round extension table and 2 square chairs. Reg. \$357.50... Now \$299.50

Howard's

Carriage House



**Ethan Allen Gallery**  
We can help you have the home you want.

U.S. Rt. 13 & Roosevelt Ave. Dover, Del.  
Ph. 678-2168 Open Daily 9 A.M. to 5:30 P.M.  
Thurs. & Fri. till 9 P.M.

## MEMO TO ADVERTISERS:

# Buyer's Guide

Published monthly in the interest of supplying complete and one-insertion coverage of the entire Dover marketing area, bringing to families of the mid-peninsula shopping information on the goods and services offered by progressive Dover businesses. For more information, call 678-3616.

# LOWE'S TOP 10 SALE!

HERE ARE LOWE'S TOP 10 SUPERVALUES CHOSEN BY MERCHANDISING EXPERTS. PICK THE NUMBER ONE VALUE AND YOU MAY WIN AN EXPENSE PAID TRIP TO THE DAYTONA 500 RACE.

**WIN!**  
An Expense-Paid Trip For 2 To Daytona Beach, Florida And The Exciting...  
**DAYTONA "500"**  
Stock Car Race!  
Just Register at Your Nearest Lowe's Store!

**ARROW**  
By Chromalloy  
10' x 10' STEEL STORAGE BUILDING  
#92754  
**\$139.00**

**Armstrong**  
12 FT. WIDE "CASTILIAN" VINYL FLOORING  
#16228  
**\$3.49** sq. yd.

**McC Hattaras**  
ALL MATERIALS TO COMPLETE FIRST FLOOR FROM THIS HOME FOUNDATION PLATE UP  
**\$10,976**

**6 INCH UN-FACED FIBERGLASS INSULATION**  
#12582  
**16¢** sq. ft.

**Contest Rules:**  
Feeling lucky? Take a good look at the 10 items above. All — including the one best value — have been carefully selected by merchandise experts. Select the item that interests you most. Write your name on an entry blank available at all Lowe's stores. Contest is open to anyone 18 years of age or older, who is not a Lowe's employee. Contest ends Nov. 30. Selected the best value will be eligible for a final drawing to determine the winner. No purchase is required and you do not have to be present to win. Contest is open to residents of the United States & Canada. Sponsored by North Wilkesboro, N.C.

**18' x 17' WHITE LAVATORY & WATER CLOSET**  
#20050, 321-2  
**\$39.97**

**19" DIAGONAL SOLID STATE COLOR**  
#54521  
**\$359.00**

**10 INCH SAW AND CARRY CASE**  
#91620  
**\$99.00**

**TOUCH DOWN ALUMINUM FRAME STORM WINDOWS**  
#13046  
**\$9.88**

**CAST IRON FRANKLIN FIREPLACE**  
#37250  
Hearth Craft  
**\$169.00**

**ZENITH**  
100% Solid State 23" Diagonal Color Console  
This beautiful piece of furniture features elegant Mediterranean styling with its full base console hiding easy-glide casters. Inside the cabinet, you'll find a 100% solid state chassis that conserves energy and saves you money... a Chromacolor picture tube that delivers life-like colors and bright, crisp pictures... the Power Sentry voltage regulating system... Solid state super video range tuning system... Automatic Color Clarifier... 5" round speaker... deluxe spotlight panels... and 2 antennas. #54841  
**\$599.76**

**12" DIAGONAL BLACK AND WHITE PORTABLE**  
Features a power consumption of only 110 watts... a high impact polystyrene cabinet... solid state UHF tuner and up-front controls. #54460  
**\$79.92**

**100% Solid State 19" Diagonal Color Portable**  
This color portable features a 100% solid state "Energy Saver" chassis that consumes less energy than comparable tube sets... the black matrix Spectra-Brite® IV picture tube for bright, sharp color pictures... Automatic Fine Tuning Control... Custom Picture Control... Automatic Color Control that maintains color intensity from program to program... 70 position "click-in" UHF tuning for the same convenience you enjoy in selecting VHF channels... Insta-Color® Circuit... 2 antennas. #54521  
**\$359.76**

**PERMANENT PRESS 2-SPEED WASHER**  
Heavy-duty transmission... 3 energy-saving water temperature selections... pump guard to trap small items... safety lid. #51355  
**\$249.96**

**PERMANENT PRESS AUTOMATIC DRYER**  
One-dial convenience... 4,400 watts of power... 3 drying cycles... extra-large lint screen... built-in thermostat. #51487  
**\$169.73**

**Lowe's Gives You 3 Ways To Charge!...**

**COMPLETE STEREO SYSTEM**  
AM/FM stereo receiver with 8-track player... cart. #54270  
**\$149.91**

**AM-FM 8-TRACK IN-DASH CAR STEREO SYSTEM**  
MPX stereo indicator beacon... AM-FM slide bar selector... channel button. #55122  
**\$69.97**

**MICROWAVE OVEN/RANGE**  
A complete meal in 1/4 the traditional time. #51741  
**\$349.86**

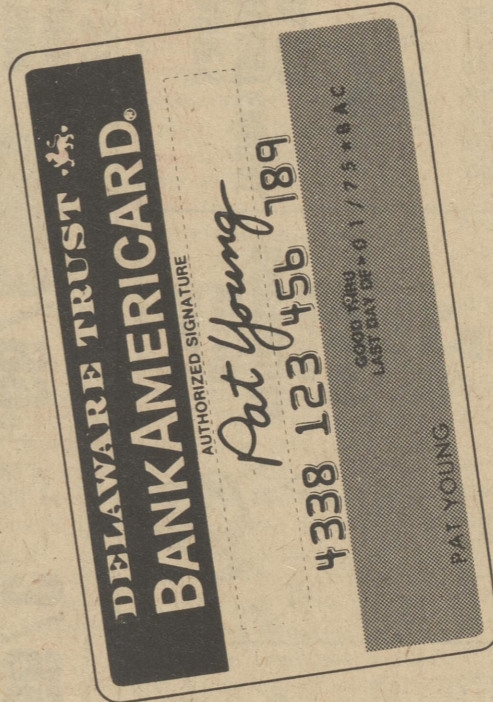
**100% SOLID STATE 19" DIAGONAL BLACK & WHITE**  
Voltage stabilizers... 20" automatic tube tuning. #54490  
**\$139.87**

**100% SOLID STATE 13" DIAGONAL COLOR**  
Only 37 1/2 lbs., but in-line automatic tube tuning. #54515  
**\$289.76**

1165 N. DuPont Highway  
Dover, Del. Phone 734-7544  
Store Hours: Mon.-Thurs. 8 a.m.-5:30 p.m.  
Fri. 8 a.m.-9 p.m.-Sat. 8 a.m.-4 p.m.

# LOWE'S

## Delaware's only 24-HOUR BankAmericard



... the only card you really need for credit, travel, 24-hour banking, instant cash, instant loans, overdraft protection, identification and check guarantee. Sign up for yours today so you'll be ready for the next big sale!

## DELAWARE TRUST

'bank where people make the difference'

## Battening down?



### For All Your Home Repair & Remodeling Needs

Battening down to seal out the cold; save energy? Get advice from us. It can save you a host of frustrations and bruised knuckles... as well as money. We are specialists in many things. Home construction. Remodeling. Building materials and hardware. Pre-fabrication. Land development. Even financing. Whether you are just "buying a board," or repairing... or planning an addition to your home—there is a wealth of knowledge and service available from us.

## U.L. Harman Inc.

(Md.) 482-8181  
1210 S. Governors Ave  
Dover Del. 734-5883  
Main St. Maryland Del. 492-3456

# Woolco

## 4 BIG DAYS! BIG DISCOUNT SALE

THURSDAY  
FRIDAY  
SATURDAY  
SUNDAY

# Woolco

**AXAX DISHWASHING LIQUID**  
88¢  
Large 32 oz. unbreakable bottle.

**BLACK & DECKER SAW**  
\$1688  
Reg. 29.97  
7" cut blade. Includes: 1400 RPM motor, 7" cut blade, 1" diameter blade, 1" diameter blade.

**AQUA NET HAIR SPRAY**  
3/99¢  
Limit 3  
By Revere. The professional hair spray in 13 scents. Includes: 3.33 oz. spray bottle, 1.66 oz. spray bottle.

**FLUORESCENT SHOP LIGHT**  
\$1088  
Limit 1  
Sturdy, steel with baked enamel finish. Comes with 4 fluorescent tubes. Available in black or brown. Easy to clean.

**10 GAL. AQUARIUM KIT**  
\$988  
Reg. 14.97  
Kit, complete with filter, tubing, thermostat, heater, and more. Save today!

USE THE WOOLCO CONVENIENT LAYAWAY PLAN!!



**MEN'S DOUBLE KNIT SPORT COATS**  
\$20.  
Sold everyday at \$39.99  
Wrinkle resistant polyester in solid colors. Patterns. Prices: \$8.49, \$9.49, \$10.49, \$11.49, \$12.49, \$13.49, \$14.49, \$15.49, \$16.49, \$17.49, \$18.49, \$19.49, \$20.49, \$21.49, \$22.49, \$23.49, \$24.49, \$25.49, \$26.49, \$27.49, \$28.49, \$29.49, \$30.49, \$31.49, \$32.49, \$33.49, \$34.49, \$35.49, \$36.49, \$37.49, \$38.49, \$39.49, \$40.49, \$41.49, \$42.49, \$43.49, \$44.49, \$45.49, \$46.49, \$47.49, \$48.49, \$49.49, \$50.49, \$51.49, \$52.49, \$53.49, \$54.49, \$55.49, \$56.49, \$57.49, \$58.49, \$59.49, \$60.49, \$61.49, \$62.49, \$63.49, \$64.49, \$65.49, \$66.49, \$67.49, \$68.49, \$69.49, \$70.49, \$71.49, \$72.49, \$73.49, \$74.49, \$75.49, \$76.49, \$77.49, \$78.49, \$79.49, \$80.49, \$81.49, \$82.49, \$83.49, \$84.49, \$85.49, \$86.49, \$87.49, \$88.49, \$89.49, \$90.49, \$91.49, \$92.49, \$93.49, \$94.49, \$95.49, \$96.49, \$97.49, \$98.49, \$99.49, \$100.49, \$101.49, \$102.49, \$103.49, \$104.49, \$105.49, \$106.49, \$107.49, \$108.49, \$109.49, \$110.49, \$111.49, \$112.49, \$113.49, \$114.49, \$115.49, \$116.49, \$117.49, \$118.49, \$119.49, \$120.49, \$121.49, \$122.49, \$123.49, \$124.49, \$125.49, \$126.49, \$127.49, \$128.49, \$129.49, \$130.49, \$131.49, \$132.49, \$133.49, \$134.49, \$135.49, \$136.49, \$137.49, \$138.49, \$139.49, \$140.49, \$141.49, \$142.49, \$143.49, \$144.49, \$145.49, \$146.49, \$147.49, \$148.49, \$149.49, \$150.49, \$151.49, \$152.49, \$153.49, \$154.49, \$155.49, \$156.49, \$157.49, \$158.49, \$159.49, \$160.49, \$161.49, \$162.49, \$163.49, \$164.49, \$165.49, \$166.49, \$167.49, \$168.49, \$169.49, \$170.49, \$171.49, \$172.49, \$173.49, \$174.49, \$175.49, \$176.49, \$177.49, \$178.49, \$179.49, \$180.49, \$181.49, \$182.49, \$183.49, \$184.49, \$185.49, \$186.49, \$187.49, \$188.49, \$189.49, \$190.49, \$191.49, \$192.49, \$193.49, \$194.49, \$195.49, \$196.49, \$197.49, \$198.49, \$199.49, \$200.49, \$201.49, \$202.49, \$203.49, \$204.49, \$205.49, \$206.49, \$207.49, \$208.49, \$209.49, \$210.49, \$211.49, \$212.49, \$213.49, \$214.49, \$215.49, \$216.49, \$217.49, \$218.49, \$219.49, \$220.49, \$221.49, \$222.49, \$223.49, \$224.49, \$225.49, \$226.49, \$227.49, \$228.49, \$229.49, \$230.49, \$231.49, \$232.49, \$233.49, \$234.49, \$235.49, \$236.49, \$237.49, \$238.49, \$239.49, \$240.49, \$241.49, \$242.49, \$243.49, \$244.49, \$245.49, \$246.49, \$247.49, \$248.49, \$249.49, \$250.49, \$251.49, \$252.49, \$253.49, \$254.49, \$255.49, \$256.49, \$257.49, \$258.49, \$259.49, \$260.49, \$261.49, \$262.49, \$263.49, \$264.49, \$265.49, \$266.49, \$267.49, \$268.49, \$269.49, \$270.49, \$271.49, \$272.49, \$273.49, \$274.49, \$275.49, \$276.49, \$277.49, \$278.49, \$279.49, \$280.49, \$281.49, \$282.49, \$283.49, \$284.49, \$285.49, \$286.49, \$287.49, \$288.49, \$289.49, \$290.49, \$291.49, \$292.49, \$293.49, \$294.49, \$295.49, \$296.49, \$297.49, \$298.49, \$299.49, \$300.49, \$301.49, \$302.49, \$303.49, \$304.49, \$305.49, \$306.49, \$307.49, \$308.49, \$309.49, \$310.49, \$311.49, \$312.49, \$313.49, \$314.49, \$315.49, \$316.49, \$317.49, \$318.49, \$319.49, \$320.49, \$321.49, \$322.49, \$323.49, \$324.49, \$325.49, \$326.49, \$327.49, \$328.49, \$329.49, \$330.49, \$331.49, \$332.49, \$333.49, \$334.49, \$335.49, \$336.49, \$337.49, \$338.49, \$339.49, \$340.49, \$341.49, \$342.49, \$343.49, \$344.49, \$345.49, \$346.49, \$347.49, \$348.49, \$349.49, \$350.49, \$351.49, \$352.49, \$353.49, \$354.49, \$355.49, \$356.49, \$357.49, \$358.49, \$359.49, \$360.49, \$361.49, \$362.49, \$363.49, \$364.49, \$365.49, \$366.49, \$367.49, \$368.49, \$369.49, \$370.49, \$371.49, \$372.49, \$373.49, \$374.49, \$375.49, \$376.49, \$377.49, \$378.49, \$379.49, \$380.49, \$381.49, \$382.49, \$383.49, \$384.49, \$385.49, \$386.49, \$387.49, \$388.49, \$389.49, \$390.49, \$391.49, \$392.49, \$393.49, \$394.49, \$395.49, \$396.49, \$397.49, \$398.49, \$399.49, \$400.49, \$401.49, \$402.49, \$403.49, \$404.49, \$405.49, \$406.49, \$407.49, \$408.49, \$409.49, \$410.49, \$411.49, \$412.49, \$413.49, \$414.49, \$415.49, \$416.49, \$417.49, \$418.49, \$419.49, \$420.49, \$421.49, \$422.49, \$423.49, \$424.49, \$425.49, \$426.49, \$427.49, \$428.49, \$429.49, \$430.49, \$431.49, \$432.49, \$433.49, \$434.49, \$435.49, \$436.49, \$437.49, \$438.49, \$439.49, \$440.49, \$441.49, \$442.49, \$443.49, \$444.49, \$445.49, \$446.49, \$447.49, \$448.49, \$449.49, \$450.49, \$451.49, \$452.49, \$453.49, \$454.49, \$455.49, \$456.49, \$457.49, \$458.49, \$459.49, \$460.49, \$461.49, \$462.49, \$463.49, \$464.49, \$465.49, \$466.49, \$467.49, \$468.49, \$469.49, \$470.49, \$471.49, \$472.49, \$473.49, \$474.49, \$475.49, \$476.49, \$477.49, \$478.49, \$479.49, \$480.49, \$481.49, \$482.49, \$483.49, \$484.49, \$485.49, \$486.49, \$487.49, \$488.49, \$489.49, \$490.49, \$491.49, \$492.49, \$493.49, \$494.49, \$495.49, \$496.49, \$497.49, \$498.49, \$499.49, \$500.49, \$501.49, \$502.49, \$503.49, \$504.49, \$505.49, \$506.49, \$507.49, \$508.49, \$509.49, \$510.49, \$511.49, \$512.49, \$513.49, \$514.49, \$515.49, \$516.49, \$517.49, \$518.49, \$519.49, \$520.49, \$521.49, \$522.49, \$523.49, \$524.49, \$525.49, \$526.49, \$527.49, \$528.49, \$529.49, \$530.49, \$531.49, \$532.49, \$533.49, \$534.49, \$535.49, \$536.49, \$537.49, \$538.49, \$539.49, \$540.49, \$541.49, \$542.49, \$543.49, \$544.49, \$545.49, \$546.49, \$547.49, \$548.49, \$549.49, \$550.49, \$551.49, \$552.49, \$553.49, \$554.49, \$555.49, \$556.49, \$557.49, \$558.49, \$559.49, \$560.49, \$561.49, \$562.49, \$563.49, \$564.49, \$565.49, \$566.49, \$567.49, \$568.49, \$569.49, \$570.49, \$571.49, \$572.49, \$573.49, \$574.49, \$575.49, \$576.49, \$577.49, \$578.49, \$579.49, \$580.49, \$581.49, \$582.49, \$583.49, \$584.49, \$585.49, \$586.49, \$587.49, \$588.49, \$589.49, \$590.49, \$591.49, \$592.49, \$593.49, \$594.49, \$595.49, \$596.49, \$597.49, \$598.49, \$599.49, \$600.49, \$601.49, \$602.49, \$603.49, \$604.49, \$605.49, \$606.49, \$607.49, \$608.49, \$609.49, \$610.49, \$611.49, \$612.49, \$613.49, \$614.49, \$615.49, \$616.49, \$617.49, \$618.49, \$619.49, \$620.49, \$621.49, \$622.49, \$623.49, \$624.49, \$625.49, \$626.49, \$627.49, \$628.49, \$629.49, \$630.49, \$631.49, \$632.49, \$633.49, \$634.49, \$635.49, \$636.49, \$637.49, \$638.49, \$639.49, \$640.49, \$641.49, \$642.49, \$643.49, \$644.49, \$645.49, \$646.49, \$647.49, \$648.49, \$649.49, \$650.49, \$651.49, \$652.49, \$653.49, \$654.49, \$655.49, \$656.49, \$657.49, \$658.49, \$659.49, \$660.49, \$661.49, \$662.49, \$663.49, \$664.49, \$665.49, \$666.49, \$667.49, \$668.49, \$669.49, \$670.49, \$671.49, \$672.49, \$673.49, \$674.49, \$675.49, \$676.49, \$677.49, \$678.49, \$679.49, \$680.49, \$681.49, \$682.49, \$683.49, \$684.49, \$685.49, \$686.49, \$687.49, \$688.49, \$689.49, \$690.49, \$691.49, \$692.49, \$693.49, \$694.49, \$695.49, \$696.49, \$697.49, \$698.49, \$699.49, \$700.49, \$701.49, \$702.49, \$703.49, \$704.49, \$705.49, \$706.49, \$707.49, \$708.49, \$709.49, \$710.49, \$711.49, \$712.49, \$713.49, \$714.49, \$715.49, \$716.49, \$717.49, \$718.49, \$719.49, \$720.49, \$721.49, \$722.49, \$723.49, \$724.49, \$725.49, \$726.49, \$727.49, \$728.49, \$729.49, \$730.49, \$731.49, \$732.49, \$733.49, \$734.49, \$735.49, \$736.49, \$737.49, \$738.49, \$739.49, \$740.49, \$741.49, \$742.49, \$743.49, \$744.49, \$745.49, \$746.49, \$747.49, \$748.49, \$749.49, \$750.49, \$751.49, \$752.49, \$753.49, \$754.49, \$755.49, \$756.49, \$757.49, \$758.49, \$759.49, \$760.49, \$761.49, \$762.49, \$763.49, \$764.49, \$765.49, \$766.49, \$767.49, \$768.49, \$769.49, \$770.49, \$771.49, \$772.49, \$773.49, \$774.49, \$775.49, \$776.49, \$777.49, \$778.49, \$779.49, \$780.49, \$781.49, \$782.49, \$783.49, \$784.49, \$785.49, \$786.49, \$787.49, \$788.49, \$789.49, \$790.49, \$791.49, \$792.49, \$793.49, \$794.49, \$795.49, \$796.49, \$797.49, \$798.49, \$799.49, \$800.49, \$801.49, \$802.49, \$803.49, \$804.49, \$805.49, \$806.49, \$807.49, \$808.49, \$809.49, \$810.49, \$811.49, \$812.49, \$813.49, \$814.49, \$815.49, \$816.49, \$817.49, \$818.49, \$819.49, \$820.49, \$821.49, \$822.49, \$823.49, \$824.49, \$825.49, \$826.49, \$827.49, \$828.49, \$829.49, \$830.49, \$831.49, \$832.49, \$833.49, \$834.49, \$835.49, \$836.49, \$837.49, \$838.49, \$839.49, \$840.49, \$841.49, \$842.49, \$843.49, \$844.49, \$845.49, \$846.49, \$847.49, \$848.49, \$849.49, \$850.49, \$851.49, \$852.49, \$853.49, \$854.49, \$855.49, \$856.49, \$857.49, \$858.49, \$859.49, \$860.49, \$861.49, \$862.49, \$863.49, \$864.49, \$865.49, \$866.49, \$867.49, \$868.49, \$869.49, \$870.49, \$871.49, \$872.49, \$873.49, \$874.49, \$875.49, \$876.49, \$877.49, \$878.49, \$879.49, \$880.49, \$881.49, \$882.49, \$883.49, \$884.49, \$885.49, \$886.49, \$887.49, \$888.49, \$889.49, \$890.49, \$891.49, \$892.49, \$893.49, \$894.49, \$895.49, \$896.49, \$897.49, \$898.49, \$899.49, \$900.49, \$901.49, \$902.49, \$903.49, \$904.49, \$905.49, \$906.49, \$907.49, \$908.49, \$909.49, \$910.49, \$911.49, \$912.49, \$913.49, \$914.49, \$915.49, \$916.49, \$917.49, \$918.49, \$919.49, \$920.49, \$921.49, \$922.49, \$923.49, \$924.49, \$925.49, \$926.49, \$927.49, \$928.49, \$929.49, \$930.49, \$931.49, \$932.49, \$933.49, \$934.49, \$935.49, \$936.49, \$937.49, \$938.49, \$939.49, \$940.49, \$941.49, \$942.49, \$943.49, \$944.49, \$945.49, \$946.49, \$947.49, \$948.49, \$949.49, \$950.49, \$951.49, \$952.49, \$953.49, \$954.49, \$955.49, \$956.49, \$957.49, \$958.49, \$959.49, \$960.49, \$961.49, \$962.49, \$963.49, \$964.49, \$965.49, \$966.49, \$967.49, \$968.49, \$969.49, \$970.49, \$971.49, \$972.49, \$973.49, \$974.49, \$975.49, \$976.49, \$977.49, \$978.49, \$979.49, \$980.49, \$981.49, \$982.49, \$983.49, \$984.49, \$985.49, \$986.49, \$987.49, \$988.49, \$989.49, \$990.49, \$991.49, \$992.49, \$993.49, \$994.49, \$995.49, \$996.49, \$997.49, \$998.49, \$999.49, \$1000.49, \$1001.49, \$1002.49, \$1003.49, \$1004.49, \$1005.49, \$1006.49, \$1007.49, \$1008.49, \$1009.49, \$1010.49, \$1011.49, \$1012.49, \$1013.49, \$1014.49, \$1015.49, \$1016.49, \$1017.49, \$1018.49, \$1019.49, \$1020.49, \$1021.49, \$1022.49, \$1023.49, \$1024.49, \$1025.49, \$1026.49, \$1027.49, \$1028.49, \$1029.49, \$1030.49, \$1031.49, \$1032.49, \$1033.49, \$1034.49, \$1035.49, \$1036.49, \$1037.49, \$1038.49, \$1039.49, \$1040.49, \$1041.49, \$1042.49, \$1043.49, \$1044.49, \$1045.49, \$1046.49, \$1047.49, \$1048.49, \$1049.49, \$1050.49, \$1051.49, \$1052.49, \$1053.49, \$1054.49, \$1055.49, \$1056.49, \$1057.49, \$1058.49, \$1059.49, \$1060.49, \$1061.49, \$1062.49, \$1063.49, \$1064.49, \$1065.49, \$1066.49, \$1067.49, \$1068.49, \$1069.49, \$1070.49, \$1071.49, \$1072.49, \$1073.49, \$1074.49, \$1075.49, \$1076.49, \$1077.49, \$1078.49, \$1079.49, \$1080.49, \$1081.49, \$1082.49, \$1083.49, \$1084.49, \$1085.49, \$1086.49, \$1087.49, \$1088.49, \$1089.49, \$1090.49, \$1091.49, \$1092.49, \$1093.49, \$1094.49, \$1095.49, \$1096.49, \$1097.49, \$1098.49, \$1099.49, \$1100.49, \$1101.49, \$1102.49, \$1103.49, \$1104.49, \$1105.49, \$1106.49, \$1107.49, \$1108.49, \$1109.49, \$1110.49, \$1111.49, \$1112.49, \$1113.49, \$1114.49, \$1115.49, \$1116.49, \$1117.49, \$1118.49, \$1119.49, \$1120.49, \$1121.49, \$1122.49, \$1123.49, \$1124.49, \$1125.49, \$1126.49, \$1127.49, \$1128.49, \$1129.49, \$1130.49, \$1131.49, \$1132.49, \$1133.49, \$1134.49, \$1135.49, \$1136.49, \$1137.49, \$1138.49, \$1139.49, \$1140.49, \$1141.49, \$1142.49, \$1143.49, \$1144.49, \$1145.49, \$1146.49, \$1147.49, \$1148.49, \$1149.49, \$1150.49, \$1151.49, \$1152.49, \$1153.49, \$1154.49, \$1155.49, \$1156.49, \$1157.49, \$1158.49, \$1159.49, \$1160.49, \$1161.49, \$1162.49, \$1163.49, \$1164.49, \$1165.49, \$1166.49, \$1167.49, \$1168.49, \$1169.49, \$1170.49, \$1171.49, \$1172.49, \$1173.49, \$1174.49, \$1175.49, \$1176.49, \$1177.49, \$1178.49, \$1179.49, \$1180.49, \$1181.49, \$1182.49, \$1183.49, \$1184.49, \$1185.49, \$1186.49, \$1187.49, \$1188.49, \$1189.49, \$1190.49, \$1191.49, \$1192.49, \$1193.49, \$1194.49, \$1195.49, \$1196.49, \$1197.49, \$1198.49, \$1199.49, \$1200.49, \$1201.49, \$1202.49, \$1203.49, \$1204.49, \$1205.49, \$1206.49, \$1207.49, \$1208.49, \$1209.49, \$1210.49, \$1211.49, \$1212.49, \$1213.49, \$1214.49, \$1215.49, \$1216.49, \$1217.49, \$1218.49, \$1219.49, \$1220.49, \$1221.49, \$1222.49, \$1223.49, \$1224.49, \$1225.49, \$1226.49, \$1227.49, \$1228.49, \$1229.49, \$1230.49, \$1231.49, \$1232.49, \$1233.49, \$1234.49, \$1235.49, \$1236.49, \$1237.49, \$1238.49, \$1239.49, \$1240.49, \$1241.49, \$1242.49, \$1243.49, \$1244.49, \$1245.49, \$1246.49, \$1247.49, \$1248.49, \$1249.49, \$1250.49, \$1251.49, \$1252.49, \$1253.49, \$1254.49, \$1255.49, \$1256.49, \$1257.49, \$1258.49, \$1259.49, \$1260.49, \$1261.49, \$1262.49, \$1263.49, \$1264.49, \$1265.49, \$1266.49, \$1267.49, \$1268.49, \$1269.49, \$1270.49, \$1271.49, \$1272.49, \$1273.49, \$1274.49, \$1275.49, \$1276.49, \$1277.49, \$1278.49, \$1279.49, \$1280.49, \$1281.49, \$1282.49, \$1283.49, \$1284.49, \$1285.49, \$1286.49, \$1287.49, \$1288.49, \$1289.49, \$1290.49, \$1291.49, \$1292.49, \$1293.49, \$1294.49, \$1295.49, \$1296.49, \$1297.49, \$1298.49, \$1299.49, \$1300.49, \$1301.49, \$1302.49, \$1303.49, \$1304.49, \$1305.49, \$1306.49, \$1307.49, \$1308.49, \$1309.49, \$1310.49, \$1311.49, \$1312.49, \$1313.49, \$1314.49, \$1315.49, \$1316.49, \$1317.49, \$1318.49, \$1319.49, \$1320.49, \$1321.49, \$1322.49, \$1323.49, \$1324.49, \$1325.49, \$1326.49, \$1327.49, \$1328.49, \$1329.49, \$1330.49, \$1331.49, \$1332.49, \$1333.49, \$1334.49, \$1335.49, \$1336.49, \$1337.49, \$1338.49, \$1339.49, \$1340.49, \$1341.49, \$1342.49, \$1343.49, \$1344.49, \$1345.49, \$1346.49, \$1347.49, \$1348.49, \$1349.49, \$1350.49, \$1351.49, \$1352.49, \$1353.49, \$1354.49, \$1355.49, \$1356.49, \$1357.49, \$1358.49, \$1359.49, \$1360.49, \$1361.49, \$1362.49, \$1363.49, \$1364.49, \$1365.49, \$1366.49, \$1367.49, \$1368.49, \$1369.49, \$1370.49, \$1371.49, \$1372.49, \$1373.49, \$1374.49, \$1375.49, \$1376.49, \$1377.49, \$1378.49, \$1379.49, \$1380.49, \$1381.49, \$1382.49, \$1383.49, \$1384.49, \$1385.49, \$1386.49, \$1387.49, \$1388.49, \$1389.49, \$1390.49, \$1391.49, \$1392.49, \$1393.49, \$1394.49, \$1395.49, \$1396.49, \$1397.49, \$1398.49, \$1399.49, \$1400.49, \$1401.49, \$1402.49, \$1403.49, \$1404.49, \$1405.49, \$1406.49, \$1407.49, \$1408.49, \$1409.49, \$1410.49, \$1411.49, \$1412.49, \$1413.49, \$1414.49