

THE HARRINGTON JOURNAL

SIXTIETH YEAR

PUBLISHED WEEKLY

HARRINGTON, DELAWARE

THURSDAY, FEBRUARY 19, 1976

FIFTEEN CENTS PER COPY

NO. 36

Warrington Speaks Out For Students

Board Hears Seniors and Track Coach Jim Blades

On Monday night, the Lake Forest School Board through its well respected but oftentimes outspoken spokesman, E. B. Warrington, Jr., reversed its policy "...for this one situation", according to Warrington, and voted to permit the seniors a class trip will be "...an overnight one."

According to Brenda Moffett, the student spokesman for the class, they plan a trip to "Rocking Horse Ranch," near Yland N.Y. Acting Superintendent Melvin Luff recited the policy the board has followed in the past and according to Luff "...the policy of the Board has been that an overnight class trip was prohibited." Warrington speaking in a compassionate frame of mind appealed to the personal side of the problem side of the problem encouraging the "injust this one incident." "In the past," Warrington said, "the Board has seen fit to prevent overnight class trips due to safety (like when they visited New York City) as well as "...the student groups getting out of hand" on the trips. "But why condemn this class for what other classes have done," recounted Warrington. "I don't think that it is right for us to hold firm to such a policy in every case," continued Warrington. With an overnight trip out of the question, it meant according to Warrington "...getting up very early in the morning returning very late in the night, and...it sort of ruins the trip...and it is with that compassionate speech (and one of the most compassionate speeches heard before the Lake Forest School Board meetings) Warrington's motion passed into policy "...for this one situation."

According to Brenda Moffett, the student representative there are some 240 students in the upcoming graduating class. Approximately half or 120 will participate in the class trip. A further note brought on by the overnight trip is the proper chaperoning. Warrington suggested that Mr. Luff along with William Griffin, High School Principal, come up with a plan of proper proportion of chaperones to students. Warrington suggested a one to every 10 students with the high school administrative staff working out the proper "Composition and details" as stated by Warrington.

In other matters before the Board, the members listened to a taped telephone message from Roy Shiels of the law firm of Brown, Shiels, Barros of Dover, who represent the school in the court action involving the so called faulty construction of the roof or the materials used there on which is the subject matter of the court case...whether the material or the workmanship was the real cause for the damages suffered when the roof began to leak over four years ago. According to Shiels, an attorney for the opposition has asked for some 25 items to be taken by way of further depositions. Shiels also reported that the case has been filed for trial and that when it comes to trial it will take two to three weeks to try. The main issue before the parties is the question of either "faulty materials" or "faulty workmanship." This will be the question to be resolved. Luff reported that in the intervening four years there have been "...a couple" cases practically on point according to their lawyers Brown, Shiels and Barros. The suit which Shiels has entered for the School District is in the amount of \$390,000 in damages. According to Shiels the case is progressing to a point where it will come to trial at an early date.

Final points of discussion before the Board heard E. B.

Warrington poll the Board to determine if the Board members had received any complaints about the menus...particularly at North Elementary School. According to Board member Marvin Brown, "...this type of complaint will always be with the students, and it is virtually impossible to satisfy all students." The matter was referred for further study.

Mrs. Harrison Melvin requested permission to submit a contract of bus service for her soon to be incorporated business of operating busses. From a legal standpoint if was pointed out by certain board members that the "contracts for bus routes should always be with individuals irrespective of whether or not it is incorporated, for protection for the school district interest.

In a matter which took up most of the evening at the school board meeting on Monday night, Trach Coach Jim Blades, the most successful track coach in the history of L.F. sports, made a dramatic and appealing call for help for his track program. Coach Blades speaking in an even tone pointed out his successes to the Board in the past four years since he has headed up the track program. He told the Board on Monday night that the time has come for some immediate changes. The present facilities at the Chipman school are totally unsafe for not only his players but those from visiting schools. Blades sees a need to relocate his track program to the high school, where he feels in the long run he can gain more support for the sport. He has brought three state wide championships to Lake Forest in the cross country sport for the past three years running.

He continued to cite things wrong with the present set-up including the fact that the track at the Chipman School is only 379 yards instead of the regulation 440 yards, which means that the track is 61 yards short. He further contends that the track is unsafe, for it is slippery, miry and sloppy in spots when wet. The jump boxes for the high jump and pole vault events are also unsafe. Last year according to Blades "...some of the schools refused to participate because of the unsafe factors prevailing. Blades reading from a prepared text threw out the question "why go to Chipman...reason no suitable storage for equipment, the cost of transportation (carrying both boys and girls from the high school to Chipman, the problems of riding the bus and discipline on the bus, and the problems of arriving at Chipman when the players arrive in separate vehicles. Arriving later than the bus," the students invariably will wonder over to Quillens market", according to Blades. There is the greater problem of routing students with the late bus, some riding the bus but walking home general supervision of the students is hard to accomplish. There is also the problem of water standing on the north end of the track at Chipman. According to Blades water is a problem at the Chipman school. Blades also says that because he teaches at the high school, he cannot get down to the Chipman school much before the track meet is to start, and therefore he cannot properly set up.

Blades went on to relate that he is coming before the School Board because he feels that the sport is a major one now and he plays it to win. He believe the

(Continued to page 5)



(l-r) Lorraine Moyer, Betty Cubbage and Elizabeth Banks, council members for the Town of Bowers carry on the town affairs at last Thursday's council meeting in absence of Mayor Tuthill and Vice-Mayor John King.

Bowers Beach Wants Sewer

In a heated meeting last month in the Bowers Firehall, the townspeople heard from Walter L. Fritz Jr., County Engineer and the consulting engineers regarding the proposed sewer installation for the Town of Bowers. During last summer's Town elections, a question regarding the sewer was posed on the ballot, which indicated, according to Fritz, an overwhelming support by the townspeople for the project. This desire for the project was one of the requirements in the overall process, said Fritz. So far, the project does have 85 percent funding, which will leave Bowers with 15 percent to supply. Fritz said of the proposed project "we're working out the details now."

Last Wednesday at the regular monthly meeting for the Town of Bowers, the councilmen voted to restrict Bayview Heights from coming in or connecting up with the Town of Bowers when the central sewer comes through. With the Mayor (Phillip Tuthill) away to Canada visiting relatives and John King, the vice Mayor home ailing, the women of the council, Lorraine Moyer, Elizabeth Banks and Betty Cubbage, ran the council meeting.

The need for central sewer is evident from the report given by the State (Environmental Agency) as well as the report from the consulting firm of engineers. From the feeling of the Council members, the sewer is also a needed item. If the Town of Bowers chooses not to use the money appropriated for the installation the money will be turned over to another Town in Pennsylvania. The program is federally funded.

Mrs. LeMunyon gave a bicentennial report designating June 19 which will be the official opening of the museum at Bowers and the "Bless of the Boats."

Mrs. LeMunyon requested articles or tickets to be given so that they may be sold during the festival day to raise money to help pay the museum renovations. There will be breakfast served on the festival day and the cost of the breakfast will be \$2.50.

Henry DuPont Ridgely was named as the Town attorney. His official capacity as the Town attorney will begin immediately.

Mrs. James Pedersen gave a report on the attempt by Mayor Tuthill and her to get funds to construct a recreation area for the Town. They need to select a site, mark it by way of a Town may, present it on March 4th to the Parks and Recreation Committee for the County for their approval. It then will be presented to the Levy Court for final approval.

Fire Report

Harrington Volunteer Firemen answered the following during the week: Monday, Feb. 9 at 7:44 a.m., twenty-two men with one engine responded to a chimney fire at 108 Fleming Street...at 5:53 p.m. Monday two engines were used and 37 men responded to put out an automobile fire on Rt. 14 at Vernon...on Friday, Feb. 13, at 10:24 p.m., two engines were used at a washdown at the United Parcels Service on Rt. 13, with 33 men in service... Monday, Feb. 16, at 3:50 p.m. three engines with 27 men in service responded to a field fire on Rt. 59 on the Whiteleysburg Road west of Harrington.



Norman Powell, left center, bicentennial accepts a specially made plate for the Town of Bridgeville for Richard Thomas extreme right. The bicentennial committee commissioned 200 of these plates. This one is #1. Others in the picture are left to right, Town Commissioner Ear Willey, Evelyn Ewing, Barbara Slacum, secretary to be bicentennial committee, Diane Johnson and Kyle Ewing, recently elected town commissioner and chairman of bicentennial committee for Bridgeville. The presentation took place Monday night at the town meeting.

Special Stamp Series To Be Issued Monday

The State of Delaware, and more specifically the Capital City of Dover, will be honored Monday, Feb. 23rd, when the new 13c Fifty State Flags Commemorative stamps will be placed on sale starting at 11 a.m. The sheet of fifty 13x stamps depicts the flags of individual states arranged in order of the admission of their states to the union. Delaware, of course, occupies the number one position on this sheet.

The Dover Post Office, as well as the Post Offices in the other forty nine state capitals, will be supplying special machine cancellations bearing the words "Fifty-states-one nation/USA bicentennial. This cancellation will be available from February 23rd until March 9th.

All customers desiring specific stamps cancelled on their own covers will be required to purchase full sheets of stamps and affix the stamps of their choice to their covers. The covers should then be sent, under cover of a larger envelope, addressed to Fifty Flags Cancellation, care of Postmaster, Dover, Delaware 19901. These items will be accepted, for special machine cancellations, until March 9th.

Dedication ceremonies have been scheduled for 10:30 a.m., Monday, February 23rd, at the Dover Post Office, 55 The Plaza, Dover, Delaware 19901. Local and state government officials, along with various postal officials, have been invited to participate in these ceremonies, which will be open to the public.



Cubmaster Ray Blanchette (right) of Pack 76 in Harrington receives a check for fifty dollars from Rotary Club president Howard Wagner for the work the Cub Scouts did during the Thanksgiving Arts and Crafts Show in November. The presentation was made Monday night at the Rotary Club's regular monthly meeting.

College Night Set At LF

A college night has been scheduled for Lake Forest High School, Thursday, March 4, from 5:30 to 9:45 p.m.

The project, which is being initiated by the Lake Forest Guidance Department, chaired by Daniel Newman and a group of interested parents, has involved inviting a group of colleges, who will have representatives available to personally answer questions by attending parents and students.

Mrs. Elva Warren, a member of the group planning the night, stressed the importance of having as many parents as possible attend the program.

The format will be as follows: 5:30 College representatives arrive and report to the cafeteria for a brief orientation by the principal. Students will also arrive at this time and report to their gym for a brief orientation. 6 to 6:25 p.m. Session I. (Students and parents will

attend their first college choice of the evening.)

6:30 to 6:55 p.m. Session II. (Students and parent will attend their second college choice of the evening.)

7 to 7:25 Session III. (Students and parents will attend their third college choice of the evening.)

7:30 to 7:55 p.m. Session IV. (Students and parent will attend their fourth college choice of the evening.)

7:55 to 9:30 p.m. Session IV. (Break time and movement of representatives, parents and students to the gym and assigned areas for the general session.)

The attending colleges include: University of Delaware - Newark; Delaware State College - Dover; Delaware Technical & Community College - Dover; Delaware Technical & Community College - Georgetown; Salisbury College - Salisbury, Maryland; Brandywine College - Wilmington; Washington College - Chestertown, Maryland; Goldey Beacom Col-

lege - Wilmington; Cushing Junior College - Bryn Mair, Pennsylvania; Pfeiffer College - Misenheimer, North Carolina; Cheyney State College - Cheyney, Pennsylvania; Averett College -

Danville, Virginia; Western Maryland - Westminster, Maryland; Wesley College - Dover; Spring Garden College - Philadelphia, Pennsylvania; Eastern Mennonite College - Harrisonburg, Virginia; Northeastern University - Boston, Massachusetts; Campbell College - Buie's Creek, North Carolina; Wilmington College - Wilmington.

Refreshments will be sold during the evening.

If anyone needs further assistance between now and March 4 Mr. Newman can be reached at (302) 284-9291 or 284-9292.

Seeks Town Crest

The town of Felton, in cooperation with the Felton Bicentennial Committee, is seeking a Town Crest. All residents of the greater Felton area, are eligible.

First place winner will receive a \$25 Savings Bond. Second place winner will receive \$15.

Entries submitted are to be no smaller than 6 inches by 6 inches and shown in full color.

Entries may be mailed to: Felton Bicentennial Committee, P.O. Box 136, Felton.

All entries become the property of the town of Felton. The first place winning entry will become the Official Town Crest and be used for a Town Flag on town stationery, and anyway the town may deem appropriate to promote the Felton area.

All entries are to be in the possession of the Town Council or the Felton Bicentennial Committee no later than March 1.



On Tuesday the first of many trees to given to Woodbridge High School by the Marine Corps was planted. Helping in the ceremony were (kneeling l-r) John Wilkerson, Dennis Harcum [FFA Advisor], [standing] Doug Curry, Carla Vanderwende, Randy Willy Captain Tom Kelly, Rick Welch, Sargeant William Albert and Cale Boggs Jr. Lt. Col. of the Marine Corps Reserves.

Tree Planting For Woodbridge

Woodbridge FFA members joined Captain Thomas Kelly and Sgt. William Albert of the U.S. Marines in a Bicentennial Tree Planting Ceremony at the Woodbridge High School Tuesday, Feb. 17.

The initial seedling planted was an eastern white pine chosen for its Bicentennial significance as a native American Tree used by the British for ships' mastsheads during revolutionary times. Colonists were forbidden to

use it, and order which created a point of contention settled by the outcome of the Revolution.

Tuesday's ceremonial planting marked the first of 200 trees - including white pine, loblolly pine and Norwegian spruce - to be planted at Woodbridge.

The whole project is a part of a continuing double anniversary celebration, the 200th for both the U.S. Marines and the U.S.A. In promoting the tree planting,

the Marines join with the State of Delaware (through the Governor's office and the Department of Agriculture) in a plan to distribute a seedling to every Delaware citizen during the Bicentennial. To that end a half million seeds were planted near Ellendale to be ready by 1976. Through the Marines the first 8000 seedlings are being distributed to high schools and local community areas throughout the state.

Felton Avon Club Helps In 'Pitch In' Program

The State Division of Highways has developed an Anti-Litter Program in hopes of reducing the cost of collecting and disposing of roadside litter each year in Delaware.

One phase of this program is to show the public, by means of a slide-show presentation, how serious the problem has become...so serious, that the annual cost in highway litter alone has now reached the \$250,000

mark. On Wednesday, February 4th, Donald J. Hickman, the Pitch In representative of the Highway Division, presented the program to the Felton Avon Club, Mrs. Barbara Jacobs, president.

Also during the meeting, Mrs. Edith Hemphill demonstrated some of the possible benefits available through the recycling of waste... such as headboards and bed

legs made of recycled plastics; the use of recycled tire rubber in the manufacturing of carbon paper, and the use of fibers from old tires as a source of insulation.

The Pitch In program is available for showing to interested groups, clubs and organizations by contacting: The Public Information Office, P.O. Box 778, Dover, Delaware 19901. Telephone 678-4314.

Farmington

by Mildred Grey

The Greenwood Elementary Woodbridge Jr. High School is sponsoring a covered dish supper on Tuesday, Feb. 24, 1976 at 6 p.m. in the Greenwood School cafeteria. Admission will be adults \$1.75, children under 12 \$.75. Tickets are available from any PTA officers or member or call 398-8740 Judy Rash, Sec. or call 398-4149 Betty Bullard Publicity Chairman.

Mr. and Mrs. Edward Robichaud have both been the sick list this past week. on the sick list this past week.

Mr. and Mrs. John Bullard entertained Mr. James

Walker of Easton and Mr. Walker of Easton and Mr. and Mrs. William Messick to dinner on Sunday afternoon.

Weekend visitors of Mr. and Mrs. Larry Rash and Mrs. Addison Collins were Mrs. Rash's parents.

Mr. and Mrs. Vernon Kennedy Sr. of Clinton, Md. Sunday Mrs. Rash's brother Vernon Kennedy Jr. and friends from Coatesville, Pa. landed in their yard in his helicopter and spent the day with them.

Mr. and Mrs. William Messick returned home after two weeks visiting friends, sight seeing and camping at a business trip through Arizona, Texas, Oklahoma and other parts of the west.

We are sorry to hear Mrs. Lester Hatfield is confined to her home in bed for three weeks.

Greenwood

By Pat Hatfield

Report from Hickory Ridge Congregational Methodist Church, The Rev. William Fleichauer, pastor. We feel, due to illness perhaps, our attendance was down on Sunday to about 50. The pastor and his family are recovering and glad to be out again.

The main emphasis of our service Sunday evening was relating to our Revival which will be February 29 to March 7.

In addition to many who are ill at home, there are several from the community who are ill in hospitals. Mrs. Beatrice Drummon is in Peninsula General Hospital, Mrs. Helen Volkmar is at Nanticoke Hospital, Mrs. Lizzie Russell is at Kent General, Mrs. Clara Adams, Mrs. Hazel West, "Buff" Taylor, are at Milford Hospital.

Miss Rhonda Wisseman of Lincoln was a weekend guest of her aunt and uncle, Mr. and Mrs. Alfred Melvaine.

S. A. John F. Clarke, who is serving his country in the Coast Guard, stationed at Sandy Hook Coast Guard N. J. was a weekend guest of his grandmother, Mrs. Theresa Ottey.

Mrs. Jacob Hatfield was a Wednesday night dinner guest of Mrs. Theresa Ottey.

Mr and Mrs. Edgar English had as their Sunday dinner guests, Mr. and Mrs. Francis Simpson, Mrs. Pauline Morgan, Mrs. Edna Sapp, all of Houston; Marshall Hart of Magnolia; and Mr. and Mrs. John Lemmon and daughter, Cheryl of Milford.

Mrs. Helen Workman enjoyed the program sponsored by the American Association for Retired People given at the Seaford Manor House on Thursday. After she was a dinner guest of the Rev. Miss Muriel Smith in the dining room of the Manor House.

Mr. and Mrs. Carlos Wisseman have little Micky Wisseman and his mother, Bonnie, visiting them this week. Michael is in Milford Hospital for surgery. Remember him in prayer.

Anne and Mary Beth Cannon of Wilmington spent the weekend with their parents, Mr. and Mrs. Norman Cannon.

Patrick Cannon, son of Mr. and Mrs. Norman Cannon, has returned to his studies in the School of Agriculture, University of Delaware. We congratulate him on making the Dean's list.

Mr. and Mrs. Gary Bollinger and children were in Lewisburg, Pa., over the weekend, having been called there by the death of Gary's grandmother, Mrs. Katie Suffel.

Senior Citizens News

replaces Mrs. Emo Tee, who had the job previously.

Tuesday, George Goodge visited us again with a film of Philadelphia. This is a great city with many things of interest, such as sports with horse racing, base ball, football, basketball and big industries, tall buildings, music, airports, and large ports where more goods are shipped for them to other countries and received than in any state in the U.S.A.

Thursday, Carl June our own druggist talked to us about the Generic Drug Bill giving us pointers on the

difference on them in price and their use. The Board met at 8 p.m.

Friday, bowling and shopping with 12 bowlers. Fred Litmann come out on top with 273 pins. Jim Konecki had 272, Bette Martin with 261, George Goodge 233, Andy Anderson had 226 and Dan Noel had 204.

The spot light this week falls on another one of members from a neighboring community, Carolyn Palladine, who lives with her husband between Felton and Greensboro.

Carolyn and her husband

have one son, also married. They have no grandchildren.

Carolyn has had her share of sickness but she is getting so she is able to attend the Center once again. She was missed very much when she was not able to attend and the members are glad she is back again. She has helped in the ceramic department and is a good seamstress.

Carolyn is easy to get along with and every one likes to have her around.

Members, don't forget the 25th, we will have all day game affair here with refreshments in the afternoon

Around Town

By Loretta Hitchens

Mr. Jake Bivens of Houston visited the Brown's Sunday, February 15th.

George Riley was the Sunday morning guest of Elder Elwood Brown.

Mrs. Valicia George of near Harberson visited Rev. Loretta Hitchens.

Mr. and Mrs. Freddie Walker have gone to Mobile, Alabama, for a two weeks vacation and honeymoon. Mrs. Walker is the daughter of Rev. Loretta Hitchens.

Mrs. Lola Moore visited the Brown's Sunday afternoon.

Joseph Stiles of Georgetown was the weekend guest of Elder Randolph Brown and Leo Burris.

Loretta Hitchens visited her uncle and aunt, Mr. Jehu Dale and Mrs. Elmira Houston of Millsboro last Thursday.

Elder L. F. Mitchell of Millsboro Holiness Church Pastor and Congregation will hold services at the

Philadelphia Church Saturday night February 21st, on Route 13, Harrington.

Baptism was held at the Philadelphia Pentecostal Church, Ellendale, Sunday. Members from Harrington Philadelphia Pentecostal Church attended the services at 3 p.m.

A theater's green room was the off-stage sitting room used by the actors, and gets its name from the fact that its walls were often painted green to rest the eyes exposed to bright stage lights.





Ground Beef 79¢ lb. Quartered Sliced Pork Loin 9 to 11 chops \$1.39 lb.	Pork Chops Loin Center Cut \$1.59 lb. \$1.49 lb.	Boneless Chuck Roast 99¢ lb. Beef Roast \$1.09 lb.
Shoulder Roast 99¢ lb.	All Meat Franks 1 lb. pkg. 89¢	Beef Loin 60 lb. Avg. \$1.39 Beef Rib 35 lb. Avg. \$1.19 lb.
Sliced Bacon 1 lb. pkg. \$1.49	Sauerkraut 4 16 oz. cans \$1	Coffee Regular Drip El Perk \$1.39 1 lb. can
Tomatoes 4 16 oz. cans \$1	Pineapple 2 Slices or Chunks \$1 Juice Pack 20 oz. cans	Green Cabbage 12¢ lb.
Apple Sauce 2 35 oz. jars \$1	Sweet Peas 3 16 oz. cans \$1	Apples •Red Delicious •McIntosh 79¢ 3 lb. bag
Pork & Beans 40 oz. can 69¢	Dove Liquid [For Dishes] 22 oz. btl. 69¢	Red Potatoes 5 lb. bag 99¢
Kosher Dills quart jar 59¢	Tone Soap [With Cocoa Butter] 2 bars Regular Size 59¢	Tomatoes 59¢ lb.
Terri Towels Decorated or Assorted 49¢ big roll	Cheer Detergent 10 lb. 11 oz. box \$3.69	Sunkist Oranges 10 for 99¢ 113 Size
Margarine 4 Coffee Mug 8 oz. mugs \$1	DELI SLICED JUMBO BOLOGNA 1 lb. 99¢	Pascal Celery bunch 39¢
Biscuits Pillsbury 4 Pack 8 oz. tubes Country Style or Buttermilk 49¢	SLICED SWISS CHEESE 1 lb. \$1.89	Sliced Bread 3 King Size 22 oz. loaves \$1
Citrus Punch 64 oz. btl. 59¢	HERSHEY PICKLE or OLIVE LOAF 1 lb. 99¢	COUPON for MAYONNAISE 79¢
2% Milk gallon \$1.49	SHOCKER logo	

Store Hours
Mon-Wed 9 to 6
Thurs-Sat 9 to 9

We serve the right to limit quantities.

QUILLEN SHOPPING CENTER

Prices effective Feb. 19, 20 and 21, 1976.

THE HARRINGTON JOURNAL NEWSPAPER, INC.

HARRY G. FARROW, JR. Publisher MARGARET R. FARROW Editor

Subscription Rates \$6.00 per year Out of State \$8.00 per year

Office of Publication, 1 Commerce Street, Harrington, Delaware. Second class postage paid at Harrington, DE 19952.

Career Corner

By Buck Thompson

printed in the Journal for youths

A salesworker behind the counter is often the closest you, the consumer, come to the person or company that manufactures a product. A smiling, helpful retail salesperson can make all the difference in purchasing a product. The duties of a retail sales worker are: Creates a customer's interest in the merchandise. Answers questions, demonstrates its use, show various models and colors. Makes out sales or charge slips. Receives cash payments. Gives change and receipts. Wraps purchases. Handles merchandise returns and exchanges. May order merchandise. May stock shelves or racks. May mark price tags. May take inventory. May prepare displays. About 2.8 million salesworkers are employed in retail businesses. About three out of ever five workers are women. The largest number of retail salesworkers are employed in department stores and shops selling general merchandise, food, clothes, and accessories. But retail salesworkers also work for door-to-door sales companies and mail order companies. Although it is not always necessary, employers prefer salesworkers with high school diplomas. Part-time or summer sales jobs give experience and help in getting a full-time job. High school courses in commercial arithmetic, salesmanship, merchandising, principles of retail selling, or even home economics are good background for many selling positions. Once hired, you are trained on the job. In small stores, experienced employees train newlyhired sales

workers; in large stores, specialized training programs teach new employees. Retail salesworkers usually work in clean, well-lighted, often air-conditioned stores. But some sales workers, such as kitchen equipment, vacuum cleaner, and used car salesworkers may spend time outside or visiting customers.

Retail trade salesworkers' earnings vary extensively by type of business, geographic location, size of the operation, and ability of the employee. Salesworkers in routine jobs, who only "wait on" customers, generally start at the minimum wage. Experience salesworkers may earn \$3 - \$6 or more an hour. Some earn straight salaries; others also receive commissions. Sales jobs are found in almost every community. The majority of the jobs, though, are found in large cities and populate urban areas.

The outlook for sales workers is mixed. In some product areas (such as expensive clothes, furniture, color tv's, autos, air-conditioners, and appliances) sales were down last year during the current recession and fewer sales people were hired. Sales employment will increase only slowly in areas in which self-service through automotive check-out and computerization leads to fewer salesworkers. This is true in most food stores and is now being extended to some drug and variety stores. But jobs in retail trade are expected to increase moderately through the 1980's, according to the U.S. Labor Department. Prospects look bright in retail trade selling necessities, as opposed to luxuries. Totalling up job opportunities, the register rings "Sales."

Bicentennial Calendar

February 19 Dover. Forum. "Private Enterprise in the Market Place: Subsidizing and Regulating: Controlling the Economy and Selling the Consumer." An American Issues Forum program. Sheraton Inn. 8 p.m.

February 21 Rising Sun. Reception and Post Card Display. Community Clubhouse. 2 p.m.

February 21 Magnolia. Skits of Washington's Life. Magnolia Methodist Church Fellowship Hall. 7 p.m.

February 1-29 Milford. Heritage Month program will feature a choral concert by Milford singers; publication of an account of Milford's pre-Revolutionary history and of biographies of Milfordites; and a Bicentennial issue of the "Milford Chronicle."

February 1-29 Dover. Heritage Month displays in Lookerman Street shop windows.

Open Letter to Chipman Parents

Dear Parents, This is the week that the eighth graders have been looking forward to. The high school counselors are meeting with each eighth grade section on Tuesday or Wednesday of this week. High school becomes a reality. Some students still cannot believe that they must take a real part in planning their future. These meetings will help to make the necessary decisions easier, for in addition to explanations about state requirements for graduation and courses open to ninth grade students, there will be time for individual questions. In our next regular guidance classes we will get right to work on our individual programs for next year. The students and I will work on them. Then you will be asked to look over what we have done. When we have all done the best we can, we will get it all down in proper form for the high school. Remember, the final decisions are made by your child with your approval. I advise and counsel, but I do not make the decisions. Seventh grade students are not forgotten. We greet each other in the halls. Sometimes they come to my office asking for help of various kinds. I am glad when they feel free to do this. Your encouragement will help them to use the services of this office. Until next week... Sincerely, Sarah S. Webb Counselor

"If thine enemy wrong thee, buy each of his children a drum." Old Chinese proverb

W.T. Chipman Junior School Honor Roll

7th Grade

HIGH HONORS Shelly Baynard Mia Butler Sherry Calhoun Charupin Charoentep Ken Clark Elaine Homewood Carla Klosowski Loretta Latocha Jeannie Mutzabaugh Libby Roach Diane Speckman Kay Sylvester Edwin Tucker John Veith Deborah Weaver Vicky Wetherhold Rhonda Whitt Patrick Williams Karen Wothers Lisa Wyatt

HONORS Elaine Aiken Janet Brown Brenda Dixon Darlene Frchette Candy Hogan Robin Kashner Maureen McCabe Doug Poore Donald Porter Debra Powell Diana Voshell John Way Todd Wise

Woodbridge Junior High School Honor Roll

HIGH HONORS

Billy Bowser Donna Brown Jennifer Conaway Jerry Hamstead David Johnson Walton O'Day Denise Outland Suellen Schrock Sheree Smith Terri Tarr

HONORS

Kenny Baker Laurie Barnes Joey Busby Kevin Chaloupka Valerie Fields Dianne Grose Lisa Hamstead Greg Mervine Jay Mervine Keith Moore Lori Perdue Larua Richardson Steven Richards Christine Schrock Kelly Kelly Valerie Wheatley Debbie Willing

HONORABLE MENTION

Debra Bell Ralph Benson Myra Colmenero Donald Gosser Jean Levers Karen Stein Kim York

8th Grade

HIGH HONORS Walter Edwards Tina Fink Jerry Jackson Lou Ann Jackson Debbie Schieferstein Lisa Welch

HONORS

Lisa Bostick Michael Carroll Melanie Cline Dina Cohee Leroy Garey Holly Grandfield Richard Hurd Tina Lapinsky Karen Lesso Dee Lloyd Dale Moore Pam Place Libby Webb Lori Welch Ken Williams

HONORABLE MENTION

Brett Asbury Crystal Shear

CREDITS

Kim Baker David Breeding Linda Breeding Michael Brummell Judy Cordey Kevin Fountain Debbie Gallo Michael Ray Hastings Jimmy Higgins Ricky Hughes Roger O'Day Denise Pettit Debbie Polk Bruce Trader Vicki Welch Peggy Workman Bridgette Wroten

HIGH HONORS

Colinda Kay Andrews Cindy Benton Kathy Burris Kathy Burrows Lisa Clark Robert Cox Cathy Friedel Debra Hayes Tina Henry

CONVENTIONAL BUILDERS, INC. Harrington, Del. • Roofing • Vinyl Siding • Aluminum Siding • All Types Remodeling "All of our workmen have at least 20 years of experience & take pride in giving quality work." Call 398-8020

Days of Our Years

TEN YEARS AGO

Fri., Feb., 18, 1966

Mr. and Mrs. H. Arthur Hoffman were honored at a reception Feb. 12 at the Harrington New Century Club celebrating their 25th wedding anniversary. Mr. and Mrs. William A. Taylor of Harrington announce the engagement of their daughter, Christine Elizabeth, to P. Bruce Chapelle of Dover. An April wedding is planned. There was no action taken at a meeting of the City Council Tuesday night for the lack of a quorum, three of the six members being absent. Claude Mann and his father-in-law, Don Myers, both of Jacksonville, Fla., visited Mr. and Mrs. Alfred G. B. Mann over the weekend. The store, formerly occupied by Benny Bronstein of Commerce Street is being razed. The vacant frame structure had been condemned by the fire marshal. Bronstein had a confectionary store in it. No plans have been advanced for the use of the land.

Mr. and Mrs. Harold McDonald spent last Sunday in Philadelphia with their daughter, Susan, who is a sophomore at the University of Pennsylvania. She was celebrating her 20th birthday.

From the "16 yrs. ago" col... "Miss Dorothy Mes-

Ann Houtman Janice Maddox Faith Ann Mel Ivain Traci Mitchell Ginger Pratt David Newman Linda Todd Jennifer Torbert Kim Williams Teresa Workman

Lorraine Beauchamp Joan Boyd Regina Burbage Ruby Donovan Donna Draper Karen Drummond Jeff Garey Paul Legates Tracey Moorer Paula Prettyman David Schrock Dawn Willey Lance Willey Joseph Sparrow Harry Willey Tammy Zoch

Ann Houtman Janice Maddox Faith Ann Mel Ivain Traci Mitchell Ginger Pratt David Newman Linda Todd Jennifer Torbert Kim Williams Teresa Workman

Lorraine Beauchamp Joan Boyd Regina Burbage Ruby Donovan Donna Draper Karen Drummond Jeff Garey Paul Legates Tracey Moorer Paula Prettyman David Schrock Dawn Willey Lance Willey Joseph Sparrow Harry Willey Tammy Zoch

Lorraine Beauchamp Joan Boyd Regina Burbage Ruby Donovan Donna Draper Karen Drummond Jeff Garey Paul Legates Tracey Moorer Paula Prettyman David Schrock Dawn Willey Lance Willey Joseph Sparrow Harry Willey Tammy Zoch

Lorraine Beauchamp Joan Boyd Regina Burbage Ruby Donovan Donna Draper Karen Drummond Jeff Garey Paul Legates Tracey Moorer Paula Prettyman David Schrock Dawn Willey Lance Willey Joseph Sparrow Harry Willey Tammy Zoch

Lorraine Beauchamp Joan Boyd Regina Burbage Ruby Donovan Donna Draper Karen Drummond Jeff Garey Paul Legates Tracey Moorer Paula Prettyman David Schrock Dawn Willey Lance Willey Joseph Sparrow Harry Willey Tammy Zoch

Lorraine Beauchamp Joan Boyd Regina Burbage Ruby Donovan Donna Draper Karen Drummond Jeff Garey Paul Legates Tracey Moorer Paula Prettyman David Schrock Dawn Willey Lance Willey Joseph Sparrow Harry Willey Tammy Zoch

Lorraine Beauchamp Joan Boyd Regina Burbage Ruby Donovan Donna Draper Karen Drummond Jeff Garey Paul Legates Tracey Moorer Paula Prettyman David Schrock Dawn Willey Lance Willey Joseph Sparrow Harry Willey Tammy Zoch

Lorraine Beauchamp Joan Boyd Regina Burbage Ruby Donovan Donna Draper Karen Drummond Jeff Garey Paul Legates Tracey Moorer Paula Prettyman David Schrock Dawn Willey Lance Willey Joseph Sparrow Harry Willey Tammy Zoch

Lorraine Beauchamp Joan Boyd Regina Burbage Ruby Donovan Donna Draper Karen Drummond Jeff Garey Paul Legates Tracey Moorer Paula Prettyman David Schrock Dawn Willey Lance Willey Joseph Sparrow Harry Willey Tammy Zoch

Lorraine Beauchamp Joan Boyd Regina Burbage Ruby Donovan Donna Draper Karen Drummond Jeff Garey Paul Legates Tracey Moorer Paula Prettyman David Schrock Dawn Willey Lance Willey Joseph Sparrow Harry Willey Tammy Zoch

Lorraine Beauchamp Joan Boyd Regina Burbage Ruby Donovan Donna Draper Karen Drummond Jeff Garey Paul Legates Tracey Moorer Paula Prettyman David Schrock Dawn Willey Lance Willey Joseph Sparrow Harry Willey Tammy Zoch

Lorraine Beauchamp Joan Boyd Regina Burbage Ruby Donovan Donna Draper Karen Drummond Jeff Garey Paul Legates Tracey Moorer Paula Prettyman David Schrock Dawn Willey Lance Willey Joseph Sparrow Harry Willey Tammy Zoch

Lorraine Beauchamp Joan Boyd Regina Burbage Ruby Donovan Donna Draper Karen Drummond Jeff Garey Paul Legates Tracey Moorer Paula Prettyman David Schrock Dawn Willey Lance Willey Joseph Sparrow Harry Willey Tammy Zoch

Lorraine Beauchamp Joan Boyd Regina Burbage Ruby Donovan Donna Draper Karen Drummond Jeff Garey Paul Legates Tracey Moorer Paula Prettyman David Schrock Dawn Willey Lance Willey Joseph Sparrow Harry Willey Tammy Zoch

Lorraine Beauchamp Joan Boyd Regina Burbage Ruby Donovan Donna Draper Karen Drummond Jeff Garey Paul Legates Tracey Moorer Paula Prettyman David Schrock Dawn Willey Lance Willey Joseph Sparrow Harry Willey Tammy Zoch

Lorraine Beauchamp Joan Boyd Regina Burbage Ruby Donovan Donna Draper Karen Drummond Jeff Garey Paul Legates Tracey Moorer Paula Prettyman David Schrock Dawn Willey Lance Willey Joseph Sparrow Harry Willey Tammy Zoch

Lorraine Beauchamp Joan Boyd Regina Burbage Ruby Donovan Donna Draper Karen Drummond Jeff Garey Paul Legates Tracey Moorer Paula Prettyman David Schrock Dawn Willey Lance Willey Joseph Sparrow Harry Willey Tammy Zoch

Lorraine Beauchamp Joan Boyd Regina Burbage Ruby Donovan Donna Draper Karen Drummond Jeff Garey Paul Legates Tracey Moorer Paula Prettyman David Schrock Dawn Willey Lance Willey Joseph Sparrow Harry Willey Tammy Zoch

Lorraine Beauchamp Joan Boyd Regina Burbage Ruby Donovan Donna Draper Karen Drummond Jeff Garey Paul Legates Tracey Moorer Paula Prettyman David Schrock Dawn Willey Lance Willey Joseph Sparrow Harry Willey Tammy Zoch

Lorraine Beauchamp Joan Boyd Regina Burbage Ruby Donovan Donna Draper Karen Drummond Jeff Garey Paul Legates Tracey Moorer Paula Prettyman David Schrock Dawn Willey Lance Willey Joseph Sparrow Harry Willey Tammy Zoch

Lorraine Beauchamp Joan Boyd Regina Burbage Ruby Donovan Donna Draper Karen Drummond Jeff Garey Paul Legates Tracey Moorer Paula Prettyman David Schrock Dawn Willey Lance Willey Joseph Sparrow Harry Willey Tammy Zoch

Lorraine Beauchamp Joan Boyd Regina Burbage Ruby Donovan Donna Draper Karen Drummond Jeff Garey Paul Legates Tracey Moorer Paula Prettyman David Schrock Dawn Willey Lance Willey Joseph Sparrow Harry Willey Tammy Zoch

Lorraine Beauchamp Joan Boyd Regina Burbage Ruby Donovan Donna Draper Karen Drummond Jeff Garey Paul Legates Tracey Moorer Paula Prettyman David Schrock Dawn Willey Lance Willey Joseph Sparrow Harry Willey Tammy Zoch

Lorraine Beauchamp Joan Boyd Regina Burbage Ruby Donovan Donna Draper Karen Drummond Jeff Garey Paul Legates Tracey Moorer Paula Prettyman David Schrock Dawn Willey Lance Willey Joseph Sparrow Harry Willey Tammy Zoch

Lorraine Beauchamp Joan Boyd Regina Burbage Ruby Donovan Donna Draper Karen Drummond Jeff Garey Paul Legates Tracey Moorer Paula Prettyman David Schrock Dawn Willey Lance Willey Joseph Sparrow Harry Willey Tammy Zoch

Lorraine Beauchamp Joan Boyd Regina Burbage Ruby Donovan Donna Draper Karen Drummond Jeff Garey Paul Legates Tracey Moorer Paula Prettyman David Schrock Dawn Willey Lance Willey Joseph Sparrow Harry Willey Tammy Zoch

Lorraine Beauchamp Joan Boyd Regina Burbage Ruby Donovan Donna Draper Karen Drummond Jeff Garey Paul Legates Tracey Moorer Paula Prettyman David Schrock Dawn Willey Lance Willey Joseph Sparrow Harry Willey Tammy Zoch

sick, daughter of Mr. and Mrs. Walter Messick, celebrated her 11th birthday, Thursday, Feb. 9. Her guest were Betty Moore, Barbara Edwards, Gertrude Horn, Jean Outten, Virginia Baker, Eleanor Wagner, Virginia Minner, Sandra Raughley, Marlene Raughley, Kay Bowdle, Betty Lee Hendricks, Jean Messick, Ella Messick, Nancy Taylor, Kenna Joe McNatt, Mary Ann Messick, Bobby Taylor and Edward Paskey.

There was no action taken at a meeting of the City Council Tuesday night for the lack of a quorum, three of the six members being absent. Claude Mann and his father-in-law, Don Myers, both of Jacksonville, Fla., visited Mr. and Mrs. Alfred G. B. Mann over the weekend. The store, formerly occupied by Benny Bronstein of Commerce Street is being razed. The vacant frame structure had been condemned by the fire marshal. Bronstein had a confectionary store in it. No plans have been advanced for the use of the land.

Mr. and Mrs. Harold McDonald spent last Sunday in Philadelphia with their daughter, Susan, who is a sophomore at the University of Pennsylvania. She was celebrating her 20th birthday.

From the "16 yrs. ago" col... "Miss Dorothy Mes-

Ann Houtman Janice Maddox Faith Ann Mel Ivain Traci Mitchell Ginger Pratt David Newman Linda Todd Jennifer Torbert Kim Williams Teresa Workman

Lorraine Beauchamp Joan Boyd Regina Burbage Ruby Donovan Donna Draper Karen Drummond Jeff Garey Paul Legates Tracey Moorer Paula Prettyman David Schrock Dawn Willey Lance Willey Joseph Sparrow Harry Willey Tammy Zoch

Ann Houtman Janice Maddox Faith Ann Mel Ivain Traci Mitchell Ginger Pratt David Newman Linda Todd Jennifer Torbert Kim Williams Teresa Workman

Lorraine Beauchamp Joan Boyd Regina Burbage Ruby Donovan Donna Draper Karen Drummond Jeff Garey Paul Legates Tracey Moorer Paula Prettyman David Schrock Dawn Willey Lance Willey Joseph Sparrow Harry Willey Tammy Zoch

Ann Houtman Janice Maddox Faith Ann Mel Ivain Traci Mitchell Ginger Pratt David Newman Linda Todd Jennifer Torbert Kim Williams Teresa Workman

Lorraine Beauchamp Joan Boyd Regina Burbage Ruby Donovan Donna Draper Karen Drummond Jeff Garey Paul Legates Tracey Moorer Paula Prettyman David Schrock Dawn Willey Lance Willey Joseph Sparrow Harry Willey Tammy Zoch

Ann Houtman Janice Maddox Faith Ann Mel Ivain Traci Mitchell Ginger Pratt David Newman Linda Todd Jennifer Torbert Kim Williams Teresa Workman

Lorraine Beauchamp Joan Boyd Regina Burbage Ruby Donovan Donna Draper Karen Drummond Jeff Garey Paul Legates Tracey Moorer Paula Prettyman David Schrock Dawn Willey Lance Willey Joseph Sparrow Harry Willey Tammy Zoch

Ann Houtman Janice Maddox Faith Ann Mel Ivain Traci Mitchell Ginger Pratt David Newman Linda Todd Jennifer Torbert Kim Williams Teresa Workman

Lorraine Beauchamp Joan Boyd Regina Burbage Ruby Donovan Donna Draper Karen Drummond Jeff Garey Paul Legates Tracey Moorer Paula Prettyman David Schrock Dawn Willey Lance Willey Joseph Sparrow Harry Willey Tammy Zoch

Ann Houtman Janice Maddox Faith Ann Mel Ivain Traci Mitchell Ginger Pratt David Newman Linda Todd Jennifer Torbert Kim Williams Teresa Workman

Lorraine Beauchamp Joan Boyd Regina Burbage Ruby Donovan Donna Draper Karen Drummond Jeff Garey Paul Legates Tracey Moorer Paula Prettyman David Schrock Dawn Willey Lance Willey Joseph Sparrow Harry Willey Tammy Zoch

Ann Houtman Janice Maddox Faith Ann Mel Ivain Traci Mitchell Ginger Pratt David Newman Linda Todd Jennifer Torbert Kim Williams Teresa Workman

Lorraine Beauchamp Joan Boyd Regina Burbage Ruby Donovan Donna Draper Karen Drummond Jeff Garey Paul Legates Tracey Moorer Paula Prettyman David Schrock Dawn Willey Lance Willey Joseph Sparrow Harry Willey Tammy Zoch

Ann Houtman Janice Maddox Faith Ann Mel Ivain Traci Mitchell Ginger Pratt David Newman Linda Todd Jennifer Torbert Kim Williams Teresa Workman

Lorraine Beauchamp Joan Boyd Regina Burbage Ruby Donovan Donna Draper Karen Drummond Jeff Garey Paul Legates Tracey Moorer Paula Prettyman David Schrock Dawn Willey Lance Willey Joseph Sparrow Harry Willey Tammy Zoch

Ann Houtman Janice Maddox Faith Ann Mel Ivain Traci Mitchell Ginger Pratt David Newman Linda Todd Jennifer Torbert Kim Williams Teresa Workman

Lorraine Beauchamp Joan Boyd Regina Burbage Ruby Donovan Donna Draper Karen Drummond Jeff Garey Paul Legates Tracey Moorer Paula Prettyman David Schrock Dawn Willey Lance Willey Joseph Sparrow Harry Willey Tammy Zoch

Ann Houtman Janice Maddox Faith Ann Mel Ivain Traci Mitchell Ginger Pratt David Newman Linda Todd Jennifer Torbert Kim Williams Teresa Workman

Lorraine Beauchamp Joan Boyd Regina Burbage Ruby Donovan Donna Draper Karen Drummond Jeff Garey Paul Legates Tracey Moorer Paula Prettyman David Schrock Dawn Willey Lance Willey Joseph Sparrow Harry Willey Tammy Zoch

Ann Houtman Janice Maddox Faith Ann Mel Ivain Traci Mitchell Ginger Pratt David Newman Linda Todd Jennifer Torbert Kim Williams Teresa Workman

Lorraine Beauchamp Joan Boyd Regina Burbage Ruby Donovan Donna Draper Karen Drummond Jeff Garey Paul Legates Tracey Moorer Paula Prettyman David Schrock Dawn Willey Lance Willey Joseph Sparrow Harry Willey Tammy Zoch

Ann Houtman Janice Maddox Faith Ann Mel Ivain Traci Mitchell Ginger Pratt David Newman Linda Todd Jennifer Torbert Kim Williams Teresa Workman

Lorraine Beauchamp Joan Boyd Regina Burbage Ruby Donovan Donna Draper Karen Drummond Jeff Garey Paul Legates Tracey Moorer Paula Prettyman David Schrock Dawn Willey Lance Willey Joseph Sparrow Harry Willey Tammy Zoch

Ann Houtman Janice Maddox Faith Ann Mel Ivain Traci Mitchell Ginger Pratt David Newman Linda Todd Jennifer Torbert Kim Williams Teresa Workman

Lorraine Beauchamp Joan Boyd Regina Burbage Ruby Donovan Donna Draper Karen Drummond Jeff Garey Paul Legates Tracey Moorer Paula Prettyman David Schrock Dawn Willey Lance Willey Joseph Sparrow Harry Willey Tammy Zoch

Ann Houtman Janice Maddox Faith Ann Mel Ivain Traci Mitchell Ginger Pratt David Newman Linda Todd Jennifer Torbert Kim Williams Teresa Workman

Lorraine Beauchamp Joan Boyd Regina Burbage Ruby Donovan Donna Draper Karen Drummond Jeff Garey Paul Legates Tracey Moorer Paula Prettyman David Schrock Dawn Willey Lance Willey Joseph Sparrow Harry Willey Tammy Zoch

Ann Houtman Janice Maddox Faith Ann Mel Ivain Traci Mitchell Ginger Pratt David Newman Linda Todd Jennifer Torbert Kim Williams Teresa Workman

Lorraine Beauchamp Joan Boyd Regina Burbage Ruby Donovan Donna Draper Karen Drummond Jeff Garey Paul Legates Tracey Moorer Paula Prettyman David Schrock Dawn Willey Lance Willey Joseph Sparrow Harry Willey Tammy Zoch

Mr. and Mrs. Emory Breeding, Greenwood, girl; to Mr. and Mrs. Joseph Adamo, Harrington, boy; to Mr. and Mrs. Bradley Worth, Greenwood, girl.

Acme prices: imported canned hams, 2 lbs. each, \$1.99; white crab meat, 79c lb. can

Gayle B. Smith of Harrington won the featured singles event and also shared first place honors with three other marksmen in the secondary handicap test on Sunday's card in the regular Sunday shoot at the Wilmington Trap shooting Association's Basin Rd. Range, New Castle.

Mr. Mark Willey, Mrs. W. W. Sharp and Mrs. Emory Hedgecock attended the executive meeting of the Dover District W.C.T.U. in Milford on Thursday as the guests of Mrs. G. Marshall Townsend and Mrs. William Toyer.

Gary Myer returned to school Monday after being absent several months following a badly broken leg. Taken from "Odd Facts" (pre-Women's Lib journalism's days) "A man who reaches his 50th wedding anniversary deserves a medal for bravery and endurance, according to a doctor in Johannesburg, South Africa."

Houston: The Misses Nancy and Anna Lee Thistlewood spent Sunday in Harrington with their mother's grandparents, Mrs. Annie Sharp.

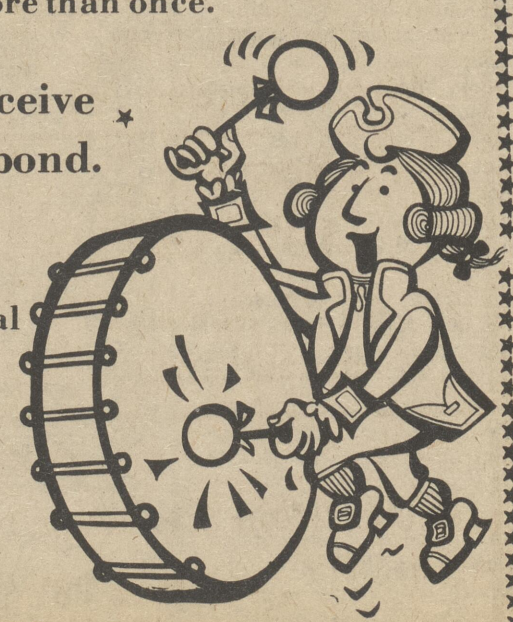
Andrewville: Mr. and Mrs. Charles Wilson and children of Wilmington and Mrs. Alberta Bradley, of Harrington, were dinner guests of Mr. and Mrs. Harry Saulsbury on Sunday.

William McCabe of Harrington was awarded a forty-year pin last week at a safety meeting of the Pennsylvania Rail Road in the fire house. Harrington's new 200,000-gallon water tower has been installed and is expected to take care of the city's needs for years to come.

Births: To Mr. and Mrs. Louis Gerardi, Greenwood, girl; to

ANNUAL PANCAKE SUPPER St. Stephen's Episcopal Church Harrington Shrove Tuesday March 2nd 5 to 7:30 P.M. Pancakes * Sausage * Scrapple ALL YOU CAN EAT! Adults \$2.25 Children (Under 12) \$1.00

"Design-A-Crest" CONTEST Design a crest for the city of Harrington. The winning design will appear on a Bicentennial souvenir. This contest is open to all members of the community, excluding professional artists. You may enter more than once. The winner will receive a \$50.00 savings bond. Send all entries to Harrington Bicentennial Committee City Hall Harrington, Del. Any questions - Call 398-4370 Deadline is Monday, March 1.



FREE DRAWING Come In & Register Now For A Wurlitzer Organ Nothing To Buy Just Register Prior To Drawing B & B Educational Music Service 205 S. Dual Hwy. Camden, Del. 697-1885

DIAMOND BUILDINGS, Inc. BOLD NEW CONCEPTS IN BUILDINGS "For Free Estimate" Call: (302) 337-8089 Eves: 337-4832 Located on u.S. 13 Between Greenwood & Bridgeville P. O. Box 208 Greenwood

Washington's Birthday Fabric Sale Feb. 15th-23rd * Large Group of Cotton Blends * \$1.00 yd. * Gabardine Remnants (Pretty Pastels) \$1.22 yd. * Polyester Plaids & Solids Now Only \$2.22 yd. * 100% Polyester Knits 60" wide \$1.00 yd. * \$1.00 off Double Knits \$2.99-\$4.99 yd. Many More Fabric Bargains! mila fabrics Rodney Village Dover 674-1633



The Sophomore Class of Woodbridge High School [Class of '78] are making preparations for the upcoming chicken dinner to be held in the Bridgeville Fire Hall. They are [l-r] Robert Sutton [principal] Molly Lewis [president] Barbar Short [sophomore advisor], Guy Conaway, Sandy Rantz and Bill Rust.

Applicants Needed For Poultry Princess

Applications are being accepted for the 1976 Delmarva Poultry Princess Pageants, according to Delmarva Poultry Industry, Inc., sponsors of the annual competition. Pageants will be held in Salisbury, Maryland during the 29th Delmarva Chicken Festival, June 11 and 12.

High school sophomores and juniors with a passing grade average are eligible to compete for the title of Delmarva Poultry Princess, a \$1,000 scholarship to the school of her choice and a \$300 wardrobe from Benjamins. A contestant must reside in or attend school in the community she represents. She cannot represent a county, school district or business.

Judging will be based upon five equally weighted areas: achievement and service; poise and appearance; personality and attitude; interviews; and creative expression in the form of a three minute talent presentation.

Young misses of pre-school age will compete for the title of Little Delmarva Poultry Princess and a \$200 United States Savings Bond. Contestants in this category must have had their fourth birthday but not have reached their sixth birthday by July 1, 1976. Judging will be based on personality, poise, appearance and presentation of a brief recitation.

There are two ways to enter the Delmarva Poultry

Princess Pageants. If a preliminary pageant is being held within a community, all entries from the area will be handled by the local committee. The winner of each local pageant becomes a candidate in the Delmarva competition.

If there is no community pageant, entry is made through the at-large program. An official application is completed and mailed with a recent photograph to Delmarva Poultry Industry. All entries must be submitted by April 15, 1976.

Applications forms and further details may be obtained by contacting Delmarva Poultry Industry, Inc., Rt. 2, Box 47, Georgetown, Delaware 19947, telephone 302-856-2971.

LF Board (con't)

facilities are necessary not only for adequate protection but also from the standpoint of better facilities for the athletes. Blades pointed out to the members that for seven years no significant changes have taken place with the track program. On the other hand other sports have moved right along with "feeder teams"...like JV basketball, tennis, soccer, JV soccer, 9th grade wrestling and junior high softball, and the like. Blades was quick to politely point out that the School Board has not put any funds into the winter track program. "We have not asked for any help in the past," according to Blades. Blades praised high school principal William Griffin for his relentless support of the track program. During this period Coach Blades had not received any pay for his services, nor has he received any money for miles traveled, which he pointed out.

The costs of the track program in a full fledged manner would be quite costly. He called upon the school board members to begin to map out a course to follow. The costs of certain types of pits are quite expensive like for instance... "the astro pit", which can cost in the neighborhood of \$2,700.

Board Member James Pizzadelli after Blades made his remarks, pointed out that

the Board wholeheartedly supports his (Blades) needs and realizes the need for insuring the safety and needs of the students, and "the Board should be and is in support of your (Blades) program," said Pizzadelli. Board member E. B. Warrington, Jr. called upon an old clinche by saying "...that we call upon one hour and \$1 to start out on the right foot." The Board members were in agreement that a full scale program was probably out of the question, but somewhere down the line it is necessary to begin to map out a firm foundation for a program to follow in the future. This way the school can gradually build upon this foundation. The strongest point of Coach Blades's argument is safety for the players. Blades commented toward the end of the presentation that "...face a season where safety is a big factor." At this point, Coach Blades passed among the Board members a brochure on

Houston

by Mrs. Margaret Thistlewood

Rev. and Mrs. John A. Gilmore and children of Oxford, Pa. spent Friday with her parents Mr. and Mrs. W. Shockley Dougherty.

On Saturday night, Mr. and Mrs. William Gallagher entertained for dinner, Rev. and Mrs. Alvin Willink, Mr. and Mrs. Frances Simpson, Mr. and Mrs. Josiah Parvis, Mr. and Mrs. Harry Towers, Mrs. Pauline Morgan and Mrs. Edna Sapp.

Mr. and Mrs. Emory Webb, Mrs. Paul Greenlee and Mrs. John Clark visited Mrs. Jack Kennedy of Newark, Del. on Thursday.

Mr. Willis Clifton is a patient in the Miford Memorial Hospital.

Mrs. Velma Whitley and Mr. and Mrs. Harry Towers were Sunday dinner guests

of Mr. and Mrs. William Gallagher. The occasion was the 35th wedding anniversary of Margaret and Harry Towers.

Houston Volunteer Firemen are sponsoring a spaghetti supper on Sat. Feb. 28th starting at 4 p.m. till 7 p.m. Adults \$2.75 - children 6 to 12 - \$1.50 - under 6 free.

Mr. and Mrs. Henry Capehart spent Sunday visiting friends and relatives in Cambridge, Md.

Mr. and Mrs. Clyde Sickler of Saughterties, New York spent the weekend

with her mother, Mrs. Alice Kintz. On Sunday, Mr. Edwin Prettyman and Mr. and Mrs. Kenneth Prettyman visited Lorrie Prettyman at the Alfred I. DuPont Institute near Wilmington.

Call Your Local Agent For Local Service

Roughley Insurance Service

Phone 398-3551 398-3997 Harrington, Del.

Gutsy Sporty Thrifty Ford Courier



See our wide selection of Couriers - the right pickup at the right price. Now in stock for immediate delivery.

BOLAN MOTORS



Ford Country

1127 S. duPont Hwy. Dover 674-0111

8:30 A.M. til 9:00 P.M. each night 8:30 A.M. til 4:30 P.M. Saturdays Closed Sundays

Andrewville

By Florence Walls

Mrs. Sherry Yoder had a birthday dinner on Sunday, Feb. 8 for her husband Jerry Yoder and brother-in-law Eddie Yoder. Guests were their son, Kevin, Betty and Ivan Yoder, Eddie Yoder and Rose, Mr. and Mrs. Jack Bradley Sr., Mr. and Mrs. David Rust and children, Johnny and Tina, Donald and Shirley Baker and their little girl Rena, Steve and Ilene Brown, Albert Larimore and son Rusty, Ray Wright, Jimmy Larimore and Pat Rust.

Mr. and Mrs. Emil Gallo and Mr. and Mrs. Robert Culber have returned home from a two week vacation in Hawaii.

Mrs. John Bradley and Mrs. George Lankford gave Mr. and Mrs. John Bradley

Jr a surprise 25th wedding anniversary on Saturday evening at the New Century Club in Harrington.

Mr. and Mrs. Carmine Gallo Jr. and Mr. and Mrs. Tony Gerardi have returned home from a week's vacation in Tennessee visiting Nashville.

Kelly and Kris Ryan spent the week end with their aunt Mrs. Evelyn Scarborough.

The community extends their sympathy to Mr. and Mrs. Harlan Taylor and family of the loss of their mother Mrs. Henry Moore who passed away last week.

Mrs. George Gaulkner and son, Miss Beverly Faulkner visited Mr. and Mrs. Donald Jones on Sunday.

"MARRIAGE: Love Parsonified." Anon.

Bowers Beach (con't)

that "...we construct an open air pavillion. The kids could build it as a project. We could have crafts on display there during the summer. Let the kids build it," she said. It was taken under consideration.

Mrs. Banks acting for the absent Mayor Tuthill and the ailing John King read aloud a letter from the Army Corp of Engineers concerning the maintenance and dredging of the Delaware Bay entrance channel to the Murderkill River. See related picture and article.

School Menus

Lake Forest

- Monday, Feb. 23 Cheeseburgers, tater tots, peaches, cookie, milk.
- Tuesday, Feb. 24 Sloppy joes, buttery corn, applesauce, brownie, milk.
- Wednesday, Feb. 25 President's Table Chicken Mount Vernon, Martha's mashed potatoes, salad Monticello (carrot and raisin), Lincoln log roll with butter, Dolly's fruit pudding, Madison's milk.
- Thursday, Feb. 26 Beef stew, cole slaw, hot biscuit with butter, Jello with topping, milk.
- Friday, Feb. 27 Dismissal 1:00 Tomato soup, grilled cheese sandwich, carrot with celery sticks, peanut butter bar, milk.

Woodbridge

- Monday, Feb. 23 Flying saucers, buttered peas, chilled pears, orange juice, ice cream, milk.
- Tuesday, Feb. 24 Meat loaf with tomato sauce, mashed potatoes with gravy, hot rolls and butter, lemon pudding, milk.
- Wednesday, Feb. 25 Beef-a-roni, creamy cole slaw, apple sauce, French bread and butter, waky cake, milk.
- Thursday, Feb. 26 Chicken salad, French fries, buttered limas, hot rolls and butter, sunshine Jello, milk.
- Friday, Feb. 27 Submarine, home made vegetable soup, cheese curls, ice cream, milk.

For Remembering
from Ballou

An exquisite locked to cut the newly printed slip of embossed look. Details hand set to recall the finest.

1976-1980

"Gifts for all occasions"

At FORNEY'S
106 Lockerman St.
DOWNTOWN DOVER

#6 of a Series: The onshore impact of offshore oil How is oil and gas brought ashore?

When many East Coast residents think of oil production from the Atlantic Outer Continental Shelf, they picture tentacles of pipe rising from the ocean to enter refineries on the shoreline.

Fortunately, it won't be like that.

Amoco's experience in offshore production and onshore processing presents quite a different picture of what really happens.

If commercially producible quantities of oil or gas are found offshore, production platforms will be connected by feeder pipelines that supply a common trunk pipeline running to an onshore location. Where the water is less than 200 feet deep, the pipe will be buried under the seabed, according to government regulations. Thus the pipe will be buried out of sight at the point it is brought ashore.

If the pipeline carries crude oil, the oil may go directly to a refinery or temporary storage where it could then be shipped to a refinery by established means of transportation, such as pipeline, barge or tank car.

Natural gas is sent by pipeline generally to an onshore processing plant and then distributed via pipeline to municipal, industrial, and commercial users.

A processing plant - not necessarily close to the coast - occupying approximately 30 acres - is all that is required to handle 500 million cubic feet of natural gas a day - enough to serve the natural gas needs of a city about twice the size of Baltimore.

Any processing plant would be situated and constructed in accordance with provisions of the Coastal Zone Management Act of 1972 and state coastal zone regulations.

We want to continue to be good neighbors, good citizens, and good business partners with the people of the East Coast.

For more information, write: Public Affairs Department, Amoco Production Company, 300 East Joppa Road, Towson, Md. 21204.

Our job is yours.



In Downtown Milford

Friday Night Special

Wall's Children's Store

1/2 Price Sale

On Remaining Winter Merchandise

Lou's Bootery

10% OFF

On All Women's Black Leather Shoes

FASHION OUTLET

* Cardigan Sweaters

Reg. \$14.99 Now \$2.22

* Eye-Glass Pins

Reg. \$1.59 Now 10¢

BATA SHOES

Ladies & Misses Sneakers

\$1.87 a pair

Milford Hardware

Rubber Maid Shelf Liner * Furnace Air Conditioner

Reg \$1.29

Now 88¢

Filter Reg 89¢

Now 39¢

Friday Nights

5 p.m. - 9 p.m.

Obituaries

Joshua J. Willey Sr.
 Joshua J. Willey Sr., 63, of Milford, died Monday, Feb. 9 at the Delaware Hospital for the Chronically Ill, Smyrna, after a long illness. He was a retired poultryman.

He was separated. He is survived by two sons; George H. of Roxanna and Joshua J. Jr. of Milford; three brothers, Mark of Harrington, Harold and James, both of Milford; a sister, Myrtle Stevenson of Georgetown and four grandchildren.

Services were last Thursday afternoon at 1 at the Lofland Funeral Home, 219 S. Walnut St., Milford. Interment will be in Odd Fellows Cemetery, Milford.

Ruby E. Owens

Ruby Emma Owens, 52, of near Harrington died Feb. 16 at the University of Pennsylvania Hospital, Philadelphia.

She is survived by her husband, Herman Ray Owens, Harrington; two daughters, June Ward of Harrington, and Peggy Isenhower of Seaford; a son, John Owens of Norfolk, Va., and seven grandchildren.

Services were held Wednesday morning at 11 at the Faries Funeral Home, Dover. Interment was in Sharon Hill Memorial Park, Dover.

Minnie W. Moore

Minnie W. Moore, 85, died Wednesday, Feb. 11 at the Milford Manor Convalescent Home, after a long illness.

Mrs. Moore is survived by her husband, John Henry Moore Sr.; a daughter, Lorena Taylor of Greenwood; two sons, Arch of Georgetown, and J. Henry Jr. of Milford; a sister, Lorena Ruch of Allentown, Pa.; six grandchildren and two great-grandchildren.

Services were Saturday afternoon at 1 at the Rogers Funeral Home, Milford. Interment was in Odd Fellows Cemetery, Milford.

Rose E. Callahan

Rose E. Callahan, 77, of 4 Chestnut Drive, Meadow-

view, died Monday, Feb. 9, at Harford Memorial Hospital, Havre de Grace, after a short illness.

Her husband, Dennis, is deceased. She is survived by four daughters, Mrs. Margaret E. Palmer of Baltimore; Mrs. Violet L. Gilbert of Elkton; Mrs. Edith V. Mullins of Greenwood, and Mrs. Virona G. Palmer of Rising Sun; 18 grandchildren and 25 great-grandchildren.

Services were last Thursday morning at 11 at the First Baptist Church of Elkton, Delaware Avenue, Elkton. Interment was in Elkton Cemetery.

Elmer H. Hamstead

Elmer H. Hamstead, 75, died Wednesday at Milford Memorial Hospital, after a short illness.

Mr. Hamstead was a retired farmer. He is survived by his wife, Mabel M.; three sons, Elmer E. of Seaford, Glenn L. of Ocean City, Md., and John A. of Greenwood; a daughter, Mrs. Deane H. McKinney of Simpsonville, S.C.; three brothers, Charles M. of Vienna, W. Va.; and Roy J., and Ami M., both of Greenwood; a sister, Mrs. Ethel Wolters of Greenwood; 15 grandchildren and seven great-grandchildren.

Services were held at 2 Saturday afternoon at the Hardesty Funeral Home. Interment was in St. Johnstown Church Cemetery, Greenwood.

William N. Marvel

William N. Marvel, 74, of 713 N. Walnut St., Milford, died February 12 in the Milford Memorial Hospital after a short illness.

He retired in 1961 after nearly 40 years with the Delaware National Guard. Surviving are his wife, Grace O.; and two brothers, Wilson C., of Wilmington, and George W., of Houston.

The funeral was at 2 Monday afternoon at Berry Funeral Home, N.W. Front St., Milford. Masonic services were held the same day. Burial was in Odd Fellows Cemetery.



Miss Deborah Jean Dudkewitz and Mr. Douglas Edward Vanderwende.

Miss Dudkewitz Is Engaged

Mr. and Mrs. David L. Dudkewitz of Elkton, Maryland and Mr. and Mrs. William W. Vanderwende of Bridgeville, have the honor of announcing the engagement of their daughter and son, Deborah Jeanne Dudkewitz to Douglas Edward Vanderwende.

Miss Dudkewitz is a graduate of Elkton Senior High School and is presently a student at the University of Delaware, Newark where she is a member of Alpha Zeta honorary fraternity. She will graduate in December 1976 with a degree in Animal Science.

Mr. Vanderwende is a

graduate of Woodbridge High School, Bridgeville, and is presently engaged in farming while pursuing a degree in Agri-Business at Delaware Technical and Community College, Georgetown. He will be graduated in May 1976.

A winter 1977 wedding is planned.

Edgell C. Coates

Edgell C. Coates, 83, of near Harrington died February 15 at Milford Memorial Hospital after a long illness.

Mr. Coates, a retired farmer and formerly a carpenter with the N.B. Downing Co. of Milford, is survived by his wife, Minnie L.; a son, Ebon C., both of Harrington, and two grandchildren.

Services were Wednesday afternoon at 2 at the McKnatt Funeral Home, 50 Commerce St., Harrington. Interment was in Hollywood Cemetery, Harrington.

Dianna M. Dixon
 Dianna M. Dixon, infant daughter of Johnnie and Beverly Dixon of Marydel, died Wednesday at Kent General Hospital, Dover, after a short illness.

Surviving in addition to her parents, are her paternal grandparents, Mr. and

Mrs. Dudley Dixon of Marydel; her paternal great-grandmother, Myrtle Boyer of Crumpton, Md.; her maternal grandparents; Mr. and Mrs. Arthur Ford of Hartly; and a maternal great-grandmother, Audrey Log of Felton.

Services were held Saturday afternoon at the Church of Christ in Christian Union, Henderson, Md. Interment was in Millington Cemetery, Millington, Md.

Attend the church of your choice this week

HARRINGTON BAPTIST CHURCH

LIBERTY ST.
 REV. W.P. WATSON, PASTOR

9:45 a.m. - Sunday School
 11 a.m. - Morning Worship
 6 p.m. - Adult Choir Practice

Wed. - 6:30 p.m. Children's Choir - 2nd. and 4th Wed.
 7 p.m. Youth Choir

Thursday - 6 p.m. - RA's, GA's & Aetens
 7:30 p.m. - Prayer & Bible Study

1st. Thurs. in Feb. - Baptist Young Women at 10:30 a.m.
 2nd Sun. in Feb. - WMU Focus
 2nd. Mon. in Feb. - Baptist Women at 7:30 p.m. Southern Baptist & American Baptist luncheon at 12:30 p.m.
 2nd. Thurs. in Feb. - Sweetheart banquet at 6 p.m.
 3rd Sun. in Feb. - Church Council at 6:30 p.m.
 3rd. Wed. in Feb. - Baptist Women Council at 10 a.m.
 4th Thurs. in Feb. - Senior Citizens hymn sing, 11 a.m. to 12:30 p.m.

ASBURY UNITED METHODIST CHURCH

Rev. Alvin Williak
 10 a.m. Sunday School
 11 a.m. Morning Worship

6 p.m. Junior and Senior U.M.Y.F.
 7 p.m. Evening Worship

HOUSTON UNITED METHODIST CHURCH

9:30 a.m. Morning Worship
 10:45 Sunday School

THE UNITED METHODIST CHURCH

Greenwood
 Rev. James B. Doughten

Telephones: Office, 349-4047; Home, 349-4324

EPWORTH
 9 a.m. Worship
 9:45 a.m. Sunday School
TODD'S CHAPEL
 10 a.m. Worship
 11 a.m. Sunday School

GREENWOOD
 10 a.m. Sunday School
 11:15 a.m. Worship

ST. STEPHEN'S EPISCOPAL CHURCH

Raughey Hill Road
 The Rev. Bruce M. Shortell
 398-3710

Sunday Schedule (Beginning Sept. 14th)
 9:30 a.m. Church School and Adult Discussion
 10:45 a.m. 1st & 3rd Sunday: Holy Communion; 2nd & 4th Sunday: Morning Prayer
 Wednesday 7 p.m., Evening Prayer & Healing Service; 7:30 p.m., Bible Study
 1st Monday 7:30 p.m., Women meet
 2nd Tuesday 7:30 p.m., Vestry meeting

CHURCH OF THE NAZARENE
 Pastor
 Rev. Robert F. Burdette
 398-4193

9:45 a.m. Sunday School
 10:50 a.m. Morning Worship
 7 p.m. Evening Service

WEST HARRINGTON TRINITY UNITED METHODIST CHURCH
 Rev. Wayne Grier

Harrington
 10 a.m. Church School
 11 a.m. Worship
 United Methodist Women meet Tuesday, 7:30 p.m.
 The Our Class meets 2nd Tuesday, 8 p.m.
 United Methodist Youth meets every Sunday, 6:30 p.m.

BETHEL UNITED METHODIST CHURCH
 Andrewville

8:45 a.m. Worship every other Sunday
 9:30 a.m. Church School Summer Schedule
 1st and 3rd Sundays - Holy Communion and Service, 9 a.m.
 2nd and 4th Sundays - Morning Prayer and Service, 9 a.m.

PROSPECT UNITED METHODIST CHURCH
 Vernon

8:45 a.m. Church School
 9:45 a.m. Worship
 1st and 3rd Sunday nights, 6:30 p.m., United Methodist Youth meets.
 3rd Wednesday every month, 7 p.m., Family Night.
 4th Wednesday every month, 7:30 p.m., Administrative Board meets.

SALEM UNITED METHODIST CHURCH
 Farmington

8:45 a.m. Worship every other Sunday
 9:30 a.m. Church School

CALVARY WESLEYAN CHURCH
 Harrington

Rev. William H. Miller
 Pastor

9:45 a.m. Sunday School
 10:50 p.m. Morning Worship Service
 7 p.m. Evening Worship
 Thursday, 6:20 p.m., Girls' Choir; 7 p.m., Mid-Week Service; 8 p.m., Senior Choir

This Section is Through Courtesy of:

Compliments of

Food Rite
Quillen's Shopping Center
 Harrington

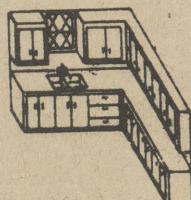
Compliments of

Quillen's Dairy Market
 Dorman St. Harrington

For Fast Results...Try The Classifieds!

Custom Cabinets by MORTON BROTHERS

- KITCHEN CABINETS
- VANITIES
- MILLWORK



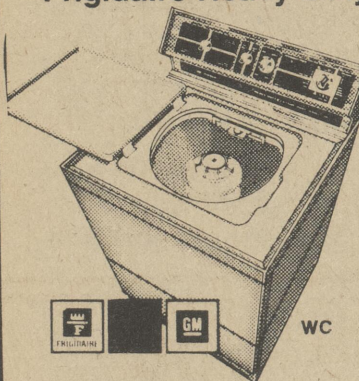
DOUG 422-5159 New Shawnee Rd., Milford, Del.

LAST BIG WEEKEND!



Offer ends Sat Feb. 21

Frigidaire Heavy Duty Washer



- Flexible 1-18 lb capacity
- Infinite water level selector
- Knits/Permanent Press/Regular Wash cycles
- 2 speeds

Now Only **\$299⁹⁵**

Frigidaire Flowing Heat Dryer



- 18-lb capacity
- Delicate plus Knits, Permanent Press, Regular settings
- Gentle Flowing Heat
- Big over-size door opening for easy loading and unloading

Now Only **\$210⁰⁰**

Buy A Pair **\$499⁹⁵**

Taylor's Hardware

Commerce & Dorman Sts.

Harrington 398-3291

QUALITY, ECONOMY go hand in hand here!

APPLIANCES



WE SELL:

- audio components
- major appliances
- Admiral color & bw tv
- Sylvania color & bw tv tower
- CB sets
- air conditioners
- antenna systems

WE SERVICE: all make tv sets all type of antenna systems

MILFORD - HARRINGTON RD. RD. Phone 422-8534/6619

L & D ELECTRONICS

Quillen Shopping Center

Harrington, Delaware

WE SELL:

- Zenith TV
- Color & BW Zenith Components Systems
- Zenith Stereo
- Magnavox Color & BW TV
- Magnavox Stereo
- Spalding Towers
- Craig Tape Players & FM Radios
- Winegard Antennas

We Service All Makes of TV Sets

SMALL APPLIANCE REPAIR

Specializing in Sunbeam & GE

Custom Lamp Repair

James Bartsch

398-3684 Harrington

GREENHOUSES

Moulton's Farms & Gardens

Road 438 - 3 mi. So. of Harrington

398-4525

NEW GREENHOUSE OPEN

Hanging Baskets

Potted Plants

Evergreen Trees Young Flowering Shrubs

Now Is The Ideal Time To Plant Flowering Shrubs and Trees

BANKING

Complete BANKING FACILITIES
 at the FRIENDLY BANK
PEOPLE'S BANK
 Commerce St. Harrington
 398-3256 MEMBER F.D.I.C.

CLOTHING



WOLLASTON'S
 CASUAL CLOTHES

SEAFORD HARRINGTON
 692-7268 398-3764

FOOD and INSURANCE

Hi-Grade Dairy
 All Dairy Products At Our Store

Homemade Ice Cream
 Pizzas
 Submarines and other Sandwiches

Phone 398-8321

97 Clark St. Harrington

Milford Bowling Lanes, Inc.

Leagues & Open Bowlers

Welcome

N.S. 113 Milford

For life, health, home and car insurance call:

W. H. Outten
 4 Commerce St.
 398-3276

NATIONWIDE INSURANCE

Nationwide is on your side. Nationwide Mutual Ins. Co. Nationwide Mutual Fire Ins. Co. Nationwide Life Ins. Co. Home Office: Columbus, O.

EQUIPMENT

TAYLOR & MESSICK, INC.

JOHN DEERE FARM EQUIPMENT
 LAWN and GARDEN EQUIPMENT
 SALES AND SERVICE
 BY TWO-WAY RADIO

Phone 398-3729



WINKLER BROTHERS EQUIPMENT

Grain Bins Steel Buildings
 Grain Dryers & Elevators

Felton Del. Call 284-4411 or 335-3351

For Listing Call 398-3206

FURNITURE

Callaway Furniture
 Awning Mfgs. & Floor Coverings

(302) 398-8858 Harrington, Del.

MUSIC



GUITARS
 ARE OUR SPECIALTY

STEELE'S MUSIC HOUSE

FELTON, DEL. 19943

TELEPHONE - 284-9849

INSTRUMENTS LESSONS

ALBERT L. STEELE - INSTRUCTOR

SPRING SPECIAL

BICENTENNIAL JEWELRY

STORES

ARGO LINOLEUM CO.

Armstrong • Congoleum
GAF • Mannington Do it yourself
 Barwick Carpets Floor Coverings Or we install.

121 N. Washington St. 422-8431 Milford, Del. 19963

Taylor's Hardware

Wallpaper Benjamin Moore Paints

Full Line of Paint & Wallpaper Supplies

Commerce & Dorman Sts. Harrington 398-3291

AUTO PARTS

Discount Auto Parts

Quillen Shopping Center

Monday through Friday 8-5:30 Saturday 8-4

SERVICE STATIONS

CASHWELL'S EXXON

TIRES ON SALE

Harrington, Delaware 398-8376

classified ads get the job done

RATE SCHEDULE

All ads in this column must be paid in advance. This is the only way in which orders will be accepted for want ads. No ad order accepted for less than \$1.25 for each insertion, 25 words or less, which includes name and address, initials and telephone number which counts as one word each.

Classified

Classified Display, per column inch	\$1.50
Public Sale, column inch	\$1.50
Card of Thanks, Memorial, per line (Minimum \$1.50)	20c
Legal Advertising, per col. inch	\$2.80

Any ad having more than 25 words, additional charge is 5c per word for one insertion. With Black Face Print or CAPITALS regular charge is 5c per word.

Phone - 302-398-3206. setaK J. sdonyeR

FOR RENT

BEAT THE high cost of vacations. Rent a Motor Home. Fully self-contained units plus air-conditioning and TV Daily and Weekly rates. Make Your Reservations Now! Recreational Vehicle Rental Center, Inc. Call 697-1400.

R4t3/11B

FOR SALE

1961 WILLEY'S JEEP FOR SALE - 2 wheel drive, HT radio/heater, 58,000 miles, 2-25 MPG, asking \$600; 14 cu. ft. GE refrigerator, asking \$45. 422-6774.

W4t3/11B

1968 FORD GALAXIE 500 Fastback Automatic, p-s, p-b, new tires, brake system, shocks, battery and mufflers. Special \$700. 697-1993.

H1t2/19B

FOR SALE AKC REGISTERED DACHSHUNDS. Miniature and standard. Snooze and Wire-Haired. All colors including rare blue. Liberty Acres Kennels. 302-349-4073. 2/26

POODLES, AKC 9 weeks, males, shots and wormed. Call after 6 p.m. 697-7708. F3t3/4B

FOR SALE FILL DIRT • TOP SOIL. DRIVEWAY DIRT. ALSO SLEWER SYSTEMS INSTALLED. PHONE 697-1694

TOP SOIL GRAVEL FILL DIRT Delivered to your area. Phone 301-758-2524. tf 1/29

STAYTON'S SELECT BORROW PIT Select fill dirt. Open 8 to 4:30 daily. Delivered or loaded on your truck. 284-9178 or 284-4348. Stf 12/15

FOR SALE Stand by and Continuous Duty Alternators. Any size PTO Models from 10-KW to 100-KW single and three phase motorized units available. Both gas and diesel. Call Hiram Stoltzfus, Harrington, Del., 1-302-398-3006. 10t3/19

RETREAD TIRES \$12.95 Any Size Wide Tracks - \$3 extra. Check our new tire prices! New Tire Guarantee

Tire King 502 S. Governors Ave. Dover, Delaware 674-1942

For Sale: Lumber Used - Excellent Shape. All Sizes - Also Doors and Windows. 422-3025. After 5 p.m. 422-6581. TF/1/29

FOR SALE BARLEY STRAW 422-5259 Mtf 1/5B

For Sale - Envelopes, 100 plain 6 3/4 env. \$1.25; 100 window 6 3/4 env. \$1.50; 100 No. 10 env. \$1.50. The Harrington Journal office.

PIANO - BIG Upright, Good condition, Ivory Keys, \$300 or best offer. Call 678-5154 or 734-3922. Lt12/19B

FOR SALE - BUILDING MATERIAL Feb. 19 to 28 Sale Golden Lawn Paneling \$4.15, Full thick 3 1/2 Insulation \$6.65 Bid. Disappearing Stairway \$29.95, White GAF Self Seal Shingles \$5.98 Bld. 1/2-4x12 Sheet Rock \$3.31 1/4 A.D. Fir Plywood \$6.96.

Houston Lumber Company, Houston, Del. 422-8158.

FOR SALE: Plywood 1/4" Finished Interior, 3/8" and 1/2" CDX Sheathing, 5/8" Exterior. This is all good quality plywood - call for price quote. Paneling - We have a selection of panels and tile board - Approximately 22 Different panels and Tileboards to choose from Priced From \$3.50 to \$6. per sheet. Siding: 12" Lap Siding, \$3 per 16' piece Lumber: Call for availability and price. Windows: 10' Bay Windows \$175 Ea. (10 only). Roofing: Shingles \$12 per square. Felt \$3.50 per roll. Misc. Other Items Too Numerous To Mention Are Available At Good Prices. **WOODSIDE SURPLUS SALES INC.**, P. O. Box 67, Woodside, Del. 19980. 1-302-697-2861 3t2/19

RED VELVET Flex-O-Steel couch and chair, \$225; Daystrom 6 chair Kitchen set \$125; 15 cu. ft. frost free freezer, \$250; 3 month old black and white 25" TV, \$125; Cushman Eagle motorcycle \$300. 284-9487. F1t2/19B

FOR SALE: Brand new hot water heater at 1/2 price and miscellaneous other items. Call at the Senior Center 398-3908. K3t3/4B

ESTHER WILLIAMS POOLS SPECIAL!! 3 handsome above grounds demonstrator pools. They include: convenient walk-around deck, fencing, carpeted patio deck, ladders and filter. Must be sold immediately! We need space for our 1976 models. Great Savings! 1st come, 1st served offer. Bank Financing Available! Call Mr. Adams 1 (302) 731-1201. Out of town call collect. Downstate below Dover call collect. Ctf2/19

SAVE \$\$\$'s on IN-GRAVE POLLS We made a great buy on left over stock from a pool distributor. We save \$\$\$'s. You save \$\$\$'s. 18...16" x 32' Pools...\$1295 each. 15...18" x 36' Pools...\$1495 each. 12...20" x 40' Pools...\$1695 each. Save now while they last. Call Mr. Davis 1 (302) 731-1202. Out of towners call collect. Downstate below Dover call collect. Ctf2/19

OPPORTUNITIES LET'S TALK ABOUT YOUR FUTURE NOW. Career opportunity for person with sales potential but not sales experience. Leads furnished. Write Box 239, Harrington, Delaware 19952. Equal Opportunity Employer. tf 5/22

VENETIAN BLIND CLEANING and repairs. Also window washing. PORTER & SONS SERVICES. 398-8756.

WINDOW & SCREEN REPAIRS Phone 398-3083 Mon. thru Thurs - 6 p.m. BILL McCOLLEY 3 Reese Ave. Harrington, Del. 7/10

General Contractor New Houses-Roofing-Siding Home Improvement "Fine Craftsmanship at Reasonable Prices." **David R. Greenly** 284-4165

Instrumental Instruction Organ, guitar, bass, piano and organ instructions. Also complete line of instruments for sale (new and used) at the Drum Pad, Felton. 284-4664. tf 8/26M

Anthony Gallo Electrical Wiring • Heating & Plumbing • Insulation & Air Conditioning • Water Conditioning • SALES & SERVICE Electric Heat, Hot Water and Hot Air Systems Phone 398-8481 - If no answer call 398-8378. tf 12/4

PAINTING Int. & Ext. Quality Work Free Estimates **CARL BEENE** 398-8821

TEXAS CHEMICAL CO. needs dependable person. Contact Harrington area protected accounts. Be you own boss. We train. Write B. E. Crawford, Pres., PANCO, Box 52, Fort Worth Tex. Mit2/19

BUSINESS INVESTMENT 35 Duplex Homes to sell, rental units. \$350,000 firm or take over existing mortgage. Located south of Camden. Call 678-3598. Btf2/5B

SERVICES OFFERED CHILD CARE will care for one child in my home 1 mile west of Felton. Must be toilet trained and walking. If interested call 284-4101. S2t2/26

Clarence J. Black HOME IMPROVEMENTS 398-8033

Big Dipper Furniture Stripping - Road 370 near Kent Center, woodsides, Del. Phone 697-3550. Refinishing supplies, helpful hints, 9 a.m. to 7 p.m. or by appointment, closed Sunday. Bf15/2M

Delmarva Engineering and Construction Company Inc. 1 call does it all. Residential-Commercial Milford 422-3025 TF/1/29

General Contractor New Houses-Roofing-Siding Home Improvement "Fine Craftsmanship at Reasonable Prices." **David R. Greenly** 284-4165

Instrumental Instruction Organ, guitar, bass, piano and organ instructions. Also complete line of instruments for sale (new and used) at the Drum Pad, Felton. 284-4664. tf 8/26M

Anthony Gallo Electrical Wiring • Heating & Plumbing • Insulation & Air Conditioning • Water Conditioning • SALES & SERVICE Electric Heat, Hot Water and Hot Air Systems Phone 398-8481 - If no answer call 398-8378. tf 12/4

PAINTING Int. & Ext. Quality Work Free Estimates **CARL BEENE** 398-8821

Earl L. Yoder GENERAL CONTRACTOR New Homes • Additions • Panelling • Cabinets • Siding • Roofing • Ceiling • Tile Harrington, Del. 398-3750

VENETIAN BLIND CLEANING and repairs. Also window washing. PORTER & SONS SERVICES. 398-8756.

WINDOW & SCREEN REPAIRS Phone 398-3083 Mon. thru Thurs - 6 p.m. BILL McCOLLEY 3 Reese Ave. Harrington, Del. 7/10

General Contractor New Houses-Roofing-Siding Home Improvement "Fine Craftsmanship at Reasonable Prices." **David R. Greenly** 284-4165

Instrumental Instruction Organ, guitar, bass, piano and organ instructions. Also complete line of instruments for sale (new and used) at the Drum Pad, Felton. 284-4664. tf 8/26M

Anthony Gallo Electrical Wiring • Heating & Plumbing • Insulation & Air Conditioning • Water Conditioning • SALES & SERVICE Electric Heat, Hot Water and Hot Air Systems Phone 398-8481 - If no answer call 398-8378. tf 12/4

PAINTING Int. & Ext. Quality Work Free Estimates **CARL BEENE** 398-8821

Will do babysitting or ironing in my home. Call 398-8553 or 398-3123. J1t2/19B

TAXES H & R Tax Service We do personalized taxes as well as farms and small businesses • Your house or • our office • Reasonable Rates **Call 284-9547**

Piano Tuning Player Piano and Reed Organ Specialty **ED LITTLE Piano Technician** 22 Manor Drive Dover, Del. 19901 734-5190 L13t1/29B

REAL ESTATE CASH FOR REAL ESTATE - WE BUY Homes, Farms, Lots and land - Anywhere, in any condition. Quick settlement. Allied Associates. 422-7633. At19/30M

For Sale: Modern chicken farm. 87,000 capacity. 9.4 acres. Three miles east of Seaford, Del. Houses in unusually good repair. Modern and in excellent condition. Three bedroom home plus two car garage and shop. Good contract with a reliable company. Sizemore & Ellis 1-302-629-6688 TF1/29

General Contractor New Houses-Roofing-Siding Home Improvement "Fine Craftsmanship at Reasonable Prices." **David R. Greenly** 284-4165

Instrumental Instruction Organ, guitar, bass, piano and organ instructions. Also complete line of instruments for sale (new and used) at the Drum Pad, Felton. 284-4664. tf 8/26M

Anthony Gallo Electrical Wiring • Heating & Plumbing • Insulation & Air Conditioning • Water Conditioning • SALES & SERVICE Electric Heat, Hot Water and Hot Air Systems Phone 398-8481 - If no answer call 398-8378. tf 12/4

PAINTING Int. & Ext. Quality Work Free Estimates **CARL BEENE** 398-8821

Earl L. Yoder GENERAL CONTRACTOR New Homes • Additions • Panelling • Cabinets • Siding • Roofing • Ceiling • Tile Harrington, Del. 398-3750

VENETIAN BLIND CLEANING and repairs. Also window washing. PORTER & SONS SERVICES. 398-8756.

WINDOW & SCREEN REPAIRS Phone 398-3083 Mon. thru Thurs - 6 p.m. BILL McCOLLEY 3 Reese Ave. Harrington, Del. 7/10

General Contractor New Houses-Roofing-Siding Home Improvement "Fine Craftsmanship at Reasonable Prices." **David R. Greenly** 284-4165

Instrumental Instruction Organ, guitar, bass, piano and organ instructions. Also complete line of instruments for sale (new and used) at the Drum Pad, Felton. 284-4664. tf 8/26M

Anthony Gallo Electrical Wiring • Heating & Plumbing • Insulation & Air Conditioning • Water Conditioning • SALES & SERVICE Electric Heat, Hot Water and Hot Air Systems Phone 398-8481 - If no answer call 398-8378. tf 12/4

PAINTING Int. & Ext. Quality Work Free Estimates **CARL BEENE** 398-8821

Earl L. Yoder GENERAL CONTRACTOR New Homes • Additions • Panelling • Cabinets • Siding • Roofing • Ceiling • Tile Harrington, Del. 398-3750

PUBLIC NOTICES

Penn Fiber and Specialty Co. of Greenwood intends to extend its warehouse space by 100 feet, width to be 24 feet located south of main building. P1t2/19

SHERIFF'S SALE OF VALUABLE REAL ESTATE

By virtue of a writ of Levari Facias, for the sale of land to me directed, will be exposed to public sale by way of public vendue at the front door of the Farmers Bank, at the intersection of Rts. 113 and 14, Milford, Kent County, State of Delaware, on **TUESDAY, FEBRUARY 24, 1976** at 1 p.m. Daylight Saving Time.

ALL that certain tract, piece and parcel of land, lying and being in City of Milford, Kent County and State of Delaware, fronting on the northwesterly side of the 160.00 foot right of way of U. S. Route 113, 18 feet from the westerly edge of the southbound lane thereof, adjoining lands of NKS Distributors, Inc. and other lands of grantor, and more particularly described as follows:

BEGINNING at an iron pipe at aforementioned northwesterly right of way of U. S. Route #113 and at the north-easterly corner of lands of NKS Distributors, Inc.; thence running with said lands of NKS Distributors, Inc. 36 degrees 27 minutes 10 seconds West 500.00 feet to an iron pipe on line of other lands of grantor; thence proceeding with other lands of grantor the following two courses: 1. North 12 degrees 42 minutes 50 seconds East 300.00 feet; and 2. South 46 degrees 27 minutes 10 seconds East 500.00 feet to an iron pipe at aforementioned right of way line of Route #113; thence finally running with said right of way of Route #113 south 42 degrees 42 minutes 50 seconds West 500.00 feet to the Purchase.

AND BEING a part of the same lands and premises conveyed unto M. & T. Inc., a corporation of the State of Delaware, by deed of George H. Draper, Jr., et al, bearing date October 20, 1964 and of record in the office of the Recorder of Deeds in and for Kent County and the State of Delaware in Deed Record Book S, Vol. 23, at page 134.

Terms of Sale: 20% day of sale and the balance on March 1, 1976. Sale subject to confirmation by the Superior Court and also subject to a 2% Delaware Realty Transfer Tax; 1% to be paid by the Seller and 1% by the Purchaser.

Seized and taken in execution as the property of Stephen Patmon, trading as A & S Realty, and Stephen Patmon, individually, and will be sold by Sheriff's Office, **CARL M. WRIGHT** Sheriff January 30, 1976. 3T2/19

SHERIFF'S SALE OF VALUABLE REAL ESTATE By virtue of a writ of Alias Levari Facias, for the sale of land to me directed, will be exposed to public sale by way of public vendue located on Route 13, Harrington, Kent County, State of Delaware, on **MONDAY, MARCH 8, 1976** at 1:00 P.M. Eastern Standard Time.

Parcel No. 1 ALL that certain tract, piece or parcel of land and premises, without improvements thereon, situated on the east side of the original line of U.S. Route 13 leading from Dover to Harrington in Misspillion Hundred, Kent County and the State of Delaware, and more particularly described by metes and bounds, courses and distances as follows, to-wit:

BEGINNING at a point in the center of Brown's Branch said point being about fifty-seven (57) feet in a southeasterly direction from the center line of the original 60 foot right-of-way line of U.S. Route No. 13 and said point being in the right-of-way line of the original line of U.S. Route No. 13 leading from Dover to Harrington, thence running with said new east right-of-way line on a curve to the left with a radius of 17,154.8 feet, in a southerly direction a distance of 285.2 feet to a corner in said new east right-of-way line of lands formerly of Helen Billings; thence running with lands formerly of Helen Billings south 73 degrees east 170.5 feet to a corner for this parcel and other lands formerly of Elizabeth W. Shaw, et al; thence running with other lands formerly of Elizabeth W. Shaw, et al; south 73 degrees east 129.5 feet to a corner for this parcel, for other lands formerly of Elizabeth W. Shaw, et al and in line of lands formerly of Herman Brown; thence running with lands formerly of Brown north 31 degrees 15 minutes east 225 feet to a point in the center of Brown's Branch, said point being a corner for this parcel and lands formerly of Brown; thence running with Brown's Branch in a northwesterly direction about 427 feet to the place of beginning, and containing 1.54 acres of land be the same more or less EXCEPTING THEREFROM HOWEVER 0.736 acres of land conveyed unto the State of Delaware by Deed of Fount Billings, widower, in Deed Record Book Y, Volume 20 at Page 414, in the aforesaid Recorder of Deeds Office; the land hereinabove excepted constituting a portion of the northbound lane of U.S. Route No. 13 which divides the lands and premises hereinabove described, with the bulk of said lands lying between the two lanes of the aforesaid Dual Highway, and a small portion of the said lands and premises lying east of and abutting on the northbound lane of the aforesaid Dual Highway.

AND BEING the same lands and premises conveyed unto Wm. R. Morris, Inc., a corporation of the State of Delaware, by deed of John Henry Bullock, et ux, bearing date August 15, 1966 and of record in the office of the Recorder of Deeds in and for Kent County in Deed Record Book N, Vol. 24, at page 121.

Parcel No. 2 ALL that certain tract, piece or parcel of land situated in Misspillion Hundred, Kent County and State of Delaware, and lying on the east side of the State Highway (U.S. Route 13), leading from Dover to Harrington, approximately one-half mile north of the intersection of the aforesaid highway with the Harrington-Milford State Highway, and more particularly described as follows:

BEGINNING at a point where an iron pin is now set along the most easterly right of way of said highway, said point being distant two hundred eighty-five and two-tenths (285.2) feet south of the center of Brown's Branch Ditch, when measured along the said east right of way line, and two hundred eighty-nine (289) feet from the center of the concrete bridge over said ditch, when measured south along the center line of said highway, said point being a new corner now established for this lot and for lands now or formerly of James Gordon Smith and Benjamin I. Shaw; thence south seventy-three (73) degrees east a distance of one hundred eighty-seven and five-tenths (187.5) feet and running across high land in part and partly across Meadow land, establishing a new line separating this

PUBLIC NOTICES

lot from lands now or formerly of the said Smith and Shaw to another new corner now established at an iron pipe pin now set; thence turning south south seven-tenths (77) degrees west a distance of one hundred eighty-seven and five-tenths (187.5) feet and thus running across the said Meadow, separating this lot from other lands now or formerly of the said Smith and Shaw to another new corner now established at another iron pipe pin now set; thence turning north seventy-three (73) degrees west running across Meadow land in part and partly across high land a distance of one hundred eighty-seven and five-tenths (187.5) feet establishing another line separating this lot from other lands now or formerly of the said Smith and Shaw, said land having a building erected thereon now occupied by the Bond Bakers, and being distant fifty-four and two-tenths (54.2) feet north of the Bond Bakers building, said line running to a point along the east right of way of said highway to an iron pipe pin now set for another new corner, and being distant thirty (30) feet east of the said road center; thence north seven-tenths (77) degrees east a distance of one hundred eighty-seven and five-tenths (187.5) feet and running along the said east right of way of said highway back to the place of beginning and estimated to contain an area of sixteen thousand four hundred five (16,405) square feet of land, be the same more or less, as surveyed by J. E. Haddaway on May 13, 1940; the said lot having a frame building erected thereon and now used as a restaurant.

AND BEING the same lands and premises conveyed unto John W. Emory Industrial Equipment Co., a corporation of the State of Delaware, by deed of Wm. R. Morris, Inc., a corporation of the State of Delaware, bearing even date and intended to be forthwith recorded in the office of the Recorder of Deeds in and for Kent County and the State of Delaware.

No Improvements. Terms of Sale: 20% day of sale and the balance on April 5, 1976. Sale subject to confirmation by the Superior Court and also subject to a 2% Delaware Realty Transfer Tax; 1% to be paid by the Seller and 1% by the Purchaser.

Seized and taken in execution as the property of John W. Emory Industrial Equipment Co., a Delaware Corporation, and will be sold by Sheriff's Office, **CARL M. WRIGHT** Sheriff February 13, 1976. 3T3/4

TRUSTEE'S SALE OF VALUABLE REAL ESTATE Pursuant to an Order of the Court of Chancery of the State of Delaware, in and for Kent County, in proceedings to partition the real property of Mary A. Morris, Emma Howard, Laura Jones (Anderson), Walter E. Anderson, Della M. Parker, Dorsey Parker, Lattitia Wright, Robert Ross, William Ross, Linkford Ross, William Ross, Charles Thomas, Carl Anderson, Leon Lofland, James E. Anderson, Selma E. Anderson, Carolyn Anderson, Elwood Morris, Mildred Ross, Marion Benson, Anna Piper, Helen Harper, Paul Smith, Sharetta Smith, Edith Brown, William Henry Jones, I will expose to sale by way of public vendue or auction on Friday, 27 February, 1976 at 12 noon E.S.T. at the premises situated in the City of Harrington, Kent County, State of Delaware, located in the center of the said Church Street, at a corner for the land hereby conveyed and the land now or formerly of John D. Brown, thence; with an old fence north 6 degrees 15 minutes east 222 feet to an iron pipe driven for a corner, a corner for this land and land now or formerly of John D. Brown; thence with other land now or formerly of John D. Brown, north 83 degrees and 30 minutes west 50 5/10 feet to a post, a new corner thereby established separating this land from land now or formerly of Clara L. Hicks; thence with a line, south 6 degrees 15 minutes west 222 feet to the center to said Church Street, a corner for this land and now or formerly of Clara L. Hicks, a stone set on west side of street in line with the center of said Church Street south 83 degrees and 30 minutes east 50 5/10 feet to the point and place of beginning, containing approximately eleven thousand two hundred and eleven (11,211) square feet of land be the same more or less, according to a survey of May 12, 1924.

AND BEING the same lands and premises conveyed unto Lorenzo Collins and Helen Collins, his wife, by deed of Clara L. Hicks and James Hicks, her husband, bearing date 4 November, 1941 and of record in the office of the Recorder of Deeds in and for Kent County, in the State of Delaware, in Deed Record Book Z, Volume 15, Page 78.

TERMS OF SALE Twenty percent (20%) of the purchase price must be paid in cash by the Purchaser at the time of the sale. The balance to be paid in cash on or before March 19, 1976, at 1:30 p.m. into the Court of Chancery in and for Kent County. The percentage paid on day of sale will be treated as a down payment purchase price if other terms of sale are complied with; otherwise, it will be forfeited for noncompliance and treated as liquidated damages.

NOTICE TO CREDITORS NOTICE in compliance with Delaware law is hereby given that the share or interest of Mary A. Morris, Emma Howard, Laura Jones (Anderson), Walter E. Anderson, Della M. Parker, Dorsey Parker, Lattitia Wright, Robert Ross, William Ross, Linkford Ross, William Ross, Charles Thomas, Carl Anderson, Leon Lofland, James E. Anderson, Selma E. Anderson, Carolyn Anderson, Elwood Morris, Mildred Ross, Marion Benson, Anna Piper, Helen Harper, Paul Smith, Sharetta Smith, Edith Brown, and William Henry Jones in the hereinabove described parcel will be sold as above set forth, and all persons having or claiming any lien or encumbrance against or affecting the share or interest of the said Mary A. Morris, Emma Howard, Laura Jones (Anderson), Walter E. Anderson, Della M. Parker, Dorsey Parker, Lattitia Wright,

PUBLIC NOTICES

Robert Ross, William Ross, Linkford Ross, William Ross, Charles Thomas, Carl Anderson, Leon Lofland, James E. Anderson, Selma E. Anderson, Carolyn Anderson, Elwood Morris, Mildred Ross, Marion Benson, Anna Piper, Helen Harper, Paul Smith, Sharetta Smith, Edith Brown, and William Henry Jones are hereby notified to appear in the Court of Chancery in and for Kent County and State of Delaware, at the Kent County Courthouse, The Green, Dover, Delaware, March 19, 1976 at 1:30 p.m. the return day of the sale, and make proof of claim and the amount due thereon.

All persons having or claiming any liens or encumbrances against or affecting the share of interest of any of the parties above named in the premises to be sold make proof thereof at the sale scheduled on the above date and time. **CARL F. PRETTYMAN, Auctioneer WILLIAM WAGNER, ESQUIRE Trustee BROWN, SHIELDS & BARROS**

NOTICE In pursuance of an order of **RALPH R. SMITH**, Register of Wills, in and for Kent County, Delaware, dated February 11 A.D. 1976 notice is hereby given of the granting Letters Testamentary on the estate of Eva M. Raughley on the 11th day of February A.D. 1976. All persons having claims against the said Eva M. Raughley are required to exhibit the same to such Executor within six months after the date of the granting of such Letters, or abide by the law in that behalf, which provides that such claims against the said estate not so exhibited shall be forever barred.

John W. Raughley Executor of the Estate of Eva M. Raughley **RALPH R. SMITH** Register of Wills 3t3/4

NOTICE The Kent County Levy Court requests bids for the following furniture: Bid #1 - 6 Desks, approximately 30" x 40", walnut in color, single row of drawers. Desks must be of style and appearance suitable for use within conference meeting room. Full description and earliest date of delivery must be included in bid. Bid #2 - 6 Swivel Chairs with arms. Chairs must be upholstered and covered with smooth surface material suitable for executive type chairs and in a color compatible to walnut furniture. Full description and earliest date of delivery must be included in bid. All bids must be delivered to the Deputy Clerk of the Kent County Levy Court no later than 4 p.m. on Tuesday, Feb. 24, 1976. Bid openings will take place at 7:50 p.m. Tuesday, Feb. 24, 1976 at the CVLX Court meeting in the Civil Defense Conference Room. The Kent County Levy Court reserves the right to refuse any and all bids.

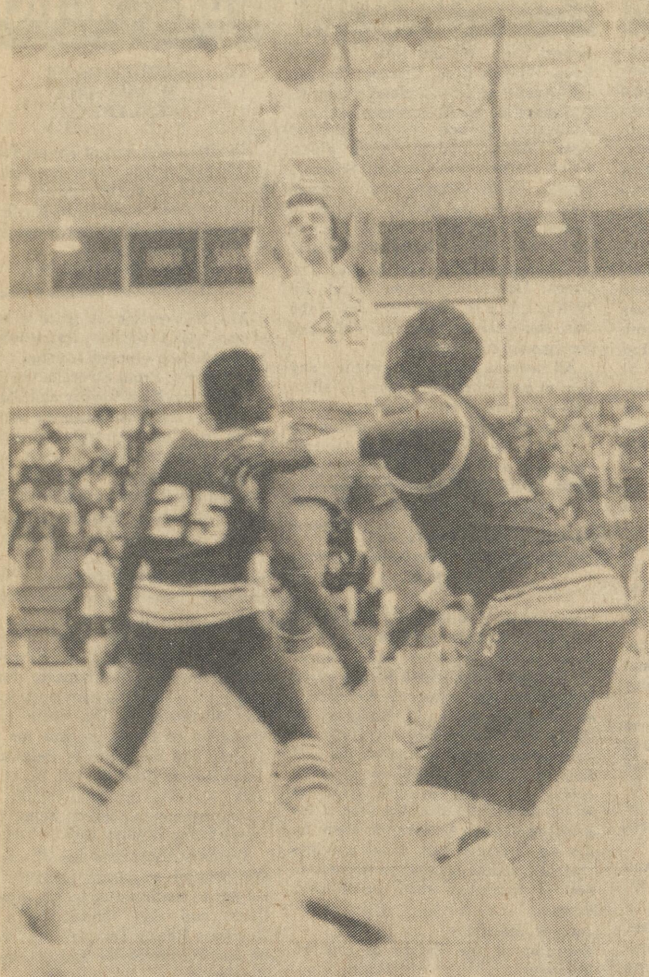
Wm. Paskey, Levy Court President **John McKenna, Committee Chairman** **FOR SALE** GET UP NIGHTS? BACKACHE, Leg pains, smarting may warn of functional kidney disorders - "Danger Ahead." FLUSH kidneys, REGU. LATE passage with gentle BUKETS 3 tabs-a-day treatment. Feel GOOD again or your 50c back in 12 hours at any drug counter! NOW at Harrington Pharmacy. 3T2/19

FOR SALE GET UP NIGHTS? BACKACHE, Leg pains, smarting may warn of functional kidney disorders - "Danger Ahead." FLUSH kidneys, REGU. LATE passage with gentle BUKETS 3 tabs-a-day treatment. Feel GOOD again or your 50c back in 12 hours at any drug counter! NOW at Harrington Pharmacy. 3T2/19

ABSOLUTE AUCTION - OF - **Tractors & Farm Machinery Trucks & Industrial Equipment** The Largest Annual Spring Auction on the Del-Mar-Va Peninsula **THURSDAY, FEBRUARY 26, 1976** Starting 10:00 o'clock A.M. Sharp Rain or Shine We expect to have a large assortment of Tractors, Tillage Tools, Harvesting Machines, Trucks and Industrial Equipment. **"CONSIGNMENT OPEN TO EVERYONE"** If You Have Tractors or Machines To Sell... Plan to Consign Them Today. Consignments Will Be Received On Monday, Tuesday, and Wednesday, February 23, 24 and 25, 8 A.M. to 5 P.M. (No Machines Will Be Listed On Day of Sale). **Location:** 173 mile south of old site next to the Happy Hoe Garden Center. **South duPont Highway - U.S. 13 - P.O. Box 531 Dover, Delaware - 734-2871 - 734-7109** "Complete Auctioneering Service Any Place On The Del-Mar-Va Peninsula" **CRAWFORD J. CARROLL, AUCTIONEER**

ARE YOU still Playing the NAME GAME? No winner in the Name Game last week. You can win. Just keep watching and keep playing! Just look for your name in the Journal. Find it backwards, call us by noon on Tuesday. If you are a subscriber, the prize is \$10. Otherwise, the prize is \$5. This week there is one name in the paper, hidden in an ad. Look carefully, and good luck.

ARE YOU still Playing the NAME GAME? No winner in the Name Game last week. You can win. Just keep watching and keep playing! Just look for your name in the Journal. Find it backwards, call us by noon on Tuesday. If you are a subscriber, the prize is \$10. Otherwise, the prize is \$5. This week there is one name in the paper, hidden in an ad



Lake Forest's Neal Smith tries a jump from the foul line in the Spartans 46-41 victory over Smyrna last Friday night.



Sam Carey puts it up on the boards to add two more points in the victory against Smyrna last Friday night, 46-41.

Spartans Still Top Southern Division

by Millard Ellingsworth III
Lake Forest High School's boys basketball team stayed atop its division, despite a loss to Indian River, by squeaking past Smyrna, 46-41 Friday night.

lost to Indian River in the final seconds on a shot by Wesley Townsend.

Sam Carey, center, led the Spartans attack with 14 points. He was followed by Frank Corsey-12, Ron Shockley-10, Herbie Jarrell and Bill Moore with six each.

Indian River squeezed past Lake Forest last Tuesday, 51-50. The Spartans led the Indians all night long but

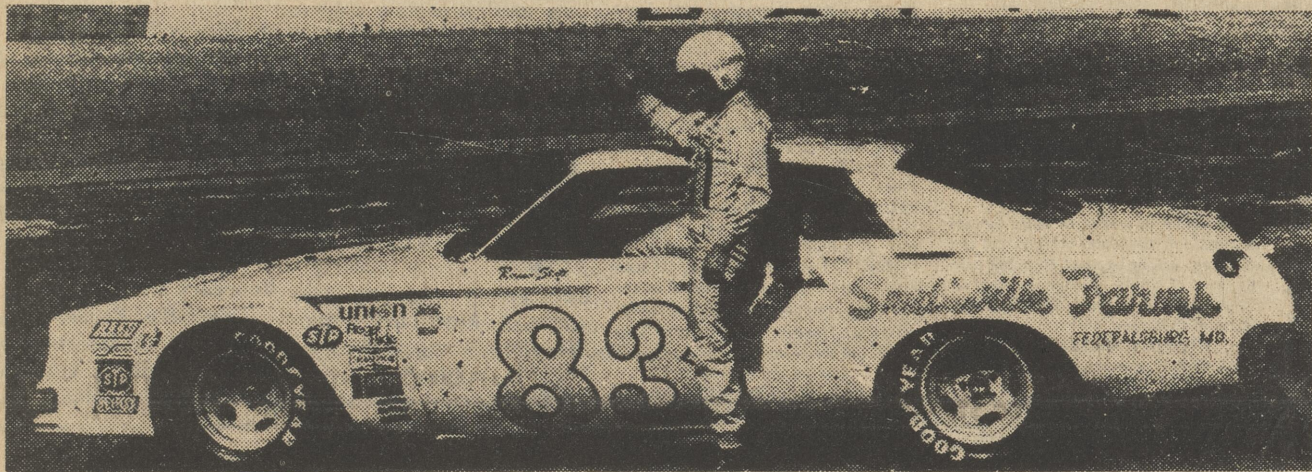
Leaving this defeat behind Lake Forest came back to beat Smyrna Friday

night. Scores didn't come very often, but the Spartans managed to find a few more than the Eagles. Sam Carey again led the Spartans with 10 points followed by Ron Shockley's eight and Charlie Smith's six.

The Spartans are presently 10-4 and should remain at the top unless they are upset. Their last four games

are against Laurel, at Laurel; Delmar, at home; Woodbridge, at Woodbridge; and Sussex Central, at Sussex.

These teams should prove little or no threat to the Spartan's first place standing. The true test will come if they go to a conference championship game, Wednesday, March 3.



Pictured above is Ramo Stott driver of car number 83 in the Daytona "500". Stott's car was sponsored by

Taylor and Messick of Harrington. The car won the pole position when the three cars ahead of him were disqualified. NATIONAL SPEED SPORT NEWS

Girls Are Back In Competition

by Millard Ellingsworth III
Woodbridges 37-31 victory over Indian River placed the Spartans back in hopes of a division and

possibly conference championship Friday night.

Indian River has finished its season 8-4 atop the Southern Division, but both

Lake Forest and Woodbridge have games to play yet. If both of these teams win, as most likely they will, a three way tie will result.

The Spartans play last place Laurel, while the Raiders play Dover Air Base, who is one spot over Laurel.

After Lake Forest's loss to Indian River last Tuesday, chances for a championship of any sort looked glum. The Spartans led most of the way, though never by a large margin. At half time, they led by one point, 17-16.

Entering the fourth quarter, the girls still held on to their one point lead, but with 35 seconds to go, Indian River's Sandy DeLoach sank two free throws which gave the Indians a 41-40 victory.

Top Lake Forest performers were Anna Jackson with 18 points and Cheryl

Lissy with 10 points. While Indian River made what may have been a fatal step, the Spartans walked

come out on top due to extremely top-sided scoring.

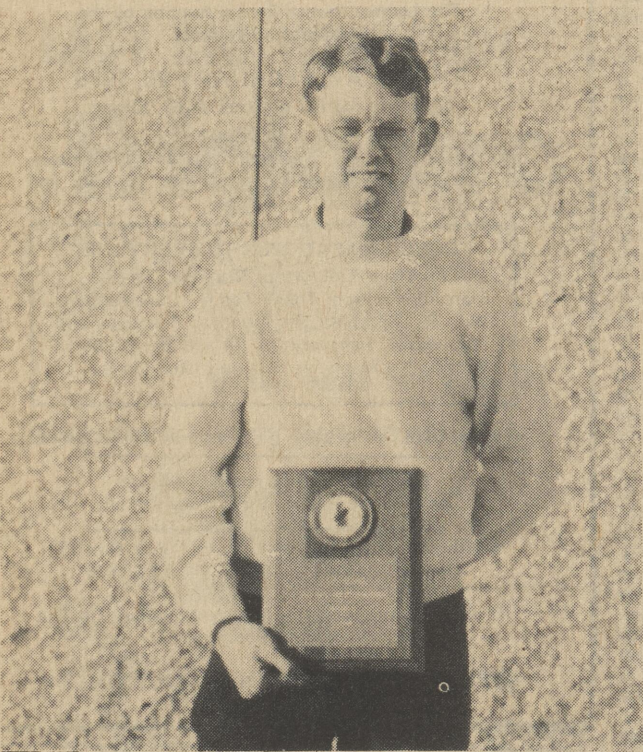
In the first quarter, the Eagles led the Spartans

10-4. Lake Forest came back scoring 10 to Smyrna's two in the second quarter making the half time score 14-12, Lake Forest. The Spartans continued to outscore Smyrna 25-16 in the second half to

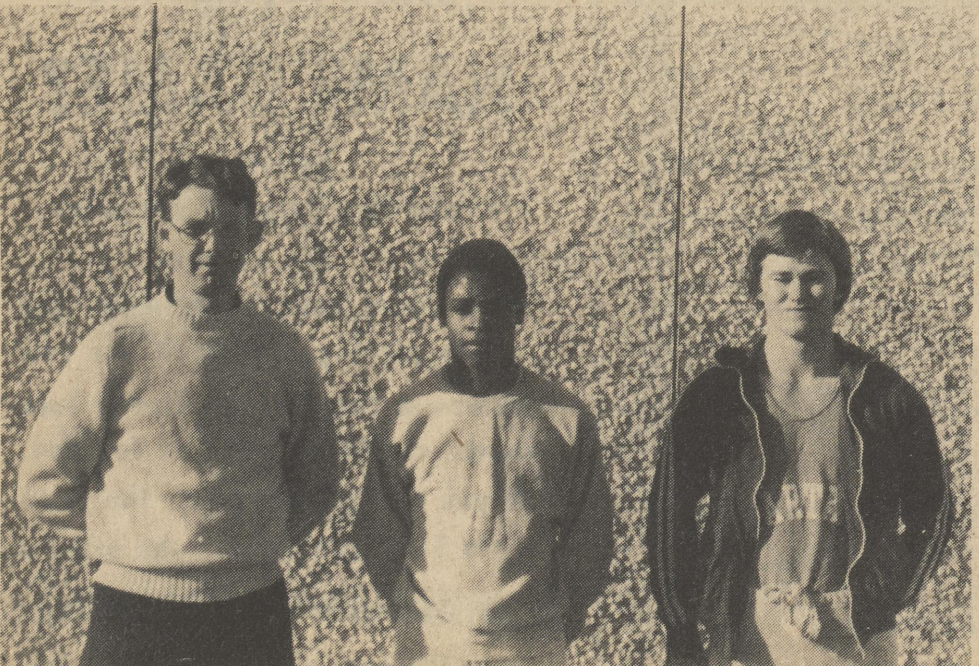
past Smyrna. It was hard to figure who would eventually

assure them of 39-28 victory Cheryl Lissy, Cindy Dukes, and Anna Jackson all scored 10 points for the Spartan effort.

The girls will have to keep playing this come-from-behind, go-get'em ball as it seems there will be several division playoffs before heading to the previously scheduled February 19 conference championship.



Lake Forest Cross-Country coach Jim Blades stands with the plaque which was presented to him as one of seven downstate coaches to win a state championship. Blades was so honored at the Lower Delaware Gridiron Club banquet held earlier in February.



Pictured above are the members of the Lake Forest Cross-Country team that made the all-conference team this past year. They are [l-r] Jim Blades, Dan Parker, and Chuck Carter.

Farrow Realty

313 South State Street

Land

Dover, Delaware

Residential

734-5758

Investment

New Listing

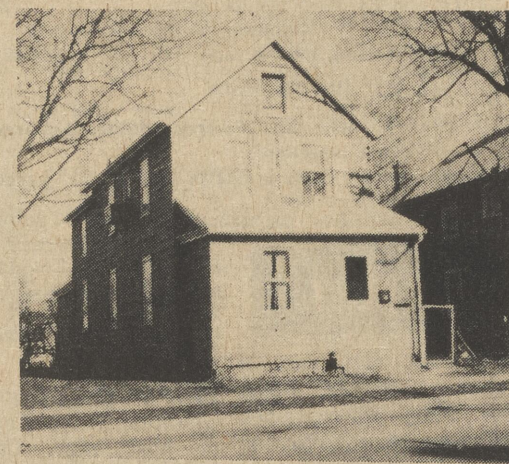
• 4 bedroom, 2 story older home in Harrington, Good neighborhood and neighbors. Will go FHA. 17,500.

• Harrington: Nice residential home in nice neighborhood. Possible multi-family dwelling.

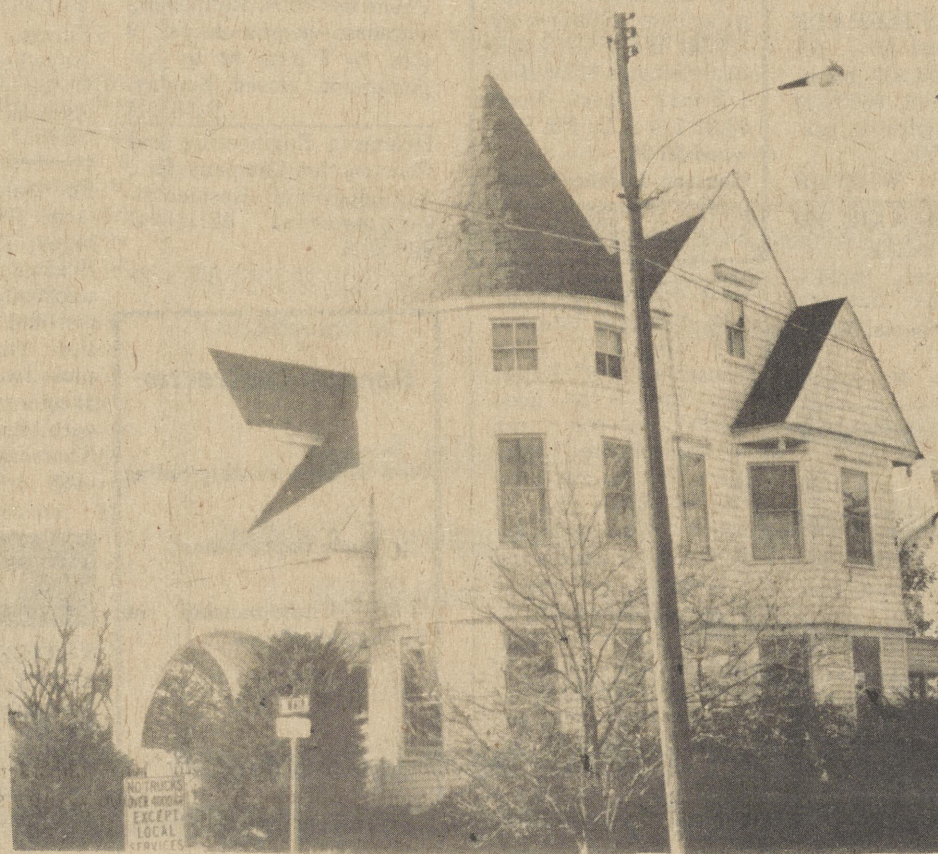
• Harrington: Large lot on Thomas Street. 114 x 114 ft. Ed.

• Commercial Building, 60' x 200', between with 1 acre of ground.

New Listing



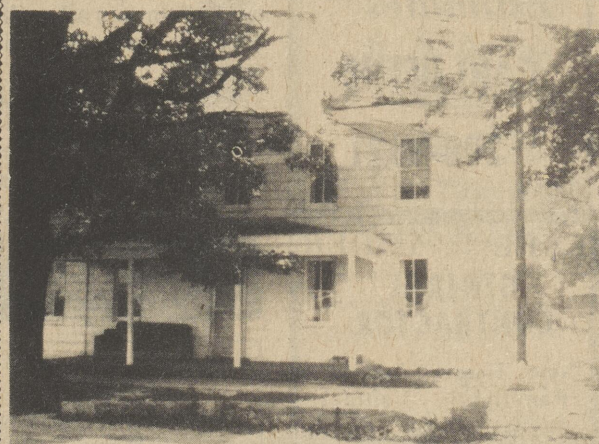
• 414 Walnut Street, Bridgeville, Delaware Maintenance free Inside and Out. Real Good Buy At \$18,500 3 bedrooms, fenced yard, lots of utility and storage space, good neighborhood.



• Like to own your own CASTLE. Then see this classic 9 room home in Bridgeville with beautiful hardwood floors. Now 2 apts. can convert to single family. Plaster walls -- fireplace. 2 Baths -- two 1/2 baths. Tiffany glass windows. It's nice--see it. Good buy. Call Terry Noble 349-5107



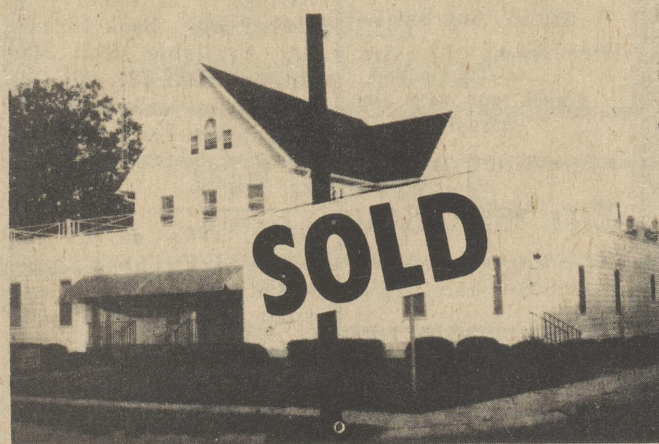
• West of Greenwood- Beautiful hillside home on a 1 1/2 acre wooded lot. 3 bedroom, 2 car garage, fireplace, dishwasher, \$59,500.



Older Home in Farmington Alum. siding, some Panelling. Good buy at \$11,500.

• Wooded Lots In Viola 2 Acres plus \$3000 per acre.

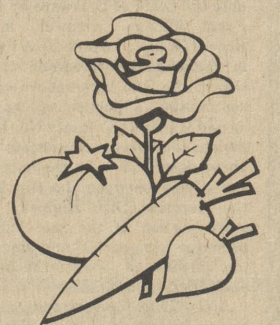
Broker Harry G. Farrow, Jr. 398-3250



• Suitable for home and business or can be converted to an apartment house. 3 Zoned, hot water heating system, central air, hardwood floors, 2 car garage with concrete floor and second floor suitable for another apartment

Sales Consultants

Barbara Elliott 678-2647
Emma Craft 697-1613
Terry Noble 349-5107



for lawn and garden insects... Spectracide

The only insecticide you need to get chinch bugs, sod webworms, white grubs, cutworms, leafhoppers, aphids, and more. A simple, sensible way to control a wide range of bugs. See us for Spectracide insecticide...

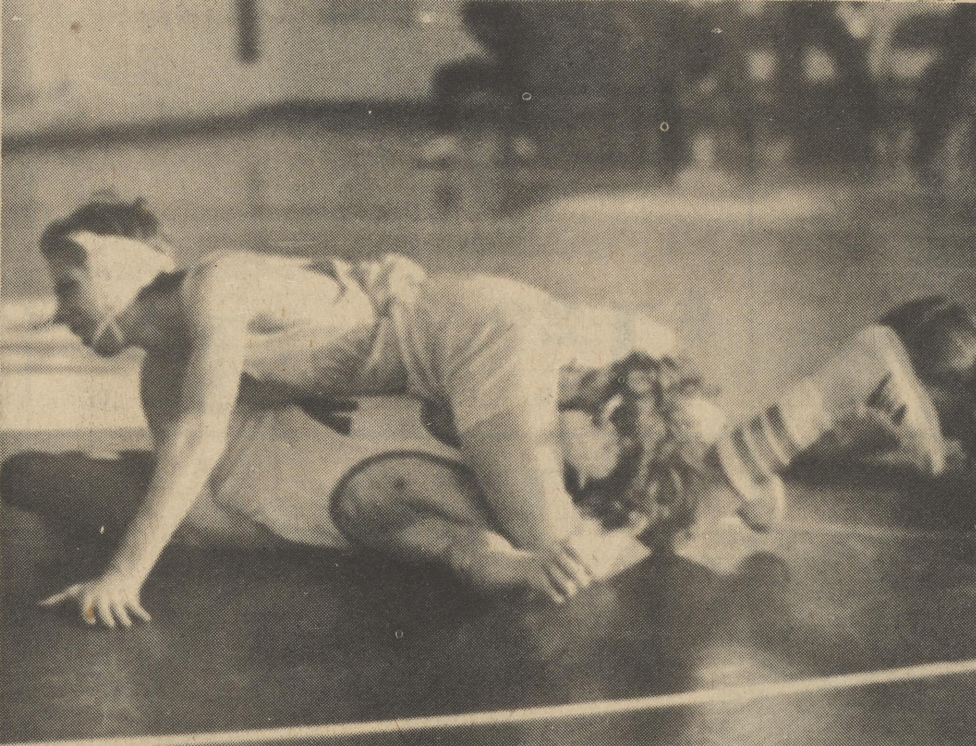
the all-purpose insecticide. WELCH'S SEED SERVICE

398-3635

Vernon Rd. Harrington

SPORTS

KEITH S. BURGESS, Sports Editor



Spartan Kick Mertz (top) tries desperately to pin Woodbridge's Mike Richards but fell just short as he lost a 9-8 decision to the unbeaten Raiders.

Photo by Ray Blanchette

Conference Tournament This Weekend

Spartan Grapplers Edge Woodbridge

by Ray Blanchette

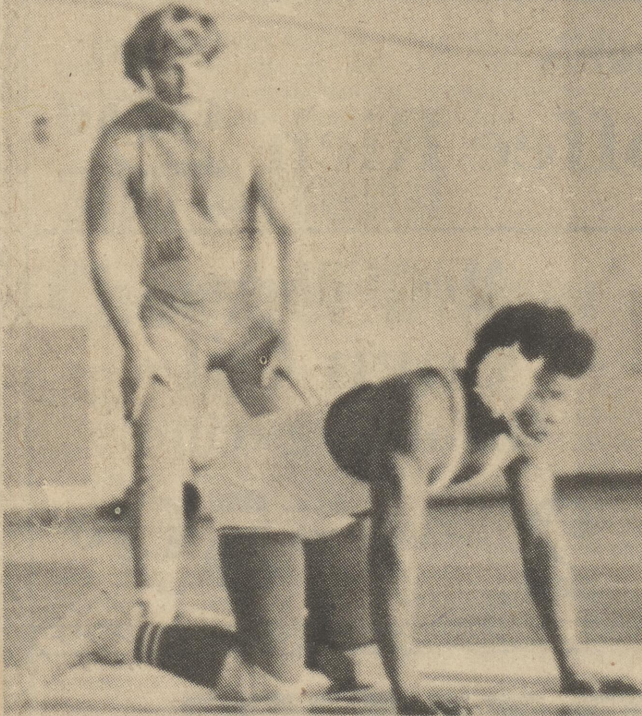
Thanks to late heroics by Perry Thomas the Lake Forest Spartan wrestling team captured their second victory of the season by a slim 27-23 margin over Woodbridge.

In a match held Saturday afternoon at Woodbridge the Spartans managed to defeat the 3-8 Raiders thanks to the clinching pin by previously winless Perry Thomas. With the score 21-20 entering the 98 pound match Thomas wasted little time in gaining the win as he won by a pin only 23 seconds into the second period.



Spartan hero Perry Thomas takes a drink following his match-clinching pin win.

Lane Lapinsky kept his fine season intact by opening the match with a hard fought 12-6 victory over Woodbridge's Correll. Lapinsky has lost but one match in the season and should place high



Lake Forest wrestler Dean McCombs prepares to take his position in a match last Saturday against Woodbridge. His opponent who was the eventual victor is Leroy Tingle.

Raiders had kept his undefeated season intact by defeating Jamie Simpson of the Spartans, 13-0. Frisy and Simpson probably will both finish in the top three of the conference and thereby earn a trip to the State Tournament the following week. Last season Simpson was a third place finisher in the conference.

The 115 match featured another two tough competitors as Woodbridge's undefeated Mike Richards took on the once defeated Rick Mertz. Richards quickly took the lead as he exchanged two point takedowns with Mertz for one point reverses. But late in the second period Mertz started to take charge and held Richards on his back but couldn't get a pin call from the referee. Mertz picked up three points for a near fall at the end of the match but still fell one point short as he lost 9-8. The 119 pound match saw the Spartans pick up their first victory of the season in this weight class as Alex Lapinsky won by default over Fields of Woodbridge. It was a rough match from the start and eventually ended when Fields suffered a broken arm.

Louis Hendricks of the Spartans picked up his second win of the season this time by a pin. Hendricks still has a shot at being a letter winner on the season but must have either a superior

young wrestling career as he came from behind to defeat Drew Hunsinger of Milford. Hunsinger came out and started using a move Sussex Central's Steve Bastianelli is famous for. That is getting the takedown which is worth two points and then letting the opponent escape which is worth only one. It backfired in this case as McCombs used a lateral drop and pinned him.

Woodbridge closed the gap to 21-20 when Bill Cahall and Rocky Flem recorded victories. It was here where Thomas clinched the victory by defeating his opponent. Larry Tingle gave Woodbridge its final points by deciding the Spartan's Dean McCombs 8-6.

As previously mentioned the conference tournament will be held this Friday and Saturday at Seaford High School. Lapinsky, Simpson, Mertz, Jackson, and Larry McCombs all have a good shot at finishing in the top three from the Spartans. From Woodbridge Frisy and Richards have the best shot.

Mens and Womens Exercise Sessions are being offered at the Chipman Gym each Thursday evening from 7-9:30 p.m. The Lake Forest Athletic Booster Club sponsors the activity, and asks one dollar donation per person. Stay active and healthy, and get in shape for spring.

decision of a pin in his next match. After the Raiders won the 135 pound match by decision undefeated Spartan Bill Jackson won again this time by a score of 5-2. Jackson's biggest foe for top seed in his weight class Mike

in the Conference Tournament which is scheduled for his weekend at Seaford High School. Following the 8 pound match two 108 pounders who were previously undefeated on the season met. When it was over Alonzo Frisy of the



Bowling News

Lads and Lassies

by Terry Clegg

Monday night ended the second third of the Lads and Lassies 1975-76 bowling season. After all the games were counted, we find the Misfits taking top honors. They will be in the roll offs with the Pinbusters (winners of the first third) and the top team of the final third. The Sparer gave them a run for the top slot and lost first place by total pins only. Way a Way to Loose!! The Misfits were ready for their opponents as Patti Friedline rolled a 189, 179 and 168 for a 536 series, and Gary Singleton a 203. The 4-Aces were ready for the Misfits too with Linda Johnson rolling a 173 and Joan Edwards a 161. Each team went home with two wins and two losses.

The Sparer, tied for first place with the Misfits going into the final night of this third, had to settle for a two and two split. Martha Vogan told me that her ball was rolling down the alley like a rotten onion; that should give you some idea as to how her night went. Earl Vogan rolled a 198 but his team mates couldn't help him out.

Moose I, their opponents had good games but took their two games by the skin of their teeth.

Friends Four, having a rough time winning games the last few weeks, managed to take three games from Moose II. Carmine Gallo and Dick Clegg were the backbone of their team rolling a 201 and 192 respectively. Their better halves (Hal Hal) chipped in good games too. Moose II has had trouble all season but I'm they'll be giving it all they've got the final third.

Well Sam and Reds, they did it to you again this week. The women of the Campers outranked their men with Mary Friedline rolling a 202, 165 and 187 for a 554 series, (high game and second high series for women) and Betty Lyons a 169. Even with Edna Mae Layton's 193, 194 and 196 (583 series, high series for women) and Mike Fry's 241 (high game for men), they only managed to take one game from the Campers.

The Dy-no-mite team showed the Goldiggers that they are Dy-No-Mite as they

The Strikers must slipped Mickey Moose a Mickey Finn tonight as they took three games from them. Jeff Fry started the ball rolling with a 201 and Nacny Daniels, again this week for the Strikers, rolled a 174. Mickey Moose couldn't seem to get rolling but rest assured, they will be in there fighting this last third.

The No-Mads ended up chalked up four games. Flo Dopirak was the spit fire for her team as she rolled a 163 and 170. Her team members hung in there with all having good games. The Goldiggers, having to bowl with one member of the team missing, gave it their best effort but couldn't pull it off. It really hurts a team when it doesn't have a full line up, as the Goldiggers could tell you. Many Bergold rolled a 178 and 188 and Doris Buck a 184 but it just wasn't enough to take the lead and win the games.

out in no-mans land Monday night as the M and P's coasted to a four game win. Tom Passwaters rolled a 211 but his team members lag-

ged behind and couldn't give him any support. The M and P's took advantage of this with Al Melvin rolling a 226 (second high game for men) and Claire Melvin a 173 and 163.

All in all, this third has really been exciting. All teams bowling this year are capable of winning top slot and it's anyone's guess as to who the winning team will be. I wish all the teams good luck in the last third and in the roll offs. Until next week, HAPPY BOWLING!!!

Standings

W L
Misfits 31 13
Sparer 31 13
Friends Four 25 19
Pinbusters 23 21
Dy-no-mites 23 21
Mickey Moose 23 21
Moose I 23 21
4 Aces 21 1/2 22 1/2

Strikers	21 23
The M & P's	20 24
Goldiggers 19 1/2	24 1/2
No-Mads	19 25
The Campers	17 27
Moose II	11 33

High Individual Games Women 160 and over: M. Friedline-202, 165 & 187 (554); E. M. Layton-193, 194 & 196 (583); P. Friedline-189, 179 & 168 (536); M. Bergold-178 & 188; D. Buck-184; G. Lutz-184; N. Daniels-174; C. Melvin-173 & 163; L. Johnston-173) D. Thistlewood-171; F. Dopirak-163 & 170; B. Lyons-169; J. Edwards-161.

High Individual Game Men 190 and over: M. Fry-241; A. Melvin-226; T. Passwaters-211; G. Singleton-203; J. Fry-201; C. Gallo-201; E. Vogan-198; D. Clegg-192.

Harrington Business Bowling

by Rich Dennis

With just six weeks remaining in this seasons bowling competition, it seems as the just about everyone is waiting for just the right time to make their move.

We take a look at the front runner, who is Wally's Garage, and notice they did make a move, but in the wrong direction.

Wally's had a chance to greatly increase their lead, but were brought to a slow down by Taylor and Messick, who took three points from them. Kenneth Collins paved the way for T & M with a super 604 series and a super fine 278 game. Wally ran strong for his team with a 549 series but was lonely running by himself.

The two teams tied for second place last week meet each other. That is Food Rite and Jarrell's Fuel and Food Rite seems to be putting on the steam so they managed to take three points from Jarrell's. Frank says, "They could have taken all four if he had one in the Blind." I wonder who he meant!

Now here is a team striving to stay up there and I don't mean just in the top 10. Quillen's buried Big John's Son with their own back-hoe as they downed them all four points. Earl probably would have said, "All or nothing." Every man on Quillens bowled over his average during this savage attack. Only one man on Big John's met his average and just did by one half a point.

Burr's Food is still maintaining a steady pace with the front runners, downed Dur-A-Clean three points. New Cover set the stride with a 543 series. The rest were behind; we just couldn't stride that fast. Ira and Gary Glanden did the shooting for their team each have over a 200 game.

Robbins Hardware, a strong competitor in the past, may be making a come back as they she blacked Harrington Moose "A" all four points. Herb Robbins was not available for comment, but did set the stride for his team with 549 series. Al Melvin fought back with a 541 series, but just couldn't get the same kind of backing.

Although unable to break team average, Fry's American found it just wasn't necessary as the took three points from Butler's Fuel. At least not necessary when the other team is under the average even further.

Being five games from front slot doesn't discourage the Spoilers, as they split two and two with Penn Central. Leonard Outten is not discouraged not with a 588 series with two games over 200. Nice Bowling! All the men or Penn Central just pulled together for their two points.

The Moose teams sees to have cooled their heels as we find Moose "B" in ninth slot after defeating McKnatt three points. John Townsend did the work for Moose with a 207 game. McKnatt's? Well! they just seem to have died.

Keep bowling men. From here on in, every game counts. Especially if it's for you.

W L	Home	Score
12 4	Penn Central	5 11
11 5	Big John's Son	3 13
11 5	Over 200 Game	
11 5	Kenneth Collins	278
10 6	Leonard Outten	202-226
10 6	John Townsend	207
9 7	Gary Glanden	206
7 9	Wally Ryan	202
7 9	Ira Glanden	200
7 9	Neu Cover	200
6 10	Moose "A"	
6 10	Butlers Fuel	
6 10	McKnatt's Funeral	
	High Series	
	Kenneth Collins	604
	Leonard Outten	588

JOHN H. DONATO

Plumbing & Heating
Repairs & Alterations

Boiler Cleanings

398-8248

42 Commerce St. - Harrington



YOU'RE INVITED To Delmarva Power Cooking Schools

PLACE: DELMARVA POWER DEMONSTRATION KITCHEN HARRINGTON, DEL.

TIME: 7:30 P.M.

DATES: February 26th- "Mostly Meatless Meals"

March 4th- "Budget Meals"

March 11th- "Happy Birthday America"

Everyone Welcome!!

Gifts for All!

Delmarva Power

Bottom Round Roasts

\$1.49 [Well-Trimmed]
lb.

Chipped or Cubed Steak

\$1.99 [Extra-Lean]
lb.

Round Steak

Full-Cut Top
\$1.49 lb. **\$1.79** lb.

[Boneless-Well Trimmed]



Ground Round

[Extra-Lean]



\$1.29 lb. **\$1.19** lb. 5 lbs. or more

Turkey Drumsticks

39c lb.



Quillen's "Homemade" Pure Pork Sausage

Loose **\$1.19** lb. Stuffed **\$1.29** lb.

Jamestown Sliced Bacon

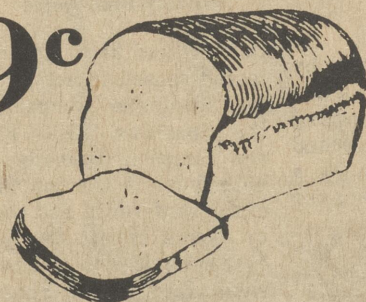
[Smithfield Cured]
\$1.19 1 lb. pkg.

Turkey Wings **35c** lb.

Dairy Market Enriched

White Bread

22 oz. loaf 3 loaves



39c **\$1**

PRODUCE



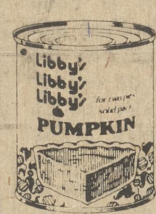
Golden Ripe Bananas **15c** lb.

Green Giant Cream Style

Yellow Corn **4** 17 oz. cans **\$1**

Kounty Kist

Sweet Peas **5** 17 oz. cans **\$1**



Libby's Solid Pack Pumpkins

3 29 oz. cans **\$1**

FOR QUICK HEARTY MEALS FROZEN FOODS

Mrs. Pauls Candied

Sweet Potatoes **49c** 12 oz. pkg.

Tender, Green Kale **39c** 1 lb. bag

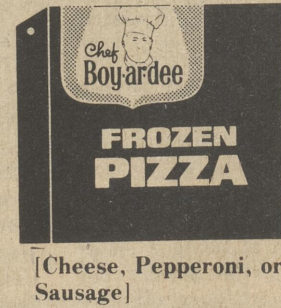
"Wesson" Vegetable Oil **89c** 24 oz. bottle



"Baggies" Trash Bags **79c** 30 gal. size pkg. of 10

Kellogg's Rice Krispies **59c** 10 oz. box

Chef Boy-ar-dee



Pizza **89c** 13 1/4 oz. pkg. [Cheese, Pepperoni, or Sausage]



Star-Kist Chunk Style Light Meat Tuna **2** 6 1/2 oz. cans **\$1**

Rich's Coffee Rich **29c** 16 oz. pkg.



"White Cloud" Toilet Tissue **69c** pkg. of 4 rolls



"Pringles" Potato Chips **79c** Twin Pack

Mrs. Filberts Corn Oil Oleomargarine **2** 8 oz. cups per pkg. **59c**

QUILLEN'S DAIRY MARKET

Open EVERY DAY of the year 8:00 A.M. - 10:00 P.M. For Your Convenience

Dorman St. Prices effective Feb. 19, 20 and 21, 1976

Phone 398-8768

We reserve the right to limit quantities.

Harrington, Del.