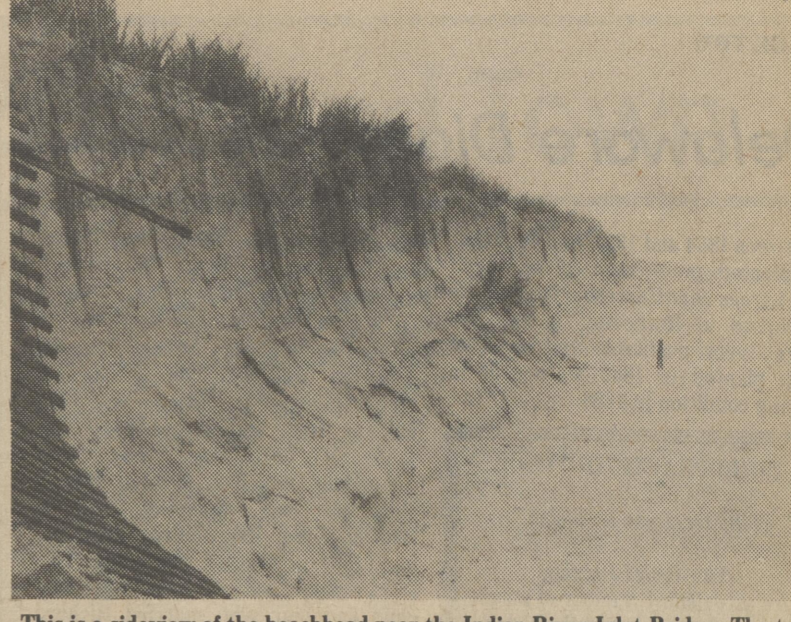




Soil erosion at Broadkill shows Dr. Lobo's Mother's house with not much beach left. Photo by H.G.F.



Soil erosion to the beach 1 mile north of the Indian River Inlet Bridge shows how badly the beach is eroding away. Photo by H.G.F.



This is a sideview of the beachhead near the Indian River Inlet Bridge. The top of the dune is about 12 feet high which shows how the beach is eroding away. Photo by H.G.F.

The Harrington Journal

Sixty-Sixth Year, No. 22, November 25, 1981

Published Every Wednesday at Harrington, Delaware

Twenty Cents Per Copy

Trash collection site to close

Ask any householder, and he will probably say that the one thing that apparently accumulates faster than bills is the trash. But it seems that the trash business, at least at the Vernon collection station southwest of Harrington, is not going great guns. The Delaware Solid Waste Authority recently announced plans to close the Vernon site as of December 1.

The state agency says the collection station is not used enough to warrant keeping it open even for the reduced schedule of two days a week under which it has been operating recently.

The state Solid Waste Authority has been operating the site since it took over trash disposal responsibilities from the state last year. The county, which appointed three of the sites for the use of residents who do not have a garbage collection service, kept the Vernon site open six days a week. The

state decided it needed to collect \$2 for each visit to the collection station to make it pay for itself. It didn't. Then the schedule was reduced to two days a week - Wednesdays from 12 noon to 7 p.m. and Saturday from 8 a.m. to 5 p.m. It is still a losing proposition. So the Vernon collection site will close as November ends.

Area residents who must haul their own trash have two options. They can take it to the Barkers Landing site just south of Dover Air Force Base. That is open on three days: Tuesdays and Fridays from 12 noon to 7 p.m. and Saturdays from 8 a.m. to 5 p.m. The cost per car load is \$2. Or they could elect to drive to the central landfill at Sandtown where the charge is \$1.00 for cars and a higher rate for pickups and other trucks. The Sandtown landfill is open Monday through Saturday from 7 a.m. until 5 p.m.

Betting off at Harrington

HARRINGTON, DEL. - Unaudited figures just released by Harrington Raceway reveal that the downstate Delaware oval showed a slight decrease in daily wagering this year when compared to 1980 figures. An average of \$115,113 was bet each day during this year's 49-day season which represented an approximate 2% decline for the same corresponding number of nights last year.

Total betting though was off close to \$2.1 million this year since the track was allowed to run just 49 days as opposed to the 65 days it was granted by the State in 1980. Track General Manager, George Simpson noted that the facility ran in direct competition with Freestate Raceway in Laurel, Md. for the first 20 days of their season and then had to buck the baseball playoffs and the World Series. "Fortunately we were able to hold our own against the competition, but when 3 weeks was taken away from our prime racing season, that put our business in a serious situation," Simpson said.

Simpson went on to say: "It not only hurt Harrington Raceway when we lost those extra days and consequently two-million dollars in wagering, but even more importantly is the effect this is going to have on other businesses in this area. If we don't survive, many of them will be seriously affected as well."

"As far as the racing itself went, we had a great year," Simpson said. Over 125 new lifetime records were set by

the horses racing at Harrington this Fall. "Although this was probably the fastest year we've ever seen here, probably the best thing that can be said is that it was one of the most competitive. When you get 125 horses breaking their own records in such a short 49-day period and when you look at the large number of drivers taking wins here each week it means we've had a good competitive season and that's good for everyone concerned," noted Simpson.

Leading drivers for the Meet were Jim Porter and Bryce Truitt. Porter led all drivers with most wins as he took 41 horses into the "Winner's Circle". Porters 41 wins ranks as one of the highest totals ever recorded at Harrington. Although he had a large number of starts, Porter's percentage of .349 ranks as third best among all drivers. Unlike great homerun hitters who may have low overall batting averages, Porter not only had a high number of wins, but a great percentage total as well.

This is 26-year-old Truitt's second time as the percentage leader at Harrington. In 1979 he won and he's led most all season this year. In 84 starts, Truitt amassed a healthy .406 percentage.

With the close of racing on November 14th, the facilities at Harrington are now used for the purpose of Winter training approximately 500 harness horses.



Three Spartans, including Rodney Abrams #75 and Kevin Smith #9, collaborate to take a Milford Buccaneer out of action in the battle that won Lake Forest the bell on Friday night. Now the Southern Division Henlopen Champs face Archmere in the opening round of the state tournament Saturday morning at 10 a.m. The game will be played on Spartan turf. For more on the Milford game, see page 10. To meet the Spartan Champs, see page 11.

Nielsen receives PACT award

Barbara Nielsen, recently of Frederica and currently of Germany, was the recipient of an award from the Delaware State Advisory Council for Title I in recognition of her distinguished service to the Lake Forest Chapter of the Advisory Council. (Lake Forest PACT). Ann Duff of Harrington, accepted the award on behalf of Mrs. Nielsen at a recent state PACT workshop. Also attending the workshop from the Lake Forest organization were Carol Lamphier, Title I Reading Consultant, and Evelyn Warren.

Mrs. Nielsen served as chairperson of the Lake Forest PACT for a number of years, helping to write the by-laws for that organization.

Her volunteer service on behalf of PACT further included editing the newsletter, "The Pied Piper" and providing two make-and-take workshops which gave parents the opportunity to create materials useful in helping their children. One of these workshops was offered at the state level.

Mrs. Nielsen who recently moved to Germany where her husband is stationed with the Air Force, was also recognized with an award from Lake Forest PACT.

The local group is planning a workshop for parents sometime after the first of the year.

Lake Forest senior is business intern

Linda Sakowski, a 17-year-old senior at Lake Forest High School is the first student selected to participate in the new Business Internship Program offered by Sincerely Yours Telephone Answering Services, Inc.

The intern programs work in a fashion similar to the high school's work coop program in that the student intern spends part of his day in regular classes at school and part at the business. However, the new program is designed for a 90-day period during which the student is "paid" for the duration of the internship in intensive business experience rather than in dollars. It is followed by placement either on an "in-house" basis at the business service itself or in another business. According to its organizers, the internship is designed so that the student leaving the program following the initial three-month training period is "...ready to enter into a business venture solo (with guidance)..."

Titled "In the Pursuit of Excellence", the program, according to its originators, is "...offered for outstanding high school seniors who intend to use some form of business experience and expertise in their vocational and personal lines." Although it is planned for high school seniors, business majors at the college level and "other interested in a short-term orientation to business" could also "be screened for possible internship."

Linda, who spent part of her sophomore and junior years in the horticulture program at Kent Vo-Tech, learned of the internship through an ad. She made application, was interviewed and subsequently selected on the basis of that interview. At present she is well into the 90 day training period following which she expects to be employed at the business itself on a part-time basis as she continues her senior year. The firm offering the training program is actually a complexity of businesses offering a multiplicity of services. It has four divisions including "Sincerely Yours", a franchised telephone answering service owned by Mary Vincent and Aaron's Business Services. A part of the telephone

answering service is "Dial-a-Deal" the 24 hour swap shop which is aired over WKEN radio at 10:45 a.m., Monday through Friday.

"Aaron's Business Services" serves as registered agent for corporations wishing to take advantage of Delaware's favorable corporation laws. It offers a variety of other business services as well. A computer network with a computer training program and an ad agency are two other aspects of the business.

On the job, Linda is exposed to many phases of business management and a variety of responsibilities. She is responsible for the firm's mail forward clients and serves as a coordinator for corporation for which it serves as a registered agent. In the latter capacity she assists with much of the paper work involved in the incorporation process. Also among her responsibilities are keeping checkbooks up to date, making deposits and paying bills, billing duties for the ad agency and "Dial-a-Deal", answering the phone and screening phone calls and coordinating appointments and guest appearances for her employer. In addition, she is beginning to study in the computer program.

Establishing goals, setting priorities and managing time are all emphasized in the internship program. Linda's long-term goal is to become a secretary, working either for herself or for a

business where she can make use of the skills she has learned.

At the close of her internship, she will be employed, part-time, with Aaron's Business Service where she has found bookkeeping to be her particular niche. But she will also be in a position to offer her business skills, on her own, to other businesses. In fact, the firm plans to get into a program in which data processing units will be available for lease to individuals who want to

[Continued on page 5]



Linda Sakowski



Cash awards and congratulations were in order for the top driving champions at the conclusion of Harrington Raceway's Fall Meet. Senator Thurman Adams, Jr., [left] President of the Raceway, is shown with 26-year-old Bryce Truitt who completed the Season as the top UDRS Percentage Champion with a .406 total. Track Publicist, Gary Simpson [right] congratulates veteran harness reinsman, Jim Porter for taking the Dash Champion award. Porter ended Harrington's 49-day Season with a remarkable 41 wins. Porter and Truitt also each received a valuable set of racing harness from the Empie Manufacturing Co. and Genie Anderson's Racing Equipment.

ENERGY SAVERS ALERT See pages 8 & 9



A Season for Thanksgiving - Calvary Wesleyan Church will be the site of Harrington's annual community Thanksgiving Service this Wednesday evening at 7 p.m. The Reverend William H. Miller is host pastor, and the Reverend W.P. Watson will be the speaker. As an expression of gratitude and as a measure of their concern for those in less fortunate circumstances, worshippers are asked to bring an item of canned goods or other non-perishable food to stock the emergency food pantry. The collection for the evening will go into the minister's fund which buys, among other things, emergency fuel for families in sudden need. According to local ministers, there have already been requests for such assistance equal to the total number received last year.

Spence has venison in the freezer

Felton area hunter Lee Spence has 180 pounds of venison stored in his freezer, the result of two successful hunting seasons this year.

Most recently, Spence got a 185 pound buck near Woodland Beach on the opening day of the regular shotgun season. Spence was actually watching another deer, a doe, when the sun coming up over the trees at the little after 6 a.m. caught his eye as it glinted off something. At first he thought it was an old beer can or something else metallic. But a second look revealed the polished antler of an 8 point buck, also intent on the doe for his own reasons.

Spence's first shot from 50 yards hit the buck in his hind quarters and started the deer running toward him. A second shot missed and sent the buck in the opposite direction. The third, which brought the trophy down, was fired from 70 yards.

In addition to the trophy, the conquest brought Spence 125 pounds of packaged venison for winter feasting.

Earlier, during "black powder" or primitive weapon season, Spence got a 3 1/2 year old doe. The doe, he reports, was a bit unusual in that it was three legged - apparently from a deformity at birth rather than an accident. The doe was accompanied by an 8-month-old fawn which was claimed by another hunter.

NOVEMBER 26, 1981 - All State offices will be closed on Thursday, November 26, 1981, in observance of Thanksgiving Day. The usual emergency and essential services will be available however.

DEADLINES	
Church News	Mon. 10 a.m.
Coming Events	Fri. 5 p.m.
Talk With Neighbors	Mon. 10 a.m.
Classified Ads	Mon. 12 Noon
INDEX	
AREA HAPPENINGS	3
BUS. DIRECTORY	7
CHURCH NEWS	6
CLASSIFIED	12 & 13
REST. GUIDE	3
SOCIALS	5
SPORTS	10
MEET THE SPARTANS	11

Delaware Diamonds

by Joyce Jefferson

Between 1854 and 1860 Jonathan Catlin planted more than 12 thousand peach trees near Canterbury, which he purchased in Rochester, N.Y. They proved very profitable and some of them planted in 1860 were still in bearing condition in 1888.

Scharf defined the boundaries of Hudson's Lott as follows: "To the west a tract of land called "Golden Thicket". (It is on this tract that Viola is now located and a history of that community titled "Golden Thicket" was compiled by Margaret V. Chambers). To the east a tract called Norridge and adjoining it on the east a tract called "Arundale" which is west of Double Runs and was warranted to Peter Baucom 17 Sep 1680 and surveyed on 5 May 1684 to contain 880 acres. This tract passed to Ruth Baucom his only child and heir who married Richard James, and from her to her son George James, who left it to his son Jacob James.

"Norridge" was taken up under a warrant to Thomas Bannister and assigned by him to Edmund Gibbon 8 Feb 1681. The tracts "Arundale" and "Norridge" lay upon the north side of Bannister's Branch (Hudson's Branch) and seem to have been in the possession of the James in 1747 when in a deed dated 10 Mar 1747 Jacob James conveyed to Daniel James all his title to two parcels of land on the north side of Hudson's Branch, so called, or Mill Creek, one called "Norridge" containing 880 acres and the other "Arundale" containing 880 acres. In 1796 Daniel James divided his home plantation of 300 acres lying on the south side of the road from Canterbury to the bay made up of two larger tracts, "Norridge" and "Arundale" to Edith Saunders from whom it passed to William Herring, and in 1865 to the Rev. John J. Pierce who sold the 300 acres off in smaller parcels to various persons.

Hudson's or Bannister's Branch rises about two and a half miles west of Canterbury, flows eastward past Canterbury, then southeastward into Dou-

[Continued on page 3]

CHIROPRACTIC OUTLOOK

By Dr. Lynn E. Walsh

The Jolt of Jogging

An astonishing number of people are running or jogging these days. This form of activity may do wonders for the cardiovascular system, but it creates havoc to almost every other part of the body.

Running simply puts intense stress on the body, most especially the focal point of the human structure, the spine.

The central nervous system originates in the brain and extends down through the spinal column, reaching every part of the body through the peripheral nervous system. Interference anywhere in this region impedes the functional processes of the body and decreases blood flow. The chiropractor uses his expertise in gently aligning the spine and vertebra, bring the patient's body back to an optimum level of function.

Presented as a service to the community by

Dr. Lynn E. Walsh
Chiropractic Physician
202 S. Walnut St.
Milford, DE 19963
302-422-0622

2T 11/25



STATE HONORS LOCAL TEACHER. - Lawrence "Al" Drummond, Jr., of Lake Forest S. Elementary School, right, Teacher of the Year for the Lake Forest District, receives a certificate from State School Superintendent William B. Keene at an awards dinner held in Dover recently. Mr. Drummond, who lives in Harrington, was cited for representing the best traits of teachers and for his superior ability to inspire students with a love of learning.

Letters to the Editor

Dear Editor,

As a concerned taxpayer in the 18th Senatorial District, I am unable to understand how a \$27,000-a-year school administrator can seriously entertain the notion that he can do justice to all in such an important job and still serve in the State Senate. When he is in session from January to June who takes his position at the CR Jr. High School? Who takes the Transportation Supervisors' job, when he replaces Jerry Buckworth? No one that I know. Did Jerry continue to get his \$27,000 yearly pay when from January through June he was in the House representing us in the 34th District?

The 18th Senatorial District takes in approximately three times more area than he now represents. Which to me will be more time consuming and cost

consuming.

The telephone number that is listed to contact Jerry is the CR Jr. High School. Is this secretary in the school also his secretary as our representative? This tells me the taxpayers are paying three times for Jerry to be our representative in the 34th District. Can we afford to continue to pay three ways for one service?

Do the teachers, school children and the constituents need him to be our Senator or do you feel this extra time is needed in the school as an administrator?

A vote for Bill Torbert on December 5 will keep his opponent in the school system where he belongs.

Howard Seward
Dover, Delaware

Dear Editor,

I feel the citizens of the 18th Senatorial District are very fortunate to have a man of Bill Torbert's character running for the vacant State Senate seat in the December 5th special election. I have known Bill Torbert for some time, and I have been impressed with his honesty, integrity and down-to-earth approach to good, efficient government. Let's send Bill to the State Senate where he will put these qualities into practice for all of us.

Alice McKone
Dover, Delaware

Dear Editor,

The announcement that Bill Torbert will be the Democratic candidate for State Senate in the 18th Senatorial District came to me as a breath of fresh air. We are lucky that such a man is willing to remain in public service and devote his energies to honest and efficient state government.

Thank you,
Crystal Reed,

Dear Sir:

In my opinion, there is only one choice in the December 5th special election for State Senate in the 18th Senatorial District. Bill Torbert stands out as an experienced, trusted public servant. His 19 years in public service have been characterized by a no-nonsense approach to waste and inefficiency and a careful regard for the taxpayers' money. We need more men like Bill Torbert in the General Assembly.

Sincerely,
Charlotte C. Gibbons

Dear Sir:

It is not an accident that Bill Torbert has led the Democratic ticket in votes on several occasions. His long and unblemished record as a public servant will serve him well in the State Senate. I have the utmost confidence in Bill Torbert. Won't you join me in voting for Bill Torbert on December 5?

Sincerely,
Marie Porter

"Have Your Turkey on us!!!"

That's right, The First National Bank of Harrington has a free 14 to 16 pound self-basting turkey for you, when you deposit \$3000 to \$7000 in a new or existing savings account, or with the purchase of any certificate of deposit. If you deposit more than \$7000, we not only give you the turkey, but all the trimmings, too; bread stuffing, cranberry sauce, apple sauce, peas, and sweet potatoes. This special offer is good only through Friday, December 18th. So don't delay, get started earning excellent interest on savings, and get your free delicious holiday turkey, from The First National Bank of Harrington. There will be a substantial interest penalty for early withdrawal...member FDIC.



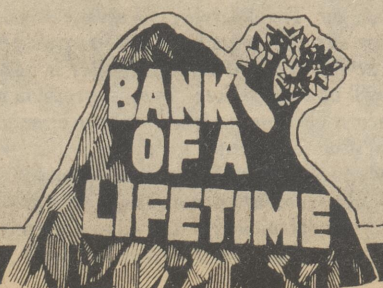
Member
FDIC

the first
national
bank of harrington
9 Commerce Street
Harrington, Delaware 19952



Canterbury
284-3201

Harrington
398-3232



THE HARRINGTON
PRINTERS-
PUBLISHERS



HARRY G. FARROW, JR., Editor & Publisher
BARBARA BROWN, Associate Editor
JEAN SARRO, Production Manager
ANNE PALADINO, General Manager

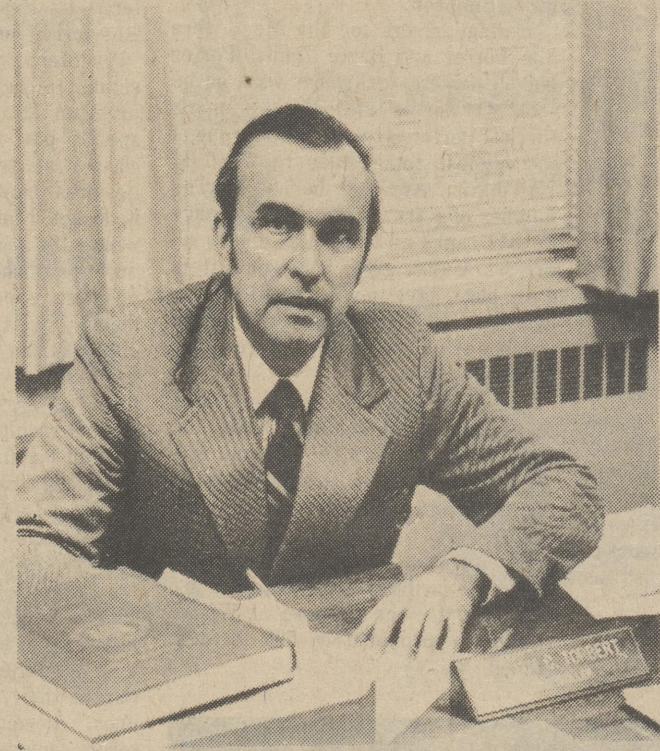
USPS-235940

THE HARRINGTON JOURNAL (USPS-235940) is published every Wednesday by THE HARRINGTON JOURNAL, P.O. Box 239, 19 Commerce St., Harrington, DE 19952. Second Class postage paid at Harrington, DE. ADDITIONAL ENTRY OFFICE AT DOVER, DE 19901. POSTMASTER: Send address change to THE HARRINGTON JOURNAL, P.O. Box 239, Harrington, DE 19952. \$7.50 per year IN STATE, \$9.00 per year, OUT OF STATE.

Office of Publication
17 Commerce Street
Harrington, De. 19952
1-302-398-3206

BILL TORBERT

State Senate - 18th District



"My pledge to the citizens of the 18th Senatorial District is simply this . . . to put my 19 years of government experience to work to achieve honest, efficient, and no-nonsense solutions to problems which affect us all."

You have Bill Torbert's pledge. Won't you
pledge him your support on December 5?

BILL TORBERT

the proud Democrat!

PAID FOR BY TORBERT FOR SENATE, JIM MCGINNIS, TREASURER

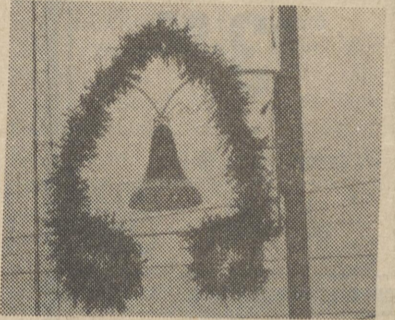
Area Happenings In and Around Town

Coming Events

Beginning Nov. 24- The excitement, beauty and delight of the holiday season will arrive early at the Winterthur Museum and Gardens this year. Visitors will be able to enjoy the very popular "Yuletide at Winterthur" tour beginning Tuesday, November 24, through Sunday, January 3. Early reservations are strongly advised, especially for weekend and evening tours. Call (302) 654-1548 or write Yuletide Tours, Winterthur Museum, Winterthur, DE 19735.

NOVEMBER 26 - Thanksgiving Dinner will be served at Manship's Church, 4 miles west of Felton on Route 12 on Thursday, November 26. There will be oysters, turkey and all the trimmings plus dessert. Serving begins at 12 noon. Adults, \$6.00, Children up to 12, \$3.00. For ticket reservations call 284-4250 or 284-4653.

DECEMBER 1 - Harrington Fire Co. Ladies Aux. Christmas Party is on December 1st at Swartzentruber's Restaurant, Greenwood. For reservations, call 398-8760 by Nov. 17th. Bring \$3.00 gift.



DECEMBER 5 - The Fifteenth Annual Harrington Jaycee Christmas Parade will be held Saturday, Dec. 5th at 1:30 p.m. (Line-up time 12:30). Rain date is Dec. 12th. Our Grand Marshalls will be Kermit the Frog and Miss Piggy, of the popular children's show "The Muppets".

Trophies will be awarded in 16 categories. For further information or to receive entry forms, call 349-4169 (Bruce Hickman) after 5:00 p.m.

DECEMBER 5 - Bridgeville Historical Society, Inc. presents its sixth annual "Christmas in Bridgeville" featuring the Christmas craft shop with country store, Saturday, December 5, 1981, from 10:00 a.m. to 4:00 p.m. at the

Bridgeville Fire House on Market Street. Admission is free and refreshments available.

Also, several quilts on display at the Society Museum (Old Fire House); a queen-size quilt will be chanced off as well as an "antique surprise".

DECEMBER 6- The Friends of the Harrington Public Library present their third annual Wine and Cheese Party on Sunday, December 6, from 4 to 6 in the afternoon. This year's event will again be held in the Harrington New Century Club building, 103 Dorman Street. Tickets are \$5.00 per couple or \$3.00 for singles in advance or \$6.00 per couple and \$3.50 for singles at the door. Tickets may be purchased from any member of the Friends or at the Library. For more information please phone 398-4647 or 398-4356. Organ music by Ronald Jester.

DECEMBER 13 - The Magnolia United Methodist Church Choir will present the Christmas cantata "Come to the Manger", by Joe E. Parks, at 8 p.m. on Sunday, December 13. The public is invited.

DECEMBER 22- The annual Lake Forest High School Christmas Concert is December 22, 1981 - 7:30 at Lake Forest High School Auditorium. Admission is free.

Delaware Diamonds

[Continued from page 2]
ble Run Branch about three-fourths of a mile above the junction of Bishop's or Pratt's Branch with the Double Run. Norridge and Arundale were located in what is now South Murderkill Hundred, while Hudson's Lott was mostly in North Murderkill Hundred.

CHRISTMAS OPEN HOUSE GALLO'S ANTIQUES
nr. Harrington
Sat., Nov. 28, 1981
10:00 a.m. to 4:00 p.m.
Furniture, Glassware, Hummels
10% off Glassware
(Take 14 West of Harrington, go approximately 4 miles, turn left on Rd. #114 toward Andrewsville, go 2 miles, located on right.)
Phone 398-8481 Refreshments



A state winner in conservation, Lisa A. Clark of Greenwood, will travel to the National 4-H Congress in Chicago on November 29-Dec. 3.

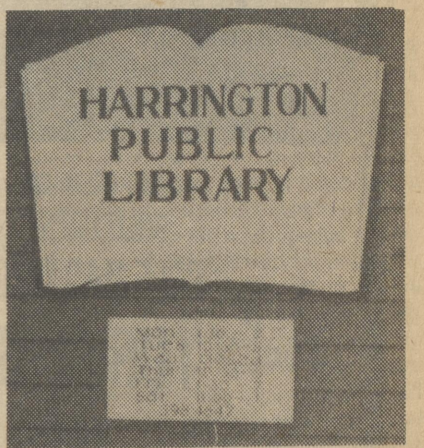


T.K. Horeis, member of the County Bumpkins 4-H Club attended the Beef Clinic presented by Dr. Richard Fowler, Associate Professor, University of Delaware. Fifteen 4-H members and parents learned the basic care and management of raising a Beef Animal.

Armed Forces

NAVY NEWS-Navy Senior Chief Radioman William H. Scudder, son of Percy M. and Carol E. Scudder of Route 2, Box 230, Federalsburg, Md., recently returned from an extended deployment to the Mediterranean Sea and the North Atlantic Ocean. He is a crewmember aboard the aircraft carrier USS Forrestal, homeported in Mayport, Fla. During the six and one-half month cruise, he participated in various exercises with other units of the 6th Fleet and those of allied nations, including "Ocean Venture 81". A 1964 graduate of North Carolina High School, Denton, Md., Scudder joined the Navy in January 1965.

instructions in drill and ceremonies, weapons, map reading, tactics, military courtesy, military justice, first aid, and Army history and traditions. He is a 1981 graduate of Caesar Rodney Senior High School, Camden.



It's an open book and a sign of good things. The Harrington Public Library boasts a new sign created by Layton Advertising of Milford and paid for by the Friends of the Library.

ARMY/AIR FORCE NEWS-Army Pvt. Daniel P. Cain, son of Mr. and Mrs. Harold L. Lavere of 301 E. C-W Ave., Camden, Del., has completed basic training at Fort Jackson, S.C. During the training, students receive

JERRY BUCKWORTH For Senate HE KNOWS THE JOB

- Jerry Buckworth*
- Currently serving as Representative of the 34th District in General Assembly.
 - Principal of Caesar Rodney Junior High School.
 - Member of Camden-Wyoming Lions Club.
 - Camden-Wyoming Little League Coach.
 - Member - Wyoming United Methodist Church.
 - Jerry Buckworth knows the legislature — he's been there.



SPECIAL ELECTION
18th Senatorial District
Saturday, Dec. 5, 1981
A.M. to 8:00 P.M.

JERRY BUCKWORTH
for SENATE
HE KNOWS THE JOB

PAID FOR BY COMMITTEE TO ELECT JERRY BUCKWORTH
"JOE RAYMOND TREASURER"

trim
SAVE 50% on December class fees if registered by Nov. 30.
Call today for information on Harrington and Milford classes!
736-6083 or 674-5162
AEROBIC FITNESS THAT IS SAFE AND EFFECTIVE!

PUBLIC AUCTION
2 Tractors, Farm Machinery and 2 Farm Trucks
Motorcoache and Trailer

I will sell at Public Auction the following Equipment on my farm located on Alt. Rt. 404 just West of Queen Anne, Md. Turn South on Rt. 309 off Rt. 404 then turn West on Alt. Rt. 404 and it's the first farm on left with brick entrance. (Signs will be posted).

SATURDAY, NOVEMBER 28, 1981
11 A.M. Sharp
Rain or Shine

John Deere 7020 Tractor w/20, 8-38 Dual Wheels; John Deere 5020 Tractor w/Dual Wheels; John Deere 6600 S.P. Combine with #216 Platform and #444 Picker Head and only 800 hours of use; John Deere 1290 - 8 Row Planter; John Deere 7 bottom 16" PLOW; John Deere 6 bottom 16" PLOW; John Deere 15 ft. Disk; John Deere 24 ft. #230 Transport Disk; Midwest 5 bottom Harrow; John Deere 12 ft. 3 pt. Hitch #1600 Chissel PLOW; John Deere 5 ft. 3 pt. Hitch Rotary Mower; Chattanooga 16 ft. Cultipacker; 3 pt. Hitch Blade; 3 pt. Hitch tractor boom; 32 ft. Donahue Trailer; 2 wagons w/grain Bodies; 1967 Int. #1800 Loadster 10 wheel Truck with grain body; 1961 G.M.C. #4000 Truck with grain body; 1978 AVCO 29 ft. Motorcoach with only 27,200 miles, new front brakes, 4 new tires and new muffler. (Buyer will be responsible for Inspection of Licensed Vehicles) 2 Pianos and 3 Stoves.

Auctioneer's Note: This equipment is in good condition and ready to use. There are no small tools and misc. So be on time.
Terms: Cash Day of Sale

Auctioneer: Crawford J. Carroll
P.O. Box 531
Dover, Del. 19901

Owner: Robert L. Wood
RD 1 - Box 157
Queen Anne, Md.

Lunch will be served

2T, 11-25

Grand Opening

Old House Furniture
18 Commerce St.
Harrington, DE

Antique Glassware Bric-A-Brac
Estate Sales
Consignees Wanted
Watch for our AUCTION DEC. 5th
Free Gift to the First 50 Browsers

Hours 9-6 Mon-Sat. Prop. Wilbur Hilliard

BINGO
Every Sunday Night
7:30 P.M. Harrington Fire House
Mechanic Street 398-8931
Early Bird Games - \$50
Cash Prizes \$15-\$50 Free Admission

Don't let next year get you down, Come in and join our 1982 Christmas Club today.

Receive one week free.

Checks mailed out November 1, 1982

The Peoples Bank of Harrington
"The Friendly Bank" Member FDIC
Clark & Hanley Sts. 398-3256

(302) 335-9887
FRESH SEAFOOD

THE HEARTBREAK HOTEL
Bowers Beach, Dela.

COLD BEER COCKTAILS FRIDAY NIGHT HAPPY HOUR Steamed Shrimp

BREAKFAST FROM 5 A.M. SPECIAL LUNCHES DINNER TIL 10 P.M. 12-9

DELI-BARN
Now Has... **SANYO & YUASA** Keroseine Heaters
Special on Subs At "Special Prices" (In 11 Sizes)
Boiled Ham . . . \$1.99 lb.

IMPERIAL PALACE
Chinese Restaurant
Szechuan and Hunan Cuisine

Lunch Buffet 11:30-2:30 Daily
Open 7 days a week

1711 S. DuPont Highway
Dover, De. 19901
(302) 674-4224

12-9

Hi-Grade Dairy
Fresh Donuts Daily
Homemade Ice Cream Pizzas Submarines and other Sandwiches

Route 13
Harrington 398-3310

12-30

ORIENT EXPRESS
CHINESE RESTAURANT
LUNCH • DINNER • TAKE-OUT
COCKTAILS & EXOTIC DRINKS

Treat a friend to something different
RT 113 DOVER (JUST N. OF BLUE HEN MALL)

12-30

Burtons Sport Shop
Commerce St. Harrington, De.

1. Sandwiches - All Kinds Subs
2. Homemade Soups & Chili
3. Breakfast Specials - Daily
4. Cold Platters - Daily

Take Out Orders - Hand Dipped Ice Cream
398-8969 1-6

LIVE OR STEAMED CRABS

IF IT SWIMS... WE HAVE IT!
PLUS EVERY KIND OF SEAFOOD FRESH TROUT DAILY

- Live Lobster
- Steamed & Live Crabs
- Scallops
- King Crab Legs
- Lobster Tails
- Orsters
- Turtle
- Stuffed Flounder
- Shrimp
- Crab Meat

E & D SEAFOOD
Phone 335-FISH
Rt. 113, Little Heaven, DE
Owned by Irvin Evans

OPEN YEAR ROUND 1-3

FOOD RITE

COUPON
SAVE \$1.00
 LADY VICTORIA
 Ashtray
 VALID THRU NOV 21, 1981
 Your Price with Coupon: \$3.99

Over the coming week, we will be offering this fine European crystal on a simple, convenient item-a-week program at savings of over 40%.

COUPON
SAVE \$1.00
 LADY VICTORIA
 4 Cordial Glasses
 VALID THRU NOV 28, 1981
 Your Price with Coupon: \$4.99

QUANTITY RIGHTS RESERVED NOT RESPONSIBLE FOR TYPOGRAPHICAL ERRORS

QUALITY MEATS

SWIFT PREMIUMS
 GOLD CREST
SELF BASTING TURKEYS
 10 TO 22 LB. AVERAGE

58¢ LB.

USDA GRAIN FED
 WESTERN BEEF
 BONELESS
CHUCK ROAST

1.59 LB.

THANKSGIVING SALES
 3 LB. OR MORE
 FRESH 100%
 PURE BEEF
GROUND BEEF

1.29 LB.

SWIFT PREMIUMS BUTTERBALL TURKEYS	LB.	89¢
SUPERIOR BONELESS WHOLE TAVERN HAMS	BONELESS HALF HAMS \$1.79 LB.	1.69
SWIFT TEND'R LEAN PORK LOINS	(WHOLE OR RIB HALF) LB.	1.29

HYGRADES FULLY COOKED SMOKED SEMI-BONELESS HAMS-WHOLE OR HALF	LB.	1.49
MASH'S LOW SALT FULLY COOKED SHANK HALF OF HAM	LB.	1.09

ARMOUR STAR WHOLE LITTLE BONELESS TURKEYS, 3 TO 7 LB. AVERAGE	LB.	1.89
BONELESS CHUCK STEW \$1.99 LB.	LB.	1.89
BEEF CHUCK BONELESS SHOULDER ROAST OR STEAK	LB.	2.29
BEEF CHUCK BONELESS STEAKS	LB.	2.29
FRESH ECON O PAK FRYERS	LB.	55¢
FRESH WHOLE OR SPLIT FRYER BREAST	WHOLE FRYER LEGS 69¢ LB.	1.29
FRESH GROUND CHUCK	LB.	1.59

JENNIE-O FROZEN TURKEY DRUMSTICKS (KIDS LOVE EM)	LB.	49¢
PORK LOIN RIB CHOPS	LOIN PORK CHOPS \$2.09 LB.	1.99
SUPERIOR OR GROCERS PRIDE SLICED BACON	LB.	1.49
Bologna, Pickle Loaf, Cooked Salami, Spiced Loaf, Dutch Loaf or Garlic Bologna Your Choice!	LB.	1.39
SUPERIORS SLICED LUNCHEON MEATS	LB.	2.29
SMOKED CENTER CUT HAM SLICES	LB.	1.19
MASH'S BUTT PORTION OF HAM	LB.	1.19

HOLIDAY FAVORITES FROM SWIFT PREMIUM:

BONELESS BUTTER BASTED FROZEN TURKEY PAN ROAST WHITE MEAT	EACH PAN \$3.29
MIXED	EACH PAN \$2.79
DARK MEAT	EACH PAN \$2.39
BUTTERBALL BREAD OF TURKEY	3 TO 6 LB. AVERAGE \$1.89 LB.
BUTTERBALL STUFFED TURKEY	\$1.29 LB.
L'L BUTTERBALL	4 1/2 TO 10 1/2 LB. AVERAGE \$1.09 LB.

A HAPPY THANKSGIVING TO ALL!

VIVA TOWELS
 3 VARIETIES
 ROLL
69¢
WITH COUPON ABOVE & \$10.00 PURCHASE

PILLSBURY CAKE MIX
 12 VARIETIES
 18 OZ. PKG.
69¢
WITH COUPON ABOVE & \$10.00 PURCHASE

GOLD MEDAL FLOUR
 5 LB. BAG
79¢
WITH COUPON ABOVE & \$10.00 PURCHASE



MARTA STUFFED 5 1/2 OZ. PAIL MANZANILLA OLIVES	59¢
KELLOGGS 15 OZ. BOX RAISIN BRAN	\$1.29
TAYLOR 23 OZ. CAN VACUUM PACK SWEET POTATOES	69¢
TAYLOR 23 OZ. CAN IN SYRUP SWEET POTATOES	69¢
23 OZ. CAN LIBBYS PUMPKIN	69¢
OCEAN SPRAY JELLIED 16 OZ. CANS CRANBERRY SAUCE	2/\$1
OCEAN SPRAY 16 OZ. CANS WHOLE CRANBERRIES	2/\$1

MC CORMICK 5 OZ. BONUS PACK BLACK PEPPER	\$1.09
VIVA 260 CT. PKG. JUMBO NAPKINS	\$1.29
KIDD 10 1/2 OZ. PKGS. MINI MARSHMALLOWS	2/89¢
TIDE XK 84 OZ. BOX LULAUNDRY DETERGENT	\$3.39
GLAD 10 CT. PKG. TRASH BAGS	\$1.49
9 OZ. PKG. HERSHEY KISSES	\$1.49
LUCKY LEAF 25 OZ. JAR APPLESAUCE	59¢

OCEAN SPRAY 40 OZ. BOTTLE CRANBERRY COCKTAIL	\$1.39
GREEN GIANT 12 OZ. CANS NIBLETS CORN	2/89¢
GREEN GIANT CUT 16 OZ. CANS GREEN KS BEANS	2/89¢
GREEN GIANT FRENCH 16 OZ. CANS GREEN BEANS	2/89¢
BETTY CROCKER 11 OZ. PKGS. PIE CRUST MIX	2/\$1
PILLSBURY 18 OZ. PKG. 5 VARIETIES READY TO SERVE FROSTING	\$1.29
12 OZ. PKG. CHOCOLATE, SUGAR, PEANUT BUTTER OR SUGAR SUNSHINE WAFERS	\$1.09

DAIRY

1 LB. PKG. MEADOW GOLD BUTTER QUARTERS	\$1.89
PHILADELPHIA PLAIN 8 OZ. CREAM CHEESE	85¢
CRACKER BARREL 10 OZ. PKG. EXTRA SHARP WHITE OR COLOR CHEESE STICK	\$1.69
SEALTEST 1 LB. PKG. SOUR CREAM	99¢
8 OZ. PKG. PARKERHOUSE, CRESCENT, DINNER OR BUTTERFLAKE PILLSBURY ROLLS	85¢

FROZEN FOODS

ORE IDA 12 OZ. PKGS. CHOPPED ONIONS	2/\$1
BIRDS EYE 9 OZ. PKG. COOL WHIP	75¢
PET RITZ 9 5/8" PKG. OF 2 PIE SHELLS	89¢
MRS. PAULS FAMILY 1 LB. 4 OZ. SWEET POTATOES	99¢
MORTON 1 LB. 8 OZ. MINCE OR PUMPKIN PIE	99¢
BIRDS EYE FRODOHOOK 10 OZ. LIMA BEANS	65¢

SAVE

WITH THESE MONEY SAVING COUPONS!

PRICES EFFECTIVE THRU NOV. 27, 1981

COUPON
VIVA TOWELS
 3 VARIETIES ROLL
69¢
 EXPIRES NOV. 28, 1981
 LIMIT ONE WITH COUPON & \$10.00 PURCHASE EXCLUDING MILK & CIGARETTES

COUPON
PILLSBURY CAKE MIX
 12 VARIETIES 18 OZ. PKG.
69¢
 EXPIRES NOV. 28, 1981
 LIMIT ONE WITH COUPON & \$10.00 PURCHASE EXCLUDING MILK & CIGARETTES

COUPON
GOLD MEDAL FLOUR
 5 LB. BAG
79¢
 EXPIRES NOV. 28, 1981
 LIMIT ONE WITH COUPON & \$10.00 PURCHASE EXCLUDING MILK & CIGARETTES

COUPON
MAXWELL HOUSE INSTANT COFFEE
 10 OZ. JAR
\$3.99
 EXPIRES NOV. 28, 1981
 LIMIT ONE WITH COUPON

COUPON
SARAN WRAP REGULAR
 50 FT. ROLL
79¢
 EXPIRES NOV. 28, 1981
 LIMIT ONE WITH COUPON

COUPON
DOMINO SUGAR BROWN OR 10X
 2 LB. POLY BAG
99¢
 EXPIRES NOV. 28, 1981
 LIMIT ONE WITH COUPON

DELICATESSEN

"TENDER, TASTY MEAT & CHEESE CUSTOM CUT TO YOUR LIKING."
 AVAILABLE AT STORES WITH DELICATESSENS ALL ITEMS DELI SLICED

SUPERIORS JUMBO BOLOGNA	LB.	1.29
SUPERIORS IMPORTED STYLE COOKED HAM OR GLAZED HAM	LB.	2.69
ARMOUR STAR WHITE OR YELLOW AMERICAN CHEESE	LB.	1.99

PRODUCE

CELERY STALK **49¢**

YELLOW COOKING ONIONS	3 LB. BAG	69¢
EMPEROR RED GRAPES	LB.	69¢
FRESH CRANBERRIES	12 OZ. BAG	69¢
RUSSET BAKING POTATOES	5 LB. BAG	99¢
FLORIDA SWEET TANGERINES	12	99¢

QUILLEN SHOPPING CENTER

Closed Thanksgiving Mon. Tues. & Wed. 8-6 Thurs. & Fri. 8-9 Saturday 8-8 Sundays 10 - 4 P.M.

398-4398

Get Together and Talk With Our Neighbors

Frederica

By Mary "Toby" Johnston 335-5487

Trinity Church of Frederica wishes to thank everyone for helping and supporting our Annual Fall Supper & Bazaar. If I mentioned any names there would be some to be left out; so again thanks to you all. Don't forget the I.L.C. Dinner Nov. 24th. Much help is needed there. Highway Dinner Dec. 18th, so don't put your tools away.

Mrs. Dorothy Stubbs has had a spur removed from her heel at the Kent General Hospital but is now at home. Mrs. Sara Gourley is home. Mrs. Thelma Faulkner will undergo surgery at Milford Memorial on Friday. Mr. Geo. "Bud" Nashold returned to Kent General for further treatment.

To all that are ill, wherever they might be, our prayers and best wishes, May God Bless.

Mr. & Mrs. Dale Cawby are celebrating their "15th" wedding anniversary, Tuesday, Nov. 24th. They plan to spend the day with their children, Michele 12, Michael 11, and Steven 7. The Cawbys are having dinner out and later in the evening will be entertaining friends at their Andrews Lake home. Mrs. Cawby is the former Sally Polgar of Laurel, De. Dale is from Indiana, now working with Civil Service at the Dover Air Force Base.

Mrs. Frances Davidson, Mrs. Mary Purnell, Mrs. Pearl Schmick, Mrs. Virginia Schmick, Mrs. Virginia Webb, and Mrs. Bertha Macklin attended the Kent County Ladies Auxiliary of the

Volunteer Fire Companies dinner meeting at South Bowers Station, Tuesday evening. Next meeting will be at North Bowers Beach Fire Hall January 26, 1982 at 7:30 p.m.

Frederica Ladies Fire Auxiliary will have their Christmas Party Saturday evening, Dec. 5th, at the Fire Hall. Each member is to bring a \$3 gift; they will be notified about their covered dish to bring.

Thanksgiving-Christmas Dinner Meeting for the Trinity M.Y.A.F. will be Wednesday at 7 p.m., Dec. 2nd.

U.M.W. of Trinity Church Christmas meeting will be Tuesday 7:30 p.m., Dec. 8th. Each member is asked to please bring a \$3 gift.

Frederica Adult Center members spent the day Friday 13th with Greenwood Cheer Center. Lots of good fun and food.

Tuesday, Nov. 24th, the Frederica Center will have their Thanksgiving and Birthday Luncheon combined at noon.

Friday, Nov. 20th, Open House and Christmas Bazaar was held from 10 a.m. to 4 p.m. You could get so many pretty things for the holiday trimming and many fine delectables.

Mrs. Lynne Baynard and Mrs. Bertha Macklin spent last weekend in Harrisburg and Hughesville, Pa. with Bert's sister, Mrs. Soisson.

"Happy Thanksgiving to Everyone"
"God Bless"



Mr. and Mrs. Thomas Daniel Walker, II.

Local Interest

By Joann Wyatt 398-3943

Get well wishes go out to Howard Bean Voegelien.

Happy Birthday wishes go out to Mrs. Tom Holston and daughter Heather! Sympathy is extended to the family of Ruth Peck.

Sympathy is extended to the Teague family.

Get Well wishes go out to Mrs. Rachael Griffin.

Congratulations Lake Forest Spartans and their coaches. You're our Southern Division Champs. Wishing you continued success.

Happy Birthday wishes go out to Mrs. Nancy Welch!

Mrs. Doris Larimore and Mrs. Elmer Brown visited with Mrs. Blanche McKnatt in Milford Memorial Hospital. Wishing Mrs. McKnatt a speedy recovery.

Mr. & Mrs. Clayton B. own of Woodstown, N.J. visited with Mr. & Mrs. Elmer Brown on Wednesday.

Mr. Gutar Marquart of Napoleon, Indiana visited with Mr. & Mrs. Elmer Brown on Thursday.

Get Well wishes go out to Mr. Charles West.

Our Community Thanksgiving Eye Service will be held on Wednesday evening, November 25 at Calvary Wesleyan Church.

Congratulations to Mr. & Mrs. Elwood Jester on their fiftieth wedding anniversary.

Happy Birthday wishes go out to Mrs. Lela Taylor!

Mr. Walter Winkler and son, John, have just returned home after spending a few days in Nebraska.

Mrs. Janice Winkler wishes to thank Mrs. Debbie Bennett and family, Rick and Sherry Grunden and family, Mrs. Joann Wyatt and family for helping keep her company while John and his dad were away. Special friends can never be appreciated enough, and you all have shown me what special means.

Brownie Troop 332 held their investiture on Tuesday, November 10 at 7:30 p.m. at Asbury United Methodist Church. Brownie Troop leaders Sandy Frazier, Debbie Bennett and Janice Winkler would like to congratulate all the Brownies on a job well done, and thank the Brownie mothers for all their help.

Take a moment to think of all the things you have to be thankful for, thank God, and have a Happy Thanksgiving.

Well wishes to all, take care, share a smile, God Bless.

Believe it or not?

Mark Canon, 11, of Harrington called to say that on Thursday, November 12, 1981, his cousin (also Mark Canon, 11 of Harrington) solved Rubik's Cube. What about it, Mark?

Senior Center

By Dorothy Graham 398-3780

Smile! Smile! Smile! Thank EVERY-ONE for EVERYTHING that had anything to do with the BAZAAR. It was a perfectly lovely day, Nov. 19, 1981.

Thank you, thank you, thank you. Friendliness filled the Center Thursday always; only difference there were so many here to participate. Smiles, "hellos", and "Oh, it's so good to see you," were just a few of the greetings that were floating thru the Center. All the ceramics and crafts were absolutely lovely and went well. Still have a good supply on hand. So come on around and shop some more.

Sylvia Meredith was leader of Bible Study Monday morning Nov. 16. She spoke on Luke-Chapter 15. Sylvia let the folks discuss the study and gave an interesting hour to all present. Reverend Markley of Trinity gave a prayer and we all repeated the Lord's Prayer. There were twenty-four present.

Julia Astfalk sang a solo, "He" Tuesday morning at Jolly Timers' band practice. Her mother Julia Kleinhans was visiting the Center also. The band was practicing Christmas songs for their trip to Greenwood and for our own enjoyment. There were 18 present. There is such a happy tone to everyone and everything around Christmas. "You better watch out, you

better not cry, better watch out, I'm tellin you why, Santa Claus is coming to town."

Raymond Brown of Harrington Vol. Fire Co. gave a talk on Fire Prevention, Mr. Brown's resume of Harrington Fire Co. and then told of severe burns. Every time the fire whistle blows the firemen lay their lives on the line. Mr. Brown says, "Please, no smoking in bed, be sure you have the right plugs for all fixtures, do not overload outlets, check security locks." He said also that he felt that the Fire Co. did not misuse any funds. He felt that the firemen were trying to help keep the community safe. Thank you Mr. Brown.

The pool tournament was not too good for us. Tho we all enjoyed the men performing so well. Better luck next time. Wednesday the Center prepared for the Bazaar Thursday. The men served at the luncheon and looked so good in their hats and aprons.

Friday everything was back in place, but a festive air seemed to prevail. We had a delicious turkey dinner from Manna. The men again served and in grand style too. Take care each one of you. Best Wishes to those who are ill, homebound or in sorrow. Our prayers are with you. It was splendid seeing so many of you folks at the Bazaar. Come on in. Hi, Emma Clare! Faith.

Gabfest

By Pat Hatfield 349-4255

"O Dear old dull November! They don't speak well of you; They say your winds are chilling; Your skies are never blue.

But, O dear me, November! You've lots of pleasant things; All through the month we're longing to taste your turkey wings!"

I do not know who wrote this little verse, but surely someone with a delightful sense of humor. November is truly turkey month. We like turkey so much we have it for Christmas also, but my Aunt Jane held firmly with the old traditions. It was turkey for Thanksgiving, but goose for Christmas and lamb for Easter. It is so good to keep the old customs, I think. Since our children grew up I've gotten away from it somewhat, but when they were little I observed all the holidays, even the smaller ones.

On Halloween night we had the Jack-o-lantern centerpiece, and the menu had little meat pies with the slits in the crust cut in "pumpkin" faces, and cake with orange icing, etc.

St. Patrick's Day carried its theme of green with lime jello for dessert, and we all dressed in something green. Traditionally the day after is known as Sheila's Day, for St. Patrick's wife, we went into the yellow bit.

On St. Valentine's Day I usually made a huge "Valentine" for dessert for the entire family. On a large cookie sheet I placed white paper lace doilies with a large two-layer heart-shaped cake in the center, surrounded by small heart-shaped cakes, all with pink icing and small red hearts. And out came the red tablecloth and the wee cupid. It was

all so much fun and I hope it made the holiday meaningful for the kids.

Thanksgiving Day will soon arrive. Are you all making lists of the many blessings you are thankful for this year? Perhaps the one at the top of our list is the fact that we are enjoying excellent health. Do you keep the old New England custom of putting at each place setting five grains of corn? Then, after the blessing has been asked, each one, in turn, tells five things that they are thankful for. It is good to share.

I have a problem this year because the freezer is too full. It will prevent me from doing the Christmas baking early. I always get that out of the way early in December...the cookie dough, the Minehaha Cake, the mince pies, and then about a week before I do the pumpkin pies and the rolls. After that I relax and take it all out on the morning of Christmas Eve. Well, I suppose it will all get done somehow. It always does!

I believe it was the Hoosier poet, James Whitcomb Riley, who said, "There's a kind o' feel in the Christmas air". Tess and I noticed this and said yesterday. The air is cold and raw and penetrating as though it would start to snow at any minute. We always hope for a little snow to make it look like Christmas. We, who have grown up with cold winters cannot relate to warm Christmas. Much as I love the sunshine, I always hope it will be dark and cold and cloudy for the Christmas holidays. Yes, I know this is weird, but evidently I am an odd person. The cold, gray days seem to intensify the gaiety, the tinsel and the color within.

Linda Sakowski

[Continued from page 1]

operate out of their homes. Linda could also take advantage of their opportunity.

For the present and near future she says, "I plan to get married in September, and my boyfriend, Dennis Wheeler, is a construction foreman at

Dover Pool & Patio. After we set up housekeeping, I want to work so that we can have a second income that one salary might not buy."

Linda, who will be a member of the Lake Forest High School graduating class of 1982, is the daughter of John Sakowski of Felton.

Cox/Walker Vows

Sue Lynn Cox and Thomas Daniel Walker, II, were married August 22, 1981, at Asbury United Methodist Church, Harrington.

The bride, a 1980 graduate of Lake Forest, is the daughter of Mr. and Mrs. David J. Martin of Harrington. The groom's parents are Mr. and Mrs. Paul Walker of Milford.

The bride, given in marriage by both her parents, wore a white full length gown featuring an empire waist, bishop sleeves and a high neckline. The yoke was sheer and appliqued with schiffli embroidery and seed pearls. The deep crystal pleated skirt fell into a chapel length train and she wore a matching camelot headpiece.

The bride carried a nosegay of assorted pastel spring flowers highlighted by pink rose buds and matching pastel ribbons.

The bride's attendants wore embroidered lace gowns with jackets in rainbow shades of sky blue, mint green, maize and tea rose. Each girl wore a halo of silk flowers to match

their dress. They each carried a combination arrangement of fresh pastel spring flowers in a fireside basket with ribbons matching their gowns.

Maid of honor was Amy Calvert of Harrington. Bridesmaids were Sandy Walker, Milford, sister of the groom, Melinda Carroll, Holly Collison, Beth Horleman, Deborah Todd, all of Harrington, and Michelle Stevens, Canterbury, niece of the groom.

Best man was John Jackson of Lincoln. Ushers were P.J. Walker, Milford, brother of the groom, Mike Stevens, Canterbury, Lester Eck, Felton, Phillip Jackson, Milford and Mike Welsh and Tim Plocinick of Dover.

Janet Brown, of Frederica was greeter and guest book attendant.

The Rev. C.J. Robinson officiated at the double ring ceremony, which was followed by a reception at the Moose Lodge in Harrington.

Following a wedding trip to the Smokey Mountains of Tennessee and Alabama, the couple are now residing in Dover.



Mr. and Mrs. Blake A. Bartley.

Turner/Bartley Wedding

Janet D. Turner and Blake A. Bartley were married October 22, 1981 at the Asbury Methodist church in Harrington.

The bride is the daughter of Mr. & Mrs. Robert M. Berry of Washougal, Washington; parents of the groom are Mrs. David Ryan of Harrington and Clayton Bartley of Rehoboth. Matron

of Honor was Stephanie DeCoster of Dover; best man was Curtis Bartley, brother of the groom.

Reverend C.J. Robinson officiated at the ceremony which was followed by a reception at the home of David and Sandy Ryan.

The couple lives in Harrington.

Greenwood

By Pat Hatfield 349-4255

Report from Greenwood Methodist Charge: The Pastor's Bible Study on the Book of Romans will continue on Sunday evenings, December 6 and December 13 at 7 p.m.

Circle your calendar for the evening of December 7, for the United Methodist Women's Christmas dinner. Saturday, December 12 is the Todd's Chapel Christmas Party; Saturday, December 19 is the Epworth Christmas Party.

Friday, December 18, is the Greenwood Sunday School Christmas Party. The officers for the Junior UMYF are: president, Stephanie Jones, Vice-president, Carolyn Brown; Secretary,

Leigh Durig; Treasurer, Shannon Webb; Reporter, Missy Workman.

Mr. and Mrs. Jacob Hatfield attended the Trinity supper at Frederica on Saturday evening. On Sunday afternoon the Hatfields were dinner guests of Mr. and Mrs. Charles Hatfield of Felton at the Ann Fisher dinner at Milford High School.

Mr. John B. Case of Prime Hook Beach was a visitor this week at the Jacob Hatfields. The Cases will leave after Thanksgiving to spend the next few months at their winter home in Arizona.

Houston

By Margaret Thistlewood 422-4944

Ladies Auxiliary of the Houston Volunteer Fire Co. have elected their officers for the coming year. Mrs. Anna Belle Boone-President, Mrs. Madeline Quillen-Vice President, Mrs. Anna Lee Minner-Secretary and Mrs. Pauline Morgan-Treasurer.

Mrs. Virginia Rockwell, Mrs. Ada Passwaters and Mrs. Elenora Yerkes enjoyed a bus trip to visit the Aquarium and Inner Harbor of Baltimore last week.

Mrs. Sophia Maroudas has returned home after spending several days in Gary, Indiana last week. She attended the funeral of her brother-in-law.

On Monday, November 9th, Mrs. & Mrs. Leonard Rollison celebrated their 40th wedding anniversary and had

dinner with all their children and grandchildren.

Mr. & Mrs. Jig Coverdale were guests of Mr. & Mrs. James Coverdale of Lynch Heights for a birthday dinner for Mrs. Jig Coverdale on Tuesday, Nov. 10th. Other guests were Mr. & Mrs. H.J. Smith, Mrs. Marian Coverdale and daughters of Milford.

Mrs. Cora Minner of Greensboro, Md. is spending this week with her daughter and son-in-law, Mr. & Mrs. Houston Twilley.

James Emory and family members spent several days last week on a hunting trip in the Virginia Mountains. Mrs. Helen Yost of Wharton, Ave. is a patient in the Milford Memorial Hospital. We hope she soon will be much better.

Anne's Kitchen

I'm sure your family will appreciate something different to spark up those Thanksgiving leftovers. Long after the mashed potatoes are gone, your friend Tom Turkey will be patiently waiting in your refrigerator for one last elegant trip to your dinner table.

Maybe you can't make a silk purse out of a sow's ear, but you can make an appetizing meal from leftover turkey if you have something special to go with it. "Risotto" will do just the trick. Actually it is simply rice, but so delicious and different even Tom will look good again.

continue cooking, uncovered, stirring often till most of the liquid has been absorbed. During this time, add the rest of the broth, 1/2 cup at a time stirring to be sure mixture does not stick to the pan. The whole cooking process should take about 30 minutes or a bit longer. The risotto should be creamy and tender.

6. At this point, mix in the remaining butter and the cheese. Let stand a few minutes and serve.

ENJOY!

Felton-Sandtown

By Lola O'Day 284-9175

The TOM WATT campaign was a success for the Felton Cub Scout Pack #141. Thanks from all of us for the support we received from the community, friends, neighbors and relatives. We are now making deliveries. "Thanks".

Mrs. Letha Lord from Madison, Wis. will be visiting her son, Mr. Edward Ward and wife Julie of Felton for three months. Mrs. Lord arrived Oct. 17, for her grandson's wedding.

"Happy Thanksgiving to everyone."

Weekly HEALTH TIP

PREGNANCY

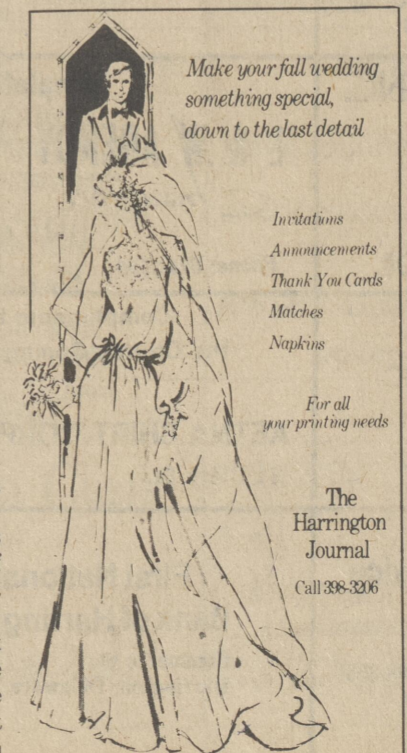
Pregnant women should be very hesitant and selective about taking drugs, stated Dr. M.L. Soentgen to the AMA Convention. Drugs may pass thru the placenta and stay in the bloodstream of the unborn baby longer than in the mother's blood stream. Toxic substances resulting from breakdown of the drug may also reach the fetus. The placenta is not always an effective barrier against transfer of drugs from mother to fetus.

Carl June

HARRINGTON PHARMACY

398-8123 HARRINGTON

Hospital Supplies and Equipment



Your Area Church News

Prospect United Methodist Women

The United Methodist Women of Prospect Church met at the church Nov. 19 with 11 members and Rev. Markley present. Ellen Shultie was in charge of devotions and opened with everyone repeating the Lord's Prayer. November is the month of Thanksgiving. She shared our many blessings to a string of pearls and read Scripture after each pearl. The 1st pearl was the gift of God's Son and her Scripture was John 3-17. Next was the pearl of Peace and her Scripture was Eph. 2-14. The next pearl was the Bible and we thank you for God's words written there. The next pearl was the winning of lost souls and the Scripture was from Prov. 11-30 and Acts 1-8. The next pearl was for prayer and the Scripture was Luke 6-12. Next was the priceless pearl and

that is the Blessed Hope of Christians is the return of Jesus. Scripture here was from John 14-3 and 1 John 3-1. The list of pearls is endless, food, sense, sight, smell and family to name a few. She read 2 poems: Thanksgiving Day Is Coming and Going to Grandmom's. Next we had a quiz, What's My Name? She closed with a reading on Armistice Day which was Nov. 11th. It was very interesting and enjoyed by all.

The meeting was called to order by our President, Vivian Dill. Vivian Dill and Anna Webb reported on the visit to Haven Hill in Nov. Mable Jean Donovan and Mary Lou Wright will make the December visit with Julia Camper and Anna Webb making the January visit.

Markley attended the Methodist Manor House Bazaar. We had been asked to bake pies for the dinner and 9 pies were donated by the women of Prospect.

We had a report from the School of Theology in Africa. We will again have the Christmas card box in the back of the church where we can put in our cards and they will be distributed the Sunday before Christmas. Jean Miller will be postmistress.

Our December meeting will be our Christmas dinner. Everyone brings a covered dish. Phoebe Anthony is in charge of the program.

Anna Webb was our hostess and served delicious refreshments.

Phoebe Anthony, Secretary

ASBURY UNITED METHODIST CHURCH
Rev. Jackson Robinson
Sunday School 9:45 a.m.
Morning Worship 11:00 a.m.
Junior & Senior UMYF 6:00 p.m.

CALVARY WESLEYAN
Wm. H. Miller 388-5331
Sunday School 9:30 a.m.
Morning Worship Service 10:40 a.m.
Children's Church 10:40 a.m.
Wesleyan Youth 6:15 p.m.
Evening Worship 7:00 p.m.

CHAPLAIN'S CHAPEL UNITED METHODIST CHURCH
Rev. Mrs. M.S. Russell
Worship Service 9:30 a.m.
Sunday School 10:30 a.m.
Sermon every other Sunday.

CHURCH OF THE BRETHREN
Farmington, Del.
Sunday School 9:45 a.m.
Church Service 11:00 a.m.

ST. BERNADETTE'S ROMAN CATHOLIC
St. Bernadettes R.C. Church Mass Sunday 9:30 a.m. Confession before Mass.

CHURCH OF THE NAZARENE
103 Mechanic Street Harrington, De., 19952
Pastor Richard A. Koning 398-4193
Sunday School 9:45 a.m.
Morning Worship 10:45 a.m.
Evening Service 7:00 p.m.
Wednesday 7:00 p.m.

Family night program.

ELLENDALE UNITED METHODIST CHURCH
Rev. Mrs. M.S. Russell
Sunday School 10:00 a.m.
Morning Worship 10:45 a.m.
Evening Service 7:00 p.m.

KINGDOMS HALL OF JEHOVAH'S WITNESSES
Rt. 13-A, 1 Mi. S. of Woodside Felton, Del.
Bible Educational Talk 2:00 p.m.
Watchtower Study 2:50 p.m.

TUESDAY THURSDAY
Congregation Bible Study 7:30 p.m.

THEORETIC SCHOOL 7:30 p.m.
Service Meeting 8:30 p.m.

FIRST BAPTIST CHURCH
Dual Highway 113 Frederica by-pass
Rev. Samuel Ingram
Sunday School 9:45 a.m.
Morning Worship 10:45 a.m.
Bible Training Class 6:00 p.m.
Evening Service 7:00 p.m.

WEDNESDAY GREENWOOD
Bible Study & Prayer Meeting 7 p.m.
2 miles east of Greenwood Rt. 16, Greenwood, De.

Bishop John Misher
Pastor Mark Swartzentruber
Assistant Jay Briggs
Deacon Allen Beachy
Worship Service 9:30 a.m.
Sunday School 10:30 a.m.
Bible Study 7:00 p.m.
Wednesday Prayer Service 7:45 p.m.

THE GREENWOOD METHODIST CHURCH
Greenwood, De.

Rev. James B. Daughten
Office 349-4047
Home 349-4324

Epworth
Worship Service 9:00 a.m.
Sunday School 9:45 a.m.

Todd's Chapel
Worship Service 10:00 a.m.
Sunday School 11:00 a.m.

Greenwood
Sunday School 10:00 a.m.
Worship Service 11:15 a.m.

GREENWOOD WESLEYAN CHURCH
Greenwood, Del.
Rev. Etta M. Clough, Pastor
Sunday School 10:00 a.m.
Worship Service 11:00 a.m.
Evening Worship 7:00 p.m.

HARRINGTON BAPTIST CHURCH
Liberty Street W.P. Watson 398-3373
Sunday School 9:45 a.m.
Morning Worship 11:00 a.m.
Adult Choir Practice 5:45 p.m.
Evening Worship 7:00 p.m.

Wednesdays
Craft Class 10:00 a.m.
Children & Youth Choir 6:00 p.m.
Prayer Meeting 7:00 p.m.

HARRINGTON SEVENTH-DAY ADVENTIST CHURCH
57 E. Clark St. Harrington, Del. 422-9493
Pastor Dan Schietzel
Sunday School 9:30 a.m.
Saturday Services 11:00

HICKORY RIDGE CONGREGATIONAL METHODIST CHURCH
Rt. 13 North of Greenwood, Del.
Rev. William Fleischer
Sunday School 10:00 a.m.
Morning Worship 11:15 a.m.
Evening Worship 7:00 p.m.

Wednesday
Prayer Meeting 7:00 p.m.

HOUSTON UNITED METHODIST CHURCH
Morning Worship 9:30 a.m.
Sunday School 10:45 a.m.

INDEPENDENT BIBLE FELLOWSHIP CHURCH
West Liberty Street
Rev. Ray Newman
Sunday School 10:00 a.m.
Sunday Worship 11:00 a.m.
Sunday Evening 7:30 p.m.

Wednesday
Evening Service 7:30 p.m.

MT. ZION A.M.E. CHURCH
Greenwood, De.
Rev. Thomas Cartwright
Sunday School 10:30 a.m.
Morning Worship 11:00 a.m.
Evening Service 7:00 p.m.

REFORMATION LUTHERAN CHURCH
613 Lakeview Avenue Milford, De.
Rev. John D. Rannee
Sunday Church School 9:30 a.m.
The Service of the Word 11:00 a.m.

REFUGES TEMPLE REVIVAL CENTER
629-4355
Sunday School 11:00 a.m.
Youth Service 1 p.m.
Evening Service 8:00 p.m.
Monday Prayer 7:30 p.m.
Tuesday Worship Service 7:30 p.m.
Thursday Bible Study 7:30 p.m.
Broadcast Mon.-Fri. 9:30 a.m., WSPD, Seaford.

SEALED AIR TABERNACLE
Rd. 571 off Rt. 16
Adamsville, Greenwood 349-4876
Rev. Roy G. Murray
Sunday School 10:00 a.m.
Worship Service 11:00 a.m.
Praise Service 7:00 p.m.
Tuesday Worship 7:30 p.m.
Friday Youth Activities 7:30 p.m.

Sponsors of Spirit and Life Christian School

ST. JOHNSTOWN UNITED METHODIST CHURCH
Worship Service 9:00 a.m.
Sunday School 10:00 a.m.
Sermon every other Sunday

ST. PAUL'S A.M.E. CHURCH
101 Missillion St. Harrington, De. 398-8966
Church School 9:30 a.m.
Worship Service 11:15 a.m.

Wednesday
Bible Study 7:00 p.m.

GRAHAM A.M.E. CHURCH
Greenwood, De.
Rev. J. Jackson
Sunday School 9:00 a.m.
Worship Service 10:00 a.m.
Afternoon Service 1:00 p.m.

ST. STEPHEN'S EPISCOPAL CHURCH
Roughley Hill Road 398-3710
Sunday School 10:00 a.m.
Church School & Adult Study 9:30 a.m.
Divine Worship 10:45 a.m.

Wednesday
Evening Prayer & Healing Service 7:00 p.m.
Bible Study (3rd Wednesday) 7:45 p.m.
Holy Eucharist 7:00 p.m.

Thursday
Choir Practice 7:30 p.m.
2nd Sunday
Vestry Meeting 12-15 p.m.
Songs and Praise 7:00 p.m.

DENTON CHURCH OF THE NAZARENE
Rt. 313 North
Rev. Lee Shafer
Sunday School 10:00 a.m.
Morning Worship & Junior Church 10:45 a.m.
NYL 6:30 p.m.
Evening Worship 7:00 p.m.

Wednesday
Prayer Meeting 7:30 p.m.

LINCOLN-MILFORD HARRINGTON CHARGE
Rev. Rudolf Das Garnes
Wesley Chapel, Slaughter Neck
Morning Worship 9:00 a.m.
Church School 10:30 a.m.

St. Paul, Milford
Morning Worship 10:30 a.m.
Church School 11:45 a.m.

Metropolitan, Harrington
Church School 11:00 a.m.
Morning Worship 12:00 p.m.

TRINITY UNITED METHODIST CHURCH
6 Front St., Frederica, Del. Sardis, Thompsonville
Worship 9:00 a.m.

Caxton, Bowers Beach
Worship 10:00 a.m.

Trinity, Frederica
Worship Service 11:00 a.m.
Sunday School 10:00 a.m.

WEST HARRINGTON UNITED METHODIST CHARGE
Rev. Wm. A. Markley 398-8367
Trinity-Harrington
Church School 10:00 a.m.
Worship 11:00 a.m.
1st & 3rd Sunday nights, U.M.Y.F. 7:30 p.m.

Prospect-Vernon
Church School 8:45 a.m.
Worship 9:45 a.m.
1st & 3rd Sunday nights, U.M.Y.F. 5:30 p.m.
3rd Wednesday every month Family night covered dish dinner 7:00 p.m.

Salem-Farmington
Worship 8:45 a.m.
1st & 3rd Sundays, Church School 9:30 a.m.

Bethel-Andrewsville
Worship 8:45 a.m.
2nd & 4th Sundays, Church School 9:30 a.m.

WHOLE TRUTH TEMPLE CHURCH OF GOD IN CHRIST
Bowers Chapel Rd., Viola, Del. 697-2851 or 284-9911
Elder Robert L. Williams
Sunday School 10:00 a.m.
Morning Worship 11:00 a.m.
Evening Worship 8:00 p.m.
Friday Service 8:00 p.m.
4th Saturday of each month Youth Fellowship Service 8:00 p.m.

FELTON UNITED METHODIST CHARGE
Felton, Del.
Viola
Worship Service 9:00 a.m.
Church School 10:00 a.m.

Manusip
Worship Service 10:00 a.m.
Church School 11:00 a.m.

Felton
Worship Service 11:00 a.m.
Church School 9:45 a.m.

Harrington Baptist Church

Wednesday, 7:00 p.m. - Community Thanksgiving Service at Calvary Wesleyan Church. Rev. Watson will bring the annual message. Please bring an item of food for the food basket.

Thursday, 9:00 a.m. - We shall gather at the church for an informal worship service.

Wednesday, Dec. 2nd, 6:30 p.m. - A foreign mission cuisine dinner will be held to celebrate the Lottie Moon Christmas offering and Week of Prayer. During that time a film on French-speaking West Africa will be shown. Our church mission offering goal is \$600.

Saturday, Nov. 28, 5:30 p.m. - The marriage of Tammy Jester to Charlie Brandner will take place. You are

invited to share in their joy. The reception will follow in the fellowship hall. The Week of Prayer for Foreign Missions, Nov. 29th, thru Dec. 5th with special meetings taking place Nov. 30th to Dec. 4th.

"Give thanks always for all things unto God and the Father in the name of our Lord Jesus Christ." Ephesians 5:20.

"Giving thanks always for all things." No loopholes are provided. All seasons and all events are included. We do not give thanks to God that disaster has overtaken us, but we can give thanks to Him in the disaster. Thanks to God is the believer's way of acknowledging that in every time and season God's grace is sufficient and his love reaches out to us, seeing us through.



Asbury UMC

On Wednesday, Nov. 25, the Community Thanksgiving Service will be held at Calvary Wesleyan Church at 7:00 p.m. with Rev. Duke Watson as speaker. Please bring a gift of non-perishable food for the food cupboard. An offering will be received to replenish the community Emergency Fund.

Sunday, Nov. 29 is the first Sunday in Advent. There will be an "Area Choir Service" at Asbury at 4 p.m. Our Chancel and Cathedral choirs will join choirs from Metropolitan and Trinity to bring us a program of inspiring music. All are welcome. Bring a friend, too.

The Tuesday afternoon Bible Study group will be studying Revelations at the first of the year. Clara Judy is the teacher. Anyone wishing to join is most welcome. Please contact Pauline Hopkins soon so a book can be ordered for you.

Obituaries

RUTH T. PECK
HARRINGTON-Ruth T. Peck, died Friday, Nov. 20, 1981, at her home, 205 Simmons St., after a long illness. She was 54.

Mrs. Peck was editor several years ago of Asbury United Methodist Church's Newsletter, the Asbury Visitor. She was also chairperson of the membership committee of the Harrington Church.

She is survived by her husband, Thomas H.; a son, Kevin T., of Bryn Mawr, Pa.; a daughter, Candace Houghton, of Dover; her mother, Maggie M. Taylor; and a sister, Hilda C. Taylor, both of Preston, Md.

Services were at 2 p.m. at Asbury United Methodist Church, 200 Weiner Ave., where friends called an hour earlier.

Burial was in Hollywood Cemetery, Harrington.

Instead of flowers, the family suggests contributions to Asbury United Methodist Church memorial fund, 200 Weiner Ave., Harrington, 19952, or the Kent County Chapter of the American Cancer Society, 5 E. Reed St., Dover, 19901.

RUTH ANN WILLIAMSON
BRIDGEVILLE-Ruth Ann Williamson, of 204 S. Main St., died Thursday, Nov. 19, 1981, in Nanticoke Memorial Hospital, Seaford, after a long illness. She was 59.

Mrs. Williamson retired two years ago as head cashier of the Acme Market in Milford after 24 years of service.

Her husband, Dorsey E., died in 1966. She is survived by two sons, Jerry E., of Bridgeville, and Harry D. of Laurel; two sisters, Alice L. Hammond, of Bridgeville, and Jacqueline Phillips, of Wilmington and five grandchildren.

Services were Sunday at 2 p.m. at the Hardesty Funeral Home, 202 Laws St. There was no viewing.

WILLIAM N. WROTEN
MILFORD-William N. Wroten Sr., 67, of South Washington Street died Thursday, November 19, in Milford Memorial Hospital after a short illness.

Mr. Wroten was a construction worker for many years with George & Lynch Inc. in Dover until he retired in 1977.

He is survived by his wife, Edith L.; four sons, Gary R. of Cherry Hill, N.J., William N. Jr. of Crisfield, Md., William T. of Magnolia and Randy L. of Milford; a brother, Phillip of Dallas; five sisters, Louise West of Delmar,

Hilda Rintz and Ruth Wroten, both of Mocksville, N.C., Edna Melzer of Baltimore and Dorothy Hemp of Orlando, Fla.; 12 grandchildren, and two great-grandchildren.

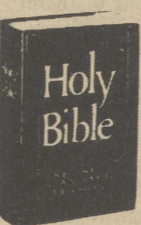
Services were Saturday afternoon at 2:30 at the Lofland Funeral Home, 219 S. Walnut St., where friends called after noon. Burial was in Odd Fellows Cemetery, Milford.

AIMEE SUZANN UFFNER
WICHITA, Kan.—Aimee S. Uffner, formerly of Milford, was killed Tuesday, Nov. 17, 1981, when she was shot to death. She was 15.

Miss Uffner was a 10th grade student at Northwest High School, in Wichita. She attended Milford Lakeview School before she moved to Kansas about a year and a half ago.

She is survived by her parents, her father, Martin Uffner, of Milford; and her mother Cecil Browning, Wichita; one brother, Jeffrey of Milford; one sister, Shelly Uffner, also of Milford; her paternal grandparents, Mr. & Mrs. Martin Uffner, of Philadelphia; and her maternal grandmother, Emma Lou Browning, of Dover.

Services were at 1 p.m. Saturday at Avenue Methodist Church, Milford, where friends called two hours earlier. Burial was in Odd Fellows Cemetery,



JOSEPH R. YUTZY
GREENWOOD-Joseph R. Yutzy, an independent truck driver from near Greenwood, died Monday, Nov. 16, 1981, when his truck ran off the Pennsylvania Turnpike near Mount Pleasant. He was 30.

He is survived by his wife Ruby; two sons, Jay and Weston, and a daughter, Joy, all at home; his parents, Mr. and Mrs. Ralph Yutzy, of Plain City, Ohio; a brother, Daniel, of Plain City; three sisters, Lena Yutzy, of Phoenix Ariz., and Rachel Zehr, and Ruth Zehr, both of Crogan, N.Y.; his paternal grandmother, Florence Yutzy, of Plain City; and his maternal grandmother, Elizabeth Kauffman, of Jamesport, Mo.

Services will be 2:30 p.m. Thursday at the Greenwood Menonite Church with burial in the adjoining cemetery.

Friends may call tonight at the Fleischer Funeral Home, Greenwood.

CLEMENT J. NEVIN
MILFORD-Clement J. Nevin, 74, of Southeast Fourth Street, died Sunday, November 15, in Milford Memorial Hospital after a short illness.

Mr. Nevin retired in 1968 as a warrant officer. He spent 38 years in the Army and the National Guard. He was commander of the state Veterans of Foreign Wars from 1964-1965. He was also past commander of VFW Post 6483 in Milford.

He is survived by his wife, Rebecca M.; a daughter, Kathleen Mahoney of Boston, and a grandson.

Mass of Christian Burial was offered Wednesday morning at 11 at St. John's Catholic Church, Seabury Avenue.

Friends called Tuesday, November 17 at the Lofland Funeral Home, 219 S. Walnut St., where prayers will be offered at 7. Burial was in Odd Fellows Cemetery, Milford. Instead of flowers, the family suggests contributions to the memorial fund of St. John's Catholic Church, Seabury Avenue, Milford 19963.

ember 16, in the Wilmington Medical Center Delaware Division after a long illness.

Mrs. Greenley's husband, William S., died in 1977. She is survived by four sons, Victor, Robert, Joseph and Wesley, all of Frederica; five daughters, Lillian Young of Wyoming, Wanda O'Day of Dover, Edith Davis of Oak Ridge, Mo., and Kay Stevens and Fay Stevens, both of Frederica; a brother, Linwood Killen of Wyoming; a sister, Catherine Jolly of Wilmington; a half brother, Ernest Long of Wyoming, and 18 grandchildren.

Services were Friday afternoon at 1 at the Berry Funeral Home, Main Street, Felton, where friends called Thursday night. Burial was in Barratt's Chapel Cemetery, Frederica.

MARY E. JONES
GREENWOOD-Mary E. Jones, of Main Street, died Wednesday, Nov. 18, 1981, at her home, after a long illness. She was 91.

She is survived by a sister, Sadie Hill, of Greenwood. She never married.

Funeral services were 11 a.m. Saturday at the Fleischer Funeral Home, Greenwood.

Burial was in Hollywood Cemetery, Harrington.

<p>Wooten Insurance Agency "One Stop Insurance" The Hartford 11 Market Street Frederica, DE 335-5148</p>	 Datsun Dealer of Datsun, AMC, Jeep, Renault	<p>Wm. Moore Agency Felton, Del. Phone: 302-284-4511</p>	<p>Gulliver's Travel, Inc. 1255 south state street dover, delaware 19901 (302) 678-3747 ANDY HARRO'S president</p>	<p>"Complete Banking Facilities" At The Peoples Bank of Harrington Phone 398-3256</p>
<p>Sussex Lumber & Home Center, Inc. Seaford, Delaware 629-6622</p> <p>Store Hours: Mon.-Fri. 7:30-5:00 Sat. 8:00-4:00</p>	<p>Tulls Hardware Home and Garden Center Stein Hwy - Seaford 629-3071</p>	<p>Quillen's Dairy Market Dorman St. Harrington, Delaware 19952</p>	<p>Taylor and Messick, Inc. Harrington, Delaware 19952</p>	<p>B&B Music Hours-Mon.-Thurs. 9-6 Fri. 9-9, Sat. 9-5. 205 S. Dual Highway Camden-DE Ph. (302) 697-2155</p>
<p>WATKINS TRUCKS, INC. RICK CRAIG MANAGER 398-4723 RT. 13 HARRINGTON, DE</p>	<p>Complete Insurance L & W AGENCY Insurance Protection 1154 S. Governors Ave Dover Phone: 674-3500</p>	<p>Harrington Foodrite Quillen Shopping Center Harrington, DE</p>	<p>BALDWIN Village Keyboards PIANOS & ORGANS GUITARS JIM BOUREY 302-674-3890 RODNEY VILLAGE S. CTR. DOVER, DE 19901</p>	<p>GRUWELL AND SON GREENHOUSES "Opening the Country Market with Farm Fresh Produce" Rt. 13 South Harrington, DE. 398-8496</p>
<p>Compliments from CALLIS-THOMPSON, INC. Liquid Handling Equipment Rt. 13 Harrington</p>	<p>Compliments to the Church Community from AETNA SHIRT CORPORATION 51 Clark St. Harrington</p>	<p>W-GRADE DAIRY INC. Processor and Distributor Grade A Dairy Products 97 Clark St. Harrington, Del. Phone 398-8321</p>	<p>COOK'S TIRE CENTER II New *Used *Blemish Tires 12 Clark St. Harrington, DE 19952 Phone: 398-3751 Ask For Dave</p>	<p>PECK BROS. FARM SUPPLY CO. Southern States Agency Harrington Ave. Harrington</p>
<p>Roughley Insurance Service "All Kinds of Insurance" Tom Parsons Harrington, Del. Phone 398-3551 398-3000</p>	<p>First National Bank of Harrington Commerce St. Harrington, Delaware 19952</p>	<p>BOB C. 302-284-9024 ED M. 302-674-2982 C&H TRUCK BROKERS, INC. DON HARDING P.O. BOX 236 HARRINGTON, DE 19952 398-4226</p>	<p>"GUITARS ARE OUR SPECIALTY" STEELE'S MUSIC HOUSE FELTON, DEL. 19943 TELEPHONE: 284-9849 INSTRUMENTS LESSONS ALBERT L. STEELE - INSTRUCTOR</p>	<p>Nanticoke Homes, Inc. 349-4561 678-3636 P.O. Box F Greenwood, Delaware 19950</p>

BUSINESS DIRECTORY

FURNITURE 11-25	CLEANERS 11-25	BUSINESS SERVICE 12-9	HOME SALES 12-16
THE FURNITURE BARN  Appliances Furniture DELIVERY AVAILABLE 284-9009 10-6 Mon-Fri. 9-4 Sat. 12-4 Sun. Water St. Felton	Capitol Cleaners & Launderers, Inc. Fur & Wool Storage "Bring us your fall wardrobe & back to school clothes to be cleaned" Free Pick-up Four Locations 674-0500 & Delivery	 AARON'S <i>Business Services, Inc.</i> 309 South State Street Dover, Delaware 19901 (302) 734-4411 Typing, Xeroxing, Mailing, Notary, Wake-up, Office Space, Phone Number, Mail Forwarding.	 HIGH POINT HOME SALES, INC. For Over 20 Years THE BEST IN THE STATE FOR LESS All Types of Manufactured Housing 5 Miles S. DATE Rt. 113 and 113A 335-5443
TV 12-16 LAVERE'S TV 697-2167 ANTENNA SALES & SERVICE Camden, Delaware	LIMESTONE 12-23 Martin's Limestone Magnesian or calcium BENTON G. HILL Phone 422-8554 Milford Delaware	CONSTRUCTION 11-25 B & J Construction Co. •Concrete Finishing •Sidewalks •Basement Floors •Driveways •Patios •Footers Free Estimates ••••• Low Rates No Job Too Large or Small 398-4342 349-5482	 When carving meat, cut against the grain.
MOBILE HOME LOTS 12-2 HIGH POINT MOBILE HOME PARK DELUXE MOBILE HOME LIVING •LARGE LOTS • PLAYGROUNDS •CONVENIENT LOCATION • POOL •Laundromat U.S. 113&113A Frederica. 335-5444	 Add a cup of water to the bottom of broiling pan before sliding into the oven. The water absorbs smoke and grease.	INVESTIGATOR 12-23 PRIVATE INVESTIGATOR Licensed by the state of Delaware Retired Policeman, William W. Shipley, Sr. Criminal & Domestic Cases 734-9387	CONCRETE-SAND TF Stayton's Sand & Gravel, Inc. Concrete & Mortar Sand Topsoil Stone Select & Regular Fill Dirt Delivered or Loaded on Your Truck PIT LOCATION: 1 Mile off Rt. 14 Milford: Harrington Rd West side of Road 384 Office: 284-9178
MOBILE HOME LOTS 12-2 BURNS TROPICAL FISH & PET SHOP Birds Special on Albino Ferrets Rd9 4mi. East of Georgetown at Gravel Hill 422-2421 856-2185	CONSTRUCTION 1-6 SEPTIC SYSTEMS - EXCAVATING LOT CLEARING - FILL DIRT Dozer Work  FANNIN CONSTRUCTION COMPANY R.D. 3 - BOX 207-N HARRINGTON, DE. 19952 DAY - 302-422-5456 BILL FANNIN - OWNER EVENINGS - 302-349-4277	MUSIC TF Hours: Mon. - Thurs. 9-6 Fri. 9-4 Sat. 9-5  CONN SELMER LUDWIG CABLE SOHMER WURLITZER CURRIER 205 S. Dual Highway Camden, Delaware 19934 Phone: (302) 697-2155	EQUIPMENT TF Taylor & Messick, Inc. JOHN DEERE FARM EQUIPMENT LAWN AND GARDEN EQUIPMENT Sales and Service By Two-Way Radio Phone: 398-3729 Harrington, De.
FURN. REFINISHING 11-25 TURCO PAINT  MINWAY ANTIQUE Furniture Stripping ROAD 370 NEAR KENT CENTER WOODSIDE, DEL. Phone 302-497-3550	PLUMBING & HEATING 11-25 Harrington Plumbing & Heating Supply All kinds of service work Free estimates on jobs Meyers & Gould Pumps 398-8877	FUEL OIL 1-27 Peninsula Oil Co. Fuel Oil, Kerosene, Gasoline & Burner Service. 24Hour Service for Regular Customers Radio Dispatch Truck Automatic Delivery of Oil Level Payment Plans Available Shaw Ave. & Rt. 13, Harrington, De. 398-8344	HEATERS 11-25 CORONA "Your first choice in portable heaters" Sales On Our Full Line Of Heaters J.J.'s Gulf Station Frederica, DE 335-3965 
ALL SEASONS NURSERY & GARDEN CENTER Do - It - Yourself Christmas Shop NOW OPEN 1325 Governors Ave. Just North of Webb Lane 8:00 to 5:30 Daily Sunday 10:00 to 5:00 734-2060	REAL ESTATE 12-16  HARRY G. FARROW, JR. BROKER HOME (302) 398-3250 FARROW Realty 17 Commerce Street Harrington, Del. 19952 OFFICE (302) 398-3455 MLS	MILFORD AUTO TRIM & GLASS, INC. Vinyl Tops • Seat Covers • Carpets Truck Cushions & Upholstery Auto Glass Windshields PHONE (302) 422-2407 P. O. BOX 294 316 Rehoboth Blvd. Milford, DE 19963	
BOWLING 2-3  Milford Brunswick Lanes Leagues & Open Bowling Nightly 422-9456	COCKTAILS 12-2 KENT & SUSSEX INN Cocktails - Package Store 24 N.W. Front Street Milford, Delaware Phone 422-4551	MEN'S CLOTHING 11-25  King's Quality Men's Clothing 31 Olde Dover Plaza Dover, Delaware 734-2525	LUMBER 12-23  Simpler LUMBER & COAL CO. •P.P.G. Paints •Building Hardware •Roofing •Insulation •Siding •Weldwood Paneling "Everything to do it yourself" Rt. 13 Now at two locations: R.R. Ave. 398-4204 Felton 284-4554
BUILDING SUPPLIES 12-9 Woodside Surplus Sales Lumber, Windows, Siding, Doors, Molding, Plywood, Roofing, Insulation, Refinishing, Paneling, Everything for the Builder & Homeowner - 3/4 Mi. South of Woodside Traffic Light on S. Bound Lane of U.S. 13. Weekdays 8-5 Sat. 8-1 284-4134	COINS 12-2  CASH FOR YOUR SILVER COINS (prior 1965) CLAD Half Dollars Sterling Silver & Gold (1965-1969) Certified Wts. to within .01 oz. of a gram The Dover Army/Navy Store Call 736-1959 for current prices	WOODSTOVES 11-25 JOHN PICKETT Concrete Construction Patios Floors Driveways Sidewalks Steps Walks Residential & Commercial Harrington-Milford Hwy. 398-8159	THRIFT SHOPS 11-25 NEARLY NEW BOUTIQUE \$\$\$\$\$\$ Thrift Shops NEW FALL ARRIVALS MILFORD 422-6856 CAMDEN 697-6866 OPEN 10-5 DAILY - CLOSED SUNDAYS 100 N.E. Front Street (Across From Fishers)
 How about a shower for prospective grandparents? Gifts should be items needed when the new baby comes to visit: spoons, dishes, toys, bibs and the like.	CONSTRUCTION 12-9 EDWIN L. BRADLEY New Homes - Remodeling Additions - Roofing General Contractor & Builder 422-6358 We Aim To Please Cedar Neck R.D. 1 Box 448A Milford, DE 19963	WOODSTOVES 11-25  THE VILLAGE COUNTRY STORE Woodstoves 'n Stuff EVERYTHING UNDER THE SUN FOR THE ENERGY CONSCIOUS PROPRIETORS 1534 SOUTH GOVERNORS AVE LAURLIN & SCOTT BEDWELL DOVER DE 19901 (302) 734-2737	AUTO 1-6 Fitzgerald's Auto Salvage Top Scrap Prices For Autos - Metals - Batteries - Industrial Scrap, Etc. <i>Remember, Jesus Recycles People, We Recycle Cars.</i> Sussex 856-3994 Lincoln 422-7584
 Chopped dried fruits make a tasty enrichment for cooked cereals (skip the sweetener), fruit salads, vegetable salads, rice, cookie and cake batter. Add to yogurt or cottage cheese for breakfast or lunch.	 No one has ever discovered two snowflakes with exactly the same crystal pattern.	COUNSELING 12-2  KENT COUNTY COUNSELING SERVICES CENTER FOR SUBSTANCE ABUSE TREATMENT-PREVENTION- INFORMATION-736-4548 811 S. GOV. AVE. DOVER, DEL. 19901	HEATER CLEANING 12-16 Have your heater cleaned by us & increase the efficiency by 25% Alfred J. Gillis 222 S. R.R. Ave. Dover 736-1898 
HARDWARE TF TAYLOR'S HARDWARE Wallpaper Benjamin Moore Paint Full Line of Paint & Wallpaper Supplies COMMERCE & DORMAN STS., HARRINGTON 398-3291	 It is said that we should expect a bad winter if birds begin eating up all the berries early.	ENTERTAINMENT 12-2 Mr. & Mrs. Santa Claus Now booking for: PHONE CALLS HOME VISITS XMAS PARTIES & STORE APPEARANCES 734-3234 	 Bats range in size from a wingspan of over five feet to one of under two inches.

Creosote build-up causes chimney fires

These days, many people are enjoying the warmth and cheer of a fireplace or wood stove. Unfortunately, this warmth and cheer has given rise to an increasing number of dangerous chimney fires, points out Delaware extension safety and energy specialist Ronald Jester. Every year in the United States there are thousands of such fires resulting in over 20 million dollars worth of damage.

Chemical changes occur in wood when it is burned. As a result, gases and tiny droplets of tar and water are released as smoke. The heat generated by these burning gases accounts for a large percentage of the wood's total heat output. However, these gases will not ignite until the fire's temperature has reached 1100 degrees Fahrenheit.

Because wood combustion is never perfect, smoke going up the chimney always contains some of the unburned gases and tars. If the chimney's inner surface is cooler than the smoke, as it almost always is, then some of the unburned gases and tars will condense out of the smoke onto the chimney's surface. This condensed material is called creosote. When creosote condenses on a relatively cool surface, it will contain a large amount of water and so will be fluid. If the surface is 150

degrees or hotter, the creosote will contain little water and will be thick and sticky like tar. This tar-like build-up will eventually change to a solid or flaky form.

There is no way to completely prevent the formation of creosote. But it can be minimized by avoiding smoldering fires, by burning seasoned hardwoods, and by using well-designed chimneys.

Air leaks, via cracks in the chimney or in the clean-out doors, provide a source of dilution which lowers the stack temperature and increases the accumulation of creosote. Therefore, for safety as well as maintenance, one should inspect a chimney thoroughly to insure that it is without cracks and that clean-out doors are air tight.

It is important to note that creosote condenses from flue gases when the stack temperature drops below 250 degrees. This means that chimneys which are insulated or interior and allow less heat to escape are preferred, especially for air-tight wood stoves. Most creosote fires are associated with poor chimneys that have low draft, cold walls, and too low a rate of burning.

How do you know that creosote has built up in your chimney or flue? The most obvious way is to inspect the inside of your chimney or stovepipe.

You may also notice back crating and smoking as you load your stove. The connector pipe will also radiate less heat, as creosote is an excellent insulator. If there is more than one-quarter inch of creosote build-up, or if there are small raised bumps of creosote, a cleaning is needed.

Reports from fire victims indicate that a chimney fire is a frightening experience and a potentially dangerous situation. With proper installation and maintenance, regular inspection and cleaning, your chances of a chimney-related fire are remote. Prevention is your best protection. If for some reason you have a fire, here are the signs that you should recognize immediately so that you can respond as quickly as possible:

- A distinct crackling noise in the chimney or stovepipe.
- "Sucking sound" of air being drawn into the stove or chimney. This may increase to a loud roar.
- The stovepipe may shake (beware that it could fall apart spilling flaming creosote).
- The stovepipe may glow red-hot.
- Sparks and flames may shoot out of

the top of the chimney or stovepipe--and you'll probably get phone calls from your neighbors!

A last but very important concern is what to do in case of a chimney fire. Following are some recommendations:

- Call the fire department. You may not need them, but if you do, calling later may be too late.
- Gather all occupants of the building and be ready to leave if the situation worsens.
- Cut off air to the fire. If you are using a wood stove, close all its draft and damper controls. If you have a fire in the fireplace, cover the opening with any rigid, noncombustible material (but beware of strong suction caused by the fire). Do not close the fireplace damper as smoke from the fire in the fireplace will then come into the room.
- Use a fire extinguisher. Best is a flare-like one designed specifically for chimney fires. Ignite it like a road flare and place it inside the stove or fireplace. Regular CO2 extinguishers can also be used.
- Do not pour or spray water directly into the chimney as the rapid contraction caused by sudden cooling may

break some of the tiles.

-Continue to check outer surface of the chimney and any inner walls near the chimney for excessive heat--even after you think the fire is out.

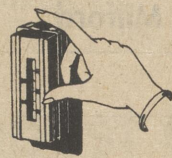
-Check outside to see if sparks and embers blown out the chimney top are igniting roof or brush.

-When the fire's out, sweep the chimney and carefully check for any damage. Resolve to clean your chimney more often.

For more specific information contact your local Volunteer Fire Co. or the Delaware Cooperative Extension Service.

Learning to harness the energy potential of wood is much like working with electricity, says Jester. It's respect, not fear, that allows us to make full use of it--safely.

Energy Savers' Alert



Heating with wood: For the beginner

Many homeowners are installing woodburning stoves as a result of the high cost of heating a home with our traditional fuels: oil, gas, and coal. When you prepare to install your wood stove, protect your home and family by taking necessary safety precautions. Use this checklist before starting the first fire in your stove to be sure it is safely installed.

1. The stove does not have broken parts or large cracks that make it unsafe to operate.
2. A layer of sand or brick has been placed in the bottom of the firebox if suggested by the stove manufacturer.
3. The stove is located on a non-combustible floor or an approved floor protection material is placed under the stove.
4. Floor protection extends out 6 to 12 inches from the sides and back of the stove and 18 inches from the front where the wood is loaded.
5. The stove is spaced at least 36 inches away from combustible material. If not, fire resistant materials are used to protect woodwork and other combustible materials.
6. Stove pipe of 22 or 24 gauge metal is used.
7. The stove pipe diameter is not reduced between the stove and the chimney flue.
8. A damper is installed in the stove pipe near the stove unless one is built into the stove.
9. The total length of stove pipe (light gauge metal connector between stove and chimney) is less than 10 feet.
10. There is at least 18 inches between the top of the stove pipe and the ceiling or other combustible material.
11. The stove pipe slopes upward toward the chimney higher than the outlet of the stove firebox.
12. The stove pipe enters the chimney horizontally through a fire clay thimble that is higher than the outlet of the stove firebox.
13. The stove pipe does not extend into the chimney flue lining.
14. The inside thimble diameter is the same size as the stove pipe for a snug fit.
15. A double walled ventilated metal thimble is used where the stove pipe goes through an interior wall.
16. The stove pipe does not pass through a floor, closet, concealed space or enter the chimney in the attic.
17. A UL approved ALL FUEL metal chimney is used where a masonry chimney is not available or practical.
18. The chimney is in good repair.
19. The chimney flue lining is not blocked.
20. The chimney flue lining and the stove pipe are clean.
21. A metal container with tight fitting lid is available for ash disposal.
22. The company insuring the building has been notified of the installation.

Watch out for misleading claims!

As the weather grows colder and fuel bills soar, people become easy targets for advertised gadgets and devices that promise big energy savings. Many of these claims are exaggerated.

If you went out and bought four or five of these products--each promising anywhere from 25 to 40 percent savings--you might expect to save over 100 percent. But that's not the way it works out.

"Talking in percentages means different things in different houses," says University of Delaware extension agricultural engineer Ernest Walpole. If your fuel consumption is 1000 gallons a year, a 10-percent saving is 100 gallons. But if you've insulated and weather stuffed and cut your fuel use to 500 gallons a year, a 10-percent saving will amount to only 50 gallons. "Generally," says Walpole, "the more energy efficient your house is now, the less you'll benefit from further improvements."

Here are some examples of the more obvious claims you're likely to run into. **Example.** A manufacturer claims you can realize a 15 to 40 percent energy savings if you install his insulated siding.

If you have an old house with no insulation in the walls, the heat loss through them could account for over 40 percent of your fuel consumption. But insulating won't eliminate all that heat loss. If you add insulating siding to a house like that you can cut the heat loss through the walls in half for a fuel savings of 20 percent.

If, on the other hand, your walls are already fully insulated, they account for only 17 percent of your fuel consumption. In this case, adding insulating siding will reduce your fuel bill only three percent.

In other words, the same improvement--in this case siding--will effect a different level of efficiency, depending on the condition of your house before the improvement was added.

Example. An advertisement states, "Our storm windows will cut your heat loss 50 percent. Triple pane windows will save you 40 percent."

These claims aren't too far from the truth, if they told the whole truth, Walpole says. Storm windows will cut

heat loss through the windows by 50 percent, but that's not the only place heat is lost through the structure. The reduction in total fuel consumption will be in the range of 14 to 28 percent, depending on the amount of window area.

Triple glazing will save about 35 percent--not 40 percent--compared to a double pane. Adding the third pane reduces total fuel consumption to an additional six to nine percent, assuming you have a well-insulated, weather-stripped house. If your place isn't energy efficient to start with, though, these savings could be cut in half.

Example. "Flue dampers will save up to 24 percent on fuel consumption."

Tests by the National Bureau of Standards show possible savings from five to 16 percent, depending on the furnace. Flue dampers on furnaces in unheated areas and in most unheated basements are of little benefit, says the engineer. Flue dampers are not useful with most of the new high-efficiency furnaces.

Example. "Ceiling fans will save up to 35 percent on your annual energy bill." With the average house there would be little, if any, energy savings in winter from one of these fans, unless you have cathedral or other extra high ceilings. The greatest benefit would be in summer when the fan provides comfort on warm days without turning on the air conditioner.

Example. "High-efficiency oil burners will cut your oil bill from 30 to 50 percent."

A nationally known personality claims on TV that his new furnace is saving him 41 percent. To obtain such savings, says Walpole, the man's old furnace must have been a coal furnace that was converted to oil in the fifties. Most oil furnaces installed in the last 20 years will operate at 60 to 65 percent efficiency when properly adjusted.

The new high-efficiency ones operate at 80 to 84 percent efficiency, according to tests at Brookhaven National Laboratories. A 20-percent increase in furnace efficiency translates into a 23-percent savings in fuel consumption. This is a very substantial saving, and anyone in the market for a new furnace should consider these new furnaces very seriously, says the engineer. There are also high-efficiency burners that can be retrofitted to your existing furnace.

ATTENTION WOODSTOVE & FIREPLACE USERS:

We will deliver firewood, cut and split in 16", 18" and 20" sizes, within a 100 mile radius of Salisbury for only \$80.00 a cord if 10 cords are ordered. Join your woodburning friends and neighbors and order your tractor trailer load now! \$85.00 a cord within 125 miles • \$90.00 a cord within 150 miles.

MUST BE 10 CORDS TO QUALIFY FOR THESE PRICES

\$80.00 per cord within 15 miles (single delivery)

Contact us for additional quotes. R & R Bridge Logging Inc. Phone 301-749-7627

FIREWOOD

CLEAN SWEEP

Chimney Caps
Stainless Steel Liners
for Unlined Chimneys
Professional
Dust Free
Licensed
Insured
FREE ESTIMATES

Have your chimney cleaned: A woodstove or fireplace insert should be cleaned once a year; a fireplace can vary from 1-3 years, depending upon usage.

Burn a hot fire: Most people try to treat a woodstove like an oil heater. If it's too hot, they turn the air down. DON'T. When you turn the air back, you are on the way to a creosote buildup.

If you have any questions, please contact us at 422-6085.

Call Now - Ernie Hostedler 422-6085

BEAR Front End Alinement Specialists

Trucks - School Buses
Pickups - Autos

Call for an appointment

E.B. Warrington, Jr., Inc.

U.S. 13, Felton 284-9691

We would like to serve you!

HEAT FOR LESS

Aladdin KEROSENE HEATERS

The standard of excellence in portable kerosene space heaters... for over 35 years.

Aladdin TEMP-RITE™ 10 Portable Radiant Kerosene Heater

SALE \$219.00

Aladdin EQUATOR™ Portable Convection Kerosene Heater

SALE \$225.00

Start saving money today! Aladdin heaters are over 99% efficient and designed to be easily carried anywhere. Your central heating system is only 45% to 65% efficient and wastes additional heat by continuously heating unoccupied space. Turn down the thermostat from 72° to 62°, and you can lower the costs of your central heating system by as much as 30%. ...lower it to 55°, and you can save even more! Then, use an Aladdin heater to warm the area you're in...for just pennies per hour.

Every Aladdin Heater has these state-of-the-art features:

- Adjustable heat output
- Automatic lighting-no matches needed
- Automatic shut-off if tipped or jarred
- Long-lasting glass fiber wick
- Lightweight, portable design
- Chrome safety guards
- Polished chrome heat reflectors
- Attractive designer styling
- Parts and service
- Guarantee

SAM YODER'S HARDWARE

Rt. 36 Staytonsville Greenwood, Delaware 302-422-6604

WAMCO

DON'T BE FUELISH!

CALL US FOR YOUR BURNER EFFICIENCY TEST TODAY!

HEATING HOT WATER DRAIN CLEANING ALL PHASES OF PLUMBING & HEATING

For All Your Needs **DIAL 398-4631**

SAVE ENERGY

"THE ONE YOU HEARD ABOUT"

KERO-SUN

PORTABLE KEROSENE HEATERS
Advertised Nationally

Radiant 10 9400 BTU's Burns up to 37 Hours on 1.92 Gallons

OMNI 105 19,500 BTU's Burns up to 18 Hours on 1.99 Gallons

Don't buy a look alike or just as good. We specialize in KERO-SUN portable heaters with 3 years experience. The No. 1 KERO-SUN. Check our prices before you buy.

We Now Sell Sampo Televisions

Booz Portable Heaters

Frederica, DE 422-7153 or 422-2234

Open 8 - 8 Monday thru Saturday

Financing Available

Home decorating can help conserve energy

By Jean Cranston,
Extension Home
Economist, Kent County

ENERGY-SAVING DECORATING TECHNIQUES

Walls:
If you plan to paint, select energy-saving colors. Light colors, such as white and pale yellow, reflect light and make your rooms look brighter. Rooms with light-color backgrounds require lamps with less wattage for illumination. Pastel shades such as pink, green, blue and beige, will reflect some light. Dark colors, such as brown, gold, earth-tones, rust and red, absorb

rather than reflect light; so rooms decorated in these colors will need more artificial lighting.
Select a light color for wood paneling and wallpapers because darker colors seem to swallow light.
Windows:

Create a bright environment and utilize solar energy with window treatments. Maximize sunlight with sheer casement fabrics for windows. These fabrics have an open weave to let in light and warmth from the sun. They can be teamed with heavier

draperies which close to conserve heat at night. During the hot summer days the closed draperies can be closed to keep out daytime heat and open to let in cooler night air.

Drapery lining types fall into four categories: separate, self-lined, acrylic backings and foam backings.

Insulated lining fabrics are available for separate linings. This helps keep rooms warmer in winter, cooler in summer.

There are insulated glass fiber linings available for glass-fiber drapery fabrics. The linings perform compatibly with the drapery fabric in washing and durability. In addition to the properties of insulation, lined glass-fiber draperies will also create light filtration without blocking out all the sunlight.

Some drapery linings are actually part of the drapery cloth. The self-lining is a satin weave on the drapery back that gives a uniform, decorative appearance from the outside. This type is used more for appearance than for insulation.

Bonded process acrylic-back linings give added body as well as some insulating properties and foam-backed draperies—available on both synthetic and glass fiber fabrics—form an insulating barrier.

Other considerations that will add to the insulating properties of draperies are: extending the drapery and curtain rods beyond the window frame, making draperies floor length if they do not interfere with the heat source. If heat source is under the window, keep draperies above it and place a flange at the top of the heat duct to deflect the heat into the room.

Window shades available today are not only attractive but practical as they can be used as an alternative to draperies or sheer curtains. They can provide a handsome decorative touch to your room, while cutting down heat loss in winter and shutting out the hot sun in summer.

Fabrics vary widely in texture, from sheer to translucent to opaque. Colors and patterns are almost unlimited.

If you want window shades to match draperies or wallpaper, you can have them laminated with the same fabric or paper. There are also shades that are color-coordinated with paint.

The type of window or the desired decorating effect will determine the shade and mounting you choose.

Brackets are available to pull window shades down from the back of the roller, or from the front. There are also ceiling brackets and brackets that can be installed at the floor or sill level and operate on pulley cords. These would provide privacy and control sunlight and fresh air as needed. Roman or bamboo shades also add variety.

FURNITURE SELECTION

Light finishes or bright colors are good selections for room furnishings. Keep in mind, however, that smooth materials seem cold and fuzzy ones seem hot. A lounge chair upholstered in wool will look, and actually be, warmer than a molded plastic chair or an open chair of rattan or wicker.

The amount of furniture seems to affect our physical temperature; a crowded room, for example, looks warm.

FLOOR COVERINGS
Wall-to-wall carpeting adds warmth and insulation to your home.

EMERGENCY MEASURES

1. During cold weather, slipcover open-back and open-arm chairs with a quilted fabric to help hold body heat.

2. Hang quilts, blankets or make a drapery to close off unused rooms if there are no doors.

3. Large wall hangings (attractive hooked rugs, braided rugs or tapestries) may be used to cover an unused door or a window.

4. Make a "draft-dodger" (see below) to put at an outside door bottom.

5. If you have a window air conditioning unit on your second floor, use a blanket, drapery, bedspread or the like at the top of the stairs. This will keep rooms comfortable for sleeping by keeping the cold air on the second floor.

6. If you turn on your air conditioning, lower windows a few inches from the top. This allows the cool air to push the hot air out. About five minutes should be enough time.

7. Open attic windows to provide air circulation. This helps keep the other floors cooler.

8. Exhaust fans placed in the louvers of attics pull hot air from the house.

9. In arranging furniture, don't

obstruct heating or cooling vents. Arrange furniture to take advantage of the sunlight. Put furniture closer together to make the living area seem cozier and warmer.

DRAFT DODGER

These directions for making a draft-dodger were provided by Dorothy C. O'Donnell, Extension Interior Design Specialist at the University of New Hampshire.

Here's what you need:
-Fabric for inner tube. Choose sturdy hard surface, tightly woven denim, gabardine or twill.

-Fabric for outer tube. Choose durable tightly woven fabric in deep colors to complement interior color plan.

-Heavy duty thread.

-Sand. Fine, with no stones or salt. Sift sand using a colander.

Here's how to figure amounts needed:
-Measure door and casing width.

-Measure fabric for inner tube. Width - 8 inches; length - use door and

casing measurement plus 2 inches for sewing.

-Measure fabric for outer tube. Width - 9 inches (2 inches seam allowance; 1 inch for ease); length - same as for inner fabric tube.

-Amount of sand depends on length. A 38-inch draft-dodger took enough sand to fill a 1-pound coffee can 3 times.

Here's how to make:
-Fold inner tube fabric lengthwise and sew along length and one end.

-Leave one end open. Turn tube right side out.

-Fill tube with dry, sifted sand. Pack firmly (but not hard) so tube is flexible.

-Seam end by folding in raw edges and top stitching.

-Make outer tube as you did inner tube, leaving one end open. Turn right side out.

-Fit sand tube into finished outer tube. Fit should be snug. Adjust in place.

-Fold in ends and top stitch.

Energy Saving Tips

1. Fireplaces should have tightly fitting dampers which can be closed when the fireplace is not in use. Open dampers allow the natural draft of chimneys to pull warm air out in winter, cool air out in summer. In the heating season, the water vapors emanating from bathing and cooking are beneficial because they help humidify the home. So, use kitchen and bath exhaust fans sparingly.
2. Locate the heating thermostat on an inside wall and away from windows and doors. Cold drafts will cause the thermostat to keep the system running even when the rest of the house is warm enough.
3. Set the heating thermostat as low as comfort permits. Each degree over 68F can add three percent to the amount of energy needed for heating; each degree below 68F can save about the same.
4. When entertaining a large group during the heating season, lower the thermostat a degree or two before the guests arrive. Otherwise, since people generate heat, the space may become wastefully overheated.
5. Lubricate pump and blower bearing regularly in accordance with manufacturers recommendations to limit the amount of energy lost to friction and to extend equipment life as well.
6. Close heating vents and radiator valves in unused rooms.
7. Make sure that registers for supply or return air are not blocked by drapes or furniture.
8. Have your furnace checked once a year to make sure the unit is as efficient as possible.
9. Check the ductwork for a forced-air system, especially at connection points. Fix leaks with duct tape or caulking.
10. Close the damper when you're not using the fireplace so that warm room air doesn't escape up the chimney.
11. Install glass doors on your fireplace to reduce heat loss up the chimney. You can still enjoy the warmth of the fire.
12. Don't insulate over eave vents or on top of recessed lighting fixtures or other heat-producing equipment on the attic floor. Also, keep insulation at least 3 inches away from the sides of these types of fixtures.
13. Test your windows and doors for airtightness. Move a lighted candle around the frames and sashes of your windows. If the flame dances around, you need caulking and/or weatherstripping.
14. Consider the advantages of a clock thermostat for your heating system. The clock thermostat will turn the heat down for your automatically at a regular hour before you retire and turn it up again before you wake. While you can easily turn your thermostat back at night and up again in the morning yourself, the convenience of a clock thermostat may be worth the \$40 to \$90 cost to you.
15. Don't use your fireplace for supplemental heating when your furnace is on unless you take one of the measures suggested below to lessen the loss of heated air from the house.

Lessen heat loss if you use your fireplace when the furnace is on:
-Lower the thermostat setting to between 50 degrees F and 55 degrees F. Some warmed air will still be lost, but the furnace won't have to use as much fuel to heat the rest of the house to these temperatures as it would to raise the heat to 65 degrees F.

CAUTION - Some older people may require higher indoor temperatures above 65 degrees F at all times - to avoid accidental hypothermia, a possible fatal drop in body temperature. People with circulatory problems or those taking certain types of drugs [e.g. phenothiazines, commonly used to treat anxiety and nausea] a physician's counsel on both winter and summer thermostat settings in your home.

Close all doors and warm air ducts entering the room with the fireplace, and open a window near the fireplace about 1/2 inch to 1 inch. Air needed by the fire will be provided through the open window, and the amount of heated air drawn from the rest of the house will be reduced.

If you have a simple open masonry fireplace, consider installing a glass front or a glass screen. This will cut down on the loss of warmed air through the flue.

16. Don't let cold air seep into your home through the attic access door. Check the door to make sure it is well insulated and weatherstripped, otherwise you'll be wasting fuel to heat that cool air.

17. Dust or vacuum radiator surfaces frequently. Dust and grime impede the flow of heat. And if the radiators need painting, use flat paint, preferable black. It radiates heat better than glossy.

STAY WARM AND SAVE

with Corona portable kerosene heaters

A Corona portable kerosene heater gives you clean, dependable heat - when and where you need it. You can turn down the thermostat and stop wasting expensive home heating when you don't even need it. Equals cutting your utility bills all through the heating season - big savings for you!

Corona 17-DK 17,500 BTU/hr. Approx. 640 sq. ft. SALE \$229 Reg. \$249	Corona SP-DK 9,500 BTU/hr. Approx. 350 sq. ft. SALE \$199 Reg. \$219	Corona 22-DK 22,600 BTU/hr. Approx. 800 sq. ft. SALE \$249 Reg. \$269
--	---	--

Variety of Corona heaters available, delivering 7,600-22,600 BTU/hr.

A new generation of high technology heaters engineered to conveniently provide comfortable heat in whatever areas you choose. 99.8% fuel efficiency delivers safe, odor-free heat that's clean, quiet and economical. Rugged construction assures dependable, trouble-free performance...and up to 25% savings on your utility bills...year after year. Choose the model that's right for your home.

SIS'S DELI
Laurel-Sharpstown Road
Across from Laurel Airport
Laurel, Delaware - 302-875-2881
HOURS: Monday - Saturday
8 a.m. to 8 p.m.
Sunday 9 a.m. to 5 p.m.

CLEARANCE SALE ON WOOD STOVES

Buy Now and Save Big!
Quality Wood Stoves by Atlanta Stove Works

Atlanta Stove, warming American homes since 1889.

Double Door Welded Steel Construction
Regular Price \$499
SALE \$399

Model 3418 Wood & Coal Grate
Regular Price \$442.95
SALE \$299.98

Old Hickory Solid Cast Iron Draft Regulator
Regular Price \$229
SALE \$199

Fireplace Insert
Twin Variable Speed Thermostat Equipped
Blowers
Combustion Chamber - 1/4" Hot Rolled Plate Steel
Regular Price \$699
SALE \$549

8 A.M. to 5:30 P.M.
Monday thru Saturday
Till 9 P.M. Friday

Prices Good For Stock-On-Hand Only

TULL'S HOME & GARDEN CENTER
Stein Hwy. - Seaford 629-3071

REBATE SALE KERO-SUN HEATERS

OMNI 105—19,500 BTU Reg. Price \$289 Our Discount Price \$259 Less Rebate 25 NOW \$214	OMNI 85—13,100 BTU Reg. Price \$259 Our Discount Price 219 Less Rebate 25 NOW \$194
RADIANT 10—9600 BTU Reg. Price \$249 Our Discount Price 209 Less Rebate 25 NOW \$184	RADIANT 8—8200 BTU Reg. Price \$189 Our Discount Price 169 Less Rebate 25 NOW \$144
DIRECTOR—11,700 BTU Reg. Price \$299 Our Discount Price 245 Less Rebate 25 NOW \$220	OMNI 15—8700 BTU Reg. Price \$179 Our Discount Price 159 Less Rebate 25 NOW \$134

Tony Ferrara Discount Appliance Company
MARPLE-SPRINGFIELD SHOPPING CENTER
RT. 1 & 320, SPRINGFIELD, PA. 19064 328-0500

With purchase of any Kero-Sun heater and this coupon thru Nov. 15th, 1981

FREE DELIVERY

Phone orders accepted
NO TAX
If delivered in Delaware

Free Siphon Pump and Batteries

REBATE OFFER THRU NOV. 30th

• **LOWEST PRICES** — Drive a little and Save a lot. If you should see these heaters cheaper anywhere else, we will beat that price plus make it worth your drive to our store.

• **PARTS & SERVICE AVAILABLE**

• **ALLADIN • COMFORT GLOW • SANYO • KERO-SUN**
Over 5000 sq. ft. Showroom — one of areas largest display of Kerosene heaters

Hrs.: Mon., Wed., Fri. 10-9
Tues., Thurs., Sat. 10-5
Open Sundays until 4 P.M.

NEW FALL ARRIVALS with SPECIAL PRICES

from Champion Homes **\$10,995**

14' x 56'

- House type door
- 40 Gal. water heater
- Extra insulation
- 2-Door refrigerator
- Plumbed & wired for washer/dryer
- Hurricane zone construction
- Storm windows & ground straps
- Bay window
- Garden tub (14' x 70')

\$13,595

VILLAGE GARDENS HOMES, INC.

Dual 13, Bridgeville — 302-337-7613
Hours: 10-6 Monday-Saturday

\$22,769

- Shingled roof
- Wood siding
- Extra insulation
- Carpet throughout
- 2-Door refrigerator
- 3/4 Bath—master bedroom
- Storm windows
- Ground straps
- Hurricane zone construction
- Built-in cutting board
- Deluxe drapes

COMFORT GLOW™ Kerosene Portable Heaters.

Now Only \$268.95
Reg. \$299.95

Bring This Ad And Receive A FREE Kerosene Can With Purchase Of Heater.

Enjoy clean, odorless heat wherever it's needed...for pennies an hour. Practically 100% fuel efficient using clean, safe and economical kerosene. Battery-powered starter ignites burner instantly. Automatic shut-off for added convenience, safety. Fuel-siphon pump assures fast, easy filling. Buy now. Save energy costs all winter.

MODEL GC19 A — Output of 19,500 BTU/hour provides extra warmth for extra big heating needs. Push-button electronic starting, long-life stainless steel components. UL approved.

ECONOMY
Auto & Home Supply, Inc.
Sales & Service
Milford, DE 422-8039

Fisher Stoves

NOW ON SALE With Everything To Go! — Colors Available

- 1-Fisher Grandma Bear
- 9 Ft.-Insulated Chimney Pipe
- 1-Chimney Kit
- 1-Elevator Kit
- 1-Drip Free Adapter
- 2-4x4 Wall Boards
- 6 Ft. Black Pipe
- 1-Hearth Board
- 1-Damper

Sale price of \$999 includes all the items listed above—a complete heating system. When you buy this package, you save OVER \$200!

BANKS CO., INC.

REGULAR HOURS
Mon. - Thurs.
8 AM - 5:30 PM
Fri.
8 AM - 8 PM
Sat.
8 AM - 4 PM

4 MILES NORTH MD.-DEL. LINE ON U.S. 113 FRANKFORD, DELAWARE

No Sales Tax

302-732-6627
302-934-8566

SPORTS

Spartans ring bell on Milford Bucs

In a game that proved to be a lot tougher contest for Lake Forest than some had expected, the Spartans downed Milford Friday night in the traditional-season-ending "Battle for the Bell". The Spartans rang in for four touchdowns and four PAT's by quarterback Brian Gladden to win the game 28-6 and possession of the bell for the year. The win completes the season with a 7-2-1 record for Lake Forest.

Senior running back Dale Benson was responsible for two Lake Forest TD's, while his classmate, Billy Scott was good for another. Split end Tony Scott a junior, caught a long Gladden pass for the fourth score.

Spartan fans, visitors in the Buc's stadium, outnumbered hometown supporters by at least 2-1 as they gathered to back the first-time Southern Division champs in the traditional rivalry. Had more Buc fans turned out, they would have seen a better game on Milford's part than they obviously anticipated. Game statistics put the rivals a lot closer together than the 28-6 score would indicate. The Spartans edged out Milford by a relatively narrow margin of 202 yards to 181.

In the first half of the game, the Buc defense held the Spartans to 7 points on a 1 yarder by Dale Benson and the PAT by Gladden. In several instances, Gladden was sacked. And the Lake Forest fumble played a part. When the teams went to the locker rooms at halftime, the score was 7-0 in favor of the Spartans.

Third quarter scoring started early as Billy Scott got loose and streaked down the sidelines for a 41-yard TD. With the extra point, the score climbed to 14-0.

From the Spartan viewpoint, the lone Milford score should not have happened. It came after Lake Forest punter Brian Gladden was backed up almost into his own end zone on back-to-back 15 yard penalties. Gladden's first two

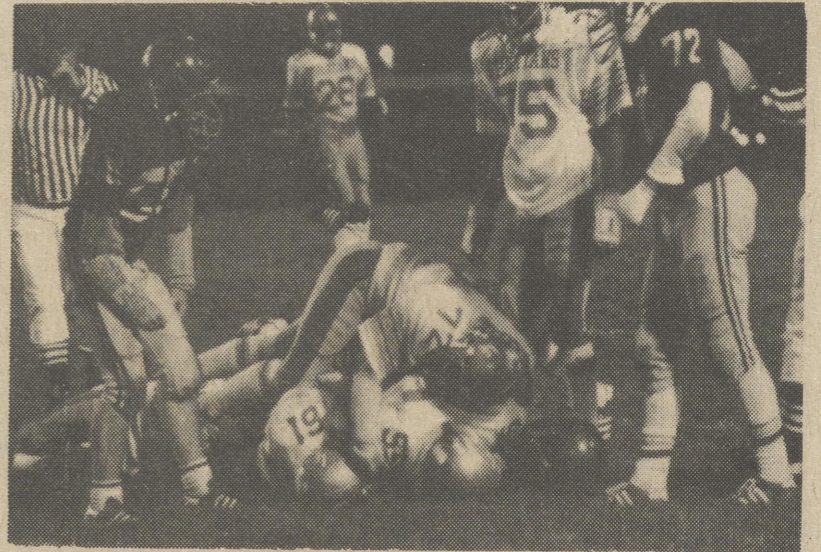
punts had flown high and far down field. However, they were recalled as flags rained down on both plays. But the Buc's Bill Passwaters blocked the third attempt and ran it back the final five yards for six points. The Spartan defense canned the two point conversion, leaving the score at 14-6.

It remained for the final quarter to rack up the Spartans final TD's. Benson was responsible for the first, pushing across from short yardage. Somewhat later, Tony Scott was the target for a 58 yard Gladden pass. He grabbed the ball and raced into the end zone. Gladden supplied the two PAT's and the scoring finished at 28-6.

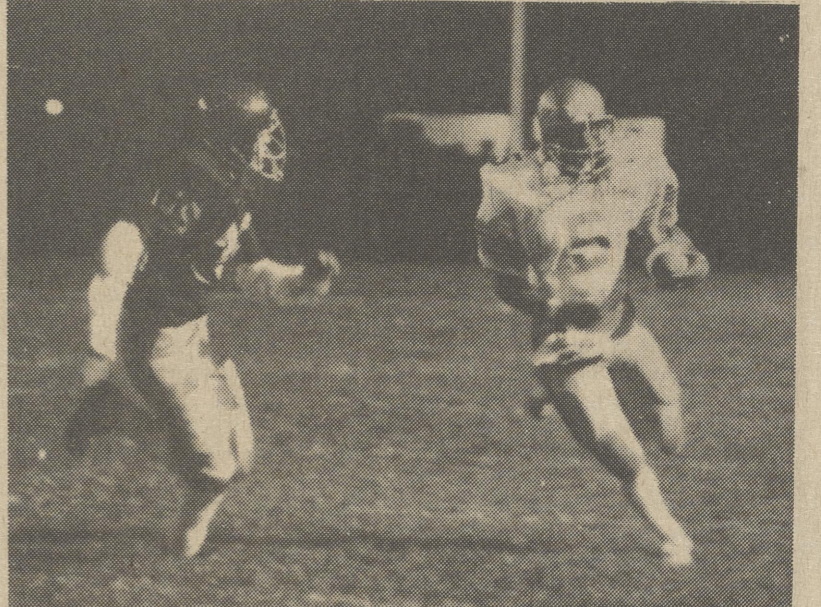
Despite the excitement of the annual rivalry with Milford, the game may have been something of a downer for the Spartans who reached the summit of their finest season last week by beating Smyrna to take the Southern Henlopen Championship. With the win over, Milford (whose record before Friday night was 1-7-1) an expected feat, it may have been difficult to keep their minds off the state tournament. Lake Forest faces Archmere on Spartan turf at 10 a.m. this Saturday. And that will be a whole new ball game requiring every ounce of offensive and defensive concentration the team has to give.

CF Super Bowl set

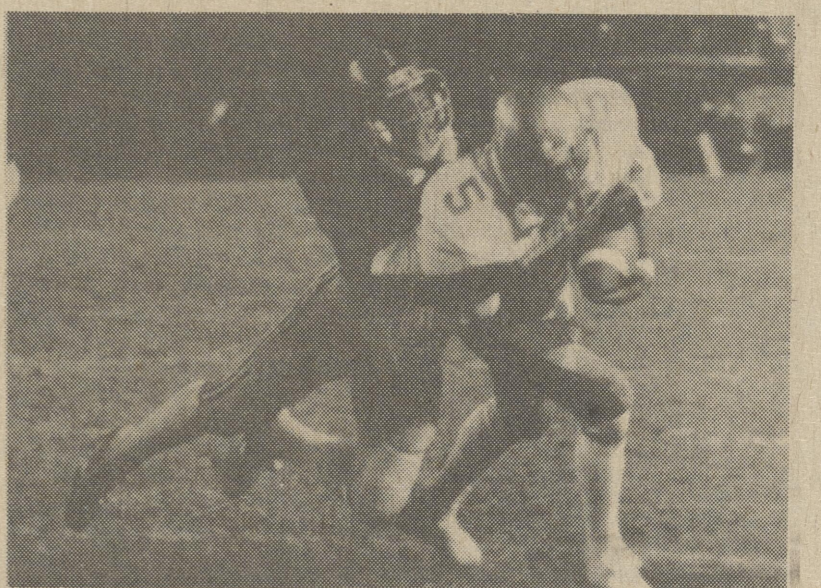
Mrs. Genevieve Evans of Milford and Mrs. Betty Murray of Harrington will coordinate the Super Bowl for Breath IV on Friday, November 27th (the day after Thanksgiving) at Milford Lanes Bowling Center in Milford, Delaware. 122 Bowling Centers throughout Eastern Pennsylvania-Delaware-Southern New Jersey will conduct the Bow-A-Thon. A goal of \$150,000 has been set by the Cystic Fibrosis Foundation.



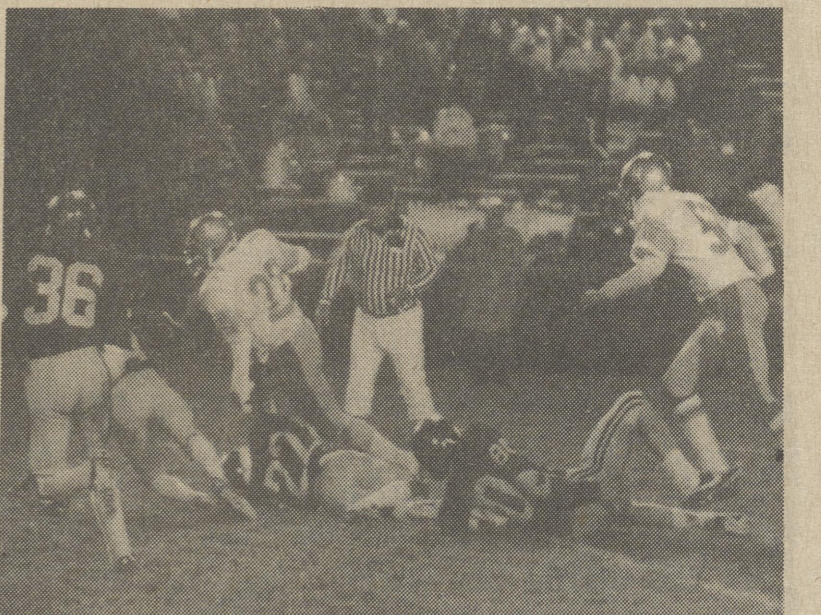
Charlie Hudson 72, Jeff Dickerson, 61, and Hershel Harmon, 55 gang up to crush a Milford ball carrier. Looking on is Rodney Abrams, 75. Gerald "Peanut" Perry 28 is in the background.



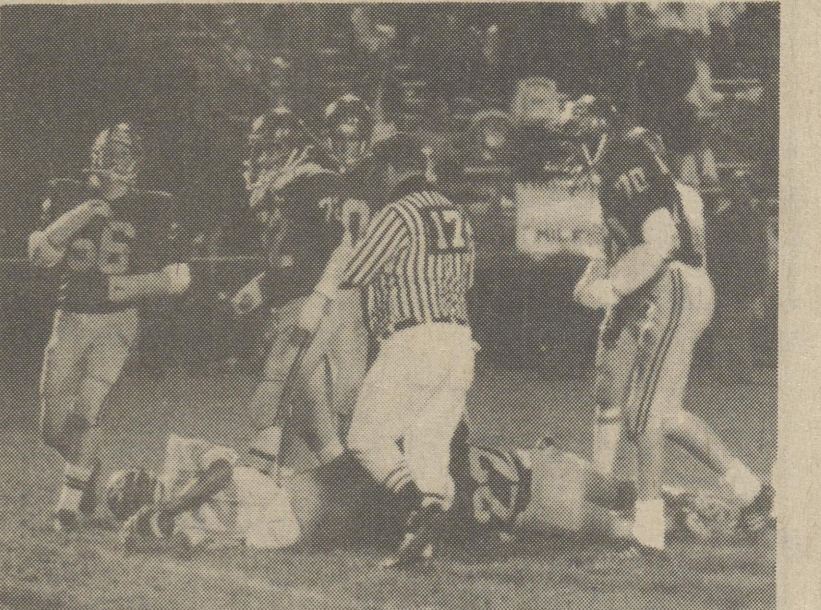
Billy Scott, 5, angles around a Milford defender in the "Battle for the Bell".....



.....but this time Scott does not get away with it. Earlier he ran for a 41-yard TD.



Spartan James Browne (#22-light shirt) is the ball carrier struggling to get away from a chain of Milford tacklers.....



.....Browne manages some advance yardage before being brought to earth.



Quarterback Brian Gladden gets off one of the four successful PAT's that helped Lake Forest beat the Milford Bucs 28-6 on Friday.

Put some extra jingle in your Christmas



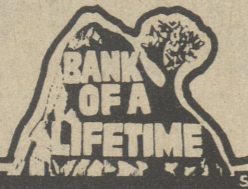
PUT SOME EXTRA JINGLE IN YOUR CHRISTMAS

Next year do what smart Santas do. Open a Christmas Club account with First National Bank of Harrington. Extra cash at Christmas time can make for an extra joyous holiday season. Put away a little each week and you'll be surprised at how much jingle you'll have next year. First National Bank of Harrington will even sweeten your account by making the 50th payment for you. A First National Bank of Harrington Christmas Club account is the best way to make sure you have that extra jingle to do all of those special things for all the special people in your life.

the First National Bank of Harrington
Harrington, Delaware
398-3232

Canterbury 284-3201

Member FDIC



WE'VE EXPANDED

Introducing
McCullough's Wholesale Auto Parts



ALL OVER THE COUNTER SALES AT DISCOUNT PRICES.
FOREIGN AND DOMESTIC PARTS IN STOCK.

ANTI-FREEZE SALE

\$3.99 / gal.

FOUR YEAR BATTERY SALE

24-48	\$39.95	27F-48	\$46.95
24F-48	\$39.95	74-48	\$44.95
22F-48	\$36.95	73-48	\$40.95
27-48	\$46.95		

McCullough's Wholesale Auto Parts • RD 1 Box 242-A • 422-4541
398-4455

SHOP AT THE SALVATION ARMY
THRIFT STORES

CLOTHING FOR MEN WOMEN & CHILDREN

FURNITURE FOR EVERY ROOM IN THE HOME

SMYRNA 14 E. MT. VERNON PH. 653-7095

HARRINGTON 21 COMMERCE ST. PH. 396-8854

WILMINGTON 2117 FRENCH ST. PH. 654-8808

DOVER CAPITOL SHOPPING CENTER SO. DUPONT HWY. PH. 674-5358

THE FIRST NATIONAL BANK of Harrington

wishes all the LAKE FOREST SPARTAN TEAMS Good Luck!

for 1981-1982

Two Locations - Harrington - 398-3232
Canterbury - 284-3201

Member FDIC

STONE'S HOTEL
Harrington, Delaware
398-3434

Stone's Hotel wishes the Lake Forest Spartans GOOD LUCK!!

BROWN'S ACCOUNTING
ELWOOD BROWN
Us. 13 & 14 Harrington

TAXES PREPARED
Corporation
Individual
Payroll Taxes
Accounting
398-4484

Good Luck Spartans!

Chick's

We bring out the west in you.

Rt. 13 Harrington
Across from the fairgrounds
Open 7 days a week
398-4630

HI-GRADE DAIRY, INC.

"Freshly Made Donuts & The Best In Homemade Ice Cream."

"Wishing You GOOD LUCK in All Your Games."

398-3296

CENTRAL GRAIN, INC.
(Formerly Killen Grain Co.)
Ray Brittingham
(Elevator Superintendent)

Bring Your CORN To Us

• TOP PRICES PAID
• STORAGE SPACE AVAILABLE
• DEFERRED PAYMENT PROGRAM

398-3296

ORIENT EXPRESS
Lunch • Dinner • Take-Out

CHINESE RESTAURANT

422-3133 422-3134

Taylor's Hardware Co.
41 Commerce St.
Harrington, DE
398-3291

Good Luck Spartans

BILL'S AUTO SERVICE
U.S. 13
Harrington, DE
398-3700

Wishes Lake Forest Spartans Good Luck in the 1981 Sports Season

GO, SPARTANS !!!

We're 100% behind you as you go to the state tournament.

AETNA SHIRT CORPORATION
Clark St., Harrington
398-8469
We're behind you all the way.

GUS TEAGUE FAMILY
398-8798
Good luck.

HI GRADE DAIRY
Harrington, DE
398-3310
Good luck and go get them boys.

AMERICAN LEGION
C.K.R.T. Post 7-Harrington
398-3655
Good luck and success in the future.

PENNY'S ARCADE
398-3697
Good luck Spartans.

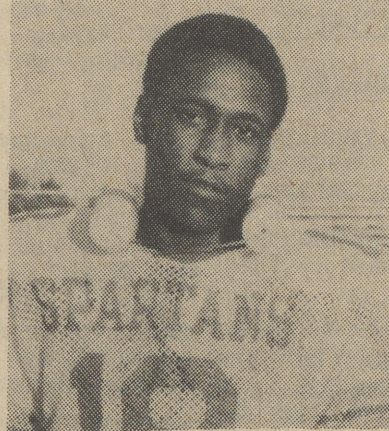
1981
Southern
Henlopen
Champs



JEFF DICKERSON #61
Guard & Linebacker



GUS TEAGUE #52
Guard & Linebacker



LEWIS SCOTT #18
Linebacker



KEVIN SMITH #9
Flanker



TONY SCOTT #81
Split End

1981
Season
Record
7-2-1

CHAMBERS SPORTING GOODS
742 S. Governors Ave., Dover
674-1833
Wishing you success.

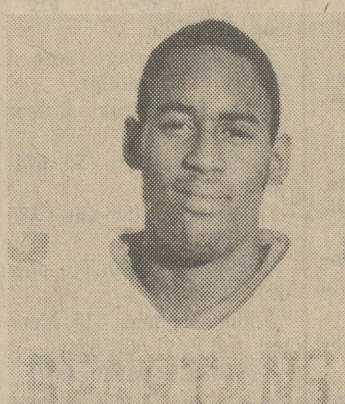
OUTTEN INSURANCE CO.
Harrington, DE
398-3276
Go get them boys.

WOOTEN INSURANCE AGENCY
11 Market St. - Frederica
335-5148
You can do it if you believe in yourselves.

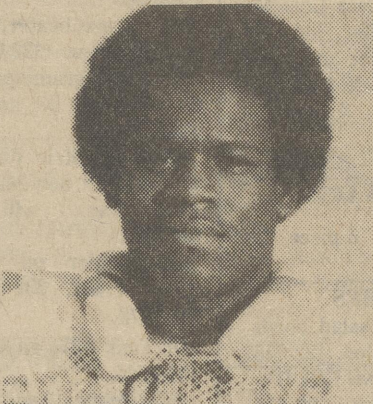
ATLANTIC CONCRETE CO.
Rt. 13-Harrington
398-8920
Hope you have as much success in the future.

DR. SMITH-DENTIST
Commerce St. -Harrington
398-3262
Do your best.

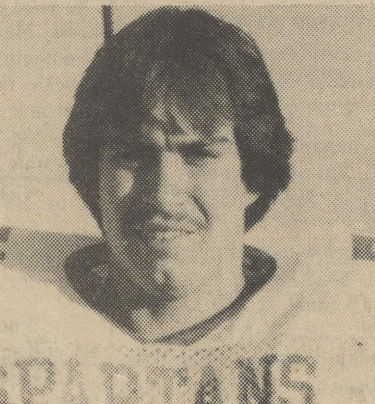
A FRIEND WISHES YOU GOOD LUCK IN THE PLAYOFFS



JEROME SCOTT #82
Flanker



LAMONT ROBINSON #89
Def. End



KENNY RYDER #71
Tackle



LEROY POLK #70
Def. End



DALE BENSON #44
Running Back & Safety



MARVIN DESHIELDS #33
Linebacker & Running Back

WATKINS AUTO SUPPLY CO.
Clark St. -Harrington
398-3422
Hope you have future success.

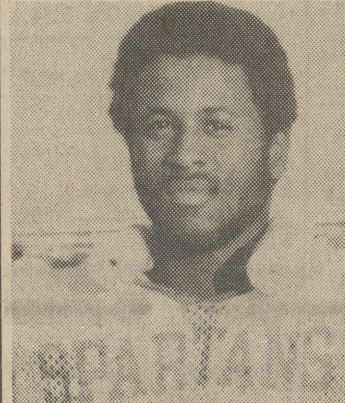
MILFORD SALVAGE CO.
422-4145
Play your best to continue winning.

HARRINGTON FOODRITE
Quillens Shopping Center
398-4398
Just play your best.

RAUGHLEY INSURANCE CO
398-8768
Go, go, go and get them.

PEOPLES BANK
398-3256
Win or lose we're behind you.

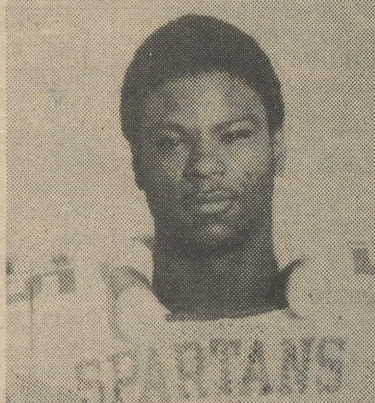
HARRINGTON MOTOR CO.
Rt. 13-Harrington
398-3201
Good luck & continued success.



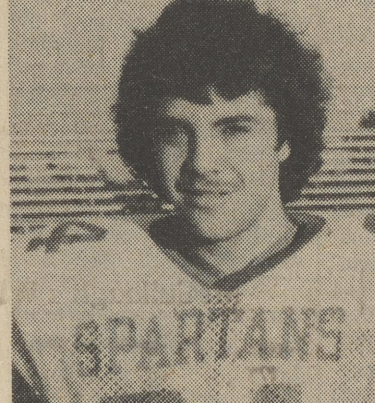
RAYMOND DESHIELDS #32
Linebacker & Running Back



ROBERT STOKES #73
Offensive Tackle



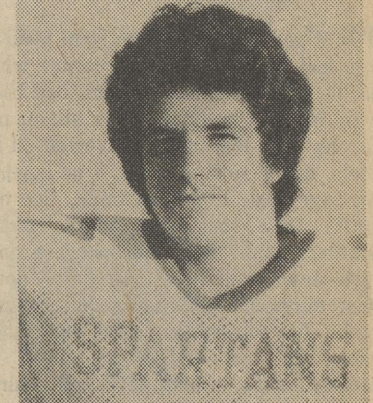
HERSHEL HARMON #55
Center & Def. Tackle



WAYNE GUESFIERD #64
Offensive Guard



FRED COENEN #59
Def. Tackle



BRIAN HUDSON #87
Split End

FIRST NATIONAL BANK OF WYOMING
120 Camden-Wyoming Ave.
Wyoming, DE
697-3241
Wishing you success in the future.

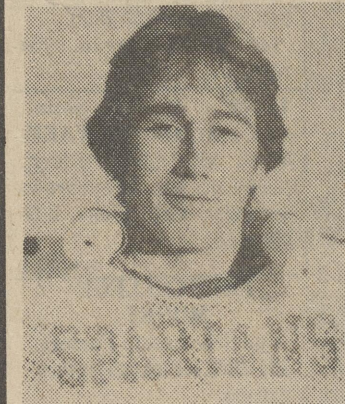
STONES HOTEL
Harrington, DE
398-3434
Wishing continued success to the Spartans.

FELTON BANK
Main St. - Felton
284-4553
Believing in yourself gives you success.

HARRINGTON PLUMBING & HEATING SUPPLY CO.
US 13 & Smith Ave. -Harrington
398-8877
Wishing you good luck in the playoffs.

TAYLORS HARDWARE
Com. & Dorman St. -Harrington
398-3291
We're proud of you and wish you success.

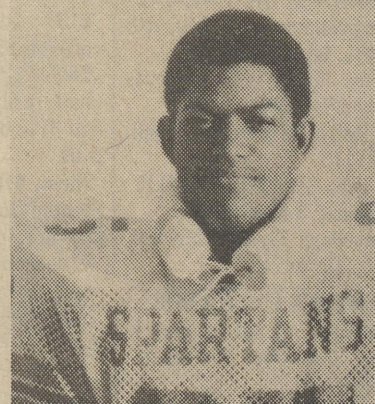
JOHN PICKETT
Concrete Construction
Harrington-Milford Rd.
398-8759
Good luck boys; hope you continue to win.



ERIC DOWLING #60
Offensive Guard



BILLY SCOTT #5
Running Back & Corner Back



RALPH TAYLOR #25
Running Back & Linebacker



JAMES BROWNE #22
Running Back & Corner Back



GERALD PERRY #28
Quarterback & Corner Back



SHELDON POWELL #50
Center & Defensive End

HOUSTON OIL CO.
Houston, DE
422-5104
Good luck and future success.

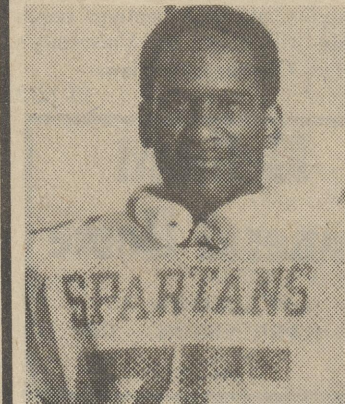
CENTRAL GRAIN INC.
Harrington, DE
398-3296 or 422-4427
Wishing you good luck and continued success.

LOYAL ORDER of the MOOSE
No. 534-Rt. 13N. -Harrington
398-8953
Congratulations to the Lake Forest football team.

LOYAL ORDER of the MOOSE
No. 534-Rt. 13 N. -Harrington
398-8953
Congratulations to the Lake Forest football team.

LOYAL ORDER of the MOOSE
No. 534-Rt. 13 N. -Harrington
398-8953
Congratulations to the Lake Forest football team.

ORIENT EXPRESS
Chinese Restaurant
422-3133 or 3134
Wishing you continued success.



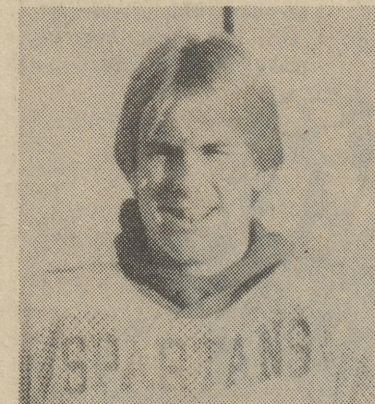
RODNEY ABRAMS #75
Offensive Tackle



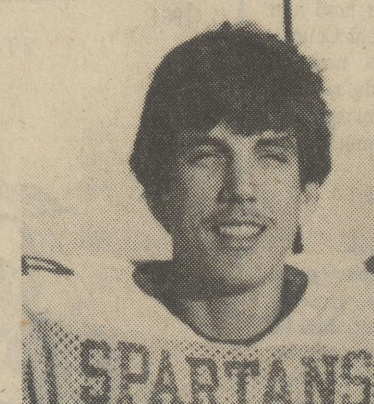
KEITH CHURCH #76
Offensive Tackle



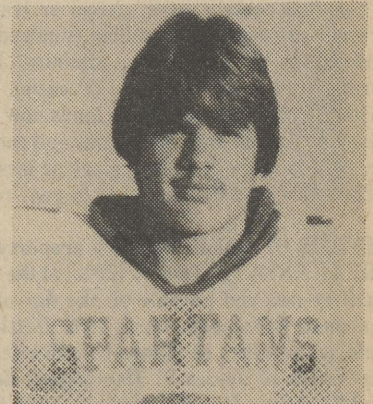
CHARLIE HUDSON #72
Def. End



BRIAN GLADDEN #12
Quarterback & Safety



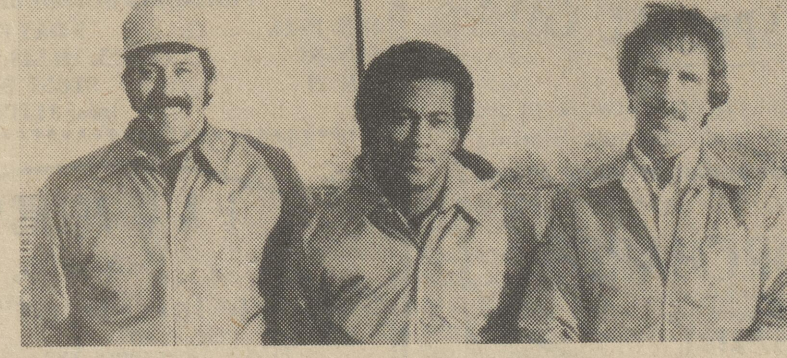
MARTY DAVIS #84
Tight End



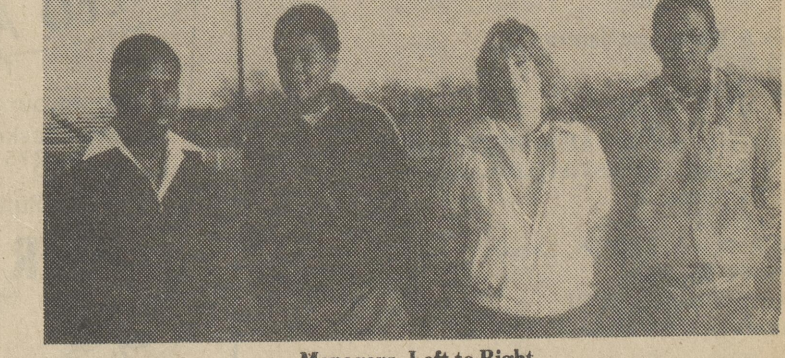
DAVID DECKER #3
Flanker



JV Players Who Accompany Varsity Team
Keith Smith, #24, William Scott, #20, Gary Moore #42, and James Haines, #63



COACHES
Bill Falasco, Chester Scott and Jim Fleming



Managers, Left to Right
Richard Snipes, Amos Lofland, Caryl Horseman and Reggie Davis
Absent from picture are Jill Burgholzer and Stacey Horseman

CLASSIFIED RATES

CLASSIFIED DISPLAY: \$1.90 per col. inch
LEGAL NOTICES: \$2.80 per col. inch
Deadline: Insertion & Cancellation Mon. 12 Noon
Mail to: The Harrington Journal, 19 Commerce St., Harrington, DE 19952
Phone - 398-3206.

\$1.75 for 25 words or less - 5¢ each additional word.

The following ads can run FREE for up to FOUR WEEKS!!

- Household items under \$500
Lost & Found
Employment Wanted
Garage Sales
Giveaways
Items to trade
Yard Sales

Phone - 398-3206

NOTICE

PUBLIC AUCTION

OF REAL ESTATE AND PERSONAL PROPERTY

Pursuant to the Last Will and Testament of James V. Harrington, deceased, and by virtue of the authority vested in the Administrator with the Will annexed by the letters of Administration C.T.A. granted unto him by Sandra W. Dean, Register of Wills in and for Kent County and the State of Delaware, the following described personal property and real estate will be exposed to public sale by way of public auction or vendue on Saturday, December 5, 1981, at the location of the real estate being one mile north of Delaware Rt. #14 on County Rt. 348 near the town of Houston in Kent County and the State of Delaware.

PERSONAL PROPERTY

10 A.M., EST

Contents of several buildings and farm machinery. Including tools, tool boxes, barn scale, wooden barrels and kegs, all sorts of harness, wagon seat, hand truck, 2 fruit cupboards, Model "T" coils, power belt, bushel baskets, lumber, tarpaulin, corn sheller, couch, shutters, horse drawn equipment, box and contents items, new ply board, chains, ladders, lanterns, lg. metal tank, obsolete equipment, Oliver Row Crop tractor, pull type disk, plow packer, salvage M & M combines, salvage M & M tractors, salvage cars, tons of iron, various plows, push cultivator, farm and garden tools of all sorts, approx. 50 bales of hay and straw and many other things.

HOUSEHOLD AND ANTIQUES

App. Noon

Two 3 pc. Oak BR. suites w/hi head boards, maple drop leaf table w/6 chairs, corner what not, brown marble top stand, oak rockers, odd chairs, 2 pc. LR suite, Maple Clermont chunk stove, magazine rack, gate leg drop leaf table, converted oil lamp, baskets, stools, maple sewing table, 4 pc. parlor suite, horse hair love seat, drop leaf table, tier book case, oak library table, oak side board, pictures, frames, painting, comb. desk and bookcase, inlaid open face wash stand, cane seat chairs, dove tail blanket chest, mirrors, fld. hat racks, oak, stands, several nice crocks, flat top trunk, round top trunk, Jenny Lind trunk, dbl. iron bed, cedar chest, treadle sewing machine, comb. school desk and chair, jewel chest, cameras, radios, maple bureau, irons, pcs. of a pitcher and bowl sets, lard press, sausage grinder, separator, Victor talking machine, organ stool, clock dome, mantel clocks, shot pouches, 32 H & R revolver, 12 ga. dbl. barrel hammer gun, 22 rifle, books, linens, 2 drawer file cabinet, Formica top drop leaf table, kitchen cabinet w/glass front, mustache cup, ink well, salts, vases, china, pressed glass, lamp globes, cruets, community plate flatware and many other items.

THIS IS A BROUSER'S SALE
SO PLAN TO COME EARLY & STAY LATE
REAL ESTATE AND AUTOMOBILE

1 P.M. EST
AUTOMOBILE
REAL ESTATE

1955 4 Door Chevrolet - licensed and running.

A farm consisting of approximately eighty (80) acres (zoned A-R) approximately thirty-five (35) acres tillable. There is approximately 1600 feet of frontage on Rt. #384 that would be suitable for building lots. The back part of this farm adjoins Stayton's Sand and Gravel Pit and gives some evidence of being the same soil and being more particularly described in the deed of Mary A. Arnold to James J. Harrington dated April 28, A.D., 1894, and of record in the office of the Recorder of Deeds in and for Kent County, Delaware, in Deed Record Book P, Vol. 7, at page 319. The said James J. Harrington having departed this life, a widow, and intestate on the 15th day of August, A.D. 1928, leaving to survive him, his son and only heir at law, the said James V. Harrington. The aforesaid James J. Harrington and James J. Harrington being one and the same person. The description of the real estate as set forth in the deed and updated in part as to adjoining owners is as follows:

ALL that certain piece, parcel or tract of land and premises situated in Misspillon Hundred, Kent County and State of Delaware, adjoining lands now or formerly of John W. Hall, deceased, lands now or formerly of George McCally, lands now or formerly of Mary A. Arnold and other lands and containing eighty acres of land, be the same more or less.

The house and buildings are in poor repair.

TERMS OF SALE: Personal property--Cash
REAL ESTATE: Twenty (20%) of the purchase price shall be due and payable on the day of sale. Balance due on or before January 5, 1982. Settlement shall be held at the office of Herman C. Brown, Attorney for the estate of James V. Harrington, deceased, State and Reed Sts., Dover, Delaware, on or before January 5, 1982. Subject to 2% Delaware Realty Transfer Tax; 1% to be paid by the Seller and 1% to be paid by the Buyer.

Fox Auction Services
Fox & Willis Auctioneers
422-9743
422-8350

DAVID G. JONES, ADMINISTRATOR
C.T.A., OF THE ESTATE OF James V. Harrington
HERMAN C. BROWN, Esquire
State & Reed Sts.,
Dover, Delaware 19901
Attorney for the Estate

4/t, 12-3

NOTICE

In pursuance of an order of SANDRA W. DEAN, Register of Wills, in and for Kent County, Delaware, dated November 2, A.D. 1981 notice is hereby given of the granting Letters Administration on the estate of Pearl Hickman on the 2nd day of November A.D. 1981. All persons having claims against the said Pearl Hickman are required to exhibit the same to such Administratrix within six months after the date of the granting of such Letters, or abide by the law in that behalf, which provides that such claims against the said estate not so exhibited shall be forever barred.

SANDRA W. DEAN
Register of Wills
Attorney For Estate:
Joyce H. Porter, Administratrix of the Estate of Pearl Hickman, deceased
3/T-11-25

NOTICE

In pursuance of an order of SANDRA W. DEAN, Register of Wills, in and for Kent County, Delaware, dated November 5, A.D. 1981 notice is hereby given of the granting Letters Testamentary on the estate of Frank L. Beauchamp on the 5th day of November A.D. 1981. All persons having claims against the said Frank L. Beauchamp are required to exhibit the same to such Executors within six months after the date of the granting of such Letters, or abide by the law in that behalf, which provides that such claims against the said estate not so exhibited shall be forever barred.

SANDRA W. DEAN
Register of Wills
Attorney For Estate:
Clarence F. Beauchamp and Preston L. Beauchamp, Executors of the Estate of Frank L. Beauchamp, deceased.
3/T-11-25

HELP WANTED

1 Wrestling Cheerleading Coach at Woodbridge High School. Coaching experience desirable. Apply to: Dr. Robert C. Sutton, Asst. Superintendent, Woodbridge School District, 307 Laws St., Bridgeville, DE 19933 EOE. Deadline for applications - 11/30. 2/T-11/25

Position open for licensed qualified real estate sales person. Good opportunity for right person. Call Farrow Realty, 398-3455. TFN

Advertising Representative Needed. Salary plus commission. Benefits. Good hours. Good working conditions. Need resume & references. Call Anne at the Harrington Journal. 302-398-3206. TFN

Information on ALASKAN and OVERSEAS jobs. \$20,000 to \$50,000 per year possible. Call 602-941-8014 Dept. 7713. 4/T-12-2

SECRETARIAL POSITION - Due to business growth, a new full time position will be open starting January 4, 1982, in the insurance division of Marvel Agency. Typing, Telephone, filing and some bookkeeping skills required. Insurance experience helpful, but not necessary. All applications will be kept confidential. Mail resume to Marvel Agency, P.O. Box 358, Milford, Del., 19963. Deadline Dec. 1, 1981. 2/T, 11-25

NEED A SPECIAL GIFT?
Come see our display of one or two layer gift boxes or baskets of fruits and nuts. Starting as low as \$3.75. Also available: Candy, Honey and Apple Butter! Order now for the holidays!
FIFER ORCHARDS
TURN WEST AT GRANT STREET
1/2 mile west of Wyoming
697-2141
OPEN Monday - Saturday 8 till 5 Closed Sunday

1 Assistant Basketball Coach at Woodbridge High School. Playing experience desirable. Apply to: Dr. Robert C. Sutton, Asst. Superintendent, Woodbridge School District, 307 Laws St., Bridgeville, DE 19933 EOE. Deadline for applications - 11/30. 2/T 11/25

FOR SALE

APPLIANCES

DRYERS - \$95 Gas Penncrest/green, 678-9197, \$75, (trade) Maytag, 734-3804.

PORTABLE WHIRLPOOL DRYER - Almost new, \$100. 398-3767. 4/T, 12-9.

REFRIGERATORS - \$15 398-8794 or 398-4607. GE, Like New, \$300, Almond, 678-9197. Side x side, 492-8200.

REFRIGERATOR - Hot Point, green, \$55. 674-3551 or 734-5171.

STOVE - Kenmore E \$65 335-5030.

STOVE - Kenmore, ceramic, like new, \$400. 284-9722.

STOVES - Tappan Gas w/rotisserie 697-7468. \$100, 30" gas range/copper-tone, 422-0244. \$30, Apt. size, white GC 422-0244.

WASHING MACHINES - \$50 Kenmore/white, 422-0244.

WASHING MACHINE - \$80, Kenmore/White, 674-3551 or 734-5171.

WASHING MACHINE - \$85, reconditioned, Guaranteed - Green, 674-0509.

BIKES - IMCADO - dual purpose minibike with automatic clutch in like new condition 734-4177.

IVERSON - New 1980 24" touring lightweight 734-4177 734-5634 evenings. \$75.00.

PEGASUS - Antique Bicycle - fully restored to factory condition. 734-4177 734-5634.

BOYS - Bike \$10. 653-4898.

GIRL'S - \$30 each, 2 bikes, 20" hi-rise in good condition. 422-0244.

GIRL'S - 26" (Russell) bike w/reflectors \$15. 734-1025.

BOATS - \$375 - fiberglass duck boat 12 ft. w/trailer, good 734-7977. \$150 - yellow canoe - 734-7966. 12 foot w/trailer and extra motor - 734-7272.

16 Ft. Thompson Boat - 40 hp Evinrude motor w/2 trailers & motors. Sell or trade. 349-4196.

BOAT STORAGE - 422-9297. \$10 - \$25 monthly.

BUILDING MATERIALS - Tearing down Harrington house. 674-4564.

CAMERAS AND EQUIPMENT - \$20 Polaroid 1-step LN 422-2557. \$500 Quasar Videorecorder 674-4370.

SPY CAMERA - Minox \$75 Like new. 734-1112.

TELEPHOTO LENSE - for 35 MM camera - Rocknank 400 mm. 6. 3-22 w/tripod connection and case only \$150. \$80, 35 mm Kodak w/case, 697-7119.

\$3 - 8 mm movie camera (needs work) 492-3583. \$8 polaroid sq. shooter. 492-3583.

\$25 - polaroid 1-step new, 492-3583. Quasar Video Recorder, excellent. 674-4370 (4-4-30).

ASI film Strip Projector, make offer. 284-9769.

FOR SALE

CAMPING EQUIPMENT SLEEPING BAG - \$10, 653-4998. TENT - \$15 - 422-6099.

VAN BUILTINS - Ice box, jump seat (2) bench-type seats and chest, all \$100. 734-7077.

CARS - 1964 Chrysler - \$400 GC 284-4379 or trade for pickup truck. \$1250 - '73 Fiat - 124 Sports Coupe, 4 psgn, new paint, tagged 697-2828. '79 Camaro t-top (white) 734-8625 \$5,450. '66 and '65 Mustang collectibles, 284-3913.

SURPLUS JEEP - value \$3094. Sold for \$33. Call 602-941-8014 Ext. 7713 for information on buying. 4/T 12-2

PONTIAC FIREBIRD - 1969, \$600 or best offer, must sell. 734-7272.

FORD TORINO, \$350 or best offer, 1971, 697-7346.

HONDA CIVIC - 1981, 4,000 miles, make offer, 674-8551.

CADDY ELDORADO - '72, \$250. 734-7272.

CAR PARTS - Chrome Exhaust Pipes, \$40 both 422-4054.

CB'S - 40-channel - realistic, 398-8252, \$75 or best offer. Base & Mobile, \$125, 734-7977.

3 Cobra w/power mike 422-2471, \$150 for all. 23-Channel, 2 \$50 at 422-2471.

Walkie Talkie CB, \$50, 284-9760.

Sears Road Talker, 40-Channel \$50, 697-6621.

Cobra, 2000 GTL, Single side band, \$450, base comes with ground plane antenna, mast, coax cable and power mike. \$125 - Base (Royce) 284-9772.

Trade Lafayette CB - 492-8351 (Base station)

CHILDREN'S CORNER - \$15 Swing set - 674-4357. \$20 Ping Pong Table - 674-4357.

BOOKS - Childcraft set of 15 \$40 like new, 674-1977. Assorted crib sheets and blankets 335-3175.

High Chair - excellent \$10, 422-2557. Winnie-the-Poo Swing 422-2557 new \$15.

\$7 - 30 baby items - 335-3175. \$40 - Baby crib and mattress, 734-2386.

Free - Playtex baby nurseries (bottles) 734-7272. Baby bed with mattress - 734-7272, \$10.

Ping Pong Table - \$20, 674-4357. Boy's Bike, 653-4898, \$10.

Books, Childcraft (15) volumes Great, 674-1977, \$40. Umbrella Stroller, \$10, crib sheets, 50 cents each.

Crib Blankets, 25 cents each, 653-4898. \$7 - Baby swings, \$7 each, 653-7115.

Travel Bed, \$10, 653-7115. Carseat, \$4, 653-7115. American Flyer Train Set, \$100, 422-2471.

CLOTHES EXCHANGE - Children's - 2 pair toddler's shoes 5 & 5 1/2, \$10 each. 284-9769.

12 mos. - 6 yrs. 678-9489 Shoes 2 & 3 - 335-5990 Clothes 3, 4, & 5. 335-5990 Baby clothes, 335-3175, \$7. \$1.50, little girls pants size 5-8 \$1.50 each, like new 422-2557.

ADULTS - Nursing uniforms size 22 1/2 734-5042 \$50 for all. 9 1/2 motorcycle boots 734-5538. \$40 - Alligator shoes & bag, size 10, 697-2849.

DAWSON BUS SERVICE INC. TOURS 302-697-6342

DEC. 12 ROADSIDE AMERICA & CHRISTMAS VILLAGE LONGWOOD GARDENS

DEC. 13 3 LITTLE BAKERS "HERE'S LOVE"

DEC. 27 & JAN. 2 DISNEY ON ICE PHILADELPHIA SPECTRUM

JAN. 3 "ANNIE" PHILADELPHIA SHUBERT THEATRE

JAN. 16-24 9-DAY FLORIDA TRIP

JAN. 30 MEL TILLIS, PITMAN, N.J.

JAN. 31 STONE BARN DINNER (near 3 LITTLE BAKERS)

L & W AGENCY Insurance

"Complete Insurance Protection"

1154 S. Governors Ave. Dover 674-3500 - 856-7828

FOR SALE

CHRISTMAS GOODIES - Tree, 6 ft. balsam - 2 boxes ornaments \$25, 422-6099. Artificial tree - \$10, 734-2378 or 734-9906.

6 foot balsam w/2 boxes ornaments 422-6799. Ornaments 25 cents up 734-3254.

COLLECTIBLES - Arrowhead collection, 736-1880. Avon Chess Set, full, 734-4819, \$75. 8 cups & saucers, Blue Willow, \$25. Mexican & Glass Figures, 348-8252. American Flyer Train Set, \$100, 422-2471. Charlie Weaver Doll, \$30, 697-1375. Farm Bell, make offer, 734-9450. Wooden Wine Barrels, 613-1730, make offer.

Antique Farm Tools, \$8 each. 678-1730. Antique Carriage Seat - Make offer, 678-1730. Antique bicycle - 734-4177. Make Offer.

40-year old Coca Cola Machine. Make offer. 734-4177. Souvenir plates and knickknacks - make offer 422-6099. Ceramic cat & carnival glass 398-3871. Ceramic Owl - 398-3871.

COOKWARE - Cookware - 5-piece like new 697-7858.

DISHES - \$5 - Wooden salad bowls - set of 8 small, too. 422-2557.

EXERCISING EQUIP - Exercycle, \$10, 492-8951. \$75 398-8263, \$75 - 110 weight set, 378-8859.

FISHING POLE \$5, 653-4898

POOL - Fresh broccoli and brussel sprout - Tuthill Farm - on N. Bowers Beach Road. To order call 335-5011.

FURNISHINGS - \$150, bar (Spanish type) 736-6703. \$400 - Bedroom suite, girl's white double canopy bed, double dresser w/mirror - one night stand. 734-7341. \$300 (both) 2 Broyhill love seats - blue and gold floral pattern 734-0142. \$15 (both) (2) dining room chairs, padded seats, 422-0244. \$15 - large credenza like coffee table (long) 734-9374. \$60 - Sofa w/matching chair (gray w/black stripes 335-3175 between 10 a.m. - 8 p.m. Chest, \$10, 653-4898. Dining Room Suit w/hutch, Trussells, oblong, pine dark w/deacon's bench, 4 ladder back chairs, Early Am. Tung & Groove table, handmade, \$700, 734-8845. Double Contour Seat, excellent Cond. 697-9833, \$200 \$15 - Matching step end tables (dark wood), 335-3175 \$10 - Phone desk w/chair (med. brown wood), 335-3175. \$5 - Night stand (light brown wood), 335-3175. Make Offer - Miscellaneous shelving, white, 335-3175. \$125 - 2-pc. living room, modern brocade gold, 3 cushions, matching chair, 739-3679.

WOOD BURNING STOVES and fireplaces. Six different models. Fire burns slowly like charcoal, up to 16 hours. Guaranteed best price. Gray Electronics, 422-9558 (day or evening) 2/10 mile north of Misspillon Drawbridge, Milford.

HOUSING FOR SALE - 3 Bedroom home, Kitchen DR together w/bar, ranch sits on 1/2 acre, right at the very entrance of the Country Club, Mella, Va., near Aca-mac, 2 1/2 hours from Dover, never been lived in. Electric heat being installed. 1 bath, Tile (formica tile) \$30,000. Owner will take back a second. Will work out a good financing deal with some body. Retirement area, \$1200 a year to join the club. In a \$100,000 neighborhood. 284-3108.

NEW ARRIVAL! 24'x22', 2 bedroom 1 3/4 bath, family room, \$22,760.00. Village Garden Homes, Inc. Rt. 13, Bridgeville. Hours 10-6, Monday thru Saturday (302) 337-7613. 4/T, 12-2

NEW ARRIVAL 14' x 56', 2 bedroom, \$10,995.00 Village Garden Homes, Inc. Rt. 13, Bridgeville Hours 10-6, Monday thru Saturday (302) 337-7613. 4/T, 12-2

NEW ARRIVAL - 14'x70' 3 bedroom, 2 baths, \$13,595. Village Garden Homes, Inc. Rt. 13, Bridgeville. Hours 10-6, Monday thru Saturday (302) 337-7613. 4/T, 12-2

FOR RENT HOMES FOR RENT - Two large rooms for the elderly in a family care rest home. For more information call 422-6384.

2 Bedroom, \$160, see fast, it'll be gone soon at this price!, Smyrna, 734-7272.

FURNISHINGS - Marsh Rocker, Antique \$75 734-7119. \$150 - 2 end tables, coffee table matches, rustic handmade cedar, made from logs, 734-7977.

GAMES - \$75 - Cosmic Pinball game, 284-9844. Computer games to play - 734-1112.

GLASSWARE - \$15 - 24 piece Libby glassware and 8 matching sher-bets 335-3175.

GUNS & HUNTING EQUIP - \$375 for all - 16 gage double barreil Parker, 16 gage pump shotgun, Winchester Rifle - 1890-22 calib. & 2 single barreil shotguns. 422-2471. Kodiak Hunter Bear Bow - 422-0244, \$50. Trade or Sell - German luger for .410 double barreil shotgun. Has Harrington 410 single barreil, too. 734-3804.

HEATING & COOLING SUPPLIES - Firescreen - \$15, nice, 697-6187. \$60 - 275 gallon oil drum, 422-0244. \$65 - space heater, perfection, like new - 422-0244. \$85 - Monogram space heater w/blower like new, 422-0244. \$150 - Electric furnace - 35,000 BTU, new. 422-0244. Attic Fan - w/ll trade, 734-3804. \$45 Siegler oil heating stove w/fan, 398-8794 or 734-7272. Oil Tank - 275 gallon - new 734-7344. J.C. Penney heat exchanger w/blower 697-6187, \$50. Firescreen \$15. (same).

WOOD BURNING STOVES and fireplaces. Six different models. Fire burns slowly like charcoal, up to 16 hours. Guaranteed best price. Gray Electronics, 422-9558 (day or evening) 2/10 mile north of Misspillon Drawbridge, Milford.

HOUSING FOR SALE - 3 Bedroom home, Kitchen DR together w/bar, ranch sits on 1/2 acre, right at the very entrance of the Country Club, Mella, Va., near Aca-mac, 2 1/2 hours from Dover, never been lived in. Electric heat being installed. 1 bath, Tile (formica tile) \$30,000. Owner will take back a second. Will work out a good financing deal with some body. Retirement area, \$1200 a year to join the club. In a \$100,000 neighborhood. 284-3108.

NEW ARRIVAL! 24'x22', 2 bedroom 1 3/4 bath, family room, \$22,760.00. Village Garden Homes, Inc. Rt. 13, Bridgeville. Hours 10-6, Monday thru Saturday (302) 337-7613. 4/T, 12-2

NEW ARRIVAL 14' x 56', 2 bedroom, \$10,995.00 Village Garden Homes, Inc. Rt. 13, Bridgeville Hours 10-6, Monday thru Saturday (302) 337-7613. 4/T, 12-2

NEW ARRIVAL - 14'x70' 3 bedroom, 2 baths, \$13,595. Village Garden Homes, Inc. Rt. 13, Bridgeville. Hours 10-6, Monday thru Saturday (302) 337-7613. 4/T, 12-2

FOR RENT HOMES FOR RENT - Two large rooms for the elderly in a family care rest home. For more information call 422-6384.

2 Bedroom, \$160, see fast, it'll be gone soon at this price!, Smyrna, 734-7272.

HORSE & SUPPLIES - Homemade Horsetrailer - \$500 single axle, 422-9297.

HOUSING TO SHARE - 31-acre site in Maryland - \$150 month (301) 438-3791 or 734-7972.

JEWELRY - Wedding set 7 diamonds, 6-8 years old, \$250. 14-Kt. - 3-diamond ring, PERFECT for Christmas gift. \$300, 734-7272.

LAMPS - \$5 Eagle Lamp w/glass globe 422-2557. \$100 - (2) matching black and brushed Stiffel Lamps w/marble base - 736-6458.

LINENS - Lords Prayer Bedspread, \$50, 734-8919. Bedspread, \$15, Dubarry, 284-9760. \$125 - Kingsize bedspread w/matching drapes, fastastic buy - 736-6458. Sheets - \$5 for all (7), 335-3175.

MISCELLANEOUS - \$100 - Stainless steel sink, 678-1730. Fiberglass set/tub - 678-1730. Wooden wine barrels - 678-1730. Kitchen Magician - \$10 - new 678-1730.

PET EXCHANGE
\$25 German Shepard male pup \$25, 335-4985.
\$60 Chocolate lab (1 year all shots) 734-3066.

FOSTER CARE needed for two family dogs - 734-4411.

TELEVISIONS
\$10 - Needs work (tv/b&w) 734-9906.

TIRES
2 - 14" snow tires like new (Plymouth rims) 734-7272, \$24 each.

TOOLS
Masonry tools, \$75 or best offer, 734-3254.

TRUCKS
57 Ford pickup, 60 Inc. new tires, hurst shifter, good condition, \$600 or will trade for a motorcycle, 653-4342.

FOR SALE
\$600 - 57 Ford pickup will trade for motorcycle. Hurst Shifter - good 653-4342.

TRUCK PARTS
\$75 - 350 Chevy truck engine, 422-2471.

VACUUMS
Industrial Craftsman - 697-3247.

VEGETABLES
Fresh broccoli and brussel sprouts. Tuthill Farm -- 2 miles on N. Bowers Beach Road. To order call 335-4583 or 335-5011.

WOOD STOVES
WOOD STOVE - \$150.00 697-7672 or 734-7272.

SERVICES
Poultry Growers Insurance coverage, including collapse, competitive rates for buildings, equipment, and all farm insurance. MARVEL AGENCY, Insurance, Milford, Del. 422-9626.

WEIGHTS
110 lbs. set w/deluxe bench, \$75, 378-8859.

WOOD STOVES
WOOD STOVE - \$150.00 697-7672 or 734-7272.

SERVICES
Poultry Growers Insurance coverage, including collapse, competitive rates for buildings, equipment, and all farm insurance. MARVEL AGENCY, Insurance, Milford, Del. 422-9626.

WEIGHTS
110 lbs. set w/deluxe bench, \$75, 378-8859.

WOOD STOVES
WOOD STOVE - \$150.00 697-7672 or 734-7272.

SERVICES
Poultry Growers Insurance coverage, including collapse, competitive rates for buildings, equipment, and all farm insurance. MARVEL AGENCY, Insurance, Milford, Del. 422-9626.

We'll Advertise your give-away pets FREE until placed. 734-7272, any time.

Computer tutor - Renew skills or learn new ones, 734-1112.

Videotaping and photos taken, 734-4411, cheap and fast.

Furniture Repair & Restoration - Rusy Hinge Antiques - 734-7977.

Boat Storage - 422-9297 - \$10 outside, \$20 and \$25 inside.

Mr. & Mrs. Santa Claus - Will call your child and find out what they want for Christmas and then call you and save surprises on Christmas morning. 734-3254.

Mission Refuge: Will pick-up your items. Call 24-hours any time: 734-2378. Thrift Store located in Dover next to Trailways bus station

Harrison Paving Contractors: Call for estimate - 734-1494.

Stewart Home Safety - Call for demonstration, 736-0381.

Nalbone's Housecleaning Service: 697-7119. Call for rates.

Aleta Howell's Character Analysis - 335-3175. Call for interview.

Housekeeper - two days (Monday and Tuesday), 678-3275.

Computer Tutor - Learn new skills or improve old ones - 734-1112.

Typing - anytime - 734-1112

24-Hour-On-Call Notary 734-4411.

Copywriting/Editing for term papers 734-4411.

24-Hour Telephone Answering - 734-1112.

Wake-Up Service for you sleepy heads - 734-1112.

Small Appliance Repair - 734-4411.

Free College Money (no military required) - Call THE SCHOLARSHIP FINDERS at 734-2378 NOW!

NEED ADVICE? - Ask Angela - 734-7272.

Need help with your Advertising Budget? - we can help - call The Best Ad Agency in Town - 734-4411.

Message Delivery (anywhere/anytime by phone) - Whatever's legal...we'll say and how you want it said. 734-1112.

Word Processing - 1-day mail service 734-4411.

FREE HARRINGTON JOURNAL - Call Angela Darr at 734-7272 and she'll send you one!

Mail Forwarding - anywhere or we'll hold until you get back (if you plan to come back) 734-4411.

Want a special something drawn by a professional artist? Call 734-4411 for your dream come true!

Bookkeeping Service - Call 734-4411.

NEED ADVICE? - ASK ANGELA, CALL 734-4411

EMPLOYMENT WANTED
Intelligent-dedicated young man with good references needs daytime job. Call 734-1112 and make an offer.

Social Worker wants full time, call 734-7272 and ask for #1.

Experienced cleaning lady would like temporary regular customers. \$20 per day. In Harrington, Milford, Felton area. Hours - 10-3, call 398-3035.

Carpenter - small and big jobs 697-7119.

Housekeeping - 8-4, \$35 per day 697-7119.

Housekeeper - 9-3 Monday & Tuesday, \$25, 678-3275.

Will drive your car anywhere - 734-7272. Call now for rates: Also will arrange for shipping.

Jobs available (jobs needing people).

Telephone sales - 734-4411.

Part-time Handiman - 734-4177.

Advertising Sales - 398-3206.

Volunteers needed - 674-2486.

Volunteers needed - 674-4357.

Internships - 734-4411.

Will do alterations and sewing, 398-3513.

Fair Exchanges
German Luger copy - Erma & Lazz & Harrington & Richmond .410 Single Barrel/Topper model TRADE FOR: .410 Winchester Pump Double Barrel Shotgun 734-3804.

ATTIC FAN-Will cool 5 room house for whatever 734-3804.

USED DRYER (good condition) for whatever 734-3804.

1957 Ford Pickup w/60" new tires and hurst shifter. Good condition - 1600 or will trade for motorcycle 653-4342.

MOTORCYCLE - \$65 (needs work) will trade for a cord of wood, 674-4559.

EUREKA upright vacuum TRADE for tank type vacuum. 736-1880.

WILL GARDEN for a share of the crops - 674-3785.

LAFAYETTE CB base station/TRADE FOR: 8x10 chain-link dog kennel or AKC Doberman pup or 75 bags of sacrete cement mix. 492-8951.

21' side by side refrigerator for apartment size 492-8208.

UTILITY TRAILER for 8' wide mobile home - 736-6649

WANTED TO BUY
WANT SOMETHING? CALL 734-7272, any time to list.

WANTED - Rug or carpet, 734-7272.

WANTED - Telephone sales person, 734-1112.

WANTED ITEMS
White toy poodle, \$50, 734-7272.

Used typewriter, 335-3505.

Need cash for Christmas. We pay the highest possible prices for class rings, gold jewelry, sterling and silver coins. First State Coin Co. Call for quotes. 734-7776. 6T, 12-23

WANTED ITEMS
APPLIANCES-Washer & dryer 697-3115.

Apartment size REFRIGERATOR 492-8208.

ELECTRIC STOVE-734-5011.

WAFFLE IRON-674-9245.

BOATS - 16 foot 674-5068

BUILDING MATERIALS - 75 bags sacrete concrete mix 492-8951.

CAMERA-35 mm - good brand - 734-7272.

CARS - used 349-4033 - under \$500 422-2296 under \$800 678-3924; Older mustangs & Fords 284-4082.

Reasonably priced car for teenage son - 284-4437.

TRIUMPH SPITFIRE - 674-9426.

CHILDREN'S CLOTHES - 335-4417 (baby) 674-9245 (baby) 678-9868 (baby).

CHILDREN'S FURNISINGS - Rocking horse 335-4417 - Record players: 697-3459, 697-6809, 734-0113.

Furnishings 674-9245, Porta crib - 492-3723, Baby things - 678-9868.

WOMEN'S CLOTHES - Large & Long sizes - Good clothing only - 734-7272.

MENS BOOTS - size 9 1/2 734-4411.

COLLECTIBLES
1980 Delaware Hunting Licenses 734-5014.

Piano Rolls will pay \$2 each, 674-3785.

Curio china cabinet - 697-6184.

Blue Willow China pieces - 697-7725.

COMMUNICATIONS
Mobile phone - Mr. Thompson 736-0337.

Beepers/pagers (used) 734-4411.

Decorator phones (used) 734-4411.

PA system (portable) 734-3254/734-4411.

DISHES
Blue Willow pattern (English) 734-7272.

EXERCISING EQUIP
Exercycle - 492-8071.

FREE DISCARDS
Reusable & fixable items 734-2378 any time - Will pick up and give tax credit. Mission Refuge.

FURNISINGS
Heavy duty sewing machine - 653-7561.

Living room sofa & chair - 674-1555.

Round table for church conference room with matching dining room suit 284-3108.

Curio China Cabinet - 697-6184.

Chest of drawers - 653-4898

GLASSWARE
Crystal - reasonable - 734-4411.

GUNS & HUNTING EQUIPMENT
410 double barrel shotgun - 734-3804.

HEATING & COOLING SUPPLIES
Cord of wood - 674-4559.

HOUSING TO SHARE
678-6136

HOUSING TO RENT
3-4 BR house near Kent General, 674-5564.

3-BR house - 653-9506.

5-BR executive home, 734-7272.

MOBILEHOMER HOUSING
8' mobile home - 736-6649

Lot to buy for trailer placement 734-4411.

LAMPS
Cheap lamps for office - 734-4411.

MOTORCYCLE
653-4342 MOTORCYCLE MUSICAL INSTRUMENTS AND STEREOS
Old piano rolls - 674-3785

PET EXCHANGE
Rabbit dogs - 335-5930

TELEVISIONS
Color TV (except RCA) 398-3071.

TRUCKS
Pickup truck - 284-4379.

TRUCKS & TRACTOR PARTS
235 engine - 684-8427.

Tractor Tire - 11x24 - 335-5746.

235 engine 697-7023.

235/250 engine 674-3071.

65 Chevy engine 492-3136 or 734-6517.

Old Mustangs or Ford to buy 284-4082.

Van Mirrors - 284-4070 678-6681.

Truck engines - 398-8180.

Used Cars - 349-4033.

Van Customized - up to \$2500. 398-4260.

Typing Equipment
Used typewriter - 335-3175

Used typesetter - 734-4411.

VACUUM
Cannister type vacuum 736-1880.

ATTENTION CHRISTMAS SHOPPERS
Indoor Flea Market Saturday, Nov. 28th Delaware State Fairgrounds Track Dining Room

PROPOSED AMENDMENT TO Police Ordinance passed May 11, 1981 by Council of City of Harrington

SCIENCE IN OUR LIVES
NEW ANSWER TO AN OLD PROBLEM
There is fresh evidence to show that nothing succeeds like success.

CELEBRATE Thanksgiving
Image of a turkey and stylized text.

CITY OF HARRINGTON BUDGET FISCAL YEAR 1981-1982 Accepted October 12, 1981
Estimated Revenues
Estimated Expenditures
Pie charts showing REVENUES and DISBURSEMENTS.

Table with columns: NAME, CITY AD., POL. DEPT., LIBRARY, ALD. COURT, STREETS, TRASH, WATER, SEWER, TOTALS. Lists various city departments and their budget allocations.

Plan Holiday Menus around our
Thanksgiving Savings



<p>Quillen's Pork Sausage 1.29 lb. 1.39 lb. Loose Stuffed</p> 	<p>U.S.D.A. Choice Chuck Roast</p> 	<p>Esskay's "Early-Joy" sliced bacon 1 lb. Vac-Pac 1.19</p> 
<p>Blade End Roasts 1.59 lb.</p>	<p>Boneless 1.99 lb.</p>	<p>Crosscut Roasts— Boneless 2.29 lb.</p>
<p>Fresh Ground Chuck 1.99 lb. 5 lbs. or more 1.89 lb.</p> 	<p>Extra Lean Beef Cubes 2.29 lb.</p>	<p>Esskay's "Old Fashion" Loaf or Provolone Cheese 2.29 lb.</p> <p>Esskay's Braunschweiger (Liver Sausage) 8 oz. Pkg. 69¢</p>
<p>Folgers Flaked Coffee 13 oz. Can 1.79</p> 	<p>B 'n B Sliced Mushrooms 3 oz. Can 69¢</p>	<p>Ocean Spray Cranberry Sauce 16 oz. Can 59¢</p>  <p>Birds Eye Fordhook Limas 10 oz. Pkg. 59¢</p>
<p>Hallwood Syrup - Pack Sweet Potatoes 40 oz. Can 1.19</p>	<p>Kraft Marshmallow Creme 2-7oz. Jars 1.00</p>	<p>Sunshine Vienna Finger Sandwich Cookies 14 oz. Pkg. 79¢</p> 
<p>Fritos Corn Chips 3/4 lb. Bag (Reg. 1.59) Special 1.29</p> 	<p>Barnetts Pure Ground Black Pepper 4 oz. Can 79¢</p>	<p>Green Giant "Corn Nibblers" Corn on the Cob 6 Pack 99¢</p> 
<p>Cadillac Dog Food (Beef or Chicken) 3-14 oz. Cans 1.00</p>	<p>Kraft's Parkay Oleomargarine 1/4's - 2-16 oz. Pkg. 1.00</p>	<p>New Crop Florida Oranges 100 Size 6 for 69¢ Doz. for 1.29</p> 
<p>Armours Potted Meat 3 oz. Can 4 for 1.00</p> 	<p>Armours Vienna Sausage 5 oz. Can 2 for 1.00</p> 	<p>Crisp Green Celery Lge. Bunch 59¢</p> 
<p>Dairy Market Country Enriched White Bread 20 oz. loaf 59¢</p> 	<p>Dial Soap (Reg. Size) 4 Bar Bundle 99¢</p> 	<p>Closed Thanksgiving Day</p>

Quillen's Dairy Market

We reserve the right to limit quantities.

For your shopping convenience, we are open every day of the year!

11/26-27-28

Phone 398-8768

DORMAN STREET
HARRINGTON, DE.