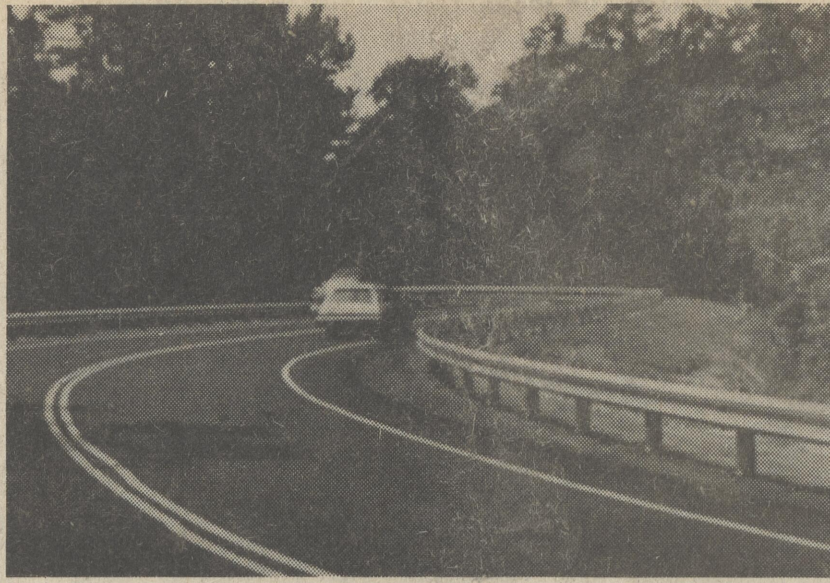




BEFORE --- This curve on the Andrews Lake Road was deemed a safety hazard until-----



AFTER ---- Del DOT did some work.

### DOT finishes Andrews Lake project

Del DOT recently completed a project aimed at improving travel and safety conditions on Andrews Lake Road. "Modifications were made to the existing alignment, the roadway was widened, and upgraded guardrail was placed," said Kermit H. Justice, Secretary of Transportation. During the development stages of this project, three alternate concepts were considered for the Andrews Lake project. The optimal design would have completely realigned the road and removed its curves. Four foot shoulders would also have been added. Another solution considered using Road 383 as a through route to Route 12. It too would have required some realignment of the Andrews Lake Road.

Due to limited funds, the entire roadway could not be reconstructed. Emphasis was placed on using the existing facility and increasing its safety potential. The end result is a wider road with newly constructed shoulders and galvanized steel beam guardrail. "Concern for the safety condition of Andrews Lake Road was a high priority," explained Justice, "particularly because of school bus traffic. However, the improvement had to be made realistically with available funds." The most viable concept for the repair work is now in place. Certainly the improvements will make the roadway safer for bus routes and motorists' use.

# The Harrington Journal

10749264HOABD 1  
HOAG & SONS BOOK BINDERY, INC  
127 RR AVE  
SPRINGPORT MI 49284

Sixty-Seventh Year, No. 8, August 18, 1982

Published Every Wednesday at Harrington, Delaware

Twenty-Five Cents Per Copy

## L.F. school board approves \$8 million budget

The Lake Forest Board of Education Monday night gave its tentative approval to a budget totaling \$8,646,064. However, the largest part of that total figure is \$4,527,800 in state appropriated salaries and employment costs. For that reason, final budget approval will await September 30 when the unit count (the number of teachers the district can hire based on the number of students enrolled) is complete for the 1982-83 school year. Also included in the overall figure are \$1,559,549 in other areas in which the district has no choice but to allocate the funds in a specific way. These include: **Debt Service:** State share (60%) - \$296,900. Local share (40%) \$95,833, in expected tax revenue plus \$357,076, balance brought forward. This money can only be used to reduce the district's indebtedness; **Minor Capital Improvements:** State share (60%) \$60,572., Local share (40%) \$25,064. in tax revenue plus a \$33,464. balance - Again these are tax funds allocated for specific projects which cannot be used elsewhere. Among the others over which the district exercises little or no discretion are \$148,501 in state money and

\$416,993 in federal money for special programs such as gifted and talented, basic skills and Title I. **-Discretionary Budget-** With the figures for state salaries and other specifically limited areas deducted from the grand total, the district is left with a budget of \$2,558,715 in anticipated revenues offset by \$2,558,715 in proposed expenditures - a balanced budget as District Superintendent Dr. Edward Powell points out. The total discretionary budget represents a \$179,765 increase over last year's \$2,378,950 - This year's figure has been divided among the following regular programs. **Estimated Costs Regular Programs**  
Lake Forest High School . . . \$ 73,530  
Athletics . . . . . 57,885  
W.T. Chipman Junior School . . . . . 36,000  
North Elementary . . . . . 30,000  
East Elementary . . . . . 14,000  
South Elementary (A&B) . . . . . 20,250  
Curriculum Development . . . . . 59,234  
District . . . . . 1,443,196  
Administration . . . . . 14,329  
Buildings & Grounds . . . . . 82,330  
Transportation . . . . . 677,326

Aquatics . . . . . 15,560  
Contingency . . . . . 35,075  
TOTAL . . . . . \$2,558,715  
Included in the \$1,443,196 set aside for the district are \$872,655 representing the local supplement to state paid salaries plus locally paid employee benefits and \$447,810 for utilities and fuels. **-Unit Count**  
Dr. Powell reported that the expected unit count so far is 171 with 169 teachers actually on board. That number is slightly down from the 173 previously anticipated. **-Personnel Hired-**  
The board on Monday night hired Bruce Peris (vocational shop, high school), William Shupe (high school alternative program crisis counselor), John Reiher (high school alternative program teacher-coordinator), Barbara Fitzpatrick (instructional resource center manager), Anthony Spitale (psy-  
[Continued on page 8]

**BACK TO SCHOOL**  
Look for the Journal's special back to school supplement free inside.

## Lake Forest High school will have swim team

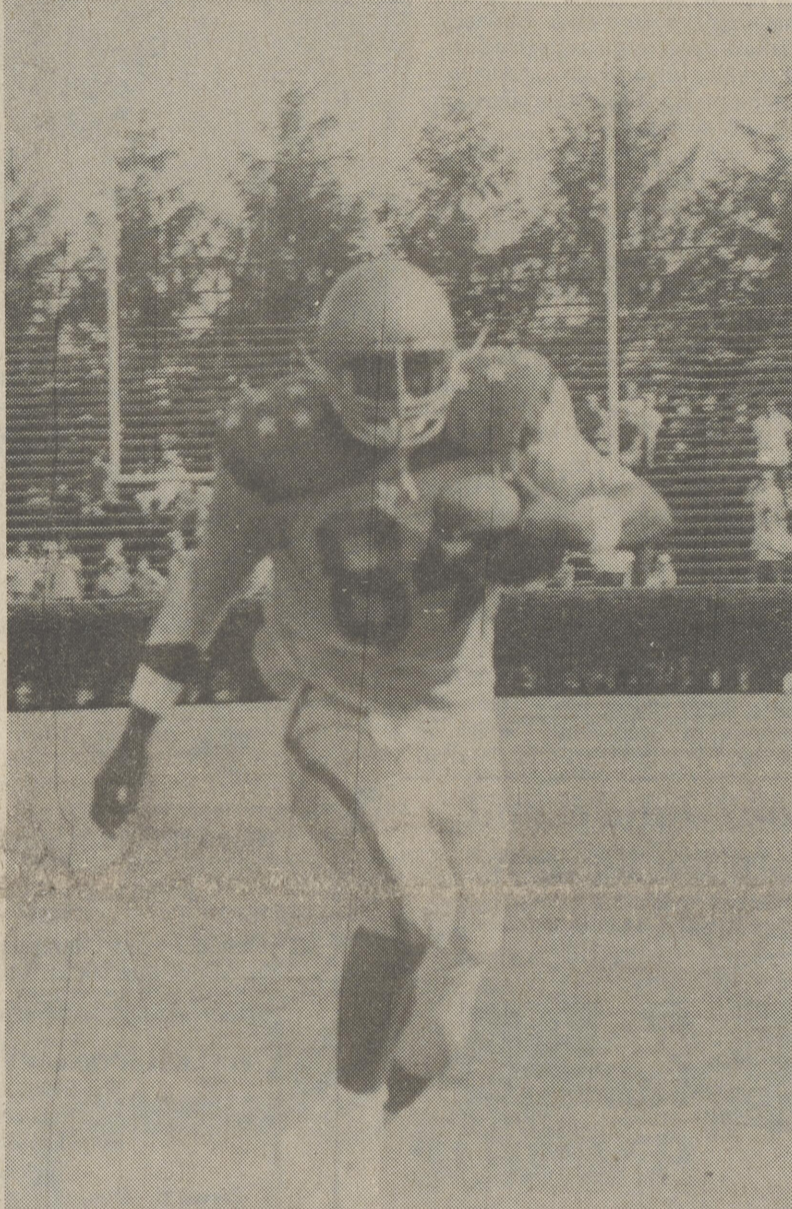
Lake Forest High School will have a competitive swim team for the 1982-83 school year. The creation of the team got the unanimous approval of the Lake Forest Board of Education on Monday night. The team is expected to be comprised of 30 members (15 boys and 15 girls) who will swim during a winter season (November through March). Cost of starting the team according to Student Activities Director Dave Adams, is about \$2,000. That money will be shifted from the aquatic budget into the athletic budget. While the Lake Forest Community Aquatics program has fielded teams over the past two years, these have been drawn from the entire community including elementary students and swimmers from outside the Lake Forest area. The team created by the board Monday night will represent Lake Forest High School in competition against other high schools just as the football, basketball, cross country and other teams do. A coach for the team has not as yet been named.

The following fall coaching assignments have been approved. **Football -** Varsity: Head coach - Jim Fleming; assistants - Bill Falasco and Chester Scott; Freshman Football: Tom Shaffer; Chipman Football: Steve Vansant and Mike Smith. **Soccer -** Dave Buck **Hockey -** Varsity: Pat Dyal; JV: Bonnie Simon; Chipman: Juanita Melling. **Cross Country -** High School: Jim Blades; Chipman: Baxter Smith. **Cheerleading -** Soccer: Doris Moffett; Football: Sheryl Shulties Ford.

## North gets guidance pilot project

Lake Forest North Elementary in Felton is the recipient of one of three pilot projects creating a guidance program at the elementary level. The other two sites selected by the state's Department of Public Instruction will be in New Castle and Sussex Counties. Lake Forest North was chosen as the Kent County recipient. The project will bring about \$23,333 in state funds to hire a counselor and set up a program at the Felton school. This is seen as a definite plus by district officials. Since North Elementary this year will house all the sixth

grade students from both North and East Elementary in Frederica, the timing of the pilot project should prove especially valuable for the district. Depending upon the success of the pilots and the availability of the funds, the state could decide to institute elementary guidance programs elsewhere in the future. The project at North has been designated Project S.E.L.F. (Self Esteem at Lake Forest) and will be designed to serve the staff members and approximately 600 students in regular classrooms.



All Star excitement was provided by Dale Benson in the Blue/Gold game in Newark on Saturday. Dale took a bombshell pass from Sussex Central's Rodney Workman and took off for the goal line. Before he was hauled down on the one, he had completed an 88 yard pass play that shattered a 27 year old record set in the very first Blue/Gold game in 1956 [For the story on Benson, Kevin Smith, Billy Scott, Gus Teague, LaMont Robinson and the All Star results, see page 7].

## Historical Society signs lease with Conrail

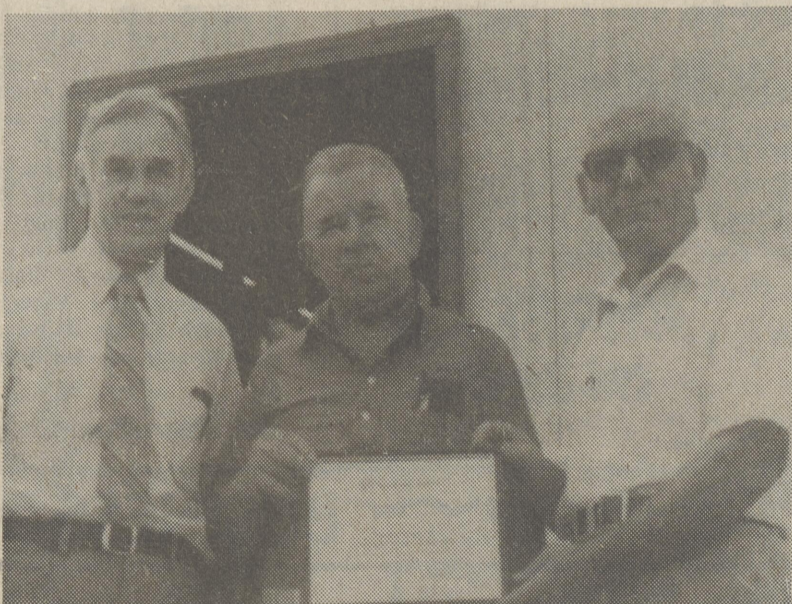
The Greater Harrington Historical Society and Conrail officials last Wednesday agreed on the terms of a lease granting the society the use of the block house signal tower. The agreement guarantees the building, which had been scheduled for demolition, will be preserved for the use as a museum of the town's railroading past for at least the next five years. When the Board of Directors and Conrail officials sat down last week to work out the lease agreement, the railroad company set the rent on the building and a rectangle of surrounding property at \$1 per year. Then the company waived the rent. The offer, accepted by the Historical Society, represents a big decrease from the \$125 per year first proposed. Along with the building, the lease gives the society a 34' 6" x 80' rectangle of property extending from a few feet north of the block house south along the west side of the tracks. This property the society must enclose with a 6 foot chain link fence. The cost of the fence and the maintenance of the building along with all taxes will be the responsibility of the society. The taxes the society hopes to have waived. The area included in the lease was considerably larger than the society had anticipated. That means more fencing and a cost of approximately \$1000 instead of the \$150 previously calculated. However, it is still expected to be a one time expense. Conrail further agreed to let the Society post a sign pointing to the block house museum near the Clark Street railroad crossing. Before the society takes possession of the building on September 1, it will have to show proof of the appropriate levels of insurance coverage designated by Conrail. Plans are now underway for the keys to the building to be formally turned over to the Historical Society in special ceremonies on Harrington's Fourth Annual Heritage Day on September 18. (Watch *The Harrington Journal* for details). The society plans to turn the historic building into a museum. On its third floor there is a vertical blackboard showing the layout of the tracks in the Harrington switching area. When it was in use, tiny bulbs similar to those used in flashlights would light up to show the movement of the trains and the operation of the switches. Nyle "Soupy" Callaway, Jr., a Harrington area railroad man who has expressed great interest in the project, thinks that it can be put back in action. He has  
[Continued on Page 8]

## Trumpet soloist Sauer to appear

Barbara Sauer, trumpet soloist, will appear on Tuesday, August 31 at the Harrington Public Library, 10:30 a.m. - 12:30 p.m. and the Dover Public Library from 2 - 4 p.m. The Delaware State Arts Council and the Delaware Division of Libraries, Department of Community Affairs are co-sponsoring this free program to provide children an opportunity to learn about brass instruments, meet a professional musician, and try a few toots for themselves. Children and parents should contact the libraries for further information.

## Chipman holds Open House

Open House at W.T. Chipman Junior School for new students and their parents will be held from 9 a.m. to 4 p.m. on Thursday, August 26. School personnel will be available to answer questions and it is hoped that this preview will eliminate any anxiety students may feel about entering a new school.



Southern States Regional Supervisor Les Pryor, left, recently presented Charles and Tom Peck of Harrington, plaques honoring their 35 years of service as private dealers for Southern States.

## Bullock, Winkler elected / Charles and Tom Peck honored

Donald Bullock of Harrington and David Winkler of Felton were elected to the local Peck Bros. Farm Supply Advisory Board at the Southern States Annual Membership meeting held in Harrington on August 5. Over 154 stockholder-members and their families attended the session. **Special Presentation Honors 35 Years of Service**  
In a special presentation made by Les Pryor, Southern States Regional Supervisor, Charles and Tom Peck of Harrington were honored with the presentation of individual plaques. Each plaque read "This is to certify that Charles/Thomas Peck has completed 35 years of service to farmers as a Private Dealer for Southern States Cooperative, in testimony whereof, this certificate is awarded the first day of July, 1982." The plaques bore the signatures of Harris K. Sewann, Vice President for Retail Sales, and Gene A. James, Executive Vice President and General Manager of Southern States. The Harrington dealership for Southern States was started in 1937 by Charles L. Peck, Sr. It was then known as Charles L. Peck and Son. In 1946 under the ownership of Tom Peck and Charles Peck, Jr., it became Peck Brothers Farm Supply Company. Early this year, the brothers turned the business over to new owner and manager, Roger Hudson of Seaford. **-Others Appointed-**  
In other business at the annual membership meeting, Ernest Vogl of Harrington was named chairman of the local board, while David Hrupsa of Felton was selected as vice-chairman. Elected to the local Southern States  
[Continued on Page 8]



**NEW CRAFT ADDED FOR HERITAGE DAY -** Janice Martine (left) and Sally Bowman will bring their spinning wheels to the crafts display area when Harrington celebrates its fourth annual Heritage Day on September 18. Both ladies who are members of the Thistledown Fibers Guild which meets at the ag museum near Dover will be delighted to demonstrate their craft and talk about the two opposite reasons for their becoming involved in spinning. Meet them on Heritage Day. [Meanwhile keep watching the pages of the Journal for continuing information about Heritage Day.]

# Delaware Electric Co-op will elect five directors tonight

The Delaware Electric Cooperative will meet tonight, August 18, at the Lake Forest High School to elect five persons to its eleven member board of directors. The election will be staged as a part of the 46th annual membership meeting.

Five incumbents have filed for reelection to the board of directors. Of

these, four face opponents and the fifth may be challenged from the floor the night of the election.

The candidates listed so far include: **District Three:** William J. Wells of Harrington. Wells, who is the board's current president, has not thus far been challenged.

**District Four:** Incumbent - O. Joseph Penul of Milford; Challenger - Wayne L. Hill of Milford.

**District Six:** Incumbent - Roland Mumford of Seaford, current vice president of the Coop's board of directors; Challenger - Charles C. Allen, Jr. of Seaford.

**District Nine:** Incumbent - Albert H. Lank of Milton; Challenger - Herbert B. Smith of Milton.

**At Large** - Incumbent: Betty J.

Beason of Milton, Challengers - Henry C. Johnson of Selbyville and George R. Harrison of Leisure Point near Millsboro.

The meeting will begin at 7 p.m. Those Coop members who wish to vote but who cannot attend the evening meeting may register and cast their ballots beginning at 4 p.m. at Lake Forest High School.

## Coming Events

**THROUGH AUGUST 30** - The Delaware State Arts Council presents "Sculpture and Other Scientifically-Inspired Art" by Stewart Dickson, in Gallery 1 on the mezzanine level of the Carvel State Building. The exhibition includes light-manipulating sculptures, computer drawings, and musical instruments which range from a very traditional Japanese Koto to unique, contemporary electroacoustic monochords and an aluminophone. Located at 9th and French Streets in Wilmington, the gallery is open Monday to Friday from 8 a.m. to 4:30 p.m.

**CONTINUING EDUCATION BULLETIN AVAILABLE** - The University of Delaware Fall 1982 Continuing Education Bulletin is now available and features a variety of credit, professional and personal development courses and programs for lifelong learners. The free, indexed catalog may be picked up at Public libraries throughout the state; at the university's Wildcastle Center, 2800 Pennsylvania Ave., Wilmington; and at Clayton Hall on the north campus in Newark.

**TONIGHT FREE CONCERT** - In the mood for some good top 40 and variety numbers? Stop by Killens Pond State Park tonight, August 18, to listen to a free concert given by "Generation Gap" between 7 and 8:15 p.m. The six-member band comes from such Sussex County areas as Seaford, Laurel, Bethany Beach and Millsboro and features a female vocalist.

The Delaware Division of Parks & Recreation invites you to come by and unwind in the middle of the week by listening to "Generation Gap's" music. And don't forget - it's free!

**AUGUST 18-20** - An all-day fishing trip on the Delaware Bay will be featured in a short course on sportfishing, scheduled Wednesday through Friday, Aug. 18-20 at the University of Delaware's Virden Center in Lewes.

Cosponsored by the university's Division of Continuing Education and the Sea Grant Marine Advisory Program, the course is designed for both novice and experienced anglers. Major emphasis will be on sea trout fishing in the Delaware Bay, and local fishing areas and species also will be discussed.

The course is designed to improve fishing skills and provide greater understanding of weakfish as an important fishery resource. Workshop sessions will present specific fishing techniques, care and preparation of the catch, basic bottom rigs for Delaware Bay angling, and surf fishing methods. A special presentation highlighting fishing tips and technology will be featured.

Speakers will include Howard Seymour, marine advisory specialist at the university; Ted Miller, outdoor editor for the Delaware State News and Maryland State News; Doris Hicks, seafood information specialist in the university's Sea Grant Program; Lloyd "Hoss" Cochran, president of the Delaware Mobile Surf Fishermen Association; McKain, a husband-and-wife photojournalism team specializing in travel and saltwater fishing publications; and Robert Cassidy, a longtime angler in the Delaware Bay who specializes in servicing the Delaware Bay angler relative to the rigs needed for fishing this area.

Cost of the course is \$125. Enrollment is limited. Overnight accommodations

are available at the Virden Center at an additional charge.

For more information on the course, contact Nick Biasotto in the Division of Continuing Education in Newark, telephone 738-1171, or Andy Manus at the College of Marine Studies in Lewes, telephone 645-4252. For information on overnight accommodations, contact Bill Croal at the Virden Center in Lewes, telephone 645-4100.

**AUGUST 21** - The Milford Historical Society will host a Cocktail Party in the Garden of the home of Mr. and Mrs. Sudler Lofland, 210 South Walnut St. (Next to the Library) on Saturday August 21st from 4 to 6 p.m. Rain Date August 28th.

**AUGUST 21** - Super Saturday at Slaughter Beach. All day, August 21, 1982. (\$2.75 all you can eat). Breakfast, 6:30 to 9:30. Children's games, train ride, fire truck ride, police helicopter, "Dunk the Clown", surf casting contest, music by Jimmy Emberlain and Friend, Senior Citizens Band, "anything goes" Wild Country, square dancers, plenty of food. Sponsored by the Memorial Fire Company and Ladies Auxiliary of Slaughter Beach.

**AUGUST 22** - Kent County Levy Court thru the Parks and Recreation Department, will sponsor a Children's Dog Show on Sunday, August 22 at Tidbury Creek Park. In case of rain, the show will be held on Sunday, August 29, at the Park. All youngsters from four to 14 may enter their dogs, more than six months old, in the contest, regardless of breed, special training or whether the pet is pedigreed.

Children, along with their dogs, should be at the Park at 1:30 p.m. to complete the necessary entry forms. Judging will begin at 2 p.m. Dogs will be judged in several classes, plus a Best of Show Winner. Judging classifications are: Best trick dog, smallest dog, largest dog, best looking, best costumed, funniest and best behaved. First, second and third prize ribbons will be awarded to winners in each category, with a Best of Show to be selected from among first place winners.

The Children's Dog Show is being sponsored jointly as a public service by the National Recreation and Parks Association, Ken-L-Ration and Kent County Parks and Recreation.

For further information, please call the Parks and Recreation Office at 736-2090.

# Goldey Beacom opens new Business Skills Training Pavilion

Goldey Beacom College officially opened its new, \$1.25 million Business Skills Training Pavilion, Monday, August 16. The new pavilion will house a Learning Resource Center, Word Processing and Computer Science Laboratories. The three story wing which is attached to the Clarence A. Fulmer Center, seats 500 students in eight classrooms.

Beginning in 1978 when the College raised \$672,100 from its alumni, staff and friends, the Business Skills Training Pavilion has been 100 percent

funded by private and public sources. Major contributors include the Cope-land-Andelot Foundation, the Crestlea Foundation, Crystal Trust, Delmarva Power & Light Company, Gannett Foundation, George I. Alden Trust, William Randolph Hearst Foundation, Hercules, Inc., Laffey-McHugh Foundation, Longwood Foundation, Marmot Foundation, and Welfare Foundation. Also, over 100 individuals and businesses have supported the campaign. On August 23, 1982, the College received its single largest grant of

\$580,900 from the Economic Development Administration of the United States Department of Commerce, making it the first EDA grant awarded to a private institution in a decade.

With Senators Joseph R. Biden and William V. Roth, Representative Tom Evans, and Vernon J. Menard, Chairman of the former New Castle County Economic Development Committee, arguing the cost effectiveness of Gol-

dey Beacom College in the economic development of northern Delaware, Malcolm Baldrige, the Secretary of the Department of Commerce, placed the project on the national priority list.

With this expansion of the College's facilities and programs, the College looks forward to continuing up-to-date education to prepare students for the new electronic and computerized business scene.

## Fillmore announces for Senate

John H. Fillmore has announced that he is the Republican candidate for the State Senate for the 16th Senatorial District. Fillmore is a former Police Chief of Felton from 1969-1975, and then served as a Justice of the Kent County Justice of the Peace Court until 1981.

Announcing that he will seek election to the Senate, Fillmore said:

"My goal is to be an accessible and responsive Senator for all the people of the 16th District. We will run an energetic campaign to meet the people of the 16th Senatorial District, to hear their concerns, and to earn their

confidence. Meeting the needs and representing the interests of the people of the 16th District will be my first priority as a legislator."

"My priorities also include continuing Delaware's progress in achieving financial stability, creating jobs, and improving the quality of education offered in our public schools."

John and his wife Lois live at 24 Voshell Mill Road and have resided in Kent County for 30 years. They have four children, John, Lynn, Michael and Colleen, all of whom are graduates of the Caesar Rodney School District.

## Block house

[continued from page 1]

volunteered his expertise. Among those present at last Wednesday's meeting were members of the Historical Society Board of Directors; Project committee members Grace Welch and Buck Cahall, Al Arnett, Conrail's Assistant Vice President for Governmental Affairs; Edward Melchior of Conrail's division of real estate in King of Prussia, PA.; Ray Gagne, representing the Harrington City Council; and Dan Griffith, chief of the

state's Bureau of Archeology and Historic Preservation. The last named promised the cooperation of the state, in the efforts to preserve the building and refurbish it as a museum.

Also present at the meeting by special invitation were Nyle Callaway and Donald Cain. It was Cain who first brought Conrail's plans to demolish the block house to the attention of the Harrington Historical Society.

The Society has announced that it welcomes all donations of materials, time, talent and/or funds. Interested persons can call Grace Welch at 398-3635 or Ken McKnatt at 398-8354.



It's probably the sun and not the score that makes Nikki Scott frown. This picture was taken before the Blue/Gold All Star game. Nikki was on hand to see her all star uncle, Billy Scott, play. The young lady from Harrington is an all star herself as she makes a recovery from a February operation designed to even the length of her two legs. She had an operation similar to one featured on the TV show *That's Incredible*. Nikki, who wears the external metal skeleton that is helping her to heal, got a sideline seat at the game.

## ...at the Fairgrounds

**August 21** - Milford Little League Awards Dinner, Club House.

**August 21-22** - Appaloosa Show, Show Ring.

**September 7** - Boar Sale, sponsored by the University of Delaware Extension Service; 6:30 p.m. near the swine buildings.

**September 8 - November 13** - Harrington Raceway, Fall harness meet.

## TOO LATE TO CLASSIFY FOR SALE

Freezer for sale. One year old. Asking \$150.00. 2T 8-25

## PUBLIC AUCTION OF VALUABLE REAL ESTATE

Saturday, August 28, 1982 at 10:00 a.m. Located at 262 Delaware Ave. Harrington, DE

**Parcel #1** - Bungalow in excellent condition on large lot, large one car garage, black top drive. All kitchen appliances in very good condition, nice neighborhood. Located on state maintained street in Harrington.

**Parcel #2** - Land, 18 acres more or less, with no improvements located on Rt. #35, Harrington-FredERICA Rd. near Harrington city limits. Ideal property for horse farm or development. Zoned agriculture.

Both parcels will be sold at 262 Delaware Ave. For inspection or information, please call for appointment, 398-3605 398-3763, 398-8749 or 398-8823.

**TERMS:** 20% down day of sale and final settlement within 60 days of date of sale. The percentage paid on the day of sale will be treated as part of the purchase price if terms of the sale are complied with, otherwise it will be forfeited for non-compliance and treated as liquidated damages.

Buyer to pay cost of deed and Delaware transfer tax will be divided equally. Sellers reserve the right to accept or reject all bids. Possession will be given at time of final settlement.

Estate of Louise L. Minner  
Executrix John L. Minner  
Executrix Emily Rothermel  
Auctioneer John Hastings

3T, 8-25

**Structuring your future and the future of your community!**

With a solid community base and the professional banking "know-how", we've the brick and mortar and "do it all" ability to help build a better community for all and a constructive, solidly secure financial future for each of our customers.

Whether we're helping a citizens' group save a decaying neighborhood, making a young couple's dream come true, or teaming with business to create new community jobs, we can structure your future and the future of your community.

Come in today and consult with one of our banking experts for a blueprint to your financial security.

**The Peoples Bank of Harrington**  
"The Friendly Bank"

Clark-Hanley St. 398-3256 Member FDIC

**RESTAURANT** 9-15

**Orient Express**

LUNCH • DINNER • TAKE-OUT

530 Bay Rd., Dover 674-8410

**ADVERTISE**  
398-3206

## BUSINESS DIRECTORY

<b>CLEANERS</b> 9-2 Let Capitol Cleaners & Launderers, Inc. Help you get your clothes ready for school. Fur & Wool storage. Four locations & Free pick up & delivery. 674-0500 DOVER, DE	<b>HOME SALES</b> 8-18 HIGH POINT HOME SALES, INC. For Over 20 Years THE BEST IN THE STATE FOR LESS. All types of Manufactured Housing. 200 S. DAFER RD. 113 and 113A	<b>MUSIC</b> TF CONN SELMER LUTWIG CARLE SCHNER WURLITZER CURRIER Hours: Mon-Thurs 9-6, Fri 9-9, Sat 9-5. 205 S. Dual Highway Camden, Delaware 19934 Phone: 302-697-2155	<b>AUTO</b> 9-15 Fitzgerald's Auto Salvage Top Scrap Prices For Autos - Metals - Batteries - Industrial Scrap, Etc. Remember, Jesus Recycles People, We Recycle Cars. Sussex 856-3994 Lincoln 422-7584	<b>COUNSELING</b> 9-8 KENT COUNTY COUNSELING SERVICES CENTER FOR SUBSTANCE ABUSE TREATMENT-PREVENTION- INFORMATION- 736-4548 811 S. GOV. AVE. DOVER, DEL. 19901	<b>SEAFOOD</b> TF "CRABS" Live or Steamed Complete Line of Sea Food Fresh & Frozen OCEAN FRESH SEAFOOD ROUTE 13 HARRINGTON, DELAWARE Fresh Fish Daily 398-3874
<b>MOBILE HOME LOTS</b> 9-8 HIGH POINT MOBILE HOME PARK DELUXE MOBILE HOME LIVING. LARGE LOTS • PLAYGROUNDS • CONVENIENT LOCATION • POOL • Laundromat U.S. 113&113A Frederica. 335 5444	<b>FURNITURE</b> 9-2 BIG DIPPER FURNITURE STRIPPING Road 370-Near Kent Vo-Tech WOODSIDE, DEL. Phone 302-697-3550	<b>EQUIPMENT</b> TF TAYLOR & MESSICK, INC. JOHN DEERE FARM EQUIPMENT LAWN AND GARDEN EQUIPMENT -Sales and Service By Two-Way Radio Phone 302-697-3229 Harrington, DE	<b>MOTEL</b> 8-18 HOLIDAY MOTEL Cable Color TV, Room Telephones Air Conditioning, Tub Baths Service Daily - Weekly & Daily Rates 6 miles south of Harrington Fairgrounds MASTERCARD - VISA 349-4270	<b>COINS</b> 9-8 CASH FOR YOUR SILVER COINS (prior 1965) Sterling Silver CLAD HALF DOLLARS (1965-1980) Certified Wts. to within 0.1 oz. of a gram The Dover Army/Navy Store Call 736-1959 for current prices	<b>THRIFT SHOP</b> 9-2 NEARLY NEW BOUTIQUE Thrift Shops 1/2 Price Sale During the Month of August MILFORD 422-6856 CAMDEN 697-6866
<b>ROOFING REPAIR</b> 9-8 Don't live with a drip Let us solve your roof problems Able Roofing & Repair Co. 697-3783 Call any time for free estimates	<b>PHOTOGRAPHIC SPECIALIST</b> 9-8 RPS Studio Photographic Specialist 110 N. Washington St. Milford, Delaware 19963 (302) 422-5532 Portraits • Weddings Copy & Restoration	<b>REAL ESTATE</b> TFN 17 Commerce St. Harrington, Del. 19952 Office [302] 398-3455 FARROW REALTY Harry G. Farrow, Jr. Broker Home [302] 398-3250	<b>CONCRETE-SAND</b> TF Stayton's Sand & Gravel, Inc. Concrete & Mortar Sand Topsoil Stone Select & Regular Fill Dirt Delivered or Loaded on Your Truck PIT LOCATION: 1 Mile off Rt. 14 Milford Harrington Rd. West side of Road 84 Office: 284-9178	<b>BUILDING SUPPLIES</b> 9-15 Woodside Surplus Sales Lumber, Windows, Siding, Doors, Molding, Plywood, Roofing, Insulation, Refinishing, Paneling, Everything for the Builder & Homeowner. 3 1/2 Mi. South of Woodside Traffic Light on S. Bound Lane of U.S. 13. Weekday: 8-5 Sat. 8-1 284-4134	<b>FUEL OIL</b> 9-2 Peninsula Oil Co. Fuel Oil, Kerosene, Gasoline & Burner Service. 24Hour Service for Regular Customers Radio Dispatch Truck Automatic Delivery of Oil Level Payment Plans Available Shaw Ave. & Rt. 13, Harrington, De. 398-8344

**HARRINGTON JOURNAL**  
HARRY G. FARROW, JR. USPS-235940 Editor & Publisher ANNE PALADINO, General Manager

THE HARRINGTON JOURNAL (USPS 235940) is published every Wednesday by THE HARRINGTON JOURNAL, P.O. Box 239, 19 Commerce St., Harrington, DE 19952. Second Class postage paid at Harrington, DE. ADDITIONAL ENTRY OFFICE AT DOVER, DE 19901. POSTMASTER: Send address change to THE HARRINGTON JOURNAL, P.O. Box 239, Harrington, DE 19952. \$8.50 per year IN STATE, \$10.00 per year, OUT OF STATE.

Office of Publication 17 Commerce Street Harrington, DE 19952 1-302-398-3206

**DAWSON BUS TOURS**  
302-697-9501 Toll Free No. for New Castle & Sussex Counties Only. Gift Certificate Available 800-282-8525

Aug. 22 ..... Three Little Bakers "The King and I"  
Sept. 18 & Oct. 16 ..... Williamsburg Pottery  
Sept. 18 & Oct. 24 ..... Three Little Bakers "Babes In Arms"  
Sept. 23-26 ..... Vermont Foliage Tour  
Sept. 25 ..... Great Adventure  
Sept. 30-Oct. 3 ..... Vermont Foliage Tour  
Oct. 3 ..... Phillies vs. New York [300 Level Seats]  
Oct. 23 ..... Reading Outlets

## Bridgeville traffic-- Solutions suggested

by Norris J. Workman

[This continues a story on the weekend Bridgeville traffic backup begun last week.]

### Part II of II

Over a decade ago someone espoused the by-pass solution. That seemed to be the ideal answer, and it was kicked around for quite some time. But finally it was kicked to death. Now days the by-pass is hardly ever mentioned. Farmers in the area are unwilling to part with the necessary land, according to Robert Mulvaney, president of the Bridgeville Board of Commissioners. He said if the land were acquired, the total outlay in cash for the project would quite probably be larger than any other road project going on in the state.

So what is left?

"We're not pushing for a by-pass now," said Mulvaney. "I believe the answer lies in traffic lights. We need a right turn lane to accommodate beach traffic. With lights and a wider intersection at alternate 13 we could stop the backups."

A traffic light where route 404 connects to the Bridgeville-Federalburg road in front of the old Cannons' cannery would facilitate easier, safer access to Market Street. A light at the end of Market Street where the traffic feeds onto Alternate U.S. route 13, combined with the addition of a right turn lane to the south, would

allow the beachbound traffic almost continuous movement.

A right turn lane coming off the North Bridgeville end of Alternate U.S. 13 would allow westbound vehicles to continue unhampered by the beach flow. This turn lane would have to be extended west on Market Street for fifty yards to allow for traffic merging. Returning vehicles from the beach would simply continue using the existing line of movement, being halted occasionally by north-to-south traffic. The beach movement would also halt at that time.

Blocking a plan of this nature are businesses on the northern and southern corners of the Market-Main Streets intersection. A tractor business owned by Elmer and Paul Hoch on the north corner and an Exxon station on the south corner would have to yield real estate for this plan to become a reality.

In March, 1981, a plan similar to this (minus the right turn lane off alternate 13 onto Market Street and minus the light at 404) was studied by the Department of Transportation of Delaware. The cost estimate at that time was \$111,000. It would have been Bridgeville's responsibility to pay for electrical service and maintenance of the signal.

Although Town Hall is still seeking to acquire a traffic light, the results so far have been negative.



Lake Forest's Stephanie Dopirak [center] who was nominated for Gold Queen took part in Blue/Gold All Star parade and pre-game festivities with the Gold Queen [Laurie Krum of Caesar Rodney] and her court on Saturday. Lake Forest's other nominee Wanda Carney was not present for the activities [photo by Rebecca Brown].



A friendly beast is this representative of the Lions Clubs of Delaware as he greets parade lovers at the Blue/Gold parade on Saturday. The Delaware Lions Clubs are the leading ticket sellers for the All Star game which benefits retarded children. The state's Lions account for over one third of the ticket sales.

### LAKE FOREST HIGH SCHOOL HONOR ROLL

#### FOURTH MARKING PERIOD

#### JUNIORS

#### DISTINGUISHED HIGH HONORS

#### Connie Gerardi

#### DISTINGUISHED HONORS

Deanna Arrington, Christopher Caskey, Cheryl Donovan, Roland Cohee, Deborah Roland, Donna Underwood, Tracey Woikoski, Darlene Wyatt.

#### HIGH HONORS

Patrick Larimore

#### HONORS

Ron Harris, Eva Gruwell, Joshua Howerin, Caryl Horseman, Sharon Latocha, Terri Smith, Sondra Ware, Steven Wroten.

#### SOPHOMORES

#### DISTINGUISHED HIGH HONORS

Jeffrey Moore, Steven Moore, Pamela Pierce

#### DISTINGUISHED HONORS

Trish Gannon, David Jarrell, Candace Short, Oye Skaggs, Sondra Warren, Dawn Welch, Carolyn Winder

### HONORS

Ernest Baynum, Tina Greenly, Rebecca Hammett, James Moss, David Reiriden, Rosena Pickett, Lisa Skinner, Robin Zareo

#### FRESHMAN

#### DISTINGUISHED HIGH HONORS

Gary Price

#### DISTINGUISHED HONORS

John Caskey, Phillip Cataldi, Michael Cole, Maria Kazlauskas, Paul Meding, Karen Sipple

#### HONORS

Grace Conner

### Coming Event

**AUGUST 30 - SEPT. 2** - Delaware State College Fall Semester Evening School registration will be held August 30 through September 2 from 8:30 a.m. to 8 p.m. and through the lunch hour in the Center for Continuing Education for the convenience of working adults. Evening classes begin Tuesday, September 7. More than two dozen courses will be "guaranteed" and not cancelled. Course schedules are available by contacting Continuing Education.

### TOUR GUIDES SOUGHT

The Delaware Art Museum is seeking volunteer docents to give tours of the Museum's permanent collection, special exhibits and children's gallery. Docents-in-training receive an art history survey course covering Western and American art. They learn to look at art, understand it and communicate to others about it. Docents also learn how to use the Museum's fine art reference library.

Docent training sessions take place on Tuesday mornings, starting in mid-September. Docents are required to spend the equivalent of one full day per week at the Museum. For further information about this program, call 571-9594.

### REGISTRATION FOR FALL ART CLASSES

Delaware Art Museum is now accepting registrations for adult and children's art classes which begin in mid-September. Both day and evening classes for adults are offered, including instruction in beginning and advanced drawing, painting and water-color, printmaking, pottery, weaving, silversmithing and color photography. Mixed media art classes for children are offered according to age groups and are held on Saturday mornings.

Tuition fees for children's classes range from \$44 to \$71 for the 12-week term, and fees for adult classes range from \$65 to \$100 for a 13-week term. A brochure describing classes, times and fees is available by calling 571-9594.

### HOSPITAL NOTES

**8-4-82**  
**ADMISSIONS**  
Rosmarie Cain, Julia Bernard, Walter Thomas, Sr., Viola Givens, Willie Knight, Pauline Cohee, Linda Sneller, Kyle Kelley, Tabitha Hughes, Linda Callaway, Owen Reid.  
**DISCHARGES**  
George Jones, Samuel Benson, Jodi Cohee, Frances Drummond, Patsy Foraker, Richard Lynch, Raven Maull, John Mitchell, Jr., Mary Nickerson, Julie Remus, Lorece Sharp, William White.

**8-5-82**  
**ADMISSIONS**  
Martha Cooper, Violet Bernard, Marjorie Hayes, Debra Hammett, Carol Hastings, Sharon Palmer, Jane Wheatley, Deborah Hood.  
**DISCHARGES**  
Jeffrey Bennett, Mary Clifton, James Crabb, Virgil Foskey, Agnes Heather.

**8-6-82**  
**ADMISSIONS**  
None  
**DISCHARGES**  
Ethel M. Cannon, Martha B. Greenlee, Benton E. Hall, Ruth D. Howell, Tabitha C. Hughes, James C. Johnson, Mary E. Kelly, Lidia M. Walls.

**8-7-82**  
**ADMISSIONS**  
Viola A. Abbott, Pamela M. Cannon, Louis Garardi, Jr., David L. O'Brien, Huland F. Webb.  
**DISCHARGES**  
Kathryn A. Burnett, Linda G. Callaway, Emma L. Harding, Ethel R. Weaver, Jane R. Wheatley.

**8-8-82**  
**ADMISSIONS**  
Walter Wright, Ralph Hoebe, Jr., Sonia Jones, Maria Alston, Donna Green, Vickie Harvorson, Jane Knight, Ruth Rogers, Leon Scott, Ernest Tucker.  
**DISCHARGES**  
Alfred Cannon, David O'Brien, Sharon Palmer, Gwendolyn Williamson.

**8-9-82**  
**ADMISSIONS**  
Mary Pelham, Ula Holland, David Snyder, Joan Wohlever, Lillian King, Lewis Carter, David Bradley, Sr., Gary Hastings.  
**DISCHARGES**  
Pauline Cohee, Rhonda Davis, Jane Knight, Sherry Prettyman, Leon Scott, Anna Tharpe, Ethel Tillman, Margaret Wilson.

**8-10-82**  
**ADMISSIONS**  
Iris Downing, John Aptt, Clara Burford, Jasin Smith, Margaret Wood, Martina White, Holly Atkins, Natasha Waters, Margaret Hall.  
**DISCHARGES**  
Natasha Waters, Maxine Crouch, Donna Green, Carol Hastings, Deborah Hood, Sonia Jones, Edgar Killen, Owen Reid, Catherine Toomey, Hyland Webb.

**8-11-82**  
**ADMISSIONS**  
Stella Nesmith, Sylvia King, Debra Richard, Alvin Fitzgerald, Jr., Sandra Virola, Winnie Spralden, Yvette Griffin, Wanda Long, Timothy Corkell, Jenny Loper, Laquinta Brown, Ruth Donophan, Willard Griffith, Delores Drummond.  
**DISCHARGES**  
Debra Richards, Julia Bernard, Rosemarie Cain, Ruth Rogers, Edwin Simpson.

**8-12-82**  
**ADMISSIONS**  
William Spatera, Barbara Bagwell, Candy Atkinson, Gerald Hudson, Linda Griffin, Pamela Mills.  
**DISCHARGES**  
Maria Alston, Holly Atkins, Kathleen Beck, Pamela Cannon, Iris Downing, Ralph Hoebe, Jr., David Snyder, Lisa Williamson, Patricia Workman.

**Mon.-Thurs., Sat.**  
9 a.m. - 6 p.m.  
**Friday 9 a.m. - 8:30 p.m.**  
**Sunday 1 p.m. - 6 p.m.**

# Greenwood Farms

**August 18**  
through **31**

**ROUTE 16 · GREENWOOD, DELAWARE 19950 · (302)349-5267**

**Manhattan Oven Roast.....\$2.89 lb.**

**Pork Tenderloin.....\$2.79 lb.**

**Chopped Loaf.....\$1.99 lb.**

**Munster Cheese.....\$2.39 lb.**

**\$154.95 ECON-O-PACK \$154.95**

6-6 oz. Delmonico Steaks  
36-2 oz. Hamburger Patties  
6-6 oz. Salisbury Steaks  
Loin End Pork Roast (2 1/2 - 3 lbs.)  
Country Style Rib (2 1/2 - 3 lbs.)  
Boneless Beef Roast (2 1/2 - 3 lbs.)

1 1/2 - 2 lbs. Chuck Roast  
1 1/2 lbs. Ham Steak  
1 1/2 - 2 lbs. Meat Loaf  
2 1/2 lbs. Boneless Pork Roast  
18-4 oz. Pork Chops  
2 - Cut-up Fryers (2 1/2 lbs.)

2 - Chuck Roast (2 1/2 - 3 lbs.)  
1 1/2 lbs. Ground Beef  
6-6 oz. Pork Steaks  
20 - Hot Dogs (2 lbs.)  
4-10 oz. Rib Steaks  
4-1 lb. pkg. Bacon  
16 pcs. Chicken (drumstick & thigh) (3 1/2 lbs.)

\*3 Corn  
\*Mixed Vegetables  
\*6 Small Lima Beans  
\*6 Small Peas

\*9 String Bean  
\*9 Potatoes  
\*2 Tomatoes  
\*4 Pork & Beans

5 lbs. Flour  
1 lb. Spaghetti  
2 lbs. Ragu Spaghetti Sauce  
(\*14 oz. Canned Vegetables)

**FREE WITH ECON-O-PACK PURCHASE**

**BUDGET STRETCHER #7**  
"Breakfast Lovers Special"  
**3 lbs. Scrupple**  
**2 1/2 lbs. Sausage Links**  
**2 lbs. Sausage Patties**  
**3 lbs. Country Bacon**  
**2 lbs. Ham Slices**  
**2 doz. Large White Eggs**

\$21.95

**24-4 oz. END CUT PORK CHOPS**  
\$12.79 a box  
**24-4 oz. ASSORTED PORK CHOPS**  
\$13.29 a box  
**24-4 oz. CENTER CUT PORK CHOPS**  
\$14.19 a box  
**14-6 oz. DELMONICO STEAKS**  
\$23.59 a box  
**10 lb. SPARE RIBS**  
\$23.69 a box

**FAMILY PACK #1**  
10 lbs. Assorted Steak  
8 lbs. Chuck Roast  
10 lbs. Chicken  
3 lbs. Meat Loaf  
5 lbs. Beef Patties  
3 lbs. Spare Ribs  
3 lbs. Bacon  
3 lbs. Pork Chops or Pork Steaks

45 lbs. for  
**\$91.00**

**FAMILY PACK #2**  
12 lbs. Assorted Steaks  
10 lbs. Beef Patties  
10 lbs. Chicken  
6 lbs. Chuck Roast  
3 lbs. Pork Chops or Pork Steaks  
3 lbs. Spare Ribs  
3 lbs. Meat Loaf  
3 lbs. Cubed Steak

50 lbs. for  
**\$99.00**

**FAMILY PACK #3**  
15 lbs. Assorted Steak  
10 lbs. Beef Patties  
10 lbs. Chuck Roast  
10 lbs. Chicken  
9 lbs. Boneless Beef Roast  
5 lbs. Beef Cubes  
5 lbs. Cubed Steak  
5 lbs. Spare Ribs  
3 lbs. Meat Loaf  
3 lbs. Hot Dogs  
3 lbs. Bacon  
3 lbs. Pork Chops or Pork Steaks

81 lbs. for  
**\$174.00**

**ALL WEIGHTS APPROXIMATE QUANTITY RIGHTS RESERVED.**

## Letter to the Editor

Dear Editor:

Shocking and Frightening the recent article in the News Journal about Rickie Thompson spending ten months in prison for a crime he did not commit. It is a disgrace and casts a disgusting image of the Delaware State Police. It appears to me that Rickie was the one to fit the crime and he was nailed. Do the top officials of the Justice Department, Police Commissioner, and the Governor really care about such matters? If not, the people of Delaware should stand up and be counted as you may be the next victim of this police incompetence. To keep this man in prison while Bob Hughes' fate was being determined was a conspiracy and cover up of police errors. It is some kind of coincidence that as Rick was being held, the defense attorney for Bob Hughes was in another courtroom attacking the police for their incompetencies—standing on the evidence, failure to collect evidence (cigarette butts around body), losing an address book, hearing testimony of the damp blanket for which a report was not filed until three years after Serita's death.

Bob Hughes was the target. Just like Rick Thompson, Father Pagano, Tom Young, Dave Dutton and God knows how many more that may be in prison for crimes they did not commit. The police seem to fit the suspect to the crime, then build the case around it with the help of prosecutors in the Justice Department through questionable Grand Jury proceedings, fabricated theories and magnified circumstances to make them look like fact. How utterly revolting it is that the first state, its officials and the people of Delaware will allow this kind of conduct to continue.

I have several suggestions to make to everyone that read the News Journal articles about Rickie Thompson:

1. Develop a Truth and Justice Committee via Rickie Thompson and help that poor man rebuild his life just as people all over the country have done for Bob Hughes and still continue to do; and they will continue doing this until someone decides to check the checker and stop this arrest and conviction of the first person and forget all the others.
2. Start a Helping Hand Fund for Rickie as he now faces heavy financial obligations. Why? Because he had to hire an outside investigator named Dean Wedge to do the job the police failed to do in the first place.
3. Rise and revolt against the recent promotions of any police officer found to be incompetent and derelict in his duty to apprehend real criminals and not just persons to fit the crimes as was done in the cases referenced herein.

Dear friends in Delaware (and you are our friends), Bob Hughes never would

have left Delaware had he been treated properly. Bob said "I felt like I was being pushed into a corner". The investigation against Bob never ceased. But friends, he is the wrong man spending his life in prison. Bob Hughes did not kill his wife, Serita; just like Rickie Thompson never killed the waitress, Tom Young never committed murder and Father Pagano never robbed a store. When you begin to revolt, you will find others, I feel sure, that were arrested and convicted for a crime they also did not commit.

I trust others will rally behind these persons that suffer great hardships by confinement for crimes they did not commit. Please tell me to whom I may send my check for Rickie.

Clarence W. Hughes  
2505 Thousand Oaks Boulevard  
Suite 157  
Thousand Oaks, CA 91362

Dear Editor:

I appreciate your news coverage on Kent County places with a historical perspective. Your paper is improving each issue!

C. R. "Bob" Godfrey

## Harrington Jaycees/Jaycettes have busy summer

The Harrington Jaycees and Jaycettes have had a busy July and August. The Jaycee's ice cream booth at the Delaware State Fair was a big success but did require a lot of time and effort. The Jaycettes provided much valuable assistance during the operation of the booth. The Jaycees were able to sign two new members during the fair. We would like to welcome George (G.B.) Langford and Terry Helsel to our chapter. Terry is new to this community, and we are glad to have both of these young men in our organization.

August 14th was the date of the annual Blue-Gold All Star Game played at the University of Delaware for the benefit of the mentally retarded. Several members of the Harrington Jaycees and Jaycettes traveled to Newark and joined other Jaycees and Jaycettes from throughout Delaware in selling refreshments at the game. This is one of several projects participated in by the Jaycees and Jaycettes for the benefit of the mentally retarded.

August 21st and 22nd will be the date of the annual Delaware Jaycee softball tournament to be held in Milford this year. We hope to have two teams representing Harrington at this year's tournament.

## Southern States SUMMER

### Prices Cut on Premium Protection

<p style="font-size: x-small;">No. 201 White House Paint (oil base) <b>\$25<sup>95</sup></b> 2-gal. can <small>Reg. Sug. Pr. \$29.00</small> <small>Slow-chalking, longer-lasting, self-cleaning.</small></p>	<p style="font-size: x-small;">No. 271 General Exterior White Paint (oil base) <b>\$19<sup>50</sup></b> 2-gal. can <small>Reg. Sug. Pr. \$23.00</small> <small>Easy bushing, good hiding, self-cleaning.</small></p>	<p style="font-size: x-small;">No. 756 Aluminum Metal &amp; Masonry Paint <b>\$12<sup>95</sup></b> gal. <small>Reg. Sug. Pr. \$17.50</small> <small>Economical coverage, heat-reflective, durable.</small></p>	<p style="font-size: x-small;">No. 502 Porch &amp; Floor Enamel (oil base) <b>\$11<sup>95</sup></b> gal. <small>Reg. Sug. Pr. \$16.00</small> <small>Tough, abrasion-resistant. Medium grey.</small></p>
<p style="font-size: x-small;">No. 302 Red Latex Barn Paint <b>\$14<sup>95</sup></b> 2-gal. can <small>Reg. Sug. Pr. \$18.50</small> <small>Hiding power, color retention, durability.</small></p>	<p style="font-size: x-small;">No. 415 Bright Red Super Barn Paint (oil base) <b>\$23<sup>50</sup></b> 2-gal. can <small>Reg. Sug. Pr. \$28.25</small> <small>Extended fade-resistant protection.</small></p>	<p style="font-size: x-small;">No. 351 Premium Latex Chalk-resistant White House Paint <b>\$14<sup>95</sup></b> gal. <small>Reg. Sug. Pr. \$18.75</small> <small>Ideal for wood above brick. Avoids running.</small></p>	<p style="font-size: x-small;">No. 321 Economy Latex Chalk-resistant White House Paint <b>\$11<sup>50</sup></b> gal. <small>Reg. Sug. Pr. \$13.00</small> <small>Avoids running. Flat. Acceptable durability.</small></p>
<p style="font-size: x-small;">No. 1501 White Latex Masonry Paint <b>\$10<sup>95</sup></b> gal. <small>Reg. Sug. Pr. \$14.50</small> <small>Use inside or outside. Paints damp surfaces.</small></p>	<p style="font-size: x-small;">Acrylic Latex Interior Wall Finish <b>\$10<sup>95</sup></b> gal. <small>Reg. Sug. Pr. \$14.50</small> <small>Choose: No. 1401 white, 1411 pastel colors, 1455 medium colors, 1460 deep tones.</small></p>	<p style="font-size: x-small;">Latex Metal Building Paints No. 5949 Coronet Red <b>\$9<sup>95</sup></b> <small>Reg. Sug. Pr. \$13.00</small> <b>No. 5954 Regal Blue</b> <b>\$10<sup>95</sup></b> <small>Reg. Sug. Pr. \$14.25</small></p>	<p style="font-size: x-small;">3-pc. Paint Roller Kit <b>\$3<sup>10</sup></b> <small>Reg. Sug. Pr. \$4.10</small> <small>9-in. metal tray, plastic frame and cover. No. 7510</small></p>
<p style="font-size: x-small;">1 1/2-in. Polyester Sash Brush <b>\$1<sup>95</sup></b> <small>Reg. Sug. Pr. \$2.50</small> <small>Long handle, angular cut, tapered bristles. No. 3110</small></p>	<p style="font-size: x-small;">Polyester Paint Brushes 3-in. <b>\$3<sup>50</sup></b> <small>Reg. Sug. Pr. \$4.60</small> 4-in. <b>\$4<sup>95</sup></b> <small>Reg. Sug. Pr. \$6.40</small> No. 3040</p>		

## Peck Bros. Farm Supply

213 Harrington Ave. 398-3654 Harrington, DE

Mon-Fri. 8 am to 5 pm Sat. 8 am to 12 pm

**VALUABLE**

**LIPTON TEA BAGS**

100 CT. PKG. **\$1.59**

EXPIRES AUG. 21, 1982  
WITH COUPON & \$10.00 PURCHASE

**COUPON**




**VALUABLE**

**FOLGERS COFFEE**

1 LB. CAN **\$1.99**

EXPIRES AUG. 21, 1982  
WITH COUPON & \$10.00 PURCHASE

**COUPON**



**VALUABLE**

**DASH GIANT DETERGENT**

49 OZ. PKG. **\$1.59**

EXPIRES AUG. 21, 1982  
WITH COUPON & \$10.00 PURCHASE

**COUPON**



**VALUABLE**

**ERA KING SIZE DETERGENT**

64 OZ. BOTTLE **\$2.99**

EXPIRES AUG. 21, 1982  
WITH COUPON & \$10.00 PURCHASE

**COUPON**



**WEAVERS FAMOUS (LOW IN FAT HIGH IN PROTEIN)**


**CHICKEN FRANKS** 1 LB. PKG. **79¢**

**FRESH GROUND CHUCK** LB. **\$1.59**

**ESSKAY WHOLE SMOKED PICNICS** LB. **99¢**

**JENNIE-O FRESH FROZEN TURKEY DRUMSTICKS OR WINGS** LB. **59¢**

**100% PURE BEEF GROUND BEEF (3 LB. OR MORE)** **\$1.39**



USDA INSPECTED GRADE "A"

**ECON O PAK FRYERS**

**53¢ LB.**



USDA INSPECTED GRAIN FED WESTERN BEEF

**BONELESS CHUCK ROAST**

**1.69 LB.**



**DELI SPECIALS**

AVAILABLE AT STORES WITH DELICATESSEN.  
"TENDER, TASTY MEAT & CHEESE CUSTOM CUT TO YOUR LIKING"  
(ALL ITEMS DELI SLICED)

ESSKAY SWEETKORN **\$1.19**

**COOKED HAM** \$2.38 LB. 1/2 LB. **\$1.19**

ESSKAY HAM & CHEESE LOAF **\$1.19**

**OR SALAMI.** LB. **\$1.19**

ESSKAY **LIVERWURST.** LB. **\$1.19**

ARMOUR SMOOTH AND CREAMY **CHEESE** \$2.38 LB. 1/2 LB. **\$1.19**

SHARP PORTWINE, HOT PEPPER, ONION, SALAMI CHEESE

**DAIRY SPECIALS**

CHIFFON QUARTERS 16 OZ. **2/\$1**

**MARGARINE.** **2/\$1**

LIGHT N LIVELY 8 OZ. 9 VARIETIES **YOGURT.** **3/\$1**

KRAFT COLBY 1 LB. WHITE OR COLORED **MIDGET LONGHORN CHEESE.** **\$2.29**

KRAFT 10 OZ. SHARP CRACKER BARREL **CHEESE.** **\$1.79**

KRAFT GRATED 8 OZ. PARMESAN **CHEESE.** **\$2.09**

SOFT PHILADELPHIA 8 OZ. CREAM **CHEESE** **89¢**

**frozen food Festival**

MINUTE MAID 12 OZ. FROZEN ORANGE **JUICE.** REGULAR **99¢**

MINUTE MAID 12 OZ. FROZEN ORANGE **JUICE.** MORE PULP **99¢**

ORE IDA 20 OZ. ONION **RINGERS** **\$1.09**

CHEF SALUTO 12" **CHEESE 19 OZ.** **\$1.99**

**PIZZA** **\$1.99**

AUNT JEMIMA 10 OZ. FROZNE **5 VARIETIES WAFFLES** **69¢**

MORTON MINI 3 1/2 OZ. 9 VARIETIES CREAM **PIES** **2/89¢**

**FRESH! FROM FARM TO YOU PRODUCE**

CALIFORNIA ICEBERG **LETTUCE** HEAD **49¢**


EASTERN **CARROTS** 1 LB. PKGS. **4/99¢**

LOCAL GROWN **TOMATOES** 3 LB. **29¢**

WHITE OR RED **SEEDLESS GRAPES.** LB. **79¢**

LOCAL **CANTALOUPE** EACH **69¢**

CALIFORNIA **NECTARINES** LB. **49¢**



**SUPER SAVINGS on SUPER FOODS**

GROCERS PRIDE 16 OZ. CANS **WHOLE POTATOES** **3/\$1.00**

GROCER S PRIDE 16 OZ. CANS **SLICED POTATOES** **3/\$1.00**

GROCER S PRIDE **SLICED CARROTS.** **3/\$1.00**

GROCERS PRIDE 16 OZ. CANS **MIXED VEGETABLES** **3/\$1.00**

KELLOGGS 11 VARIETIES 11 OZ. PKG. **POP TARTS** **69¢**

MARA CL WHITE OR ASST. 200 CT. PKG. **FACIAL TISSUE** **59¢**

**WISHBONE DRESSING**

8 VARIETIES **8 OZ. BOTTLE** **59¢**



**SCOTT PAPER TOWELS**

**3 200**

ROLL 3 VARIETIES

CUT OR FRENCH

**GROCERS PRIDE GREEN BEANS**

**3 100**

16 OZ. CANS



**GIOIA SPAGHETTI SAUCE**

REG., WITH MEAT OR WITH MUSHROOMS **32 OZ. JAR** **99¢**

PRICES EFFECTIVE THRU AUG. 21, 1982



**HARRINGTON FOOD RITE**  
LOCALLY OWNED & OPERATED



398-4398

Quillen Shopping Center

NOT RESPONSIBLE FOR TYPOGRAPHICAL ERRORS - WE RESERVE THE RIGHT TO LIMIT QUANTITIES.

Monday, Tuesday & Wednesday 8-6  
Thursday 8-8  
Friday 8-9  
Saturday 8-7  
Sunday 10-4

## Local Interest

by Joanne Wyatt 398-3943

Sympathy of the community is extended to Sammy and Irene Layton and family on the loss of their son, Steve. Get well wishes go out to Mr. Jack Aptt.

Mr. and Mrs. Orville Smith or Largo, Florida have been visiting relatives and friends in and around Harrington. On their departure for home, they were accompanied by their grandson, Andy Wright of Laurel, DE and Mrs. Ethel Rapp of Harrington. Ethel and Andy spent two weeks visiting the Smiths and visited various places of interest there. They flew to Philadelphia airport from Tampa, where Mr. and Mrs. Gene Wright met them.

Mrs. Margaret Stewart and Mr. Earle Benton of Centreville, MD and Mrs. Ethel Rapp of town attended the forty fifth wedding anniversary of Mr. and Mrs. Charles Hammer of Greensboro, MD on Saturday evening held at the Denton Country Club. The children of the Hammer's surprised their parents for this happy occasion.

Get well wishes go out to Viola Anthony.

Freddie Wyatt spent three days in New Castle visiting with J.R. Durr and family. While there, the boys enjoyed fishing, swimming and going to the races. On Saturday, his Uncle Rick, Marianne, JR and Ronald brought him home. We all enjoyed dinner together. The kids enjoyed swimming and horseback riding. All had a lovely afternoon and evening.

Monday evening, August 9 thru Friday evening, Aug. 13, Vacation Bible School was held at Asbury United Methodist Church. Under the direction of Mrs. Mary Lou Betts and a fine group of loving teachers and helpers, they had a good attendance.

On Sunday the 11 a.m. service was dedicated to the Bible School. Each of the children and families that attended received the greatest gift...Love.

Mrs. Clara Hammond is a patient in Milford Memorial Hospital, room 229, wishing her well!

Little League meeting, Thursday evening, August 19 at 7:30 p.m. Everyone is welcome!

Mrs. Janice Winkler enjoyed the Kenny Rogers Show and Larry Gatlin at the Spectrum in Philadelphia on Saturday evening.

The Lake Forest Band Boosters will hold their regular meeting on Monday evening, August 23. The time has been changed from 7:30 to 7 p.m. for this meeting. All band parents and interested persons are invited to attend. "Cathy Carson, wife of Wayne Carson of Fairfax, Del. has been known to frequent Cowtown Rodeo, as seen on Saturday, August 14."

Someone's feet went out from under them when they got a gallon of milk in Quillens one night last week, wonder

who it was? "Totty" ring a bell? Harrington's Fourth Annual Heritage Day is coming up fast. Saturday, September 18, mark it on your calendars! Senator Joe Biden will be the keynote speaker. Messick's Museum will be open. Crafts will be at Taylor and Messick. We will have two spinners that were featured at the Delaware State Fair, and there will be a street dance in the First National Bank Parking lot from 7 to 11 p.m. Music by the Wranglers. A full day of fun for all!

The Greater Harrington Historical Society will be sponsoring a Beef, Ham & Dumpling dinner on October 2. Advance tickets will soon be on sale by some local merchants and Historical Society members.

Sympathy is extended to the Robert Monroe family.

Sympathy is also extended to the family of Edgar Tucker.

Mr. Woodrow Welch has returned home from the hospital. Continuing to wish him a speedy recovery.

Vacation Bible School will be held Monday, August 23 thru Friday August 27 from 6 to 8 p.m. at Calvary Wesleyan Church on Delaware Avenue.

A family birthday party was held in honor of Marvin Wix of Rochester, PA, Marlene Wix of Zelinople, PA and Kenneth Wix of Smyrna at the home of Mr. and Mrs. Norman Wix, Jr. Donald and Georgia Wix of Exton, PA along with thirty two other family members joined in the celebration.

The Norman P. and Nettie D. Saunders Wix family reunion was held on Sunday afternoon August 15 at the Moose with 144 present. All had a nice day.

Happy Birthday to Mr. Earle Dempsey from his family "We love you". Frannie, Earle II, and Crystal

Mr. and Mrs. Frank Bradley and Mr. and Mrs. Elmer Brown visited Mr. and Mrs. Frank Bradley, Jr. in Lincoln on Sunday afternoon.

Brad and Marsha Morris of Harrington are proud to announce the birth of their second child, a son, Trevor Brandon. Trevor was born 11:26 a.m. August 1 at Milford Memorial Hospital, weighing in at a happy 9 lb. 4 1/2 oz. Trevor was warmly welcomed by his four year old sister, Hayley Danielle.

The proud Grandparents are Charles and Janet Morris of Harrington and Mrs. John Luff of near Denton and the late John Luff. Congratulations to the Morris family!

Diane Porter and Richard J. Fryer were married on June 25, 1982 at Calvary Wesleyan Church by the Rev. Wm. H. Miller. Mrs. Fryer is the daughter of Mr. and Mrs. Frank Porter. Congratulations!

Get well wishes go out to our little nephew, Aaron Wyatt who had the misfortune of a fall this week.

Well wishes to all, Take care, Share a smile, God Bless.

On Sunday afternoon August 8th at the home of their grandparents, Mr. and Mrs. Charles Marvel, Michelle Green of Felton, Stacy Ann Marvel of Harrington, John Wayne Marvel of Farmington, John West, Kyrstal West and Sherry West of Milford were christened by Rev. Jack Robinson. Other guests on Sunday were Mr. and Mrs. Frances Timmons of Millsboro.

On Saturday, August 7th, the family of Ada Passwaters held a family reunion at Blair's Pond. Attending with Mrs. Passwaters were her children, Walter and Vickie Passwaters, Emery and Betty Elliot, Albert and Gina Passwaters all of Houston, Clayton and Ellie Mae King of Milford and Ida Nowell and Becky. Also 16 grandchildren and 5 great-grandchildren.

Beverly and Robert Neibert and son Chris and guest Phillip Herber of Lincoln, spent the weekend in their mountain cabin near Slanesville, W.V.

Houston and Virginia Twilley spent the weekend with Tony and Marie Talaris of Reading, PA.

Pauline Morgan spent the weekend with Mr. and Mrs. Clifford Bergstrom of Wilmington.

Pluto is no longer the most distant planet from the sun. In 1978, it and Neptune exchanged places. They change again in March, 1999.

Report from Hickory Ridge Congregational Methodist Church: The pastor and his family wish to thank all the kind folk who have presented them with fruits and vegetables this summer. They are much enjoyed.

We are glad that George Johnson is home again and would like visitors. Ruby Bragg has to return to the Andrews A.F. Base for further treatment. Mrs. Virginia Wiseman has been in the hospital for second degree burns. Our sympathy to Joe Prettyman and his family on the loss of their father.

Get well wishes go out to our little nephew, Aaron Wyatt who had the misfortune of a fall this week.

Well wishes to all, Take care, Share a smile, God Bless.

Pluto is no longer the most distant planet from the sun. In 1978, it and Neptune exchanged places. They change again in March, 1999.

Report from Hickory Ridge Congregational Methodist Church: The pastor and his family wish to thank all the kind folk who have presented them with fruits and vegetables this summer. They are much enjoyed.

We are glad that George Johnson is home again and would like visitors. Ruby Bragg has to return to the Andrews A.F. Base for further treatment. Mrs. Virginia Wiseman has been in the hospital for second degree burns. Our sympathy to Joe Prettyman and his family on the loss of their father.

Get well wishes go out to our little nephew, Aaron Wyatt who had the misfortune of a fall this week.

Well wishes to all, Take care, Share a smile, God Bless.

Pluto is no longer the most distant planet from the sun. In 1978, it and Neptune exchanged places. They change again in March, 1999.

Report from Hickory Ridge Congregational Methodist Church: The pastor and his family wish to thank all the kind folk who have presented them with fruits and vegetables this summer. They are much enjoyed.

We are glad that George Johnson is home again and would like visitors. Ruby Bragg has to return to the Andrews A.F. Base for further treatment. Mrs. Virginia Wiseman has been in the hospital for second degree burns. Our sympathy to Joe Prettyman and his family on the loss of their father.

Get well wishes go out to our little nephew, Aaron Wyatt who had the misfortune of a fall this week.

Well wishes to all, Take care, Share a smile, God Bless.

Pluto is no longer the most distant planet from the sun. In 1978, it and Neptune exchanged places. They change again in March, 1999.

Report from Hickory Ridge Congregational Methodist Church: The pastor and his family wish to thank all the kind folk who have presented them with fruits and vegetables this summer. They are much enjoyed.

We are glad that George Johnson is home again and would like visitors. Ruby Bragg has to return to the Andrews A.F. Base for further treatment. Mrs. Virginia Wiseman has been in the hospital for second degree burns. Our sympathy to Joe Prettyman and his family on the loss of their father.

Get well wishes go out to our little nephew, Aaron Wyatt who had the misfortune of a fall this week.

Well wishes to all, Take care, Share a smile, God Bless.

Pluto is no longer the most distant planet from the sun. In 1978, it and Neptune exchanged places. They change again in March, 1999.

Report from Hickory Ridge Congregational Methodist Church: The pastor and his family wish to thank all the kind folk who have presented them with fruits and vegetables this summer. They are much enjoyed.

We are glad that George Johnson is home again and would like visitors. Ruby Bragg has to return to the Andrews A.F. Base for further treatment. Mrs. Virginia Wiseman has been in the hospital for second degree burns. Our sympathy to Joe Prettyman and his family on the loss of their father.

Get well wishes go out to our little nephew, Aaron Wyatt who had the misfortune of a fall this week.

Well wishes to all, Take care, Share a smile, God Bless.

Pluto is no longer the most distant planet from the sun. In 1978, it and Neptune exchanged places. They change again in March, 1999.

Report from Hickory Ridge Congregational Methodist Church: The pastor and his family wish to thank all the kind folk who have presented them with fruits and vegetables this summer. They are much enjoyed.



Gold cheerleaders Linda Smack, left, and Cheryl Cerklefskie, both of Lake Forest, had a great time participating in the Blue/Gold All Star festivities over the weekend. They reported enjoying their buddies in the "Hand-in-Hand" program which matches retarded children with All Star participants. Both also said they would leave the weekend even more appreciative of the gifts God has given them.

## Gab Fest

by Pat Hatfield 349-4255

Today is my deadline to get the Gab Fest off to all of you faithful readers, so lean your elbows on the back fence and take time to smell the roses while we talk. This, I like doing better than anything else I do, but right now I should be canning tomatoes. I had planned to freeze some whole and not can any, but after checking the cupboard I find that my reserve is lower than I thought, so it is to the canning kettle for me. I still do them open kettle method as my mother and grandmother did and I have perfect success, but some of you tell me you do not. I boil the jars and the lids. I cut the tomatoes in quarters, add no water, and let them boil hard with a good seasoning of salt. Then I fill the jars and seal. I have just used some that I did year before last and they were perfect, so I see no reason to change. Peaches I cold pack because it is easier and I think the flavor is better, but my mother and grandmother just did them by open kettle method also.

My husband is like my mother in his ideas. He says, "Better do an oversupply; you don't know what the winter will bring in hardship and maybe somebody will need them if we do not." Many times I've seen my mother go down the street to a less fortunate neighbor with her arms full of canned fruits or vegetables, with her big old checked apron thrown over them. It is good to share.

Once again we have to turn our activity toward getting the youngsters ready for school. Our little one at 8 1/2 is

getting opinionated as her big sister about what she considers the proper clothing. Teddy, the young man in our family, has definite ideas about what he will or will not wear. When our Ronald was growing up in high school, he was happy if he had a supply of jeans and some clean shirts, but Teddy goes along rejecting most of our ideas; "Oh, no, Mom, the guys don't wear THAT". We try to convince him that he looks marvelous in turtleneck sweaters, but until some cute little girl tells him, he will not listen.

Well, that's the outside trimmings. Now, what is going to go into their minds? I was interested in how they dealt with this subject back in 1879. Here is a paragraph from the old almanac:

Quote: "What To Teach A Child. What shall I teach my child? Teach him that it is better to die than to lie; that it is better to starve than to steal; that it is better to be a scavenger or wood-chopper than to be an idler or a dead-beat; that labor is the price of all honest possessions; that no one is exempt from the obligation to labor with head, or hands, or heart; that an honest man is the noblest work of God"; that knowledge is power; that labor is worship, and idleness is sin; that it is better to eat the crust of independent poverty than to luxuriate amid the richest viands as a dependent. Teach him these facts until they are woven into his being and regulate his life, and we will insure his success, though the heavens fall."

They had it all together back there in the 1800's. Have we lost some of that vision?

On Wednesday, July 21, Donnie and Derek Lofland, Jim and Pete Retzlaff and Harold roto drove to Baltimore Memorial Stadium. There they saw the Baltimore Orioles defeat the California Angels 8 to 7. Everyone had a good time.

The next day, July 22, Donnie celebrated his birthday with family and friends.

The Rev. and Mrs. William A. Davis and children of Cleveland, Tenn., spent the weekend with his parents, Mr. and Mrs. Allison Davis. Todd remained for a ten-day visit with his grandparents while his parents went to Kansas City, MO.

The Greenwood Lioness Club held their August meeting on Monday evening at the home of Lioness Pat Hatfield. The Lioness members are responsible for supplying workers at the counter for the Lions Club Barbeque. We worked on perfecting our schedule. Plans were discussed for a trip to Williamsburg Pottery for this fall. Call 349-5158 for further information if you are interested in reserving a seat.

Before refreshments were served the Club presented their president, Lioness Bonnie Maloney with an auto seat for the expected baby.

On Wednesday, July 21, Donnie and Derek Lofland, Jim and Pete Retzlaff and Harold roto drove to Baltimore Memorial Stadium. There they saw the Baltimore Orioles defeat the California Angels 8 to 7. Everyone had a good time.

The next day, July 22, Donnie celebrated his birthday with family and friends.

The Rev. and Mrs. William A. Davis and children of Cleveland, Tenn., spent the weekend with his parents, Mr. and Mrs. Allison Davis. Todd remained for a ten-day visit with his grandparents while his parents went to Kansas City, MO.

The Greenwood Lioness Club held their August meeting on Monday evening at the home of Lioness Pat Hatfield. The Lioness members are responsible for supplying workers at the counter for the Lions Club Barbeque. We worked on perfecting our schedule. Plans were discussed for a trip to Williamsburg Pottery for this fall. Call 349-5158 for further information if you are interested in reserving a seat.

Before refreshments were served the Club presented their president, Lioness Bonnie Maloney with an auto seat for the expected baby.

On Wednesday, July 21, Donnie and Derek Lofland, Jim and Pete Retzlaff and Harold roto drove to Baltimore Memorial Stadium. There they saw the Baltimore Orioles defeat the California Angels 8 to 7. Everyone had a good time.

The next day, July 22, Donnie celebrated his birthday with family and friends.

The Rev. and Mrs. William A. Davis and children of Cleveland, Tenn., spent the weekend with his parents, Mr. and Mrs. Allison Davis. Todd remained for a ten-day visit with his grandparents while his parents went to Kansas City, MO.

The Greenwood Lioness Club held their August meeting on Monday evening at the home of Lioness Pat Hatfield. The Lioness members are responsible for supplying workers at the counter for the Lions Club Barbeque. We worked on perfecting our schedule. Plans were discussed for a trip to Williamsburg Pottery for this fall. Call 349-5158 for further information if you are interested in reserving a seat.

Before refreshments were served the Club presented their president, Lioness Bonnie Maloney with an auto seat for the expected baby.

On Wednesday, July 21, Donnie and Derek Lofland, Jim and Pete Retzlaff and Harold roto drove to Baltimore Memorial Stadium. There they saw the Baltimore Orioles defeat the California Angels 8 to 7. Everyone had a good time.

The next day, July 22, Donnie celebrated his birthday with family and friends.

The Rev. and Mrs. William A. Davis and children of Cleveland, Tenn., spent the weekend with his parents, Mr. and Mrs. Allison Davis. Todd remained for a ten-day visit with his grandparents while his parents went to Kansas City, MO.

The Greenwood Lioness Club held their August meeting on Monday evening at the home of Lioness Pat Hatfield. The Lioness members are responsible for supplying workers at the counter for the Lions Club Barbeque. We worked on perfecting our schedule. Plans were discussed for a trip to Williamsburg Pottery for this fall. Call 349-5158 for further information if you are interested in reserving a seat.

Before refreshments were served the Club presented their president, Lioness Bonnie Maloney with an auto seat for the expected baby.

On Wednesday, July 21, Donnie and Derek Lofland, Jim and Pete Retzlaff and Harold roto drove to Baltimore Memorial Stadium. There they saw the Baltimore Orioles defeat the California Angels 8 to 7. Everyone had a good time.

The next day, July 22, Donnie celebrated his birthday with family and friends.

The Rev. and Mrs. William A. Davis and children of Cleveland, Tenn., spent the weekend with his parents, Mr. and Mrs. Allison Davis. Todd remained for a ten-day visit with his grandparents while his parents went to Kansas City, MO.

The Greenwood Lioness Club held their August meeting on Monday evening at the home of Lioness Pat Hatfield. The Lioness members are responsible for supplying workers at the counter for the Lions Club Barbeque. We worked on perfecting our schedule. Plans were discussed for a trip to Williamsburg Pottery for this fall. Call 349-5158 for further information if you are interested in reserving a seat.

Before refreshments were served the Club presented their president, Lioness Bonnie Maloney with an auto seat for the expected baby.

On Wednesday, July 21, Donnie and Derek Lofland, Jim and Pete Retzlaff and Harold roto drove to Baltimore Memorial Stadium. There they saw the Baltimore Orioles defeat the California Angels 8 to 7. Everyone had a good time.

The next day, July 22, Donnie celebrated his birthday with family and friends.

The Rev. and Mrs. William A. Davis and children of Cleveland, Tenn., spent the weekend with his parents, Mr. and Mrs. Allison Davis. Todd remained for a ten-day visit with his grandparents while his parents went to Kansas City, MO.

The Greenwood Lioness Club held their August meeting on Monday evening at the home of Lioness Pat Hatfield. The Lioness members are responsible for supplying workers at the counter for the Lions Club Barbeque. We worked on perfecting our schedule. Plans were discussed for a trip to Williamsburg Pottery for this fall. Call 349-5158 for further information if you are interested in reserving a seat.

Before refreshments were served the Club presented their president, Lioness Bonnie Maloney with an auto seat for the expected baby.

On Wednesday, July 21, Donnie and Derek Lofland, Jim and Pete Retzlaff and Harold roto drove to Baltimore Memorial Stadium. There they saw the Baltimore Orioles defeat the California Angels 8 to 7. Everyone had a good time.

The next day, July 22, Donnie celebrated his birthday with family and friends.

The Rev. and Mrs. William A. Davis and children of Cleveland, Tenn., spent the weekend with his parents, Mr. and Mrs. Allison Davis. Todd remained for a ten-day visit with his grandparents while his parents went to Kansas City, MO.

## Senior Center

by Dorothy Graham

Smile! Life is like a jigsaw puzzle with most of the pieces missing!

Mrs. Clara Judy lead Bible Study Monday morning at the Center, as her assistant Mrs. Sylvia Meredith helped. Sylvia also played the piano for all the music used. The topic for discussion was Hebrews, 10th chapter. Present at the inspirational hour were Clara Judy, Sylvia Meredith, Frances Wright, Ethel Holden, Mildred Vincent, Mary Sapp, Thelma Legates, Cecil Meredith, John McCready, Marion, Roxanne Brown, Tony Perrone, Florence Minner, Elwood Morris, Anna Mae Short, Mamie Adams, Helen Traisberry. A prayer and lots of good singing began the week at the Center!

Members meeting was opened by President Maurice Adams, Monday afternoon at 1 p.m. with Pledge of Allegiance by all. Prayer by Mamie Adams. Secretary "Andy" Anderson read minutes of last meeting, Merle Roth read the financial report. Both approved as read. Old business taken care of, they proceeded on to the new. The Bazaar for Fall was discussed and decided to have it on Nov. 5, 1982, Friday.

The folks at the meeting inquired of the folks that were ill.

Open House was discussed for Heritage Day, September 18, 1982. It was planned to have things for sale inside. Meeting was adjourned at 1:45 p.m.

Julia's solo resounded thru the Center

## Felton/Sandtown

by Lola O'Day 284-9175

Miss Becky Chambers of Viola, celebrated her 9th birthday on August 12th. Grandmom Margaret Chambers had a spaghetti dinner for Becky, with her brothers, David and John. Following dinner, her mother Sue Chambers had planned a birthday party with grandparents Mr. and Mrs. Carlton Haines, Mrs. Margaret Chambers, Pam Gil, Kristen Casden, Rose and Tina Bowler, Tara and Lisa Tobias, Jimmie Taber, Heather & Danny Haines, Jr., Loey Voshell and family. Very enjoyable party, good time for everyone.

Mr. Lester O'Day from Long Island, N.Y. was a guest of Lola O'Day of Felton on Saturday, Aug. 14.

Michael Faulkner, son of Mr. and Mrs. Brent Faulkner of Felton will be admitted in Milford Hospital, Aug. 16, 1982 for surgery Aug. 17, 1982. Prayers will be offered for our baby Michael.

**BIRTHDAYS** - Delores M. Wagner, Charlotte Voshell, Bessie Mae Martin, Doug Jarrell, William E. Thompson, John Black, Pat Everett, Helen O. Thompson, Harvey Hendricks, Jill Burton, Danny Haines, Jr., Ben W. Potter, Lea Anne Leitner.

**ANNIVERSARY** - Mr. and Mrs. Ronnie Voshell, Mr. and Mrs. David Butler, Mr. and Mrs. Malachi Stevens, Mr. and Mrs. Bud Keough, Mr. and Mrs. Lester O. Biddle, Mr. and Mrs. Ray Stewart.

Mrs. Betty Sylvester and sisters Mrs. Ruth Ober and Mrs. Edith Ireland, all had a very interesting bus tour to Nashville, Tenn., visiting opera land,

On Wednesday, July 21, Donnie and Derek Lofland, Jim and Pete Retzlaff and Harold roto drove to Baltimore Memorial Stadium. There they saw the Baltimore Orioles defeat the California Angels 8 to 7. Everyone had a good time.

The next day, July 22, Donnie celebrated his birthday with family and friends.

The Rev. and Mrs. William A. Davis and children of Cleveland, Tenn., spent the weekend with his parents, Mr. and Mrs. Allison Davis. Todd remained for a ten-day visit with his grandparents while his parents went to Kansas City, MO.

The Greenwood Lioness Club held their August meeting on Monday evening at the home of Lioness Pat Hatfield. The Lioness members are responsible for supplying workers at the counter for the Lions Club Barbeque. We worked on perfecting our schedule. Plans were discussed for a trip to Williamsburg Pottery for this fall. Call 349-5158 for further information if you are interested in reserving a seat.

Before refreshments were served the Club presented their president, Lioness Bonnie Maloney with an auto seat for the expected baby.

On Wednesday, July 21, Donnie and Derek Lofland, Jim and Pete Retzlaff and Harold roto drove to Baltimore Memorial Stadium. There they saw the Baltimore Orioles defeat the California Angels 8 to 7. Everyone had a good time.

The next day, July 22, Donnie celebrated his birthday with family and friends.

The Rev. and Mrs. William A. Davis and children of Cleveland, Tenn., spent the weekend with his parents, Mr. and Mrs. Allison Davis. Todd remained for a ten-day visit with his grandparents while his parents went to Kansas City, MO.

The Greenwood Lioness Club held their August meeting on Monday evening at the home of Lioness Pat Hatfield. The Lioness members are responsible for supplying workers at the counter for the Lions Club Barbeque. We worked on perfecting our schedule. Plans were discussed for a trip to Williamsburg Pottery for this fall. Call 349-5158 for further information if you are interested in reserving a seat.

Before refreshments were served the Club presented their president, Lioness Bonnie Maloney with an auto seat for the expected baby.

On Wednesday, July 21, Donnie and Derek Lofland, Jim and Pete Retzlaff and Harold roto drove to Baltimore Memorial Stadium. There they saw the Baltimore Orioles defeat the California Angels 8 to 7. Everyone had a good time.

The next day, July 22, Donnie celebrated his birthday with family and friends.

The Rev. and Mrs. William A. Davis and children of Cleveland, Tenn., spent the weekend with his parents, Mr. and Mrs. Allison Davis. Todd remained for a ten-day visit with his grandparents while his parents went to Kansas City, MO.

The Greenwood Lioness Club held their August meeting on Monday evening at the home of Lioness Pat Hatfield. The Lioness members are responsible for supplying workers at the counter for the Lions Club Barbeque. We worked on perfecting our schedule. Plans were discussed for a trip to Williamsburg Pottery for this fall. Call 349-5158 for further information if you are interested in reserving a seat.

Before refreshments were served the Club presented their president, Lioness Bonnie Maloney with an auto seat for the expected baby.

On Wednesday, July 21, Donnie and Derek Lofland, Jim and Pete Retzlaff and Harold roto drove to Baltimore Memorial Stadium. There they saw the Baltimore Orioles defeat the California Angels 8 to 7. Everyone had a good time.

The next day, July 22, Donnie celebrated his birthday with family and friends.

The Rev. and Mrs. William A. Davis and children of Cleveland, Tenn., spent the weekend with his parents, Mr. and Mrs. Allison Davis. Todd remained for a ten-day visit with his grandparents while his parents went to Kansas City, MO.

The Greenwood Lioness Club held their August meeting on Monday evening at the home of Lioness Pat Hatfield. The Lioness members are responsible for supplying workers at the counter for the Lions Club Barbeque. We worked on perfecting our schedule. Plans were discussed for a trip to Williamsburg Pottery for this fall. Call 349-5158 for further information if you are interested in reserving a seat.

Before refreshments were served the Club presented their president, Lioness Bonnie Maloney with an auto seat for the expected baby.

On Wednesday, July 21, Donnie and Derek Lofland, Jim and Pete Retzlaff and Harold roto drove to Baltimore Memorial Stadium. There they saw the Baltimore Orioles defeat the California Angels 8 to 7. Everyone had a good time.

The next day, July 22, Donnie celebrated his birthday with family and friends.

The Rev. and Mrs. William A. Davis and children of Cleveland, Tenn., spent the weekend with his parents, Mr. and Mrs. Allison Davis. Todd remained for a ten-day visit with his grandparents while his parents went to Kansas City, MO.

The Greenwood Lioness Club held their August meeting on Monday evening at the home of Lioness Pat Hatfield. The Lioness members are responsible for supplying workers at the counter for the Lions Club Barbeque. We worked on perfecting our schedule. Plans were discussed for a trip to Williamsburg Pottery for this fall. Call 349-5158 for further information if you are interested in reserving a seat.

Before refreshments were served the Club presented their president, Lioness Bonnie Maloney with an auto seat for the expected baby.

On Wednesday, July 21, Donnie and Derek Lofland, Jim and Pete Retzlaff and Harold roto drove to Baltimore Memorial Stadium. There they saw the Baltimore Orioles defeat the California Angels 8 to 7. Everyone had a good time.

The next day, July 22, Donnie celebrated his birthday with family and friends.

The Rev. and Mrs. William A. Davis and children of Cleveland, Tenn., spent the weekend with his parents, Mr. and Mrs. Allison Davis. Todd remained for a ten-day visit with his grandparents while his parents went to Kansas City, MO.

The Greenwood Lioness Club held their August meeting on Monday evening at the home of Lioness Pat Hatfield. The Lioness members are responsible for supplying workers at the counter for the Lions Club Barbeque. We worked on perfecting our schedule. Plans were discussed for a trip to Williamsburg Pottery for this fall. Call 349-5158 for further information if you are interested in reserving a seat.

Calvary Wesleyan Church News

The Mid-Week Bible Study will be conducted Wednesday evening at 7:00. The study will be from the Book of James, Chapter 5, with Pastor Miller leading the study.

Vienna, VA on Wednesday and Thursday evenings, September 1 and 2. The seminars will be open to all interested people and will start each evening at 7:00. Rev. Ahleman serves as a Pastor and will successfully use the Undershepherd program.

Happy Birthday greetings this week to Mrs. Florence Wells, Mrs. Lula Mae Hatfield, and Mrs. Eunice Brown. The Church-Wide Picnic will be held this Saturday, Aug. 21, at the Wesleyan Camp Grounds near Denton, MD.

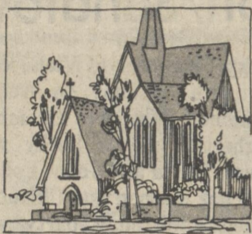
Harrington Baptist Church

Wednesday, 7 p.m. - Bible Study and Prayer. Sunday, 8 a.m. - Men's breakfast with incoming Brotherhood Director as special speaker. All men and boys are welcome.

"That ye might walk worthy of the Lord unto all pleasing, being fruitful in every good work and increasing in the knowledge of God." Colossians 1:10. Have you ever considered the disappointment God must feel when the lives of his people fail to yield a fruitful harvest?

St. Paul's Preschool Registration

St. Paul's Preschool, Greensboro, is pleased to announce official registration for the coming school year. Registration closes on September 12. Forms may be secured from Mrs. Mert Riddleberger, at 482-8903.



Reformation Lutheran Church

An Old Fashioned Church Picnic will be held on August 29 at Killen's Pond State Park starting with a 9:30 a.m. Worship. Informal - Hymns - Prayer. Pavilion seating, meat and drinks provided.

Obituaries

STEVEN D. LAYTON

Steven D. Layton, 16, of near Harrington, died of hepatitis Wednesday, August 11, 1982, in the Delaware Division. He had been ill since last month. Mr. Layton would have entered the 10th grade in September at Lake Forest High School in Felton.

EDGAR R. TUCKER

Edgar R. Tucker, 83, of 115 Commerce St., Harrington, died of leukemia Tuesday, August 10, 1982, in the Delaware Division. Mr. Tucker retired in 1963 from the Railway Express Agency. He was a member of Temple Lodge 9, AF&AM, of Milford.

RICHARD J. DAVIS

MILFORD - Richard J. Davis, 58, of R.D. 3, Milford, died Saturday, August 14, 1982, in Milford Memorial Hospital of an apparent heart attack. Mr. Davis was a self-employed carpenter. He is survived by his wife, Marie T. Davis; his mother, Mable B. Davis of Milford; four brothers, George B. Davis, Russell W. Davis, Gordon T. Davis and Robert J. Davis, all of Milford; and two sisters, Louise D. Webb and Marian E. VanVorst, both of Milford.

RAYMOND B. NICHOLS SR.

Raymond B. Nichols, 51, of near Greenwood, died Saturday, August 14, 1982, in the Milford Memorial Hospital of a heart attack. Mr. Nichols was a self-employed nurseryman. He is survived by his wife, Laura J.; a son, Raymond B. Jr. of Seaford; a daughter, Sharon Lee Reed, of Goose Creek, S.C.; a brother, Clarence of Felton; nine sisters, Nettie Bickling of Trainer, PA, Lillian Bail, of Maryland, MD, Blanche Steele, of Frederica, Evelyn Bickling and Ethel Patrick, both of Bethel, Thelma Messick of Wilmington, Doris Jenkins and Edna Wright, both of Harrington, and Ruth Werner of Riegely MD and four grandchildren.

JOSEPHINE C. POTZER

Josephine C. Potzer, 49, of 149 Mitscher Road, Dover, died of cancer Tuesday, August 10, 1982 in Kent General Hospital, Dover. She is survived by three sons, Douglas Patterson, James Cox Jr. and Charles Potzer of Dover; a daughter, Kimberly Cole of Dover; five brothers, Charles Patterson and Harry Patterson, Jr. both of Woodside, Herman Patterson of Hartly and Willard and Nick Patterson, both of Dover, five sisters, Mary Henderson and Bertha Donze, both of Dover, Jean Golt of Smyrna, Quincy Fiedler of Woodside and Lillian Steele of Downs Chapel and three grandchildren.

ANNA ELIZABETH NERO

Anna Elizabeth Coladonato Nero, 64, of near Kings Church, Laurel, died Sunday, August 15, 1982, at home of cancer. She was a member of the Holy Redeemer Catholic Church, Delmar. She is survived by her husband, Antonio V.; four sons, Antonio V. Jr. of Berkeley, Calif., R. Theodore of Taos, N.M., Eugene, of Pharr, Texas, and Daniel J. of Sicklerville, N.J.; a daughter, nnette Nero of Salisbury, MD; five brothers, Nick Coladonato of Boothwyn, PA, George Coladonato of Laurel, Sylvester and Harlan Coladonato, both of Plant City, Fla., and Victor Coladonato, of Greenwood; two sisters, Mary Orpello of Linwood, PA and Virginia McDermott of Marcus Hook, PA and three grandchildren. Mass of Christian Burial was offered Tuesday afternoon at 2 at the Holy Redeemer Catholic Church, East Chestnut St., Delmar, MD.

MARTHA COOPER

Martha Cooper, 89, of near Felton, died Sunday, August 15, 1982 of pneumonia in the Milford Memorial Hospital. Mrs. Cooper was a member of Manship United Methodist Church near Felton for many years. Her husband, William S., died in 1975. She is survived by a daughter, Martha Johnson, with whom she lived; four grandchildren and five great-grandchildren.

ARLIE B. OUTTEN

Arlie B. Outten, 78, of near Ocean View, died Saturday, August 14, 1982 in Beebe Hospital, Lewes, of a heart attack. Mr. Outten was a retired farmer, and was once employed by the Bancroft Corp. in Wilmington. His wife, Thelma L. died in 1975. He is survived by a son, James A. Outten of Wilmington; a daughter, Mary Florence Schweitzer, of Dover; two brothers, Louis of Delmar and George of Baltimore; eight grandchildren and nine great-grandchildren.

EDNA L. McCULLOUGH

Edna L. McCullough, 89, of Franklin Street, Milford, died Sunday, August 15, 1982, in Milford Memorial Hospital. Mrs. McCullough worked for many years as a foreman at the Mulholland Spoon Mill in Milford. In 1911, she was part of a small group that formed what is now the Calvary United Methodist Church of Milford, and was the last surviving charter member of the church. Her husband, Frank W. died in 1972. She is survived by a son, Roy W. of Lincoln; five daughters, Martha Pretzman, Betty Cohen and Charlotte L. Wheelock, all of Milford, Pearl E. Boteler of Largo, Fla., and Dolores L. Kalious of Lincoln; 22 grandchildren and 42 great-grandchildren.

CLARA T. WILLIAMS

MILFORD - Clara T. Williams, 93, of Marshall St., Milford, died Saturday, August 14, 1982 in Milford Memorial Hospital after a long illness. Her husband, William D. Williams died in 1974. She is survived by two sons, Richard E. Williams of Lincoln and George S. Williams of Milford; one brother, William B. Passwaters of Lincoln; one sister, Anna Orvis of Dover; one grandson and one great granddaughter. Services were 11 a.m. Tuesday at the Lofland Funeral Home, 219 S. Walnut St., Milford, where friends called Monday evening from 7 to 9.

Area Church News - Courtesy of the following sponsors:

Grid of advertisements for various businesses including furniture, real estate, insurance, and food services. Includes logos for Callaway Furniture, Farrow Realty, L & W Agency, and others.

Advertisement for 'Denizens of the Desert?' featuring a photo of a camel and text about a fundraiser for the Delaware Foundation for Retarded Children.

Church Directory listing various churches and their services, including Asbury United Methodist, St. John's United Methodist, and others.

# Blue wins 27th annual All Star contest

For Gold supporters, it was a promising day that failed to live up to its promise until the last three or four minutes of the 27th Annual Blue/Gold All Star Football game. Then the action got hot, but the clock ran out leaving the Gold on the short end of a 10-6 score.

Despite the loss, the performance of five players from the Lake Forest varsity football squad which took the 1981 Henlopen Conference Championship gave local fans something to be proud of. Dale Benson, Kevin Smith, Billy Scott, Gus Teague and LaMont Robinson represented Lake Forest in the Gold All Star team.

Dale Benson came away from Saturday's contest with the satisfaction of helping shatter a record that has stood since the first All Star Game in 1956. Late in the 4th quarter, Benson took a pass from quarterback Rodney Workman (Sussex Central) and raced from midfield to the Blue 1 yard line (or less) where he was finally hauled down by William Penn's Joe Burton (who just

happens to be the state 400 meter track champ). The Workman-Benson pass play combo, which covered 88 yards, demolished the 75 yard mark set in 1956 by Ray Ryan and Bill Nolan of William Penn. It also set up Gold's only score of the day, a TD from the one yard line by Keith Wright of Newark just seconds later.

In the closing moments of the game it was Benson along with teammate Kevin Smith who provided the thriller that breathed a last few moments of life and hope into the Gold game. With 38 seconds remaining, Benson nabbed a lateral pass from Workman and hurled it 56 yards to Kevin Smith who grabbed it just within bounds.

The Workman-Benson-Smith play brought Gold hopes to life. But there were no timeouts left, and the game ended two plays later with Benson, another pass in arm, racing for the sidelines, but failing to beat the clock.

Lake Forest's Billy Scott contributed 30 of the Gold's meager 42 yards gained

in rushing. Scott is an agile runner who went for 98 yards in one 1981 season game for the Spartans.

But for the most part, Scott Benson, Smith and the whole Gold offensive unit got very little chance to run, pass or do anything else. The Blue offense, after an exchange of fumbles and a couple of penalty calls that seemed to put a halt to Gold's early momentum, dominated the game. The fellows really under the gun were those in the defensive unit which spent most of the game on the field. That unit included Gus Teague and LaMont Robinson who put in credible performances as they represented Lake Forest.

Blue's winning ten points came from quarterback Scott Black of Delcastle who masterminded the 79 yard drive that landed him over the goal line in a final one yard run to give his team a TD early in the second quarter. Gary Scott of Friends successfully executed the kick to make it 7-0. In the fourth

quarter it was Gary Scott again who kicked the field goal for Blue's final score.

Scott Black received the award as the game's outstanding offensive player. Danny Candelora of Dickinson was named outstanding defensive player.

The Gold team was led by Lake Forest's Jim Fleming who was head coach. He was assisted by Ron Dickerson of Seaford and Bill Falasco of Lake Forest. Also on board from Lake Forest were Chester Scott as an assistant, Brian Gladden - Gold team manager, and Scott Fleming.

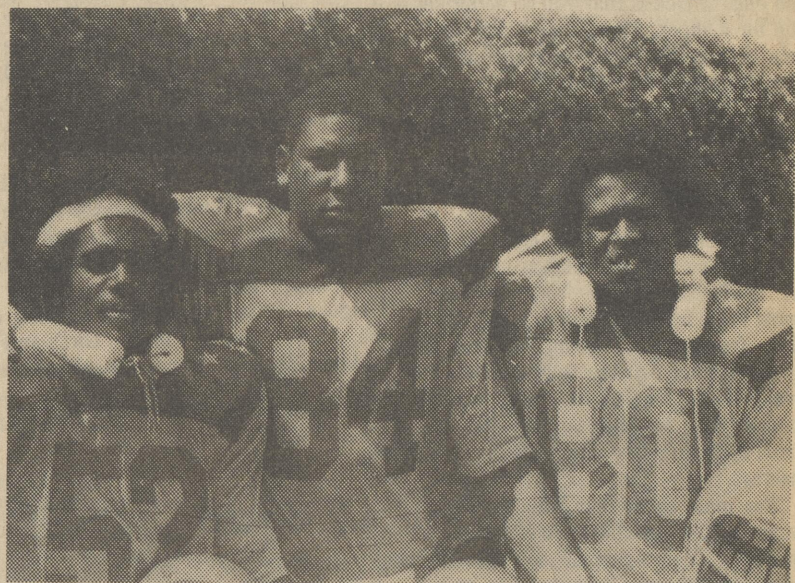
The Blue/Gold All Star contest is played annually to benefit the state's retarded citizens.

The record in the contests now stands at 16 Blue wins, 9 Gold victories and 2 ties. This year's game was played before a crowd of 8,430 - a figure which did not approach the record 13,784 set in 1971.

Funds raised in the annual effort up through 1981 stood at \$1,423,653.



**BUDDIES** - That's what the Blue/Gold All Star game is all about. The players go into the game under the banner "We play that they may learn". Funds raised benefit the Delaware Foundation for Retarded Children - as a part of the All Star program, players are matched with an All-Star buddy. Kevin Smith, right, shares a pre-game moment with All Star buddy Alphonzo Smith. Kevin, from Lake Forest, made a spectacular catch during the closing moments of the game.



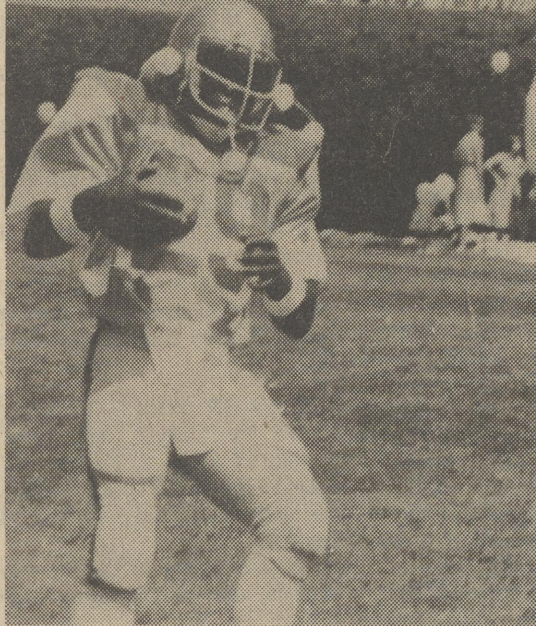
Gus Teague, 52, Dale Benson, 84, and LaMont Robinson, 80, looked tough before Saturday's All-Star game. Teague and Robinson were a part of the Gold defense that was kept on the field by a dominant Blue offense. Benson got his name in the All-Star record book in the contest's closing minutes.



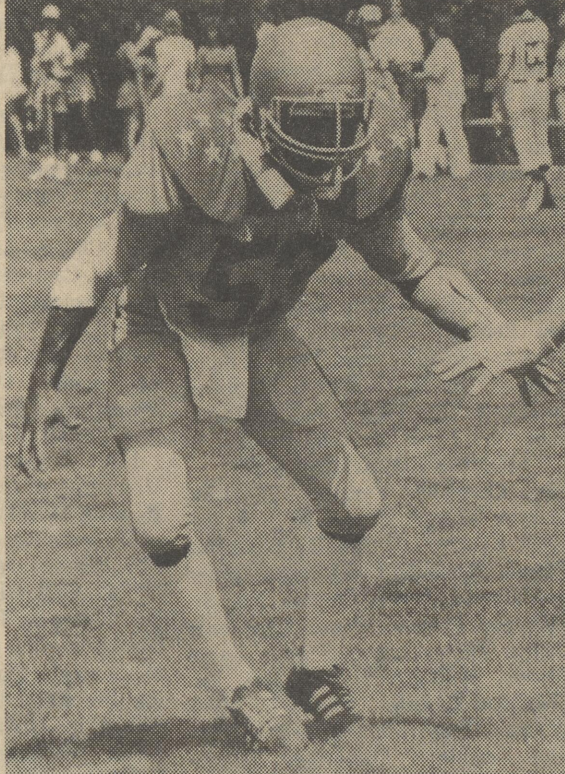
Bill Falasco was a Gold assistant coach.



Gold head coach Jim Fleming deliberates.



Billy Scott carried the ball for 30 of the Gold team's 42 yards rushing.



Gus Teague, 52, and teammate, LaMont Robinson [not shown] were out in the hot sun for most of Saturday's Blue/Gold game.

## Cross country team slates fun run picnic

All former Harrington High and Lake Forest High Cross-Country runners are urged to get in shape and participate in an informal fun-run with the 1982 Lake Forest team.

The run will be an informal affair, over three miles, with no score taken and no publicity given afterwards about the event. In effect, it is just an opportunity for former and current runners to get together, get to know each other and enjoy a picnic, after the workout.

The date is Sept. 11, 10:30 a.m. at Killen's Pond State Park. Both sides are invited.

These athletes are all part of that great winning tradition, which has seen winning seasons every autumn, in cross-country, since the sport was started here, more than a quarter of a century ago.

## Deer hunter qualification testing

Personnel at Bombay Hook National Wildlife Refuge announced today that the requirement that all shotgun and muzzleloader deer hunters hunting within the Bombay Hook Refuge possess a valid hunter qualification card has been suspended for the 1982 season. Reinstatement of the qualification requirement is expected for the 1983 season.

The qualification requirement for archery hunters at Bombay Hook and all deer hunters, regardless of weapon, at Prime Hook remains in effect for the 1982 season. Archery qualification tests will be administered on August 14 and 21 (10 a.m. - 2 p.m.) at Bombay Hook, and muzzleloader, shotgun and archery tests will be given on August 28th, (9 a.m. - 3 p.m.) at Broadkill Sportsmen's Club.

## Lake Forest athletic physicals given

Athletic Physicals for all sports at Lake Forest High School, grades 9 thru 12, will be given at the High School on Thursday, August 19th. Part I, preliminary screening, will be from 8:00 a.m. until 2:00 p.m. Students must have the PINK EMERGENCY FORM and the PHYSICAL/PARENT PERMISSION FORM (Parts A thru E) completed and signed prior to the preliminary screening. Forms are available at the High School office. The physician will be at the High School at 6:30 p.m. on the 19th. Cost for the physical is \$4.00.

**HARRINGTON AREA**

- South of Harrington - Lovely 3 bedroom rancher excellent condition - central air, extra kitchen cabinet, central vacuum. \$59,500. R-402.
- Harrington Ave. - 3 bedroom, newly renovated inside. Gas heat, woodstove included. Price reduced \$29,900. R-367.
- Delaware Ave. - 2 bedrooms, woodstove to heat house, blown insulation in attic. \$26,900. R-407.
- Residential building lot, east of highway behind Watkins Truck Sales. \$6500. L219

Mispillion St. - 3 BR, 2 story frame, new kitchen, family room, fenced back yard - 2 sheds, 2-car garage, priced to sell. \$32,000. R433.

**ERA** **Harrington Realty, Inc.**  
736 N. DuPont Hwy.  
Dover, DE 19901  
302-736-0800

**Parce Claire**  
ANNOUNCES  
**Special thru August**  
**2 HAIRCUTS 4 PRICE OF 1!**  
Reg. \$8.00 for 1 **NOW \$8.00 for 2**  
**PERMANENT - Reg. \$35.00. NOW \$27.50**  
All Work Done By Experienced Stylists  
Full Service Salon Open Six Days A Week!  
**APPOINTMENT NOT ALWAYS NECESSARY.**  
Milford Shopping Center **422-5210**

**FARROW REALTY**  
17 Commerce Street  
Harrington, Del. 19952  
Office [302] 398-3455  
**HARRY G. FARROW, JR.**  
BROKER  
Home [302] 398-3250

**WRECKER SERVICE**  
FREE ESTIMATES  
GLASS INSTALLED  
FRONT END ALIGNMENT  
**Danny Roe and Sons**  
AUTO BODY REPAIR  
TELEPHONE  
422-7567  
N. Walnut St. & 113  
Milford, Delaware 9-8

**Cavallo's Restaurant**  
398-4656  
The only restaurant of this kind between Dover and Seaford. Steaks - Seafood - Italian dinners. Our food is prepared on the premises from fresh ingredients.....A commitment to quality at moderate prices.  
Open - Wed. thru Sat. 4:00 - 9:00 p.m.  
Sunday 1:00 - 9:00 p.m.  
Located on Rt. 13 Northbound just past Harrington traffic light

**Chick's**  
We bring out the West as you  
Rt. 13 Harrington  
Across from the fairgrounds  
Open 7 days a week  
398-4650, 8-11

**THE FIRST NATIONAL BANK**  
Good Luck!  
Two Locations -  
Harrington - 398-3232  
Canterbury - 284-3201

**BINGO** Every Sunday Night  
7:30 P.M. Harrington Fire House  
Mechanic Street 398-8931  
Early Bird Games - \$50  
Cash Prizes \$15-\$50  
Free Admission  
\$200 Jack Pot

**BIRTH LIST**  
BIRTH LIST 8-8-82  
Nelson & Maria Alston, Bridgeville, girl  
8-10-82  
Ronald & Lisa Williamson, Laurel, girl  
David & Karen Camp, Milford, twin boys  
Earl & Iris Downing, Milford, boy  
Bruce & Sharon Baker, Seaford, girl  
8-12-82  
David & Pamela Mills, boy  
Glenn & Linda Griffin, Seaford, boy

**Health Tip**  
OF THE WEEK  
**INFANT FOOT CARE**  
During an infant's first 12 months, rapid growth and softness of his feet provide a chance for foot ailments to develop. In bed, do not tuck the covers in, binding the baby's feet. Allow the child some time every day to kick without any sheets or covers on, in order of exercise and strengthen his legs and feet. By changing the baby's position during the day, excessive strain on his legs is eliminated. Lastly, don't carry the child on your hip or back - this forces his feet into an unnatural position.  
**Carl June HARRINGTON PHARMACY**  
HARRINGTON 398-8123  
Hospital Supplies and Equipment

**EASY HANDLING AUTO LOANS**  
Before you buy a new car, remember: the deal you get on the car is only as good as the deal you get on the money. So shop for the financing as carefully as you shop for the car.  
The best place to start your car shopping is here at the Bank of a Lifetime. We help folks like you into new cars with easy-handling auto loans that make a great car deal really great.  
**The First National Bank of Harrington**  
All the bank you'll ever need  
Harrington 398-3232  
Canterbury 284-3201  
**BANK OF A LIFETIME**

## Beware of summer lightning

Each year approximately 200 Americans are killed and some 550 more are injured because of lightning. If you know what to do, you can minimize the chances of being struck, says Dr. Laurence S. Kalstein, associate professor of geography and the Center for Climatic Research at the University of Delaware.

The greatest number of lightning strikes occur on the golf course, Dr. Kalstein says. "Lightning hoes in on any item that protrudes above the ground, and, on an open area such as a golf course, that item is you. By carrying a metal golf club and wearing shoes with cleats, you're making yourself a human lightning rod."

If a thunderstorm is approaching, leave an open area as rapidly as possible. "If you can't get to shelter, go to the lowest ground possible, such as a sand trap on a golf course," Dr. Kalstein stresses.

To avoid such circumstances pay attention to conditions that will tell you a thunderstorm is on its way, Dr. Kalstein says. These storms are marked by dark mammoth clouds, or clouds whose lower surface is in the form of pouches. In Delaware, an area of moderate thunderstorm activity, most come from the west or southwest. The frequency of thunderstorms is greatest from April to August. They're most likely to occur on a hot, humid, muggy day, he says, and most occur from 2-4 p.m. when the ground is at its hottest.

"The most dangerous time for lightning is just as the thunderstorm is starting. There's a rapid downdraft of air, and lightning frequency is at its greatest," Dr. Kalstein notes. "Hail, tornadoes or lightning most often occur at the front end of the storm."

thunderstorms occur when warm air at ground level rises very rapidly and then is cooled very rapidly as it rises, Dr. Kalstein says. Most summer thunderstorms generally wither and die rather rapidly, while spring thunderstorms maintain their intensity, he adds.

In a summer thunderstorm, the updraft and downdraft generally tend to interfere with one another. Air is rising, and the general movement of air in the upper atmosphere is not very strong in the summer. Water vapor in the air condenses into a liquid, the droplets grow and then drop out of the sky where the updraft is. "In other words," he explains, "the downdraft created by the movement of the falling

droplets interferes with the updraft, so the motion needed for the summer thunderstorms to form dies out, and the storm collapses onto itself."

In contrast, Dr. Kalstein says, the spring is a period when the jet stream, or upper atmospheric air flow, is very strong. The whole thunderstorm is basically tilted rather than completely vertical, as is the summer thunderstorm. In the spring, the updraft is generally found in a different place than the downdraft; the air moves up, the water vapor condenses and droplets fall in the front of the thunderstorm so the mechanism needed for maintaining the thunderstorm is much stronger.

Delawareans can be grateful for the influence of the Atlantic Ocean. "Thunderstorms in the Midwest are the most severe," Dr. Kalstein notes. "In Delaware, the ocean keeps temperature extremes more docile."

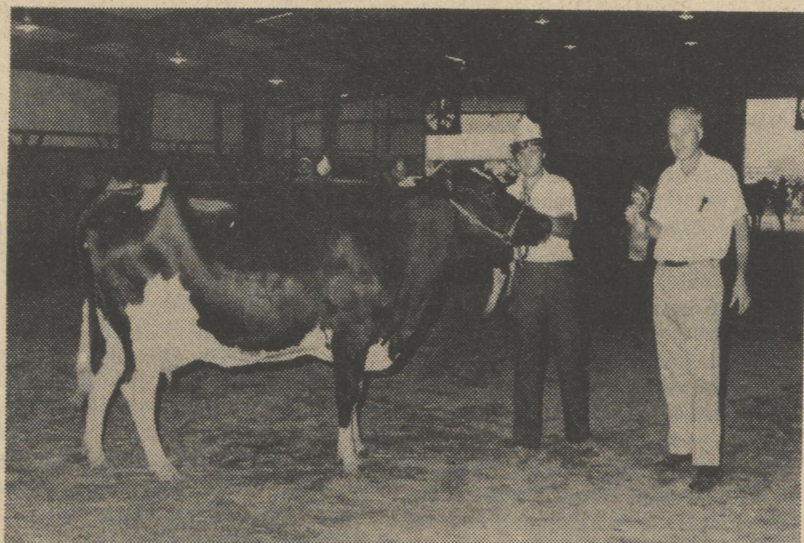
**AUGUST 26** - The Andrewville Ruritan Club will be holding a Donkey Baseball Game, August 26, 1982 at the Andrewville Ball Park. Game time 8:00 p.m. Advance tickets available from any member for \$2.00. Gate admission \$2.50. Children under 6 years free.

**AUGUST 28** - The Andrewville Ruritan Club will have their annual Ice Cream Festival at the ball park on August 28, 1982. Ball games of interest for all will begin at 4 p.m. Minor Leagues of Greenwood and Harrington, All Star Game, Umpire, Girl's and Cedarfield and Burrsville Ruritan Club.

## L.F. Board

[Continued from page 1] chologist), Robert Hawkins (assistant principal at North Elementary), Diane Detrick (special ed at North Elementary), Kathleen Latourette (special ed, North Elementary), Bethel Crockett, (special ed, East Elementary), Kathleen Hoover (gifted and talented, Mrs. Hoover has been with the district for two years), Lisa Shafer (special ed aide at the high school), Donna Allison (psychologist in the Kent-Sussex Preschool Diagnostic Center) and Juanita Melling (internal suspension aide at Chipman).

**Resignations** - Resignations were accepted from Joyce Simmons (special ed at North Elementary), Nancy Meadows (psychologist), Leah Biddle Melchiorre (second grade at East Elementary), Timothy Plocinik (social studies at Chipman) and K. Ryan Brown (special ed aide at the high school).



Mike Cain, of Harrington, DE accepts Grand Champion Female Holstein Award for his cow, Cain-View Elevation Rosie, from extension dairy specialist Dr. George Haelein.

## Fair dairy cattle winners

### OPEN SHOW

**Holstein**  
**Grand Champion Bull** - W. Lewis Phipps, Wilmington, DE; **Junior Champion Female** - Hayland Bootmaker Little Delle, owned by - Christal L. Gerardi, Harrington, DE; **Reserve Junior Champion Female** - Cain-View Valiant Rose, owned by - Cain-View Farm, Harrington, DE; **Senior Champion Female** - Cain-View Elevation Rosie, owned by - Cain-View Farm, Harrington, DE; **Reserve Senior Champion Female** - Dixiedel Tergermdel Westar, owned by - Same Dixon & Sons, Clayton, DE; **Grand Champion Female** - Cain-View Elevation Rosie, owned by - Cain-View Farm, Harrington, DE; **Reserve Grand Champion Female** - Dixiedel Tergermdel Westar, owned by - Sam Dixon & Sons, Clayton, DE; **Best Udder of All Shows** - Holstein, Cain-View Elevation Rosie - Cain-View Farm, Harrington, DE.

**JUNIOR HOLSTEIN SHOW**  
**Jr. Champion Female** - Dixiedel Marvex Zamar, owned by - Shawn Cook, Kenton, DE; **Res. Jr. Champion Female** - Dixiedel Creek Zesta, owned by - Wade Caldwell, Clayton, DE; **Sr. Champion Female** - Centerdell Attache Charm JKOLA, owned by - Laura Phipps, Wilmington, DE; **Res. Sr. Champion Female** - owned by Mark Phipps, Wilmington, DE; **Grand Champion Female** - Centerdell Attache Charm JKOLA, owned by - Laura Phipps, Wilmington, DE; **Res. Grand Champion Female** - owned by Mark Phipps, Wilmington, DE.

**OPEN GUERNSEY SHOW**  
**Grand Champion Bull** - Gordlines Orator Debbie, owned by Eric Joyner, Dover, DE; **Grand Champion Female** - Windale D, Milestone Velvet, owned by Susan Snyder, Dover, DE; **Res. Grand Champion** - Kalmar Daphnes Orator Debbie, owned by Eric Joyner, Dover, DE.

**OPEN AYRSHIRE SHOW**  
**Grand Champion Bull** - Del Acres Firechief, owned by Rockland Farm, Bear, DE; **Junior Champion Female** - Rockland Her's Crystal, owned by Leslie Moore, Bear, DE; **Res. Jr. Champion Female** - Rockland H. Virginia, owned by Rockland Farm, Bear, DE; **Senior Champion Female** - Piney Grove Gallant Angie, owned by Rockland Farm, Bear, DE; **Res. Senior Champion Female** - Piney Grove Gallant Saphira, owned by Rockland Farm, Bear, DE; **Grand Champion Female** - Piney Grove Gallant Angie, owned by Rockland Farm, Bear, DE; **Res. Grand Champion Female** - Piney Grove Gallant Saphira, owned by Rockland Farm, Bear, DE.

**JUNIOR AYRSHIRE SHOW**  
**Jr. Champion Female** - Windale D. Milestone Velvet, owned by Susan Snyder, Dover, DE; **Res. Jr. Champion Female** - Kalmar Shadwell Sadie, owned by Billy Baker, Felton, DE; **Sr. Champion Female** - Kalmar Daphnes

**Jr. Champion Female**, Rockland Robert's Cassie, owned by Leslie Moore, Bear, DE; **Sr. Champion Female** - Rockland Jack's Velvet, owned by Laurie Moore, Bear, DE; **Grand Champion Female** - Rockland Jack's Velvet, owned by Laurie Moore, Bear, DE; **Res. Grand Champion Female** - Ann-Ayr Fortune Tabitha, owned by Leslie Moore, Bear, DE.

**Choice King**, Barbara A. McClements, Dover, DE; **Junior Champion Female** - Papers Pending, owned by Warren N. Shorts, Centerville, MD; **Reserve Junior Champion Female** - Kelloggs Minnies Choice, owned by Warren N. Shorts, Centerville, MD; **Senior Champion Female** - U of D Corporal Cleo, owned by University of Delaware, Newark, DE; **Reserve Senior Champion Female** - U of D Choice Rozana, owned by University of Delaware, Newark, DE; **Grand Champion Female** - U of D Corporal Cleo, owned by University of Delaware, Newark, DE; **Reserve Grand Champion Female** - U of D Choice Rozana, owned by University of Delaware, Newark, DE.

**JUNIOR GUERNSEY SHOW**  
**Jr. Champion Female** - Shady Locust Rhodas Rachel, owned by Barbara A. McClements, Dover, DE; **Sr. Champion Female** - Lindenhof DM Zelia, owned by Barbara A. McClements, Dover, DE; **Grand Champion** - Lindenhof DM Zelia, owned by Barbara A. McClements, Dover, DE; **Res. Grand Champion** - Shady Locust Rhodas Rachel, owned by Barbara A. McClements, Dover, DE.

**OPEN JERSEY SHOW**  
**Grand Champion Bull** - Kalmar Cindys Gus, owned by Kalmar Farms, Harrington, DE; **Junior Champion Female** - SV Criterion Sherry, owned by Spring Valley Farm, Westminster, MD; **Res. Junior Champion Female** - Sleeper CB Babes Ina, owned by Heath's Jerseys, Westminster, MD; **Senior Champion Female** - SV Merry San Prudence, owned by Spring Valley Farm, Westminster, MD; **Res. Senior Champion Female** - Kalmar Generator Farrah, owned by Kalmar Farms, Harrington, DE; **Grand Champion Female** - SV Merry San Prudence, owned by Spring Valley Farm, Westminster, MD; **Res. Grand Champion Female** - Kalmar Generator Farrah, owned by Kalmar Farms, Harrington, DE.

**JUNIOR JERSEY SHOW**  
**Jr. Champion Female** - Windale D. Milestone Velvet, owned by Susan Snyder, Dover, DE; **Res. Jr. Champion Female** - Kalmar Shadwell Sadie, owned by Billy Baker, Felton, DE; **Sr. Champion Female** - Kalmar Daphnes

## Bits & Pieces

Harrington has 134 post office box holders, 812 residences receiving city delivery, and 1305 households on rural delivery for a total of 2,251. Felton has 454 post office box holders, and 1904 residences on rural deliver for a total of 2,358. In Frederica, the mail rolls include 1034 individual residences. This number reflects the combined 271 post office box holders and 763 rural delivery customers. The following totals have been reported for these area communities: Bridgeville - 1323 (626 city deliver, 323 post office boxes and 159 rural); Greenwood - 1327 (327 post office boxes and 1,000 rural), and Houston - 397 (146 post office boxes and 251 rural).

The 36th annual Delmarva Chicken Festival will be held in Milford, Delaware in June, 1983 with the Milford Chamber of Commerce serving as host. Site of the 1984 Festival will be

Salisbury, Maryland. Among the winning photographers whose pictures are featured in the recently released "Scenes of Delaware Issue" of the Delaware Conservationist are several from this area.

They include: **Glenn Courtney** of Frederica; **Sharilyn Hummel** and **Linda H. Niehorster** of Felton, and **Terry L. Shay**, co-owner of RPS Studio in Milford.

**Date Change** - The Harvest Dinner to be sponsored by the Greater Harrington Historical Society and scheduled for Oct. 2 will be changed to another date. Watch *The Harrington Journal* for information.

(We hope that "Bits & Pieces" will become a regular feature of *The Harrington Journal*. We invite our readers to call in with contributions or tips that might be of general interest. Call us at 398-3206 or 398-3752.)

## -Armed Services

DEPARTMENT OF THE NAVY - Navy Chief Gunner's Mate Charles E. Orvis, son of Isaac B. and Edna M. Orvis of Box 47, Magnolia, DE recently returned from a deployment to the Western Pacific and Indian Ocean.

He is a crewmember aboard the aircraft carrier USS Constellation, homeported in San Diego.

During the seven month deployment, his ship participated in various training exercises with other 7th Fleet units and those of allied nations.

Port visits were made to Kenya, Australia, Singapore, the Philippines and Hawaii.

The Constellation is 1,046 feet long and normally carries a crew of 2,800 plus an additional 2,150 assigned to the carrier air wing.

DEPARTMENT OF NAVY - Marine Lance Cpl. Paul J. McQuaide III, son of Betty L. Bishop of Route 1, Box 144 H, Magnolia, DE has been promoted to his present rank while serving with 7th Marines, 1st Marine Division, Camp Pendleton, Calif.

ARMY/AIR FORCE HOMETOWN NEWS - Spec. 4 Eric P. Burris, son of Ruth E. Burris of Magnolia, DE has been decorated with the U.S. Army Commendation Medal at Fort Bragg, N.C.

The Army Commendation Medal is awarded to those individuals who demonstrate outstanding achievement or meritorious service in the performance of their duties on behalf of the Army.

Burris, now with the 96th Civil Affairs Battalion, is a 1980 graduate of Caesar Rodney High School, Camden, DE.

ARMY/AIR FORCE HOMETOWN NEWS - Pvt. Tony R. Cain, son of Paul F. Cain of Route 2, Felton, DE and Rosealie Hobbs of Route 2 Hartley, DE has arrived for duty at Fort Hood, Texas.

Cain is assigned to the 6th Cavalry Brigade, and was previously stationed at Fort Lee, VA.

ARMY/AIR FORCE HOMETOWN NEWS - Sgt. Dalton B. Pratt Jr., son of Dalton B. and Gabb Pratt of Route 2, Greenwood, DE has been decorated with the U.S. Air Force Commendation Medal at Carswell A.F. Base, Texas. The Air Force Commendation Medal is awarded to those individuals who demonstrate outstanding achievement or meritorious service in the performance of their duties on behalf of the Air Force.

Pratt is an aerial gunner with the 9th Bombardment Squadron.

DEPARTMENT OF THE NAVY - Marine Cpl. Larry D. Savage, son of Wyoming W. Ross of 404 East St., Milford, DE and Eunice L. Abbott of 900 Easter, Seaford, Del., and whose wife, Cynthia, is the daughter of Dale and Cleo Stanley of Route 1, Box 209A, Georgetown, DE has been awarded a Letter of Appreciation.

He is a member of Detachment "A", 2nd Force Service Support Group Marine Corps Air Station, Cherry Point, N.C.

He is cited for superior performance of during exercise "AVILEX 2-82," a training exercise designed to evaluate the combat readiness of the 2nd Marine Aircraft Wing.

A Letter of Appreciation is an official recognition of an individual's superior job performance, and is presented during formal ceremonies.

ARMY/AIR FORCE HOMETOWN NEWS - Airman Anthony B. Benson, son of Alice A. Fitchett of 2021 Concorn Road, Seaford, Del., and grandson of George Benson of Route 4, Seaford, has been assigned to Keesler Air Force Base, Miss., after completing Air Force basic training.

During the six weeks at Lackland Air Force Base, Texas, the airman studied the Air Force mission, organization and customs and received special training in human relations.

## Southern States

[Continued from page 1] Farm Home Advisory Committee were: Mrs. John Curtis, Jr. of Harrington and Mrs. Ernest Vogl Jr. of Harrington.

Mrs. Leroy Betts of Harrington was chosen as chairman of the Farm Home Advisory Committee and Mrs. David Hruppa of Felton was named secretary.

David Winkler of Felton was selected as a delegate to represent the local membership at the Southern States Cooperative's 59th Annual Stockholders Meeting to be held in November. Leroy Betts of Harrington was named alternate.

Les Pryor of Smyrna, Del., a member of Southern States Cooperative's regional staff, reported on the overall Southern States operations for the 1981-82 fiscal year. This report also included a slide-tape presentation entitled "Cooperation-Strategy for Success," which pointed out that cooperation among farmers through their cooperatives has been a strategy for success for American agriculture in the past and the present and promising to be an even more clearly defined strategy for success in the future.

The report on local operations and services rendered to farmer members in the community was given by Roger Hudson, manager of Peck Bros. Farm Supply. His report included the use of a number of color slides showing the co-op's present service as well as

In addition, airmen who complete basic training earn credits toward an associate degree in applied science through the Community College of the Air Force.

The airman will now receive specialized instruction in the administration field.

His wife, Carla, is the daughter of Mr. and Mrs. Phillip Davis of 301 First St., Bridgeville, DE.

He is a 1977 graduate of Seaford Senior High School. ARMY/AIR FORCE HOMETOWN NEWS - Pvt. Stephen D. Horsley, son of James D. Horsley of Eden, N.C., and Muriel Horsley of Denton, MD, has completed one station unit training (OSUT) at the U.S. Army Infantry School, Fort Benning, GA.

OSUT is a 12-week period which combines basic combat training and advanced individual training.

The training included weapons qualifications, squad tactics, patrolling, landmine warfare, field communications and combat operations. Completion of this course qualifies the soldier as a light-weapons infantryman and as an indirect-fire crewman.

Soldiers were taught to perform any of the duties in a rifle or mortar squad.

ARMY/AIR FORCE HOMETOWN NEWS - Air Force Reserve Airman Jose A. Dancel, son of Jose A. Dancel Sr. of Magnolia, Del., and Mary L. Dancel of 234 Kentwood Mobile Estates, Dover, DE has been assigned to Sheppard Air Force Base, Texas, after completing Air Force basic training.

During the six weeks at Lackland Air Force Base, Texas, the airman studied the Air Force mission, organization and customs and received special training in human relations.

In addition, airmen who complete basic training earn credits toward an associate degree in applied science thru the Community College of the Air Force.

The airman will now receive specialized instruction in the aircraft maintenance field.

Dancel is a 1980 graduate of Caesar Rodney High School, Camden, DE.

DEPARTMENT OF THE NAVY - Navy Seaman Apprentice Anthony B. Walker, son of Clotis E. Walker of 231 Redden Road, Bridgeville, DE and grandson of Virginia Marvel of 131 N. Market St., Seaford, DE recently returned from a deployment to the Western Pacific.

He is a crewmember aboard the amphibious transport dock ship USS Dubuque, homeported in San Diego.

During the six month deployment, his ship participated in several major training exercises including "Team Spirit 82", a joint exercise involving military forces from the United States and the Republic of Korea. More than 160,000 personnel and 31 U.S. 7th Fleet ships were involved in the month-long exercise.

Port visits were made to Japan, Korea, Hong Kong and the Philippines.

The Dubuque is 570 feet long and carries a crew of 473. It can also accommodate 930 combat equipped Marines.

ARMY/AIR FORCE HOMETOWN NEWS - Airman John M. Tipton, son of Lester L. and Shirley Tipton of Route 2, Federalburg, Md., has been assigned to Keesler Air Force Base, Miss., after completing Air Force basic training.

During the six weeks at Lackland Air Force Base, Texas, the airman studied the Air Force mission, organization and customs and received special training in human relations.

In addition, airmen who complete basic training earn credits toward an associate degree in applied science through the Community College of the Air Force.

The airman will now receive specialized instruction in the communications-electronics systems field.

His wife, Donna, is the daughter of Mr. and Mrs. Cavalin C. Jones of Route 1, Denton, Md.

Tipton is a 73 graduate of North Dorchester High School, Hurlock, Md.

pictures of patron's farming operations.

There was also a special recognition ceremony for new board members, Farm Home Advisory Committee members, as well as those from these groups who were retiring. These included: Mrs. John Curtis, Sr., Mrs. Hyland Webb, Walter Winkler and John Curtis, Jr.

Among other highlights of the session was: Mrs. William G. Jester's presentation on the year's activities of the local Farm Home Advisory Committee. She presented the Share A Craft entries to the membership.

The Asbury Quartet, Jim Olson, Dale Jarrell, Keith Burgess and Matt Burgess provided entertainment for the enjoyment of all who were in attendance.



# Barry Beder Hypnosis Clinics

will help you. . .

**Lose Weight!**

✓ **SPECIAL WEIGHT CLINIC RETURN RATES**  
pay **ONLY \$15** each time you return.

**Stop Smoking!**

✓ **GUARANTEE: stop smoking IMMEDIATELY** without weight gain or tension, or return **FREE**

**BARRY BEDER HYPNOSIS CLINICS** have been used in conjunction with

- Michigan Blue Cross/Blue Shield • Ford Motor Company
- Lawrence General Hospital • Hunt Memorial Hospital
- Professional Air Traffic Controllers Organization • Tufts University

**DOVER**  
**SHERATON INN - TUESDAY, AUGUST 24**

**STOP SMOKING: \$35 - 7:00 P.M. WEIGHT LOST: \$25 - 8:30 P.M.**

Includes **FREE Hypnosis Cassette Tape**

**CALL TOLL FREE**  
**1-800-343-0224**  
 Used by the American Lung Association of Michigan

**RACEWEEK** is taking over!

The new *Dover Mall*  
 September 18, 1982 9 a.m. - 9 p.m.

See your favorite race cars on the spot!

Free Prizes!

Be sure to come say Hello!

Call 398-3206 to place your ad in our special publication covering this super special event and big CRC Chemical race on September 19.

**Farrow Realty**

REALTOR® 17 Commerce St. Harrington, DE  
 (302) 398-3455  
 Harry G. Farrow, Jr. Broker

**Harrington**

- Small two-story frame home. Needs work. \$7500.
- Two-story older home in well kept residential area. Aluminum siding and large city lot. \$15,000 or make offer.
- Two-story frame dwelling. 7 rooms, bath and a half. Asking \$15,000. Nice neighborhood.
- Large two-story dwelling in real good condition. 9 rooms, bath up and half bath down. Asking \$25,000.
- A two-unit frame dwelling separate entrances. High return on investment. Asking \$13,500.
- Large two-story frame dwelling containing two separate units. Garage on well shaded lot. Real good condition, high income, good rental investment. Asking \$35,000.



**CLASSIFIED RATES**  
 CLASSIFIED DISPLAY: \$1.50 per col. inch  
 LEGAL NOTICES: \$2.00 per col. inch  
 Deadline: Insertion & Cancellation Mon. 12 Noon  
 Mail to: The Harrington Journal, 19 Commerce St., Harrington, DE 19902  
 Phone: 398-3206

\$17\* for 25 words or less - 5\* each additional word.  
 The following ads can run FREE for up to FOUR WEEKS!!

- Household items under \$500
- Lost & Found
- Employment Wanted
- Garage Sales
- Giveaways
- Items to Trade
- Yard Sales

Phone - 398-3206



**CORRECTIONS**  
**READ YOUR AD THE FIRST DAY IT APPEARS!**  
 Any corrections to be made must be called in from 8 a.m. to 9 a.m., the day after your ad appears. One (1) extra insertion will be made at no charge for an error not the fault of an advertiser. The Harrington Journal WILL NOT be responsible for more than [1] incorrect insertion.

**AUTOS FOR SALE**  
 Cars \$200! Trucks \$150! Available at local govt sales. Call (refundable) 1-714-569-0241 ext. 5089 for directory that shows you how to purchase. 24 hrs. 3 T 8-25

**FOR SALE**  
 '68 Ford Fairlane 289, tuned up. Good body, runs good. Needs. Rebuilt transmiss. \$700, or best offer. Call 398-4343, ask for Drew. 1T 8-18

**SITUATION WANTED**  
**WILL BABY SIT** - Reliable and dependable teenager will baby sit in your home in Harrington area. References furnished upon request. Call 398-8061 any time. TFN

Will be a licensed day care sitter as of 9/82. Taking applications now. Reasonable rates. Hot meals served. Call 398-8153, after 5:30 p.m. 4T 8-25

**HELP WANTED** - Qualified person to work as a writer, advertising sales and newspaper delivery for RACEWEEK. Must be able to write clearly. Call Anne 398-3206. TFN

Responsible serious high school student to volunteer services in exchange for on the job training in office skills. Your chance to acquire on the job experience to help you when looking for full time job after graduation. Call 398-3752, speak to Anne. TFN

**WANTED** - Writer for news and social for Milford area, call Anne, *Harrington Journal*, 398-3206. TFN.

**WANTED** - Writer for Magnolia area for news and socials. Call Anne, *Harrington Journal*, 398-3206. TFN

**WANTED** - Reporter for Woodbridge School District. Call Anne, *Harrington Journal*, 398-3206. TFN

**MOBILE HOMES FOR SALE**  
 New 1982 14x70, 3 bedroom, furnished and set up on your lot, \$12,995. Don't pay more! Financing available. Kent Mobile Homes, 2170 No. duPont Hwy., Dover, DE. 674-8860. TFN

**FOR SALE**  
 A full line of W.T. Raleigh Co. Products available. Phone 422-5343. 4T, 9-8

**HELP WANTED** - Coaching positions, Varsity Football Assistant; 9th Grade Football Assistant; J.F. Soccer; Chipman Hockey. Beginning 1982-83 school year. Closing date is 8/24/82 at 4:00 p.m. Date of employment is 9-1-82. Apply to: Dr. Robert C. Sutton, Dir. of Per. Woodbridge School Dist., 120 Edgewood Ave., Bridgeville, DE 19933 302-337-8296 EOE. 1T 8-18

Special Education Facilitator at Woodbridge School Dist. Full cert. in the area of Spec. Ed. Salary based on st. & local sal. sched. Closing date is 8/24/82 at 4:00 p.m. Date of employment is 9-1-82. Apply to: Dr. Robert C. Sutton, Dir. of Per. Woodbridge School Dist., 120 Edgewood Ave., Bridgeville, DE 19933 302-337-8296 EOE. 1T 8-18

Dishwasher (Part time 3 hrs.) at Woodbridge Jr/Sr High School in Bridgeville. Working knowledge of gen. cleaning & caring of business kitchen required. 3 letters of reference required. Closing date is 8-24-82 at 4:00 p.m. Date of employment is 9-1-82. Apply to: Dr. Robert C. Sutton, Dir. of Per., Woodbridge School Dist., 120 Edgewood Ave., Bridgeville, DE 19933 302-337-8296 EOE. 1 T 8-18

**ATTENTION LANDLORDS** - List your rental properties with us. Qualified tenants waiting. We will screen applicants, prepare & execute lease, collect rent and furnish complete statement of your account monthly. Call 398-3455 Farrow Realty. TFN

**BUSINESS CARDS** - Raised lettering, most colored printing at no extra charge. Most logos and cuts no extra charge. Min. order, 500. Quality printing. Guaranteed. Harrington Journal. Stop in to see samples and prices. TFN

Quality printing. Letterheads, forms, envelopes, camera ready or custom. Competitive prices. *Harrington Journal*. 398-3752.

**LOST AND FOUND**  
**FOUND** - Female Siamese on Farmington-Harrington Road. Call 398-4305. 4T 9-8

**REWARD** for safe return of boy's bike, blue with gold handlebars and wheels. Stolen from Quillen's Market, August 4, 1982. Phone 398-4370. 4T 9-1

**CARD OF THANKS**  
 I would like to thank all friends and neighbors who have been so kind and thoughtful with the recent loss of my mother. I would especially like to thank Jerrie Outten for her love and care of my son, Jason, while we were away.  
 Sincerely,  
 Katherine A. Monroe and Family  
 1T, 8-18

**WANTED**  
 Small coal burning stove. Must be good condition. Day. 398-3752, eve, 398-4285. TFN

**FOR RENT**  
 3 1/2 bedroom two story duplex. Neat and clean. Ready to move in. Harrington in-town location. Heat, water, sewer & trash included in rent. Applications now being taken.  
**FARROW REALTY**  
 398-3455

**FOR RENT** - (1) Warehouse space (2) Office space. Do you want to go into business and can't afford high rents? See us and we will make you a deal you can't resist. Property located Hanley St., Harrington, DE. U.L. Harman, Inc. 302-492-3456, 301-482-6242. Ask for Edgar. 1T 8-18

**PUBLIC NOTICE**  
**PUBLIC AUCTION OF REAL ESTATE**  
 Saturday, Aug. 21, 1982 12:00 Noon  
 Location: 100 Center St., Harrington, Delaware. Parcel #1

ALL that certain lot, piece or parcel of land and premises situated in the City of Harrington, Misspillion Hundred, Kent County and State of Delaware on the North-east corner of Center Street and Harrington Avenue, and bounded as follows: on the North by a fifteen (15) foot alley, on the East by lands now or formerly of William S. McCabe, on the south by said Center Street, and on the west by said Harrington Avenue said lot, piece or parcel of land having a front on said Center Street of fifty (50) feet and extending back that width between parallel lines a distance of one hundred fifty (150) feet and containing seven thousand five hundred (7500) square feet of land, be the same more or less; and also

ALL of the right, title and interest of the said parties of the First part in the strip of land about eighteen (18) inches in width lying between the lands hereby conveyed and lands now or formerly of William S. McCabe, and extending from Center Street to the aforesaid alley, which strip of land is used for underground drainage and in common with the lands now or formerly of the said William S. McCabe.

This property is improved with a 6 room 1 1/2 bath brick home w/utility room, utility shed, enclosed porch and a 3 car garage, located on 100 Center St., Harrington, Delaware.

**LEGAL NOTICE**  
**SHERIFF'S SALE OF VALUABLE REAL ESTATE**  
 By virtue of a writ of Levari Facias, for the sale of land to me directed, will be exposed to public sale by way of Public Vendue at the front door of the Kent County Court House, Dover, Kent County, State of Delaware, on **THURSDAY, September 2nd, 1982 at 1:15 p.m.**

ALL those two certain lots, pieces, and parcels of land situate in South Murderkill Hundred, Kent County, State of Delaware, lying on the west side of County Road #251 leading north from the Felton-Sandtown road towards Petersburg, and being all of Lots Numbers 3 and 4 on a plot of lots of "Rudolph Hrupsa, Lots," surveyed by Harold E. Workman, L. S. dated June 23, 1973, and being more particularly bounded and described as follows, to wit:

**BEGINNING** at a point in the westerly right of way line of County Road #251, said point of beginning being the northeast corner of Lot #4 as herein described and the southeasterly corner of Lot #5; thence from said point and place of beginning and with the westerly line of County Road #251 South 3 degrees 45 minutes East, a distance of 200 feet to a point at a corner for Lot #3 and Lot #2; thence turning and running with line of Lot #2 South 81 degrees 15 minutes West, a distance of 313.68 feet to a point; thence turning and running with the westerly line of Lots Numbers 3 and 4, and with other lands of Rudolph Hrupsa North 17 degrees 29 minutes West, a distance of 202.34 feet to a point at a corner for lots herein described and Lot #5; thence turning and running with line of Lot #5 North 81 degrees 15 minutes East, a distance of 344.41 feet back to the point and place of beginning, and containing 1.511 acres of land, be the same more or less.

AND BEING the same lands and premises as conveyed unto George E. McDaniel and Catharine M. McDaniel, his wife by Deed of Michael A. Foster and Philip Giantz bearing even date herewith and about to be recorded in the Office of the Recorder of Deeds, in and for Kent County, State of Delaware.

Terms of SALE: 20% day of sale and the balance on October 4, 1982. Sale subject to confirmation by Superior Court and also subject to a 2% Delaware Realty Transfer Tax; 1% to be paid by Seller and 1% by the Purchaser.

Seized and taken in execution as the property of George E. McDaniel & Catharine M. McDaniel will be sold by Sheriff's Office  
 Dover, Delaware

**GEO. D. HILL, JR. SHERIFF**  
 ST. 8-25

**SHERIFF'S SALE OF VALUABLE REAL ESTATE**  
 By virtue of a writ of Levari Facias, for the sale of land to me directed, will be exposed to public sale by way of Public Vendue at the front door of the Kent County Court House, Dover, Kent County, State of Delaware, on **THURSDAY, Sept. 2, 1982 at 1:00 p.m.**

ALL that certain lot, piece or parcel of land situated in South Murderkill Hundred, Kent County, State of Delaware; being all of Lot #11 as laid out in the Ryan Farm Subdivision, lying on the south side of County Road #247 between County Road #246 and County Road #248; being bounded on the north by County Road #247, on the east by Lot #12, on the South by Lot #1-A, and on the west by Lot #10, and being more particularly described as follows, to-wit:

**Wilson's Auction Sales, Inc.**  
 Dave Wilson  
 Auctioneer and Sales Manager  
 422-3454 or 856-2110 2T, 8-18

**BEGINNING** at a point in the centerline of County Road #247 at a corner for this lot and for Lot #10; said point of beginning being North 80 degrees 3 minutes East and 900.15 feet from the intersection of the centerline of County Road #247 with the centerline of County Road #248; THENCE running from said point of beginning with the centerline of County Road #248 North 80 degrees 3 minutes East 150 feet to a corner for this lot and for Lot #12; THENCE running with Lot #12 South 9 degrees 57 minutes East 600 feet to a point in line of Lot #1-A; THENCE running with Lot #1-A South 80 degrees 3 minutes West 150 feet to a corner for this lot and for Lot #10; THENCE running with Lot #10 North 9 degrees 57 minutes West 600 feet to the place of beginning; and containing 2.07 acres of land, be the same more or less.

AND BEING the same lot, piece or parcel of land which was conveyed unto CARL YOUNG and ELEANOR YOUNG, his wife, by deed of PHILMANT PROPERTIES, LTD., a Delaware corporation, bearing date the 21st of December, A.D. 1977 and of record in the Office of the Recorder of Deeds, in and for Kent County, State of Delaware, in Deed Record Book D, Volume 32, Page 312.

Terms of SALE: 20% day of sale and the balance on October 4, 1982. Sale subject to confirmation by Superior Court and also subject to a 2% Delaware Realty Transfer Tax; 1% to be paid by Seller and 1% by the Purchaser.

Seized and taken in execution as the property of Carl Young & Eleanor Young will be sold by Sheriff's Office  
 Dover, Delaware

**The Weekly Crossword**

**across**

- JEWELERS MEASURE
- ENCLOSURES
- MARCH
- ATTIC
- HE WAS L
- NEGATIVE ADVERB
- SCANDINAVIAN
- ENGLISH COMPOSER
- ENG. RIVER
- SHE ITALIAN
- UNIVERSAL LANGUAGE
- OPENINGS
- PLURAL ENDING
- FLOWER PART
- STEP
- FOOT, COMING FROM
- INSURANCE GROUP
- PUBLIC RAILROAD COMP.
- SPORTS RING, PL.
- NICKNAME
- PHILIPPINE ISLAND
- NOTE
- BOY!
- KOREAN HOLIDAY
- SMEAR
- TRUE
- TSE FLY
- TOPS, TWO
- WORDS
- SNAILSH
- SAT
- CHALK BOARD
- FEAR

**down**

- CONNECTING TISSUE
- CONCUR
- SUN GOD
- EARTH-GER
- MIDWEST RIVER
- FELT
- FRUIT PL.
- PESTER
- OVER POETIC
- WEE PART
- GLARE
- TALENTED
- SEA
- SALLYARD
- SCOTTISH
- JOHN SCOTTS
- SEPARATED
- PATERS MATES
- ROLER
- DID PENANCE
- LOCATED
- POSITIVE ANSWER
- APPENDAGE
- ARMED
- PROVINCE ABBR.
- FOUNDATION
- WATER CON.
- TAMER INDIA
- THER
- PRICE
- COMPARATIVE SUFFIX

**Last Week's Solution**

1	2	3	4	5	6	7	8	9	10
11									
14			15	16				17	
18				19				20	
21				22				23	
25				26				27	
31								32	
33	34			35				36	
39				40				41	
43				44				45	
49								50	
52				53				54	
56								57	

**L & W AGENCY Insurance**  
 "Let A Single Call Do It All!"  
 COMPLETE INSURANCE PROTECTION SINCE 1932  
 [Other offices in Milford & Georgetown]  
 1154 S. Governor's Ave. Dover 674-3500 856-7828

**McKnatt Funeral Home**  
 YOUR PEACE OF MIND AND HEART OUR FIRST CONSIDERATION  
 50 Commerce St. HARRINGTON, DEL. 398-3228

**RAUGHLEY INSURANCE SERVICE**  
 HARRINGTON, DELAWARE  
 Tom Parsons  
 PHONE 398-3551

**CONSIGNMENT SALE**  
**ABSOLUTE AUCTION**  
 - OF -  
**Tractors & Farm Machinery & Industrial Equipment**  
 The Largest Annual Fall Auction on the Delmarva Peninsula  
**THURSDAY, AUGUST 26, 1982**  
 Starting 9 AM Sharp (Rain or Shine)  
 We expect to have a large assortment of Tractors • Tillage Tools • Harvesting Machines Trucks and Industrial Equipment.

**"CONSIGNMENT OPEN TO EVERYONE"**  
 If You Have Tractors or Machines to Sell... Plan to Consign Them Today. Consignments Will Be Received on Monday, Tuesday, and Wednesday, August 23, 24, & 25th, 8 AM to 4 PM. (No Machines Will Be Listed on Day Of Sale.)

Tractors will be sold at 1 PM (Sharp)  
 TERMS: Cash Day of Sale Lunch Will Be Served

Location 1/2 mile south Camden, DE, red light on U. S. 13 next to the Happy Hoe Garden Center.

South duPont Highway - U.S. 13  
 P. O. Box 531 • Dover, Delaware 19901  
 734-2871 - 734-7777 - 734-5848

"Complete Auctioneering Service Any Place On the Del-Mar-Va Peninsula"

**CRAWFORD J. CARROLL, AUCTIONEER**  
 P. O. Box 531 • Dover, Delaware 19901

Cook/Baker (Full time position 6 1/2 hrs.) at Woodbridge Elem. School in Greenwood. Working Knowledge of business kitchen, & exp. in cooking & baking required. 3 letters of reference required. Closing date is 8-24-82 at 4 p.m. Date of employment is 9-1-82. Apply to: Dr. Robert C. Sutton, Dir. of Per., Woodbridge School Dist., 120 Edgewood Ave., Bridgeville, DE 19933 302-337-8296 EOE. 1T 8-18

**SERVICES**  
 Life Time plastic water well. Call Ken Wood at Life Time Well Drilling, 301-479-0397. TFN

Poultry Growers Insurance coverage, including collapse, competitive rates for buildings, equipment, and all farm insurance. MARVEL AGENCY, Insurance, Milford, Del. 422-9626. TFN

Typesetting, layout & composition services. Small and large jobs. Professional results. Quality work. Harrington Journal. 398-3752. TFN

**TIDES AT BREAKWATER HARBOR**

AUG.	HIGH	LOW
19	9:26A 9:50P	3:19A 3:20P
20	10:17A 10:39P	4:07A 4:12P
21	11:06A 11:26P	4:53A 5:03P
22	11:55A 5:44P	5:36A 5:54P
23	0:13A 12:44P	6:21A 6:45P
24	1:03A 1:35P	7:06A 7:40P
25	1:54A 2:27P	7:53A 8:39P

This chart is adjusted for daylight savings time. AM time is shown by an A and PM time is indicated by a P. To determine the time of any location shown in the chart below, add or subtract the hours and the minutes as indicated.

**Delaware Bay Lighthouses**  
 Brandywine Shoal Light - High Tide +0:09, Low Tide +0:28; Fourteen Foot Bank Light - High Tide +0:16, Low Tide +0:49; Mash Mault Shoal Light - High Tide +0:28, Low Tide +1:08; Elbow of Cross Ledge Light - High Tide +0:40, Low Tide +1:21.  
**Delaware Bay, Western Shore**  
 Cape Henlopen - High Tide -0:05, Low Tide -0:05; Roosevelt Inlet - High Tide +0:09, Low Tide +0:13; Misspillion River Entrance - High Tide +0:33, Low Tide +1:00; Murderkill River Entrance - High Tide +0:56, Low Tide +1:32; St. Jones River Entrance - High Tide +0:57, Low Tide +1:33; Mahon River Entrance - High Tide +1:13, Low Tide +1:32; Leipsic River Entrance - High Tide +1:18, Low Tide +1:59; Leipsic, Leipsic River - High Tide +3:42, Low Tide +3:50.

**Sambo's Tavern**  
 NOW OPEN  
 THE ORIGINAL SAMBO'S TAVERN  
 Independently Owned - Established 1953  
 SERVED BASKET OYSTER • STEAMER BASKET  
 OUR FOOD IS PREPARED TO YOUR ORDER  
 STEAMED CRAB OYSTERS (IN SHELL) CLAMS PIZZA  
 EVERYTHING SERVED SAMBO'S WAY -  
 OPEN MON. thru SAT. - 9 A.M. til 12:30 A.M.  
 Kitchen Open 11 A.M. - 11:30 P.M.  
 CLOSED SUNDAY  
 Not a Restaurant  
 No One Under 20 yrs. of Age admitted

**WANTED TO LEASE OFFICE SPACE**  
 BY  
**USDA-SOIL CONSERVATION SERVICE**  
 The United States Government desires listings for:  
 --2,000 square feet of office space plus or minus 5% at one location within 10 miles Kent-Sussex County line.  
 --Occupancy approximately October 1, 1982.  
 --Term of lease: 1 year with annual renewal options up to 4 years.  
 --For more information call 301-344-4197 or write to USDA, Soil Conservation Service, 4321 Hartwick Road, Room 522, College Park, Maryland 20740.  
 --This is a request for information only, not a solicitation of offers.  
 Listings will be received until close of business August 20, 1982.

**Astro-Analysis**  
 By Sonia McGinnis

**HOROSCOPE FOR THE WEEK OF AUGUST 22, 1982**

**ARIES** [March 21-April 19] - Not a week to settle for second best; you should set high standards. Accomplishments prove valuable, well worth the effort put forth. Key is to know what goals hold precedence.

**TAURUS** [April 20-May 20] - Conditions continue to improve for promoting creative self-interests. New studies are appealing and can be a valuable stepping stone for future advancement.

**GEMINI** [May 21-June 21] - All indications point to expansion, exploring new avenues that can lead to a more lucrative future. Don't be reluctant to experiment with new methods of making money.

**CANCER** [June 22-July 21] - You make great strides in personal achievements and your charming personality attracts people who are eager to help promote aims. Special projects prove very successful at this time.

**LEO** [July 22-August 21] - Your ambitious outlook keeps you alertly aware for all opportunities, gives access to unlimited growth potential. Join forces with associates and work for mutual interests. Key now is compatibility.

**VIRGO** [August 22-September 22] - Innovative ideas prove quite prosperous, colleagues are happy to be included in your plans too. You should be able to reach a happy medium in mixing social and business obligations.

**LIBRA** [September 23-October 22] - Hopes and wishes are more likely to occur as you get tremendous backing from reliable friends who want to see you succeed. The new associations you form now can be your best investment so choose carefully.

**SCORPIO** [October 23-November 21] - Your abilities provide you with the insight needed for getting past the planning stages. Don't waste time daydreaming, this should be the week for getting things done.

**SAGITTARIUS** [November 22-December 20] - You can enjoy a prosperous week by placing trust and confidence in partner's know-how. A good time to establish firmer footing where joint interests are involved; know your aims.

**CAPRICORN** [December 21-January 20] - Most investments and actions create public interest so keep things above board. Prepare for some controversial issues to arise with colleagues but most things can be worked out constructively.

**AQUARIUS** [January 21-February 19] - Outside interests keep you occupied now and most encounters prove quite demanding but worth the efforts you give. Expect new challenges as the week progresses, a progressive, productive week, however.

**PISCES** [February 20-March 20] - Continue to be tolerant with those who dwell with you. Influences outside the home are favorable. Plan a recreational week which includes friends.

# Top Quality at Low Prices!

Turkey Drumsticks - 65¢ lb.  
 Turkey Wings - 59¢ lb.  
 Turkey Necks - 55¢ lb.

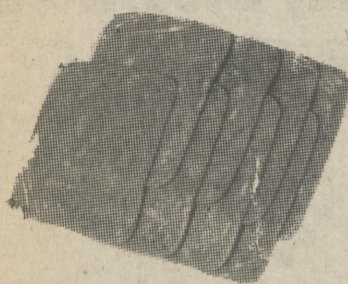
Frozen Perdue Frying Chickens  
 - Cut up or Whole 49¢ lb.  
 - Legs - 69¢ lb.  
 - Breasts - \$1.09 lb.

Shorgood Chicken Franks  
 79¢ lb.  
 2 lbs. or More 69¢ lb.

Hormels Pear Shaped  
 Canned Hams  
 3 lb. Can \$6.99



Shenvalley Hot  
 Smoked Sausages  
 \$1.09 lb.



Esskay's Barbeque Loaf  
 Deli Sliced \$2.29 lb.



Chef Boyardee Spaghetti Dinner  
 w/Meat Sauce  
 19 oz. Pkg. \$1.29

Folgers Flaked Coffee  
 13 oz. Can \$1.99



Hunts Tomato Paste  
 18 oz. Can 99¢



"Mr. Big"  
 Bathroom Tissue  
 6 Roll Pkg. \$1.39



Ocean Spray  
 Cranberry Juice  
 32 oz. Jar  
 99¢



Lipton Flo-Thru Tea Bags  
 Pkg. of 100 \$1.99



Birdseye  
 Cool-Whip  
 12 oz. Pkg. 99¢

**SAVE 15¢**

**Camay**  
 BEAUTY SOAP  
 ONLY  
 15¢ OFF  
 99¢

2 5.0 oz. BATH SIZE BARS



Hefty Trash Bags  
 (30 Gal. Size) Pkg. of 10  
 99¢



S.O.S. Steel Wool  
 Soap Pads  
 Pkg. of 10 59¢

**OUTSTANDING VALUE**

BATH SIZE DEODORANT BAR SOAP  
 YOU PAY ONLY

**40¢ OFF**  
**Coast**  
 \$1.99

4 - 5.0 OZ. BARS



"Joy" Dishwashing Liquid  
 12 oz. Container  
 49¢

Clorox All-Fabric  
 Powdered Bleach  
 40 oz. Pkg. \$1.39

**FRESH SCENT**

**Safeguard**  
 SOAP  
 You can't buy a better deodorant soap.  
 YOU PAY ONLY

**20¢ OFF**  
**Safeguard**  
 99¢

2.50 OZ. BATH BARS  
 AVAILABLE IN BEIGE, WHITE, AND GOLD COLORS

Minute Maid Orange Juice  
 with Pulp  
 12 oz. Can 99¢



Cracker Barrel Cheese Sticks  
 Sharp Only 10 oz. Pkg.  
 \$1.59

Esskay's  
 Early-Joy Sliced Bacon  
 1 lb. Vac Pac  
 \$1.59

Dairy Market Country  
 Enriched White Bread  
 20 oz. Loaf 59¢



New Crop  
 Bartlette Pears  
 59¢ lb.

California Carrots  
 3-1 lb. Pkgs.  
 \$1.00

## Quillen's Dairy Market

We reserve the right to limit quantities.

For your shopping convenience, we are open every day of the year!

8/19-20-21

Phone 398-8768

DORMAN STREET  
HARRINGTON, DE.

## Looking ahead to the school year

by Dr. James S. Pressley

The school year 1982-83 for Woodbridge School District promises to be an exciting one. Much planning and decision making has been going on during the past year involving the administration, teachers and board. The board has adopted a revised philosophy and has accepted the recommendation of the administration of 17 objectives, or goals. At present, the administration is working on prioritizing these objectives and are working to implement activities to obtain these goals.

There are several things that will begin with the new school year that are tangible evidences of the work that has been done this past year. Among these are a revised bus system which eliminates shuttles and loss of instructional time for students at both Woodbridge Elementary School and this fall.

### L.F. Homeroom assignments

(Continued from page 2)

A102: 10N - Sard-Smith, D. C133: 100 - Mrs. Singleton, Smith, G.-Taylor, B., B102: 10P - Mrs. Stichel, Taylor, R.-Walker, B126: 10Q - Mr. Williamson, Warren-Zweidner, B121.

**JUNIORS - IIA** - Mr. Anders, Ames-Clarke, C122: 11B - Dr. Armstrong, Coburn-Dodd, B132: 11C - Mr. Boyd, Donato-Gerardi, B101: 11D - Mrs. Melling-Giles-Kates, B127: 11E - Ms. Schreiner, Killen-Moore, B136: 11F - Mr. Spicer, Morris-Reed, C125: 11G - Mr. Stichel, Richardson-Stump, B111: 11H - Mr. Woehle, Sturgis-Zeiler, B124.

**SENIORS - 12A** - Mrs. Davis, Abrams-Cameron, B127: 12B - Mrs. Ford, Caskey-Eccleston C131: 12C - Mrs. Gannon,

(Continued from page 5)

may work up to 20 hours per week during academic terms and 40 hours per week during vacation periods. The financial aid officer in charge of work-study will consider: a) a student's need for financial assistance; b) class schedules; c) health and academic progress; and d) employment preferences. Undergraduate students in degree programs and graduate students are eligible to apply for College Work Study.

### SOCIAL SECURITY BENEFITS

Students who are disabled may be eligible for benefits through the Social Security Administration.

Further information about this program is available from the Social Security Administration.

The junior/senior high school will experience the implementation of a new program directed toward disruptive students. This inhouse school suspension program is being developed to provide counseling and remediation for students who for some reason find it difficult to function in the regular school setting.

Emphasis has been placed on teaching and screening Kindergarten students entering school for the first time this fall. Needs have already been identified and programs developed for many of these students. A district administrative handbook has been developed and the Central Office Staff were given a complete orientation and review of the next year's work on July 15. Following this, principals have been busy preparing teacher handbooks, distributing textbooks, instruct-

ional materials, and preparing for teachers and students to arrive in September. Much activity has been given to building maintenance and ground care so that students will have an inviting environment in which to learn.

The Board of Education made a major decision several months ago to conduct a study within the district to determine long-range needs. Four committees have been established to study the four areas of the school program.

As I stated earlier, the school year promises to be an exciting one for the Woodbridge School District. We anticipate a renewed excitement in "Teaching, Learning, and Caring", which is the theme for the program within the school district for the year 1982-83.

### VETERAN'S ADMINISTRATION BENEFITS

The Veteran's Administration has three types of education benefits for those who qualify:

1. The GI Bill is available to veterans who served ten months of continuous active duty. The benefits must be used within 10 years of discharge from the military.
2. The Tutorial Assistance Program allows the dependent of a disabled or deceased veteran a stipend of no more than \$69 per month for a maximum of 12 months within the 45-month eligibility period.
3. The Educational Loan Program extends \$2,500 loans for a regular academic year. Repayment of the loan begins 9 months after termination of studies.

Information about these programs is available from the veteran's representative at the school you will attend or from the Veteran's Administration.

# BACK-TO-SCHOOL

# September 7th

Supplement to The Harrington Journal August 18, 1982

Printed & Published by The Harrington Journal

## Woodbridge 1982-83 Calendar

September 1 & 2	Inservice School Opens
September 7	Abbrev. Day Mid 9 Wks.
October 11	Abbrev. Day Mid 9 Wks.
November 2	Election Day
November 4	Return Day
November 9	End 1st 9 Wks.
November 15	Abbrev. Day
November 24-26	Thanksgiving
November 29	School Reopens
December 24-January 2	Winter Vacation
January 3	School Reopens
January 21	End 2nd 9 Wks. Exams/Jan. 18-21
January 24	Abbrev. Day
February 18	Inservice Day
February 28	Abbrev. Day
March 18	Inservice Day
March 29	End 3rd 9 Wks.
April 1-10	Spring Vacation
April 11	School Reopens
May 9	Abbrev. Day
May 30	Memorial Day
June 8	Abbrev. Day
June 9	Inservice
June 10	Abbrev. Day End 4th 9 Wks.

NOTE: Any days lost because of bad weather or other forced closings shall be made up at the end of the regularly scheduled school year.


## Lake Forest 1982-83 Calendar

September 1st, 2nd	Inservice Days (no school)
7th	School Opens (half day)
October 7th	Interim Reports Issued
21st	Half Day (inservice)
November 2nd	Election Day (no school)
9th	End of Marking Period I
16th	Half Day (inservice)
25th, 26th	Thanksgiving (no school)
December 24th-Jan. 2nd	14th Interim Reports Issued
3rd	Winter Vacation
20th	School Reopens
21st	Half Day (inservice)
28th	End of Marking Period II
February 18th	Report Cards Issued
24th	Inservice Day (no school)
March 18th	Interim Reports Issued
29th	Inservice Day (no school)
April 1-10th	End of Marking Period III
11th	Spring Vacation
13th	School Reopens
13th	Report Cards Issued
13th	Half Day (inservice)
May 9th	Interim Reports Issued
30th	Memorial Day (no school)
June 7th	Half Day (inservice)
8th	Half Day (inservice)
9th	Teacher Day (no school)
10th	Last Pupil Day
10th	Report Cards Issued

NOTE: Any days lost because of bad weather or other forced closings shall be made up at the end of the regularly scheduled school year.

### Supplement Index

Lake Forest	Page 2
Woodbridge	Page 8
College Financial Information	Page 4



**398-3706**

# Harrington Journal

THE HUB OF DELMARVA

**Call our advertising representative today for all your advertising needs.**

**Quality Printing for Less!**

Letterheads Business Cards Wedding Invitations

Also

Typesetting & Composition Services

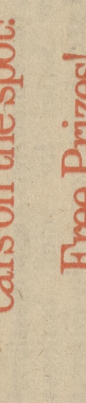
**Subscription Rates**

**\$8.50 - In State**

**\$9.50 - Out of State**

**\$7.00 - Senior Citizens In State**

**\$8.50 - Senior Citizens Out of State**



**SUBSCRIBE TODAY**

## RACEWEEK is taking over!

The new Dover Mall

September 18, 1982 9 a.m. - 9 p.m.

See your favorite race cars on the spot!

Free Prizes!

Be sure to come say Hello!

**Subscribe today!**

RACEWEEK RATES

In State \$10.00 Out of State \$11.50

SEND TO: RACEWEEK, P.O. BOX 238, HARRINGTON, DE 19922.

Name: \_\_\_\_\_

Address: \_\_\_\_\_

City: \_\_\_\_\_ State: \_\_\_\_\_ Zip: \_\_\_\_\_

(Please Print Clearly)

Call 398-3206 to place your ad in our special publication covering this super special event and big CRC Chemical races on September 19.

# Lake Forest policy changes stress "atmosphere for learning"

As Lake Forest Schools prepare to open on Tuesday, September 7, the administration and staff are putting the emphasis on maintaining "the best possible atmosphere for learning." Changes will be most noticeable at Lake Forest High School where the goal, according to a letter sent out to parents of high school students, is to "...provide a more disciplined atmosphere. (A copy of that letter appears on page 1 of the supplement.)"

In a recent interview, Lake Forest Superintendent of Schools Dr. Edward M. Powell and High School Principal Dr. Margaret Phelps explained some of the new policies more fully.

Basically these policies cover the handling of students who are chronically disruptive, the virtual elimination of out-of-school suspension, cracking down on tardiness and absenteeism, new procedures for dealing with students who attend classes but do not participate in required activities and assignments, and more control over movement through the halls and use of the lavatories.

## -Open letter from the Lake Forest High School administration-

### High School administration-

Through state funds provided for the establishment of a unit for disruptive students, the high school will set up an alternate program for about 16 to 20 students who are chronic offenders, unable to handle themselves in the regular classroom. Two special education teachers and a counselor have been hired to take these students in charge. Students in the alternate unit will have classes, eat and use bathroom facilities totally within the confines of the unit under the supervision of the special personnel. They will not attend classes, go to lunch or participate in activities with other students. They will receive daily counseling and also have access to services provided by two school psychologists. The unit will include some junior high school students.

**In-School-Suspension**

There will be no more one, two or three day holidays (otherwise known as out-of-school suspension) for students who get into trouble. Instead there will be a supervised area set aside for in-school-suspension where students will be given classwork for which they will receive credit. Dr. Powell explained that the previous policy was to give the student suspended from school a "0" for the day for any work or tests for which the students in the class would have been graded that day. However, if the suspension did not happen on a day when there was a test scheduled or graded assignment due, there was no real

penalty. By chance, some were penalized more than others. If a student on in-school suspension goofed off and does not work, the suspension will not count. He will have to serve it again.

**Tardiness/Absenteeism**

In the past, a student could accumulate a string of "tardy's" in several classes before any real disciplinary action was taken. That will change this year. A student will receive one warning. On the second and any subsequent occasion on which he is late for homeroom or a class he will receive a

Dr. Powell says that absenteeism at the high school has averaged about 8 1/2%. That means that on any given day about 250 students are absent. Although that is about average for the state and perhaps lower than the national figure, he thinks it is still too many. This year, each time a student is absent, his parents will get a phone call. Homerooms will be smaller to permit homeroom teachers to make these

calls. A student who accumulates ten days or more of unexcused absences in any class will not receive a passing grade in that class for that marking period. Dr. Phelps reports that there is a definite relationship between the time a student spends in class and what he learns from that class. Students who are frequently absent hurt themselves.

**Class Participation**

After all effort has been made through teachers, counselors, administrative staff and conferences with parents, students who are failing because they do not take part in classroom activities will be taken out of the class and put in a study hall. Students placed in more than three study halls will be asked to withdraw from school. By their refusal to participate, they hurt themselves and disrupt the learning atmosphere for others.

To insure a more orderly school environment, there will be increased control over

movement through the halls. This will include teachers monitoring lavatories between and during class periods to insure they are kept clean and accessible to those who need to use them. In addition, some policies for use of the library will change. Study hall teachers will no longer write library passes. A student who needs to use the library for an assignment will have to get the appropriate pass from the classroom teacher a day in advance. Students with library passes will go directly to the library, rather than report in to study hall. The librarian will send a list of those in the library to study hall teachers.

**Parent/Student Handbook**

Parent/Student Handbooks which include an explanation of all discipline policies will go home with all students from the elementary through the high school levels. Parents should ask to see them.

### LAKE FOREST HIGH SCHOOL, HOMEROOM SECTIONS 1982-83

- FRESHMEN** 9A-Mr. Buck, Acree-Biggs; C124:9B - Mrs. Cajthaml, Bodine-Cohoe; B103: 9C - Mr. Coverdale, Cole-Dixon, J.; B128: 9D - Mr. Judd, Dixon, L.; Grace, B135: 9E - Mr. Moore, Grateski-Harrison, C128: 9F - Mrs. Redden, Hawkins-Jones, J.; B134: 9G - Ms. Reed, Jones, S.; Miller; B105: 9I - Mrs. Simon, Miller-Fearce; B105: 9J - Mr. Wansley, Pearson-Rust; B133: 9J - Mr. Wansley, Sanchez-Smith, I.; Gym N/W; 9K - Mr. Wood, Smith, J.; Welch, B125: 9L-Staff, White-Sandler, B104.
- SOPHOMORES** 10A-Mr. Abbott, Abrams-Bell, L.; Gate, S/E; 10B-Mr. Blades, Benjamin-Brown, T.; Gym S/E; 10C - Mr. Brasure, Browne, C.; Clarke, Cate, N/E; 10D - Ms. Burris, Coker, L.; Davis, B106: 10E - Mr. Dill, Dean-Evrett, S.; B123: 10F - Ms. Dyal-Evrett, T.; Green, Gym N/E; 10G - Mr. Falasco, Greenly-Hodgson, Gym S/W; 10H - Mr. Fleming, Holbert-Irish, C132: 10K - Mrs. Kee, Jackson-Lawson, B112: 10K - Mr. Mumay, McKeanze-Morris, Cha, B122: 10L - Mrs. Newell, Morris, Che-Phillips, C135: 10M - Mrs. Rennie, Polk-Sanders.
- (Continued on page 8)
- Note-**
- Any student who plans to return to high school and has not already been scheduled should call the guidance office right away. Counselors are available through the week from 8 a.m. until 4 p.m. The number is 284-9291 or 9292.

**Quillens Market**  
Dorman St., Harrington, De.

We Sell The Best Meat In Town



(Tender As A Mothers Love)

**L & M FASHIONS**  
45 Clark St. Harrington, DE  
398-8625

Factory Outlet Store- Low Mark-Up  
Jeans, Knit Shirts, Blouses, Pull-Overs For Adults and Juniors  
Also-Mix & Match sets For Small Children  
Lena Casler  
"Our Clothes Go Back to School!"

## Reed's Camden Dairy Queen



2S. DuPont Hwy. Camden, Del. 19934  
697-7982

\* Reg. U.S. Pat. Off. Am. D. Q. Corp. © 1975 Am. D. Q. Corp.

**Garnation**  
21% DOG FOOD  
SPECIAL PRICE  
\$7.45  
per 50 lb. bag



A good farm dog is not just a working partner.

**T.G. ADAMS & SONS, INC.**

Feed and Grain Dealers

Buyers of corn & soybeans We handle all carnation feeds.  
Railroad Avenue, Bridgeville, DE  
302-337-8281 • 302-856-3264

## Insurance

### WILLIAM MOORE AGENCY

"We are specialists in servicing what we sell."

- Homeowners
- Farms
- Farm Equipment
- Auto
- Commercial

Lynn M. Hitchens  
President  
284-4511 Rt. 13 Felton, DE



Del-Mar-Va's Largest

Furniture • Carpeting • Appliance Stores

1275 S. DuPont Hwy. Dover, Del. 19901  
678-3500  
417 N. Salisbury Blvd. 1 Mile South of Pocomoke  
Salisbury, Md. 21801 Pocomoke, Md. 21851

## Delaware Technical and Community College Terry Campus

Open Fall Registration

Thursday, Sept. 2

9 A.M. To 8 P.M.

Associate Degree Offerings in:

### Business

Accounting, Banking, Business General, Executive Secretarial, Data Processing, Information Processing, Marketing/Management

### Engineering

Aeronautical Science, Architectural Drafting Technology, Civil Engineering Technology, Construction Management, Electrical Engineering Technology, Electronics Engineering Technology, Science and Engineering Technology, Computer Engineering Technology

### Public Service

Criminal Justice, Human Services

### DIPLOMA OFFERINGS IN

Architectural Drafting Studies, Construction Studies, Clerical Mechanical Drafting Studies, Practical Nursing, Stenographic, Surveying Studies

For fall registration or program information, contact the Admissions Office, 736-5451.

**CONTINUING EDUCATION and SPECIAL INTEREST OFFERINGS:**  
Arts/Crafts; recreation/leisure; professional development series for small business owners and secretaries; community interest courses. For further information, call 736-5688

Information about off-campus child care services will be available at registration.

1823 N. duPont Parkway  
Dover, Delaware 19901

"Putting You In Touch With Tomorrow"

**Terry Campus**

DELAWARE TECHNICAL AND COMMUNITY COLLEGE



**The First National Bank**  
of  
**Harrington**

Harrington 398-3232  
Member FDIC

Canterbury 284-3201

Mrs. Joyce Kimmey- Vice President  
Student Loan Coordinator

**The Furniture Barn**

**Catalog Shopping Service**  
if we don't have it ... we'll get it!

**Delivery Available**    **Appliances**  
**Furniture, New & Used**

**284-9009**

Main & Railroad Ave. Felton, DE  
Mon. to Fri. 10 to 6  
Sat. 9 to 4 Sun. 12 to 4    **We accept Master Card & Visa**

TURNING  
POTENTIAL . . . .  
INTO  
PERFORMANCE  
*let us do it.*

**DELAWARE  
STATE  
COLLEGE**  
Dover, Delaware

76

August 29 . . . . . Residence Halls Open  
August 30 . . . . . Freshman Orientation  
September 1 . . . . . Registration  
September 2 . . . . . Classes Begin  
September 7 . . . . . Late Registration Begins  
   Changes in Class Schedules Begin  
September 15 . . . . . Late Registration Ends  
   Last Day for Adding Classes

(302) 736-4924



**Students'  
Lee Rider  
Straight Leg Jean**

The true distinction lies in how the man looks, not how much he pays. And this straight leg jean will dress up with a corduroy jacket or down with a T-shirt to make you look good at any school function. 14-ounce, 100% cotton, indigo dyed denim. 14-rib low-blend corduroy. 84% cotton and 16% Polyester. Controlled shrinkage. Corduroy is available in 14 colors.

- \$3.00 off all Jeans & Cords**
  - \$3.00 off all Denim Jackets**
  - \$1.00 off T-Shirts**
  - \$1.00 off Sweat Shirts**
- "In-Store Specials"  
Short Sleeve Shirts  
Chambray Shirts
- SCHOOL SUPPLIES**  
**LOCKS**  
**LUNCH BOXES**  
**THERMOS BOTTLES**

**Taylor's Hardware**

Commerce St., Harrington, DE 398-3291

**Quillen Shopping Center**  
Harrington, Del.  
**398-4398**

Hours: Mon. Tues. & Wed. 8 am - 6 pm    Thurs. & Fri. 8 am - 8 pm    Saturday 8 am - 7 pm    Sunday 10 am - 4 pm

**School Supplies**

Filler Paper 200 sheets ... \$1.49  
Filler Paper 60 sheets ... 79¢

Composition Books 80 sheets ... \$1.39  
Schedule Folder ... 39¢

Schedule Folder with filler paper holder ... 49¢  
6" Protractor ... 29¢

12" Wood Alco Ruler ... 29¢  
3 Subject Notebook 120 Sheets ... \$1.89  
Alco 7 piece Eraser pack ... 69¢

Ball point Pens 1 doz. ... \$3.00  
Pencils 1 Doz. No. 3 ... \$1.80

Walt Disney School Bags ... \$4.49  
Memo Book 5x3 100 Sheets, Ruled ... 39¢  
Memo Pads 3x5 80 Ruled Sheets ... 39¢  
Loose Leaf Binder ... \$1.69  
Notebook 70 Sheets ... 89¢

Ross White Paste 5 oz. Non-toxic ... 59¢  
Pritt Glue Stick 0.26 oz. ... 6¢

**WISDOM SCHOOL BUYS!**

**Where's  
The  
Action?**



At Chick's, where there's always something happening. Now Chick's brings you their own "SAWBUCK" JEANS.

The fabric is 100% prewashed, 14 3/4 oz. cotton denim and features 5 pocket styling, leather patch, slim cut and easy movin' comfort. And the cost is just one sawbuck!

**Chick's "Sawbuck" Jeans**

saw'buck' slang ten dollar bill

In student sizes 25-30 . . . . . \$10.00  
Full cut men's sizes 25-54 in stock  
for . . . . . \$12.95 ea.



U.S. Route 13  
Harrington  
398-4630  
Open 7 days a week

**REGISTER NOW for the  
KENT COUNTY VOCATIONAL  
TECHNICAL SCHOOL DISTRICT'S  
ADULT EVENING PROGRAM  
FOR THE FALL OF 1982 at**

**KENT CENTER (KC)**  
Woodside-Rising Sun Rd.  
Woodside, Delaware

**KENT NORTH (KN)**  
Denny's Road  
Dover, Delaware

Registration will be held daily at the Adult School Office, Kent County Vocational Center, Woodside, Delaware on September 1st and 2nd, 1982 and from 7 - 9 PM on Wednesday, September 1st. Or use the mail registration form for early registration for the following courses.

COURSE	LOCATION	NIGHTS	COST
Airframe/Powerplant	KC	Mon. & Wed.	\$30.00
Auto Body	KC	Tues. & Thurs.	35.00
Auto Body	KN	Tues. & Thurs.	35.00
Engine Overhaul	KC	Tues. & Thurs. (6 - 10 PM)	40.00
Tune Up	KN	Tues. & Thurs.	40.00
Auto Upholstery	KC	Mon. & Wed.	30.00
Blue Print Reading	KC	Wed.	20.00
Bookkeeping for Small Business	KC	Mon. & Wed. (6 - 8 PM)	20.00
Bookkeeping I	KC	Mon. & Wed.	35.00
Cabinet Making	KC	Tues. & Thurs.	40.00
Cabinet Making	KN	Tues. & Thurs.	40.00
Carpentry	KC	Mon. & Wed.	40.00
Child Care	KC	Tues. & Thurs.	25.00
Commercial Art	KC	Mon.	20.00
Commercial Food Preparation	KN	Tues. & Thurs.	50.00
Computer Programming-Basic	KC	Mon. & Wed.	25.00
Data Processing Basic	KC	Tues. & Thurs.	25.00
Diesel Mechanic	KN	Tues. & Thurs. (6 - 10 PM)	80.00
Drafting-Basic	KC	Mon. & Wed.	20.00
Electric Code	KC	Wed.	20.00
Electrical Construction	KC	Mon. & Wed.	25.00
Electrical Apprentice I, II	KC	Tues. & Thurs.	25.00
Electrical Apprentice III, IV	KN	Tues. & Thurs.	25.00
General Office Practice	KC	Tues. & Thurs.	25.00
Greenhouse Management	KC	Mon. & Wed.	35.00
Interior Design-Basic	KC	Tues.	20.00
Data Entry-Keypunch	KC	Tues. & Thurs.	25.00
Masonry	KC	Tues. & Thurs.	30.00
Motorcycle Repair	KC	Mon. & Wed.	35.00
Nurses Aide	KC	Tues. & Thurs.	30.00
Oil Burner Servicing	KC	Mon. & Wed.	25.00
Photography-Commercial	KC	Tues. & Thurs.	30.00
Commercial Pilot	KC	Tues. & Thurs.	25.00
Plumbing	KC	Tues. & Thurs.	25.00
Printing	KC	Mon. & Wed.	20.00
Refrigeration	KC	Tues. & Thurs.	60.00
Salesmanship-Retail	KN	Tues. & Thurs.	30.00
Security Guard Training	KN	Tues. & Thurs.	25.00
Small Business Management	KC	Wed.	20.00
Small Engine Repair	KC	Tues. & Thurs.	25.00
Solar Energy & Sheetmetal	KC	Mon. & Wed.	20.00
Beginning Shorthand	KC	Tues. & Thurs. (6 - 8 PM)	35.00
Refrresher Shorthand	KC	Wed. (6:30 - 9:30)	20.00
Television Repair	KC	Tues. & Thurs.	25.00
Typing I	KC	Tues. & Thurs. (6 - 8 PM)	35.00
Typing I	KC	Tues. & Thurs. (8 - 10 PM)	35.00
Refresher Typing	KC	Mon (6:30 - 9:30)	25.00
Basic Welding	KC	Mon. & Wed.	90.00
Advanced Welding	KC	Tues. & Thurs.	90.00

Make all checks or money orders payable to Kent Center Adult Program.

RETURN THIS FORM TO:  
Kent County Vo-Tech Center  
P.O. Box 97  
Woodside, DE 19980  
Attn: Ms. Carol A. Loveland  
687-3257.

**MAIL REGISTRATION FORM**

NAME \_\_\_\_\_  
ADDRESS \_\_\_\_\_  
COURSE DESIRED \_\_\_\_\_  
SS# \_\_\_\_\_  
HOME PHONE \_\_\_\_\_ WORK PHONE \_\_\_\_\_ (KN)  
LOCATION OF COURSE \_\_\_\_\_ (KN)  
CAR POOL \_\_\_\_\_ YES \_\_\_\_\_ NO \_\_\_\_\_

# College bound? -- \$ aid info for students

## NEED-BASED FINANCIAL AID

Most student assistance programs subscribe to the principles of need-based financial aid. Inherent to these principles is the expectation that parents and students will pay for the cost of college to the extent that they are able. This does not mean that family income determines ability to pay. Although income is an important factor in the analysis, it is only one of the many factors considered. The size of the family, age of parents, retirement provisions, number of family members in college, assets and liabilities are also considered.

In order to be consistent in estimating a family's ability to pay, most aid programs use a nationally-accepted "Uniform Methodology." Several companies process financial analyses according to these principles. Some schools accept only one of the analyses as fulfilling their application requirements. Be sure to find out which form is accepted by each college to which you are applying.

The two major need analysis companies American College Testing and College Scholarship Service make their applications available at all high schools and colleges in the State of Delaware.

Your best source of information about financial aid is the college financial aid office at each college you are considering.

**DEFINITIONS**  
ACT - American College Testing program is a company which provides need analysis services for institutions and scholarship agencies in higher education. There is a processing fee for these analyses, which the student must pay in most cases.

**INSTITUTIONAL PROGRAMS**  
Most colleges offer student assistance in the form of scholarships, grant, loans and part-time employment. These institutional resources continue to provide a substantial amount of help for students.

**BEQG**-This Federal financial aid program has been renamed the "Pell Grant" program. Details of the program are provided under the Federal Government section.

**CSS** - College Scholarship Service is a division of the College Entrance Examination Board and provides need analysis services to higher education institutions and scholarship agencies. The processing fee for such analyses is paid by the student in most cases.

**FAP** - The Financial Aid Form is the data collection form of the College Scholarship Service.

**FFS** - The Family Financial Statement is the data collection form of the American College Testing program.

**GSL** - Guaranteed Student Loan; see description under State-Sponsored Financial Aid.

**NDSL** - National Direct Student Loan; see description under Federal Government Financial Aid.

**OTHER FINANCIAL AID SOURCES**  
In addition to Federal and State aid, assistance is available from a variety of private sources. Some of these are strictly merit-based (awarded because of exceptional abilities or academic performance). However, most also consider a student's financial need for assistance in making awards.

**COMMUNITY PROGRAMS**  
Almost every community has organizations, institutions, or agencies that provide aid to students in some form. They may be professional organizations local nursing or medical organizations, the tuberculous society, etc.) or a service group (Lions, Rotary, Kiwanis). Your local high school counselor may be aware of the sources available in your community. Be sure to personally contact any in which you are a member.

**FOUNDATION & CORPORATION PROGRAMS**  
Many private foundations and large corporations offer financial assistance to students. Several publications are marketed which provide detailed listings of these and other sources. Your local library and bookstores may be able to assist you.

**THE STATE OF DELAWARE**  
The State of Delaware provides student aid in several forms, primarily in "Aid to Needy Students" and "General Scholarships" programs, which are granted to institutions for their distribution. If you apply for assistance at a Delaware institution you will be considered automatically for these programs.

**DELAWARE POSTSECONDARY SCHOLARSHIP FUND**  
The Postsecondary Scholarship Fund is a need based grant program for Delaware residents who are enrolled (or will be enrolled) as full-time degree candidates at one of the following:  
1. Public or private institutions in Delaware.

In addition, an applicant must answer the questions on the form which pertain to the Delaware Postsecondary Scholarship Fund and must also apply for a Pell grant. Further information about this program is available from high school guidance counselors and college financial aid officers or from the Postsecondary Education Commission, Carvel State Office Building, Dover.

**GUARANTEED STUDENT LOAN PROGRAM (GSL)**  
The Guaranteed Student Loan Program is not awarded as a form of financial aid in the way the National Direct Student Loan is awarded. Students borrow money to finance education by applying to a participating bank, credit union, or savings and loan institution. A maximum loan of \$2,500 per year can be obtained by undergraduates; a graduate student may borrow up to \$5,000 per year. The amount of money a bank has available to lend under this program is limited. It is a good idea to contact banks early about these funds.

A 9% interest rate is charged for GSL's. The government will pay the interest on the loan until the time the student must begin to repay the loan, and during authorized periods of deferment.

All GSL's must be repaid within ten years after a student graduates or leaves school. The amount of each payment depends on the size of the debt and the student's ability to pay; in most cases the borrower must repay at least \$360 per year. There are provisions for deferring payment under this program for service in Peace Corps, ACTION programs, armed service, and return to school.

Applications for the GSL are available from school financial aid offices and from participating lending institutions.

Participating lenders in Delaware are:  
Bank of Delaware  
Delaware Trust Company  
Peoples Bank & Trust Company  
Wilmington Trust Company  
Dover Federal Credit Union

**PELL GRANT PROGRAM**  
The Pell Grant program is designed to provide assistance to students who demonstrate exceptionally high levels of need. In addition to demonstrated financial need, a student must be attending an eligible school and must be enrolled as at least a half-time student. A student may receive Pell Grants for undergraduate study (below the Bachelor's degree) only. Students who have earned one Bachelor's degree are not eligible to apply for Pell Grants.

Application for Pell grants can be made by filing the FFS or the FAP; but once the information is sent to Pell by the needs analysis service, all other communications between the student and Pell are direct. A student may be asked to provide follow-up information to Pell and to the needs analysis service. This is not a duplication since Pell does not receive updated or revised information from CSS and ACT.

There is no charge to the student for applying to the Pell Grant program, and often application to Pell is a requirement for other financial aid programs.

**COLLEGE WORK-STUDY PROGRAM**  
Students who must work to help pay their education may be offered College Work-Study as a part of their financial aid package. Jobs may be on- or off-campus, and are arranged through the financial aid office of the school. The wage for such jobs is usually based on the federal minimum wage and is related to the skills and abilities required to do the job. Students

[Continued on page 81]

**NATIONAL DIRECT STUDENT LOAN (NDSL)**  
This is a campus-based loan program and should not be confused with the Guaranteed Student Loan program (GSL), which is obtained through banks and other

lending institutions. NDSLs are awarded as a form of financial aid by the college a student attends.

Repayment of this loan is delayed until graduation or until a student leaves school for other reasons. The interest charged is 5%; repayment may be spread over ten years. During the repayment period, interest is charged on the unpaid balance of the loan principle, but while a student is in school, the interest is paid by the Federal government.

**COLLEGE WORK-STUDY PROGRAM**  
Students who must work to help pay their education may be offered College Work-Study as a part of their financial aid package. Jobs may be on- or off-campus, and are arranged through the financial aid office of the school. The wage for such jobs is usually based on the federal minimum wage and is related to the skills and abilities required to do the job. Students

[Continued on page 81]

**PELL GRANT PROGRAM**  
The Pell Grant program is designed to provide assistance to students who demonstrate exceptionally high levels of need. In addition to demonstrated financial need, a student must be attending an eligible school and must be enrolled as at least a half-time student. A student may receive Pell Grants for undergraduate study (below the Bachelor's degree) only. Students who have earned one Bachelor's degree are not eligible to apply for Pell Grants.

Application for Pell grants can be made by filing the FFS or the FAP; but once the information is sent to Pell by the needs analysis service, all other communications between the student and Pell are direct. A student may be asked to provide follow-up information to Pell and to the needs analysis service. This is not a duplication since Pell does not receive updated or revised information from CSS and ACT.

There is no charge to the student for applying to the Pell Grant program, and often application to Pell is a requirement for other financial aid programs.

**COLLEGE WORK-STUDY PROGRAM**  
Students who must work to help pay their education may be offered College Work-Study as a part of their financial aid package. Jobs may be on- or off-campus, and are arranged through the financial aid office of the school. The wage for such jobs is usually based on the federal minimum wage and is related to the skills and abilities required to do the job. Students

[Continued on page 81]



**\$ \$ \$**

The Delaware Postsecondary Scholarship Fund made over 1000 grants to Delaware students for the 1982-83 school year.

If you will require financial aid for the 1983-84 school year, apply to the Postsecondary Scholarship Fund between January 1 and April 30, 1983.

A brochure which provides application procedures & eligibility requirements will be available after October 15th.

Delaware Postsecondary Education Commission  
Carvel State Office Building  
820 French Street  
Wilmington, Delaware 19801

## Financial info

[Continued from page 41]

820 French St., Wilmington, DE 19801, (371-3240).

**GUARANTEED STUDENT LOAN PROGRAM (GSL)**  
The Guaranteed Student Loan Program is not awarded as a form of financial aid in the way the National Direct Student Loan is awarded. Students borrow money to finance education by applying to a participating bank, credit union, or savings and loan institution. A maximum loan of \$2,500 per year can be obtained by undergraduates; a graduate student may borrow up to \$5,000 per year. The amount of money a bank has available to lend under this program is limited. It is a good idea to contact banks early about these funds.

A 9% interest rate is charged for GSL's. The government will pay the interest on the loan until the time the student must begin to repay the loan, and during authorized periods of deferment.

All GSL's must be repaid within ten years after a student graduates or leaves school. The amount of each payment depends on the size of the debt and the student's ability to pay; in most cases the borrower must repay at least \$360 per year. There are provisions for deferring payment under this program for service in Peace Corps, ACTION programs, armed service, and return to school.

Applications for the GSL are available from school financial aid offices and from participating lending institutions.

Participating lenders in Delaware are:  
Bank of Delaware  
Delaware Trust Company  
Peoples Bank & Trust Company  
Wilmington Trust Company  
Dover Federal Credit Union

**PELL GRANT PROGRAM**  
The Pell Grant program is designed to provide assistance to students who demonstrate exceptionally high levels of need. In addition to demonstrated financial need, a student must be attending an eligible school and must be enrolled as at least a half-time student. A student may receive Pell Grants for undergraduate study (below the Bachelor's degree) only. Students who have earned one Bachelor's degree are not eligible to apply for Pell Grants.

Application for Pell grants can be made by filing the FFS or the FAP; but once the information is sent to Pell by the needs analysis service, all other communications between the student and Pell are direct. A student may be asked to provide follow-up information to Pell and to the needs analysis service. This is not a duplication since Pell does not receive updated or revised information from CSS and ACT.

There is no charge to the student for applying to the Pell Grant program, and often application to Pell is a requirement for other financial aid programs.

**COLLEGE WORK-STUDY PROGRAM**  
Students who must work to help pay their education may be offered College Work-Study as a part of their financial aid package. Jobs may be on- or off-campus, and are arranged through the financial aid office of the school. The wage for such jobs is usually based on the federal minimum wage and is related to the skills and abilities required to do the job. Students

[Continued on page 81]

**NATIONAL DIRECT STUDENT LOAN (NDSL)**  
This is a campus-based loan program and should not be confused with the Guaranteed Student Loan program (GSL), which is obtained through banks and other

lending institutions. NDSLs are awarded as a form of financial aid by the college a student attends.

Repayment of this loan is delayed until graduation or until a student leaves school for other reasons. The interest charged is 5%; repayment may be spread over ten years. During the repayment period, interest is charged on the unpaid balance of the loan principle, but while a student is in school, the interest is paid by the Federal government.

**COLLEGE WORK-STUDY PROGRAM**  
Students who must work to help pay their education may be offered College Work-Study as a part of their financial aid package. Jobs may be on- or off-campus, and are arranged through the financial aid office of the school. The wage for such jobs is usually based on the federal minimum wage and is related to the skills and abilities required to do the job. Students

[Continued on page 81]

**PELL GRANT PROGRAM**  
The Pell Grant program is designed to provide assistance to students who demonstrate exceptionally high levels of need. In addition to demonstrated financial need, a student must be attending an eligible school and must be enrolled as at least a half-time student. A student may receive Pell Grants for undergraduate study (below the Bachelor's degree) only. Students who have earned one Bachelor's degree are not eligible to apply for Pell Grants.

Application for Pell grants can be made by filing the FFS or the FAP; but once the information is sent to Pell by the needs analysis service, all other communications between the student and Pell are direct. A student may be asked to provide follow-up information to Pell and to the needs analysis service. This is not a duplication since Pell does not receive updated or revised information from CSS and ACT.

There is no charge to the student for applying to the Pell Grant program, and often application to Pell is a requirement for other financial aid programs.

**COLLEGE WORK-STUDY PROGRAM**  
Students who must work to help pay their education may be offered College Work-Study as a part of their financial aid package. Jobs may be on- or off-campus, and are arranged through the financial aid office of the school. The wage for such jobs is usually based on the federal minimum wage and is related to the skills and abilities required to do the job. Students

[Continued on page 81]

**NATIONAL DIRECT STUDENT LOAN (NDSL)**  
This is a campus-based loan program and should not be confused with the Guaranteed Student Loan program (GSL), which is obtained through banks and other

lending institutions. NDSLs are awarded as a form of financial aid by the college a student attends.

Repayment of this loan is delayed until graduation or until a student leaves school for other reasons. The interest charged is 5%; repayment may be spread over ten years. During the repayment period, interest is charged on the unpaid balance of the loan principle, but while a student is in school, the interest is paid by the Federal government.

**COLLEGE WORK-STUDY PROGRAM**  
Students who must work to help pay their education may be offered College Work-Study as a part of their financial aid package. Jobs may be on- or off-campus, and are arranged through the financial aid office of the school. The wage for such jobs is usually based on the federal minimum wage and is related to the skills and abilities required to do the job. Students

[Continued on page 81]

**PELL GRANT PROGRAM**  
The Pell Grant program is designed to provide assistance to students who demonstrate exceptionally high levels of need. In addition to demonstrated financial need, a student must be attending an eligible school and must be enrolled as at least a half-time student. A student may receive Pell Grants for undergraduate study (below the Bachelor's degree) only. Students who have earned one Bachelor's degree are not eligible to apply for Pell Grants.

Application for Pell grants can be made by filing the FFS or the FAP; but once the information is sent to Pell by the needs analysis service, all other communications between the student and Pell are direct. A student may be asked to provide follow-up information to Pell and to the needs analysis service. This is not a duplication since Pell does not receive updated or revised information from CSS and ACT.

There is no charge to the student for applying to the Pell Grant program, and often application to Pell is a requirement for other financial aid programs.

**COLLEGE WORK-STUDY PROGRAM**  
Students who must work to help pay their education may be offered College Work-Study as a part of their financial aid package. Jobs may be on- or off-campus, and are arranged through the financial aid office of the school. The wage for such jobs is usually based on the federal minimum wage and is related to the skills and abilities required to do the job. Students

[Continued on page 81]

**Shop at the Salvation Army THRIFT STORES**

**FOR SAVING**

<p><b>Smyrna</b> 16 E. Mt. Vernon PH. 653-7095</p>	<p><b>Harrington</b> 21 Commerce St. PH. 398-8924</p>	<p><b>Wilmington</b> 2117 French St. PH. 654-8808</p>
--	---	---

**DOVER** CAPITOL SHOPPING CENTER  
So. Dupont Hwy.

We have children's school clothes - shoes - sweaters  
Many items including furniture

**Program Yourself  
For a Brighter Future!**

**Computer Science**

Count on Goldley Beacom College to provide the program you're looking for. Businesses with a computer orientation will be looking for you!

Business Administration with a major in Business Information Systems; (BIS), leads to:  
Associate in Science Degree or Bachelor of Science Degree.  
Internship in industry during the last half of the Junior year or first half of the senior year for qualified students.

For further information contact the Admissions Office

**goldley beacom college inc**

Approved for Veterans  
An Equal Opportunity Institution  
4701 Limestone Road  
Wilmington, Delaware 19808 / (302) 998-8814

**There's Still Time  
to enroll at Wesley College  
for the Fall 1982 Semester**

Wesley offers:

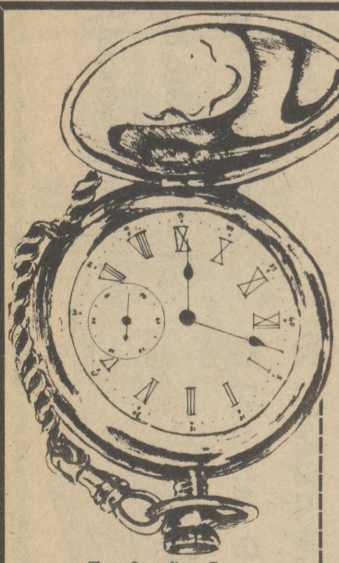
1. Quality Academic Programs including new for Fall 82 B.S. Computer Information Systems
2. Accounting Major
3. BSN Nursing for RN's
4. Academic Scholarships\*
5. Rolling Admissions\*
6. Dorm space available

Make Every Second Count  
Call the Admissions Office 736-2400 or fill out the form below and mail to the Admissions Office, Wesley College, Dover, Delaware 19801

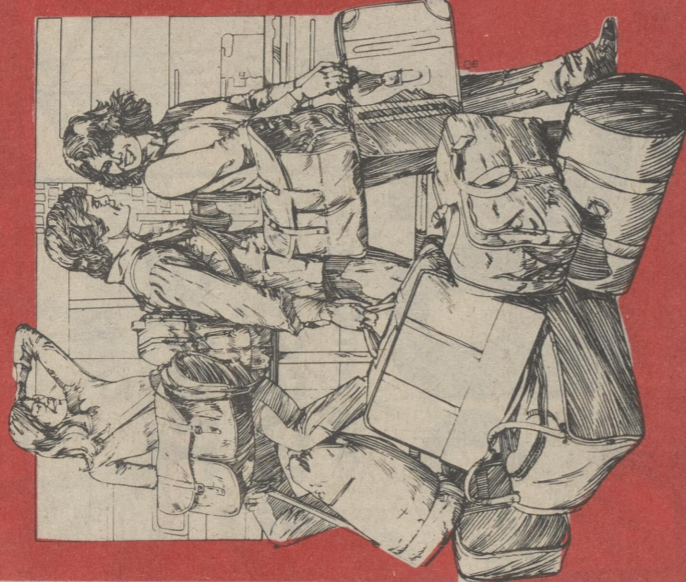
\*For an immediate admissions decision bring H.S. transcript to Admissions Office

Wesley College  
I'd like to learn more...

name \_\_\_\_\_  
address \_\_\_\_\_  
city & state \_\_\_\_\_  
phone area code \_\_\_\_\_  
zip \_\_\_\_\_



# BACK TO SCHOOL



SALE STARTS TODAY  
Hurry While Supplies Last

**Scripto Erasable Pens**  
\$2.94 VALUE  
**97¢**  
#0082  
Triple Pack Fine Point ALSO AVAILABLE  
RETAIL VALUE \$2.94  
YOUR COST 97¢  
LESS MFG. REFUND \$1.00  
YOUR COST .00¢

**No. 2 Pencils**  
10 CT. PKG.  
REG. \$1.19  
**57¢**  
#545  
Good value with eraser in brass ferrule.

WIDE RULED—5 HOLES—ASSORTED COLORED COVERS  
**70 CT. Wirebound Notebook**  
REG. \$1.19 #2469  
**47¢**  
70 COUNT wirebound notebook

**200 CT. Filler Paper**  
REG. \$1.79 #2623  
**77¢**

16 CT. **Crayola Crayons**  
REG. \$1.10 #709  
**57¢**

**CADDY PACK Scotch Tape**  
REG. \$1.76 #1571  
**97¢**  
Check store for details on additional savings

16 LB. PAPER FOR OFFICE OR HOME USE  
**200 SHEET Typing Paper**  
REG. \$2.59 #2090  
**\$1.67**

5x8" 50 CT. **Assignment Book**  
REG. 98¢ #2273  
**59¢**  
SPECIAL RULING FOR EACH DAYS ASSIGNMENT

120 CT. 3 SUBJECT 10 1/2" x 8"  
**Wirebound Notebook**  
REG. \$2.09 #2486  
**99¢**  
LESS THAN HALF OF REGULAR PRICE OUTSTANDING VALUE!

**Spindex Dictionary BY WEBSTER**  
REG. \$2.75 #2012  
**\$1.67**  
AS SEEN ON TV

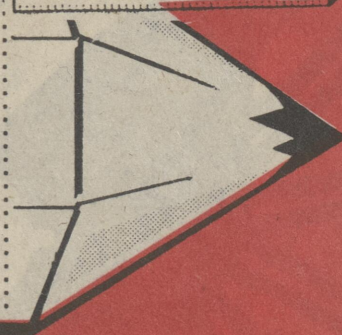
40 CT. **Construction Paper**  
REG. 98¢ #2146  
**77¢**

200 CT. 5 SUBJECT 10 1/2" x 8"  
**Wirebound Notebook**  
REG. \$3.09 #2476  
**\$1.89**  
ASSORTED COLORED COVERS THIS PRICE IS THE BEST!



**BRING THIS CHECK LIST AND SAVE!!**

- ACETATE SHEETS
- BINDERS (Cover, Preshard, Vinyl)
- BOOKCOVERS
- BOOK STRAPS
- BOOK SEALS
- CARBON PAPER
- CHALK (White or Colored)
- CLIP BOARD
- CLIPS (Brass Fasteners)
- COLLEGE RULED (4x6 or 5x8)
- CONSTRUCTION PAPER
- COMPASSES
- COMPOSITION BOOKS
- CRAYONS
- DESK PADS & SETS
- DICTIONARIES (Pocket or Desk)
- DRAWING PAPER OR PADS
- ERASERS (Pencil, Ink, etc.)
- FILE FOLDERS (Regular Size)
- FILLER PAPER (5 or 3 Hole)
- GLUES (Liquid, Paste or Stick)
- INDEX CARDS
- INDEX DIVIDERS (Rule or Blank)
- INKS & CARTRIDGES
- LOCKS (Combination or Key)
- MARKERS (Felt Tip, Ink or Water Color)
- PAINT BRUSHES
- PAINTS (Tempera, Water or Poster)
- PAGE SAVERS (Reinforcements)
- PENCILS
- PENCIL CASES (Bass or Pouches)
- PORTFOLIOS (Case or Folders)
- POSTER BOARD
- PROTRACTORS
- REPORT COVERS (Pocket or Ring)
- RULERS (Plastic or Wood)
- SCHOOL BAGS (Canvas or Plastic)
- SCISSORS (Regular or Polished)
- SCOTCH TAPE (Cellu or Masking)
- SCRAP BOOKS
- SHARPENERS (Pocket or Desk)
- STAPLERS (Pocket or Desk & Staples)
- STENO BOOKS
- THEME TABLETS (5 Hole)
- TYPING PAPER
- TYPING RIBBON (All Typewriters)
- MISC.....



**HARRINGTON PHARMACY**  
**HARRINGTON, DELAWARE**  
SALE ENDS SEPTEMBER 15th, 1982  
(302) 398-8123

# BACK TO SCHOOL

225 CT. Self-Adhesive Reinforcements  
Regular 55¢  
#1192




5" Pointed Scissors  
Regular 99¢  
#1351



4 1/2" Blunt Scissors  
Regular 99¢  
#1352



Spindex School Tools  
Regular 3.00  
\$1.97  
#1747



1/2" x 1100' Scotch Transparent Tape  
Regular \$1.25  
#1527  
Check store for details on additional savings



INSTANT Krazy Glue  
Regular 1.95  
\$1.97  
#1494



Webster's Dictionary  
30,000 WORD  
Regular \$1.89  
\$1.99¢  
#2008



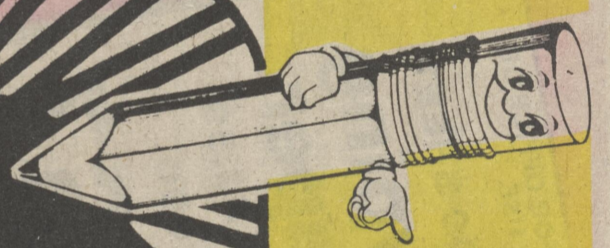
Liquid Paper  
Regular 1.39  
\$1.97¢  
#2062



TOT 50 Stapler  
Regular 2.00  
\$1.39  
#1370



# LOOK WHAT 47¢ ADDS UP TO



FLUORESCENT Hi-Liter  
Liter  
Regular 75¢  
Great Study Aid

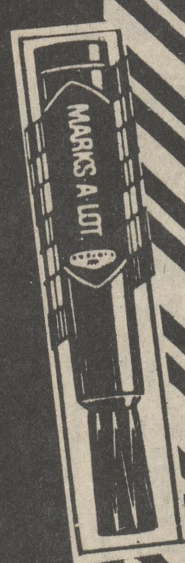
ALSO AVAILABLE IN  
#355 GREEN  
#356 PINK  
#357 ORANGE  
#364 YELLOW



MARKS A LOT Black Markers  
Regular 89¢

PERMANENT MARKER—BUY SEVERAL AND SAVE!


ALSO AVAILABLE IN  
RED #371  
BLUE #372  
GREEN #373



STERLING STAINLESS STEEL Sharpener  
Regular 59¢  
#820



Post It Notes  
3" x 3"  
Regular 69¢  
50 SHEETS  
#3807



YOUR CHOICE  
**47¢**



# BACK TO SCHOOL

1602 AUG 81



BY PAPER MATE  
THE ERASABLE INK PEN  
BY PAPER MATE  
Regular 3/2.94

**97¢** #192

SALE  
Check store for additional savings



**Bic Stic**

9 PACK  
Regular 2.49

**\$117** #243

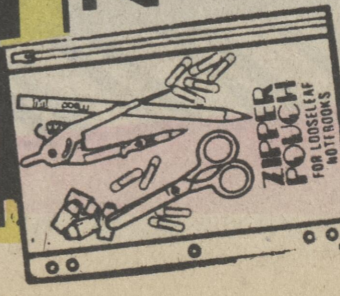
KEEP A SUPPLY HANDY IN DESK  
DRAWER OR BRIEF CASE



**Zipper Pouch**

6 x 9  
Regular 39¢

**37¢** #661



8 X 10 Regular 49¢

**44¢** #662

FITS ANY  
BINDER

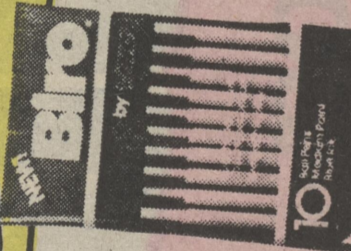
WRITE  
BROS.  
Ball  
Pens



BLACK #201  
BLUE #202

10' PACK  
Regular 2.60  
**\$117**

NEW!  
Biro  
Pens  
BY BIC



Regular 2.49

**\$107** #239

**Magic Marker**

FINE #438  
BROAD #439

10 PACK  
Regular 1.79  
**\$137**

WRITE, DRAW, COLOR



**Scripto Lead Pencil**  
WITH LEAD

Regular 1.09

**87¢** #476

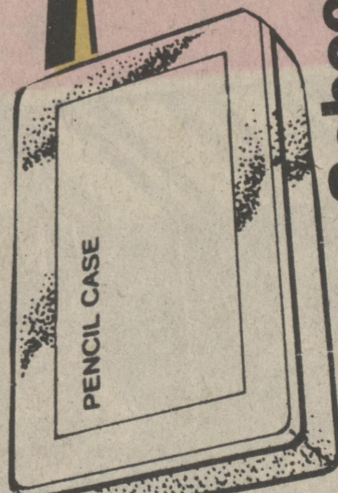


**sterling School Cigar Box**

Regular 1.69

**99¢** #668

STASH AWAY PENCILS—LOOSE  
CRAYONS OR JUST JUNK



**Flourescent Poster Paints**

Regular \$2.89

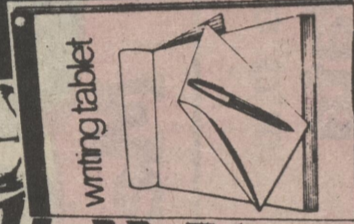
**\$177** #791



**Plain or Ruled**

6 x 9 Writing Tablet  
Regular \$1.05

100 SHEETS  
BUY ONE OF EACH  
#3022 #3023



**Snoopy Glue Stick**

Regular 89c

#1502



**Elmer's 4-oz. School Glue**

Regular \$1.03

#1459

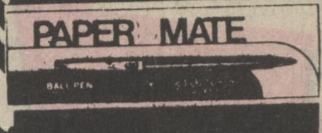


**Paper Mate Pen 98**

Regular \$1.09

#161

THE ORIGINAL PAPER MATE  
PEN AT A BARGAIN PRICE



**Eraser Mate**  
BY PAPER MATE

Regular 1.00

\*Disposable \*Available in Blue, Red,  
and Black \*The Pen That Erases  
Mistakes \*Writes At Any Angle Even  
Upside Down! #195



**Elmers - 4 oz. Regular Glue**

Regular \$1.03

#1452



**Flair Markers**

Regular 89c

BLUE #321  
RED #322  
BLACK #323  
GREEN #324

"Lets you write the way you feel!"

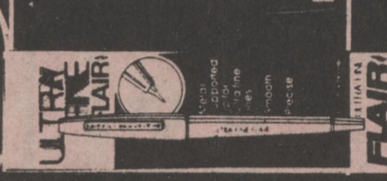


**Ultra Fine Flair**

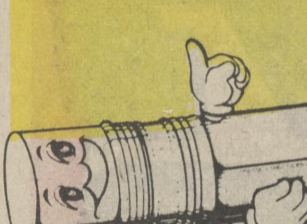
Regular 89c

BLUE #311  
RED #312  
BLACK #312  
GREEN #314

FOR "DOODLE BUGS"  
FOR THE KITCHEN, OFFICE, SCHOOL



**LOOK WHAT 67¢  
ADDS UP TO**



**YOUR CHOICE 67¢**

# BACK TO SCHOOL

1802 AUG 81



## Mead Coupon Offer

SEEN ON TV—SAVE 60¢ WITH COUPON

REG. \$7.00 #2538  
**Data Center** ..... SALE **\$3.97**

REG. \$7.00 #2540  
**Handy Organizer** ..... SALE **\$3.97**

REG. \$1.79 #2573, #2574  
**1/2" or 1"**  
**Poly Binders** ..... **\$1.37**  
ASST. HIGH FASHION COLORS—SUPER FLEXIBLE

REG. 49¢ #2658, #2659  
**3 or 5 Hole Loose Leaf Dividers** ..... **39¢**  
*Your Choice*

TWO PADS IN PACKAGE FOR HOME, OFFICE, KITCHEN  
 REG. \$1.29 #3465  
**8 1/2" X 12 1/2"**  
**Legal Pads** ..... **97¢**

AS SEEN ON TV  
 REG. \$7.00 #3519  
**Flex 3 Folio** ..... **\$3.97**  
SAVE 60¢ WITH COUPON

**Eraser Mate**  
 BY PAPER MATE  
 \*Refillable \*Erases Mistakes As Easily As A Pencil \*Regular \$1.98  
**\$1.17** #194

**Canvas Binders**  
 1 1/2" RING WITH CLIP  
 REG. \$3.00 #2555  
**\$1.97**

**Ring Binder**  
 Canvas Covers

**Meade Trapper Keeper**  
 BY MEAD #2537  
 REG. \$7.00  
**\$3.97**  
AS SEEN ON TV  
 CHECK STORE FOR DETAILS ON ADDITIONAL SAVINGS

**Meade Data Card**  
 SAVE 60¢ WITH THESE Valuable Coupons  
 REG. \$7.00 #2538

**DURANIZER**  
 SAVE 60¢ WITH THESE Valuable Coupons  
 REG. \$7.00 #2540

**Ring Binder**  
 Flexible vinyl covers

**Loose Leaf Indexes**  
 Insertible Tabs

**Legal pad**  
 Premium Quality  
 8 1/2" X 11"

**Meade FLEX 3**  
 CARRYALL NOTEBOOK

**3X5 RULED Index Cards**  
 3 in X 5 in ruled  
 REG. 59¢ #3582  
**37¢**  
 100 CARDS IN PACKAGE

**BICYCLE CHAIN & Combination Lock**  
 REG. \$3.49 #4936  
**\$2.97**

**Combination Lock**  
 REG. \$2.29 #4938  
**\$1.67**