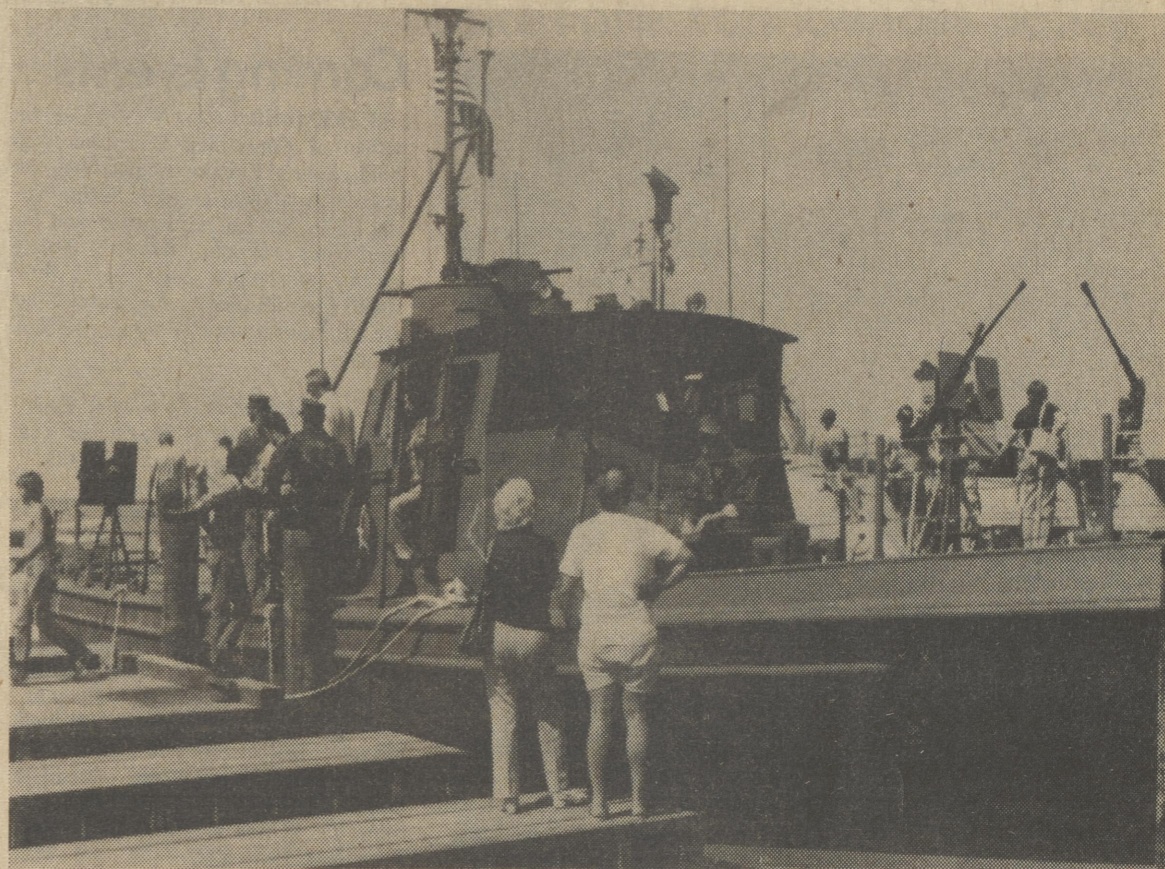




A Skipjack during the 23rd Oyster Fleet Races at Deal Island on Labor Day.



The U.S. Navy was at Deal Island on Monday for the Skipjack Races too.

(See the story on page 7)

# The Harri

10749284HOABD 1  
 HDAG & SONS BOOK BINDERY, INC  
 127 RR AVE  
 SPRINGPORT MI 49284

# Journal

Sixty Seventh Year, No. 11, September 8, 1982

Published Every Wednesday at Harrington, Delaware

Twenty-Five Cents Per Copy

## Primaries set for Saturday, Sept. 11

Democratic and Republican primaries in a number of areas will be conducted this Saturday, September 11. Polls in Kent and Sussex Counties will be open from seven a.m. until 8 p.m.

Over the past week the Journal talked with statewide candidates for attorney general and with candidates in this general area with the following results.

### Attorney General

#### Republican Primary

##### Merritt "Sam" Burke III

Merritt "Sam" Burke III, who has challenged his boss, Richard Gebelein in Saturday's bid for the Republican nominations for Attorney General, states three major concerns in running for the office.

First of all, he thinks the department of justice should have a leader who is responsive to the people. The current Attorney General, he says, is not. Burke claims that Gebelein is hardly ever seen downstate, particularly at the Delaware State Fair.

Secondly Burke feels the office needs a professional person - someone who is aware of what is going on in all areas and can improve the system. He feels he is qualified to fill that bill. Burke does not feel Gebelein has given the attention he should to all areas of the state's criminal justice system.

The third concern he expresses in the need for someone, in the Attorney General's office who will be readily available to the people, who is someone "...you can talk to." He cites a promise he says Gebelein made to hold town meetings throughout the state. The Attorney General, according to Burke, has held very few such meetings downstate.

Burke is also critical of Gebelein in other areas. He claims the upstate record for results in rape cases is a dismal one. Burke says that of the first degree rape cases upstate in a year's time, 74% of the accused walked away free. He admits the numbers of cases handled upstate are a lot larger, but says the downstate record is still better.

Burke also criticizes Gebelein for the attempt to fire him in which he says the Attorney General hired outside legal counsel, Burke says that shows Gebelein does not trust his own staff. He claims the attempt will cost state taxpayers \$60 - \$80,000.

Born in Milford in 1943, Burke was raised in Newark and graduated from Newark High School. In 1965 he received a B.S. in Agriculture from the University of Delaware. From 1966 until 1969 he served in the United States Army Engineer Corps. He completed Law School at the University of Tennessee in 1972 and later served as law clerk for the Honorable Edward C. Duffy, State Solicitor in 1971-72. He was Preceptor under Attorney General W. Laird Stabler in 1972.

Burke's professional credits since then include:

Deputy Attorney General - Department of Justice, Civil Division 1972, Staff Attorney - Governor Peterson's Crime Reduction Task Force 1972-1973  
 Deputy Attorney General - Sussex County 1973 - 1976, Chief Deputy Attorney General - Sussex County 1976-1980, Trial Deputy Attorney General - New Castle County 1981, Felony Screening Deputy Attorney General - New Castle County 1981 - 1982 and Administrative Deputy Attorney General - New Castle County 1982.

He is married to the former Patricia

Meade Thompson. Residents of Lewes, they have four children, ages 1 to 7.

##### Richard S. Gebelein

Completing his first term as Delaware's Attorney General and making a bid for a second, Richard S. Gebelein points to several accomplishments of which he is proud.

During his tenure, Gebelein says, he has "returned professionalism to the office" with efforts to attract and keep experienced people.

Another plus he cites is the claim that for the first time Delaware has begun to attack the problem of organized crime. Gebelein says that was not an enormous problem, but with no attention being given to it, organized crime was beginning to move into the state. Now a number of convictions have served notice that Delaware will crack down.

Cracking down on economic crimes such as embezzlement and recovering dollars lost to the state through such crime is another area in which he has concentrated.

A felony screening approach to cases and a more sensitive rape response are two additional areas in which he says there has been progress. The first refers to weeding out cases in which the evidence is marginal before they go to court with an emphasis on speeding up the time between arrest and final disposition of the case. He says his office has been successful in reducing that time from 120 to 66 days. In the area of rape response, the use of experienced prosecutors and counselors has added up to a more sensitive handling of the cases in terms of victims.

Gebelein would like to see improvement in the area of juvenile justice so that young people in trouble might possibly be turned around at an early age. When he began his term, he reports, deputies in the area for juvenile justice numbered just two for the entire state. Now that is up to five and will increase to six this month.

Gebelein also thinks more should be done in the area of corrections where additional space is needed for minimum security prisoners.

Gebelein says his opponent's (Merritt "Sam" Burke III) charge that 74% of those charged with first degree rape in New Castle County walked out free is simply not true. He says a fairer approach is to look at the record over a three year period and consider both first degree and second degree cases along with those that were dropped because the victim may have chosen not to pursue the matter.

He also defends himself against Burke's charge that he is not seen very much downstate and wonders where Mr. Burke was when he appeared at the ceremonies of the Ellendale Fire Hall and at Caesar Rodney Commencement exercises.

Of Burke's charges that Gebelein spent too much of the taxpayer's money in attempt to fire him, Gebelein says (referring to a particular case) "When you have to explain to a victim's parents why charges were dropped to motor vehicle offenses (from more serious charges) without notification, I consider it money well spent."

Born in Pennsylvania, Gebelein moved with his family to the Wilmington area at an early age. He is a graduate of Salesianum High School and the University of Pittsburg. After completing undergraduate work he went on to Villanova Law School.

In 1970 he accepted a position as a clerk in the Delaware Court of Chan-

cery. He served as Deputy Attorney General for three and a half years and as Solicitor for one year. Then he left the Department of Justice to become Chief Deputy Public Defender for two years and subsequently spent another two and a half in private practice with the Wilmington firm of Wilson and Whittington.

He was first elected Attorney General in 1978.

Gebelein and his wife, Jerri, have a six-month old son, Zachary.

### 32nd Representative District Democratic Primary

#### Edward J. Bennett

Seeking a fourth term in the Delaware House of Representatives, Edward J. Bennett is looking toward the Democratic primary for the 32nd Representative District on Saturday.

Since he was first elected in 1976 Bennett says he has been sponsor or co-sponsor of a major series of legislation. He is particularly concerned with continuing a number of efforts of the state government.

The list would include financial stability and a balanced budget for the state, the continuing effort to provide more jobs and economic opportunity in Kent County, and work toward providing good public education for the state's children. He is especially interested in equalizing educational opportunities in the state's less affluent school districts. Bennett says the state has made definite strides in that last area, but he thinks there is still work to be done.

Bennett supports the idea of continued state financial surpluses and is behind a proposal to require the state to spend no more than 98% of its income.

He points with a measure of pride to several legislative accomplishments in the area of education: funds for gifted and talented classes, provision for classrooms for disruptive students, an elementary guidance project which is trying out three pilot programs - one in

(Continued on page 3)

### Two accepted at Air Force Academy

ARMY AND AIR FORCE HOME-TOWN NEWS - Terrence A. Caskey, son of retired Air Force Master Sgt. and Mrs. Boyd F. Caskey of Rural Route 3, Felton, Del., and James J. Clay, son of Air Force Master Sgt. James J. and Mary F. Clay of Woodside, Del., have been officially accepted into the U.S. Air Force Academy's Cadet Wing as a member of the class of 1986 during the annual acceptance parade.

The parade followed six weeks of rigorous basic cadet training at the Colorado Springs, Colo., academy. Training in military customs and courtesies, drill and physical conditioning, tactical exercises and the firing of weapons introduced the basic cadets to military life under the program.

The academy is four-year educational institution graduating men and women to serve as career Air Force officers. In addition to military training, the academy offers athletics and an academic curriculum which includes basic and engineering sciences, social sciences and the humanities.

Caskey is a graduate of Lake Forest High School, Felton, and Clay is a graduate of Caesar Rodney Senior High School, Camden-Wyoming, Del.



They're rolling again - Drive carefully!

### Harrington Raceway opens Sept. 8th

Harrington Raceway opens Wednesday, Sept. 8th for its 36th consecutive season. And although a whole new crop of youngsters are expected to begin their inaugural career at the popular downstate track, many familiar names will be back to carry on the tradition of the sport. Racing will continue at Harrington until November 13th.

Track management noted the opening Wednesday and Thursday nights have been designated as free nights and everyone will be admitted into the grandstand without charge. In addition following the races on Friday, Sept. 10th, the track has arranged for the popular Cook "N" Good band to play for its race patrons. The Cook "N" Good band, under the direction of Gene Cook, has been playing the Delmarva area for a number of years, but this will be its first trip to a harness track. It's also the track's first venture into providing entertainment other than the racing itself.

Track officials also announce the appointment of George Anthony as announcer for the coming Season. This will be Anthony's first year at Harrington. He is just finishing in the same capacity at Ocean Downs, another harness facility located in Berlin, MD. Herman Brikel will return for his 8th

### Delmarva Power seeks rate increase for cooperatives and municipalities

Delmarva Power & Light Company today asked the Federal Energy Regulatory Commission to increase the rate at which the company sells electricity to cooperatives and municipalities which, in turn, resell that power to individual customers.

The company asked for an overall increase of \$6.2 million above current rates or a 9.7% gross increase -- 5.7%, however, after reflecting fuel savings from the Edge Moor coal conversion. If approved, the increase would become effective about November 1, 1982.

Paul S. Gerritsen, a company vice president, said the requested increase is necessary to pay for past months of inflation and to cover the cost of converting oil-burning generating units at Edge Moor Power Station to coal. "Because today's rates do not reflect the current costs for the goods and

year as Race Secretary at the track. Brikel is charged with planning and putting together each of the 49 nights of racing that will be conducted at Harrington. Assisting Brikel in the Race Secretary's office is Marilyn Abbott. Abbott is one of only a handful of women in the United States who holds a Race Secretary's license issued by the U.S. Trotting Assoc.

Track officials are optimistic about the success of their upcoming Meet and note that there is an abundance of good horses available to race and desiring stall accommodations.

They also feel that the addition of an extra trifecta wager on the first race each night will prove popular with race fans and should boost wagering. Last year a trifecta was conducted on the last race of each night's card and proved successful for the track, thus the reason for the additional trifecta this Season. Exacta and quinella wagers will be taken on other races, in addition to regular win, place, and show bets.

Post time Wednesday thru Saturday will be 8 p.m. and on Sunday the races will get underway an hour and a half earlier at 6:30 p.m. Mondays and Tuesdays have been declared as dark days at the track.

services we must buy to make electricity, we are constantly playing catch-up. We are asking the Commission to set our rates for next year, 1983, to recover past inflation costs and reflect the 1983 costs of providing service," Gerritsen said.

The second key part of the filing is to pay the costs of the Edge Moor coal conversion. The switch from oil to coal saves customers money. While the base rates go up, the fuel adjustment charge will go down to reflect the use of a cheaper fuel.

### Houston mayor resigns

Houston Mayor Virgil Emory, elected just last March, submitted his resignation at the September 2 meeting of the Houston Town Council. Emory, who has been hospitalized recently, cited health as the major reason he felt unable to complete the two year term.

Vice Mayor Jim Emory (no relation to Virgil) will serve until a special election can be held. That election has been set for Oct. 16. Filing will be held on Saturday, September 18, from six until eight p.m. in the Houston Fire Hall.

### Heritage Day will be entertaining

With Harrington's fourth annual Heritage Day celebration just over the horizon, plans are just about complete for a full day of entertainment. Program chairman Cathy Blades has announced the following schedule:

12-12:30 - Linda Gray and Norma Parker, vocal and guitar duo.

12:30 - 1 - Aerobics in Action in Southern Delaware with Diana Rigterink.

1 - 2 - Fashion show - local merchants.

2 - 3 - Senior Center "Jolly Timers" band.

3 - 5 - 4:15 - Diamond State Twirlers (square dance demonstration).

4:30 - 5 - Stoney Creek Cloggers.

5 - 6 - Bob Hemphill's School of Martial Arts (karate, judo, etc.)

6 - 6:30 - Former Lost Orphans - Greg Shrader (lead vocalist), Deloi Moore (lead guitar and a vocalist), Denny Stewart (base).

6:30 - 6:45 - Cultural Arts Council Puppet Show.

6:45 - 7:00 - Barbershop Quartet (7)

7 - 8 - Veda Sereem Middle East Dance Troupe - Hope Popivchak, Mary Lou Melvin and Lynn Donovan.

8 - 11 - Street dance with the Wranglers, a country and western group - Jim and Dee Williams, Chet McColley, Dean McNew (lead guitar) and Pete Collins (drummer). A new group of local young people - Nocturnal Flight with Tommy Lord, Scott Dill, Greg Grimm and Pam Kreer may perform during intermission.

The entertainment is free and will

(Continued on Page 8)

### Mop and bucket brigade needed

Volunteers are needed to man a mop and bucket brigade to help clean up the Harrington tower (otherwise known as the block house) in time for Heritage Day. A clean-up party is scheduled for this Saturday, September 11 beginning at 9 a.m.

Members of the Greater Harrington Historical Society are also welcoming those who may be willing to make donations of cash or materials toward the chain link fence that must be installed.

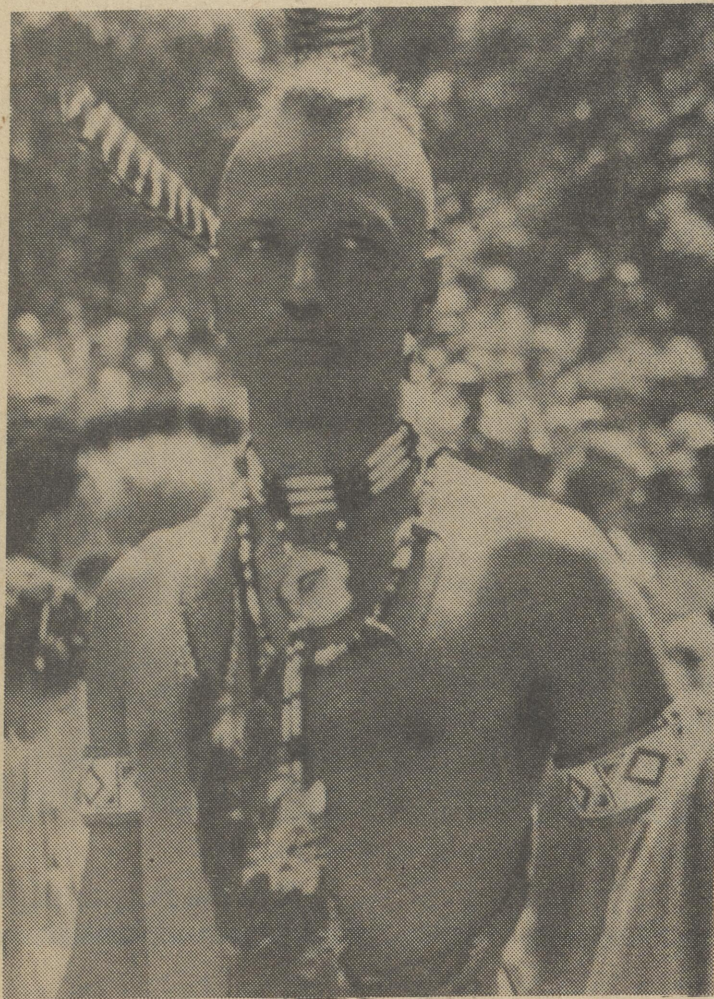
Bryan Hammond of Houston has volunteered his miniature train to be set up in working operation in the block house for Heritage Day and several others have offered model trains or railroad memorabilia.

Those interested can call Grace Welch at 398-3635 or just show up at the tower on Saturday morning ready to work.

### BITS & PIECES

Delaware State College Center for Continuing Education will have on permanent exhibit a 30 x 40 acrylic painting of Sojourner Truth by Kent County Artist Rebecca Raubacher.

Would you believe it? category - A Connecticut firm has announced the production of a "new soft drink for dogs" - a six pack of nutritive enriched, chicken-flavored liquid intended as an addition to dry dog food or as an occasional liquid treat. According to a company executive, "The product originated when it occurred to a group of us that when human beings sit around sipping drinks, our canine companions, until now, have been merely able to stand around panting enviously."



An Iroquois dancer was one of those who took part in the 1981 Nanticoke Powwow. This year's event is set for Sept. 11-12. (Photo by H.G.F.)

SEPT. 11-12 - 1982 Nanticoke Powwow will be held on the property of William and Jean Norwood, RD 297 off Rt. 24 near Oak Orchard. Watch for powwow signs on Rt 24 about 7 miles east of Millsboro and 10 miles west of Rt. 1, Midway. Traditional dancing in Nanticoke native dress is scheduled for noon and 5 p.m. on Saturday and 2 p.m. on Sunday. For further information call the Nanticoke Center at 945-3400 9 a.m. - 4 p.m. weekdays.

### Coming Events

**SEPTEMBER 8** - The Wesley College Office of Continuing Education will hold a Special Evening Registration for persons unable to register during the day. This special registration will be held Wednesday Sept. 8 from 7 - 8 p.m. at the Information Desk on the first floor of the College Center and will be the last opportunity to register for fall courses.

The Kent County Vocational Technical School District announces the following fall courses open to adults.

**At Kent North Campus, Denny's Road, Dover**  
**Commercial Foods** - Tuesday and Thursday 7-10 p.m. beginning Sept. 21, 72 hours, Marcellus Bryant - instructor; Fee - \$50.

**At Kent Center, Woodside**  
**Auto Upholstery & Customizing**, Monday and Wednesday 7-10 p.m. beginning Sept. 20; 12 wks; Michael Warren - instructor; Fee - \$30.

**Greenhouse Management** - Monday and Wednesday 7-10 p.m. beginning Sept. 20; 72 hours; William Masche - instructor; Fee - \$35.

**Small Gasoline Engine Repair** - Tuesday and Thursday, 7-10 p.m. beginning Sept. 21; 12 weeks; Fee \$25.

**Motorcycle Mechanics** - Monday and Wednesday 7-10 p.m. beginning Sept. 20; 12 weeks; James Reedy - instructor Fee \$35.

**Air Frame and Power Plant** (theory only) - Monday and Wednesday 7-10 p.m. beginning Sept. 20; Chartes M. Kane - instructor, Fee \$30.

(All the above courses now registering.)

**General Office Practice Commercial Foods Preparation**

**Retail Salesmanship Security Guard Training** Registration for the above four courses which will start during the week of Sept. 20 will be held at the Adult Education Office, Kent Center, Woodside, daily from Sept. 8-14. For more information about any of the courses, call Mr. Rummell, at 697-3257.

**SEPTEMBER 10-19** - The New Jersey State Fair opens at the Six Flags Great Adventure family theme park in Jackson Sept. 10, and participants already are pampering the babies, pumpkins and physques they hope will be prize winners at the ten-day, Sept. 10-19, event. Combination tickets at \$11.95 will entitle the holder to roam the 10 acres devoted to the fair in addition to unlimited rides, shows and other attractions.

**SEPTEMBER 10-12** - The 16th Maryland Seafood Festival will be held the weekend of Sept. 10, 11 and 12 at Sandy Point State Park near Annapolis. The festival opens at 1 p.m. on Friday, Sept. 10 and at 10 a.m. on Saturday and Sunday, Sept. 11 and 12. Admission is \$2.50 for adults, children under 14 with adults are free. The admission includes free parking and all entertainment is free. The only other cost is your own selection of food and drink. Sandy Point State Park is reached via Route 50 east from Annapolis or Washington, D.C., and is located just north of the bay bridge. From Baltimore take Routes 2 or 3 south to Route 50. From Delaware and N.J., take Route 301 south and cross the bay bridge.

**SEPTEMBER 10-12** - The 16th Maryland Seafood Festival is set for Sept. 10, 11 and 12 at Sandy Point State Park, located at the west end of the Chesapeake Bay Bridge just outside Annapolis. Originally known as The Clam Festival when the event was started in 1965, it has expanded to include all the best of Maryland seafood. In addition to the food there will be music, magic and Mime, skydiving, sailing and marching bands. Endless exhibits and demonstrations will be on hand. Festival hours begin at 1 p.m. Friday, Sept. 10, and at 10 a.m. on Saturday and Sunday, Sept. 11 and 12. Admission is \$2.50 for adults, with children under 14 admitted free. This includes free parking, all the entertainment, walks on the beach and a chance to select and buy your favorite dishes to eat on the site.

**SEPT. 11** - The newly remodeled visitor center at Blackwater National Wildlife Refuge will be open again for weekends beginning Saturday, Sept. 11. The center will be open from 7:30-4:00 p.m. every day and films will be shown every hour on the hour. Two new films have been added to the list and are entitled "The Predators" and

**SEPTEMBER 9** - There will be a meeting of the Kent County Heart Association Board of Directors on Thursday, September 9, 1982 at 7:30 p.m. The meeting will take place at Johnathan's Restaurant in Dover. The public is welcome and invited to attend.

**SEPTEMBER 9-24** - The Craft Guide, the Delaware State Arts Council and the Sussex County Arts Council present a statewide exhibition at Delaware Technical and Community College in Georgetown, DE. The exhibition which includes the works of 34 craftsmen residing in and around Delaware will be open to the public from Sept. 9 thru Sept. 24 at the Sussex County Arts located at Delaware Technical and Community College in Georgetown. For additional information about the exhibition call Robin Lewis at the Sussex County Arts Council, 856-5421.

**SEPTEMBER 10-12** - The 16th Annual Maryland Seafood Festival will be held the weekend of Sept. 10, 11 and 12 at Sandy Point State Park near Annapolis. The festival opens at 1 p.m. on Friday, Sept. 10 and at 10 a.m. on Saturday and Sunday, Sept. 11 and 12. Admission is \$2.50 for adults, children under 14 with adults are free. The admission includes free parking and all entertainment is free. The only other cost is your own selection of food and drink. Sandy Point State Park is reached via Route 50 east from Annapolis or Washington, D.C., and is located just north of the bay bridge. From Baltimore take Routes 2 or 3 south to Route 50. From Delaware and N.J., take Route 301 south and cross the bay bridge.

**SEPTEMBER 10-12** - The 16th Maryland Seafood Festival is set for Sept. 10, 11 and 12 at Sandy Point State Park, located at the west end of the Chesapeake Bay Bridge just outside Annapolis. Originally known as The Clam Festival when the event was started in 1965, it has expanded to include all the best of Maryland seafood. In addition to the food there will be music, magic and Mime, skydiving, sailing and marching bands. Endless exhibits and demonstrations will be on hand. Festival hours begin at 1 p.m. Friday, Sept. 10, and at 10 a.m. on Saturday and Sunday, Sept. 11 and 12. Admission is \$2.50 for adults, with children under 14 admitted free. This includes free parking, all the entertainment, walks on the beach and a chance to select and buy your favorite dishes to eat on the site.

**SEPT. 11** - The newly remodeled visitor center at Blackwater National Wildlife Refuge will be open again for weekends beginning Saturday, Sept. 11. The center will be open from 7:30-4:00 p.m. every day and films will be shown every hour on the hour. Two new films have been added to the list and are entitled "The Predators" and

**SEPTEMBER 10-12** - The 16th Maryland Seafood Festival is set for Sept. 10, 11 and 12 at Sandy Point State Park, located at the west end of the Chesapeake Bay Bridge just outside Annapolis. Originally known as The Clam Festival when the event was started in 1965, it has expanded to include all the best of Maryland seafood. In addition to the food there will be music, magic and Mime, skydiving, sailing and marching bands. Endless exhibits and demonstrations will be on hand. Festival hours begin at 1 p.m. Friday, Sept. 10, and at 10 a.m. on Saturday and Sunday, Sept. 11 and 12. Admission is \$2.50 for adults, with children under 14 admitted free. This includes free parking, all the entertainment, walks on the beach and a chance to select and buy your favorite dishes to eat on the site.

**SEPTEMBER 10-12** - The 16th Maryland Seafood Festival is set for Sept. 10, 11 and 12 at Sandy Point State Park, located at the west end of the Chesapeake Bay Bridge just outside Annapolis. Originally known as The Clam Festival when the event was started in 1965, it has expanded to include all the best of Maryland seafood. In addition to the food there will be music, magic and Mime, skydiving, sailing and marching bands. Endless exhibits and demonstrations will be on hand. Festival hours begin at 1 p.m. Friday, Sept. 10, and at 10 a.m. on Saturday and Sunday, Sept. 11 and 12. Admission is \$2.50 for adults, with children under 14 admitted free. This includes free parking, all the entertainment, walks on the beach and a chance to select and buy your favorite dishes to eat on the site.

**SEPTEMBER 10-12** - The 16th Maryland Seafood Festival is set for Sept. 10, 11 and 12 at Sandy Point State Park, located at the west end of the Chesapeake Bay Bridge just outside Annapolis. Originally known as The Clam Festival when the event was started in 1965, it has expanded to include all the best of Maryland seafood. In addition to the food there will be music, magic and Mime, skydiving, sailing and marching bands. Endless exhibits and demonstrations will be on hand. Festival hours begin at 1 p.m. Friday, Sept. 10, and at 10 a.m. on Saturday and Sunday, Sept. 11 and 12. Admission is \$2.50 for adults, with children under 14 admitted free. This includes free parking, all the entertainment, walks on the beach and a chance to select and buy your favorite dishes to eat on the site.

**SEPTEMBER 10-12** - The 16th Maryland Seafood Festival is set for Sept. 10, 11 and 12 at Sandy Point State Park, located at the west end of the Chesapeake Bay Bridge just outside Annapolis. Originally known as The Clam Festival when the event was started in 1965, it has expanded to include all the best of Maryland seafood. In addition to the food there will be music, magic and Mime, skydiving, sailing and marching bands. Endless exhibits and demonstrations will be on hand. Festival hours begin at 1 p.m. Friday, Sept. 10, and at 10 a.m. on Saturday and Sunday, Sept. 11 and 12. Admission is \$2.50 for adults, with children under 14 admitted free. This includes free parking, all the entertainment, walks on the beach and a chance to select and buy your favorite dishes to eat on the site.

**SEPTEMBER 10-12** - The 16th Maryland Seafood Festival is set for Sept. 10, 11 and 12 at Sandy Point State Park, located at the west end of the Chesapeake Bay Bridge just outside Annapolis. Originally known as The Clam Festival when the event was started in 1965, it has expanded to include all the best of Maryland seafood. In addition to the food there will be music, magic and Mime, skydiving, sailing and marching bands. Endless exhibits and demonstrations will be on hand. Festival hours begin at 1 p.m. Friday, Sept. 10, and at 10 a.m. on Saturday and Sunday, Sept. 11 and 12. Admission is \$2.50 for adults, with children under 14 admitted free. This includes free parking, all the entertainment, walks on the beach and a chance to select and buy your favorite dishes to eat on the site.

**SEPTEMBER 10-12** - The 16th Maryland Seafood Festival is set for Sept. 10, 11 and 12 at Sandy Point State Park, located at the west end of the Chesapeake Bay Bridge just outside Annapolis. Originally known as The Clam Festival when the event was started in 1965, it has expanded to include all the best of Maryland seafood. In addition to the food there will be music, magic and Mime, skydiving, sailing and marching bands. Endless exhibits and demonstrations will be on hand. Festival hours begin at 1 p.m. Friday, Sept. 10, and at 10 a.m. on Saturday and Sunday, Sept. 11 and 12. Admission is \$2.50 for adults, with children under 14 admitted free. This includes free parking, all the entertainment, walks on the beach and a chance to select and buy your favorite dishes to eat on the site.

**SEPTEMBER 10-12** - The 16th Maryland Seafood Festival is set for Sept. 10, 11 and 12 at Sandy Point State Park, located at the west end of the Chesapeake Bay Bridge just outside Annapolis. Originally known as The Clam Festival when the event was started in 1965, it has expanded to include all the best of Maryland seafood. In addition to the food there will be music, magic and Mime, skydiving, sailing and marching bands. Endless exhibits and demonstrations will be on hand. Festival hours begin at 1 p.m. Friday, Sept. 10, and at 10 a.m. on Saturday and Sunday, Sept. 11 and 12. Admission is \$2.50 for adults, with children under 14 admitted free. This includes free parking, all the entertainment, walks on the beach and a chance to select and buy your favorite dishes to eat on the site.

**SEPTEMBER 10-12** - The 16th Maryland Seafood Festival is set for Sept. 10, 11 and 12 at Sandy Point State Park, located at the west end of the Chesapeake Bay Bridge just outside Annapolis. Originally known as The Clam Festival when the event was started in 1965, it has expanded to include all the best of Maryland seafood. In addition to the food there will be music, magic and Mime, skydiving, sailing and marching bands. Endless exhibits and demonstrations will be on hand. Festival hours begin at 1 p.m. Friday, Sept. 10, and at 10 a.m. on Saturday and Sunday, Sept. 11 and 12. Admission is \$2.50 for adults, with children under 14 admitted free. This includes free parking, all the entertainment, walks on the beach and a chance to select and buy your favorite dishes to eat on the site.

"America's Wetlands". Other public use facilities on Blackwater include a five mile Wildlife Drive, two walking trails and an observation tower. The trails and Drive are open dawn until dusk. Bicyclists are reminded that the last section of the Wildlife Drive is closed to bicycling from September 1 thru March 31 in order to reduce the disturbance to waterfowl using the area. For further information write Refuge Manager, Blackwater National Wildlife Refuge, Route 1, Box 121, Cambridge, MD 21613 or call 301-228-2677.

**SEPT. 11** - The 2nd annual Rehoboth Rol-A-Cross will be held on Sept. 11th from 10 a.m. to 1 p.m. The marathon begins at Canal Street and Columbia Avenue in Rehoboth Beach. All proceeds from the outdoor roller skating fund raising event will benefit the American Red Cross Distaster Services. For a \$6 registration fee, participants will receive a marathon t-shirt, refreshments, entertainment by a mobile disc jockey, and skates if needed. Fund raisers will be eligible to win one of the many prizes to be offered in 5 categories. To Register call the Red Cross in Dover, 674-2444, Georgetown 856-7044 or Wilmington 428-3600. Registration day of event will be \$8. Raindate Sunday, Sept. 12th. This event is sponsored by the Rusty Rudder (Dewey Beach) and the Country Squire (Rehoboth) Restaurants and 96 Rock FM Radio Station.

**SEPTEMBER 11** - Kent County Levy Court through the Parks and Recreation Department has several openings for the trip to Hersheypark on Saturday, September 11. The motorcoach bus will depart from the Kent County Administration Building at 7:30 a.m. and will return at approximately 8:00 p.m. Fee is \$18.00 and includes transportation and access to all rides (except those with height restrictions). The day at Hersheypark will be filled with excitement and fun for the entire family. Enjoy the dozens of rides, live shows, original music revues and "environmental" zoo. The trip will also include a ride through "Hershey's Chocolate World". To register telephone the Kent County Recreation Office at 736-2090.

**SEPTEMBER 11** - On Saturday, September 11, 1982 the Delaware Nurses' Association is sponsoring a Fall fashion show and makeup demonstration to be held in Bambergers Restaurant in the Christiana Mall. The event will begin at 9 a.m. and last until 10:30 a.m. A continental breakfast will be served. Tickets are \$5.00 per person. Call 655-6297.

**SEPTEMBER 11 & 12** - The Delaware Zoological Society and the New Castle County Department of Parks and Recreation will be holding their annual celebration of "Zippy Zoo Days" on September 11 & 12, from 10 a.m. to 5 p.m. This event is co-sponsored by the Wilmington Jaycee's. There will be music by the Johannes Brass, magic by Meatballs the Clown, and mime and juggling by the American Juggolos. Foods will also be available. Visitors can also have a polaroid picture taken of them holding a macaw or python.

**SEPTEMBER 11 & 12** - The 22nd annual Brandywine Arts Festival will be held in Josephine Gardens on Saturday and Sunday, September 11th and 12th from 10 a.m. to 6 p.m. The admission is free. Raindate is the following weekend. Over 150 artists and photographers, along with 250 craftspeople and sculptors participate in this event. Entertainment includes the Banjo Dusters Saturday from 12:30 - 2:30 p.m. and the blue grass Waste Band on Sunday from 12:30 - 2:30. Each day also features an exciting art auction at 3:00 with Barry Rudnick as auctioneer. A variety of food and refreshments will be available.

**SEPTEMBER 12** - The Dickinson Theatre Organ Society announces a new learning experience for the young and a nostalgic afternoon for the elders of the community - an old fashioned, fun filled Silent Film Festival. "Robin-hood" played by Douglas Fairbanks Sr. and produced in 1922, will be presented to the public at 3 p.m. Sunday, Sept. 12th at Dickinson High School Auditorium, 1801 Milltown Road, Wilmington. The film will be accompanied by Marc Chevan, playing the mighty Kimball Theatre Organ. Just as in the old days, there will be door prizes. Donations \$1.50 at the door.

**SEPTEMBER 18** - Harrington's 4th Annual Heritage Day. Watch the Journal for details. (Continued on page 8)

**CORRECTIONS**  
**READ YOUR AD THE FIRST DAY IT APPEARS!** Any corrections to be made must be called from 8 a.m. to 9 a.m. the day after your ad appears. One (1) extra insertion will be made at no charge for an error not the fault of an advertiser. The Harrington Journal WILL NOT be responsible for more than one (1) insertion.

**SEPTEMBER 11 & 12** - The 22nd annual Brandywine Arts Festival will be held in Josephine Gardens on Saturday and Sunday, September 11th and 12th from 10 a.m. to 6 p.m. The admission is free. Raindate is the following weekend. Over 150 artists and photographers, along with 250 craftspeople and sculptors participate in this event. Entertainment includes the Banjo Dusters Saturday from 12:30 - 2:30 p.m. and the blue grass Waste Band on Sunday from 12:30 - 2:30. Each day also features an exciting art auction at 3:00 with Barry Rudnick as auctioneer. A variety of food and refreshments will be available.

**SEPTEMBER 12** - The Dickinson Theatre Organ Society announces a new learning experience for the young and a nostalgic afternoon for the elders of the community - an old fashioned, fun filled Silent Film Festival. "Robin-hood" played by Douglas Fairbanks Sr. and produced in 1922, will be presented to the public at 3 p.m. Sunday, Sept. 12th at Dickinson High School Auditorium, 1801 Milltown Road, Wilmington. The film will be accompanied by Marc Chevan, playing the mighty Kimball Theatre Organ. Just as in the old days, there will be door prizes. Donations \$1.50 at the door.

**SEPTEMBER 18** - Harrington's 4th Annual Heritage Day. Watch the Journal for details. (Continued on page 8)

**CORRECTIONS**  
**READ YOUR AD THE FIRST DAY IT APPEARS!** Any corrections to be made must be called from 8 a.m. to 9 a.m. the day after your ad appears. One (1) extra insertion will be made at no charge for an error not the fault of an advertiser. The Harrington Journal WILL NOT be responsible for more than one (1) insertion.

**SEPTEMBER 11 & 12** - The 22nd annual Brandywine Arts Festival will be held in Josephine Gardens on Saturday and Sunday, September 11th and 12th from 10 a.m. to 6 p.m. The admission is free. Raindate is the following weekend. Over 150 artists and photographers, along with 250 craftspeople and sculptors participate in this event. Entertainment includes the Banjo Dusters Saturday from 12:30 - 2:30 p.m. and the blue grass Waste Band on Sunday from 12:30 - 2:30. Each day also features an exciting art auction at 3:00 with Barry Rudnick as auctioneer. A variety of food and refreshments will be available.

**SEPTEMBER 12** - The Dickinson Theatre Organ Society announces a new learning experience for the young and a nostalgic afternoon for the elders of the community - an old fashioned, fun filled Silent Film Festival. "Robin-hood" played by Douglas Fairbanks Sr. and produced in 1922, will be presented to the public at 3 p.m. Sunday, Sept. 12th at Dickinson High School Auditorium, 1801 Milltown Road, Wilmington. The film will be accompanied by Marc Chevan, playing the mighty Kimball Theatre Organ. Just as in the old days, there will be door prizes. Donations \$1.50 at the door.

**SEPTEMBER 18** - Harrington's 4th Annual Heritage Day. Watch the Journal for details. (Continued on page 8)

**CORRECTIONS**  
**READ YOUR AD THE FIRST DAY IT APPEARS!** Any corrections to be made must be called from 8 a.m. to 9 a.m. the day after your ad appears. One (1) extra insertion will be made at no charge for an error not the fault of an advertiser. The Harrington Journal WILL NOT be responsible for more than one (1) insertion.

**SEPTEMBER 11 & 12** - The 22nd annual Brandywine Arts Festival will be held in Josephine Gardens on Saturday and Sunday, September 11th and 12th from 10 a.m. to 6 p.m. The admission is free. Raindate is the following weekend. Over 150 artists and photographers, along with 250 craftspeople and sculptors participate in this event. Entertainment includes the Banjo Dusters Saturday from 12:30 - 2:30 p.m. and the blue grass Waste Band on Sunday from 12:30 - 2:30. Each day also features an exciting art auction at 3:00 with Barry Rudnick as auctioneer. A variety of food and refreshments will be available.

**SEPTEMBER 12** - The Dickinson Theatre Organ Society announces a new learning experience for the young and a nostalgic afternoon for the elders of the community - an old fashioned, fun filled Silent Film Festival. "Robin-hood" played by Douglas Fairbanks Sr. and produced in 1922, will be presented to the public at 3 p.m. Sunday, Sept. 12th at Dickinson High School Auditorium, 1801 Milltown Road, Wilmington. The film will be accompanied by Marc Chevan, playing the mighty Kimball Theatre Organ. Just as in the old days, there will be door prizes. Donations \$1.50 at the door.

**SEPTEMBER 18** - Harrington's 4th Annual Heritage Day. Watch the Journal for details. (Continued on page 8)

**CORRECTIONS**  
**READ YOUR AD THE FIRST DAY IT APPEARS!** Any corrections to be made must be called from 8 a.m. to 9 a.m. the day after your ad appears. One (1) extra insertion will be made at no charge for an error not the fault of an advertiser. The Harrington Journal WILL NOT be responsible for more than one (1) insertion.

**SEPTEMBER 11 & 12** - The 22nd annual Brandywine Arts Festival will be held in Josephine Gardens on Saturday and Sunday, September 11th and 12th from 10 a.m. to 6 p.m. The admission is free. Raindate is the following weekend. Over 150 artists and photographers, along with 250 craftspeople and sculptors participate in this event. Entertainment includes the Banjo Dusters Saturday from 12:30 - 2:30 p.m. and the blue grass Waste Band on Sunday from 12:30 - 2:30. Each day also features an exciting art auction at 3:00 with Barry Rudnick as auctioneer. A variety of food and refreshments will be available.

**SEPTEMBER 12** - The Dickinson Theatre Organ Society announces a new learning experience for the young and a nostalgic afternoon for the elders of the community - an old fashioned, fun filled Silent Film Festival. "Robin-hood" played by Douglas Fairbanks Sr. and produced in 1922, will be presented to the public at 3 p.m. Sunday, Sept. 12th at Dickinson High School Auditorium, 1801 Milltown Road, Wilmington. The film will be accompanied by Marc Chevan, playing the mighty Kimball Theatre Organ. Just as in the old days, there will be door prizes. Donations \$1.50 at the door.

**SEPTEMBER 18** - Harrington's 4th Annual Heritage Day. Watch the Journal for details. (Continued on page 8)

**CORRECTIONS**  
**READ YOUR AD THE FIRST DAY IT APPEARS!** Any corrections to be made must be called from 8 a.m. to 9 a.m. the day after your ad appears. One (1) extra insertion will be made at no charge for an error not the fault of an advertiser. The Harrington Journal WILL NOT be responsible for more than one (1) insertion.

**BARROS, McNAMARA & SCANLON**  
 has opened a branch office in Milford

**RONALD J. PRISCO, Resident Attorney**

The firm will engage in civil and criminal practice including divorce, custody, support, adoption, personal injury, workman's compensation, corporations, collections, traffic violations, landlord/tenant, commercial law, bankruptcy, real estate, wills and estates.

Loockerman & State Sts.  
 115 N. Walnut Street P.O. Box 1298  
 Milford, Delaware 19963 Dover, Delaware 19901  
 (302) 422-8060 (302) 734-8400

Structuring your future and the future of your community!

With a solid community base and the professional banking "know-how", we've the brick and mortar and "do it all" ability to help build a better community for all and a constructive, solidly secure financial future for each of our customers. Whether we're helping a citizens' group save a decaying neighborhood, making a young couple's dream come true, or teaming with business to create new community jobs, we can structure your future and the future of your community. Come in today and consult with one of our banking experts for a blueprint to your financial security.

**The Peoples Bank of Harrington**  
 "The Friendly Bank"

Clark-Hanley St. 398-3256 Member FDIC

**Farrow Realty**  
 17 Commerce St. Harrington, DE  
 (302) 398-3455  
 Harry G. Farrow, Jr. Broker

**Harrington**

- Small two-story frame home. Needs work. \$7500.
- Two-story older home in well kept residential area. Aluminum siding and large city lot. \$15,000 or make offer.
- Two-story frame dwelling. 7 rooms, bath and a half. Asking \$15,000. Nice neighborhood.
- Large two-story dwelling in real good condition. 9 rooms, bath up and half bath down. Asking \$25,000.
- A two-unit frame dwelling separate entrances. High return on investment. Asking \$13,500.
- Large two-story frame dwelling containing two separate units. Garage on well shaded lot. Real good condition, high income, good rental investment. Asking \$35,000.

...at the Fairgrounds  
 September 8 - November 13 - Harrington Raceway, Fall harness meet.

**HARRINGTON JOURNAL**  
 HARRY G. FARROW, JR. USPS-235940  
 Editor & Publisher  
 ANNE PALADINO, General Manager

THE HARRINGTON JOURNAL (USPS 235940) is published every Wednesday by THE HARRINGTON JOURNAL, P.O. Box 238, 19 Commerce St., Harrington, DE 19962. Second Class postage paid at Harrington, DE. ADDITIONAL ENTRY OFFICE AT DOVER, DE 19801 POSTMASTER: Send address change to THE HARRINGTON JOURNAL, P.O. Box 238, Harrington, DE 19962. \$8.50 per year IN STATE, \$10.00 per year, OUT OF STATE.

Office of Publication  
 17 Commerce Street  
 Harrington, DE 19962  
 1-302-398-3206

**SEPTEMBER 18** - Harrington's 4th Annual Heritage Day. Watch the Journal for details. (Continued on page 8)

**CORRECTIONS**  
**READ YOUR AD THE FIRST DAY IT APPEARS!** Any corrections to be made must be called from 8 a.m. to 9 a.m. the day after your ad appears. One (1) extra insertion will be made at no charge for an error not the fault of an advertiser. The Harrington Journal WILL NOT be responsible for more than one (1) insertion.

BUSINESS DIRECTORY					
<b>CLEANERS</b> 10-6 Let Capitol Cleaners & Launderers, Inc. Help you get your clothes ready for school. Fur & Wool storage. Four locations & Free pick up & delivery. 674-0500 DOVER, DE	<b>HOME SALES</b> 9-22 HIGH POINT HOME SALES INC. For Over 20 Years. THE BEST IN THE STATE FOR LESS. All types of Manufactured Housing. 5 miles S. DAFB, Rt. 113 and 113A	<b>MUSIC</b> TF B&B Music. Hours: Mon-Thurs. 9-6, Fri. 9-9, Sat. 9-5. CONN SELMER LUDWIG CABLE SOMMER WURLITZER CURRIER. 205 S. Dual Highway Camden, Delaware 19934 Phone: (302) 697-2155	<b>AUTO</b> 9-15 Fitzgerald's Auto Salvage. Top Scrap Prices For Autos - Metals - Batteries - Industrial Scrap, Etc. Remember, Jesus Recycles People. We Recycle Cars. Sussex 856-3994 Lincoln 422-7584	<b>COUNSELING</b> 9-8 KENT COUNTY COUNSELING SERVICES CENTER FOR SUBSTANCE ABUSE TREATMENT-PREVENTION - INFORMATION - 736-4548. 811 S. GOV. AVE. DOVER, DEL. 19901	<b>SEAFOOD</b> TF "CRABS" Live or Steamed. Complete Line of Fresh & Frozen OCEAN FRESH SEAFOOD. ROUTE 13 HARRINGTON, DELAWARE. Fresh Fish Daily 398-3874
<b>MOBILE HOME LOTS</b> 9-8 HIGH POINT MOBILE HOME PARK. DELUXE MOBILE HOME LIVING. LARGE LOTS • PLAYGROUNDS • CONVENIENT LOCATION • POOL • Laundromat. U.S. 113&113A Frederica. 335 5444	<b>FURNITURE</b> 10-6 BIG DIPPER FURNITURE STRIPPING. Road 370-Near Kent Vo-Tech WOODSIDE, DEL. Phone 302-697-3550	<b>EQUIPMENT</b> TF TAYLOR & MESSICK, INC. JOHN DEERE FARM EQUIPMENT LAWN AND GARDEN EQUIPMENT. Sales and Service By Two-Way Radio. Phone 398-3729 Harrington, DE	<b>RESTAURANT</b> 9-15 ORIENT EXPRESS. Lunch • Dinner • Take-Out. 530 Bay Rd., Dover 674-8410	<b>COINS</b> 9-8 CASH FOR YOUR SILVER COINS (prior 1965). Sterling Silver. CLAD HALF DOLLARS (1965-1969). Certified Wts. to within 0.1 oz. of a gram. The Dover Army/Navy Store. Call 736-1959 for current prices.	<b>THRIFT SHOP</b> 10-6 NEARLY NEW BOUTIQUE Thrift Shops. New Fall Arrivals Daily. Many Items Still 1/2 Price. MILFORD 422-6856 CAMDEN 697-6866
<b>ROOFING REPAIR</b> 9-8 Don't live with a drip. Let us solve your roof problems. Able Roofing & Repair Co. 697-3783. Call any time for free estimates.	<b>PHOTOGRAPHIC SPECIALIST</b> 9-8 RPS Studio. Photographic Specialist. 110 N. Washington St. Milford, Delaware 19963. (302) 422-5532. Portraits • Weddings Copy & Restoration	<b>JANITORIAL</b> 10-6 Reliable Janitorial & Carpet Cleaning Services. Office Cleaning • Floor Stripping • Window Cleaning. 422-6301 Free Estimates	<b>CONCRETE-SAND</b> TF Stayton's Sand & Gravel, Inc. Concrete & Mortar Sand Topsoil Stone. Select & Regular Fill Dirt. Delivered or Loaded on Your Truck. 281-8128	<b>BUILDING SUPPLIES</b> 9-15 Woodside Surplus Sales. Lumber, Windows, Siding, Doors, Molding, Plywood, Roofing, Insulation, Refinishing, Paneling, Everything for the Builder & Homeowner. 3/4 M. South of Woodside Traffic Light on S. Bound Lane of U.S. 13. Weekday: 8-5 Sat. 8-1 284-4134	<b>FUEL OIL</b> 10-6 Peninsula Oil Co. Fuel Oil, Kerosene, Gasoline & Burner Service. 24Hour Service for Regular Customers. Radio Dispatch Truck. Automatic Delivery of Oil. Level Payment Plans Available. Shaw Ave. & Rt. 13, Harrington, De. 398-8344

## Primaries

[continued from page 1]

each county - this year (The Kent County pilot project will be located at Lake Forest North Elementary at Felton), and upgrading basic skills education in the state.

A native of Kent County, Bennett is a graduate of Dover High School and the University of Delaware where he earned a bachelors degree in business administration and a masters in personnel. He is President of Bennett Security Service which, among many other clients, serves Harrington Raceway. The business was started by his father John Bennett.

He is associated with Delaware Veterans, Ducks Unlimited, the Kent General Hospital board, the Kent County Heart Association and the Cancer Society. He has also helped with Pop Warner football and Little League and is a member of the University of Delaware Alumni and the Friends of Wesley College.

### William P. McGlumphy

Returning the principles of the peoples party, the Democratic party, to the worker is high priority for William P. McGlumphy who feels his opponent's voting record is the major issue in the primary. He is concerned that Bennett's record in legislative hall has not been "very compassionate" toward workers and consumers.

Specifically McGlumphy points toward House Bill 200, co-sponsored by Bennett. The Workers Compensation Bill, supported by the State Chamber of Commerce, he says, would have effectively stripped many of their compensation rights by requiring the "average" worker to earn \$31,000 a year.

He also cites his opponent's support of an amendment which would have delayed state unemployment benefits by one week. With unemployment at 10%, he indicates that would have meant hardship for many.

McGlumphy further mentions Bennett's vote to abolish the Public Advocate's office set up to protect consumers and a vote against declaring 1981 the Year of the Disabled Person in Delaware. He says he is puzzled by Bennett's negative vote in that resolution.

If elected, McGlumphy would like to be an active, visible representative of the people in his district. Toward that end he says he would work to set up citizen advisory groups who could make their concerns known.

Originally from Pittsburg, McGlumphy is a graduate of California State College of Pennsylvania with a B.A. in English. He earned a Masters degree in education in the field of secondary English at Salisbury State College. He has taught high school English in the Capital School District in Dover since 1971. Before that he taught in schools in Rockville, Maryland, and Pittsburgh Pennsylvania. He has also been a part-time instructor of the Del Tech Terry Campus.

McGlumphy is a member of the Mayfair-Crossgates-Wedgewood Civic Association. In the past he has served as a volunteer counselor at Camp Lenape (a camp for the handicapped) and an advisor to Delaware Youth for the Handicapped in Kent County.

He and his wife Stephanie are active in Holy Cross Church. They have three children, ages seven, five and three.

### 36th Representative District Republican Primary

#### L. Hayes Dickerson

L. Hayes Dickerson, who is looking for the Democratic nomination in the 36th Representative District, confesses to a lifetime of interest in politics. That interest was increased by his years as editor of *The Chronicle* in Milford. He has never before run for office, but says when he turned 60 in August, he decided the time had better be "now".

Dickerson says he is most concerned with the high cost of government, and is anxious to see reduction in programs where it is possible to cut waste and save dollars. Dickerson also thinks it important that Washington relinquish-

es control of programs that can be returned to the states.

He supports the efforts of the current administrations, both state and federal to bring about financial stability at the state level. In particular, he cites the recent AA credit rating given Delaware, a big turn around from a few years ago when it was rated among the lowest.

Dickerson would also give top priority to educational programs. He has been especially interested in education since he covered both Milford and Lake Forest School Boards during his time with *The Chronicle*. He thinks science and computer programs need emphasis but says the schools are on the "right track" in providing these programs.

Creation of jobs and economic opportunities as well as the use of leisure time are other areas in which he expresses concern.

Born and raised in Milford, Dickerson is a graduate of Milford High School and the University of Delaware. From the latter, he received a degree in business administration. He retired from the Air Force after 20 years in 1969 after serving a second tour of duty with the Pentagon. He held the rank of Lt. Colonel. His service years included duty during World War II, Korea and Vietnam.

For nine years Dickerson was editor of *The Chronicle*. He is now publisher of the *Kent & Sussex Shopper*, the product of the Blue Hen Publishing Company. His wife, the former Elaine Townsend, is news director for the publication.

In the area of community involvement he has served as President of the Milford Chamber of Commerce, is vice chairman of the Advisory Board of Avenue United Methodist Church and is a former member of the Lions Club. Dickerson was also active with Save Our Shores, an organization concerned with preservation of Delaware's coast with the University of Delaware's Marine Studies - Sea Grant - program and with fund raising for Delaware Technical and Community College.

He and his wife have three daughters and five grandchildren.

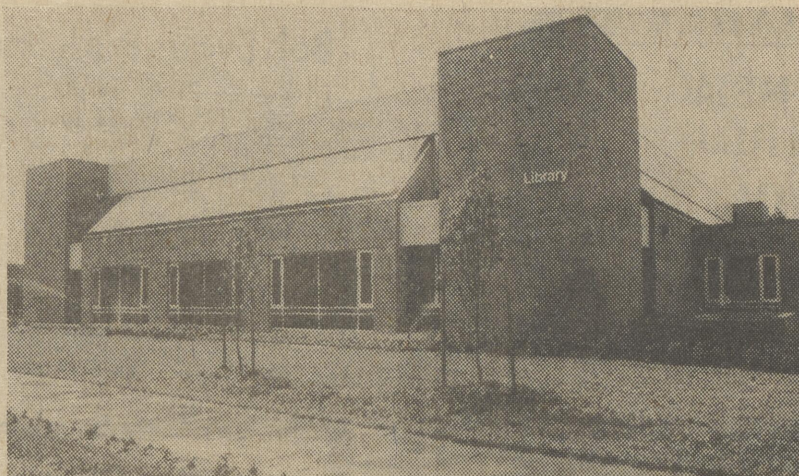
#### Samuel R. Wilson, Jr.

Samuel R. Wilson, Jr. describes himself as a "middle-of-the-road" Republican who subscribes to the party's traditional conservative philosophy. He is especially concerned with the plight of "farmers and businessmen trying to make a decent living." Government, he thinks, should make life easier by getting out of a lot of areas where private enterprise can do the job better. He believes in the free enterprise system if it is allowed to operate.

If he is elected, Wilson says he will take seriously the job of representing the people in his district by bringing their concerns to state government and applying the same principles of careful planning and sound management he uses as a farmer and a businessman to the use of their tax dollars. Government he feels, can still "trim some fat" from its operations.

As a farmer who has also been involved in the trucking industry (for Preston Trucks) he would like to see regulations governing the trucks which transport most of the nation's goods be made uniform throughout the country. The added expense caused by unequal laws, he says, is passed down to consumers. He thinks perhaps some movement in the direction of fairer laws for truckers could start in Delaware.

A native of Sussex County and a graduate of Georgetown High School (before consolidation), Wilson owns and operates the farm that has been in his family for at least 150 years. His great-grandfather, Elijah, had the farm, and he is the fourth generation to



The new library complex opened on June 21 at the Georgetown campus of Delaware Technical and Community College will be dedicated on September 14.

## DuPont to speak as Del Tech dedicates new library

GEORGETOWN - Gov. Pierre S. du Pont will be the guest of honor at dedication ceremonies on Sept. 14 for the new library complex recently completed on the Southern Campus of Delaware Technical & Community College (DT&CC), Georgetown, Southern Campus Director Jack F. Owens announced today.

Ceremonies, set to begin at 11 a.m., will include a welcome address from Diector Owens, remarks from DT&CC Head Librarian John Painter and DT&CC Board of Trustees Chairman William A. Carter, the keynote address by Gov. du Pont and ribbon cutting ceremonies.

All Delaware legislators have been invited as is the general public. Following the dedication ceremony, guests may tour Sussex County's first comprehensive library facility, Owens said.

The \$4 million library, funded by the state of Delaware, opened its doors on June 21, providing Southern Delawareans convenient access to academic and

technical materials, study and work areas and resource provisions not previously available locally.

The two-story complex currently has approximately 100,000 items available and will ultimately house 200,000 volumes of information, including academic and technical materials, government publications, fiction books and periodicals.

In addition, work, study and conference areas are also available to meet the needs of growing community.

Library hours are from 8:30 a.m. - 10:30 p.m. Monday thru Thursday, 8:30 a.m. - 4:40 p.m. on Friday and 9 a.m. - 1 p.m. on Saturday. For further information on materials, resources and services available at the new library call 856-9033 during the above hours.

### Co-op to credit bills

Beginning with electric usage in September, the bills of the 31,000 customers of the Delaware Electric Cooperative will be reduced through December 1982. The reduction comes in the wake of a Co-op overcollection (during the first half of '82) and the setting of a new purchased cost adjustment for the Cooperative.

The Public Service Commission approved a revised purchased cost adjustment for the Co-op, which is designed to limit the size of customer overcollections thru the end of the year. The new PCA is also designed to credit customers' bills with the 517-thousand dollars the Co-op has already overcollected this year. That overcollection was largely due to DP&L's reduction in the price of electricity sold to the Co-op.

For the customer using 750 KWH per month, the new PCA means a reduction of approximately \$4.87 per month.

## Lake Forest announces policy for free/reduced price meals

Lake Forest School District recently announced its policy for free and reduced price meals for children served under the National School Lunch and School Breakfast Programs. Local School officials have adopted the following family size income criteria for determining eligibility:

FAMILY SIZE	FREE MEALS YEARLY INCOME	REDUCED PRICE MEALS YEARLY INCOME
1	0 - \$6,080	\$ 6,081 - 8,660
2	0 - 8,090	8,091 - 1,510
3	0 - 10,090	10,091 - 14,360
4	0 - 12,090	12,091 - 17,210
5	0 - 14,090	14,091 - 20,050
6	0 - 16,090	16,091 - 22,900
7	0 - 18,100	18,091 - 22,900
8	0 - 20,100	18,101 - 25,750
		20,101 - 28,600

For each additional family member add: 2,000 2,850

Children from families whose income is at or below the levels shown are eligible for free or reduced price meals.

Application forms are being sent to all homes in a letter to parents. They are asked to complete them as soon as possible. Additional copies are available at the principal's office in each school. The information provided on the application is confidential and will be used only for the purpose of determining eligibility. Applications may be submitted at any time during the year. A statement of income and family size is required, plus a signed certification by the parents or guardian that the information provided is correct.

An application which does not contain complete information on household members and income cannot be used by the school. Missing information may result in denial of benefits to children. School officials urge parents to call the school if they need help in completing the form.

For an application to be complete, the total household income, the names of all household members, social security numbers of all household members 21 years or older and the signature of an adult household member must be provided. (Adults without social security numbers must state that they do not have one.)

The information on the application may be checked by the school or other officials at any time during the school years.

Recent changes in Federal regulations require that the school be notified by families of children receiving meal

benefits if household income increases by more than \$50 per month (\$600 per year) or when household size decreases.

In certain cases foster children who are eligible for these benefits. If a family has foster children living with them and wishes to apply for such meals for them, it should contact the school.

Under the provisions of the policy a designated school official will review applications and determine eligibility. If a parent is dissatisfied with the ruling of the official, he may wish to discuss the decision with the determining official on an informal basis.

If he wishes to make a formal appeal, he may make a request either orally or in writing to Melvin C. Luff, Deputy Superintendent, Dorman St., Harrington, DE 19952, phone number is 398-3244, for a hearing to appeal the decision. The policy contains an outline of the hearing procedure.

If a family member becomes unemployed or if family size changes, the family should contact the school to file a new application. Such changes may make the children of the family eligible for free or reduced price meals if the family income falls at or below the levels shown above.

Children who get meal benefits are treated the same way as children who pay for meals. In the operation of the child feeding programs, no child will be discriminated against because of race, sex, color, national origin, age or handicap.

Each school and the office of the Lake Forest School District has a copy of the complete policy, which may be reviewed by any interested party.



Annie Oakley could split with a bullet a playing card held edge on at thirty paces.

### 4th Levy Court District Democratic Primary

#### Wilson M. Reed

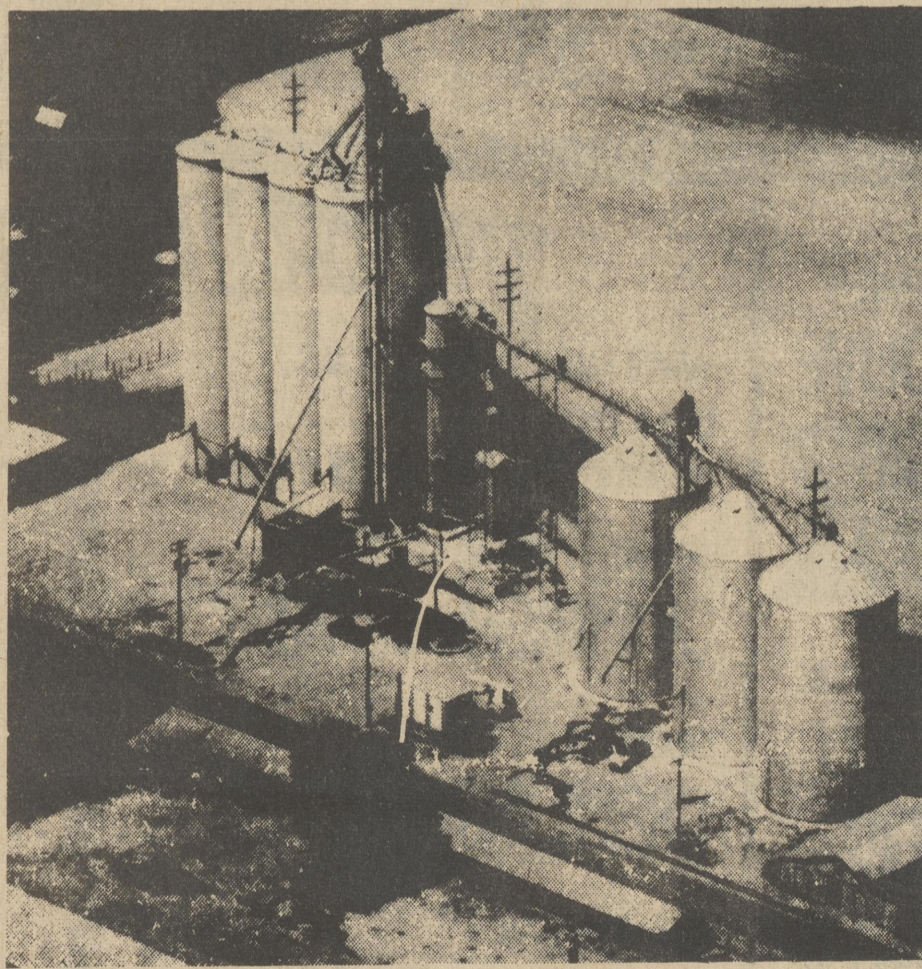
The decision of Kent County Levy Court Commissioner "Skip" Pikus not to seek a second term spurred Wilson Reed's decision to make a try for the Democratic nomination in the 4th District. But Wilson has had a continuing interest in county government and if not this year, would have decided in some future year to make the attempt.

A long-time volunteer in various capacities, Reed says he is "genuinely interested in people" and in "serving all the people." He feels he has the time and ability to make a positive contribution.

Continued on Page 8

# CENTRAL GRAIN, INC.

RAY BRITTINGHAM, Elevator Supt.



Bring Your  
CORN To Us  
Top Prices Paid

Central Grain Co., Inc.  
Harrington, DE

398-3296



### MARION TRACY DANCE STUDIOS

(Home of the Delaware Regional Ballet Co.)  
•Dover: 1071 S. Governors Ave.  
•Milford: Millford Shopping Ctr.  
•Smyrna: South School

CLASSES BEGIN SEPT. 13  
Phone 674-1020 to register  
for all three studios  
STAFF

- \*TATJANIA AKINFIEVA-SMITH - BALLET
- \*TONY PARNELL - JAZZ & MODERN
- \*MARY LU BRUNER - PRE-SCHOOL & BEGINNERS
- \*BETH ANN SHERIDAN - TAP & INTERMEDIATE
- \*CINDY SMITH - BEGINNERS
- \*WENDY KNIGHT - BATON
- \*CHERYL WALLS - AEROBICS
- \*DAVID TRACY - BALLROOM & DISCO

New in Milford Studio: Baton Classes

AUDITIONS FOR NUTCRACKER  
SATURDAY, SEPTEMBER 18  
ALL DANCERS WELCOME



EXTRA SAVINGS WITH STORE CHECKS\*

 <p><b>HOUSE PAINT</b> • Built-in primer, quick drying OUR REGULAR PRICE.....16.99 OUR SALE PRICE.....11.99 *Dupont Store Check.....3.00 YOUR FINAL COST <b>8.99</b> GAL</p>	 <p><b>WALL PAINT</b> • Quick drying, choice of colors OUR REGULAR PRICE.....14.99 OUR SALE PRICE.....10.99 *Dupont Store Check.....2.50 YOUR FINAL COST <b>8.49</b> GAL</p>
-----------------------------------------------------------------------------------------------------------------------------------------------------------------------------------------------------------------------------------------------------------------------------------------	-----------------------------------------------------------------------------------------------------------------------------------------------------------------------------------------------------------------------------------------------------------------------------------------

 <p><b>CEILING PAINT</b> • No stir, no mess, white OUR REGULAR PRICE.....14.99 OUR SALE PRICE.....10.99 *Dupont Store Check.....2.50 YOUR FINAL COST <b>8.49</b> GAL</p>	 <p><b>INTERIOR ENAMEL</b> • Perfect for wood and trim OUR REGULAR PRICE.....18.99 OUR SALE PRICE.....12.99 *Dupont Store Check.....2.00 YOUR FINAL COST <b>10.99</b> GAL</p>
-------------------------------------------------------------------------------------------------------------------------------------------------------------------------------------------------------------------------------------------------------------------------------------	------------------------------------------------------------------------------------------------------------------------------------------------------------------------------------------------------------------------------------------------------------------------------------------

Prices effective thru Saturday, September 11  
Rt. 113 at Rt. 14, Milford, DE  
Rt. 20 off Rt. 13, Seaford, DE

**VALUABLE**

**MAXWELL HOUSE COFFEE**

16 OZ. CAN  
4 GRINDS **\$2.29**

EXPIRES SEPT 11, 1982  
WITH COUPON & \$10.00 PURCHASE

**COUPON**

**VALUABLE**

**GOLD MEDAL PLAIN FLOUR**


5 LB. BAG **79¢**

EXPIRES SEPT 11, 1982  
WITH COUPON & \$10.00 PURCHASE

**COUPON**

**Bob Evans Pork Sausage**

12 oz. Pkg. **\$2.09**



**VALUABLE**

**WALDORF TOILET TISSUE**

3 VARIETIES  
PKG. OF 4 ROLLS **89¢**

EXPIRES SEPT 11, 1982  
WITH COUPON & \$10.00 PURCHASE

**COUPON**

PESCHKE'S WHITE LABEL SLICED COOKED SALAMI, DUTCH LOAF, PICKLE LOAF OR OLIVE LOAF **\$1.19 LB.**

JENNIE O FRESH FROZEN TURKEY WINGS OR DRUMSTICKS. **49¢ LB.**

SWIFTS SELF BASTING GOLD CREST TURKEYS . . . . . **69¢ LB.**

PESCHKES WHITE LABEL SLICED TURKEY BOLOGNA OR TURKEY HOT DOGS. **89¢ LB.**

PESCHKES WHITE LABEL SLICED BOLOGNA . . . . . **\$1.09 LB.**

USDA INSPECTED FRESH ECON O' PAK FRYERS

**45¢ LB.**



USDA INSPECTED GRAIN FED WESTERN BEEF BONELESS CHUCK ROAST

SOLD AS ROAST ONLY **169¢ LB.**



**DELI SPECIALS**

AVAILABLE AT STORES WITH DELICATESSEN. "TENDER, TASTY MEAT & CHEESE CUSTOM CUT TO YOUR LIKING" (ALL ITEMS DELI SLICED)

ESSKAY LARGE MEAT BOLOGNA . . . . . **89¢** (1.78 LB. 1/2 LB.)

ESSKAY SMOKED SLICED SLAB BACON . . . . . **\$1.79** (LB.)

BILMAR SMOKED TURKEY HAM. . . . . **\$1.09** (\$2.18 LB. 1/2 LB.)

ARMOUR STAR AMERICAN CHEESE . . . . . **\$1.09** (\$2.18 LB. 1/2 LB.)

**DAIRY SPECIALS**

BLUE BONNET 16 OZ. BOWL FAMILY MARGARINE. . . **69¢**

LIGHT N LIVELY 12 OZ. PKG. COTTAGE CHEESE LARGE OR SMALL CURD . . . . . **65¢**

SEALTEST 12 OZ. PKG. COTTAGE CHEESE . . . . . **65¢**

BREYERS 32 OZ. PKG. PLAIN YOGURT . . . . . **89¢**

BORDENS 16 OZ. PKG. AMERICAN SINGLES. . . . . **\$2.09** (WHITE)

FISHERS 12 OZ. PKG. SANDWICH MATE . . . . . **\$1.19** (YELLOW)

FISHERS SHREDDED 8 OZ. PKG. PIZZA MATE. . . **89¢**

**frozen food Festival**

QUIK MAID 8 OZ. WHIPPED TOPPING. . . **2/\$1**

BIRDS EYE 12 OZ. CAN AWAKE . . . . . **59¢**

AUNT JEMIMAS 15 OZ. JUMBO PACK WAFFLES . . . **99¢**

SARA LEE 13 3/4 OZ. 3 VARIETIES CAKE . . . . . **\$1.49**

CHEF ENGLISH 7 1/2 OZ. MUFFIN PEPPERONI PIZZA. . . . . **99¢**

BIRDS EYE 10 OZ. TENDER TINY PEAS . . . . . **59¢**

**FRESH! FROM FARM TO YOU PRODUCE**

BANANAS . . . . . **\$1.00** (4 LB.)


PRUNE PLUMS . . . . . **49¢** (LB.)

BROCCOLI . . . . . **69¢** (BUNCH)

EASTERN CARROTS . . . . . **2/49¢** (1 LB. PKGS.)

RED RADISHES. . . . . **3/49¢** (6 OZ. PKGS.)

CELERY HEARTS. . . . . **49¢** (EACH)



**FANTASTIC SAVINGS IN ALL DEPTS.**

40% OFF 48 OZ. PALMOLIVE LIQUID **\$2.19**

PILLSBURY PLUS 20 OZ. CAKE MIX **79¢** (11 VARIETIES)

TASTERS CHOICE 8 OZ. COFFEE **\$4.59** (REGULAR)

FRANCO AMERICAN 14 3/4 OZ. CANS SPAGHETTI. . . . . **3/89¢**

HANOVER 37 OZ. CAN CUT GREEN BEANS. & POTATOES **79¢**

HANOVER 39 OZ. CAN GREEN BEANS. . . . . **79¢**

HAVOLIN QT. CAN SUPREME 10W30. . . . . **99¢**

HAVOLINE QT CAN SUPREME 10W40. . . . . **99¢**

6 OZ. FREE PURITAN OIL

38 OZ. BOTTLE **159**

CORONET TOWELS

ROLL **69¢**

CHEER LAUNDRY DETERGENT

GIANT SIZE 49 OZ. BOX **189**

JIF PEANUT BUTTER

CRUNCHY OR CREAMY 18 OZ. JAR **139**

## Local Interest

by Joanne Wyatt 398-3943

Mr. and Mrs. H. Arthur Hoffman are proud to announce the birth of their grandchild, Little Miss Nichole Leigh Hoffman. Mr. and Mrs. Richard Hoffman of Newark are the proud parents. Little Miss Hoffman made her arrival on Wednesday, August 25 and weighed in at a healthy 7 lbs. 10 oz. The Hoffmans are formerly of Harrington. Congratulations!

Happy Birthday Tommy Lord! Congratulations and Happy Anniversary goes out to Mr. and Mrs. Frances Winkler who recently celebrated their fortieth wedding anniversary.

Get well wishes go out to Mr. Bob Collins.

Mr. Ed Deusa has opened a new business here in town. We would like to welcome Ed's Shoe Repair to our community.

Happy Birthday Crystal Sullivan! Get well wishes go out to Mrs. Elizabeth Howe.

Sympathy is extended to the family of Ricky Goodnight.

Get well wishes go out to Mr. Bill Mervine, Sr.

Mark your calendar for Saturday, September 18, Harrington's Heritage Day. Mr. Jim Hayward will chair a car show from 12 to 5 p.m. at Taylor and Messick's. It will be open to all vehicles. There will be a \$4.00 entry fee. Trophies and dash plaques will be awarded.

The Harrington Tower (formerly referred to as the blockhouse) is officially leased to The Great Harrington Historical Society as of September 1. A cleanup campaign will be held at the tower on Saturday, September 11 beginning at 9 a.m. All volunteers bring your own equipment and prepare for a good day's work.

Donations are needed to put up a fence around the tower. Anyone having railroad memorabilia or related items to display, loan or donate to the Society should call 398-3635 or contact Nyle Callaway, Jr. (Soupy). We hope to have the tower open on Heritage Day from 12 to 5 p.m. We need two hosts or hostesses, one from 12 to 2:30 and one from 2:30 to 5 p.m., (hopefully with railroad experience. Bryan Hammond will be setting up his own train, at his own expense at the tower for display. Thank you Bryan! Family fun for everyone. Come on out and join your friends and neighbors on Heritage Day, hope to see you there!

Happy Birthday Jane Melvin! Mrs. Thelma Miller has returned home from the hospital. Continuing to wish her a speedy recovery.

Happy Birthday wishes go out to Kelly Maloney and Mrs. Lillian Pearson!

Mr. and Mrs. Chuck Peck and son, Charlie of Newark and Mr. Tom Peck were the Sunday guests of Mr. and Mrs. Charles Peck.

Mr. Elmer Wyatt has returned home from the hospital. Continuing to wish him a speedy recovery. Get well soon, Uncle Elmer, we love ya.

Happy Birthday wishes go out to Robert Collins and Maggie Taylor!

Brownie troop 332 enjoyed a barbecue at the home of Mr. and Mrs. John Winkler and Brandi on Wednesday, September 1. Those attending were Brownies, Brandi Winkler, Stacey Bennett, Tammy Motter, Chastity

Emory, Chelsey Wilson, Donna Faye Dennis, Dawn Shaffner, Kelly Barter, Christie Olsen and Nichole Wheatley, others attending were Mr. and Mrs. Richard Bennett, Shannan and Summer, Mrs. Frannie Dempsey and Mrs. Billie Motter. Mrs. Janice Winkler and Mrs. Debbie Bennett, Troop leaders enjoyed their year with the Brownies and would like to express their thanks to all the parents that helped throughout the year.

Mr. Wm. Winkler showed his cattle at the Maryland State Fair in Timonium. He won the Bull Calf Class Champion. Congratulations.

Miss Brandi Winkler and Miss Shelley Winkler spent the weekend at the Maryland State Fair.

Happy Birthday wishes go out to Donald Pearson and Fred Pearson! Get well wishes go out to Mrs. Elizabeth Anthony.

Happy Birthday wishes go out Michael Cole who will be celebrating his 15th birthday on Monday, September 13.

The Democrats held their regular meeting at the Fairgrounds Restaurant last Monday evening, with the former Governor Tribbett presiding.

Get well wishes go out to Webb Porter.

Happy Birthday wishes go out to Mabel Melvin!

Get well wishes go out to Mr. Edmund Greer who is a patient in the Pit County Memorial Hospital in Greenville, North Carolina. Mr. Greer was involved in an accident three weeks ago and burned over 35% of his body. He is the son of Mrs. Louise Greer of Reese Ave. Harrington. Wishing him a speedy recovery. May God Bless.

Mr. and Mrs. David Welch, Davie and Tina were the Sunday dinner guests of Mr. and Mrs. Carroll Welch, Sr.

Mrs. Mildred Welch will be making her cold water hand soap at Taylor and Messick at 1:00 o'clock and 4:00 o'clock on Heritage Day. Come on out and watch her demonstrate this lost art craft.

Happy Birthday wishes go out to Dennis Edgar!

Congratulations go out to Mr. and Mrs. Ricky Pence who were married on August 29 at Barratt's Chapel.

Mr. Carrol Wix, Mr. and Mrs. Robert Wix, Mr. and Mrs. Carroll Welch, Sr., Mr. and Mrs. Willard Cornish, Mr. and Mrs. Hudson, Mr. and Mrs. Frank Bradley, Mrs. Linda Collins and son, and Mr. and Mrs. Charles Coverdale all visited with Mr. and Mrs. Elmer Brown this week.

Get well wishes go out to Mr. Elmer Brown.

The Little League Ladies' Auxiliary will have a meeting on Thursday, September 9, at 7:30 p.m. at the Harrington Fire Company.

Enjoyed a phone call from Mr. Carrington Burgess this week. It means a lot when someone calls to say they enjoy the column. Thanks, Mr. Burgess, you made my day!

Happy Birthday, Amanda Tofts! Please drive carefully, watch for children crossing and school buses. Hope everyone had a happy summer!

Well wishes to all, Take care, Share a smile, God Bless.

Church in Bartow, Florida. He wishes to be remembered to all his friends.

Library news for September: The summer reading program has ended at the Greenwood Library with a total of 20 children participation. In connection with this program, a total of 186 books were read and reported on by the children. Eleven children read ten or more books which qualified them for a certificate and a "big cheese reader" pin. Jackie Gillespie won a prize for reading the most books and Derek Brewington received the candy prize for guessing the closest count to the actual number of pieces in the container.

The Library would like to thank all those who helped us mark our anniversary week. The guest presenters were all most interesting and afforded those who attended an opportunity for some fun but also a means of gaining information.

The Story Hour at the Library will be on September 14 at 10 a.m. This is an opportunity for your pre-schooler to enjoy stories and other activities as well as being with other children.

Movies for September will be "P.J. and the President's Son" on Sept. 20 at 4 p.m. and on the 25th the films shown will be "Shoemaker and the Fives" and "Wilbur's Story". The time on the 25th will be 10:30 a.m.

Here's a good thought. If you would like to honor or remember a friend or relative, you might donate a new book to the library. (A topic of interest to the person, or a novel would be suitable). Include the library's phone number: 349-5309. Many library directors speak of the books they receive in this way.

Mr. and Mrs. Samuel Meredith and family from Palo Alto, California are visiting various relatives in this area. They are spending some time with his mother and father, Mr. and Mrs. Nelson Meredith; on Saturday night they enjoyed dinner with their aunt, Mrs. Violet Bringhurst of Viola; and they are spending a week with Mr. and Mrs. Donald Lynch at their summer home in Fenwick Island.

Mrs. B.W. Conaway of Wilmington who lives with her daughter and son-in-law, Mr. and Mrs. Peter Filliigo have moved to Clayton, DE. She has been visiting Mary Uhler of Seaford and Mabel Farrow of Greenwood this past week. Mrs. Conaway was a resident of Greenwood at one time.

The Rev. and Mrs. Haig Medzarenty of Bartow, Florida, have been visiting Mary Uhler of Seaford. Rev. Medzarentz was pastor in Greenwood Churches 1968, 69 and 70. He, now is assistant pastor at the First United Methodist



A fresh beginning - First graders and kindergarteners lined up at Lake Forest South "B" Elementary on Tuesday as summer disappeared and school began for the 1982-83 year.

## Houston

By Margaret Thistlewood 422-4944

Mr. and Mrs. Byron Phillips spent a week visiting in Pennsylvania. They attended the Phillip family reunion held in Kingston, PA and also visited Mr. Seba Grunstra of West Pittston, PA and Rev. and Mrs. Maynard Grunstra. Mr. Grunstra a former Houston resident is now 93 and in good health.

Mrs. Linda Brown and children Angela and John spent several days visiting her father Norman Taylor of Menhawkin, New Jersey. Mr. Brown was attending guard camp in Virginia. Mr. and Mrs. Armour Purcell and Postmaster and Mrs. Richard A. Yost spent a weekend in Fenwick recently.

Dinner guests of Mrs. Edna Sapp on Sunday were Mrs. Nancy Backman of Bridgeville, Mr. and Mrs. Francis Simpson, Pauline Morgan and Anna English.

Mrs. Helen Prettyman was a dinner guest of Mr. and Mrs. Albert Simpson of Harrington on Sunday.

Kenneth and Betsey Swinson and children of Miller Place, New York spent Monday with Denise and Thomas Surdukowski and children. Billy and

David Swinson spent the week with them and enjoyed going fishing and to the beach. The Surdukowskis took them home and spent the weekend in New York.

John and Carol Sieber and children spent the weekend visiting Mr. and Mrs. Earl Sieber of Ligoneer, PA.

Mr. and Mrs. Eugene Sharp spent Wednesday in Wilmington.

Mr. and Mrs. Jig Coverdale and daughter Kara attended the Coverdale family reunion held near Milford on Sunday.

Cindy Eisenbrey, daughter of Connie and Wayne Eisenbrey will celebrate her first birthday on Saturday, Sept. 4th.

Join the Girl Scout Brownies ages 6 to 8 in the Houston area. If interested, call 422-5969 or 422-5845.

Jack and Joan Eisenbrey spent the weekend at Valley Forge, PA.

Mrs. Stella Wright of Choptank, MD visited her sister, Mrs. Myra Jump recently.

Cherie Lynn Morgan celebrated her 15th birthday on Wednesday, Sept. 1st.

Elmer Wyatt is now recuperating at home after being a patient in the Milford Memorial Hospital for several weeks.

## Research beginning on Delaware women

The Chesapeake Bay Girl Scout Council, the Delaware Presswomen, the National League of American Penwomen and other writers' and women's groups throughout Delaware are asking the public to submit names of women to be researched for a new book about significant Delaware women. The book *Delaware Women Remembered*, published during the Bicentennial is now out of print but the demand for information and recognition of Delaware's women continues.

The purposes of the new book are to identify significant women in Delaware's past and present not already chronicled in *Delaware Women Remembered*, to interview the contemporary women and research the lives and work of the women of the past and, to update the information on contem-

porary women in *Delaware Women Remembered*.

The public is invited to suggest women from their community, organizations, the sciences, the professions, the arts, business, etc. who can be considered for further research by the committee and possible inclusion in the new volume. Information not included in the book will be filed with the Historical Society of Delaware for research on future projects.

The research and documentation for this project is funded in part by a grant from the Delaware Humanities Forum.

The public is asked to submit names of suggested women on a specially prepared form before September 24, 1982. Forms are available from the Chesapeake Bay Girl Scout Council, 1503 W. 13th St., Wilmington, DE 19806, 302-658-4258.

## Hurricanes late summer fury

Hurricanes -- enormous storms that can lash coastal areas with fierce winds, heavy seas and torrential rains -- are most frequent this time of year.

The central Atlantic Coast has been hard hit several times by these tropical storms that can range from 200-300 miles in diameter, and there is little scientists can do to lessen their fury.

Dr. Laurence S. Kalkstein, associate professor of geography and the Center for Climatic Research at the University of Delaware, explained that hurricanes may begin as far away as the Atlantic waters off the coast of Africa.

"Hurricanes begin over a warm body of water with warm air above. The warm air rises and cools and forms the clouds that will make up the hurricane," he explained.

"Hurricanes form when there is instability in the atmosphere. There is rapidly moving, upward spiraling air. The clouds forming over water pick up an enormous amount of moisture. In its early stages, a band of thunderstorms or squalls -- called an easterly wave -- forms and begins to move and gather strength."

Dr. Kalkstein noted that the weather patterns over the Atlantic move from east to west, drawing the hurricane toward land -- usually around the Gulf of Mexico and along the southeastern coast of the U.S.

As the easterly wave becomes more intense it is called a tropical storm. Only when winds reach 74 miles per hour is it classified a hurricane.

While most people think of a hurricane as one enormous storm, Dr. Kalkstein noted that it is, in fact, a number of squalls, varying in intensity, moving around the calm center -- or eye -- of the storm.

Satellite and aircraft tracking of a storm can help predict where and when a hurricane will hit, he said, but the storms can suddenly change course. Scientists don't know why.

If it does look like a hurricane may be

hearing for a certain coastal area, a "hurricane watch" is posted. That means an area is threatened, "but it does not mean it's time to evacuate," Dr. Kalkstein said.

The next stage of preparation is the "hurricane warning." This means the storm is likely to hit the area. "This is the time to batten down the hatches," Dr. Kalkstein added.

When the hurricane hits land it loses its source of water (the ocean or Gulf of Mexico) and soon diminishes in strength. What often causes the most damage in coastal areas, Dr. Kalkstein explained, is the tremendous tidal surge caused by the storm.

Even after the winds drop below hurricane strength, Dr. Kalkstein added, a fierce storm, bringing heavy rains and wind may linger on.

Some hurricanes have lasted as long as three weeks, and traveled 3,000-4,000 miles. The same storms in the Pacific are called typhoons.

Because hurricanes form and grow over water where there are few weather stations, it is difficult to predict a storm's strength accurately. It is even more difficult to do anything to stop the storm.

There has been a government research project called "Project Storm Fury," that is involved in "cloud seeding" hurricanes. "Cloud seeding" is the process of putting tiny particles into clouds, causing droplets to form and fall to earth as rain. The idea in "cloud seeding" a hurricane would be to have the storm "rain itself out" before it hit land.

"This is a very controversial subject," Dr. Kalkstein explained. "While hurricanes can cause great damage, they often also bring much needed rain to dry areas at the end of the summer."

He added that such research is in its infancy, and we should not plan on never having a hurricane hit our shores again.

## Carper establishes headquarters

Thomas R. Carper, 35, Delaware's Democratic candidate for U.S. Congress, last week announced the establishment of his central "Carper for Congress" campaign headquarters in the renovated New Castle Armory, 621 Delaware St., in historic New Castle, DE.

and Kent and Sussex Counties, he said. Heading Carper's campaign staff of 12 full-time members is Ed Freel, who has managed two previous statewide campaigns. Other staff members are Carol Ellis, deputy campaign manager, Sharon Fitzgerald, press secretary, and Leone Ciporin, volunteer coordinator.

## Gab Fest

by Pat Hatfield 349-4255

Meals are so easy in August. There is always golden sweet corn and tender limas, and we eat tomatoes twice a day. I shall mist them most of all when summer passes. A favorite dinner meal is bacon and fried tomatoes with milk gravy and hot biscuits. And when we have them sliced, they make the platter both tasty and a delight to the eye. Of course we have salads, crisp and cold, with the lettuce, onions and so on and I like them, but when it comes right down to it, I wouldn't tell my name for an ice cold tomato. I like them best when I run out to the garden just before dinner and select a few, skin and slice them, deep red and warm from the afternoon sun. I enjoy a wee bit of lumpy blue cheese dressing on them. Dad dresses his only with salt, pepper and sugar. All the Hatfields eat sugar on their tomatoes, both cooked and raw. A big slice goes into the luncheon sandwiches, along with tuna, ham, cheese or whatever.

Looking out the kitchen window this morning, Dad called, "Come see the sparrow with the white tail." I disagreed about it being a sparrow. The bird was almost as large as a robin and with that kind of tail. It was kind of a dark brown or gray and the tail feathers were pure white. Was it an albino, or a mutation from the norm or a mockingbird with white tail feathers rather than the white-edged wings? I do hope it stays around so we can observe more closely.

The mockingbirds are singing again this morning, after a few weeks of just chipping. We should hear them now until about frost. This will be their Swan Song before the winter.

With all this canning and freezing, I am sharply aware of the fact that I have not yet gotten into apple sauce. I can never get enough made because we prefer the homemade to the store kind.

Dad has just brought in lovely roses, both pink and red. This, too, reminds us that the season is drawing to a close. It was the ancient poet, Herrick, wasn't it, who said: "Gather ye rosebuds while ye may; Old time is still a-flying: And this same flower that smiles today, Tomorrow may be dying."

Speaking of apples, a paragraph in the 1888 almanac caught my eye. "Baked apples have an excellent effect upon the whole physical system, feeding the brain as well as adding to the flesh, and keeping the blood pure; Also preventing constipation and correction a tendency to acidity, which produces rheumatism and neuralgia."

I've just had my morning Gab Fest with my friend, Tess, and we spoke of the many with whom we talk who are predicting a gloomy and long, card, hard winter. This may come to pass, it is true, but the weather lies in the hand of the Creator and no one can predict what He has in mind for us or why. But this, we cling to....This same God who has brought us thru some 70 winters in our lives is going to take care of us in the coming one, so we relax and trust.

## Greenwood

by Pat Hatfield 349-4255

Greenwood United Methodist Church held their Rally Day exercises on last Sunday and promotions were made among the Sunday School classes, pins were distributed, Bibles, certificates of appreciation and so on were presented.

The Charge reports a busy and happy summer with beach parties, swimming parties, skating parties and many good discussions among the Youth Group that meets at 5:30 on Sunday afternoons.

Plans are being made to attend some of the fine concerts at Faith City Tabernacle. Nationally known groups will be there and we plan a caravan.

Mr. and Mrs. Samuel Meredith and family from Palo Alto, California are visiting various relatives in this area. They are spending some time with his mother and father, Mr. and Mrs. Nelson Meredith; on Saturday night they enjoyed dinner with their aunt, Mrs. Violet Bringhurst of Viola; and they are spending a week with Mr. and Mrs. Donald Lynch at their summer home in Fenwick Island.

Mrs. B.W. Conaway of Wilmington who lives with her daughter and son-in-law, Mr. and Mrs. Peter Filliigo have moved to Clayton, DE. She has been visiting Mary Uhler of Seaford and Mabel Farrow of Greenwood this past week. Mrs. Conaway was a resident of Greenwood at one time.

The Rev. and Mrs. Haig Medzarenty of Bartow, Florida, have been visiting Mary Uhler of Seaford. Rev. Medzarentz was pastor in Greenwood Churches 1968, 69 and 70. He, now is assistant pastor at the First United Methodist

Church in Bartow, Florida. He wishes to be remembered to all his friends.

Library news for September: The summer reading program has ended at the Greenwood Library with a total of 20 children participation. In connection with this program, a total of 186 books were read and reported on by the children. Eleven children read ten or more books which qualified them for a certificate and a "big cheese reader" pin. Jackie Gillespie won a prize for reading the most books and Derek Brewington received the candy prize for guessing the closest count to the actual number of pieces in the container.

The Library would like to thank all those who helped us mark our anniversary week. The guest presenters were all most interesting and afforded those who attended an opportunity for some fun but also a means of gaining information.

The Story Hour at the Library will be on September 14 at 10 a.m. This is an opportunity for your pre-schooler to enjoy stories and other activities as well as being with other children.

Movies for September will be "P.J. and the President's Son" on Sept. 20 at 4 p.m. and on the 25th the films shown will be "Shoemaker and the Fives" and "Wilbur's Story". The time on the 25th will be 10:30 a.m.

Here's a good thought. If you would like to honor or remember a friend or relative, you might donate a new book to the library. (A topic of interest to the person, or a novel would be suitable). Include the library's phone number: 349-5309. Many library directors speak of the books they receive in this way.

### Anne's Kitchen

**STUFFED PEPPERS**

- 1 cup rice
- 1 lb. ground beef
- 1/4 cup grated Romano cheese
- 2 tablespoons chopped italian parsley
- 2 eggs, beaten
- Salt and pepper to taste
- 7 or 8 green bell peppers
- 1 - 8 oz. can tomato sauce
- 8 oz. water

1. Cut tops off peppers and scoop out seeds. Set aside.
2. Cook rice according to package instructions and let cool.
3. Add all other ingredients *except tomato sauce and water* to rice and mix well.
4. Fill peppers, place in a large dutch oven.
5. Dilute tomato sauce with water, season with salt and pepper and pour over stuffed peppers.
6. Place over medium heat and cook till peppers are desired tenderness. During this time baste peppers frequently with tomato sauce from bottom of pan.

If you like you may serve at once. Also good if placed at the back of the stove, allowed to rest and served a few hours later heated up. You will find this a wonderful cook-ahead-meal for a busy day. This recipe is really a meal in itself but a nice salad goes along very nicely.

If you have peppers from your garden, and you are getting a little tired of them you may want to try freezing them for just this purpose. Just follow the directions above to prepare the peppers. Put them in a plastic bag, secure with a twist tie and proceed with the rest of the recipe when you feel like it.

Enjoy!

### "WHY DIDN'T I BECOME A HAIR STYLIST?"

If you have asked yourself this question, don't wait and regret never having done something about it.

Now is the time to take that all important first step to enter the exciting world of beauty.

At Kelly's Beauty School you learn by doing, where every step of your training is thoroughly shown.

Convenient day or evening classes - and we help you finance your education.

Call 734-9200 now or fill in the coupon below:

## Kelly's

Beauty School

1487 S. Gov. Ave. 734-9200

(COUPON)

Name \_\_\_\_\_

Phone No. \_\_\_\_\_

Address \_\_\_\_\_

Day or  
 Evening classes

### Health Tip

OF THE WEEK

**PAINT REMOVER**

A couple of hours work with paint and varnish remover in a basement workshop can cause carbon monoxide poisoning severe enough to overload a faulty heart. Removers are safe if used where lots of fresh air is available - such as in a garage with the doors fully open.

Health is precious... let us help protect yours

**Carl June HARRINGTON PHARMACY**

HARRINGTON 398-8123

**Hospital Supplies and Equipment**

## Apologies

**CORRECTION AND APOLOGIES** - It was Danny Lou Harvey, Senior Regent of the Women of the Moose Lodge #534 who appeared in the picture with Tanya Kemp, Delaware National Pre-teen in last week's *Harrington Journal*. Mrs. Harvey presented Tanya a check for \$50 which will support her in the program book at the national Pre-teen pageant in November. We incorrectly identified Mrs. Harvey in the picture. Our apologies to Mrs. Harvey and the Women of the Moose for the error.

Harrington Baptist Church

Rev. Robinson's sermon on Sunday, Sept. 5, was entitled 'Putting Work In Its Place.' Matt Burgess provided the special music.

On Saturday, Sept. 11 at 9 a.m. there will be a fall housecleaning day at Asbury. Bring a bag lunch and join in the work and fellowship of our church.

The Rev. Howard Walsman, Confer-

ence Director of the Reach program will be our guest speaker at the 11 a.m. worship service Sept. 12.

Choir rehearsals have begun. However, the Cherub Choir will have their first meeting on Sept. 9 at 6:30 p.m.

Verse for thought: 'Create in me a clean heart, O God and renew a right spirit within me.' (Psalm 51:10)

Asbury U M Church

London Village Mission will have Revival Services Sept. 12-17th with Rev. Ernest Reisinger.

Week of prayer for state missions, starting Sept. 12th. The special offering goal for our church is \$300.

Pray for the Heritage Day booth as others minister thru this effort. This is a first for the church and Heritage Day. The 'fields are white unto harvest.'

Join us Sunday at the Morning Worship Service and hear Vince Treadway in testimony in song.

Each Tuesday night at 7:30 p.m. the Migrant Ministry continues thru Oct.

Meet at the church at 7 p.m. if you need a ride to Bridgeville.

Minister Gives \$28,700 to Wesley College

The Rev. Dr. Howard Boniwell Warren of Hebron, MD has recently made a gift of \$28,700 to Wesley College to establish the Dr. Howard B. Warren Endowed Scholarship.

Dr. Warren, who was born in Selbyville, DE, ninety one years ago, graduated from the Wilmington Conference Academy (now Wesley College) as president of his class in 1910.

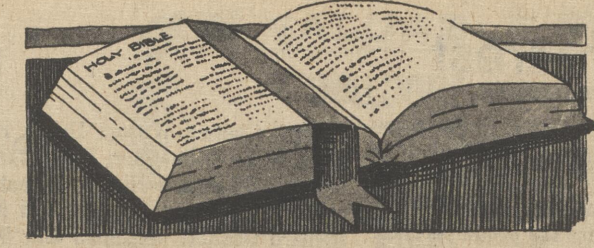
His distinguished career has included service as a navigation officer in the U.S. Shipping Board, in World War I, a high school science teacher, a teacher of philosophy at Hofstra University and pastor of Methodist churches in Maryland, Connecticut, New Hampshire, New York and Delaware.

A variety of religious and community groups.

Dr. Warren has made generous gifts to many church related colleges including: Boston University School of Theology, Wesley Theological Seminary, Drew University, Wesleyan University, and Methodist related causes such as Barratt's Chapel, Frederica, DE; the Strawbridge Shrine Assoc. of the Baltimore Conference of the United Methodist Church and the St. Matthews-by-the-sea congregation at Fenwick Island, DE.

Dr. Warren and his wife, the former Dorothy Moody, now reside in Hebron, MD.

Dr. Warren's philosophy can be stated rather succinctly in this quote: 'God has generously blessed me and, in my sunset years, I have many pleasant memories of friends scattered far and wide. My aim has always been John Wesley's motto--'Earn all you can, save all you can and give all you can.'



Catholics plan annual Orphans Collection

Members of Catholic parishes in the Wilmington Diocese will be asked to contribute to the annual Orphans Collection on the weekend of September 11 and 12.

A new facility for Seton Villa is currently being constructed and will replace the existing building which because of age had presented major problems in its continued use for institutional purposes.

The home serves children who are the emotional orphans of family disintegration, family stress, child neglect and child abuse.

Obituaries

PAUL E. MITCHELL SR.

Paul Edward Mitchell, 65, of Burrsville, MD, near Denton, died of heart and kidney ailments Wednesday, Sept. 1, 1982 in Milford Memorial Hospital, Milford, after an illness of many years.

Mr. Mitchell retired in 1967 after 25 years as a machinist for the Pennsylvania Railroad. He moved to Burrsville five years ago from Chester, PA.

He was a member of the Church of the Nazarene, in past years at its churches in Wilmington and Chester, and more recently in Denton.

He is survived by his wife, Helen May Mitchell; two sons, Paul E. Jr. of Coatesville and August W. of Coatesville, PA.; a daughter, Esther Merker of Coatesville; two brothers, Omar of Parkside, PA., and John of Chester and five grandchildren.

Services were Saturday morning at 11 in the Moore Funeral Home, Denton, where friends called an hour earlier. Burial was in the Denton Cemetery. Instead of flowers, the family suggests contributions to the Missionary Fund care of Church of the Nazarene, Denton, MD 21629.

STEVEN SCOTT RINGER

Steven Scott Ringer of Great Bend, Kansas, died Monday, August 31, 1982 of a heart condition in the Kansas University Medical Center, Kansas City, Kansas. He was two years old.

He is survived by his parents Vane F. and Nancy Kay Ringer, of Great Bend, his maternal grandparents, Mr. and Mrs. Gary K. Smith, of Minneapolis, Kansas; his paternal grandparents, Mr. and Mrs. Nathan Ringer, Jr. of Salina, Kansas; three great grandmothers; Mrs. N.S. Ringer, of Salina; Mrs. Elsie Pitlick, of Harrington, Del., and Mrs. Marjorie Smith, of Glasco, Kansas; and one great great grandmother, Mrs. Mae Felton, of Salina.

Graveside services were at 10 a.m. on Friday at the Roselawn Cemetery in Salina, Kansas. Funeral arrangements were made by the Ryan Mortuary, Salina.

Services were Saturday afternoon at 3 in the Boulais Funeral Home, Greensboro, where friends called an hour earlier. Burial was in Greensboro Cemetery.

SADIE CAUSEY

SALISBURY, MD - Said Causey of Wyoming died Monday, Aug. 30, 1982 at Peninsula General Hospital in Salisbury, after a long illness. She was 52.

She is survived by four brothers, William Causey of Milford, Roosevelt Causey of Harrington and Melvin Causey of Houston; and Robert Causey of New York City, N.Y.; three sisters, Effie Pritchett of Salisbury, Emma Causey of New York City, N.Y. and Sarah Causey of Greenwood.

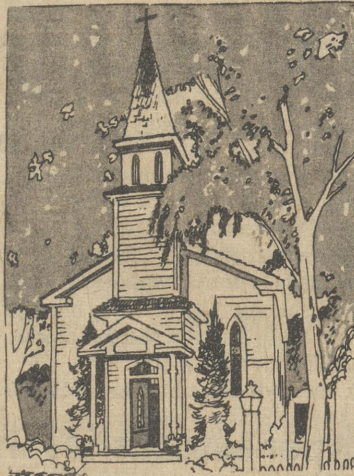
Funeral services were at noon, Friday at the Minus Funeral Home, Dover. Friends called one hour prior to service time. Burial was in Star Hill Cemetery.

Calvary Wesleyan Church News

CYC registration will be held this Wednesday from 7 til 8 p.m. Children from ages 4 and 5 thru grade 6 are invited to participate in this Bible Club oriented program.

Special services for Sunday, Sept. 12, include a Hymn Sing on Sunday evening at 7. The theme is 'Love Reaching' and is being prepared by Mrs. Kathy Wetherhold.

Happy Birthday greetings this week to: Jane Melvin, Sept. 8, Kelley Malone, and Lillian Pearson, Sept. 9; Donald Pearson, Fred Pearson, Mable Melvin and Dennis Edgar on Sept. 11.



Harrington Minister a student at Wesley Seminary

WASHINGTON, D.C. - Carol E. Beyer of Harrington, DE has become a Master of Divinity student at Wesley Theological Seminary, Washington, D.C.

Mrs. Beyer is the wife of David A. Beyer and the mother of four children. She is a graduate of Wilmington College, Wilmington, DE where she received the Dean's Commendation for Academic Achievement. She was on the Dean's list each year and in 1982 made the National's Dean's List. She was graduated Cum Laude in 1982.

Mrs. Beyer is affiliated with the Peninsula Annual Conference of the Methodist Church, serving as a student

pastor for four churches in the West Harrington Charge: Trinity, Prospect, Salem and Bethel.

Wesley Theological Seminary has a current enrollment of 360, 125 of whom are women. Students come from 29 states and 3 foreign countries. They represent 33 Annual Conferences of The United Methodist Church and 23 other denominations. Wesley offers four degree programs: Master of Divinity, Master of Religious Education, Doctor of Ministry and Master of Theological Studies. More than 1800 graduates serve the church. While there are some on special appointments in teaching, missionary and administrative posts, the majority serve as parish ministers.



L & W AGENCY Insurance advertisement with contact information for Dover and Georgetown offices.

McKnatt Funeral Home advertisement located at 50 Commerce St. in Harrington, DE.

Area Church News - Courtesy of the following sponsors:

Table listing various local businesses and services such as furniture stores, real estate, banks, and insurance agencies.

Advertisement for a house for sale, mentioning 'FOR SALE' and 'no capital gains tax'.

Church Directory listing various churches and their service times, including Asbury United Methodist, Nazarene, and others.



Harrington Softball League action at the Moose field on Labor Day

**2nd annual "Roll A Cross" slated**

We've got the skates so why not roll with us on Sept. 11 in Rehoboth. The Delaware Chapter of the American Red Cross is holding the 2nd annual Rehoboth "Roll A Cross", outdoor roller skating marathon beginning at Canal Street and Columbia Avenue. All proceeds from the marathon benefit disaster services. Register early so you can find sponsors to pledge you and be eligible to win one of the many great prizes. Advanced registration is \$6 and includes a marathon t-shirt, refreshments, entertainment by a mobile disc jockey and skates. Registration day of the event is \$8. That's Sat., Sept. 11 from 10 a.m. - 1 p.m. Raindate is Sun., Sept. 12 same time. Call your local Red Cross for an entry form or stop by the Rusty Rudder or Country Squire, our major sponsors who also have forms on hand.

**Hunters Safety Courses are now being offered**

**SEPTEMBER 8 & 9; SEPTEMBER 22 & 23; SEPTEMBER 29 & 30** - Christ Episcopal Church, Baker Parish Hall N.W. 2nd Street and Church Avenue, Milford.  
**SEPTEMBER 20, 22, 24** - Lewes Junior High School, Savannah Road, Lewes, \*NOTE: 6:30 - 9:30 p.m.  
**SEPTEMBER 13 & 14** - University of Delaware Agricultural Substation, Georgetown.  
**OCTOBER 4 & 6; OCTOBER 18 & 20; OCTOBER 25 & 27** - Delaware Technical & Community College Southern Campus, Georgetown.  
 All persons under the age of 18 must satisfactorily complete a hunter safety course before obtaining a Delaware Hunting License.

All classes 7 - 10 p.m. each night except where otherwise noted. For further information, contact, Hunter Education Program, Division of Fish and Wildlife, P.O. Box 1401 Dover, Delaware, 19901, 736-4431.

**Fame selected as August's Harness Horse of the Month**

COLUMBUS, Ohio - In a month filled with world record speed performances, the 2-year old pacer, Fame, was selected as August's harness horse of the month by the U.S. Trotting Assoc. Although Fame started August out by finishing tenth in the richest race of the year, the \$1.96 million Woodrow Wilson Pace, he came back to win the \$510,400 Peter Haughton Memorial in 1:59 2/5 and the \$167,492 Fox Stake in straight heats timed in 1:57 1/5 and 1:55 3/5.  
 Owned by the Fame Plus 11 Enterprises, Great Neck, N.Y., Fame is driven by William O'Donnell and is trained by Jerry Silverman.  
 Three Diamonds, last month's selection, continued to show her exceptional speed in August. She set a world record of 1:56 1/5 for 3-year-old fillies over a half-mile track for the mile

distance and tied a world record of 1:55 3/5 over a five-eighths mile track.  
 Other consistent performers in August were Cam Fella and Jazz Cosmos, both three-year-olds. Cam Fella, a pacer, won the prestigious Prix d'Ete and Confederation Cup. Jazz Cosmos, a trotter, won a heat of The Hambletonian, but finished 2nd to Speed Bowl in the final. He also won a division of the Zweig Memorial and took the Horseman Futurity at Indianapolis in straight heats.  
 And Niatross's world race mark of 1:52 1/5 -- the fastest race mile in harness history -- fell twice in August. Genghis Khan, a 6-year-old pacer, lowered the mark to 1:51 4/5 and a week later, a 3-year-old pacer, Trenton lowered the mark another one-fifth of a second to 1:51 3/5.

**Major Harness Races During September**

- Sept 3, World Trotting Derby, (3 yo Filly Trot), \$100,000E purse, DuQuoin, Ill.
- Sept. 4 Challenge Cup (Inv. Trot 1 1/2 mi.), \$100,000E purse, Roosevelt Raceway.
- Sept. 4, U. S. Pacing Championship (Open Pace), \$60,000E, Sportsman's Park.
- Sept. 4, World Trotting Derby (3yo Open Trot), \$500,000 DuQuoin, Ill.
- Sept. 6, Dancer Memorial (3yo Colt Pace), \$100,000G purse, Freehold Raceway.
- Sept. 11, Kentucky Pacing Derby (2yo Open Pace), \$250,000E, Louisville Downs.
- Sept. 14, American-National (3yo Filly Trot), \$70,000E purse, Sportsman's Park.
- Sept. 14, The Simcoe (3 yo Colt Pace), \$100,000E, purse, Mohawk Raceway.
- Sept. 18, American-National (2 yo Colt Pace), \$100,000E, purse, Sportsman's Park.
- Sept. 18, the Colonial (3 yo Open Trot), \$100,000E, Liberty Bell Park.
- Sept. 22, The Jugette (3 yo Filly Pace), \$90,000E purse, Delaware, Ohio
- Sept. 23, Little Brown Jug (3 yo Open Pace), \$250,000E purse, Delaware, Ohio
- Sept. 25, John Chapman Memorial (2 yof Pace Final), \$250,000E purse, Roosevelt Raceway
- Sept. 25, The Garden State (2 yo Colt Pace), \$100,000G purse, Freehold Raceway.

**Harrington Fall Softball League**

Results of last week		Northern Division	
Slater 8, Vepco 3		Cardot .....	2 0
Oak Crest Cement 8, Gallo 4		Jordon's Phcy. ....	1 1
Farmington Fire 4, High Point 3		Oak Crest Concrete .....	1 1
Schrimer Const. 10, Camden Merch 3		Cam. Merchants .....	0 2
Cardot 8, Jordon's Pharmacy 2		High Point .....	0 2
Frederica Merchants 4, ACT 1		Southern Division	
Harrington Merch. 12, Tay. & Mes. 10		Frederica Merch. ....	1 1
Jordon's Pharmacy 10, Felton Merch 4		Harrington Merch. ....	1 1
Gallo 8, High Point 2		Taylor & Messick .....	1 1
Cardot 8, Oak Crest 0		Felton Merchants .....	0 2
Farmington Fire 4, Camden Mer. 3		Vepco .....	0 2
Tay. & Mes. 10, Felton Merch. 1		Eastern Division	
ACT 4, Harrington Merch. 1		Farmington Fire .....	2 0
Slater 9, Frederica Merch. 8		Schrimer Const. ....	2 0
Schrimer 11, Vepco 3		Slater Trucking .....	2 0
		ACT .....	1 1
		Gallo .....	1 1

**Skipjack Races**

The 23rd Annual Oyster Fleet Skipjack Race was held Monday, Labor Day - the traditional day for this event, in Deal Island, MD. The first organized workboat races started in 1921 and ended 1931. The races were then called The Annual Chesapeake Bay Championship Workboat Regatta Races. The classes were Schooners, Pungies, Bugeyes, Skipjacks (with decking) and Skipjacks (without decking). At that time the races then were sponsored by the Baltimore Sun Papers. In 1960, the Deal Island-Chance Lions Club and

*(Continued on page 8)*

HARRINGTON PUTS EXCITEMENT BACK INTO  
**Harness Racing!**  
 September 8th - Nov. 13th  
 Post: 8 p.m./Wednesday through Saturday, 6:30 p.m. Sunday  
 U.S. Route 13 - Harrington, Del.  
**\*Free Grandstand Admission:** Opening nights/Wednesday-September 8th & Thursday-September 9th  
**\*Cook "N" Good Band Featuring Gene Cook:** Friday-September 10th after the races  
**\*Two Trifectas \*Exactas \*Quinellas \***  
 Join us for dinner in our Glass Enclosed Dining Room.....Reservations call 398-3840  
**Harrington Raceway**

**WE NEED CARS**  
 Before you sell or trade your present car, let us make you an offer! We will pay top dollar for good, reliable, clean used cars. Before you buy, give us a try!  
**C&P Motors**  
 New & Preowned Cars  
 Rt. 13 & 113, Dover, DE.  
 Hours:  
 8 - 8 Mon. - Fri. 8 - 3 Sat.  
**734-9600**

**SEWER ROOTER SERVICE**  
 ... Fast Economical Drain Cleaning ...  
 • Residential • Commercial • Cleaning  
 UP TO AN 8 INCH PIPE  
 Call The Little Plumber ...  
**736-1898**  
 - Radio Dispatched -  
**ALFRED J. GILLIS INC.**  
 222 S. RAILROAD AVENUE - DOVER

**Wing It**  
 We have Red Wing 6" and 8" boots to fit  
 2126  
 Sizes 6-13  
 B-E-EEE Not all sizes in all widths  
 You've earned your Wings!  
**Red Wings**  
 Peck Bros. Farm Supply  
 Harrington - 398-3654

**FRESH**  
 • White & Yellow Peaches  
 • Red Delicious and Jonathan Apples  
 available at ...  
**FIFER ORCHARDS**  
 1/2 mile west of Wyoming on Grant St. extended - Mon. - Sat. 8-6, Closed Sunday  
 697-2141

**THE FIRST NATIONAL BANK**  
 Good Luck!  
 Two Locations:  
 Harrington - 398-3232  
 Canterbury - 284-3201  
 9-29

**WRECKER SERVICE**  
 FREE ESTIMATES  
 GLASS INSTALLED  
 FRONT END ALIGNMENT  
**Danny Roe and Sons**  
 AUTO BODY REPAIR  
**TELEPHONE**  
 422-7567  
 N. Walnut St. & 113  
 Milford, Delaware 9-8

**Chick's**  
 We bring out the WEST to you  
 Rt. 13 Harrington  
 Across from the fairgrounds  
 Open 7 days a week  
 398-453C  
 9-15

**FARROW REALTY**  
 17 Commerce Street  
 Harrington, Del. 19952  
 Office [302] 398-3455  
**HARRY G. FARROW, JR.**  
 BROKER  
 Home [302] 398-3250

**RACEWEEK** is taking over!  
 The new Dover Mall  
 September 18, 1982 9 a.m. - 9 p.m.  
 See your favorite race cars on the spot!  
 Free Prizes!  
 Be sure to come say Hello!  
 Call 398-3206 to place your ad in our special publication covering this super special event and big CRC Chemical race on September 19.

**GWYUS**  
 UNFORGETTABLE **AM 93**  
 Glen Miller  
 Peggy Lee  
 Nat King Cole  
 ELLA FITZGERALD  
 Mel Torme  
 Artie Shaw LES BROWN  
 Patti Page  
 FRANK SINATRA  
 Harry James  
 DENAH SHORE...  
 and More!  
**Coming September 2nd**  
**GWYUS**  
 UNFORGETTABLE **AM 93**  
 A Service Of WAFL Radio, Inc., Milford, Delaware

## Family asthma program offered by Delaware Lung Association

Do you have a child between the ages of six and twelve who have asthma? If so, then the Delaware Lung Association's Family Asthma Program may be of interest to you. This course, which is offered to both parents and their children with asthma, will be held September 29 - October 13, 6:30 - 8:00 p.m., (except the last session 6:30 - 8:30 p.m.) at the Dover Y.M.C.A., 1167 S. State Street, Dover, Delaware. Parents and their children will meet weekly with qualified health-care professionals including local physicians and a respiratory therapist. Pool facilities will be used for children during each session for breathing exercises and swimming instruction. During the course, children will be taught the following items: How to

attain a positive attitude toward themselves and their condition; How to use abdominal muscles to improve breathing; and How to ward off or handle acute asthma attacks.

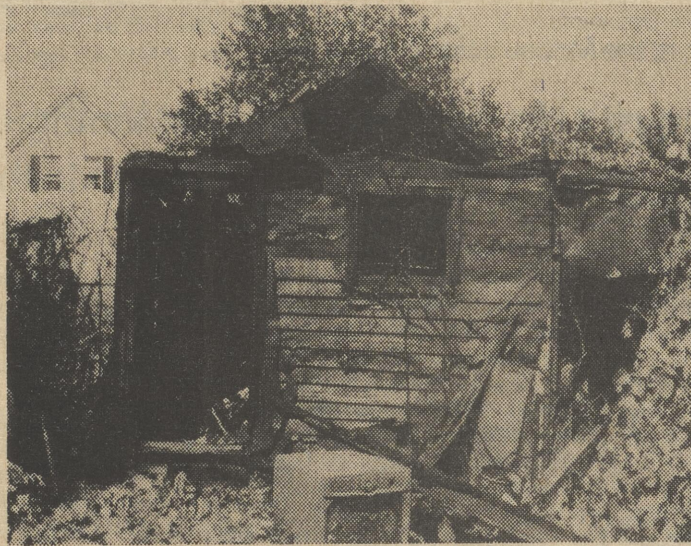
Parents will have the opportunity to meet with health-care professionals and other parents to discuss the treatment of asthma and to ask questions about this condition.

Teenagers and parents of children under 6 years old are also welcome to attend the adult sessions.

To register for this program, please contact Deborah Peck at 655-7258 or write to her at the Delaware Lung Association, 1308 Delaware Avenue, Wilmington, Del. 19806. The deadline for registration is September 24th.



Felton fire fighters were called out on Labor Day to put out the blaze which destroyed the shed [below] and damaged the rear portion of the home [above] on U.S. 13 across from the Diamond Roller Rink. The residence was unoccupied, but was being restored for future use.



### TOO LATE TO CLASSIFY

Registered Morgan Colt, Chestnut color, 2 years old, kind and gentle, \$1200 or best offer. Can arrange payments. Phone 398-4375. 2T 9-15

**FOR SALE** - Hand built gun cabinet, knotty pine, \$225. Call 284-9709 after 6 p.m. 2T 9-15

### Skipjack Races

[continued from page seven]

organizer Ben Evans started the races again.

The skipjack is the last commercial sailing fleet in the U.S. It has a shallow vee bottom, a jib-headed (leg o'mutton) sloop rig, a single aft-raking mast and a clipper bow. It developed in the 1880's because of a decline in the oyster business. The Skipjack was much cheaper to maintain than the first boats used.

The Oyster Fleet once numbered 2000 ships, but in 1981 it was down to 32 Skipjacks which are all that remain of the original fleet. Racing was always a part of the picture. Whenever the fleet moved, an impromptu race resulted. The stakes...better market prices for the cargo to the first Skipjack in port.

There were several thousand people on the shore line witnessing the event on Monday. The event was won by the F.C. Lewis, Jr., captained by Stanford White, 2nd was City of Chrisfield, captained by Arthur Daniels; 3rd, Dee of St. Mary's, 4th, H.M. Krentz, captained by Ted Webster; 5th, Sea Gull, captained by Jesse Thomas, and 6th, The City of Norfolk. The event took approximately 4 hours over a 13 mile course. A number of other events and contests were held throughout the day.

### Milford Memorial Hospital now being served by circuit riding medical librarian

On Sept. 7th, the Delaware Academy of Medicine began providing Milford Memorial Hospital with the services of a Medical Librarian on a weekly basis. Mrs. Jane Buch, M.L.S., the Medical Librarian will spend one day a week in the Hospital, visiting all departments that could benefit from her services and consulting with the medical, nursing, pharmacy, laboratory and administrative staffs regarding their needs for information.

## Primaries

[Continued from page three]

Areas of concern are keeping taxes down, maintaining a number of positive county programs already in place and land use - decisions concerning zoning, rezoning and the preservation of the remaining "good land" for the next century.

Reed considers the joint use agreement which will allow a commercial commuter service at Dover Air Force Base a positive step. He also approves the appointment of a county administrator.

A native of Kent County and educated in Kent County Schools, Reed lives near Felton. The early death of his father precluded a farming career, and Reed turned to business. He has been associated with the Singer store in the Blue Hen Mall, Dover, for 25 years. This year he bought the business which he will continue to operate as Delaware Sewing Center.

Reed is a former Chairman of the Board of Directors of the Blue Hen Center for Creative Living (a position he resigned early in August). He has worked with United Way and with Friends of Aging and has served in the Kent County area Advisory Council on Aging for Levy Court. Involved with various volunteer programs for the aging over the past ten or twelve years, Reed has also been in fairly regular attendance at Levy Court

meetings for five or six of those years. Among other things he has been involved in the Greater Dover Chamber of Commerce and the Blue Hen Mall Merchants Association.

### John S. Walls

John S. Walls, encouraged, he says, by friends and party members, will be a contender in Saturday's primary to award the Democratic nominations for the 4th Levy Court District.

Walls is concerned about land use in Kent County and especially with preserving agricultural land.

He also considers the management of the County and fiscal responsibility areas of high priority. He cites the current push for reassessment but says as long as the county remains "in the black", and is meeting its responsibilities to the people, he sees no need to rush.

A graduate of Milford High School, he spent two years at the University of Delaware.

He was associated with Draper Foods until 1971 and is currently agricultural manager for Vlasic Foods in Millsboro. He is also involved in farming.

Maintaining a long term interest in education Walls serves as a member of the Milford Schol Board and the Kent County Vo Tech School Board. This is his last year on the Milford Board and he does not plan to run again. He is also president of the Delaware School Board's Association.

## Coming Events

[Continued from page 2]

**CLASSES BEGIN SEPTEMBER 13** - September 1982 marks the initiation of the Bachelor of Science for registered Nurses degree program at Wesley College and courses are now available through the Office of Continuing Education. This degree has been designed exclusively for registered nurses who wish to continue their personal and professional growth through baccalaureate education. Classes begin Monday Sept. 13. Academic advisement and further information are available thru the Program Director, Patricia Donehower, at 736-2482 or by calling the Nursing Division at 736-2487.

**SEPTEMBER 13** - Fall classes held by the Wesley College Office of Continuing Education, will begin Monday Sept. 13 and run thru Thursday Dec. 16. This year campus classes will also include major courses for the Registered Nurses degree program at Wesley College. Lunchtime Learning, Twilight Learning, Evening and Directed Studies will be held at the Dover Air Force Base. All classes are open to the public. Registration will run thru Sept. 8 with a special evening registration held from 7-8 p.m. at the Information Desk, first floor of the College Center.

For further information, call the Office of Continuing Education at 736-2484.

**SEPTEMBER 14** - On Tuesday, Sept. 14, 1982, the Delaware Nurses' Association's Gerontology Division of Practice is sponsoring a continuing education program *Management of the Adult Patient with Emphysema*. A choice from four workshops is offered and speakers will cover the areas of medicine, respiratory therapy and nursing care. This offering is from 5:30 p.m. to 10 p.m. at the Sheraton Brandywine on Concord Pike, Wilmington, DE. The \$15 fee for DNA members and \$17 for non-members include a delicious buffet dinner. Call DNA at 655-6297 for reservations.

**SEPTEMBER 14-23** - A study skills workshop will be offered by Delaware State College Continuing Education on Tuesdays and Thursdays, Sept. 14 thru Sept. 23, from 5 p.m. to 7 p.m. at the Jason Library. Fee is \$5.00 or free to matriculated Delaware State College evening students. Call Continuing Education for information or registration 736-5164.

**SEPTEMBER 14** - "Through the Looking Glass" is the theme for the ninth annual Rehoboth Art League Fashion Show Luncheon to be held at

the Rehoboth Beach Convention hall on Tuesday, Sept. 14, 1982.

Hambergers & Mullions of Wilmington and Newark, DE will present fall and winter fashions for both women and men. We will see new colors and materials used in exciting new styles. English's of Salisbury, MD will again cater out luncheon and "Mr. Rehoboth Beach" Sammy Ferro will provide our music.

Reservations for the Fashion Show Luncheon may be made at the Rehoboth Art League. For additional info call Mrs. Charles Whitby, 3rd., 227-0720 or Mrs. Jane Sauerhammer, 227-3778.

**REHEARSALS BEGIN SEPT. 14** - The Delaware Choral Society announces plans to begin rehearsals for their 25th anniversary Christmas Concert. The group will be performing Bach's "Christmas Oratorio", selected choruses from Handel's Messiah, and various Christmas carols. Under the direction of Dr. Peter J. McCarthy, the Society will be accompanied by the Delaware Chamber Ensemble.

Rehearsals are scheduled to begin Tuesday evenings starting Sept. 14th, 1982 from 7:30 - 9:30 p.m. in the Social Hall of the Presbyterian Church of Dover located on S. State & Reed Streets, in Dover. No auditions are required and tenors are especially needed. The concert date is set for Sunday, December 5th at 3 p.m. at the Delaware State College Auditorium. For more information about the Choral Society, please call 734-8551.

**SEPTEMBER 15** - Delaware Art Museum's monthly bus trip *Wheels to New York City* is scheduled this month for September 15. Round-trip fare is \$24 (\$21 for Museum members). The bus leaves the Delaware Art Museum at 8 a.m. and arrives at the Plaza Hotel in New York at 11 a.m. then goes on to the Metropolitan Museum of Art at 11:15 a.m. On the return trip, the bus leaves the Plaza Hotel at 6 p.m. and arrives back at the Delaware Art Museum at 8:30 p.m.

To reserve a seat, call Carolyn Lester at the Museum, 571-9590.

## Heritage Day

[Continued from page three]

mostly be held on a stage at the Senior Center Parking Lot. The dance will be at the First National Bank Parking Lot.

In a nearby area there will be games for children as well as a small train and possibly a miniature Model T to ride.

In addition to events already announced, there will be special activities offered by the Harrington Police Department and a Heritage Day "Show 'n Shine" to be held at Taylor and Messick's Antique Museum.

For complete information on the weekend watch next week's *Harrington Journal* which will contain a special Heritage Day supplement.

## Resource directory available for patients with lung disease

A thirty-three page resource directory entitled *Help For The Patient With Lung Disease* is now available to patients with lung disease. According to Deborah Peck, Health Educator at the Delaware Lung Association, the resource directory has been designed to help the lung disease patient by connecting the patient with the services throughout Delaware that he may need.

Some of the categories included in the directory include: *Health Care Services, Hospitals, Medical Services, Respiratory Equipment and Supplies, Social Services and Transportation.*

The resource directory is free to anyone who requests a copy. For a free copy, please call or write the Delaware Lung Association, 1308 Delaware Ave. Wilmington, DE 19806, 302-655-7258.

## ELECT WILSON REED to Levy Court

Saturday, September 11  
7 a.m. to 8 p.m.

He has the time and knowledge to serve you:

- Has regularly attended Levy Court meetings for over five years.
- Has worked as a volunteer for the elderly and done community service for over ten years.
- Is dedicated to keeping taxes low.
- Is hard-working, open, conscientious and honest.
- Is interested in serving all people.

**Who should vote:** Registered Democrats in Andrews Lake, Bowers Beach, Canterbury, Frederica, Houston, Lebanon, Magnolia, Milford and Rising Sun...and everywhere in between (4th Levy Court District).

"From my business background, I think I know how to stretch a buck and I think I have a good understanding of these times we are living in. I have enjoyed serving you as a businessman and now I want to serve you as your 4th Levy Court Commissioner. I will appreciate your support on September 11."



*Wilson M. Reed*

Paid for by the Committee to Elect Reed.

Number 2 in a series of memoranda from Milford Memorial Hospital, helping you to KNOW YOUR HOSPITAL -

## "HOSPITAL VISITORS - PART II"

Although Milford Memorial Hospital encourages relatives and friends to visit patients, it has a duty to protect patients from abuses of visiting privileges that may slow their recovery or be disturbing to them. One protection against this is the restriction on the number of visitors permitted to visit a patient at one time.

In Milford Memorial Hospital, only **TWO** visitors may visit a patient at one time. If the patient you wish already has two visitors, please go to the Waiting Room of the Nursing Unit and wait until you can visit the patient without exceeding this important limitation of just **TWO** visitors per patient. (The Coronary Care and Intensive Care Units allow only one visitor at a time.)

If you are visiting a patient in a semi-private room, the other patient's condition and need for rest must also be an important consideration. Although one patient may feel well enough to enjoy visitors, the other patient in a semi-private room may be quite ill and be disturbed by too many visitors. More than two visitors per patient results in overcrowding of the room and discomfort for everyone, including the patient being visited. Receiving visitors is a pleasure for most hospital patients, but can be tiring for them and, in excess, may even slow their recovery. Milford Memorial Hospital's limitation on the number of visitors allowed at one time is a reasonable precaution taken entirely for the patient's welfare. This policy is enforced by hospital security personnel.

Remember - just **TWO** visitors per patient!  
KNOW YOUR HOSPITAL and help it continue to be an institution our community can be proud of.

### MMH VISITING POLICY

General Hospital areas - 12 noon to 8 p.m.  
Maternity - Fathers: 12 noon to 8 p.m.  
Grandparents & patient's children - 7 to 8 p.m.  
Critical Care Units - 1 to 2 p.m. & 7 to 8 p.m.  
Immediate family only.

### RESTRICTIONS

No children under 12 years of age.  
Two visitors per patient at one time.  
Visits should be limited to 15 minutes.  
No smoking in patient areas.  
All visiting hours end at 8 p.m.



## Milford Memorial Hospital

Clarke Avenue  
Milford, Delaware 19963  
302-422-3311

## ADVERTISER

GIVE YOUR BUSINESS SALE/A LIFT



Advertise in... HARRINGTON JOURNAL

**RAL**

**Rehoboth Art League**

**9th Annual Fashion Show**

Tuesday, September 14th  
Convention Hall  
Luncheon 11:30 A.M.  
Tickets \$10.00

Mail Check to Mrs. Charles Whitby  
for RAL Fashion Show  
P.O. Box 84, Rehoboth

Fall and winter classes - Call 227-8408  
Oct. 6 Wed. A.M. Jack Lewis - Adults  
Oct. 9 Sat. A.M. Debra Jahnnigen - Juniors

**DAWSON BUS TOURS**

**302-697-9501**

Toll Free No. for New Castle & Sussex Counties Only.

Gift Certificate Available **800-282-8525**

Sept. 18 & Oct. 24 ..... Three Little Bakers "Babes in Arms"

Sept. 18 & Oct. 16 ..... Williamsburg Pottery

Sept. 25 ..... Great Adventure

Oct. 3 ..... Phillies vs. New York (300 Level Seats)

Oct. 9 & Nov. 6 ..... Baltimore Inner Harbor

Oct. 23 ..... Reading Outlets

Oct. 24 ..... Mel Tillis, Valley Forge

Oct. 31 ..... Rich Little - Bernadette Peters  
Valley Forge

Nov. 13 ..... Smithsonian Institute



**CLASSIFIED RATES**  
 CLASSIFIED DISPLAY: \$1.00 per col. inch  
 DEADLINE: 11:30 a.m. (no later than 12 noon)  
 Office: Inception & Cancellation: Mon. 12 noon  
 Mail to: The Harrington Journal, 19 Commerce St., Harrington, DE 19922  
 Phone: 398-3206  
 \$1.75 for 25 words or less - 5¢ each additional word.  
 The following ads can run FREE for up to FOUR WEEKS!  
 Household items under \$500  
 Lost & Found  
 Employment Wanted  
 (Not to be confused with Help Wanted)  
 Phone: 398-3206



**FOR SALE** - electric hot water heater, excellent condition, \$90. Call 398-4543 after 6 p.m. 4T 9-15

**Chrysanthemums** - \$1.50 each. Over 18,000 gallon containers of these short field-grown plants. We have over 200 varieties which will be open by Sept. 15. Also, hanging baskets. Open every day till dark. Located at the edge of Denton on the Denton-Greensboro Road. Parker Stone 3T 9-22

**CORRECTIONS**  
**READ YOUR AD THE FIRST DAY IT APPEARS!**  
 Any corrections to be made must be called in from 8 a.m. to 9 a.m., the day after your ad appears. One (1) extra insertion will be made at no charge for an error not the fault of an advertiser. **The Harrington Journal WILL NOT be responsible for more than [1] incorrect insertion.**

**AUTOS FOR SALE**  
 Jeeps, Cars, Trucks under \$100 available to local gov't sales in your area. Call (refundable) 1-714-569-0241 ext. 5089 for directory on how to purchase. 24 hrs. 3T, 9-22

**SITUATION WANTED**  
**WILL BABY SIT** - Reliable and dependable teenager will baby sit in your home in Harrington area. References furnished upon request. Call 398-8061 any time. TFN

Reliable cleaning lady desires housework to do. Have own transportation. \$25 per day hours 9 to 3. Call 398-3035. Will do ironing, laundry, etc. 2T 9-15

**HELP WANTED**  
**EXPERIENCED** overlock, single needle and blind stitch sewing machine operators. Apply at Ann G & G, 45 Clark St., Harrington, DE 398-8466. TFN

Wanted, licensed qualified real estate salesperson. 398-3455. TFN

**WANTED** - Writer for news and socials for Milford area, call Anne, *Harrington Journal*, 398-3206. TFN.

**HELP WANTED** - Qualified person to work as a writer, advertising sales and newspaper delivery for RACEWEEK. Must be able to write clearly. Call Anne 398-3206. TFN

Responsible serious high school student to volunteer services in exchange for on the job training in office skills. Your chance to acquire on the job experience to help you when looking for full time job after graduation. Call 398-3752, speak to Anne. TFN

**WANTED** - Writer for Magnolia area for news and socials. Call Anne, *Harrington Journal*, 398-3206. TFN

**WANTED** - Reporter for Woodbridge School District. Call Anne, *Harrington Journal*, 398-3206. TFN

**MOBILE HOMES FOR SALE**  
 New 1982 14x70, 3 bedroom, furnished and set up on your lot, \$12,995. Don't pay more! Financing available. Kent Mobile Homes, 2170 No. duPont Hwy., Dover, DE. 674-8860. TFN

**FOR SALE**  
 A full line of W.T. Rawleigh Co. Products available. Phone 422-5343. 4T, 9-8

**FOR SALE** - electric clothes dryer, avocado green, excellent condition, \$90. Call 398-4543 after 6 p.m. 4T 9-15

Corrugated galvanized steel roofing and siding sheets. All sizes. 8', 10', 12'. **CHEAP.** Closeout. \$5 or less per sheet. Cash and carry. 1-215-831-9800. 4T, 9-15

**LOST AND FOUND**  
**FOUND** - Female Siamese on Farmington-Harrington Road. Call 398-4305. 4T 9-8

**PUBLIC NOTICE**  
 I am not responsible for any bills other than those made by myself, David P. Hrupsa, Harrington, DE, 3T, 9-8

**CITY OF HARRINGTON REGULAR COUNCIL MEETING**  
**SEPTEMBER 13, 1982**  
**7:30 P.M.**  
**CITY HALL**  
 1T, 9-8

**WANTED TO RENT**  
 Furnished or unfurnished room or small apartment. Single man with references. Con Rail employee. Call after 3:30 p.m. 398-8322. Tfn

**FOR RENT**  
 3 1/2 bedroom two story duplex. Neat and clean. Ready to move in. Harrington in-town location. Heat, water, sewer & trash included in rent. Applications now being taken.

**FARROW REALTY**  
 398-3455

**FOR RENT** - (1) Warehouse space (2) Office space. Do you want to go into business and can't afford high rents? See us and we will make you a deal you can't resist. Property located Hanley St., Harrington, DE U.L. Harman, Inc. 302-492-3456, 301-482-6242. Ask for Edgar. 3T 9-15

Anna Tucker and family  
 1T 9-8

The husband and family of Elma R. Stauffer wish to thank Dr. Artemio Arnilla, the nurses, and aides for the care she received while a patient in Milford Memorial Hospital. We also wish to thank the Doctors and nurses in Salisbury Peninsula General Medical Center for their care and Rev. C.J. Robinson for his visits and words of comfort. The visits, prayers, cards, flowers, food and other acts of kindness of relatives, friends and neighbors were also appreciated during her illness and death.  
 Robert C. Stauffer,  
 Elma S. Price  
 Thelma S. Rash  
 1T 9-8

**WANTED**  
 Small coal burning stove. Must be good condition. Day, 398-3752, eve, 398-4285. TFN

**SERVICES**  
 Life Time plastic water well. Call Ken Wood at Life Time Well Drilling, 301-479-0397. TFN

Poultry Growers Insurance coverage, including collapse, competitive rates for buildings, equipment, and all farm insurance. MARVEL AGENCY, Insurance, Milford, Del. 422-9626. TFN

Typesetting, layout & composition services. Small and large jobs. Professional results. Quality work. Harrington Journal. 398-3752. TFN

**ATTENTION LANDLORDS** - List your rental properties with us. Qualified tenants waiting. We will screen applicants, prepare & execute lease, collect rent and furnish complete statement of your account monthly. Call 398-3455 Farrow Realty. TFN

Quality printing. Letterheads, forms, envelopes, camera ready or custom. Competitive prices. Harrington Journal. 398-3752.

Experienced aides hospital and home care. Please call 734-7005 or 678-0926, Geriatric Services of Delaware, Inc. 4T 9-22

**CARD OF THANKS**  
 Our family wishes to express a grateful thanks to all our friends and neighbors for the flowers, food and cards which helped us through a difficult time with the loss of my husband, Edgar Tucker.

Anna Tucker and family  
 1T 9-8

The husband and family of Elma R. Stauffer wish to thank Dr. Artemio Arnilla, the nurses, and aides for the care she received while a patient in Milford Memorial Hospital. We also wish to thank the Doctors and nurses in Salisbury Peninsula General Medical Center for their care and Rev. C.J. Robinson for his visits and words of comfort. The visits, prayers, cards, flowers, food and other acts of kindness of relatives, friends and neighbors were also appreciated during her illness and death.  
 Robert C. Stauffer,  
 Elma S. Price  
 Thelma S. Rash  
 1T 9-8

**Kent Center Vo-Tech Menu**

- Monday, Sept. 13  
 Hamburg on Roll  
 Scalloped Potatoes  
 Celery & Carrot Sticks  
 Applesauce Cake
- Tuesday, Sept. 14  
 Veal Pattie w/creole Sauce  
 Candied Sweet Potatoes  
 Buttered Peas  
 Roll & Butter  
 Chilled Fruit Cocktail
- Wednesday, Sept. 15  
 Pizzaburgers  
 Buttered Corn  
 Tossed Salad  
 Sliced Pineapple
- Thursday, Sept. 16  
 Hot Beef Sandwich  
 Mashed Potatoes  
 Buttered Mixed Veg.  
 Vanilla Pudding
- Friday, Sept. 17  
 Chicken Rice Soup  
 Flying Saucer  
 Buttered Limas  
 Peanut Cookies

**Lake Forest Menu**

- Monday, Sept. 13  
 Cheeseey Pizza  
 Everybody's favorite veg.  
 Pineapple Chunks  
 Chilled Milk
- Tuesday, Sept. 14  
 Ham "Sam"  
 Company Peas  
 Petite Banana  
 Chilled Milk
- Wednesday, Sept. 15  
 Spaghetti  
 Tossed Salad  
 Fruit Cup  
 Hot Roll/Butter  
 Chilled Milk
- Thursday, Sept. 16  
 Hamburger/Roll  
 Golden Patties  
 Cherry Crisp  
 Chilled Milk
- Friday, Sept. 17  
 Hot Diggity Dog  
 Baked Beans  
 Orange Juice  
 Chips  
 Chilled Milk

**DISCHARGES**  
 Sandra Chadwick, Teresa Creed, Elliott Danley, Margaret Delaney, Judith Glasco, Senara Hastings, Daniel Lewis, William Mondshern, Christine Morrison, Sandra Perry, Joyce Rice, Lavana Scott, Ida Turpin, Bernice Walls.

**ADMISSIONS**  
 Harry Betts, Margaret Gillespie, Mary Wilson, Levi Strand, Madelyn Walbridge, Timothy Hughes, Kathryn Sharp, Jeffery Maul, Elythe Flakbinder, Ralph Greenlee, Sr., Lester Schich, Florence Taboca, Robert McLoughlin, Kendra Schlabach.

**DISCHARGES**  
 Jane Brock, Alice Elliott, Margaret Hall, Malinda Horne, Richard Hutchins, William Johnson, Lisa Osborne, Ethel Rash, Rodney Rust.

**ADMISSIONS**  
 Charles Torbert, Elizabeth Donovan, Lois Ewing, Allen Manaval, Barbara Smith, Benjamin West, Gwendola Cannon, Jamarra Hanzer, Leon Scott, Betty Stardevant, Sandra Vincent, Ralph Hober, Jr., Walter Hollinger.

**DISCHARGES**  
 George Brown, Dawn Hick, Timothy Hughes, Wm. Johnson, Lauren Lallquist, Robert McLoughlin, Wm. McCullough, Wm. Myer, Jr., Annie Penn, Natasha Waters.

**BIRTHLIST**  
 8-26-82  
 Jerry & Terry Sulof, Lincoln, girl  
 8-27-82  
 Dale & Kimberly Melvin, Felton, girl  
 John & Mary Ireland, Dover, girl

**TIDES AT BREAKWATER HARBOR**

SEPT.	HIGH	LOW
9	1:01A 1:35P	7:03A 7:54P
10	1:57A 2:36P	7:59A 9:00P
11	3:03A 3:44P	9:00A 10:11P
12	4:15A 4:53P	10:07A 11:21P
13	5:27A 6:09P	11:17A 12:22P
14	6:33A 7:28A	0:23A 1:20A
15	7:54P	1:21P

This chart is adjusted for daylight savings time. AM time is shown by an A and PM time is indicated by a P. To determine the time of any location shown in the chart below, add or subtract the hours and the minutes as indicated.

**Delaware Bay Lighthouses**  
 Brandywine Shoal Light - High Tide +0:00, Low Tide +0:28; Fourteen Foot Bank Light - High Tide +0:15, Low Tide +0:48; Miah Maul Shoal Light - High Tide +0:28, Low Tide +1:08; Elbow of Cross Ledge Light - High Tide +0:40, Low Tide +1:21.

**Delaware Bay, Western Shore**  
 Cape Henlopen - High Tide -0:05, Low Tide -0:05; Roosevelt Inlet - High Tide +0:09, Low Tide +0:13; Missillon River Entrance - High Tide +0:38, Low Tide +1:00; Murderkill River Entrance - High Tide +0:56, Low Tide +1:32; St. Jones River Entrance - High Tide +0:57, Low Tide +1:33; Mahon River Entrance - High Tide +1:13, Low Tide +1:52; Leipsic River Entrance - High Tide +1:18, Low Tide +1:59; Leipsic, Leipsic River - High Tide +3:42, Low Tide +3:50.

**FOR SALE**  
 Merlita Jewelry Dealer, 398-3188, weekdays 9-9, weekends 9-12 noon. 4T 9-29

**BINGO** Every Sunday Night  
 7:30 P.M. Harrington Fire House  
 Mechanic Street 398-8931

Early Bird Games - \$50  
 Cash Prizes \$15-\$50

Free Admission

\$200 Jack Pot

**RAUGHLEY INSURANCE SERVICE**  
**HARRINGTON, DELAWARE**  
*Tom Parsons*  
**PHONE 398-3551**

**Astro-Analysis**  
 By Sonia McGinnis

**HOROSCOPE FOR THE WEEK OF SEPTEMBER 12, 1982**

**ARIES** [March 21-April 19] - Take pride in work output; by being more detail minded, taking present obligations seriously, you continue to move ahead. Key now is to recognize limitations, don't undertake too many responsibilities.

**TAURUS** [April 20-May 20] - You're attracted to young and vibrant people and a light pace that's less demanding. Enjoy pursuing outside activities and interests that offer a favorable change of pace.

**GEMINI** [May 21-June 21] - Look at real estate possibilities with an objective point of view. Most important activities this week should continue to be centered around home base with close family members.

**CANCER** [June 22-July 21] - The contacts you make this week can play an integral role in future progress. By making the proper business connections, airing views more openly, you can develop a more secure footing.

**LEO** [July 22-August 21] - Stars continue to favor for increasing capital. Show assertiveness with financial projects. Good also for short travels and dealings with close kin. You communicate ideas well now.

**VIRGO** [August 22-September 22] - Be straightforward where personal pursuits are involved; your direct approach is far more effective. As a high energy trend continues you enjoy a more prosperous outcome through your own efforts.

**LIBRA** [September 23-October 22] - Not a week to scatter interests; focus on one important project for best results. There's a tendency to become involved in charitable causes but don't let emotions enter the picture.

**SCORPIO** [October 23-November 21] - Even though associates are important with your plans this week, you should plan for some extra time alone. Don't force issues; impatience may prompt you into unnecessary action.

**SAGITTARIUS** [November 22-December 20] - Although chances for getting ahead are great, you should take the time needed for more careful planning. Some confusion as to exactly where you stand with personal progress may be evident.

**CAPRICORN** [December 21-January 20] - Educational pursuits and new studies should be foremost with plans. An excellent time also for making travel arrangements and contacts with out of town people.

**AQUARIUS** [January 21-February 19] - A close associate may undertake more responsibility with joint concerns; you can now play a less active role and still reap the benefits of success. Things develop in your favor as week progresses.

**PISCES** [February 20-March 20] - You can enjoy a stimulating, competitive week. Those you're in close contact with now prompt you into a more positive course of action. Most things you're involved with now get public attention.

**The Weekly Crossword**

**across**

1 A VULGARIAN  
 4 GR LETTER  
 8 EXCLAMATION  
 12 SHOULDER PREF  
 13 EPOCHAL  
 14 FRIGID  
 15 POLITICAL PARTY ABBR  
 16 MOUTH COLORING  
 18 MONTH SP  
 20 ALSO  
 21 BIBLICAL PREF  
 24 TIDES  
 25 VINDICATORS  
 32 HAND OVER  
 33 LACE  
 34 EASTERN CITY  
 38 GRASSLAND  
 39 AGES  
 39 DRIVING  
 41 WAVES  
 43 PHEASANT BROOD  
 44 WATER FR  
 45 GLACIAL RIDGE  
 50 SEMIOTICS  
 55 ADAM'S MATE  
 56 GOLF TERM

**down**

5 RAP  
 7 AND  
 8 CONTAINING ACD  
 9 THIS L  
 10 DEERLIKE ANIMAL  
 11 DOCTORS' ABBR  
 17 SMALL BIRD  
 19 OPERATE  
 22 NINE ELEVEN  
 23 MANMADE FIBER  
 25 SANDWICH SHOP  
 26 VEININ PORT  
 27 KEEP  
 28 ASSERT  
 29 LENGTH MEASURE  
 30 VIVACITY  
 31 EGYPTIAN KING  
 35 PROFITRY  
 38 UNIFORM  
 40 THING LAW  
 42 RUSSIAN RIVER  
 45 STATE  
 46 HOLD TO  
 48 FERNAL  
 49 COUNT ON  
 50 FEM SAINT  
 51 SICK WIDTH  
 52 SEA FR  
 53 ALTAR NAME  
 54 PRES' NICKNAME

**Last Week's Solution**

57 LOCAL LAWS  
 58 ISLAMIC  
 59 LONG FISH  
 60 SPOOKY  
 61 SANCTIFIED  
 61 SHOOP

1 CIPHER  
 2 50 BE IT  
 3 ROUND ROOF  
 4 APPERTAINS  
 5 ASSAM SILKWORM

**Hospital Notes**

**HOSPITAL NOTES**  
 8-27-82  
**ADMISSION**  
 Rachel B. Brown, Teresa A. Creed, Floyd R. Hrupsa, Bernice D. Walls, James H. Watson, Janet D. Bartley, Robert R. Brandt, Kathryn A. Burnett, Jay R. Hulstine, Jr.

**DISCHARGES**  
 Lewis Casler, Paul S. Gurdak, Jackie L. Morris, Jr. Jacqueline M. Unsworth, Robert A. Unsworth, John J. Watson III, Margaret M. Wood.

**ADMISSIONS**  
 Anna F. Jefferson, John T. Cantwell, Malinda E. Horne, Lucille Logan.

**DISCHARGES**  
 Georgia K. Adams, William P. Dellinger, Sr., Stella Nesmith, Robert L. West, Dorothy M. Wilhelm.

**ADMISSIONS**  
 Jane Brock, Kathryn Cubbage, Lottie Collins, Ruth Shockley, Eunice Carter, Sandra Chadwick, Elliott Danley, Margaret Delaney, Alice Elliott, Judith Glasco, Anna Jefferson, Christine Morrison, Annie Penn, Sandra Perry, Joyce Rice.

**DISCHARGES**  
 Kim Melvin, Anne Sparklin.

**ADMISSIONS**  
 Ruth Donophan, Paul Mitchell, Marie Messick, Oscar Dickerson, Lisa Osborne, Frank Flamer.

**DISCHARGES**  
 Takyah Adams, Beatrice Benson, Robert Brandt, John Cantwell, Eunice Carter, Wayne Donovan, Sylvia Finkbinder, Floyd Hrupsa, Patricia Jester, Alice Jones, Doris Krouse, Charlotte Moses, Bernard Palmer, Carmen Reid, Doris Vongoes.

**ADMISSIONS**  
 Dawn Hick, Anthony Gallo Jr., Wm. Myer, Jr., Lauren Lillquist, Richard Hutchins, Margaret Reed, Dorothy Johnson, Natasha Waters, Robert Field Jay Hulstine, III, David Vogl, Howard Warner, William Hall.

**PUBLIC AUCTION**  
**Pre-Harvest & Inventory Reduction Sale of Farm Equipment, Tractors, Harvest & Tillage Equipment**

Wednesday, September 15, 1982  
 10:00 A.M.  
 [Rain or Shine]

Location: Taylor & Messick, Vernon Road, Harrington, Delaware

**TRACTORS**  
 1 Model 2030 John Deere  
 1 Model 8630 John Deere  
 1 Model 1135 Massey Ferguson with Duals  
 1 Model Super M International  
 1 Model 77 Oliver  
 1 Model 800 Case  
 1 Model B John Deere

**COMBINES**  
 1 Model 6600 John Deere-Cab & Air  
 3 Model 7700 John Deere-Cab & Air  
 2 Model 105 John Deere-Cab

**JOHN DEERE PLATFORMS**  
 1 14 Ft.  
 3 15 Ft.  
 2 16 Ft.  
 2 18 Ft.  
 1 20 Ft. Flexible  
 1 Model 216 Ft. Flexible

**CORN HEADS JOHN DEERE**  
 3 444 John Deere  
 2 210 John Deere  
 1 234 John Deere for 55 Combine  
 3 435W John Deere for 105 Combine

**PLANTERS**  
 1 J.D. 7000 8 Row 30 in. with Fertilizer Attachment  
 1 A.C. 8 Row No Till with Tank  
 1 8 Row J.D. on 70 Folding Bar  
 1 494A J.D. 4 Row with Fertilizer Attachment  
 1 1240 J.D. 4 Row with Fertilizer & Insecticide  
 2 1290 J.D. 36 in. 8 Row with Fertilizer Attachment  
 1 8 Row J.D. 36 in. 71 Flexible on Tool Bar  
 1 8 Row Oliver 36 in. 3 Pt. with Gauge Wheels

**DRILLS**  
 2 9000 John Deere 14 Ft. with 2 Drill Hitch (Good Condition)

**PLOWS**  
 1 Model 1450 5 Bottom John Deere 16 in.  
 1 Model F245 7 Bottom John Deere 16 in.  
 1 6 Bottom White 16 in.  
 1 1 Bottom International for C. Tractor

**DISC HARROW**  
 1 230 John Deere 25 Ft. Folding  
 1 BWA John Deere 16 Ft. Folding  
 1 BWA John Deere 15 Ft. on Wheels  
 1 10 Ft. Case on Wheels  
 2 110 John Deere 14 Ft. on Wheels

**PACKERS**  
 1 30 Ft. Brillion Flat Fold  
 1 21 Ft. Brillion Folding

**SPRINGTOOTH**  
 2 8 Ft. Pull Type John Deere  
 1 16 Ft. 3 Pt. Hitch John Deere  
 1 A.C. 24 Ft. Wheel Type

**CULTIVATORS**  
 4 Row John Deere Front Mount  
 4 Row I.H. Front Mount  
 2 Row I.H. Front Mount  
 4 Row Ford Front Mount

**FIELD CULTIVATORS**  
 20 1/2 Ft. Brillion Field Cultivator with Harrow Attachment  
 35 1/2 Ft. John Deere Field Cultivator with Harrow Attachment

**NEW MACHINES**  
 John Deere Barn Elevator

John Deere 7 Ft. Blade  
 6 Row Lilliston Cultivator  
 # 50 John Deere Side Mounted Mower  
 Hanson Snow Blower  
 16 Ft. Pull Type Brillion Field Cultivator  
 16 1/2 Ft. McKee Field Cultivator with Rolling Baskets  
 New Straw Spreader for 6600 & 7700 Combines

**MOWERS**  
 1 #5 John Deere 7 Ft.  
 1 L1 John Deere Mower  
 1 Beet Harvester

**LOADERS**  
 1 #47 John Deere  
 1 158 John Deere

**ELEVATOR**  
 1 30 Ft. with Wheel Carrier

**BLADES**  
 1 Model 863 for 8630 Tractor  
 1 Front Blade for Model A International Harvester  
 1 6 Ft. 3 Pt. Hitch

**AUTOMOBILE, TRUCK & TRAILER**  
 1 1971 Ford Panel  
 1 1968 Oldsmobile  
 1 Stock Car Trailer (not completed)

**LAWN MOWERS**  
 1 11 H.P. Ward  
 1 12 H.P. Massey Ferguson

**MISCELLANEOUS**  
 2 Sets Dual Wheels with Tires 18.4.34  
 Dual Wheels less Tires  
 Rear Tractor Weights Ford-I.H.-John Deere-Massey Ferguson  
 Front Tractor Weights - John Deere, I.H.  
 Tractor Draw Bar  
 Tractor Front Bumpers  
 Combine Weights  
 Belt Pulleys  
 Remote Cylinders & Hoses - J.D., I.H., Ford, M.F.  
 3 Pt. Hitch for H or M. I.H.  
 2 - 3 Pt. Hitches for 60-70 John Deere  
 Roll-o-Matic for John Deere  
 Wide Front for 420 John Deere  
 2 - Fertilizer Attachment for John Deere Planter - 4 Row  
 Complete Plow Bottoms  
 Rolling Coulters  
 Fenders for Cult., I.H., J.D., FORD, A.C.  
 G.S.A. for Grain Drills  
 4 Cylinder Wisconsin Motor  
 6 Cylinder M.H. Motor  
 6 Cylinder I.H. Motor off Combine  
 Manure Buckets  
 Attachments for Manure Buckets

**TERMS:** Cash, or Approved Check w/Current Letters of Credit from your bank.

Financing on large items can be arranged prior to the sale and Wavier of Interest until January 1, 1983 on Combines, March 1, 1983 on Tractors, April 1, 1983 on Planters.

**DOOR PRIZES!**  
 New John Deere Riding Mower will be given away FREE to the holder of the "LUCKY NUMBER" at the end of the Sale. You must register and be present to win!

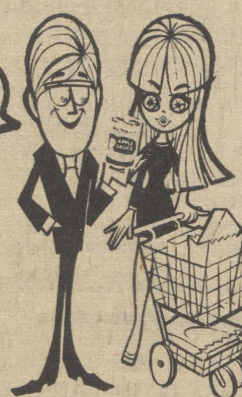
Taylor & Messick, Inc.  
 Owner

Wilson's Auction Sales, Inc.  
 Dave Wilson  
 Auctioneer & Sales Manager  
 422-3454 or 856-2110

2T, 9-8

Check Out These Super White House Specials!

You can't beat White House products for quality & savings!



Apple Butter  
28 oz. Jar  
79¢



Apple Juice  
64 oz. Jar  
\$1.39

Cider Vinegar  
64 Oz. Jar  
\$1.39



Apple-Cherry Juice 32 oz. Jar 69¢

Apple Sauce  
4-8 1/2 oz. Cans  
\$1.00



U.S.D.A. Choice Chuck Roasts-End Cuts \$1.49 lb.

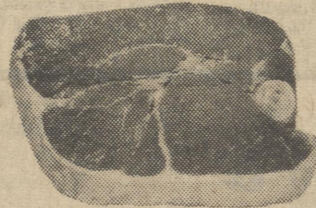
-Center Cuts \$1.59 lb.

-Boneless \$1.89 lb.

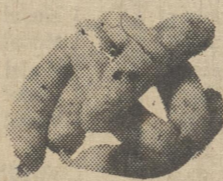
Boneless Crosscut Roasts \$2.49 lb.

Ground Chuck (Lean-Fresh Ground) \$2.09 lb. 5 lbs. or More \$1.99 lb.

U.S.D.A. Choice Chuck Steaks (Well Trimmed) \$1.69 lb.



Quillens Fresh Homemade Pork Sausage  
Loose \$1.59 lb Stuffed \$1.69 lb



Hunts Whole Tomatoes  
2-14 1/2 oz. Cans \$1.00



Hunts Tomato Paste  
3-6 oz. Cans \$1.00



Hormel Spiced Luncheon Meat  
Deli Sliced \$1.59 lb.

Aunt Jemima Pancake Syrup  
24 oz. Container  
\$1.49



Mrs. Smiths Frozen Pumpkin Pie  
26 oz. Pkg. \$1.39



Seneca Mushrooms Stems & Pieces  
8 1/2 oz. Can \$1.39

Yellow Onions 19¢ lb.

California

Nectarines 49¢ lb.



Wesson Oil  
24 oz. Bottle  
99¢



Van DeKamps Batter Dipped  
French Fried Fish Fillets  
12 oz. Pkg. \$1.59



Esskay's  
Early-Joy Sliced Bacon  
1 lb. Vac Pac  
\$1.59

Dairy Market Country  
Enriched White Bread  
20 oz. Loaf 59¢

Taster's  
Choice  
Decaffeinated  
100% Freeze Dried Coffee



Tasters Choice  
Freeze  
Dried Coffee  
Regular  
or  
Decaffeinated  
8 oz. Jar \$4.99



San-Giorgio Spaghetti  
or Spaghettini  
2-16 oz. Pkgs. \$1.00

# Quillen's Dairy Market

We reserve the right to limit quantities.

For your shopping convenience, we are open every day of the year!

9/9-10-11

Phone 398-8768

DORMAN STREET  
HARRINGTON, DE.

Southern States

# FALL SALE

Now thru Sept. 25, 1982

## Cat Food Special

**\$7.95** 25 lb. price on Southern States L1 Red Cat Dinner. It's the taste cats love, the nutrition they need.



## Dog Food Special

**\$9.95** 50 lb. Stock up and save now on Southern States Big Red Nuggets. It's top nutrition plus top taste that's guaranteed to please.



## CALF MILK REPLACER REBATE

Get \$5.00 back on purchase of 100 lb. of any combination of Southern States calf milk replacers. Choose Calf Maker in 25- and 50-lb. bags, Nursing Formula in 50-lb. bag. Store receipt must be enclosed. Deadline, Nov. 1, 1982. One rebate per patron.

Betty Hawks, Feed Division, Southern States Cooperative, Inc., 6606 West Broad St., P. O. Box 26234, Richmond, VA, 23260

Please send **\$5.00 rebate** to

Name \_\_\_\_\_  
Address \_\_\_\_\_

## HORSE FEED SPECIALS



Get good-looking cap for only \$1.00 with purchase of 200 lb. of any Southern States Horse Feeds, including Vim-N-Vigor. Get versatile "his or her" vest for only \$4.95 with purchase of 1,000 lb. Top nutrition.

## Cutter Negabot Paste

**\$4.99** 40-gm. syringe  
Reg. sug. pr. \$6.15

Conveniently and effectively removes bots (mouth and stomach stages), ascarids and pinworms. Apply any season to back of tongue. Treats one horse or several foals.



## Aid Dichlorvos Horse Wormer

**\$4.79** 78-gm. pkt.  
Reg. sug. pr. \$6.75

New palatable formula. One feeding, mixed with grain and feed to horses other than foals, controls bots, large and small bloodworms, round worms and pin worms. 19.5% Dichlorvos.



## Aid Motion Lotion

**\$2.99** pt.  
Reg. sug. pr. \$4.75

Fire & ice veterinary preparation. Relieves pain, soreness from exertion or fatigue. Refreshes, soothes. Pleasant scent.



## Sustain III Boluses

**\$10.99** box of 10  
Reg. sug. pr. \$15.75

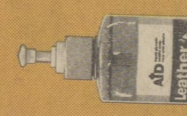
The first "non-prescription" sustained-release Sulfamethazine boluses for beef and non-lactating dairy cattle. Provides therapeutic blood levels for 72 hours after single treatment. Feed one per 200 lb. body weight.



## "Today" Mastitis Treatment

**\$12.49** 12 10-ml syringes  
Reg. sug. pr. \$17.75

Effective immediately following positive test. Each syringe contains 200 mg. of Cephalaprin. Milk with-holding time, 96 hours.



## Aid Leather Renew

**\$2.39** pt.  
Reg. sug. pr. \$3.75

This silicone-base product restores lanning oils to saddles and boots. Cleans, softens, beautifies.



## 5-cc Worm Capsules for Dogs

**\$1.55** pkg. of 6  
Reg. sug. pr. \$2.15

Contains N-Butyl Chloride for removal of hook, round and whip worms. No. 6-61090W.



## Heavyweight Feeding Dish

**\$1.95**  
Reg. sug. pr. \$3.15

Ideal for all caged animals. Unbreakable. Durable high-impact polystyrene plastic. 8-in. diameter x 2 1/2 in. No. 6-30003W.

## Tomlyn Hoof Moisturizer

**\$4.69** 16 oz.  
Reg. sug. pr. \$6.65

New formula. Contains humectants which attract moisture to the hoof. Guards against cracked, dry hooves.



Southern States

Now Thru Sept. 25, 1982

# FALL SALE

Items in this circular are available at most participating Southern States dealers at these sale prices while supplies last and subject to delivery by suppliers as scheduled. "Rain checks" are available if we are temporarily out of stock.

Ask about Southern States CDS Installation Plan, the convenient way to buy quality products today. Or use these bank cards where accepted.



## CHECK THESE DOOR-BUSTING VALUES

### Trash & Grass Bags

**\$3.98** pkg. of 40  
Reg. sug. pr. \$5.75  
Each bag has 20-gal. or 3-bu. capacity, measures 2 ft. 4 in. x 2 ft. 11 in., 2 mil. thick sturdy plastic. One-at-a-time dispensing. Ties included. No. E3-4070.



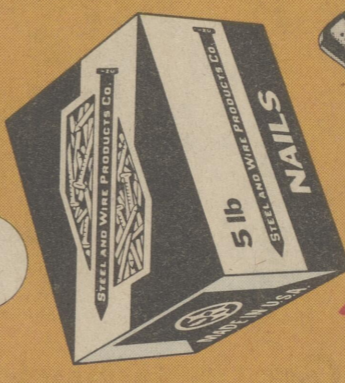
### Light Bulbs

**34¢** each  
Reg. sug. pr. 95¢ each  
60-, 75- and 100-watt size. Stock up now while prices are down on these good-quality, dependable bulbs.



### 5-lb. Box Common Nails

**\$2.49** each  
Reg. sug. pr. \$4.80  
Stock up now on these bright-finished, American-made nails, available here at very attractive savings. They're useful for general construction work and repair. No. 6B.



### Plumb "Ultra-Lite" 16-oz. Hammer

**\$9.95**  
Reg. sug. pr. \$15.50  
This superior tool features tubular nickel-steel chrome-plated handle, perma-bonded to head, with cushion grip. Strong and lightweight. No. 11-474.



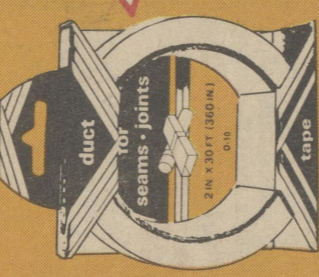
### Super Acrylic Latex White House Paint

**\$14.50** gal.  
Reg. sug. pr. \$19.25  
Our best latex house paint. Gives outstanding results. High hiding power, durability, longevity, dries in 30 minutes; recoatable in 2 hours. No. 301.



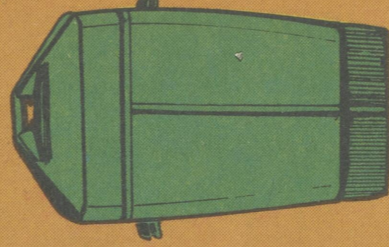
### 60-yd. 2-in. Duct Tape

**\$3.85**  
Reg. sug. pr. \$7.80  
Sturdy aluminum cloth with strong adhesive. Good duct tape is a staple around most farms or homes. Stock up now. B-600.



### 32-gal. Plastic Trash Can

**\$10.80**  
Reg. sug. pr. \$19.25  
Square design means efficient storage. Extra-tough for hard use. Snap-on dome lid is snug-fitting. No. 2585.



### Homelite No. 150-AO 16-in. Chain Saw

**\$179.95**  
Reg. sug. pr. \$269.95  
The gasoline-powered model 150-AO delivers big saw performance without big saw price. Large fuel and oil tanks. 16-inch power tip bar. Automatic oiler. No. 6-84429W.



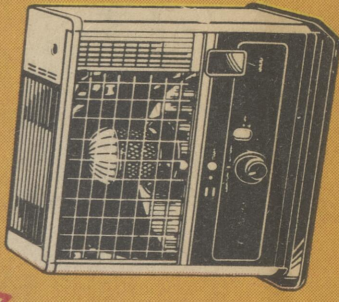
### 5-gal. Kerosene Can

**\$7.35**  
Galvanized and painted 26-gauge steel. Resists leakage and rough use. Flip vent. Flexible spout. No top or side seams. Blue. No. KES-5. (Item may vary slightly in appearance from illustration.)



### Comfort Glow Radiant Kerosene Heater

**\$129.95**  
Reg. sug. pr. \$170.50  
9,300 BTU's per hour. Runs about 16 hours on one filling. Touch 'n Glow electric start. Automatic safety shut-off. Removable cartridge fuel tank. 1.1-gal. capacity. U.L. Listed. No. GRW8A. (Please check your state and local regulations on the use of unvented heaters, before purchasing.)



PECK BROS. FARM SUPPLY CO., INC.  
Harrington, Delaware Phone: 398-3654

Southern States

# FAULT SALE

NOW THRU SEPT. 25, 1982

## Longer-life Barbed Wire

Reg. sug. \$29.25 **\$23.95**

"Motto" brand saves you time, work and money. Its ASTM Class III coating far outlasts the Class I coating or standard 12-gauge barbed wire. Motto has high tensile strength, its lighter weight and no spring-back feature mean easier installation. 4 point, 1 1/2" gauge.



**High-tensile Field Fencing**  
**\$77.00** **\$109.00**

1047-6-14 1/2-ga., 20-rod roll  
 Reg. sug. pr. \$100.00 **\$77.00**

1047-6-12 1/2-ga., 20-rod roll  
 Reg. sug. pr. \$144.00 **\$109.00**  
 "High tensile" means our Motto 14 1/2-gauge is equal in strength to regular 12 1/2-gauge. And you get easier handling and installation along with Class III coating—twice as thick as ordinary fencing for longer life.

## Alurib II Aluminum/Sheets

8-ft. sheet **\$9.49** 10-ft. sheet **\$11.88** 12-ft. sheet **\$14.28**

Reg. sug. pr. \$11.75 Reg. sug. pr. \$14.50 Reg. sug. pr. \$17.50  
 Alurib II pays dividends for years to come in beauty, quality, strength and durability. Overall width, 37 5/8 in. for net 36-in. coverage. Attractive profile. Deep rib strength. Proven lap seal with anti-siphon drain—an improved weatherproof joint. Heat reflective. Durable exterior surface.

## ALURIB



**Steel Panel Gates**  
 12 ft. (No. PG512) **\$37.50**  
 Reg. sug. pr. \$41.75  
 14 ft. (No. PG514) **\$41.00**  
 Reg. sug. pr. \$46.00

These "Swinger" gates provide years of rust-free, sag-free, twist-free service. Pugged welded galvanized construction. 4 feet high.

**100-ft. 1/4-in. Sisal Rope**  
 Reg. sug. pr. \$3.60 **\$2.29**  
 A strong, durable, natural-fiber product. Useful to have on hand for farm, home, camping.

**10-x 12-ft. Heavy-duty**

**Tarp**  
 Reg. sug. pr. \$55.00 **\$42.65**  
 This "Lie-Tuff" tarp is of durable cotton-synthetic blend fabric. Treated for water- and mildew-resistance. Reinforced. Rope in hem.

**30-x 36-x 16-in. Rabbit Hutch**  
 Reg. sug. pr. \$40.85 **\$26.95**  
 Galvanized mesh is durable and rust-resistant. Floor is heavy 16-gauge 1/2" x 1-in. mesh. 6-300035W. (Purchase self-feeder and nest-box separately.)

**Calf-Teria Nipple Pail**  
 Reg. sug. pr. 7.75 **\$6.50**  
 8-qt. capacity. Prevents waste. Galvanized non-rusting. Replaceable nipple assembly. No. 4500.

**CO-OP Portable Farm Heater**  
 New and improved design. Heats up garage or workshop in minutes. 50,000 BTUs. Burns kerosene or No. 1 fuel oil. State and local regulations on the use of unvented heaters. Before purchasing!

Reg. sug. pr. \$225.00 **\$199.95**

**Cattle Feed Bunk**  
 Here's low cost combined with durability and portability. 11 feet long. Polyethylene liner is unaffected by weather, salt, feed ingredients. No. 12-2200.

Reg. sug. pr. \$153.00 **\$126.00**

**Universal Hay Feeder**  
 Reg. sug. pr. \$137.00 **\$113.00**  
 Efficient new design for round bales. Pin & socket assembly for easy take-down. Comes in just three pieces. 18-in. spacings. No. 12-2058.

Reg. sug. pr. \$63.50 **\$52.80**

**Electric Fence Posts**  
 Reg. sug. pr. \$32.00 **\$27.25**  
 Round rod-type steel posts. Full 3/8-in. diameter. 2 insulators anchor plate. Strong and serviceable. No. 414-2W-54.

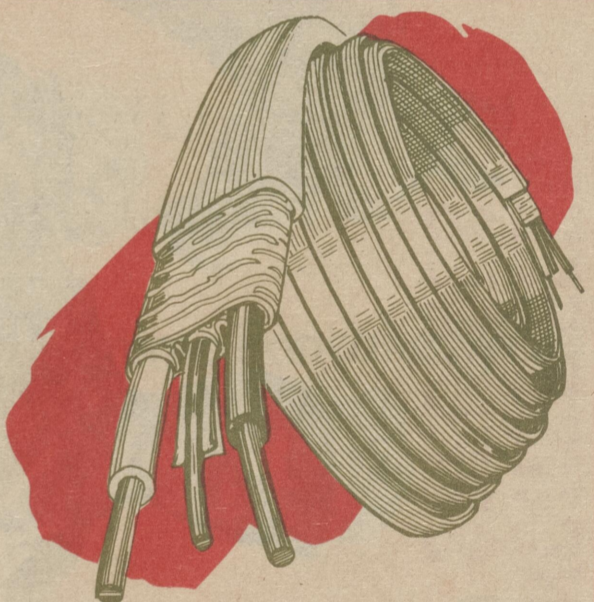
Reg. sug. pr. \$3.25 **\$2.98**

**6 1/2-ft. Steel Fence Posts**  
 Reg. sug. pr. \$3.25 **\$2.98**  
 Strong, attractive, durable. Heavy stud configuration is made from high-strength rail steel and coated to last. Years longer than ordinary posts. Clips included.

## ELECTRICAL WIRE

100 ft. **\$12.60** 250 ft. **\$26.45**

Reg. sug. pr. \$17.25 Reg. sug. pr. \$36.50  
 This is 12-2 type non-metallic (NM) sheathed cable with ground. It meets ASTM, L Federal and Natl. Electric Code standards for certain residential applications.



**AMES** SINCE 1774  
 a McDonough company

**Long-handle Shovel**  
 Reg. sug. pr. \$12.55 **\$8.55**

**AMES Flexible Steel Leaf Rake**  
 Reg. sug. pr. \$8.15 **\$5.35**  
 22 spring steel tines do a thorough raking job. 48-inch wood handle. No. 19-361

**AMES Steel Garden Rake**  
 Reg. sug. pr. \$17.00 **\$12.25**  
 Here's rugged quality for hard work and vigorous use. 5-ft. hardwood handle. No. 18-813

**AMES Aluminum Grain Scoop**  
 Reg. sug. pr. \$24.85 **\$18.95**  
 10-gauge aluminum alloy. Size 12, 15 1/2 x 15-in. blade. Non-sparking. Ash handle. No. 16-712.

**Bamboo Lawn Rake**  
 Reg. sug. pr. \$6.45 **\$4.50**  
 Flexible, lightweight, long-wearing. 30-in. spread. Metal spreader positions each tooth evenly.

**Galvanized Chimneycap**  
 Reg. sug. pr. \$29.95 **\$21.95**  
 Prevents rain from entering chimney and causing rust. Fast do-it-yourself installation. Heavy gauge galvanized iron. 13 x 13 in. No. 6-20742W.

**Round Chimney Brush**  
 Reg. sug. pr. \$13.20 **\$9.39**  
 This all-steel Worcester brush keeps your chimney clean and energy-efficient. 22-gauge wire is twisted into a proven configuration. 8 in. No. 102-8. Code No. 059-01525.

**Square Chimney Brush**  
 Reg. sug. pr. \$18.80 **\$13.39**  
 Does an excellent job cleaning chimney flues of soot and creosote deposits. 22-gauge twisted wire. All-steel capability. 8 x 8 in. Worcester. No. 103-88. Code No. 059-01527.

**21-in. Heavy-duty Dog Collar**  
 Reg. sug. pr. \$3.70 **\$2.10**  
 A rugged, long-wearing collar or harness leather, natural color. 1 in. wide. No. 6-60215W.

**Enclosed Cat Pan**  
 Removable top stops litter spills and contains odors. Disposable plastic liners. High impact polypropylene. No. 6-60455W.

**Dog Self-feeder**  
 Reg. sug. pr. \$23.95 **\$23.95**  
 Rain or shine, pet eats what and when he likes. Quality galvanized steel. Hinged to keep feed dry. 22 x 12 1/2 x 10 1/2 in. Feed capacity of 25 lb. No. 6-60090W.

**Houseplant Fertilizer Spikes**  
 Reg. sug. pr. 98¢ **59¢** pkg. of 5  
 Convenient, compact way to feed indoor plants—keep them healthy and vigorous. Proven plant food formulation.

**Leather Weatherproofer**  
 Reg. sug. pr. \$1.55 **79¢**  
 "Snow Proof" provides leather of all kinds with all-weather protection. Leaves it in its natural condition. Water-repels. 9 oz. No. 6-58920W.

**Thermometer for Wood & Coal Stoves**  
 Reg. sug. pr. \$7.50 **\$7.50**  
 Monitors stove performance. Indicates overheating or inefficient operation. No. 6-62500W.

**Garage or Barn Broom**  
 Reg. sug. pr. \$9.35 **\$7.30**  
 Sweeps an 18-in. swath. 3-7/8-in. Palmira bristles in block with two holes to distribute wear. Handle included. No. 25-2419.

**Precision Chain Saw Sharpener**  
 Reg. sug. pr. \$16.95 **\$12.95**  
 File-N-Joint keeps chains sharp. Doubles chain life. Chains in place on saw bar, no need to remove chain from bar. No. 6-80975W.

**3 1/2-lb. Bent-handle Axe**  
 Reg. sug. pr. \$17.25 **\$12.95**  
 A serviceable, well-balanced American-made axe. Quality steel is ground, tempered, polished. Sharpended. Hardwood handle. No. 35JR36C.

**Thorsen Fence Pliers**  
 Reg. sug. pr. \$7.35 **\$7.35**  
 Drop-forged high-polished head. Very grip. Capable of pulling, hammering, stable remover. Jug lifter, wire splicer, stretcher, cutter. No. FE10.

## Electrical Wall Outlet

Reg. sug. pr. \$1.25 **68¢**

15 amp. 120 volt. Constitutes a grounded wall outlet. Brown color. Break-off fins. No. 100-5320-SP.



## Electrical Wall Switch

Reg. sug. pr. \$1.80 **90¢**

Noiseless. Single-pole. Grounded. 15 amp. 120 volt. Brown color. Break-off plaster ears. No. 103-1451-2SP.



## Infrared Heat Lamp

Reg. sug. pr. \$2.90 **\$1.66**

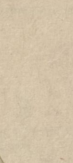
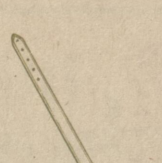
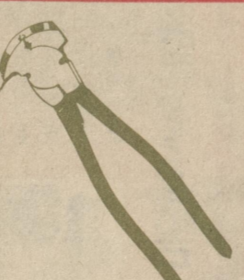
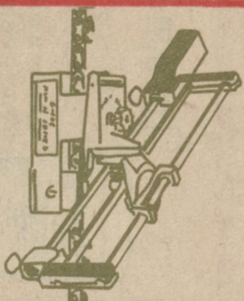
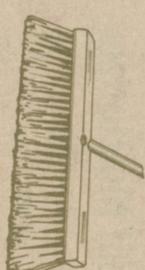
General Electric's "Warm Up" gives you instant heat when and where you want it. No. 250/R40-1



## 150-watt Floodlamp

Reg. sug. pr. \$7.05 **\$3.49**

Here's what you need for decorative lighting, backyard illumination or home security. Dependable, weather-resistant, long-burning product from General Electric. No. 150 PAR/FL



Southern States

# SALE

NOW THRU SEPT. 25, 1982

### Asphalt Aluminum Coating

Reg. sug. pr. \$37.00  
**\$30.25** 5 gal.  
 This liquid/asphalt product protects composition, metal and concrete surfaces. Coverage is 75 to 150 sq. ft. per gallon. No. 61.

### Fibrated Asphalt Roof Coating

Reg. sug. pr. \$14.00  
**\$12.35** 5 gal.  
 Just brush on to add new life to weathered roofs. Does not run. Covers 75-100 sq. ft. per gallon. No. 41.

### Adjustable Hacksaw

Reg. sug. pr. \$11.40  
**\$7.25**  
 A quality tool with polished nickel frame that's corrosion-proof. Adjustable for 10- and 12-inch blades. Two 10-in. blades included. No. 10.

### 8-pt. Nicholson Hand Saw

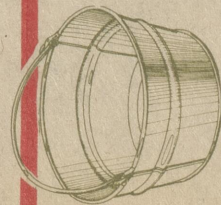
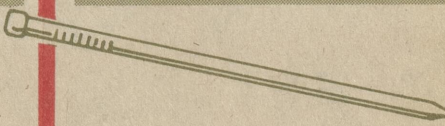
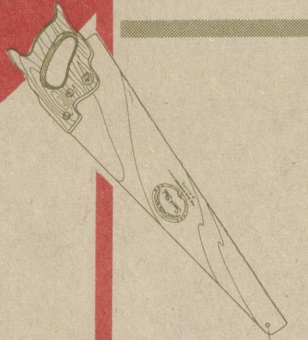
Reg. sug. pr. \$15.25  
**\$9.60**  
 This quality 26-in. saw is made of special steel, flat ground, set and straightened. No. 150.

### 1-lb. Box Finishing Nails

Reg. sug. pr. \$1.15  
**64¢**  
 Good quality at a savings of more than 40%. Buy them now; have them when you need them. Bright-finished, American-made. No. 6D.

### 3 3/4-gal. Galvanized Scrub Tub

Reg. sug. pr. \$5.75  
**\$3.80**  
 This long-life tub is made of heavy-duty galvanized sheet steel for superior rust protection. No. 44.



### Standard Red Barn Paint

Reg. sug. pr. \$24.00  
**\$21.50** 2-gal. can  
 This fine oil-base paint contains more wood-perserving iron oxide than many comparably-priced paints. Covers well, wears for a long time and resists mildew. No. 402.



### Acrylic Latex Interior Wall Finish

Reg. sug. pr. \$14.50  
**\$10.95** gal.



### Green Barn & Roof Paint

Reg. sug. pr. \$18.75  
**\$12.95** gal.



### Bil-Dry Waterproof Cement Coating

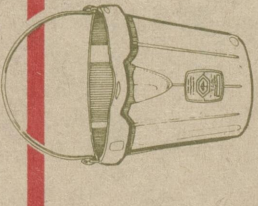
Reg. sug. pr. \$12.00  
**\$7.89** 25 lb.



Beautiful pastel colors. Acrylic content means superior durability, scrubability, soil resistance. Easy clean-up of brushes, rollers. No. 1411.

Gives excellent results over primed metal or previously-painted wood. Its advantages are easy brushing, durability, fade resistance and no lead pigments. Oil-base. No. 414.

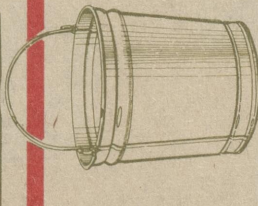
Waterproofs basement walls and all types of concrete masonry surfaces. A heavy-duty, textured coating. Use interior or exterior, above or below grade.



### Crush-proof 10-qt. Pail

Reg. sug. pr. \$6.25  
**\$4.65**

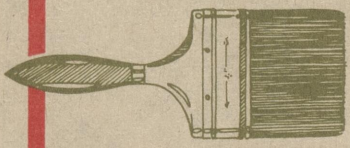
Reinforced rubber-fiber withstands tramping, driving over, acids. Won't crack, dent, leak. Get this rugged Fortex product. No. N200.



### 10-qt. Galvanized Pail

Reg. sug. pr. \$4.25  
**\$2.75**

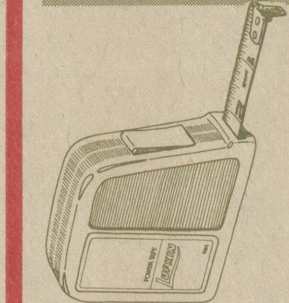
Made for rough use. Galvanized for rust resistance. Strong, specially-designed ball attachments. No. 41011.



### 4-in. Nylon Paint Brush

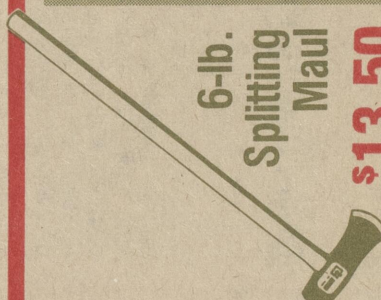
Reg. sug. pr. \$7.25  
**\$4.75**

Especially recommended for water-based paints (latex, acrylic, etc.) Black tapered bristles. No. 2040.



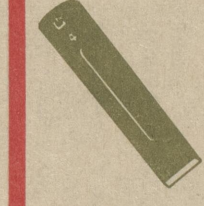
### Lufkin 16-ft. Steel Tape

Reg. sug. pr. \$9.90  
**\$6.25**  
 Durable styrene case. 16-ft. x 3/4-in. steel ribbon with easy-to-read numerals. No. 8316.



### 6-lb. Splitting Maul

Reg. sug. pr. \$16.15  
**\$13.50**  
 Here's what you need for easy splitting and fuel economy. It's American-made of high-grade steel, tempered and hardened. 36-in. handle. No. 60M.



### 4-lb. Splitting Wedge

Reg. sug. pr. \$6.75  
**\$4.95**  
 American-made of quality steel, this square-head wedge is designed for fast, efficient splitting. No. 4W.



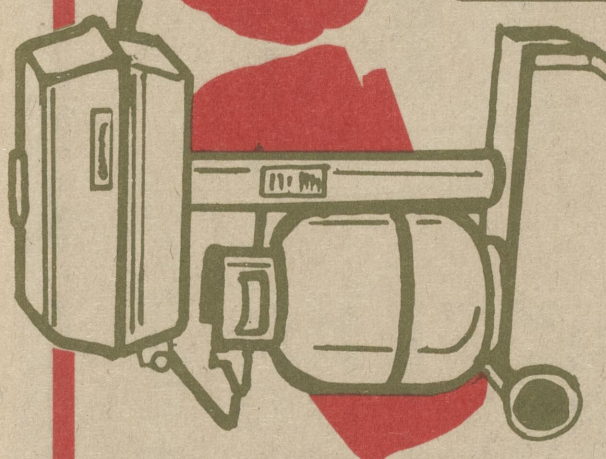
### 8-lb. Sledge Hammer

Reg. sug. pr. \$20.50  
**\$15.50**  
 Dependable American-made tool. Head measures 6 1/2 in., handle 38 in., face 2 1/2 in. A real aid in energy independence. No. 80DF.

### Gas Chef Portable Gas Grill—with cart

Special purchase—**\$115.95**  
 quantities limited.

All-weather die-cast aluminum. 217-sq. in. cooking area. Permanent lava rock. 11,000 Btu stainless steel burner. 20-lb. cylinder included. Electric igniter. No. AG-11217-P. Rain check deliveries will not be made until after the sale ends.



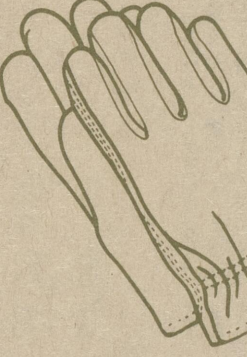
### CO-OP Laundry Detergent

Reg. sug. pr. \$12.90  
**\$10.95** 20 lb.  
 This non-phosphate, low-sudsing product gets clothes sparkling clean in all types of washers. Stock up now.



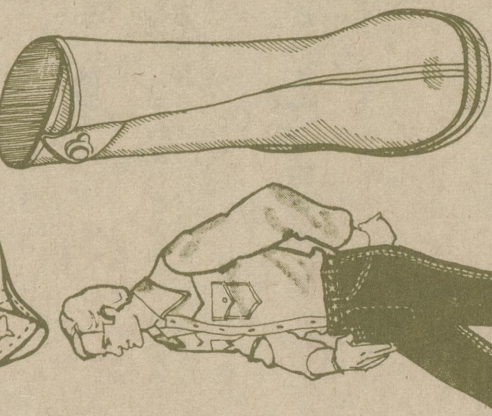
### Wells Lamont Suede Gloves

Reg. sug. pr. \$10.95  
**\$7.69**  
 Custom-tanned ranch suede. Warm full pile lining. Ideal for sport, work, leisure. Double stitched wrist. Gum cut. Thumb shield. No. 1086.



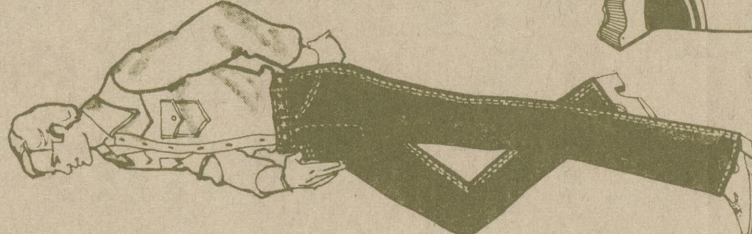
### Molded Waterproof Rubber Boots

Reg. sug. pr. \$10.95  
**\$11.79** pr.  
 These 10-in. Tingley boots keep your feet dry and slip on and off easily. Washable. Unlined. Available in popular regular sizes at participating stores. No. 1400.



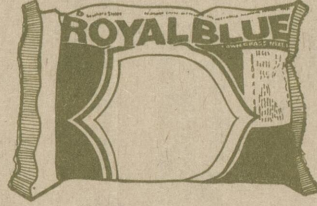
### Saddle King Men's Jeans

These well-made jeans are of 14-oz. 100% cotton blue denim. They're good-looking and comfortable. Boot-jean style. Regular popular waist sizes and lengths at participating stores. This special price does not include "Big Man" sizes.



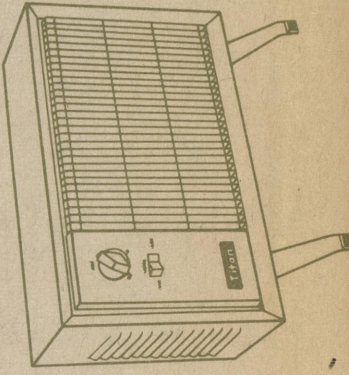
### SAVE 10% ON LAWN SEED

All Southern States Lawn Seed Mixtures are reduced in price for the sale. Dura-Green, Velva-Green, Shadee, Royal Blue and Duchess. Grow great grass and save some cash.



### Deluxe Portable Electric Heater

Reg. sug. pr. \$43.50  
**\$34.95**  
 Fan-forced instant heat. Dual wattage selector. Glowing ribbon elements. Therm-O-Dial thermostat. Automatic control. Beautiful wood-tone styling. No. RT26B.



### Tall Kitchen Can Bags

Reg. sug. pr. \$3.25  
**\$1.98** pkg. of 30

Bags fit up to a 13-gal. trash can. Measure 2 ft. x 2 ft. 6 in. x 1.1 mil. thick. Odor-free. One-at-a-time dispensing. Ties included. No. E3-3044.



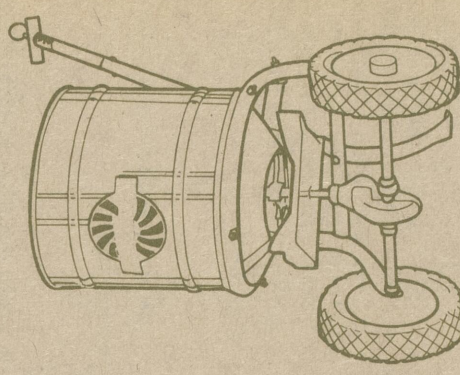
### d-Con Rat Bait Pellets

Reg. sug. pr. \$9.90  
**\$7.35** 4 lb.  
 This ready-mixed, ready-to-use product gets lethal results. Contains proven Warfarin mixed with bait. No. 261.



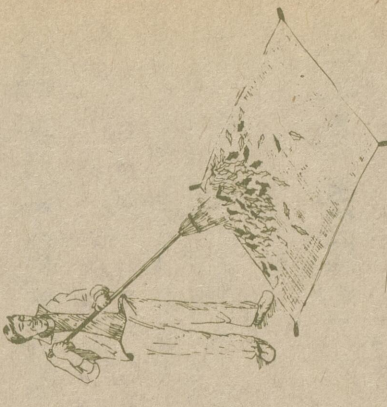
### 'Whirl-On' Broadcast Spreader

Reg. sug. pr. \$37.50  
**\$32.50**  
 Precision die-cast gears. Zinc-coated steel hopper. Stainless steel feed guides. Spreads quickly, efficiently. Model 33.



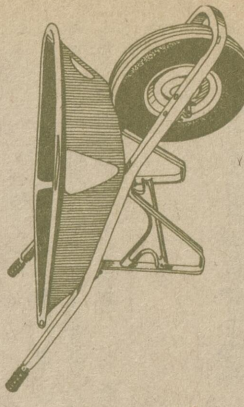
### 8-x 8-ft. Burlap Tote

Reg. sug. pr. \$10.95  
**\$6.95**  
 Handy for carrying leaves, clippings, lawn/garden trash. Heavy burlap is hemmed, has webbed corner handles. No. 2572.



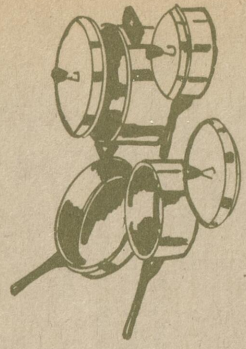
### Cadet '78' Wheelbarrow

Reg. sug. pr. \$57.00  
**\$47.00**  
 Big 4-cu. ft. capacity. Sturdy construction. Interlocking leg brace.



### 7-pc. Aluminum Cookware Set

Reg. sug. pr. \$36.95  
**\$29.95**  
 You get 1-qt. saucepan with cover, 2-qt. saucepan with cover, 10-in. fry pan, 5-qt. Dutch oven with cover (which also fits fry pan). Silverstone interiors mean no-stick cooking. No. 6-23666W.



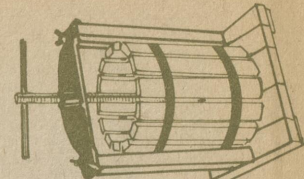
### Steady-Gro Lawn Fertilizer

Reg. sug. pr. \$7.50  
**\$5.50**  
 18-lb. bag covers 5,000 sq. ft. 26-4-6 analysis. Slow-release Nitrogen for steady feeding. Grows great grass.



### 8-qt. Fruit Press

Reg. sug. pr. \$67.95  
**\$52.45**  
 Sturdily constructed of solid oak wood, finished naturally, with cast-iron bar and hoops. Easily disassembles for cleaning. No. 6-65477W.



Southern States

# FAIR SALE

NOW THRU SEPT. 25, 1982

## Grip-Spur Farm Truck Tires

**\$59.40\*** plus \$3.14 FET  
7.00 x 15 6-ply Load Range C

**\$73.50\*** plus \$3.97 FET  
7.50 x 16 8-ply Load Range D

Designed for rough farm trucking operations with a normal amount of highway operation. Deep penetrating tread. Resistance against side slippage. Extra carcass strength. Resistance to impact injuries. Nylon cord. Tube-type construction.



## Extra Heavy-duty Batteries

Extra starts, extra dependability, extra capacity. Rugged polypropylene withstands rough use. Modern gassing vent plugs eliminate the need for glass separators. Start with performance, end up with savings. Price plus trade-in.

6 volt No. EHD-1	12 volt No. EHD-22F	12 volt No. EHD-24
<b>\$42.95</b>	<b>\$41.50</b>	<b>\$45.95</b>
Reg. sug. pr. \$54.50 Fits many tractors and other equipment requiring 6 volts.	Reg. sug. pr. \$52.50 Fits many Fords and Mercurys.	Reg. sug. pr. \$67.75 Fits many GM, Chrysler models.

## Redi-Grip Snow & Mud Tires

As low as **\$37.50\*** plus \$2.21 FET

Size	Sale	FET
F78-14	<b>\$39.15*</b>	plus \$2.34
G78-14	<b>\$41.00*</b>	plus \$2.50
G78-15	<b>\$41.15*</b>	plus \$2.27
H78-15	<b>\$44.70*</b>	plus \$2.82

\*These special Cash-N-Carry prices are available during the sale at participating dealers only, and all sizes may not be available at every dealer. A short delivery delay may be experienced for some sizes. Mounting, balancing, credit and other services are available at many dealers at additional cost. Check with your local dealer for specific details.

Dig in and go through mud, slush and snow, without a howl! Extra-wide, extra-deep tread. Self-cleaning lugs. Quiet running on dry pavements. Special compounding and 4-ply construction mean long mileage. White-walls.

## SHD Heavy-duty Motor Oil

**\$1.07** qt. **\$12.85** case of 12

This quality lubricant provides outstanding engine protection. Exceeds manufacturers' specifications for cars and light trucks. SAE 30.

## 10W-40 Motor Oil

**\$1.12** qt. **\$13.48** case of 12

Our Super 12M multi-grade oil is heat-proof, cold-proof and high in detergency. Exceeds manufacturers' specifications for cars and light trucks.

## All-purpose Motor Oil

**\$22.59** 5 gal.

Our Super III, single-grade, is your one oil for trucks, tractors, farm equipment or diesel engines. Meets or exceeds manufacturers' specifications. SAE 30.

## Multi-purpose Grease

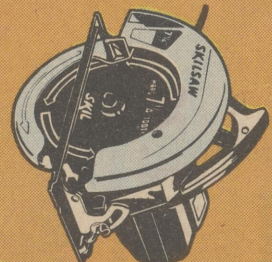
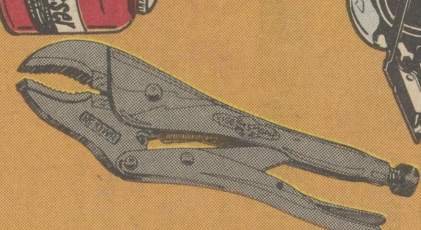
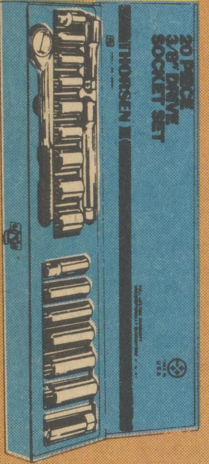
**96¢** tube **\$28.75** case of 30

Our B-660, high-performance multi-purpose grease, handles a variety of lubrication jobs around farm and home.

## Thorsen 20-pc. 3/8-in. Drive Socket Set

**\$37.65**

Reg. sug. pr. \$56.00  
You get reversible ratchet, 2 extensions, 9 regular sockets, 6 deep sockets, 1 spark plug socket, in metal box. Ideal for auto and engine repair. No. 3814.



## Ski 7 1/4-in. Saw

**\$44.99**

Reg. sug. pr. \$74.99  
Big cutting capacity. Burnout protection. 4600 RPM, 1 1/2-h.p., 10-amp. motor. Safety switch, safety guard. Helical gears. No. 6-15056W.

## 10-in. Vise-grip Pliers

**\$6.45**

Reg. sug. pr. \$9.50  
The genuine article. Holds with a terrific grip. Adjusts and releases quickly. Also cuts wires. No. 10WFR.

## 2 1/2-gal. Gasoline Can

**\$5.95**

Galvanized and painted. 26-gauge steel. Resists leakage and rough use. Flip vent. Flexible spout. No top or side seams. Fed. No. SP-2 1/2. (Item may vary slightly in appearance from illustration.)

## 1/2-in. Wren Drill

**\$49.95**

(Variable speed, reversible)  
Reg. sug. pr. \$61.35  
This quality tool is double-insulated. Has unitized construction. Welded, burnout-proof motor. Speed lock switch (forward and reverse). No. 6-15977W.

## 10-amp. Battery Charger

**\$41.95**

Reg. sug. pr. \$55.45  
This heavy-duty unit charges both 6- and 12-volt batteries. Tapers to near zero when battery becomes fully charged, but continues to supply enough current to maintain full charge. No. 6-10400W.

## 8-ton Hydraulic Jack

**\$77.75**

Reg. sug. pr. \$93.35  
Quality-made by Hein-Werner for strength and dependability. Handles heavier trucks and buses easily and safely. Heavy base and top nut. No. 6-12506W.

## Sta-Rite VIP III Submersible Pumps\*

1/2 hp for shallow & mid-depth wells  
(No. 8P4C02S-06S)  
Reg. sug. pr. \$298.00 **\$249.00**

1/2 hp for mid-depth & deep wells  
(No. 4P4C02S-06S)  
Reg. sug. pr. \$375.00 **\$313.00**

These rugged pumps give you the corrosion resistance of stainless steel, with real protection against lightning. Efficient discharge connection, precision impellers and diffusers, many other high performance features. Ask about 5-year warranty.



## Submersible Pump Control Box\*

Reg. sug. pr. \$64.00 **\$45.00**

Use this Sta-Rite unit with the 1/2-hp submersible pumps shown on this page. Provides maximum starting and running torque. Non-sacrificial arrestor protects against lightning.

## Controlled-air Water Tanks\*

42-gal. capacity equivalent (No. CA42)  
Reg. sug. pr. \$137.00 **\$99.50**

82-gal. capacity equivalent (No. CA82)  
Reg. sug. pr. \$209.00 **\$138.00**

These corrosion-resistant tanks come pre-charged with air. Waterlogging is eliminated. They have seamless vinyl air-water separators.

## Sta-Rite 3/4-hp Convertible Thermoplastic Jet Pump\*

Reg. sug. pr. \$250.00 **\$219.00**

A high-capacity model that combines strength with resistance to corrosion and abrasive wear. Heavy-duty ball bearings, balanced rotor, precision molded diffuser. No. PLD.

## Energy-saver 3/4-hp Convertible Jet Pump\*

Reg. sug. pr. \$244.00 **\$195.00**

New generation jet pump! This Statesman model has exclusive energy-saving capacitor-run motor with sealed ball-bearings for long life. Superior pumping capability with high pressure for shallow or deep wells to 100-ft. depth. No. LDSS.

## Statesman 1/2-hp Shallow-Well Jet Pump\*

Reg. sug. pr. \$156.00 **\$123.00**

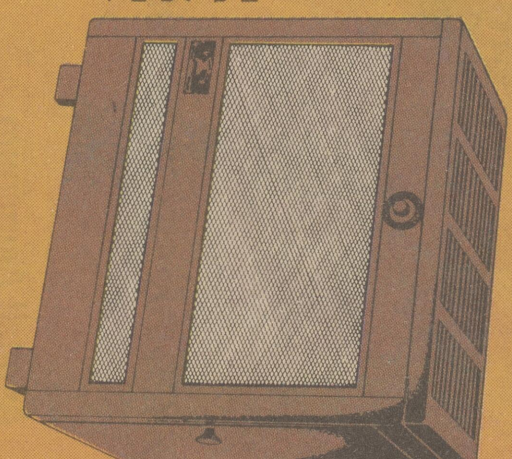
This high-pressure model features self-priming, heavy-duty ball bearings, precision molded diffuser. May also be used as a pressure-boosting pump. No. NCSS-26.

## Birmingham "Knight" Wood-burning Heater\*\*

**\$349.95**

Here's an energy-efficient model that really keeps you warm. It has a ceramic firebrick-lined firebox, lowered top that helps project warm air into the room, and a good-looking newly-designed cabinet front. U.L. Listed. No. 624-UB.

\*\*Available only at Southern States Heater dealers.



## Super-Flex Plastic Pipe

100 ft., 3/4 in., 100-lb. test  
Reg. sug. pr. \$14.25 **\$10.45**

100 ft., 1 in., 100-lb. test  
Reg. sug. pr. \$21.00 **\$15.95**

300 ft., 1 in., 160-lb. test  
Reg. sug. pr. \$105.00 **\$78.98**

Extra strength and resistance to cracking at low temperatures. NSF-approved for drinking water.

## Sta-Rite Sediment Filter

Reg. sug. pr. \$29.99 **\$17.98**

Removes suspended particles of sand, dirt, rust, other sediment. Compact, easy to install. See through for inspection. No. 325.

## Energy-Saver-Plus Water Heaters

30 gal. Natural Gas  
Reg. sug. pr. \$172.00 **\$142.00**  
(No. GV-F-333S)

30 gal. LP Gas  
Reg. sug. pr. \$199.00 **\$163.00**  
(No. GV-F-333S)

40 gal. Electric  
Reg. sug. pr. \$178.00 **\$144.00**  
(No. EFR-42D)

Double density foam insulation means they almost pay for themselves in energy saved over the life of the unit. Glass lining. Convenient, long-shank threaded drain valve. Durable, attractive baked enamel finish.

## 20.1-cu. ft. Chest Freezer

Reg. sug. pr. \$495.00 **\$433.00**

This energy-efficient unit offers many standard features: Bonded freeze construction, minimum temperature fluctuation, counter-blended lid, light-sealing gasket, sliding baskets, textured door and body, signal light, front drain, key lock and many more. No. C-20.

## 16.9-cu. ft. Vertical Freezer

Reg. sug. pr. \$505.00 **\$442.00**

This energy-efficient upright offers a number of wanted advantages: Textured steel door and body, thick wall insulation, capillary system of refrigerant control, refrigerated shelves, bulk storage gate, elect-a-key security lock, and many more. No. DF-17.

