

Peoples Bank names two to Bank Board



William Vanderwende



John M. [Jack] Short

by Harry G. Farrow, Jr.
HARRINGTON. The Peoples Bank of Harrington founded in 1905 to serve the community has named two members of the Board of Directors: William Vanderwende of near Bridgeville and John M. (Jack) Short of Harrington.

This brings the number of Directors to 8. Deaths of Howard Wagner and George Simpson had reduced the Board to 6 members.

Vanderwende, a native of rural Harrington, is a graduate of Harrington High School Class of '51. He operates a dairy farm on Route 404 near Bridgeville with his three sons. They also till approximately 3,000 acres of a grain operation.

He currently serves in several civic organizations and Boards of Directors.

The Boards on which he serves are Southern States Cooperative which meets every other month in Richmond, Va. and the Board of Directors of the Delaware State Fair. He is also Superintendent of the Cattle Division at the Fair.

Vanderwende also serves as President of the Delaware Soil Conservation Districts of Delaware.

He has been a member of the Woodbridge School Board for the past 10 years. His term there expires in July. He says he will not seek another term on the School Board.

He is married to the former Ellen Ann Draper of near Harrington. They have four children Daniel, Doug, Jim, all of whom are in the farming operation with him, and one daughter, Carla, who lives on the Eastern Shore of

Virginia.

Short known to all as "Jack" has lived in the area all of his life. He currently serves on the Board of Directors of the Delaware State Fair and the Board of Directors of the State Ag Museum in Dover. He is also a member of the executive committee there.

He is Superintendent of the Antique Machinery Division of the Delaware State Fair.

Short recently retired after 30 years of service with the State Highway Department...now called Department of Highways and Transportation. He was Maintenance Superintendent for all of Kent County and part of New Castle County.

He serves in numerous civic organizations and antique machinery organizations.

He and his wife Bessy live on the outskirts of Harrington. They have two married children...one son and one daughter.

The Peoples Bank of Harrington has assets of 29 million dollars and employs 20.

Other members of the Board of Directors are J. Edward Taylor, President; Charles Peck, 1st V.P.; William Paskey, 2nd V.P.; Walter Messick; Calvert Morgan, Secretary to the Board; and Thurman Adams, Sr. Officers of the Bank include Robert E. Everline, Cashier; Pat B. Kohut, Assistant Cashier Head Loan Officer; and payroll clerk; Barry Breeding, Assistant Cashier in charge of Book-keeping and Computer; and Frances Garey, also Assistant Cashier.



Seventieth Year, No. 39, March 20, 1985 Published Every Wednesday at Harrington, Delaware Twenty-Five Cents Per Copy

Short Takes on Area News

Carper goes to the aid of boaters and fishermen

U.S. Congressman, Tom Carper of Delaware last week called on the President to put back in the budget funds for the Wallop/Breaux fund, which was designed for boating safety programs, fisheries conservation, and boating ramps. "All of these services are near and dear to the hearts of recreational fishermen and boaters," said Carper.

Carper went on to add that to take away that which was promised to "...these people," makes a mockery of the proposal.

Delaware is scheduled to receive close to one million dollars under the Wallop/Breaux Act. "Our fishermen and boaters paid into the fund with the understanding that recreational opportunities would be maintained and enhanced," said Carper.

State School Supervisor retires

Richard L. Connell has retired as state supervisor of programs for exceptional children. Mr. Connell, a member of the State Department of Public Instruction since 1967, coordinated federally funded programs for children with physical, mental, or emotional handicaps that have advanced Delaware to the forefront of the states.

He helped to develop intensive learning centers for seriously disturbed children who previously had attended costly facilities out of state. He arranged for the purchase of computer terminals to help handicapped students learn basic skills, and that statewide network was the basis of the current Computer Education Services in which Delaware ranks as a national leader.

A graduate of Albright College, Reading, Pennsylvania, Mr. Connell earned his master's in guidance at the University of Delaware.

He began teaching in Greenwood in 1952 and later worked at the Delaware City School and as guidance counselor at Dover Air Base High School.

Messick attending 4-H Leadership Program

CHEVY CHASE, Md. — Ruth Ann Messick, an adult volunteer 4-H leader from Farmington area has been selected from more than 620,000 eligible adults to participate in a national training program called Salute to Excellence.

Salute to Excellence will be held March 16-23, 1985, at the National 4-H Center here. The program teaches management and communications skills to adults who volunteer in the 4-H club system. One volunteer is chosen from each state to attend the week-long program and receive a \$1,000 grant to implement a plan to improve volunteerism in your state.

The Salute to Excellence program is underwritten by a grant from R. J. Reynolds Industries, Inc.

Delaware Music School to hold Recital

The Delaware Music School on Sunday, March 31, will hold the school's annual faculty recital.

Highlights of the recital program include master faculty member Amy Rosser of the Peabody Conservatory at the harpsichord; Pachelbel's Canon performed by pianist Georgiana Wall and violinists Michelle Peters, Mimi Abbott and Paula Crowe; and saxophone and classical guitar solos by William Bennett and Steven Lester.

The recital will also introduce two new Delaware Music School faculty members. Rebecca Hale, a graduate of the Wheaton College Conservatory of Music and recent soloist with the Baltimore Symphony and Salisbury Choral Society's production of *The Messiah* joins the school's voice faculty this spring and will sing an aria from Mozart's *The Marriage of Figaro*. Amy Forslund, a graduate of Ohio University and member of Wesley College's music department, will join the school's Dover branch this fall as woodwind instructor. She will perform on the oboe, accompanied by harpsichordist Amy Rosser.

The recital will begin at 2:00 p.m. in the Avenue United Methodist Church, Milford. A reception will follow.

On Saturday, March 30, at 2:00 in the Avenue Church, Amy Rosser will give a harpsichord workshop for anyone interested in learning about this elegant baroque instrument and sounding it out for themselves! Both the recital and workshop are free and open to the public. For more information, contact the Delaware Music School at 422-2043.

Soil Conservation conducting surveys

The U.S. Soil Conservation Service (S.C.S.) and the Delaware Division of Soil and Water Conservation are conducting field investigations and engineering surveys in the Hartly and Blackiston areas of Kent County according to Frederick T. Mott, S.C.S. District Conservationist. This work is in conjunction with a supplemental Environmental Impact Statement for the Upper Chester River Watershed Agricultural Drainage Project. The project involves the restoration of Agricultural drainage ditches. The Soil Conservation Service and the Delaware Division of Soil and Water Conservation agreed to do the additional work at the request of a coalition of environmental groups. A public hearing was held last November. The field investigation work is scheduled to continue throughout this Spring and Summer.

Claymont resident to represent Delaware in North Carolina

Marcy J. Wheeler of Claymont will represent Delaware at the 36th National Chicken Cooking Contest on May 16 at the Grove Park Inn in Asheville, North Carolina.

(Continued on page 2)

Mrs. Plummer celebrates 90th Birthday

by Harry G. Farrow, Jr.
HARRINGTON. She was 90 on Friday, and she said "...it has been the nicest birthday that I have ever had...I think."

Friends and well wishers came by to pay their respects to Mrs. Hattie Plummer on Friday. Mrs. Jean Harrington and Mrs. Nancy Green, representatives of the Harrington Fire Company Ladies Auxillary made a special visit to Mrs. Plummer's home on Ward Street. Mrs. Plummer is the oldest living member of the Harrington Fire Company Ladies Auxillary. She has been a member for 50 years.

Mrs. Plummer has lived in Harrington since 1928. She was raised on a farm near Farmington. Her maiden name was Lecompte.

She loved going to school. "I never missed a day of school...except one. That was the day they buried my

grandfather. I attended his funeral... and missed school that day," she said.

The first school Mrs. Plummer attended was called Coon's Den...near Farmington. "I went there through the 8th grade...then came back to Farmington and graduated from the Farmington school."

Mrs. Plummer worked in the Harrington Shirt factory for 24 years. She was also employed for 9 years at the Governor Bacon Health Center at Newport. "I lived there and ran a cottage...that's what they called it then...for children." This was after her husband died. He had been a sawyer for Murphy & Hayes during his years of employment. They had one son who died at the age of 2.

Mrs. Plummer is a kind, gentle person who shows signs still of good health. Let's hope that she has many more pleasant years ahead of her.



Mrs. Jean Harrington, left, and Mrs. Nancy Green honored Mrs. Hattie Plummer on Friday. Mrs. Plummer was 90 on Friday, and she is also the oldest member of the Harrington Fire Company Ladies Auxillary. Mrs. Harrington and Mrs. Green were representatives of the Auxillary. Photo by HGF.

Tri-Centennial View of Harrington

The slide presentation of Harrington's History was rated as a success by most of its participants on Sunday. The program was a joint effort between the Dover friends of the Library and the Greater Harrington Historical Society. Mrs. Sue Jamison and Mr. Ken McKnatt represented each organization and shared equally in the narration.

The history book and slide program was not meant to be a complete history of Harrington but rather to show Harrington's relationship to the Development of Kent County, DE. The Tri-Centennial Views booklets are part of a celebration of the 300th anniversary of Kent County. Harrington was the 5th of the series, with Dover completing it this fall.

Sunday, March 17, at 3:00 p.m., interested persons gathered at Asbury Methodist Church for a look backwards into time. The Historical Society set up three banquet tables full of memorabilia. There was also a mannequin complete with Harry Farrow Sr.'s conductor P.R.R. uniform. The stage at the front of the auditorium was a display area for such items as a basket from Franklin Bros. Basket Factory, a couple of Jehu Camper's miniature

woodworking scenes, an old counterpane, and pictures of some of the oldest houses in town. Mr. Marvin Smith, a former Harrington resident, set up a nice display containing railroad items and other things. A velvet cape which had belonged to Mrs. Weiner (for whom Weiner Ave. is named) was also displayed.

The refreshments were punch and home-made cookies. The refreshment table was of a St. Patrick's theme with two lovely flower arrangements by Nancy's Country Flowers. The cookies carried out the theme with some of them having mint jelly and some being mint green cremes puffs, as well as other flavors.

A few people came forward with ideas for additional history information which will be used in the larger and more complete book which the Society is presently compiling. The third Thursday of each month the Society meets at 7:30 p.m. at the Senior Center in the hopes to complete this important task.

The Tri-Centennial View presentation was meant to stir memories, activate minds and people to help with this endeavor.

Swim Team celebrates season with banquet

by Harry G. Farrow, Jr.
VIOLA. A banquet at the VCF Ruritan Club was held on Sunday evening to honor this year's New Wave Swim Team.

The team which was begun by former Aquatics Director, Denny Berry now has 75 members according to Mike Corash the current Director.

At the banquet one of the high-lights was the recognition of Danny Haines, one of Lake Forest's leading swimmers, who will be joining Coach Corash at Indian River Community College where he will receive a full scholarship. "If anyone deserved a scholarship...it is Danny. He is a real good boy, and I expect him to go far with his swimming. I know that I will be looking after him at Indian River," added Corash.

All members of the New Wave Swim Team received certificates. Others who were singled out and honored were as follows: Wesley Wood, Barbara Murphy, Alys Lange, Angie Mason, Julie Smith, Jana Lynn Smith, and Michael Drew. These swimmers were honored and received recognition for having scored in the top 8 in the State Championships of the U.S. Swimming Team held last December at the Wilmington Aquatic Club.

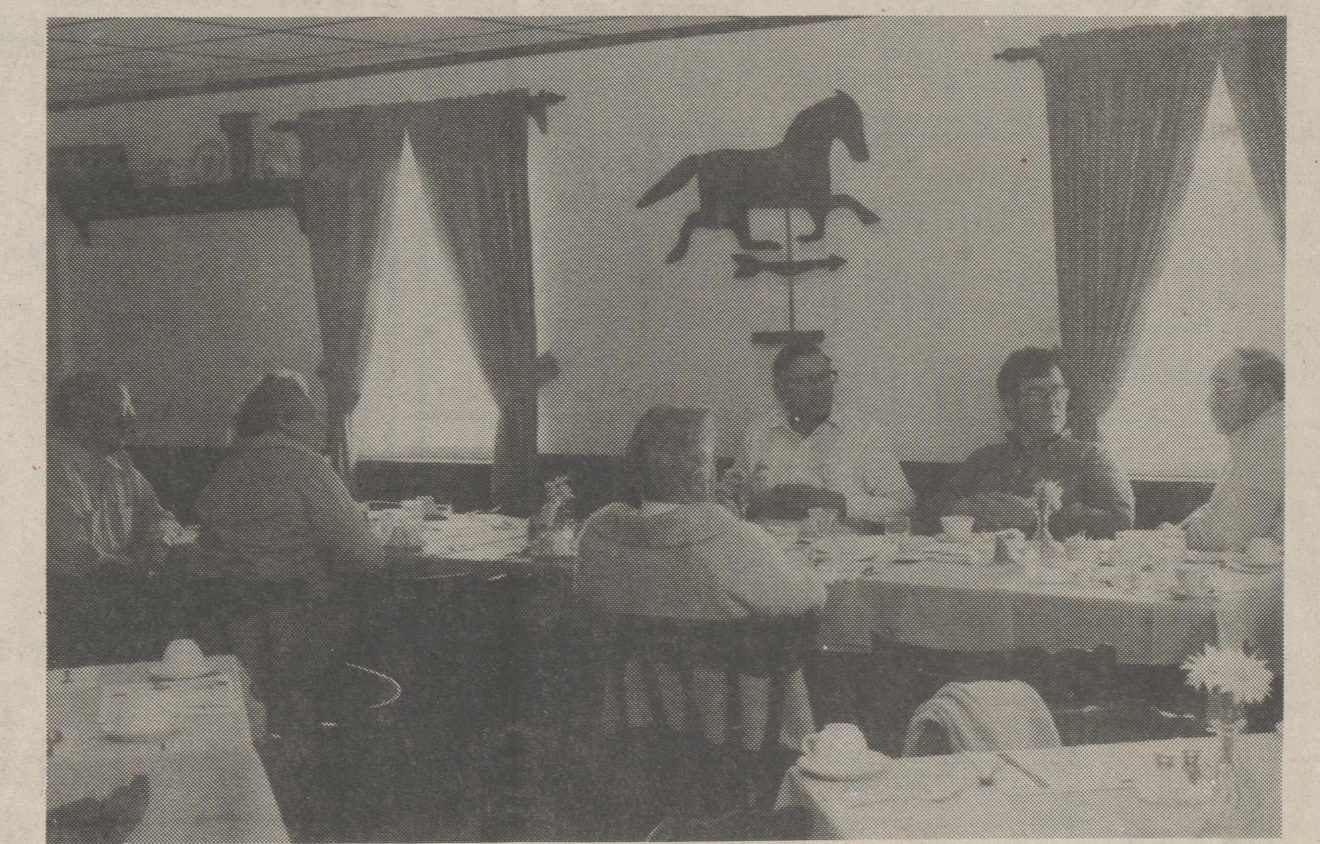
There was a prayer rendered by

Coach Corash which appears on page 10 of this newspaper. "The prayer...I felt coming on was to let all of the members of the team know how I felt about them...and in particular the 11 and 12 year olds who cried when I informed them that I was leaving," said Corash. He went on to say that it is an experience that "...I will never forget. I love all of them...and I wanted them to know how I felt," said Corash.

Mr. Mike Corash, who will be ending his work, but not his influence with the swimmers as of April 1, wrapped up the season with a very inspirational talk for the swimmers. He emphasized to the swimmers that the team needed to continue its work towards team spirit. Many of the actions, activities, and policies which Mr. Corash has developed over the last three months have enunciated the idea of "we" not "me".

The New Wave Swim Team will be continuing its participation in several important events within the next few months. Members will have at least two more scheduled meets, one in late March and one in mid-April. Swimmers for the New Wave team and swimmers from area swim teams will have an opportunity to improve their skills in the Lake Forest Swim Clinic which will be held in mid-May. Mr Corash will be returning to the clinic to assist with the goal setting sessions of the clinic. Joining his efforts will be those of Frank Keefe, 1984 Olympic coach and John Trembley, coach of the National Prep School Champions, of Mercersburg Academy.

The team members would like to take this opportunity to thank the community for its support and would welcome new members to come join in the fun. The team has a lot of team spirit to grow on—THANKS COACH!



A meeting was held last Friday at the Colony Inn to discuss the new Credit Union which is being offered to area residents. The Credit Union [FIFE] offers small loans, forced savings programs, and life insurance. Those at the table are, left to right, Carroll and Grace Welch, Earl Quillen, Bill Conard, Bob Taylor, President; and Cal Hollis with back to camera. Photo by HGF.

Hardee's to help raise money for Hospital

Hardee's Restaurants in Milford, Harrington and Georgetown, Delaware have joined together in a project to raise money for The Milford Memorial Hospital, in Milford, DE.

Beginning Monday, March 18th the restaurants will donate 5 cents to the hospital, for each order of large french fries sold from March 18th through Sunday, March 24th.

Play the Name Game
Win \$\$\$\$\$\$\$



Sheila Jill Saints, seated center, was crowned Miss Delaware-USA on Saturday night at the Milford High School Auditorium. She is joined here with the rest of her court. Photo by HGF.

Miss Delaware-USA 1985 crowned in Milford

On March 16, 1985 Sheila Jill Saints of Wilmington was crowned Miss Delaware-USA. Ceremonies were held at the Milford Senior High School auditorium. Miss Saints will represent Delaware in the Miss USA Pageant on May 13, 1985 in Lakeland, Florida.

Miss Delaware-USA, Sheila Saints is a graduate of the University of Delaware, with a B.A. in Communications/Journalism, and is currently a weathercaster with Rollins Cablevision. Also receiving awards Saturday night were: First Runner-Up, Kimberly Barkmeier of Dover, DE; Second Runner-Up, Lynn Marie Taylor of Montchanin, DE; Third Runner-Up, Sema Monica Tezcan of Wilmington, DE; Fourth Runner-Up, Lisa Ann Dempsey of Newark, DE; Miss Photogenic, Sheila Jill Saints of Wilmington, DE; Miss Congeniality, Kimberly Benson of Wilmington, DE.

The production was MC'd by Chuck Marcus of WSEA and our former Miss Delaware-USA, Miss Denise Lenick was on hand to crown Miss Delaware-USA 1985. The theme for the pageant was a "Southern Holiday", which was produced by Don Blakey. It was a lovely evening with our 26 contestants competing in a photo session, bathing suit competition, evening gown competition, and personal interview. Be sure to watch our Miss Delaware-USA on May 13, 1985 on your local CBS TV channel. The Miss USA Pageant will be telecasted live from Lakeland, Florida.

Obiers Convenience Store sold



Gary Davis

by Harry G. Farrow, Jr.
GREENWOOD. Bobby O'Bier has sold his convenience store at Greenwood. The new owner took possession last Thursday, March 7. He is Gary L. Davis, who used to own the Town & Country Restaurant in Greenwood.

Davis is a native of Greenwood. He continues to operate a 75 acre chicken and grain farm as well as operate a poultry loading business for Allen's Hatchery. Davis plans to use his family in the store. Loretta Smith will continue to operate as manager of the store.

"We will be making a few changes as time goes on. I plan to operate the sandwich part of the store. It will be relocated to where the present check out station is now," he said. "I plan to open that part of the store which is now the sandwich shop, and make it all the general store," he continued.

"We plan to add new lines to the store...as well as selling gas again," he said. They will sell Texaco gas. The hours of business will be from 6 a.m. till 11 p.m. Monday through Friday and 7 a.m. to 11 p.m. Saturdays and Sundays.

The new name will be Davis Deli Market.

AD-
VER-
TISE
IN
THE
HARR-
ING-
TON
JOUR-
NAL
398-
3206
WE
GET
RE-
SULTS



DO
YOU
KNOW
WHAT
YOU
CAN
SELL
IN
THE
CLASS
IFIEDS



JUST
ABOUT
ANY-
THING
AT
ALL!
THE
HARR-
ING-
TON
JOUR-
NAL

398-3206

Wanda Millman attends Freedom Foundation Program

by Harry G. Farrow, Jr.

VALLEY FORGE, Pa. — Wanda Millman, a senior at Lake Forest High School, recently attended the Freedom Foundation Leadership Program held at Valley Forge, Pa. Miss Millman was one of three students from Delaware representing this year's high school program in leadership.

Miss Millman is taking courses at Lake Forest in preparation for entering Del Tech this fall where she will pursue a career in human services. "I hope to enter a career of counseling and psychology with the idea of someday joining a school faculty," she said. It is a 2 year course at Del Tech, and she will then work on a parallel program through the University of Delaware.

Wanda Millman was sponsored by the VCF Ruritan Club in Viola. She will address a State Directors meeting of the Ruritans later this month. "I will use as the theme of my speech to the directors how important it will be for them to continue to send students to the Freedom Foundation Leadership

School," she said.

She said the program lends itself to emphasizing the value you should place on your freedom as well as the importance of leadership. "They made it clear to all of us that we each possess leadership...some more so than others to be sure, but nevertheless that ability exists in all of us."

The speaker who impressed her the most was the individual who escaped from Russia. "He made it quite clear the value of freedom. How in this country we are born into freedom as opposed to how he had to fight to get his (freedom)," she added.

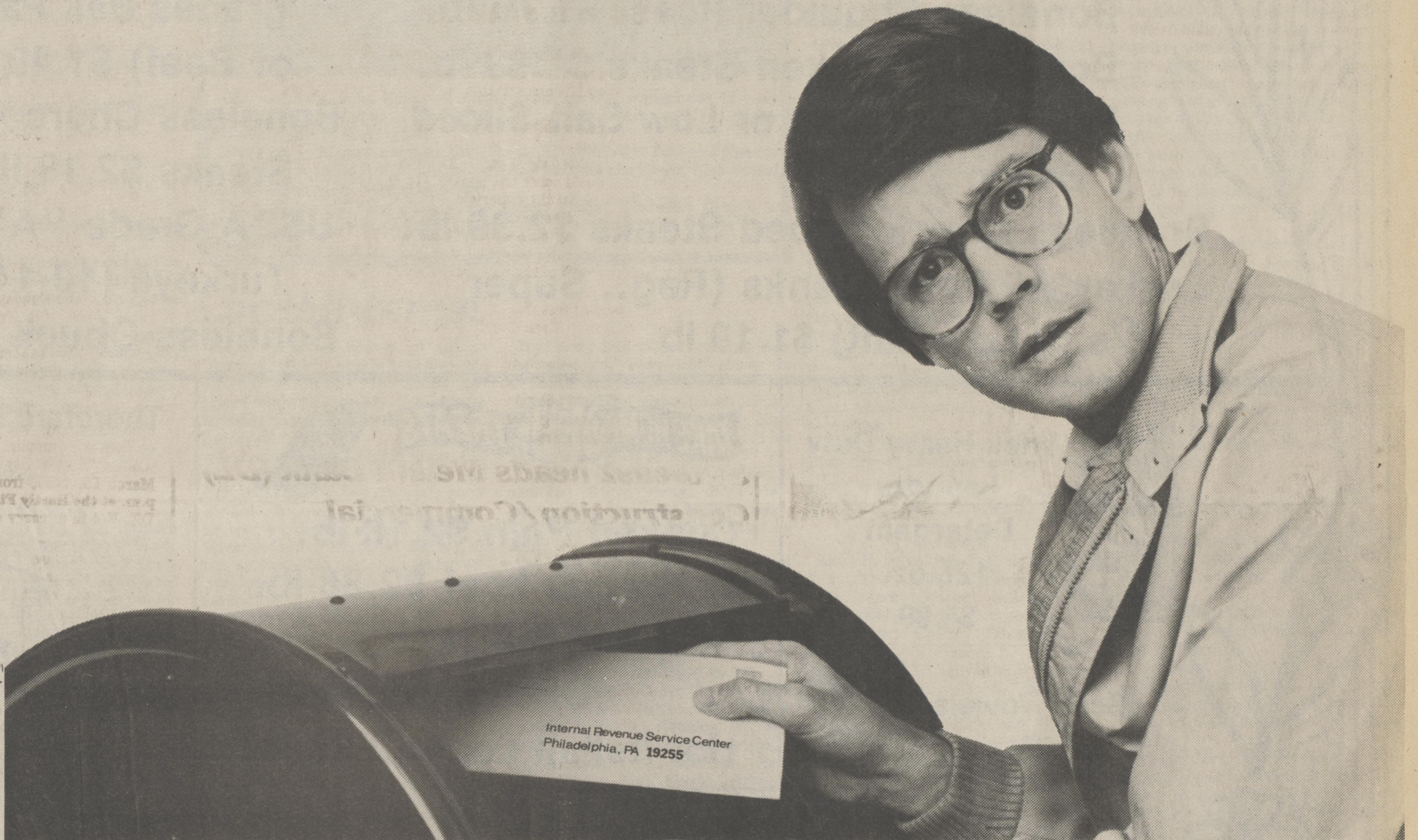
She met students from different states and roomed with a girl from Arizona and Indiana. "I have been corresponding with a girl I met from West Virginia. We hope to get together sometimes later this summer... if it suits," she said.

It is only fitting that Valley Forge is selected as the site of "emphasis on freedom," for it was there that this country began a road to our freedom."



Wanda Millman

Hold It!



You can still get an IRA from Mellon and save hundreds of dollars on your 1984 taxes. Come into Mellon before you file.

Here's what you can save:

If your 1984 marginal tax bracket is:	15%	25%	40%	50%
Invest this much in Individual Retirement Accounts and your tax savings will be:				
\$ 500	\$ 75	\$ 125	\$ 200	\$ 250
1,000	150	250	400	500
2,000 ¹	300	500	800	1,000
4,000 ²	600	1,000	1,600	2,000

¹Maximum contribution, individual tax return.

²Maximum contribution, married couple, each earning at least \$2,000 filing joint tax return.

When you open your 1984 IRA, you can make your 1985 contribution, too, so it will be earning tax-deferred interest for you through the rest of this year. If you don't have the money you need to make your IRA contribution—or if you don't want to use your own cash—ask about a Mellon installment loan or Personal Credit Line.

An IRA from Mellon gives you even more:

More security. A Mellon Individual Retirement Account is insured by the FDIC up to \$100,000 unlike insurance company and broker IRA programs.

Investment options. Choose from two different kinds of investments: fixed rate investments which guarantee a rate for a specific term or our variable rate option where the rate is reset every 91 days.

No management fees. Unlike some other IRAs, a Mellon deposit IRA carries no service charge.

Extra convenience. At Mellon, you don't have to make your entire IRA contribution at one time. You can make deposits through Mellon Bank-by-Phone[®], payroll deduction plans, direct deposit and your Mellon community office. You can also call Mellon's Rate Line for our current interest rates, (302) 429-4980.

It's not too late to save on your 1984 taxes. So stop in your nearest Mellon office and open an IRA today.

Maximum contribution is \$2,250 if you're married and your spouse is not working (some limitations apply). Early withdrawals subject to substantial penalties and to IRS regulations.



Mellon Bank

A neighbor you can count on

Mellon Bank (DE), member FDIC



HARRINGTON FOOD RITE

LOCALLY OWNED AND OPERATED

Quillen Shopping Center

398-4398

NOT RESPONSIBLE FOR TYPOGRAPHICAL ERRORS - WE RESERVE THE RIGHT TO LIMIT QUANTITIES



Monday, Tuesday & Wednesday 8-6
 Thursday 8-8
 Friday 8-9
 Saturday 8-7
 Sunday 10-4



Springtime Specials

- Boneless Chuck Roast \$1.39 lb.
- Boneless Chuck Steaks \$1.69 lb.
- Boneless Shoulder Roast \$1.79 lb.
- Boneless Chicken Steaks \$1.89 lb.
- Esskay Premium or Low Salt Sliced Bacon \$1.69 lb.
- Boneless Chuck Cubed Steaks \$2.39 lb.
- Esskay All Meat Franks (Reg., Super 8's or Low Salt) \$1.19 lb.
- Fresh Lean Ground Chuck-3 lbs. or More \$1.69 lb.
- Hygrades Ball Park Franks (Meat or Beef) \$1.49 lb.
- Boneless Charcoal or Shoulder Steaks \$2.19 lb.
- USDA Grade "A" Self Basting Turkeys (10-14 lb. Avg.) 69¢ lb.
- Boneless Chuck Stew \$1.89 lb.



Wisk Heavy Duty Laundry Detergent
 128 oz.
 \$4.99



Cooked Ham \$2.18 lb.
 Barbeque Loaf \$2.38 lb.
 Low Salt Swiss Cheese \$3.19 lb.
 Hot Italian Loaf \$2.28 lb.

Thorofare Reg. & Thin Spaghetti
 16 oz.
 2/\$1.00



Thorofare Tomato Sauce 15 oz. 3/\$1.00
 Thorofare Evaporated Milk 13 oz. 2/\$1.00
 Pasta D'Italia 16 oz. 2/\$1.00

Scott Towels
 79¢



Chicken of the Sea Chunk Light Tuna/Oil
 6 1/2 oz.
 69¢



Grocer's Pride Applesauce
 50 oz.
 99¢



Northern Assorted Bath Tissue
 6's
 \$1.79

Citrus Hill Chilled Orange Juice
 64 oz.
 \$1.79



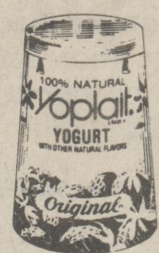
Breakstone Ricotta Cheese
 16 oz.
 \$1.29



Morton Family Salisbury Steak, Turkey, Beef & Onion Patties/Gravy
 32 oz.
 \$1.79

Ore Ida Reg. & Golden Crinkle Cut French Fries
 32 oz.
 \$1.19

Ore Ida Dinner Fries
 24 oz.
 \$1.19



Yoplait Yogurt
 6 oz.
 4/\$1.69

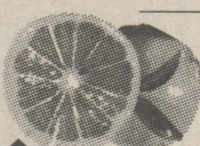
Pillsbury Country Style & Buttermilk Biscuits
 99¢



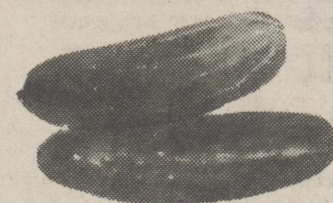
Thompson Seedless Grapes
 99¢



Eastern Red Delicious Apples
 99¢ Bag



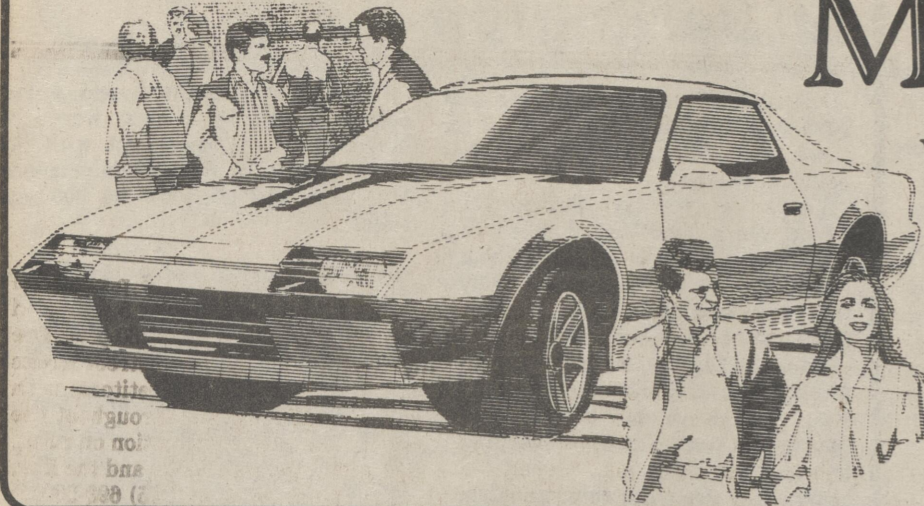
Florida Oranges
 6/99¢



Cucumbers
 3/69¢

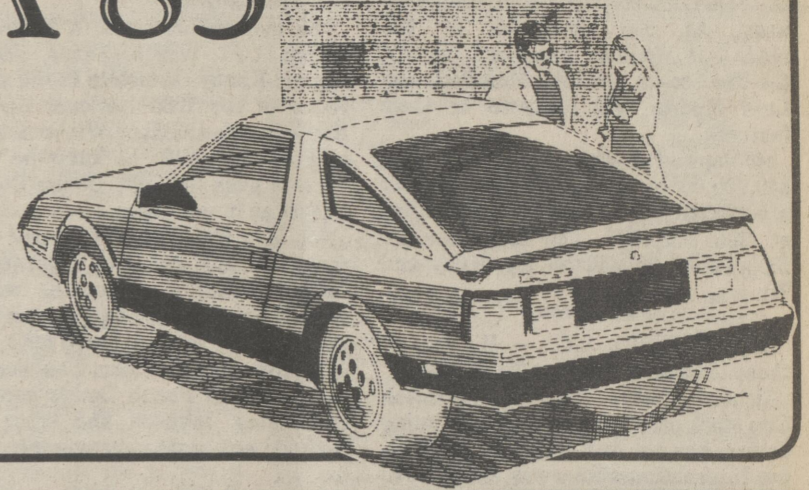


MOTORAMA 85



Wicomico Youth and Civic Center
Salisbury, MD

Friday, March 22nd 5 p.m. to 9 p.m.
Saturday, March 23rd Noon to 9 p.m.
Sunday, March 24th Noon to 5 p.m.



SON SNOOKIE JR. **SON BILL**

SPEED EQUIPMENT & AUTO PARTS
KEROSUN & LENAIR WASTE OIL HEATERS
WELDING & MACHINE SHOP SERVICE
SNOOKIE & SONS SPEED PARTS
R.D. 1, Box 166A - MILTON, DELA. 19968
SNOOKIE - OWNER "See Snookie for your Fuel Needs" ANDY 422-4300
684-8466

IN PERSON
Darrell Waltrip with his
Budweiser Chevrolet
Friday Night Only
PLUS
Big Foot IV

Miller's Performance Center
Located behind Pizza Hut
Rt. 50, Easton, MD
301-822-3999
Specializing in
On/Off Road Vehicles

TRANSMISSION SPECIALTIES
Transmissions-Converters-Components
For All Types of Racing, Street and
Specialty Uses.
Technical Info. call: 800-262-6203
Available Locally From:
JGRC Automotive Performance Center
Salisbury, MD • 301-749-8471

Blue Hen
Cylinder Head Service
Super Street Porting & Speciality
RD. 4, Box 73C
Milford, DE 19963
302-422-6484
K. Bruce Webb

A.J.'s Custom & Off-Road
Now at our New Location
Bigger & Better Than Ever Before
Newly Expanded inventory & Services
Featuring Both Speed & General Auto Parts
Oil Changes-Tune Ups
Engine Rebuilding-Tires-Mounting
Computer Spin Balancing
(up to 50 inch dia. tires)
Fast Efficient Service
S. Rt. 113, Frankford, DE 302-732-6284

McCrea Automotive, Inc.
Specializing in Automatic Transmissions
Street, RV, Tow, and Competition
Warehouse Distributor for
 Transmissions, converters and trans. brakes
301 N. Washington St. • Easton, MD
301-820-7214

Triple Chrome Plating
COPPER - NICKLE - CHROME
PROCINO PLATING
Custom Polishing for
Aluminum, Chrome or Steel
302-875-3663
Dual 13
Laurel, Delaware 19956

NEW LOCATION
J & S AUTOMOTIVE, INC.
2002D N. Salisbury Blvd.
Salisbury, MD 21801
**Automotive Parts &
Machine Shop Services**
Call 301-749-7176 For Automotive Parts
Call 301-749-5719 For Machine Shop

Speed & Sport
Novelities
P.O. Box 315, Easton, MD 21601
301-822-6762
Custom T-Shirts, Hats & Jackets
(for all sports & teams)
Bumper Stickers & Decals
Novelities & Souvenirs of Stock Cars,
Drag Racing, Grand National
Pictures, Buttons & Photo Clocks
All For Sale At Our Booth

RICHARD DIX SIGNS
Quality Custom Lettering
422-4550 • Milford, DE
Rte. 113 At Springhill
• Design
• Pinstriping
• Truck Lettering
Specialist
Race Cars a Specialty
Custom Gold Leafing

East Coast 4WD Center
1703 N. Salisbury Blvd.
Salisbury, MD, 21801
For All Your 4 Wheel Drive Needs
546-4930
Stop in and See Us!
Mon-Tues. Wed-Thurs. Fri-Sat. Bill-Greg-Tim
9-7 9-5 9-7 9-6

SALISBURY
NISSAN
DATSUN
Jeep RENAULT
Rt. 13, Salisbury • 742-5400
See Our
Display
at
Motorama
'85

SUNDANCE CYCLE
SUZUKI
KAWASAKI
YAMAHA
1147 S. Salisbury Blvd.
Salisbury, Md. 21801
301-749-0111

SUNDANCE CYCLE
404 Washington St.
Cambridge, Md. 21613
301-228-8888
GORDON MIKE DENNIS

our 33rd year of service
Hitch Insurance Agency Inc.
ALL FORMS OF INSURANCE
636 SOUTH SALISBURY BOULEVARD
SALISBURY, MARYLAND 21801
301-742-8842
Home 749-7624
STEPHEN R. HITCH

Delmarva Fabricating
Walt Breeding
Charley Langerstein
Federalburg, MD
301-754-9749
We Build Anything From Bumpers
to Complete Race Cars

PRO-RAD
PROFESSIONAL
RADIATOR
Sales 301-742-2424 Service
The Shore's Largest Radiator Service
Auto - Truck - Industrial
Hi-Performance Radiators
Cleaning - Repairing - Recoring
New Complete Radiators & Heaters
Heater & Fuel Tank Repairs
506 Burton Rd.
Salisbury, MD 21801

EAST COAST PERFORMANCE

Hi Performance &
Specialty Parts
for
Street • Strip • & Off-Road
Rt. 113 North
R.D. 3, Box 469
Milford, DE 19963
JEFF POORE, Owner
(302) 422-3278
FAST

5% INTEREST!
NO PAYMENT OR INTEREST FOR
6 MONTHS WITH 10% DEPOSIT
Plus.....
EXTRA LOW SALE PRICES!
Available with 2 or 4 Wheel Drive
Precision-engineered diesels from 24 to 64 P.T.O. Horsepower.
Standard Features: Independent P.T.O., 8 forward & 2 reverse speeds,
differential lock, hydrostatic steering, plus more!
Other financing & lease programs available.
Fuel Injection & Turbocharger Specialists
Cambridge Diesel Service, Inc.
RFD-1, Box 112
East New Market, MD 21631
[301] 228-1200

OLIPHANT
OLIPHANT
OLIPHANT
SALES CHEVROLET SERVICE
"Over 60 Years on Delmarva"
833 S. Salisbury Blvd.
Salisbury, Md.
[301] 749-8111
Rollin' Out
the Thunder
with
Corvette,
Camaro Z28 &
Monte Carlo SS
See You at Motorama '85!

Thanks From
Del-Mar-Va Micro Sprint Asso. (DMSA)
1985 Point Fund Sponsors
To

MILLS BROS. MKTS.
DAN SCHUAMAN
MILFORD FERTILIZER
TAYLOR & MESSICK, INC.
BANKS COMPANY
DELMARVA FABRICATION
LEE MESSICK
HARRINGTON MOTOR CO.
HARRINGTON'S EQUIPMENT
SNOOKIES SPEED PARTS
Meeting of DMSA April 2
7:30p.m. - Shawnee Country Club, Milford
For Info. Call 302-422-6484

Short Takes

(continued from page 8)

The NASCAR Mods will take the green at 12:00 noon for their first qualifying heat. At the conclusion of the NASCAR Modified heats and consist, the Pro Stocks, SNERA Modifieds and Late Models will compete in their features.

145 laps of feature racing for over \$40,000.00 in posted purses. Tickets are available by calling the track office at (203) 923-9591. The Rain-Date for Icebreaker '85 will be April 6th and 7th.

DARLINGTON, S.C. — It's one of those "Unbelievable But True" facts.

Richard Petty, NASCAR Winston Cup stock car racing's all-time winning driver, has not won a race at Darlington International Raceway since 1967.

That's a real head-scratcher, particularly when one considers that Petty has logged 200 career Grand National victories and has won on each of the 15 tracks which compose the Winston Cup schedule.

But it has been 18 years since Petty took the checkered flag at Darlington. There must be something to that explanation. Any competitor will tell you that in order to win at Darlington you must use all your skills and hope that the fates will not conspire against you. Over the years, they have seen fit to do poorly by Petty.

There have been many changes in Petty's career over the last decade. His glory days with Petty Enterprises, which were highlighted not only by that stellar 1967 season, but also by seven Winston Cup championships, have passed. He's now a member of Mike Curb's STP team, headquartered in Kannapolis, N.C., not far from the Petty compound in Level Cross. Petty and the Curb/STP team come to Darlington with a new engine program, operated by Dan Gurney's All-American Racing in Santa Ana, California.

As a competitor who has run the tricky 1.366-mile Darlington track for all of his 25 years in racing, there can be no question Petty knows all the do's and don'ts. He has, over the years, done things wrong and done them right.

"But it has never been a case where I didn't know what to do and when to do it," he said. "It's been a case where a lot of times I haven't had the opportunity." "Still, I have always managed to get around that tough ol' track pretty good. There aren't many drivers who can say that. I think you'll notice that, over the years, three or four drivers have emerged as those who do so much better than the majority of the others."

"Pearson is one. Cale (Yarborough) is another. Bobby (Allison) is another. And one matter what my record says, I think I do pretty good."

"All I need to get people to quit asking me when I'm gonna win at Darlington again is the opportunity — just a chance — to do just that."

The TransSouth 500 is scheduled to get the green flag at 1 p.m. on April 14th.

GAINESVILLE, Fla. — One race. That was all it took for Rick Johnson and his Hawaiian Punch racing crew to go from a respected Funny Car drag

racing team to one that is regarded as truly competitive.

The moment Johnson, a 32-year-old native of Ft. Worth, Texas, lined up against Kenny Bernstein in the second round of the 1985 National Hot Rod Association's (NHRA) Winternationals at Pomona, Calif., he knew he would have to push his 1985 Dodge Daytona as fast as it could go.

Not only had Johnson topped Bernstein, he had run the quickest and fastest Funny Car quarter mile in NHRA history. His elapsed time was a sizzling 5.590 seconds, good for a speed of 263.62 miles per hour. The blue-and-red Hawaiian Punch Dodge had done everything Johnson and crew chief Roland Leon could have possibly hoped for.

What has turned Johnson, Leong and the Hawaiian Punch crew into such immediate contenders?

"Basically, we put in a lot of time in the wind tunnel over the winter," said Johnson. "We found the car's body was caving in and distorting during races. So we eliminated the drag from the body in the wind tunnel and added some horsepower to the engine."

When Johnson first hooked up with Leong at Indianapolis (NHRA U.S. Nationals) in 1984, he told the talented Hawaiian that the car had quite a bit of power, but the energy was not being used as well as it should. Thanks to a winter's worth of work, all has changed for the better.

DARLINGTON, S.C. — His nickname is "Hillbilly" and he speaks with a down-home North Carolina accent, but that's the only thing slow about drag racer Roy Hill.

Hill, who hails from Sophia, N.C., (just a stone's throw from his close friend Richard Petty of stock car racing fame) is preparing for the 1985 International Hot Rod Association (IHRA) Winston World Challenge Series with great expectations.

Hill's 1985 Topaz will sport a 650-plus-cubic-inch motor and will be nearly seven inches narrower than the car he raced last year. These changes, along with the addition of a dyno machine (which Hill feels is a must to stay competitive with top drivers) may keep Hill and his Budget Rent-A-Car crew in the fast lane throughout the IHRA season.

Hill has three IHRA career Pro Stock victories to his credit. His last national event win was posted at the 1978 Winter Nationals. He also has victories at the 1978 Pro-Am Nationals and the 1977 Dixie Nationals to his credit.

The 1985 IHRA-Winston Challenge Series will begin at Darlington, S.C., March 22-24 with the Zoom winter Nationals.

The 12 Hours of Sebring, the oldest racing classic in American road racing, is set to run on March 22-23 with more than \$210,000 in prize money and the debut of a brand new racing series.

The 33rd running of the long Camel GT race is the Coca-Cola Classic and more than 80 entries have been attracted by a record guaranteed purse of \$90,000 plus manufacturers' awards of more than \$51,000.

Coach's Prayer for a Swimmer

Editors Note: This was a prayer rendered at the Banquet on Sunday honoring the members of the New Wave Swim Team.

Build me a swimmer, O Lord, who will be strong enough to know when she is weak and brave enough to face herself when she is afraid; one who will be proud and unbending in honest defeat, but humble and gentle in victory. Build me a swimmer whose wishes will not replace her actions. A swimmer who will know thee, and that to know herself is the foundation stone of knowledge. Send her, I pray, not in the path of ease and comfort but the stress and spur of difficulties and challenge; here let her learn to stand up in the storm, here let her learn compassion for those who fall.

Build me a swimmer whose heart will be clear, whose goal will be high; a swimmer who will master herself before she seeks to master others; one who will learn to laugh, yet never forget how to weep; one who will reach into the future, yet never forget the past, and after all these things are hers this I pray: enough sense of humor that she may always be serious yet never take herself too seriously. Give her humility so that she may always remember the simplicity of true greatness, the open mind of true wisdom, the meekness of true strength; then I, her coach, will dare to whisper, "I have not lived in vain."

Penn National sets April 28 as '85 season opener

Grantville, PA.—Another season of highly competitive small block modified and street stock racing will debut at the half-mile Penn National Speedway clay oval Sunday evening, April 28, when the fourth consecutive season of action is unveiled by Promoters John Wertz and Kenny McMullan.

Opening Day at the popular facility will feature a 25-lap small block main event and a 15-lap street stock feature race along with qualifying heat races for each division.

The top names in small block racing compete at Penn National every Sunday. Billy Schinkel, Dave Schoffstall, Randy Fortna, Davey Wenger, Freddie Rahmer, Mike Follweiler, Ray Swinehart, Matt Reimert, Charlie Eckert, Bobby Gerhart Jr. and many more are expected to be in the weekly cast as the clan gathers each Sunday evening throughout the summer.

Many special shows will be on the 1985 menu. Included will be visits from the United Racing Club winged sprinters on May 12 and August 4; the Memorial Day Spectacular (4-20 lap small block feature) on May 26; the Third Annual Lebanon Valley 100 lap small block modified championship on September 1; MODCAR on September 8 and Run-What-Ya-Brung will serve as a season-closing event on September 15. The street stocks will run a special Pocono Qualifier on August 18.

As in the past, gates will open each week at 5:00 p.m., warm ups will begin at 6:30 p.m. and the green flag will wave for the first event at 7:15 p.m. For more information, contact the speedway business office at (215) 693-5600 any weekday during normal business hours.

W.T. Chipman competes in Stock Market game

by Rebecca Sharp
"Hey, Mrs. Sharp, when do you think the Dow will break 1800?"

"Do you think the possible airline strike will affect my stock?"
"What did IBM close at yesterday?"
These are only a few questions thirty eighth-grade students at W.T. Chipman are asking as they compete in a stock market game. Using ideas presented in eighth grade social studies class, students give up lunch time and study halls to participate.

Sponsored by Butcher & Singer Inc. and Widener University, students are given \$100,000 of "computer money". They use money to buy stocks traded on the New York Stock Exchange. The computer uses daily quotations and allows students to buy or sell at any time. In order to simulate the real world, brokerage fees are charged. Throughout a ten week period, students buy and sell stocks, hopefully increasing their wealth, as they compete against classmates and nearly

3000 teams from Delaware, New Jersey and Pennsylvania. The first place team in the region will win a trip to New York City. The first place team at Chipman will be recognized at a banquet.

In order to prepare for the game, Mr. Eugene Pratt, a stock broker with Dean Witter Reynolds, Inc. spoke to students, giving tips on buying stocks and teaching them how to read the stock market page in the newspaper.

Although the chances of winning a trip to New York are slim they have much enthusiasm for learning a skill they can use when they become adults.
Team 1-2611, David Dolan, Peter Luckenbach, Jonathan Gallaway; Team 2-2612, Danny Lysik, Jamie Dunn, Jeff Williams; Team 3-2613, Darrell Allen, Terry Donovan, Greg Leed; Team 4-2614, Kathy Callahan, Kim Gruwell, Cory Plummer; Team 5-2615, Curt Jackson, Freddy Biggs, Wrightson Gibbs; Team 6-2616, Lisa Sanchez, Tom Stayton, Keith Thompson; Team 7-2617, Greg Collins, Jesse Bishop, Mike Bleen; Team 8-2618, Donnie McCloskey, Wayne Steerman, Darren Lawson; Team 9-2619, Amanda Wilmore, Bonnie Stubbs, Kelly Williams; Team 10-2620, Dawn Andrew, Pam Patterson, Cherie Mayle.

Ron Bouchard goes for 3 at Darlington

DARLINGTON, S.C. — Don't look now, but Ron Bouchard is going for three in a row at Darlington International Raceway.

What's that, you say? Bouchard has never won a NASCAR Winston Cup race at the 1.366-mile track — although he and his Jack Beebe-owned Valvoline team must be considered a good shot in the April 14 TransSouth 500.

True, Bouchard has yet to crack victory lane in a Winston Cup event. But, when it comes to Late Model Sportsman competition at the track, he's been a whiz.

Bouchard, from Fitchburg, Mass., swept the two Sportsman races at Darlington last year, the spring Dixie Cup 200 and the Darlington 200 prior to the Southern 500. In both, he drove Pontiacs owned by Beebe and John Dufour under the banner of Dube Racing.

At Daytona, Bouchard and fellow competitor Bobby Allison were the only drivers to experiment with the V-6 engine, although Allison removed his before the start of the 300-mile event.

"We kept ours in and we were right there with the leaders until a connecting rod broke," said Bouchard. "We didn't lose the engine or anything like that."

Obviously, Bouchard will draw a lot of attention when the green flag falls on the Dixie Cup 200. Not only will he be racing with the V-6 engine — which some say is the future powerplant for the Winston Cup cars — he'll have a chance at being the first man to win three consecutive Sportsman events at Darlington.

"We'll be ready for it," he said. No one should expect anything less.

Frederica

by Mary "Toby" Johnston, 335-5487
Mrs. Frances Davidson and daughter Mrs. Irene Kirkmon attended the stage show "Cats" in Philadelphia Wed. The Adult Center covered Dish Supper was well attended Monday the 11th. Everyone is getting excited now that Spring is here and the building looking better everyday. Welcome back - nice to see you Mrs. Alberta Gibson.

Tuesday, April 12, the U.M.W. met at Trinity Church with 26 members present. Plans are being made for the Annual Spring Clam Fritter—Chicken and Dumpling Supper Saturday, April 13, 1985. Serving to begin at 3:30 p.m. There will be a Bazaar table with many nice gifts and goodies.

Tuesday, April 9, at 6:30 p.m. the U.M.W. will be hostess for the Covered Dish Supper for the Sunday School.

Refreshments were served by Mrs. Dorothy Robbins, Mrs. Merle Roth and Mrs. Kim Robbins.

Good Friday services with a combine choir from Harrington, Felton and Frederica Charges will be held at the Trinity U.M. Church in Harrington, DE, April 5, 7:30 p.m.

Easter Sunrise services will be held at Frederica Trinity Church including Sarda and Saxton at 6:30 a.m. April 7, followed by breakfast served by Trinity U.M.M. Everyone Welcome.

Monday, March 25th, 7:30 p.m. The Administrative Board will meet at Trinity Church.

Confirmation Classes will begin in

April for the Youth 12 and older. For further information call Rev. Bill Downing, 335-4148.

Mrs. Marion Gerow had the misfortune of falling and has been confined to Milford Memorial Hospital.

Mrs. Anna May Sharp is feeling better at this writing but still in Augusta, Ga., Hospital. Those who wish to remember her with card please send to her daughter, Mrs. G. S. Marge, 1925 Fairway Drive, Augusta, Georgia, 30906.

We had a pleasant visit on St. Patty's Day. Our Grandson Ron came over for the afternoon and dinner. Our nephew Drew also dropped by to say Hi.

Lake Forest High Students from Frederica area received mention of Honor yesterday at Church and applause. They were players in "Once Upon A Mattress." Billy-Bette-King Aggravain; Michelle Varney-Lady Helena; Shawn Short-Prince Dauntless; Helen Downing-Playing 2 characters, Princess No. 12 and Maid Emily.

There might have been others around and about but I do not know them. It was enjoyed by all that attended. Best wishes to everyone making the play a success.

Mrs. Kathryn Dill sang "If That Isn't Love" at the Sunday morning church service.

To all that are ill wherever they may be, our prayers and best wishes. May God Bless.

Obituaries

(Continued from page 6)

ROGER W. JUSTICE

SEAFORD — Roger W. Justice, 57, of 1020 Brickyard Road, died of a heart attack Monday, March 11, 1985 in Nanticoke Memorial Hospital.

Mr. Justice retired in 1980 after 20 years with T.G. Adams & Son, a grain and feed business in Bridgeville.

He is survived by his wife, Eleanor L.; two sons, Bruce W. of Bridgeville, and Christopher A. of Millsboro; three daughters, Cheryl L. Gravenor of Bethel, and Patricia J. Roser, and Susan E. Curry, both of Bridgeville; six brothers, Edwin of Selbyville, Raymond of Seaford, Homer, Hoyt, and Chester, all of Laurel, and Charles of Houston, Texas; a sister, Laura Brittingham of Laurel; and six grandchildren.

Services were 1 p.m. Wednesday, March 13 in Trinity United Methodist Church, near Bridgeville, where friends called Tuesday from 7 to 9 p.m. Burial was in Bridgeville Cemetery.

HERMAN J. HUDSON

MILFORD — Herman J. Hudson of 218 Ennis St., Georgetown, died Wednesday, March 13, 1985, in Milford Memorial Hospital after a series of heart attacks. He was 87.

He worked at Dover Air Force Base for six years as an aircraft painter until retiring in 1970. He then worked from 1972 to 1982 as a landfill attendant at Sussex County Landfill No. 4, Lincoln.

He was a World War II infantryman in Gen. George Patton's 3rd Army.

He is survived by his wife, Frances Shockley Hudson, a daughter, Catherine A. Hudson, and a brother, Lloyd W. Hudson, all of Georgetown.

Services were 2 p.m. Saturday, March 16 in Dodd-Carey Funeral Home, Georgetown, where friends called from 7 to 9 p.m. Friday. Burial was in Union Cemetery, Georgetown.

NORMAN E. JONES

NEWARK — Norman E. Jones, 85, of Opus Drive, Christiana Falls,

Newark, died of a gunshot wound Saturday at home.

Details of the case, which is being handled by the state medical examiner's office, were not available from police.

A native of Wilmington, Mr. Jones had been a carpenter with Carpenters Union Local 626 in New Castle for the past eight years. He was a member of St. John's Lodge 2, AF&AM, of New Castle.

He is survived by his father, Vernon of Elkton, Md.; his mother, Merle R. Jones of Bear; a brother, Vernon Gerald of Laurel; a sister, Karen J. Jones of Bear; his paternal grandfather, Theodore Jones of Milford; his paternal grandmother, Florence Landis of New Castle; his maternal grandmother, Vera E. Bannister of Roswell, N.M.; and his fiancée, Mary Jo Barber of Christiana Falls.

Services will be at 2 p.m. today in Graceland Memorial Park Chapel, where friends may call at 1:15. Entombment will be in the adjoining memorial park.

ANDREW B. HILL

DELMAR, Del. — Andrew B. Hill, 93, of Old Stage Road, Delmar, died of congestive heart failure Saturday, March 16, 1985 in Nanticoke Memorial Hospital, Seaford.

Mr. Hill, a retired farmer, was a 60-year member of St. Paul's United Methodist Church.

He is survived by his wife, the former Mary Moore; three sons, Melvin A. of Delmar, Del., and George B. and Preston L., both of Seaford; a daughter, Anabel H. Stahre of West Palm Beach, Fla.; a sister, Bartie Callaway of Milford; 18 grandchildren, 17 great-grandchildren and two great-great-grandchildren.

Services were 11 a.m. Tuesday at Windsor-Disharoon Funeral Home, 700 West St., Laurel, where friends called Monday after 7 p.m. Burial was in Laurel Hill Cemetery.

Read all the latest news in the Harrington Journal every week.

Subscribe to The Harrington Journal 398-3206

YOU CAN MAKE YOUR ORDER REALLY COUNT.

YOUR PURCHASE OF A LARGE FRY AT HARDEE'S WILL HELP MILFORD MEMORIAL HOSPITAL.



Hardee's of Milford, Harrington and Georgetown will donate 5¢ to the Milford Memorial Hospital for every large fry purchased. From Monday, March 18th through Sunday, March 24, treat yourself to some extra fries... for an extra special cause.

It's All Here At, Hardees.

HARDEE'S OF MILFORD • MILFORD SHOPPING CENTER • 33 DUPONT BLVD. • MILFORD, DELAWARE
HARDEE'S OF HARRINGTON • U.S. 13 AND DELAWARE 14 • HARRINGTON, DELAWARE
HARDEE'S OF GEORGETOWN • U.S. 113 AND DELAWARE 18 • GEORGETOWN, DELAWARE



DAWSON BUS TOURS

Camden, DE
For reservations 697-9501
For New Castle & Sussex Counties Only: 800-282-8525

March 23 & April 14'Some Enchanted Evening' The 3 Little Bakers
March 30 Williamsburg Pottery
April 13 Baltimore Inner Harbor
April 20 Tap Dance Kid 2nd Year on Broadway New York City
May 5 '42nd Street Washington, D.C.
May 25 and June 23 'Show Boat' The 3 Little Bakers
June 8 Ringling Brother's Circus
June 15 Great Adventure
June 22 Baltimore Inner Harbor

Nova Scotia
Prince Edward Island
Tour
July 11 thru 21

"Gift Certificates Are Available"
Dawson Bus Service, Inc.

MILLS BROTHER'S SEAFOOD

2 Miles North Of Milford, Rt. 113, Spring Hill

Fresh Perch.....	99¢ lb.
Trout.....	\$1.29 lb.
Medium Shrimp.....	\$4.95 lb. (31-35 Count)

Clams Oysters King Crab Legs Lobster Tails
ANYTHING THAT SWIMS AVAILABLE!
Phone (302) 335-3474
ALL FISH FRESH DAILY

Classifieds

CLASSIFIED RATES
 ALL CLASSIFIEDS: \$2.00 for 15 words or less.
 10 cents for each additional word.
 LEGAL NOTICE/PUBLIC NOTICE: \$3.20 per column inch.
 DEADLINE FOR INSERTION AND CANCELLATION: Monday, 12 Noon.
 ALL CLASSIFIEDS MUST BE PAID IN ADVANCE.
 (302)398-3206

CORRECTIONS
READ YOUR AD THE FIRST DAY IT APPEARS
 Any Corrections to be made must be called in from 8 a.m. to 9 a.m., the day after your ad appears. One (1) extra insertion will be made at no charge for an error not the fault of an advertiser.
 The Harrington Journal WILL NOT be responsible for more than one incorrect insertion.

Services
 Quality printing. Letterheads, forms, envelopes, camera ready or custom. Competitive prices. Harrington Journal. 398-3752. TFN
 Typesetting, layout & composition services. Small and large jobs. Professional results. Quality work. Harrington Journal. 398-3752. TFN
BUSINESS CARDS
 Raised lettering, most colored printing at no extra charge. Most logos and cuts no extra charge. Min. order 500. Quality printing. Guaranteed. Harrington Journal. Stop in to see samples and prices. TFN
 Life Time plastic water well. Call Ken Wood at Life Time Well Drilling, 301-479-0397. TFN

Services
 Gardens worked up - reasonable rates - ready to plant. Call 398-3769 after 4 p.m. 4t4-10

Help Wanted
HELP WANTED: NEWSPAPER DELIVERY PERSON. DROP STOPS ONLY, NO RESIDENTIAL, NO COLLECTING. ONE NIGHT PER WEEK, DOVER AND SOUTH. APPROX 35 STOPS. GOOD PAY. CALL 398-3824, 9-4 DAILY. TFN

Help Wanted: Truck driver and payload operator for feedlot. Farm experience preferred. Call 398-8014 before 5 p.m. TFN
 Part-time Site Manager to provide meal service to older adults. At least one year experience with service organization. Harrington area. Applications available 18 Greenhill Ave., Dover. Equal Opportunity Employer. 2t3-27

Help Wanted: Writer for Local Interest Column
 Harrington Journal. Call 398-3824. TFN

Help Wanted
AIRLINES NOW HIRING. Reservationists, stewardesses and ground crew positions available. Call 1-619-569-0241 for details. 24 hrs. 3t3-27

For Sale
 Franklin wood stove. Mesh screen and doors. Used once. Make offer. Days 398-3824. Evenings 398-4285. TFN

Motocycles - dirt bikes. Suzuki: Excellent running condition. Like new. 1-DS-80; 2-RM-60. Not used very much. Call day 398-3206. After 7 p.m. 398-3250. TFN

Autos-Sale
 Gov't Surplus Cars & Trucks Under \$100. Now available in your area. Call 1-619-569-0242. 3t3-27

For Rent
APPLICATIONS NOW BEING TAKEN 3 1/2 ROOMS, NEWLY CARPETED AND REMODELED. WASH-ER, DRYER, STOVE, REF., GAS HEAT. SUITABLE FOR COUPLE OR COUPLE AND ONE CHILD. ABSOLUTELY NO PETS. OFF STREET PARKING. WALK TO STORES. MUST HAVE REFERENCES, SECURITY, PLUS MONTHS RENT. HGTN. AREA 398-3455. TFN

Wanted to Buy
 Paying highest prices for silver or gold coins, gold jewelry - wedding bands - class rings - diamonds, dental gold, sterling silver items. Also buying Hummels, pocketwatches, baseball cards, stamp collections. 734-7776. First State Coins. 16t6-28

Legal Notice
SHERIFF'S SALE OF VALUABLE REAL ESTATE
 By virtue of a writ of Levari Facias, for the sale of land to me directed, will be exposed to public sale by way of Public Vendue at the front door of the Kent County Court House, Dover, Kent County, State of Delaware, on

Lost
 Lost Ladies Citizen watch. Black band, black face. Louise R. Burgess. 398-8657. Reward. 1t3-20

Free
 Free horse manure u-haul. Call 856-6610 after 5 p.m. TFN

Notice
NOTICE
 The Harrington High School Alumni Association will hold its Annual Membership Meeting on March 26, 1985. For the purpose of electing officers for the 1985-1986 year. Meeting at 7:30 p.m. in the W. T. Chipman School Library. 2t3-20

Sell It Here!
All classifieds must be paid in advance.

Legal Notice
SHERIFF'S SALE OF VALUABLE REAL ESTATE
 By virtue of a writ of Levari Facias, for the sale of land to me directed, will be exposed to public sale by way of Public Vendue at the front door of the Kent County Court House, Dover, Kent County, State of Delaware, on

TUESDAY, APRIL 2, 1985 at 11:00 A.M.
 ALL that certain lot, piece or parcel of land with the improvements thereon erected situated near Williamsville in Mispillion Hundred, Kent County and State of Delaware, lying on the north-westerly side of County Road #884, between County Road #429 and County Road #884-A, being bounded on the southeast by County Road #884, on the southwest and the northwest by lands of Nathaniel Powell, Jr. and on the northeast by other lands of The Peoples Bank of Harrington, and being more particularly described in accordance with a recent survey by Charles C. Brown Associates, Land Surveyors, dated September 21, 1981, as follows, to-wit: BEGINNING at a concrete monument in the northwest line of County Road #884 at a corner for this lot and for other lands of The Peoples Bank of Harrington, said point of beginning being the following two (2) courses from the intersection of the centerline of County Road #884-A with the centerline of County Road #884: (1) running with the centerline of County Road #884 in a southwesterly direction 1092.5 feet; then (2) North 55 degrees 28 minutes 40 seconds West 25.0 feet to the place of beginning; thence running from said point of beginning with the northwest line of County Road #884 South 84 degrees 26 minutes 20 seconds West 108.0 feet to a concrete monument at a corner for this lot and for lands of Nathaniel Powell, Jr.; thence running with said lands of Nathaniel Powell, Jr. on the following two (2) courses: (1) North 52 degrees 10 minutes West 210.0 feet; then (2) North 84 degrees 28 minutes 20 seconds East 105.0 feet to a corner for this lot and for other lands of The Peoples Bank of Harrington; thence running with said other lands of The Peoples Bank of Harrington South 82 degrees 10 minutes East 210.0 feet to the point and place of beginning, and containing 0.5063 acre of land, be the same more or less. AND being the same lands and premises conveyed unto Elijah

Worthy, single man, by deed of The Peoples Bank of Harrington, a corporation of the State of Delaware, dated the 30th day of September, A.D. 1981, and recorded in the office of the Recorder of Deeds, Kent County, Delaware, in Deed Record Book I, Volume 86, Page 206. Which has the address of R.D. #1, Box 1495, Greenwood, Delaware 19950 (herein "Property Address");

IMPROVEMENTS: 1 Family Dwelling
 Terms of SALE: 20% day of sale and the balance on May 6, 1985. Sale subject to confirmation by Superior Court and also subject to a 2% Delaware Realty Tax: 1% to be paid by Seller and 1% by the Purchaser. Seized and taken in execution as the property of: ELIJAH WORTHY will be sold by

CARL M. WRIGHT, Sheriff
 Sheriff's Office
 Dover, Delaware
 3t3-27

SHERIFF'S SALE OF VALUABLE REAL ESTATE
 By virtue of a writ of Levari Facias, for the sale of land to me directed, will be exposed to public sale by way of Public Vendue at the front door of the Kent County Court House, Dover, Kent County, State of Delaware, on

THURSDAY, APRIL 4, 1985 at 11:00 A.M.
 ALL that certain lot, piece or parcel of land, situated in Milford Hundred, Kent County and State of Delaware, lying on the West side of U.S. Route 113, the dual highway between Milford and Frederica, bounded on the East by the said U.S. Route 113, on the North by lands now or late of Harry Kaiser, on the West by lands now or late of Georgianna Donovan, and more particularly described as follows, to-wit: BEGINNING at a concrete monument situated in the West right-of-way line of U.S. Route #113 at a corner for this parcel and for lands now or late of Harry Kaiser; thence running with said right-of-way line South 9 degrees East 80 feet to a stake set in said right-of-way line at a corner for this parcel and for lands of Georgianna Donovan; thence running with the North line of said Donovan lands, South 81

degrees West 210 feet to a stake set at a corner for this parcel and for said Donovan lands; thence with line of lands of James A. Solloway North 9 degrees West 80 feet to a corner for this parcel and for other lands of said Solloway in line of lands now or late of Harry Kaiser; thence with line of lands of said Kaiser North 81 degrees East 210 feet back to the place of beginning, and containing 16,800 square feet of land, be the same more or less. AND BEING the same lands and premises which were conveyed unto Jimmy S. White and Virginia L. White, his wife, by deed of Orlyn L. Pitman and Mary H. Pitman, his wife, bearing even date herewith and as recorded in the office of the Recorder of Deeds in and for Kent County at Dover in Deed Record Book H, Volume 82, Page 320.

IMPROVEMENTS: 16 x 24 Garage
 Terms of SALE: 20% day of sale and the balance on May 6, 1985. Sale subject to confirmation by Superior Court and also subject to a 2% Delaware Realty Tax: 1% to be paid by Seller and 1% by the Purchaser. Seized and taken in execution as the property of: JIMMY S. WHITE & VIRGINIA L. WHITE will be sold by

CARL M. WRIGHT, Sheriff
 Sheriff's Office
 Dover, Delaware
 3t3-27

Legal Notice
SHERIFF'S SALE OF VALUABLE REAL ESTATE
 By virtue of a writ of Levari Facias, for the sale of land to me directed, will be exposed to public sale by way of Public Vendue at the front door of the Kent County Court House, Dover, Kent County, State of Delaware, on

TUESDAY, APRIL 2, 1985 at 11:00 A.M.
 ALL that certain lot, piece or parcel of land with the improvements thereon erected situated near Williamsville in Mispillion Hundred, Kent County and State of Delaware, lying on the north-westerly side of County Road #884, between County Road #429 and County Road #884-A, being bounded on the southeast by County Road #884, on the southwest and the northwest by lands of Nathaniel Powell, Jr. and on the northeast by other lands of The Peoples Bank of Harrington, and being more particularly described in accordance with a recent survey by Charles C. Brown Associates, Land Surveyors, dated September 21, 1981, as follows, to-wit: BEGINNING at a concrete monument in the northwest line of County Road #884 at a corner for this lot and for other lands of The Peoples Bank of Harrington, said point of beginning being the following two (2) courses from the intersection of the centerline of County Road #884-A with the centerline of County Road #884: (1) running with the centerline of County Road #884 in a southwesterly direction 1092.5 feet; then (2) North 55 degrees 28 minutes 40 seconds West 25.0 feet to the place of beginning; thence running from said point of beginning with the northwest line of County Road #884 South 84 degrees 26 minutes 20 seconds West 108.0 feet to a concrete monument at a corner for this lot and for lands of Nathaniel Powell, Jr.; thence running with said lands of Nathaniel Powell, Jr. on the following two (2) courses: (1) North 52 degrees 10 minutes West 210.0 feet; then (2) North 84 degrees 28 minutes 20 seconds East 105.0 feet to a corner for this lot and for other lands of The Peoples Bank of Harrington; thence running with said other lands of The Peoples Bank of Harrington South 82 degrees 10 minutes East 210.0 feet to the point and place of beginning, and containing 0.5063 acre of land, be the same more or less. AND being the same lands and premises conveyed unto Elijah

Worthy, single man, by deed of The Peoples Bank of Harrington, a corporation of the State of Delaware, dated the 30th day of September, A.D. 1981, and recorded in the office of the Recorder of Deeds, Kent County, Delaware, in Deed Record Book I, Volume 86, Page 206. Which has the address of R.D. #1, Box 1495, Greenwood, Delaware 19950 (herein "Property Address");

IMPROVEMENTS: 1 Family Dwelling
 Terms of SALE: 20% day of sale and the balance on May 6, 1985. Sale subject to confirmation by Superior Court and also subject to a 2% Delaware Realty Tax: 1% to be paid by Seller and 1% by the Purchaser. Seized and taken in execution as the property of: ELIJAH WORTHY will be sold by

CARL M. WRIGHT, Sheriff
 Sheriff's Office
 Dover, Delaware
 3t3-27

SHERIFF'S SALE OF VALUABLE REAL ESTATE
 By virtue of a writ of Levari Facias, for the sale of land to me directed, will be exposed to public sale by way of Public Vendue at the front door of the Kent County Court House, Dover, Kent County, State of Delaware, on

THURSDAY, APRIL 4, 1985 at 11:00 A.M.
 ALL that certain lot, piece or parcel of land, situated in Milford Hundred, Kent County and State of Delaware, lying on the West side of U.S. Route 113, the dual highway between Milford and Frederica, bounded on the East by the said U.S. Route 113, on the North by lands now or late of Harry Kaiser, on the West by lands now or late of Georgianna Donovan, and more particularly described as follows, to-wit: BEGINNING at a concrete monument situated in the West right-of-way line of U.S. Route #113 at a corner for this parcel and for lands now or late of Harry Kaiser; thence running with said right-of-way line South 9 degrees East 80 feet to a stake set in said right-of-way line at a corner for this parcel and for lands of Georgianna Donovan; thence running with the North line of said Donovan lands, South 81

degrees West 210 feet to a stake set at a corner for this parcel and for said Donovan lands; thence with line of lands of James A. Solloway North 9 degrees West 80 feet to a corner for this parcel and for other lands of said Solloway in line of lands now or late of Harry Kaiser; thence with line of lands of said Kaiser North 81 degrees East 210 feet back to the place of beginning, and containing 16,800 square feet of land, be the same more or less. AND BEING the same lands and premises which were conveyed unto Jimmy S. White and Virginia L. White, his wife, by deed of Orlyn L. Pitman and Mary H. Pitman, his wife, bearing even date herewith and as recorded in the office of the Recorder of Deeds in and for Kent County at Dover in Deed Record Book H, Volume 82, Page 320.

IMPROVEMENTS: 16 x 24 Garage
 Terms of SALE: 20% day of sale and the balance on May 6, 1985. Sale subject to confirmation by Superior Court and also subject to a 2% Delaware Realty Tax: 1% to be paid by Seller and 1% by the Purchaser. Seized and taken in execution as the property of: JIMMY S. WHITE & VIRGINIA L. WHITE will be sold by

CARL M. WRIGHT, Sheriff
 Sheriff's Office
 Dover, Delaware
 3t3-27

Legal Notice
SHERIFF'S SALE OF VALUABLE REAL ESTATE
 By virtue of a writ of Levari Facias, for the sale of land to me directed, will be exposed to public sale by way of Public Vendue at the front door of the Kent County Court House, Dover, Kent County, State of Delaware, on

TUESDAY, APRIL 2, 1985 at 11:00 A.M.
 ALL that certain lot, piece or parcel of land with the improvements thereon erected situated near Williamsville in Mispillion Hundred, Kent County and State of Delaware, lying on the north-westerly side of County Road #884, between County Road #429 and County Road #884-A, being bounded on the southeast by County Road #884, on the southwest and the northwest by lands of Nathaniel Powell, Jr. and on the northeast by other lands of The Peoples Bank of Harrington, and being more particularly described in accordance with a recent survey by Charles C. Brown Associates, Land Surveyors, dated September 21, 1981, as follows, to-wit: BEGINNING at a concrete monument in the northwest line of County Road #884 at a corner for this lot and for other lands of The Peoples Bank of Harrington, said point of beginning being the following two (2) courses from the intersection of the centerline of County Road #884-A with the centerline of County Road #884: (1) running with the centerline of County Road #884 in a southwesterly direction 1092.5 feet; then (2) North 55 degrees 28 minutes 40 seconds West 25.0 feet to the place of beginning; thence running from said point of beginning with the northwest line of County Road #884 South 84 degrees 26 minutes 20 seconds West 108.0 feet to a concrete monument at a corner for this lot and for lands of Nathaniel Powell, Jr.; thence running with said lands of Nathaniel Powell, Jr. on the following two (2) courses: (1) North 52 degrees 10 minutes West 210.0 feet; then (2) North 84 degrees 28 minutes 20 seconds East 105.0 feet to a corner for this lot and for other lands of The Peoples Bank of Harrington; thence running with said other lands of The Peoples Bank of Harrington South 82 degrees 10 minutes East 210.0 feet to the point and place of beginning, and containing 0.5063 acre of land, be the same more or less. AND being the same lands and premises conveyed unto Elijah

Worthy, single man, by deed of The Peoples Bank of Harrington, a corporation of the State of Delaware, dated the 30th day of September, A.D. 1981, and recorded in the office of the Recorder of Deeds, Kent County, Delaware, in Deed Record Book I, Volume 86, Page 206. Which has the address of R.D. #1, Box 1495, Greenwood, Delaware 19950 (herein "Property Address");

IMPROVEMENTS: 1 Family Dwelling
 Terms of SALE: 20% day of sale and the balance on May 6, 1985. Sale subject to confirmation by Superior Court and also subject to a 2% Delaware Realty Tax: 1% to be paid by Seller and 1% by the Purchaser. Seized and taken in execution as the property of: ELIJAH WORTHY will be sold by

CARL M. WRIGHT, Sheriff
 Sheriff's Office
 Dover, Delaware
 3t3-27

SHERIFF'S SALE OF VALUABLE REAL ESTATE
 By virtue of a writ of Levari Facias, for the sale of land to me directed, will be exposed to public sale by way of Public Vendue at the front door of the Kent County Court House, Dover, Kent County, State of Delaware, on

THURSDAY, APRIL 4, 1985 at 11:00 A.M.
 ALL that certain lot, piece or parcel of land, situated in Milford Hundred, Kent County and State of Delaware, lying on the West side of U.S. Route 113, the dual highway between Milford and Frederica, bounded on the East by the said U.S. Route 113, on the North by lands now or late of Harry Kaiser, on the West by lands now or late of Georgianna Donovan, and more particularly described as follows, to-wit: BEGINNING at a concrete monument situated in the West right-of-way line of U.S. Route #113 at a corner for this parcel and for lands now or late of Harry Kaiser; thence running with said right-of-way line South 9 degrees East 80 feet to a stake set in said right-of-way line at a corner for this parcel and for lands of Georgianna Donovan; thence running with the North line of said Donovan lands, South 81

degrees West 210 feet to a stake set at a corner for this parcel and for said Donovan lands; thence with line of lands of James A. Solloway North 9 degrees West 80 feet to a corner for this parcel and for other lands of said Solloway in line of lands now or late of Harry Kaiser; thence with line of lands of said Kaiser North 81 degrees East 210 feet back to the place of beginning, and containing 16,800 square feet of land, be the same more or less. AND BEING the same lands and premises which were conveyed unto Jimmy S. White and Virginia L. White, his wife, by deed of Orlyn L. Pitman and Mary H. Pitman, his wife, bearing even date herewith and as recorded in the office of the Recorder of Deeds in and for Kent County at Dover in Deed Record Book H, Volume 82, Page 320.

IMPROVEMENTS: 16 x 24 Garage
 Terms of SALE: 20% day of sale and the balance on May 6, 1985. Sale subject to confirmation by Superior Court and also subject to a 2% Delaware Realty Tax: 1% to be paid by Seller and 1% by the Purchaser. Seized and taken in execution as the property of: JIMMY S. WHITE & VIRGINIA L. WHITE will be sold by

CARL M. WRIGHT, Sheriff
 Sheriff's Office
 Dover, Delaware
 3t3-27

Legal Notice
SHERIFF'S SALE OF VALUABLE REAL ESTATE
 By virtue of a writ of Levari Facias, for the sale of land to me directed, will be exposed to public sale by way of Public Vendue at the front door of the Kent County Court House, Dover, Kent County, State of Delaware, on

TUESDAY, APRIL 2, 1985 at 11:00 A.M.
 ALL that certain lot, piece or parcel of land with the improvements thereon erected situated near Williamsville in Mispillion Hundred, Kent County and State of Delaware, lying on the north-westerly side of County Road #884, between County Road #429 and County Road #884-A, being bounded on the southeast by County Road #884, on the southwest and the northwest by lands of Nathaniel Powell, Jr. and on the northeast by other lands of The Peoples Bank of Harrington, and being more particularly described in accordance with a recent survey by Charles C. Brown Associates, Land Surveyors, dated September 21, 1981, as follows, to-wit: BEGINNING at a concrete monument in the northwest line of County Road #884 at a corner for this lot and for other lands of The Peoples Bank of Harrington, said point of beginning being the following two (2) courses from the intersection of the centerline of County Road #884-A with the centerline of County Road #884: (1) running with the centerline of County Road #884 in a southwesterly direction 1092.5 feet; then (2) North 55 degrees 28 minutes 40 seconds West 25.0 feet to the place of beginning; thence running from said point of beginning with the northwest line of County Road #884 South 84 degrees 26 minutes 20 seconds West 108.0 feet to a concrete monument at a corner for this lot and for lands of Nathaniel Powell, Jr.; thence running with said lands of Nathaniel Powell, Jr. on the following two (2) courses: (1) North 52 degrees 10 minutes West 210.0 feet; then (2) North 84 degrees 28 minutes 20 seconds East 105.0 feet to a corner for this lot and for other lands of The Peoples Bank of Harrington; thence running with said other lands of The Peoples Bank of Harrington South 82 degrees 10 minutes East 210.0 feet to the point and place of beginning, and containing 0.5063 acre of land, be the same more or less. AND being the same lands and premises conveyed unto Elijah

Worthy, single man, by deed of The Peoples Bank of Harrington, a corporation of the State of Delaware, dated the 30th day of September, A.D. 1981, and recorded in the office of the Recorder of Deeds, Kent County, Delaware, in Deed Record Book I, Volume 86, Page 206. Which has the address of R.D. #1, Box 1495, Greenwood, Delaware 19950 (herein "Property Address");

IMPROVEMENTS: 1 Family Dwelling
 Terms of SALE: 20% day of sale and the balance on May 6, 1985. Sale subject to confirmation by Superior Court and also subject to a 2% Delaware Realty Tax: 1% to be paid by Seller and 1% by the Purchaser. Seized and taken in execution as the property of: ELIJAH WORTHY will be sold by

CARL M. WRIGHT, Sheriff
 Sheriff's Office
 Dover, Delaware
 3t3-27

SHERIFF'S SALE OF VALUABLE REAL ESTATE
 By virtue of a writ of Levari Facias, for the sale of land to me directed, will be exposed to public sale by way of Public Vendue at the front door of the Kent County Court House, Dover, Kent County, State of Delaware, on

THURSDAY, APRIL 4, 1985 at 11:00 A.M.
 ALL that certain lot, piece or parcel of land, situated in Milford Hundred, Kent County and State of Delaware, lying on the West side of U.S. Route 113, the dual highway between Milford and Frederica, bounded on the East by the said U.S. Route 113, on the North by lands now or late of Harry Kaiser, on the West by lands now or late of Georgianna Donovan, and more particularly described as follows, to-wit: BEGINNING at a concrete monument situated in the West right-of-way line of U.S. Route #113 at a corner for this parcel and for lands now or late of Harry Kaiser; thence running with said right-of-way line South 9 degrees East 80 feet to a stake set in said right-of-way line at a corner for this parcel and for lands of Georgianna Donovan; thence running with the North line of said Donovan lands, South 81

degrees West 210 feet to a stake set at a corner for this parcel and for said Donovan lands; thence with line of lands of James A. Solloway North 9 degrees West 80 feet to a corner for this parcel and for other lands of said Solloway in line of lands now or late of Harry Kaiser; thence with line of lands of said Kaiser North 81 degrees East 210 feet back to the place of beginning, and containing 16,800 square feet of land, be the same more or less. AND BEING the same lands and premises which were conveyed unto Jimmy S. White and Virginia L. White, his wife, by deed of Orlyn L. Pitman and Mary H. Pitman, his wife, bearing even date herewith and as recorded in the office of the Recorder of Deeds in and for Kent County at Dover in Deed Record Book H, Volume 82, Page 320.

IMPROVEMENTS: 16 x 24 Garage
 Terms of SALE: 20% day of sale and the balance on May 6, 1985. Sale subject to confirmation by Superior Court and also subject to a 2% Delaware Realty Tax: 1% to be paid by Seller and 1% by the Purchaser. Seized and taken in execution as the property of: JIMMY S. WHITE & VIRGINIA L. WHITE will be sold by

CARL M. WRIGHT, Sheriff
 Sheriff's Office
 Dover, Delaware
 3t3-27

Legal Notice
SHERIFF'S SALE OF VALUABLE REAL ESTATE
 By virtue of a writ of Levari Facias, for the sale of land to me directed, will be exposed to public sale by way of Public Vendue at the front door of the Kent County Court House, Dover, Kent County, State of Delaware, on

TUESDAY, APRIL 2, 1985 at 11:00 A.M.
 ALL that certain lot, piece or parcel of land with the improvements thereon erected situated near Williamsville in Mispillion Hundred, Kent County and State of Delaware, lying on the north-westerly side of County Road #884, between County Road #429 and County Road #884-A, being bounded on the southeast by County Road #884, on the southwest and the northwest by lands of Nathaniel Powell, Jr. and on the northeast by other lands of The Peoples Bank of Harrington, and being more particularly described in accordance with a recent survey by Charles C. Brown Associates, Land Surveyors, dated September 21, 1981, as follows, to-wit: BEGINNING at a concrete monument in the northwest line of County Road #884 at a corner for this lot and for other lands of The Peoples Bank of Harrington, said point of beginning being the following two (2) courses from the intersection of the centerline of County Road #884-A with the centerline of County Road #884: (1) running with the centerline of County Road #884 in a southwesterly direction 1092.5 feet; then (2) North 55 degrees 28 minutes 40 seconds West 25.0 feet to the place of beginning; thence running from said point of beginning with the northwest line of County Road #884 South 84 degrees 26 minutes 20 seconds West 108.0 feet to a concrete monument at a corner for this lot and for lands of Nathaniel Powell, Jr.; thence running with said lands of Nathaniel Powell, Jr. on the following two (2) courses: (1) North 52 degrees 10 minutes West 210.0 feet; then (2) North 84 degrees 28 minutes 20 seconds East 105.0 feet to a corner for this lot and for other lands of The Peoples Bank of Harrington; thence running with said other lands of The Peoples Bank of Harrington South 82 degrees 10 minutes East 210.0 feet to the point and place of beginning, and containing 0.5063 acre of land, be the same more or less. AND being the same lands and premises conveyed unto Elijah

Worthy, single man, by deed of The Peoples Bank of Harrington, a corporation of the State of Delaware, dated the 30th day of September, A.D. 1981, and recorded in the office of the Recorder of Deeds, Kent County, Delaware, in Deed Record Book I, Volume 86, Page 206. Which has the address of R.D. #1, Box 1495, Greenwood, Delaware 19950 (herein "Property Address");

IMPROVEMENTS: 1 Family Dwelling
 Terms of SALE: 20% day of sale and the balance on May 6, 1985. Sale subject to confirmation by Superior Court and also subject to a 2% Delaware Realty Tax: 1% to be paid by Seller and 1% by the Purchaser. Seized and taken in execution as the property of: ELIJAH WORTHY will be sold by

CARL M. WRIGHT, Sheriff
 Sheriff's Office
 Dover, Delaware
 3t3-27

SHERIFF'S SALE OF VALUABLE REAL ESTATE
 By virtue of a writ of Levari Facias, for the sale of land to me directed, will be exposed to public sale by way of Public Vendue at the front door of the Kent County Court House, Dover, Kent County, State of Delaware, on

THURSDAY, APRIL 4, 1985 at 11:00 A.M.
 ALL that certain lot, piece or parcel of land, situated in Milford Hundred, Kent County and State of Delaware, lying on the West side of U.S. Route 113, the dual highway between Milford and Frederica, bounded on the East by the said U.S. Route 113, on the North by lands now or late of Harry Kaiser, on the West by lands now or late of Georgianna Donovan, and more particularly described as follows, to-wit: BEGINNING at a concrete monument situated in the West right-of-way line of U.S. Route #113 at a corner for this parcel and for lands now or late of Harry Kaiser; thence running with said right-of-way line South 9 degrees East 80 feet to a stake set in said right-of-way line at a corner for this parcel and for lands of Georgianna Donovan; thence running with the North line of said Donovan lands, South 81

degrees West 210 feet to a stake set at a corner for this parcel and for said Donovan lands; thence with line of lands of James A. Solloway North 9 degrees West 80 feet to a corner for this parcel and for other lands of said Solloway in line of lands now or late of Harry Kaiser; thence with line of lands of said Kaiser North 81 degrees East 210 feet back to the place of beginning, and containing 16,800 square feet of land, be the same more or less. AND BEING the same lands and premises which were conveyed unto Jimmy S. White and Virginia L. White, his wife, by deed of Orlyn L. Pitman and Mary H. Pitman, his wife, bearing even date herewith and as recorded in the office of the Recorder of Deeds in and for Kent County at Dover in Deed Record Book H, Volume 82, Page 320.

IMPROVEMENTS: 16 x 24 Garage
 Terms of SALE: 20% day of sale and the balance on May 6, 1985. Sale subject to confirmation by Superior Court and also subject to a 2% Delaware Realty Tax: 1% to be paid by Seller and 1% by the Purchaser. Seized and taken in execution as the property of: JIMMY S. WHITE & VIRGINIA L. WHITE will be sold by

CARL M. WRIGHT, Sheriff
 Sheriff's Office
 Dover, Delaware
 3t3-27

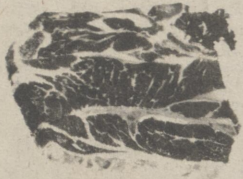
Legal Notice
SHERIFF'S SALE OF VALUABLE REAL ESTATE
 By virtue of a writ of Levari Facias, for the sale of land to me directed, will be exposed to public sale by way of Public Vendue at the front door of the Kent County Court House, Dover, Kent County, State of Delaware, on

TUESDAY, APRIL 2, 1985 at 11:00 A.M.
 ALL that certain lot, piece or parcel of land with the improvements thereon erected situated near Williamsville in Mispillion Hundred, Kent County and State of Delaware, lying on the north-westerly side of County Road #884, between County Road #429 and County Road #884-A, being bounded on the southeast by County Road #884, on the southwest and the northwest by lands of Nathaniel Powell, Jr. and on the northeast by other lands of The Peoples Bank of Harrington, and being more particularly described in accordance with a recent survey by Charles C. Brown Associates, Land Surveyors, dated September 21, 1981, as follows, to-wit: BEGINNING at a concrete monument in the northwest line of County Road #884 at a corner for this lot and for other lands of The Peoples Bank of Harrington, said point of beginning being the following two (2) courses from the intersection of the centerline of County Road #884-A with the centerline of County Road #884: (1) running with the centerline of County Road #884 in a southwesterly direction 1092.5 feet; then (2) North 55 degrees 28 minutes 40 seconds West 25.0 feet to the place of beginning; thence running from said point of beginning with the northwest line of County Road #884 South 84 degrees 26 minutes 20 seconds West 108.0 feet to a concrete monument at a corner for this lot and for lands of Nathaniel Powell, Jr.; thence running with said lands of Nathaniel Powell, Jr. on the following two (2) courses: (1) North 52 degrees 10 minutes West 210.0 feet; then (2) North 84 degrees 28 minutes 20 seconds East 105.0 feet to a corner for this lot and for other lands of The Peoples Bank of Harrington; thence running with said other lands of The Peoples Bank of Harrington South 82 degrees 10 minutes East 210.0 feet to the point and place of beginning, and containing 0.5063



Unbeatable SPRING VALUES

U.S.D.A. Choice Chuck Roasts-Blade End Cuts \$1.39 lb.



-Center Cuts \$1.49 lb.

-Boneless \$1.69 lb.

-Steaks-Bone In \$1.59 lb.

-Crosscut Roasts-Boneless \$2.19 lb.

-Lean Beef Cubes \$2.19 lb.

Ground Chuck-Lean Fresh Ground \$1.99 lb. — 5 lbs. or More \$1.89 lb.



Esskay's Early Joy
Sliced Bacon
1 lb. Vac Pac
\$1.39 lb.



Esskay
Bar-B-Q Loaf
Deli Sliced
\$2.29 lb.

Schmidt's "Old-Tyme"
100% Whole Wheat Bread
16 oz. Loaf
79¢



New!

Snuggly Softness
That's Less Expensive

"Snuggle" Concentrated
Fabric Softener

32 oz. Container

99¢



Sunshine Cheez-It
Crackers
16 oz. Pkg.
\$1.29



Hunt's
Tomato Sauce
2-15 oz. Cans
\$1.00



Spring Specials



Spring Cleaning Values from Lysol



Lysol
BASIN/TUB/TILE
CLEANER
Deodorizes and Cleans
• non-abrasive
• no rinsing
• no scrubbing

Lysol Basin-
Tub Tile
Cleaner
17 oz. Can
\$1.19



Lysol
Deodorizing
Cleaner
28 oz. Container
\$1.59



Lysol Liquid
Disinfectant
Toilet Bowl
Cleaner
16 oz. Jar
69¢

"Love-My-
Carpet" Rug
& Room
Deodorizer
14 oz. Canister



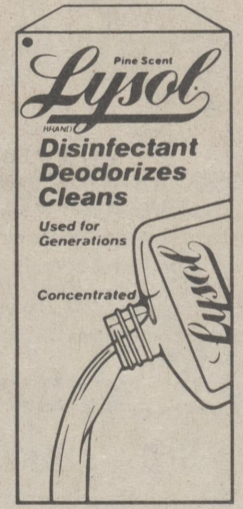
\$1.69



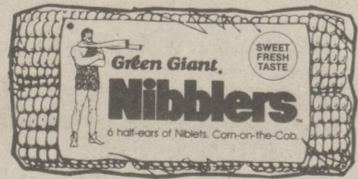
"Perk"
Floor Cleaner
For No Wax Floors
22 oz. Container
\$1.79



Lysol Liquid
Disinfectant
12 oz. Bottle
Reg. or
Pine Scent
\$1.69



Hanover Frozen
Fordhook Limas
16 oz. Bag
\$1.19



Green Giant "Nibblers"
Corn on Cob
Pkg. of 6 Ears
99¢



Kraft American Cheese Singles
White or Yellow
16 Slices-12 oz. Pkg.
\$1.69



Breyer's
All-Natural
Ice Cream
1/2 Gal. Pkg.
\$2.99

Herr's Nacho Corn Chips
or Nacho Cheese
Reg. \$1.39 Pkg. ONLY 99¢

Herr's Corn Chips
Reg. \$1.19 Pkg. ONLY 89¢



Golden Ripe Bananas
35¢ lb.

Firm Ripe Tomatoes
99¢ lb.



Quillen's Dairy Market

We reserve the right to limit quantities.

For your shopping convenience, we are open every day of the year!

3/21-22-23

Phone 398-8768

DORMAN STREET
HARRINGTON, DE.