

Felton swears in new council members

by Lola O'Day
 FELTON. President Egler opened the Felton Town meeting and proceeded with the swearing in of new council members. They are Patsy Rawding, treasurer, Monica LeBlanc, secretary and Ron Stumpf, councilman.
 The Police Commissioner for next year will be William Myers Jr. and Street Commissioner is Ron Stumpf. Health Commissioner is Charlotte Stevenson, Water Commissioner, Joe Gannon. Mary Ann Stumpf will be Liason between the Town of Felton and state government for keeping records.
 It was reported that a brown dog is running at large in town. It is a very aggressive animal and will bite, as reported several persons have already been bitten by the dog. The Kent County SPCA has been called with no results. The towns people have notified the administrator, Mr. Caldwell, from

Wilmington. The board members of Felton are also checking out the situation of the dangerous dog and will be trying to find a solution to the problem.
 Mrs. Joyce Jefferson was present and held a discussion on the Levy Court wanting to discontinue the Bookmobile services. The Division of Libraries does not want to administer the Bookmobile any longer. There will be a public meeting held on March 15 to discuss the matter. Felton will be very much deprived if we lose it, as Felton used the service more than other towns. It was decided at the council meeting to forward a letter to Levy Court as to the plans to keep the mobile service.
 Mr. Steve Childers was present to bring before the Council for the interest of the Felton Historical Society, desiring the old town hall. It was decided that members of the historical

society would observe the old town hall, inside and outside for inspection of what will be needed and inform council on the conditions of the building, hopefully in a month.
 Councilman Myers announced the leak on Main Street has been repaired. Councilman Myers also presented a Base Zoning map of the Town of Felton, showing lands of Felton to be zoned. Councilman Myers had 4 permits to present for approval. They were for properties located at 19 E. High, 113 West High, Kerry Circle, lot #40, and Kerry Circle, lot #38. Also John & Martha Groliski, Kerry Circle, lot #27 for swimming pool. All were approved for acceptance as submitted pending Planning & Zoning approval. Plans for a subdivision on lands formerly of John Green on West High St. was submitted. The houses will range from mid- to high \$60's. Approximately 13 homes

are to be built and the plans are to be finalized next month.
 Clarence Hurd brought before council that the Odd Fellows have removed the damaged monument from the Town Park for repair. In other business Mr. Hurd informed council that an appointment has been set for March 12, at 10 a.m. for council members to go to Clayton to check the police car there for the town of Felton.
 Mr. Hurd was also authorized by the council to check the police mail.
 Pat Rawding, treasurer, would like to have picked up for her use, a new tax list from the county, needed to prepare the budget by June 20.
 There will be an Executive meeting held on March 28, 1988, at the Town Hall, Felton, at 7 p.m.
 The meeting was adjourned at 9:50 p.m.



On Monday night, March 7, three new Felton Town Council members were sworn into office. They are (L-R): Ron Stumpf, Monica LeBlanc, and Patsy Rawding. Photo by Don Mitchell.

01/20/89 NCO 4 925
 Hoag & Sons
 Hoag & Sons Book Bindery
 127 R R Ave
 Springport MI 49284

Harrington Journal

Seventy-Third Year, No. 38, March 9, 1988

Published Every Wednesday at Harrington, Delaware

Twenty-Five Cents Per Copy

Dates and entertainment set for State Fair '88

HARRINGTON — Officials at the Delaware State Fair have announced the dates and entertainment line-up for the 69th Annual State Fair. The Fair will run ten days July 21-30. The True-Value Country Showdown will open Free Preview Night on Thursday, July 21, hosted by Ronnie McDowell. Willie Nelson and Family will return on Saturday, July 23, for one show. Gloria Estefan and Miami Sound Machine and Reba McEntire will perform two shows on July 29 and 30 respectively.

The Acme Markets Motor Sports Series will return to the Fair on Friday, July 22 and Wednesday, July 27. Over 100 cars will compete in several classes for cash and points during those two days. Acme Markets will also sponsor the two giant demolition derbies on both Saturday afternoons of the Fair.

Children's Day, July 26, will feature the Hollywood Stunt World for two performances underwritten by Sussex Trust. Blue Cross/Blue Shield of Delaware will present the Serendipity Singers on Governor's Day Senior Citizen's Day Thursday, July 28. The Cowtown Rodeo will produce the Fair's PRCA sanctioned rodeo on Monday, July 25. Fair officials are still in negotiation for Sunday, July 24, and will announce that act later this spring.

The Willie Nelson show last year registered the first official sell-out in the history of the Fair. The demand for tickets far exceeded the Fair's seating capacity, so, Nelson was contracted to return in 1988. Part of Nelson's success may be tied to his membership as one of country music's original outlaws. Nelson, Waylon Jennings and Kris Kristofferson - shunned by the Nashville establishment began recording their unique sound in Texas.

Many successful entertainers can point to one song that helped launch their careers. For Ronnie McDowell, that song was "The King Is Gone", a tribute to the late Elvis Presley. The record sold over one million copies and catapulted McDowell from relative anonymity to instant

recognition. In the years since that release, McDowell has made his reputation with a string of peppy and upbeat musical tributes to women, beginning with "Older Woman", and continuing with three others and probably his best known "In A New York Minute".

McDowell will host the regional finals of the True-Value Country Showdown on Thursday, July 21.

Miami Sound Machine



State Fair Headliners Willie Nelson (above) Reba McEntire (left) Ronnie McDowell (right)

Contestants from a three state area will perform in Harrington for cash, prizes and a chance to advance to the regional finals of the Showdown. The ultimate winner of the contest will receive a one year recording contract and \$50,000.00 in cash. The Country Showdown is in its seventh year and is the largest country music contest in the world.

Hollywood Stunt World



For Reba McEntire, her entrance into the big-league of country music has served as a statement for the industry. Her recent tour has taken the daughter of an Oklahoma rancher, to areas of the country that have thought not to embrace the Nashville style music.

Last October, McEntire took the stage at New York's Carnegie Hall before a sell-out crowd and left people feeling good about her brand of music. The fall tour registered sell-out or near sell-out crowds in the metropolitan northeast. McEntire's unique delivery is able to blend the style of traditional country with the modern day sound. Her ability to cross over and attract non-country fans may be the reason for the successful fall tour. "We like to go into areas that are perceived as non-country markets and change that mystique," said McEntire. McEntire will perform two shows at 7:30 and 9:30 p.m. on July 30.

In 1986, Gloria Estefan and Miami Sound Machine came swirling out of Florida with the power of a Force Ten gale. At the eye of the storm were three Top 10 singles from their Epic Record Album, "Primitive Love".

International success was not new to Miami Sound Machine. Since their formation in 1976, the group has built a huge following in Europe, Asia and Latin America. They have played to SRO audiences in the world's largest amphitheatres and have earned gold and platinum records worldwide. They began their first tour in the United States in 1986. Today, the group has proven itself with its latin sound and continues to place new singles on the charts. Estefan and Miami Sound Machine will perform two shows at 7:30 and 9:30 p.m. on July 29.

This year, the Delaware State Fair will increase its free entertainment areas from two to three. The Fair will feature two stage areas and racing pigs at the third area.

For more information and a ticket order form, send a self addressed stamped envelope to: The Delaware State Fair, P.O. Box 28, Harrington, DE 19952, or call the Fair at 302-398-3269.

Citizens turn out for public forum on proposed referendum

FELTON. The second of three public forums was held last Thursday at Lake Forest North Elementary School.
 The scene was the elementary cafeteria where topics of "how much income do you have now," asked Mrs. Joyce Jefferson of Felton.

"The question is a complex one," said board member H. Earl Roberts. "We have money from the discretionary fund—and the state will give the district equalization money," said a member of the Department of Public Instruction.
 Mr. Roberts added that "...\$718,318 is budgeted but we may not receive all this money. Because it (budget) hinges on whether residents of the district pay their taxes."

The question of how revenues are raised for the district was answered by tax revenues on real estate and capitation tax. The representative from the Department of Public Instruction indicated that revenues this year from real estate tax and capitation tax amounted to \$94 million with \$1 million of that from capitation tax.
 Mike Stalling who is part of the farming community in Lake Forest indicated that real estate taxes were not

the fairest way to raise revenues to support the needs of the school district. "I think the district should look into the possibility of raising revenues from an income tax and this way the burden would not be on the backs of the elderly and senior citizens of this district," he said.

Board member S. Michael Thompson indicated that 70% of the teachers salaries are paid by the state income taxes. "...and I feel this is the fairest way to handle the tax question".

Stalling continued by saying "farmers have not done very well in the past two years and it looks like it might be three years in a row of bad times for them, and the senior citizens are on fixed incomes...so the best thing to do would be to try other ways to raise revenues".

John Manter, the citizen who co-chairs these meetings with attorney David Pryor indicated "...that this is a good idea, but when you start talking to your representatives about the change they begin to find something else to do right away. This has become a political football...because the political power is upstate so what it means is that we must

speak to our local representatives about this". Manter said he had been given the picture that since we have not passed the referendum the district does not care what happens to the school situation. "But I think we do care and it is evident by the attendance at these meetings", said Mr. Manter.

Mrs. Paula Davis who advocated a more positive attitude and direction asked if this citizens group had a formula for a better education process faced with budget cuts. Mr. Pryor and Mr. Manter added that there was no set plan at this time "...but this is why we are holding these meetings to get the citizens involved. We want the people to respond", they said. Mrs. Davis added that she has been here for two years and the theme she hears is "more tearing down than building up. What we need is a positive approach. The school board members are elected officials merely trying to do their job...so let's let them do it".

The next public meeting will be March 17th from 7 to 9 p.m. at Lake Forest East Elementary gym in Frederica.

Industrial development main topic for public meeting

by Bonnie Algier-Mitchell
 HARRINGTON. A scheduled public meeting between the Harrington Council, the Delaware Development office and former city manager George Volenik has been set for this Thursday, March 10th at 7:30 p.m. at City Hall.
 The council, through Councilman James Temple had requested a meeting with representatives of the Delaware Development office and George Volenik for a status report on the new companies slated to come to Harrington.

One company, Port Lumber Company, is already occupying land it purchased last year from William Simpson. The portion of the Thistlewood farm on County Road 432 is supposed to contain approximately 52 acres. Port Lumber company deals in salt treated lumber. The treatment of

lumber by this process could possibly be poisonous and hazardous to health. Another company is slated to occupy the other half of the Simpson farm. That land has not been annexed into the city.

Running in connection with this industrial development park is a new and improved water system for that area which is estimated to cost \$475,000. Originally this system was to run south on US 13 to the Killen Grain road, west on the Killen Grain road to East Street and north on East Street to Clark Street. The Delaware State Fairgrounds was to be connected to this system. The idea being that the two systems (city of Harrington and the Fairgrounds) would serve to improve both entities.

The system was approved for extension across US 13 east to the Simpson farm along the railroad thus,

making another loop there.

Mayor Farrow said recently when the March 10th meeting was set that he "...was interested in meeting representatives of these companies," and asked Mr. Volenik and the Delaware Development office "if a biographical sketch could be provided on or before the March 10th meeting." He has been assured that such sketch would be provided.

Mayor Farrow was joined by Councilman Temple in an effort to show good faith in dealing with these concerns. "I would also like to know if our volunteer fire company should have talks with representatives of these companies if we are dealing with hazardous materials. It may or may not be something of concern, but I believe the question needs an answer", Mayor Farrow said.

84 Lumber opens store in Georgetown

GEORGETOWN — Do-It-Yourselfers, contractors, remodelers and cost-conscious buyers take heart! 84 LUMBER, the nation's largest privately-owned building supplies retailer, announces that the Grand Opening of its store in Georgetown will

take place Thursday, March 10th. This gleaming new store is located along Route 113 North. 84 stocks a complete line of lumber and home improvement products displayed in a brightly-lit showroom that lets you envision the products you use in your

home. "Not only can we accommodate homeowners in each step of building and remodeling, but we are fully equipped to provide the service and

(Continued on page 4)

SHORT TAKES

come fly a kite april 1 at cape henlopen state park

Dig your favorite kite out of the closet and let it catch gusts of ocean breeze at Cape Henlopen State Park. Friday, April 1st marks the 20th Annual Great Delaware Kite Festival, co-sponsored by the Division of Parks and Recreation and the Lewes Chamber of Commerce.

The activity begins at 10 a.m. and runs until mid-afternoon. Ben Franklin, the world's most famous kite flyer, will be offering assistance and showing off his own kite flying ability between 10 a.m. and noon. Clowns and magicians will also be on hand to delight all ages.

Store-bought kites will be judged for the flyer's ability, while homemade kites will be judged for the prettiest and most unusual kites. All entrants must register between 10 a.m. and noon.

Ribbons and prizes will be awarded. Refreshments and T-shirts will also be available.

For more information call the Lewes Chamber of Commerce at (302) 645-8073.

Postal Service launches "E" stamp

The United States Postal Service has unveiled the design of a nondenominated "E" stamp which will be issued to correspond with a new domestic First-Class postage rate expected to be implemented this spring.

The "E" stamp, the fifth nondenominated stamp produced by the Postal Service, breaks tradition from previous issues by featuring a dramatic and colorful view of the Earth from outer space. Blue oceans and a burnt-orange North America peak through a tapestry of white clouds covering the planet. Outer space creates a spectacular backdrop of layered colors. A center band of brilliant yellow gradually yields to red and finally forms a frame of blue, punctuated by small white stars.

A white letter "E" looms in the upper left corner of the image, paralleled at lower left by the word, "Earth." "Domestic" appears in red beside "USA," in blue, on a white background below the stamp image.

Designed by Robert T. McCall, veteran space stamp designer from Paradise Valley, Arizona, the stamp is taken from an original painting based on composite photographs provided by the National Aeronautic Space Administration (NASA). The subject, Earth, was chosen to correspond with the letter "E."

The stamps were produced over the last three years and stored pending their use with a future postage rate change. As with the "A," "B," "C," and "D" items, the issuance of the "E" stamps will ensure that adequate supplies of First-Class postage are available to the mailing public until denominated products can be produced.

The Postal Service emphasized that the "E" stamps are for use within the United States only. Their use is prohibited on international mail, which requires denominated postage.

In addition to the nondenominated issues, an ample supply of one-, two- and three-cent stamps will be available for use by customers to meet the new First-Class rates.

The "E" stamps will appear in panes of 100; coils of 100, 500 and 3,000; and booklets of 20. First day of issue and ordering information will be announced at a later date.

The Postal Service will not issue nondenominated postal cards or envelopes in the "E" series, opting to create denominated versions once rates are established. However, the agency will issue a nondenominated Official Mail stamp and U.S. Savings Bond envelope. Information about these products will be provided in future issues of *Stamp News USA*.

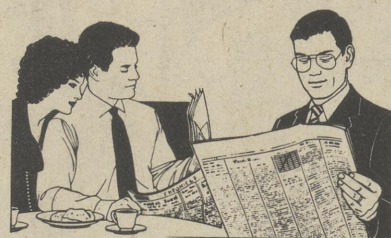
Greenwood Public Library

- March 9--Story time. 10 a.m.
- March 10--Film "Another Fine Mess". 4 p.m.
- March 14--Tax Preparation Help. 1 p.m. Call the library for more information.
- March 15--Free Blood Pressure Clinic. 7 p.m.
- March 16--Story time. 10 a.m. Refunding time. 12:30 p.m.
- March 17--Films "Whistle for Willie" and "Shoemaker and the Elves". 4 p.m.
- March 19--Coloring entries returned.
- March 23--Story time. 10 a.m.
- March 24--Films "Paddington Bear" and "Felix goes Hollywood." 4 p.m.
- March 29--Special Easter Program at VFW. 6:30 p.m.
- March 30--Story time. 10 a.m.

- March 31--Films "Paul Bunyan" and "Child's Garden of Verse." 4 p.m.
- On March 29 Dorothy Furgis, Sussex County children's librarian will present a special Easter program for all the family at the Greenwood VFW Posthome at 6:30 p.m. This program is intended for all the family and will offer all a feeling for the season.

Join the Friends of the Greenwood Library! If you are interested in the Greenwood Library you are urged to contact Mrs. Charles Elliott, Mrs. Margaret Pusey or call the library for more information. Your interest and support are greatly needed at this time as we consider building a new library for our community.

Advertise in The Harrington Journal 398-3206



Felton flea market will feature country & western music

by William T. Ficka

The Diamond State Flea Market opening in Felton next Wednesday has something different, possibly unique, for flea markets—Country and Western music.

The site of the new flea market is the old Highway 13 Drive-In Movie in Felton. It will be open on Wednesdays, Saturdays and Sundays. The live entertainment will be featured every Saturday between noon and 5 p.m.

Jim Evins, of Farmington and Don McAbee, of Camden-Wyoming, have given an imaginative twist to the hawking of the sundry items that will be for sale at the new flea market. While the bargain hunters are searching through the hundreds of items on sale, they will be entertained by top-flight Country and Western entertainers on the outdoor stage.

"We're putting in a hundred tables to begin with," said McAbee. "We hope to have them all rented by the time the warm weather arrives. We'll add more tables as we need them," he added.

Rental spaces will be available. Overnight parking is available for campers and motor homes and dealers are welcome to stay overnight. Restrooms and a snack bar serving

sandwiches and soft drinks will be open during market hours. The market will open at 7 a.m. and continue until darkness. It will be in operation from March 16 through December 24, according to McAbee.

"We have sixty dealers lined up for opening day, next Wednesday. But how many show up will all depend on the weather," said Evins.

"I hope the weather is good, especially for the first weekend," he added.

"The restrooms will be clean and modern. This is very important to the dealers and the shoppers," Evins said. Among the 60 dealers already booked will be those dealing in new and used tools, used books, cassettes and record albums, ceramics, collectibles, clothes, jewelry, radios, watches, video cassettes, dolls, antiques, and an assortment of bric-a-brac, according to Evins.

Evins and McAbee are negotiating with top country talent for the Saturday live entertainment, but couldn't mention any names until the negotiations are complete.

The old Highway 13 Drive-In Movie, where the flea market is located, is on U.S. Highway 13 on the southbound lane, one mile north of Felton.

Delaware State Police graduates 55th recruit class

The Delaware State Police will hold graduation ceremonies for the 55th Delaware State Police Training Class on Sunday, March 13, 1988 at Delaware State College Education Humanities building in Dover at 2:00 p.m.

Graduation ceremonies complete the final step in a twenty-four week training process which includes extensive classroom study and field training in preparation for the demands of police work.

The keynote address for the ceremonies will be delivered by the

Honorable Governor Michael N. Castle.

The presentation of diplomas and badges will be made by the Honorable Governor Castle, the Honorable Edward J. Steiner, Secretary, Department of Public Safety, Colonel Clifford M. Graviet, Superintendent, Delaware State Police and Captain Robert Walls, Director of Training and Administrator for the Council on Police Training.

Local recruit and his assignment is: Charles R. Mullett, Felton, Troop #5.

Harrington Public Library

The Harrington Public Library, located at 31 Commerce Street, is open Monday & Tuesday-1 to 9 p.m.; Wednesday-1 to 6 p.m.; and Thursday & Friday-11 a.m. to 6 p.m.

Coming Events: March 21--Meeting, Friends of the Harrington Public Library at 7:30 in the Library.

March 9, 7:00 p.m.--Reading Some American Classics. The fourth book in the series, *Cat On A Hot Tin Roof* by Tennessee Williams will be presented. The discussion will be led by K.B. Brannon of Brandywine College. The last program in the series, *Ethan Frome* by Edith Wharton, will be presented March 23. Discussion leader will be Cary Halladay of the University of Maryland. This series is free and open

to the public. All programs are held in the meeting room at the Harrington City Hall, 110 Center St. To register and receive a book, stop by the library or phone 398-4647 for information.

March 8-Craft Night at 7:30 p.m. Make an Easter Bunny jelly bean dispenser. Small fee for materials, phone 398-4647 to register. Instructor is Barbara Page of the Craft Cottage.

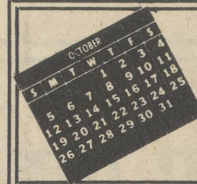
Special Notice--Storytime will now be held on Wednesday afternoons at 1:30. The Harrington Public Library is pleased to welcome their new Children's Program Co-Ordinator, Donna Cohee. The Harrington Library will share Ms. Cohee's services with the Smyrna Public Library. This position is funded by an LSCA Title I Grant.

Crime Stoppers

Police are still seeking the hit and run vehicle that hospitalized a 64 year old woman a week before Christmas. She was driving south on U.S. route 13 at 9:30 p.m. on Thursday, December 17. A half mile south of the intersection of route 896, or Summit Bridge road, at Blackbird, her vehicle was struck in the left rear by a large truck and sent out of control, causing her vehicle to leave the highway and ram a house. The truck continued south without stopping. The

woman sustained a broken leg and wrist. The truck may have had damage to its right front with possible traces of red or maroon paint on the bumper.

If you have any information on this or any other crime please call 1-800-TIP-3333, Monday through Friday between the hours of 9:00 a.m. and 5:00 p.m. Up to \$1,000 reward for publicized or unpublicized felonies. You do not have to reveal your name.



Community Calendar

MARCH 9--Capital City Business and Professional Women dinner meeting, 6:30 p.m. Sheraton Inn. Emphasis on Women helping Women. Open to interested career women. Call Renata Irwin-Smith, membership chair 697-1234 or 335-5498.

MARCH 10--The Wesley College Cultural Arts Series will present mezzo-soprano Trudy Weaver and baritone John Arthur Miller, of New York City, in concert Thursday, at 8 p.m. in the Wells Theatre. Pianist Vernon de Tar will be the accompanist. The event is free and open to the public.

The program at Wesley will include songs and duets by Samuel Barber, Ravel, and Ralph Vaughan Williams, French and Italian songs and excerpts from Mozart operas. The arts series is partially funded by a grant from The Delaware State Arts Council.

MARCH 10, 11, 12--The Lake Forest High School will present the musical "Little Shop of Horrors". The play will begin at 7:30 p.m. at the Lake Forest High School Auditorium. For more information and/or tickets call 284-9291.

MARCH 11--Free Blood Pressure Screening for Hypertension, Friday, 5:30-7:30 p.m. at Milford Library, 214 S. Walnut Street, Milford, DE.

MARCH 12--The Harrington Senior Center will hold their Annual Spring Bazaar on Saturday from 10 a.m. to 2 p.m. Arts/Crafts, Ceramics, Baked Goods, White Elephant, Card Sales are planned. Luncheon will be available from 11 a.m. til 1 p.m. Come out and browse.

MARCH 13--Tryouts for a Kids Kabaret sponsored by the Possum Point Players will be held Sunday at 7 p.m. at Possum Hall in Georgetown.

Kids Kabaret is an hour-long show of song and dance by young people aged 6 to 16 which will be presented several times to young and family audiences.

For more information call Marj Eckerd at 539-8000 day or 732-9214 evenings.

MARCH 15--Free Blood Pressure Screening for Hypertension, Tuesday, 5:30-7:30 p.m. at Harrington Library, 31 Commerce St., Harrington, DE.

MARCH 16--Newcomers Club of Dover, will hold a Craft Auction-Fashion Show, a Dessert Buffet beginning at 6 p.m. and Fashion Show at 7 p.m. on Wednesday at Boscov's. Tickets are available at Victoria's Family Tree Speciality Shop, 150 S. Bradford Street, Dover. For further information call 736-6990. Proceeds will benefit the Kent Orthopedic School and the John S. Charlton School.

MARCH 16--Free Blood Pressure Screening for Hypertension, 5-6:30 p.m. at Milford State Service Center, 11-13 Church St., Milford, DE.

MARCH 18, 19, 25, 26 & 27--The Possum Point Players present their annual spring musical, "Fiddler On the Roof", at the DT&CC Theatre, Georgetown.

THIRD SUNDAY OF EACH MONTH -- The Harrington Historical Society Museum, located on Fleming Street in Harrington will be open on the third Sunday of each month. The hours are 2 to 4 p.m.

MARCH 19--The Kent-Sussex Council of the Navy League of the United States will hold a membership dinner meeting on Saturday at Geyer's Restaurant in Milford. The dinner will begin at 5:30 p.m. in the North Dining Room. A guest speaker is planned. For more information contact Ron Lawrence 422-9054 or Ron Martz 227-2041.

MARCH 19--Saint Patrick's Dance at the Farmington Fire Hall on March 19, from 9 p.m. to 1 a.m. BYOB. D.J. David Shainner. Benefit the Farmington Fire Hall.

MARCH 19--The Burrsville Ruritan Club will hold an auction on Saturday, March 19th at Messick's Community Building on Vernon Road in Harrington. The auction will begin at 7 p.m. Cakes, pies, chickens & numerous other items will be auctioned.

MARCH 19--Felton Fire Co. Annual Dinner. Fried Oysters, chicken salad & dumplings, including dessert. Saturday, serving begins at 2 p.m. in the firehouse. Benefit the Felton Fire Company. Family Style & Dinners to go.

MARCH 20 -- A Breakfast, sponsored by the Kent and Sussex Chapter of the Sunshine Foundation will be held on March 20, 1988 from 7 a.m. to 1 p.m. at the Milford Elks Lodge in Milford. Admission.

MARCH 25, 26 & 27 -- William Shakespears' "The Taming of the Shrew" is being presented at The Everett Theatre in Middletown March 25, 26 and 27. Friday and Saturday evenings at 8 p.m. - Saturday's performance is a matinee at 2 p.m. Admission: Performers and staff come from a wide area of the state to produce this classic play. For information call 834-5100.

MARCH 26 & 27 -- The Wilmington and Western Railroad, in conjunction with Peter Cottontail, will celebrate the Easter season on March 26 and 27 with the Easter Bunny Express. The three-hour event includes a round-trip ride from Greenbank Station (Routes 2 & 41) to Ashland Nature Center hosted by the white, furry guy with the large pink ears. At Ashland, center guides will give young passengers and their parents a short presentation on the natural history of hares, followed by an Easter Egg Hunt. The train departs the station at 1:00 p.m. both days.

For information about rates and to make reservations, call (302) 999-9008. Owned and operated by Historic Red Clay Valley, Inc., the Wilmington and Western Railroad is an all-volunteer organization. Fares charged by the railroad support its operations and maintenance.

MARCH 27 -- A Basketball Game, sponsored by the Kent and Sussex Chapter of the Sunshine Foundation, will be held on March 27, 1988 at 7:30 p.m. till, at the Milford Middle School Gym. Teams playing will be the "Sunshine All Stars" vs. the WMDT TV All Stars. Admission.

APRIL 11 -- There will be no March dinner/meeting of the "Heartbeats" Chapter of the Kent County Division of the American Heart Association of Delaware. There will be a dinner/meeting on Monday, April 11, 6:00 p.m. at Bonanza Restaurant, Dover. Mrs. Doris Hicks, Seafood Technology Specialist at the University of Delaware College of Marine Studies-Seagrant College program in Lewes, De. will present the program and speak on "All You Ever Wanted To Know About Seafood." Members, family and friends are invited. For more information call the Heart office at 734-9321.

APRIL 9--The Delaware Agricultural Museum's annual fundraising auction is scheduled for Saturday, at 10 a.m. The museum has already received many donations for the auction including a prize-winning handwoven coverlet. Call the museum at 734-1618 to consult about donations and arrange for pick up.

MAY 13 & 14--The First State Chapter of Professional Secretaries, International will host the 34th Annual Delaware-Maryland-District of Columbia Division Meeting at the Christiana Hilton Inn, Newark, Delaware.

All secretaries are invited to attend the seminar, special Friday night event and "Secretary of the Year" luncheon. Registration deadline is March 15, 1988. For more information, contact Sarah B. Evans, CPS, 736-4271 or 335-4011.

CORRECTIONS

Any corrections to be made must be called from 8 a.m. to 9 a.m. the day after your ad appears. One (1) extra insertion will be made at no charge for an error not the fault of the advertiser.

The Harrington Journal WILL NOT be responsible for more than one (1) insertion.

HARRINGTON JOURNAL

HARRY G. FARROW, JR., Editor & Publisher USPS-235940

ANNE PALADINO, General Manager

THE HARRINGTON JOURNAL (USPS-235940) is published every Wednesday by THE HARRINGTON JOURNAL, P.O. Box 239, 19 Commerce St., Harrington, DE 19952. Second-Class paid at Dover, DE 19901-9998. Office of Original Entry Harrington, DE 19952-9998.

POSTMASTER: Send address change to THE HARRINGTON JOURNAL, P.O. Box 239, Harrington, DE 19952. \$12.00 per year IN STATE. \$15.50 per year. OUT OF STATE.

Office of Publication 17 Commerce Street Harrington, DE 19902 1-302-398-3206

BUSINESS DIRECTORY		
CLEANERS 3-23 Capitol Cleaners & Launderers, Inc. Featuring Adjust-A-Draps Cleaning process & hem length GUARANTEED Take down and Rehang service. 674-0500 DOVER, DE	SERVICE 3-16 THE PARTY ELEPHANT Personalized Gifts for Children Greentree Village Shopping Center - Rt. 8 Dover, DE 19901 The "Fun-est" Store in Town! 678-3110	FUEL OIL 3-23 Peninsula Oil Co. Fuel Oil, Kerosene, Gasoline & Burner Service •24-hr. service for regular customers •Radio dispatched truck •Automatic delivery of oil •Level payment plans available Shaw Ave. & Rt. 13 Harrington, DE 398-8344
EQUIPMENT TF TAYLOR & MESSICK, INC. JOHN DEERE FARM EQUIPMENT-LAWN & GARDEN EQUIPMENT Sales and Service by Two-Way Radio Phone 398-3729 Harrington, DE	HOME SALES 5-18-88 JOHN K. STARKE RD 1, BOX 460 NLH FREDERICA, DE 19946 OFF.: (302) 335-4000 RES.: (302) 335-3727 INTERSECTION OF U.S. 113 & 113A	MASONRY 3-9 DANCON MASONRY Brick-Concrete-Block No job too small 697-3697
SERVICE 3-16 COLLINS PLUMBING & HEATING BACKHOE SERVICE (302) 398-8877 Smith Avenue Harrington, Delaware 19952	SERVICE 3-16 Ed Grimm •Septic•Wells Installed• Septic Design•Perc Tests 335-3637 or 284-8797	SERVICE 3-30 FIRST STATE COINS PAYING HIGHEST PRICES for silver or gold coins, gold jewelry, wedding bands, class rings, diamonds, dental gold, sterling silver items. Also buying Hummels, pocket watches, stamp collections. (302) 734-7776
REAL ESTATE FARROW REALTY 17 Commerce St. Harrington, DE 398-3455	SEPTIC 3-16 EDWARD GRIMM •Septic & Well •Land Cleared•Basements dug •Mobile Home Footers Foundation•Perc test & Septic design 335-3637 or 284-8797	HOME SUPPLIES 3-30 Woodside Surplus Sales Lumber, Windows, Siding, Doors, Molding, Plywood, Roofing, Insulation, Refinishing, Paneling, Everything for the Builder & Homeowner - 1/4 mi. south of Woodside Traffic Light on S. Bound Lane of U.S. 13. WEEKDAYS 8-5 SAT. 8-1 284-4134

NOTICE

Lot owners of the Hollywood Cemetery are requested to remove all Christmas decorations from their lots before March 15, 1988.
213-9

Thinking About Running...
YOUR OWN BUSINESS?

you and give you sound financial advice—before and after your loan is approved. To get things running your way, come in or call us today.

If you want to open a new business or expand your present business, talk to your personal banker at The Peoples Bank of Harrington about a small business loan. He or she will discuss the options available to

The Peoples Bank of Harrington
Harrington's Only Full Service Bank
Clark & Hanley Streets
Harrington, DE
398-3256
Member FDIC

Education

Lake Forest High School CTBS testing

Officials at Lake Forest High School will be administering the California Test of Basic Skills on Tuesday and Wednesday, March 15 and 16. Students in grades nine, ten and eleven will be tested with the eleventh grades results being part of the Delaware Department of Public Instruction statewide testing program. A makeup day for juniors only will be offered on Thursday, March 17.

Test results from the CTBS are one of the measures used to evaluate a student's progress and help to ensure proper placement. Parents are urged to stress the importance of attending

school on these test days. Students should try to get a good night's sleep on the evenings prior, should eat a good breakfast, and try to relax during the testing.

Although members of the senior class will not be involved in the two mornings of testing, their attendance on those days will be important. An important meeting of all seniors regarding graduation will be held on the morning of the 15th. On Wed., the 16th, a group will be making a presentation to the seniors. Any questions concerning the test days can be addressed by calling 284-9291.



On February 4, 1988, Lori Magee of Woodridge Business Institute in Salisbury did a "Dress for Success" presentation for the Lake Forest Chapter of Jobs for Delaware Graduates. The presentation shows students how to dress for the professional world.



Three of the members of the Children's Repertory Company (L-R): Vicki Town, Mindy Myers, and Ralph Satterthwaite. Photo by Don Mitchell.

A "Bubylonian Encounter" at Lake Forest East

by Don Mitchell
 FEDERICA—The "Bubylonian Encounter" is a humorous and sensitive play about touch, good touch and bad touch. Good touch is when a child is held, cuddled and kissed in a loving manner. Bad touch is when someone, including a friend, relative or even a parent, touches them somewhere it makes the child feel uncomfortable. This is child abuse and they should tell someone.

The play is about Bub, a visitor from the planet Bubbylonia. The Bubbylonians live in an invisible bubble & know nothing of the sense of touch. With the help of a couple of earth friends Bub breaks out of his bubble and thus, learns about touching. He learns how touching can be good, such as a friend's warm handshake and kissing. He also learns about how someone's touch can become too personal and make you feel uncomfortable and that if you tell someone you can get help to make them stop bothering you. This is a lesson every child should learn and know what to do about it.

The Children's Repertory Company presented this play at Lake Forest East Elementary School in Frederica on Monday. Their goal is to entertain and educate in a way to which young children can relate. The company is a Drexel Hill, Pa. based professional touring company dedicated to helping children cope with the ordeals of life, whether it's this play, dealing with someone touching them in or on private places of their body and how to get help, or their play "Whisper Down The Lane", a play dealing with

grieving and death. According to Ralph Satterthwaite, one of the players that was at East Elementary, they are planning to add a program to help kids cope with divorce, a subject that can be as shattering an experience as child abuse.

The cast of characters that put on the play for the students of Lake Forest East Elementary are a group of loving, caring people who love the job of working with children. They deserve the admiration of parents. It is nice to know that in these troubled times there are such people that care about our children and want to help them.

Child abuse and molestation is on the rise, specifically sexual abuse. Thirty to forty percent of all children are abused in one way or another before they are 18 years old. The average age of abused children is 5 years old, and 90% of these children know the offender.

This performance was sponsored by the Delaware Department of Services for Children, Youth and Families. Mr. Richard Seyler, principal of Lake Forest East Elementary stated that they had been on a waiting list for the program and someone cancelled out, enabling the school to get the program earlier than expected. According to Mindy Myers, a member of the troupe, they would put on another play Monday afternoon in the Selbyville Elementary School.

"We believe every child has the right to grow up free from sexual exploitation, won't you help us spread this message," said Mr. Seyler.

Think about this and think about your children.

Delaware educators plan to celebrate "Newspaper in Education Week"

The Diamond State Reading Association is actively endorsing the "Newspaper in Education Week", March 7-11, 1988. NIEW is a project jointly sponsored by the International Reading Association and the American Newspapers Publishers Association Foundation (ANPA). Its primary goal is to foster a lifetime reading habit.

By utilizing the newspaper as a direct application or extension of the learning process, teachers can promote carry-over and reinforcement of a positive and relevant reading habit.

DSRA supports "Newspaper in Education Week" for four reasons. Through the use of the newspaper, students can become better informed and consequently better citizens. Newspapers demonstrate practical applications of skills and concepts covered in the school curriculum. Newspapers update the information contained in textbooks. It will be fun, and "fun" motivates learning. Teachers will be given the chance to explore some teaching approaches and resources which they may not have tried.

In essence, DSRA recognizes NIEW as a project devoted to enhancing the skills and content learned in the classroom through using the newspaper as part of the school's instructional program.

Children do not simply begin to read the newspaper. They need models, such as parents and teachers, who are excited about reading and who share with others what they have read. Delaware teachers whose classrooms participate in NIEW and who actively involve parents will open the worlds of the newspaper to thousands of students. DSRA feels these students will step into tomorrow more adequately prepared to meet the challenges of our everchanging and growing society.



Lake Forest North students and faculty wish Principal Young a speedy recovery after his multiple bypass operation. Photo by David Dill.

TAX TIPS

Requirements For Claiming Business Expenses

Knowing the proper reporting and recordkeeping requirements is essential for those taxpayers who claim business-related travel, transportation, entertainment, and gift expenses, the Internal Revenue Service said.

The primary method of recordkeeping for most of these expenses starts with recording the expenses in an account book, diary, statement of expense, or similar record at or near the time of the expense. These entries must also include the date and location of the business travel or entertainment, the occupation or other information about the person or persons entertained, and the business purpose of incurring the expense, the IRS said. A receipt or similar supporting evidence is required for all lodging expenses and any other expense of \$25 or more.

According to IRS guidelines, all business expenses must be ordinary and necessary in the taxpayer's line of work to be deductible. Reasonable

local transportation expenses such as the cost of driving and maintaining an automobile while on business, excluding any commuting and personal mileage, can be deducted.

For a business-related trip outside the area of their main place of business, taxpayers may be able to deduct expenses such as food and lodging in addition to the costs of transportation. The deduction for meal and entertainment expenses, however, is limited to 80 percent of the taxpayer's expenditures, and the meal or entertainment must either be directly related to, or associated with, the active pur-

Family Labor—IRS Offers Tax Guidelines

Wages paid to a farmer's family members, spouses and children, are tax deductible if there is a true employer-employee relationship, according to

the Internal Revenue Service.

Also, payment must be reasonable in amount. A reasonable wage is what you would pay an unrelated person for the same work. Payments should be periodic—hourly, weekly, monthly, etc.—since it is unlikely that a nonrelated person would work for one or two paychecks per year.

Recordkeeping is vital. The employer may keep the records. Preferably, however, the family employee should keep a timely record of total hours worked. Total hours worked should be submitted periodically to coincide with the established pay period.

Family members must earn their wage. The family member is an employee and must be treated like an employee to establish a deduction on the income tax return. Keeping a record of the hours worked and duties performed helps to substantiate the employee relationship.

Wages paid by a self-employed farmer to the farmer's children are not subject to FICA (social security) tax nor FUTA (unemployment) tax until the child is age 21. All payments after that are subject to FICA and FUTA tax. Payments to a spouse are not subject to FICA or FUTA tax. If the farm is a corporation, then wages paid to any family member, regardless of age or relationship, are subject to FICA and FUTA tax.

In the area of retirement plans, if you have a self-employed Keogh plan, family members who work for you are your employees for purposes of coverage. Any employee who meets minimum coverage requirements generally must be included in the plan. Failure to cover any employee, including a family member, could cause you to lose your Keogh contribution deduction.

In recent years, Individual Retirement Accounts (IRAs) have become available to the farmer. Many have begun compensating their spouses in order to obtain a second IRA deduction. Remember that records must be kept of hours worked and duties performed. The wages must be reasonable and payment should be periodic.

For more information, farmers can get free IRS Publication 225, *Farmer's Tax Guide*, by using the order blank in the tax return package or calling toll-free 1-800-424-3676.



Dover Warehouse Food Market Bay Court Plaza Shopping Center

OPEN—Monday thru Saturday 9 a.m. to 9 p.m.
 Friday 9 a.m. to 10 p.m.
 Sunday 9 a.m. to 7 p.m.

You'll Always Save the Most by Shopping Here First!

UNDER NEW OWNERSHIP

SAVE YOURSELF TIME, TROUBLE and money. Let us take the burden out of tax preparation.

- INDIVIDUAL RETURNS
- ALL STATES
- LONG and SHORT FORMS
- BOOKKEEPING & PAYROLL SERVICES

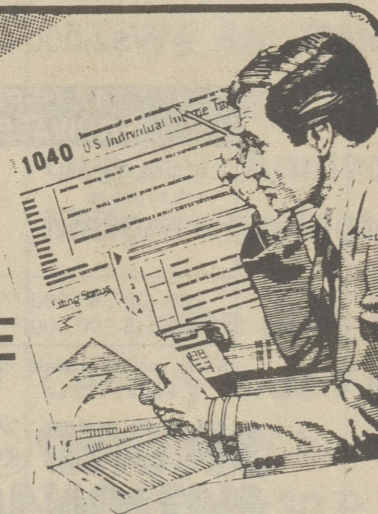
We are professionals in minimizing taxes. Friendly • Quick • Private

Wright & Associates

410 Martin St.
 (Behind Oriental Express)
 678-8543

Richard Clough

Debbie Clough



CENTRAL DELAWARE CHAMBER OF COMMERCE

1988 Spring Home & Trade Show

Friday, Saturday, Sunday
 March 11, 12 & 13
 Blue Hen Mall, Dover

FEATURING THESE PRODUCT AND SERVICE EXHIBITS

<ul style="list-style-type: none"> All Star Satellite Systems B. Gary Scott Realtors Beaulieu Control Cosmetics/Caudie Unit Blood Bank of Delaware, Inc. Broadmeadow School Bundek Water Conditioning C. A. In-Park Sales Callaway Furniture Chem-Seal Clark's Pool & Spa Clements Supply Co. Coldwell Banker/Burns & Ellis Realtors Computerite Corporate Investment International Culligan Delaware Division of Parks & Recreation, Sponsored by The Hub Restaurant Delaware State College Delaware State News Delaware Tech-Terry Campus Diamond Motor Sports Diamond State Post Control Dover Pool & Patio Center E-Z-U's Signs ENCO Easy Use Telephone Directory Emerson & Co., Realtors Excel Business Systems, Inc. Family Heating & Air Conditioning 	<ul style="list-style-type: none"> Fox Pools of Dover, Inc. Guinn Associates, Inc. Happy Hoe Garden Center Holden & Mundy Dodge Hutmal-Buckland Realty, Gallery of Homes IDS Financial Services Intercept Security Systems, Inc. J & J Ceramic Studio J. A. Moore & Sons Construction Co. 	<ul style="list-style-type: none"> J. C. Penney Co., Inc. Kent County Motor Sales Co. Kent General Hospital Kirby Co. of Kent County Lee F. Slaughter Fine Cars, Inc. Martel, Inc. Mary Kay Cosmetics Merrill Lynch Metropolitan Life Insurance Co. Mid-Atlantic Building Products, Inc. 	<ul style="list-style-type: none"> Miller's Lawnmowers, Inc. Modern Gas Ocean Air Systems Paradee Gas Co. Plumbing by Gene Terczek, Inc. Portable Buildings Price Honda Price Leasing Quality Secretarial Services Ray's Plumbing and Heating Rivers Mobile Home Service Sears Roebuck & Co. Sir Speedy Printing Center, Inc. Storer Cable Stripes Unlimited Parking Lot/Driveway Maintenance Superior Sliding T & T Small Engines, Inc. Townsend Bros., Inc. U. L. Harman, Inc. WDOV/WDSB Radio WSEA Warren-Wolfe Associates, Inc. Water World, Inc. Wheel Easy Bicycle Shop Wilmington Savings Fund Society, FSB World Book Childcraft YMCA Your Fuller Brush Distributor 	
<p>OUTTEN BROS., INC.</p> <p>5,000 BTU, Hi-Efficiency Air Conditioner \$350.00 Value</p>	<p>J.C. PENNEY CO., INC.</p> <p>500 Watt Microwave Oven \$200.00 Value</p>	<p>STORER CABLE</p> <p>"Fun-in-the-Sun" Package (Director's Chair, Beach Towel, Duffie Bag & More!) \$75.00 Value</p>	<p>GRAND PRIZE</p> <p>DOVER POOL and patio center, inc.</p> <p>10-Piece Patio Set (Table, 4 Chairs, Bench, Foot Stool, Tea Cart, Umbrella & Stand) \$900.00 Value</p>	<p>FALCON FURNITURE</p> <p>5-Piece Dinette Set \$300.00 Value</p>
<p>WATER WORLD, INC.</p> <p>Deluxe Set of Stotter Ware (Serving Tray, Ice Bucket, Pitcher, 6 Glasses & 30 Matching Napkins) \$75.00 Value</p>	<p>DINNER BELL INN</p> <p>Gift Certificate (Dinner For Two)</p>	<p>Hours: Friday, March 11, 6-9 p.m.; Saturday, March 12, 10 a.m.-9 p.m.; Sunday, March 13, 12-5 p.m.</p> <p>Sponsored by Central Delaware Chamber of Commerce (Space donated by Blue Hen Mall)</p> <p>Blue Hen Mall</p>		

Lake Forest High School Students of the Week



Lake Forest Students of the Week for the week of March 3 are (L-R): Sherri Rau, Ag; Ronica Willey, Home Ec.; Tammy Jackson, Science; Herman Mosley, Student Achievement; Melissa Larimore, Business Ed.; Tammie Lohr, Art; Carl Young, Health & Phys. Ed.; Heather Hare, Drivers Ed.; Elizabeth Phillips, Foreign Lang.; Timothy Shiu, English; Ryan Boehmer, Social Studies; Bill Hill, Mathematics. Missing from the photo: Loren Cohee, Music; and Eddie Davis, Industrial Arts. Photo by David Dill.

84 Lumber opens store in Georgetown

(Continued from page 1)

material needs of builders and contractors", said store manager Mike Kelly.

Georgetown residents can look forward to a great time at the 84 Lumber Grand Opening! It all begins Thursday with a BANG!! The feature attraction is Benny Koske, THE HUMAN BOMB, who blows himself up daily Thursday, Friday and Saturday!!

Also, according to Manager Kelly, "We try to get everyone involved with the world-famous Paul Bunyan Games and 'How To' project clinics. And, of course, everybody LOVES the excitement of the Ford pickup-truck

drawing and the 25 cent hot dogs and 10 cent soft drinks! They're an 84 Lumber tradition." (Sales from the concession stand will benefit the Georgetown Little League.)

The Grand Opening Sale gets underway Thursday, March 10th at 7 a.m. and continues through Sunday, the 13th! All events are FREE to the public.

84 LUMBER opened its first store thirty years ago in the rural village of Eighty Four, PA. Georgetown's new location will be the 365th 84 Lumber store in the nation and the company's 5th outlet in Delaware.

Workshop on drug/alcohol abuse scheduled

Delaware Tech, Terry Campus in cooperation with the Governor's Office on March 16, 1988 will present a FREE workshop to introduce a new program, "Above the Influence".

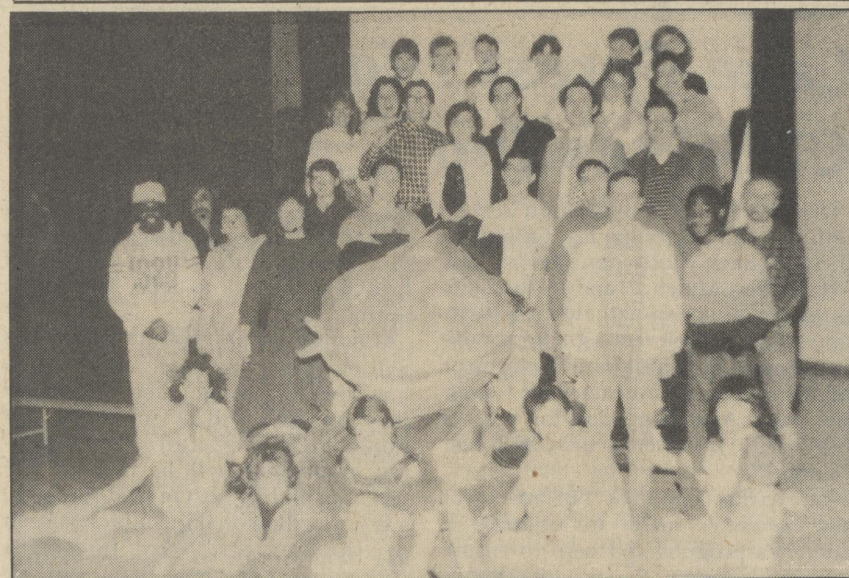
"Above the Influence" is designed to guide and assist the community to organize and work together to prevent drug and alcohol abuse. The workshop will teach ways to communicate about these problems and avoid the denial

that can prevent early intervention. An open, supportive environment, based on facts and awareness, can help us get "above the influence".

The workshop will be held in the Downes Lecture Hall at Delaware Tech, Terry Campus on Denney's Road, from 7 to 10 p.m.

For more information, call Kevin Smith at Delaware Tech, (302) 736-5402.

Lake Forest High School Presents "Little Shop of Horrors"



The cast of the musical "Little Shop of Horrors" are shown here with Audrey II, a very important cast member. The play, sponsored by the Lake Forest S.G.A., will be presented on March 10th, 11th, and 12th at 7:30 p.m. in the School Auditorium. For ticket information call 284-9291. Photo by David Dill.

Students awarded degrees at winter commencement

The University of Delaware conferred more than 800 degrees at its 1988 Winter Commencement exercises, held Sunday, Jan. 3 at Clayton Hall on the University's north campus in Newark. Local students receiving degrees were: Barbara Lee Chaloupka, Bridgeville,

Bachelor of Science in Agriculture degree; and Charles David Harris,

Bridgeville, Bachelor of Civil Engineering degree; Bryan Evans Hughes, Felton, Bachelor of Arts degree.

"Ability Counts" winners selected

The Governor's Committee on Employment of the Handicapped has selected six winners for the Journalism and Poster/Graphics components of the Ability Counts Contest. First Place Winners are Dan Madinadetta, Archmere Academy, and Andre'a Cimini, Padua Academy. Dan's poster and Andre'a's essay were selected as outstanding by contest judges. In addition to a check for \$250, First Place Winners will be awarded a three-day, expense paid trip to Washington, D.C. for themselves and a chaperone. The trip is scheduled for May 4-6 so that Dan and Andre'a can represent the State of Delaware at the national contest of the President's Committee on Employment of the Handicapped. Governor Michael Castle will also honor all winners at a ceremony in his office in mid-April. A final date has not yet been confirmed. Winners for this contest were selected from statewide entries of juniors and seniors in high school. Second and

Third Place Winners respectively in the Poster/Graphics Contest were Robyn Neely, Thomas McKean High School, and Jeff Ritter, Delcastle Technical High School. The journalism contest judges named Karen Iacono, Padua Academy, and DeAnna Scott of Lake Forest High School, as Second and Third Place Winners. Awards of \$200 and \$150 will be presented to these winners during the ceremony at Governor Castle's office.

The Governor's Committee on Employment of the Handicapped would like to thank all high school students who participated in the contest and helped to promote awareness of handicapped citizens. Generous donations by Wilmington Trust, ICI Americas, Inc., Veterans of Foreign Wars of the U.S., The American Legion, Disabled American Veterans, and Delaware Paralyzed Veterans Association, Inc. made the contest possible.

Volunteers needed for rape crisis program

Rape Crisis-CONTACT announces its Spring training course for new volunteers to be held at the Wesley United Methodist Church in Dover. The course will cover the medical, legal and psychological aspects of rape, with practice in communication skills. Starting on Wednesday, April 6, classes will be held every Monday and Wednesday thereafter through May 4. There will also be one Saturday session. Volunteer training is open to anyone (age 18 or older) who has an interest in providing support to victims of sexual assault. Rape Crisis-CONTACT provides telephone counseling, accompaniment (to hospital, police

station, etc.) and short-term support to victims, families and friends of victims. These services are free and confidential, and are now obtained by calling 1-575-1112.

Rape Crisis-CONTACT also presents programs on rape awareness and prevention to church, school and community groups.

If you are interested in becoming a volunteer or requesting a program for your group, please call 422-2078; or write to: Rape Crisis-CONTACT, P.O. Box 61, Milford, DE 19963.

Rape Crisis-CONTACT is a program of CONTACT-Delaware, Inc., a United Way Member Agency.

Ron's Market

Harrington Shopping Center
Harrington, DE

Sale March 7th to March 12th

WINTER HOURS
Mon., Tues. and Wed. 8 a.m. to 8 p.m.
Thurs. and Fri. 8 a.m. to 9 p.m.
Sat. 8 a.m. to 7 p.m. * Sun. 9 a.m. to 5 p.m.

5% Senior Citizens Discount on Thursdays

We accept Food Stamps and WIC Vouchers

398-4314

DOUBLE COUPONS

Windfall of Savings

Bounty Towels 69c	Pampers Plus 99c	Charmin Toilet Tissue - 4's 99c	Red & White Pink Salmon - 15.5 oz. \$2.59	Grand Gourmet Dog Food - 14 oz. - 2 For \$1.29	Light & Fluffy Noodles - 12 oz. - 3 For \$2.00	Kellogg's Frosted Flakes 99c	Joy Dishwashing Detergent - 22 oz. 89c	Lucky Leaf Apple Pie Filling - 22 oz. 89c	San Giorgio Elbow Macaroni - 7 oz. - 4 For \$1.00	Dannon Yogurt - 8 oz. - 2 For 99c	King Sour Dressing - 8 oz. - 2 For 85c	Tropicana Premium Orange Juice - 64 oz. \$2.29	Red & White Butter - 1 lb. Quarters \$1.89	Green Giant French Green Beans In Butter Sauce - 9 oz. - 2 For \$1.00	Morton Pot Pies - 7 oz. - 3 For \$1.00	Mrs. Paul's Crisp Fish Sticks - 11.5 oz. \$1.69	Mrs. Paul's Fish Sticks - 13.6 oz. \$2.89	Mrs. Paul's Fish Sticks - 27.5 oz. \$1.89	Totino's Microwave Pizza - 13.7 oz. \$1.89
Charmin Toilet Tissue - 4's 99c	Red & White Pink Salmon - 15.5 oz. \$2.59	Grand Gourmet Dog Food - 14 oz. - 2 For \$1.29	Light & Fluffy Noodles - 12 oz. - 3 For \$2.00	Kellogg's Frosted Flakes 99c	Joy Dishwashing Detergent - 22 oz. 89c	Lucky Leaf Apple Pie Filling - 22 oz. 89c	San Giorgio Elbow Macaroni - 7 oz. - 4 For \$1.00	Dannon Yogurt - 8 oz. - 2 For 99c	King Sour Dressing - 8 oz. - 2 For 85c	Tropicana Premium Orange Juice - 64 oz. \$2.29	Red & White Butter - 1 lb. Quarters \$1.89	Green Giant French Green Beans In Butter Sauce - 9 oz. - 2 For \$1.00	Morton Pot Pies - 7 oz. - 3 For \$1.00	Mrs. Paul's Crisp Fish Sticks - 11.5 oz. \$1.69	Mrs. Paul's Fish Sticks - 13.6 oz. \$2.89	Mrs. Paul's Fish Sticks - 27.5 oz. \$1.89	Totino's Microwave Pizza - 13.7 oz. \$1.89		



German Bologna 99c lb.
Swiss Cheese \$2.69 lb.
Virginia Baked Ham \$2.49 lb.
Deli Sliced Roast Beef \$3.49 lb.
Potato Salad 65c lb.

Meat

Mash's Corned Beef Brisket \$1.99 lb.
Whole Bottom Round \$1.49 lb.
1/4 Pork Loin \$1.49 lb.
Chicken Drumsticks 49c lb.
Chicken Thighs 49c lb.
Jamestown Sausage Hot/Mild 89c lb.

Oscar Mayer Reg. or Beef Variety Pack (12 oz.) \$2.19
Shoregood Chicken Franks (1 lb. pkg.) 69c
Esskay Reg. or Low Salt Bacon (1 lb. pkg.) \$1.49
Armour Meat Hot Dogs (1 lb. pkg.) \$1.49

Buy 1 Package of Kirby & Holloway Sausage and Receive a Pound of Kirby & Holloway Scrapple FREE!

PEPSI 6 - 12 oz. Cans \$1.79



Save taxes with TDA!

What is TDA? It is a Tax-Deferred Annuity and the interest is tax-free until you withdraw funds.

- Second National's TDA currently pays 8.00%
- \$2,000 Minimum Deposit.

TAX DEFERRED ANNUITY EQUIVALENT YIELD TABLE

Your marginal tax bracket (state & federal)	To equal a tax-deferred yield of 8.00%, a taxable investment has to earn:
28% (28-\$45,000)**	11.11%
35% (45-\$90,000)**	12.31%

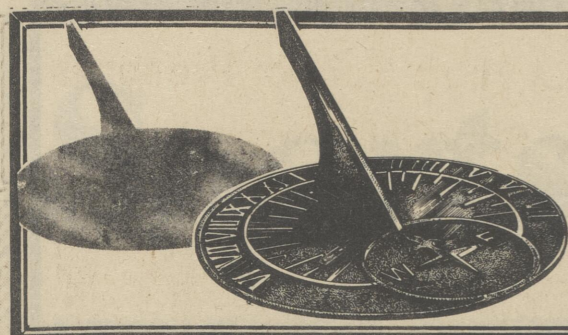
*8.00% used as example only **Married couple



Baltimore, MD
19 South Charles St.
Baltimore, MD 21201
1-(301) 322-8422
1-(800) 284-2628

() Please call
() Please send more information about TDAs.

Name _____
Address _____
City _____ State _____ Zip _____
Phone (____) _____



As Time Goes By...

Days Of Our Years

by Bonnie Algier-Mitchell
30 YEARS AGO
MARCH 14, 1958

A six-day strike of workers at Ace Manufacturing Company, dress manufacturers, ended yesterday morning.

The strike was part of an eight state walkout sponsored by the International Ladies Garment Workers Union. Locally, it affected about 100 persons.

The local plant was purchased some months ago by the Shroyer interests, who also operated the Shamokin Dress Company, Shamokin, Pa.

There is formidable opposition to the proposed revisions in Harrington's Charter, it was revealed Monday night at the City's representatives in the Legislature, at a meeting in the office of Magistrate L. Gooden Callaway.

Senator Peter Nechay, representing the Fourth Senatorial District, said he had received telephone calls and personal calls in the aggregate of 20 opposing the revisions. George Cain, representative of the Ninth Representative District, which covers most of Harrington, said he had encountered opposition, while Elmer Betts, representative from the Sixth Representative District, which takes in part of Harrington, had little to say.

The Charter revisions had been approved at the annual Citizens Meeting in January. A highly controversial revision would give the City the right to assess owners of abutting property for sewer installation.

Nimrod Minner, who resides at 236 Delaware Avenue, Harrington, will observe his 96th birthday, Sunday, March 16th. He was born and has resided in and near Harrington during his entire life. Mr. Minner is a retired employee of the Delaware Division, Penna. R.R. Co. He retired 26 years ago as a baggageman at the local station at which place he served 70 years.

The City Council Monday night considered three routes for a sanitary sewer on U.S. 13 south and authorized the city's consulting engineers to make feasibility studies and costs.

The report of Edward H. Richardson Associates may be revealed Monday night when the Council will conduct tax appeal night and other business.

A long record of outstanding customer service has earned national recognition for Taylor's Hardware Company, Inc., Frigidiaire dealership in Harrington.

J. Edward Taylor, of the local firm has won the top service award of Frigidiaire division of General Motors, the special

Award of Merit plaque for 15 years of outstanding customer service.

Check out these Acme prices...Sirloin Steaks...95¢ lb; Lancaster or Esskay Brand Slice Bacon...1 lb. pkg. 79¢; Hawaiian Punch...3 1-qt. 14 oz. cans \$1.00; and Medium Size, Grade "A" Eggs...2 doz. 75¢.

10 YEARS AGO
MARCH 15, 1978
Miss Joy Oakley and Lisa Waishes were crowned Miss-Little Miss Harrington Saturday night March 11 at W.T. Chipman Junior School Field House.

The program began with a welcome by Leroy Calhoun the president of the Lions Club. The Mistress of Ceremonies was Linda Gray from WAFL/WTHD radio station. The escorts for the Little Miss contest were Daren Lawson and Tommy Stayton.

Newly reappointed mayor George H. Nashold announced he would not renew the contract of Police Chief Ray S. Wood, at the reorganizational meeting Thursday night. (Frederica).

FREDERICA—Ronald W. Hobbs, 28, a native of Clayton, Delaware was promoted from Corporal of the F.P.D. to Chief of Police for Frederica in a special meeting held by the Frederica Town Council on Monday night. Hobbs attended Clayton Elementary School and graduated from Smyrna High School. He is single.

HARRINGTON—Councilman Earl McColley, a resident of Reese Ave., after an address by Frank DeLong of Reese Ave., introduced an ordinance directed at the Burris Food Plant on the east end of Reese Ave., which read in part that truck traffic would be restricted to load limits up to 30,000 lbs. or 15 tons. The controversial ordinance drew much discussion among the councilmen. Some voiced the idea that this would restrict Burris' access to his plant, but McColley said that Burris could construct a new road across his property to the rear and come out on the Farmington road. The 30,000 lbs. according to McColley is the State requirement for a load.

HARRINGTON—The Mar-Del Tractor Pulling Association of Laurel will relocate at the Delaware State Fairgrounds in Harrington. For the past four years the club has met and competed at the Laurel Auction Block. The will continue to hold their monthly meetings at the Delmar Convention Hall at State Line.

The first contest will be held at the Fairgrounds on April 9th at 12:00 noon.

Harrington Senior Center happenings

Thursday, March 10
Morning: Local Shopping; Sew-Sew Club in the Crafts Room.
Afternoon: Candy Bingo; 7:30 p.m. Board Meeting.
Friday, March 11
Morning: Tax Assistance 9 a.m. to 3 p.m.; Ceramics in the Crafts Room.
Afternoon: Bazaar Set-Up.
Monday, March 14
Morning: Bible Study with Rev. Dore in the Back Room; Ceramics in the Crafts Room.

Afternoon: Members Meeting.
Tuesday, March 15
Morning: Jolly Timers Band Practice in the Back Room.
Afternoon: Birthday Party in the Dining Room.
Wednesday, March 16
Morning: Senior Sounds Chorus Practice in the Back Room; Ceramics in the Crafts Room.
Afternoon: Coupon Bingo in the Dining Room.

The Harrington Journal invites you to submit your wedding, engagement, and anniversary announcements and photographs to be published on the social page. The deadline for receipt of these announcements is Friday at 4:00 p.m. They may be brought into our office at 19 Commerce Street or mailed to The Harrington Journal, P.O. Box 239, Harrington, Delaware 19952. If you would like your photo returned to you by mail, please include a stamped, self-addressed envelope.

Houston

by Pauline M. Morgan
Sunday Worship service at Houston United Methodist Church at 9:30 a.m. Sunday School for all ages immediately following the service at 10:30 a.m. Rev. William Dore, minister.

Last Sunday the Minister's message was "Life Opening to Life." The Youth Choir sang "If I Were A Butterfly." The Senior Choir sang "Ivory Palaces."

Flowers were placed to the glory of God in loving memory of David Finch by Rosanna Messick, also in memory of Franklin Morgan by Pauline Morgan, Connie and Jeff Moore.

Those who celebrated birthdays this week were Estelle Gallagher, March 2, and Elsie Dutko, on the 3rd.

Mr. and Mrs. Josiah Parvis and Mr. and Mrs. Wayne Eisenberry and Cindy attended a meeting at the Colony Inn, Milford, February 25, given by the Milford Memorial Hospital Cardiac Rehabilitation Program. Josiah and Wayne were honored graduates of the program. They received a certificate and sweatshirt for all their efforts.

Congratulations to Michael Abbate, son of Mr. and Mrs. Anthony Abbate, who took 2nd place in Troop 116's Pinewood Derby. He won a ribbon for fastest in his den and a ribbon for the best Indy car. Last year he won the derby.

Our sincere sympathy is extended to Mr. and Mrs. William J. Walls Jr. and family on the death of their 23-day-old son, William III. He passed away February 28 in the Christiana Hospital. Graveside services were held Wednesday, March 2, at Hollywood Cemetery, Harrington.

Last Saturday, Angelo Abbate filed to run for Mayor of the Town of Houston and Anna Belle Boone filed for a council seat. Since there is no contest, an election will not be held.

Reorganization meeting will be April 7, at the firehouse at 7:30 p.m.

The Administrative Board of the Houston United Methodist Church will be held Monday, March 14, at 7:30 p.m. at the church.

The United Methodist women will hold their next meeting on Thursday, evening, March 10, at 7:30 at the home of Madeline Quillen with Mrs. Anna Hammond, hostess.

Harrington Rotary Club

and will include the following: Frank Soriano for president, Tom Englehart, vice-president, Dr. Arthur Gilbert, treasurer, and Darrel Gravatt, secretary, with the Rev. Joseph Brame the new sergeant at arms.

The Knabe piano now in use in the banquet room at the Colony Inn where meetings are held each Thursday evening, was donated by Rotarian H.G. Farrow in memory of his wife, and has been tuned and put in first-class condition with a tuning donated by Bill Smith. Appreciation is extended to all concerned for this very worthwhile addition to meetings held in these rooms.

A recent visitor to a club meeting was Leslie Wix, vice-president of the Capital City Rotary Club, Dover.

At a suggestion made by Mrs. Winona Deputy, chairman for the tutorial program at the Chipman School, a donation was made by Harrington Rotary in support of this worthwhile program.

The slate of officers for the new fiscal year beginning in July has been revised,

Harrington New Century Club News

The Harrington New Century Club will have their annual Spring Luncheon and Fashion Show on Wed., March 16th at 12:30 p.m. Fashions will be by Leggett's.

Young ladies, children, mens and adult 1/2 sizes will be shown by local

Felton/Sandtown

by Lola M. O'Day 284-9175

Birthdays
Ricky Woikoski, Adam Christopher Mayle, Deanna Mogle, Bruce Johnston, Nyle Callaway III, Joseph Mogle, Paul Voshell, Charles R. Layton Jr., Nichole Egler, Buzzy Keough, Adams D. Hobbs, Adele Pazuiski, Aaron Knipe, Andy Killen, Marie DeLong, Carol E. Jarrell, Grace Grogan, Juli Michelle Hamilton, Heather Kenton, Melissa Kenton, Karen Bedsole, Jeannette Dill, Michael Tyler Trythall, Karen Kandy Wyatt, Sally Todd, Dorothy Warncke, Gary Johnston, Wanda McCloskey, Julie Sue Mayle, Mary Miller, Marsha Morris, Candi Mogle, Lester Kersey.

Happy Anniversary to Mr. & Mrs.

Chit-Chat with Bonnie

Well, certainly have been enjoying the pre-spring weather. Just two weeks until springtime makes its official entrance. I am looking forward to planting some flowers in the yard. Hope you have gotten the chance to see some of the lovely early crocus in bloom.

Recent visitors to the Harrington Historical Museum were Kitty Toppin Cole and Ann Toppin Lyman of Rehoboth. Kitty and Ann were born and raised in Harrington and it was nice to have them in town for a visit.

Those celebrating birthdays this week are: Rose Anna Mason, Ebon Coates, Ruth M. Bullock, Marie E. Bullock, Grace C. Welch, Mary A. Thompson, Dorothy Crew, Howard J. Hahn, Harry Spicer, Roland Stayton, Matilda Kotlaba and Velma Whitley.

On Sunday Mr. & Mrs. Eugene Porter entertained with a delicious turkey

Delaware Agricultural Museum plans special school tours

The Delaware Agricultural Museum in Dover has set aside five Fridays in 1988—March 25, April 15, May 13, June 3 and October 21—just for school children. On each of these days the museum's trained interpreters will introduce students to a 19th century rural farm community. These school tour days will have crafts demonstrators, farm animals and seasonal farm activities. In addition,

Delaware author has fourth book released

The Delaware Chapter of Romance Writers of America is pleased to announce the AVON BOOKS March/April '88 release of member JUDITH E. FRENCH's fourth historical romance, *Bold Surrender*. Ms. French, the author of *Tender Fortune*, *By Love Alone*, and *Starfire*, is a lifelong resident of Kent County, Delaware.

Bold Surrender is set in Chestertown, Maryland in the mid-18th century and is the story of a woman's attempt to run a tobacco plantation in an age of male domination. It is a tale of high adventure and romance, continuing Ms. French's series on the early settlers of Delmarva. Her fifth book, *Windsong*, will be a Dec. '88 Avon release.

Judith E. French has been writing professionally for 28 years and is a member of the Eastern Shore Writers Association as well as Romance Writers

Mickey Grogan. Hoping all of you will be feeling much better and soon be out and around again, Violetta Hammond, Virgie Carlisle, Elizabeth Gottwals, Earl Morris, Bill Brown, Doris Duerr, and Grace Babbs.

Thinking of you and you are really missed—Elizabeth Raughley, Johnnie Kersey and Pat & Norman Laskowski. Congratulations to Helen M. Dill on retiring from the First National Bank of Wyoming. Her customers and colleagues will miss her very much. I hope she enjoys her retirement and all goes the way she has planned, to be home and able to go out in her yard and relax.

dinner in honor of their son, Jeff's 25th birthday. Joining in the celebration were his finance', Brenda Nalbhone, Darryl, Cindy and Jake Porter.

Sympathy is extended to the Ray Blanchette family during the recent loss of Ray's father.

Many get well wishes to Terry Bagwell, who was injured in an automobile accident. Hope you are feeling fit real soon!

Little Miss Victoria Darlene Fenimore of Magnolia spent Friday with her grandmother, Mrs. Donna Hill.

Friday evening guest of Bonnie Mitchell was her friend, Marie Winkler.

On Sunday Mr. and Mrs. Don Mitchell and daughters, Susan Nicole' and Roberta enjoyed dinner with Mrs. Florence Mitchell of Laurel.

Mr. and Mrs. Raymond Poore have recently returned from a lovely vacation in Sarasota, Florida. They spent time relaxing and visiting friends.

On April 15th sheep shearing and textile crafts will be emphasized and on October 21st cider pressing and apple butter making will be highlighted. March 25th has been designated for pre-school and kindergarten children. Reservations for "School Tour Days" must be made in advance. For further information please call the museum office at 302-734-1618.

of America. Her family settled on the Eastern Shore in the seventeenth century and has farmed here ever since. Ms. French is married and the mother of four, including successful romance writer, Colleen Faulkner. Ms. French has recently signed a contract with Avon Books for three more novels. The Delaware Chapter of R.W.A. will host three local book signings featuring Judith E. French with *Bold Surrender*, and Colleen Faulkner with her *Zebra Books'* historical romance, *Raging Desire*. The public is invited to come and meet these Delaware authors on the following dates:

Saturday, March 26 from 11 a.m. to 3 p.m. at Waldenbooks at the Blue Hen Mall, Dover.
Friday, April 1, 6 to 8 p.m. at B. Dalton, at the Dover Mall, Dover.
Saturday, April 2, noon to 4 p.m. at Waldenbooks, in the Dover Mall, Dover.

SUPER MONEY MARKET

6.60%
Effective Annual Yield

6.42%
Rate Effective Thru 3/13/88

- \$5,000 opening deposit/minimum balance
- Balances below minimum earn 5 1/4%
- Instant liquidity—three checks per month
- Unlimited withdrawals in person

SECOND NATIONAL FEDERAL BANK
Savings

GREENWOOD, DE.
West Market St. (302) 349-5055
OPEN MON—THURS. 9 a.m.—3 p.m.
OPEN FRI. 9 a.m.—6 p.m.

DOVER, DE.
Rt. 113, Blue Hen Mall (302) 674-1290
OPEN SAT. 9 a.m.—12 p.m.

MILFORD, DE.
Rt. 113, Milford Plaza Shopping Center
(302) 422-5010 OPEN SAT. 9 a.m.—12 p.m.

Member FSLIC
26 Branches in DE and MD
Over \$930 Million in Assets.

Leggett

We Are Celebrating Our 100th Anniversary. This Year. This Will Be Our 25th Anniversary In Serving The Milford-Harrington Area.

Come Join The Harrington New Century Club Fashion Show At Asbury Methodist Church Wednesday, March 16th At 12:30 P.M.

Fashions By Leggett Models Local Residents

100 You're the reason

LEGGETT—THE PLAZA AT MILFORD
US 113, Milford, DE

HOURS: Mon. - Sat. 10 AM to 9 PM
LEGGETT CHARGE-VISA-MASTER CARD-CHOICE-AMERICAN EXPRESS

\$2 OFF WITH THIS COUPON

ROSES

Beautiful Portraits

Years from now, you'll be glad you had your child's portrait made at Roses. We use KODAK paper for quality that lasts...

And whenever you have portraits made, look for the KODAK symbol, your assurance of lasting quality.

Our regular \$9.95 portrait package includes one 8x10, two 5x7's and ten wallets, on your choice of background, and now it's only...

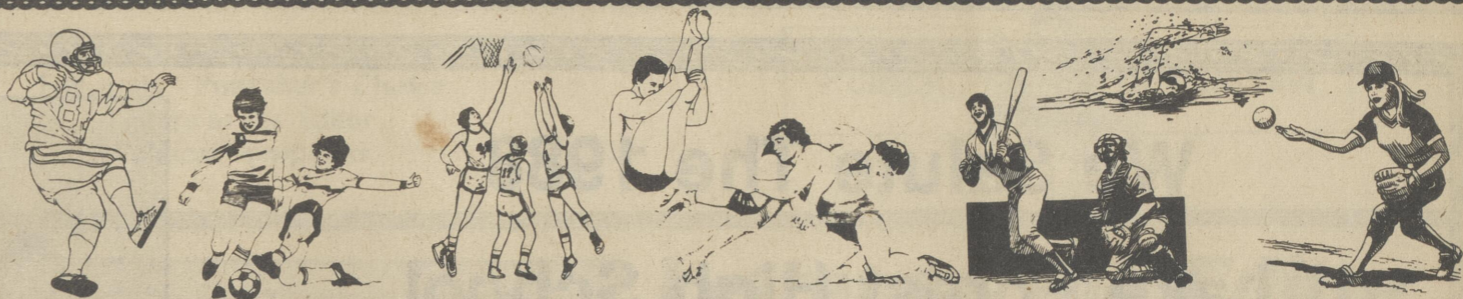
\$7.95 WITH COUPON
Plus 95¢ per subject when photographed.

These Days Only!

Friday, Saturday, Sunday
March 11, 12, 13, 1988
Friday & Saturday 11 to 7
Sunday 1 to 5
Milford Village Shopping Center, Milford, Delaware

We use **Kodak PAPER** for a Good Look

Sports News



Africa Bell leads Lake Forest in tournament finals

by Harry G. Farrow, Jr.

DOVER. The 1987-88 varsity basketball season ended for the Spartan girls Monday night as they fell to the top seeded team in the state, Ursuline Academy 58-49.

Africa Bell led the Spartans scoring 18 points and pulling down a dozen rebounds as she went head to head with Valeria Whitting, a leading scorer in the state. Whitting tallied 29 points for Ursuline Academy. Most of the 29 were easy drop ins right at the basket.

Whitting fouled out with 1:50 left in the game to the screams of Lake Forest boosters, Dover and Cape Henlopen fans.

At this point in the game, Ursuline was up by 11 points. Each team had been feeding field goals and foul shots. For most of the 4th quarter there was a 13 point spread.

When Whitting fouled out, the Spartans put on a charge that saw them come within 6 points of their formidable opponent, but with the clock running—Ursuline holding the ball—time ran out on the Spartans.

At the buzzer, the curtain came down on Lake Forest ending their most successful season ever with a 19-4 record. They were 1-2 in post season play with a 1st round bye in the state tournament.

The Spartans faced in Ursuline a very experienced team. Probably the single most edge Ursuline possessed was their experience having played not only a busy schedule but several very good Philadelphia teams.

"The first half was even—and I think we scared them", said Coach Borowski. Asked what she told her team at halftime she said "...just told them to keep up the pace, go after them—and bring the game to Whitting hoping to draw fouls."

Whitting did foul out, but she played a truly great game for Ursuline. Her point total of 29 was more than half of the team's total performance.

The Spartans played a tight zone defense which allowed them to double team Whitting.

Melanie Pelton was bottled up for most of the game shutting her down with just 2 points. "I think they well scouted her, and they were concerned with her potential—because in the two previous games she totalled 20 and 23 points—which were spectacular performances", said Coach Borowski.

Pelton leads Lake Forest in first round win

by Harry G. Farrow, Jr.

SEAFORD—The Lake Forest Spartan girls varsity basketball team showed a strong Tatnall team why they are Southern Division champs of the Henlopen Conference as they handed their upstate rivals a 63-36 pasting.

Led by Melanie Pelton, 2nd team All-Henlopen Conference forward and 1st team Southern Division forward, the Spartans were never threatened. The lanky 5'10" senior scored a game high 23 points with 12 in the first half and 11 in the second half. She hit on several soft one handers from the corner catching only the net.

The running Spartans wore down the Tatnall team with plays that kept a quick pace free substituters, and all court press.

Chris Minner replaced Arlene May in the second quarter and hit on a soft push shot at the top of the key to take a crippled Tatnall team even further down.

The Spartans dominated the game on both offense and defense. Their command of the boards kept the smaller

"Mel played a tremendous defensive game. She was everywhere. What she didn't have on offense she made up for on defense," added Coach Borowski.

"She (Melanie) was double teamed—and sometimes triple teamed. But all this freed up Tara (Dixon) who threw in 13 points. Tara made some real good shots—but we all told Tara she could do it," added Coach Borowski.

Coach Borowski paid particular tribute to her outstanding senior center, Africa Bell—game knee did not slow this lanky lass down as time and time again she controlled the boards. Of the two centers, Africa appeared to be the strength. "She didn't get those easy drop ins that Whitting had because they kept the lanes and center section blocked off", added Coach Borowski.

Coach Borowski said the zone defense was working, "...because they were just too good at ball handling—and allowed us better position for rebounds."

Arlene May did a superior job in ball handling, steals and served 11 points. The first half was even 13-12 at the end of the quarter. The score see-sawed back and forth in the second quarter until Ursuline pulled away to a six point lead just before the half ended.

Ursuline came out at the start of the third quarter firing away and extended their lead to 11 points before a crisp pass from Arlene May to Tara Dixon who netted a two hand over the head set shot to the pleasure of the crowded Dover court.

Ursuline continued to score and opened up a 13 point lead over the Spartans. Each team exchanged buckets with the score 49-36 at the end of the quarter.

The Spartans elected to go into a zone defense to bottle up the middle. Their defense as opposed to the man to man by Ursuline made it seem that the Spartans were being beaten down. "We were forced to the zoned defense to bottle up the middle," said Coach Borowski.

Again Coach Borowski praised her players for an outstanding season. Spectators from upstate commented during the game that Lake Forest had super athletes. "But I notice they only dribble with the right hand, and Ursuline will pick up on that before the night's over," said a school basketball scout.

Returning next year will be Arlene May, Tara Dixon and Evette Hicks.

Tatnall team constantly reaching in. The Refs laid off this type of call in the first quarter, but by the end of third quarter that type of foul was getting out of control.

At the half it was Lake Forest 30, Tatnall 16, and 45-26 Lake Forest at end of the 3rd quarter.

The Spartans opened up their attack scoring 18 in the 4th quarter, while Tatnall managed only 10.

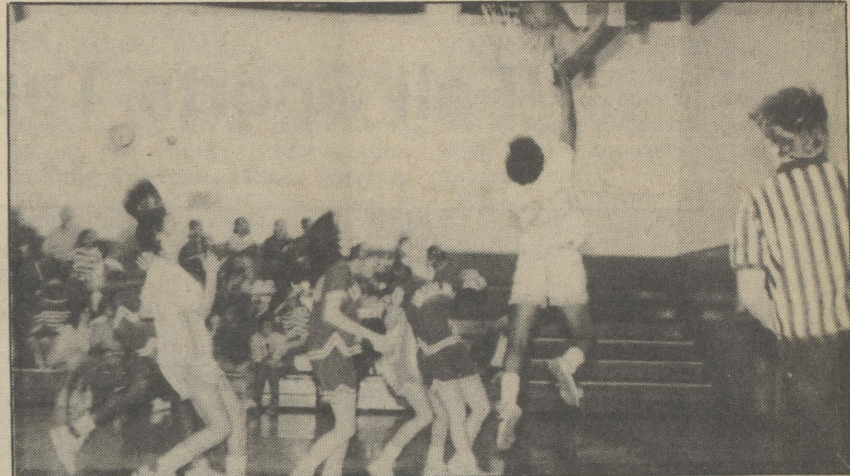
Coach Pat Dyal Borowski said she was not pleased with the way her team handled the ball. "We played poorly from missed shots, which were almost gimme's to bad passes, to turning the ball over too many times. We play this way on Monday night Ursuline will put us away early," she said.

The Spartans showed sparks of promise in their ball handling category when Arlene May, and Chris Minner found the open forward, Melanie Pelton, and sent her crisp passes which ended up in the basket.

The Spartans showed an upstate team a real classy played game.



Melanie Pelton (20) follows her 2 point field goal in game against Ursuline. Africa Bell (30) watches ball fall through net. Photo by HGF.



Tara Dixon goes for two in State Tournament game against Ursuline. Photo by David Dill.

Little League Tag Day

The Harrington Little League is starting their twenty-sixth year on Saturday, April 30th, with a parade of all the teams starting at 10 a.m.

Later in the season, the Little League will be going door to door dressed in their uniforms, and asking for donations to support them for another year. The Tag Day Drive will be the only fund drive of the year.

The Harrington Little League was first formally chartered in 1962. Through the cooperation of the Harrington, Moose Lodge, the league has three playing fields. The ladies auxiliary runs the concession stand to provide additional funds for the league. The league contacts local businesses and individuals to sponsor the different teams. Sponsorships range from the

Minor teams to the Big League team. Each year the Little League attempts to raise \$9,500.00 for equipment, uniforms and repair of property. Also, the League runs an advertising campaign where advertisements are placed around the fence of the playing fields.

Approximately 240 of Harrington's youth participated in the 1987 Baseball program. The league provides a structured learning ground for our future leaders. The league has 18 teams. The players range from the age of 6 to 18. Through the years the Harrington Little League has provided recreation, training in sportsmanship, and a basis for growth for more than 5,000 of this community's youth. It is with pride that the citizens of Harrington can look upon the efforts of those leaders,

organizers, sponsors and supporters that have dedicated their time and resources to this program. The youth are looking forward to playing ball this 1988 Season, the beginning of the 26th

year of Chartered Little League Baseball.

If you or your business or organization is willing to help, let us know by calling 398-3276 or 398-9474.

Delaware Special Olympics volleyball training school

Delaware Special Olympics is conducting a Volleyball Training School on Saturday, March 12, 1988, from 9:30 a.m. to 3:30 p.m. at Sussex Central High School in Georgetown. The training school is open to all Special Olympics coaches, parents, volunteers and anyone interested in

becoming a Special Olympics volleyball coach or assisting with a Special Olympics team in your area.

Dress casually - no black soled shoes, please. Also bring a sack lunch. Please register by Thursday, March 10th, by calling Delaware Special Olympics at 368-6818.

Milford Bowling League's high scorers

Club 55-Seniors Mix League
Mary Rice-554, Grace Messick-200 (62 pins over game), Wid George made the 4/7 split 10, Luke Clothier-537, Cornell Gardner-212 (55 pins over game)-515, Ed Barcus-203-510, Carmen Marcone-211, Jack Houston-218 (86 pins over game).

Jr. Y.A.B.A. (10 to 18) League
Steve VanGorder-226-544, Chris VanGorder-203, 207-554, John Sleitweiler-546, Jackie Spearman-160, Travis Parker-170, Brett Ryan-203, Herby Tunis Jr.-180, Andy Macklin-159.

Harrington Business League
Bill Kenton-203, Louis Wyatt-256, Bill Stokes-201, Curt Bartley-209, Don Jester-211, David Ryan-212, Wally Ryan-201, Ricky Welch-214, John Ottinger-219-573, George Jester-211, Ray Wright-201, Dennis "Sanka" Spicer-209, Chester Short-218, Drew Bowman-210, Bill Winkler-244-618, Allen Hickman-213, 226, 209-648, Skip Faulkner-202, Harold Brode-217, Jack Redden-202.

Civic League
Gordon Serman-247, Ed Serman-211, Mike Lewis-206, 212-603, Frank Fleming-202, Bo Brooks-208, 201, Bob Staiger-200, Will Thomson Jr.-206, John Rathje-208, Dave Wilcutts-202, Tom Ellingsworth-215, Paul Hudson-212, Charles Cordrey-208, 201, Jim Pride Sr.-204, Gerald Collins-201, Ralph Hahn-201, Floyd Fisher-204-573, Charles Ashby-219, Bob Chalmers-211, Dave Warner-205, 211, Dennis Paulson-212, Stan Harding-212, Ron Carroll-214, George Ryder-202, Harry Carey-219-593, Mike Carpenter-201, Curt Fritzingler-202, Gordon Clarkson-202.

Wednesday Seniors (60 to 85)
Ed Barcus-198-551, Charles Stubbs-203-542, John McCall-193, 203-539, Leon Conner-201-532, Jack Houston made the 5-8-10 split and so did Lester (deadeye) Messick.

Strickettes League
Midge Guida-213, 201-579, Nancy Daniels-245-562, Deloise Jones-542, Shirley Warren-200, 523, Shirley Taulbee-515, Edna Torbert-509, Debbie Hayman-504, Sandy Schurman-503.

Wednesday Early Mix League
Rick Lahman-231-628, Marine Hill-518, Nelson Kenton, Jr.-204, 204, Bob Sapp-210, Chuck Coverdale-220, Mike Lewis-223, Bob Conaway-202, Don Dickerson-200.

Hits & Misses League-Milford Lanes
Fran Clarkson-214, Juanita Mellings-215.

HIGH SCORES

Guys & Gals

2-24-88: Nelson Kenton-206, 201, 203-610, Mark Ford-216, 177, 215-608.

Milford Stitching
Sharon Cain-202, Carol Griffith-211, 200-604, Bob Conaway-216, Keith Hunsucker-224, 217, 634, Sandy Freeman-225, Carmen Sellers 82 (average bowled 167).

I.L.C.
Bill Dougherty-203, 216, Jamie Nieves-212, John Goff-200, Doug Stillwagon-200.

Bandits
Fred Snowden-266, Joe Custis-222, Jr. Warren-212.

Milford Hospital
2-25-88: Dr. Han-224, Rodney Messick-205, Allan Brooks-209, Del Dillow-204.

Independent
Harry Carey-238, Jr. Messick-215, 211, Dennis Paulson-236, 213-637, Bing Smith-214, John Conrad-225, 202-605, Pro's and Cons-1027 scratch, George Foy-209, 232, Bill Foy-214, 226, 202-642, Mike Hastings-227-646, Gary Allison-245, 213, 210-668, Randy Manship-256, Tony Reynolds-211, Tony Carico-214, Rick Lahman-212, Steve Pierce-204, Kevin Howard-224, Mike Lewis-209, Henry Boyd-218, Tim Hammond-213, "Big Boy" Shockley-211, Merrit Savage-205, Bob Steffens-631, Terry Bower-214.

Saturday Nite Live
Butch Armour-207, 208, 200-615, George Klemchusky-225, Tammie Adkins-200, George Layton-206.

Life in the Fast Lane.

Some people call it the rat race. A race no one ever wins. And everybody knows that. But we all keep on trying, anyway. As United Methodists, we may not have a formula for winning the rat race, but we do know how to make it more liveable. We run together—with each other and with God. Won't you join us?

FELTON UNITED METHODIST CHURCH
Sunday, 11:05 AM



Our health insurance may help you feel better. Call:



CURT CONLEY

35 Commerce Street
Harrington
398-3276

NATIONWIDE INSURANCE
Nationwide is on your side
Nationwide Mutual Insurance Company
Nationwide Mutual Fire Insurance Company
Nationwide Life Insurance Company
Home office: Columbus, Ohio

World's Largest
GRADY-WHITE Dealer

OPEN 7 DAYS A WEEK! ALL YEAR ROUND

Over 100 New Boats To Choose From. See The New Grady White Outboard Mounting System. Large Selection Of Used Boats. Great Savings On Remaining Left Over Models.

LARGEST PARTS INVENTORY ON THE SHORE COMPLETE LINE OF ACCESSORIES.

OPEN HOUSE March 19-20-21
Fantastic savings on 1987 leftovers!
1988 models now on display!

Cruiser/Privateer/Bonita/Mako/Polar Kraft/EZ Loader/Long/Load Rite

Chester River Boat Sales
DEL-MAR-VA'S VOLUME DEALER
Routes 301 & 544 Millington, Md. 301-928-3124

MARTIN JARRELL OIL CO.
Sales & Service
R.D. 3 Box 124 398-8870 Harrington, DE

Preseason Lawn Mower Tune-up Specials

How to get your lawn and garden tractor in your lawn and garden faster!

Now's the best time to take advantage of John Deere Service for your John Deere lawn and garden tractor. It's the perfect way to help prevent breakdowns and get your machine in top operating condition for spring. Our professional service technicians have the equipment and experience to spot potential problems and make fast repairs. Plus, we carry a complete line of John Deere replacement parts to keep your lawn and garden tractor running like new!

LAWN & GARDEN TRACTORS & RIDING MOWERS

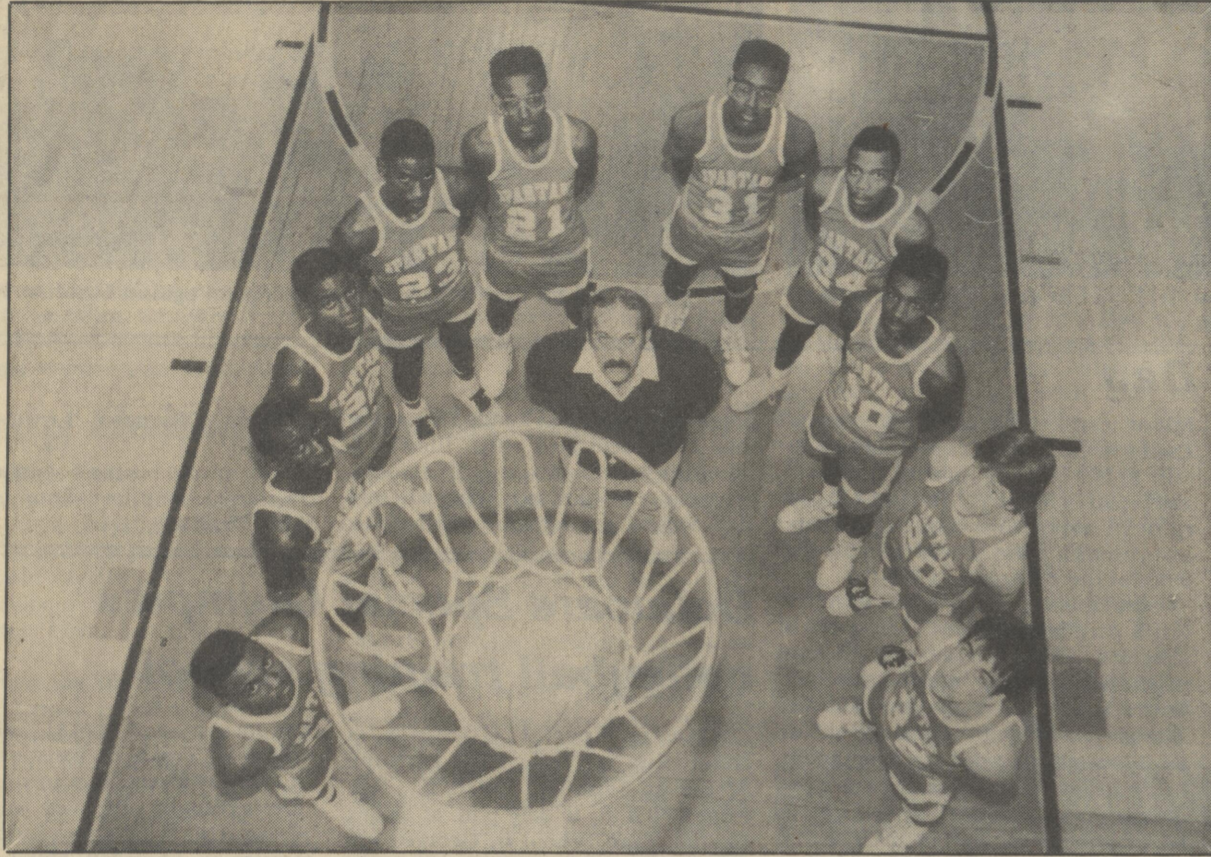
FREE PICKUP & DELIVERY

10% DISCOUNT ON PARTS & LABOR
JANUARY, FEBRUARY & MARCH 1988.

If paid within 30 days.
CALL FOR AN APPOINTMENT AT
(302) 398-3729

TAYLOR & MESSICK, INC.
Vernon Road
Harrington, DE 19952

We Salute The 1988 Lake Forest High School Fall Sports Teams



1988 BOYS VARSITY BASKETBALL TEAM
Left to right are: Rodney Parker, Ray Smith, Tony Bray, Tiggs, Craig Custis, Dan DeMora, Mike Eck and Coach Terrance Giddens, Floyd Holmes, Mac Holmes, Jayson Falasco. Photo by David Dill.



1988 BOYS JV BASKETBALL TEAM
Back row (L-R): Harvey Moore, Robbie Stubbs, Petie Davis, Herman Mosley and Randy Harris. Front row (L-R): Ike Rowland, Roger Collison, Chris Garton, Mike Smith, Donald Thompson and Coach VanSant. Missing from photo are (Capt.) Scott Talley and James Miller. Photo by David Dill.



1988 VARSITY GIRLS BASKETBALL TEAM
The team members are Deanna Scott, Melanie Pelton, Tara Dixon, Arlene May, Evette Hicks, Africia Bell, Amy McClements, Earlene Hicks, Robin Moreau and Coach Borowski. Missing from the photo is Chris Minner. Photo by David Dill.



1988 WRESTLING TEAM
Back row (L-R): Larry Keller, Alex Winchester, R.J. Stronski, Marvin Hicks, Phillip Collison, (Coach) Tom Shaffer and (J.V. Coach) John Mumaw. Middle row (L-R): (JR. Coach) Ken Outten, Jeff Gibeau, Guy Kowalchick, Steve Coppock, Bobby Reed, K. Darrell Allen and Larry Morris. Front row (L-R): John Moyer, Mike Sanders, Freddy Johnson, Mel Scliki, Ricky Torres and Kevin Wix. Photo by Mike McColley.



1988 GIRLS JV BASKETBALL TEAM
Elaine Zeitler. Back row (L-R): Mary Kay Taylor, Earlene Hicks and Tonya Norris. Front row (L-R): Christina Collick, Sherri Parsons and Photo by David Dill.

**HENLOPEN ATHLETIC CONFERENCE
1988 ALL-CONFERENCE BASKETBALL TEAM
MEMBERS FROM LAKE FOREST HIGH SCHOOL**
1988 All-Conference Team
First Team: Arleen May-Junior.
Second Team: Melanie Pelton-Senior; Africia Bell-Senior.
Southern Division
First Team: Arleen May-Junior; Melanie Pelton-Senior;

and Africia Bell-Senior.
Second Team: Tara Dixon-Junior.

**HENLOPEN ATHLETIC CONFERENCE
1988 ALL-CONFERENCE TEAM
MEMBERS FROM LAKE FOREST HIGH SCHOOL**
1988 All-Conference Team
Southern Division
Second Team: Tony Bray-Junior.
Honorable Mention: Mac Holmes-Freshman.

following criteria:
1. A Conference Representative (Athletic Director) of a school (s) after a minimum of fifteen years of service.
2. A coach within the Conference after a minimum of twenty years service.
3. Any nominee approved by the Board of Directors for meritorious service or contribution to the Conference as a whole.

The Board of Directors of the Henlopen Athletic Conference recently awarded a life time pass to Dave Adams, former Athletic Director at Lake Forest High School and treasurer of the Henlopen Conference for over ten years for Meritorious service to the Conference as treasurer and master scheduler.
The Conference awards life time passes to members on the

Taylor's Hardware
SERV STAR
Commerce Street
Harrington, DE
398-3291

THE LUNCH BOX
29 Commerce St., Harrington, DE
Sandwiches, Subs, Pizza,
Homemade Soups
Phone 398-3734 for take-outs
Keep The Tradition

**COLLINS PLUMBING
& HEATING, INC.**
BACKHOE SERVICE
U.S. 13 & Smith Ave.
Harrington, DE
398-8877

Holiday Motel
Rooms for Rent - Reasonable Rates
Located on U.S. 13 -
South of Harrington in
Greenwood
Phone 349-4270

BURRIS
BURRIS FOODS, INC.
Milford, Delaware 19963
MILFORD (302) 422-4531

**Steller's Dairy
Market**
Open 7 Days a Week
7 AM to 10 PM
Dorman St. Phone
Harrington, DE 398-8768

**Nanticoke
Homes, Inc.**
349-4561 or 678-3636
P.O. Box F
Greenwood, Delaware

**ROGER
MINNER**
24-Hour Towing Service
Service • Sales
Milford, Delaware
422-8596

**GERT PINK'S
PORCELAIN DOLL
STUDIO**
Baby Dolls
Wedding Doll Lamps
Your Own Wedding
Dress Can Be Duplicated
109 S. Church Ave.
Milford, DE 19963
302-422-2754

**DAWSON BUS
SERVICE**
Camden, DE
FOR RESERVATIONS CALL: 302-697-9501
From New Castle & Sussex County
Call 1-800-282-8525

**Brown's Accounting
Service**
Elwood R. Brown P.A.
TAX PREPARATION
40 Commerce Street
Harrington, Delaware
398-4484

**Senator
Ruth Ann Minner**
18th Senatorial
District

**Dover
Volkswagen, Inc.
Subaru-Audi**
Dover, Delaware
734-4761

**Johnson's
Mini-Mart**
U.S. 13 & DE 30
Woodside Light
Subs - Sandwiches - Groceries
697-6030

**The Peoples Bank
of Harrington**
The Friendly Bank
Harrington's only Full-Service Bank
Clark & Hanley Sts.
398-3256
Member FDIC

Hi-Grade Dairy, Inc.
Stop in for Homemade Ice
Cream, donuts, subs,
sandwiches
US 13 & DE 14, Harrington
398-3310

**MALAGO TIRE
& AUTO CENTER**
775 S. DuPont Hwy., 1/2 mile South
of Smyrna, Southbound Lane
653-6510 or 653-3722
1155 S. Gov. Ave. & US 13
Dover, DE, next to
Dover Animal Hospital
734-1212 or 678-1661

Betsy Ross Pizza
• Steaks • Subs • Pasta • Italian Dinners
EAT IN OR TAKE OUT
Call Ahead & Your Order Will Be Ready
398-4337
(Liberty Plaza) Harrington

**FRIENDLY FARM
FURNITURE**
The Only
"True Discount Store"
Rt. 18, Georgetown
856-2885

**Camden-Wyoming
Auto Sales**
Specializing in European
Auto Sales & Repairs
"We Service What We Sell"
2 Caesar Rodney Ave., 697-9595

Dover Bowl
Birthday Bowling Party
Specials - Free Nursery to
League Bowlers
Jeffric & Townsend Blvds.
Dover, DE
678-2700

Visit the
PENNSYLVANIA
DUTCH STAND
at Spence's
Farmer's Mkt.
South Street Dover, DE
(Open: Tuesdays & Fridays 9 a.m. to 7 p.m.)

Opinion

Editorials - Publisher's Choice
Letters to the Editor
Political Viewpoints

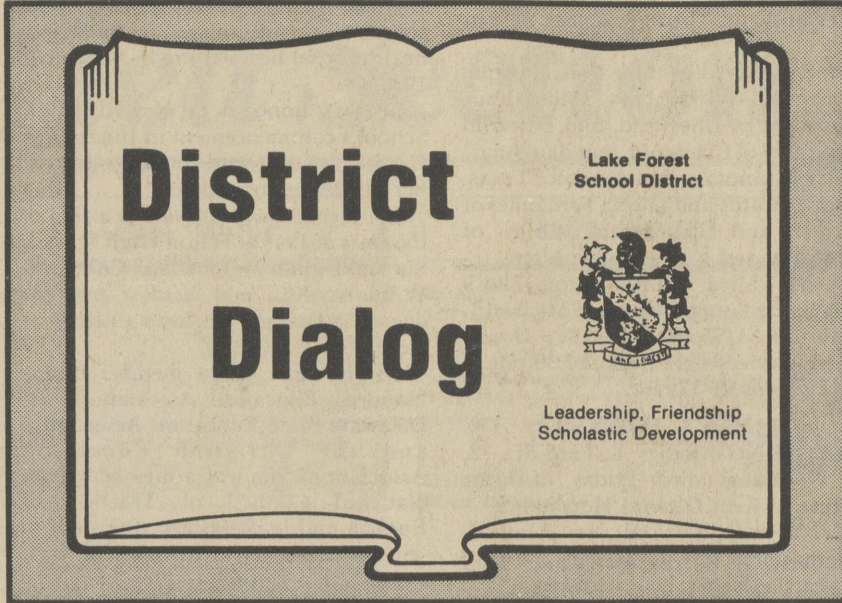
PUBLIC FORUM



Mandatory seat belts and other hot issues this session

by State Representative J. Ben Ewing
As many of you know, the legislature is in recess while the Joint Finance Committee writes the State's 1989 operating budget. I am using the break to brief constituents on some of the hot issues I expect to come before us when the General Assembly re-convenes. I have spoken to a number of constituents individually and shared with them the following list of issues.
SEAT BELTS: Despite numerous legislative defeats, a mandatory seat belt bill is likely to be re-introduced this year. Everyone I have spoken with to date has a strong opinion on seat belts. I expect the lobbying pressure to be great. One bill already introduced calls for a referendum on seat belts enabling you to decide the issue in a referendum.
TORT REFORM: Like seat belts, this has been before the legislature before. The proposed bill would cap attorney's fees in liability cases and would make a defendant liable for only his percentage of fault in a liability case.
PUBLIC SAFETY: In 1986, 20% of 16-year-olds were involved in an auto crash. Last year, there were 3,300

injuries on our highways and 147 deaths. This year Gov. Castle is proposing: 15 more state police officers, more sobriety check points, making radar detectors illegal, increased enforcement of safe-trucking regulations and a 60-day grace period for new drivers during which time they would have to be accompanied by a parent at all times.
CROP INSURANCE: The 1986-87 drought ruined countless acres of Delaware crops and forced some farmers out of business. This year, I expect legislation to be introduced which helps farmers pay their crop insurance premiums.
If you are a resident of the 35th District (Bridgeville, Greenwood, Houston, Hickman, Farmington, West Frederica West Milford and West Harrington, I would like to hear from you on these issues. And, if there is something of importance to you which I have failed to mention, please feel free to bring it to my attention. Address your responses to: J. Ben Ewing, State Representative, Legislative Hall, Dover, DE 19901. Thank you.



Censorship is Not the Answer

by Mary Jane Szajewski
Advisor, Lake Forest High School Newspaper
The Lancer

This country's Supreme Court has dealt student journalists a serious blow in ruling that school administrators have almost unlimited authority to censor school newspapers.

One of the major responsibilities of the public school system is to produce knowledgeable young adults who are independent thinkers and who can make responsible decisions on their own, youth who are prepared to enter the work force or to pursue higher education. Students cannot be expected to place trust in a system that trains them to make responsible judgments and then legally denies them the right to practice such responsibility.

Most, if not all, of the newspapers published by schools are the product of a journalism course or class. Each of these classes has a teacher or advisor. The students are trained to write, to edit, to refine, and to judge the appropriateness of their work.

Many of the students write not only for publication but also for competition. Recognition and awards don't come for writing cute little articles about trivial matters nor do they come for offensive stories about overly controversial topics.

Censorship, for whatever reason, would damage the quality of the work being produced by students.

In order to learn any skill, a person must work very hard to master it. Whether the skill is surveying a roadbed or plowing a field, building a piece of furniture or putting together a dinner party...skills are learned through "hands on" trial and error experience.

Writing requires the same deliberate application of hard work, critical self-evaluation and value judgment that would be praiseworthy in a successful trial lawyer. Allowing youth to practice their skills and exercise their judgment is important.

For student writers the Supreme Court has now limited that right to exercise their skill and judgment. Instead, it has put that right into hands of school officials who will be practicing their judgment.

Students live in the same world as adults. They have serious concerns about their world—and ours. Are these youth to be relegated to past times when "younguns" weren't allowed to openly discuss issues of importance that were considered too controversial or simply unacceptable for "polite society"? Can we afford in this fast-paced world to turn that clock back and keep our youth in the dark until they're 18 or 21?

And there's the question of fairness.

How fair is it to teach students one thing — such as the rights guaranteed to U.S. citizens by the first amendment — yet practice another on them—such as the censorship that amendment forbids.

Students are important; their ideas are important. Those ideas deserve to be shared, viewed, discussed. Students, like their parents, need to have a voice. The student press is their forum. Students have been taught right from wrong and should be allowed to continue to prove their good judgment. Student newspapers weren't meant to be the voice of an administration.

Though the law now gives school officials a right they never had before, for the sake of our youth, maybe these school officials will exercise some truly good judgment and choose not to further restrict students by censoring their school publications.

Knowing when to stop wasting taxpayer's money

by U.S. Senator Bill Roth

It's unfortunate when people are reluctant to admit they have made a mistake, but that's exactly what happened at the Pentagon. The Army has spent the last nine years and \$2 billion tax dollars developing the Aquila, a remotely piloted vehicle which is designed for surveillance use on the battlefield. The problem with the Aquila was it didn't work most of the time.

If you have the feeling you have heard this all before, you are partly correct. In October of last year I released a report by the General Accounting Office (GAO) stating that the Aquila could complete only 7 out of 105 flights successfully. Essentially, GAO said the Aquila was unreliable and was too complex for the average military person to operate.

On top of the poor performance record, I discovered that the contractor for the Aquila had been improperly involved in the testing results. The Inspector General at the Department of Defense concluded in an investigation which I requested that there were inadequate controls to prevent the contractor from influencing the test and that the contractor took repeated advantage of the lack of controls. Finally, after much needling on my part, the Army has finally decided to stop throwing good money after bad. Recently, the Pentagon announced they will discontinue funding for the Aquila.

While the Army was wise to abandon this wasteful spending, a larger question remains: How could it have continued for so long? When the Army contracted with Lockheed Missiles and Space Company in 1979, the projected

cost of the program was \$563 million. Costs exploded over the years to more than \$2 billion due to the inability of the contractor to meet Army specifications.

Despite the performance problems, the Army continued to pour money into the program. Typical of many government programs, the Aquila project took on a life of its own, growing from year to year, with inadequate administrative oversight and no apparent end to the escalation in cost.

One of the major problems with the Aquila is the fact that it was a "sole source contract," meaning there was inadequate competitive bidding on the original contract. In addition, the Aquila became "gold-plated" because the Army required it to perform too many functions, making its development too complicated.

Progress has been made to help avoid some of the problems which haunted the Aquila program. The Competition in Contracting Act, which I pushed in my Governmental Affairs Committee, will help promote competition on defense contracts and help prevent runaway costs. In addition, at my suggestion, an Undersecretary of Acquisition at the Defense Department has been established. This Undersecretary has the responsibility to oversee the entire acquisition process at the Pentagon and to root out defense programs which are wasteful of the taxpayer's dollars.

Despite positive steps toward reform of wasteful spending practices at the Pentagon, a constant vigil is necessary to make sure other defense programs don't follow the Aquila's example.

Letter to the Editor

Dear Editor:
Kent County Levy Court Commissioners have set a Public Meeting for March 15, 1988 at 7:15 p.m. in Room 202 of the County Administration Building, 414 Federal Street, Dover, to consider the Bookmobile's future use or discontinuance. It has been suggested that the residents of Kent County are not getting their "money's worth" for the bookmobile. But it is true that we always find a way to afford the things we want and need and if the residents of

Kent County feel the Bookmobile is necessary, and important not only for their recreation but as an educational tool for their children they should make their opinion known to the Levy Court Commissioners.

There are some residents who remember borrowing books brought to this area by the book wagons, who still enjoy the service of the Bookmobile, as do their children, grandchildren and great-grandchildren.

Joyce Jefferson

LETTER TO THE EDITOR POLICY

Due to space limitations, please limit "Letters to the Editor" to one page, double spaced. The editor reserves the right to print only excerpts from longer communications. Only staff-written editorials are to be interpreted as reflecting the viewpoint of *The Harrington Journal*. The editor reserves the right to refuse to print and/or edit any and all letters submitted to *The Harrington*

Journal. All letters must have the signature of the author to be considered for publication. Those persons interested in printing their letters and editorials through "Letters to the Editor" should send them so that they are received in Monday morning's mail for the week of publication. Address them to: Editor, *The Harrington Journal*, P.O. Box 299, Harrington, DE 19952.

Income verification could save \$200 million

by Congressman Tom Carper

The President sent his fiscal year 1989 budget to Congress on February 18. While I was pleased to hear the bipartisan tone he set in his budget message, I was considerably less optimistic about the bottom line of the budget he sent to Capitol Hill.

If you read between the lines, and use more realistic economic projections and revenue estimates, this budget will leave us with a deficit approaching \$175 billion. That's well above the Gramm-Rudman target of \$136 billion.

The budget submitted recently might get this Administration off the hook, but it's going to create a real mess next year when we have to get the deficit down to \$100 billion. We're going to need strong medicine to get rid of this fiscal headache.

Part of the remedy can be found in enacting legislation which will eliminate unnecessary government spending wherever possible. Last year, I introduced the H.U.D. Income Verification Act. Originally one of the Grace Commission recommendations, this legislation is intended to reduce the incidence of fraud and abuse that exists in certain subsidized housing programs run by the Department of Housing and Urban Development (H.U.D.).

The need for this legislation is clear. Currently, H.U.D. provides rental assistance in excess of \$9 billion annually to approximately 4 million households. The subsidy provided to each household is based on all sources and amounts of income for members of that household. But H.U.D.'s only means of verifying income is based on voluntary disclosure and certification.

Unfortunately, there have been documented cases in many areas of the country involving attempts to defraud

H.U.D. by falsifying employment verification forms or failing to list assets on applications. It is estimated that at least 15% of H.U.D.-assisted households are either totally ineligible or are receiving more assistance than is allowable because they have under-reported their income. H.U.D.'s Inspector General has estimated that this results in overpayments in excess of \$200 million annually—and that is probably a conservative estimate.

My bill proposes to supplement the current system of voluntary disclosure of income with a new system. H.U.D. would utilize computer matching to compare the income that is voluntarily reported with employer-reported wage data, collected by social security number, in each state. Any discrepancies which are discovered could be examined more closely. To ensure fairness, affected individuals would be given the opportunity to contest any of the findings of this process.

I am sensitive to the concerns that adequate safeguards be taken to protect the privacy of those who are served by federal housing programs. But I think those privacy concerns, which were met when Congress agreed in 1984 to allow income verification for the Food Stamp and Aid for Dependent Children programs, are addressed in my bill as well.

My income verification proposal won't balance the budget, but given recent cuts in the federal housing program and the additional constraints being imposed by the need to reduce the budget deficit, we must do all we can to ensure that only the people who are truly in need benefit from these important programs.

Fighting highway fatalities

by Governor Mike Castle

The last time Delaware geared up to fight a major problem on our roads, we succeeded in passing some of the toughest anti-drunk driving legislation in the country. As a result, a number of alcohol-related accidents and fatalities has dropped significantly.

Despite that success, however, the billboards erected throughout the state to remind people to drive safely today bear a chilling statistic: the number of fatalities on Delaware highways this year has been as high as double last year's rate, and last year was the highest in seven years. Clearly we need to mobilize again if we are to solve this terrible problem.

Last week I asked about 100 Delawareans to help me organize a campaign to combat drunk driving, speeding and dangerous driving, injuries caused by failure to wear helmets and seat belts, abuses by truckers, and high rate of teenage involvement in accidents.

The next step is for these citizens to identify specific solutions to these problems and devise a strategy for solving them. In the next several weeks, they will develop packages of legislation to put before the General

Assembly for passage this year.

But I want them to go further. I want them to spearhead a major lobbying effort to make sure legislators act as soon as possible.

This is not a problem unique to Delaware. All across the nation, the reduction in accidents and fatalities that followed the gas crisis and lowering of speed limits seems to have been reversed. Death again stalks our highways.

But this state has never looked for excuses when we had problems to solve, and the fact that other states are experiencing some of the same difficulties is not a reason to accept them.

We need to crack down on speeders. We need to wipe out drunk driving. We need to find ways to help teenage drivers become safer drivers. We need to work with the trucking industry to make courtesy and safe driving once again a hallmark of the long-haul trucker.

Every citizen of this state can help. Make sure your legislators know that you support any effort to make our highways safer for our families, safe lives, and reduce the tremendous financial social costs of accidents and deaths on the road.

A laff a day...

by William T. Ficka

I won't believe in equal rights until a man can collect alimony by wearing a tight sweater and showing his legs to a judge and jury.

The immigrant just off the boat asked the first man he saw, "Sir, I would like to live in a healthful climate. Where would you recommend?" "Sub, Ah may be prejudiced, but the healthiest place in the world is good old Texas. We had to bribe a Yankee to come down so we could start a cemetery."

So the immigrant headed for Texas. When he got off the train, he saw a man about ninety crying his eyes out. "Why are you crying, old timer?" he asked. "My pappy just gave me a beating," replied the old timer.

"Why did he give you a beating?" "For throwing rocks at Grandpa."



SMALL BUSINESS ANGLE®

by John Sloan

WHAT'S THE DIFFERENCE?

How much is that TV in the window? It all depends on which street you're standing. If you're gazing into the GUM department store just off Red Square in Moscow, it'll cost you 669 hours of work. Just around the corner from the Champs Elysees in Paris, a comparable TV will set you back the equivalent of 106 hours. But on Main Street America, that television will require just 30 hours of your labor.

So, while you're zipping through the channels searching vainly for something more interesting than presidential debates or last winter's re-runs, pause a moment to consider the difference.

The NFIB Foundation will soon release a comparative standard of living chart based on 1986 retail prices in Moscow and four western cities. Entitled "What's the Difference," the chart shows the approximate worktime required for an average manufacturing employee to buy selected commodities in Washington, D.C., London, Paris and Munich and at state-fixed prices in the Soviet capital.

If it's frozen cod you fancy, then you'll love Moscow. There it costs less than half what it would in Washington. But if you want chicken or hamburger or ice cream, you'd better stay in America. As a matter of fact, frozen cod is about the only food that is cheaper in the Soviet Union than in the U.S. Transportation, clothing, household items and services also cost less in the U.S.

Communist economics aside, let's look at capitalism. Western Europe does fare better, but still lags far behind the U.S. A sirloin steak, for example, means 83 minutes of work for the average American. But in London, it is equal to 123 minutes, 109 in Paris, 93 in Munich and 145 in Moscow.

Time to buy a new car? That medium-sized buggy costs you nine months at your job in the U.S., a year in Munich, 15 months each in Paris and London. Pity the poor Soviets. It will take the average citizen in Moscow seven years to earn that much.

What's the difference? It's a lot more than dollars and rubles, shillings and francs. The difference is economic policy.

In the past decade, the U.S. has seen unprecedented economic growth. Why? Because American small businesses have been popping up like daisies on a spring day, filling unmet business needs, creating jobs and generating new sources of wealth.

But across the Atlantic Ocean, an economic malaise has set in. High unemployment and low productivity have become the curses of Western European businesses. The cause: economic policies which require heavy loads of employee benefits such as mandatory parental leave, health insurance, plant closure notices, severance pay and extended unemployment insurance.

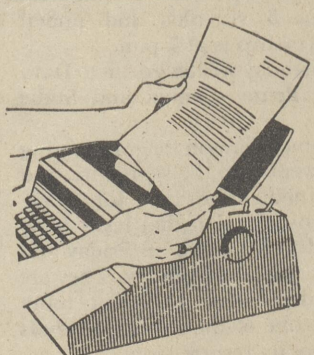
Is it any wonder that European employers are reluctant to expand their workforce? There is a clear message for the U.S. Congress here too, as they rush pell-mell to enact similar mandates to appease voters during an election year. The message: learn from the lessons of a failed experiment, don't kill the entrepreneurial spirit for the sake of political expediency.

Ever wonder why you rarely see photos of Russians wearing blue jeans? For a copy of the chart, send one dollar to the NFIB Foundation, P.O. Box 7515, San Mateo, CA 94403.

John Sloan is President of the National Federation of Independent Business, representing more than half a million small-business men and women.

Submit Your Letter to the Editor

Deadline: Noon, Monday



Person-to-Person

A very special family

by Rebecca Moore

This newspaper column is very special to me for a lot of reasons. It's the fulfillment of a lifelong dream. I can vent my feelings on paper. It presents positive news rather than negative news. Lots of reasons cause me to enjoy this part-time avocation. But the reason I enjoy this column the most is because of the people I get to meet. Because of "Person to Person", I can pick up the telephone and arrange to meet people whom otherwise I'd never have a chance of meeting. I can wander through my grandmother's house, so filled with memories, or watch a veterinarian in action. I can meet someone who is the head of an empire, and someone whose real greatness is in her willingness to serve. This column opens so many doors to me, and for this I am grateful.

Last Monday, I spent several hours with someone who just about everyone in Harrington knows. If you don't know him personally, you've at least seen his name in *The Harrington Journal* or in the telephone book listed as the Pastor of the Independent Bible Fellowship Church. He is Pastor Clifford Lones, and the time I spent with him and his family was time well spent.

Independent Bible Fellowship Church is located on Harrington-Milford Highway, and sitting right next to the church is the house where Pastor and Mrs. Lones live with their daughter, Rachel. Arriving at the red brick house at one o'clock, I was met at the door by the very tall Pastor Lones, and was ushered into their beautiful home. This L-shaped ranch house would make anyone feel at home. I was surrounded by counted cross stitch, wooden teddy bears, soft, rose-colored carpets, early American furnishings, and genuine country decor. It was like Barbara Page and the Craft Cottage had a heyday. There was even a sheepskin rug on the floor in front of the sofa. It was obvious that a great deal of care and attention were given to every inch of this beautiful house.

Mrs. Lones came into the living room a few minutes after I arrived, along with her shy little eighteen-month-old grandson, Devon. Devon looked me up and down, deciding what to make of me. He was just slightly wary of this stranger—his parents had trained him well. But as the minutes passed, Devon decided I was not to be feared, and he became quite entertaining. He made quite a picture cavorting about the house with a yellow trash can as his head! Mrs. Lones looked just as I had pictured her. She's tall and slim and she just looks like a Mom—you know, the type that you could go to and tell her all your troubles, and, somehow, she'd make them all better. She also is the perfect match for her hubby—they even look like they belong together. And that's the way it's been for thirty-four years, through six children and ten grandchildren.

Talking to Pastor and Mrs. Lones was easy. They're both friendly and outgoing. Our conversation rolled along and they told me how they arrived in Delaware. They have gone from Michigan, (Moody Bible Institute) to Ohio, (Cedarville College) back to Michigan, (Grand Rapids Seminary) to West Virginia, where they learned about a place called Harrington, Delaware. It was because of the church that the Loneses came to Harrington, and they have been here for five years. When they arrived in Harrington, the church was located in a building on Liberty Street in town. It wasn't too long, though, before the church was bursting at the seams. Sunday School classes were being held in people's homes and there was no place to expand. It was obvious that something had to be done. The property on Route 14 was purchased, and Pastor Lones began designing the new building. It had to be large enough to allow for the

continued growth of the congregation, so much thought and prayer went into the plans for the new building.

This past summer, Pastor and Mrs. Lones were able to move from their home on Grant Street, to their new home next to the church. I think what amazed me the most about their new home was the fact that Rev. Lones built it. The design of it was unique and increased the homey appearance. Even the most elaborate cook would have been thrilled with Mrs. Lones' kitchen—it was thoroughly modern, but country at the same time. Off the kitchen was the family room. It was open and airy and the sun poured through the French doors.

While we were in the family room, I met Rachel. Rachel spends most of her days laying in the sunshine of the family room. She is tall with soft brown hair and a cheerful smile. But Rachel didn't talk to me while I was visiting with her. She was born with cerebral palsy, due to lack of oxygen at birth, and her communication abilities are limited. While each of the six Lones children is unique and special in his or her own way, Rachel has a little something extra that makes her exceptional. She will never attend college, get married, or hold a job as her siblings do. But she has other responsibilities only she can fulfill, for Rachel is a teacher. It is through her quiet dependency that we learn about ourselves and how incredibly valuable life is. I was nearly in tears as I watched Pastor Lones sit in the floor of the family room and play with Rachel. He was bursting with pride and love for this very special daughter of his, and these showed in his face and in his gentleness and concern for her. As for Mrs. Lones, it seems that her very life revolves around Rachel. So much of her day is totally devoted to Rachel, and until just a few years ago, Mrs. Lones had no idea what it was like to sleep through an entire night. Even their home was built with Rachel in mind. Her room was designed to be functional and practical, and yet, decorated so as to be attractive and appealing for Rachel. In Mrs. Lones, Rachel has not only a devoted mother, but a nurse, companion, teacher, entertainer and friend. These amazing people are everything to Rachel. But, then, Rachel is easy to love. This was obvious from watching Devon with his Aunt Rachel. He spent much of his afternoon entertaining her—bringing her toys, talking to her, and showering her with hugs and kisses.

The Loneses spoke often of their children—Deborah, Stephen, Mark, Timothy, Daniel and Rachel—and their conversation was always with pride. All of their children, with the exception of Daniel and Rachel, live quite a distance away, so their times together are few and far between. Daniel, however, has stayed in the local area, and works for Modern Gas. His wife, Abby, works at the Peoples Bank, and, together, they're busy raising little Devon.

When she can find the time, Mrs. Lones loves to play the piano and sing. She also directs the church choir. Pastor Lones unwinds in his carpentry shop with his tools. Together, they make quite a pair.

So, now you've met Pastor and Mrs. Clifford Lones. To see them on the street, you'd think there was nothing extraordinary about them. But that would not be the case. Very few of us could do the things the Loneses do every day of their lives. Very few of us could preach and bear the burdens of an entire congregation. Very few of us could build as does Pastor Lones. Very few of us could play, sing and direct as does Mrs. Lones. But, mostly, very few of us could love as do Pastor and Mrs. Lones. They are, indeed, very, very special people and I am so grateful for the opportunity I was given to get to know them!

Obituaries

(Continued from page 6)

BENITA C. FERNANDEZ
CHESWOLD — Benita C. Fernandez of Commerce Street, Cheswold, died as a result of cardiac arrest Monday, February 29, 1988, in her home. She was 69.

Her husband, Cruz Fernandez, died in 1966.

She is survived by three sons, Enrique Fernandez of Salisbury, Md., Jesus Fernandez of Cheswold, and Eduardo Fernandez of Cheswold; four daughters, Maria Espinosa of San Antonio, Texas, Ester Edwards and Gloria Fernandez of Dover, and Esperanza White of Frederica; and nine grandchildren.

Friends called Thursday from 7 to 9 p.m. at the Funeral Home of Michael J. Ambruso, 1175 S. State St., Dover, where services were held at 7:30 p.m. Burial was in Texas.

JAMES T. FORD SR.
WYOMING—James T. Ford Sr., 72, of Wyoming, died Friday of heart failure in Kent General Hospital.

Mr. Ford worked at Playtex International Inc. for 31 years, retiring 10 years ago.

He is survived by his wife, Thelma B.; two sons, James T. Jr. of New Orleans and Bruce C. of Parkersburg, Va.; three daughters, Thelma Barbour of Richmond, Va., Rosemarie Thompson of Frederica and Nancy L. Ford of Dover; a brother, Herman of Wyoming; four sisters, Anna May Hurd of Georgetown, Emma Taylor of Dover, Elizabeth Porter of Goldsboro, Md., and Rose Klein of Wyoming; and 15 grandchildren.

Services were at 1 p.m. Monday at Berry Funeral Home, Felton, where friends called Sunday evening from 7 to 9. Burial was in Odd Fellows Cemetery, Camden.

WILLIAM R. HILL
BRIDGEVILLE—William R. Hill of Edgewood Street, died of heart failure Monday, February 29, 1988, in Nanticoke Memorial Hospital, Seaford. He was 83.

Mr. Hill, a life insurance salesman at Monarch Life Insurance Co. for 40 years, retired in 1967.

He is survived by his wife, Elizabeth D. Hill; a son, William R. Hill II of Baltimore; a daughter, Mary Lu Waddell of Manahattan Beach, Calif.; six grandchildren; and two great-grandchildren.

Services were 1 p.m. Friday in St. Mary's Episcopal Church, Bridgeville. There was no viewing.

Burial was in Bridgeville Cemetery. Instead of flowers, the family suggests contributions to St. Mary's Episcopal Church, Bridgeville.

JAY R. HULSTINE SR.
MILFORD—Jay R. Hulstine Sr. of R.D. 1, was dead on arrival at Nanticoke Memorial Hospital, on Friday, March 4, 1988, as a result of injuries sustained in an automobile accident. He was 74.

Mr. Hulstine was a pipefitter at Sun Oil Company. He retired in 1974. His wife, Eva, died in 1983.

He is survived by a son, Jay R. Hulstine Jr. of Magnolia; a daughter, Hazel Watt of Milford; eight grandchildren; and two great-grandchildren.

Services were 1 p.m. Friday in the Berry Funeral Home, Milford, where friends called Thursday evening from 7 to 9.

Burial was in Odd Fellows Cemetery, Milford.

MARY P. HYNSON
Mary P. Hynson, chairman of the English department at Newark High School for 20 years and a nominee for state teacher of the year, died Tuesday, March 1, 1988, of cancer at home. She was 57.

Mrs. Hynson, of 8 Knickerbocker Drive, Brookside Park, Newark, began teaching in 1953 at the former Milton High School. She also taught in Felton and Easton, Md. before joining the Newark High School staff in 1958.

Mrs. Hynson underwent surgery for cancer in 1980. She returned to the classroom despite several months of continuing treatment, family members

said. In 1983, she was Christina School District's nominee for state teacher of the year. As one of her colleagues wrote when nominating her, "This woman literally lives to teach."

Mrs. Hynson was chairman of the English department and sponsor of the school's literary magazine until her health forced her to retire in November 1986.

She was honored at Newark High School's commencement in June with a Golden Apple award in recognition of her influence on students.

Mrs. Hynson was the valedictorian of the class of 1948 at Felton High School. She was a graduate of Asbury College in Wilmore, Ky., and held a master's degree from the Teacher's College of Columbia University.

Mrs. Hynson was a member of the National Education Association, the Delaware State Education Association and the Christina Education Association. She was a member of the National Council of Teachers of English and its Delaware affiliate.

She was an active member of First Presbyterian Church of Newark.

She is survived by her husband, Donald, also a teacher in the Christina School District; a brother, James Pizzadili of Lewes; and a sister, Giannina Kimball of Jersey Shore, Pa. Memorial services will be at 10 a.m. Saturday, March 12, at First Presbyterian Church, 292 W. Main St., Newark.

Instead of flowers, the family suggests contributions to the Hynson Memorial Fund, which recognizes outstanding student writers, in care of Newark High School.

POSEY HAMPTON LaPRAD
SEAFORD—Posey Hampton LaPrad, 77, of 610 Elm Drive, died Saturday, March 5, 1988, of congestive heart failure in Nanticoke Memorial Hospital.

Mr. LaPrad worked for DuPont Co. for more than 40 years. He last worked in the engineering department of the Seaford Nylon plant. He retired in 1975.

He was a member of Salisbury (Md.) Baptist Temple.

His wife, Lois Roatenberry LaPrad, died in 1978.

He is survived by a son, Robert Lee LaPrad of Greenwood; a daughter, Ginny L. Wats of Camden, S.C.; four brothers, Peter E. of Seaford, Charles E. of Richmond, Va., and Ephraim D. and Howard, both of Salem, Va.; a sister, Estelle L. Walker of Salem; and four grandchildren.

Services were Monday morning at 11 a.m. in Watson-Yates Funeral Home, Seaford, where friends called Sunday evening from 6 to 8. Burial was in Odd Fellows Cemetery, Seaford.

Instead of flowers, the family suggests contributions to the American Heart Association, Georgetown.

JOHN W. LORD
HARRINGTON—John W. Lord of R.D. 2, Harrington died of heart failure Wednesday, March 2, 1988, in Milford Manor Convalescent Center. He was 93.

Mr. Lord retired in 1960, after 30 years as a conductor with the Pennsylvania Railroad. After he retired, he was a guard for 14 years at the Henry Frances DuPont Home, at Winterthur Museum.

He is survived by his wife, Ruth E. Lord; a daughter, Elizabeth C. Knott of Arden; and a grandson.

Services were 1 p.m. Saturday at Lofland Funeral Home, Milford. Friends called Saturday after 12 noon at the funeral home.

Burial was in Hollywood Cemetery, Harrington.

JAMES F. MacKENZIE
MAGNOLIA—James F. MacKenzie of Edgewater Drive, St. Jones Landing Trailer Court, died of a heart attack Monday, February 29, 1988, in Kent General Hospital. He was 60.

Mr. MacKenzie was a maintenance man at St. Jones Landing Trailer Court.

He is survived by three brothers, Kenneth MacKenzie of Kelo, Wash., Robert MacKenzie of Patchogue, N.Y., and Charles MacKenzie of Salinas, Calif.; three sisters, Ann MacKenzie of East Boston, Mass., Dorothy Wagner of Franklin, Mass., and Betty Goguen of Brooks, Maine; and a half sister, Mimma MacPhail of Cape Breton, Nova Scotia.

Services and burial will be private.

MARY C. MALLOY
DOVER—Mary C. Malloy of Carol Street, died of cardio respiratory arrest Friday, March 4, 1988, in her home. She was 55.

Mrs. Malloy was a sewing machine operator for Eastwinds Company, Lumar Company, Milford Stitching Company and General Clothing Company of Smyrna. She retired due to illness in 1986.

She is survived by her husband, Joseph Malloy; three sons, Kevin and Kurt Malloy, both of Dover, and Keith Malloy of Tempe, Ariz.; a daughter, Karen Lanter of Dover; her mother and father, Harold and Mary Musser of Lancaster, Pa.; three sisters, Doris Ruby and Pamela Becker, both of Lancaster, and Margaret Patrick of Baltimore, Md.; two brothers, Robert Musser of Lancaster and Donald Musser of Miami, Fla.; and three grandchildren.

Mass of Christian Burial was offered at 11 a.m. Monday at Holy Cross Roman Catholic Church, Dover.

Burial was at the convenience of the family.

Instead of flowers, the family suggests contributions to the Delaware Hospice, 637 South Governors Avenue, Dover, Del. 19901, or the American Cancer

Society, Kent County Unit, 707 Walker Road, Dover, Del. 19901.

Arrangements by Faries Funeral Directors, Dover.

RODNEY L. MORGAN

DUNCAN, OKLA.—Rodney L. Morgan of Duncan died Saturday, March 5, 1988, in his home of a heart attack. He was 48.

Mr. Morgan was a retired U.S. Army sergeant.

He is survived by his wife, Iolla Morgan; one son, Robert Morgan at home; one brother, Norman Morgan Jr. of Federalsburg, Md.; and three sisters, Joyce Schweitzer and Agnes Rice, both of Harrington and Nancy Bradley of Lincoln.

Services were 2 p.m. Tuesday in Becker Funeral Home, Lawton, Okla. Burial was in Fort Sills Military Cemetery, Lawton.

RT. REV. J. BROOKE MOSLEY
PHILADELPHIA—Services for the Rt. Rev. J. Brooke Mosley, sixth bishop of the Episcopal Diocese of Delaware and a civil rights activist, were Tuesday at 11 a.m. in St. Luke & the Epiphany Church, Philadelphia. A reception was held in the parish house after the service.

Burial was private and there was no viewing. Memorial services will be Friday at 11 a.m. in the Cathedral Church of St. John, Concord Avenue and Market Street, Wilmington.

The Rt. Rev. Mosley, 72, of Lombard Street, collapsed and died Friday, March 4, 1988, while on a business trip in New York City.

He came to Delaware in 1948 as dean of the Cathedral Church of St. John in Wilmington. He was installed as bishop of the diocese in 1955, after the retirement of the Rt. Rev. Arthur McKinstry. He resigned in 1968 and took a position as deputy for overseas relations and bishop of the convocation of American Episcopal churches in Europe.

His years of leadership in Delaware were marked by civil rights activities aimed at open housing and public accommodations, integrated schools and non-discrimination in employment.

He is survived by his wife, Betty Mary Wall Mosley; a son, Peter of Alexandria, Va.; two daughters, Miriam Mosley of New York City and Sally Sandor of Los Angeles; and five granddaughters.

Instead of flowers, the family suggests contributions to Planned Parenthood of Southeastern Pennsylvania, 1220 Sansom St., Philadelphia 19107.

ELIZABETH J. RYDER

FREDERICA—Elizabeth J. Ryder of Jackson Street, died of respiratory failure Monday, March 7, 1988, in Milford Memorial Hospital. She was 83.

Mrs. Ryder was a homemaker. Her husband, George Phillip Ryder, died in 1954.

She is survived by a son, George W. of Milford; a brother Roy Briggs of Magnolia; a sister, Sarah Holleger of Milford; two grandsons; and a great-granddaughter.

Services will be today at 1 p.m. in the Lofland Funeral Home, 102 Lakeview Ave., Milford, where friends may call after 12 noon.

Burial will be in Barratt's Chapel Cemetery, Frederica.

JOHN K. SIMONS

SEAFORD—John K. Simons, a former Bridgeville town commissioner, died Saturday, March 5, 1988, of cancer in Methodist Manor House. He was 66. Mr. Simons, of 83 Walnut Drive, formerly of Bridgeville, also was a

former president and secretary of the commission.

He was office manager for 37 years for Ralph & Paul Adams, Inc. in Bridgeville. He retired in 1986.

He was past state commander of American Legion Department of Delaware and a past national executive committeeman of the American Legion.

He was a member of Bridgeville American Legion Post 26, and an honorary life member of Bridgeville Volunteer Fire Co.

He was a member of Union United Methodist Church and its administrative board. He was church treasurer for 17 years and a choir member.

He is survived by his wife, M. Lucille; a daughter, Jacqueline S. Alvarez of Seaford; and a sister, Nedra Eberhardt of Paoli, Pa.

Memorial services will be today at 11 a.m. in Union United Methodist Church, Market and Laws Streets, Bridgeville.

Instead of flowers, the family suggests memorial contributions to Union United Methodist Church, Bridgeville.

ALLAN J. SNEED

MAGNOLIA—Allan J. Sneed of Woodville Manor died of injuries sustained in a fire in his residence Saturday, March 5, 1988. He was 42.

Mr. Sneed was employed in the material and research section of the State Highway Department.

He was a veteran of four years in the U.S. Air Force.

He is survived by his wife, Mildred Denise Sneed; his mother and father, James and Jean Sneed of Magnolia; and three sisters, Jeanette Zaun of Frederica, Debra Sneed of Magnolia and Amy Conner of Smyrna.

Memorial services were 7:30 p.m. Tuesday in the Torbert Funeral Chapel, Dover.

MARY I. TODD

Mary I. Todd, 68, formerly of Hillside Heights, Newark, and Smyrna, died of a heart failure Saturday, March 5, 1988, in Churchman Village, where she lived for three years.

Mrs. Todd worked at Delaware Hospital for the Chronically III in Smyrna for 30 years, the last 10 years as a licensed practical nurse. She retired in 1971.

She is survived by her husband, David M. Sr.; two sons, John David of Pedricktown, N.J., and David M. Jr. of Newark; a brother, Walter Procko of Felton; three sisters, Florence Green of Felton, Clara Polito of Smyrna and Eleanor Hollinger of Magnolia; and two grandchildren.

Services were Tuesday at 2 p.m. in Faries Funeral Chapel, Smyrna, where friends called at 1. Burial was in Odd Fellows Cemetery, Smyrna.

ETHEL M. WHEATLEY

DENTON, MD.—Ethel M. Wheatley, 976, of Denton, died Friday, March 4, 1988, in Memorial Hospital, Easton.

Mrs. Wheatley worked at Continental Can Co. in Hurlock, retiring in 1958. Her husband, Payton H., died in 1954.

She is survived by a son, Henry E. of Seaford; three daughters, Mary Virginia Fishell of Denton, Bernice W. Trice of Hurlock and Doris L. Newell of Federalsburg; a brother, Levin D. Bestpich of St. Petersburg, Fla.; a sister, Clara Phillips of Cambridge; nine grandchildren, 10 great-grandchildren and five great-great-grandchildren.

A daughter, Katherine A. Smith, died in 1982.

Services were at 2 p.m. Monday in Frampton-Hawkins Funeral Home, Federalsburg, where friends called one hour before services. Burial was in East New Market Cemetery.

Church News, con't.

Harrington United Methodist Church

Joseph V. Holliday Jr., pastor.

Melvin Brobst, organist-director.

This Sunday, March 6th was the third Sunday of Lent and Holy Communion.

Sunday School was at 10 a.m. and Worship Service at 11 a.m. Aaron Rhodes gave a beautiful trumpet solo.

The scripture reading was John 20:24-31 and followed by the sermon, "On The Hill." Communion was then offered to all with the closing hymn, "In The Cross of Christ I Glory."

Following church service there was a coffee hour in fellowship hall.

Kelly Calhoun, Acoylte, Head Usher-Bailey Minner, Ushers-Winston Linton and Jerry Geyer.

O.U.R. Class will meet at 7:30 p.m. Dover District Conference at the Avenue U.M. Church in Milford, subject: to discuss district office and select district Lay Leaders.

Anyone wanting to put a Lilly in Church for Easter, April 2, please contact Bernie Maloney 398-4535.

Those having birthdays this week are Kevin Dill, Greg Porter and Bernie Maloney.

Harrington Baptist Church

The Week of Prayer for Home Missions continues with tonight's meeting (Wednesday) at the church at 7 p.m. The Brotherhood will present the program. Thursday's meeting will be at Mary E. Nelson's home at 10 a.m.; Friday will be a "Retreat to Pray" a time at home. The church goal is \$500.

An Associational Youth Night will be held Saturday, March 12th at 6:45 p.m. at the Ogletown Church.

The Baptist Men will meet at the church on Monday, March 14th at 7 p.m.

The WMU will have their quarterly council meeting on March 17th at 6:30 p.m. All leaders and officers are encouraged to attend.

Nursery workers for Sunday will be Bill and Shirley Carpenter. Ushers for March are Bill Carpenter and Earle Nelson.

The Associational VBS Clinic will be

held Saturday, March 19th from 9-12 noon at the Friendship Church. All those who are and can work in VBS this summer are encouraged to attend this clinic for ideas and help.

If you are new in the community and without a church home, why not visit us this Sunday. Sunday School begins at 9:45 a.m. with a class for every age. Morning Worship is at 11 a.m. with nursery for 3 yr. olds and under. Evening Worship is at 7 p.m.

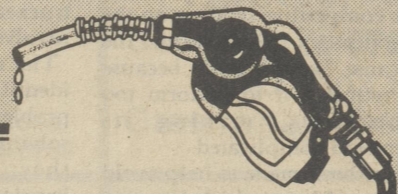
Happy Birthday wishes go out to Davy Reisinger, Penny Dennis and Sudje Lilly.

"Then cometh Simon Peter following him, and went into the sepulchre, and seeth the linen clothes lie." John 20:6

All four gospels relate that Jesus' body was placed in the tomb on Friday and that it was empty on Sunday. They are incredible documents. The empty tomb constitutes one of the strongest proofs of Jesus' bodily resurrection.

STELLER'S MARKET

Dorman Street, Harrington, DE



CONSTRUCTION for our new gasoline island will start on Monday, February 29th and will continue through March 28th.

THE north end of the parking lot will be closed.

BUSINESS as usual Monday thru Sunday 7 a.m. - 10 p.m.

WE apologize for the inconvenience and thank you for your patience and understanding.



TAKE A LOOK!

Chances are you'll find exactly what you're looking for in the...
Classified Section

CLASSIFIED RATES
ALL CLASSIFIEDS: \$2.00 for 15 words or less. 10¢ for each additional word.
LEGAL NOTICE/PUBLIC NOTICE: \$3.20 per column inch.
DEADLINE FOR INSERTION AND CANCELLATION: Monday, 12 Noon.
ALL CLASSIFIEDS MUST BE PAID IN ADVANCE.
MAIL YOUR AD WITH YOUR CHECK TO: The Harrington Journal, P.O. Box 239, Harrington, DE 19952. (302) 398-3206.

CORRECTIONS

READ YOUR AD THE FIRST DAY IT APPEARS

Any corrections to be made must be called in from 8 a.m. to 9 a.m., the day after your ad appears. One (1) extra insertion will be made at no charge for an error, not the fault of the advertiser. The Harrington Journal WILL NOT be responsible for more than one incorrect insertion.

Services

Life Time plastic water well. Call Ken Wood at Life Time Well Drilling, 301-479-0397.

Typesetting, layout & composition services. Small and large jobs. Professional results. Quality work. Harrington Journal. 302-398-3206.

BUSINESS CARDS

Raised lettering, most colored printing at no extra charge. Most logos and cuts no extra charge. Min. order 500. Quality printing. Guaranteed. Harrington Journal. Stop in to see samples and prices.

Help Wanted

Child caretaker for infant twins needed in my home in Felton area. Daytime hours with weekends and holidays off. Dependable transportation a must. Child care experience and references required. Call 284-0157 anytime to arrange for interview.

Wanted: Experienced sewing machine operators, 51 Clark St. (old Aetna Building), Harrington.

For Sale

1982 14x56 Buddy Mobile Home. Many extras! \$8,500 negotiable. Call Mark 398-3736.

350 Buick motor \$175; Olds and Chevy parts for sale. Call after 5:00. 398-9509 ask for Donald.

Autos for Sale

1969 Camaro - 327 cu. in. Recently rebuilt. Runs good. Needs body work. \$1,600 neg. 335-3569 after 5 p.m.

1972 Datsun station wagon. Recently tuned up. Good running condition. \$150. Call 398-3206.

For Rent

FOR RENT - 3 BR, two story. \$425 a month plus security. NOW VACANT. Call 398-3206.

Card of Thanks

I would like to thank all my friends, relatives and neighbors for their cards, flowers and phone calls while I was a patient in Milford Memorial Hospital. Also for Rev. Dore's visits and prayers.
Edith E. Baker

Many thanks for all acts of kindness at the time of loss of my mother, Agnes L. Knowles. She shall be missed by all as she was a special mother and grandmother. May God Bless each one of you for your thoughtfulness.
Sadly missed,
Eleanor Vincent and Family

Legal Notice

LEGAL NOTICE

The Kent County Board of Assessment is required by law to hold Appeal Hearings between April 1 and April 15 each year. For the convenience of the Kent County taxpayer, the Board of Assessment will start hearing appeals immediately. This is intended to minimize the last minute rush to schedule and process appeals.
Tax year 1988/89 runs from June 1 through May 31. If you feel your property has been appraised for more than its "fair market value," contact the Board of Assessment Office by phone or letter. Letters of appeal must be received at the Board of Assessment Office no later than April 15, 1988 in order to be

Legal Notice

scheduled for an appeal hearing. The phone number for the Kent County Board of Assessment is 736-2141. The address is Kent County Board of Assessment, 414 Federal Street, Dover, Delaware 19901.

SHERIFF'S SALE OF VALUABLE REAL ESTATE

By virtue of a writ of Levari Facias, for the sale of land to me directed, will be exposed to public sale by way of Public Vendue at the front door of the Kent County Court House, Dover, Kent County, State of Delaware, on

THURSDAY, MARCH 10, 1988
at 10:30 A.M.

ALL that certain lot, tract, piece or parcel of land and premises, situated in the Town of Wyoming, in North Murderkill Hundred, Kent County and State of Delaware, and lying on the west side of Mechanic Street in said Town, and bounded on the west and north by lands now or formerly of John Legar, on the south by lands now or formerly of one Aldrich, and on the east by said Mechanic Street, and having a front on said Mechanic Street of fifty (50) feet and extending back with that width a distance of one hundred and fifty feet (150) and containing seventy five hundred square feet of land, be the same more or less.

AND BEING, the same lands and premises which were conveyed unto Jaime Ospina and Reynaldo Ospina by deed of Sally Lou Galp dated March 7, 1984 and which is recorded at the Office of the Recorder of Deeds in and for Kent County, Delaware at Deed Book C, Volume 39, Page 108. IMPROVEMENTS: 2 Story House Location: 28 S. Mechanics Street, Camden-Wyoming

Terms of SALE: 20% day of sale and the balance on APRIL 5, 1988

Sale subject to confirmation by Superior Court and also subject to a 2% Delaware Realty Tax: 1% to be paid by Seller and 1% by the Purchaser.

Seized and taken in execution as the property of: JAIME OSPINA will be sold by

CARL M. WRIGHT,
Sheriff

Sheriff's Office
Dover, Delaware 313-9

SHERIFF'S SALE OF VALUABLE REAL ESTATE

By virtue of a writ of Levari Facias, for the sale of land to me directed, will be exposed to public sale by way of Public Vendue at the front door of the Kent County Court House, Dover, Kent County, State of Delaware, on

THURSDAY, MARCH 10, 1988
at 10:30 A.M.

NO. 1 ALL that two certain small lots, tracts, pieces or parcels of land situated in the town of Milford, Kent County and State of Delaware, and lying on the South side of Oliver Lane and more particularly described as follows:

BEGINNING at a point in the South line of Oliver Lane fifty feet distance from the point in the South line of Oliver Lane which is a corner for other lands of the Grantor and lands now or formerly of William T. Henry, thence running with the South line of said Oliver Lane from said beginning point a distance of twenty-five feet to a point in the South line of said Oliver Lane, a corner for these lands and lands of William McKnatt, deceased; thence in a Southerly course, a distance of one hundred seven feet to land or meadow now or formerly of Benjamin F.B. Woodall; thence in a Westerly course with the line of said Woodall lands, a distance of twenty-five feet to a point, a corner for these lands and other lands of the Grantor; thence in a Northerly direction with the other lands of the Grantor; a distance of one hundred seven feet back to the place of beginning, be the contents thereof whatsoever they may.

NO. 2 ALL THAT CERTAIN small lot, tract, piece or parcel of land situated on the Southerly side of Oliver Lane in the town of Milford, Kent County and State of Delaware, and more particularly described as follows:

BEGINNING at a point in the South line of said Oliver Lane, said point being a corner for these lands and for Parcel No. 1 hereinbefore described; thence in an Easterly direction along and with the South line of said Oliver Lane, said point being a corner for these lands and lands about to be conveyed unto William Hayes Fountain, thence in a Southerly direction, a distance of one hundred seven feet to the line of lands now or formerly of Benjamin F.B. Woodall; thence in a Westerly direction with the line of said Woodall lands, a distance of twenty-five feet to a point, a corner for these lands and Parcel No. 1 hereinbefore described; thence in a Northerly direction along and with the line of Parcel No. 1, a distance of one hundred seven feet to the place of beginning, be the contents thereof whatsoever they may.

AND BEING THE same lands and premises conveyed in deed of Mitchell Alphonso Curry and dated August 19, 1968 and recorded in the Office of the Recorder of Deeds in and for Kent County and State of Delaware in Deed Book I, Volume 25, Page 65 which description is herein incorporated and otherwise known as 408 N.E. Fourth Street, Milford, Delaware.

IMPROVEMENTS: 1 Story House Location: 408 N.E. Fourth Street, Milford

Terms of SALE: 20% day of sale and the balance on APRIL 5, 1988

Sale subject to confirmation by Superior Court and also subject to a 2% Delaware Realty Tax: 1% to be paid by Seller and 1% by the Purchaser.

Seized and taken in execution as the property of: Estate of Edith M. Curry, By & Through her Executrix Ruth M. Ross, Ruth M. Ross, as Executrix of the Estate of Edith M. Curry, Gary S. Curry & Michelle A. Tiec will be sold by

CARL M. WRIGHT,
Sheriff

Sheriff's Office
Dover, Delaware 313-9

SHERIFF'S SALE OF VALUABLE REAL ESTATE

By virtue of a writ of Levari Facias, for the sale of land to me directed, will be exposed to public sale by way of Public Vendue at the front door of the Kent County Court House, Dover, Kent County, State of Delaware, on

THURSDAY, MARCH 10, 1988
at 10:45 A.M.

ALL that certain piece, parcel and tract of land located in East Dover Hundred, Kent County and State of Delaware, being bounded on the north by Lot 26, on the east by the westerly road right-of-way line of Chenault Court, on the south by Lot 28 and on the west by Lot 29, and being all of Lot 27, General's Greene Subdivision, Section 1, in accordance with a survey by MCA Engineering Corporation, Engineers and Land Surveyors as shown on Sheet 3 of 3 of the Record Subdivision Plan of General's Greene Section 1, dated January 15, 1976, latest revision dated October 20, 1976, as recorded among the Land Records of Kent County in Plat Book 13, Page 32, and a more recent survey by MCA Engineering Corporation, dated June 10, 1977, and more particularly described as follows, to-wit:

BEGINNING for the same at a common corner for the lands herein described and Lot 28, said point being on the westerly road right-of-way line

Legal Notice

Chenault Court, twenty-six (26) feet wide, and finally, said point being located North 30 degrees 59 minutes 17 seconds West 32.00 feet from the point of tangency of a fillet at the intersection of the said Chenault Court and General's Way, twenty-six (26) feet wide; thence, from said point of beginning so fixed leaving the said westerly road right-of-way line of Chenault Court, with and binding on the common line of the said Lot 28 South 59 degrees 00 minutes 43 seconds West 103.00 feet to a point on the common line for these lands and Lot 29; thence, leaving the common line of the said Lot 28, with and binding on the common line of the said Lot 29 North 30 degrees 59 minutes 17 seconds West 20.00 feet to a common corner for these lands and Lot 26; thence, leaving the common line of the said Lot 29, with and binding on the common line of the said Lot 26 North 59 degrees 00 minutes 43 seconds East 103.00 feet to a point on the said westerly road right-of-way line of Chenault Court, thence, leaving the common line of the said Lot 26, with and binding on the said westerly road right-of-way line of Chenault Court South 30 degrees 59 minutes 17 seconds East 20.00 feet to the point of beginning, containing 2,060.00 square feet of land more or less.

IMPROVEMENTS: 2 Story House Location: 236 Chenault Court, Lot 27, Dover

Terms of SALE: 20% day of sale and the balance on APRIL 5, 1988

Sale subject to confirmation by Superior Court and also subject to a 2% Delaware Realty Tax: 1% to be paid by Seller and 1% by the Purchaser.

Seized and taken in execution as the property of: GERARD R. VIOLETTE & RENA F. VIOLETTE will be sold by

CARL M. WRIGHT,
Sheriff

Sheriff's Office
Dover, Delaware 313-9

SHERIFF'S SALE OF VALUABLE REAL ESTATE

By virtue of a writ of Levari Facias, for the sale of land to me directed, will be exposed to public sale by way of Public Vendue at the front door of the Kent County Court House, Dover, Kent County, State of Delaware, on

TUESDAY, MARCH 22, 1988
at 10:30 A.M.

ALL that part or parcel of land located in East Dover Hundred, Kent County, State of Delaware, and lying on the Easterly side of County Road #164 and being a portion of the Virgil Parker Lands and being more particularly described as follows:

BEGINNING at a nail in the center line of said County Road #164, at a point approximately 1713.5 feet, more or less, from the intersection of County Roads 100 and 164; thence with the center line of said County Road #164, North 33 degrees West 200.0 feet to a point; thence North 57 degrees East 455.6 feet to a pipe; thence South 33 degrees East 200.0 feet to another pipe; thence South 57 degrees West 435.6 feet to the place of beginning and containing 2.0 acres of land, more or less.

AND being the same land conveyed unto the parties of the first part by deed of even date herewith from the parties of the second part and recorded in the office of the Recorder of Deeds in and for Kent County in Deed Record Book F, Volume 42, Page 152.

IMPROVEMENTS: 2 Story House Location: R.D. 2, Box 114AA, Dover

Terms of SALE: 20% day of sale and the balance on APRIL 5, 1988

Sale subject to confirmation by Superior Court and also subject to a 2% Delaware Realty Tax: 1% to be paid by Seller and 1% by the Purchaser.

Seized and taken in execution as the property of: ROBERT MASON & IRIS R. SPICER will be sold by

CARL M. WRIGHT,
Sheriff

Sheriff's Office
Dover, Delaware 313-16

SHERIFF'S SALE OF VALUABLE REAL ESTATE

By virtue of a Writ of Levari Facias, for the sale of land to me directed, will be exposed to public sale by way of Public Vendue at the front door of the Kent County Court House, Dover, Kent County, State of Delaware, on

TUESDAY, APRIL 12, 1988
at 10:30 A.M.

For attachment and sale of lot number 11, Retreat Subdivision as same is more fully appears in Plot Book 14, Page 31 and plot Book 14, Page 92, being the same lands and premises as conveyed unto Eastern Shore Builders, Inc., by deed of Fox Hall Plantation Company, by deed dated December 8, 1985 and recorded in the office of the Recorder of Deeds in and for Kent County, State of Delaware in Deed Record Book M, Volume 41, Page 54.

IMPROVEMENTS: None Location: R.D. 2, Box 97-TT, Camden

Terms of SALE: 20% day of sale and the balance on MAY 2, 1988

Sale subject to confirmation by Superior Court and also subject to a 2% Delaware Realty Tax: 1% to be paid by the Seller and 1% by the Purchaser.

Seized and taken in execution as the property of: EASTERN SHORE BUILDERS, INC. will be sold by

CARL M. WRIGHT,
Sheriff

Sheriff's Office
Dover, Delaware 313-23

Legal Notice

on: MAY 2, 1988
Said subject to confirmation by Superior Court and also subject to a 2% Delaware Realty Tax: 1% to be paid by the Seller and 1% by the Purchaser.

Seized and taken in execution as the property of: IN THE MATTER OF THE Estate of Dorothy R. Harrington will be sold by:

CARL M. WRIGHT,
Sheriff

Sheriff's Office
Dover, Delaware 313-23

SHERIFF'S SALE OF VALUABLE REAL ESTATE

By virtue of a writ of Levari Facias, for the sale of land to me directed, will be exposed to public sale by way of Public Vendue at the front door of the Kent County Court House, Dover, Kent County, State of Delaware, on

THURSDAY, APRIL 7, 1988
at 10:45 A.M.

ALL THAT certain farm, tract and parcel of land situated in South Murderkill Hundred, Kent County and State of Delaware, lying on the public road leading from Felton to Sandown-Petersburg Road, adjoining lands now or formerly of Laura Longfellow, lands now or late of Uriah H. Sipple, lands now or formerly of Charles Sipple, lands now or formerly of Ezekiel Dill, lands formerly known as the Row or Meredith Farm, now or formerly of Walter Salomon, lands now or late of G.P. Edwards, and lands of others, and containing seventy (70) acres of land, be the same, more or less, having as improvements thereon a two-story frame dwelling, barn, stable, and other outbuildings.

IMPROVEMENTS: 2 Story House, large chicken house, less to-wit:

Terms of SALE: 20% day of sale and the balance on MAY 2, 1988

Sale subject to confirmation by Superior Court and also subject to a 2% Delaware Realty Tax: 1% to be paid by Seller and 1% by the Purchaser.

Seized and taken in execution as the property of: JAMES L. HURD & FRANCES HURD will be sold by

CARL M. WRIGHT,
Sheriff

Sheriff's Office
Dover, Delaware 313-23

SHERIFF'S SALE OF VALUABLE REAL ESTATE

By virtue of a writ of Levari Facias, for the sale of land to me directed, will be exposed to public sale by way of Public Vendue at the front door of the Kent County Court House, Dover, Kent County, State of Delaware, on

THURSDAY, APRIL 7, 1988
at 11:00 A.M.

ALL that certain lot, piece or parcel of land with the improvements thereon erected situate in the City of Dover, Kent County, State of Delaware, lying on the West side of South New Street between Division and Reed Streets; being bounded on the East by South New Street, on the South by lands of Kent Apartments, on the West by lands of Edith Hardcastle and on the North by lands of Earle Faulkner Estate; and being more particularly described in accordance with a recent survey by Earle D. Smith, Professional Land Surveyor, dated February 3, 1982, as follows, to-wit:

BEGINNING at a pipe in the West line of South New Street at a corner for this lot and for lands of Earle Faulkner Estate, said point of Beginning being South 10 degrees, 30 minutes East 120.00 feet south of the intersection of the West line of South New Street with the South line of Division Street; thence running from said point of Beginning with the West line of South New Street, South 10 degrees 30 minutes East 60.00 feet to a nail in a wood post at a corner for this lot and for lands of Kent Apartments; thence with said Kent Apartments South 80 degrees West 151.50 feet to a pipe at a corner for this lot and for lands of Edith Hardcastle, in line of said Kent Apartments; thence with said Hardcastle lands, North 10 degrees 30 minutes West 60.00 feet to a pipe at a corner for this lot and for lands of Earle Faulkner Estate; thence with said Faulkner Estate North 80 degrees East 151.50 feet to the place of BEGINNING; and containing 9090 square feet of land, be the same more or less. (BEING KNOWN AS 16 SOUTH NEW STREET).

BEING the same lands and premises which Nicholas Saroukos, Executor of the Estate of Michael M. Writ of Levari Facias, dated the 12th day of February, 1982 and of record at the Office of the Recorder of Deeds in and for Kent County in Deed Book U, Volume 36, Page 70, did grant and convey unto Marie Sherfield, now known as Marie Ospina.

IMPROVEMENTS: 2 Story House, garage & shed

Terms of SALE: 20% day of sale and the balance on MAY 2, 1988

Sale subject to confirmation by Superior Court and also subject to a 2% Delaware Realty Tax: 1% to be paid by Seller and 1% by the Purchaser.

Seized and taken in execution as the property of: MARIE OSPINA will be sold by

CARL M. WRIGHT,
Sheriff

Sheriff's Office
Dover, Delaware 313-23

SHERIFF'S SALE OF VALUABLE REAL ESTATE

By virtue of a Writ of Levari Facias, for the sale of land to me directed, will be exposed to public sale by way of Public Vendue at the front door of the Kent County Court House, Dover, Kent County, State of Delaware, on

THURSDAY, APRIL 7, 1988
at 11:15 A.M.

ALL that certain lot, piece or parcel of land with the improvements thereon erected, situate in South Murderkill Hundred, County of Kent and State of Delaware, lying on the South side of Hackberry Drive, a short distance Northwest of Sumac Drive, being bounded on the North by Hackberry Drive, on the East by Lot #59, on the South in part by Lot #57 and in part by Lot #56 and on the West by Lot #61, and being all of Lot #60 as laid out in the WOODBURY SUBDIVISION, and being more particularly described according to a recent survey by Robert Larimore, dated December 26, 1983, as follows, to-wit:

BEGINNING at a point in the South line of Hackberry Drive at a corner for this lot and for Lot #59, said point of Beginning being the following two (2) courses and distances from the Northwesterly end of a 25 foot radius junction curve joining the East line of Sumac Drive with the Southerly line of Hackberry Drive: (1) running with the Southerly line of Hackberry Drive, North 58° 20' West 204.72 feet; thence (2) running in a Northwesterly direction curving to the left on the arc of a circle having a radius of 255 feet, an arc distance of 18.73 feet to the place of Beginning; thence running from said point of Beginning with Lot #59, South 27° 26' West, 154.58 feet to a point in line of Lot #57; thence running in part with said Lot #57 and in part with Lot #56, North 82° 27' 05" West, 51.03 feet to a corner for this lot and for Lot #61; thence running with said Lot #61, North 05° 50' 34" West, 157.61 feet to a point in the South line of Hackberry Drive; thence running with said South line of Hackberry Drive in an Easterly direction curving to the right on the arc of a circle having a radius of 255 feet, an arc distance of 112.39 feet to the point and place of BEGINNING.

Legal Notice

Be the contents thereof what they may.

BEING the same lands and premises which Douglas K. Neiferd, by Indenture dated the 12th day of November, 1986 and of record at the Office of the Recorder of Deeds at Kent County, Delaware, in Deed Book X-12, Page 145, did grant and convey unto Anita E. Neiferd.

IMPROVEMENTS: 1 Story House Location: 60 Hackberry Drive, Canterbury

Terms of SALE: 20% day of sale and the balance on MAY 2, 1988

Sale subject to confirmation by Superior Court and also subject to a 2% Delaware Realty Tax: 1% to be paid by the Seller and 1% by the Purchaser.

Seized and taken in execution as the property of: DOUGLAS KEITH NEIFERD & ANITA E. NEIFERD, his wife & ANITA E. NEIFERD, individually will be sold by:

CARL M. WRIGHT,
Sheriff

Sheriff's Office
Dover, Delaware 313-23

SHERIFF'S SALE OF VALUABLE REAL ESTATE

By virtue of a Writ of Levari Facias, for the sale of land to me directed, will be exposed to public sale by way of Public Vendue at the front door of the Kent County Court House, Dover, Kent County, State of Delaware, on

TUESDAY, APRIL 5, 1988
at 10:45 A.M.

ALL that certain piece, parcel or tract of land situated in West Dover Hundred, Kent County, State of Delaware, lying on the north side of old County Road #183 and lying northwest of but not adjacent to County Road #185 between Maryland and County Road #103, being bounded on the southwest by old County Road #183, on the northwest by lands of others, on the northeast by lands of Walter Sipple, now of others, and on the southeast by lands of Roman D. Miller and by lands of others and being more particularly described as follows, to-wit:

BEGINNING at a point in County Road #183 at a corner for this parcel and for lands of Miller, said point of beginning being 810 feet as measured in a northwesterly direction from the intersection of County Road #133 with the center of County Road #163; thence running from said point of beginning with County Road #132 North 38 degrees 13 minutes 21 seconds West 133.61 feet to a corner for this parcel and for lands of others; thence running with lands of others and with a ditch on the following two courses, (1) North 61 degrees 52 minutes East 571.31 feet; thence (2) North 53 degrees 2 minutes 12 seconds East 242.70 feet to a corner for this parcel and for lands late of Sipple

South 19 degrees East 531.78 feet to a corner for this parcel and for lands of others; thence running with lands of others on the following three courses, (1) South 11 degrees West 515.70 feet; thence (2) North 19 degrees West 113.75 feet; thence (3) South 17 degrees 51 minutes 32 seconds West 102.07 feet to a corner for this parcel and for lands of Miller; thence running with lands of Miller on the following two courses, (1) North 12 degrees 5 minutes 28 seconds West 120.55 feet; thence (2) South 61 degrees 33 minutes 19 seconds West 275.86 feet to the place of beginning and containing 10.58 acres of land be the same more or less.

Being all of the same premises which were conveyed to United States of America acting through Farmers Home Administration, the Grantor, herein by Joseph H. Borntruger and Anna J. Borntruger, his wife, by Deed dated September 9, 1982, and recorded September 17, 1982, in the office

Legal Notice

of Recorder of Deeds, Kent County, State of Delaware in Deed Record K, Volume 37, Page 156.

IMPROVEMENTS: 1 Story House, garage, chicken coop, call barn Location: R.D. 1, Box 160-7, Hartly, Delaware

Terms of SALE: 20% day of sale and the balance on MAY 2, 1988

Sale subject to confirmation by Superior Court and also subject to a 2% Delaware Realty Tax: 1% to be paid by the Seller and 1% by the Purchaser.

Seized and taken in execution as the property of: MICHAEL J. BADEN AND NOEL F. BADEN will be sold by:

CARL M. WRIGHT,
Sheriff

Sheriff's Office
Dover, Delaware 313-23

Help Wanted

Wanted: A senior citizen companion to sit with an elderly lady. Serious inquiries only please. Call and leave your name and telephone number at 398-3206.

TFN-HGF

Marriage Licenses

Marriage Licenses issued by the Kent County Clerk of the Peace Office in Dover, Delaware, for the week of February 22-26, 1988:

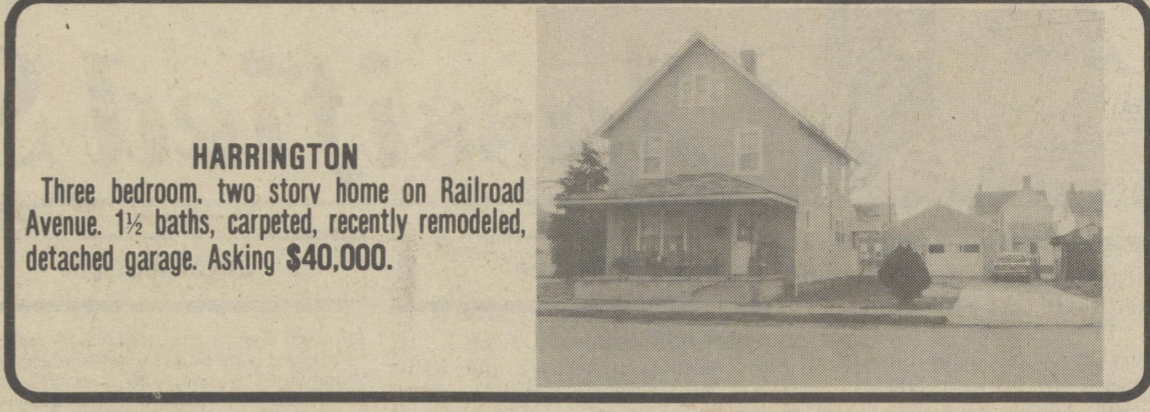
Ronald Ollie Moore and Rose Marie Collison, both of Little Creek, DE

</

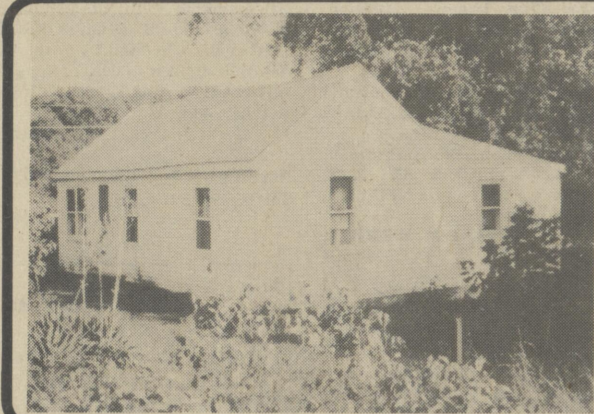
FOR SALE



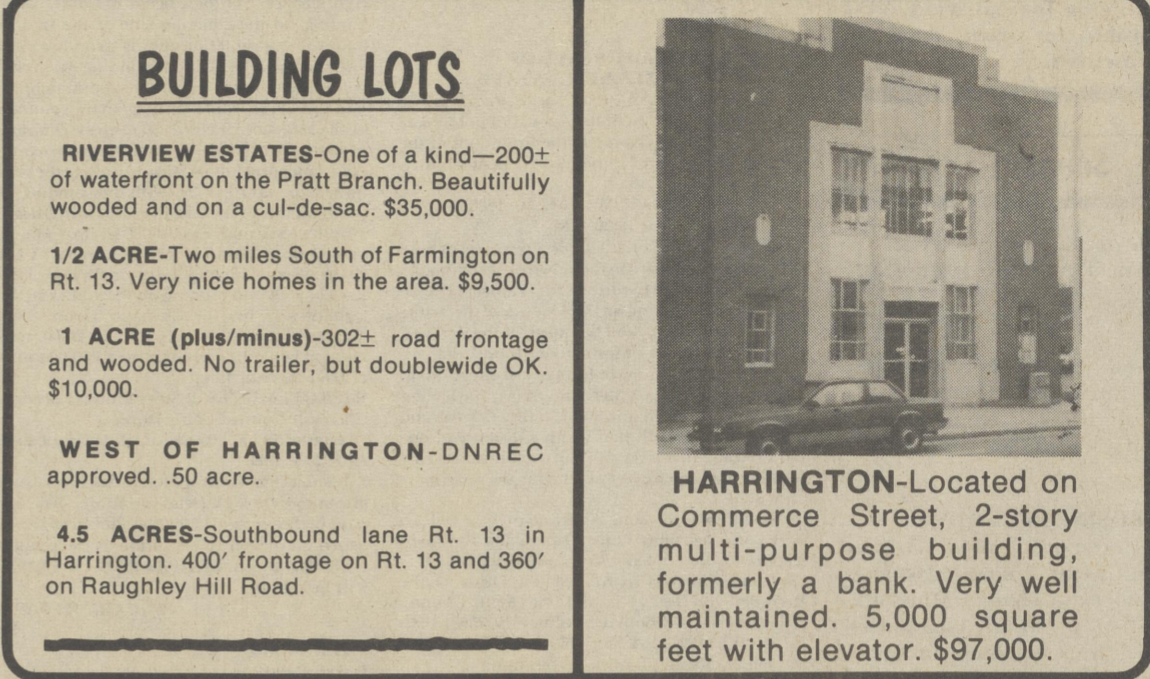
ANCIENT MILL IN HARRINGTON
 One of the oldest buildings and business in Harrington is being offered for sale. It is currently being used for seed cleaning and seed storage business. The sale is offered as a going business. Owners are retiring. Lot size is 192x294 and the building contains approximately 16,000 sq. feet.



HARRINGTON
 Three bedroom, two story home on Railroad Avenue. 1½ baths, carpeted, recently remodeled, detached garage. Asking \$40,000.



NICE 3 BEDROOM RANCHER
 located at the east edge of Harrington on Route 14. Central forced hot air oil heating system. The two car detached concrete block garage will need a new roof. Selling house and contents for under \$40,000.

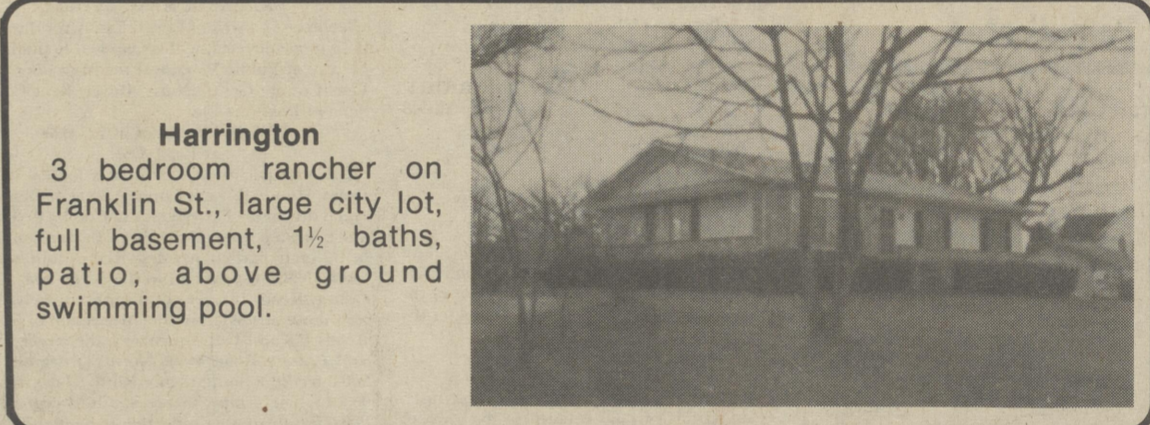


BUILDING LOTS
RIVERVIEW ESTATES—One of a kind—200± of waterfront on the Pratt Branch. Beautifully wooded and on a cul-de-sac. \$35,000.
1/2 ACRE—Two miles South of Farmington on Rt. 13. Very nice homes in the area. \$9,500.
1 ACRE (plus/minus)—302± road frontage and wooded. No trailer, but doublewide OK. \$10,000.
WEST OF HARRINGTON—DNREC approved. .50 acre.
4.5 ACRES—Southbound lane Rt. 13 in Harrington. 400' frontage on Rt. 13 and 360' on Raughley Hill Road.

HARRINGTON—Located on Commerce Street, 2-story multi-purpose building, formerly a bank. Very well maintained. 5,000 square feet with elevator. \$97,000.

HOUSES FOR RENT IN HARRINGTON

- 3 Bedrooms • 2 Baths • 7 Rooms • Central forced hot air oil heat.
- 2 Bedrooms • 1 Bath • Carpeted Up and Down • 5 Rooms • 2 Enclosed porches • Forced hot air gas heat.



Harrington
 3 bedroom rancher on Franklin St., large city lot, full basement, 1½ baths, patio, above ground swimming pool.

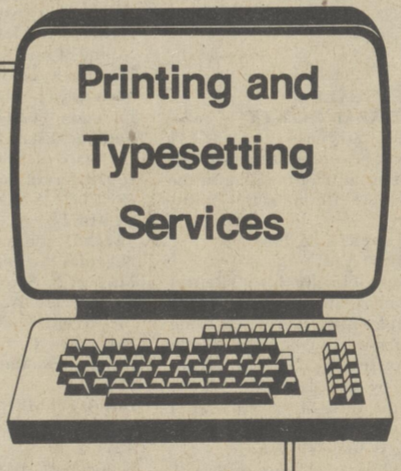
FARROW REALTY

Harry G. Farrow, Jr.
 Realtor
 398-3250 (eve.)

17 Commerce St., Harrington (302) 398-3455

The Harrington Journal

The Harrington Journal can offer you a variety in printing and typesetting services.



- Education News
 - Harness Horse News
 - Classifieds
 - Club Reports
 - Community Calendar
 - Fire Reports
 - Engagements
 - Scholastic Sports
 - Auto Racing
- GO TEAM!!!**

- Multiple Forms
- Business Cards
- Letterheads
- Brochures
- Envelopes
- Tickets

Unmask the Possibilities of Advertising in The Harrington Journal!



Wedding Invitations
 Printed Napkins
 Announcements
 Programs



SUBSCRIPTIONS

Senior Citizen Rates:
 In State \$10.50
 Out of State \$12.00

Regular Rates:
 In State \$12.00
 Out of State \$13.50



19 Commerce Street
 Harrington, Delaware

CALL NOW! (302) 398-3206



Check your Tape Total for True Savings!



YOU'LL SAVE MORE MONEY ON MORE ITEMS WHEN YOU SHOP HERE



CAMELLIA CRINKLE CUT FRENCH FRIES

Bonus Buy **\$1.98**

5 lb. bag

WITH 1 FILLED CARD



KRAFT

MAYONNAISE

Bonus Buy **\$1.28**

32 oz. jar

SALE PRICE \$1.78

WITH 1 FILLED CARD



Bonus Buy

RECEIVE 1 BONUS BUY STAMP PER \$5 PURCHASE. 6 BONUS BUYS FILL A CARD. EACH SPECIAL REQUIRES 1 FILLED BONUS BUY CARD EXCEPT WHERE NOTED.

FABRIC SOFTNER

SNUGGLE

Bonus Buy

98¢

64 oz.

SALE PRICE \$1.48

WITH 1 FILLED CARD



REG., BERRIES or PEANUT BUTTER

CAP'N CRUNCH

Bonus Buy **\$1.38**

15 oz. pkg.

SALE PRICE \$1.88

WITH 1 FILLED CARD



BONUS SIZE - PETER PAN PEANUT BUTTER

Bonus Buy **\$1.38**

SALE PRICE \$1.88

•CREAMY •CRUNCHY

WITH 1 FILLED CARD



MINUTE RICE

Bonus Buy

68¢

SALE PRICE \$1.18

WITH 1 FILLED CARD

MEATLAND
The Definite Difference

Your **Camellia** Stores

FOOD CITY
The Saving Difference

We Offer Prime Quality...For Less



**EMPRESS SLICED - CRUSHED
CHUNK PINEAPPLE**

Bonus Buy

SALE PRICE
58¢

8¢

20 oz.

WITH 1 FILLED CARD



**CHINCOTEAGUE - NEW ENGLAND
CLAM CHOWDER**

15
oz.

98¢

WITH 1 FILLED CARD



**MT. OLIVE
FRESH
KOSHER DILLS**

Bonus Buy

SALE PRICE
\$1.00

\$1.48

46 oz.

WITH 1 FILLED CARD

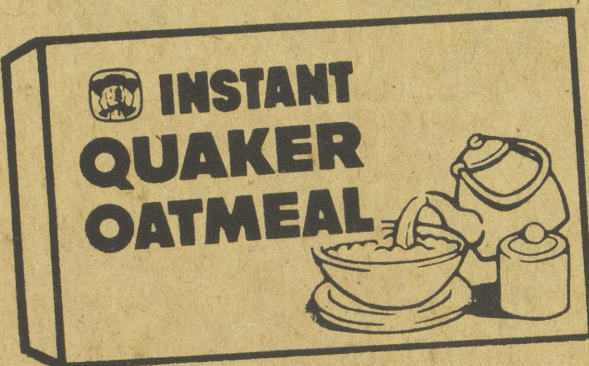
FOOD CITY
The Saving Difference



MEATLAND
The Definite Difference

We Offer Prime Quality...For Less

LIBBY'S CORN BEEF HASH		\$1.88
LIBBY'S BEEF STEW	24 oz.	\$1.38
LIBBY'S CHILI with BEANS	15 oz.	88¢
CHEF BOYARDEE- MINI, BEEF or CHEESE RAVIOLI	15 oz.	78¢
KRAFT- THREE VARIETIES APPLAUSE	10.7 to 15.1 oz.	\$1.28
BETTY CROCKER- TWO FLAVORS MUFFINS	17.5 to 23.5 oz.	\$1.88
BETTY CROCKER- FOUR FLAVORS MICROWAVE CAKE MIX	10.25 to 10.75 oz.	\$1.28
LOUISIANA HOT SAUCE	12 oz.	78¢
SWISS MISS HOT COCOA MIX	12 pk.	98¢
MT. OLIVE SWEET GERKINS or BREAD and BUTTER CHIPS	16 to 24 oz.	\$1.48
25¢ OFF IVORY LIQUID	22 oz.	\$1.03



- REGULAR • APPLE/CINNAMON
- MAPLE/BROWN SUGAR • VARIETY
- RAISIN SPICE

SALE PRICE \$1.48

INSTANT OATMEAL

Bonus Buy

98¢

12 to
12.5 oz.

WITH 1 FILLED CARD



Bonus Buy

sale price
\$1.88

Half
gal.

**LIGHT N' LIVELY
ICE MILK**

\$1.38

WITH 1 FILLED CARD

FROM OUR DELI

**KAHN'S
HONEY HAM**

\$1.58

1/2 lb.

**KAHN'S BEEF
BOLOGNA**

98¢

1/2 lb.

**KAHN'S OLD
FASHION LOAF**

\$1.28

1/2 lb.

**NEW YORKER PROVOLONE
CHEESE**

98¢

1/2 lb.

**FRESH GOLDEN
ROLLS**

\$1.08

8 pack
14 oz.

**GLAZED
DONUTS**

\$1.98

doz.

**CHEESE
DANISH**

2/98¢

5 oz.

**2-LAYER CHOCOLATE
ICED CAKE**

\$4.98

32 oz.



WISK

LIQUID
DETERGENT

Bonus Buy

SALE PRICE
\$2.98

\$1.48

64 oz.

WITH 1 FILLED CARD



ALL

LIQUID DETERGENT

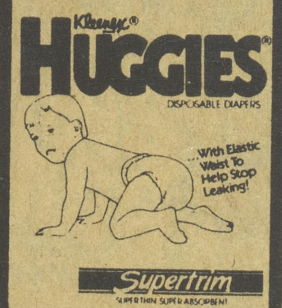
Bonus Buy

SALE PRICE
\$2.48

\$1.98

64 oz.

WITH 1 FILLED CARD



HUGGIES

SUPERTRIM - MEDIUM - LARGE

Bonus Buy

SALE PRICE
\$9.98

\$9.48

32 or
48 ct.

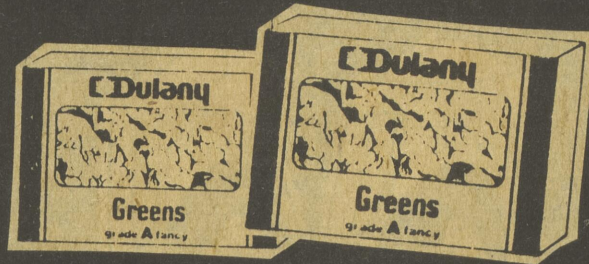
WITH 1 FILLED CARD



**BREYERS
ICE CREAM**

Bonus Buy
\$1.98
SALE PRICE \$2.48
half gal.

WITH 1 FILLED CARD

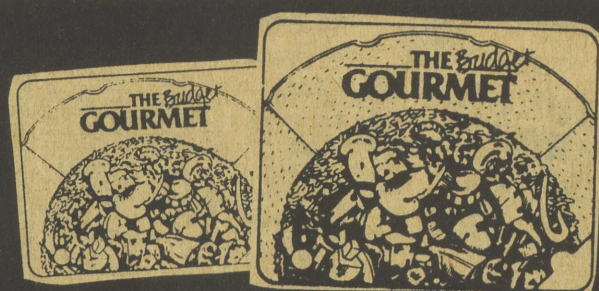


DULANY GREENS

•LEAF KALE •CUT TURNIPS
•CHOPPED COLLARD •HANOVER SALAD

Bonus Buy
2/38¢
SALE PRICE 2/88¢
10 oz.

WITH 1 FILLED CARD



BUDGET GOURMET

•LINGUINI SHRIMP •SIRLOIN CT. VEG.
•PEPPER STEAK RICE •SW. SO. CHICK.

Bonus Buy
98¢
SALE PRICE \$1.48
10 oz.

WITH 1 FILLED CARD

**TROPICANA - REG. or HOME STYLE
ORANGE JUICE**

Bonus Buy
\$1.18

SALE PRICE \$1.68

64 oz. ctn.

WITH 1 FILLED CARD

**TROPICANA - PURE PREMIUM
ORANGE JUICE**

Bonus Buy
\$1.78

SALE PRICE \$2.28

64 oz. ctn.

WITH 1 FILLED CARD

**TROPICANA - ORANGE JUICE or
GRAPEFRUIT JUICE**

Bonus Buy
\$1.48

SALE PRICE \$1.98

64 oz. glass

WITH 1 FILLED CARD

FOOD CITY
The Saving Difference



MEATLAND
The Definite Difference

We Offer Prime Quality...For Less

- 30° OFF LABEL PINE POWER 28 oz. **\$1.88**
- SUNLIGHT - AUTOMATIC DISH LIQUID 40 oz. **\$1.48**
- PRE-PRICED 2/99° SHIELD BATH SOAP 2 pk. **88¢**
- AEROSOL - BEHOLD - LEMON FURNITURE POLISH 9 oz. **\$1.48**
- BLUE or GREEN AUTO VANISH 12 oz. **\$1.38**
- GLASS CLEANER WINDEX TRIGGER 22 oz. **\$1.58**
- VINEGAR or LEMON WINDEX TRIGGER 22 oz. **\$1.68**
- THREE VARIETIES RENUZIT ROOMMATE 4.4 oz. **\$1.58**
- 35° OFF - SHEETS SNUGGLES 40 ct. **\$1.88**
- DISPOSABLE BIG SHAVERS 10 pk. **\$1.48**
- GREEN or BLUE VANISH - DROP-INS 1.7 oz. **88¢**



MR. P'S PIZZA
•CHEESE •SAUSAGE
•PEPPERONI •COMBO

Bonus Buy
8¢
SALE PRICE 68¢
9 oz.

WITH 1 FILLED CARD



CAMELLIA VEGETABLES

•CAULI •BEANS •CARROTS •BROC. •LIMAS

Bonus Buy
38¢
SALE PRICE 88¢
16 oz.

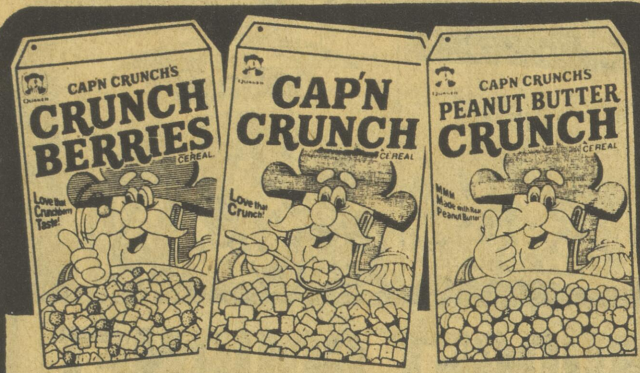
WITH 1 FILLED CARD



Mrs. Paul's CRISPY CRUNCHY
FILLETS - 7 pk.
STICKS - 16 pk.

Bonus Buy
\$1.48
SALE PRICE \$1.98

WITH 1 FILLED CARD



CAP'N CRUNCH

•REG. •PEANUT BUTTER •BERRIES

Bonus Buy
SALE PRICE \$1.38
15 to 16 oz.

WITH 1 FILLED CARD



SNUGGLE FABRIC SOFTENER

Bonus Buy
SALE PRICE 98¢
64 oz.

WITH 1 FILLED CARD



PETER PAN - BONUS - CREAMY CRUNCHY PEANUT BUTTER

Bonus Buy
SALE PRICE \$1.38
22 oz.

WITH 1 FILLED CARD

FOOD CITY

The Saving Difference



MEATLAND

The Definite Difference

We Offer Prime Quality...For Less



GLAD - LARGE 15 ct. **98¢**

GLAD - 3 PLY 10 ct. **98¢**

HEALTH-BEAUTY AIDS

REGULAR OR EXTRA BODY **AQUAMARINE SHAMPOO** 15 oz. **98¢**

NOXEMA-REGULAR **SHAVE CREAM** 11 oz. **\$1.98**

DAIRY

KRAFT - THREE VARIETIES **CREAM CHEESE** 8 oz. **\$1.18**

PILLSBURY - BUTTER • COUNTRY **BUTTERMILK BISCUITS** 4/pk. **78¢**

PET NEEDS

DRY - SEA **KOZY KITTEN** 3.5 lb. **\$1.48**

HEAT-N'-SWEET **CAT LITTER** 22 lb. **\$1.88**



ASSORTED

SALE PRICE 68¢ 100 ct.

DELTA FAMILY

NAPKINS

Bonus Buy

18¢

WITH 1 FILLED CARD



TOWEL

TOWELS

Bonus Buy

SALE PRICE 2/98¢

single roll

DELTA TOWELS

48¢

WITH 1 FILLED CARD



SALE PRICE 88¢

Bonus Buy

BATH TISSUE

38¢

4 pk.

WITH 1 FILLED CARD



MINUTE

RICE

Bonus Buy

SALE PRICE \$1.18

68¢

14 oz.

WITH 1 FILLED CARD



PEPSI-COLA

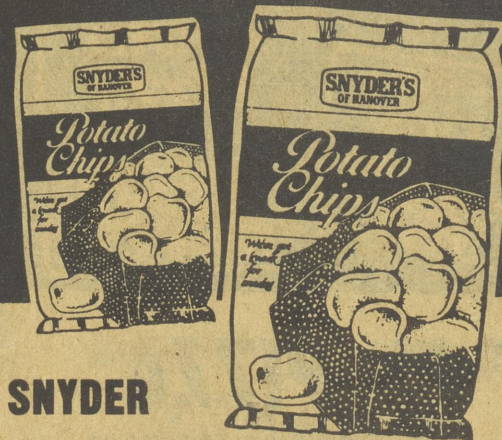
Bonus Buy

SALE PRICE 98¢

48¢

2 liter

WITH 1 FILLED CARD

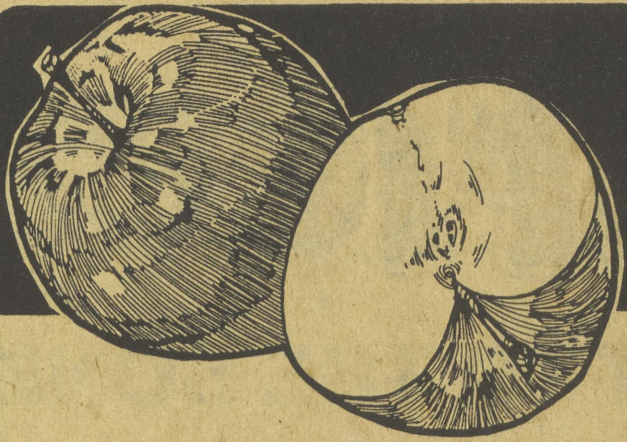


SNYDER

POTATO CHIPS

98¢

7 1/2 oz.

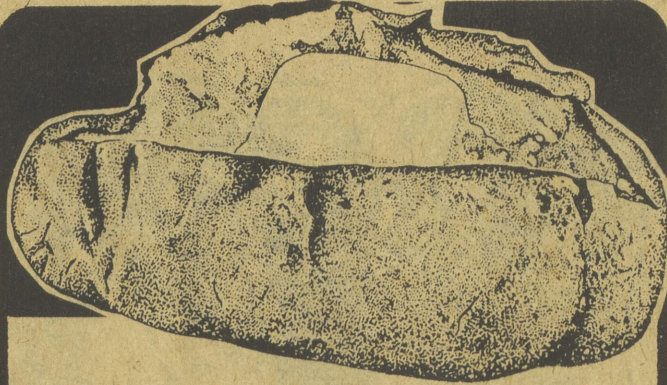


WASHINGTON STATE RED or GOLDEN
DELICIOUS

APPLES

lb.

48¢



BONUS BUY WITH 1 FILLED CARD

**IDAHO BAKING
POTATOES**

5 lb.
bag

48¢



**FRESH GREEN
BROCCOLI**

large
bunch

78¢

Shop Anywhere! We Guarantee - You can't find

Fresher Produce!

...and you'll really enjoy the greater selection to choose from!



**THOMPSON SEEDLESS
SWEET WHITE**

GRAPES

lb.

98¢

FOOD CITY
The Saving Difference

Your **Camellia** Stores

MEATLAND
The Definite Difference

We Offer Prime Quality...For Less



BAKERY-BREAD

**CALIFORNIA
NAVEL
ORANGES** large 48's
for **3/68¢**

**YELLOW
COOKING
ONIONS** 3 lb. bag
98¢

**TANGY
RED
RADISHES** 6 oz. pkg.
18¢

**FRESH GREEN
BELL
PEPPERS** 2/68¢

**SOUTHERN
CURED
YAMS** 3 lb. for
/98¢

**SWEET JUICY
BLACK
PLUMS** lb. **98¢**

**SUNBEAM
ROUND TOP
BREAD** 20 oz. **88¢**

**SCHMIDT
FRUIT/CINNAMON
BUNS** 8 pk. **\$1.08**

**ENTENMANN
POPEMS and
DONUTS** **\$1.98**



**SCOPE
MOUTHWASH**

Bonus Buy
SALE PRICE
\$4.48

\$3.98

32 oz.

WITH 1 FILLED CARD



**CREST
TOOTHPASTE**

Bonus Buy
SALE PRICE
\$1.48

98¢

4.6 oz.

WITH 1 FILLED CARD



**FREE MILK*
AND COOKIES**

when you buy OREO®
Chocolate Sandwich Cookies
and HONEY MAID
GRAHAMS®

**OREO and
DOUBLE STUFF** 20 oz. **\$2.38**

GRAHAM CRACKERS **\$1.78**
• HONEY MAID • CINNAMON
• HONEY RAISINS 16 oz.

MAIL-IN OFFER
SEE NABISCO DISPLAY FOR DETAILS

FOOD CITY

The Saving Difference



MEATLAND

The Definite Difference

We Offer Prime Quality...For Less

meat prices



CUT TO THE BONE!

WHOLE BONELESS
BOTTOM ROUNDS
\$1.48
lb.

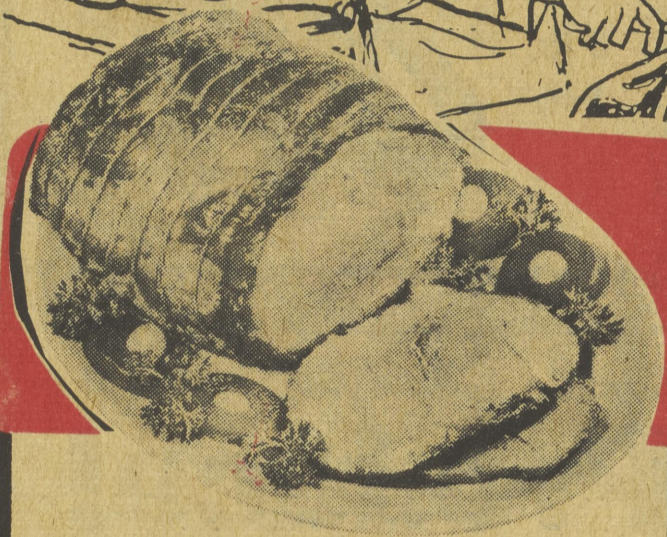
CUT TO YOUR SATISFACTION



BONELESS BEEF
CUBE STEAK

lb. **\$1.98**

FAMILY PACK



BONELESS BOTTOM
ROUND ROAST

lb. **\$1.68**



BONELESS BOTTOM
ROUND STEAK

lb. **\$1.88**

COUNTRY STYLE
SPARE RIBS

lb. **\$1.78**

SLICED QUARTER
PORK LOINS

lb. **\$1.58**

TURKEY
DRUMSTICKS

lb. **39¢**

FAMILY PACK

TURKEY
WINGS

lb. **39¢**

FAMILY PACK

TURKEY
NECKS

(Family Pack)

lb. **39¢**

KAHN'S SLICED
BACON

1-lb. pkg. **\$1.48**



FRESH

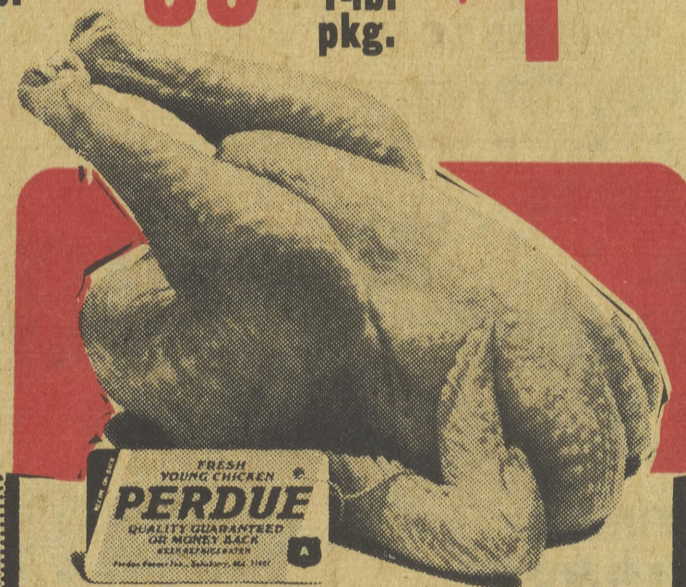
GROUND BEEF

3 lbs. or more
\$1.18
lb.



FRESH PORK
PICNICS

lb. **78¢**



PERDUE WHOLE
FRYERS

lb. **48¢**

HILLSHIRE FARM
POLISH OR BEEF
SAUSAGE

3 lb. pkg. **\$4.98**

KAHN'S LITL'
BONELESS HAM

\$2.98 lb.

KAHN'S
BRAUNSWEIGER

1-lb. pkg. **98¢**

KAHN'S MEAT OR
BEEF-BUN SIZE

FRANKS or **WEINERS** 1-lb. pkg.

\$1.68

NOW 17 STORES ON THE SHOR⁵

- S *OLD RT. 13 EXMORE, VA.
- S *CLEVELAND STREET CHINGOTEAGUE, VA.
- S *RANDOLPH AVE. CAPE CHARLES, VA.
- S *318 MAIN STREET CRISFIELD, MD.
- S *DUNNE AVENUE PARKSLEY, VA.
- S *MARYLAND AVENUE CRISFIELD, MD.
- S-D *LIBERTY PLAZA HARRINGTON, DEL.
- S *SOMERSET AVENUE PRINCESS ANNE, MD.
- S-D *SOMERSET PLAZA PRINCESS ANNE, MD.
- S-D *19 PINES PLAZA OCEAN PINES, MD.
- S-D *FOOD CITY MARKET STREET, OHANCOCK, VA.
- S-D *FOOD CITY 921 MT. HERMON RD. SALISBURY, MD.
- S-D *RT. 60 & WOODS ROAD CAMBRIDGE, MD.
- S *1402 MARKET STREET POCOMOKE, MD.
- S-D *AMES SHOPPING CTR POCOMOKE, MD.
- S-D *401 STEIN HWY SEAFORD, DEL.
- S-D *701 SALISBURY BLVD. SALISBURY, MD.
- S *OPEN SUNDAYS D IN-STORE DELI/BAKERY

PRICES GOOD MAR. 6 thru MAR. 12, 1988
NOT RESPONSIBLE FOR TYPOGRAPHICAL ERRORS



PLAY **JACKPOT**

84

LUMBER & HOME CENTER

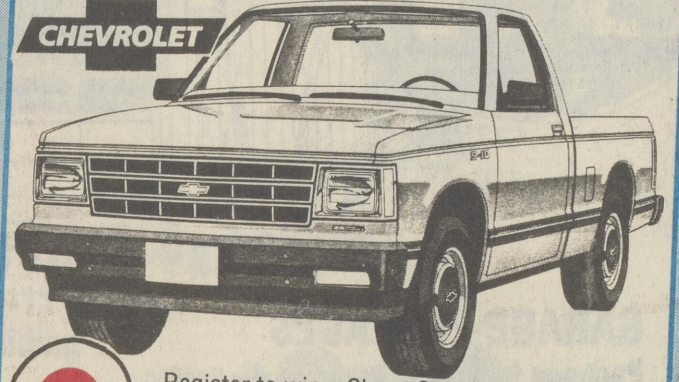
STOP IN FOR FREE!
8 PAGE PROJECT CATALOG

American Woodmark
Cabinetry Worth Looking Into

Armstrong
BETTERBILT

Camelard Mills, Inc.

WIN FREE!

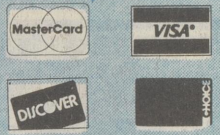


Register to win a Chevy S-10 at Georgetown store only. No purchase necessary - need not be present to win. Must be at least 18 years of age to be eligible to win. One entry per person.

Drawing to be held at the Georgetown, Delaware Store 4:00 P.M. Sunday, March 13
Winner responsible for all taxes, registration and insurance fees.

Yenkin-Majestic® WENCO USG®

FINANCING AVAILABLE
• 90 Days Same As Cash For Qualified Applicants Only.
• Subject To Credit Approval By Lender.
• Check Store For Availability.

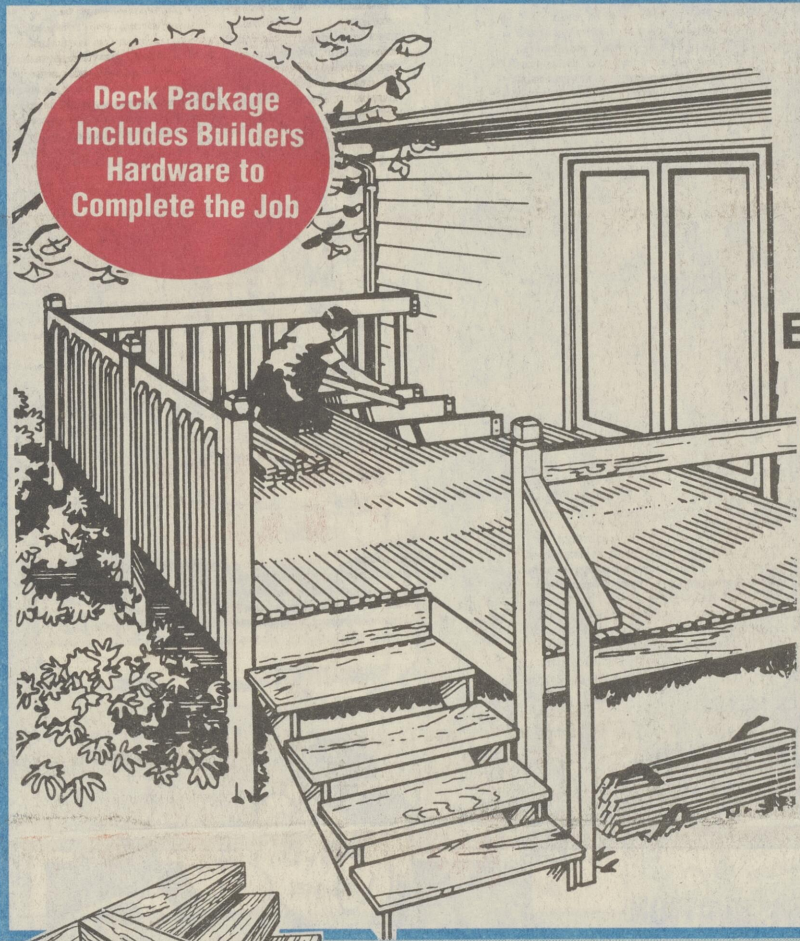


GRAND OPENING

Sale!

SALE DATES: NOW THRU SUNDAY, MARCH 13th

WE ACCEPT CHECKS



Deck Package Includes Builders Hardware to Complete the Job

Let Us Help You Custom Design Your Deck Today. FREE ESTIMATES!!

TREATED DECK PACKAGE

8'x6' (833-70-99) **\$139** each

8'x10' (834-00-99) **\$229** each

14'x10' (834-60-99) **\$339** each

16'x12' (835-00-99) **\$449** each



11 Oz. **DECKWELD ADHESIVE**
1.69 each
(659-25)

Treated Deck Accessories

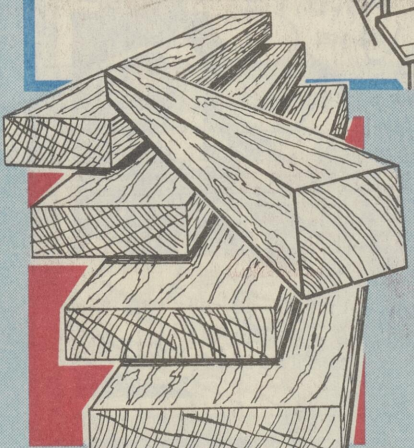
Pre-Assembled 3 1/2"x6' Sections

DECK RAILING **3984** each

4"x4" Treated **GOTHIC POST** (752-03) **484** each

Treated **DECK SPINDLES** (752-15) **249** each

5/4"x4"x12' Treated **HANDRAIL** (752-16) **584** each



PRESSURE TREATED DECKING LUMBER

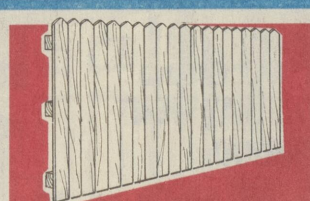
2"x4"x8' (204-08-06) **219** each

4"x4"x8' (404-08-06) **419** each

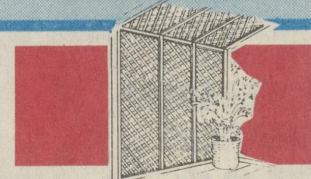


GARDEN TOOLS
Your Choice! **384** each

Hoe (661-31) Rake (661-30)
Cultivator (661-02)
Long Handle Round Point Shovel (661-26)



Treated 6'x8' **STOCKADE FENCE SECTION**
2284 each (748-72)



Treated SYP 2'x8' **LATTICE PANELS**
784 each (685-65)

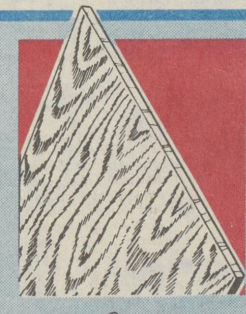
4'x8' (685-72) **12.84** each

MAC-DEK Commercial Grade Cedar DECKING BOARDS

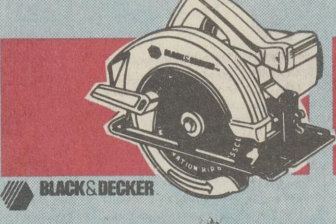
Size	8'	10'	12'
2"x6"	5.84	6.84	7.84



2"x4"x8' **Premium STUDS**
1.54 each (204-08-01)



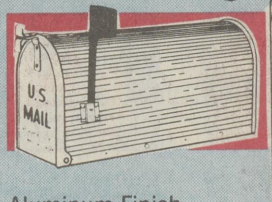
1/2"x4"x8' CDX **PLYWOOD SHEATHING**
849 each (123)



#7308 1 1/2 hp 7 1/4" (463-307) **CIRCULAR SAW**
3684 each

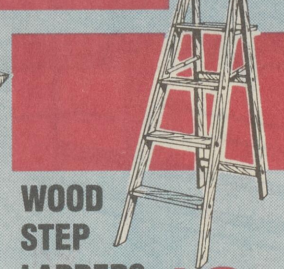


ClassiCoat® **Interior Latex WALL PAINT**
684 gallon



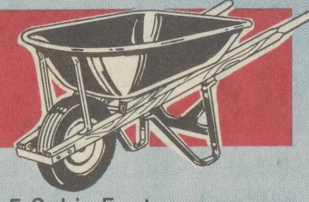
Aluminum Finish **MAILBOX** (867-219) **584** each

4'x4' Treated **MAILBOX POST** (710-88) **1284** each



WOOD STEP LADDERS
2' (593-01) **1084** each

5' (593-08) **1884** each



5 Cubic Foot (661-56) **CONTRACTOR'S WHEELBARROW**
3984 each



3"x5"x8' Treated **LANDSCAPE TIMBERS** (800) **299** each

6"x6"x8' Dipped **LANDSCAPE TIES** (302-95), (302-71) **784** each

FREE To The First 100 Customers Each Day During Our Georgetown Store Grand Opening

Thursday, March 10

BULLDOG
Bulldog Jordan® **Assorted NUTS & BOLTS**
Georgetown, Delaware Store Only

Friday, March 11

STANLEY
Powerlock **KEYTAPE**
Georgetown, Delaware Store Only

Saturday, March 12th

Vermont American® **#7307 Circular SAW BLADE**
Georgetown, Delaware Store Only

Sunday, March 13th

3 M®
1/4 Sheet **SAND PAPER**
Georgetown, Delaware Store Only

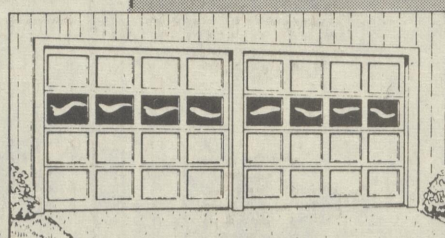
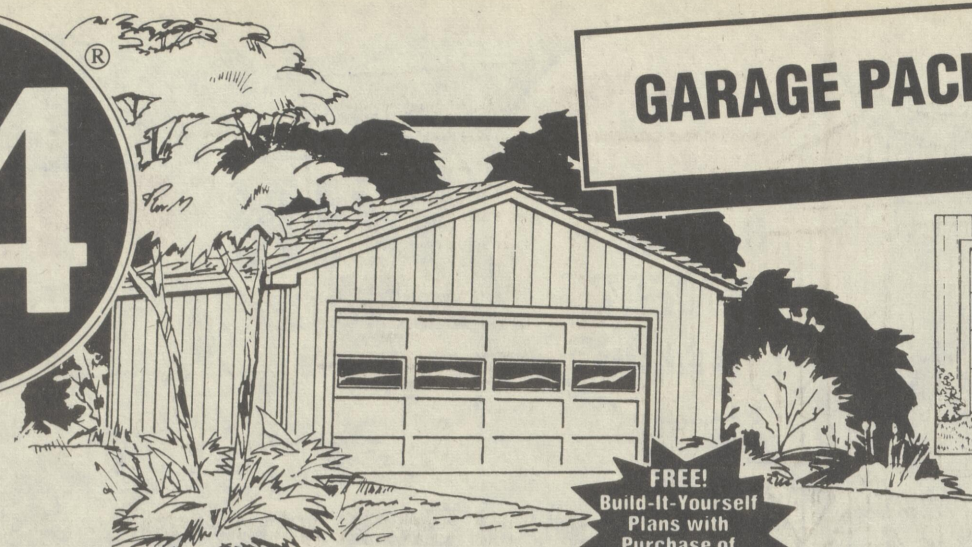
NEW! GEORGETOWN, DE
U.S. Route 113 North
(Across from State Police Barracks)
(302) 856-7684

See Back Page For Participating Store Nearest You.

STORE HOURS
Weekdays: 7 A.M. to 8 P.M.
Saturday: 8 A.M. to 5 P.M.
Sunday: 8 A.M. to 4 P.M.

84

GARAGE PACKAGES



ALSO AVAILABLE WITH 2 - 8'x7' GARAGE DOORS

FREE! Build-It-Yourself Plans with Purchase of Garage Package

GARAGE PACKAGES

Package Includes: • All Framing • Roofing

• Trim • Garage Door
• T1-11 Exterior Wood Siding

14'x22' 1 1/2 CAR GARAGE (832-30-99)

\$984 each

24'x24' 2 CAR GARAGE (832-40-99)

\$1,584 each

24'x24' 2 CAR GARAGE DELUXE (832-45-98)

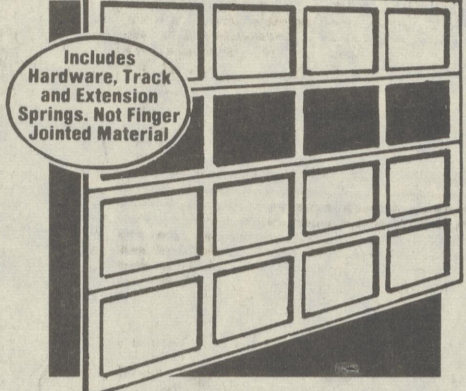
\$1,784 each

DELUXE GARAGE PACKAGE ALSO INCLUDES: 1 Window, Prehung 36" Steel Pedestrian Door, Coach Light Exterior Light Fixture. Door & Window Styles May Vary by Store Location.

4 Panel Glazed WOOD GARAGE DOOR

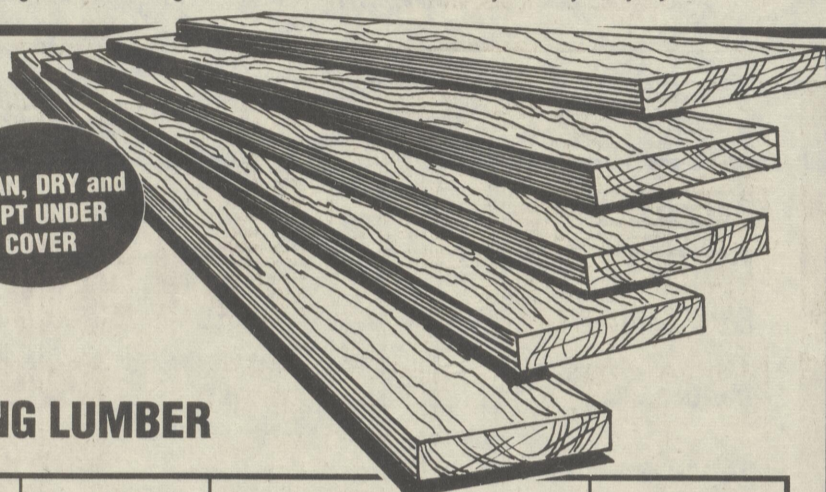
8'x7' (377-15) **13984** each

9'x7' (377-29) **14984** each



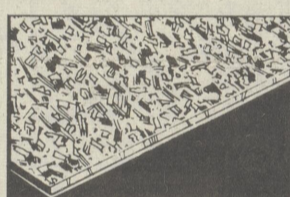
Includes Hardware, Track and Extension Springs. Not Finger Jointed Material

CLEAN, DRY and KEPT UNDER COVER



FRAMING LUMBER

Size	10'	12'	14'	16'
2"x4"	2.49	2.99	3.49	3.98
2"x6"	3.59	4.31	5.03	5.74
2"x8"	4.79	5.75	6.71	7.66
2"x10"	7.59	9.11	10.63	12.14



7/16"x4'x8' WAFERBOARD SHEATHING

599 each (716)



3/4"x4'x8' Tongue & Groove UNDERLAYMENT PLYWOOD

1599 each (534)



2"X3"X8' SPF STUDS

119 each (203-08-01)

Kraft Faced FIBERGLASS INSULATION

The higher the R-Value, the greater the insulating power. R-Value fact sheets on file.

3 1/2"x15" R-11 (430-08)

1234 roll
88.12 sq. ft. coverage

3 1/2"x23" R-11 (430-15)

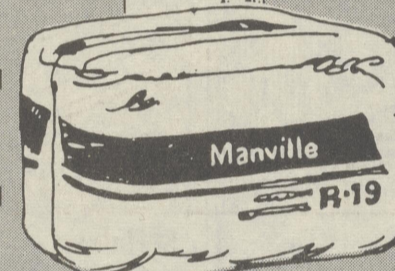
135.12 sq. ft. coverage **1892** roll

6 1/4"x15" R-19 (656-55)

48.96 sq. ft. coverage **1151** roll

6 1/4"x23" R-19 (430-22)

75.07 sq. ft. coverage **1764** roll



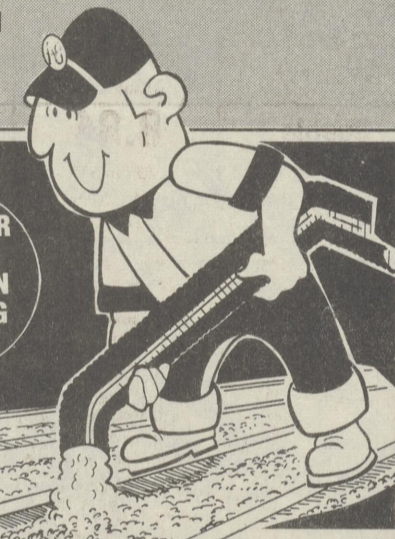
Blow-In CELLULOSE INSULATION

12¢ Sq. Ft. (625)

FREE use of blow-in machine with purchase of 20 bags. Coverage for R-19 is 29 square feet per bag at approximately 5" deep. Cost is \$3.49 for a 25 lb. bag.

The higher the R-Value, the greater the insulating power. R-Value fact sheets on file.

IDEAL FOR CLOSED WALLS IN EXISTING HOMES

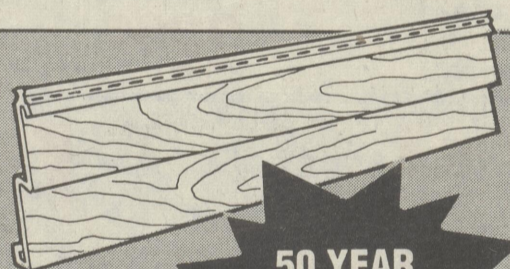


TWIN 5 VINYL SIDING

White (655-43) Almond (655-50)

3984 100 Sq. Ft.

Maintenance Free Finish Eliminates Painting.



50 YEAR LIMITED WARRANTY

20 Year Warranty

Fiberglass ROOFING SHINGLES

Self sealing. Class "A" fire rated. Choice of stock colors.

2149 100 Sq. Ft.



Bundle 7.16 Bundle Covers 33 1/3 sq. ft.

GUTTER

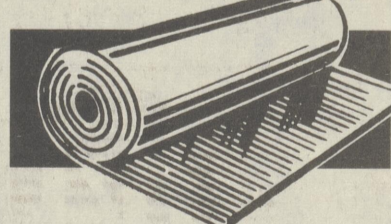
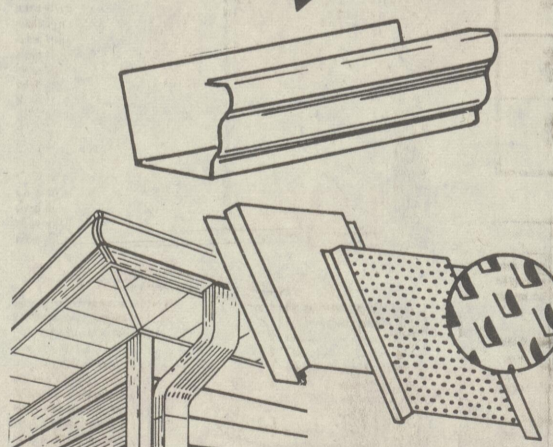
5"x10" Aluminum **384** each
White (490-01) Brown (490-08)

SOFFIT

12"x12" Aluminum **684** each
Solid White (306-48) Brown (306-55)
Perforated White (306-62) Brown (306-69)

FASCIA

6"x12" 6" Aluminum **684** each
White (306-76) Brown (685-30)
8"x12" 6" Aluminum **7.84** each
White (306-83) Brown (685-44)



SHINGLE UNDERLAYMENT

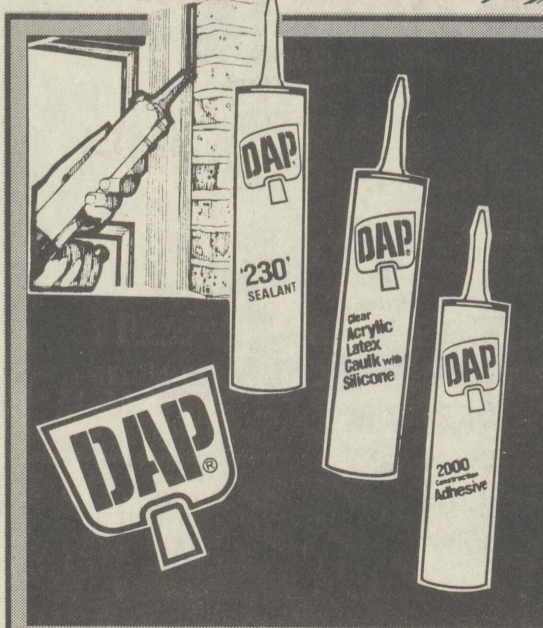
884 roll ((215)
Covers 400 Square Feet



Mineral Surface ROLL ROOFING

1184 roll
Covers 100 Square Feet

Colors Available!



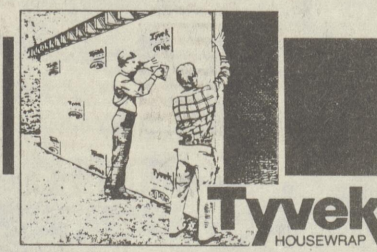
#230 SEALANT Your Choice

White (549-86) Brown (549-87) **284** each

Acrylic Latex CAULK with Silicone (547-78) **149** each

#4000 CONSTRUCTION ADHESIVE 11 OZ. (549-15) **169** each

29 OZ. (549-22) **349** each



9'x195' HOUSE WRAP (744-15)

13984 roll



(758) 5/8"x4'x8' T1-11 Exterior WOOD SIDING

1484 each

BUILD-IT YOURSELF & SAVE



THOUSANDS SOLD

COMPARE THE 84 BARN...
 • Barn Trusses 2' on center
 • Includes Roof Shingles & Floor
 • Includes all Hardware and Instructions

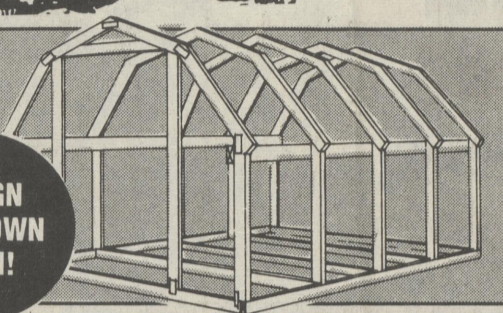
84®

WOOD TRUSS BARN PACKAGES
 with T-11 Exterior Wood Siding

- 8'x8'** (836-70-99) **\$319** each
 - 8'x12'** (836-80-99) **\$419** each
 - 10'x12'** (837-50-99) **\$519** each
- Store garden tools, lawn furniture, pool accessories and much more.

- BARN TRUSSES**
- 8'** (531-01) **1484** each
 - 10'** (657-67) **1784** each

DESIGN YOUR OWN BARN!



INCLUDES BRICK MOULD

PRE-HUNG INSULATED STEEL ENTRANCE DOORS
 Energy saving weather stripping. Primed and ready to paint.

32"x80" FLUSH
 RH (542-48) LH (542-55)

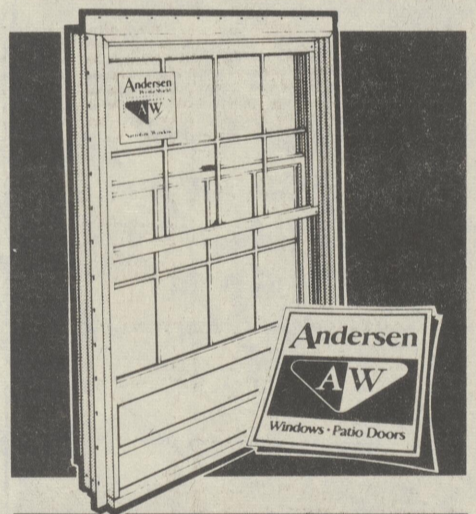
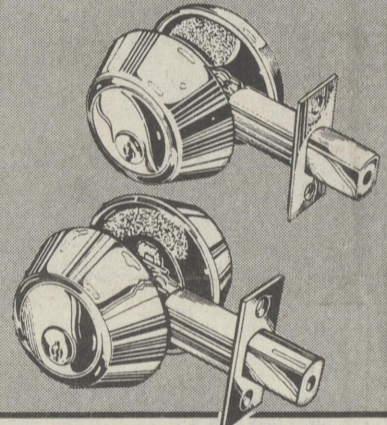


11984 each

36"x80" 6-Panel
 RH (542-76) LH (542-83) **12984** each

DOOR SECURITY

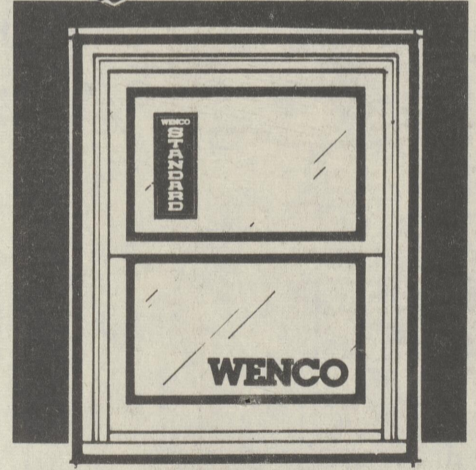
	Stainless Steel	Bright Brass
Single Deadbolt	6.49 (656-34)	6.84 (673-07)
Double Deadbolt	8.84 (656-41)	9.49 (673-14)



Andersen® White Narroline Series Double Hung WOOD WINDOWS

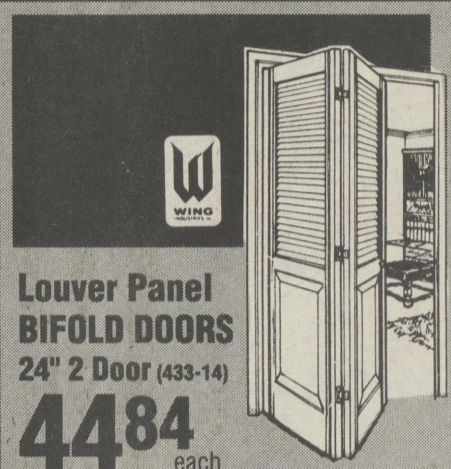
35% OFF

List Price. In Stock Sizes Only. Other sizes and styles available on a special order basis. Allow two weeks for delivery to store



DOUBLE HUNG WOOD WINDOWS
 with stop and sash lock

Glass Size	Rough Opening	Sale Price
20"x16"	26"x41 1/2" (573-01)	49.84
24"x16"	30"x41 1/2" (573-08)	52.84
24"x24"	30"x57 1/2" (573-22)	59.84



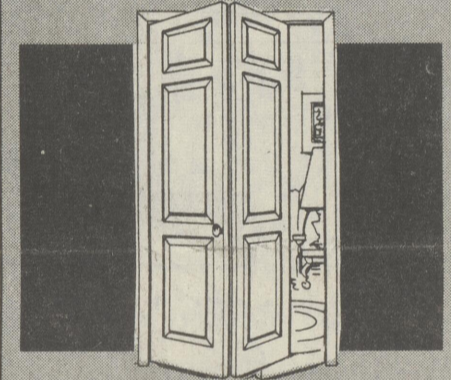
Louver Panel BIFOLD DOORS
 24" 2 Door (433-14)
4484 each

- 30" 2 Door (433-15) **4984** each
- 36" 2 Door (433-16) **5484** each



Lauan BIFOLD DOORS
 24" 2 Door (627-75)
2484 each

- 30" 2 Door (627-59) **3484** each
- 36" 2 Door (627-60) **3684** each
- 48" 4 Door (627-61) **4984** each



ELITE 6 PANEL BIFOLD DOORS
 24" 2 Door (557-06)
3984 each

- 30" 2 Door (557-07) **4484** each
- 36" 2 Door (557-08) **4684** each

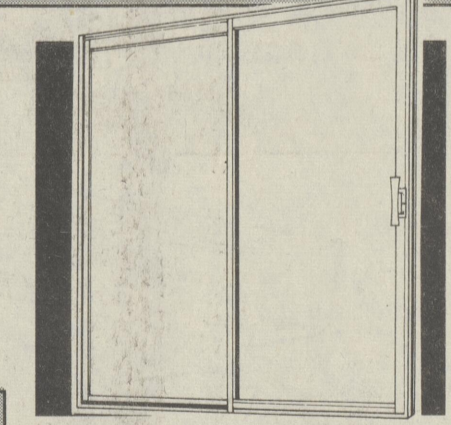


6 Panel Interior PREHUNG DOOR
 without casing
 24" RH (557-55) LH (557-62)
4484 each



1 3/8" Lauan INTERIOR DOORS
 12" (543-60)
1384 each

- 24" (543-74) **1584** each
 - 30" (543-81) **1784** each
- Bi-Pass Hardware Available



6' Insulated White Aluminum PATIO DOOR
18484 each

Screen Extra. (482-27), (483-19)
 6' Insulated Bronze Aluminum PATIO DOOR **18484** each
 Screen Extra. (482-20), (483-12)



Breakwater

84

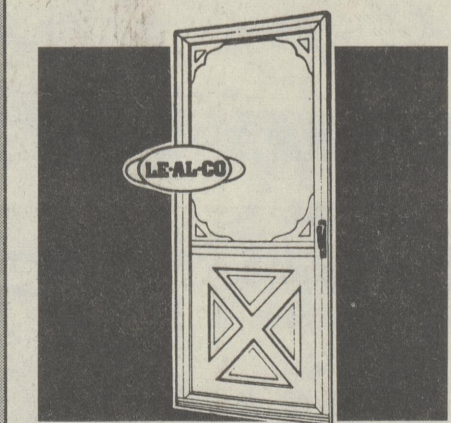
DREAM HOMES

OUR MOST POPULAR MODEL

BREAKWATER
 1,259 Square Feet
\$21,884
 *COMPLETE

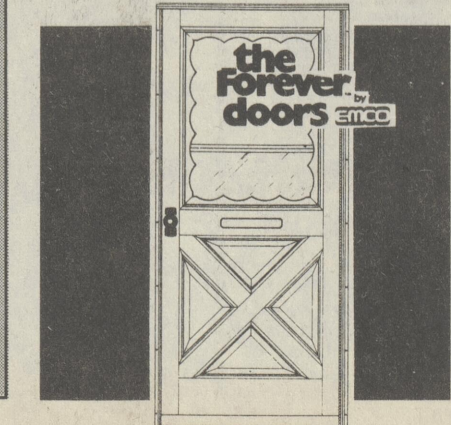
*You supply the land, labor and foundation. We'll provide the rest including: electric, heating, plumbing, kitchen cabinets, carpet, paint, appliances and even the light bulbs!

Estimate price only, actual price will vary by options selected.
 See 84 Lumber Associate for details.



1 1/4" White Crossback STORM & SCREEN DOORS
 32"x80"
6284 each
 RH (482-69) LH (482-62)

- 36"x80" **6484** each
 RH (482-83) LH (482-76)



Emco® Forever White Colonial Crossback STORM & SCREEN DOORS
 32"x80"
16984 each
 RH (540-37) LH (540-36)

- 36"x80" **17484** each
 RH (540-35) LH (540-34)

84 For Illustrated Catalog Mail \$3.00 Check or Money Order to:

84 HOMES
 Dept H, P.O. Box 8484, Eighty Four, PA 15384
 (Please Print Clearly)

Lot Owned? _____ Phone No. _____
 84 Lumber Nearest You? _____
 Name _____
 Address _____
 City/State _____ Zip _____

84

KITCHENS

FREE KITCHEN DESIGN SERVICE



KITCHEN CABINETS
UP TO **60% OFF**
List Price.
Discount Varies by Cabinet Style.

American Woodmark
Cabinetry Worth Looking Into



Stainless Steel DOUBLE BOWL KITCHEN SINK
(628-16) **2884** each

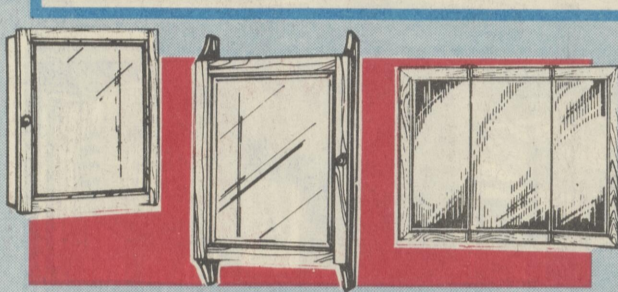
MOEN Touch Control RISER KITCHEN FAUCET
(629-17) **8984** each

SAMPLE SAVINGS
9'x10' "L" shape Potomac Kitchen

Walls	Bases	Manufacturer's List Price
W2430	B24	\$2,600
W1530	UF3	
VAL36	SB36	
W3018	B30	
BLW45/4830	BLB45/48	
W3030		
W3315		

YOUR PRICE
\$1040

CERTIFIED NKCA CABINET
NATIONAL KITCHEN CABINET ASSOCIATION
ANS/NKCA A161.1



Single Door Recessed BATH CABINET
(615-55) **3984** each

Single Door Surface Mount BATH CABINET
(615-53) **7984** each

30" Tri View BATH CABINET
(615-52) **8984** each



19"x17" 1 Door VANITY (326-18) with Cultured Marble Top **9984** each

25"x19" 2 Door VANITY (326-19) with Cultured Marble Top **13984** each

31"x19" 1 Door/2 Drawer VANITY (326-21) with Cultured Marble Top **17984** each



Acadia White Water Saver TOILET
(669-57) **4984** each
Seat Extra



VANITY FAUCETS
#84401 Two Handle without Pop-up (628-43) **2284** each
#84421 Two Handle with Pop-up (629-34) **3284** each



Artesian® A-9000 Alcove White TUB WALL KIT
(617-98) **11984** each

Grand Opening Schedule of Events - Georgetown, Delaware Store Only!

BRING THE WHOLE FAMILY TO SEE "The Human Bomb" ATTEMPT HIS DEATH DEFYING ACT
Georgetown, Delaware Store Only




Benny "Boom Boom" Koske "The Human Bomb"

BENNY "BOOM BOOM" KOSKE will be signing autographs at the completion of each performance.

Watch "The Human Bomb" blow himself up in a 2'x6" wooden box charged with enough explosives to open a one ton safe!! One of the greatest death defying stunts ever performed!

Thursday, March 10
6:00 p.m.
Friday, March 11
6:00 p.m.
Saturday, March 12
1:30 p.m.

FREE PAUL BUNYAN GAMES OVER \$600 IN CASH PRIZES! HOW TO ENTER



- Official Paul Bunyan entry blanks are available at Georgetown, Delaware Store Only.
- Registration Desk will be open Thursday, March 10 and Friday, March 11 7 a.m. - 8 p.m.
- Official Paul Bunyan entry blanks must be completed and filed with Registrar at 84 Lumber before beginning of each contest.

EVENTS	Qualifying Round	Finals
	Thursday and Friday	Saturday
1. Nail Driving-Time	10:30 A.M. & 5:30 P.M.	10:00 A.M.
2. Cross Cut Saw (one man)-Time	11:30 A.M. & 5:45 P.M.	10:30 A.M.
3. Hand Drill-Time	1:30 P.M. & 6:00 P.M.	11:30 A.M.
4. Fish Casting Accuracy	2:00 P.M. ONLY	12:00 NOON
5. Horse Shoe Pitching-Accuracy	3:00 P.M. & 6:15 P.M.	12:30 P.M.
6. Log Rolling-Time	4:00 P.M. & 6:30 P.M.	1:00 P.M.

Mr. Paul Bunyan title will be awarded to the individual qualifying in at least three events and scoring the highest number of points in the finals using the best three events.

FREE DO-IT-YOURSELF CLINICS

By Factory Representatives
Let The Experts Answer Your Questions

Thursday, March 10 9:30 A.M.-Floor Covering 10:00 A.M.-Siding 11:00 A.M.-Paint 12:30 P.M.-Paneling 1:30 P.M.-Roofing 3:30 P.M.-Insulation 4:30 P.M.-Patio Doors 5:00 P.M.-Siding 5:30 P.M.-Kitchens	Friday, March 11 9:30 A.M.-Paneling 10:00 A.M.-Bath Fixtures 11:00 A.M.-Ceiling Tile 12:30 P.M.-Insulation 1:30 P.M.-Storm Windows 2:30 P.M.-Paint 3:30 P.M.-Floor Covering 4:30 P.M.-Storm Doors 5:00 P.M.-Drywall 5:30 P.M.-Kitchens
---	---

Saturday, March 12
9:30 A.M.-Roofing
11:00 A.M.-Drywall
Georgetown, Delaware Store Only!



DELIVERY AVAILABLE AT REASONABLE RATES

NOT RESPONSIBLE FOR TYPOGRAPHICAL ERRORS. 84 RESERVES THE RIGHT TO CORRECT INACCURATE PRICES AT POINT OF PURCHASE. WE RESERVE THE RIGHT TO LIMIT QUANTITIES.

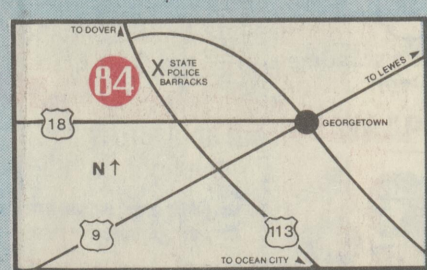
84 LUMBER & HOME CENTER

NEW!

GEORGETOWN, DE
U.S. Route 113 North
(Across from State Police Barracks)
(302) 856-7684



WE ACCEPT CHECKS



Georgetown, Delaware Store Only
Coffee and Soft Drinks 10c ea
Hot Dogs 25c ea
Starting Thursday, March 10 Through Sunday, March 13

Grand Opening Prices Also Good At:

CAMBRIDGE, MD
Route 50 & Woods Road
(301) 228-8484

DOVER, DE
529 South DuPont Highway
Just South of Routes 13 & 113 Intersection
(302) 678-8084

WEEKDAYS: 7:00 - 8:00 P.M. SATURDAY: 8:00 A.M. - 5:00 P.M. SUNDAY: 8:00 A.M. - 4:00 P.M.